



## Acoustic Emission Technique to monitor real-time wood fracture properties in room temperature

Malick Diakhaté, Rostand Moutou Pitti, Nicolas Angellier, Emilio Bastidas-Arteaga, Seif Eddine Hamdi

### ► To cite this version:

Malick Diakhaté, Rostand Moutou Pitti, Nicolas Angellier, Emilio Bastidas-Arteaga, Seif Eddine Hamdi. Acoustic Emission Technique to monitor real-time wood fracture properties in room temperature. COST Action FP1407 3rd Conference: “Wood modification research and applications”, Sep 2017, Kuchl, Austria. hal-01616955

**HAL Id: hal-01616955**

**<https://hal.science/hal-01616955v1>**

Submitted on 15 Oct 2017

**HAL** is a multi-disciplinary open access archive for the deposit and dissemination of scientific research documents, whether they are published or not. The documents may come from teaching and research institutions in France or abroad, or from public or private research centers.

L'archive ouverte pluridisciplinaire **HAL**, est destinée au dépôt et à la diffusion de documents scientifiques de niveau recherche, publiés ou non, émanant des établissements d'enseignement et de recherche français ou étrangers, des laboratoires publics ou privés.

## Acoustic Emission Technique to monitor real-time wood fracture properties in room temperature

Malick Diakhate<sup>1</sup>, Rostand Moutou Pitti<sup>2</sup>, Nicolas Angellier<sup>3</sup>, Emilio Bastidas-Arteaga<sup>4</sup>, Seif Eddine Hamdi<sup>2</sup>

<sup>1</sup> Univ. Bretagne Occidentale, FRE CNRS 3744, IRDL, F-29600 Morlaix, France,  
[malick.diakhate@univ-brest.fr](mailto:malick.diakhate@univ-brest.fr)

<sup>2</sup> Université Clermont Auvergne, CNRS, Institut Pascal, F-63000 Clermont-Ferrand, France,  
[rostand.moutou\\_pitti@uca.fr](mailto:rostand.moutou_pitti@uca.fr) / [seif3eddine@yahoo.com](mailto:seif3eddine@yahoo.com)

<sup>3</sup> Université de Limoges, GEMH, EA 3178, F-19300 Egletons, France,  
[nicolas.angellier@unilim.fr](mailto:nicolas.angellier@unilim.fr)

<sup>4</sup> UBL, Université de Nantes, GeM, CNRS UMR 6183/FR 3473, F-44332 Nantes Cedex 3, France, [emilio.bastidas@univ-nantes.fr](mailto:emilio.bastidas@univ-nantes.fr)

**Keywords:** wood; fracture properties; acoustic emission; data clustering; crack tip growth

Nowadays, environment effects, and in particular the reduction of greenhouse effect, are one of the most important issues that are of great concern to the research community. As per the Kyoto protocol and the COP 21 meeting, the use of wood in civil engineering structures reminds one solution for the regulation of these effects by minimizing both CO<sub>2</sub> emission and the use of grey energy. Since the wood mechanical behaviour is quite complex due to its anisotropic constitution, the coalescence of various defects (nodes, orientation of annual rings, ...) during its service life, the increasing use of wood as structural material in civil engineering is a major challenge, and needs to increase scientific efforts in understanding the mechanical behaviour of timber structures.

In order to bring some responses to these scientific problems, the JCJC 2013 CLIMBOIS research project (Moutou Pitti *et al.* 2014) is dealing with the effects of climatic and mechanical variations on the durability of notched timber structures. Material cracking is one of the most important factors involved in the collapse of structures. However, if the crack initiation is detected earlier, and the monitoring of the crack propagation within the materials is under control, the structural integrity of buildings can be easily evaluated by sending alerts. Within the framework of this research project, the study carried out herein is devoted to both an identification of failure

mechanisms in wood material, and an evaluation of the crack length evolution during fracture tests. The proposed methodology includes fracture tests under constant environmental conditions as well as statistical and probabilistic analysis of the acoustic emission (AE) results (Diakhate *et al.* 2017). Fig.1 shows some results of mode I fracture tests.

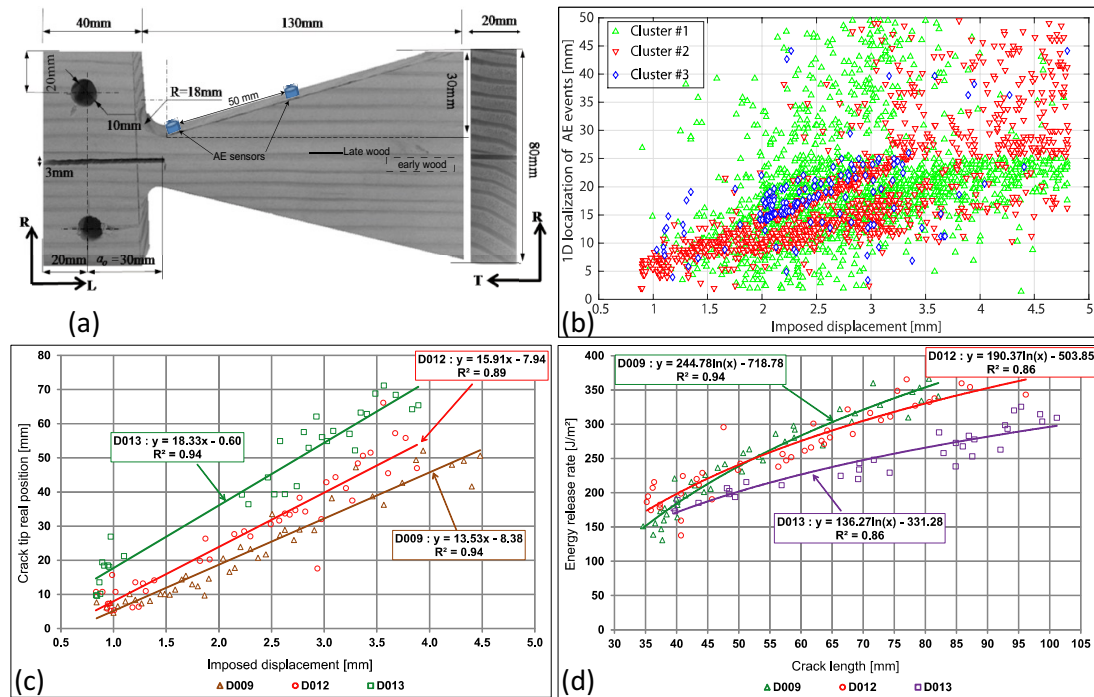


Figure 1: Mode I fracture test on wood material: (a) Modified DCB specimen – (b) Cluster analysis of acoustic emission activity within wood material – (c) Monitoring the crack tip propagation – (d) Energy release rate versus crack length

The results show the ability of the proposed technique to identify the crack tip advance. In the coming work, the proposed methodology will be generalised to different moisture content rates and mixed mode configurations in order to investigate the behaviour of timber structure submitted to outdoor conditions coupled with complex loadings.

## References

- Moutou Pitti R., Diakhate M., Bastidas-Arteaga E., Aoues Y., Angellier N., Riahi H., Chateauneuf A., Dubois F. 2014. ANR JCJC-2013 Project CLIMBOIS: effects of climatic and mechanical variations on the durability of timber structures: use of acoustic emission tool to evaluate wood mechanical behaviour. COST Action FP1302 Wood Music, Opening Conference. Paris, France, 26-28 February.
- Diakhate M, Bastidas-Arteaga E, Moutou Pitti R, and Schoefs F. 2017. Cluster analysis of acoustic emission activity within wood material: Towards a real-time monitoring of crack tip propagation. *Engineering Fracture Mechanics* 180: 254–267.

## Acknowledgments:

The authors wish to gratefully acknowledge the French National Research Agency for funding this work through the research project CLIMBOIS N° ANR-13-JS09-0003-01 labelled by ViaMeca. Also thanks to the COST Action FP1407 for their financial support to attend this conference.