



The physical impossibility of machine computations on sufficiently large integers inspires an open problem that concerns abstract computable sets $X \subseteq \mathbb{N}$ and cannot be formalized in ZFC as it refers to our current knowledge on X

Slawomir Kurpaska, Apoloniusz Tyszk

► **To cite this version:**

Slawomir Kurpaska, Apoloniusz Tyszk. The physical impossibility of machine computations on sufficiently large integers inspires an open problem that concerns abstract computable sets $X \subseteq \mathbb{N}$ and cannot be formalized in ZFC as it refers to our current knowledge on X . 2020. hal-01614087v11

HAL Id: hal-01614087

<https://hal.science/hal-01614087v11>

Preprint submitted on 25 Aug 2020 (v11), last revised 20 Sep 2023 (v34)

HAL is a multi-disciplinary open access archive for the deposit and dissemination of scientific research documents, whether they are published or not. The documents may come from teaching and research institutions in France or abroad, or from public or private research centers.

L'archive ouverte pluridisciplinaire **HAL**, est destinée au dépôt et à la diffusion de documents scientifiques de niveau recherche, publiés ou non, émanant des établissements d'enseignement et de recherche français ou étrangers, des laboratoires publics ou privés.

The physical impossibility of machine computations on sufficiently large integers inspires an open problem that concerns abstract computable sets $X \subseteq \mathbb{N}$ and cannot be formalized in *ZFC* as it refers to our current knowledge on X

Sławomir Kurpaska, Apoloniusz Tyszką

Abstract. Edmund Landau's conjecture states that the set \mathcal{P}_{n^2+1} of primes of the form $n^2 + 1$ is infinite. Let $\beta = (((24!)!)!)!$, and let Φ denote the implication: $\text{card}(\mathcal{P}_{n^2+1}) < \omega \Rightarrow \mathcal{P}_{n^2+1} \subseteq (-\infty, \beta]$. We heuristically justify the statement Φ without invoking Landau's conjecture. Open problem: Is there a set $X \subseteq \mathbb{N}$ that satisfies conditions (1)–(5)? (1) *There are a large number of elements of X and it is conjectured that X is infinite.* (2) *No known algorithm decides the finiteness/infiniteness of X .* (3) *There is a known algorithm that for every $k \in \mathbb{N}$ decides whether or not $k \in X$.* (4) *There is an explicitly known integer n such that $\text{card}(X) < \omega \Rightarrow X \subseteq (-\infty, n]$.* (5) *X is simply defined and we know an algorithm such that for every input $k \in \mathbb{N}$ it returns the sentence " $k \in X$ " or the sentence " $k \notin X$ " and every returned sentence is true when k is sufficiently large. The simplest known such algorithm may return a false sentence only if k is small.* We prove: (i) the set $X = \{k \in \mathbb{N} : (\beta < k) \Rightarrow (\beta, k) \cap \mathcal{P}_{n^2+1} \neq \emptyset\}$ satisfies conditions (1)–(4), (ii) the set $X = \mathcal{P}_{n^2+1}$ satisfies conditions (1)–(3) and (5), (iii) the statement Φ implies that the set $X = \mathcal{P}_{n^2+1}$ satisfies condition (4).

Keywords: computable set $X \subseteq \mathbb{N}$, current knowledge on X , explicitly known integer n , machine computations on large integers, mathematical statement about X that refers to the current knowledge on X , physical limits of computation.

1. Basic definitions and the goal of the article

Logicism is a programme in the philosophy of mathematics. It is mainly characterized by the contention that mathematics can be reduced to logic, provided that the latter includes set theory, see [3, p. 199].

Definition 1. Conditions (1)–(5) concern sets $X \subseteq \mathbb{N}$.

- (1) There are a large number of elements of X and it is conjectured that X is infinite.
- (2) No known algorithm decides the finiteness/infiniteness of X .
- (3) There is a known algorithm that for every $k \in \mathbb{N}$ decides whether or not $k \in X$.
- (4) There is an explicitly known integer n such that $\text{card}(X) < \omega \Rightarrow X \subseteq (-\infty, n]$.
- (5) X is simply defined and we know an algorithm such that for every input $k \in \mathbb{N}$ it returns the sentence " $k \in X$ " or the sentence " $k \notin X$ " and every returned sentence is true when k is sufficiently large. The simplest known such algorithm may return a false sentence only if k is small.

Definition 2. We say that an integer n is a threshold number of a set $X \subseteq \mathbb{N}$, if $\text{card}(X) < \omega \Rightarrow X \subseteq (-\infty, n]$, cf. [7] and [8].

If a set $X \subseteq \mathbb{N}$ is empty or infinite, then any integer n is a threshold number of X . If a set $X \subseteq \mathbb{N}$ is non-empty and finite, then the all threshold numbers of X form the set $[\max(X), \infty) \cap \mathbb{N}$.

Edmund Landau's conjecture states that the set \mathcal{P}_{n^2+1} of primes of the form $n^2 + 1$ is infinite, see [4]–[6].

Definition 3. Let Φ denote the implication:

$$\text{card}(\mathcal{P}_{n^2+1}) < \omega \Rightarrow \mathcal{P}_{n^2+1} \subseteq (-\infty, (((24!)!)!)!]$$

Landau's conjecture implies the statement Φ . In Section 4, we heuristically justify the statement Φ without invoking Landau's conjecture.

Statement 1. There is no explicitly known threshold number of \mathcal{P}_{n^2+1} . It means that there is no explicitly known integer k such that $\text{card}(\mathcal{P}_{n^2+1}) < \omega \Rightarrow \mathcal{P}_{n^2+1} \subseteq (-\infty, k]$.

Proving the statement Φ will falsify Statement 1. Statement 1 cannot be formalized in *ZFC* because it refers to the current mathematical knowledge. The same is true for Statements 2–3 and Open Problem 1 in the next sections. It argues against logicism as Open Problem 1 concerns abstract computable sets $X \subseteq \mathbb{N}$.

2. The physical impossibility of machine computations on sufficiently large integers inspires Open Problem 1

Definition 4. Let $\beta = (((24!)!)!)!$.

Lemma 1. $\log_2(\log_2(\log_2(\log_2(\log_2(\log_2(\log_2(\beta))))))) \approx 1.42298$.

Proof. We ask Wolfram Alpha at <http://wolframalpha.com>. □

Statement 2. The set $X = \{k \in \mathbb{N} : (\beta < k) \Rightarrow (\beta, k) \cap \mathcal{P}_{n^2+1} \neq \emptyset\}$ satisfies conditions (1)–(4).

Proof. Condition (1) holds as $X \supseteq \{0, \dots, \beta\}$ and the set \mathcal{P}_{n^2+1} is conjecturally infinite. By Lemma 1, due to known physics we are not able to confirm by a direct computation that some element of \mathcal{P}_{n^2+1} is greater than β , see [2]. Thus condition (2) holds. Condition (3) holds trivially. Since the set

$$\{k \in \mathbb{N} : (\beta < k) \wedge (\beta, k) \cap \mathcal{P}_{n^2+1} \neq \emptyset\}$$

is empty or infinite, the integer β is a threshold number of X . Thus condition (4) holds. \square

Open Problem 1. Is there a set $X \subseteq \mathbb{N}$ that satisfies conditions (1)–(5)?

Theorem 1. Assume that for every positive integers b and s , at some future day, machine computations will be possible on every integers from the interval $[-b, b]$ and this will be possible with the speed of s FLOPS. These assumptions contradict the current paradigm of physics, although they alone have no consequences in mathematics formalized in ZFC. We claim that our assumptions alone imply that no set $X \subseteq \mathbb{N}$ will satisfy conditions (1)–(4) forever.

Proof. The proof goes by contradiction. Since conditions (2)–(4) will hold forever, the algorithm in Figure 1 never terminates and sequentially prints the following sentences:

$$n+1 \notin X, n+2 \notin X, n+3 \notin X, \dots \quad (\text{T})$$

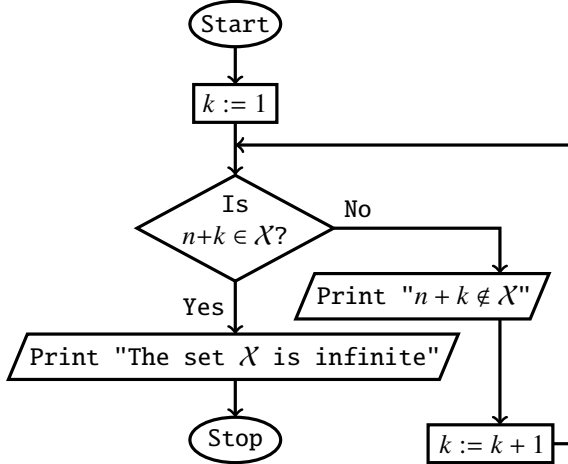


Fig. 1 An algorithm whose execution never terminates if the set X is finite

The sentences from the sequence (T) and our assumptions alone imply that for every explicitly given integer $m > n$, at some future day, a computer will be able to confirm in 1 second or less that $(n, m] \cap X = \emptyset$. Thus, at some future day, numerical evidence will support the conjecture that the set X is finite, contrary to the conjecture in condition (1). \square

3. Number-theoretic statements Ψ_n

Let $f(1) = 2$, $f(2) = 4$, and let $f(n+1) = f(n)!$ for every integer $n \geq 2$. Let \mathcal{U}_1 denote the system of equations which consists of the equation $x_1! = x_1$. For an integer $n \geq 2$, let \mathcal{U}_n denote the following system of equations:

$$\begin{cases} x_1! = x_1 \\ x_1 \cdot x_1 = x_2 \\ \forall i \in \{2, \dots, n-1\} x_i! = x_{i+1} \end{cases}$$

The diagram in Figure 2 illustrates the construction of the system \mathcal{U}_n .

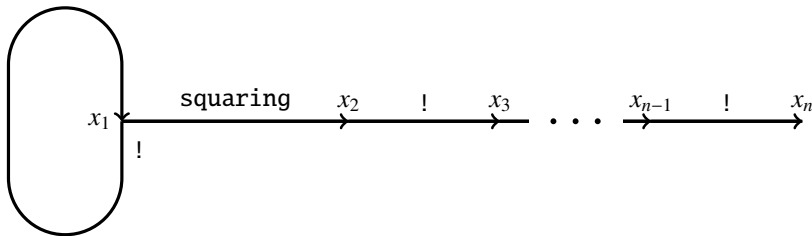


Fig. 2 Construction of the system \mathcal{U}_n

Lemma 2. *For every positive integer n , the system \mathcal{U}_n has exactly two solutions in positive integers, namely $(1, \dots, 1)$ and $(f(1), \dots, f(n))$.*

Let

$$B_n = \{x_i! = x_k : i, k \in \{1, \dots, n\}\} \cup \{x_i \cdot x_j = x_k : i, j, k \in \{1, \dots, n\}\}$$

For a positive integer n , let Ψ_n denote the following statement: *if a system of equations $\mathcal{S} \subseteq B_n$ has at most finitely many solutions in positive integers x_1, \dots, x_n , then each such solution (x_1, \dots, x_n) satisfies $x_1, \dots, x_n \leq f(n)$.* The statement Ψ_n says that for subsystems of B_n with a finite number of solutions, the largest known solution is indeed the largest possible. The statements Ψ_1 and Ψ_2 hold trivially. There is no reason to assume the validity of the statement Ψ_9 , cf. Conjecture 1 in Section 4.

Theorem 2. *For every statement Ψ_n , the bound $f(n)$ cannot be decreased.*

Proof. It follows from Lemma 2 because $\mathcal{U}_n \subseteq B_n$. □

Theorem 3. *For every integer $n \geq 2$, the statement Ψ_{n+1} implies the statement Ψ_n .*

Proof. If a system $\mathcal{S} \subseteq B_n$ has at most finitely many solutions in positive integers x_1, \dots, x_n , then for every integer $i \in \{1, \dots, n\}$ the system $\mathcal{S} \cup \{x_i! = x_{n+1}\}$ has at most finitely many solutions in positive integers x_1, \dots, x_{n+1} . The statement Ψ_{n+1} implies that $x_i! = x_{n+1} \leq f(n+1) = f(n)!$. Hence, $x_i \leq f(n)$. □

Theorem 4. *Every statement Ψ_n is true with an unknown integer bound that depends on n .*

Proof. For every positive integer n , the system B_n has a finite number of subsystems. □

4. A conjectural solution to Open Problem 1

Lemma 3. *For every positive integers x and y , $x! \cdot y = y!$ if and only if*

$$(x + 1 = y) \vee (x = y = 1)$$

Lemma 4. *(Wilson's theorem, [1, p. 89]). For every integer $x \geq 2$, x is prime if and only if x divides $(x - 1)! + 1$.*

Let \mathcal{A} denote the following system of equations:

$$\left\{ \begin{array}{lcl} x_2! & = & x_3 \\ x_3! & = & x_4 \\ x_5! & = & x_6 \\ x_8! & = & x_9 \\ x_1 \cdot x_1 & = & x_2 \\ x_3 \cdot x_5 & = & x_6 \\ x_4 \cdot x_8 & = & x_9 \\ x_5 \cdot x_7 & = & x_8 \end{array} \right.$$

Lemma 3 and the diagram in Figure 3 explain the construction of the system \mathcal{A} .

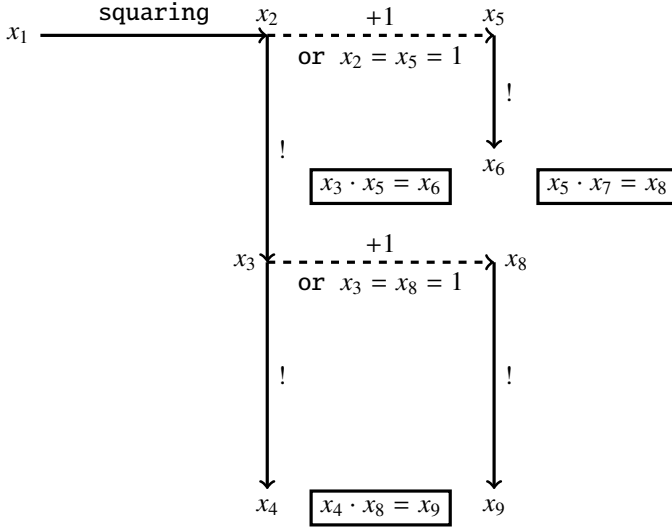


Fig. 3 Construction of the system \mathcal{A}

Lemma 5. *For every integer $x_1 \geq 2$, the system \mathcal{A} is solvable in positive integers x_2, \dots, x_9 if and only if $x_1^2 + 1$ is prime. In this case, the integers x_2, \dots, x_9 are uniquely determined by the following equalities:*

$$\begin{aligned} x_2 &= x_1^2 \\ x_3 &= (x_1^2)! \\ x_4 &= ((x_1^2)!)! \\ x_5 &= x_1^2 + 1 \\ x_6 &= (x_1^2 + 1)! \\ x_7 &= \frac{(x_1^2)! + 1}{x_1^2 + 1} \\ x_8 &= (x_1^2)! + 1 \\ x_9 &= ((x_1^2)! + 1)! \end{aligned}$$

Proof. By Lemma 3, for every integer $x_1 \geq 2$, the system \mathcal{A} is solvable in positive integers x_2, \dots, x_9 if and only if $x_1^2 + 1$ divides $(x_1^2)! + 1$. Hence, the claim of Lemma 5 follows from Lemma 4. \square

Lemma 6. *There are only finitely many tuples $(x_1, \dots, x_9) \in (\mathbb{N} \setminus \{0\})^9$, which solve the system \mathcal{A} and satisfy $x_1 = 1$. This is true as every such tuple (x_1, \dots, x_9) satisfies $x_1, \dots, x_9 \in \{1, 2\}$.*

Proof. The equality $x_1 = 1$ implies that $x_2 = x_1^2 = 1$. Hence, for example, $x_3 = x_2! = 1$. Therefore, $x_8 = x_3 + 1 = 2$ or $x_8 = 1$. Consequently, $x_9 = x_8! \leq 2$. \square

Conjecture 1. *The statement Ψ_9 is true when is restricted to the system \mathcal{A} .*

Theorem 5. *Conjecture 1 proves the following implication: if there exists an integer $x_1 \geq 2$ such that $x_1^2 + 1$ is prime and greater than $f(7)$, then the set \mathcal{P}_{n^2+1} is infinite.*

Proof. Suppose that the antecedent holds. By Lemma 5, there exists a unique tuple $(x_2, \dots, x_9) \in (\mathbb{N} \setminus \{0\})^8$ such that the tuple (x_1, x_2, \dots, x_9) solves the system \mathcal{A} . Since $x_1^2 + 1 > f(7)$, we obtain that $x_1^2 \geq f(7)$. Hence, $(x_1^2)! \geq f(7)! = f(8)$. Consequently,

$$x_9 = ((x_1^2)! + 1)! \geq (f(8) + 1)! > f(8)! = f(9)$$

Conjecture 1 and the inequality $x_9 > f(9)$ imply that the system \mathcal{A} has infinitely many solutions $(x_1, \dots, x_9) \in (\mathbb{N} \setminus \{0\})^9$. According to Lemmas 5 and 6, the set \mathcal{P}_{n^2+1} is infinite. \square

Theorem 6. *Conjecture 1 implies the statement Φ .*

Proof. It follows from Theorem 5 and the equality $f(7) = (((24!)!)!)!$. \square

Theorem 7. *The statement Φ implies Conjecture 1.*

Proof. By Lemmas 5 and 6, if positive integers x_1, \dots, x_9 solve the system \mathcal{A} , then

$$(x_1 \geq 2) \wedge (x_5 = x_1^2 + 1) \wedge (x_5 \text{ is prime})$$

or $x_1, \dots, x_9 \in \{1, 2\}$. In the first case, Lemma 5 and the statement Φ imply that the inequality $x_5 \leq (((24!)!)!)! = f(7)$ holds when the system \mathcal{A} has at most finitely many solutions in positive integers x_1, \dots, x_9 . Hence, $x_2 = x_5 - 1 < f(7)$ and $x_3 = x_2! < f(7)! = f(8)$. Continuing this reasoning in the same manner, we can show that every x_i does not exceed $f(9)$. \square

Statement 3. The set $\mathcal{X} = \mathcal{P}_{n^2+1}$ satisfies conditions (1)–(3) and (5). The statement Φ implies that the set $\mathcal{X} = \mathcal{P}_{n^2+1}$ satisfies condition (4).

Proof. The set \mathcal{P}_{n^2+1} is conjecturally infinite. There are 2199894223892 primes of the form $n^2 + 1$ in the interval $[2, 10^{28})$, see [5]. These two facts imply condition (1). Condition (3) holds trivially. By Lemma 1, due to known physics we are not able to confirm by a direct computation that some element of \mathcal{P}_{n^2+1} is greater than $f(7) = (((24!)!)!) = \beta$, see [2]. Thus condition (2) holds. Condition (5) holds as the algorithm in Figure 4 returns a true sentence for every input $k \in \mathbb{N} \setminus \{1, 2\}$.

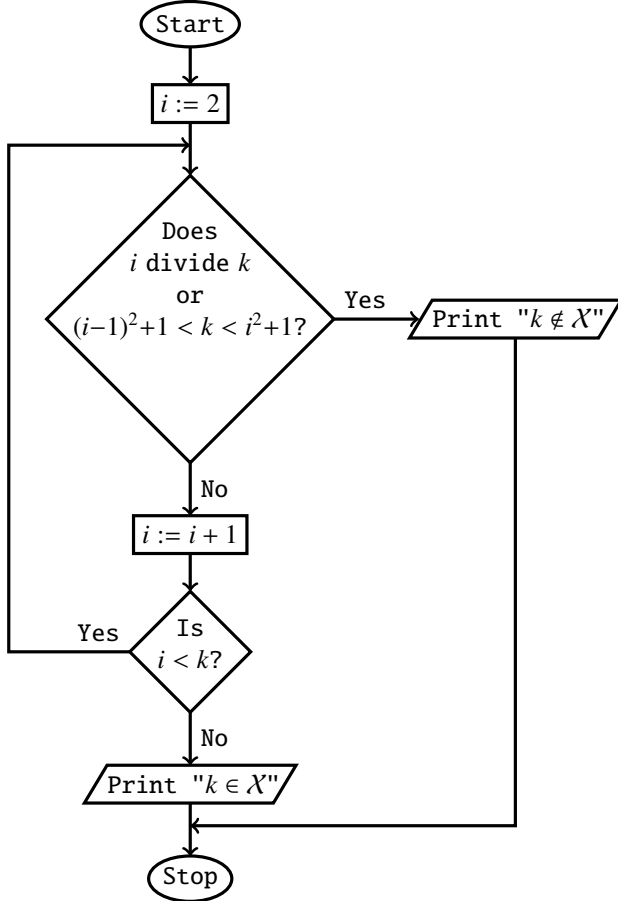


Fig. 4 An algorithm that satisfies condition (5) for $\mathcal{X} = \mathcal{P}_{n^2+1}$

Suppose that the statement Φ is true. This means that β is a threshold number of $\mathcal{X} = \mathcal{P}_{n^2+1}$. Thus condition (4) holds. \square

Acknowledgment. Sławomir Kurpaska prepared four diagrams in *TikZ*. Apoloniusz Tyszka wrote the article.

References

- [1] M. Erickson, A. Vazzana, D. Garth, *Introduction to number theory*, 2nd ed., CRC Press, Boca Raton, FL, 2016.
- [2] S. Lloyd, *Ultimate physical limits to computation*, *Nature* 406 (2000), 1047–1054, <http://doi.org/10.1038/35023282>.
- [3] W. Marciszewski, *Logic, modern, history of*, in: *Dictionary of logic as applied in the study of language* (ed. W. Marciszewski), pp. 183–200, Springer, Dordrecht, 1981.
- [4] N. J. A. Sloane, *The On-Line Encyclopedia of Integer Sequences*, A002496, *Primes of the form $n^2 + 1$* , <http://oeis.org/A002496>.
- [5] N. J. A. Sloane, *The On-Line Encyclopedia of Integer Sequences*, A083844, *Number of primes of the form $x^2 + 1 < 10^n$* , <http://oeis.org/A083844>.
- [6] Wolfram MathWorld, *Landau's Problems*, <http://mathworld.wolfram.com/LandausProblems.html>.
- [7] A. A. Zenkin, *Super-induction method: logical acupuncture of mathematical infinity*, Twentieth World Congress of Philosophy, Boston, MA, August 10–15, 1998, <http://www.bu.edu/wcp/Papers/Logi/LogiZenk.htm>.
- [8] A. A. Zenkin, *Superinduction: new logical method for mathematical proofs with a computer*, in: J. Cachro and K. Kijania-Placek (eds.), *Volume of Abstracts*, 11th International Congress of Logic, Methodology and Philosophy of Science, August 20–26, 1999, Cracow, Poland, p. 94, The Faculty of Philosophy, Jagiellonian University, Cracow, 1999.

Sławomir Kurpaska
 Technical Faculty
 Hugo Kołłątaj University
 Balicka 116B, 30-149 Kraków, Poland
 E-mail: rtkurpas@cyf-kr.edu.pl

Apoloniusz Tyszka
 Technical Faculty
 Hugo Kołłątaj University
 Balicka 116B, 30-149 Kraków, Poland
 E-mail: rttyszka@cyf-kr.edu.pl