



**HAL**  
open science

# Measurement of aggregates size distribution by inversion of angular light scattering

Chloé Caumont-Prim, Jérôme Yon, Alexis Coppalle, Kuan Fang Ren

## ► To cite this version:

Chloé Caumont-Prim, Jérôme Yon, Alexis Coppalle, Kuan Fang Ren. Measurement of aggregates size distribution by inversion of angular light scattering. *AAPP | Physical, Mathematical, and Natural Sciences*, 2011, 89 (S1), 4 p. 10.1478/C1V89S1P021 . hal-01613300

**HAL Id: hal-01613300**

**<https://hal.science/hal-01613300v1>**

Submitted on 12 Jan 2018

**HAL** is a multi-disciplinary open access archive for the deposit and dissemination of scientific research documents, whether they are published or not. The documents may come from teaching and research institutions in France or abroad, or from public or private research centers.

L'archive ouverte pluridisciplinaire **HAL**, est destinée au dépôt et à la diffusion de documents scientifiques de niveau recherche, publiés ou non, émanant des établissements d'enseignement et de recherche français ou étrangers, des laboratoires publics ou privés.

## MEASUREMENT OF AGGREGATE SIZE DISTRIBUTION BY INVERSION OF ANGULAR LIGHT SCATTERING

CHLOÉ CAUMONT-PRIM,<sup>a\*</sup> JÉRÔME YON,<sup>a</sup> ALEXIS COPPALLE,<sup>a</sup> AND KUAN FANG REN<sup>a</sup>

**ABSTRACT.** The aim of this work is to propose a new method for determining the size distribution of submicronic particles by inversion of the measured angular scattering of light. This method relies on the determination of a function  $R_g^*$  by angular scattering. The variation of this function informs us about the polydispersity of the aggregates size. We show that, by supposing the nature of the size distributions (lognormal), it is possible to determine the governing parameters of these distributions.

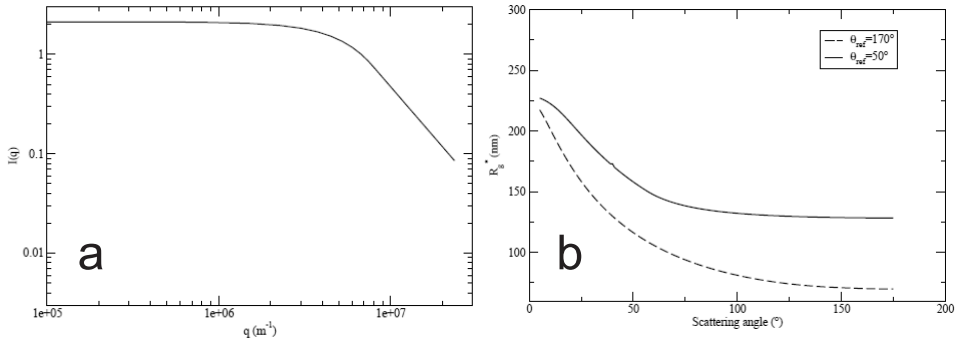
### 1. Scientific Context

Some non-spherical particles, like soot particles produced by combustion processes, have a fractal morphology. These particles give rise to numerous researches for their modelling and due to their important implications in human health, flame radiative transfer and climatic impact. The soot size distribution is often determined by using ex-situ granulometers, after sampling of the particles. But the quenching of aggregation process in the sampling is difficult and raises the problem of representativeness of the results [1].

To avoid this issue, it is interesting to use in-situ angular light scattering measurement which is non-invasive. As aggregates are not spherical, their specific morphology has to be taken into account. Aggregates are fractal because there is a power-law relationship between the aggregate size (gyration radius  $R_g$ ) and the aggregate mass (related to the number  $N_p$  of primary spheres in the aggregate):

$$N_p = k_f \left( \frac{R_g}{R_p} \right)^{D_f} \quad (1)$$

In the so-called fractal law Eq.(1),  $D_f$  is the fractal dimension,  $R_p$  is the radius of a primary sphere and  $k_f$  is the prefactor. Thanks to a simple theory called Rayleigh-Debye-Gans for Fractal Aggregates (RDG-FA theory) [2], measurement of static light scattering can be interpreted for determination of the gyration radius. The limitations of RDG-FA theory has been studied by Farias et al.[3]. The main assumption is due to the size of the concerned particles relatively to the wavelength and to their optical index  $\pi \frac{R_p}{\lambda} |m - 1| < 1$  where  $\lambda$  is the wavelength of the laser and  $m$  the complex refractive index. Refractive index of soot has been recently determined in visible range of wavelengths [4] and the corresponding criteria for  $R_p < 20nm$  (generally observed and admitted size) is lower than 0.75 for



**Figure 1.** Calculation of  $R_g^*$  functions from the scattering angular signal. (a) Theoretical measurement of angular scattering and (b) Theoretical  $R_g^*$  for two  $\theta_{ref}$ .

$0.1 < \lambda(\mu m) < 1.2$  making RDG-FA well adapted for soot particles. According to this theory, the intensity scattered by a single aggregate obeys the following equation:

$$I_{mono} = cN_p^2 f(q(\theta), R_g, D_f) \quad (2)$$

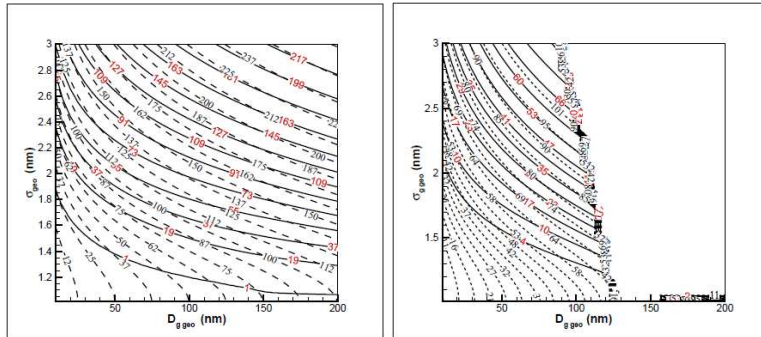
where  $\theta$  is the scattering angle,  $c$  the coefficient of proportionality - due to the sensibility of the detector,  $R_p$ ,  $\lambda$  and  $m$ . The function  $q$  is  $q(\theta) = \frac{4\pi}{\lambda} \sin(\frac{\theta}{2})$  and  $f$  is defined by :

$$f \Leftrightarrow \begin{cases} \exp(\frac{-(q(\theta)R_g)^2}{3}) & \text{if } (q(\theta)R_g)^2 < \frac{3}{2}D_f \\ (\frac{3D_f}{2e(q(\theta)R_g)^2})^{\frac{D_f}{2}} & \text{else} \end{cases} \quad (3)$$

For  $(q(\theta)R_g)^2 < \frac{3}{2}D_f$  is the Guinier regime and else is the Power Law regime. The inversion by RDG-FA to infer the gyration radius of monodisperse aggregates has been recently validated [5]. Some authors ([2],[6]) have proposed to determine the gyration radius of the polydisperse population by this technique. However two distinct radii can be found if particles are suspected to scatter only in Guinier or in Power-Law regime and this assumption cannot be done without knowing the researched size distribution.

Koylu and Faeth [7] and Iyer et al. [8] proposed an inversion method to calculate the characteristics of soot size distributions by coupling scattering and extinction measurements. But these inversion methods rely on the knowledge of the refractive index of soot and morphological parameters. Moreover Burr et al [9] showed mathematically, by using Bayes' theorem, the ill-posedness of the inverse problem.

In the present work a new inversion procedure is proposed to determine the aggregate log-normal size distribution parameters. This method needs measurements at only three angles and does not need the knowledge of the refractive index of soot, monomer size or fractal prefactor. It will be shown that inversion is well posed. The main difference of this method in comparison to more direct ones (that compare the scattering properties to one another) is the use of an intermediate function of aggregate size, representative of the polydisperse population.



**Figure 2.** Cartographies,  $\beta$  is plotted in dotted lines and  $\alpha$  in full lines. With (left)  $\theta_{ref}=50^\circ$   $\theta_1=15^\circ$   $\theta_2=130^\circ$ , and (right)  $\theta_{ref}=170^\circ$   $\theta_1=40^\circ$   $\theta_2=130^\circ$ .

**2. Principle of the inversion for determining the soot size distribution**

Our method consists in determining for each analyzed angle, by using the RDG-FA theory, a gyration radius  $R_g^*(\theta)$  of a monodispersed population which have the same optical behaviour as the real polydisperse population. By integrating the expression (2) over the entire population described by the size probability density function  $P(R_g)$ , we find the scattered light intensity  $I$  as function of the scattering angle expressed as  $q(\theta)$ , illustrated in Fig.(1a). This intensity corresponds to the theoretical signal predicted in the case of polydisperse aggregate size population:

$$I(\theta) = c \int N_p^2 f(q, R_g) P(R_g) dR_g \tag{4}$$

As  $c$  is difficult to be determined experimentally, the theoretical signal Eq.(4) is normalized by the measured intensity at a reference angle. We define a normalized function  $\Psi$ :

$$\Psi(\theta) = \frac{I(\theta)}{I(\theta_{ref})} = \frac{\int N_p^2 f(q, R_g) P(R_g) dR_g}{\int N_p^2 f(q_{ref}, R_g) P(R_g) dR_g} \tag{5}$$

Our method consists in searching the equivalent size  $R_g^*$  of a monodisperse population having at each scattering angle the same scattering properties as normalized function  $\Psi$ . This leads to solve the following equation:

$$\Psi(\theta) = \frac{I(\theta)}{I(\theta_{ref})} = \frac{f(q, R_g^*)}{f(q_{ref}, R_g^*)} \tag{6}$$

Figure 1b shows the theoretically obtained  $R_g^*$  for a log-normal size distribution calculated with  $D_f = 1.7$ , the geometric mean gyration diameter  $D_{ggeo} = 118nm$ , the standard geometric deviation  $\sigma_{geo} = 1.98nm$ ,  $\lambda = 532nm$  and  $\theta_{ref} = 50^\circ$  and  $\theta_{ref} = 170^\circ$ . The  $R_g^*$  curve depends on the reference angle chosen.

When the size distribution is monodisperse,  $R_g^*$  is constant for all  $\theta$ . The inversion can be done by using only three angles :  $\theta_{ref}$  and two other  $\theta_1$  and  $\theta_2$ .  $R_g^*$  values associated to this two angles can be used to define two parameters :  $\alpha = R_{g1}^* - R_{g2}^*$  and  $\beta = \frac{R_{g1}^* + R_{g2}^*}{2}$ . Figure 2 presents diagrams  $(\alpha, \beta)$  versus  $(D_{ggeo}, \sigma_{geo})$  for given  $(\theta_1, \theta_2, \theta_{ref})$ . The choice

of  $\theta_1$ ,  $\theta_2$  and  $\theta_{ref}$  has an important effect on the range of  $D_{ggeo}$  and  $\sigma_{geo}$  which can be found by inversion. The figure 2 (right) shows a bad choice of these three parameters. On the good diagram 2 (left) we observe only one intersection between  $\alpha$  and  $\beta$  curves. That indicates the uniqueness of the solution and the well-posedness of the inverse problem. One particle size distribution gives one couple  $(\alpha, \beta)$ .

## Acknowledgments

This work was supported by the French National Research Agency (ANR) grant n ANR-09-BLAN-023-02.

## References

- [1] F. X. Ouf, J. Yon, P. Ausset, A. Coppalle, M. Maillé, "Influence of Sampling and Storage Protocol on Fractal Morphology of Soot Studied by Transmission Electron Microscopy", *Aerosol Science and Technology* **Vol. 44, Issue 11**, pp. 1005-1017 (2010).
- [2] R. A. Dobbins, C. M. Megaridis, "Absorption and scattering of light by polydisperse aggregates", *Applied Optics* **Vol. 33, Issue 33**, pp. 4747-4754 (1991).
- [3] T. L. Farias, Ü. Ö. Köylü, and M. G. Carvalho, "Range of validity of the RayleighDebyeGans theory for optics of fractal aggregates", *Applied Optics* **Vol. 35, Issue 33**, pp. 6560-6567 (1996).
- [4] J. Yon, R. Lemaire, E. Therssen, P. Desgroux, A. Coppalle, K. F. Ren "Examination of wavelength dependent soot optical properties of diesel and diesel/rapeseed methyl ester mixture by extinction spectra analysis and LII measurements", *Applied Physics B* **DOI 10.1007/s00340-011-4416-4**, (2011).
- [5] C. Caumont-Prim, J. Yon, K. F. Ren, A. Coppalle, "Experimental study of the RDG-FA theory by angular light scattering on monodisperse aggregates", in *Proc. 26ème Congr Français sur les Arosols*, Paris, France, 2011;
- [6] Ü. Ö. Köylü "Quantitative analysis of in situ optical diagnostics for inferring particle/aggregate parameters in flames: Implications for soot surface growth and total emissivity", *Combustion and flame* **Vol. 109, Issue 3**, pp. 488-500 (1997).
- [7] Ü. Ö. Köylü, G. M. Faeth "Spectral extinction coefficients of soot aggregates from turbulent diffusion flames", *J. Heat Transfer* **Vol. 118, Issue 2**, pp. 415-422 (1996).
- [8] S. S. Iyer, T. A. Litzinger, S- Y. Lee, R. J. Santoro "Determination of soot scattering coefficient from extinction and three-angle scattering in a laminar diffusion flame", *Combustion and flame* **Vol. 149, Issue 1-2**, pp. 206-216 (2007).
- [9] D. W. Burr, K. J. Daun, O. Link, K. A. Thomson, G. J. Smallwood "Determination of the soot aggregate size distribution from elastic light scattering through Bayesian inference", *Journal of Quantitative Spectroscopy and Radiative Transfer* **Vol. 112, Issue 6**, pp. 1099-1107 (2010).

---

<sup>a</sup> UMR 6614 CORIA CNRS  
Université et INSA de Rouen  
Avenue de l'Université BP12  
76801 Saint Etienne du Rouvray cedex, France

\* To whom correspondence should be addressed | Email: chloe.caumont@coria.fr

Paper presented at the ELS XIII Conference (Taormina, Italy, 2011), held under the APP patronage; published online 15 September 2011.

© 2011 by the Author(s); licensee *Accademia Peloritana dei Pericolanti*, Messina, Italy. This article is an open access article, licensed under a [Creative Commons Attribution 3.0 Unported License](https://creativecommons.org/licenses/by/3.0/).