



**HAL**  
open science

## Investigation and FEA-based simulation of tool wear geometry and metal oxide effect on cutting process variables

Tchadja Kagnaya, Laurence Lambert, Myriam Lazard, Christine Boher,  
Thierry Cutard

► **To cite this version:**

Tchadja Kagnaya, Laurence Lambert, Myriam Lazard, Christine Boher, Thierry Cutard. Investigation and FEA-based simulation of tool wear geometry and metal oxide effect on cutting process variables. *Simulation Modelling Practice and Theory*, 2014, 42 (SI), p. 84-97. 10.1016/j.simpat.2013.12.009 . hal-01612002

**HAL Id: hal-01612002**

**<https://hal.science/hal-01612002v1>**

Submitted on 19 Sep 2018

**HAL** is a multi-disciplinary open access archive for the deposit and dissemination of scientific research documents, whether they are published or not. The documents may come from teaching and research institutions in France or abroad, or from public or private research centers.

L'archive ouverte pluridisciplinaire **HAL**, est destinée au dépôt et à la diffusion de documents scientifiques de niveau recherche, publiés ou non, émanant des établissements d'enseignement et de recherche français ou étrangers, des laboratoires publics ou privés.

# Investigation and FEA-based simulation of tool wear geometry and metal oxide effect on cutting process variables

Tchadja Kagnaya<sup>a,b,\*</sup>, Laurence Lambert<sup>a,1</sup>, Myriam Lazard<sup>c</sup>, Christine Boher<sup>a</sup>, Thierry Cutard<sup>a</sup>

<sup>a</sup> Université de Toulouse, ICA (Institut Clément Ader), Ecole des Mines Albi, Campus Jarlard, F 81013 Albi Cedex 09, France

<sup>b</sup> Université de Lorraine, Laboratoire d'Énergétique et de Mécanique Théorique et Appliquée, LEMTA CNRS-UMR 7563, Ecole Nationale Supérieure des Mines de Nancy (ENSMN), GIP-InSIC, 27 rue d'Hellieule, 88100 Saint-Dié-des-Vosges, France

<sup>c</sup> Institut PPrime UPR 3346, Département Fluide, Thermique et Combustion, Ecole Nationale Supérieure d'Ingénieurs de Poitiers (ENSIP), Bâtiment B25, Campus Sud, 2 rue Pierre Brousse, 86000 Poitiers, France

## A B S T R A C T

In machining, it is clearly noticed that the cutting tool wear influences the cutting process. However, it is difficult with experimental methods to study the effects of tool wear on several machining variables. Thus, in the literature, some earlier studies are performed separately on the effect of tool flank wear and crater wear on cutting process variables (such as cutting forces and temperature). Furthermore when the workpiece material adheres in cutting tool, it affects considerably the heat transfer phenomena. Accordingly, in this work the finite element analysis (FEA) is performed to investigate the influence of combination of tool flank and crater wear on the local or global variables such as cutting forces, tool temperature, chip formation on the one hand and the effects of the oxidized adhesion layer considered as oxide ( $\text{Fe}_2\text{O}_3/\text{Fe}_3\text{O}_4/\text{FeO}$ ) on the heat transfer in cutting insert on the other hand. In this investigation, an uncoated cutting insert WC-6Co and medium carbon steel grade AISI 1045 are used. The factorial experimental design technique with three parameters (cutting speed  $V_c$ , flank wear land  $VB$ , crater wear depth  $KT$ ) is used for the first investigation without adhesion layer. Then, only linear investigation is performed. The analysis has shown the influence of the different configurations of the tool wear geometry on the local or global cutting process variables, mainly on temperature and cutting. The simulation's results show also, the highly influence of the oxidized adhesion layer (oxide  $\text{Fe}_2\text{O}_3/\text{Fe}_3\text{O}_4/\text{FeO}$ ) on the heat transfer.

### Keywords:

Flank wear

Crater wear

Finite element analysis (FEA)

Oxidized adhesion layer ( $\text{Fe}_2\text{O}_3/\text{Fe}_3\text{O}_4/\text{FeO}$ )

## 1. Introduction

In machining of steels, thermal and mechanical effects are the main causes of dimensional inaccuracy and bad surface integrity of the finished product (such as mechanical properties, surface roughness). These thermal and mechanical effects are mainly due to the flank wear, crater wear and adhesion wear whose are directly related to cutting process variables (such as cutting forces and temperatures). So, experimental, analytical and numerical tool wear investigations are still a very challenging research issue. Indeed, tool wear phenomena are complex and involve many aspects related to cutting process. In the last decade, experimental studies are performed to investigate the tool wear effect on machined surface quality of manufactured products [1–3]. Matsumoto et al. [3] investigate the effect of cutting parameters on the residual stress in order to find

\* Corresponding author at: Université de Lorraine, Laboratoire d'Énergétique et de Mécanique Théorique et Appliquée, LEMTA CNRS-UMR 7563, Ecole Nationale Supérieure des Mines de Nancy (ENSMN), GIP-InSIC, 27 rue d'Hellieule, 88100 Saint-Dié-des-Vosges, France. Fax: +33 3 29 42 18 25.

E-mail address: [tchadja.kagnaya@insic.fr](mailto:tchadja.kagnaya@insic.fr) (T. Kagnaya).

<sup>1</sup> Present address: CERATIZIT Luxembourg S.a r.l., Route de Holzem, L-8201 Mamer, Luxembourg.

why deep residual stresses are created. They found that the tool edge geometry is the dominant factor deciding the residual stress profile. Han [4] and Han et al. [5] study the white layer formation due to phase transformation in orthogonal machining of AISI 1045 annealed steel. This investigation is performed at different cutting speeds and tool flank wear. They found that the depth of white layer formed in AISI 1045 depends on cutting speed and flank wear, but the tendency is not clearly identified. Remadna and Rigal [6] study the evolution of tool wear and cutting forces during time in the case of hard turning with cubic boron nitride (CBN) inserts. They found that the cutting forces increase gradually with the increase of the cutting distance and the tool flank wear. They also showed that the geometry of the cut evolves considerably relative to the tool lifetime, but tools wear does not directly or appreciably affect the manufactured surface. This last observation of Remadna and Rigal [6] is contrary with the results of Grzesik and Wanat [7] and Grzesik [8] studies. Indeed Grzesik and Wanat [7] found that flank wear affects directly surface roughness during the hard turning using differently shaped ceramic tools. They point out that the effect of flank wear on surface roughness is also due to temperature at the tool/flank wear land which can be high about 1000 °C. This high temperature can facilitate the material plastification and as a consequence the material side flow increases. These studies show that the influence of tool wear on machining process needs more investigation. Beside several experimental researches and because computers are more and more powerful, numerical methods are widely used to investigate cutting process. Finite element analysis is helpful to better understand and predict various variables in the cutting process such cutting force, temperature, strain, chip formation, tool wear, and heat transfer. Thus, recent research issues attempt to simulate cutting tool wear progression and its effects on various variables [9,10]. However, the modeling of tool wear phenomena and its coupling to the finite element cutting process are complex. Sometimes, tool wear geometry obtained with numerical cutting simulation does not represent the real tool wear geometry since numerical cutting simulation takes few milliseconds [11,12]. To better understand tool wear effect of different cutting process, it is relevant to study the effect of tool wear on cutting variables by using different geometries from the worn tool. Li et al. [13] used cutting process simulations to study the effects of crater wear on the chip formation process. Chen et al. [14] and Li and Liang [15] investigated the effects of flank wear land on cutting force, temperature, chip formation and residual stresses. These studies show that tool wear influences different cutting variables. However, these investigations deal separately with the effects of the flank wear and crater wear on the cutting process. In reality, in machining process, flank and crater wear appear and develop simultaneous and in particularly in high speed cutting even if one of both wear type can predominate. Moreover, during high machining of free carbon steel, important adhesion wear appears [16]. This adhesion layer is an oxides layer ( $Fe_2O_3/Fe_3O_4/FeO$ ) and can influence machining process. Frang and Zhang [17] found that the adhering layer formation during tool wear progression in turning of free-cutting stainless steel has a stronger protective effect on the rake face, and thus crater wear slows down. Gekonde and Subramanian [18] have shown that the seizure at the tool–chip contact controls the tribological condition and adhesion layer formation. Kudou et al. [19] have recently shown that the longer tool life could be obtained by diffusing Fe to the surface of cutting tool in comparison undiffusing Fe cutting tool. As literature review, the few machining process investigations deal with the influence of this adhesion layer on the cutting process variables, in particularly heat transfer phenomena which remain a challenge research area.

This work deals with finite element analysis of tool flank wear and crater wear combination effects on cutting process variables such as cutting forces, temperature on the one hand, and the effects of oxides layer ( $Fe_2O_3/Fe_3O_4/FeO$ ) on heat transfer on the other hand.

## 2. Experiment setup

To provide a consistent tool wear geometry for numerical simulations, turning tests are performed. A schematic experimental machining setup is shown in Fig. 1. The experimental work is carried out by turning a normalized medium carbon steel grade AISI 1045 (C45E) under dry machining. Two different speeds ( $V_c = 300$  m/min and 400 m/min) with a constant

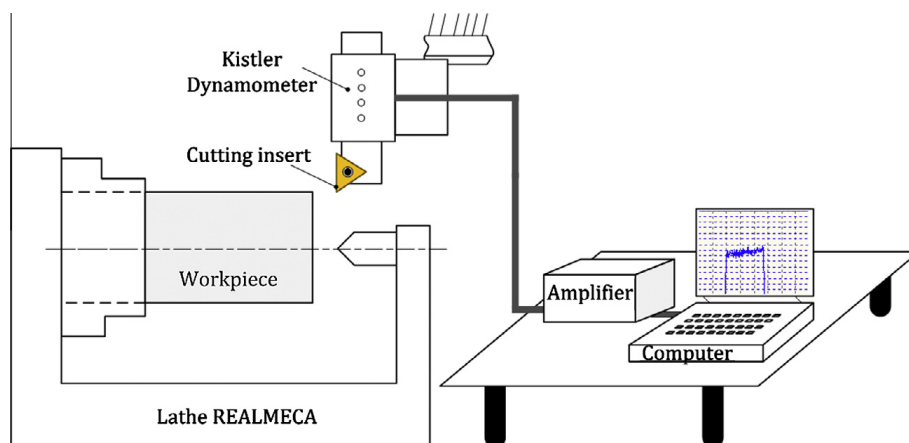


Fig. 1. Scheme of experimental setup for machining tests.

**Table 1**

Mechanical properties and chemical composition of AISI 1045 steel.

Components	C	Si	Mn	P	S	Cr	Ni	Mo	Cu
%wt	0.45	0.22	0.66	0.027	0.032	0.26	0.15	0.02	0.18
Yield strength (MPa)					437				
UTS (MPa)					704				

**Table 2**

Insert and tool holder geometry characteristics.

Components	Values	Material
Insert: TCMW 16T304	–	WC–6Co
Tool rake angle (°)	0	–
Tool clearance angle (°)	7	–
Cutting nose radius (mm)	0.4	
Cutting edge radius (mm)	0.04	
Holder STCGL 2525M16	0° of inclined angle	40CrMoV12

feed rate ( $f = 0.1$  mm/rev) and constant depth of cut ( $a_p = 1.1$  mm) are used for experimental tests. Table 1 gives the mechanical properties and the chemical composition of AISI 1045. Uncoated cemented carbide insert with an ISO designation TCMW 16T304 is used in this investigation. Cutting insert geometry definition is listed in Table 2. The cutting insert is fixed on tool holder of the standard ISO designation STGCL 2525M16. KISTLER Model 9257B dynamometer is used to measure the three components of the cutting forces (main cutting force “tangential”  $F_c$ , feed force “axial”  $F_f$ , and depth of cut force “radial”  $F_p$ ) during cutting tests. After each cutting, the tool-chip contact length, the flank wear land length and crater wear depth are measured for finite elements analyses.

### 3. Modeling procedures of the numerical simulations

#### 3.1. Tool geometry definition parameters

After cutting tests, tool wear analyses are performed to measure some tool wear parameters. Fig. 2 shows an example of macroscopic wear view of flank wear and crater wear obtained with light optic microscopy (LOM) and confocal optical scanning microscopy (COSM). The detail of this investigation can be found in [16]. The flank wear parameter VB (Fig. 2a) is measured with LOM and others wear parameters processing (KT, KM and KW) are obtained with COSM (Fig. 2c–e). Fig. 2c allows measuring the tool-chip contact length and deducing the value of the parameter KM shown in Fig. 3a. Fig. 2d shows that the average crater depth is about 20  $\mu\text{m}$  for cutting speed of 400 m/min. Fig. 2e shows 3D images of worn tool pattern at 400 m/min cutting speed. The observation of Fig. 2e clearly shows that the profile of the crater wear in the  $xz$ -plane is quasi-independent of the  $y$ -axis. So, all numerical simulation’s investigations to study the effects of tool wear on machining process variables are performed on 2D orthogonal cutting process with the finite element software DEFORM 2D V9.1, even if the experimental machining tests are performed at 3D orthogonal cutting process. Indeed, the influence of the depth of cut on the cutting wear is generally insignificant in turning cutting process. Moreover Fig. 2b shows an important adhesion layer in crater wear land. Thus, a cross section perpendicularly to the cutting edge (Fig. 2b) leads to observe and quantify adhesion layer thickness (considering as oxide  $\text{Fe}_2\text{O}_3/\text{Fe}_3\text{O}_4/\text{FeO}$ ). So, during FEA analyses, the worn tool with an adhesion layer is considered as a coating tool with WC–Co as substrate as adhesion layer thickness as rigid coating layer (Fig. 3b). Detail SEM micrograph presented in Fig. 3a shows an important adhesion layer in both flank and crater wear land. Based on Fig. 3a, the average thicknesses of adhesion layers are measured. These vary from 1 to 7  $\mu\text{m}$ . However, locally the thickness of adhesion layers up to 15  $\mu\text{m}$ . Based on the analysis and measurement of tool wear parameters, geometrical models of worn tools are drawn (see scheme example of the worn tool in Fig. 3b).

According to the experiments, two strategies of cutting process simulation are performed. At the first time, based on the cutting tool wear parameters measured, a set of simulations base on statistical design of experiments (DOE) technique is used to investigate the effects of tool wear on cutting process variables. The DOE is a statistical technique that provides an objective measure of how design parameters are correlated and the effective contribution of each one at the design performance. More detail of this technique can be found in [21]. Two levels of three factors full factorial design is used. The three design factors considered in the design of the experiments are cutting speed ( $V_c$ ), tool flank wear (VB) and crater wear depth (KT). The levels of the variables are listed in Table 3. In the second time, the cutting process simulations are performed in order to study the effects of adhesion layer thickness on the cutting process variables, in particularly on the heat transfer. In this last study, the cutting speed ( $V_c$ ), tool flank wear (VB) and crater wear depth (KT) are kept constant while the adhesion layer thickness ( $t_{Ad}$ ) varies. The adhesion layer thicknesses ( $t_{Ad}$ ) are selected according to the tool wear investigations. Table 4 shows the corresponding  $V_c$ , VB, KT and  $t_{Ad}$  values.

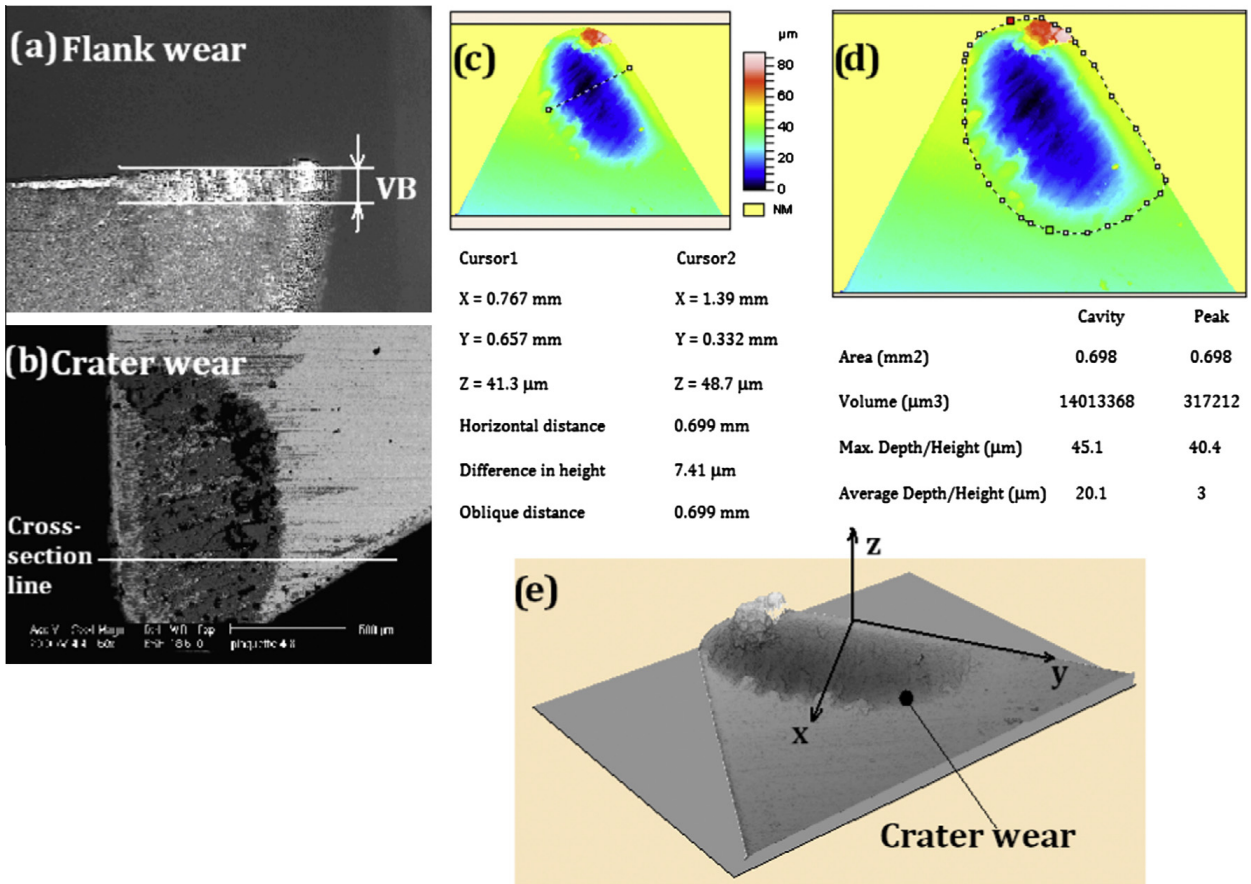


Fig. 2. (a) Tool flank wear, (b) tool crater wear, (c-d) 2D crater wear topography (e) 3D crater wear topography ( $V_c = 400$  m/min,  $f = 0.1$  mm/rev and  $a_p = 1.1$  mm) [16,20].

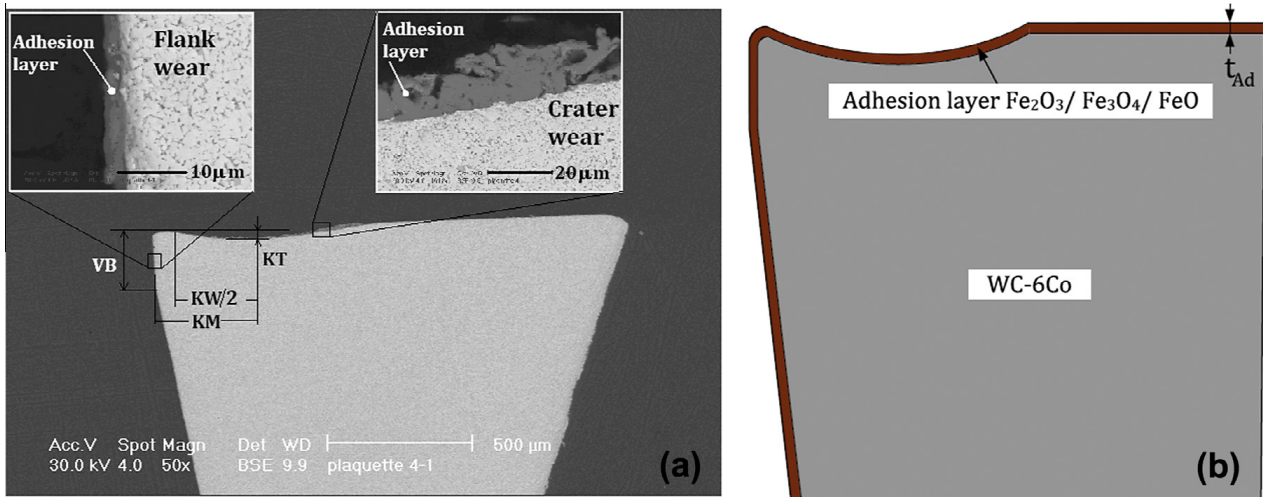


Fig. 3. (a) Cross-section, perpendicular at the cutting edge and detail of adhesion layer on tool flank wear and on tool crater [16]. (b) Tool wear geometry with adhesion layer model.

**Table 3**  
Design scheme of process parameters and their levels.

Variable name	Low level (-1)	High level (+1)
Cutting speed $V_c$ (m/min)	300	400
Tool flank wear VB (μm)	100	200
Tool crater wear KT (μm)	20	30

**Table 4**  
Adhesion layer thickness variation.

Variable name	Values			
Adhesion layer thickness $t_{Ad}$ ( $\mu\text{m}$ )	1	3	5	7
Cutting speed $V_c$ (m/min)	400			
Tool flank wear $VB$ ( $\mu\text{m}$ )	200			
Tool crater wear $KT$ ( $\mu\text{m}$ )	30			

**Table 5**  
Johnson–Cook thermo-viscoplastic parameters of AISI 1045 [22].

$A$ (MPa)	$B$ (MPa)	$n$	$C$	$m$	$\dot{\epsilon}_{p0}$ ( $\text{s}^{-1}$ )	$T_r$ ( $^{\circ}\text{C}$ )	$T_m$ ( $^{\circ}\text{C}$ )
553.1	600.8	0.234	0.0134	1	1	20	1460

**Table 6**  
Thermo-physical and mechanical properties of AISI 1045 and WC–6Co.

<i>Tool WC–6Co [16,23]</i>							
Thermal conductivity	Temperature ( $^{\circ}\text{C}$ )						
	Value ( $\text{W/m } ^{\circ}\text{C}$ )	20	100	200	300	500	600
		117	110	97	86	85	83
Specific heat ( $\text{J/kg } ^{\circ}\text{C}$ )		222					
Density ( $\text{kg/m}^3$ )		14,900					
Young modulus (MPa)		600,000					
<i>Adhesion layer (<math>\text{Fe}_2\text{O}_3/\text{Fe}_3\text{O}_4/\text{FeO}</math>) [24–26]</i>							
Thermal conductivity ( $\text{W/m } ^{\circ}\text{C}$ )		20					
Specific heat ( $\text{J/kg } ^{\circ}\text{C}$ )		644					
Density ( $\text{kg/m}^3$ )		5250–5800					
Young's modulus (MPa)		150,000–350,000					
<i>Workpiece AISI 1045 [27]</i>							
Thermal conductivity ( $\text{W/m } ^{\circ}\text{C}$ )		$-2 \times 10^{-5} T^2 - 0.0211 T + 53.965$ ( $100^{\circ}\text{C} < T < 800^{\circ}\text{C}$ )					
Specific heat ( $\text{J/kg } ^{\circ}\text{C}$ )		$420 + 0.504 T$					
Density ( $\text{kg/m}^3$ )		7800					
Thermal expansion ( $\text{m/m/}^{\circ}\text{C}$ )		$12 \times 10^{-6}$					
Young's modulus (MPa)		210,000					

### 3.2. Workpiece and tool material properties

A Johnson–Cook type constitutive equation is used to describe the thermo-viscoplastic behavior of AISI 1045. The flow stress is given as follows:

$$\sigma_p(\epsilon_p, \dot{\epsilon}_p, T) = (A + B\epsilon_p^n) \left[ 1 + C \ln \left( \frac{\dot{\epsilon}_p}{\dot{\epsilon}_{p0}} \right) \right] \left[ 1 - \left( \frac{T - T_r}{T_m - T_r} \right)^m \right] \quad (1)$$

where  $A$  and  $B$  are the material constants,  $C$  is the strain rate sensitivity,  $n$  is the strain-hardening,  $m$  is the thermal softening exponent,  $\epsilon_p$  is the equivalent plastic strain,  $\dot{\epsilon}_p$  is the plastic strain rate ( $\text{s}^{-1}$ ),  $\dot{\epsilon}_{p0}$  is the reference of plastic strain rate ( $\text{s}^{-1}$ ),  $T$  is the temperature,  $T_m$  is the material melting temperature and  $T_r$  is the reference temperature. The AISI 1045 steel parameters for Johnson–Cook model are listed in Table 5. The tool is considered as a rigid body with a very large elastic modulus and the oxide adhesion layer is considered uniform. The physical properties of AISI 1045, WC–6Co and adhesion layer are presented in Table 6.

### 3.3. FEA geometry and boundary conditions

An example of FEA geometry configuration of the cutting process is presented in Fig. 4. All numerical cutting simulations are performed at the same time equal to 5 ms. Except cutting temperatures, this cutting simulation time allows for a stable regime for cutting forces, chip formation, etc. It is assumed that the top and right boundaries of the tool, and the left and bottom boundaries of the workpiece are maintained at a constant reference temperature  $T_r$ . During numerical cutting simulations, the cutting tool is maintained fixe and the workpiece move according to the top boundary of the workpiece (Fig. 4). For all simulations, the cutting depth is kept constant with 0.1 mm. The cutting tool and workpiece are meshed with a plane strain coupled linear displacement/temperature 4 nodes element. The workpiece and cutting tool are meshed about 2000 elements respectively 800 elements. As one can see in Fig. 4, the parts of workpiece and cutting tool near of tool/workpiece contact zones are refined with a minimum element size equal 4  $\mu\text{m}$  for workpiece and 6  $\mu\text{m}$  for cutting tool. When the

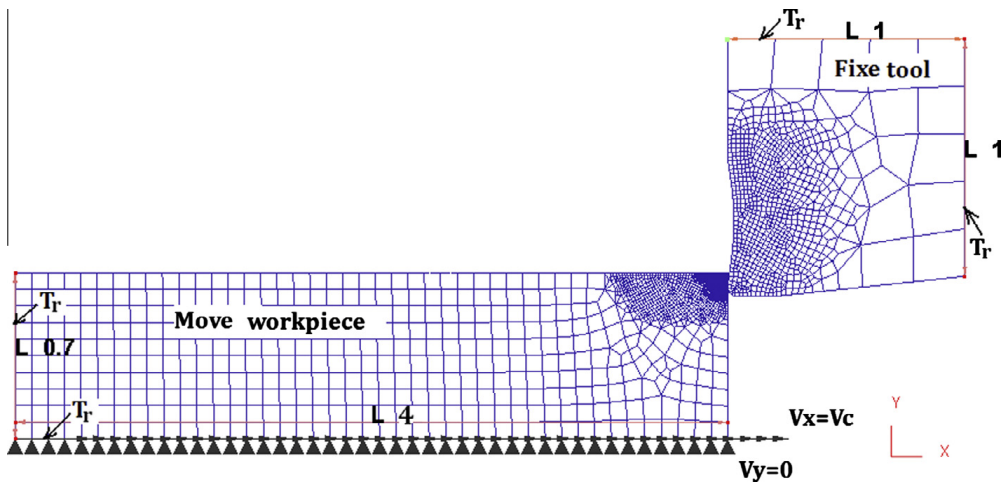


Fig. 4. FEA geometry configuration of the cutting process, mesh and dimensions (in mm) of the workpiece and cutting tool.

cutting tool advances into the workpiece, it generates two mainly issues at the tool/workpiece interface. The first one is the friction between the tool rake face and chip, and between the tool flank face and the machined surface on the workpiece. In metal cutting process, sticking friction takes place in the region near to the cutting edge in which the chip is intimately in contact with chip. Thus, shear friction corresponds to a more accurate tribological phenomenon in this region. For the rest region of chip-rake face contact and the region of workpiece-flank face contact, sliding friction appears. However, in this investigation, the Coulomb's friction coefficient is assigned for all contact between tool and workpiece based upon the assumption that sticking friction region is small. According to the experimental results [16], constant friction coefficient of 0.6 is adopted. The second problem concerning the tool-workpiece interface is heat transfer phenomenon. Cutting tool has two main sources due to the deformation work on the primary shear zone and to the friction between tool and workpiece. Only a few part of those heat sources flows into cutting tool. But major problem in cutting process simulation is to introduce a more accurate consistent interface heat transfer coefficient parameter  $hc$ . However, this parameter is very difficult in experimental device. Umbrello et al. [28] show that  $hc$  depend on the cutting parameters and hence cutting temperature and tool rake pressure. They found that heat transfer coefficient parameter  $hc$  increases with cutting speed and rake face contact pressure for low conventional cutting speed. However, it is well known that in high machining process, the rake face contact pressure decreases when cutting speed increases and resulting of  $hc$  decreasing. Based upon the Umbrello et al. [28] results, heat transfer  $hc = 100 \text{ N s}^{-1} \text{ mm}^{-1}$  is chosen in all cutting simulations.

## 4. Results and discussion

### 4.1. Effects of tool wear geometry on cutting forces

Cutting simulations with initial (unworn) tool geometry are achieved before performing the tool wear geometry on cutting process variables. The measured cutting and feed forces compared with those obtained by orthogonal cutting simulation are listed in Table 7. It can be observed that the experimental cutting force and feed force are 30% respectively 40% higher compared to numerical ones. These differences between experimental cutting forces and orthogonal cutting simulation are mainly due to the cutting nose radius. Indeed, the results of the previous study [29] showed a better correlation between experiences and numerical results. These observations are consistent with the experimental results presented by Arsecularatne et al. [30], which showed that the increase in the cutting nose radius involves an increase in the cutting forces. However the set of orthogonal cutting simulations with tool wear geometry is validated according of the experimental results presented by Han [4]. Table 8 shows the measured cutting and feed forces obtained by Han [4] by using cutting tool with  $100 \mu\text{m}$  of flank wear land compared with those obtained by orthogonal cutting simulation with a same flank wear land and two different crater wear depths. It can be observed a more accurate agreement between experimental cutting forces and numerical one compared to the feed forces. Table 8 shows also that the increasing crater wear resulting to decreasing all the cutting forces.

Table 7  
Comparison of experimental [16] and numerical cutting forces.

Cutting speed	Fc (N/mm)		Ff (N/mm)		Max. of Tool temp. (°C)	Avg. of workpiece Temp. T_wp (°C)
	Exp.	Num.	Exp.	Num.		
300 m/min	320	222	225	134	592	214
400 m/min	307	211	210	124	839	227

**Table 8**Comparison of experimental [4] and numerical cutting forces for  $V_c = 300$  m/min,  $VB = 100$   $\mu$ m.

	$F_c$ (N/mm)	$F_f$ (N/mm)	Max. of Tool Temp. ( $^{\circ}$ C)	Avg. of workpiece Temp. $T_{wp}$ ( $^{\circ}$ C)
Exp. values [4]	240	140	–	–
Num. values, $KT = 20$ $\mu$ m	246	164	834	329
Num. values, $KT = 30$ $\mu$ m	235	153	915	334

Fig. 5 shows the main effect of  $V_c$ ,  $VB$  and  $KT$  on cutting force and feed force and their interaction effects. As it is clear from Fig. 5a and b,  $V_c$  and  $KT$  produce the same effect on cutting and feed forces. Increases  $V_c$  or  $KT$  leads to decrease cutting generally forces. As known, the heat generated in machining increases with increasing cutting speed, hence produces workpiece material thermal softening. This phenomenon can explain the decreasing of the cutting and feed forces with increasing cutting speed. The effects of  $KT$  on cutting forces can be considered as the effects produced by cutting rake angle on cutting forces. So, it is clear that the decreasing of the cutting and feed forces with increasing cutting  $KT$  is in agreement with Caprino et al. [31] results.  $VB$  effect on cutting force and feed force is also depicted in Fig. 5a and b. It can be seen that increasing  $VB$  involves an increase of cutting and feed forces. This is attributed to the increasing of the contact area between tool and workpiece machined surface. Fig. 5c and d show the duals  $V_c \times VB$ ,  $V_c \times KT$  and  $VB \times KT$  interaction effects on the cutting and feed forces respectively. One can see that duals  $V_c \times VB$  and  $VB \times KT$  are only significant interaction effects while the  $V_c \times KT$  has less or insignificant interaction. This analysis shows that it is important to couple crater wear and flank wear to better achieve the tool wear effects on cutting process variables.

#### 4.2. Effects of tool wear geometry on cutting temperature

In this section, the analysis of the effect of tool wear on the temperature is only qualitative because for the cutting simulation time = 5 ms, the heat transfer in the tool remains transient.

Fig. 6 shows a simulated temperature distribution obtained for cutting speed  $V_c = 400$  m/min and  $V_c = 300$  m/min at different cutting tool geometry. The same contour scale of the temperature distribution is used to a better global view

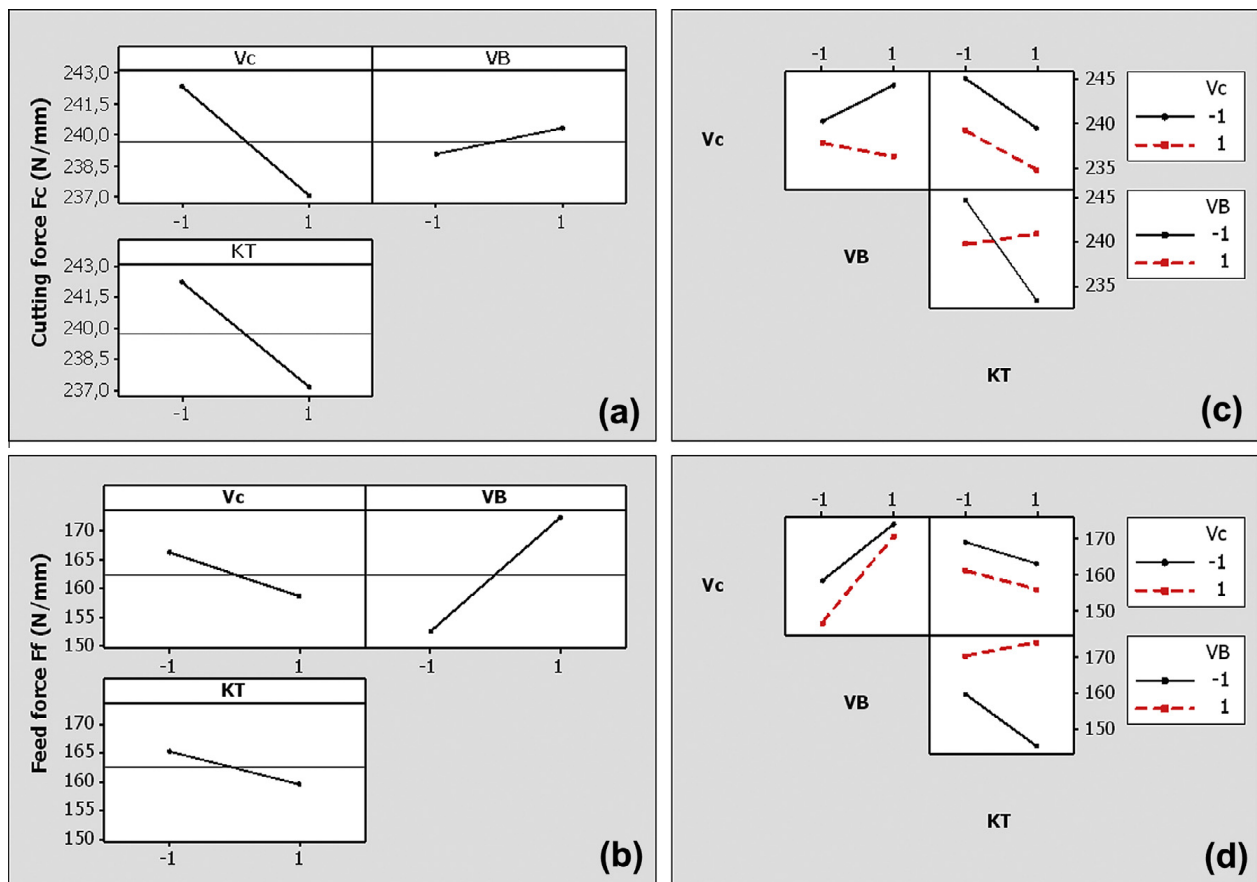


Fig. 5. Main effects of  $V_c$ ,  $VB$  and  $KT$  on cutting force (a) and feed force (b). Dual interactions effects between  $V_c$ ,  $VB$  and  $KT$  on cutting force (c) and feed force (d).



comparison. One can notice that the maximum temperature cutting tool is higher for  $V_c = 400$  m/min (Fig. 6a) compared with  $V_c = 300$  m/min (Fig. 6b). This confirms that increasing cutting speed produces workpiece material thermal softening, hence reduction of the cutting and feed forces. Fig. 6c and d show tool wear effect on temperature distribution in comparison with temperature distribution of new tool (Fig. 6b). As seen from Fig. 6, the maximum temperature of cutting is located on flank wear land, so the average temperature along the flank wear is considered for tool wear effects on tool temperature analysis. The workpiece surface temperature is also analyzed based on average temperature obtained in zone 2 along of machined surface (Fig. 7).

Fig. 7 presents the influence of  $VB$ ,  $KT$  and  $t_{Ad}$  on the workpiece surface temperature. Curve 1 illustrated the evolution of the workpiece surface temperature when unworn tool in used. It is clearly observed in Fig. 7 that the flank wear and the crater wear cause an increase of the temperature of the machined surface (curve 2) in comparison of that obtained with new cutting tool (curve 1). This is due to the increasing of the contact area between tool and workpiece machined surface, which generates more friction heat source. On the other hand comparing curves 2 and 3, it notes that at  $KT$  constant,

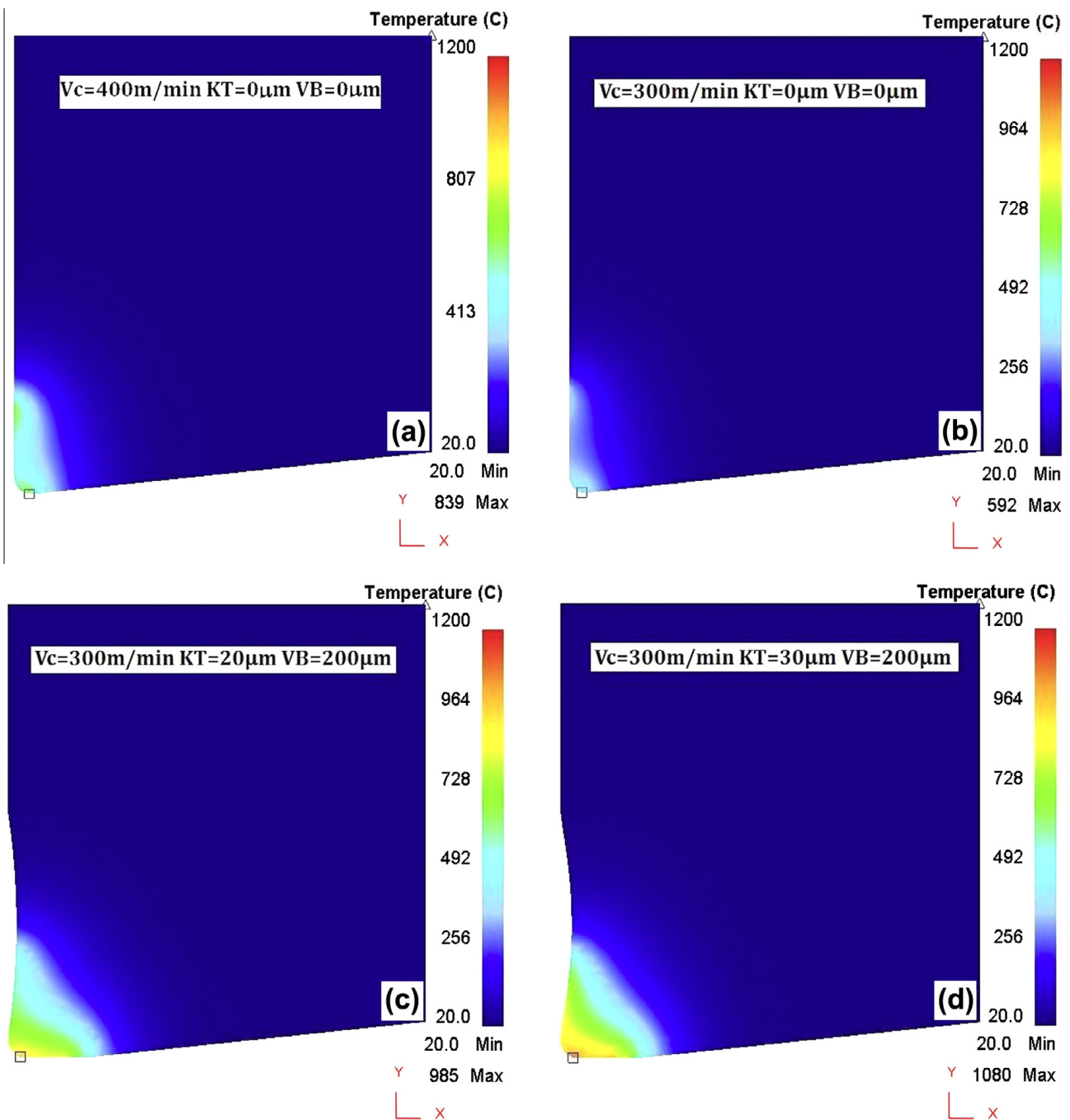
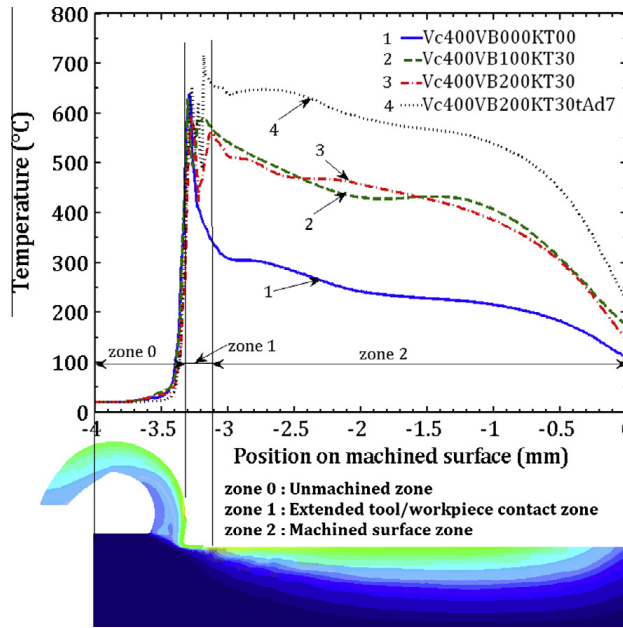
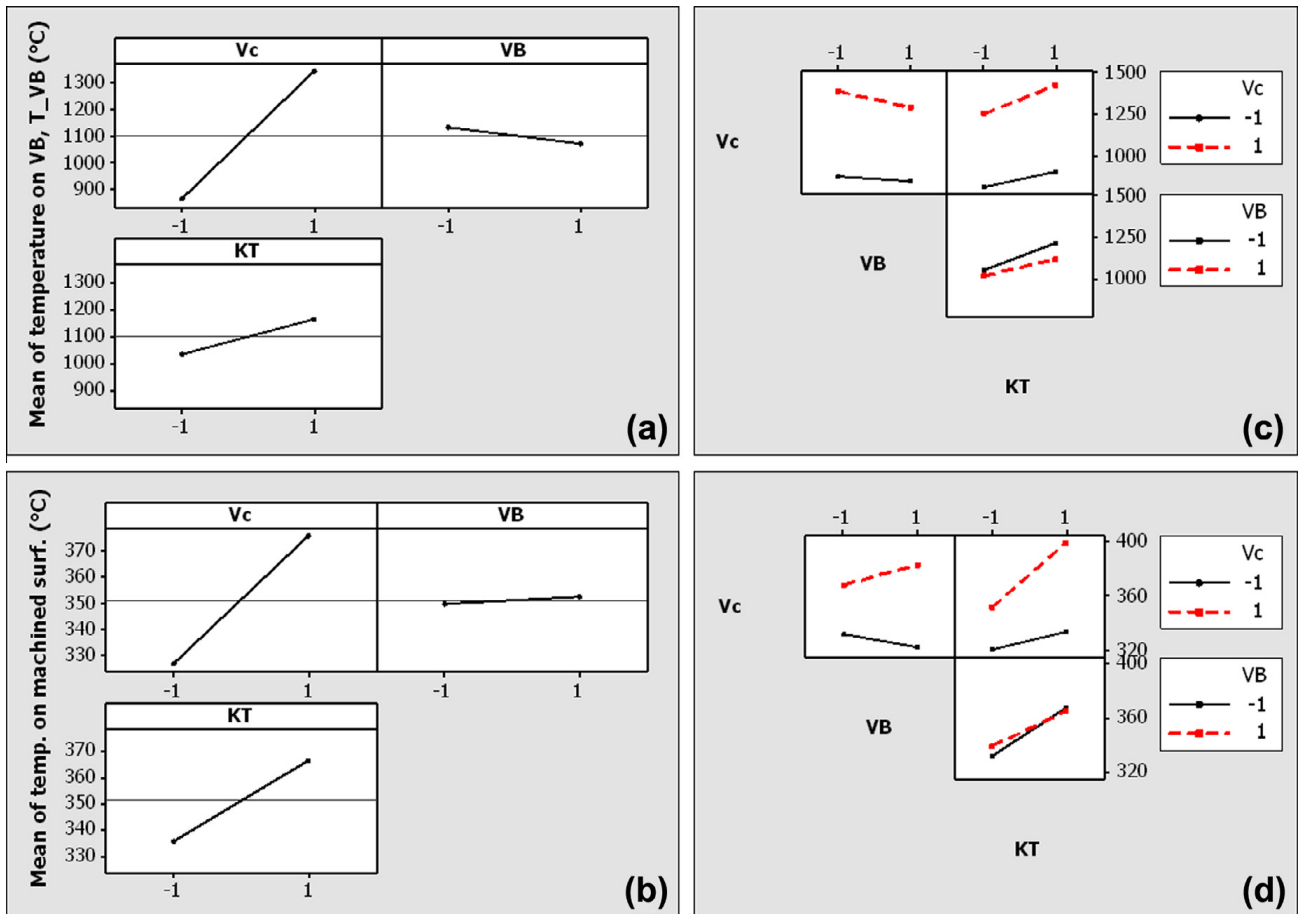


Fig. 6. Cutting tool temperature distribution for unworn tool at (a)  $V_c = 400$  m/min, (b)  $V_c = 300$  m/min and for two configurations of cutting tool wear geometry at (c)  $V_c = 300$  m/min,  $VB = 200 \mu\text{m}$ ,  $KT = 20 \mu\text{m}$  and (d)  $V_c = 300$  m/min,  $VB = 200 \mu\text{m}$ ,  $KT = 30 \mu\text{m}$ .



**Fig. 7.** Cutting temperature evolution along the machined surface for different cutting tool geometry: constant cutting speed  $V_c = 400$  m/min, variable flank wear  $VB = (0, 100$  and  $200 \mu\text{m})$ , variable crater wear deep  $KT = (0$  and  $30 \mu\text{m})$  and adhesion layer thickness  $t_{Ad} = 7 \mu\text{m}$  (example of detail of legend:  $Vc400VB200KT30tAd7 =$  cutting speed  $V_c = 400$  m/min, flank wear  $VB = 100 \mu\text{m}$ , crater wear deep  $KT = 30 \mu\text{m}$  and adhesion layer thickness  $t_{Ad} = 7 \mu\text{m}$ ).



**Fig. 8.** Main effects of  $V_c$ ,  $VB$  and  $KT$  on flank wear land temperature, (a) and on machined surface (b). Dual interactions effects between  $V_c$ ,  $VB$  and  $KT$  on flank wear land temperature (c) and on machined surface (d).

increasing  $VB$  has a relatively insignificant effect on the temperature of the machined surface. The effect of the adhesion layer can be established by comparing cutting temperatures between curves 3 and 4. Indeed, the adhesion layer plays the role of thermal barrier due to its low conductivity and its high specific heat capacity compared to that of workpiece (Table 6). Thus,

the heat flux flows easily in the workpiece, which leads to a significant increase in temperature at workpiece during machining.

Fig. 8 shows the main effect of  $V_c$ ,  $VB$  and  $KT$  on the average cutting tool temperature along the flank wear land ( $T_{VB}$ ) and the average temperature of the workpiece machined surface ( $T_{wp}$ ) and their interaction effects. As observed previously for the cutting forces, it is clear from Fig. 8a and b that increasing  $V_c$  and  $KT$  values cause an increase of the average cutting tool and the workpiece surface temperatures whose have negative effect on the machined surface quality. However,  $V_c$  has more effect on  $T_{VB}$  and  $T_{wp}$ . In contrary  $VB$  has less effect on both  $T_{VB}$  and  $T_{wp}$  temperatures. The increasing  $T_{VB}$  and  $T_{wp}$  with the increasing  $V_c$  and  $KT$  can be explained by the fact that the heat source due to plastic deformation in the shear zone and the heat source due to the intense friction between the chip and the rake face are more important compared to the heat source due to friction between the workpiece surface and the tool flank wear land. Indeed, in machining process, the increase of cutting speed induces the plastic deformation increasing, hence generating heat source in shear zone and secondary deformation zone.

The duals  $V_c \times VB$ ,  $V_c \times KT$  and  $VB \times KT$  interaction effects on the average cutting tool and workpiece surface temperatures are illustrated in Fig. 8c and d respectively. Fig. 8c and (d) show that duals  $V_c \times VB$  and  $V_c \times KT$  have only significant interaction effects which is consistent with the previously discussion on the mean effects above. The absence of an important dual  $VB \times KT$  interaction effect on  $T_{VB}$  and  $T_{wp}$  is mainly due to the  $VB$  effect as it can be seen in Fig. 8a and b.

#### 4.3. Effects of tool wear geometry on chip formation

The main effects of  $V_c$ ,  $VB$  and  $KT$  on chip thickness values are plotted in Fig. 9a.  $V_c$  and  $KT$  have a negative effect. However  $VB$  effect on chip thickness is not significant. These results suggest that the increase of  $V_c$  and  $KT$  involves a decrease a chip thickness. The decreasing of chip thickness tends to produce aperiodic or periodic saw tooth chip or segmentation chip. This is in agreement with the evolutions of temperatures observed previously. Indeed in machining process, a transition from a continuous to a shear localized chip occurs as the machining temperature is increased. The effects of interaction between  $V_c$ ,  $VB$  and  $KT$  are plotted in Fig. 9b. All the interactions are slight effects on chip thickness. It can be seen from Fig. 9b that the duals  $V_c \times VB$  and  $VB \times KT$  have more significant effect on chip thickness in comparison of dual  $V_c \times KT$  one. Moreover, the inner ( $R_i$ ) and outer ( $R_e$ ) chip curvature radius obtained in cutting simulations are analyzed in order to better understanding the morphology of the chip. Important negative effect is observed for  $V_c$  whereas a positive effect is observed for  $KT$  on both ( $R_i$ ) and ( $R_e$ ) as depicted in Fig. 10a and b. The significant but less important positive effect for  $VB$  is also observed. The negative effect observed for  $V_c$  can be reasonable explained with thermoelastic stress of the chip. As it is noticed previously, increasing cutting speed resulting in increase chip temperature. However the free surface of the chip is exposed to the air in dry machining. Thus, the important heat gradient, which appears in the chip thickness, generates a high compressive and high tension stresses on free face of chip respectively on chip face in contact with tool rake face. This phenomenon will tend to produce more and more curved chips. A positive effect observed for  $KT$  can be related to an artificial increase in the rake angle. This observation is in agreement with Joshi et al. [32] results who observe that the chip curvature radius increases with the increase of cutting rake face. Binary  $V_c \times VB$ ,  $VB \times KT$  and  $V_c \times KT$  interactions effect on the both inner ( $R_i$ ) and outer ( $R_e$ ) chip curvature radius are plotted in Fig. 10b and d.

#### 4.4. Effects of metal oxide adhesion layer on temperature and cutting forces

To study the adhesion layer on cutting process variables, the tool wear geometry is created and the adhesion layer is added as coating thickness. Table 9 lists some cutting process output variables according for different adhesion layer

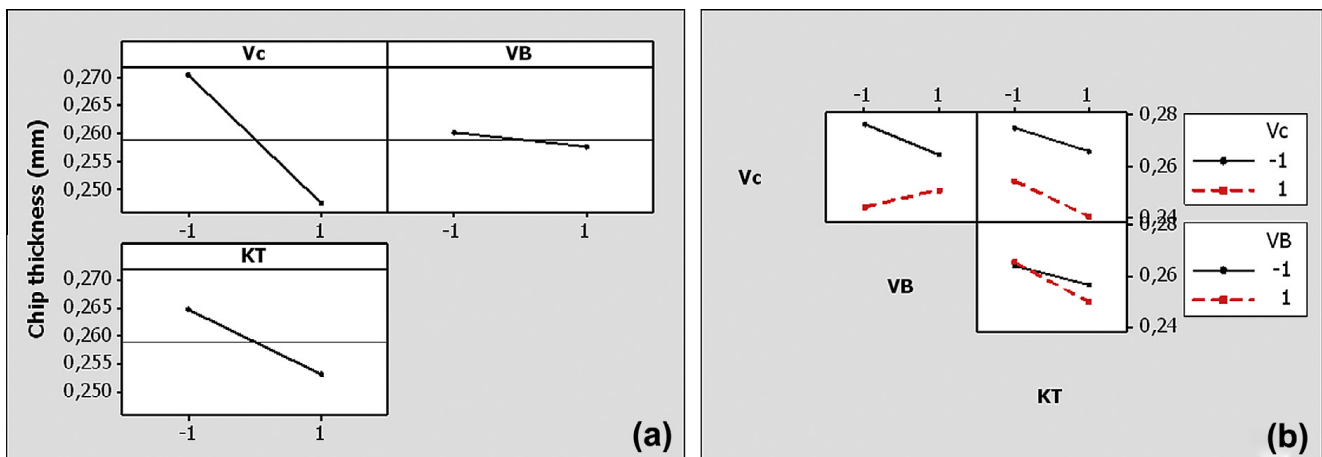
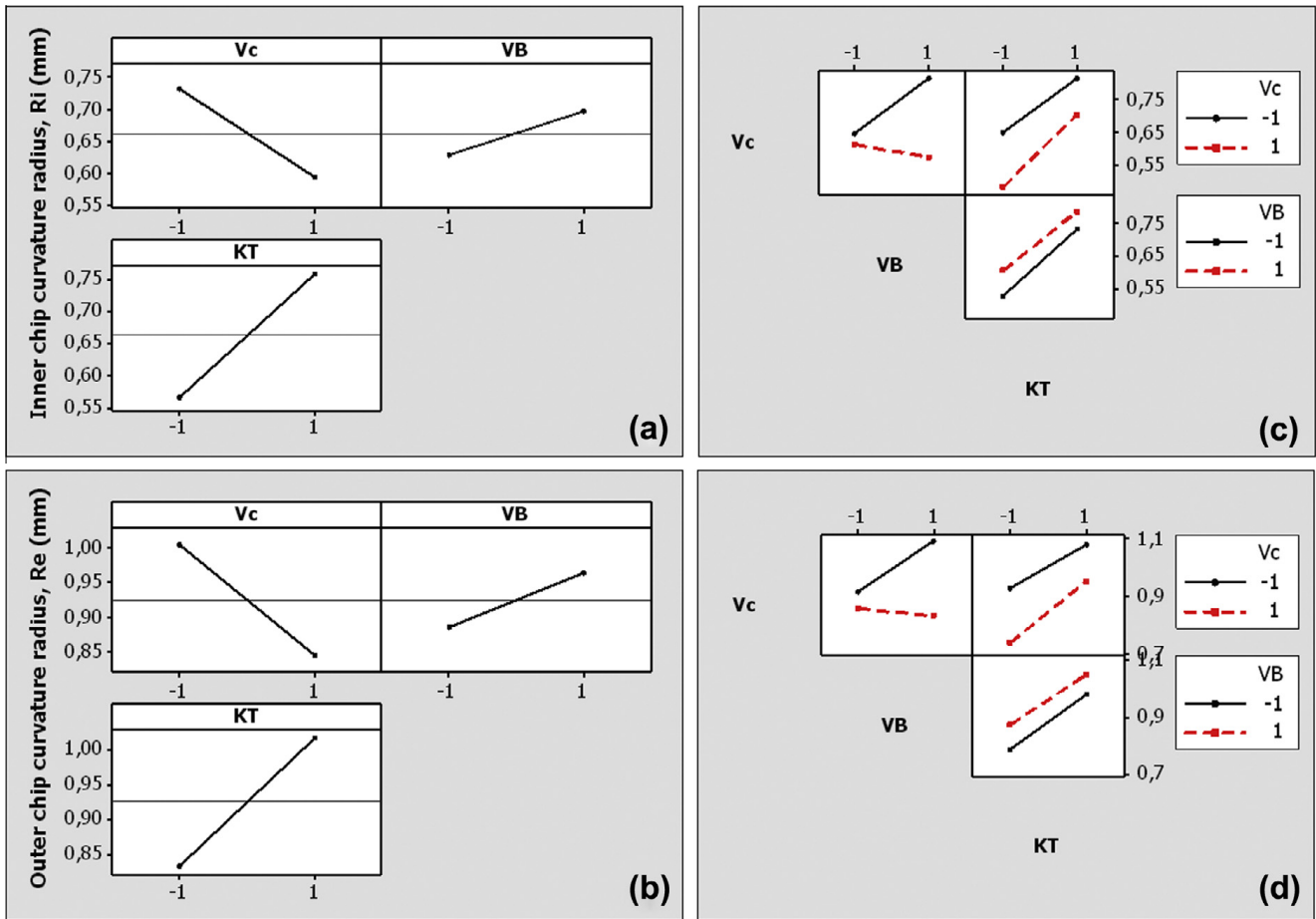


Fig. 9. (a) Main effects of  $V_c$ ,  $VB$  and  $KT$  on chip thickness, (b) Interactions between  $V_c$ ,  $VB$  and  $KT$  on chip thickness.



**Fig. 10.** Main effects of Vc, VB and KT on inner curvature radius (a) and outer curvature radius (b). Dual interactions effects between Vc, VB and KT on inner curvature radius (c) and outer curvature radius (d).

**Table 9**

Adhesion layer thickness variation effects on cutting process variables.

Variable name	Values					
	0	1	3	5	7	
Adhesion layer thickness $t_{Ad}$ ( $\mu\text{m}$ )	0	1	3	5	7	
Cutting force $F_c$ (N/mm)	237	251	224	223	225	
Feed force $F_f$ (N/mm)	175	171	149	149	154	
Mean temperature on flank wear ( $T_{VB}$ , $^{\circ}\text{C}$ )	1343	1266	836	843	877	
Mean temperature on machined surface ( $T_{wp}$ , $^{\circ}\text{C}$ )	398	355	492	466	540	
Max temperature of chip ( $T_{chip}$ , $^{\circ}\text{C}$ )	738	749	917	918	934	
Chip thickness (mm)	0.247	0.257	0.231	0.230	0.230	
Chip curvature (mm)						
	Inner radius, Ri	0.65	0.56	0.35	0.35	0.30
	Outer radius, Re	0.91	0.84	0.57	0.58	0.54

thickness. As one can notice it in [Table 9](#), cutting process variables (cutting forces, chip temperature, workpiece machined surface temperature, etc.) do not evolve linearly. Increase adhesion layer thickness leads to the reduction of the cutting force except for adhesion layer thickness  $t_{Ad} = 1 \mu\text{m}$  in which it takes the highest value. Globally, the feed force decreases with the increase of the adhesion layer thickness. The effect of the adhesion layer on the cutting tool temperature distribution is illustrated in [Fig. 11](#). It can be observe in [Fig. 11](#) that the adhesion layer promotes highly decreasing of the cutting tool temperature. However, the maximum cutting tool temperature ([Fig. 11](#)) or average temperature of flank wear land decreasing does not follow a linear trend with the adhesion layer thickness. The cutting tool temperature listed in [Table 9](#) suggested that for the adhesion layer thickness a value of  $t_{Ad} \leq 3 \mu\text{m}$ , the average temperature of flank wear land decreases highly with the increase in adhesion layer thickness. This phenomenon suggests that the thin adhesion layer thickness has slightly effect on heat transfer. Indeed the unit thermal resistance computed as ratio of (adhesion thickness) over (thermal conductivity of adhesion) for thin adhesion layer can be neglected in comparison of substrate WC-6Co one. Thus, heat source flows easily in the tool through the tool/workpiece interfaces. On the other hand, when adhesion layer thickness becomes significant

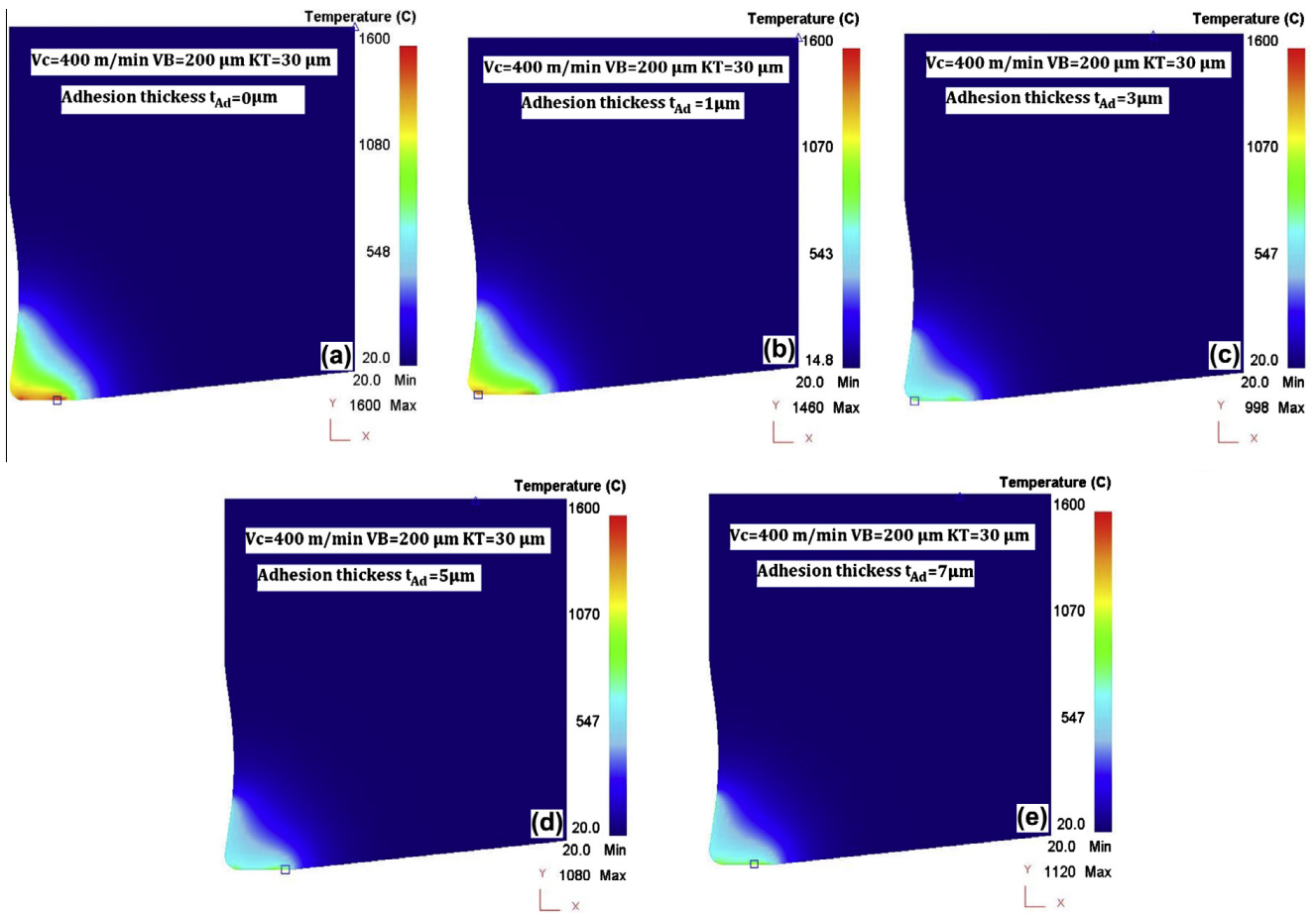


Fig. 11. Effect of different oxide adhesion layer thickness on cutting tool temperature distribution ( $V_c = 400$  m/min).

(3  $\mu\text{m}$  for example), it produces highly effect on heat transfer problem. In contrary for high adhesion layer thickness  $t_{Ad} > 3 - \mu\text{m}$  the average temperature of flank wear land increases slightly with the increase in adhesion layer thickness. This trend can be explained by the fact that, when  $t_{Ad} > 3 \mu\text{m}$ , conduction phenomenon in the adhesion layer is established as in bulk material. Globally, increase adhesion layer thickness promotes in increasing the maximum chip temperature and the average machined surface temperature. This result is in agreement with Grzesik [33] results who reports that coating layer improves the heat flow into the chip and workpiece. However, one can notice for  $t_{Ad} = 1 \mu\text{m}$ , the average machined surface temperature takes the lowest value. The same trend is observed for chip thickness, but this time chip thickness takes the highest value for  $t_{Ad} = 1 \mu\text{m}$ . In definitely for all observation for  $t_{Ad} = 1 \mu\text{m}$ , one can suggest that the heat transfer phenomenon in very thin adhesion layer is not full understanding and totally controlled.

The inner and outer chip curvature radiuses also decrease with increasing the adhesion layer thickness. That is reasonable related with the increasing of the chip temperature. The chip morphology evolution is clearly depicted in Fig. 12. The result suggests that increase adhesion layer thickness produces more curved chip which can evolve towards the aperiodic or periodic saw tooth chip or the segmentation chip.

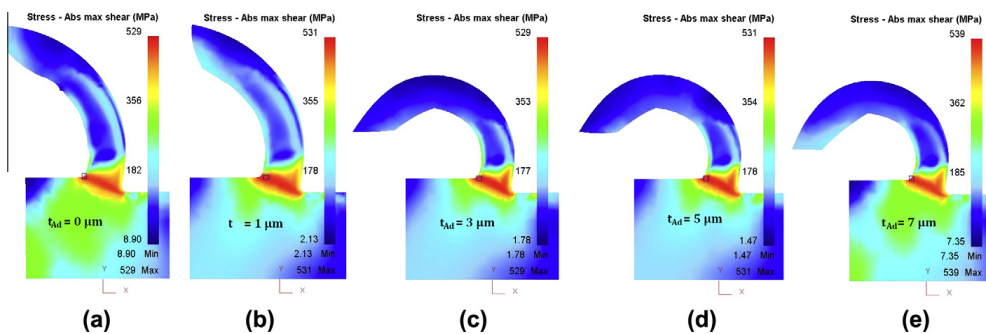


Fig. 12. Effect of oxide adhesion layer on chip formation ( $V_c = 400$  m/min,  $V_B = 200 \mu\text{m}$  and  $K_T = 30 \mu\text{m}$ ).

## 5. Conclusion

FEA are performed in this work to investigate tool wear geometry without and with adhesion layer effects on cutting process variables. Thus, the following conclusions can be drawn from this work:

- The simulated cutting and feed forces show good agreement with the measured data [4], which validates this study.
- Cutting and feed forces decrease with increasing KT. Whereas increasing VB involves an increase of cutting and feed forces. Hence, for cutting tool with a rake angle equal zero, little crater tool wear can be considered as a benefit effect on cutting forces.
- This investigation highlights that the increase of Vc and KT causes the increase in the average cutting tool and workpiece surface temperatures whose have negative effect on machined surface quality.
- Only duals  $V_c \times V_B$  and  $V_B \times K_T$  have significant interaction effects on cutting forces and the average cutting tool and workpiece surface temperatures.
- The effect of adhesion layer on cutting process variables is highly depicted. Thus, adhesion layer promotes the increase of the workpiece surface temperature whereas decreasing tool flank wear land temperature.
- It is also observed that the adhesion layer promotes more curved chips which can evolve towards the aperiodic or periodic saw tooth chip or the segmentation chip.

## Acknowledgments

The authors wish to thank ACTARUS S.A.S. and CIRTES for their help in carrying out part of experiments. They would also thank technicians of ICA-Albi and of GIP-InSIC for their helpful contributions.

## References

- [1] A. Munoz-Sanchez, J.A. Canteli, J.L. Cantero, M.H. Miguelez, Numerical analysis of the tool wear effect in the machining induced residual stresses, *Simul. Model. Pract. Theory* 19 (2011) 872–886.
- [2] M. Mohammadpour, M.R. Razfar, R. Jalili Saffar, Numerical investigating the effect of machining parameters on residual stresses in orthogonal cutting, *Simul. Model. Pract. Theory* 18 (2010) 378–389.
- [3] Y. Matsumoto, F. Hashimoto, G. Lahoti, Surface integrity generated by precision hard cutting, *CIRP Ann. Manuf. Technol.* 48 (1) (1999) 59–62.
- [4] S. Han, Mechanisms and Modelling of White Layer Formation in Orthogonal Machining of Steels, Phd Thesis of Georgia Institute of Technology, 2006, pp. 46.
- [5] S. Han, S.N. Melkote, M.S. Haluska, T.R. Watkins, White layer formation due to phase transformation in orthogonal machining of AISI 1045 annealed steel, *Mater. Sci. Eng., A* 488 (2008) 195–204.
- [6] M. Remadna, J.F. Rigal, Experimental study of the wear of cubic boron nitride (CBN) cutting tools, in: *Optimum Technologic Systems and Materials in the Machines Building Field—TSTM 5*, Romanian Academy, Romania, 1999, pp. 154–161.
- [7] W. Grzesik, T. Wanat, Comparative assessment of surface roughness produced by hard machining with mixed ceramic tools including 2D and 3D analysis, *J. Mater. Process. Technol.* 169 (2005) 364–371.
- [8] W. Grzesik, Influence of tool wear on surface roughness in hard turning using differently shaped ceramic tools, *Wear* 265 (2008) 327–335.
- [9] Y.-C. Yen, J. Söhner, B. Lilly, T. Altan, Estimation of tool wear in orthogonal cutting using the finite element analysis, *J. Mater. Process. Technol.* 146 (1) (2004) 82–91.
- [10] G. List, G. Sutter, A. Bouthiche, Cutting temperature prediction in high speed machining by numerical modelling of chip formation and its dependence with crater wear, *Int. J. Mach. Tools Manuf.* 54–55 (2012) 1–9.
- [11] L.-J. Xie, J. Schmidt, C. Schmidt, F. Biesinger, 2D FEM estimate of tool wear in turning operation, *Wear* 258 (2005) 1479–1490.
- [12] Y.-C. Yen, J. Söhner, B. Lilly, A. Taylan, Estimation of tool wear in orthogonal cutting using the finite element analysis, *J. Mater. Process. Technol.* 146 (2004) 82–91.
- [13] K. Li, X.-L. Gao, J.W. Stutherland, Finite element simulation of the orthogonal metal cutting process for qualitative understanding of the effects of crater wear on the chip formation process, *J. Mater. Process. Technol.* 127 (2002) 309–324.
- [14] L. Chen, T.I. El-Wardany, W.C. Harris, Modelling the effects of flank wear land and chip formation on residual stresses, *CIRP Ann. Manuf. Technol.* 53 (1) (2004) 95–98.
- [15] K.-M. Li, S.Y. Liang, Modeling of cutting forces in near dry machining under tool wear effect, *Int. J. Mach. Tools Manuf.* 47 (2007) 1292–1301.
- [16] T. Kagnaya, Contribution à l'identification des mécanismes d'usure d'un WC–6% Co en usinage et par une approche tribologique et thermique, Phd thesis of Institut Mines-Telecom ParisTech, 2009.
- [17] X.D. Frang, D. Zhang, An investigation of adhering layer formation during tool wear progression in turning of free-cutting stainless steel, *Wear* 197 (1996) 169–178.
- [18] H.O. Gekonde, S.V. Subramanian, Tribology of tool–chip interface and tool wear mechanisms, *Surf. Coat. Technol.* 149 (2002) 151–160.
- [19] K. Kudou, T. Obon, S. Okada, Crater wear characteristics of an Fe-diffused carbide cutting tool, *J. Mater. Process. Technol.* 132 (2003) 255–261.
- [20] T. Kagnaya, C. Boher, L. Lambert, M. Lazard, T. Cutard, Mécanisme d'endommagement tribologique du WC–Co en usinage, in: J.-F. Rouchon, C. Boher (Eds.), *Actes des journées internationales francophones de tribologie (JIFT 2010) Albi, France, 2010*, pp. 355–360.
- [21] A. Jiju, *Design of Experiments for Engineers and Scientists*, Butterworth-Heinemann, (2003) pp. 60–64.
- [22] S.P.F.C. Jaspers, J.H. Dautzenberg, Material behavior in conditions similar to metal cutting: flow stress in the primary shear zone, *J. Mater. Process. Technol.* 122 (2002) 322–333.
- [23] <[www.matweb.com](http://www.matweb.com)>, MatWeb™ Materials Database, 2013.
- [24] R.C. Weast (Editor-in-Chief), *CRC Handbook of Chemistry and Physics* 64th ed., CRC Press Inc., Boca Raton, FL, 1984.
- [25] COMSOL Multiphysics 4.1, COMSOL Material Library user's Guide Copyright 1998–2010 COMSOL LAB.
- [26] D. Chicot, J. Mendoza, A. Zaoui, G. Louis, V. Lepage, F. Roudet, J. Lesage, Mechanical properties of magnetite ( $Fe_3O_4$ ), hematite ( $\alpha-Fe_2O_3$ ) and goethite ( $\gamma-FeO.OH$ ) by instrumented indentation and molecular dynamics analysis, *Mater. Chem. Phys.* 129 (2011) 862–870.
- [27] *ASM handbook, Metals-Handbook: Physical Properties of Carbon and Low-Alloy Steels*, Ohio, USA, 1992.
- [28] D. Umbrello, L. Filice, S. Rizzuti, F. Micari, On the evaluation of the global heat transfer coefficient in cutting, *Int. J. Mach. Tools Manuf.* 47 (2007) 1738–1743.

- [29] B. Haddag, T. Kagnaya, M. Nouari, T. Cutard, A new heat transfer analysis in machining based on two steps of 3D finite element modelling and experimental validation, *Heat Mass Transfer* 49 (1) (2013) 129–145.
- [30] J.A. Arsecularatne, R.F. Fowle, P. Mathew, P.L.B. Oxley, Prediction of tool life in oblique machining with nose radius tools, *Wear* 198 (1996) 22–228.
- [31] G. Caprino, L. Santo, L. Nele, Interpretation of size effect in orthogonal machining of composite materials. Part I: unidirectional glass-fibre-reinforced plastics, *Composites Part A* 29A (1998) 887–892.
- [32] S.S. Joshi, N. Ramakrishnan, P. Ramakrishnan, Analysis of chip breaking during orthogonal machining of Al/SiCp composites, *J. Mater. Process. Technol.* 88 (1999) 90–96.
- [33] W. Grzesik, Determination of temperature distribution in the cutting zone using hybrid analytical-FEM technique, *Int. J. Mach. Tools Manuf.* 46 (2006) 651–658.