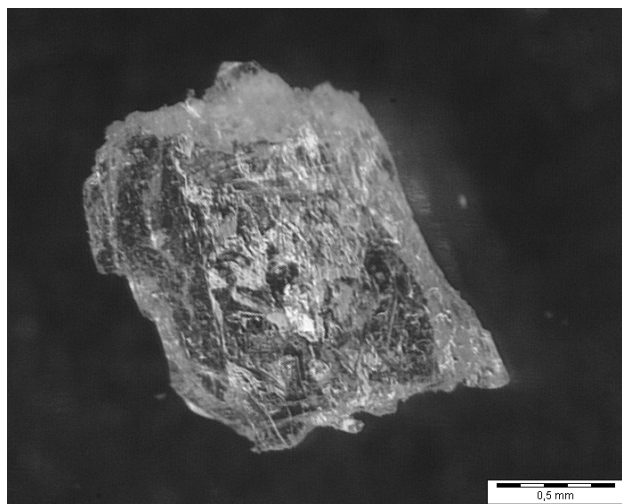


## Supporting information.



**Figure S1.** Picture of a crystal of  $\text{Na}_3[\text{B}_3\text{O}_4(\text{OH})_4]$  by optical microscopy x 40, (crystal size  $\sim 1 \times 1 \text{ mm}^2$ ).

**Table S1.** Listing of compounds cited in this paper and their associated crystallographic structure.

Structural formula	Equivalent formula
$\text{Na}[\text{B}(\text{OH})_4] \cdot 2\text{H}_2\text{O}$	$\text{NaBO}_2 \cdot 4\text{H}_2\text{O}$
$\text{Na}[\text{B}(\text{OH})_4]$	$\text{NaBO}_2 \cdot 2\text{H}_2\text{O}$
$\text{Na}_3[\text{B}_3\text{O}_4(\text{OH})_4]$	$\text{NaBO}_2 \cdot 2/3\text{H}_2\text{O}$
$\text{Na}_3[\text{B}_3\text{O}_5(\text{OH})_2]$	$\text{NaBO}_2 \cdot 1/3\text{H}_2\text{O}$
$\text{Na}_3[\text{B}_3\text{O}_6]$	$\text{NaBO}_2$
$\text{NaBH}_4$	-
$\text{Na}_2\text{B}_4\text{O}_7 \cdot 10\text{H}_2\text{O}$	-

**Table S2.** Positional parameters (esd) and their isotropic or equivalent isotropic displacement parameters ( $\text{\AA}^2$ ).

Atoms	Positions ( $\text{\AA}$ )			$U_{\text{iso}}^*/U_{\text{equi}}$
	X	Y	Z	
Na1	0.5781(1)	0.40567(9)	0.5455(2)	0.0142
Na2	0.8298(1)	1.09069(9)	0.6514(2)	0.0142

Na3	0.4855(1)	-0.01662(10)	0.6218(2)	0.0156
B1	0.6852(2)	0.7820(2)	0.7535(3)	0.0089
B2	0.7740(2)	0.5115(2)	0.3092(3)	0.0098
B3	0.8840(2)	0.2387(2)	0.3087(3)	0.0092
O1	0.9231(1)	0.2133(2)	0.1199(2)	0.0120
O2	0.6058(1)	0.8529(2)	0.8678(2)	0.0110
O3	0.9634(1)	0.1672(2)	0.4626(2)	0.0132
O4	0.6494(1)	0.8317(2)	0.5470(2)	0.0111
O5	0.7875(1)	0.8535(2)	0.8238(2)	0.0095
O6	0.6830(1)	0.5897(1)	0.7708(2)	0.0101
O7	0.8716(1)	0.4285(2)	0.3392(2)	0.0101
O8	0.7681(1)	0.6845(2)	0.3154(2)	0.0130
H1	0.8806	0.2447	0.0305	0.0235*
H2	0.6279	0.9404	0.9135	0.0220*
H3	1.0155	0.2098	0.4736	0.0178*
H4	0.6808	0.7818	0.4730	0.0197*

---