



HAL
open science

Deformable image registration applied to lung SBRT: Usefulness and limitations

David Sarrut, Thomas Baudier, Myriam Ayadi, Ronan Tanguy, Simon Rit

► To cite this version:

David Sarrut, Thomas Baudier, Myriam Ayadi, Ronan Tanguy, Simon Rit. Deformable image registration applied to lung SBRT: Usefulness and limitations. *Physica Medica European Journal of Medical Physics*, 2017, 44, pp.108-112. 10.1016/j.ejmp.2017.09.121 . hal-01611252

HAL Id: hal-01611252

<https://hal.science/hal-01611252>

Submitted on 9 Apr 2019

HAL is a multi-disciplinary open access archive for the deposit and dissemination of scientific research documents, whether they are published or not. The documents may come from teaching and research institutions in France or abroad, or from public or private research centers.

L'archive ouverte pluridisciplinaire **HAL**, est destinée au dépôt et à la diffusion de documents scientifiques de niveau recherche, publiés ou non, émanant des établissements d'enseignement et de recherche français ou étrangers, des laboratoires publics ou privés.

Deformable image registration applied to lung SBRT: usefulness and limitations

David Sarrut^{1,2}, Thomas Baudier^{1,2}, Myriam Ayadi², Ronan Tanguy², Simon Rit¹

¹ *Univ Lyon, INSA-Lyon, Université Lyon 1, CNRS, Inserm, Centre Léon Brard, CREATIS UMR 5220, U1206, F-69373, LYON, France*

² *Univ Lyon, Centre Léon Bérard, F-69373, LYON, France*

Abstract

Radiation therapy (RT) of the lung requires deformation analysis. Deformable Image Registration (DIR) is the fundamental method to quantify deformations for various applications: motion compensation, contour propagation, dose accumulation, etc. DIR is therefore unavoidable in lung RT. DIR algorithms have been studied for decades and are now available both within commercial and academic packages. However, they are complex and have limitations that every user must be aware of before clinical implementation. In this paper, the main applications of DIR for lung RT with their associated uncertainties and their limitations are reviewed.

1. Introduction

Deformable image registration (DIR) has been studied for more than 20 years and it has a long history with research in radiation therapy (RT). Indeed, the clinical interest is large with numerous applications: motion compensation, auto-contouring, dose accumulation etc. Since the early years of DIR, important progresses have been made: algorithms are faster, more precise and more accessible than ever. However, several challenges and limitations remain such as validation, tissue appearance/disappearance and robustness. This review focuses on applications of DIR in lung cancer and CT images, but DIR can be used in many other sites (head and neck, prostate etc) and with other image

modalities (MRI, PET, SPECT, US), every situation having specific challenges. General practical recommendations in RT may be found in the recent AAPM TG report [1].

DIR in a nutshell. First, the main concepts at the core of most DIR algorithms are briefly summarized below. For more details, several excellent reviews are available which cover in depth biomedical image registration methods [2, 3]. DIR is an ill-posed problem formalized as the optimization of a function balancing the similarity between images and the plausibility of the deformation. This tradeoff is at the heart of all DIR algorithms. The three main components are 1) the measurement of image similarity, 2) the parameterization of the deformation and 3) the optimization method. Image similarity can be estimated via numerous approaches, e.g. the popular Mutual Information metric, or metric mixing voxel-based and geometrical extracted features. Deformation vector fields (DVF) may be directly estimated or they may be parameterized with fewer unknowns, e.g. using the popular B-spline basis functions. The cost function is composed of an image similarity term and a transformation plausibility term. It may be optimized via gradient-based continuous methods or discrete approaches (graph-based). This is a very active field of research - around 150 publications per year in PubMed in the last few years - applied to a wide range of applications. In RT, usage of DIR has significantly progressed [3], particularly for thorax images. However, ten years after our review optimistically presenting the potential of DIR in IGRT [4], it can be observed that clinical use of DIR is “like sex for teenagers: everyone talks about it, nobody really knows how to do it, everyone thinks everyone else is doing it, so everyone claims they are doing it too¹”.

Evaluation. Like other key components, such as the dose computation engine in a TPS, it is necessary to evaluate DIR. However, a ground truth is generally not available. Indeed, the accuracy is often measured via anatomical landmarks, e.g.

¹The authors could not retrieve the original author of this quote heard at a conference, but it mainly refers to “big data” in Internet references.

bifurcation of airways, using Target Registration Error (TRE) criteria averaging the distances between landmarks. Additionally, other anatomical structures, e.g. lines corresponding to vessels or organ contours can be used. Several open databases of thoracic images with their corresponding evaluation data are available (see table 1) and they have proved to be very useful as demonstrated by their high number of citations. For example, the EMPIRE10² challenge [5] compared more than 40 algorithms with a database of 30 pairs of thoracic CT images: the first 10 methods depicted TRE lower than 0.9 mm. Instead of relying on manually defined landmarks or segmented delineated structures, other authors have proposed to automatically estimate local DIR uncertainty [6, 7, 8]. More detailed analysis on DIR evaluation may be found in [9, 10].

2. Applications of DIR in lung RT

This article splits the applications of DIR in lung SBRT in four parts: contouring, dose accumulation, 4D image analysis and other applications (Figure 1). Most of the bibliographic references are listed in tables in the supplementary materials (most of the bibliography is arbitrarily limited to the last 5 years). Note that the computational time of the methods was not studied here.

2.1. DIR for contouring

It seems that DIR was first used in lung RT to perform automatic segmentation or auto-contouring. The principle is to use DIR between an already contoured reference image and an image to be contoured. Once the DVF is obtained, it is used to propagate the contours from one image to the other. The algorithms that perform auto-contouring may be separated into three groups: 1) methods to propagate contours between respiratory phases (intra session, 4D CT), 2) methods for inter-session contouring, 3) initial contouring, mostly with inter-patient atlas approaches. Table 2 lists some bibliographic references.

²Evaluation of Methods for Pulmonary Image Registration 2010, <http://empire10.isi.uu.nl/>

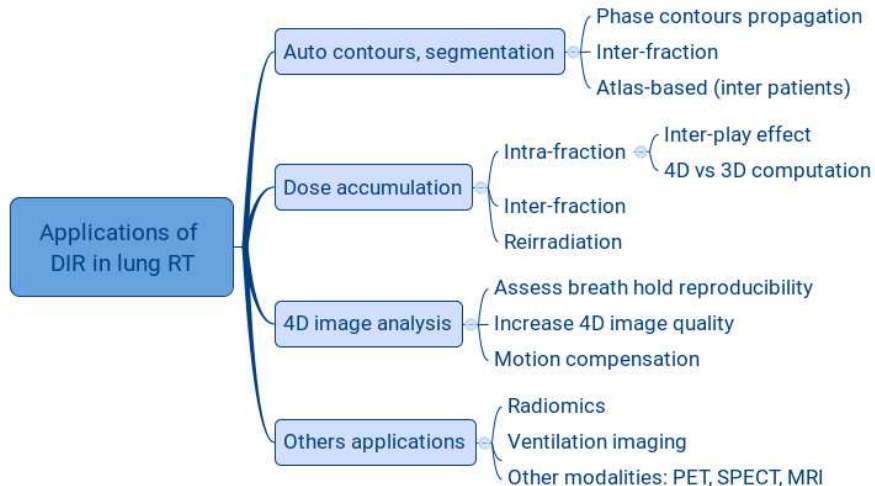


Figure 1: Simplified classification of DIR applications in lung RT.

Phase-to-phase auto-contouring propagates lung, tumor or lymph node contours from one phase to the other breathing phases of a 4D CT image. A specific uncertainty lies in the “sliding issue”. Indeed, the lung and the liver slide on the opposite side of the pleura and the wall, generating discontinuities in the motion field. However, DIR generally relies on the assumption that the sought transformation is smooth, preventing correct estimation of those discontinuities. If not specifically taken into account, the deformation near sliding areas will be underestimated in the lungs and overestimated along the pleura, e.g. in the thoracic wall. Several proposals have been made mostly based on separated DIR regularizations according to segmented regions that are supposed to slide along each other. Regions may be as simple as lungs segmentation or more refined as the so-called *motion-mask* following intra and extra pleural regions [11]. It is not clear, however, if commercial solutions provide sliding correction yet (it is mentioned as future work in [12]). It is relatively easy to detect if sliding is taken into account by looking at specific sliding regions, around lungs boundaries near the diaphragm and the liver. Apart from sliding, another limitation also is image 4D CT artifacts that may prevent reliable contouring (see section 2.3).

Several studies have evaluated the accuracy and usefulness of 4D CT contour propagation with very good results in terms of accuracy, contour reproducibility and delineation time [13]. Expected precision is generally better than 2 mm, in particular for the alignment of lungs boundaries, e.g. in the EMPIRE10 challenge [5] the majority of algorithms were very well adapted.

Propagating contours made on the planning CT onto images acquired during other treatment sessions (CT or CBCT) is also a classical use of DIR in the progression towards adaptive treatment planning. However, DIR contour propagation for inter-fraction delineation is particularly difficult in the lungs because the breathing motion is combined to inter-fraction motion. Moreover, tissue changes such as atelectasis or emphysema in the course of the treatment may introduce wrong results. Near multimodal registration between CT and CBCT requires specific attention as the image intensity ranges are different and CBCT contains more noise and potentially reconstruction artifacts such as streaks or cupping. Image intensities have to be pre-processed by some kind of histogram equalization before using mono-modal similarity measures (SSD), or multi-modal similarity measure should be used, e.g. the correlation coefficient or the Mutual Information.

Finally, initial contours on the planning CT may be performed automatically via atlas segmentation methods using DIR to deform the image to be segmented with an atlas containing one or several images with associated validated contours (and statistical properties). This approach has also been proposed for the segmentation of fine lung structures such as lobes or airways. However, only a few studies are dedicated to lung SBRT. DIR uncertainty should be compared to inter-observer uncertainty of contouring itself, which could be large, particularly for target volumes [14]. It should be emphasized that, like any automated algorithm, auto-contouring based on DIR will never lead to perfect results and will provide incorrect results in some situations (image artifacts, large atelectasis or emphysema, etc). Hence, results must be visually validated after each use and may require manual adjustment that may be time consuming. Future developments, such as better visualization and interaction tools, will probably

come from the industry.

2.2. DIR for dose accumulation

DIR is used to perform dose accumulation (DA) between dose distributions computed on different anatomical states. DA accumulates dose quantities once the dose distribution have been mapped from one image to the other. Two main situations can be considered separately: intra-fraction motion (breathing motion) and inter-fraction changes (session-to-session or re-irradiation).

2.2.1. Methods for dose mapping

Computing DA consists of warping with DIR then summing two dose distributions to the same reference coordinates system. Different mapping methods have been proposed because multiple source dose voxels (dosel) may merge into a single destination dosel, or conversely a source dosel may split into several destination dosels. Li et al.[15] summarized and compared the two main proposed methods: direct dose mapping (DDM) and energy/mass transfer (EMT) mapping. DDM interpolates dose values from one dose grid to the other, while EMT counts the total energy and mass transferred to each voxel by taking into account the dosel volume change (thanks to the Jacobian of the deformation), before computing the dose by dividing energy by mass. Mean differences between the two approaches appear small for 4D breathing dose accumulation but larger differences could appear near sharp dose gradient regions and could reach 11%. It is recommended to use EMT because it is based on a “more theoretically sound physics principle”, taking into account the repartition of energy based on volume changes rather than an interpolation.

2.2.2. Intra-fraction dose accumulation

In general, treatment planning systems only compute dose in static anatomies, even though the lungs move due to breathing. The impact of respiratory motion on the dose distribution has been studied with 4D dose computation: from a 4D CT composed of 8 to 10 phases, dose distributions are computed for every phase and accumulated thanks to DIR performed with each phase relative to a

reference phase. This process has been studied for various situations: 4D dose compared to average 3D CT, or compared to free breathing CT, or compared to average intensity projection (AIP), all those methods with different margin strategies (Table 3). For example, Ohira et al.[16] showed that AIP can predict the target 4D dose coverage with less than 3 % dose difference in target volumes and 1 Gy for Organs At Risk (OAR), but with large differences (up to 10 Gy) for large respiratory motion, e.g. near the liver. Valdes et al.[17] observed marginal differences between 3D and 4D dose calculations, lower than DIR uncertainty, and concluded that 4D dose calculations are not necessary for most cases treated with SBRT. However, for OAR, large motion or GTV with highly irregular shapes, 4D computation should be preferred.

For modulated beam delivery, the interplay effect, i.e. the concurrent motion of the patient and the irradiation system (multi-leaf collimator, MLC, and gantry), may potentially result in over- or under-dosage. Note that heart motion is generally not taken into account [18]. The evaluation of dosimetric impact has been performed by measurements with dynamic setups or with simulations involving DIR. Most studies converge towards clinically acceptable dose differences due to interplay effects (below 4%), with the differences increasing as motion increases (Table 3). As an example, Rao et al. [19] concluded that 3D dose computation provides clinically acceptable 4D dose approximations for both GTV and critical structures. Differences between 3D and 4D dose distributions seem to be patient dependent; no clear population trends were observed between dose differences and tumor extend [20]. Most of the studies investigate IMRT on a conventional linac (VMAT, RapidArc, DMLC), the specificity of other devices (e.g. Cyberknife, Tomotherapy) devices should be evaluated independently.

The consequences of irregular breathing cycles have been less studied. As an example, for delivery strategies based on tumor tracking with dynamic MLC, Yang et al [21] found that dose increases in the target and OARs when there is a difference of 10% between anticipated and actual breathing speeds. Finally, it should be emphasized that these studies concern photon beams only: ion beam

treatments, with proton or carbon, could lead to very different results, with large differences between 3D and 4D dose computation [22].

2.2.3. Inter-fraction dose accumulation

DIR is also used to perform DA in inter-fraction situations, typically for adaptive radiotherapy (ART) or for re-irradiation (Table 3). One first limitation comes from the tissue appearance or disappearance (TAD) that may occur between the two images to be registered. Examples include: tumor volume expansion [23], fibrosis, emphysema, atelectasis, and radiation-induced normal tissue changes [24]. Indeed, deformation models used in DIR algorithms do *not* explicitly take TAD into account: the underlying assumptions generally used to model the deformations between images may consider smoothness, continuity or diffeomorphism, which is not the case with TAD. The resulting displacement field in the vicinity of TAD is distorted, e.g. stretching or collapsing tissues, and provides unreliable DA. Even if some attempts have been proposed, such as in [25] for lung, in [26] for brain or in [27] to include excision, to our knowledge, it is still an open problem. Besides those limitations, DIR has however been shown to be almost always more accurate than rigid registration [28, 29]. Finally, it is also not clear what the consequences are of accumulating doses separated by several months but this is more of a radiobiology question than a DIR problem. Indeed, the radiobiological rationale for tissue repair when large delays occurred between irradiation is largely unknown.

2.2.4. Conclusion for dose accumulation

The reliability of DA has been and still is the subject of rich and interesting debates (Table 3). In summary, DIR is generally considered reliable for intra-fraction situations, provided that sliding motion is taken into account. Even if the impact of DIR uncertainties on the DA could be not significant [30], there is an interplay between DIR uncertainties and dose gradient that can result in large DA errors in areas of steep dose gradients [31]. For inter-fraction applications, even if DIR is considered more precise than simple rigid registration,

there are still inherent limitations due to TAD, and radiobiology uncertainties associated to distant time dose accumulation. It is recommended to identify situations of TAD both from images inspection and analysis of the DVF, looking for suspicious Jacobian extrema values and other metrics [6]. Note that this article focuses on photon beams, but similar studies have been proposed in hadrontherapy, both for proton and carbon ion beams (see last row of Table 3).

2.3. DIR for 4D image analysis

4D CT and CBCT images are invaluable sources of information when studying patient-specific breathing motion. As shown in table 4, they can be used to track target motion, both for principal tumors and lymph nodes, and to assess the reproducibility and uncertainty associated with breath-hold approaches. One principal limitation of 4D CT images is related to the potential presence of image artifacts, mostly caused by irregular breathing: 4D acquisitions rely on the assumption of constant breathing motion. Those artifacts lead to distorted or blurred structures [32] that may locally impact the accuracy of DIR results in the vicinity of the artifacts. It is thus recommended to identify areas that contain artifacts, potentially automatically [33, 6]. DIR has also been used to enhance the quality of CT images. For example, some artifacts may be reduced with repeated fast helical acquisitions combined with 4D motion modeling based on DIR [34]. Alternatively, 4D DIR may smooth-out some artifacts [35] thanks to temporal regularization. Image noise may be reduced by combining the phases of a 4D CT that have been deformed to the same reference state via DIR [36, 37], thus providing a *motion compensated* image. This, in particular, can be used to compute an image representing the time-averaged position of the patient, called the *mid-position* [38]. Similarly, 4D CT and associated motion models computed with DIR may be exploited during CBCT reconstruction to provide motion-compensated images and potentially improve the temporal resolution of 4D-CBCT. Image quality enhancement via DIR is limited by the initial image quality; it is unlikely that any method will improve images if the artifacts are too large. Moreover, those methods are inherently limited by the underly-

ing assumption of smooth deformation of which the artifacts are considered a violation.

2.4. DIR for other topics

DIR in lung RT may also be used for other purposes. For example, it has been suggested that DIR could be used to provide functional ventilation images (Computed Tomography Ventilation Imaging, CTVI) to visualize and quantify the spatial distribution of air-volume changes on a voxel-per-voxel basis [39]. Also, DIR could be used to find imaging biomarkers with radiomics approaches that correlate image features with tissue density changes observed after irradiation [24]. Also, the data mining of large sets of images to automatically detect sensitive regions [40] also requires DIR methods to first align images in a common reference frame. Finally, DIR is also employed in lung SBRT with other modalities than CT, in particular with MR, SPECT or PET images (table 5). The same limitations as described before occur.

3. Conclusion and recommendations

Radiation therapy of lung tumors requires the analysis of various deformations and DIR is the fundamental method of quantifying image deformation, so DIR is unavoidable in lung RT. However, it is still relatively complex, it has some limitations and, just like any dose computation algorithm, it should be commissioned and regularly evaluated.

Evaluation may be divided into two parts, “offline” (commissioning) and “online” (daily practice). First, the commissioning of a new software should be performed as an end-to-end test on a database of cases where a ground truth is available. Several metrics (TRE, regions overlap etc) can be used to evaluate the achievable accuracy of the proposed algorithm, helping to determine the best parameters. As most algorithms may require parameter adjustment to provide the best performances, it is recommended to use algorithms that allow for altering those parameters. Different commissioning should be performed for

every type of localization and use-case. Second, in daily clinical use of DIR, for which no reference is available in a reasonable time, every patient-specific results should be reviewed via a pre-determined set of visual criteria. Criteria include: potential TAD and image artifacts, comparison between reference image and deformed image with color-overlaid images, special care around sliding regions, etc. As a practical example, mid-position lung treatment planning was setup in our institution with the following procedure. First, the chosen DIR algorithm [41, 11] used to compute the mid-position image was commissioned on open databases [42, 43] considering TRE criteria. Then, for every patient included in the study, DIR result is validated by the clinical team by a visual protocol that includes 1) evaluation of 4D CT image artifacts, 2) 4D movie of all breathing phases warped to the reference phase (results should ideally be almost identical with very few density modification), 3) color overlay of mid-position image over the 4D CT, 4) visual inspection of mid-position image alone. At the end of the process, image is validated and the treatment may continue. If a problem is detected, a backup plan not using DIR is used.

Recently, the AAPM report of the TG-132 [1] gathered extensive and comprehensive information on the general use of DIR in radiation therapy. We refer to this publication for practical advices and procedures. Table 6 recapitulates the main limitations or points of attention. It should be emphasized that DIR is not an end but an intermediate step in a process for a given objective that may have additional issues as well. For example, besides DIR difficulties, dose accumulation for re-irradiation raises the challenges of the accumulation of radiobiological effects.

With decades of development, DIR appears to be sufficiently advanced and evaluated to be used in clinical environments provided that users are properly trained, aware of underlying assumptions and limitations of the algorithms, and software commissioning is properly performed based on the knowledge of these limitations. DIR algorithms are now widely available, with both commercial software and academic packages (Table 7). We again refer to TG-132 [1] for a list of vendor recommendations that may also be useful to help the choice of a

particular software. As most algorithms may require parameter adjustment to provide the best performances, it is recommended to use algorithms that allow for changing those parameters during commissioning. The field is still evolving and future trends include increased speed, better user interaction and validation, and increased robustness. We also envisioned progresses in the automated detection of regions of potential issues, e.g. TAD in particular, and, with the advance of large databases of cases, progresses in automated contouring reliability. From a theoretical point of view, efforts should be directed towards deformations and similarity measures able to deal with TAD and robustness to noise and artifacts. Additionally, generic lung motion models and lung function analysis will bring new insights. The near future of MR-linac devices is also opening new usages and concerns about DIR in lung RT.

Acknowledgments

This work was partly supported by the SIRIC LYric Grant INCa-DGOS-4664 and the LABEX PRIMES (ANR-11-LABX-0063/ ANR-11-IDEX-0007). The authors want also to thanks RB for helpful proofreading.

Tables in supplementary materials

Table 1: Bibliographic references for the validation of DIR in lung. [See supplementary material]

Table 2: Bibliographic references for auto contouring based on DIR. [See supplementary material]

Table 3: Bibliographic references for dose accumulation in lung RT. [See supplementary material]

Table 4: Bibliographic references for 4D image analysis. [See supplementary material]

Table 5: Bibliographic references for use of DIR in radiomics or with other modalities than CT. [See supplementary material]

General	Need QA (end-to-end test) Warning to setup material (masks, bolus)
Intra-fraction (4D CT)	Sliding tissues (solutions exist) Inaccurate estimation close to 4D artefacts Effects of irregular breathing cycles Effects of heart motion
Inter-fraction	Current algorithms cannot deal with tissue (dis)appearance Uncertainties in homogeneous intensity region Uncertainties of physical dose accumulation
Inter-patient (contours, atlas)	The deformation type is barely constrained Can require manual contours cleaning Not applicable yet for target volumes
Re-irradiation	Current algorithms cannot deal with tissue (dis)appearance Unknown biological dose accumulation

Table 6: Main limitations of DIR applications

Table 7: Some software for DIR. [See supplementary material]

References

- [1] K. K. Brock, S. Mutic, T. R. McNutt, H. Li, M. L. Kessler, Use of image registration and fusion algorithms and techniques in radiotherapy: Report of the aapm radiation therapy committee task group no. 132., *Medical physics* (2017).
- [2] A. Sotiras, C. Davatzikos, N. Paragios, Deformable medical image registration: a survey., *IEEE Trans Med Imaging* 32 (2013) 1153–1190.
- [3] M. A. Viergever, J. A. Maintz, S. Klein, K. Murphy, M. Staring, J. P. Pluim, A survey of medical image registration ? under review, *Medical Image Analysis* (2016).
- [4] D. Sarrut, Deformable registration for image-guided radiation therapy., *Zeitschrift für medizinische Physik* 16 (2006) 285–97.
- [5] K. Murphy, B. van Ginneken, J. M. Reinhardt, S. Kabus, K. Ding, X. Deng, K. Cao, K. Du, G. E. Christensen, V. Garcia, T. Vercauteren, N. Ayache, O. Commowick, G. Malandain, B. Glocker, N. Paragios, N. Navab, V. Gorbunova, J. Sporring, M. de Bruijne, X. Han, M. P. Heinrich, J. A. Schnabel, M. Jenkinson, C. Lorenz, M. Modat, J. R. McClelland, S. Ourselin, S. E. A. Muenzing, M. A. Viergever, D. De Nigris, D. L. Collins, T. Arbel, M. Peroni, R. Li, G. C. Sharp, A. Schmidt-Richberg, J. Ehrhardt, R. Werner, D. Smeets, D. Loeckx, G. Song, N. Tustison, B. Avants, J. C. Gee, M. Staring, S. Klein, B. C. Stoel, M. Urschler, M. Werlberger, J. Vandemeulebroucke, S. Rit, D. Sarrut, J. P. W. Pluim, Evaluation of registration methods on thoracic ct: the empire10 challenge., *IEEE Trans Med Imaging* 30 (2011) 1901–1920.
- [6] Z. Saleh, M. Thor, A. P. Apte, G. Sharp, X. Tang, H. Veeraraghavan, L. Muren, J. Deasy, A multiple-image-based method to evaluate the performance of deformable image registration in the pelvis., *Physics in medicine and biology* 61 (2016) 6172–6180.

- [7] M. Hub, C. Karger, Estimation of the uncertainty of elastic image registration with the demons algorithm., *Phys Med Biol* 58 (2013) 3023–3036.
- [8] S. Li, C. Glide-Hurst, M. Lu, J. Kim, N. Wen, J. N. Adams, J. Gordon, I. J. Chetty, H. Zhong, Voxel-based statistical analysis of uncertainties associated with deformable image registration., *Phys Med Biol* 58 (2013) 6481–6494.
- [9] S. Kabus, T. Klinder, K. Murphy, R. Werner, S. D., Validation and Comparison of Approaches to Respiratory Motion Estimation, Springer Berlin Heidelberg, 2013, pp. 159–183. In Book "4D Motion Modeling: Estimation of Respiratory Motion for Radiation Therapy", Jan Ehrhardt, Cristian Lorenz editors.
- [10] T. Rohlfing, Image similarity and tissue overlaps as surrogates for image registration accuracy: widely used but unreliable., *IEEE Trans Med Imaging* 31 (2012) 153–163.
- [11] J. Vandemeulebroucke, O. Bernard, S. Rit, J. Kybic, P. Clarysse, D. Sarrut, Automated segmentation of a motion mask to preserve sliding motion in deformable registration of thoracic ct., *Med Phys* 39 (2012) 1006–1015.
- [12] O. Weistrand, S. Svensson, The anaconda algorithm for deformable image registration in radiotherapy., *Med Phys* 42 (2015) 40–53.
- [13] P. B. Johnson, K. R. Padgett, K. L. Chen, N. Dogan, Evaluation of the tool "reg refine" for user-guided deformable image registration., *J Appl Clin Med Phys* 17 (2016) 6025.
- [14] H. Peulen, J. Belderbos, M. Guckenberger, A. Hope, I. Grills, M. van Herk, J.-J. Sonke, Target delineation variability and corresponding margins of peripheral early stage nslc treated with stereotactic body radiotherapy., *Radiotherapy and oncology : journal of the European Society for Therapeutic Radiology and Oncology* 114 (2015) 361–366.

- [15] H. S. Li, H. Zhong, J. Kim, C. Glide-Hurst, M. Gulam, T. S. Nurushev, I. J. Chetty, Direct dose mapping versus energy/mass transfer mapping for 4d dose accumulation: fundamental differences and dosimetric consequences., *Phys Med Biol* 59 (2014) 173–188.
- [16] S. Ohira, Y. Ueda, M. Hashimoto, M. Miyazaki, M. Isono, H. Kamikaseda, A. Masaoka, M. Takashina, M. Koizumi, T. Teshima, Vmat-sbrt planning based on an average intensity projection for lung tumors located in close proximity to the diaphragm: a phantom and clinical validity study., *J Radiat Res* 57 (2016) 91–97.
- [17] G. Valdes, C. Robinson, P. Lee, D. Morel, D. Low, K. S. Iwamoto, J. M. Lamb, Tumor control probability and the utility of 4d vs 3d dose calculations for stereotactic body radiotherapy for lung cancer., *Med Dosim* 40 (2015) 64–69.
- [18] B. M. White, A. Santhanam, D. Thomas, Y. Min, J. M. Lamb, J. Neylon, S. Jani, S. Gaudio, S. Srinivasan, D. Ennis, et al., Modeling and incorporating cardiac-induced lung tissue motion in a breathing motion model, *Medical physics* 41 (2014).
- [19] M. Rao, J. Wu, D. Cao, T. Wong, V. Mehta, D. Shepard, J. Ye, Dosimetric impact of breathing motion in lung stereotactic body radiotherapy treatment using intensity modulated radiotherapy and volumetric modulated arc therapy [corrected]., *Int J Radiat Oncol Biol Phys* 83 (2012) e251–e256.
- [20] J. Matney, P. C. Park, J. Bluett, Y. P. Chen, W. Liu, L. E. Court, Z. Liao, H. Li, R. Mohan, Effects of respiratory motion on passively scattered proton therapy versus intensity modulated photon therapy for stage iii lung cancer: are proton plans more sensitive to breathing motion?, *Int J Radiat Oncol Biol Phys* 87 (2013) 576–582.
- [21] X. Yang, S. Han-Oh, M. Gui, Y. Niu, C. X. Yu, B. Y. Yi, Four-dimensional dose distributions of step-and-shoot imrt delivered with real-time tumor

tracking for patients with irregular breathing: constant dose rate vs dose rate regulation., *Medical physics* 39 (2012) 5557–5566.

- [22] M. Kumagai, S. Mori, N. Yamamoto, Impact of treatment planning with deformable image registration on dose distribution for carbon-ion beam lung treatment using a fixed irradiation port and rotating couch., *Br J Radiol* 88 (2015) 20140734.
- [23] K. Tatekawa, H. Iwata, T. Kawaguchi, S. Ishikura, F. Baba, S. Otsuka, A. Miyakawa, M. Iwana, Y. Shibamoto, Changes in volume of stage i non-small-cell lung cancer during stereotactic body radiotherapy., *Radiat Oncol* 9 (2014) 8.
- [24] A. R. Cunliffe, B. White, J. Justusson, C. Straus, R. Malik, H. A. Al-Hallaq, S. G. Armato, 3rd, Comparison of two deformable registration algorithms in the presence of radiologic change between serial lung ct scans., *J Digit Imaging* 28 (2015) 755–760.
- [25] S. Rit, H. Kuijff, S. van Kranen, M. van Herk, J.-J. Sonke, Computer assisted analysis of lung tumor regression during radiotherapy, in: *International conference on the use of computers in radiation therapy*, 2010.
- [26] P. Risholm, E. Samset, I.-F. Talos, W. Wells, A non-rigid registration framework that accommodates resection and retraction., *Information processing in medical imaging : proceedings of the ... conference* 21 (2009) 447–458.
- [27] S. Nithianathan, S. Schafer, D. J. Mirota, J. W. Stayman, W. Zbijewski, D. D. Reh, G. L. Gallia, J. H. Siewerdsen, Extra-dimensional demons: a method for incorporating missing tissue in deformable image registration., *Med Phys* 39 (2012) 5718–5731.
- [28] S. Senthil, G. H. M. J. Griffioen, J. R. van Sörnsen de Koste, B. J. Slotman, S. Senan, Comparing rigid and deformable dose registration for high dose thoracic re-irradiation., *Radiother Oncol* 106 (2013) 323–326.

- [29] T. R. Meijneke, S. F. Petit, D. Wentzler, M. Hoogeman, J. J. Nuyttens, Reirradiation and stereotactic radiotherapy for tumors in the lung: dose summation and toxicity., *Radiother Oncol* 107 (2013) 423–427.
- [30] N. Hardcastle, E. T. Bender, W. A. Tomé, The effect on dose accumulation accuracy of inverse-consistency and transitivity error reduced deformation maps., *Australas Phys Eng Sci Med* 37 (2014) 321–326.
- [31] N. K. Saleh-Sayah, E. Weiss, F. J. Salguero, J. V. Siebers, A distance to dose difference tool for estimating the required spatial accuracy of a displacement vector field., *Medical physics* 38 (2011) 2318–2323.
- [32] G. T. Y. Chen, J. H. Kung, K. P. Beaudette, Artifacts in computed tomography scanning of moving objects., *Seminars in radiation oncology* 14 (2004) 19–26.
- [33] D. Han, J. Bayouth, S. Bhatia, M. Sonka, X. Wu, Characterization and identification of spatial artifacts during 4d-ct imaging., *Medical physics* 38 (2011) 2074–2087.
- [34] D. A. Low, B. M. White, P. P. Lee, D. H. Thomas, S. Gaudio, S. S. Jani, X. Wu, J. M. Lamb, A novel ct acquisition and analysis technique for breathing motion modeling., *Phys Med Biol* 58 (2013) L31–L36.
- [35] J. Vandemeulebroucke, S. Rit, J. Kybic, P. Clarysse, D. Sarrut, Spatiotemporal motion estimation for respiratory-correlated imaging of the lungs., *Med Phys* 38 (2011) 166–178.
- [36] J. W. H. Wolthaus, C. Schneider, J.-J. Sonke, H, Mid-ventilation ct scan construction from four-dimensional respiration-correlated ct scans for radiotherapy planning of lung cancer patients, *International Journal of Radiation Oncology, Biology, Physics* 65 (2006) 1560–1571.
- [37] M. F. Kruis, J. B. van de Kamer, J. S. A. Belderbos, J.-J. Sonke, M. van Herk, 4d ct amplitude binning for the generation of a time-averaged 3d mid-position ct scan., *Phys Med Biol* 59 (2014) 5517–5529.

- [38] J. W. H. Wolthaus, J.-J. Sonke, M. van Herk, E. M. F. Damen, Reconstruction of a time-averaged midposition ct scan for radiotherapy planning of lung cancer patients using deformable registration, *Medical Physics* 35 (2008) 3998.
- [39] T. Guerrero, K. Sanders, J. Noyola-Martinez, E. Castillo, Y. Zhang, R. Tapia, R. Guerra, Y. Borghero, R. Komaki, Quantification of regional ventilation from treatment planning ct., *International journal of radiation oncology, biology, physics* 62 (2005) 630–4.
- [40] A. McWilliam, C. Faivre-Finn, J. Kennedy, L. Kershaw, M. van Herk, Data mining identifies the base of the heart as a dose-sensitive region affecting survival in lung cancer patients, in: *I. J. of Radiation Oncology*Biography*Physics* (Ed.), Proceedings of the 58th Annual Meeting of the American Society for Radiation Oncology, volume 96 of 2, 2016, pp. S48–S49.
- [41] V. Delmon, S. Rit, R. Pinho, D. Sarrut, Registration of sliding objects using direction dependent b-splines decomposition., *Phys Med Biol* 58 (2013) 1303–1314.
- [42] J. Vandemeulebroucke, D. Sarrut, P. Clarysse, The popi-model, a point-validated pixel-based breathing thorax model, in: *XVth International Conference on the Use of Computers in Radiation Therapy (ICCR)*, Toronto, Canada, 2007, pp. 1–8.
- [43] R. Castillo, E. Castillo, R. Guerra, V. E. Johnson, T. McPhail, A. K. Garg, T. Guerrero, A framework for evaluation of deformable image registration spatial accuracy using large landmark point sets., *Phys Med Biol* 54 (2009) 1849–1870.

We arbitrarily limit most of the bibliography to last 5 years (2011 and after).

Ref	Comments
[1]	DIR evaluation review
[2]	Empire database
[3]	MIDRAS database
[4]	Dir-Lab database
[5]	Popi-model database
[6, 7, 8, 9, 10, 11]	Compare performances of DIR methods
[12, 13, 14, 15, 16, 17]	Evaluation assessments
[18, 19, 20, 21, 22]	Some deformable phantoms
[23, 24, 25, 26, 27]	Sliding issue

Table 1: Bibliographic references for the validation of DIR in lung

Ref	Comments
[28, 29, 30, 31, 32, 14, 33, 34, 35, 36]	Phase to phase contouring (Lung 4D)
[37, 36]	Fraction to fraction contouring
[38, 39, 40, 41, 42]	Atlas-based contouring
[43, 39, 40, 41, 44, 45, 30, 46, 42, 47, 48]	Fine lung structures (lobes, airways) segmentation

Table 2: Bibliographic references for auto contouring based on DIR

Ref	Comments
[49, 50, 51, 52, 53, 54, 55, 56, 57, 58, 59, 60, 61]	Dose accumulation methodology
[62, 53, 63, 64, 65, 66, 67, 68, 69, 70, 71, 72, 73, 74]	Intra-fraction accumulation
[75, 76, 77, 78, 70, 79, 80, 81, 82, 83, 84, 85, 86, 87, 83, 88, 89, 90]	Interplay effect
[66, 91, 92, 93, 94, 95, 96, 97, 98, 99, 100]	Inter-fraction accumulation
[101, 102, 103]	Re-irradiation
[104, 105, 106, 107, 103]	Reliability
[108, 109, 110, 99]	Impact of DIR uncertainty
[111]	Tissue disappearance and appearance
[105, 112, 7, 113, 114]	Phantom studies
[115, 116, 87, 117, 118, 119, 120, 121]	Hadrontherapy

Table 3: Bibliographic references for dose accumulation in lung RT

Ref	Comments
[122, 123, 124, 125, 126, 120]	Target tracking
[127, 128, 129, 130]	Breath-hold reproducibility
[131, 24, 132, 133, 134, 135, 136, 137, 138, 17]	Enhance 4D CT quality
[139, 140, 141, 142, 143, 144, 145, 146]	Enhance 4D CBCT quality
[147, 148, 149, 150]	Motion compensation
[151, 152, 153, 128, 154, 155, 156, 157, 158, 159, 160, 161]	Computed Tomography Ventilation Imaging

Table 4: Bibliographic references for 4D image analysis

Ref	Comments
[162, 163, 164, 165, 166]	Radiomics, data-mining
[167, 168, 169, 170]	MRI
[171, 172, 173, 174, 175, 176]	PET

Table 5: Bibliographic references for use of DIR in radiomics or with other modalities than CT.

Table 6: Main limitations of DIR applications. [See main text]

Software	Reference
ANT (Advanced Normalization Tools)	(web) [177]
NiftyReg	(web) [178]
Elastix	(web) [179]
MIRTK	(web)
ITK	(web)
Plastimach	(web) [180]
DIRART	(web) [181]
VV	(web) [182]
MEVIS	(commercial) (web)
Anaconda	(commercial) (web) [183]
SmartAdapt Varian	(commercial) (web) [184]
Mirada	(commercial) (web)
Dosisoft	(commercial) (web)

Table 7: Some software helpful for DIR

References

- [1] S. Kabus, T. Klinder, K. Murphy, R. Werner, S. D., Validation and Comparison of Approaches to Respiratory Motion Estimation, Springer Berlin Heidelberg, 2013, pp. 159–183. In Book "4D Motion Modeling: Estimation of Respiratory Motion for Radiation Therapy", Jan Ehrhardt, Cristian Lorenz editors.
- [2] K. Murphy, B. van Ginneken, J. M. Reinhardt, S. Kabus, K. Ding, X. Deng, K. Cao, K. Du, G. E. Christensen, V. Garcia, T. Vercauteren, N. Ayache, O. Commowick, G. Malandain, B. Glocker, N. Paragios, N. Navab, V. Gorbunova, J. Sporring, M. de Bruijne, X. Han, M. P. Heinrich, J. A. Schnabel, M. Jenkinson, C. Lorenz, M. Modat, J. R. McClelland, S. Ourselin, S. E. A. Muenzing, M. A. Viergever, D. De Nigris, D. L. Collins, T. Arbel, M. Peroni, R. Li, G. C. Sharp, A. Schmidt-Richberg, J. Ehrhardt, R. Werner, D. Smeets, D. Loeckx, G. Song, N. Tustison, B. Avants, J. C. Gee, M. Staring, S. Klein, B. C. Stoel, M. Urschler, M. Werlberger, J. Vandemeulebroucke, S. Rit, D. Sarrut, J. P. W. Pluim, Evaluation of registration methods on thoracic ct: the empire10 challenge., *IEEE Trans Med Imaging* 30 (2011) 1901–1920.
- [3] K. K. Brock, D. R. A. Consortium, et al., Results of a multi-institution deformable registration accuracy study (midras)., *Int J Radiat Oncol Biol Phys* 76 (2010) 583–596.
- [4] R. Castillo, E. Castillo, R. Guerra, V. E. Johnson, T. McPhail, A. K. Garg, T. Guerrero, A framework for evaluation of deformable image registration spatial accuracy using large landmark point sets., *Phys Med Biol* 54 (2009) 1849–1870.
- [5] J. Vandemeulebroucke, D. Sarrut, P. Clarysse, The popi-model, a point-validated pixel-based breathing thorax model, in: *XVth International Conference on the Use of Computers in Radiation Therapy (ICCR)*, Toronto, Canada, 2007, pp. 1–8.

- [6] K. Latifi, G. Zhang, M. Stawicki, W. van Elmpt, A. Dekker, K. Forster, Validation of three deformable image registration algorithms for the thorax., *J Appl Clin Med Phys* 14 (2013) 3834.
- [7] U. J. Yeo, J. R. Supple, M. L. Taylor, R. Smith, T. Kron, R. D. Franich, Performance of 12 dir algorithms in low-contrast regions for mass and density conserving deformation., *Med Phys* 40 (2013) 101701.
- [8] N. Kadoya, Y. Fujita, Y. Katsuta, S. Dobashi, K. Takeda, K. Kishi, M. Kubozono, R. Umezawa, T. Sugawara, H. Matsushita, K. Jingu, Evaluation of various deformable image registration algorithms for thoracic images., *J Radiat Res* 55 (2014) 175–182.
- [9] J. Yi, X. Yang, G. Chen, Y.-R. Li, Lung motion estimation using dynamic point shifting: An innovative model based on a robust point matching algorithm., *Med Phys* 42 (2015) 5616–5632.
- [10] M. Fatyga, N. Dogan, E. Weiss, W. C. Sleeman, 4th, B. Zhang, W. J. Lehman, J. F. Williamson, K. Wijesooriya, G. E. Christensen, A voxel-by-voxel comparison of deformable vector fields obtained by three deformable image registration algorithms applied to 4dct lung studies., *Front Oncol* 5 (2015) 17.
- [11] C. P. Lee, Z. Xu, R. P. Burke, R. B. Baucom, B. K. Poulouse, R. G. Abramson, B. A. Landman, Evaluation of five image registration tools for abdominal ct: Pitfalls and opportunities with soft anatomy., *Proc SPIE Int Soc Opt Eng* 9413 (2015).
- [12] D. Sarrut, B. Delhay, P.-F. Villard, V. Boldea, M. Beuve, P. Clarysse, A comparison framework for breathing motion estimation methods from 4-d imaging., *IEEE transactions on medical imaging* 26 (2007) 1636–48.
- [13] T. Rohlfing, Image similarity and tissue overlaps as surrogates for image registration accuracy: widely used but unreliable., *IEEE Trans Med Imaging* 31 (2012) 153–163.

- [14] S. Balik, E. Weiss, N. Jan, N. Roman, W. C. Sleeman, M. Fatyga, G. E. Christensen, C. Zhang, M. J. Murphy, J. Lu, P. Keall, J. F. Williamson, G. D. Hugo, Evaluation of 4-dimensional computed tomography to 4-dimensional cone-beam computed tomography deformable image registration for lung cancer adaptive radiation therapy., *Int J Radiat Oncol Biol Phys* 86 (2013) 372–379.
- [15] M. Hub, C. Karger, Estimation of the uncertainty of elastic image registration with the demons algorithm., *Phys Med Biol* 58 (2013) 3023–3036.
- [16] T. Vercauteren, W. De Gersem, L. A. M. Olteanu, I. Madani, F. Duprez, D. Berwouts, B. Speleers, W. De Neve, Deformation field validation and inversion applied to adaptive radiation therapy., *Phys Med Biol* 58 (2013) 5269–5286.
- [17] T. H. Dou, D. H. Thomas, D. P. O’Connell, J. M. Lamb, P. Lee, D. A. Low, A method for assessing ground-truth accuracy of the 5dct technique., *Int J Radiat Oncol Biol Phys* 93 (2015) 925–933.
- [18] R. Kashani, M. Hub, J. M. Balter, M. L. Kessler, L. Dong, L. Zhang, L. Xing, Y. Xie, D. Hawkes, J. A. Schnabel, J. McClelland, S. Joshi, Q. Chen, W. Lu, Objective assessment of deformable image registration in radiotherapy: a multi-institution study., *Med Phys* 35 (2008) 5944–5953.
- [19] N. Stanley, C. Glide-Hurst, J. Kim, J. Adams, S. Li, N. Wen, I. J. Chetty, H. Zhong, Using patient-specific phantoms to evaluate deformable image registration algorithms for adaptive radiation therapy., *J Appl Clin Med Phys* 14 (2013) 4363.
- [20] Y. Cheung, A. Sawant, An externally and internally deformable, programmable lung motion phantom., *Med Phys* 42 (2015) 2585–2593.
- [21] H. Kim, S. B. Park, J. I. Monroe, B. J. Traughber, Y. Zheng, S. S. Lo, M. Yao, D. Mansur, R. Ellis, M. Machtay, J. W. Sohn, Quantitative anal-

- ysis tools and digital phantoms for deformable image registration quality assurance., *Technol Cancer Res Treat* 14 (2015) 428–439.
- [22] F. Liu, Y. Hu, Q. Zhang, R. Kincaid, K. Goodman, G. Mageras, Evaluation of deformable image registration and a motion model in ct images with limited features, *Physics in medicine and biology* 57 (2012) 2539.
- [23] G. Wu, Q. Wang, J. Lian, D. Shen, Estimating the 4d respiratory lung motion by spatiotemporal registration and building super-resolution image., *Med Image Comput Comput Assist Interv* 14 (2011) 532–539.
- [24] J. Vandemeulebroucke, S. Rit, J. Kybic, P. Clarysse, D. Sarrut, Spatiotemporal motion estimation for respiratory-correlated imaging of the lungs., *Med Phys* 38 (2011) 166–178.
- [25] Y. Xie, M. Chao, G. Xiong, Deformable image registration of liver with consideration of lung sliding motion., *Med Phys* 38 (2011) 5351–5361.
- [26] G. Wu, Q. Wang, J. Lian, D. Shen, Estimating the 4d respiratory lung motion by spatiotemporal registration and super-resolution image reconstruction., *Med Phys* 40 (2013) 031710.
- [27] V. Delmon, S. Rit, R. Pinho, D. Sarrut, Registration of sliding objects using direction dependent b-splines decomposition., *Phys Med Biol* 58 (2013) 1303–1314.
- [28] S. Gaede, J. Olsthoorn, A. V. Louie, D. Palma, E. Yu, B. Yaremko, B. Ahmad, J. Chen, K. Bzdusek, G. Rodrigues, An evaluation of an automated 4d-ct contour propagation tool to define an internal gross tumour volume for lung cancer radiotherapy., *Radiother Oncol* 101 (2011) 322–328.
- [29] G. Bueno, O. Déniz, J. Salido, C. Carrascosa, J. Delgado, A geodesic deformable model for automatic segmentation of image sequences applied to radiation therapy., *Int J Comput Assist Radiol Surg* 6 (2011) 341–350.

- [30] Y. Yang, S. Zhou, P. Shang, E. Qi, S. Wu, Y. Xie, Contour propagation using feature-based deformable registration for lung cancer., *Biomed Res Int* 2013 (2013) 701514.
- [31] N. Hardcastle, W. van Elmpt, D. De Ruyscher, K. Bzdusek, W. A. Tomé, Accuracy of deformable image registration for contour propagation in adaptive lung radiotherapy., *Radiat Oncol* 8 (2013) 243.
- [32] M. Peroni, M. Spadea, M. Riboldi, S. Falcone, C. Vaccaro, G. Sharp, G. Baroni, Validation of automatic contour propagation for 4d treatment planning using multiple metrics., *Technol Cancer Res Treat* 12 (2013) 501–510.
- [33] M. Chao, Y. Yuan, R.-D. Sheu, K. Wang, K. E. Rosenzweig, Y.-C. Lo, A feasibility study of tumor motion estimate with regional deformable registration method for 4-dimensional radiation therapy of lung cancer., *Technol Cancer Res Treat* (2015).
- [34] J. N. Tehrani, Y. Yang, R. Werner, W. Lu, D. Low, X. Guo, J. Wang, Sensitivity of tumor motion simulation accuracy to lung biomechanical modeling approaches and parameters., *Phys Med Biol* 60 (2015) 8833–8849.
- [35] Y. Liu, R. Jin, M. Chen, E. Song, X. Xu, S. Zhang, C.-C. Hung, Contour propagation using non-uniform cubic b-splines for lung tumor delineation in 4d-ct., *Int J Comput Assist Radiol Surg* (2016).
- [36] P. B. Johnson, K. R. Padgett, K. L. Chen, N. Dogan, Evaluation of the tool "reg refine" for user-guided deformable image registration., *J Appl Clin Med Phys* 17 (2016) 6025.
- [37] Q. Wu, R. Cao, X. Pei, J. Jia, L. Hu, Deformable image registration of ct images for automatic contour propagation in radiation therapy., *Biomed Mater Eng* 26 Suppl 1 (2015) S1037–S1044.

- [38] S. M. Qatarnah, M. E. Noz, S. Hyödynmaa, G. Q. Maguire, Jr, E. L. Kramer, J. Crafoord, Evaluation of a segmentation procedure to delineate organs for use in construction of a radiation therapy planning atlas., *Int J Med Inform* 69 (2003) 39–55.
- [39] L. Zhang, E. A. Hoffman, J. M. Reinhardt, Atlas-driven lung lobe segmentation in volumetric x-ray ct images., *IEEE Trans Med Imaging* 25 (2006) 1–16.
- [40] I. Isgum, M. Staring, A. Rutten, M. Prokop, M. A. Viergever, B. van Ginneken, Multi-atlas-based segmentation with local decision fusion—application to cardiac and aortic segmentation in ct scans., *IEEE Trans Med Imaging* 28 (2009) 1000–1010.
- [41] E. M. van Rikxoort, M. Prokop, B. de Hoop, M. A. Viergever, J. P. W. Pluim, B. van Ginneken, Automatic segmentation of pulmonary lobes robust against incomplete fissures., *IEEE Trans Med Imaging* 29 (2010) 1286–1296.
- [42] Y. Cui, W. Chen, F.-M. S. Kong, L. A. Olsen, R. E. Beatty, P. G. Maxim, T. Ritter, J. W. Sohn, J. Higgins, J. M. Galvin, Y. Xiao, Contouring variations and the role of atlas in non-small cell lung cancer radiation therapy: Analysis of a multi-institutional preclinical trial planning study., *Pract Radiat Oncol* 5 (2015) e67–e75.
- [43] S. Ukil, J. M. Reinhardt, Smoothing lung segmentation surfaces in three-dimensional x-ray ct images using anatomic guidance., *Acad Radiol* 12 (2005) 1502–1511.
- [44] A. Schmidt-Richberg, J. Ehrhardt, R. Werner, H. Handels, Lung registration with improved fissure alignment by integration of pulmonary lobe segmentation., *Med Image Comput Comput Assist Interv* 15 (2012) 74–81.
- [45] B. Lassen, E. M. van Rikxoort, M. Schmidt, S. Kerkstra, B. van Ginneken, J.-M. Kuhnigk, Automatic segmentation of the pulmonary lobes from

- chest ct scans based on fissures, vessels, and bronchi., *IEEE Trans Med Imaging* 32 (2013) 210–222.
- [46] G. Gill, M. Toews, R. R. Beichel, Robust initialization of active shape models for lung segmentation in ct scans: A feature-based atlas approach., *Int J Biomed Imaging* 2014 (2014) 479154.
- [47] J. Zhou, Z. Yan, G. Lasio, J. Huang, B. Zhang, N. Sharma, K. Prado, W. D’Souza, Automated compromised right lung segmentation method using a robust atlas-based active volume model with sparse shape composition prior in ct., *Comput Med Imaging Graph* 46 Pt 1 (2015) 47–55.
- [48] A. Feragen, J. Petersen, M. Owen, Pechin Lo, L. Hohwu Thomsen, M. M. W. Wille, A. Dirksen, M. de Bruijne, Geodesic atlas-based labeling of anatomical trees: Application and evaluation on airways extracted from ct., *IEEE Trans Med Imaging* 34 (2015) 1212–1226.
- [49] K. K. Brock, D. L. McShan, R. K. Ten Haken, S. J. Hollister, L. A. Dawson, J. M. Balter, Inclusion of organ deformation in dose calculations., *Med Phys* 30 (2003) 290–295.
- [50] H. Paganetti, H. Jiang, J. A. Adams, G. T. Chen, E. Rietzel, Monte carlo simulations with time-dependent geometries to investigate effects of organ motion with high temporal resolution., *Int J Radiat Oncol Biol Phys* 60 (2004) 942–950.
- [51] B. Schaly, J. A. Kempe, G. S. Bauman, J. J. Battista, J. Van Dyk, Tracking the dose distribution in radiation therapy by accounting for variable anatomy., *Phys Med Biol* 49 (2004) 791–805.
- [52] M. Rosu, I. J. Chetty, J. M. Balter, M. L. Kessler, D. L. McShan, R. K. Ten Haken, Dose reconstruction in deforming lung anatomy: Dose grid size effects and clinical implications, *Medical Physics* 32 (2005) 2487.
- [53] S. Flampouri, S. B. Jiang, G. C. Sharp, J. Wolfgang, A. a. Patel, N. C. Choi, Estimation of the delivered patient dose in lung imrt treatment

- based on deformable registration of 4d-ct data and monte carlo simulations., *Physics in medicine and biology* 51 (2006) 2763–79.
- [54] E. Heath, J. Seuntjens, A direct voxel tracking method for four-dimensional monte carlo dose calculations in deforming anatomy, *Medical Physics* 33 (2006) 434.
- [55] J. V. Siebers, H. Zhong, An energy transfer method for 4d monte carlo dose calculation., *Med Phys* 35 (2008) 4096–4105.
- [56] H. Zhong, E. Weiss, J. V. Siebers, Assessment of dose reconstruction errors in image-guided radiation therapy., *Phys Med Biol* 53 (2008) 719–736.
- [57] H. Zhong, J. V. Siebers, Monte carlo dose mapping on deforming anatomy., *Phys Med Biol* 54 (2009) 5815–5830.
- [58] E. Heath, F. Tessier, I. Kawrakow, Investigation of voxel warping and energy mapping approaches for fast 4d monte carlo dose calculations in deformed geometries using vmc++., *Phys Med Biol* 56 (2011) 5187–5202.
- [59] M. Peterhans, D. Frei, P. Manser, M. R. Aguirre, M. K. Fix, Monte carlo dose calculation on deforming anatomy., *Z Med Phys* 21 (2011) 113–123.
- [60] C. L. Williams, P. Mishra, J. Seco, S. St James, R. H. Mak, R. I. Berbeco, J. H. Lewis, A mass-conserving 4d xcat phantom for dose calculation and accumulation., *Med Phys* 40 (2013) 071728.
- [61] H. S. Li, H. Zhong, J. Kim, C. Glide-Hurst, M. Gulam, T. S. Nurushev, I. J. Chetty, Direct dose mapping versus energy/mass transfer mapping for 4d dose accumulation: fundamental differences and dosimetric consequences., *Phys Med Biol* 59 (2014) 173–188.
- [62] E. Rietzel, T. Pan, G. T. Y. Chen, Four-dimensional computed tomography: Image formation and clinical protocol, *Medical Physics* 32 (2005) 874.

- [63] C. K. Glide-Hurst, G. D. Hugo, J. Liang, D. Yan, A simplified method of four-dimensional dose accumulation using the mean patient density representation., *Med Phys* 35 (2008) 5269–5277.
- [64] Y. Y. Vinogradskiy, P. Balter, D. S. Followill, P. E. Alvarez, R. A. White, G. Starkschall, Verification of four-dimensional photon dose calculations., *Med Phys* 36 (2009) 3438–3447.
- [65] G. Starkschall, K. Britton, M. F. McAleer, M. D. Jeter, M. R. Kaus, K. Bzdusek, R. Mohan, J. D. Cox, Potential dosimetric benefits of four-dimensional radiation treatment planning., *Int J Radiat Oncol Biol Phys* 73 (2009) 1560–1565.
- [66] K. R. Britton, G. Starkschall, H. Liu, J. Y. Chang, S. Bilton, M. Ezhil, S. John-Baptiste, M. Kantor, J. D. Cox, R. Komaki, R. Mohan, Consequences of anatomic changes and respiratory motion on radiation dose distributions in conformal radiotherapy for locally advanced non-small-cell lung cancer., *Int J Radiat Oncol Biol Phys* 73 (2009) 94–102.
- [67] X. Li, X. Wang, Y. Li, X. Zhang, A 4d imrt planning method using deformable image registration to improve normal tissue sparing with contemporary delivery techniques., *Radiat Oncol* 6 (2011) 83.
- [68] G. Zhang, V. Feygelman, T.-C. Huang, C. Stevens, W. Li, T. Dilling, Motion-weighted target volume and dose-volume histogram: a practical approximation of four-dimensional planning and evaluation., *Radiother Oncol* 99 (2011) 67–72.
- [69] M. Velec, J. L. Moseley, C. L. Eccles, T. Craig, M. B. Sharpe, L. A. Dawson, K. K. Brock, Effect of breathing motion on radiotherapy dose accumulation in the abdomen using deformable registration., *Int J Radiat Oncol Biol Phys* 80 (2011) 265–272.
- [70] M. Rao, J. Wu, D. Cao, T. Wong, V. Mehta, D. Shepard, J. Ye, Dosimetric impact of breathing motion in lung stereotactic body radiotherapy

treatment using intensity modulated radiotherapy and volumetric modulated arc therapy [corrected]., *Int J Radiat Oncol Biol Phys* 83 (2012) e251–e256.

- [71] N. Yakoumakis, B. Winey, J. Killoran, C. Mayo, T. Niedermayr, G. Panayiotakis, T. Lingos, L. Court, Using four-dimensional computed tomography images to optimize the internal target volume when using volume-modulated arc therapy to treat moving targets., *J Appl Clin Med Phys* 13 (2012) 3850.
- [72] M. K. H. Chan, D. L. W. Kwong, S. C. Y. Ng, A. S. M. Tong, E. K. W. Tam, Experimental evaluations of the accuracy of 3d and 4d planning in robotic tracking stereotactic body radiotherapy for lung cancers., *Med Phys* 40 (2013) 041712.
- [73] G. Valdes, C. Robinson, P. Lee, D. Morel, D. Low, K. S. Iwamoto, J. M. Lamb, Tumor control probability and the utility of 4d vs 3d dose calculations for stereotactic body radiotherapy for lung cancer., *Med Dosim* 40 (2015) 64–69.
- [74] S. Ohira, Y. Ueda, M. Hashimoto, M. Miyazaki, M. Isono, H. Kamikaseda, A. Masaoka, M. Takashina, M. Koizumi, T. Teshima, Vmat-sbrt planning based on an average intensity projection for lung tumors located in close proximity to the diaphragm: a phantom and clinical validity study., *J Radiat Res* 57 (2016) 91–97.
- [75] S. B. Jiang, C. Pope, K. M. Al Jarrah, J. H. Kung, T. Bortfeld, G. T. Y. Chen, An experimental investigation on intra-fractional organ motion effects in lung imrt treatments., *Phys Med Biol* 48 (2003) 1773–1784.
- [76] R. I. Berbeco, C. J. Pope, S. B. Jiang, Measurement of the interplay effect in lung imrt treatment using edr2 films., *J Appl Clin Med Phys* 7 (2006) 33–42.

- [77] Y. Y. Vinogradskiy, P. Balter, D. S. Followill, P. E. Alvarez, R. A. White, G. Starkschall, Comparing the accuracy of four-dimensional photon dose calculations with three-dimensional calculations using moving and deforming phantoms., *Med Phys* 36 (2009) 5000–5006.
- [78] C. Ong, W. F. A. R. Verbakel, J. P. Cuijpers, B. J. Slotman, S. Senan, Dosimetric impact of interplay effect on rapidarc lung stereotactic treatment delivery., *Int J Radiat Oncol Biol Phys* 79 (2011) 305–311.
- [79] X. Li, Y. Yang, T. Li, K. Fallon, D. E. Heron, M. S. Huq, Dosimetric effect of respiratory motion on volumetric-modulated arc therapy-based lung sbrt treatment delivered by truebeam machine with flattening filter-free beam., *J Appl Clin Med Phys* 14 (2013) 4370.
- [80] C. Stambaugh, B. E. Nelms, T. Dilling, C. Stevens, K. Latifi, G. Zhang, E. Moros, V. Feygelman, Experimentally studied dynamic dose interplay does not meaningfully affect target dose in vmat sbrt lung treatments., *Med Phys* 40 (2013) 091710.
- [81] C. L. Ong, M. Dahele, B. J. Slotman, W. F. A. R. Verbakel, Dosimetric impact of the interplay effect during stereotactic lung radiation therapy delivery using flattening filter-free beams and volumetric modulated arc therapy., *Int J Radiat Oncol Biol Phys* 86 (2013) 743–748.
- [82] C. McCann, T. Purdie, A. Hope, A. Bezjak, J.-P. Bissonnette, Lung sparing and dose escalation in a robust-inspired imrt planning method for lung radiotherapy that accounts for intrafraction motion., *Med Phys* 40 (2013) 061705.
- [83] S. Senthil, M. Dahele, B. J. Slotman, S. Senan, Investigating strategies to reduce toxicity in stereotactic ablative radiotherapy for central lung tumors., *Acta Oncol* 53 (2014) 330–335.
- [84] Y. Ge, R. T. O'Brien, C.-C. Shieh, J. T. Booth, P. J. Keall, Toward the

development of intrafraction tumor deformation tracking using a dynamic multi-leaf collimator., *Med Phys* 41 (2014) 061703.

- [85] W. Zou, L. Yin, J. Shen, M. N. Corradetti, M. Kirk, R. Munbodh, P. Fang, S. K. Jabbour, C. B. Simone, 2nd, N. J. Yue, R. Rengan, B.-K. K. Teo, Dynamic simulation of motion effects in imat lung sbirt., *Radiat Oncol* 9 (2014) 225.
- [86] C. Riley, Y. Yang, T. Li, Y. Zhang, D. E. Heron, M. S. Huq, Dosimetric evaluation of the interplay effect in respiratory-gated rapidarc radiation therapy., *Med Phys* 41 (2014) 011715.
- [87] L. Kardar, Y. Li, X. Li, H. Li, W. Cao, J. Y. Chang, L. Liao, R. X. Zhu, N. Sahoo, M. Gillin, Z. Liao, R. Komaki, J. D. Cox, G. Lim, X. Zhang, Evaluation and mitigation of the interplay effects of intensity modulated proton therapy for lung cancer in a clinical setting., *Pract Radiat Oncol* 4 (2014) e259–e268.
- [88] B. M. White, A. Santhanam, D. Thomas, Y. Min, J. M. Lamb, J. Neylon, S. Jani, S. Gaudio, S. Srinivasan, D. Ennis, et al., Modeling and incorporating cardiac-induced lung tissue motion in a breathing motion model, *Medical physics* 41 (2014).
- [89] T. Nakamoto, H. Arimura, K. Nakamura, Y. Shioyama, A. Mizoguchi, T.-A. Hirose, H. Honda, Y. Umezu, Y. Nakamura, H. Hirata, A computerized framework for monitoring four-dimensional dose distributions during stereotactic body radiation therapy using a portal dose image-based 2d/3d registration approach., *Comput Med Imaging Graph* 40 (2015) 1–12.
- [90] S. Ehrbar, S. Lang, S. Stieb, O. Riesterer, L. S. Stark, M. Guckenberger, S. Klöck, Three-dimensional versus four-dimensional dose calculation for volumetric modulated arc therapy of hypofractionated treatments., *Z Med Phys* 26 (2016) 45–53.

- [91] M. Chao, J. Penagaricano, Y. Yan, E. G. Moros, P. Corry, V. Ratanatharathorn, Voxel-based dose reconstruction for total body irradiation with helical tomotherapy., *Int J Radiat Oncol Biol Phys* 82 (2012) 1575–1583.
- [92] J. Wu, C. Betzing, T. T. He, M. Fuss, W. D. D’Souza, Dosimetric comparison of patient setup strategies in stereotactic body radiation therapy for lung cancer., *Med Phys* 40 (2013) 051709.
- [93] G. Ecclestone, J.-P. Bissonnette, E. Heath, Experimental validation of the van herk margin formula for lung radiation therapy, *Medical physics* 40 (2013) 111721.
- [94] C. Ma, Y. Hou, H. Li, D. Li, Y. Zhang, S. Chen, Y. Yin, A study of the anatomic changes and dosimetric consequences in adaptive crt of non-small-cell lung cancer using deformable ct and cbct image registration., *Technol Cancer Res Treat* 13 (2014) 95–100.
- [95] K. Tatekawa, H. Iwata, T. Kawaguchi, S. Ishikura, F. Baba, S. Otsuka, A. Miyakawa, M. Iwana, Y. Shibamoto, Changes in volume of stage i non-small-cell lung cancer during stereotactic body radiotherapy., *Radiat Oncol* 9 (2014) 8.
- [96] A. Swaminath, C. Massey, J. D. Brierley, R. Dinniwell, R. Wong, J. J. Kim, M. Velec, K. K. Brock, L. A. Dawson, Accumulated delivered dose response of stereotactic body radiation therapy for liver metastases., *Int J Radiat Oncol Biol Phys* 93 (2015) 639–648.
- [97] A. R. Cunliffe, C. Contee, S. G. Armato, 3rd, B. White, J. Justusson, R. Malik, H. A. Al-Hallaq, Effect of deformable registration on the dose calculated in radiation therapy planning ct scans of lung cancer patients., *Med Phys* 42 (2015) 391–399.
- [98] A. Duffton, S. Harrow, C. Lamb, M. McJury, An assessment of cone beam

ct in the adaptive radiotherapy planning process for non-small-cell lung cancer patients., *Br J Radiol* 89 (2016) 20150492.

- [99] N. Samavati, M. Velec, K. K. Brock, Effect of deformable registration uncertainty on lung SBRT dose accumulation., *Med Phys* 43 (2016) 233.
- [100] G. Cazoulat, D. Owen, M. M. Matuszak, J. M. Balter, K. K. Brock, Biomechanical deformable image registration of longitudinal lung ct images using vessel information., *Phys Med Biol* 61 (2016) 4826–4839.
- [101] S. Senthil, G. H. M. J. Griffioen, J. R. van Sörnsen de Koste, B. J. Slotman, S. Senan, Comparing rigid and deformable dose registration for high dose thoracic re-irradiation., *Radiother Oncol* 106 (2013) 323–326.
- [102] T. R. Meijneke, S. F. Petit, D. Wentzler, M. Hoogeman, J. J. Nuyttens, Reirradiation and stereotactic radiotherapy for tumors in the lung: dose summation and toxicity., *Radiother Oncol* 107 (2013) 423–427.
- [103] M. J. van Rijssel, M. Dahele, W. F. A. R. Verbakel, T. S. Rosario, A critical approach to the clinical use of deformable image registration software. in response to meijneke et al., *Radiother Oncol* 112 (2014) 447–448.
- [104] T. E. Schultheiss, W. A. Tome, C. G. Orton, Point/counterpoint: it is not appropriate to "deform" dose along with deformable image registration in adaptive radiotherapy., *Med Phys* 39 (2012) 6531–6533.
- [105] U. Yeo, M. Taylor, J. Supple, R. Smith, L. Dunn, T. Kron, R. Franich, Is it sensible to "deform" dose? 3d experimental validation of dose-warping., *Med Phys* 39 (2012) 5065–5072.
- [106] M. L. Taylor, U. J. Yeo, T. Kron, J. Supple, S. Siva, D. Pham, R. D. Franich, Comment on "it is not appropriate to 'deform' dose along with deformable image registration in adaptive radiotherapy" [*med. phys.* 39, 6531-6533 (2012)]., *Med Phys* 40 (2013) 017101.

- [107] T. E. Schultheiss, W. A. Tome, Response to "comment on 'it is not appropriate to "deform" dose along with deformable image registration in adaptive radiotherapy'" [med. phys. 39, 6531-6533 (2012)]., Med Phys 40 (2013) 017102.
- [108] F. J. Salguero, N. K. Saleh-Sayah, C. Yan, J. V. Siebers, Estimation of three-dimensional intrinsic dosimetric uncertainties resulting from using deformable image registration for dose mapping., Med Phys 38 (2011) 343–353.
- [109] S. Li, C. Glide-Hurst, M. Lu, J. Kim, N. Wen, J. N. Adams, J. Gordon, I. J. Chetty, H. Zhong, Voxel-based statistical analysis of uncertainties associated with deformable image registration., Phys Med Biol 58 (2013) 6481–6494.
- [110] N. Hardcastle, E. T. Bender, W. A. Tomé, The effect on dose accumulation accuracy of inverse-consistency and transitivity error reduced deformation maps., Australas Phys Eng Sci Med 37 (2014) 321–326.
- [111] S. Nithiananthan, S. Schafer, D. J. Mirota, J. W. Stayman, W. Zbijewski, D. D. Reh, G. L. Gallia, J. H. Siewerdsen, Extra-dimensional demons: a method for incorporating missing tissue in deformable image registration., Med Phys 39 (2012) 5718–5731.
- [112] C. J. Niu, W. D. Foltz, M. Velec, J. L. Moseley, A. Al-Mayah, K. K. Brock, A novel technique to enable experimental validation of deformable dose accumulation., Med Phys 39 (2012) 765–776.
- [113] H. Zhong, J. Adams, C. Glide-Hurst, H. Zhang, H. Li, I. J. Chetty, Development of a deformable dosimetric phantom to verify dose accumulation algorithms for adaptive radiotherapy., J Med Phys 41 (2016) 106–114.
- [114] J. Kim, Y. Lee, H. Shin, S. Ji, S. Park, J. Kim, H. Jang, Y. Kang, Development of deformable moving lung phantom to simulate respiratory motion in radiotherapy., Med Dosim 41 (2016) 113–117.

- [115] J. Matney, P. C. Park, J. Bluett, Y. P. Chen, W. Liu, L. E. Court, Z. Liao, H. Li, R. Mohan, Effects of respiratory motion on passively scattered proton therapy versus intensity modulated photon therapy for stage iii lung cancer: are proton plans more sensitive to breathing motion?, *Int J Radiat Oncol Biol Phys* 87 (2013) 576–582.
- [116] S. Dowdell, C. Grassberger, H. Paganetti, Four-dimensional monte carlo simulations demonstrating how the extent of intensity-modulation impacts motion effects in proton therapy lung treatments., *Med Phys* 40 (2013) 121713.
- [117] J. Phillips, G. Gueorguiev, J. A. Shackelford, C. Grassberger, S. Dowdell, H. Paganetti, G. C. Sharp, Computing proton dose to irregularly moving targets., *Phys Med Biol* 59 (2014) 4261–4273.
- [118] M. C. Han, Y. S. Yeom, C. H. Kim, S. Kim, J. W. Sohn, New approach based on tetrahedral-mesh geometry for accurate 4d monte carlo patient-dose calculation., *Phys Med Biol* 60 (2015) 1601–1612.
- [119] M. Kumagai, S. Mori, N. Yamamoto, Impact of treatment planning with deformable image registration on dose distribution for carbon-ion beam lung treatment using a fixed irradiation port and rotating couch., *Br J Radiol* 88 (2015) 20140734.
- [120] A. Fassi, M. Seregni, M. Riboldi, P. Cerveri, D. Sarrut, G. B. Ivaldi, P. T. de Fatis, M. Liotta, G. Baroni, Surrogate-driven deformable motion model for organ motion tracking in particle radiation therapy., *Phys Med Biol* 60 (2015) 1565–1582.
- [121] C. Veiga, G. Janssens, C.-L. Teng, T. Baudier, L. Hotoiu, J. R. McClelland, G. Royle, L. Lin, L. Yin, J. Metz, T. D. Solberg, Z. Tochner, C. B. Simone, 2nd, J. McDonough, B.-K. K. Teo, First clinical investigation of cone beam computed tomography and deformable registration for adaptive proton therapy for lung cancer., *Int J Radiat Oncol Biol Phys* 95 (2016) 549–559.

- [122] B. Lu, K. Mittauer, J. Li, S. Samant, R. Dagan, P. Okunieff, D. Kahler, C. Liu, A patient alignment solution for lung sbrt setups based on a deformable registration technique., *Med Phys* 39 (2012) 7379–7389.
- [123] T. Chen, S. K. Jabbour, S. Qin, B. G. Haffty, N. Yue, Objected constrained registration and manifold learning: a new patient setup approach in image guided radiation therapy of thoracic cancer., *Med Phys* 40 (2013) 041710.
- [124] S. Robertson, E. Weiss, G. D. Hugo, Deformable mesh registration for the validation of automatic target localization algorithms., *Med Phys* 40 (2013) 071721.
- [125] B. Lu, S. Samant, K. Mittauer, S. Lee, Y. Huang, J. Li, D. Kahler, C. Liu, A further investigation of the centroid-to-centroid method for stereotactic lung radiotherapy: a phantom study., *Med Phys* 40 (2013) 101704.
- [126] E. E. Schaake, M. M. G. Rossi, W. A. Buikhuisen, J. A. Burgers, A. A. J. Smit, J. S. A. Belderbos, J.-J. Sonke, Differential motion between mediastinal lymph nodes and primary tumor in radically irradiated lung cancer patients., *Int J Radiat Oncol Biol Phys* 90 (2014) 959–966.
- [127] D. Sarrut, V. Boldea, M. Ayadi, J.-N. Badel, C. Ginestet, S. Clippe, C. Carrie, Nonrigid registration method to assess reproducibility of breath-holding with abc in lung cancer., *International journal of radiation oncology, biology, physics* 61 (2005) 594–607.
- [128] K. Du, J. M. Reinhardt, G. E. Christensen, K. Ding, J. E. Bayouth, Respiratory effort correction strategies to improve the reproducibility of lung expansion measurements., *Med Phys* 40 (2013) 123504.
- [129] N. Fukumitsu, Y. Hayashi, Application of a deformable registration technique to investigate breath-hold reproducibility., *Jpn J Radiol* 32 (2014) 700–707.

- [130] W. Ottosson, F. Rahma, D. Sjöström, C. F. Behrens, P. Sibolt, The advantage of deep-inspiration breath-hold and cone-beam ct based soft-tissue registration for locally advanced lung cancer radiotherapy., *Radiother Oncol* 119 (2016) 432–437.
- [131] G. T. Y. Chen, J. H. Kung, K. P. Beaudette, Artifacts in computed tomography scanning of moving objects., *Seminars in radiation oncology* 14 (2004) 19–26.
- [132] G. Wu, J. Lian, D. Shen, Improving image-guided radiation therapy of lung cancer by reconstructing 4d-ct from a single free-breathing 3d-ct on the treatment day., *Med Phys* 39 (2012) 7694–7709.
- [133] A. Bhavsar, G. Wu, J. Lian, D. Shen, Resolution enhancement of lung 4d-ct via group-sparsity., *Med Phys* 40 (2013) 121717.
- [134] D. A. Low, B. M. White, P. P. Lee, D. H. Thomas, S. Gaudio, S. S. Jani, X. Wu, J. M. Lamb, A novel ct acquisition and analysis technique for breathing motion modeling., *Phys Med Biol* 58 (2013) L31–L36.
- [135] Y. Zhang, J. Yang, L. Zhang, L. E. Court, P. A. Balter, L. Dong, Modeling respiratory motion for reducing motion artifacts in 4d ct images., *Med Phys* 40 (2013) 041716.
- [136] M. F. Kruis, J. B. van de Kamer, J. S. A. Belderbos, J.-J. Sonke, M. van Herk, 4d ct amplitude binning for the generation of a time-averaged 3d mid-position ct scan., *Phys Med Biol* 59 (2014) 5517–5529.
- [137] D. Thomas, J. Lamb, B. White, S. Jani, S. Gaudio, P. Lee, D. Ruan, M. McNitt-Gray, D. Low, A novel fast helical 4d-ct acquisition technique to generate low-noise sorting artifact-free images at user-selected breathing phases., *Int J Radiat Oncol Biol Phys* 89 (2014) 191–198.
- [138] H. Dang, A. Wang, M. S. Sussman, J. Siewerdsen, J. Stayman, dPIRPLE: a joint estimation framework for deformable registration and penalized-

- likelihood ct image reconstruction using prior images., *Phys Med Biol* 59 (2014) 4799–4826.
- [139] S. Rit, D. Sarrut, L. Desbat, Comparison of analytic and algebraic methods for motion-compensated cone-beam ct reconstruction of the thorax., *IEEE transactions on medical imaging* 28 (2009) 1513–1525.
- [140] J. Wang, X. Gu, High-quality four-dimensional cone-beam CT by deforming prior images., *Phys Med Biol* 58 (2013) 231–246.
- [141] J. Wang, X. Gu, Simultaneous motion estimation and image reconstruction (SMEIR) for 4D cone-beam CT, *Med Phys* 40 (2013) 101912.
- [142] M. Brehm, P. Paysan, M. Oelhafen, M. Kachelrieß, Artifact-resistant motion estimation with a patient-specific artifact model for motion-compensated cone-beam ct, *Medical physics* 40 (2013) 101913.
- [143] V. Delmon, J. Vandemeulebroucke, R. Pinho, M. V. Oliva, D. Sarrut, S. Rit, In-room breathing motion estimation from limited projection views using a sliding deformation model, in: *Journal of Physics: Conference Series*, volume 489, IOP Publishing, 2014, p. 012026.
- [144] M. L. Schmidt, P. R. Poulsen, J. Toftegaard, L. Hoffmann, D. Hansen, T. S. Sørensen, Clinical use of iterative 4d-cone beam computed tomography reconstructions to investigate respiratory tumor motion in lung cancer patients., *Acta Oncol* 53 (2014) 1107–1113.
- [145] J. Dang, X. Gu, T. Pan, J. Wang, A pilot evaluation of a 4-dimensional cone-beam computed tomographic scheme based on simultaneous motion estimation and image reconstruction., *Int J Radiat Oncol Biol Phys* 91 (2015) 410–418.
- [146] Z. Zhong, X. Gu, W. Mao, J. Wang, 4d cone-beam ct reconstruction using multi-organ meshes for sliding motion modeling., *Phys Med Biol* 61 (2016) 996–1020.

- [147] J. W. H. Wolthaus, C. Schneider, J.-J. Sonke, H. Mid-ventilation ct scan construction from four-dimensional respiration-correlated ct scans for radiotherapy planning of lung cancer patients, *International Journal of Radiation Oncology, Biology, Physics* 65 (2006) 1560–1571.
- [148] J. W. H. Wolthaus, J.-J. Sonke, M. van Herk, J. S. a. Belderbos, M. M. G. Rossi, J. V. Lebesque, E. M. F. Damen, Comparison of different strategies to use four-dimensional computed tomography in treatment planning for lung cancer patients., *International journal of radiation oncology, biology, physics* 70 (2008) 1229–38.
- [149] J. W. H. Wolthaus, J.-J. Sonke, M. van Herk, E. M. F. Damen, Reconstruction of a time-averaged midposition ct scan for radiotherapy planning of lung cancer patients using deformable registration, *Medical Physics* 35 (2008) 3998.
- [150] J.-J. Sonke, M. M. G. Rossi, J. W. H. Wolthaus, M. van Herk, E. M. F. Damen, J. S. a. Belderbos, Frameless stereotactic body radiotherapy for lung cancer using four-dimensional cone beam ct guidance., *International journal of radiation oncology, biology, physics* 74 (2009) 567–74.
- [151] T. Guerrero, K. Sanders, J. Noyola-Martinez, E. Castillo, Y. Zhang, R. Tapia, R. Guerra, Y. Borghero, R. Komaki, Quantification of regional ventilation from treatment planning ct., *International journal of radiation oncology, biology, physics* 62 (2005) 630–4.
- [152] T. Guerrero, K. Sanders, E. Castillo, Y. Zhang, L. Bidaut, T. Pan, R. Komaki, Dynamic ventilation imaging from four-dimensional computed tomography., *Phys Med Biol* 51 (2006) 777–791.
- [153] Y. Y. Vinogradskiy, R. Castillo, E. Castillo, A. Chandler, M. K. Martel, T. Guerrero, Use of weekly 4dct-based ventilation maps to quantify changes in lung function for patients undergoing radiation therapy., *Med Phys* 39 (2012) 289–298.

- [154] Y. Vinogradskiy, R. Castillo, E. Castillo, S. L. Tucker, Z. Liao, T. Guerrero, M. K. Martel, Use of 4-dimensional computed tomography-based ventilation imaging to correlate lung dose and function with clinical outcomes., *Int J Radiat Oncol Biol Phys* 86 (2013) 366–371.
- [155] Y. Vinogradskiy, P. J. Koo, R. Castillo, E. Castillo, T. Guerrero, L. E. Gaspar, M. Miften, B. D. Kavanagh, Comparison of 4-dimensional computed tomography ventilation with nuclear medicine ventilation-perfusion imaging: a clinical validation study., *Int J Radiat Oncol Biol Phys* 89 (2014) 199–205.
- [156] T. Yamamoto, S. Kabus, C. Lorenz, E. Mitra, J. C. Hong, M. Chung, N. Eclow, J. To, M. Diehn, B. W. Loo, Jr, P. J. Keall, Pulmonary ventilation imaging based on 4-dimensional computed tomography: comparison with pulmonary function tests and spect ventilation images., *Int J Radiat Oncol Biol Phys* 90 (2014) 414–422.
- [157] J. Kipritidis, G. Hugo, E. Weiss, J. Williamson, P. J. Keall, Measuring interfraction and intrafraction lung function changes during radiation therapy using four-dimensional cone beam ct ventilation imaging., *Med Phys* 42 (2015) 1255–1267.
- [158] N. Kadoya, S. Y. Cho, T. Kanai, Y. Onozato, K. Ito, S. Dobashi, T. Yamamoto, R. Umezawa, H. Matsushita, K. Takeda, K. Jingu, Dosimetric impact of 4-dimensional computed tomography ventilation imaging-based functional treatment planning for stereotactic body radiation therapy with 3-dimensional conformal radiation therapy., *Pract Radiat Oncol* 5 (2015) e505–e512.
- [159] J. Kipritidis, M. S. Hofman, S. Siva, J. Callahan, P.-Y. Le Roux, H. C. Woodruff, W. B. Counter, P. J. Keall, Estimating lung ventilation directly from 4d ct hounsfield unit values., *Med Phys* 43 (2016) 33.
- [160] S. Kida, M. Bal, S. Kabus, M. Negahdar, X. Shan, B. W. Loo, Jr, P. J.

- Keall, T. Yamamoto, Ct ventilation functional image-based imrt treatment plans are comparable to spect ventilation functional image-based plans., *Radiother Oncol* 118 (2016) 521–527.
- [161] T. Yamamoto, S. Kabus, M. Bal, P. Keall, S. Benedict, M. Daly, The first patient treatment of computed tomography ventilation functional image-guided radiotherapy for lung cancer., *Radiother Oncol* 118 (2016) 227–231.
- [162] U. Bernchou, T. Schytte, A. Bertelsen, S. M. Bentzen, O. Hansen, C. Brink, Time evolution of regional ct density changes in normal lung after imrt for nscl., *Radiother Oncol* 109 (2013) 89–94.
- [163] Y. Vinogradskiy, Q. Diot, B. Kavanagh, T. Schefter, L. Gaspar, M. Miften, Spatial and dose-response analysis of fibrotic lung changes after stereotactic body radiation therapy., *Med Phys* 40 (2013) 081712.
- [164] A. R. Cunliffe, B. White, J. Justusson, C. Straus, R. Malik, H. A. Al-Hallaq, S. G. Armato, 3rd, Comparison of two deformable registration algorithms in the presence of radiologic change between serial lung ct scans., *J Digit Imaging* 28 (2015) 755–760.
- [165] A. Cunliffe, S. G. Armato, 3rd, R. Castillo, N. Pham, T. Guerrero, H. A. Al-Hallaq, Lung texture in serial thoracic computed tomography scans: correlation of radiomics-based features with radiation therapy dose and radiation pneumonitis development., *Int J Radiat Oncol Biol Phys* 91 (2015) 1048–1056.
- [166] A. McWilliam, C. Faivre-Finn, J. Kennedy, L. Kershaw, M. van Herk, Data mining identifies the base of the heart as a dose-sensitive region affecting survival in lung cancer patients, in: *I. J. of Radiation Oncology*Biography*Physics* (Ed.), *Proceedings of the 58th Annual Meeting of the American Society for Radiation Oncology*, volume 96 of 2, 2016, pp. S48–S49.

- [167] D. Boye, T. Lomax, A. Knopf, Mapping motion from 4d-mri to 3d-ct for use in 4d dose calculations: a technical feasibility study., *Med Phys* 40 (2013) 061702.
- [168] M. Marx, J. Ehrhardt, R. Werner, H.-P. Schlemmer, H. Handels, Simulation of spatiotemporal ct data sets using a 4d mri-based lung motion model., *Int J Comput Assist Radiol Surg* 9 (2014) 401–409.
- [169] Y. Yang, E. Van Reeth, C. Poh, C. Tan, I. W. K. Tham, A spatiotemporal-based scheme for efficient registration-based segmentation of thoracic 4-d mri., *IEEE J Biomed Health Inform* 18 (2014) 969–977.
- [170] Y. Yang, S.-K. Teo, E. Van Reeth, C. Tan, I. W. K. Tham, C. Poh, A hybrid approach for fusing 4d-mri temporal information with 3d-ct for the study of lung and lung tumor motion., *Med Phys* 42 (2015) 4484–4496.
- [171] W. H. Nam, I. J. Ahn, K. M. Kim, B. I. Kim, J. B. Ra, Motion-compensated pet image reconstruction with respiratory-matched attenuation correction using two low-dose inhale and exhale ct images., *Phys Med Biol* 58 (2013) 7355–7374.
- [172] T.-C. Huang, K.-T. Chou, Y.-C. Wang, G. Zhang, Motion freeze for respiration motion correction in pet/ct: a preliminary investigation with lung cancer patient data., *Biomed Res Int* 2014 (2014) 167491.
- [173] M. F. Kruis, J. B. van de Kamer, A. C. Houweling, J.-J. Sonke, J. S. A. Belderbos, M. van Herk, Pet motion compensation for radiation therapy using a ct-based mid-position motion model: methodology and clinical evaluation., *Int J Radiat Oncol Biol Phys* 87 (2013) 394–400.
- [174] S. Yip, A. B. Chen, H. J. W. L. Aerts, R. Berbeco, Sensitivity study of voxel-based pet image comparison to image registration algorithms., *Med Phys* 41 (2014) 111714.
- [175] N. Hardcastle, M. S. Hofman, R. J. Hicks, J. Callahan, T. Kron, M. P. MacManus, D. L. Ball, P. Jackson, S. Siva, Accuracy and utility of de-

formable image registration in (68)ga 4d pet/ct assessment of pulmonary perfusion changes during and after lung radiation therapy., *Int J Radiat Oncol Biol Phys* 93 (2015) 196–204.

- [176] G. S. M. A. Kerner, V. R. Bollineni, T. J. N. Hiltermann, N. M. Sijtsema, A. Fischer, A. H. H. Bongaerts, J. Pruim, H. J. M. Groen, An exploratory study of volumetric analysis for assessing tumor response with (18)f-faza pet/ct in patients with advanced non-small-cell lung cancer (nslc)., *EJN-MMI Res* 6 (2016) 33.
- [177] B. B. Avants, N. J. Tustison, G. Song, P. A. Cook, A. Klein, J. C. Gee, A reproducible evaluation of ants similarity metric performance in brain image registration., *Neuroimage* 54 (2011) 2033–2044.
- [178] M. Modat, D. M. Cash, P. Daga, G. P. Winston, J. S. Duncan, S. Ourselin, Global image registration using a symmetric block-matching approach., *J Med Imaging (Bellingham)* 1 (2014) 024003.
- [179] S. Klein, M. Staring, K. Murphy, M. A. Viergever, J. P. W. Pluim, Elastix: a toolbox for intensity-based medical image registration., *IEEE Trans Med Imaging* 29 (2010) 196–205.
- [180] P. Zaffino, P. Raudaschl, K. Fritscher, G. C. Sharp, M. F. Spadea, Technical note: plastimatch mabs, an open source tool for automatic image segmentation., *Medical physics* 43 (2016) 5155.
- [181] D. Yang, S. Brame, I. El Naqa, A. Aditya, Y. Wu, S. M. Goddu, S. Mutic, J. O. Deasy, D. A. Low, Technical note: Dirart—a software suite for deformable image registration and adaptive radiotherapy research., *Med Phys* 38 (2011) 67–77.
- [182] S. Rit, R. Pinho, V. Delmon, M. Pech, G. Bouilhol, J. Schaerer, B. Navalpakkam, J. Vandemeulebroucke, P. Seroul, D. Sarrut, Vv, a 4d slicer, in: *Proceedings of the Fourth International Workshop on Pulmonary Im-*

age Analysis, Toronto, Canada, 2011, p. 171–175. URL: <http://www.creatis.insa-lyon.fr/~srit/biblio/rit2011b.pdf>.

- [183] O. Weistrand, S. Svensson, The anaconda algorithm for deformable image registration in radiotherapy., *Med Phys* 42 (2015) 40–53.
- [184] I. S. Ramadaan, K. Peick, D. A. Hamilton, J. Evans, D. Iupati, A. Nicholson, L. Greig, R. J. W. Louwe, Validation of varian’s smartadapt deformable image registration algorithm for clinical application., *Radiat Oncol* 10 (2015) 73.