



**HAL**  
open science

## Purification of dirucotide, a synthetic 17-aminoacid peptide, by ion exchange centrifugal partition chromatography

Leslie Boudesocque-Delaye, Luciano Forni, Agathe Martinez, Jean-Marc Nuzillard, Matthieu Giraud, Jean-Hugues Renault

### ► To cite this version:

Leslie Boudesocque-Delaye, Luciano Forni, Agathe Martinez, Jean-Marc Nuzillard, Matthieu Giraud, et al.. Purification of dirucotide, a synthetic 17-aminoacid peptide, by ion exchange centrifugal partition chromatography. *Journal of Chromatography A*, 2017, 1513, pp.78-83. 10.1016/j.chroma.2017.07.003 . hal-01608841

**HAL Id: hal-01608841**

**<https://hal.science/hal-01608841v1>**

Submitted on 22 Sep 2021

**HAL** is a multi-disciplinary open access archive for the deposit and dissemination of scientific research documents, whether they are published or not. The documents may come from teaching and research institutions in France or abroad, or from public or private research centers.

L'archive ouverte pluridisciplinaire **HAL**, est destinée au dépôt et à la diffusion de documents scientifiques de niveau recherche, publiés ou non, émanant des établissements d'enseignement et de recherche français ou étrangers, des laboratoires publics ou privés.

1 **Purification of dirucotide, a synthetic 17-aminoacid**  
2 **peptide, by ion exchange centrifugal partition**  
3 **chromatography**

4 Leslie Boudesocque,<sup>a,b</sup> Luciano Forni,<sup>c</sup> Agathe Martinez,<sup>a</sup> Jean-Marc Nuzillard,<sup>a</sup> Matthieu  
5 Giraud,<sup>c</sup> and Jean-Hugues Renault<sup>a\*</sup>

6 <sup>a</sup> *Institut de Chimie Moléculaire de Reims UMR CNRS 7312, SFR Cap'Santé, Université de Reims*  
7 *Champagne-Ardenne, Reims, France*

8 <sup>b</sup> *UMR INRA 1282 Infectiologie Santé Publique, Université de Tours François Rabelais, UFR Sciences*  
9 *Pharmaceutiques Philippe Maupas, Tours, France*

10 <sup>c</sup> *Lonza Ltd, Valais Work CH-3930 Visp, Switzerland*

11

12 Corresponding author:

13 Professor Jean-Hugues RENAULT

14 address: *ICMR UMR CNRS 7312, Université de Reims Champagne-Ardenne, Bât. 18, Moulin de la*  
15 *Housse, B.P. 1039, 51687 Reims cedex 2, France*

16 *Phone: +33(0)3 26 91 34 03*

17 *E mail: [jh.renault@univ-reims.fr](mailto:jh.renault@univ-reims.fr)*

18

19

20

21

22

23

24

25

26

27 **Purification of a 17-aminoacid peptide called dirucotide**  
28 **using ion exchange centrifugal partition chromatography**

29 Leslie Boudesocque,<sup>a,b</sup> Luciano Forni,<sup>c</sup> Agathe Martinez,<sup>a</sup> Jean-Marc Nuzillard,<sup>a</sup> Matthieu  
30 Giraud,<sup>c</sup> and Jean-Hugues Renault<sup>a\*</sup>

31 <sup>a</sup> *Institut de Chimie Moléculaire de Reims UMR CNRS 7312, SFR Cap'Santé, Université de Reims*  
32 *Champagne-Ardenne, Reims, France*

33 <sup>b</sup> *UMR INRA 1282 Infectiologie Santé Publique, Université de Tours François Rabelais, UFR Sciences*  
34 *Pharmaceutiques Philippe Maupas, Tours, France*

35 <sup>c</sup> *Lonza Ltd, Valais Work CH-3930 Visp, Switzerland*

36

37

38 **Abstract:** Dirucotide is a synthetic drug candidate for the treatment of multiple  
39 sclerosis. This 17-aminoacid peptide was successfully purified by ion exchange  
40 centrifugal partition chromatography. The optimized conditions involved the biphasic  
41 methyl *tert*-butyl ether/acetonitrile/*n*-butanol/water (2:1:2:5, v/v) solvent system in the  
42 descending mode, the di(2-ethylhexyl)phosphoric acid cation-exchanger with an  
43 exchanger (di(2-ethylhexyl)phosphoric acid)/dirucotide mole ratio of 100 and Ca<sup>2+</sup>  
44 ions in aqueous solution as displacer. Critical impurities were efficiently eliminated  
45 and dirucotide was recovered in high yield and purity (69 % and 98 %, respectively)  
46 and with a productivity of 2.29 g per liter of stationary phase per hour.

47

48 **Keywords:** Bioactive peptide, dirucotide, Centrifugal Partition Chromatography, Ion  
49 Exchange, multiple sclerosis.

---

50

## 51 **1. Introduction**

52 Multiple sclerosis (MS) is an inflammatory neurodegenerative disease in which the  
53 myelin sheath around the axons of the brain and spinal cord are damaged. [1] MS  
54 affects young adults and it is more common in women. Few therapeutic agents such  
55 as interferon  $\beta$ -1a and  $\beta$ -1b, natalizumab,— mitoxanthrone, tereflunomide,  
56 alemtuzumab, dimethylfumarate [2-4] have been approved by regulatory agencies to  
57 treat MS.

58 Other drugs, such as dirucotide (figure 1), are under evaluation.[5] This synthetic  
59 17-aminoacid peptide, also called MBP8298 and co-developed by BioMS Medical  
60 and Eli Lilly Company is an analog of myelin basic protein with a sequence  
61 corresponding to its 82-98 residues.[6] First stages of clinical trials have  
62 demonstrated the high potential of this drug for secondary progressive multiple  
63 sclerosis treatment [3,7] but the result of final phases were not satisfactory, due to  
64 the lack of efficacy although dirucotide was generally well tolerated. Dirucotide  
65 analogues such as citrullinated modified peptide analogues are currently under  
66 development. ~~Dirucoted~~ Dirucotide was produced by solid phase synthesis and the  
67 last purification steps appeared to be the bottleneck of the process: some critical  
68 impurities were partially co-eluted in classical chromatographic processes, such as  
69 reversed phase High Performance Liquid Chromatography (HPLC).

70

71

*Insert here figure 1*

72

73 In order to improve the final purification of dirucotide, other chromatographic  
74 processes were investigated such as support-free liquid/liquid chromatography and  
75 particularly Centrifugal Partition Chromatography (CPC) [8,9], this technique having  
76 emerged as an interesting alternative tool for the purification of natural and synthetic  
77 products. For instance, the support-free liquid-liquid chromatography, in its  
78 hydrostatic (CPC) and its hydrodynamic (Countercurrent Chromatography or CCC)  
79 variants [8], has already been applied to peptide purification. In this context, specific  
80 biphasic solvent systems were developed for the purification of short or hydrophobic  
81 peptides in the elution mode using, for example, the quaternary biphasic system  
82 MtBE/acetonitrile/*n*-butanol/water with 1% TFA. [10-12]

83 In addition to the common elution mode, the displacement mode was introduced in  
84 countercurrent chromatography (CCC) in 1994 [13] and very early applied to the  
85 purification of protected peptides.[14,15] Displacement mode in CPC encompasses  
86 two types of processes: pH-zone refining and ion-exchange. [16-18] This is a highly  
87 productive and selective purification method that was successfully applied to very  
88 diverse classes of organic molecules. The pH-zone refining mode, is dedicated to  
89 solutes that show a dramatic difference in polarity, and therefore in solubility,  
90 between their neutral and ionized forms. This feature excludes the application of pH-  
91 zone-refining to ionized, or strictly water-soluble, or to amphoteric molecules such as  
92 free peptides. More recently, an efficient purification process was reported for the  
93 purification of unprotected peptides by strong ion exchange CPC (IX-CPC). [18,19] It  
94 makes use of a very common and cheap lipophilic cation exchanger, di-(2-  
95 ethylhexyl)phosphoric acid (DEHPA), whose anionic sites are activated by addition of  
96 triethylamine (TEA). The activated exchanger is dissolved in the organic stationary  
97 phase in order to extract the hydrophilic peptides by ionic association during the

98 injection step. Then, a displacer-containing aqueous mobile phase is pumped  
99 through the stationary phase, thus forcing the ionic analytes to be displaced in the  
100 aqueous mobile phase and to move along the column. A  $\text{Ca}^{2+}$  aqueous solution was  
101 used for this purpose in the present case. As in any other displacement  
102 chromatography techniques, the analytes move in the CPC column as an isotachic  
103 train, with the ionization state of the analytes being left unchanged throughout the  
104 whole chromatographic process. This last point constitutes the main difference  
105 between ion exchange and pH-zone refining, which involves multiple changes in the  
106 ionization state of the analytes through acid-base reactions.

107

108 In addition to dipeptides [18], IX-CPC was also applied to the purification of natural  
109 products such as glucosinolates, [20] and organic acids [21] for instance. In all cases,  
110 it demonstrated ease of implementation as well as high selectivity and productivity.

111 Then, the main aim of this work was to assess the performance of the IXPCP  
112 strategy for the purification of a peptide active pharmaceutical ingredients such as  
113 dirucotide.

114

## 115 **2. Material and Methods**

### 116 *2.1. Reagents*

117 Acetonitrile ( $\text{CH}_3\text{CN}$ ), *n*-butanol (*n*-BuOH), methyl-*tert*-butyl ether (MtBE), methanol  
118 (MeOH) and deuterated chloroform ( $\text{CDCl}_3$ ) were purchased as chromatographic  
119 grade solvents from Carlo Erba (Rodano, Italy). Trifluoroacetic acid (TFA), calcium  
120 chloride ( $\text{CaCl}_2$ ), di(2-ethylhexyl)phosphoric acid (DEHPA), triethylamine (TEA) were  
121 purchased from Acros Organics (Illkirch, France). Water was purified by de-ionization  
122 and reverse osmosis. Dirucotide was kindly provided by Lonza (Braine, Belgium).

123 The HPLC purity of the sample of dirucotide (Lonza lot number 3AH2) was 84.3 %.  
124 Dirucotide is a peptide containing 17 amino acids, with an isoelectric point of 7.5  
125 (according to Emboss emboss.sourceforge.net) and a molecular weight mass of  
126 2012 g.mol<sup>-1</sup>. Its sequence is H<sub>2</sub>N-Asp-Glu-Asn-Pro-Val-Val-His-Phe-Phe-Lys-Asn-  
127 Ile-Val-Thr-Pro-Arg-Thr-COOH.

128

## 129 *2.2. CPC Apparatus*

130 The separations were performed on a FCPC Kromaton Technologies apparatus  
131 (Annonay, France) using a rotor made of 20 circular partition disks (1320 partition  
132 cells: 0.130 mL per cell; total column capacity: 205 mL, dead volume: 32.3 mL).  
133 Rotation speed could be adjusted from 200 to 2000 rpm, producing a centrifugal  
134 force field in the partition cell of ~120 g at 1000 rpm and 480 g at 2000 rpm. The  
135 solvents were pumped by a Dionex P580HPG 4-way binary high-pressure gradient  
136 pump (Sunnyvale, CA, USA).

137 The samples were introduced into the column through a preparative scale sample  
138 injector 3725 (Rheodyne, Rohnert Park, CA, USA) equipped with a 10 mL sample  
139 loop. Effluent detection monitoring was controlled by a Dionex UVD 170S detector at  
140  $\lambda = 215$  nm equipped with a preparative flow cell (6 $\mu$ L internal volume, path length of  
141 2 mm). Fractions (2 mL) were collected by a Pharmacia Superfrac collector (Uppsala,  
142 Sweden). The experiments were conducted at room temperature ( $22 \pm 2$  °C).

143

## 144 *2.3. Preparation of biphasic solvent system for CPC runs*

145 Biphasic system (2 L) was prepared by mixing MtBE, CH<sub>3</sub>CN, *n*-BuOH and water in  
146 the suitable proportions in a separatory funnel. They were vigorously shaken and  
147 then allowed to settle until the phases became limpid. After phase separation,

148 DEHPA was added to the organic stationary phase. TEA was then added to activate  
149 DEHPA at the DEHPA/TEA molar ratio of 46.5. The mobile phase was prepared by  
150 adding the appropriate amount of CaCl<sub>2</sub>. The experimental conditions are presented  
151 in table 1.

152

#### 153 *2.4. Sample preparation for CPC runs*

154 100, 200 and 400 mg of dirucotide sample were dissolved in 7.5 mL of fresh aqueous  
155 phase (without displacer). This aqueous solution was equilibrated with 2.5 mL of  
156 DEHPA-free organic phase to restore saturation of the aqueous phase (about 1 mL  
157 the organic phase dissolves in the aqueous phase).

158 1 g of dirucotide was dissolved in 15 mL of fresh aqueous phase, and this solution  
159 was equilibrated with 5 mL of fresh organic phase to restore saturation of the  
160 aqueous phase and thus the biphasic system. The two phases are then loaded  
161 through the injection loop.

162

#### 163 *2.5. CPC experimental conditions*

164 All experimental data are summarized in Table 1 and the overall protocol is shown  
165 figure 2. Before any experiment, the column was washed by MeOH/water (50:50, v/v)  
166 in the ascending mode (at 20 mL/min and 200 rpm). Then, two column volumes (410  
167 mL) of organic stationary phase (SP) were pumped in the descending mode at the  
168 same flow rate and rotation speed. The sample was then injected through the sample  
169 loop at 2 mL/min in the descending mode, the rotation speed being increased to  
170 1200 rpm. Afterwards, the displacer-free mobile phase (MP) (50 mL on average) was  
171 pumped at 2 mL/min in order to allow column equilibration. Finally, the aqueous  
172 mobile phase containing the displacer (Ca<sup>2+</sup>) was pumped at 2 mL/min, and the



173 fractions were collected every minute. The aqueous effluent was monitored by on-  
174 line UV absorbance measurement at  $\lambda = 220$  nm. Stationary phase retention and  
175 back pressure were about 75 %. 35 bars, respectively. Fractions were lyophilized  
176 after HPLC analysis to recover the dirucotide.

177

178 *Insert here table 1 and figure 2*

179

## 180 2.6. Fraction analysis

181 Quantification was performed on a customized Dionex Summit HPLC system,  
182 equipped with a P580 pump, an ASI-100 automated injector, a STH column oven and  
183 a UVD340S diode array detector and a Jupiter Proteo (250 x 4.6 i.d., 4  $\mu$ m particle  
184 size) column equipped with Security Guard Analytical Guard cartridge system KJ0-  
185 4282 with C12 4 x 3.0 mm cartridge (Phenomenex, Le Pecq, France). The mobile  
186 phases were water 0.1% TFA (solvent A) and acetonitrile 0.09% TFA (solvent B).  
187 The water/acetonitrile was set as follows: the starting composition was a mix solvent  
188 A/solvent B (85:15, v/v). It was raised to 45% (v/v) acetonitrile in 30 min by applying a  
189 linear gradient. Flow rate was 1 mL/min. UV detection was fixed at  $\lambda = 220$  nm. The  
190 temperature of the column oven was set at 40°C. All of the chromatographic data  
191 management was ensured by the Chromeleon software 6.0.1 version (Dionex).

192 Dirucotide retention time was about 21 min, and critical impurities retention time were  
193 20, 20.5 and 22.3 min (respectively impurities C, A and B, see figure 3). Purities are  
194 expressed directly on the basis of UV absorbance of dirucotide and impurities on the  
195 final pooled fractions.

196

197 *Insert here figure 3*

198

199

200

### 201 2.7. HPLC fractogram construction

202 A fixed volume of each fraction (10  $\mu$ L) was analyzed by HPLC, following the protocol  
203 described section 2.6. Area under the curve (AUC) of each peak was plotted per time  
204 to render the the HPLC fractogram.

205

## 206 3. Results and Discussion

207 Dirucotide is assembled by solid phase peptide synthesis starting from preloaded  
208 Fmoc-Thr(tBu)-Wang resin and carrying out suitably protected amino acids for  
209 Fmoc/tBu synthesis strategy (see electronic supplementary material for the complete  
210 protocol). This solid phase synthesis of dirucotide generates peptidic impurities  
211 (figure 3) and their level has to meet the final API specifications after purification.  
212 Some impurities are critical if they partially co-elute with the main product or if they  
213 have a significant impact on the purification yield. Therefore, various purification  
214 processes such as elution or displacement CPC were considered, in which different  
215 interactions between analytes and the stationary phase may occur. The first step of  
216 this study was the selection of the more suitable chromatographic mode, namely  
217 elution or displacement. Some biphasic solvent systems are already known for their  
218 efficiency in elution mode peptide purification. These systems are compatible with  
219 free and protected peptides.[7] Regarding the purification of dirucotide, only the  
220 MtBE/CH<sub>3</sub>CN/*n*-BuOH/water (2:1:2:5, v/v) system fulfilled both solubility and  
221 dirucotide partition coefficient criteria, the latter being evaluated by using the shake  
222 flask procedure and ninhydrin reagent for TLC visualization.

Formatted: Centered

223 As previously published, IX-CPC can be considered as a potentially effective  
224 alternative to the elution mode for the preparative purification of small unprotected  
225 peptides. [18,19] Indeed, this method was successfully applied to free dipeptide  
226 purification [9] or capture and we proposed here to extend its scope to longer  
227 peptides, such as the 17-aminoacid dirucotide. In this work, the aim is to evaluate the  
228 interest of the technique for the purification of a large peptide, (*i.e.* a synthetic 17  
229 amino-acid peptide).

230 Dirucotide isoelectric point is 7.5 and 7 cationic positions are generated in the  
231 presence of DEHPA. These sites allow electrostatic interactions to take place  
232 between dirucotide and anionic phosphate groups of the exchanger. The operating  
233 conditions were adapted from our previous work on dipeptides.[18] They include  
234 MtBE/CH<sub>3</sub>CN/*n*-BuOH/water (2:1:2:5, v/v) as solvent system, DEHPA as exchanger,  
235 TEA as DEHPA activator and Ca<sup>2+</sup> (CaCl<sub>2</sub> in water) as strong displacer. The  
236 [DEHPA]/[TEA] and [DEHPA]/[CaCl<sub>2</sub>] ratios were respectively 46.5 and 10.4 and  
237 calculated on the basis of the optimal experimental conditions that were previously  
238 reported (Table 1).[18]

239 In IX-CPC, the exchanger/analyte ratio plays an important role, especially in the case  
240 of peptides, because they may own many ionization sites. In our previous work, we  
241 demonstrated that a exchanger/(ionized sites of the analytes) ratio comprised  
242 between 5 and 30, depending on the chemical structure of the analyte, provide a  
243 good separation.[9,10] Thus, a mole ratio  $n_{\text{DEHPA}}/n_{\text{dirucotide}}$  of 100, corresponding to a  
244 ratio  $n_{\text{DEHPA}}/n_{\text{(positive charges of the analyte)}}$  ratio of about 25 was initially tested (Table 1).  
245 The injected mass was set at 200 mg in preliminary purification tests. The displacer  
246 (Ca<sup>2+</sup>) containing mobile phase was pumped 5 min after column equilibration. Indeed,  
247 a washing step is generally applied at the beginning of the IXCPC run by pumping

248 the aqueous mobile phase without displacer for several minutes. The hydrophilic  
249 non-ionic compounds are thus eluted before the displacement process. In our case, a  
250 shortened washing step (only 5 min) is made possible by the quite high purity of the  
251 crude sample (84 %) and the chemical nature of the impurities, which are all retained  
252 by the exchanger. Only few impurities are eluted during this washing step (without  
253 any displacer intervention). Experimental conditions are reported in Table 1. The  
254 CPC chromatogram and HPLC fractogram that were obtained in these operating  
255 conditions are shown in figure 4.

256

257 *Insert here figure 4*

258

259 The dirucotide purity was improved to 98 % (Table 1) without any chemical  
260 degradation and critical impurities were removed by the IX-CPC process. However,  
261 after injecting 200 mg of crude extract, a poor dirucotide recovery was obtained (48  
262 %). The same operating conditions - DEHPA/dirucotide molar ratio = 100  
263 (DEHPA/(positive charges of the analyte) = 25), a [DEHPA]/[CaCl<sub>2</sub>] = 10.4, and  
264 [DEHPA]/ [TEA] = 46.5 - were applied for the purification of 402 mg and 1.0 g of  
265 dirucotide crude extract.

266 As shown in Table 1, dirucotide purity was about 98 % in all runs and as expected,  
267 the recovery was improved from 48 % to 69 % when increasing the injected mass  
268 from 200 mg to 1 g.

269 The positive impact of mass overloading was confirmed by the HPLC fractogram of  
270 the 400 mg and 1 g runs (see figure 5).

271

272 *Insert here figure 5*

273

274 The isotachic train organization was clearly improved when the injected sample mass  
275 was increased while keeping the concentration constant, as usually observed in  
276 displacement chromatography. [20,22] Indeed, the dirucotide emergence profile  
277 became more and more rectangular-shaped while the compressive aspect of the  
278 shock layers remained constant despite of the mass overloading, thus leading to an  
279 increase of the pure dirucotide zone and therefore to a recovery improvement.

280 Another specificity of the displacement mode, observed on ~~the~~ figures 64 and 5, is  
281 that the impurities accumulated in the shock layers because they were not  
282 concentrated enough to form a complete rectangular eluting zone, as dirucotide did.  
283 The resulting productivity was about 2.29 g per liter of stationary phase and per hour.  
284 This productivity is indicative since the limited availability of the starting material did  
285 not permit further study on the impact of the mass overload. Moreover, the mobile  
286 phase consumption is of 180 L per kg of starting material, knowing that the mobile  
287 phase consists of 90 % water. This consumption should be easily reduced by  
288 increasing the amount of starting material injected per run.

289

## 290 **Conclusion**

291 The IX-CPC process, initially applied to dipeptide purification, succeeded to purify  
292 dirucotide, a 17-aminoacid peptide, thus demonstrating its versatility. The high purity  
293 and recovery (98 % and 69 % respectively) of purified dirucotide confirmed the high  
294 selectivity of IX-CPC, since most of critical impurities were eliminated, even though  
295 they are usually co-eluted with dirucotide in classical chromatographic separations.  
296 Thus, IX-CPC revealed itself as an inexpensive, efficient and easy-to-implement  
297 process for peptidic API polishing.

298

## 299 **Acknowledgment**

300 We are grateful to Dr. Karen Plé (UMR 7312, University of Reims Champagne-  
301 Ardenne) for linguistic improvement of this manuscript. Leslie Boudesocque thank  
302 the University of Reims Champagne-Ardenne, the CNRS and the “Ministère de  
303 l’Enseignement Supérieur et de la Recherche” for financial support.

304

305

## 306 **References**

307 [1] R. Ransohoff, D. Hafler, C. Lucchinetti, Multiple sclerosis-a quiet revolution, Nat.  
308 Rev. Neurol. 11 (2015) 134-142.

309 [2] R. Totaro, C. Di Carmine, C. Marini, A. Carolei, Multiple sclerosis: new treatment  
310 modalities, Ind. J. med. Res. 142 (2015) 647-54.

311 [3] J.A. Cohen, Emerging therapies for relapsing multiple sclerosis, Arch. Neurol. 66  
312 (2009) 821-828.

313 [4] P.S. Giacomini, A. Bar-Or, Antigen-specific therapies in multiple sclerosis, Expert  
314 Opin Emerg Drugs 14 (2009) 551-560.

315 [5] G. Comi, Disease-modifying treatments for progressive multiple sclerosis, Mult.  
316 Scler. J. 19 (2013) 1428-1436.

317 [6] E. Loo, M. Krantz, B. , Babita, High dose antigen treatment with a peptide epitope  
318 of myelin basic protein  
319 modulates T cells in multiple sclerosis patients, Cell. Immunol. 280 (2012) 10-15.

320 [7] K.M. Galetta, L.S. Talman, K.E. Cello, T. Verco, S. Jones, P.A. Calabresi, S.L.  
321 Galetta, J.S. Werner, J.L. Keltner, L.J. Balcer, C.E. Markowitz,

322 Optical Coherence Tomography (OCT) Measurements and Visual Function Tests in  
323 a Secondary Progressive MS Trial of the Compound Dirucotide, *Neurology* 74 (2009)  
324 A310.

325 [8] A.J.P. Foucault (A.J.P. Foucault), *Centrifugal Partition Chromatography*, Marcel  
326 Dekker, New York, 1995.

327 [9] A. Berthod (Ed.), *Countercurrent Chromatography, The Support-Free Liquid*  
328 *Stationary Phase*, *Comprehensive Analytical Chemistry*, vol. 38, Elsevier,  
329 Amsterdam, 2002.

330 [10] M. Knight, M.O. Fagarasan, K. Takahashi, A.Z. Gebblaoui, Y. Ma, Y. Ito,  
331 Separation and purification of peptides by high-speed countercurrent  
332 chromatography, *J. Chromatogr. A* 702 (1995) 207-214.

333 [11] Y. Ma, Y. Ito,  
334 Recent advances in peptide separation by countercurrent chromatography, *Anal.*  
335 *Chim. Acta* 352 (1997) 411-427.

336 [12] M. J. Knight, Separations of hydrophobic synthetic peptides in counter-current  
337 chromatography, *Chromatogr. A* 1151 (2007) 148-152.

338 [13] Y. Ito, Y. Ma, pH-Zone-refining counter-current chromatography: a displacement  
339 mode applied to separation of dinitrophenyl amino acids, *J. Chromatogr. A* 672  
340 (1994) 101-108.

341 [14] Y. Ma, Y. Ito, Separation of peptide derivatives by pH-zone-refining counter-  
342 current chromatography, *J. Chromatogr. A* 702 (1995) 197-206.

343 [15] Y. Ma, Y. Ito, Y. Peptide separation by pH-zone-refining countercurrent  
344 chromatography, *J. Chromatogr. A* 771 (1997) 81-88.

345 [16] S.M. Cramer, G. Subramanian, Recent advances in the theory and practice of  
346 displacement chromatography, *Separ. Purif. Meth.* 19 (1990) 31-91.

347 [17] A. Maciuk, J.-H. Renault, R. Margraff, P. Trebuchet, M. Zeches-Hanrot, J.-M.  
348 Nuzillard, Anion-exchange displacement centrifugal partition chromatography, Anal.  
349 Chem. 76 (2004) 6179-6186.

350 [18] L. Boudesocque, P. Lameiras, N. Amarouche, M. Giraud, F. Quattrini, J. Mc  
351 Garrity, J.-M. Nuzillard, J.-H. Renault, Ion-exchange centrifugal partition  
352 chromatography: A methodological approach for peptide separation, J. Chromatogr.  
353 A 1236 (2011) 115-122.

354 [19] L. Boudesocque, R. Kapel, P. Dulsther, I. Marc, J.-H. Renault, Concentration  
355 and selective fractionation of an antihypertensive peptide from an alfalfa white  
356 proteins hydrolysate by mixed ion-exchange centrifugal partition chromatography, J.  
357 Chromatogr. B 905 (2012) 23-30.

358 [20] A. Toribio, J.-M. Nuzillard, J.-H. Renault, Strong ion-exchange centrifugal  
359 partition chromatography as an efficient method for the large-scale purification of  
360 glucosinolates, J. Chromatogr. A 1170 (2007) 44-51.

361 [21] M. Hamzaoui, J. Hubert, L. Marchal, A. Foucalt, J.-H. Renault, J. Hubert,  
362 Strong ion exchange in centrifugal partition extraction (SIX-CPE): Effect of partition  
363 cell design and dimensions on purification process efficiency, J. Chromatogr. A 1247  
364 (2012) 18-25.

365 [22] J.-H. Renault, G. Le Crouerour, P. Thépenier, J.-M. Nuzillard, M. Zèches-Hanrot,  
366 L. Le Men-Olivier, Isolation of indole alkaloids from *Catharanthus roseus* by  
367 centrifugal partition chromatography in the pH-zone refining mode, J. Chromatogr. A  
368 849 (1999) 421-431.

369

370

371 |



372

373

374

375 **CAPTIONS**

376 Figure 1: The chemical structure of dirucotide.

377 Figure 2: Schematic description of the IX-CPC process, DM: descending mode,

378 AMP: aqueous mobile phase, OSP: organic stationary phase, OUP: organic upper

379 phase, ALP: aqueous lower phase

380 Figure 3: HPLC chromatogram of crude synthetic dirucotide (main peak) showing the

381 main critical impurities (arrows) at  $rt = 20, 20.5$  and  $22.3$  min, respectively impurities

382 C, A and B.

383 Figure 4. A- CPC chromatogram of the purification of 197 mg of dirucotide; B-

384 corresponding HPLC fractogram; C- HPLC analysis of dirucotide before and after

385 CPC purification.

386 Figure 5. HPLC fractograms of dirucotide purification by IX-CPC showing the positive

387 impact of mass-overloading (increase of the compressive aspect of the shock layers

388 and of the “length” of the purified dirucotide zone.

389 Table 1. Experimental conditions and experimental results

390

391

392

393

394

395

396

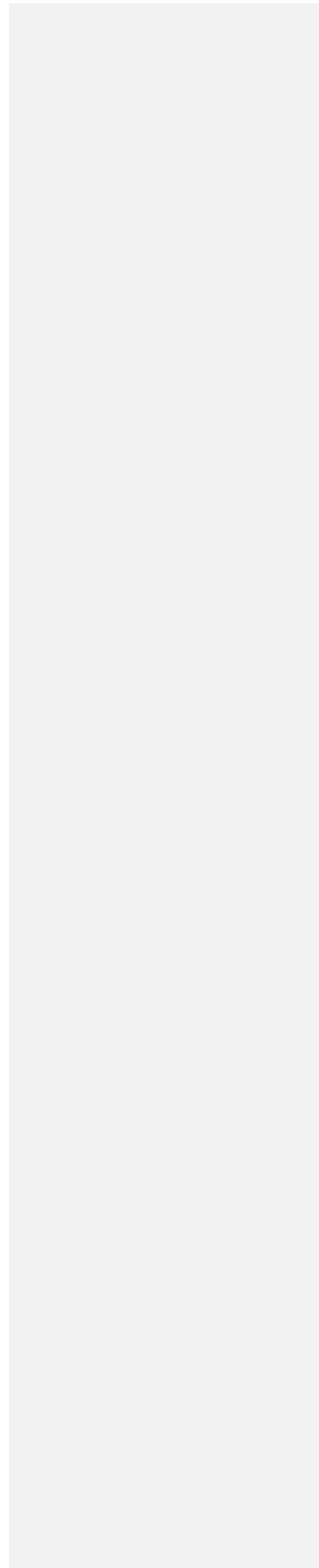
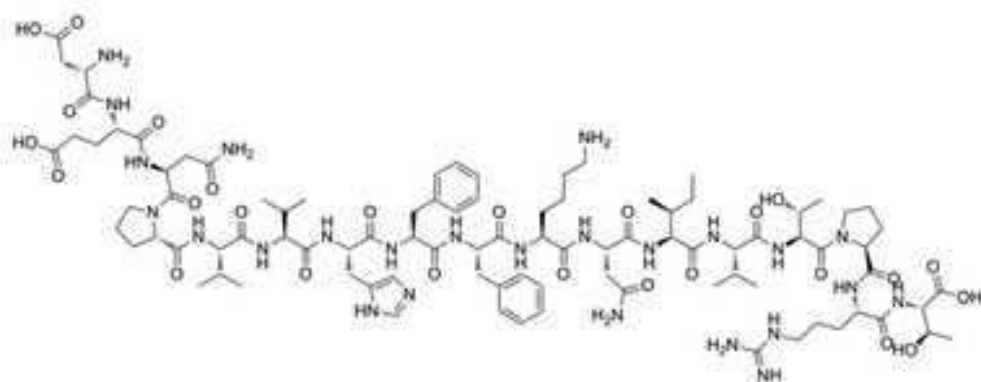


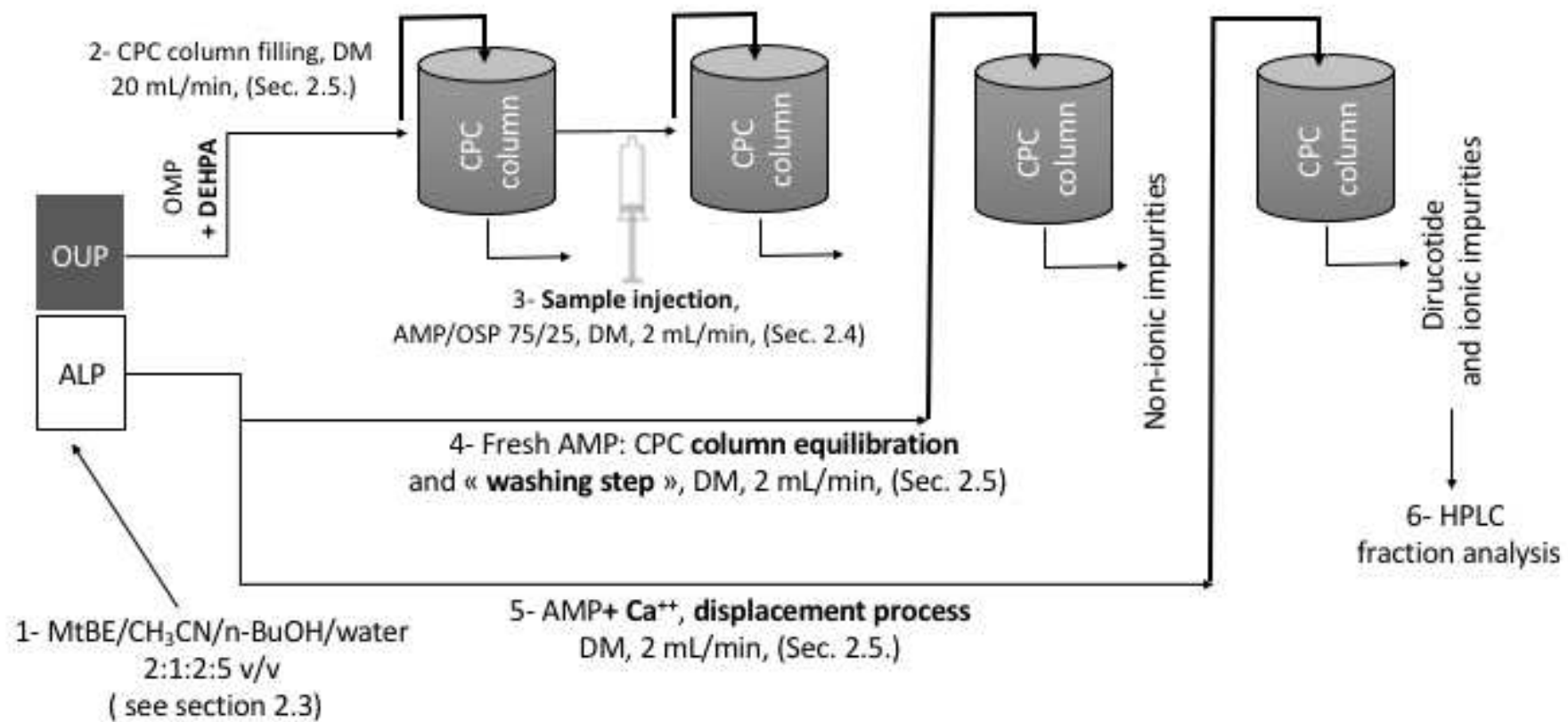
Figure  
[Click here to download high resolution image](#)

Fig 1



Figure

[Click here to download high resolution image](#)



Figure

[Click here to download high resolution image](#)

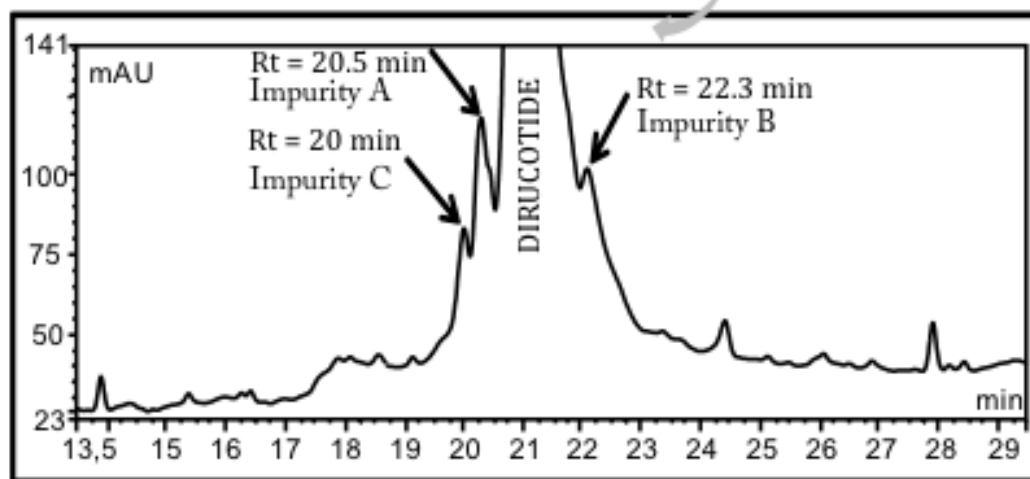
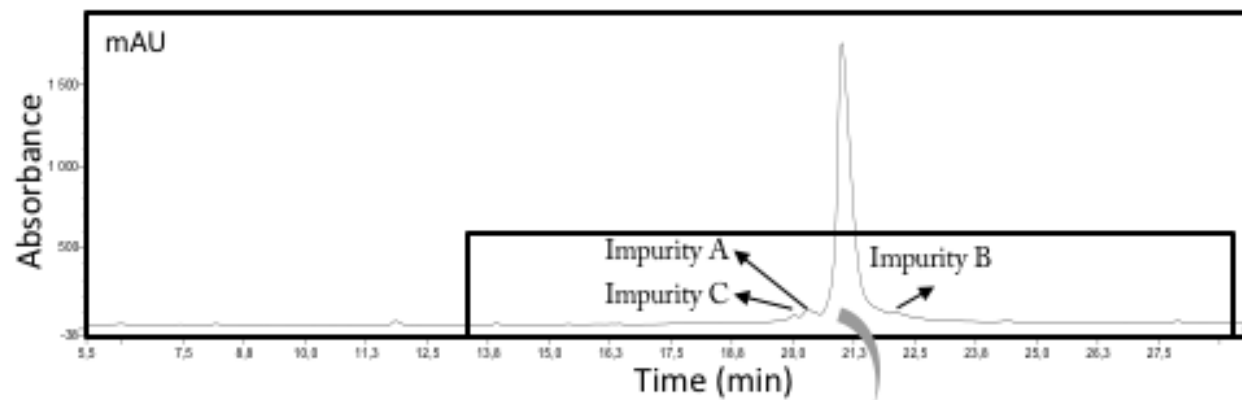


Fig. 4

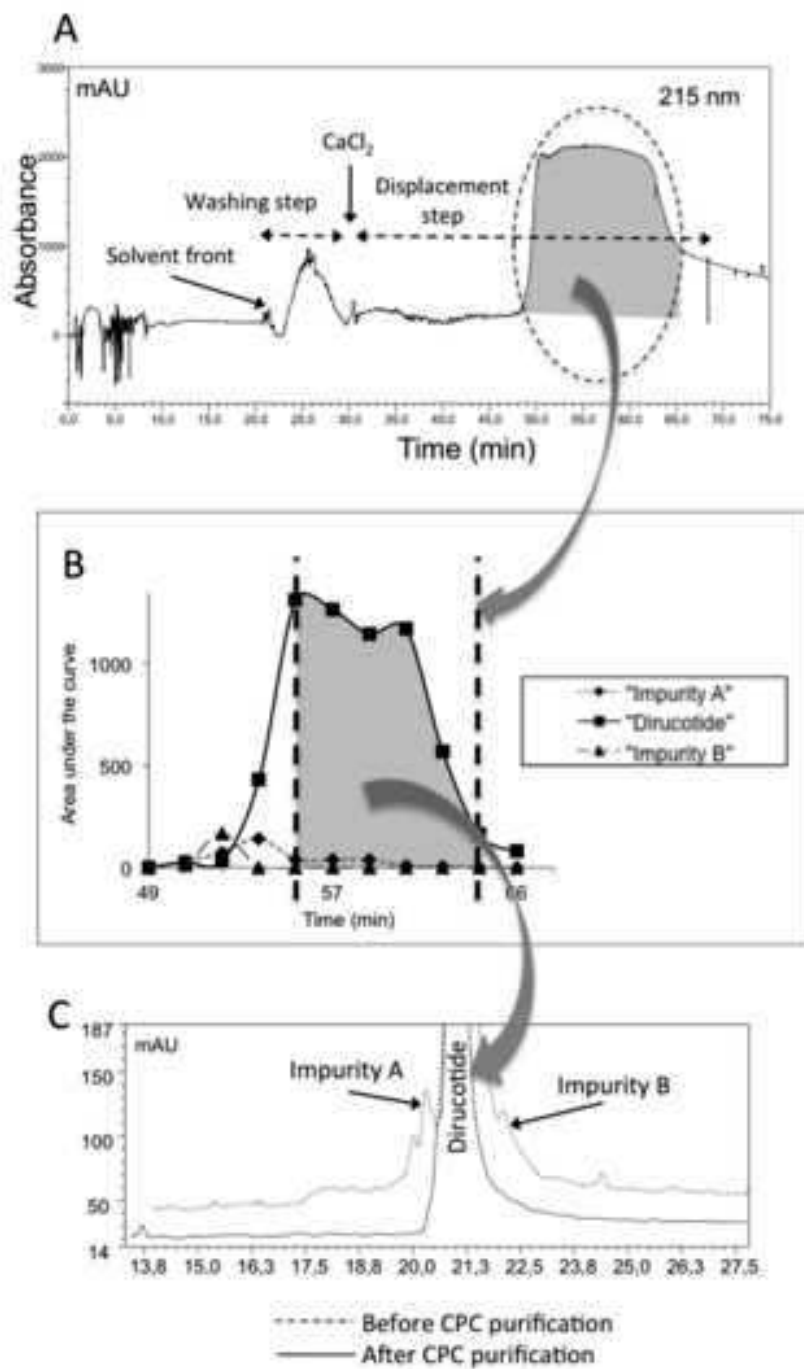


Figure  
Click here to download high resolution image

Fig. 5

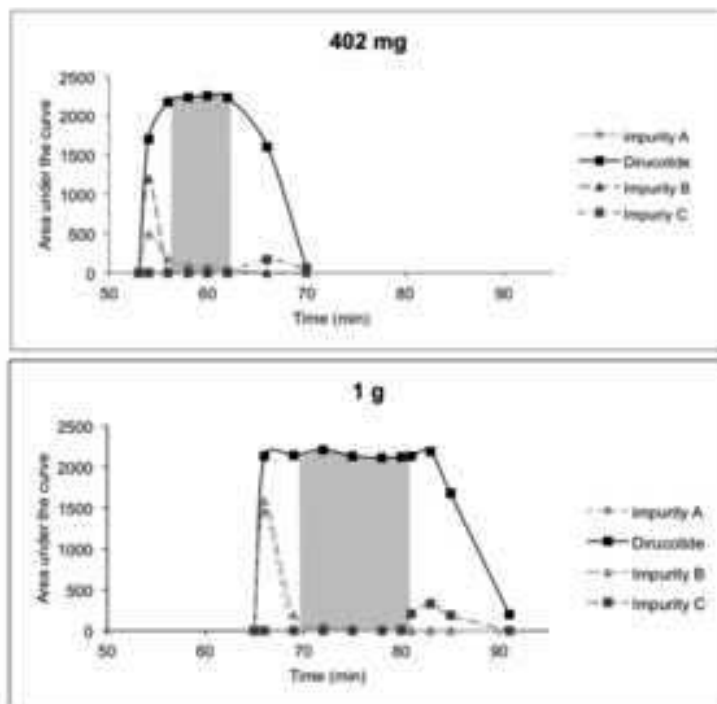


Table 1

EXPERIMENTAL CONDITIONS			
Injection mass (mg)	197	402	1000
Solvent system	MtBE/acetonitrile/ <i>n</i> -BuOH/water (2:1:2:5, v/v)		
Operating mode	Descending (aqueous phase as mobile phase)		
Exchanger (DEHPA) concentration (mM)	60	120	300
$n_{\text{DEHPA}}$ /dirucotide	100	100	100
Displacer (CaCl <sub>2</sub> ) concentration (mM)	5.76	11.5	28.8
Rotation speed (rpm)	1200		
Back pressure (bars)	35	35	30
Flow rate (mL.min <sup>-1</sup> )	2		
Stationary phase retention (%)	79	77	75
EXPERIMENTAL RESULTS			
Purified dirucotide (mg)	80	204.1	586.9
Dirucotide recovery (%)	48	60	69
Dirucotide purity (%)	98	98	98
Productivity (mg/h)	44	113.4	352.1