



HAL
open science

Implementing Precision Antimicrobial Therapy for the Treatment of Bovine Respiratory Disease: Current Limitations and Perspectives.

Guillaume Lhermie, Pierre-Louis Toutain, Farid El Garch, Alain Bousquet-mélou, Sébastien Assie

► To cite this version:

Guillaume Lhermie, Pierre-Louis Toutain, Farid El Garch, Alain Bousquet-mélou, Sébastien Assie. Implementing Precision Antimicrobial Therapy for the Treatment of Bovine Respiratory Disease: Current Limitations and Perspectives.. *Frontiers in Veterinary Science*, 2017, 4, pp.143. 10.3389/fvets.2017.00143 . hal-01608694

HAL Id: hal-01608694

<https://hal.science/hal-01608694>

Submitted on 25 May 2020

HAL is a multi-disciplinary open access archive for the deposit and dissemination of scientific research documents, whether they are published or not. The documents may come from teaching and research institutions in France or abroad, or from public or private research centers.

L'archive ouverte pluridisciplinaire **HAL**, est destinée au dépôt et à la diffusion de documents scientifiques de niveau recherche, publiés ou non, émanant des établissements d'enseignement et de recherche français ou étrangers, des laboratoires publics ou privés.

See discussions, stats, and author profiles for this publication at: <https://www.researchgate.net/publication/319339988>

Implementing Precision Antimicrobial Therapy for the Treatment of Bovine Respiratory Disease: Current Limitations and...

Article · August 2017

DOI: 10.3389/fvets.2017.00143

CITATIONS

0

5 authors, including:



Guillaume Lhermie

Cornell University

14 PUBLICATIONS 18 CITATIONS

[SEE PROFILE](#)



Pierre-Louis Toutain

École Nationale Vétérinaire de Toulouse

375 PUBLICATIONS 6,723 CITATIONS

[SEE PROFILE](#)



Alain Bousquet-Melou

École Nationale Vétérinaire de Toulouse

115 PUBLICATIONS 2,251 CITATIONS

[SEE PROFILE](#)



Sébastien Assié

École Nationale Vétérinaire, Agroalimentaire ...

41 PUBLICATIONS 252 CITATIONS

[SEE PROFILE](#)

Some of the authors of this publication are also working on these related projects:



2 years postdoc position in Statistics for the PigletDetect project [View project](#)



Pharmacology of the tetracyclines [View project](#)



Implementing Precision Antimicrobial Therapy for the Treatment of Bovine Respiratory Disease: Current Limitations and Perspectives

Guillaume Lhermie^{1*}, Pierre-Louis Toutain^{2,3}, Farid El Garch⁴, Alain Bousquet-Mélou^{2,3} and Sébastien Assié⁵

¹ Department of Population Medicine and Diagnostic Science, College of Veterinary Medicine, Cornell University, Ithaca, NY, United States, ² INRA, UMR1331 TOXALIM, Toulouse, France, ³ Université de Toulouse, INPT, ENVT, EIP, UPS, Toulouse, France, ⁴ Vétocin, Global Drug Development, Lure, France, ⁵ INRA, UMR1300 Biologie, Epidémiologie et Analyse de Risque en santé animale BioEpAR, Nantes, France

OPEN ACCESS

Edited by:

Lloyd Reeve-Johnson,
University of the Sunshine
Coast, Australia

Reviewed by:

Nora Mestorino,
National University of La Plata,
Argentina

Maria Aranzazu Martinez,
Complutense University
of Madrid, Spain

*Correspondence:

Guillaume Lhermie
gl467@cornell.edu

Specialty section:

This article was submitted
to Veterinary Pharmacology
and Toxicology,
a section of the journal
Frontiers in Veterinary Science

Received: 07 July 2017

Accepted: 16 August 2017

Published: 29 August 2017

Citation:

Lhermie G, Toutain P-L, El Garch F, Bousquet-Mélou A and Assié S (2017) Implementing Precision Antimicrobial Therapy for the Treatment of Bovine Respiratory Disease: Current Limitations and Perspectives. *Front. Vet. Sci.* 4:143. doi: 10.3389/fvets.2017.00143

The therapeutic efficacy of an early treatment protocol with an infection-stage adjusted fluoroquinolone regimen was evaluated in a field study on young bulls (YBs) presenting signs of bovine respiratory disease (BRD). A total of 195 YB (Charolais, Limousin, and Rouge-des-Prés breeds) from 6 farms implementing or not prophylactic antimicrobial treatments (PROPHY or absence) were randomly assigned to 1 of 2 experiment groups based on time of detection of BRD and first-line marbofloxacin regimen, early adjusted dose [Early 2 (E2)] or late standard dose [Late 10 (L10)]. Each YB was administered orally a reticulo-rumen bolus, allowing continuous monitoring of ruminal temperature. In the E2 group, YB presenting early signs of BRD, i.e., an increase in ruminal temperature over 40.2°C and persisting more than 12 h, confirmed by a clinical examination showing no or mild signs of BRD, were given 2 mg/kg of marbofloxacin. In the L10 group, YBs presenting moderate or severe signs of BRD at visual inspection, confirmed at clinical examination, were given 10 mg/kg of marbofloxacin. If needed, YBs were given a relapse treatment. The YBs were followed for 30 days. The proportions of first and relapse treatments were calculated, as well as the therapeutic efficacy at day 10. In the E2 group, the first-line treatments' proportion was significantly higher ($P < 0.05$), while the relapse treatments' proportion tended to be higher ($P = 0.08$), than in the L10 group. Evolution of clinical scores (CSs) of diseased YB was followed for 10 days. In both groups, CS and rectal temperature decreased significantly 24 h after treatment ($P < 0.05$). Treatment incidences (TI) representing antimicrobial consumption assessed on used daily doses (UDD) were calculated. Antimicrobial consumption of marbofloxacin and relapse treatments were not significantly different between the groups. These values were strongly influenced by the recourse to a prophylactic antimicrobial treatment, accounting for more than 90% of the antimicrobial amount in the herds implementing prophylaxis. The higher number of treatments in the groups treated on the basis of ruminal temperature monitoring, the accuracy of the detection method, and the necessary conditions to implement precision antimicrobial therapy in the field are discussed in this article.

Keywords: antimicrobial use, decreased regimen, early treatment, fluoroquinolone, cattle, bovine respiratory disease complex, veterinary precision medicine

INTRODUCTION

Antimicrobial use (AMU) in veterinary medicine may lead to the selection of resistant bacteria, potentially transferred to humans, representing a public health hazard (1, 2). Given the necessity of maintaining available antimicrobials, the context of sustainable use—as little as possible, and as much as necessary—represents a driver for new approaches of antimicrobial therapy in veterinary medicine (3–5).

In food producing animals, the treatment of bovine respiratory diseases (BRD) represents one of the major uses of antimicrobials (6). Because of the high prevalence of bacteria as involved pathogens, treatment of BRD generally includes an empirical antimicrobial drug (AMD) therapy, applied with a wide variety of classes; among them the most frequently used are penicillins, tetracyclines, macrolides, and quinolones (7). Current practices of treatment of BRD consist of (i) treating the entire cohort of animals before the onset of BRD (prophylactic treatment) and (ii) treating the entire cohort of animals in which only a small number of animals expresses clinical signs (metaphylactic treatment or control) (8). The advantages of these mass medication strategies are the control of the infection dissemination and a good survival rate with regards to the group, promoting the prevention and/or delay of BRD in the group. However, such strategies also have the disadvantage of subjecting a potentially large proportion of animals to AMDs potentially able to contaminate the food chain and/or the environment with antimicrobial resistance (AMR) determinants (bacteria and genes). The other therapeutic approach to treat BRD focuses on (iii) curative treatments of only the animals presenting clinical signs of illness (9–11). This approach limits the number of animals exposed to antimicrobials. However, it is usually seen as the “late approach,” and delay in treatment initiation may impact animal welfare, as the clinical signs possibly reflect extensive pulmonary damage which had time to develop prior to treatment (6). Furthermore, in this late approach, dosages of antimicrobials needed to achieve bacterial cure are generally high. Considering the uncertainty regarding the causal agent and time of disease onset, labeled doses are determined by pharmacokinetic/pharmacodynamic (PK/PD) and dose determination experiments. These doses generally target a cluster of pathogens and consider the highest minimal inhibiting concentration reported (12, 13). These conditions lead then to routine use of a “high” antimicrobial dose.

Recent studies have stressed the interests of early therapeutic interventions, when the infectious bacterial load is still low, suggesting that the dose of antibiotics may be modulated concurrently with the infectious bacterial load. A relation between the size of bacterial inoculum and the antibiotic dose needed to achieve bacterial elimination was first discovered by Eagle in 1949 (14). Since then, this so-called “Eagle effect” or “inoculum effect” has been observed in experimental models of infections, showing that the antimicrobial activity of fluoroquinolones or beta-lactams, including third-generation cephalosporins, could be reduced against high bacterial loads compared to low bacterial loads of different bacterial species, including *Escherichia coli*, *Pasteurella multocida*, *Klebsiella pneumoniae*, and *Staphylococcus aureus* (12, 13, 15–17). In a calf experimental model of BRD, we

observed high bactericidal activity of an adjusted marbofloxacin dose administered “early” on low inoculum of *Mannheimia haemolytica* compared with a late administration, even at a fivefold higher dose (18). However, the lack of diagnostic tools allowing identification of pathogens and bacterial load in field conditions constitutes a major barrier to implement such an early treatment strategy. An alternative could be to monitor early signs of BRD, such as increase in core body temperature, which has been demonstrated to appear before clinical signs (19, 20). Combining appropriate doses of AMD and early detection of BRD could thus result in a reduction in AMU.

The objective of our study was to assess in a field experiment the therapeutic effectiveness of an infection-stage adjusted antimicrobial therapy given at the early stage of BRD, compared to a standard therapy, i.e., a single injection of 10 mg/kg marbofloxacin administered after observation of clinical signs, as recommended by the manufacturer.

MATERIALS AND METHODS

Study Design

The research protocol was compliant with the European Guideline on Good Clinical Practice (CVMP/VICH/595/98-FINAL) and has been submitted to the French National Food Safety Agency, under the reference ENR/KLD/EC-00710-0. All procedures were performed in accordance with the European Directive (2010/63/EU) and French Regulations (Decree no. 2013-118; articles R214-87 and R214-137 from Rural Code) related to the Care and Use of Laboratory Animals. However, because all the procedures involving animals were conducted in commercial farms, and therefore do not fall under the scope of the European Directive (2010/63/EU) on the protection of animals used for scientific purposes (article 1-5), ethics committees established under the French Regulations do not examine approvals of such protocols. The study was conducted in western France from December 2014 to March 2015. In 6 commercial fattening units, 195 ruminant young bulls (YBs) of Charolais, Limousin, and Rouge-des-Prés breeds, aged between 7 and 10 months and with an average body weight of 299 kg were recruited (Table 1). Before their arrival at the fattening unit, YBs were transported over a distance less than 500 km from their birth farm to the sorting facility place. YBs were given eprinomectin Pour-On (Eprinex, Merial, Villeurbanne, France) and were also administered orally a reticulo-rumen temperature bolus (San'phone, Medria SAS, Chateaugiron, France). YBs were then transported by truck for travel distance less than 50 km to the fattening unit. At the time of arrival, YBs were separated into pens containing 7–12 animals. In the six fattening units, each pen was randomly assigned to one of the two experiment groups, Early 2 (E2) and Late 10 (L10), characterized by the different methods of detection of BRD and curative antimicrobials treatment regimens. In 3 fattening units, considered at high risk of BRD occurrence, a prophylactic antimicrobial treatment (PROPHY) was administered to each YB, at the sorting facility. Overall, four groups of animals were studied: PROPHY-E2, PROPHY-L10, E2, and L10. YBs were housed in straw-bedded barns facilities and had free access to water and

TABLE 1 | Characteristics of the herds, number of young bulls (YBs) per group, and proportion of antimicrobial treatments.

Group	Herd	Mean live weight at arrival (kg ± SD)	Antibiotic used for relapse	Number of YBs	Number of bulls with 1 curative treatment	Number of bulls with 2 curative treatments		Proportion of first-line treatment	Proportion of relapse treatment
PROPHY-E2	A	343 ± 19	Flor	10	4	2		60	20
	B	278 ± 30	Flor	21	10	4		67	19
	C	361 ± 21	Flor	20	9	1		50	5
							Mean	59	15
							SD	6	6
PROPHY-L10	A	349 ± 21	Flor	20	5	1		30	5
	B	293 ± 45	Flor	35	2	0		6	0
	C	364 ± 18	Flor	24	3	0		13	0
							Mean	16	2
							SD	9	2
E2	D	286 ± 11	Tula	14	8	3		79	21
	E	248 ± 10	Tula	6	2	1		50	17
	F	273 ± 11	Tula	13	4	2		46	15
							Mean	58	18
							SD	14	2
L10	D	281 ± 16	Tula	7	3	0		43	0
	E	232 ± 21	Tula	15	10	1		73	7
	F	262 ± 9	Tula	8	0	0		0	0
							Mean	39	2
							SD	26	3

Two out of the 195 YBs were excluded from the study, one for severe signs of lameness 3 days after the start of the study and another with abnormal behavior. In the E2 groups, YBs were given 2 mg/kg of marbofloxacin; in the L10 groups, YBs were given 10 mg/kg of marbofloxacin; YBs from PROPHY-E2 and PROPHY-L10 were given in addition 4 mg/kg bw of tildipirosin at the sorting facility.

Flor, florfenicol; Tula, tulathromycin; E2, Early 2; L10, Late 10.

food. Enrollment of the YB started on the first day on feed and lasted 30 days.

BRD Detection and Inclusion Criteria

In the L10 groups, detection of BRD in YB was only based on visual inspection of undisturbed animals followed by clinical examination in case of discomfort signs. A validated grid developed by Torres et al. (21) to perform visual inspection was used. Briefly, a YB presenting clinical signs of BRD after a veterinary physical examination, such as moderate or severe signs of depression, nasal discharge, cough, and increased respiratory efforts at visual inspection, was considered as late detected if also presenting a rectal temperature $\geq 39.7^{\circ}\text{C}$, and included in the study.

In the E2 groups, BRD detection was based on the combination of ruminal temperature continuous monitoring and veterinary clinical examination. Ruminal temperatures of YB were recorded for 30 days after their arrival at the farm, as described by Timsit et al. (20). Briefly, the rumen temperature was recorded every 5 min by the temperature bolus. Data extracted were analyzed by the program provided by the manufacturer and represented graphically by a curve showing ruminal temperature as function of time. The curves were observed three times daily by a veterinarian. If an increase of ruminal temperature over a threshold of 40.2°C and persisting more than 12 h was observed, a clinical examination of the suspected animal was performed within 12 h. Upon examination, YB with a rectal temperature $\geq 39.7^{\circ}\text{C}$ and no or mild other clinical signs of BRD (normal demeanor; respiratory rate < 60 ; heart rate < 100 , no or mild nasal discharge; normal respiration; normal or slightly decreased appetite) were considered as early detected and included. A YB with a rectal temperature $< 39.7^{\circ}\text{C}$ at the time of examination was considered as not detected.

Young bulls presenting clinical signs differing from respiratory disease signs (e.g., lameness and diarrhea) were excluded from the study.

Clinical Follow-up

In case of detection of disease, rectal temperature of the YB was recorded, and a complete clinical examination was performed at the time of first-line treatment (day 0) and at days 1, 2, 3, 7, 10, and 21 after treatment. YBs were monitored using a scoring system adapted from Dowling et al. (22). Scores were assigned as follows: demeanor from 0 to 3 (normal, dull, depressed, and recumbent); rectal temperature from 0 to 2 (< 39.5 , $39.5\text{--}40.5$, > 40.5); respiratory rate from 0 to 3 (< 45 , $45\text{--}60$, $60\text{--}90$, > 90); heart rate from 0 to 2 (< 80 , $80\text{--}100$, > 100); nasal discharge from 0 to 3 (absent, mild, moderate, and profuse); respiration from 0 to 2 (normal, increased effort, and labored); appetite from 0 to 2 (normal, decrease, and anorexic). The clinical score (CS) was calculated daily for each YB by adding the values given for each parameter.

At days 1, 2, and 3, YBs presenting an increase in their CS compared to day 0 or an increase $> 0.5^{\circ}\text{C}$ in their rectal temperature measured at day 0 were given a relapse treatment (see later). From day 4 to the end of the study, a YB already treated and presenting moderate to severe clinical signs of BRD was also given a relapse treatment.

Evolution of CS of diseased YB was followed for 10 days and evaluated as a function of time.

Antimicrobial Treatments

Prophylactic Treatments

A prophylactic subcutaneous treatment of 4 mg/kg body weight tildipirosin (Zuprevo, MSD, Beaucauze, France) was administered

at the auction market place the day before entering the farm to each YB from herds A, B, and C (PROPHY). In YB from herds D, E, and F, no prophylactic treatment was implemented.

First-line Treatments

In the L10 groups, animals identified after clinical examination as late detected were immediately given a single intramuscular dose of 10 mg/kg marbofloxacin (Forcyl, Vetoquinol, Lure, France), as recommended in the summary of product characteristics (SPC). For welfare issues, a single intramuscular dose of 2 mg/kg tolfenamic acid, a non-steroidal anti-inflammatory drug (Tolfine, Vetoquinol, Lure, France), was simultaneously administered. It was shown in ruminants that a simultaneous injection of tolfenamic acid did not affect the marbofloxacin pharmacokinetic profile (23).

In the E2 groups, animals identified after clinical examination as early detected were immediately given a single intramuscular dose of 2 mg/kg marbofloxacin (Marbocyl, Vetoquinol, Lure, France) and a single intramuscular dose of 2 mg/kg tolfenamic acid.

Relapse Treatments

During the study period, YB received when needed a relapse treatment. According to the farmers' customary practices, the relapse treatment was a single subcutaneous injection of 40 mg/kg of florfenicol (Fenflor, Vetoquinol, Lure, France) in herds A, B, and C and a single subcutaneous injection of 2.5 mg/kg of tulathromycin (Draxxin, Zoetis, Malakoff, France) in herds D, E, and F.

In each fattening unit and each group, the proportions of curative first-line and relapse treatments were calculated as the number of YB treated with a first-line and relapse treatment divided by the number of YB in the group, and expressed as a percentage.

Processing of Antimicrobial Consumption Evaluation

Antimicrobial consumption was calculated using treatment incidences (TI_{UDD}) (a scalar) based on used daily dose (UDD) per YB (UDD_{YB}) of prophylactic treatment ($UDD_{\text{tildipirosin}}$), first-line treatment ($UDD_{\text{marbofloxacin}}$) and relapse treatment ($UDD_{\text{relapse}} = UDD_{\text{tulathromycin}}$ or $UDD_{\text{florfenicol}}$) using the following formula:

$$TI_{UDD(x)} = \frac{\text{Total amount(mg) consumed for a given AMD}(x)}{\text{UDD}(x) \text{ in mg/kg}} \times \frac{1}{\text{Corrective factor for } x \text{ in days}} \times \text{Total kg bw of YBs at risk} \times \text{Observation period in days}$$

where $TI_{UDD(x)}$ is the TI_{UDD} for a given antimicrobial (AMD) x , i.e., tildipirosin, marbofloxacin, florfenicol, or tulathromycin, Total amount (mg) consumed for a given AMD(x) is the total amount (in mg) of a given AMD for a given subgroup of YB. UDD was defined as the administered dose in milligrams per day per kilogram of body weight. For marbofloxacin, the retained value of $UDD_{\text{marbo/YB}}$ was 2 mg/kg; for tulathromycin, the value of $UDD_{\text{tula/YB}}$ was 2.5 mg/kg; for florfenicol, the value of $UDD_{\text{flor/YB}}$ was 40 mg/kg; for tildipirosin, the value of $UDD_{\text{til/YB}}$ was 4 mg/kg. To

account for the long acting formulation of some drugs, a corrective factor, corresponding to the estimated duration of effects (in days), was attributed to each drug, according to references already used by authorities (24, 25). The corrective factors, expressed in days, were 1, 9.3, 7, and 2 for marbofloxacin, tildipirosin, tulathromycin, and florfenicol, respectively. Therefore, the value of UDD (in mg/kg) was divided by the corrective factor. The results were expressed in TI_{UDD} for a YB of 300 kg at risk, representing a YB belonging to a group exposed to BRD in each pen, followed during the observation period of 30 days.

Statistical Methods

At the farm level, the effects of first and relapse treatments were analyzed using a mixed logistic model with group nested in herd as a random effect. $TI_{UDD_{\text{marbo}}}$ and $TI_{UDD_{\text{relapse}}}$ were analyzed using a chi-square test for independence. Significance was set at $P \leq 0.05$. At the individual animal level, for the comparison of CS and rectal temperatures before treatment and for the next 10 days, mixed linear models were tested including the variables group of treatment and time as fixed effects and farm and YB nested in farm as random effects. A similar mixed linear model was built for the comparison of rectal temperature. Statistical analyses were performed with the software SAS (SAS version 9.1 Inst. Inc., Cary, NC, USA).

RESULTS

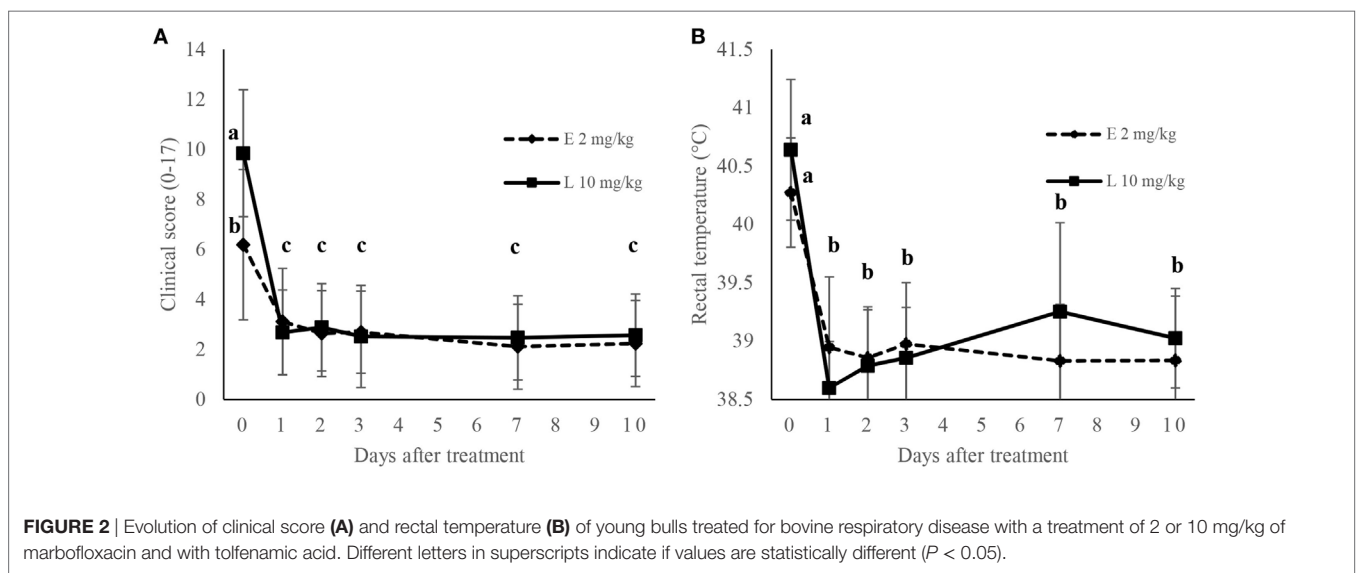
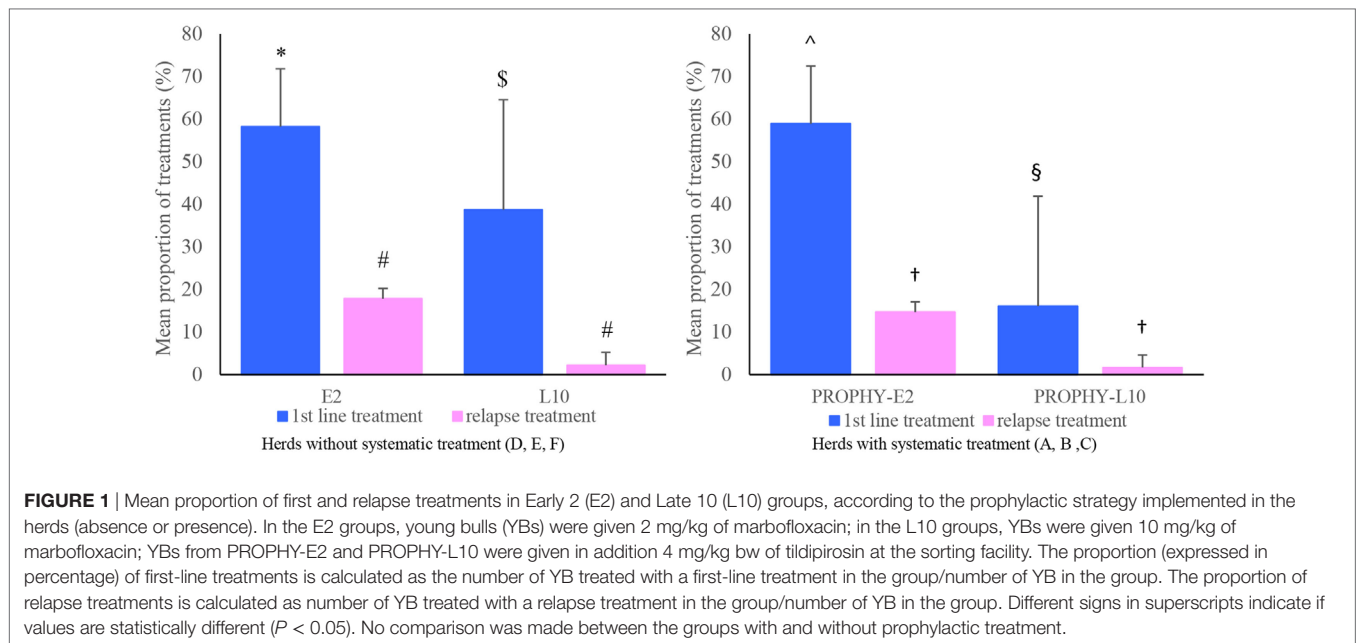
Proportion of Curative Treatments

Among the 195 YB included, 1 YB presenting severe signs of lameness 3 days after the start of the study and 1 YB with abnormal behavior were excluded. Treatments were administered between 2 and 14 days after entering the farm. The proportions of curative treatments are presented in **Figure 1**. In the herds without prophylactic treatment, the mean proportion of first and relapse treatments were, respectively, 58 ± 14 and $18 \pm 2\%$ in the E2 groups. In the L10 groups, the mean proportion of first and relapse treatments was, respectively, 39 ± 26 and $2 \pm 3\%$. In the PROPHY-E2 groups, the mean proportion of first and relapse treatments was, respectively, 59 ± 6 and $15 \pm 6\%$. In the PROPHY-L10 groups, the mean proportion of first and relapse treatments was, respectively, 16 ± 9 and $2 \pm 2\%$. The proportion of first-line treatments was significantly higher ($P < 0.05$) in the E2 groups compared to the L10 groups, regardless of the implementation of prophylactic treatment. The proportion of relapse treatments tended to be higher ($P = 0.08$) in the E2 groups compared to the L10 groups. We observed a strong variability between herds. Overall, herds that did not implement prophylactic antimicrobial treatment had a slightly higher proportion of first and relapse treatments compared to those with such implementation (see **Figure 1**).

One YB in the E2 group from herd A which received a relapse treatment died after the end of the study. Necropsy results reported severe lesions of suppurative cranial bronchopneumonia, caudal emphysema, and fibrino-hemorrhagic pleuritis.

Clinical Scores

The evolutions of mean CS and rectal temperature values are presented in **Figure 2**. At the time of inclusion, mean CS and



rectal temperature values were 5.9 and 40.2°C in the E2 groups, and 9.9 and 40.6°C in the L10 groups. In both groups, CS as well as rectal temperature decreased rapidly over time after treatment. 24 h after treatment, a significant decrease ($P < 0.05$) in the CS was observed in all groups. Mean CS at day 1 was 3 and 2.7 in the E2 and L10 groups, respectively, corresponding to a control CS. In the two groups, mean CS of the YB treated only once remained < 4 from day 0 to day 10. No significant difference ($P > 0.05$) was observed between the groups for CS and rectal temperature from day 1 to day 10 (see **Figure 2**).

Antimicrobial Consumption

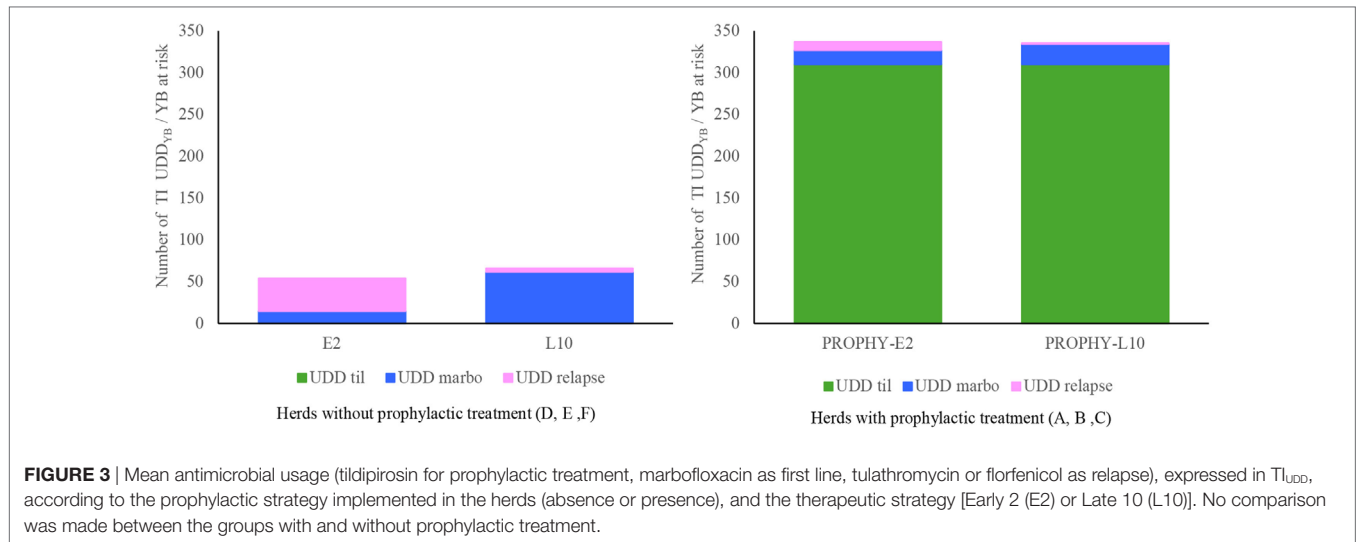
Regardless of the implementation of prophylactic treatment, mean $TI_{UDD\ marbo}$ per YB at risk were 16 and 43 in the E2 groups

and the L10 groups, respectively, showing a significant difference between groups ($P = 0.001$). Mean $TI_{UDD\ relapse}$ were significantly higher in the E2 groups compared to the L10 groups, with respective values of 25 and 3 ($P = 0.001$).

Figure 3 depicts these results and shows the relative impact of prophylactic antimicrobial treatment on global antimicrobial consumption. TI_{UDD} of prophylactic treatment represented 90% of the total TI_{UDD} in herds where a prophylactic antimicrobial treatment was implemented.

DISCUSSION

Our study aimed to assess the effectiveness of a protocol using an infection-stage adjusted antimicrobial regimen administered at



an early stage of BRD, before the onset of clinical signs observed by farmers. We hypothesized that such regimen could be sufficient to achieve the cure of YB presenting an increase of ruminal temperature, as a proxy for onset of BRD. The fluoroquinolone antibiotic marbofloxacin was chosen to test this hypothesis in the field situation because a set of experiments previously conducted with this antibiotic in both *in vitro* and *in vivo* models have already demonstrated its validity in experimental and controlled settings.

The treatment protocol implemented in the L10 group corresponded to a traditional field situation and served as a control for comparison with the alternative protocol implemented in the E2 group. The therapy implemented in our L10 group was based upon the detection of clinical signs of BRD, in which YBs were administered marbofloxacin at the dose recommended in the SPC. The results observed in this control group (incidence rate, curative percentage, and relapse rate) were in agreement with those obtained in other field studies allowing relevant comparisons with the low dose/early treatment group of the present study (26–30).

For the early detection group, we observed that the proportion of first-line and relapse treatments were increased compared to the late detection groups, raising the question of the relevance of a therapeutic protocol combining early detection and infection-stage adjusted dose. This question of relevance can be discussed as two sub-questions: the validity of our hypothesis that a low early AMD dose would be as effective as a high late AMD dose and of the appropriateness (specificity and precision) of the body temperature to initiate an early treatment.

First, our approach was based on the assumption that the intensity of clinical signs was well correlated with the size of the bacterial load and axiomatically, that a treatment initiated before occurrence of moderate or severe clinical signs will be associated with a lower pathogen load to eliminate. It has been shown in a calf experimental model of pneumonia that the values of CS, rectal temperature, respiratory rate and lung consolidation were correlated with each other (31). While previous work on rodent pneumonia models (13, 32, 33) and our model of pneumonia

in calves confirmed this relationship (18), neither the pathogen agents responsible for BRD nor the size of the inoculum at the infectious site were specified under the conditions of this field study. Although *Pasteurellaceae* are one of the most common agents of BRD in France (26), North America (6, 34, 35), and Australia (36), viruses are also often isolated and may be responsible for BRD with a similar clinical picture to what we observed.

Second, the specificity of our detection protocol based essentially on ruminal temperature monitoring to trigger an AMD treatment and the precision of its precocity compared to the occurrence of clinical symptoms are likely the most important factors generating uncertainty about the very necessity of initiating an AMD treatment, and consequently an overuse of AMD. We have to acknowledge that we are facing a lack of specific and precise tools to (i) quickly identify pathogens (viruses or bacteria) responsible for respiratory infection and (ii) assess the bacterial load at the infectious site. Hyperthermia *per se* is likely not specific enough to trigger an early infection-stage adjusted dose AMD treatment only on the YBs that should have been ineluctably treated later on with a higher dose. In the absence of an ideal diagnostic tool, we defined for body temperature a threshold based on the information observed in the experiment we conducted in calves and data from the literature to define the onset of early treatment in the field (elevation of ruminal temperature above 40.2°C for more than 12 consecutive hours, confirmed by a rectal temperature >39.7°C at the time of clinical examination (19, 20)). The rectal temperature value of 39.7°C is commonly used as the threshold value for diagnosis of abnormal temperature in YB (20, 37, 38). To ensure that YBs detected early when presenting an increased rectal temperature and no clinical signs of disease different from BRD, a physical examination was performed. Therefore, the follow-up of ruminal temperature and clinical examination before inclusion minimized the risk of including YBs not presenting BRD. Early detection of disease was confirmed by the CS and rectal temperature values at the time of inclusion, which were lower in the E2 compared to the L10 groups. However, it has been shown that clinical signs of BRD were not

systematically observed in YB presenting ruminal hyperthermia (19). Hence, it is very likely that we included YB in E2 groups that subsequently would not have presented clinical signs, explaining the higher proportion of first-line treatments in the E2 groups.

Furthermore, hyperthermia and clinical signs observed in the included animals are not pathognomonic of bacterial respiratory infection (19). It is possible that some treated animals did not show any bacterial infection. As an illustration, it is commonly accepted that viral infections precede and may lead to bacterial infections; host response to a viral infection will generate an increase in temperature, and then could lead to a too early treatment. In such a case, because marbofloxacin exhibits a rapid elimination half-life (39), effective concentrations will not be maintained until the appearance of bacterial infection. Such a situation may have led in our protocol to an increase in the proportions of relapse treatments, and also in first-line treatments. If this hypothesis is correct, an option would consist of using for early treatment an AMD product (substance or formulation) combining both inoculum-dependent pharmacodynamic properties (inoculum effect) and appropriate pharmacokinetic properties, i.e., a longer duration of action than the about 24 h in the current study.

Assuming that *Pasteurellaceae* were actually involved at the time of the early treatment, the accuracy of the reduced fluoroquinolone dose needs to be put into perspective. The selected marbofloxacin dosage for the present trial was based upon PK/PD evaluation of antimicrobial efficacy *in vitro* (40, 41) and in a mice model (42) previously published. This dosage was also successfully tested for the treatment of an experimental lung infection with *Mannheimia haemolytica* in calves (18). In this study, calves were treated with 2 mg/kg of marbofloxacin 6–10 h after inoculation of the pathogen in one group, or treated with 10 mg/kg at 36–40 h after inoculation in a second group. Efficacy of this decreased regimen administered early was found to be as good as a higher regimen at a later stage of illness and was associated with the size of the inoculum at the time of treatment. Similar results were observed in various *in vitro* and *in vivo* studies conducted with fluoroquinolones, stressing the existence of an inoculum effect (12, 13, 15, 16). In the present study, the selected dosage was the lowest dose ensuring bactericidal efficacy, assuming that early detection allowed operating on a low bacterial inoculum. In fact, we cannot rule out that at the time of initiation of our early treatment, the inoculum load to eradicate was actually higher than in our previous experiment, explaining a higher relapse rate. If this hypothesis is correct, the dose for an early treatment could be adjusted (increased) to take into account that body temperature is only a surrogate of the bacterial load to eradicate.

One of the goals of the present study was to assess the overall AMD consumption for the two tested treatment strategies. The method of evaluation of antimicrobial consumption was based on the reflection paper on collecting data of consumption developed by the European Medicines Agency (25) and on previous research conducted in livestock production (43, 44). Using indicators shared by regulatory agencies and other research units will allow comparison of drug consumption between our study and future studies using the same methodology. For each drug, UDD was assigned with the principles used by the European Medicines Agency to determine the defined daily dose for animals. In

herds implementing prophylactic treatment, the proportions of first-line and relapse treatments were decreased, but without significant difference, compared with herds not implementing prophylactic treatment. These results suggest that prophylactic antimicrobial treatment decreased the proportion of clinical BRD, but might not prevent their occurrence. Furthermore, prophylactic treatments represented more than 90% of the total amount of antimicrobials. This observation suggests that rationalization of prophylactic antimicrobial treatment might significantly reduce global antimicrobial consumption without altering the control of BRD in herds. To the best of our knowledge, it is the first time that treatment incidences of UDD have been calculated in a field study with YBs; therefore, it was difficult to compare the amount of antimicrobials used with other studies.

In the present study, antimicrobial treatments were prescribed by a veterinarian following a clinical examination, and all the antimicrobial classes are approved in food producing animals. To limit the impact of antimicrobial consumption on selection of resistant bacteria, antibiotic prophylactic practices should be limited to YB at high risk of presenting BRD, and a thorough evaluation of the risk factors for BRD should be performed prior treatment initiation. Finally, the use of critically important antimicrobials, such as marbofloxacin, must be supervised by veterinarians and should be based on antimicrobial susceptibility testing, in addition to epidemiological and clinical data evaluation, to ensure their efficacy and limit the spread of AMR.

In conclusion, our results suggest that the monitoring of the evolution of body temperature of YB, as a proxy of early detection of diseased animals, is not sufficient to currently recommend treatment with an early infection-stage adjusted regimen with a rather short-action antibiotic such as marbofloxacin. Transfer in the field of the “early detection/infection stage adjusted antimicrobial treatment” remains complex and seems to depend on both PD (inoculum effect) and PK (duration of action) properties of the drug. But more importantly, it also depends on the implementation of early and precise diagnostic tools, and research should be encouraged in this direction. Specific biomarkers correlated with the bacterial load, and pathogen specific tests at the animal's side, are of great interest to encourage veterinary precision antimicrobial therapy, i.e., optimized preventive or curative therapeutic approach (right animal, right drug, right dose, and right time) based on identification of biomarkers of disease and use of technologies of disease monitoring.

ETHICS STATEMENT

The research protocol was compliant with the European Guideline on Good Clinical Practice (CVMP/VICH/595/98-FINAL) and has been submitted to the French National Food Safety Agency, under the reference ENR/KLD/EC-00710-0. All procedures were performed in accordance with the European Directive (2010/63/EU) and French Regulations (Decree no. 2013-118; articles R214-87 and R214-137 from Rural Code) related to the Care and Use of Laboratory Animals. However, because all the procedures involving animals were conducted in commercial farms, and therefore do not fall under the scope of the European Directive (2010/63/EU) on the protection of animals used for scientific

purposes (article 1-5), ethics committees established under the French Regulations do not examine approvals of such protocols.

AUTHOR CONTRIBUTIONS

GL, P-LT, AB-M, and SA were responsible for the conception of the research and analyzed the data. GL, FG, and SA conducted the experiments with the help of personnel from Oniris. All

the authors contributed to the redaction and approved the final manuscript.

FUNDING

The funders (Vetoquinol) had no role in study design, data collection, and analysis, decision to publish, or preparation of the manuscript.

REFERENCES

1. Agerso Y, Aarestrup FM. Voluntary ban on cephalosporin use in Danish pig production has effectively reduced extended-spectrum cephalosporinase-producing *Escherichia coli* in slaughter pigs. *J Antimicrob Chemother* (2013) 68:569–72. doi:10.1093/jac/dks427
2. Mc Ewen SA, Fedorka PJ. Antimicrobial use and resistance in animals. *Clin Infect Dis* (2002) 34:93–106. doi:10.1086/340246
3. Kouyos RD, Metcalf CJE, Birger R, Klein EY, Abel zur Wiesch P, Ankomah P, et al. The path of least resistance: aggressive or moderate treatment? *Proc Biol Sci* (2014) 281:20140566–20140566. doi:10.1098/rspb.2014.0566
4. Laxminarayan R. Antibiotic effectiveness: balancing conservation against innovation. *Science* (2014) 345:1299–301. doi:10.1126/science.1254163
5. Toutain PL, Ferran AA, Bousquet-Melou A, Pelligand L, Lees P. Veterinary medicine needs new green antimicrobial drugs. *Front Microbiol* (2016) 7:1196. doi:10.3389/fmicb.2016.01196
6. Fulton RW. Bovine respiratory disease research (1983–2009). *Anim Health Res Rev* (2009) 10:131–9. doi:10.1017/S146625230999017X
7. De Briyne N, Atkinson J, Borriello SP, Pokludova L. Antibiotics used most commonly to treat animals in Europe. *Vet Rec* (2014) 175(13):325. doi:10.1136/vr.102462
8. Nickell JS, White BJ. Metaphylactic antimicrobial therapy for bovine respiratory disease in stocker and feedlot cattle. *Vet Clin North Am Food Anim Pract* (2010) 26:285–301. doi:10.1016/j.cvfa.2010.04.006
9. O'Connor AM, Coetzee JF, da Silva N, Wang C. A mixed treatment comparison meta-analysis of antibiotic treatments for bovine respiratory disease. *Prev Vet Med* (2013) 110:77–87. doi:10.1016/j.prevetmed.2012.11.025
10. Heins BD, Nydam DV, Woolums AR, Berghaus RD, Overton MW. Comparative efficacy of enrofloxacin and tulathromycin for treatment of preweaning respiratory disease in dairy heifers. *J Dairy Sci* (2014) 97:372–82. doi:10.3168/jds.2013-6696
11. Hoar BR, Jelinski MD, Ribble CS, Janzen ED, Johnson JC. A comparison of the clinical field efficacy and safety of florfenicol and tilmicosin for the treatment of undifferentiated bovine respiratory disease of cattle in western Canada. *Can Vet J* (1998) 39:161–6.
12. Ferran A, Dupouy V, Toutain PL, Bousquet-Mélou A. Influence of inoculum size on the selection of resistant mutants of *Escherichia coli* in relation to mutant prevention concentrations of marbofloxacin. *Antimicrob Agents Chemother* (2007) 51:4163–6. doi:10.1128/AAC.00156-07
13. Kesteman AS, Ferran AA, Perrin-Guyomard A, Laurentie M, Sanders P, Toutain PL, et al. Influence of inoculum size and marbofloxacin plasma exposure on the amplification of resistant subpopulations of *Klebsiella pneumoniae* in a rat lung infection model. *Antimicrob Agents Chemother* (2009) 53:4740–8. doi:10.1128/AAC.00608-09
14. Eagle H. The effect of the size of the inoculum and the age of the infection on the curative dose of penicillin in experimental infections with *Streptococci*, *Pneumococci*, and *Treponema pallidum*. *J Exp Med* (1949) 90:595–607. doi:10.1084/jem.90.6.595
15. Mizunaga S, Kamiyama T, Fukuda Y, Takahata M, Mitsuyama J. Influence of inoculum size of *Staphylococcus aureus* and *Pseudomonas aeruginosa* on in vitro activities and in vivo efficacy of fluoroquinolones and carbapenems. *J Antimicrob Chemother* (2005) 56:91–6. doi:10.1093/jac/dki163
16. Morrissey I. The effect of the inoculum size on bactericidal activity. *J Antimicrob Chemother* (1999) 43:423a–4a. doi:10.1093/jac/43.3.423a
17. Udekwi KI, Parrish N, Ankomah P, Baquero F, Levin BR. Functional relationship between bacterial cell density and the efficacy of antibiotics. *J Antimicrob Chemother* (2009) 63:745–57. doi:10.1093/jac/dkn554
18. Lhermie G, Ferran AA, Assié S, Cassard H, El Garch F, Schneider M, et al. Impact of timing and dosage of a fluoroquinolone treatment on the microbiological, pathological, and clinical outcomes of calves challenged with *Mannheimia haemolytica*. *Front Microbiol* (2016) 7:237. doi:10.3389/fmicb.2016.00237
19. Timsit E, Bareille N, Seegers H, Lehebel A, Assié S. Visually undetected fever episodes in newly received beef bulls at a fattening operation: occurrence, duration, and impact on performance. *J Anim Sci* (2011) 89:4272–80. doi:10.2527/jas.2011-3892
20. Timsit E, Assié S, Quiniou R, Seegers H, Bareille N. Early detection of bovine respiratory disease in young bulls using reticulo-rumen temperature boluses. *Vet J* (2011) 190:136–42. doi:10.1016/j.tvjl.2010.09.012
21. Torres S, Thomson DU, Bello NM, Nosky BJ, Reinhardt CD. Field study of the comparative efficacy of gamithromycin and tulathromycin for the treatment of undifferentiated bovine respiratory disease complex in beef feedlot calves. *Am J Vet Res* (2013) 74:847–53. doi:10.2460/ajvr.74.6.847
22. Dowling A, Hodgson JC, Schock A, Donachie W, Eckersall PD, Mckendrick IJ. Experimental induction of pneumonic pasteurellosis in calves by intratracheal infection with *Pasteurella multocida* biotype A:3. *Res Vet Sci* (2002) 73:37–44. doi:10.1016/S0034-5288(02)00037-1
23. Sidhu PK, Landoni MF, Aliabadi MHS, Toutain PL, Lees P. Pharmacokinetic and pharmacodynamic modelling of marbofloxacin administered alone and in combination with tolfenamic acid in calves. *J Vet Pharmacol Ther* (2011) 34:376–87. doi:10.1111/j.1365-2885.2010.01247.x
24. Postma M, Sjölund M, Collineau L, Lösken S, Stärk KDC, Dewulf J. Assigning defined daily doses animal: a European multi-country experience for antimicrobial products authorized for usage in pigs. *J Antimicrob Chemother* (2015) 70:294–302. doi:10.1093/jac/dku347
25. EMA. *Revised ESVAC Reflection Paper on Collecting Data on Consumption of Antimicrobial Agents Per Animal Species, on Technical Units of Measurement and Indicators for Reporting Consumption of Antimicrobial Agents in Animals*. (Vol. 44). London: European Medicine Agency (2013). p. 1–29. EMA/286416/2012-Rev1.
26. Assié S, Seegers H, Makoschey B, Desire-Bousquie L, Bareille N. Exposure to pathogens and incidence of respiratory disease in young bulls on their arrival at fattening operations in France. *Vet Rec* (2009) 165:195–9. doi:10.1136/vr.165.7.195
27. Assié S, Seegers H, Beaudeau F. Incidence of respiratory disorders during housing in non-weaned Charolais calves in cow-calf farms of Pays de la Loire (western France). *Prev Vet Med* (2004) 63:271–82. doi:10.1016/j.prevetmed.2004.01.014
28. Grandemange E, Fournel S, Giboin H. Efficacy of a single injection of marbofloxacin in the treatment of bovine respiratory disease. *Revue Med Vet* (2012) 163:287–94.
29. Crepieux T, Miller C, Regev-Shoshani G, Schaefer A, Dorin C, Alexander T, et al. Randomized, non-inferiority trial comparing a nitric oxide releasing solution with a macrolide antibiotic for control of bovine respiratory disease in beef feedlot calves at high-risk of developing respiratory tract disease. *Res Vet Sci* (2016) 105:216–21. doi:10.1016/j.rvsc.2016.02.020
30. Health UVS-C for E and A. *Types and Costs of Respiratory Disease Treatments in U.S. Fort Collins, CO: Feedlots* (2013).
31. Reeve-Johnson L. Relationships between clinical and pathological signs of disease in calves infected with *Mannheimia (Pasteurella) haemolytica* type A1. *Vet Rec* (2001) 149:549–52. doi:10.1136/vr.149.18.549
32. Vasseur MV, Laurentie M, Rolland JG, Perrin-Guyomard A, Henri J, Ferran AA, et al. Low or high doses of cefquinome targeting low or high bacterial inocula cure *Klebsiella pneumoniae* lung infections but differentially impact

- the levels of antibiotic resistance in fecal flora. *Antimicrob Agents Chemother* (2014) 58:1744–8. doi:10.1128/AAC.02135-13
33. Ferran AA, Toutain PL, Bousquet-Mélou A. Impact of early versus later fluoroquinolone treatment on the clinical, microbiological and resistance outcomes in a mouse-lung model of *Pasteurella multocida* infection. *Vet Microbiol* (2011) 148:292–7. doi:10.1016/j.vetmic.2010.09.005
 34. Confer AW. Update on bacterial pathogenesis in BRD. *Anim Heal Res Rev* (2009) 10:145–8. doi:10.1017/S1466252309990193
 35. Rice JA, Carrasco-Medina L, Hodgins DC, Shewen PE. *Mannheimia haemolytica* and bovine respiratory disease. *Anim Heal Res Rev* (2007) 8:117–28. doi:10.1017/S1466252307001375
 36. Cusack PMV, McMeniman N, Lean IJ. The medicine and epidemiology of bovine respiratory disease in feedlots. *Aust Vet J* (2003) 81:480–7. doi:10.1111/j.1751-0813.2003.tb13367.x
 37. Schaefer AL, Cook NJ, Church JS, Basarab J, Perry B, Miller C, et al. The use of infrared thermography as an early indicator of bovine respiratory disease complex in calves. *Res Vet Sci* (2007) 83:376–84. doi:10.1016/j.rvsc.2007.01.008
 38. Galyean ML, Gunter SA, Malcolm-Callis KJ. Effects of arrival medication with tilmicosin phosphate on health and performance of newly received beef cattle. *J Anim Sci* (1995) 73:1219–26. doi:10.2527/1995.7351219x
 39. Ismail M, El-Kattan YA. Comparative pharmacokinetics of marbofloxacin in healthy and *Mannheimia haemolytica* infected calves. *Res Vet Sci* (2007) 82:398–404. doi:10.1016/j.rvsc.2006.10.001
 40. Vallé M, Schneider M, Galland D, Giboin H, Woehrlé F. Pharmacokinetic and pharmacodynamic testing of marbofloxacin administered as a single injection for the treatment of bovine respiratory disease. *J Vet Pharmacol Ther* (2012) 35:519–28. doi:10.1111/j.1365-2885.2011.01350.x
 41. Potter T, Illambas J, Pelligand L, Rycroft A, Lees P. Pharmacokinetic and pharmacodynamic integration and modelling of marbofloxacin in calves for *Mannheimia haemolytica* and *Pasteurella multocida*. *Vet J* (2013) 195:53–8. doi:10.1016/j.tvjl.2012.08.027
 42. Lhermie G, El Garch F, Toutain PL, Ferran AA, Bousquet-Mélou A. Bacterial species-specific activity of a fluoroquinolone against two closely related pasteurellaceae with similar MICs: differential in vitro inoculum effects and in vivo efficacies. *PLoS One* (2015) 10:e0141441. doi:10.1371/journal.pone.0141441
 43. Timmerman T, Dewulf J, Catry B, Feyen B, Opsomer G, de Kruif A, et al. Quantification and evaluation of antimicrobial drug use in group treatments for fattening pigs in Belgium. *Prev Vet Med* (2006) 74:251–63. doi:10.1016/j.prevetmed.2005.10.003
 44. Pardon B, Catry B, Dewulf J, Persoons D, Hostens M, De bleecker K, et al. Prospective study on quantitative and qualitative antimicrobial and anti-inflammatory drug use in white veal calves. *J Antimicrob Chemother* (2012) 67:1027–38. doi:10.1093/jac/dkr570

Conflict of Interest Statement: GL had an affiliation, and FG still has one to the commercial funder Vetoquinol. All other authors declare that the research was conducted in the absence of any commercial or financial relationships that could be construed as a potential conflict of interest.

Copyright © 2017 Lhermie, Toutain, El Garch, Bousquet-Mélou and Assié. This is an open-access article distributed under the terms of the Creative Commons Attribution License (CC BY). The use, distribution or reproduction in other forums is permitted, provided the original author(s) or licensor are credited and that the original publication in this journal is cited, in accordance with accepted academic practice. No use, distribution or reproduction is permitted which does not comply with these terms.