



# Interbull: constructing international commensurability for dairy cattle selection

Vincent Ducrocq

## ► To cite this version:

Vincent Ducrocq. Interbull: constructing international commensurability for dairy cattle selection. 2017 Interbull Meeting, Aug 2017, Tallin, Estonia. , 2017. hal-01606243

**HAL Id: hal-01606243**

**<https://hal.science/hal-01606243>**

Submitted on 2 Jun 2020

**HAL** is a multi-disciplinary open access archive for the deposit and dissemination of scientific research documents, whether they are published or not. The documents may come from teaching and research institutions in France or abroad, or from public or private research centers.

L'archive ouverte pluridisciplinaire **HAL**, est destinée au dépôt et à la diffusion de documents scientifiques de niveau recherche, publiés ou non, émanant des établissements d'enseignement et de recherche français ou étrangers, des laboratoires publics ou privés.



Distributed under a Creative Commons Attribution - ShareAlike 4.0 International License

# Interbull: constructing international commensurability for dairy cattle selection

**Lidia Chavinskaia**  
**(LISIS)**

**Director, Research Unit**



# Project

*(part of GENOSOUTH coordinated by V. Ducrocq)*

- Context of **genomic « revolution »** in dairy cattle breeding **and its internationalization**
    - **How does this technology of cattle breeding circulate across countries?**
  - **Comparability of genetic values**  
**Commensurability** – *making things comparable through a common metric*  
*(Espeland & Stevens 1998, Dérosières 2014)*
- Interbull Meeting • Social and technical process • 2

# Interbull story in 3 stages:

## 1975 – 1993: **Construction of the commensurability**

- Commercial issue – constructing product quality
- From researchers working groups to institutionalized community with politically recognized issue: comparability of genetic indices
- Conversions - “translation” of genetic indices

## 1993 – 2009: **Stabilization of commensurability.**

- MACE (multi-trait across country evaluation)
- Calculation center in Uppsala
- From research to service
- Space of commensuration = trade space

## 2009 – now: **Destabilized commensurability**

- Genomic selection
- New genotype data issue
- Demultiplication of players and diversification of services

# Constructing Commensurability

**Biological** problematic

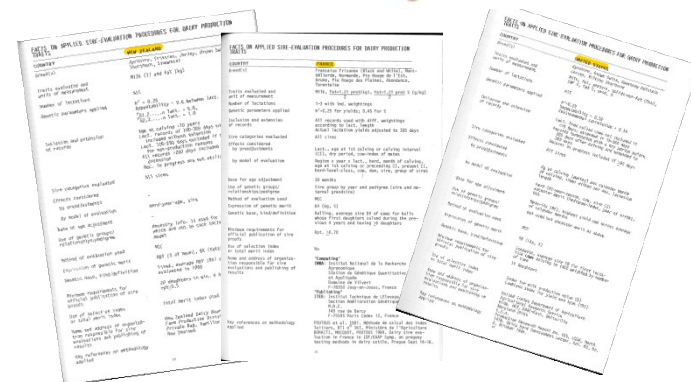


**Social context** – multispace of commercial « coopetition »

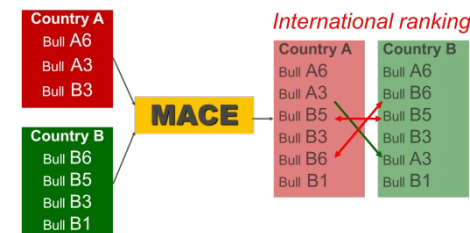


**Technical solution** – mathematical model estimating correlations and adaptong rankings

**GxE**

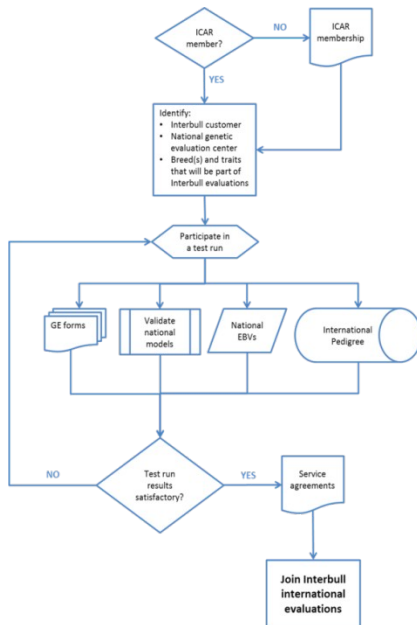


Facts on applied sire-evaluation procedures for dairy production traits.  
Source: Interbull Bulletin n°3, 1988



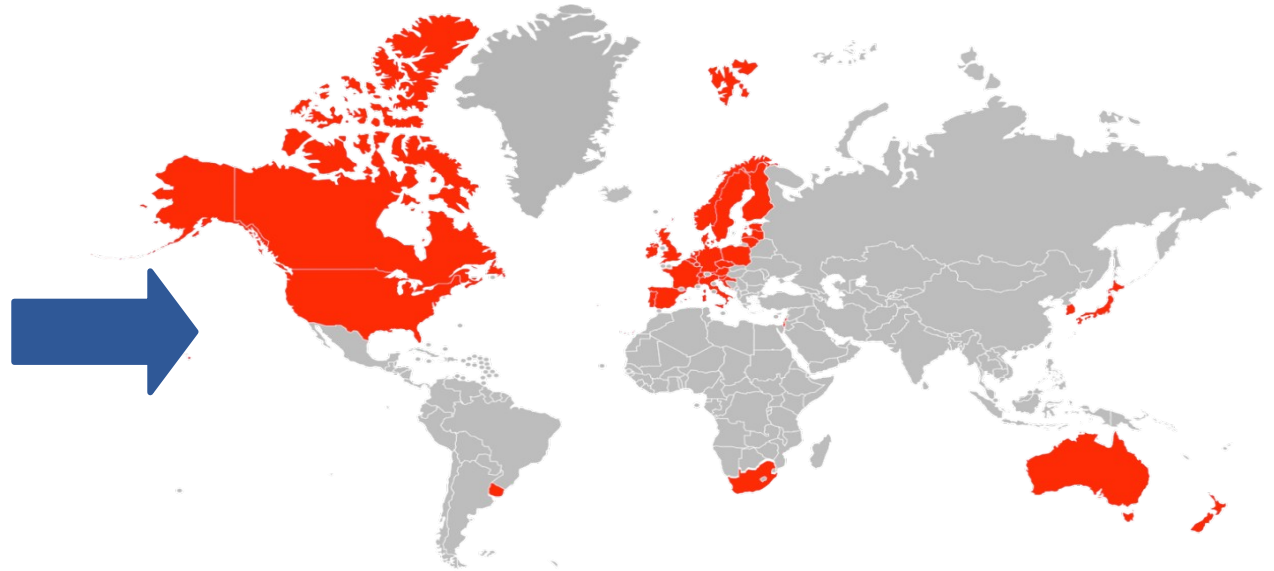
# Space of Commensurability

Technical space = political (trade) space



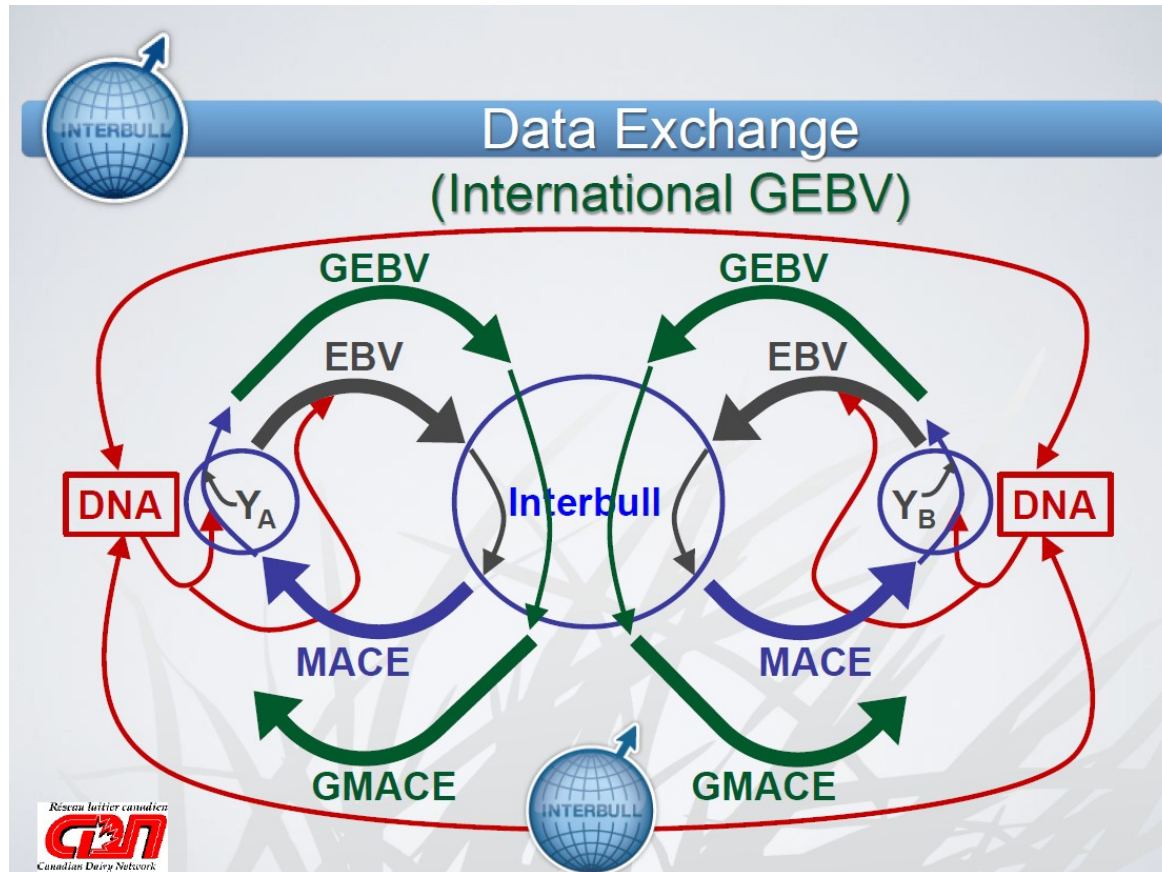
*Steps for an organization willing to join the Interbull services.*

*Source: Interbull Code of Practice*



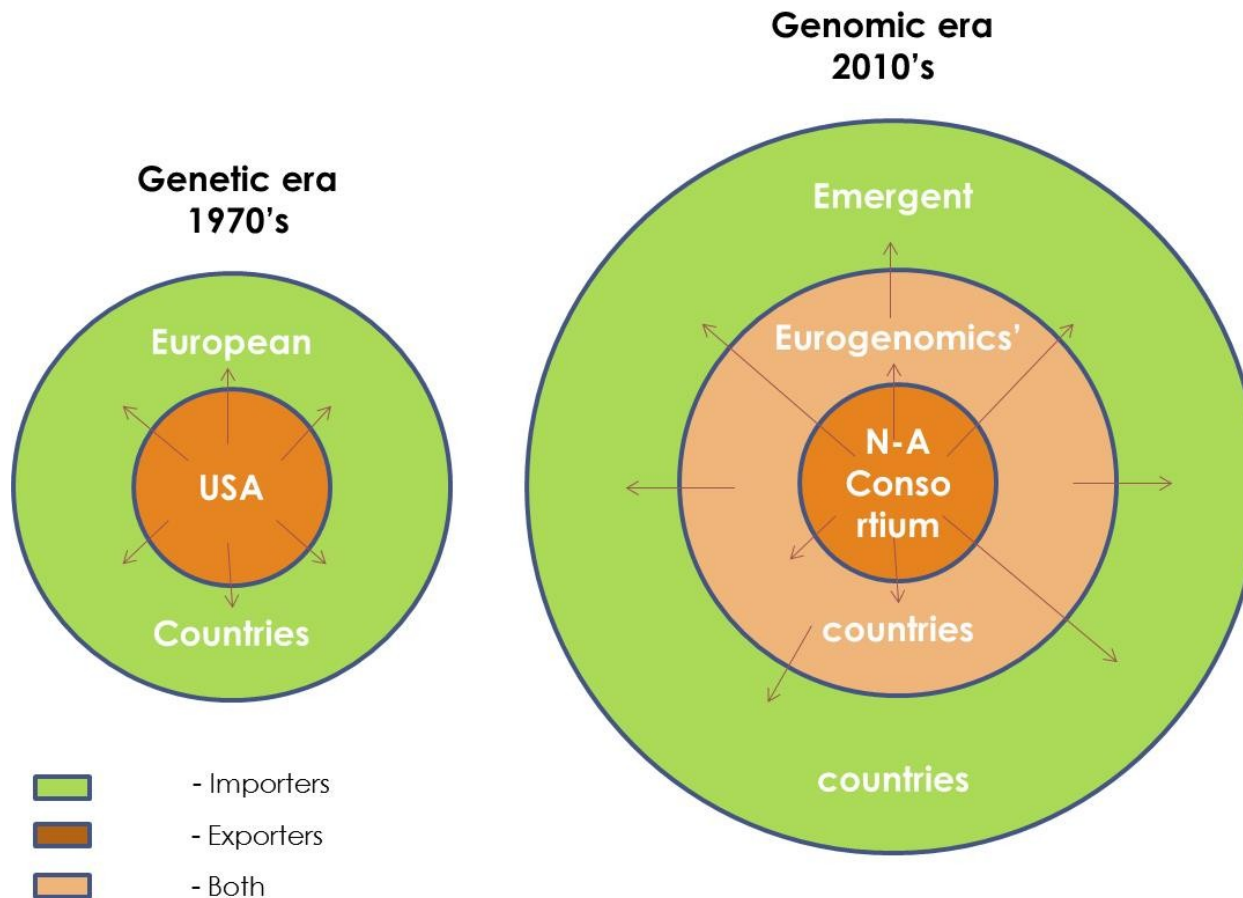
*Interbull Map. Source: A. Roozen presentation 2016*

# Crisis of commensurability



Source: P. Sullivan Presentation Workshop Ljubljana 2017

# New commensurability for new context?





Thank you for your attention

