



Palatable hyper-caloric foods impact on neuronal plasticity

Jean-Pascal Morin, Luis F. Rodríguez-Durán, Kioko Guzmán-Ramos, Claudia Perez-Cruz, Guillaume Ferreira, Sofia Diaz-Cintra, Gustavo Pacheco-López

► To cite this version:

Jean-Pascal Morin, Luis F. Rodríguez-Durán, Kioko Guzmán-Ramos, Claudia Perez-Cruz, Guillaume Ferreira, et al.. Palatable hyper-caloric foods impact on neuronal plasticity. *Frontiers in Behavioral Neuroscience*, 2017, 11, pp.1-11. 10.3389/fnbeh.2017.00019 . hal-01605450

HAL Id: hal-01605450

<https://hal.science/hal-01605450>

Submitted on 26 May 2020

HAL is a multi-disciplinary open access archive for the deposit and dissemination of scientific research documents, whether they are published or not. The documents may come from teaching and research institutions in France or abroad, or from public or private research centers.

L'archive ouverte pluridisciplinaire **HAL**, est destinée au dépôt et à la diffusion de documents scientifiques de niveau recherche, publiés ou non, émanant des établissements d'enseignement et de recherche français ou étrangers, des laboratoires publics ou privés.



Distributed under a Creative Commons Attribution 4.0 International License



Palatable Hyper-Caloric Foods Impact on Neuronal Plasticity

Jean-Pascal Morin^{1,2}, Luis F. Rodríguez-Durán^{1,3}, Kioko Guzmán-Ramos¹,
Claudia Perez-Cruz⁴, Guillaume Ferreira^{5,6}, Sofia Diaz-Cintra⁷ and
Gustavo Pacheco-López^{1,8*}

¹Department of Health Sciences, Metropolitan Autonomous University (UAM), Lerma, Mexico, ²Institute of Medical Psychology and Behavioral Immunobiology, University Hospital Essen, University of Duisburg-Essen, Essen, Germany, ³Laboratory of Neurobiology of Learning and Memory, Division of Research and Graduate Studies, Faculty of Psychology, National Autonomous University of Mexico (UNAM), Mexico City, Mexico, ⁴Department of Pharmacology, Center of Research and Advance Studies (CINVESTAV), Mexico City, Mexico, ⁵Laboratory of Nutrition and Integrative Neurobiology, National Institute of Agricultural Research (INRA), UMR 1286, Bordeaux, France, ⁶Laboratory of Nutrition and Integrative Neurobiology, Université de Bordeaux, Bordeaux, France, ⁷Institute of Neurobiology, National Autonomous University of Mexico (UNAM), Queretaro, Mexico, ⁸Department of Health Sciences and Technology, Swiss Federal Institute of Technology (ETH) Zurich, Schwerzenbach, Switzerland

OPEN ACCESS

Edited by:

Amy Claire Reichelt,
RMIT University, Australia

Reviewed by:

Thomas Alexander Lutz,
University of Zurich, Switzerland
Mariano Ruiz-Gayo,
CEU San Pablo University, Spain

*Correspondence:

Gustavo Pacheco-López
g.pacheco@correo.ler.uam.mx

Received: 18 November 2016

Accepted: 23 January 2017

Published: 14 February 2017

Citation:

Morin J-P, Rodríguez-Durán LF,
Guzmán-Ramos K, Perez-Cruz C,
Ferreira G, Diaz-Cintra S and
Pacheco-López G (2017) Palatable
Hyper-Caloric Foods Impact on
Neuronal Plasticity.
Front. Behav. Neurosci. 11:19.
doi: 10.3389/fnbeh.2017.00019

Neural plasticity is an intrinsic and essential characteristic of the nervous system that allows animals “self-tuning” to adapt to their environment over their lifetime. Activity-dependent synaptic plasticity in the central nervous system is a form of neural plasticity that underlies learning and memory formation, as well as long-lasting, environmentally-induced maladaptive behaviors, such as drug addiction and overeating of palatable hyper-caloric (PHc) food. In western societies, the abundance of PHc foods has caused a dramatic increase in the incidence of overweight/obesity and related disorders. To this regard, it has been suggested that increased adiposity may be caused at least in part by behavioral changes in the affected individuals that are induced by the chronic consumption of PHc foods; some authors have even drawn attention to the similarity that exists between over-indulgent eating and drug addiction. Long-term misuse of certain dietary components has also been linked to chronic neuroimmune maladaptation that may predispose individuals to neurodegenerative conditions such as Alzheimer’s disease. In this review article, we discuss recent evidence that shows how consumption of PHc food can cause maladaptive neural plasticity that converts short-term ingestive drives into compulsive behaviors. We also discuss the neural mechanisms of how chronic consumption of PHc foods may alter brain function and lead to cognitive impairments, focusing on prenatal, childhood and adolescence as vulnerable neurodevelopmental stages to dietary environmental insults. Finally, we outline a societal agenda for harnessing permissive obesogenic environments.

Keywords: obesity, overweight, adiposity, food addiction, indulgent eating, hedonics, neuroinflammation, neural plasticity

INTRODUCTION

Given the abundance and omnipresence of palatable hyper-caloric (PHc) foods, overweight and obesity have become a pandemic phenotype in a large portion of the world’s population (WHO, 2016a). Thus, an increased understanding of the underlying causes of obesity is warranted in order to better prevent and treat this growing and global health problem.

Short-term homeostatic control of food intake is essential for animal survival. In addition to this, top-down modulation of homeostatic circuits including palatability and post-prandial rewarding effects modulate food ingestion and seeking behavior (Tulloch et al., 2015). Those drives can support and motivate long-term foraging strategies and planning. In the modern calorie-permissive societies, in which lower energy investments are required to obtain PHc food, those hard-wired capacities, which once evolved to cope with uncertain caloric availability in the wilderness and were evolutionary acquired as adaptive characters, now clearly became maladaptive and do not promote health. Evidence reviewed here suggest that PHc food consumption is self-reinforcing and may further lead to health problems, including cognitive impairments and possibly neurodegenerative diseases that produce a decrease in general wellbeing and productivity. But how eating densely caloric foods can modify brain and behavior in such drastic ways?

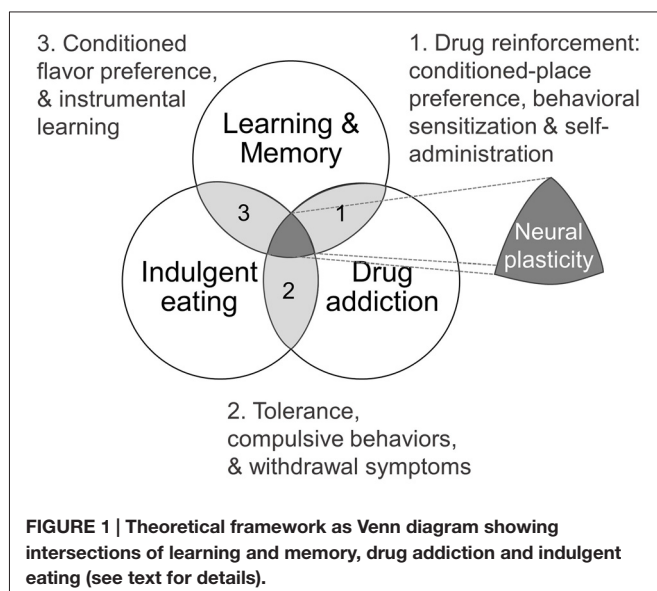
In this review article we will explore the brain plasticity mechanism that contribute to persistent overeating and thus causing overweight/obesity, focusing on the overlap of learning and memory, addictive behaviors and indulgent eating. As well we pinpoint critical neurodevelopmental periods for dietary environmental insults. Graphical summaries are depicted on **Figures 1, 2** and key terms definitions can be found as glossary on **Table 1**.

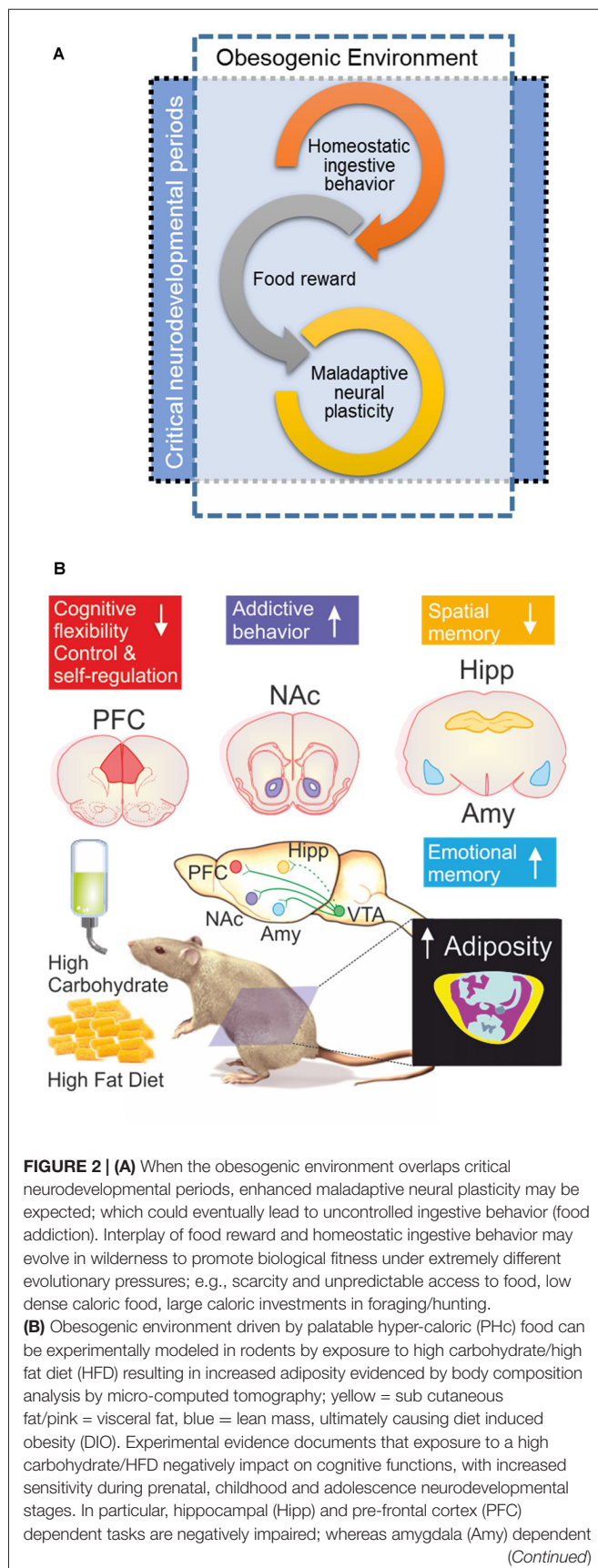
Neural Plasticity and Addictive Behaviors

One of the most outstanding properties of the nervous system is its ability to modify its structure and function in response to experience, thus allowing individual ontogenic “self-tuning” to particular environmental drivers. The phenomenon of neural plasticity is known to underlie the learning, consolidation and refinement of both adaptive and maladaptive behaviors (Abbott and Nelson, 2000; Citri and Malenka, 2008; Sehgal et al., 2013). At the synaptic level, activity-dependent modifications

of the strength or efficacy of synaptic transmission shape the response properties of neural circuits. The versatility and complexity of neural computations is made possible by a huge diversity of cellular plasticity mechanisms (Nelson and Turrigiano, 2008). Those include Hebbian-type plasticity, such as long-term potentiation (LTP) and long-term depression (LTD), as well as homeostatic synaptic scaling and metaplasticity (Pérez-Otaño and Ehlers, 2005).

Some studies have suggested that the development of addictive behaviors share common features with traditional learning models (**Figure 1**; Jones and Bonci, 2005). For example, N-methyl-D-aspartate (NMDA) receptors blockade, which effectively blocks LTP and LTD in many brain regions (Malenka and Bear, 2004), also prevents many behavioral adaptations normally associated with drug reinforcement, such as conditioned-place preference, behavioral sensitization and self-administration (Mameli and Lüscher, 2011). Furthermore, relapse caused by exposure to cues associated with the drug experience is a major clinical problem that contributes to the persistence of addiction, and its underlying mechanisms are thought to depend at least in part on the phenomenon of pattern completion in the hippocampal CA3 region, which is a hallmark of contextual memory retrieval (Kauer and Malenka, 2007; Kesner et al., 2016). On the other hand, synaptic scaling of α -amino-3-hydroxy-5-methyl-4-isoxazolepropionic acid (AMPA)-receptors surface expression in the nucleus accumbens (NAcc) neurons has been observed with the appearance of addictions (Sun and Wolf, 2009; Tang and Dani, 2009; Reimers et al., 2014). In addition, a single cocaine administration induces metaplasticity in the ventral tegmental area (VTA) through increased synaptic non-GluA2 containing AMPA receptors as well as NR2B containing NMDA receptors, contributing to sensitization upon further exposure, as well as possibly lowering the threshold for further plasticity events in the VTA–NAcc pathway (Creed and Lüscher, 2013). More controversial, however, is the idea that humans can develop “food-dependence” through learning and habit-formation, and that obesity may be seen, at least in some cases, as a clinical manifestation of “food addiction” (Volkow and Wise, 2005; Blumenthal and Gold, 2010; Volkow et al., 2013a; García-García et al., 2014; Carlier et al., 2015). Even though food, as opposed to drugs of abuse, is needed for an organism’s survival, dependence on PHc foods in humans and animal models shares characteristics with drug addiction (**Figure 1**). These include activation of the mesolimbic dopaminergic system (Blackburn et al., 1986; Hernandez and Hoebel, 1988), the activation of similar brain structures (Robinson et al., 2016), as well as an overlapping symptomatology such as the appearance of tolerance, compulsive behaviors (Johnson and Kenny, 2010; Rossetti et al., 2014) and withdrawal symptoms in relation to PHc food that has been consistently observed in obese individuals (Iemolo et al., 2012; García-García et al., 2014). In this regard, there are many similarities between the eating behavior of some obese individuals and the diagnostic criteria for substances dependence on the *Diagnostic and Statistical Manual of Mental Disorders* (DSM -IV, -5). For instance, both patterns of behavior show



**FIGURE 2 | Continued**

function seems to be enhanced. Cognitive impairments are accompanied (or preceded) by ingestive addictive behaviors driven by the dopaminergic reward system that initiates its projections on the ventral tegmental area (VTA) directly innervating the Amy, PFC, as well as the nucleus accumbens (NAcc; Lisman and Grace, 2005; Russo and Nestler, 2013), the brain structure assessing the hedonic and saliency stimuli properties. It should be remarked that direct projections from VTA to Hipp are on current debate (Takeuchi et al., 2016), thus are depicted with a dash-line. The “reward deficiency syndrome” propose that addiction vulnerability results on from hypo-responsiveness of the midbrain dopaminergic system, leading individuals to seek out and engage in addictive behaviors in order to compensate for underarousal (George et al., 2012), which is in line to the theory of food addiction (Volkow and Wise, 2005; Davis et al., 2011) in particular for PHc food (Ifland et al., 2009; Schulte et al., 2015).

signs of: tolerance; withdrawal; substances taken in larger amounts or for longer time than intended; unsuccessful efforts to control usage; a large amount of time spent obtaining, using, or recovering from use of the substance; a neglect of social, occupational, or recreational activities; and continued use despite a recurrent physical or psychological problem caused or exacerbated by the substance (Davis et al., 2011). Following this rationale and aiming to develop a reliable tool for diagnosing food addiction, the DSM-IV criteria for substance dependence have been adapted to create the *Yale Food Addiction Scale* (YFAS, Gearhardt et al., 2009, 2016).

Additionally, it is important to recognize that purified and concentrated ingredients used to produce PHc food do resemble the production of addictive drugs that refine cocaine from coca leaf or heroin from poppies (Ifland et al., 2009). There is still scientific debate and no consensus has been reached on the etiological magnitude of food addiction on explaining obesity (Carter et al., 2016), however it is clear by now that in particular PHc foods, like addictive drugs, may produce powerful changes in the brain reward circuitry that we did not evolve for, leading to overconsumption and weight gain. Supporting this view, recent evidence indicates that the addictive effect of food, as for drugs, may be dependent on the rate of its absorption and metabolism; foods reported to be more addictive are rapidly digested and absorbed (Schulte et al., 2015; Criscitelli and Avena, 2016) and are also highly rewarding as we will comment on the next section.

Reward-Modulated Nutrient Intake

In addition to the homeostatic circuitry that underlie eating (reviewed in Morton et al., 2014), food intake is strongly regulated by hedonic or reward-based signals, which can often override the homeostatic pathways during periods of relative energy abundance by increasing the desire to consume palatable foods (Lutter and Nestler, 2009). Presentation of palatable foods induces potent release of dopamine into the NAcc, originating in the VTA projection, contributing to the motivational and rewarding value of food (**Figure 2B**). Crucially, the activation of this pathway during meals is related to a loss of control over food intake in some individuals (Stoeckel et al., 2008).

The hedonic component of food intake can be further divided in palatability and post-prandial reward. The palatability

TABLE 1 | Glossary.

Diet induced obesity (DIO)	Procedure to expose experimental subjects to a hypercaloric diet intervention (e.g., HFD, Western diet).
High fat diet (HFD)	Diet used on pre-clinical experiments usually with at least 45 kcal% from fat (predominately lard). In contrast a control diet contains 10 kcal% from fat.
Homeostatic synaptic scaling	Homeostatic synaptic scaling or simply synaptic scaling is a post-synaptic synaptic plasticity mechanism that changes the global level of postsynaptic AMPA receptors according to a neuron's activity history.
Long term depression (LTD)	Sustained, use-dependent decrease of the efficiency of a connection between two or more neurons
Long term potentiation (LTP)	Sustained, use-dependent increase of the efficiency of a connection between two or more neurons
Indulgent eating	Indulgent behavior caused by loss of self-control is characterized by time-inconsistent preferences, or a tendency to overweigh short-term rewards relative to more distant ones, and a tendency in the short term to ignore the costs of one's actions. Thus indulgent eating in some case might be the first step of overeating and other eating behavior disorders.
Metaplasticity	Phenomenon by which the activity history of a given synapse determines its susceptibility to further activity-dependent modification as well as the nature of such modification.
Outcome devaluation	Outcome devaluation occurs when a food reward used during training is devalued by allowing free access to it or by pairing it with an aversive consequence such as gastric malaise.
Overeating/hyperphagia	Is the excess food ingestion in relation to the energy that an organism expends, resulting in overweight/obesity phenotype. It might be related to hypothalamic hyperphagia disorders.
Palatability	Is the hedonic reward provided by foods which often varies relative to the homeostatic satisfaction of nutritional, water, or energy needs.
Pattern completion	Ability to recall an entire memory when presented with a partial sensory cue.
Roux-En-Y gastric bypass surgery	Surgical procedure in which the proximal part of the stomach is cut from the rest. The small intestine is then cut and its distal part is attached to the newly formed pouch below the esophagus, while the proximal part (connected to the larger remaining portion of the stomach) is attached further down. This procedure has been successfully employed in humans to treat morbid obesity.
Synaptic pruning	Widespread process of synapse elimination that occurs during childhood and adolescence, in an experience-dependent fashion.
Synaptic stripping	Removal of dysfunctional synapses by activated microglia.
Western diet (also known as cafeteria diet)	Diet used on pre-clinical experiments where the animal self-selects from palatable, readily available foods including cookies, candy, cheese and processed meats. These foods contain a substantial amount of salt, sugar and fat, which are meant to simulate the human Western diet.

subcomponent can be inferred since mammals have innate preference for sweet-flavored solutions over bitter ones independently of their caloric content, and rats learn to prefer a saccharin-sweetened solution over water once it is recognized as safe (Bermúdez-Rattoni, 2004; Yarmolinsky et al., 2009; Drewnowski et al., 2012). Consumption of sucralose, a non-caloric artificial sweetener, induces increases in NAcc dopamine release at levels comparable to sucrose (de Araujo et al., 2008). However, taste palatability alone, independent of its nutritive properties fails to elicit the full rewarding effect of a “good meal”, which integration is dependent upon the summation of relatively independent multisensory “layers of reward”, that include not only taste pleasantness and post-prandial reward, but also visual and olfactory anticipatory cues (de Araujo, 2011).

Post-prandial reward perception is thought to play a central role in the modulation of eating habits (Antoni et al., 2016). In fact, recent evidence has shown that rodents can learn to identify food as rewarding based solely on its caloric content, independently of their taste. For example, ageusis *trpm5*^{-/-} mice, though initially failing to distinguish between water and a sucrose solution, later develop a preference for sucrose that is indistinguishable from that of wild-types (de Araujo et al., 2008; Simon et al., 2008; Domingos et al., 2011). Pre- and post-absorptive signals from the gut that could alter dopaminergic activity and hence account for the taste-independent rewarding value of sugar are thought to be involved (de Araujo et al., 2012). Indeed, recent evidence has shown that the hormone leptin interfered with the ability of sucrose to produce taste-

independent dopaminergic neurons firing. Conversely, other evidences suggest that in addition to its well-established orexygenic effects, the gut peptide ghrelin may have a role in post-prandial reward processing (Müller et al., 2015; Reichelt et al., 2015).

PHc Food Consumption and Neural Plasticity

Post-prandial reward processing in food consumption involves dopamine efflux in the dorsal striatum (de Araujo et al., 2012). In rodents, this region contains distinct neural circuits that are involved in goal-directed behavior, in the case of the dorsomedial striatum, whereas in habit-based behavior, in the case of the dorsolateral striatum (**Figure 2B**). Imbalance in these action-control systems is thought to underlie a wide range of neuropsychiatric disorders (Balleine and O'Doherty, 2010). Indeed, there is an extensive overlap between the neural circuits activated by PHc food and drugs of abuse (Kenny, 2011a). In recent years, efforts have been deployed to unveil whether obesity and drug addiction share some common mechanisms, for instance in the long-term modification of reward-seeking behavior (Benton and Young, 2016). In this regard, one crucial question is to ask whether exposure to PHc foods can produce long-term plastic changes in the neural circuitry underlying goal-directed and habit-based behavior? If PHc foods cause some kind of addiction, a shift towards habit-based behavior is expected. This issue was recently addressed by a group of researchers who exposed rats to restricted access to sweetened condensed milk (i.e., PHc food) during

5 weeks and then measured their sensitivity to outcome-devaluation (Furlong et al., 2014). In this case, the task of outcome-devaluation makes use of an instrumental learning paradigm in which animals learn to lever-press for a food reward; once the task is well learned the outcome—the food pellet—is subsequently devalued by allowing free access to it or by pairing it with an aversive consequence such as gastric malaise; so lever-pressing is expected to diminish in animals using a goal-directed strategy. When the task was accomplished via a habit-based strategy instead, the outcome devaluation will not affect the operant response such as pressing a lever. Interestingly, they observed that animals with previous exposure to PHc food, showed greater persistence in lever pressing compared to controls, suggesting that those animals had acquired a habit-based strategy. Also they showed enhanced activation of the dorsolateral striatum, a region involved in habitual behavior. Accordingly, AMPA or dopamine (D)1-receptors antagonism in the dorsolateral striatum rescued behavior to the level of controls. Therefore these results show that a history of consumption of PHc foods may facilitate a shift towards habitual-type control of behavior (Furlong et al., 2014). Importantly, it has recently been shown that behavioral sensitivity to outcome-devaluation is also compromised in obese young men (Horstmann et al., 2015). A study modeling PHc food in rats showed that high fat diet (HFD) exposure from weaning to adulthood reduced instrumental performance and decreased sensitivity to outcome devaluation, suggesting impaired motivation, increased habitual behavior, or both (Tantot et al., 2017). Importantly, these behavioral impairments could be abolished by training adults with a task that reinforces goal-directed behavior (Tantot et al., 2017).

Chronic consumption of PHc food, as it is the case for drugs of abuse, can lead to long-term modifications in the brain circuits involved in reward-seeking behavior (Kenny, 2011b; Volkow et al., 2013b). But food ingestion, as we mentioned, is a complex behavior involving many multisensory reward “layers”. So what characteristic of PHc food is more likely to cause changes in the brain’s circuitry, and ultimately in behavior? To address this issue, a recent study evaluated whether neuronal modifications observed after sustained consumption of PHc correlated with the hedonic value of food, or with its caloric contents (Guegan et al., 2013). For this, they trained mice to lever-press for food rewards that were either normal chow, hypercaloric or palatable isocaloric food and analyzed dendritic spine morphology. In addition, they compared the persistence of food seeking behavior in the three groups of mice once food restriction was relieved. Interestingly, mice trained to obtain isocaloric palatable food showed higher persistence of lever pressing than the two other groups, while having access to food *ad libitum*. Furthermore, non-rewarded lever-press was also higher in mice presented with palatable isocaloric food, suggesting this diet also promoted impulsive-like behavior. Importantly, this behavioral change was not observed in the KO mice for the cannabinoid receptor type 1 (CB1^{-/-}), suggesting a role for this endocannabinoid receptors in impulsive food-seeking.

When examining dendritic morphology in the three groups, the authors observed that dendritic spine density was increased in the medial prefrontal cortex (PFC) and NAcc shell, regions associated with addictive behavior, in the palatable isocaloric food group, compared to mice that ate hypercaloric food or normal chow. Consistently, this phenomenon was also shown to be dependent on CB1 receptors (Guegan et al., 2013). However, the degree to which neural plasticity mechanisms driven by post-prandial reward interact with those related to learned pleasantness of taste perception remains to be established. It is interesting to note meanwhile, that surgical treatments that have been shown to effectively treat obesity in humans (e.g., bypass surgery) may effectively dampen sweet appetite by interfering with post-prandial striatal dopamine release, as evidenced in a rodent study (Han et al., 2016). In addition, *Roux-En-Y* gastric bypass surgery in rats was shown to alter neural activity in brain regions related to taste perception and reward (Thanos et al., 2015).

As we have reviewed, certain environmental factors and behavior patterns may lead to “food addiction” and ultimately to obesity. Moreover certain lines of evidence suggest that some gene clusters may predispose individuals to both diet induced obesity (DIO) as well as brain inflammation (Heber and Carpenter, 2011). Certain people may therefore be genetically predisposed to absorb fat more efficiently. In addition, DIO by HFD exposure was recently shown to depend on neurotensin, a neuropeptide with significant dopaminergic interactions, and longitudinal studies in humans have shown that pro-neurotensin plasma level is a reliable predictor for the eventual development of obesity (Li et al., 2016). Even though such hereditary view of obesity may slightly downplay the role of behavior and dietary control on obesity, it clearly highlights the fact that a sedentary lifestyle and western diet are at odds with our evolutionary capacity to optimally absorb fats (Bellisari, 2008). In addition, it pinpoints clear pharmacological strategies that may be used in addition to changes in lifestyle and dieting.

Cognitive Consequences of PHc Food Exposure and Increased Adiposity

It has been reported that PHc foods that lead to obesity are related to a reduced ability to express synaptic plasticity in certain brain areas related to cognition (Dingess et al., 2016; Klein et al., 2016; Tran et al., 2016). For instance, chronic HFD consumption disrupts intracellular cascades involved in synaptic plasticity and insulin signaling/glucose homeostasis (Dutheil et al., 2016) and affects neuronal plasticity-related protein levels (Cai et al., 2016). Nutritional imbalance triggered by this diet eventually impacts glutamate neural pathways, up regulating glial glutamate transporters (GLT-1 and GLAST), down regulating glutamate-degrading enzymes, diminishing basal synaptic transmission and hindering NMDA-induced LTD (Valladolid-Acebes et al., 2012).

Consistently, obesogenic dietary factors, such as simple carbohydrate and saturated fatty acids, have been linked to memory impairments and hippocampal dysfunction (Kanoski,

2012; Sobesky et al., 2014) and evidence suggests that the brain may be particularly vulnerable to obesogenic diets during sensitive neurodevelopmental periods such as pre-natal, infancy and adolescence stages (**Figure 2A**; Valladolide-Acebes et al., 2013; Noble and Kanoski, 2016; Reichelt, 2016). In rodents, evidence shows that HFD exposure impairs memory of a variety of behavioral test, such as Morris' water maze, Barnes' maze, radial arm maze, Y- and T-maze, and novel object recognition (Cordner and Tamashiro, 2015). Interestingly, whereas abundant evidence shows that HFD impairs long-term memory and cognitive flexibility in spatial learning tasks (mainly dependent on hippocampus integrity), some learning processes, such as those that include an anxiogenic or aversive component (amygdala-dependent) may actually be enhanced by such diets (**Figure 2B**). For instance a recent study found increased emotional memory and amygdala plasticity in rats exposed to HFD from weaning to adulthood, through a mechanism that is dependent on glucocorticoid receptors in the amygdala (Boitard et al., 2015).

Studies in humans have shown that HFD consumption, obesity and metabolic syndrome are associated with poor cognitive performance in children (Bauer et al., 2015; Martin et al., 2016) and adults (Singh-Manoux et al., 2012; Papachristou et al., 2015; Lehtisalo et al., 2016; Yao et al., 2016), and increases risk for development of dementia (Francis and Stevenson, 2013; Freeman et al., 2014). Intake of a HFD that includes mostly omega-6 and saturated fatty acids is associated with worse performance on a cognitive tasks (Kalmijn et al., 1997) and with increased risk for Alzheimer's disease (Kalmijn et al., 1997; Luchsinger et al., 2002) hypertension and diabetes (Fowler, 2016). In this regards, caloric restriction has been shown to partially revert the HFD effects (Murphy et al., 2014). Individuals adhering to anti-hypertensive diet combined with caloric restriction and exercise show significant improvements in both executive-function memory learning and psychomotor speed when evaluated at 4 months following intervention (Smith et al., 2010). Interestingly, there is strong evidence suggesting that dietary restriction in adult non-human primates has beneficial effects on the preservation of cognitive performance during the course of aging (Colman et al., 2009; Mattison et al., 2012). In addition, a recent meta-analysis suggested that bariatric surgery is generally followed by improved cognitive functions in human patients (Handley et al., 2016), although it should also be warned that under certain circumstances, neuropsychiatric complications, such as increased suicide risk may also occur after this surgical treatment (Peterhänsel et al., 2013; Yen et al., 2014).

New research with animal models has begun to shed light on the neuroinflammatory mechanisms that may underlie the cognitive impairments observed in obese individuals (Castanon et al., 2015). For example, recent evidence in rats showed that fat transplantation produced microglial activation in the hippocampus while lipectomy had opposite effects. The authors went on to show that the cytokine interleukin (IL)-1 positively correlated with adiposity levels as well as cognitive impairments, and IL-1 receptor antagonism rescued the cognitive deficits

observed in these animals (Erion et al., 2014; Sobesky et al., 2014). Furthermore, HFD exposure was recently shown to provoke a decrease in hippocampal dendritic spine density as well as synaptic plasticity deficits due to synaptic stripping by microglia, which could be reversed by diet suspension (Hao et al., 2016).

Prevention and Sensitive Periods to Nutritional Environmental Insults

As is the case for many other diseases, there seems to be critical periods for the development of obesity. Early studies established that gestation, the period between 5 and 7 years of age, and adolescence are critical for the risk of developing long-term obesity (Dietz, 1994), although a more recent longitudinal study suggested that childhood obesity is itself highly dependent on the mother's diet during pregnancy (Glavin et al., 2014). Studies in rats showed that offspring of dams fed with HFD had higher leptin concentration and glucose intolerance along with increased adiposity (Tamashiro et al., 2009). Similarly in mice, offspring of HFD fed dams show strikingly increased preference for sucrose as well as non-caloric sweetener solution when tested as adults. Interestingly, these mice also show increased sensitivity to cocaine and amphetamine, as well as reduced basal dopamine levels in the striatum and the VTA, which is consistent with higher motivation to obtain food reward (Peleg-Raibstein et al., 2016).

At the neurodevelopmental level, adolescence is characterized by extensive experience-dependent synaptic pruning (Petanjek et al., 2011), as well as changes in gliogenesis and myelination (Fields, 2005; Barbarich-Marsteller et al., 2013; Estes and McAllister, 2016). Moreover, it was recently suggested that blood-brain barrier permeability may be increase by HFD exposure (Kanoski et al., 2010; Hsu and Kanoski, 2014) and is differentially modulated during adolescence (Brenhouse and Schwarz, 2016). Some regions, such as the PFC, which matures up until early adulthood, undergo extensive remodeling and functional plasticity during this period (Reichelt, 2016). In recent years, adolescence has also been established as a critical period for the development of obesity and obesity-related cognitive impairments as some of the underlying neural mechanism are starting to be elucidated (Labouesse et al., 2016; Reichelt, 2016). In a series of experiments, mice were fed HFD during adolescence and later tested in novel location recognition memory, a task that is highly dependent on proper hippocampus function and that is particularly sensitive to manipulations in dorsal CA1 (Assini et al., 2009; Vogel-Ciernia and Wood, 2014). When tested as adults, these mice were less efficient than their control counterparts in this task and this difference was observable even after being switched to food restriction during a 5-week period. In contrast, the same HFD treatment had no effect when administered during adulthood. Intriguingly, this impairment in spatial memory was accompanied by increased neural cell adhesion molecule (NCAM, also known as CD56) accumulation and dendritic spine density increase

in the hippocampal CA1 region (Valladolid-Acebes et al., 2013). More recently, adolescent HFD exposure was also shown to alter the levels of the extracellular matrix glycoprotein reelin and impair LTD at PFC synapses (Labouesse et al., 2016). Also it has been observed a diminished neurogenesis and behavioral flexibility in hippocampus-dependent tasks in mice exposed to HFD during adolescence (Boitard et al., 2012). Supporting the notion that PHc food lead to cognitive impairments in particular during vulnerable periods, it has been reported that a HFD supplemented with 10% sucrose was also shown to produce learning and memory impairments in juvenile mice (Xu et al., 2015). More recently, a study demonstrated that rats fed with so-called Western diet (i.e., PHc food) during adolescence had post-traumatic stress responsivity as adults. The study also showed a significant decrease in hippocampal volumes as well as enlarged lateral ventricles in these animals (Kalyan-Masih et al., 2016). Importantly, a promising study showed that by suppressing HFD exposure during adulthood, neurocognitive deterioration seems to be restored in rats even when they were chronically exposed to this diet during adolescence (Boitard et al., 2016).

Outlook, Living in and Harnessing Permissive Obesogenic Environments

Together, these data provide rationale for particular beneficial effects of early educational/psychosocial interventions, as well as a more aggressive campaigning of warning the effects of PHc food consumption targeting sensitive neurodevelopmental periods; i.e., pregnancy, childhood and adolescence. For instance, it was recently demonstrated that when healthy nutrition is presented as choices that are coherent with adolescent values (such as independence from parents or other figures of authority and freedom from the influence of mass advertising by junk food giants companies), USA eight graders were more likely to stick to a healthy dietary choices (Bryan et al., 2016). Additionally, direct negative monetary incentives were also shown to modulate consumer choice by taxation. For example, in an audacious move trying to control the extreme high prevalence of overweight/obesity, and considering that caloric beverages were major sources of energy among children and adults (Stern et al., 2014), the Mexican government announced the implementation a 10% tax on sugar-sweetened beverages as well as on non-essential food with high caloric density, starting on January 2014. Indeed, a recent analysis confirmed that by December 2014, sales had already dropped by 12% and the data suggested that Mexican consumers were indeed switching to cheaper and healthier alternatives (Colchero et al., 2016).

To increase sales, industrialized food enhances rewarding properties by manipulating salt, sugar, fat, flavors and other food additives to make such foods more like addictive commodities (Cocores and Gold, 2009; Gearhardt et al., 2011; Carter et al., 2016). In the other hand, minimal regulation from governmental health agencies limits food industry and so far there is

no public warning about the potential addiction and health problems of PHc food consumption. In this regard, as for other addictive substances like nicotine or alcohol, additional societal support might encourage policy-making bodies to: (a) to start warning about the potential addiction towards PHc food; (b) to regulate PHc food consumption for children, as the first step in modulating adult access to addictive food (Carter et al., 2016); (c) to foster additional research aiming to define the addictive properties of different refined food ingredients/additives as well as its mixture; and (d) to empower consumers by providing clear and straightforward health information in food labels as well as on advertising campaigns.

In summary, recent but indubitable experimental and clinical evidence have documented the deleterious health effects of the permissive obesogenic environment that most western countries are facing, as we have reviewed here, now evidently extending to mental health due to dysregulation in neuronal plasticity (**Figure 2A**). It is clear that our human physiology did not evolved to face constant and ubiquitous challenges imposed by obesogenic environments, resulting in an overweight/obesity pandemic (WHO, 2016a) that is challenging health systems by imposing unprecedented economic loads (OECD, 2014). Thus it is urgent and necessary to develop comprehensive, long lasting and multidimensional societal agendas to control and revert obesogenic environments by: (a) empowering citizens to take knowledge-based decision and become responsible consumers; (b) protecting consumers in vulnerable stages (i.e., pregnant women, children and adolescents) either by taxation, regulation or bans (WHO, 2016b); and last but not least (c) promoting economic growth based in innovation-driven healthy food alternatives.

AUTHOR CONTRIBUTIONS

All authors listed, have made substantial, direct and intellectual contribution to the work, and approved it for publication. In particular: J-PM, LFR-D, GP-L, SD-C, GF, CP-C and KG-R performed literature review. J-PM, GP-L, SD-C and CP-C wrote the manuscript. GP-L designed the figures.

ACKNOWLEDGMENTS

This work was supported by Mexican Council for Science and Technology (CONACYT) grants No. 273553 and 255399 to GP-L, Dirección General de Asuntos del Personal Académico-Universidad Nacional Autónoma de México (DGAPA-UNAM) IN-203616-2 to SD-C and Association Nationale de la Recherche et de la Technologie (ANR-15-CE17-0013 OBETEEN) to GF. This work was partially funded by the Metropolitan Autonomous University (UAM) research and mobility funds to GP-L, and postdoctoral scholarship to J-PM. Additional financial support was provided by CONACYT, DAAD-PROALMEX fund No. 267761 to GP-L, and the Council for Science and Technology of the State of Mexico (COMECYT) scientific and technological research stay fund to GP-L.

REFERENCES

- Abbott, L. F., and Nelson, S. B. (2000). Synaptic plasticity: taming the beast. *Nat. Neurosci.* 3, 1178–1183. doi: 10.1038/81453
- Antoni, R., Johnston, K. L., Collins, A. L., and Robertson, M. D. (2016). Investigation into the acute effects of total and partial energy restriction on postprandial metabolism among overweight/obese participants. *Br. J. Nutr.* 115, 951–959. doi: 10.1017/s0007114515005346
- Assini, F. L., Duzzioni, M., and Takahashi, R. N. (2009). Object location memory in mice: pharmacological validation and further evidence of hippocampal CA1 participation. *Behav. Brain Res.* 204, 206–211. doi: 10.1016/j.bbr.2009.06.005
- Balleine, B. W., and O'Doherty, J. P. (2010). Human and rodent homologies in action control: corticostriatal determinants of goal-directed and habitual action. *Neuropsychopharmacology* 35, 48–69. doi: 10.1038/npp.2009.131
- Barbarich-Marsteller, N. C., Fornal, C. A., Takase, L. F., Bocarsly, M. E., Arner, C., Walsh, B. T., et al. (2013). Activity-based anorexia is associated with reduced hippocampal cell proliferation in adolescent female rats. *Behav. Brain Res.* 236, 251–257. doi: 10.1016/j.bbr.2012.08.047
- Bauer, C. C. C., Moreno, B., González-Santos, L., Concha, L., Barquera, S., and Barrios, F. A. (2015). Child overweight and obesity are associated with reduced executive cognitive performance and brain alterations: a magnetic resonance imaging study in Mexican children. *Pediatr. Obes.* 10, 196–204. doi: 10.1111/ijpo.241
- Bellisari, A. (2008). Evolutionary origins of obesity. *Obes. Rev.* 9, 165–180. doi: 10.1111/j.1467-789x.2007.00392.x
- Benton, D., and Young, H. A. (2016). A meta-analysis of the relationship between brain dopamine receptors and obesity: a matter of changes in behavior rather than food addiction? *Int. J. Obes. (Lond)* 40, S12–S21. doi: 10.1038/ijo.2016.9
- Bermúdez-Rattoni, F. (2004). Molecular mechanisms of taste-recognition memory. *Nat. Rev. Neurosci.* 5, 209–217. doi: 10.1038/nrn1344
- Blackburn, J., Phillips, A., Jakubovic, A., and Fibiger, H. (1986). Increased dopamine metabolism in the nucleus accumbens and striatum following consumption of a nutritive meal but not a palatable non-nutritive saccharin solution. *Pharmacol. Biochem. Behav.* 25, 1095–1100. doi: 10.1016/0091-3057(86)90091-2
- Blumenthal, D. M., and Gold, M. S. (2010). Neurobiology of food addiction. *Curr. Opin. Clin. Nutr. Metab. Care* 13, 359–365. doi: 10.1097/MCO.0b013e32833ad4d4
- Boitard, C., Etchamendy, N., Sauvant, J., Aubert, A., Tronel, S., Marighetto, A., et al. (2012). Juvenile, but not adult exposure to high-fat diet impairs relational memory and hippocampal neurogenesis in mice. *Hippocampus* 22, 2095–2100. doi: 10.1002/hipo.22032
- Boitard, C., Maroun, M., Tantot, F., Cavaroc, A., Sauvant, J., Marchand, A., et al. (2015). Juvenile obesity enhances emotional memory and amygdala plasticity through glucocorticoids. *J. Neurosci.* 35, 4092–4103. doi: 10.1523/JNEUROSCI.3122-14.2015
- Boitard, C., Parkes, S. L., Cavaroc, A., Tantot, F., Castanon, N., Layé, S., et al. (2016). Switching adolescent high-fat diet to adult control diet restores neurocognitive alterations. *Front. Behav. Neurosci.* 10:225. doi: 10.3389/fnbeh.2016.00225
- Brenhouse, H. C., and Schwarz, J. M. (2016). Immunoadolescence: neuroimmune development and adolescent behavior. *Neurosci. Biobehav. Rev.* 70, 288–299. doi: 10.1016/j.neubiorev.2016.05.035
- Bryan, C. J., Yeager, D. S., Hinojosa, C. P., Chabot, A., Bergen, H., Kawamura, M., et al. (2016). Harnessing adolescent values to motivate healthier eating. *Proc. Natl. Acad. Sci. U S A* 113, 10830–10835. doi: 10.1073/pnas.1604586113
- Cai, M., Wang, H., Li, J., Zhang, Y.-L., Xin, L., Li, F., et al. (2016). The signaling mechanisms of hippocampal endoplasmic reticulum stress affecting neuronal plasticity-related protein levels in high fat diet-induced obese rats and the regulation of aerobic exercise. *Brain. Behav. Immun.* 57, 347–359. doi: 10.1016/j.bbi.2016.05.010
- Carlier, N., Marshe, V. S., Cmorejova, J., Davis, C., and Müller, D. J. (2015). Genetic similarities between compulsive overeating and addiction phenotypes: a case for “food addiction”? *Curr. Psychiatry Rep.* 17:96. doi: 10.1007/s11920-015-0634-5
- Carter, A., Hendrikse, J., Lee, N., Yücel, M., Verdejo-Garcia, A., Andrews, Z., et al. (2016). The neurobiology of “food addiction” and its implications for obesity treatment and policy. *Annu. Rev. Nutr.* 36, 105–128. doi: 10.1146/annurev-nutr-071715-050909
- Castanon, N., Luheshi, G., and Layé, S. (2015). Role of neuroinflammation in the emotional and cognitive alterations displayed by animal models of obesity. *Front. Neurosci.* 9:229. doi: 10.3389/fnins.2015.00229
- Citri, A., and Malenka, R. C. (2008). Synaptic plasticity: multiple forms, functions, and mechanisms. *Neuropsychopharmacology* 33, 18–41. doi: 10.1038/sj.npp.1301559
- Cocores, J. A., and Gold, M. S. (2009). The salted food addiction hypothesis may explain overeating and the obesity epidemic. *Med. Hypotheses* 73, 892–899. doi: 10.1016/j.mehy.2009.06.049
- Colchero, M. A., Popkin, B. M., Rivera, J. A., and Ng, S. W. (2016). Beverage purchases from stores in Mexico under the excise tax on sugar sweetened beverages: observational study. *BMJ* 352:h6704. doi: 10.1136/bmj.h6704
- Colman, R. J., Anderson, R. M., Johnson, S. C., Kastman, E. K., Kosmatka, K. J., Beasley, T. M., et al. (2009). Caloric restriction delays disease onset and mortality in rhesus monkeys. *Science* 325, 201–204. doi: 10.1126/science.1173635
- Cordner, Z. A., and Tamashiro, K. L. K. (2015). Effects of high-fat diet exposure on learning and memory. *Physiol. Behav.* 152, 363–371. doi: 10.1016/j.physbeh.2015.06.008
- Creed, M. C., and Lüscher, C. (2013). Drug-evoked synaptic plasticity: beyond metaplasticity. *Curr. Opin. Neurobiol.* 23, 553–558. doi: 10.1016/j.conb.2013.03.005
- Criscitelli, K., and Avena, N. M. (2016). The neurobiological and behavioral overlaps of nicotine and food addiction. *Prev. Med.* 92, 82–89. doi: 10.1016/j.ypmed.2016.08.009
- Davis, C., Curtis, C., Levitan, R. D., Carter, J. C., Kaplan, A. S., and Kennedy, J. L. (2011). Evidence that ‘food addiction’ is a valid phenotype of obesity. *Appetite* 57, 711–717. doi: 10.1016/j.appet.2011.08.017
- de Araujo, I. E. (2011). “Multiple reward layers in food reinforcement,” in *Neurobiology of Sensation and Reward*, ed. J. A. Gottfried (Boca Raton, FL: CRC Press), 263–286.
- de Araujo, I. E., Ferreira, J. G., Tellez, L. A., Ren, X., and Yeckel, C. W. (2012). The gut-brain dopamine axis: a regulatory system for caloric intake. *Physiol. Behav.* 106, 394–399. doi: 10.1016/j.physbeh.2012.02.026
- de Araujo, I. E., Oliveira-Maia, A. J., Sotnikova, T. D., Gainetdinov, R. R., Caron, M. G., Nicolelis, M. A. L., et al. (2008). Food reward in the absence of taste receptor signaling. *Neuron* 57, 930–941. doi: 10.1016/j.neuron.2008.01.032
- Dietz, W. H. (1994). Critical periods in childhood for the development of obesity. *Am. J. Clin. Nutr.* 59, 955–959.
- Dingess, P. M., Darling, R. A., Kurt Dolence, E., Culver, B. W., and Brown, T. E. (2016). Exposure to a diet high in fat attenuates dendritic spine density in the medial prefrontal cortex. *Brain Struct. Funct.* doi: 10.1007/s00429-016-1208-y [Epub ahead of print].
- Domingos, A. I., Vaynshteyn, J., Voss, H. U., Ren, X., Gradinaru, V., Zang, F., et al. (2011). Leptin regulates the reward value of nutrient. *Nat. Neurosci.* 14, 1562–1568. doi: 10.1038/nn.2977
- Drewnowski, A., Mennella, J. A., Johnson, S. L., and Bellisle, F. (2012). Sweetness and food preference. *J. Nutr.* 142, 1142S–1148S. doi: 10.3945/jn.111.149575
- Dutheil, S., Ota, K. T., Wohleb, E. S., Rasmussen, K., and Duman, R. S. (2016). High-fat diet induced anxiety and anhedonia: impact on brain homeostasis and inflammation. *Neuropsychopharmacology* 41, 1874–1887. doi: 10.1038/npp.2015.357
- Erion, J. R., Wosiski-Kuhn, M., Dey, A., Hao, S., Davis, C. L., Pollock, N. K., et al. (2014). Obesity elicits interleukin 1-mediated deficits in hippocampal synaptic plasticity. *J. Neurosci.* 34, 2618–2631. doi: 10.1523/JNEUROSCI.4200-13.2014
- Estes, M. L., and McAllister, A. K. (2016). Maternal immune activation: implications for neuropsychiatric disorders. *Science* 353, 772–777. doi: 10.1126/science.aag3194
- Fields, R. D. (2005). Myelination: an overlooked mechanism of synaptic plasticity? *Neuroscientist* 11, 528–531. doi: 10.1177/1073858405282304

- Fowler, S. P. G. (2016). Low-calorie sweetener use and energy balance: results from experimental studies in animals, and large-scale prospective studies in humans. *Physiol. Behav.* 164, 517–523. doi: 10.1016/j.physbeh.2016.04.047
- Francis, H., and Stevenson, R. (2013). The longer-term impacts of Western diet on human cognition and the brain. *Appetite* 63, 119–128. doi: 10.1016/j.appet.2012.12.018
- Freeman, L. R., Haley-Zitlin, V., Rosenberger, D. S., and Granholm, A.-C. (2014). Damaging effects of a high-fat diet to the brain and cognition: a review of proposed mechanisms. *Nutr. Neurosci.* 17, 241–251. doi: 10.1179/1476830513Y.0000000092
- Furlong, T. M., Jayaweera, H. K., Balleine, B. W., and Corbit, L. H. (2014). Binge-like consumption of a palatable food accelerates habitual control of behavior and is dependent on activation of the dorsolateral striatum. *J. Neurosci.* 34, 5012–5022. doi: 10.1523/JNEUROSCI.3707-13.2014
- García-García, I., Horstmann, A., Jurado, M. A., Garolera, M., Chaudhry, S. J., Margulies, D. S., et al. (2014). Reward processing in obesity, substance addiction and non-substance addiction. *Obes. Rev.* 15, 853–869. doi: 10.1111/obr.12221
- Gearhardt, A. N., Corbin, W. R., and Brownell, K. D. (2009). Preliminary validation of the Yale food addiction scale. *Appetite* 52, 430–436. doi: 10.1016/j.appet.2008.12.003
- Gearhardt, A. N., Corbin, W. R., and Brownell, K. D. (2016). Development of the Yale food addiction scale version 2.0. *Psychol. Addict. Behav.* 30, 113–121. doi: 10.1037/adb0000136
- Gearhardt, A. N., Davis, C., Kushner, R., and Brownell, K. D. (2011). The addiction potential of hyperpalatable foods. *Curr. Drug Abuse. Rev.* 4, 140–145. doi: 10.2174/1874473711104030140
- George, O., Le Moal, M., and Koob, G. F. (2012). Allostasis and addiction: role of the dopamine and corticotropin-releasing factor systems. *Physiol. Behav.* 106, 58–64. doi: 10.1016/j.physbeh.2011.11.004
- Glavin, K., Roelants, M., Strand, B. H., Júlíusson, P. B., Lie, K. K., Helseth, S., et al. (2014). Important periods of weight development in childhood: a population-based longitudinal study. *BMC Public Health* 14:160. doi: 10.1186/1471-2458-14-160
- Guegan, T., Cutando, L., Ayuso, E., Santini, E., Fisone, G., Bosch, F., et al. (2013). Operant behavior to obtain palatable food modifies neuronal plasticity in the brain reward circuit. *Eur. Neuropsychopharmacol.* 23, 146–159. doi: 10.1016/j.euroneuro.2012.04.004
- Han, W., Tellez, L. A., Niu, J., Medina, S., Ferreira, T. L., Zhang, X., et al. (2016). Striatal dopamine links gastrointestinal rerouting to altered sweet appetite. *Cell Metab.* 23, 103–112. doi: 10.1016/j.cmet.2015.10.009
- Handley, J. D., Williams, D. M., Caplin, S., Stephens, J. W., and Barry, J. (2016). Changes in cognitive function following bariatric surgery: a systematic review. *Obes. Surg.* 26, 2530–2537. doi: 10.1007/s11695-016-2312-z
- Hao, S., Dey, A., Yu, X., and Stranahan, A. M. (2016). Dietary obesity reversibly induces synaptic stripping by microglia and impairs hippocampal plasticity. *Brain. Behav. Immun.* 51, 230–239. doi: 10.1016/j.bbi.2015.08.023
- Heber, D., and Carpenter, C. L. (2011). Addictive genes and the relationship to obesity and inflammation. *Mol. Neurobiol.* 44, 160–165. doi: 10.1007/s12035-011-8180-6
- Horstmann, A., Dietrich, A., Mathar, D., Pössel, M., Villringer, A., and Neumann, J. (2015). Slave to habit? Obesity is associated with decreased behavioural sensitivity to reward devaluation. *Appetite* 87, 175–183. doi: 10.1016/j.appet.2014.12.212
- Hernandez, L., and Hoebel, B. (1988). Food reward and cocaine increase extracellular dopamine in the nucleus accumbens as measured by microdialysis. *Life Sci.* 42, 1705–1712. doi: 10.1016/0024-3205(88)90036-7
- Hsu, T. M., and Kanoski, S. E. (2014). Blood-brain barrier disruption: mechanistic links between western diet consumption and dementia. *Front. Aging Neurosci.* 6:88. doi: 10.3389/fnagi.2014.00088
- Iemolo, A., Valenza, M., Tozier, L., Knapp, C. M., Kornetsky, C., Steardo, L., et al. (2012). Withdrawal from chronic, intermittent access to a highly palatable food induces depressive-like behavior in compulsive eating rats. *Behav. Pharmacol.* 23, 593–602. doi: 10.1097/FBP.0b013e328357697f
- Ilfand, J. R., Preuss, H. G., Marcus, M. T., Rourke, K. M., Taylor, W. C., Burau, K., et al. (2009). Refined food addiction: a classic substance use disorder. *Med. Hypotheses* 72, 518–526. doi: 10.1016/j.mehy.2008.11.035
- Johnson, P. M., and Kenny, P. J. (2010). Dopamine D2 receptors in addiction-like reward dysfunction and compulsive eating in obese rats. *Nat. Neurosci.* 13, 635–641. doi: 10.1038/nn.2519
- Jones, S., and Bonci, A. (2005). Synaptic plasticity and drug addiction. *Curr. Opin. Pharmacol.* 5, 20–25. doi: 10.1016/j.coph.2004.08.011
- Kalmijn, S., Feskens, E. J., Launer, L. J., and Kromhout, D. (1997). Longitudinal study of the effect of apolipoprotein e4 allele on the association between education and cognitive decline in elderly men. *BMJ* 314, 34–35. doi: 10.1136/bmj.314.7073.34
- Kalyan-Masih, P., Vega-Torres, J. D., Miles, C., Haddad, E., Rainsbury, S., Baghchechi, M., et al. (2016). Western high-fat diet consumption during adolescence increases susceptibility to traumatic stress while selectively disrupting hippocampal and ventricular volumes. *eneuro* 3: e0125-16.2016 doi: 10.1523/ENEURO.0125-16.2016
- Kanoski, S. E. (2012). Cognitive and neuronal systems underlying obesity. *Physiol. Behav.* 106, 337–344. doi: 10.1016/j.physbeh.2012.01.007
- Kanoski, S. E., Zhang, Y., Zheng, W., and Davidson, T. L. (2010). The effects of a high-energy diet on hippocampal function and blood-brain barrier integrity in the rat. *J. Alzheimers Dis.* 21, 207–219. doi: 10.3233/JAD-2010-091414
- Kauer, J. A., and Malenka, R. C. (2007). Synaptic plasticity and addiction. *Nat. Rev. Neurosci.* 8, 844–858. doi: 10.1038/nrn2234
- Kenny, P. J. (2011a). Common cellular and molecular mechanisms in obesity and drug addiction. *Nat. Rev. Neurosci.* 12, 638–651. doi: 10.1038/nrn3105
- Kenny, P. J. (2011b). Reward mechanisms in obesity: new insights and future directions. *Neuron* 69, 664–679. doi: 10.1016/j.neuron.2011.02.016
- Kesner, R. P., Kirk, R. A., Clark, J. K., Moore, A., and Keefe, K. (2016). Naloxone injections into CA3 disrupt pattern completion associated with relapse from cocaine seeking. *Hippocampus* 26, 892–898. doi: 10.1002/hipo.22570
- Klein, C., Jonas, W., Iggena, D., Empl, L., Rivalan, M., Wiedmer, P., et al. (2016). Exercise prevents high-fat diet-induced impairment of flexible memory expression in the water maze and modulates adult hippocampal neurogenesis in mice. *Neurobiol. Learn. Mem.* 131, 26–35. doi: 10.1016/j.nlm.2016.03.002
- Labouesse, M. A., Lassalle, O., Richetto, J., Iafrati, J., Weber-Stadlbauer, U., Notter, T., et al. (2016). Hypervulnerability of the adolescent prefrontal cortex to nutritional stress via reelin deficiency. *Mol. Psychiatry* doi: 10.1038/mp.2016.193 [Epub ahead of print].
- Lehtisalo, J., Lindström, J., Ngandu, T., Kivipelto, M., Ahtiluoto, S., Ilanne-Parikka, P., et al. (2016). Association of long-term dietary fat intake, exercise and weight with later cognitive function in the Finnish diabetes prevention study. *J. Nutr. Health Aging* 20, 146–154. doi: 10.1007/s12603-015-0565-1
- Li, J., Song, J., Zaytseva, Y. Y., Liu, Y., Rychahou, P., Jiang, K., et al. (2016). An obligatory role for neurotensin in high-fat-diet-induced obesity. *Nature* 533, 411–415. doi: 10.1038/nature17662
- Lisman, J. E., and Grace, A. A. (2005). The hippocampal-VTA loop: controlling the entry of information into long-term memory. *Neuron* 46, 703–713. doi: 10.1016/j.neuron.2005.05.002
- Luchsinger, J. A., Tang, M.-X., Shea, S., and Mayeux, R. (2002). Caloric intake and the risk of Alzheimer disease. *Arch. Neurol.* 59, 1258–1263. doi: 10.1001/archneur.59.8.1258
- Lutter, M., and Nestler, E. J. (2009). Homeostatic and hedonic signals interact in the regulation of food intake. *J. Nutr.* 139, 629–632. doi: 10.3945/jn.108.097618
- Malenka, R. C., and Bear, M. F. (2004). LTP and LTD: an embarrassment of riches. *Neuron* 44, 5–21. doi: 10.1016/j.neuron.2004.09.012
- Mameli, M., and Lüscher, C. (2011). Synaptic plasticity and addiction: learning mechanisms gone awry. *Neuropharmacology* 61, 1052–1059. doi: 10.1016/j.neuropharm.2011.01.036
- Martin, A., Booth, J. N., Young, D., Revie, M., Boyter, A. C., Johnston, B., et al. (2016). Associations between obesity and cognition in the pre-school years. *Obesity (Silver Spring)* 24, 207–214. doi: 10.1002/oby.21329
- Mattison, J. A., Roth, G. S., Beasley, T. M., Tilmont, E. M., Handy, A. M., Herbert, R. L., et al. (2012). Impact of caloric restriction on health and survival in rhesus monkeys from the NIA study. *Nature* 489, 318–321. doi: 10.1038/nature11432
- Morton, G. J., Meek, T. H., and Schwartz, M. W. (2014). Neurobiology of food intake in health and disease. *Nat. Rev. Neurosci.* 15, 367–378. doi: 10.1038/nrn3745

- Müller, T. D., Nogueiras, R., Andermann, M. L., Andrews, Z. B., Anker, S. D., Argente, J., et al. (2015). Ghrelin. *Mol. Metab.* 4, 437–460. doi: 10.1016/j.molmet.2015.03.005
- Murphy, T., Dias, G. P., and Thuret, S. (2014). Effects of diet on brain plasticity in animal and human studies: mind the gap. *Neural Plast.* 2014:563160. doi: 10.1155/2014/563160
- Nelson, S. B., and Turrigiano, G. G. (2008). Strength through diversity. *Neuron* 60, 477–482. doi: 10.1016/j.neuron.2008.10.020
- Noble, E. E., and Kanoski, S. E. (2016). Early life exposure to obesogenic diets and learning and memory dysfunction. *Curr. Opin. Behav. Sci.* 9, 7–14. doi: 10.1016/j.cobeha.2015.11.014
- OECD. (2014). *OBESITY Update*. Paris: OECD Publishing.
- Papachristou, E., Ramsay, S. E., Lennon, L. T., Papacosta, O., Iliffe, S., Whincup, P. H., et al. (2015). The relationships between body composition characteristics and cognitive functioning in a population-based sample of older British men. *BMC Geriatr.* 15:172. doi: 10.1186/s12877-015-0169-y
- Peleg-Raibstein, D., Sarker, G., Litwan, K., Krämer, S. D., Ametamey, S. M., Schibli, R., et al. (2016). Enhanced sensitivity to drugs of abuse and palatable foods following maternal overnutrition. *Transl. Psychiatry* 6:e911. doi: 10.1038/tp.2016.176
- Pérez-Otaño, I., and Ehlers, M. D. (2005). Homeostatic plasticity and NMDA receptor trafficking. *Trends Neurosci.* 28, 229–238. doi: 10.1016/j.tins.2005.03.004
- Petanjek, Z., Judas, M., Simic, G., Rasin, M. R., Uylings, H. B. M., Rakic, P., et al. (2011). Extraordinary neoteny of synaptic spines in the human prefrontal cortex. *Proc. Natl. Acad. Sci. U S A* 108, 13281–13286. doi: 10.1073/pnas.1105108108
- Peterhansel, C., Petroff, D., Klinitzke, G., Kersting, A., and Wagner, B. (2013). Risk of completed suicide after bariatric surgery: a systematic review. *Obes. Rev.* 14, 369–382. doi: 10.1111/obr.12014
- Reichelt, A. C. (2016). Adolescent maturational transitions in the prefrontal cortex and dopamine signaling as a risk factor for the development of obesity and high fat/high sugar diet induced cognitive deficits. *Front. Behav. Neurosci.* 10:189. doi: 10.3389/fnbeh.2016.00189
- Reichelt, A. C., Westbrook, R. F., and Morris, M. J. (2015). Integration of reward signalling and appetite regulating peptide systems in the control of food-cue responses. *Br. J. Pharmacol.* 172, 5225–5238. doi: 10.1111/bph.13321
- Reimers, J. M., Loweth, J. A., and Wolf, M. E. (2014). BDNF contributes to both rapid and homeostatic alterations in AMPA receptor surface expression in nucleus accumbens medium spiny neurons. *Eur. J. Neurosci.* 39, 1159–1169. doi: 10.1111/ejn.12422
- Robinson, M. J., Fischer, A. M., Ahuja, A., Lesser, E. N., and Maniates, H. (2016). Roles of “wanting” and “liking” in motivating behavior: gambling, food and drug addictions. *Curr. Top. Behav. Neurosci.* 27, 105–136. doi: 10.1007/7854_2015_387
- Rossetti, C., Spena, G., Halfon, O., and Boutrel, B. (2014). Evidence for a compulsive-like behavior in rats exposed to alternate access to highly preferred palatable food. *Addict. Biol.* 19, 975–985. doi: 10.1111/adb.12065
- Russo, S., and Nestler, E. (2013). The brain reward circuitry in mood disorders. *Nat. Rev. Neurosci.* 14, 609–625. doi: 10.1038/nrn3381
- Schulte, E. M., Avena, N. M., and Gearhardt, A. N. (2015). Which foods may be addictive? The roles of processing, fat content, and glycemic load. *PLoS One* 10:e0117959. doi: 10.1371/journal.pone.0117959
- Sehgal, M., Song, C., Ehlers, V. L., and Moyer, J. R. Jr. (2013). Learning to learn - intrinsic plasticity as a metaplasticity mechanism for memory formation. *Neurobiol. Learn. Mem.* 105, 186–199. doi: 10.1016/j.nlm.2013.07.008
- Simon, S. A., de Araujo, I. E., Stapleton, J. R., and Nicolelis, M. A. L. (2008). Multisensory processing of gustatory stimuli. *Chemosens. Percept.* 1, 95–102. doi: 10.1007/s12078-008-9014-4
- Singh-Manoux, A., Czernichow, S., Elbaz, A., Dugravot, A., Sabia, S., Hagger-Johnson, G., et al. (2012). Obesity phenotypes in midlife and cognition in early old age: the Whitehall II cohort study. *Neurology* 79, 755–762. doi: 10.1212/WNL.0b013e3182661f63
- Smith, P. J., Blumenthal, J. A., Babyak, M. A., Craighead, L., Welsh-Bohmer, K. A., Browndyke, J. N., et al. (2010). Effects of the dietary approaches to stop hypertension diet, exercise and caloric restriction on neurocognition in overweight adults with high blood pressure. *Hypertension* 55, 1331–1338. doi: 10.1161/HYPERTENSIONAHA.109.146795
- Sobesky, J. L., Barrientos, R. M., De May, H. S., Thompson, B. M., Weber, M. D., Watkins, L. R., et al. (2014). High-fat diet consumption disrupts memory and primes elevations in hippocampal IL-1 β , an effect that can be prevented with dietary reversal or IL-1 receptor antagonism. *Brain Behav. Immun.* 42, 22–32. doi: 10.1016/j.bbi.2014.06.017
- Stern, D., Piernas, C., Barquera, S., Rivera, J. A., and Popkin, B. M. (2014). Caloric beverages were major sources of energy among children and adults in Mexico, 1999–2012. *J. Nutr.* 144, 949–956. doi: 10.3945/jn.114.190652
- Stoeckel, L. E., Weller, R. E., Cook, E. W. III, Twieg, D. B., Knowlton, R. C., and Cox, J. E. (2008). Widespread reward-system activation in obese women in response to pictures of high-calorie foods. *Neuroimage* 41, 636–647. doi: 10.1016/j.neuroimage.2008.02.031
- Sun, X., and Wolf, M. E. (2009). Nucleus accumbens neurons exhibit synaptic scaling that is occluded by repeated dopamine pre-exposure. *Eur. J. Neurosci.* 30, 539–550. doi: 10.1111/j.1460-9568.2009.06852.x
- Takeuchi, T., Duszkievicz, A. J., Sonneborn, A., Spooner, P. A., Yamasaki, M., Watanabe, M., et al. (2016). Locus coeruleus and dopaminergic consolidation of everyday memory. *Nature* 537, 357–362. doi: 10.1038/nature19325
- Tamashiro, K. L. K., Terrillion, C. E., Hyun, J., Koenig, J. I., and Moran, T. H. (2009). Prenatal stress or high-fat diet increases susceptibility to diet-induced obesity in rat offspring. *Diabetes* 58, 1116–1125. doi: 10.2337/db08-1129
- Tang, J., and Dani, J. A. (2009). Dopamine enables *in vivo* synaptic plasticity associated with the addictive drug nicotine. *Neuron* 63, 673–682. doi: 10.1016/j.neuron.2009.07.025
- Tantot, F., Parkes, S. L., Marchand, A. R., Boitard, C., Naneix, F., Layé, S., et al. (2017). The effect of high-fat diet consumption on appetitive instrumental behavior in rats. *Appetite* 108, 203–211. doi: 10.1016/j.appet.2016.10.001
- Thanos, P. K., Michaelides, M., Subrize, M., Miller, M. L., Bellezza, R., Cooney, R. N., et al. (2015). Roux-en-Y gastric bypass alters brain activity in regions that underlie reward and taste perception. *PLoS One* 10:e0125570. doi: 10.1371/journal.pone.0125570
- Tran, D. Q., Tse, E. K., Kim, M. H., and Belsham, D. D. (2016). Diet-induced cellular neuroinflammation in the hypothalamus: mechanistic insights from investigation of neurons and microglia. *Mol. Cell. Endocrinol.* 438, 18–26. doi: 10.1016/j.mce.2016.05.015
- Tulloch, A. J., Murray, S., Vaicekonyte, R., and Avena, N. M. (2015). Neural responses to macronutrients: hedonic and homeostatic mechanisms. *Gastroenterology* 148, 1205–1218. doi: 10.1053/j.gastro.2014.12.058
- Valladolid-Acebes, I., Fole, A., Martín, M., Morales, L., Cano, M. V., Ruiz-Gayo, M., et al. (2013). Spatial memory impairment and changes in hippocampal morphology are triggered by high-fat diets in adolescent mice. Is there a role of leptin? *Neurobiol. Learn. Mem.* 106, 18–25. doi: 10.1016/j.nlm.2013.06.012
- Valladolid-Acebes, I., Merino, B., Principato, A., Fole, A., Barbas, C., Lorenzo, M. P., et al. (2012). High-fat diets induce changes in hippocampal glutamate metabolism and neurotransmission. *Am. J. Physiol. Endocrinol. Metab.* 302, E396–E402. doi: 10.1152/ajpendo.00343.2011
- Vogel-Ciernia, A., and Wood, M. A. (2014). Examining object location and object recognition memory in mice. *Curr. Protoc. Neurosci.* 69, 8.31.1–8.31.17. doi: 10.1002/0471142301.ns0831s69
- Volkow, N. D., Wang, G.-J., Tomasi, D., and Baler, R. D. (2013a). The addictive dimensionality of obesity. *Biol. Psychiatry* 73, 811–818. doi: 10.1016/j.biopsych.2012.12.020
- Volkow, N. D., Wang, G. J., Tomasi, D., and Baler, R. D. (2013b). Obesity and addiction: neurobiological overlaps. *Obes. Rev.* 14, 2–18. doi: 10.1111/j.1467-789x.2012.01031.x
- Volkow, N. D., and Wise, R. A. (2005). How can drug addiction help us understand obesity? *Nat. Neurosci.* 8, 555–560. doi: 10.1038/nn1452
- WHO. (2016a). *WHO | Obesity and Overweight*. Geneva: World Health Organization.
- WHO. (2016b). *WHO | WHO Urges Global Action to Curtail Consumption and Health Impacts of Sugary Drinks*. Geneva: World Health Organization.
- Xu, B.-L., Wang, R., Ma, L.-N., Dong, W., Zhao, Z.-W., Zhang, J.-S., et al. (2015). Effects of caloric intake on learning and memory function in

- juvenile C57BL/6J mice. *Biomed Res. Int.* 2015:759803. doi: 10.1155/2015/759803
- Yao, Q., Jiang, G.-X., Zhou, Z.-M., Chen, J.-M., and Cheng, Q. (2016). Metabolic syndrome and mild cognitive impairment: a case-control study among elderly in a shanghai suburb. *J. Alzheimers Dis.* 51, 1175–1182. doi: 10.3233/JAD-150920
- Yarmolinsky, D. A., Zuker, C. S., and Ryba, N. J. P. (2009). Common sense about taste: from mammals to insects. *Cell* 139, 234–244. doi: 10.1016/j.cell.2009.10.001
- Yen, Y.-C., Huang, C.-K., and Tai, C.-M. (2014). Psychiatric aspects of bariatric surgery. *Curr. Opin. Psychiatry* 27, 374–379. doi: 10.1097/YCO.0000000000000085

Conflict of Interest Statement: The authors declare that the research was conducted in the absence of any commercial or financial relationships that could be construed as a potential conflict of interest.

Copyright © 2017 Morin, Rodríguez-Durán, Guzmán-Ramos, Perez-Cruz, Ferreira, Diaz-Cintra and Pacheco-López. This is an open-access article distributed under the terms of the Creative Commons Attribution License (CC BY). The use, distribution and reproduction in other forums is permitted, provided the original author(s) or licensor are credited and that the original publication in this journal is cited, in accordance with accepted academic practice. No use, distribution or reproduction is permitted which does not comply with these terms.