



**HAL**  
open science

## Long term phosphorus dynamics in a French organic cropping system network

Claire Jouany, Jean-François Vian, Laetitia Fourrié, Maëlle Le Bras, Blaise Leclerc, Bruno Pontier, Loïc Prieur

### ► To cite this version:

Claire Jouany, Jean-François Vian, Laetitia Fourrié, Maëlle Le Bras, Blaise Leclerc, et al.. Long term phosphorus dynamics in a French organic cropping system network. Congrès annuel de la société Canadienne de science du sol, Jun 2017, Peterborough, Canada. 1 p. hal-01605300

**HAL Id: hal-01605300**

**<https://hal.science/hal-01605300>**

Submitted on 5 Jun 2020

**HAL** is a multi-disciplinary open access archive for the deposit and dissemination of scientific research documents, whether they are published or not. The documents may come from teaching and research institutions in France or abroad, or from public or private research centers.

L'archive ouverte pluridisciplinaire **HAL**, est destinée au dépôt et à la diffusion de documents scientifiques de niveau recherche, publiés ou non, émanant des établissements d'enseignement et de recherche français ou étrangers, des laboratoires publics ou privés.



Distributed under a Creative Commons Attribution - ShareAlike 4.0 International License

C. Jouany<sup>1</sup>, J.F. Vian<sup>2</sup>, L. Fourrié<sup>3</sup>, M. Le Bras<sup>4</sup>, B. Leclerc<sup>5</sup>, B. Pontier<sup>6</sup>, L. Prieur<sup>7</sup>

- <sup>1</sup>: INRA, UMR 1248 AGIR, Université de Toulouse, INP-ENSAT, F-31326 Castanet-Tolosan Cedex
- <sup>2</sup>: ISARA-Lyon, AgroEcology & Environment, 23 rue Jean Baldassini 69364 Lyon
- <sup>3</sup>: Institut Technique de l'Agriculture Biologique, 2485 Route des Pécolets, 26800 Etoile sur Rhône, France
- <sup>4</sup>: Chambre d'agriculture, 10 rue Dieudonné Costes, 28008 Chartres Cedex, France
- <sup>5</sup>: Institut Technique de l'Agriculture Biologique, 8 rue Costo Caoudo, 84160 Cucuron, France
- <sup>6</sup>: EPL La Saussaye 28630 Sours, France
- <sup>7</sup>: CREAB, LEGTA Auch-Baulieu, route de Mirande 32020 Auch, Cedex 09, France



## Introduction

- P management is a major issue for organic farming (OF) systems. Maintenance of acceptable Soil Test Phosphorus (STP) levels over the long term is considered a key criterion for sustainability evaluation.
- Fertilization strategies are chosen according to the cropping system:
  - High Input Productive systems** : supply of organic fertilizers to compensate for P output and maintain STP at acceptable level.
  - Low Input Autonomous systems**: no fertilization or low level and use of Fabaceae for N supply,

## Objectives

- To analyze and compare the medium to long term dynamics of STP for OF cropping systems managed under contrasted fertilization regimes.
- The study is part of **InnovAB** a national project which aims at testing innovative techniques for soil fertility management in OF systems at several sites in France.

## Materials & Methods

### La Saussaye

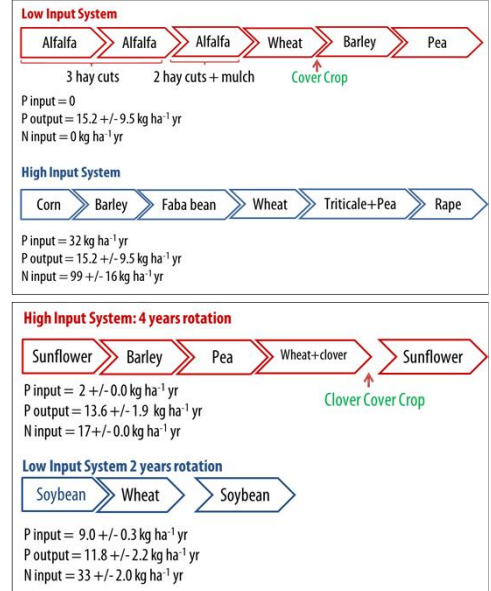


2010 - 2017; 3 repetitions.  
Silty clay loam;  
7.3 < pH < 8.3; CaCO<sub>3</sub> (0.1 > 12%)

### La Hourre



2002-2016; 2 repetitions  
Silty clay loam;  
pH = 8.3; CaCO<sub>3</sub> (0.1 > 12%)



- Olsen P on 0-30 cm soil horizon; cumulative P budget = Sum of annual P budgets (Input-Output)
- Outputs are calculated from grains yield and P content.

## Results & Discussion

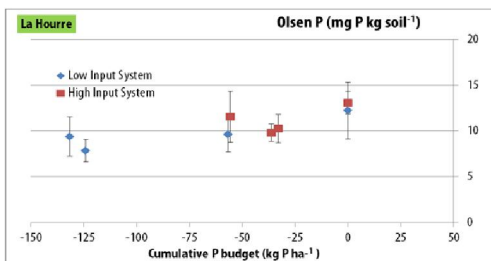
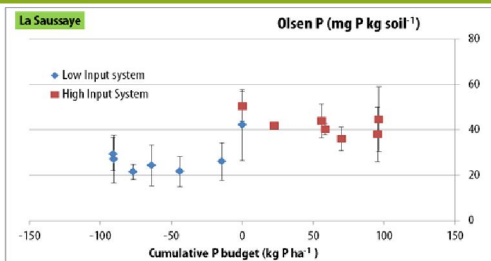


Figure 1: Relationship between Olsen P and cumulative P budget calculated between 2010 and 2017 (La Saussaye) and 2002-2017 (La Hourre), with cumulative P budget = Sum of annual P budgets (Input-Output)

- Annual P budgets (Input-Output, kg P ha<sup>-1</sup> yr) were highly contrasted according to sites and system (Mat & Met) : negative for LI systems at both sites and for HI system at La Hourre ; they are positive at La Saussaye for HI system.
- Olsen P dynamics were variable according to sites and P budgets (Fig 1): we observed a continuous decrease with time for both systems at both sites.
- Changes in Olsen P associated with removal of 1 kg P ha<sup>-1</sup> differed greatly among sites: 0.04 mg P at La Hourre 0.13 mg P at La Saussaye.
- For low input systems, at both sites, STP decreased with decreasing cumulative P budget ; similar pattern was observed for La Hourre HI where it remained negative ; at that site fertilization regime did not compensate for outputs (Fig.1).
- For La Saussaye HI, although cumulative P budgets remained positive, there was no increase in P Olsen as would be expected (Messiga et al., 2015) (Fig.1).

## Conclusion

- Low fertilization regime results in a continuous decrease of STP as soil P deficit increases; P dynamics in low input OF systems is similar to that of conventional ones. The P budget model is validated at both sites.
- The absence of a direct relationship between Olsen P and cumulative P budgets at La Saussaye questions the P fertilizing value of organic manures and / or the capacity of STP to provide adequate diagnostic of Soil Plant Available P when organic manure is supplied on carbonated soils.

## Reference

- Messiga et al. (2015) AMBIO. 44:252–262.