



HAL
open science

Should LEK be shared in a changing world? Evidences from an ethnobotanical survey in Morocco

Julien Blanco, Stéphanie M. Carrière

► **To cite this version:**

Julien Blanco, Stéphanie M. Carrière. Should LEK be shared in a changing world? Evidences from an ethnobotanical survey in Morocco. 58. Annual meeting of the Society for Economic Botany (SEB), Jun 2017, Bragança, Portugal. 14 p. hal-01604426

HAL Id: hal-01604426

<https://hal.science/hal-01604426v1>

Submitted on 5 Jun 2020

HAL is a multi-disciplinary open access archive for the deposit and dissemination of scientific research documents, whether they are published or not. The documents may come from teaching and research institutions in France or abroad, or from public or private research centers.

L'archive ouverte pluridisciplinaire **HAL**, est destinée au dépôt et à la diffusion de documents scientifiques de niveau recherche, publiés ou non, émanant des établissements d'enseignement et de recherche français ou étrangers, des laboratoires publics ou privés.



Distributed under a Creative Commons Attribution - ShareAlike 4.0 International License

Should LEK be shared in a changing world?

Evidences from an ethnobotanical survey in Morocco

Julien BLANCO¹, Stephanie M. Carrière²

¹Post-doc – Dynafor lab, INRA Toulouse, France
julien.blanco@inra.fr

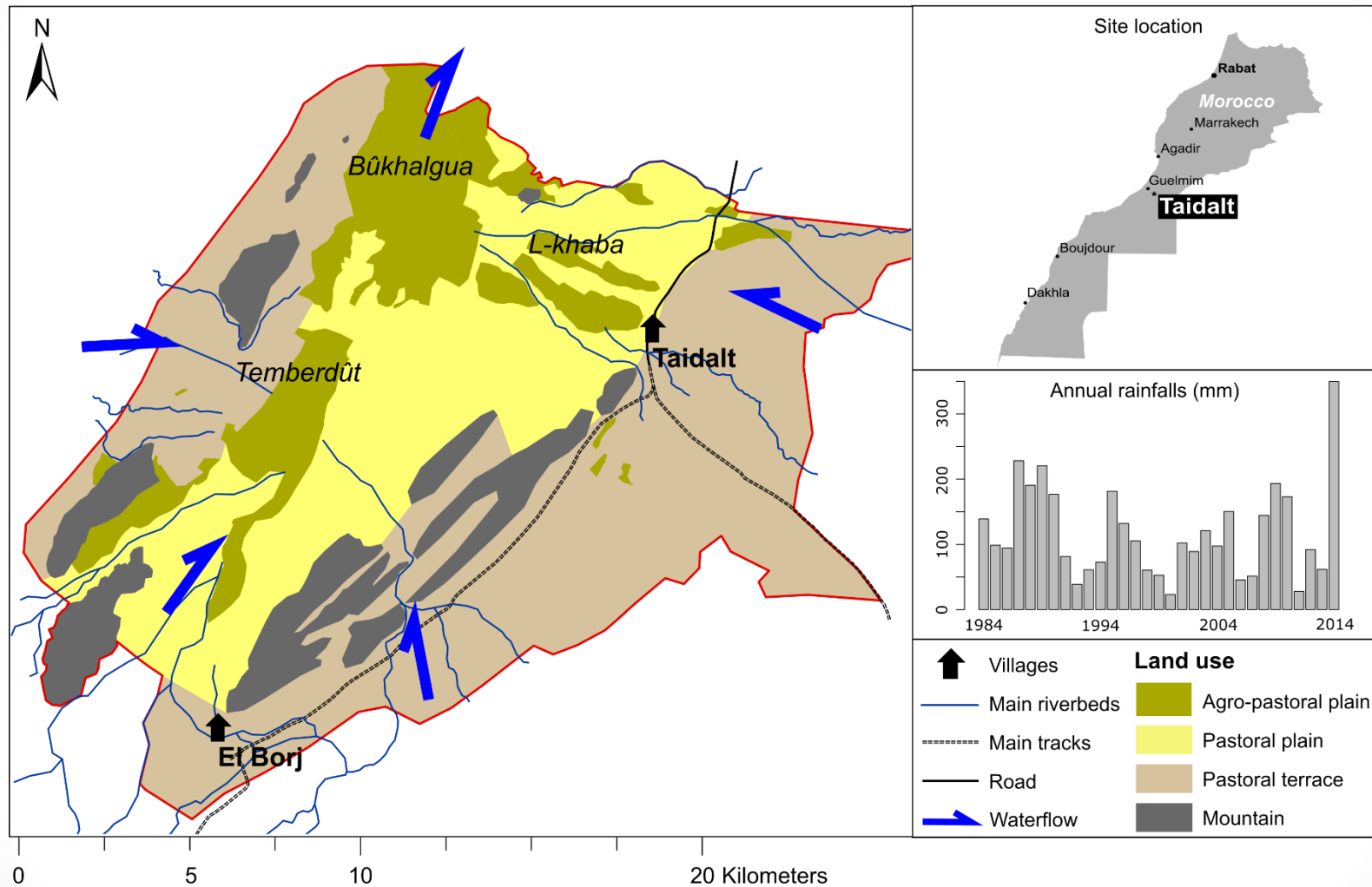
²Researcher – GRED lab, IRD Montpellier, France
stephanie.carriere@ird.fr



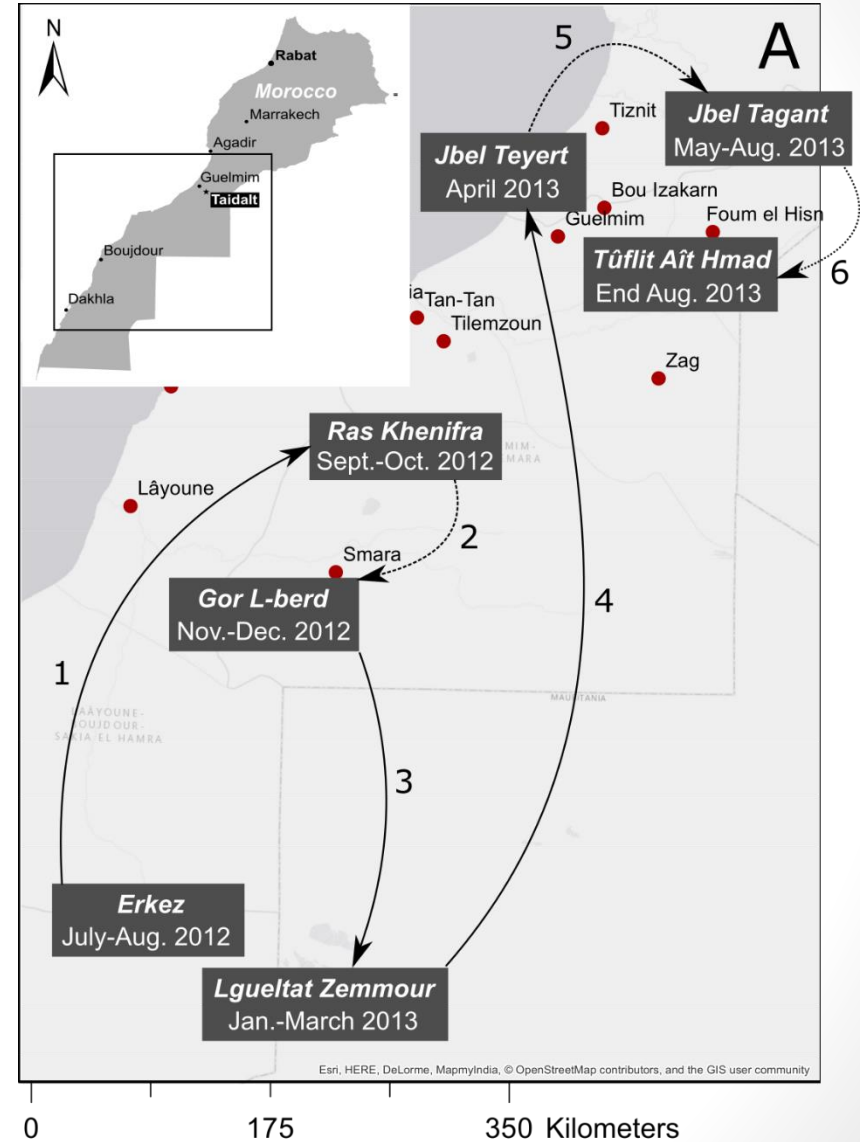
- Very dry and hot climate (<100 mm/year)
- A very high rainfall variability and uncertainty

How to sustain a sustainable livelihood in such uncertain environments?

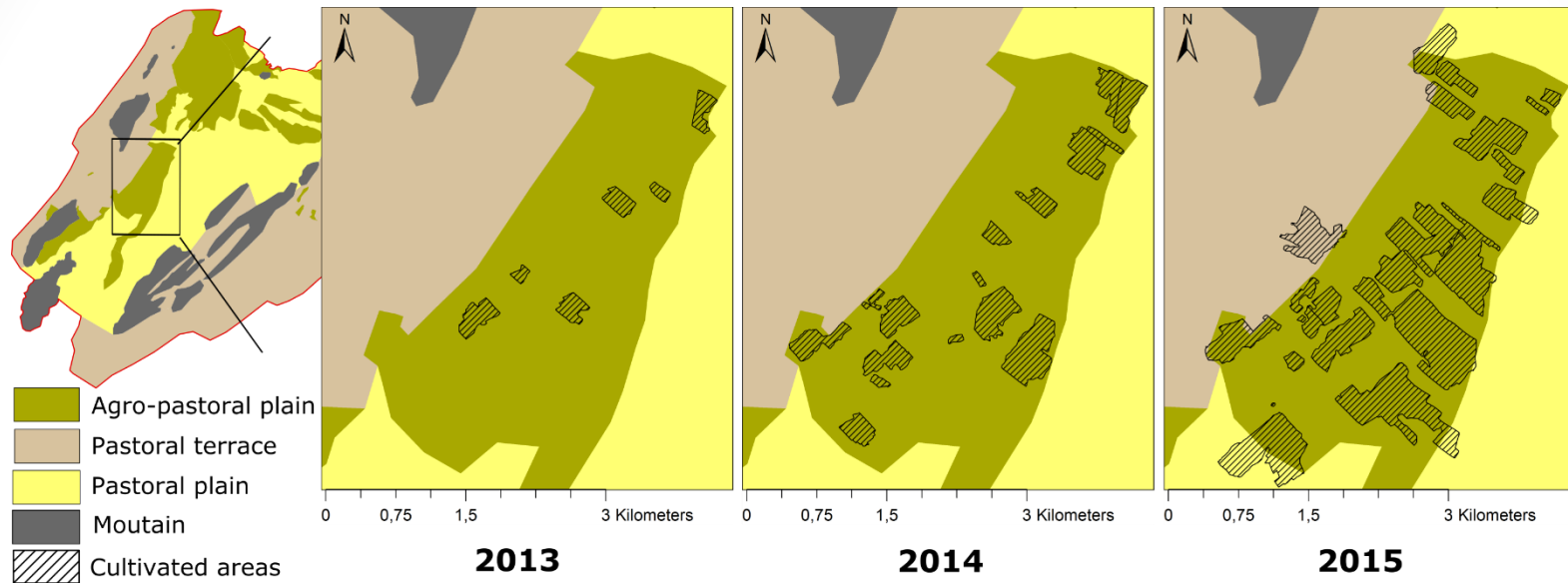
The *Ighuweln* agro-pastoral landscape in Southern Morocco



Agro-pastoralists track environmental variability



Farmers practice occasional and opportunistic swamp farming



Plants are a key component for local livelihoods



- People have an opportunistic strategy for MAPs gathering

Is there any strategy for LEK distribution to adapt to uncertainty?

- Q1: Distribution between plant species? *ecological apparency hypothesis*
- Q2: Distribution between people? *intra-cultural variations of LEK*
- Q3: Are LEK declining because of changes in the community?

LEK assessments: free-listings and semi-structured interviews

- Interviews with 37 sedentary informants
 - ✓ 19 males and 18 females
 - ✓ From 21 to 90 year-old
 - ✓ Former nomads and permanently settled-people
- Free-lists analyses (FLAME add-on)
 - ✓ Smith salience index based on ethnospecies (Smith and Borgatti, 1997)
- Interview analyses
 - ✓ Use Knowledge Index (UKI) for each informant and category of use (medicinal, technological, construction, edible)



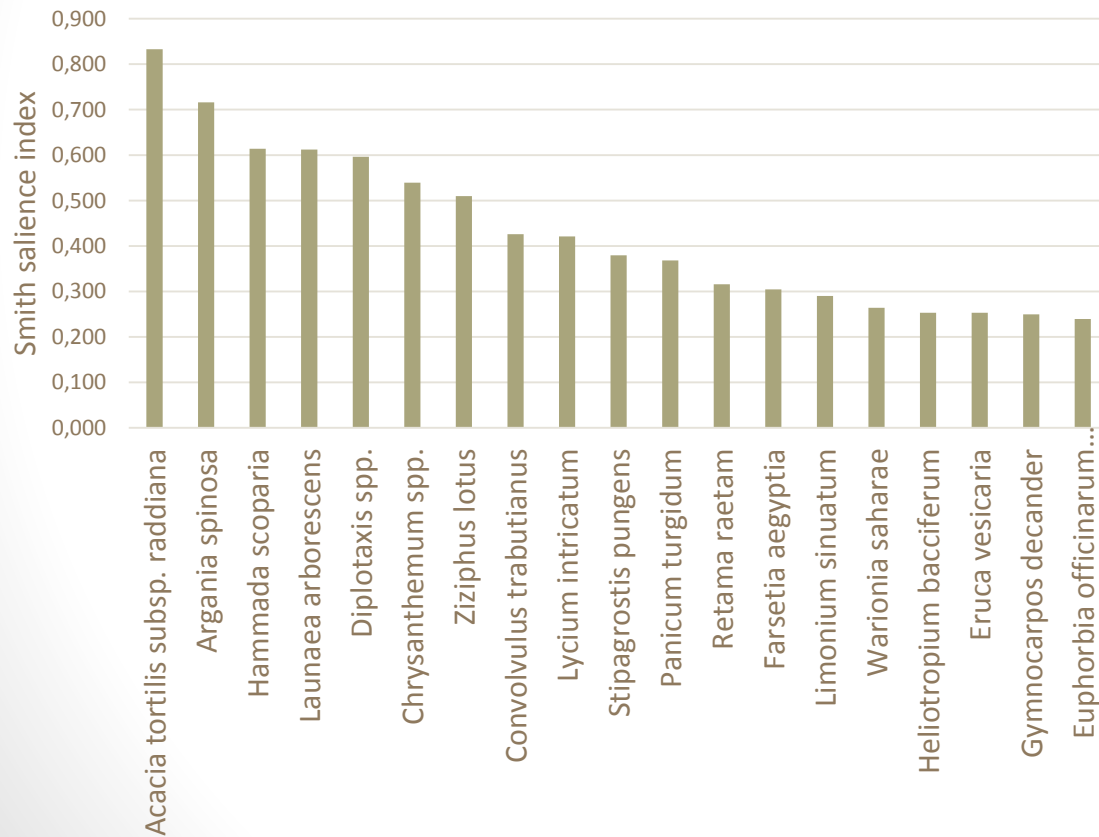
Vegetation survey around the village

- Performed in 2013 (during a dry year)
- 141 square plots (50x50 m) over a radius of 10 km from the village
- All plant species recorded
 - ✓ Plant species frequency
 - ✓ Plant species Abundance-dominance index (Braun-Blanquet, 1964)



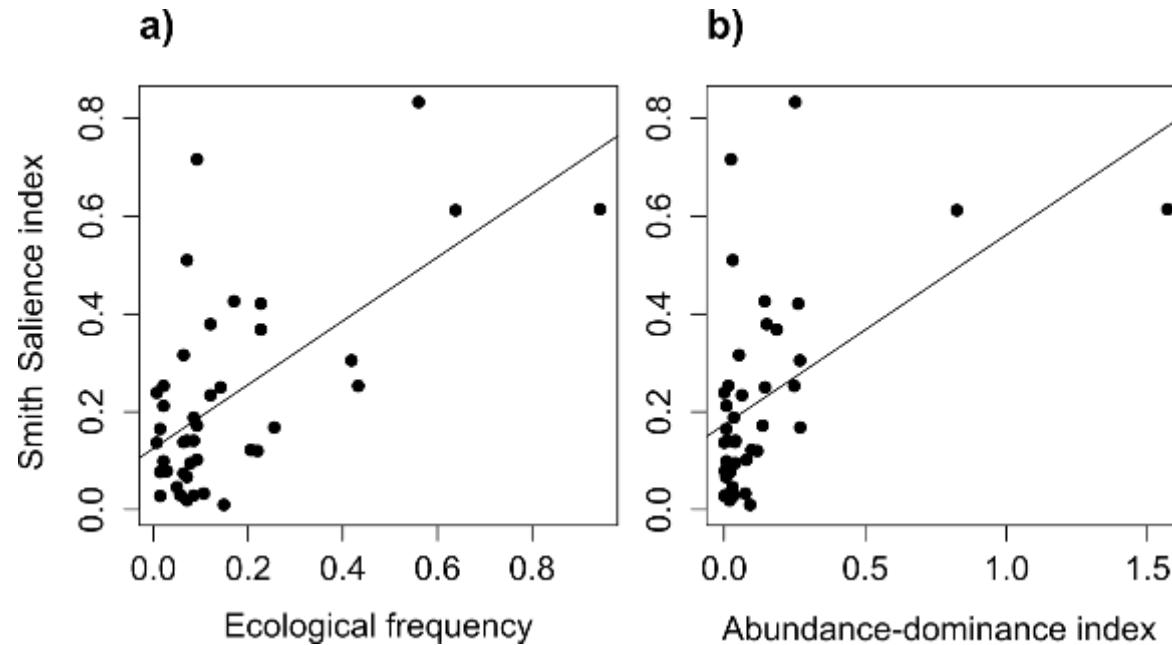
Plant cultural importance

- A total of 164 ethnosppecies cited by informants
 - ✓ 72% were identified at the species & 17% at the genus level
 - ✓ 43 botanical families (Compositae, Leguminosae, Amaranthaceae, Brassicacea)



The ecological apparency hypothesis

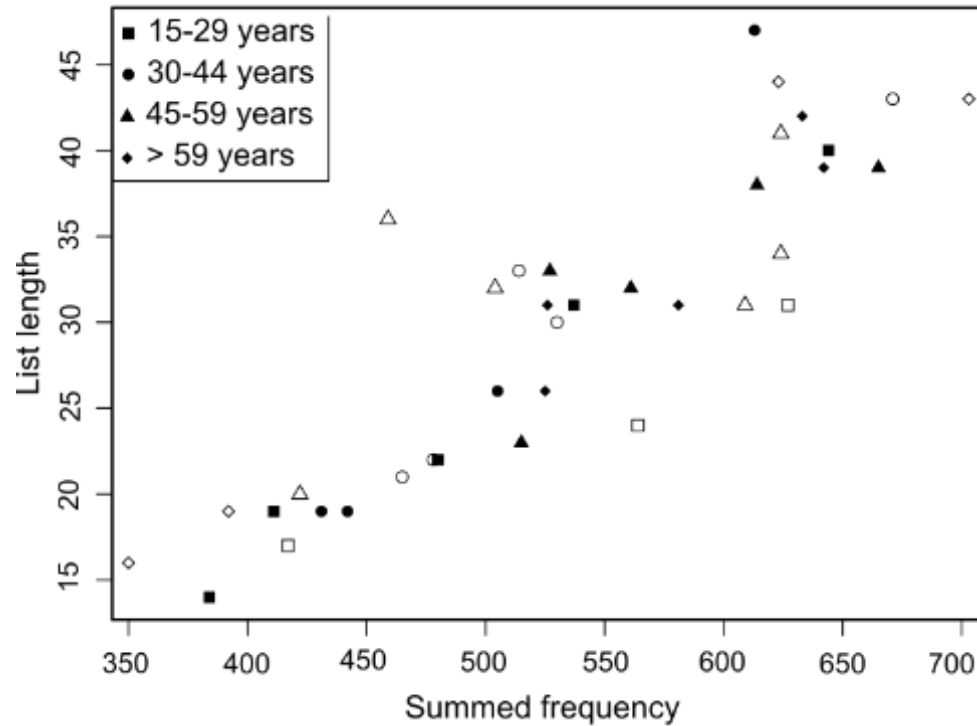
- A total of 71 species were identified (6.7 ± 4.6 SD/plot)



- The ecological apparency hypothesis was verified

LEK distribution among informants (1)

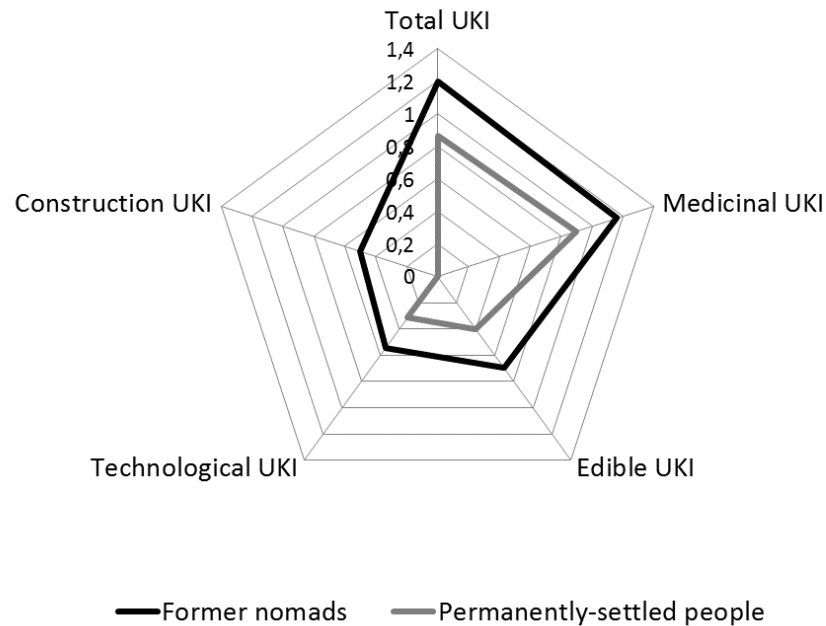
- Men cited 30.1 (± 9.2 SD) and women cited 29.8 (± 9.4 SD) on average



- No influence of gender, age, marital status or occupation

LEK distribution among informants (2)

- Significant difference between former nomads and permanently-settled people



- LEK are influenced by the connection of people with the learning environment (Ohmagari and Berkes, 1997)

Conclusion

- LEK depends of plant availability in drylands
 - ✓ But availability may vary in time
 - ✓ But apparency may also depends on plant visibility
- LEK was homogeneously distributed among people
 - ✓ LEK is easily shared and transmitted to people who needs it
 - ✓ It could constitute an adaptation to unpredictable environments
 - ✓ Transmission patterns should be better informed (through network analyses)
- LEK appears to be conditioned by people interaction with their environment
 - ✓ Are nomads people more knowledgeable than sedentary ones?
 - ✓ Is loss of LEK an on-going process in this region?

Thank you for your attention

