



HAL
open science

From muscle to meat: physiological and metabolic basis

Michel Jacques M.J. Duclos, Cécile Berri

► To cite this version:

Michel Jacques M.J. Duclos, Cécile Berri. From muscle to meat: physiological and metabolic basis. 1. Advencia academy : "Nutritionist: a challenging job! Feeding an ecosystem to transform feedstuffs into animal proteins", European Association of Animal Production (EAAP). ESP., May 2017, Barcelone, Spain. 37 diapos. hal-01604313

HAL Id: hal-01604313

<https://hal.science/hal-01604313>

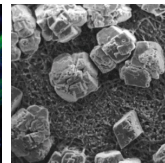
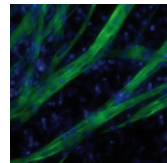
Submitted on 5 Jun 2020

HAL is a multi-disciplinary open access archive for the deposit and dissemination of scientific research documents, whether they are published or not. The documents may come from teaching and research institutions in France or abroad, or from public or private research centers.

L'archive ouverte pluridisciplinaire **HAL**, est destinée au dépôt et à la diffusion de documents scientifiques de niveau recherche, publiés ou non, émanant des établissements d'enseignement et de recherche français ou étrangers, des laboratoires publics ou privés.



Distributed under a Creative Commons Attribution - ShareAlike 4.0 International License



From muscle to meat: physiological and metabolic basis

M. J. DUCLOS & C. BERRI

Unité de Recherches Avicoles (Avian Research Unit)

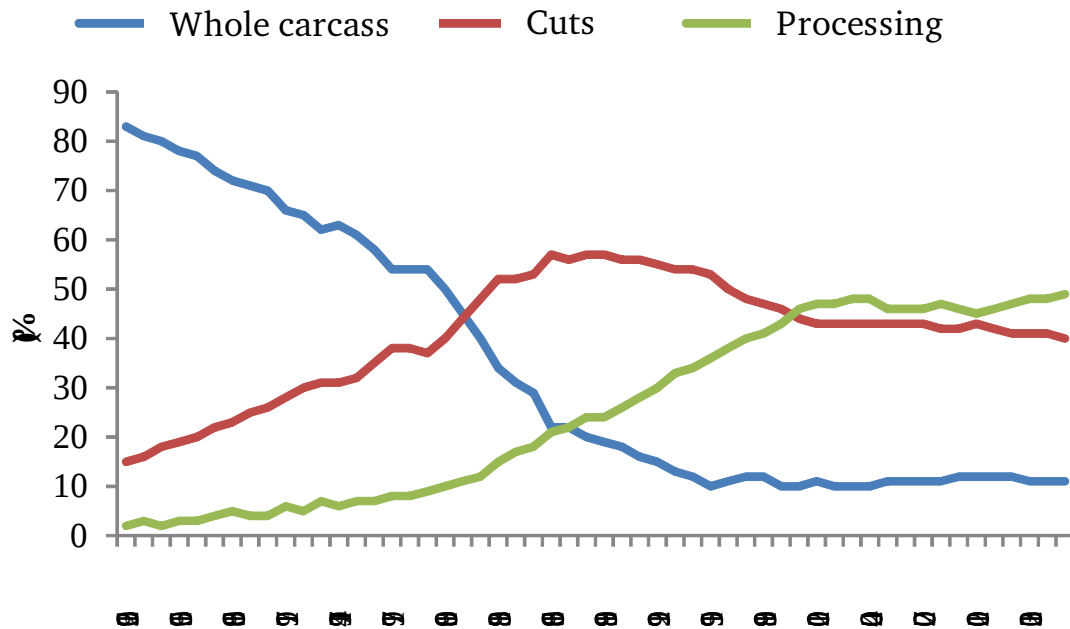
URA, INRA, Nouzilly, France



Context

Increasing demand in poultry meat worldwide (+2%/year)
Rapid evolution of the market share

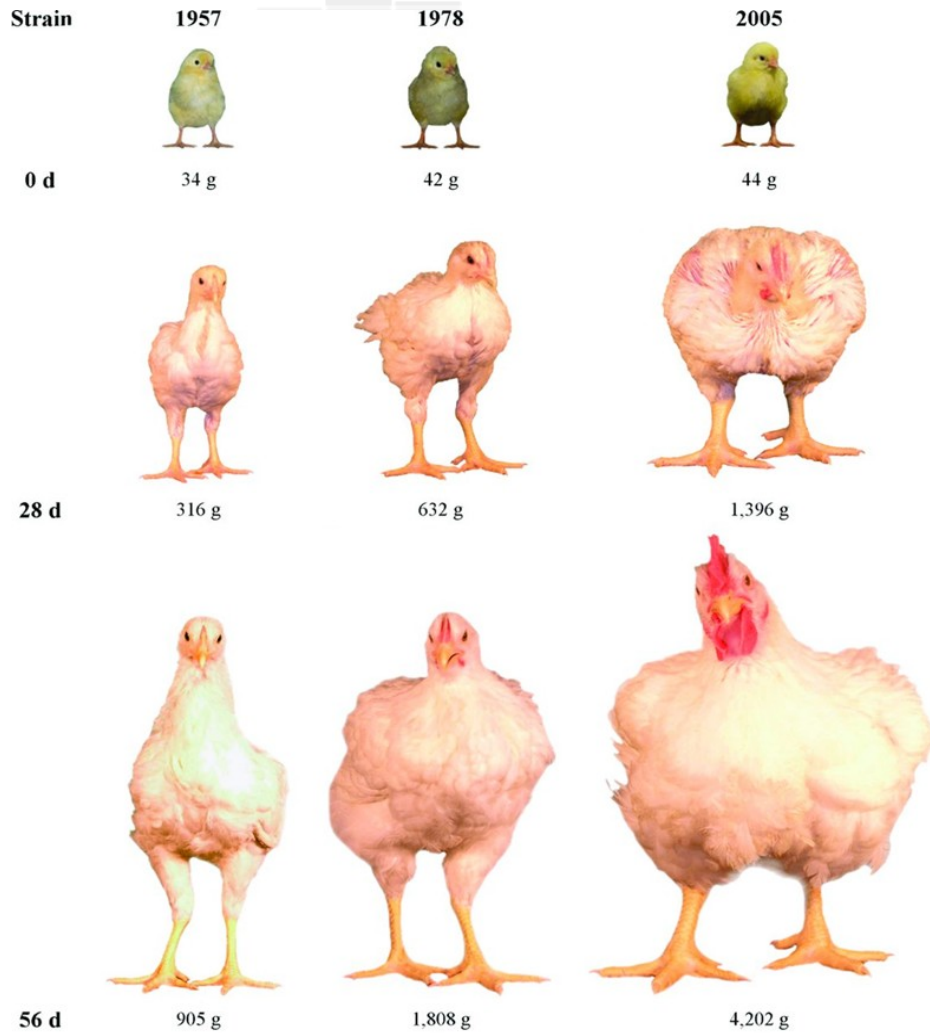
Market share, NCC (2012)



Many quality expectations:

- Meat yields
- Functional properties
- Storage ability
- Sensory perception
- Nutritional value
- Image (animal welfare)

Consequences for broiler production

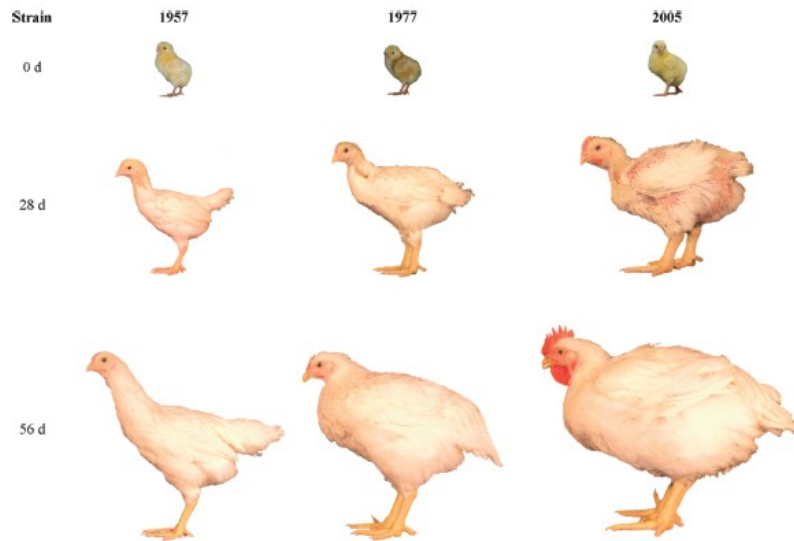


- Feed efficiency ↑
- Growth rate ↑
- Breast meat yield ↑

Source: Zuidhof *et al.*, 2014

Consequences for broiler production

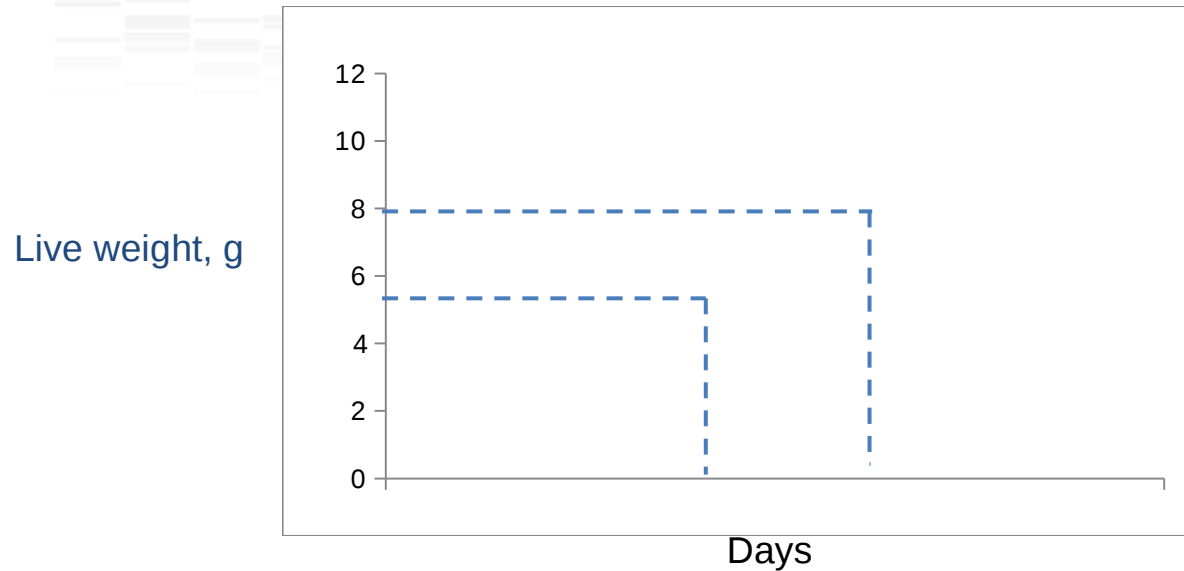
| Year | Strain | Live weight, g | Age, j | Breast, g | Breast, % LW |
|------|----------|----------------|--------|-----------|--------------|
| 1957 | Athens | 2078 | 57 | 280 | 13,5 |
| 2001 | Ross 308 | 2207 | 43 | 349 | 15,8 |
| 2007 | Ross 308 | 2200 | 36 | 410 | 18,6 |
| 2012 | Ross 308 | 2200 | 35 | 464 | 21,1 |



(Petracci et al., 2015)

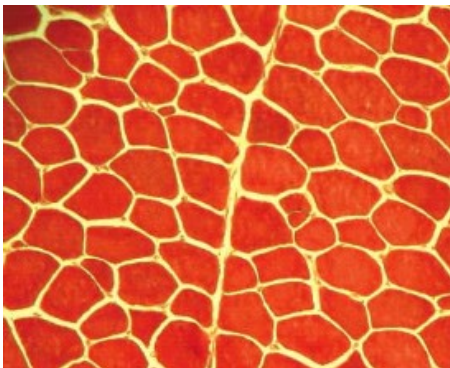
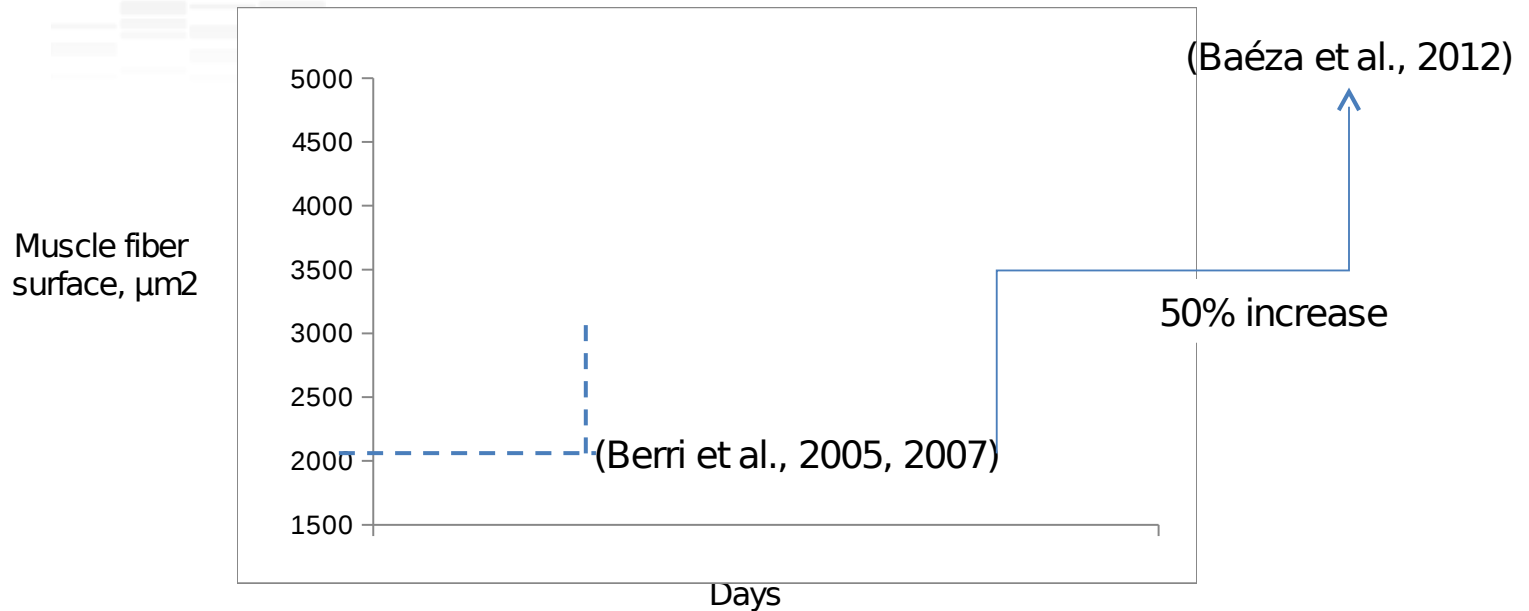
Source: Zuidhof *et al.*, 2014

Consequences for broiler production

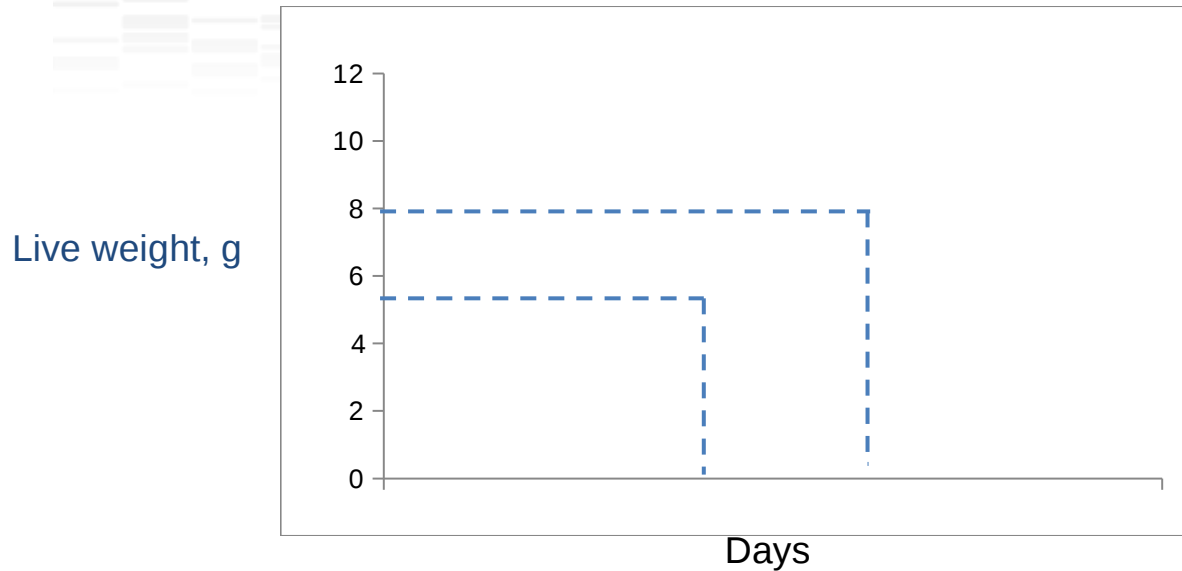


- **Decreasing age at slaughter (< 2.2kg)**
- **Production of heavy and high-yielded broilers (> 3kg)**

Muscle hypertrophy : fiber size increase



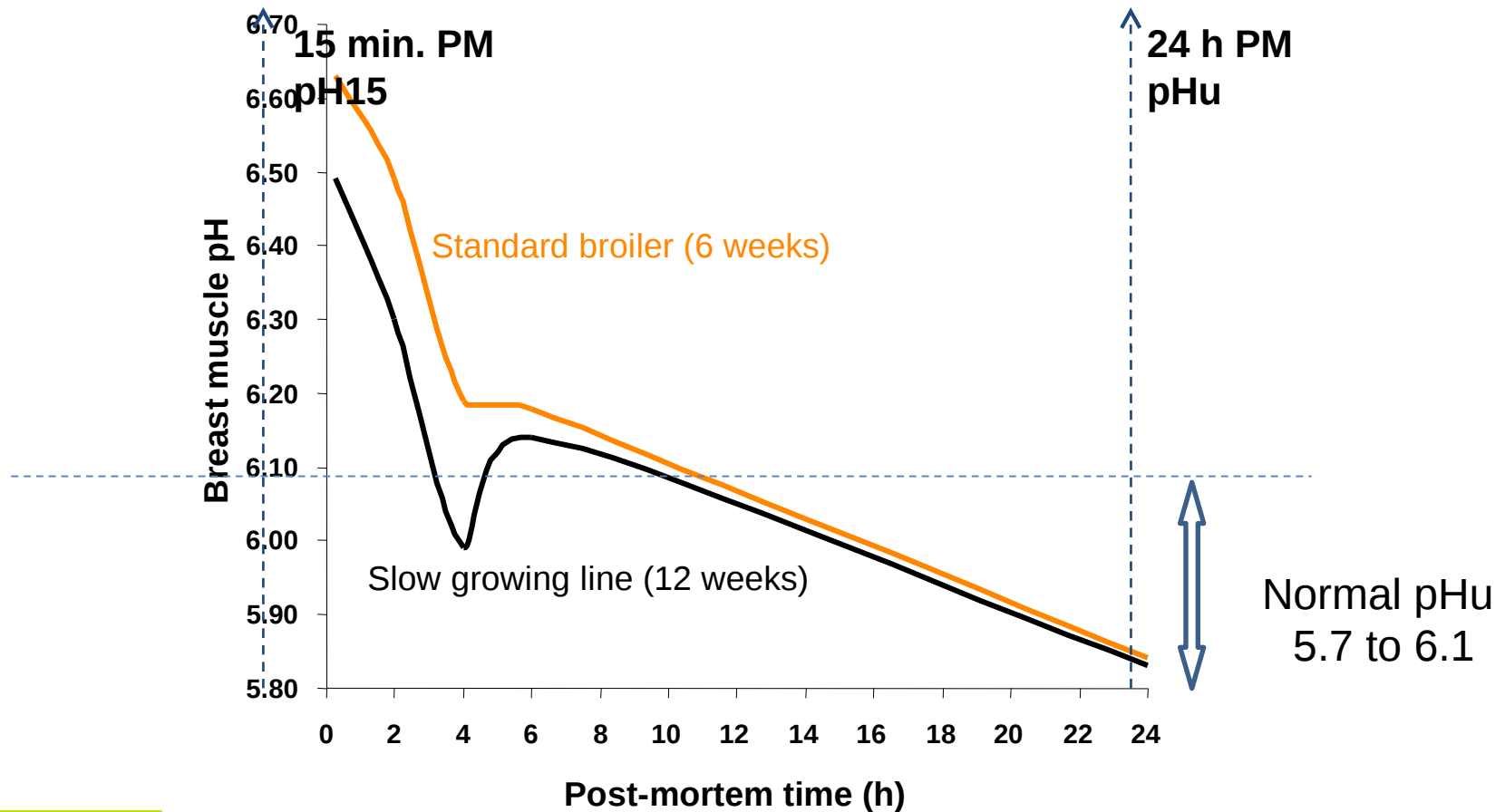
Consequences of older broiler production



Production of heavy and high-yielded broilers (> 3kg)

- Increased muscle fiber size (Baéza et al., 2012)
- Increased lipid and protein content (Baéza et al., 2012; Janisch et al., 2013)
- Modified post-mortem metabolism (Baéza et al., 2012)

The post-mortem pH fall: a key element for meat quality



Postmortem metabolism and meat quality



Initial pH drop



Postmortem pH drop

Muscle glycogen store at death

High

Low

PSE

Acid meat

DFD meat

Low pH 15'

Low pHu (<5,7)

High pHu (>6,1)

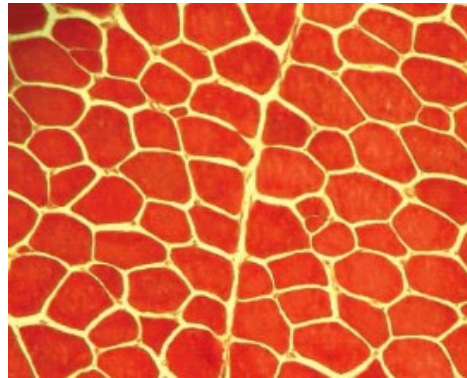
Pale
Exudative
Tough after cooking
Low processing yield

Dark
Firm before cooking (but tender after)
Dry taste
Low shelf-life

Muscle growth and meat quality

Age at slaughter
Selection
Nutrition

Increase in muscle
fiber size



(Berri et al., 2007)

Rg: -0.52



Glycogen

Rg: -0.97

pHu



Lightness

Rg: -0.65



Drip loss

Rg: -0.89



Shear force

Rg: -0.81



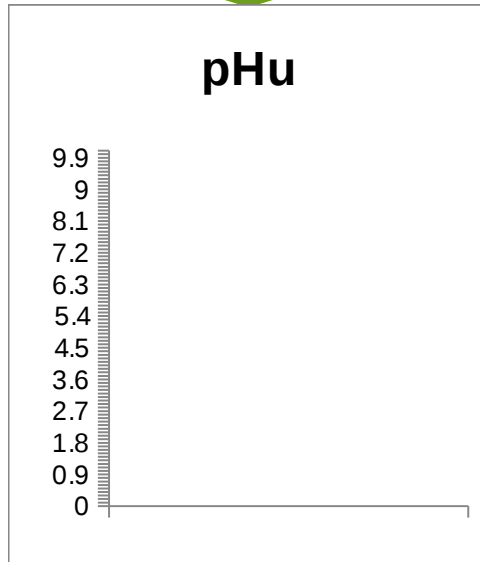
Reduced
occurrence
of acid meat

Improved
color, WHC,
tenderness

Impact of increasing muscle growth on meat pH

(Berri et al., 2001)

Selection

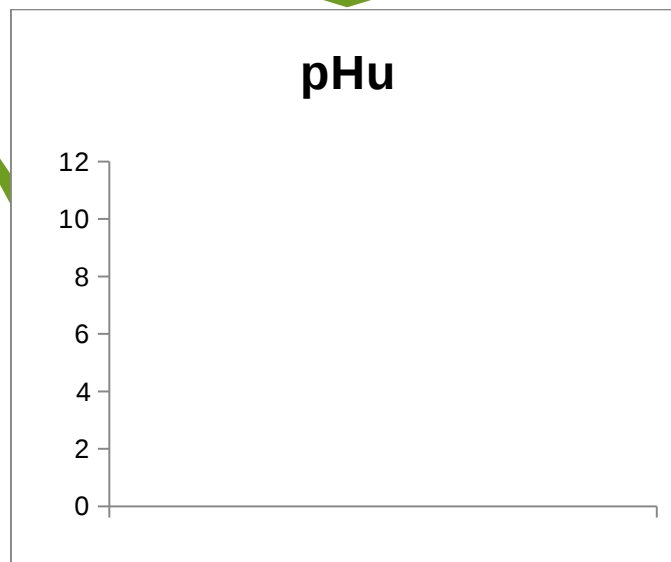


Genotype

BW: 1.3kg → 3.0 kg
BMY: 11.5% → 18.5%

(Baéza et al., 2012)

Age at slaughter

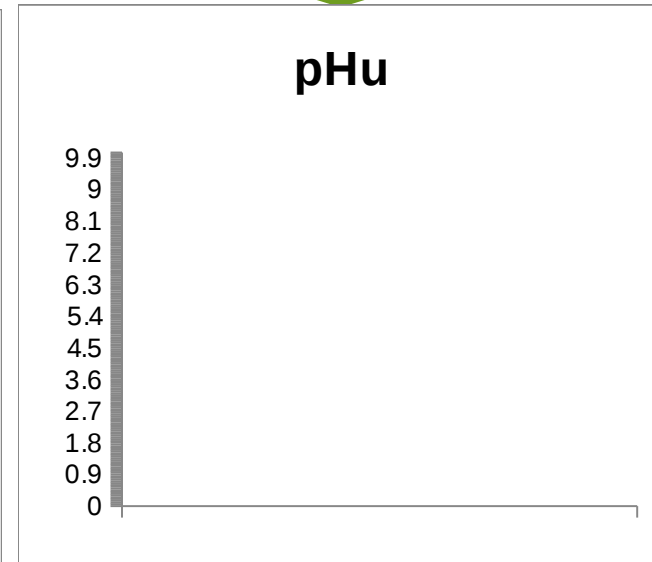


Age at slaughter

BW: 1.9 kg → 4.2 kg
BMY: 18.7% → 22.2%

(Berri et al., 2008)

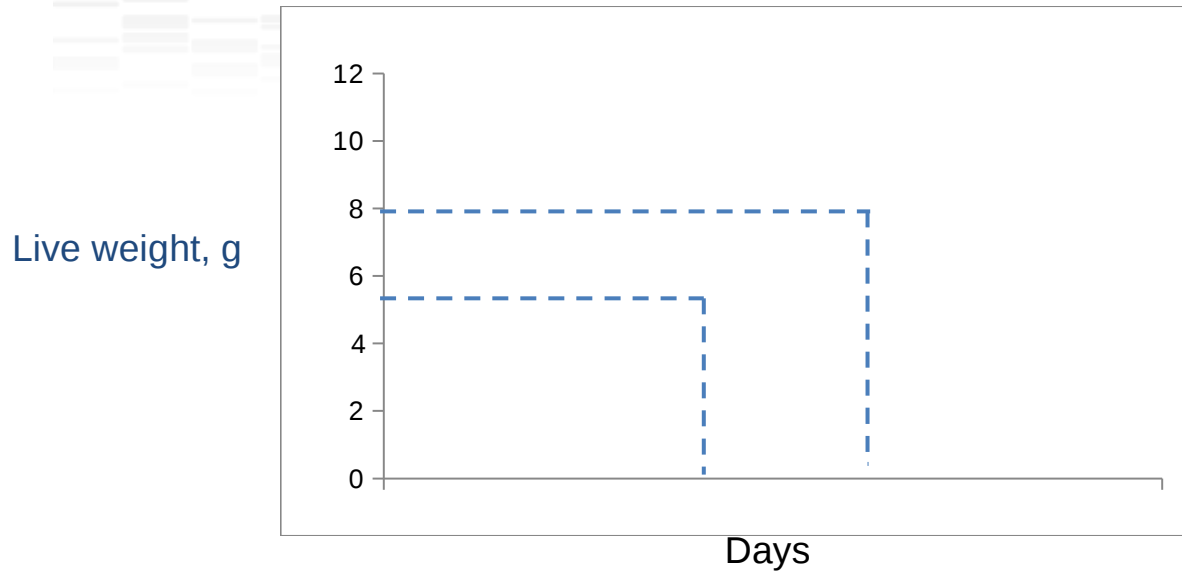
Nutrition



Digestible Lysine

BW: 2.6 kg → 2.7 kg
BMY: 22.0% → 22.9%

Consequences for broiler production

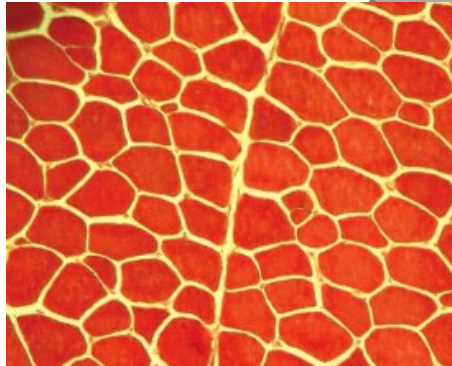


Production of heavy and high-yielded broilers (> 3kg)

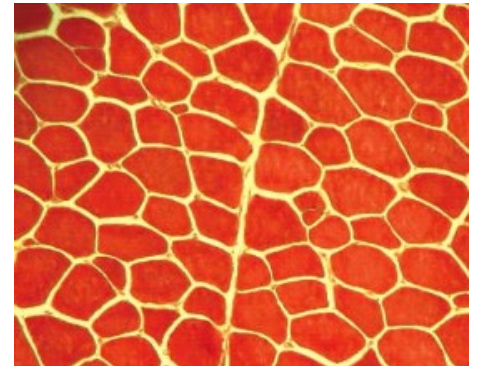
- Increased muscle fiber size (Baéza et al., 2012)
- Increased lipid and protein content (Baéza et al., 2012; Janisch et al., 2013)
- Modified metabolism (Baéza et al., 2012)

Metabolic Changes

(Berri et al., 2001)

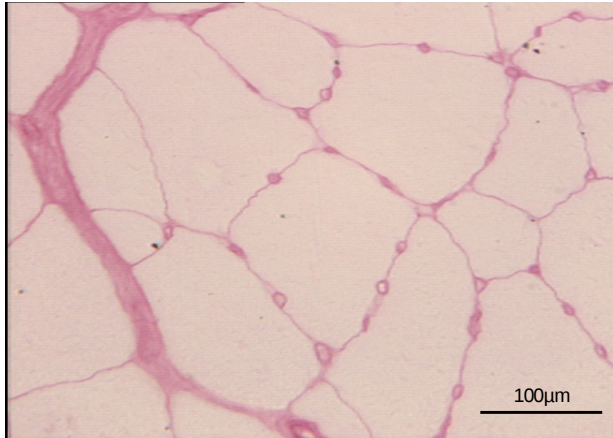


| | | |
|-------------------|--------------|------------------|
| 128 μM | Glycogen | 87 μM |
| 2.4 ppm | Iron content | 1.8 ppm |
| 5.8 mM/g | HAD activity | 4.7 mM/g |

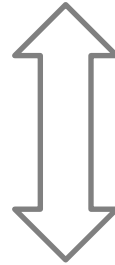


Lower carbohydrate reserve
Lower blood supply
Lower oxidative activity

Muscle blood supply and Metabolism

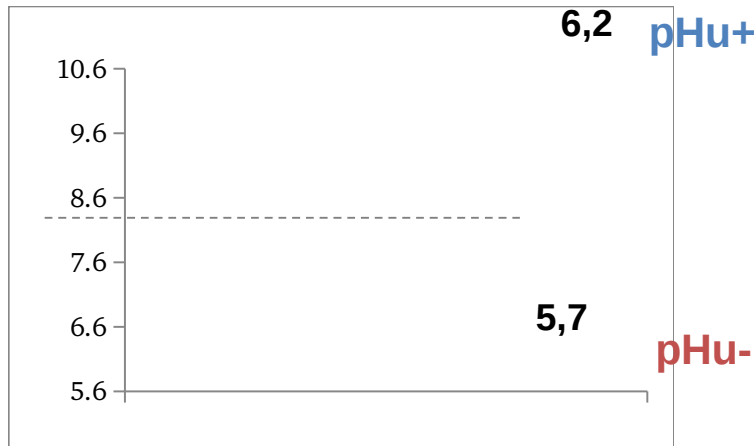
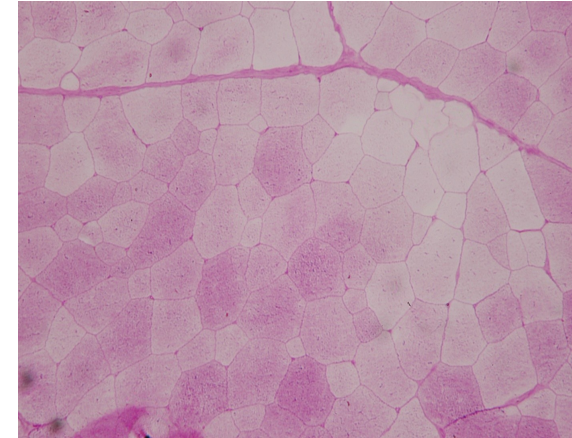


Lower blood supply



(Alnahhas et al., 2015)

Lower glycogen in muscle



20% difference in breast muscle glycogen (P. major)



(Alnahhas et al., 2014,2015)

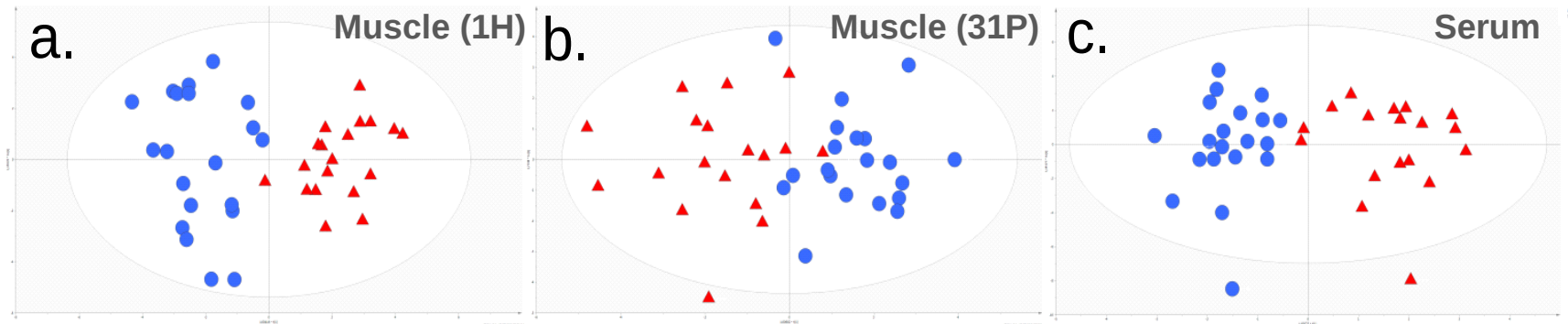
Metabolomic profile (muscle & serum)

(Beauclercq et al., J. Proteome Res. 2016, 15, 1168–1178)

♂ pHu-/pHu+ (n = 40) [6.3 vs 5.5 – glycogen 195 vs 145]



Modeling by oPLS-DA analysis



pHu+ pHu-

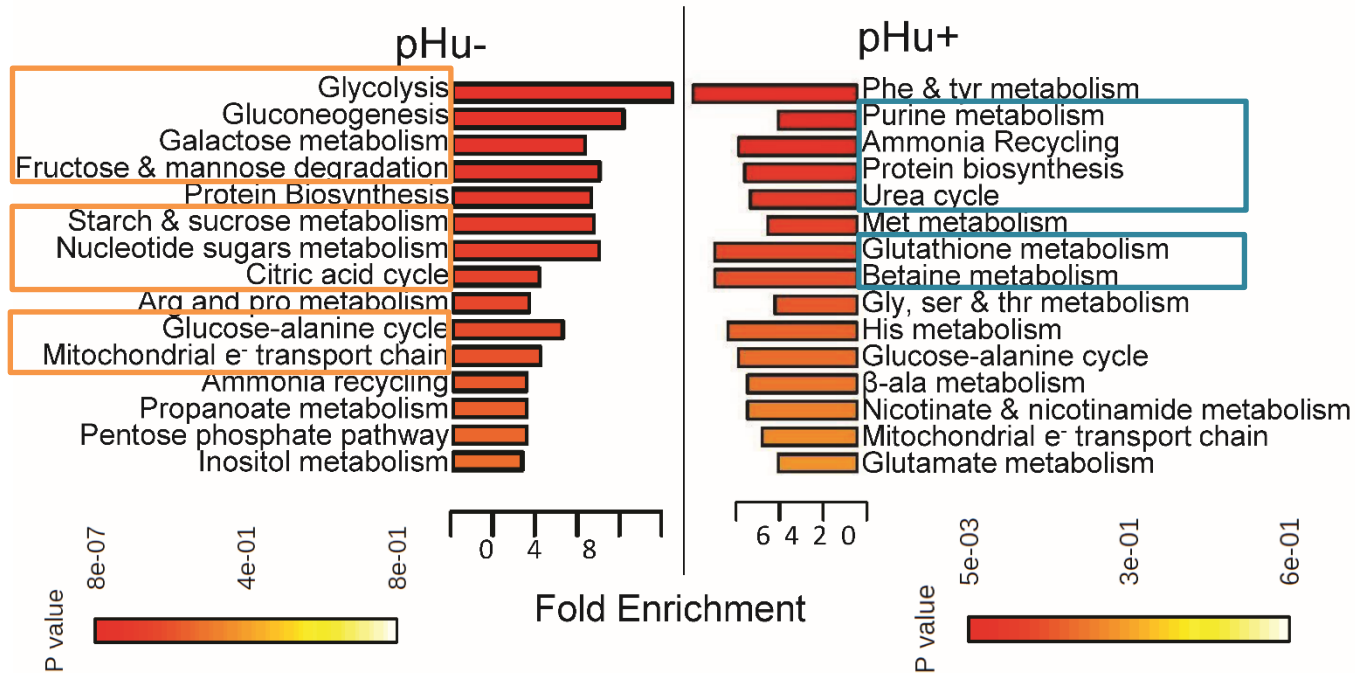


Polar extract of P. major muscle (1H et 31P NMR): 25 discriminant metabolites

Polar extract of serum: (1H NMR): 20 discriminant metabolites

Metabolomic profile (muscle& serum)

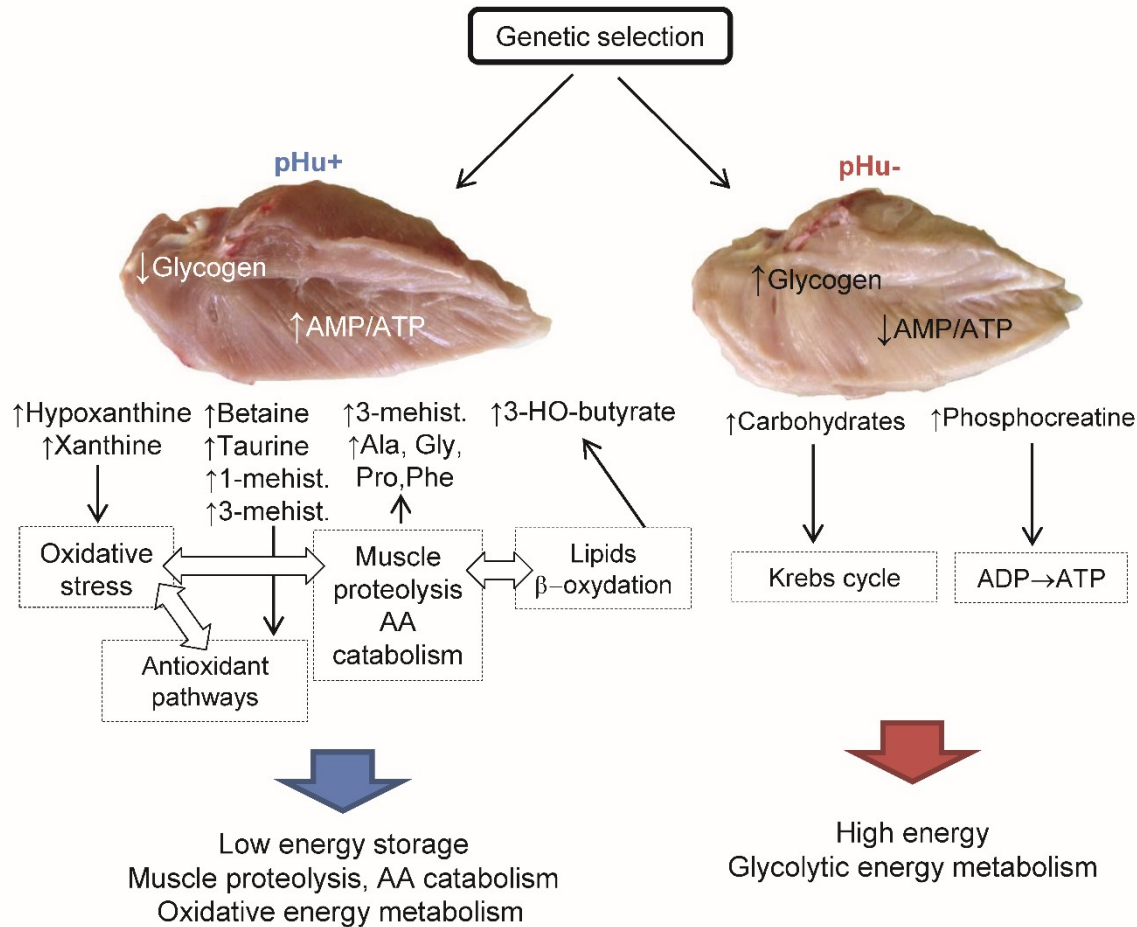
Enrichment analysis on discriminant metabolites



pHu - : Overrepresentation of metabolites related to **carbohydrate turn-over**

pHu +: Overrepresentation of metabolites related to **oxidation and protein catabolism**

Metabolomic profile (muscle & serum)

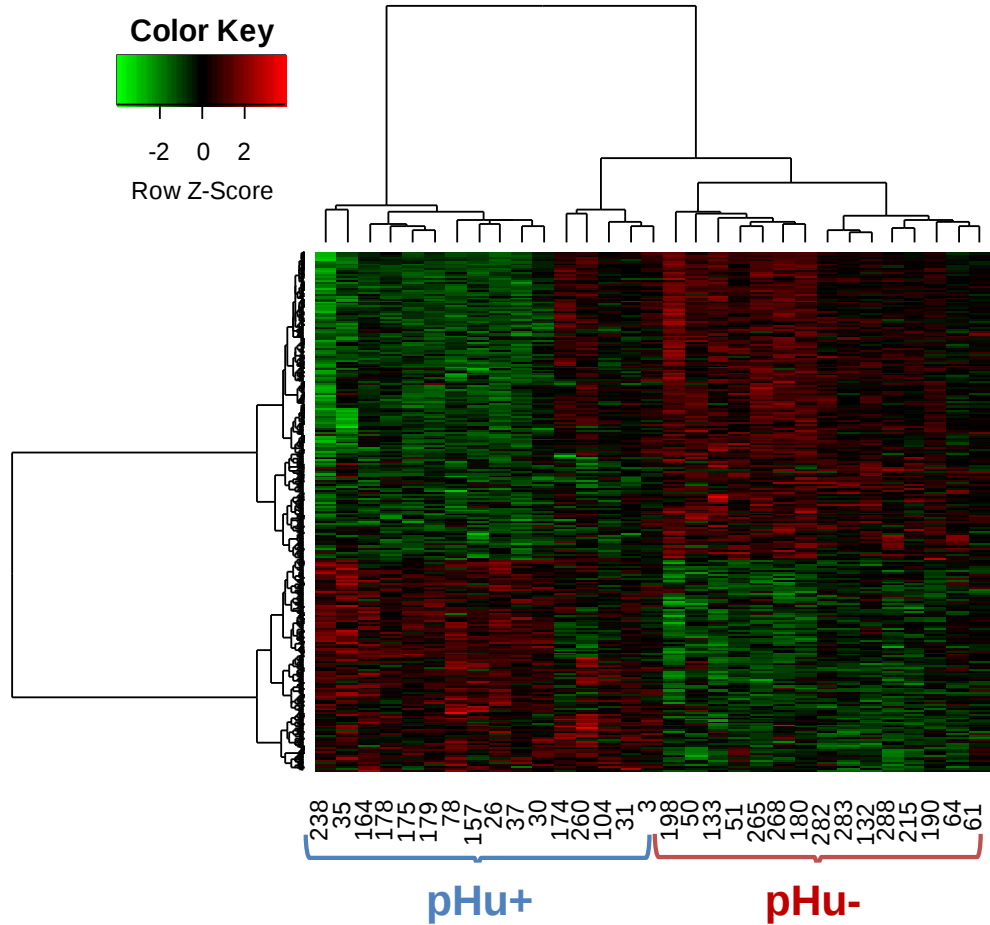


(Beauclercq et al., 2016)

Transcriptomic profile (muscle)

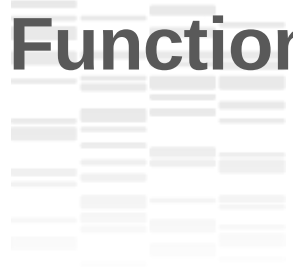
♂ pHu-/pHu+ (n = 31)

Agilent microarray (monocolor 8 × 60K)



Heat map classification

Functional Analysis of muscle transcriptome



Ingenuity Pathway Analysis

pHu-

Glycolysis/neoglucogenesis

ATP Concentration

Amino-Acid Métabolism

Muscle cell organisation

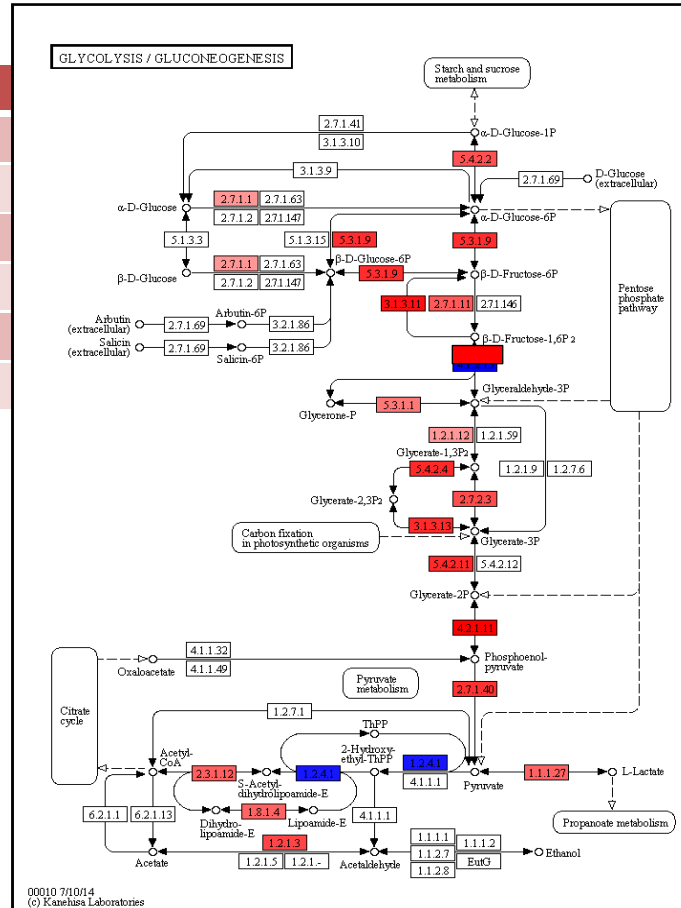
Purine metabolism

Triglyceride Synthesis



High energetic status
High glycolytic activity

Beauclercq et al, Submitted 2017

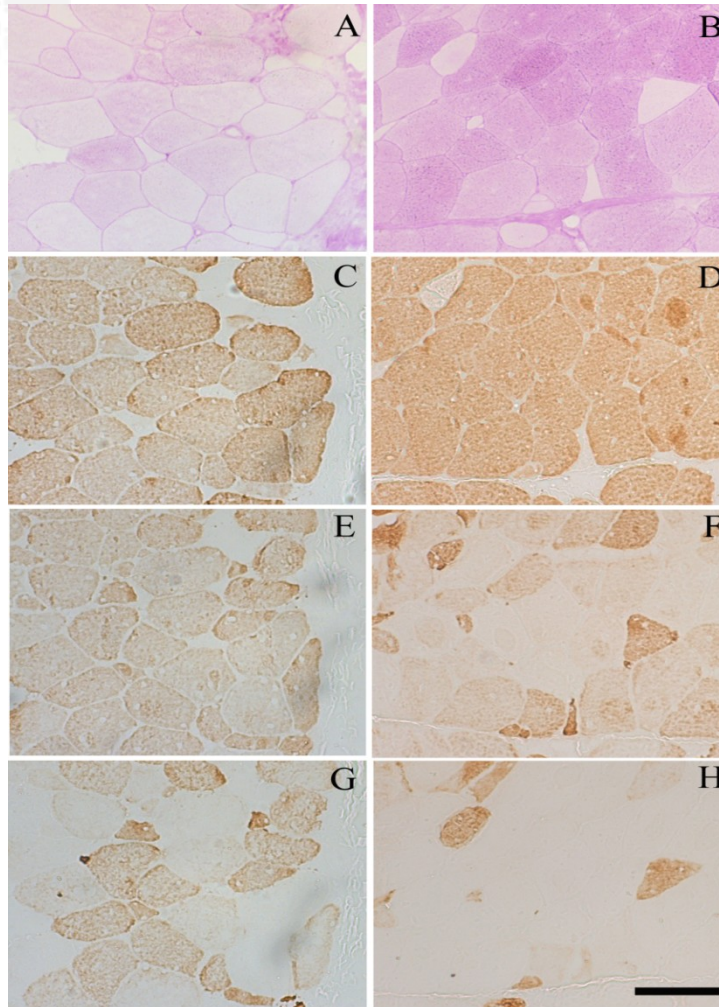


Histological profile

pHu+

pHu-

Glycogen



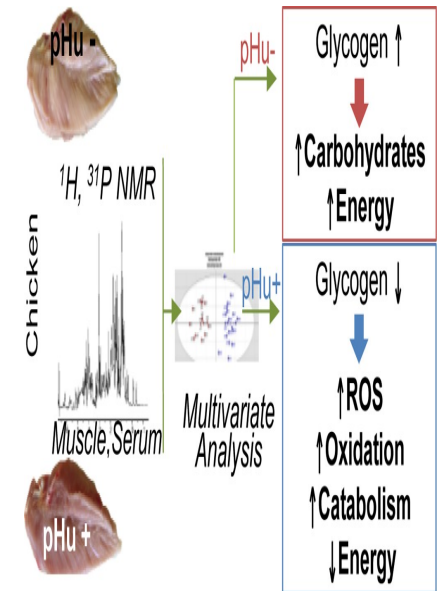
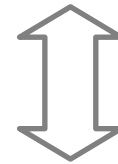
Adult fast-myosin

Embryonic and neonatal fast-myosin

Neonatal fast-myosin

100 μm

pHu+: Higher ratio of cells expressing embryonic and neonatal developmental fast-myosins, which could be the sign of higher regeneration process



Summary : consequences of increased pHu

- Low blood supply → low cell oxygenation, low nutrient supply
- Intensive use of in situ glycogen
- Elevated protein and muscle degradation
- Increased oxidative stress and production of reactive oxidative species (ROS) → altered redox homeostasis

- Muscle dysfunction? Fiber alterations? Link with emergent defects?

What is the link between metabolic and structural meat-defects ?



White striping



Wooden breast



Spongy muscle

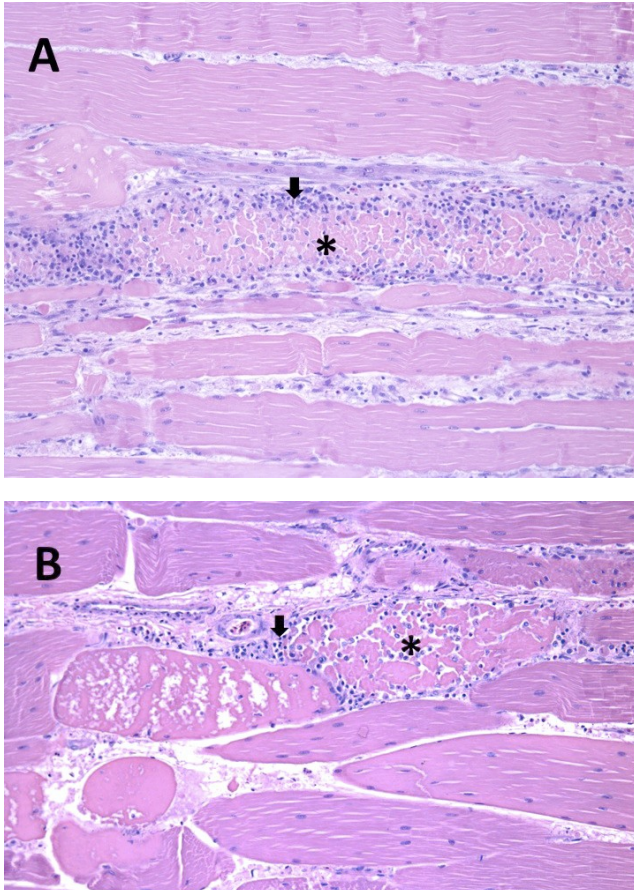
White striping



(from: Kuttappan *et al.*, 2012)

White striping

Longitudinal cross-sections

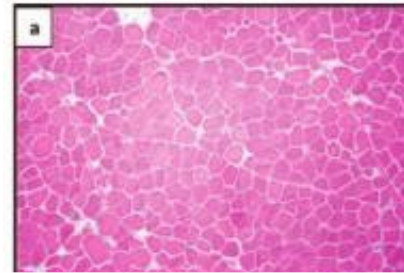


* = muscle fiber necrosis

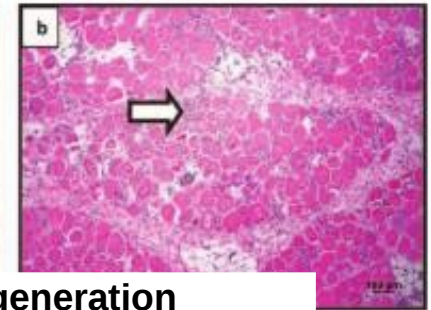
↑ = neutrophil and macrophage infiltration

Transversal cross-section

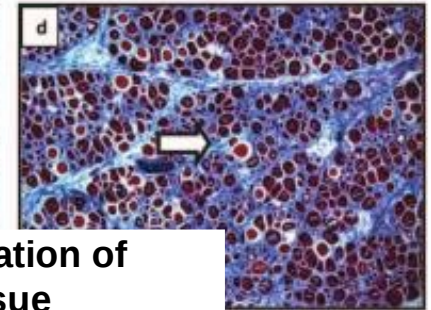
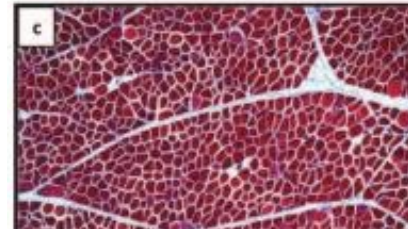
NORMAL



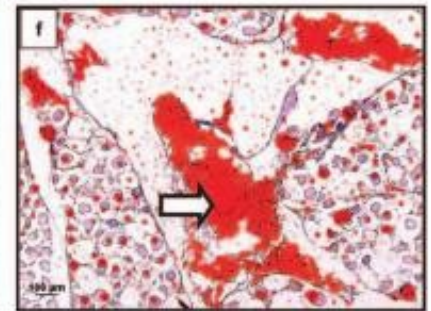
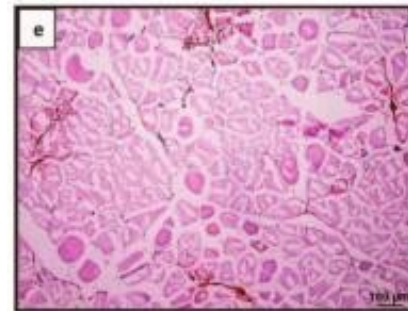
WHITE STRIPING



Muscle fiber degeneration



Fibrosis: accumulation of connective tissue

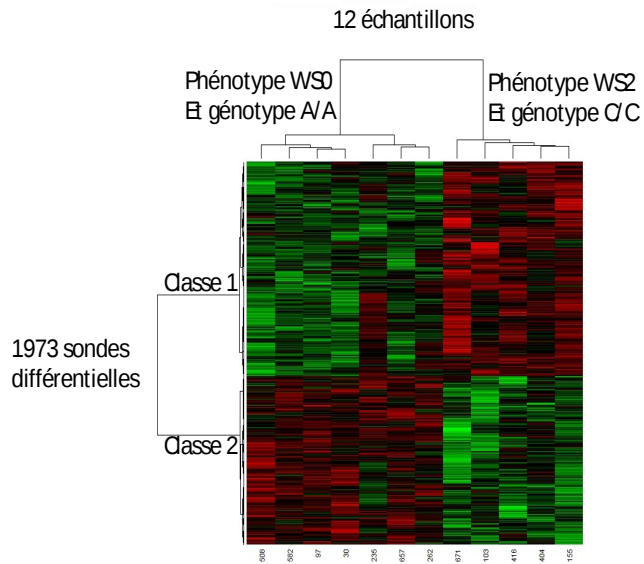


Lipidose: accumulation of lipids

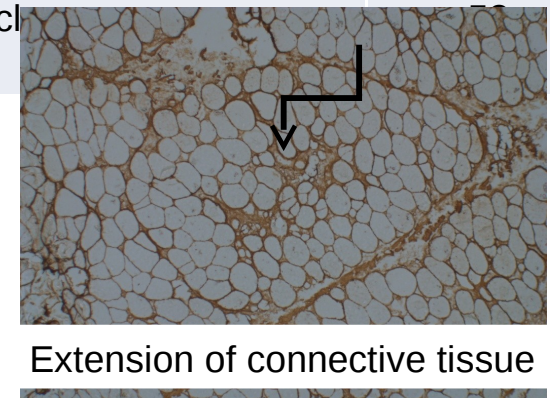
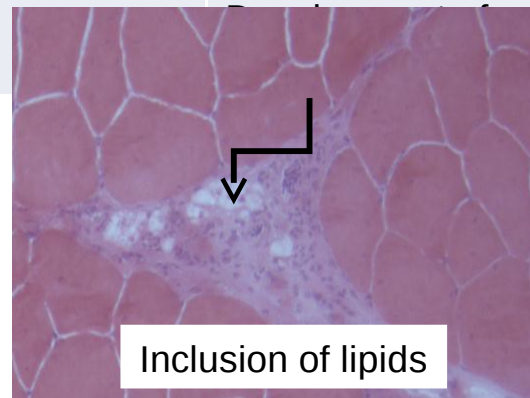
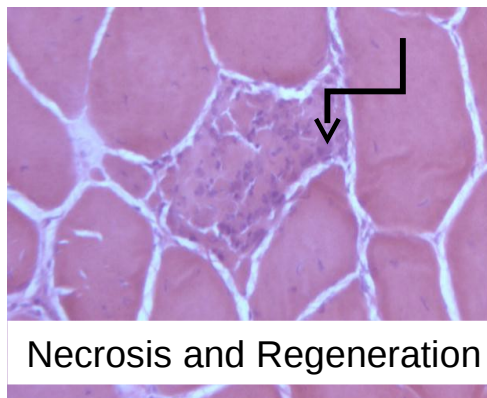
White striping

(unpublished results)

- Global gene expression analysis (microarrays) → functional analysis



| | Fonctions identifiées par IPA® | Differential genes |
|-----------|--|--------------------|
| Pathways | Wnt/Ca ⁺ : regulation of cellular Ca ⁺⁺ , involved in embryonic tissue development | 43 |
| | HGF (hepatocyte Growth Factor) : activation of satellite cells during muscle regeneration | 85 |
| Disorders | Pathology of connective tissue: hyperplasia of connective tissue and lipodystrophy | 28 |



Wooden Breast

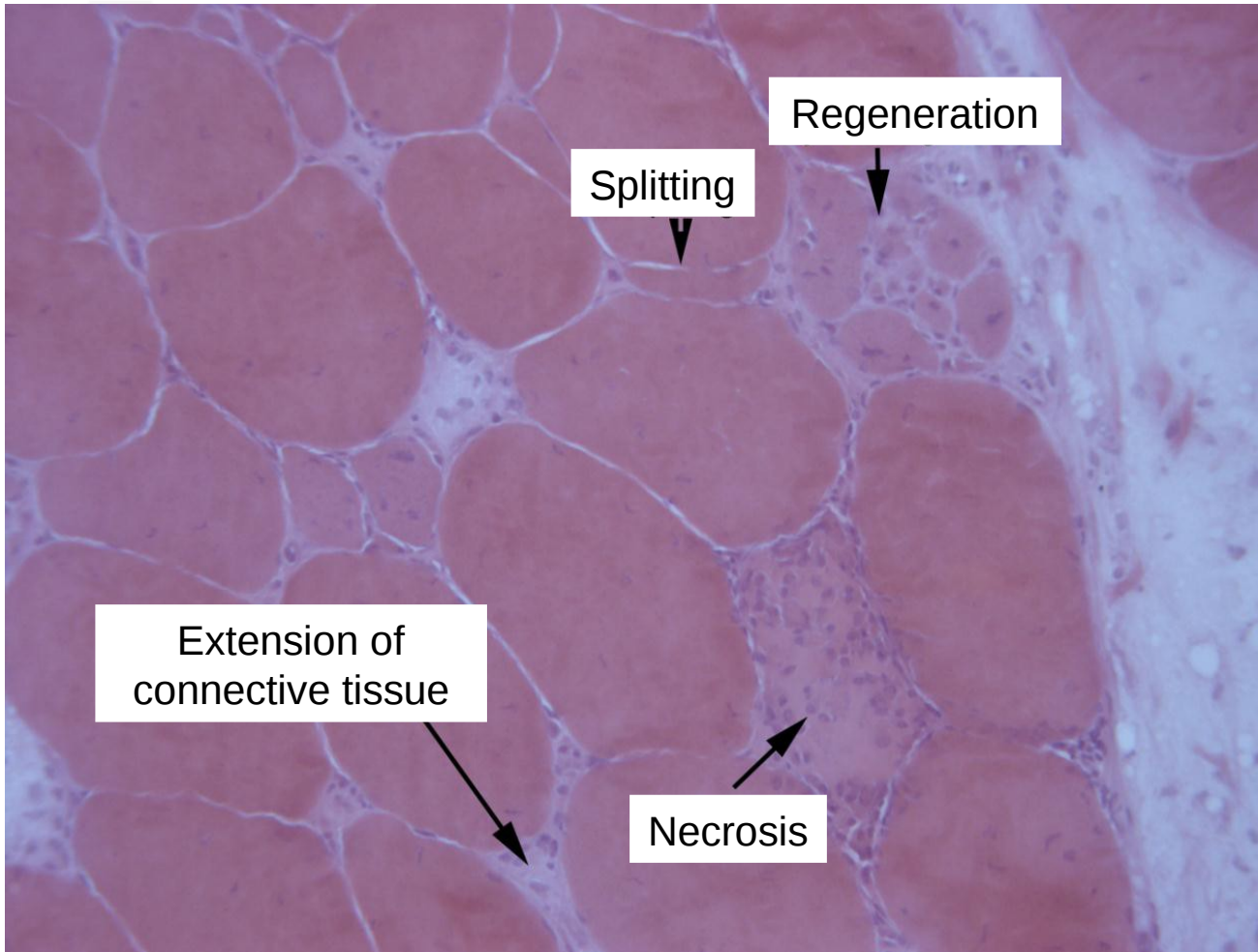


Decreased blood supply?

Decreased glycogen store?

| | Shear force | Ultimate pH | Lightness | redness |
|---------------|--------------|-------------|-----------|--------------|
| Normal | 8.39 | 5.88 | 48.74 | 0.19 |
| Wooden breast | 16.24 | 6.09 | 50.18 | -1.46 |

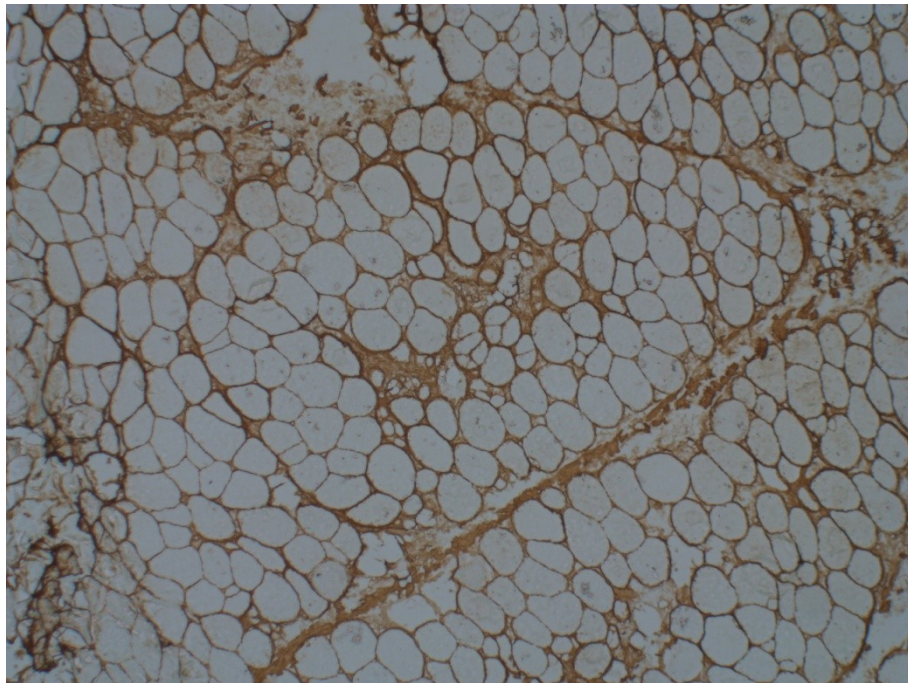
Wooden breast



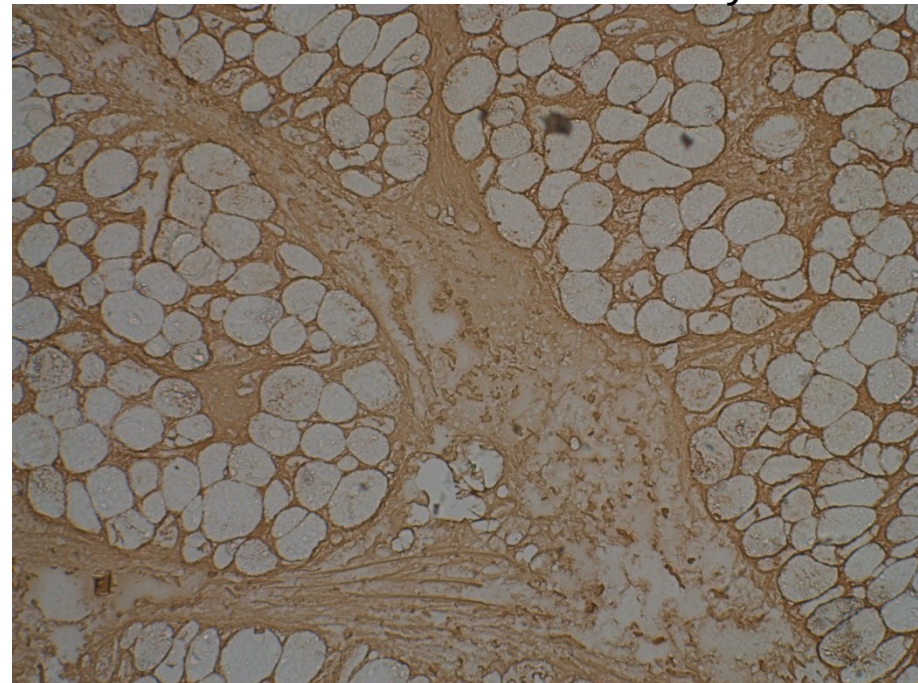
Wooden breast

- Very extended fibrosis (collagen III immunolabelling)

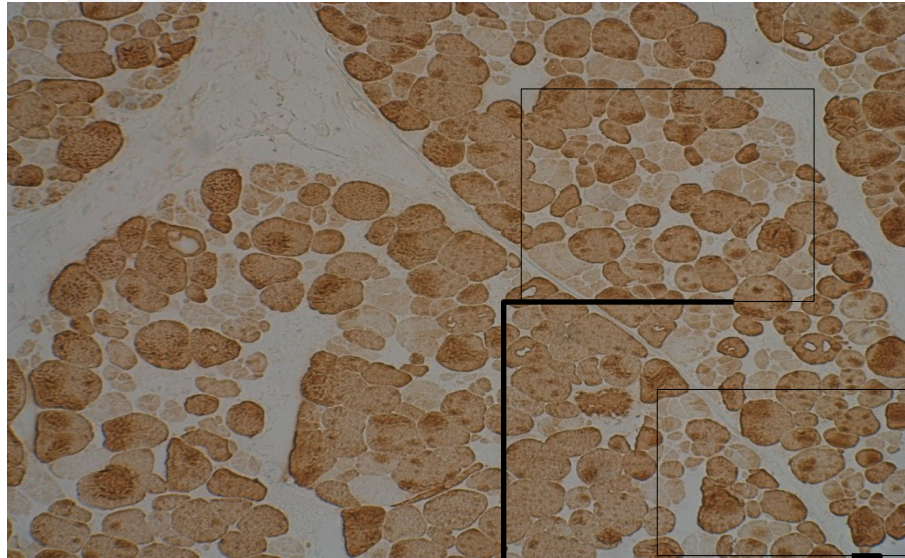
Normal muscle



Woody muscle

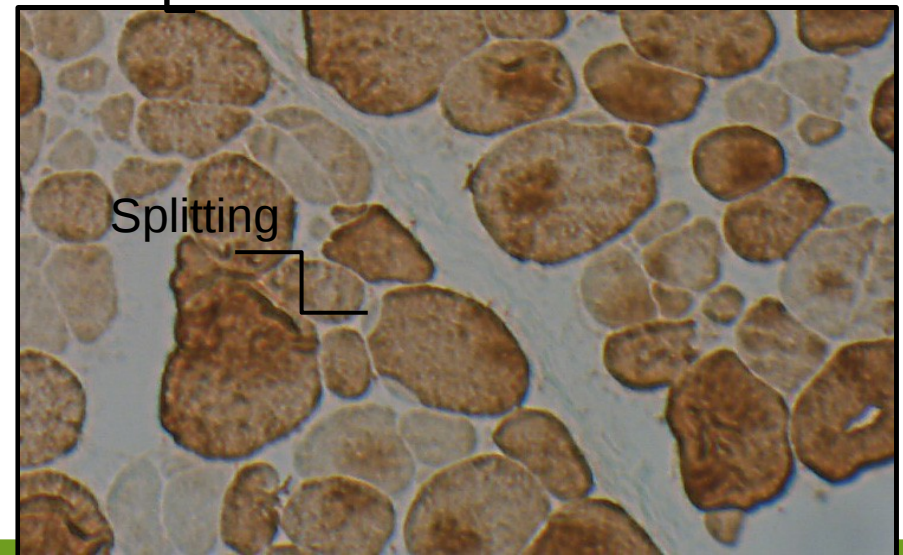
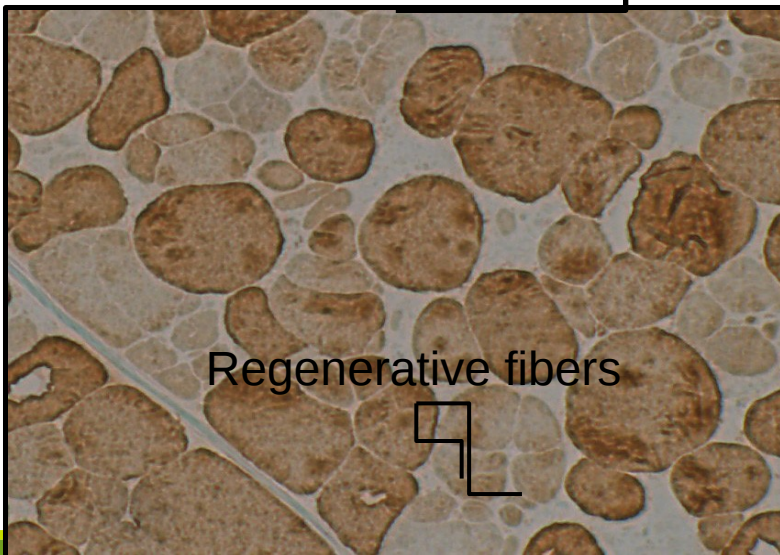


Wooden breast



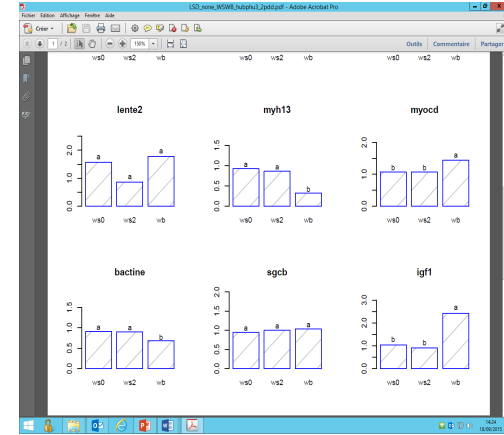
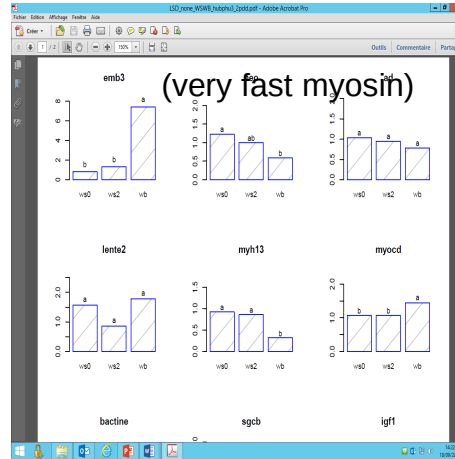
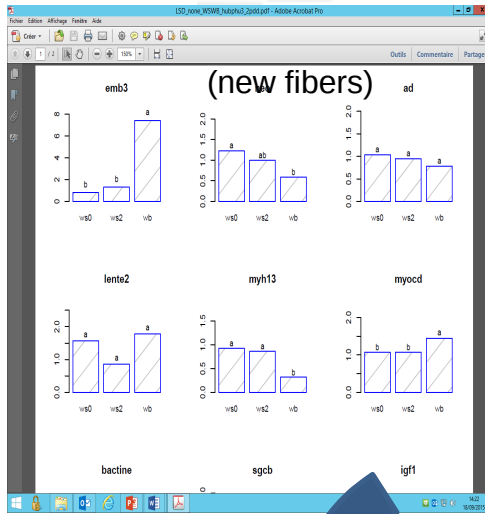
- Muscle fibers variable in size
- Regenerative fibers
- Splitting

(Adult Myosin Heavy Chain labelling)

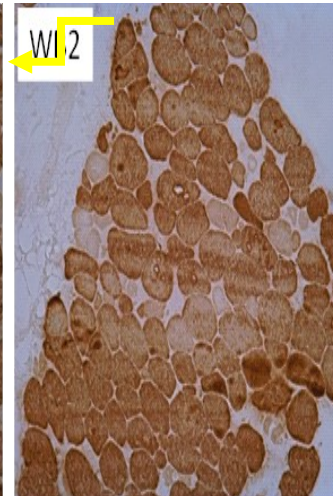
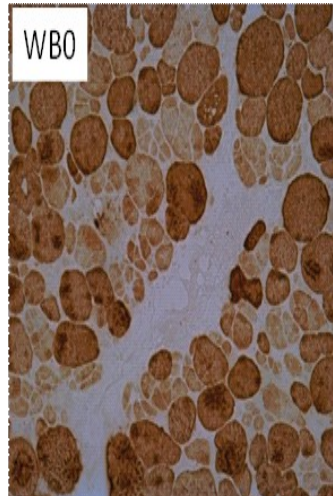


Wooden breast

- Change in muscle typing
- Muscle growth factor



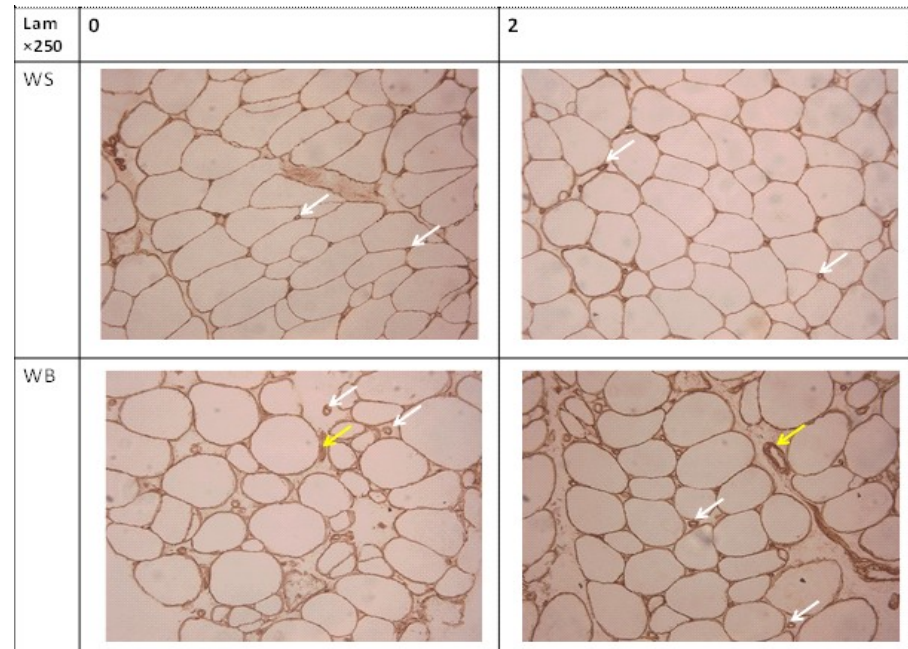
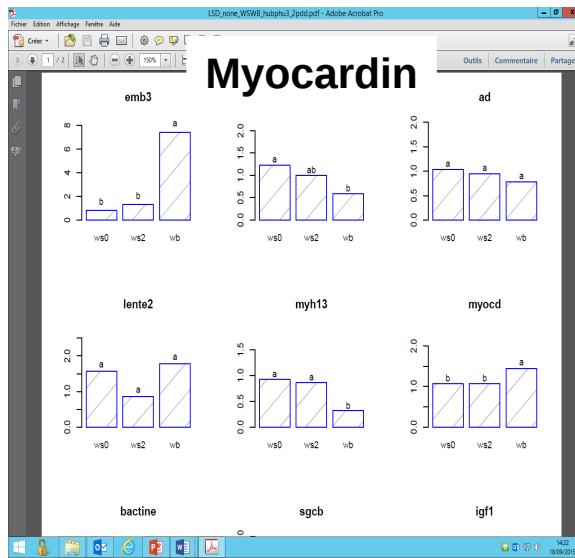
↑ Marker of early stages of development



↑ proliferation and differentiation of muscle fibers

Wooden breast

- Smooth muscle formation
- Angiogenesis

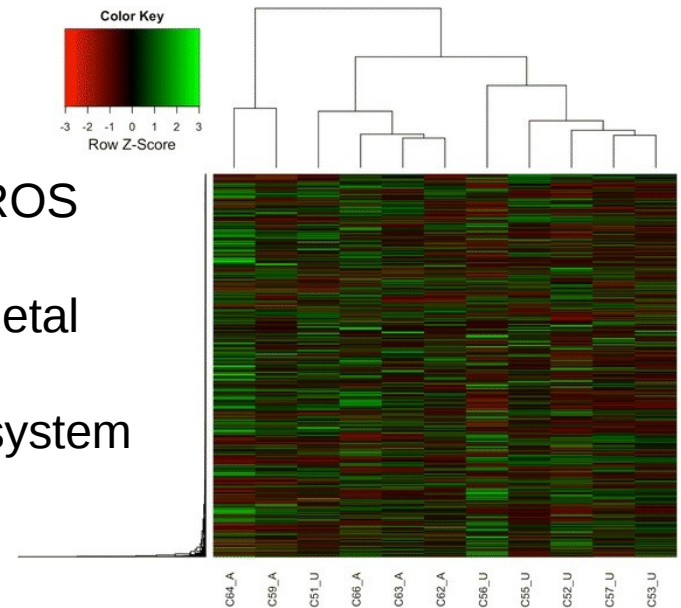


- Capillaries disconnection: poorer oxygenation, and lower nutrient intake of fiber

Wooden breast

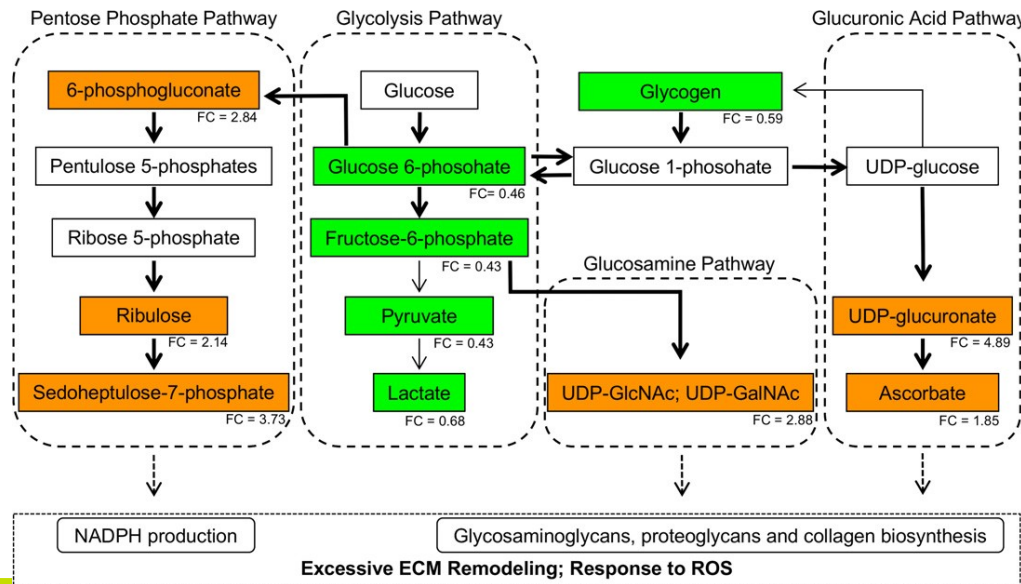
(Mutryn et al., 2015)

- Global gene expression analysis by RNA-sequencing:
 - Abnormal accumulation of intracellular calcium
 - Hypoxia
 - Increased oxidative stress and accumulation of ROS
 - Fiber-type switching (fast to slow)
 - Increased cellular repair and regeneration in skeletal muscle
 - Downregulation of genes related to coagulation system



Wooden breast

- Metabolite profiling (GC/MS; LC-MS/MS) (Abasht et al., 2016)
 - Much lower glycogen content (1.7-fold)
 - Increased oxidative stress,
 - Elevated protein levels,
 - Muscle degradation,
 - Altered glucose utilization.
 - Altered redox homeostasis (↑ hypoxanthine, xanthine)



WB



Common regulations between WB and pHu+ muscles



pHu+

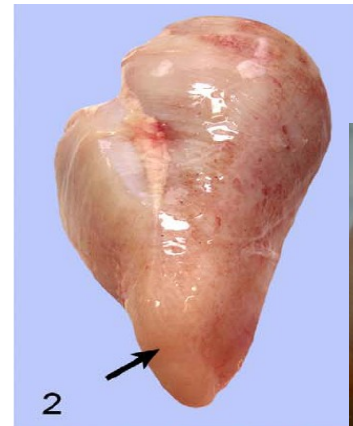
Major meat quality defects

pH-related defects



Muscle 'dystrophic' syndromes

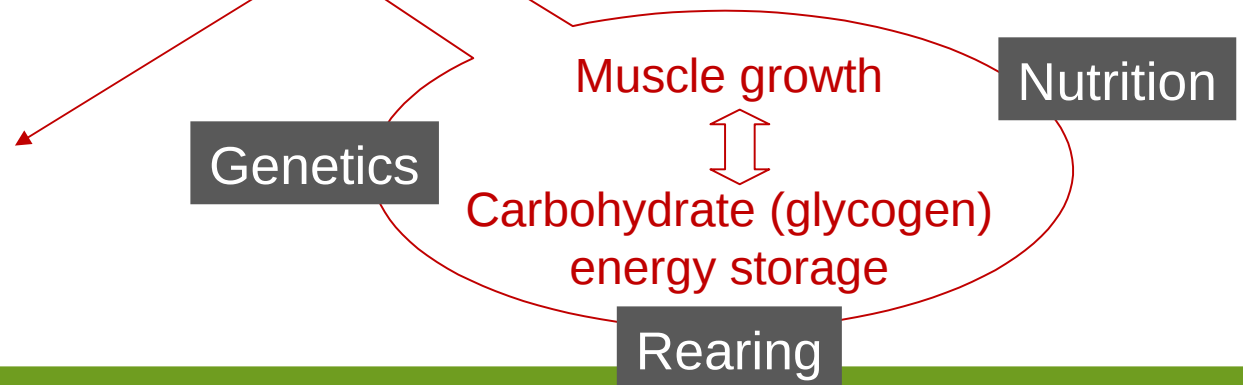
Wooden breast



White stripping



Oxidative damages

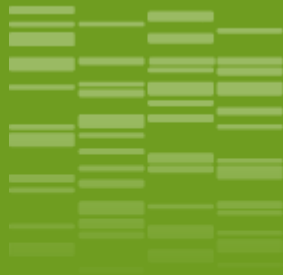


Conclusions

- Genomics and metabolomics are very helpful to **unravel meat quality determinism** and identify **pertinent biomarkers for diagnosis purpose**
- It highlights some **common regulatory pathways** underlying meat defects related to muscle growth and glycogen depletion...
 - Poor muscle fiber vascularity → poor oxygenation of the muscle, anaerobic glycolysis, oxidative stress
 - Production of ROS (↓ redox homeostasis)
 - Increased protein and amino acid catabolism
 - Change in muscle fiber typing
 - Increased regeneration process
- But also **specific processes** related to wooden breast and white striping
 - Muscle fiber necrosis
 - Cell repair processes (fibrosis, Lipidosis)
➡ **Pseudo-hypertrophy of muscle (dystrophic condition)**

Perspectives

- **Developing non invasive methods to identify breeders prone to develop meat defects:**
 - Genetic markers useful for selection (genomics)
 - Biomarkers such as blood metabolite, enzyme activity, or gene expression
- **Ensuring an optimal and harmonious development of broilers with positive impact on animal robustness and meat quality:**
 - Livestock management, especially during early life
 - Preserve glycogen store in muscle,
 - Delay the differentiation processes to produce more fibers of smaller size
 - Increase the pool of available satellite cells to insure proper cell growth and renewal (limit fibrosis and lipidosis)
- **Considering the use of more robust strains with more harmonious body development:**
 - Gains expected in term of mortality, meat waste at the slaughter plant, increased processing yield



Thanks for your attention

Special thanks to

- S. BEAUCLERCQ, PhD student
- E. LE BIHAN-DUVAL, senior scientist (genetics)
- Many others at
 - URA – INRA Nouzilly
 - PEAT – INRA Nouzilly

