



HAL
open science

Response of a cold water species – the Arctic charr (*Salvelinus alpinus*) – to climate warming

Emilien Lasne, Lisandrina Mari, Laura Garaud, Yann Voituron, Martin
Daufresne, Guillaume Evanno, Jean Guillard

► To cite this version:

Emilien Lasne, Lisandrina Mari, Laura Garaud, Yann Voituron, Martin Daufresne, et al.. Response of a cold water species – the Arctic charr (*Salvelinus alpinus*) – to climate warming. Séminaire ACCAF "Recherche et Adaptation au Changement Climatique", Mar 2016, NA, France. hal-01595430

HAL Id: hal-01595430

<https://hal.science/hal-01595430>

Submitted on 5 Jun 2020

HAL is a multi-disciplinary open access archive for the deposit and dissemination of scientific research documents, whether they are published or not. The documents may come from teaching and research institutions in France or abroad, or from public or private research centers.

L'archive ouverte pluridisciplinaire **HAL**, est destinée au dépôt et à la diffusion de documents scientifiques de niveau recherche, publiés ou non, émanant des établissements d'enseignement et de recherche français ou étrangers, des laboratoires publics ou privés.

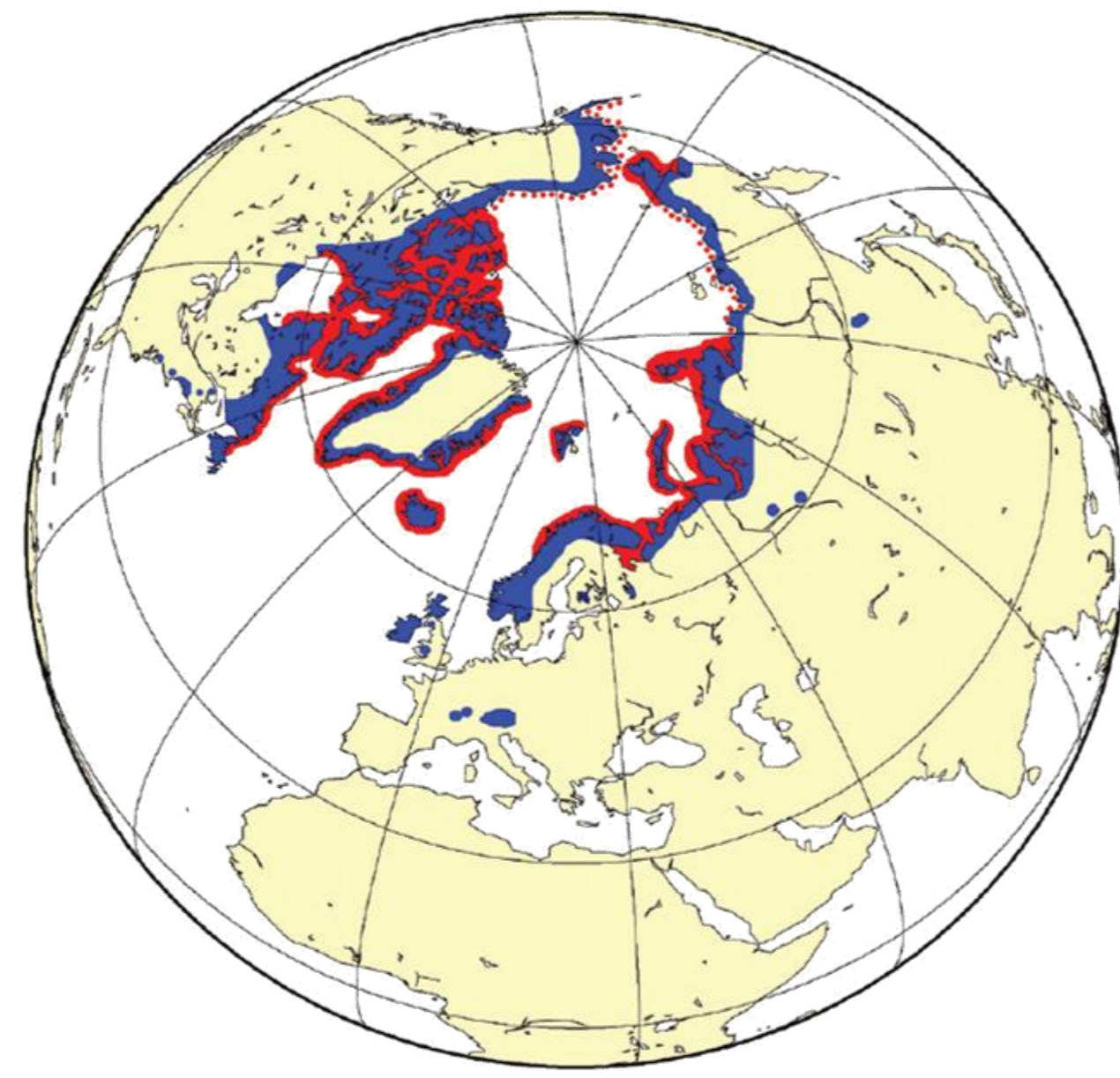
Response of a cold water species – the Arctic charr (*Salvelinus alpinus*) – to climate warming

Emilien LASNE¹, Lisandrina MARI¹, Laura GARAUD¹, Yann VOITURON², Martin DAUFRESNE³, Guillaume EVANNO⁴, Jean GUILLARD¹
1- UMR CARTEL INRA-USMB, Thonon-les-Bains / 2-UMR LEHNA UCBL-CNRS, Lyon / 3-UR RECOVER –IRSTEA, Aix en P. / 4- UMR ESE, INRA-Agrocampus, Rennes

Biological model: the Arctic charr

The most cold-adapted freshwater fish:

- wide circumpolar distribution
- strong **stenothermic requirements**
- alpine pop. at the **southern edge**
- alpine lakes highly concerned by warming

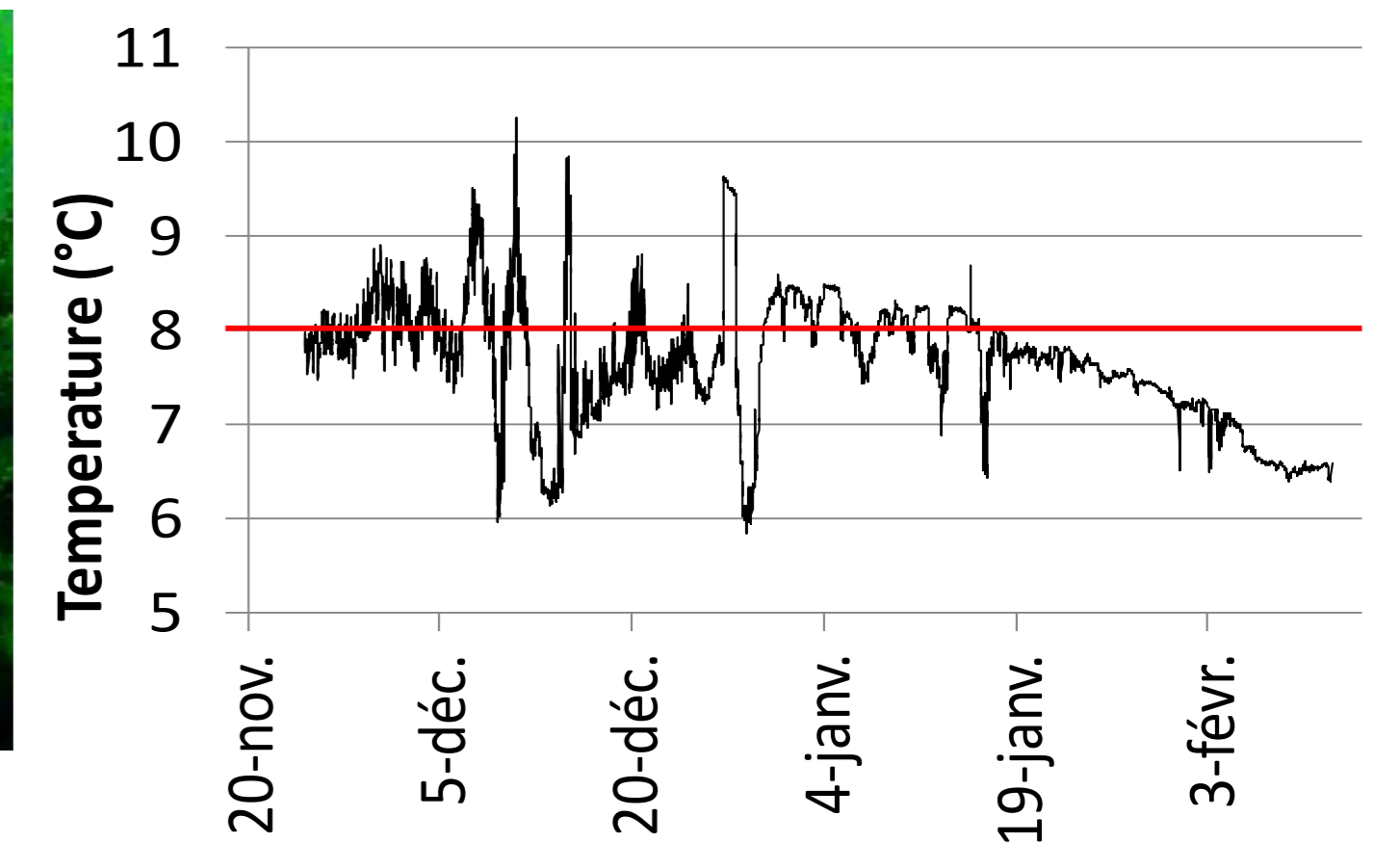


Resident pop. ■ Anadromous pop. ■
Svenning & Klemetsen, 2001

→ Arctic charr is assumed to be **vulnerable to increasing T°**

Problematic: impact of T° on early stages

- Literature indicates that **incubation is imperiled if T° > 8°C**
- In southern populations, **temperature on spawning ground sometimes exceeds 8°C** (here, in Lake Geneva, 40 m depth in 2014-2015):



- **Effect of T° and the adaptive potential of pop.**
- **Direct vs indirect effects? Interact° with other stressors?**

Experiment 1: local adaptation and adaptive potential facing increasing T°

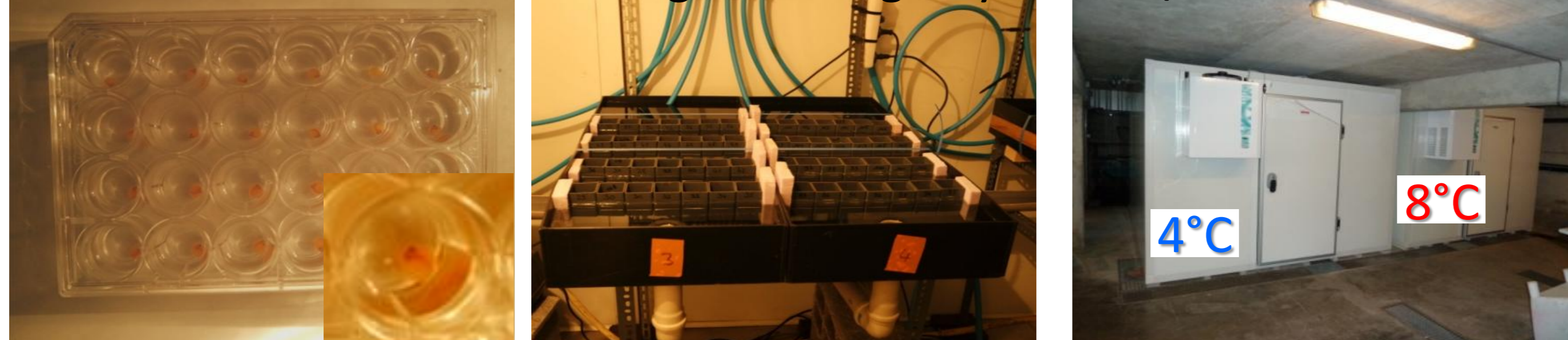
Hyp: T° contrasted habitats could lead to contrasted responses to T° (local adaptation)

- Common garden with several pops from T° contrasted lakes
- Factorial crossings within populations (separate genetic and environmental components of phenotypic variance/quantitative genetics)

Spawners sampling Ova and milt extraction Artificial crossings



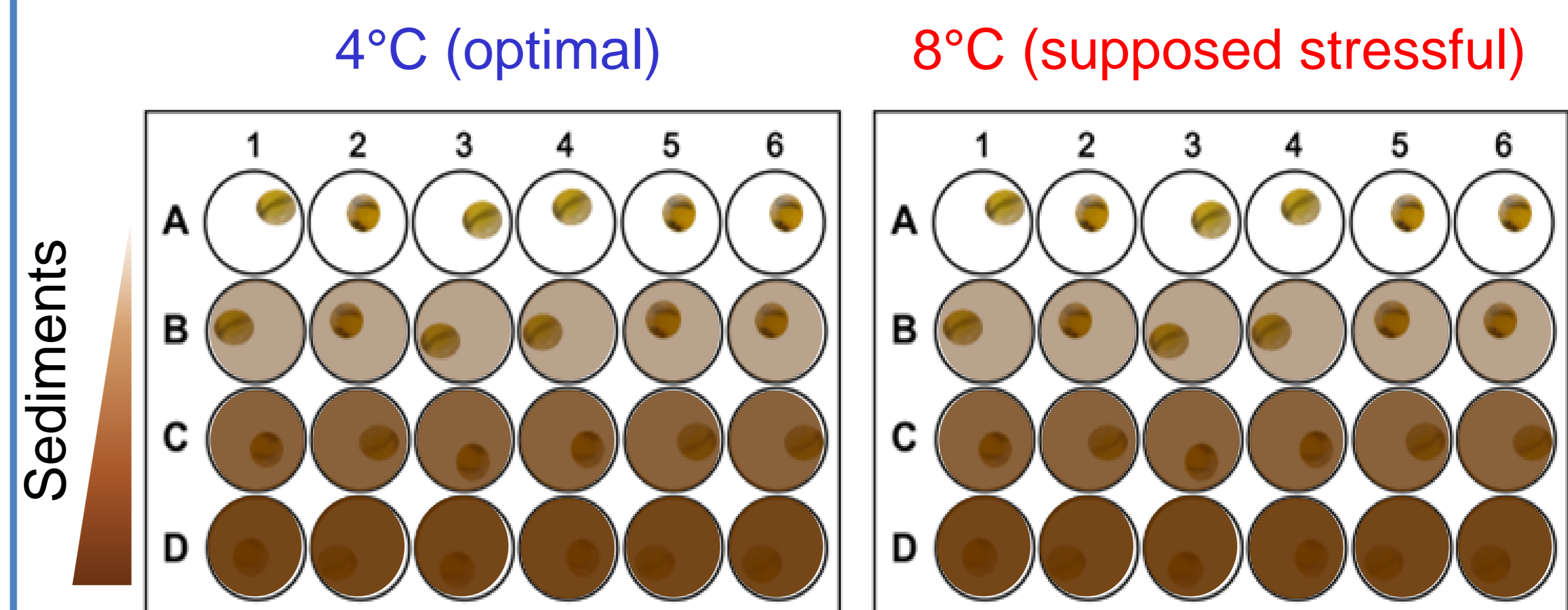
Individual incubation Rearing of siblings fry Temp. treatments



Experiment 2: crossed effect of T° and an other factor (sediment cover)

Hyp: Oxygen demand is supposed to increase with T°, and oxygen disponibility is supposed to decrease with sediments

- Domesticated population (INRA stock)
- Exposition of eggs to a double gradient of T° and sediment concentration in microplates

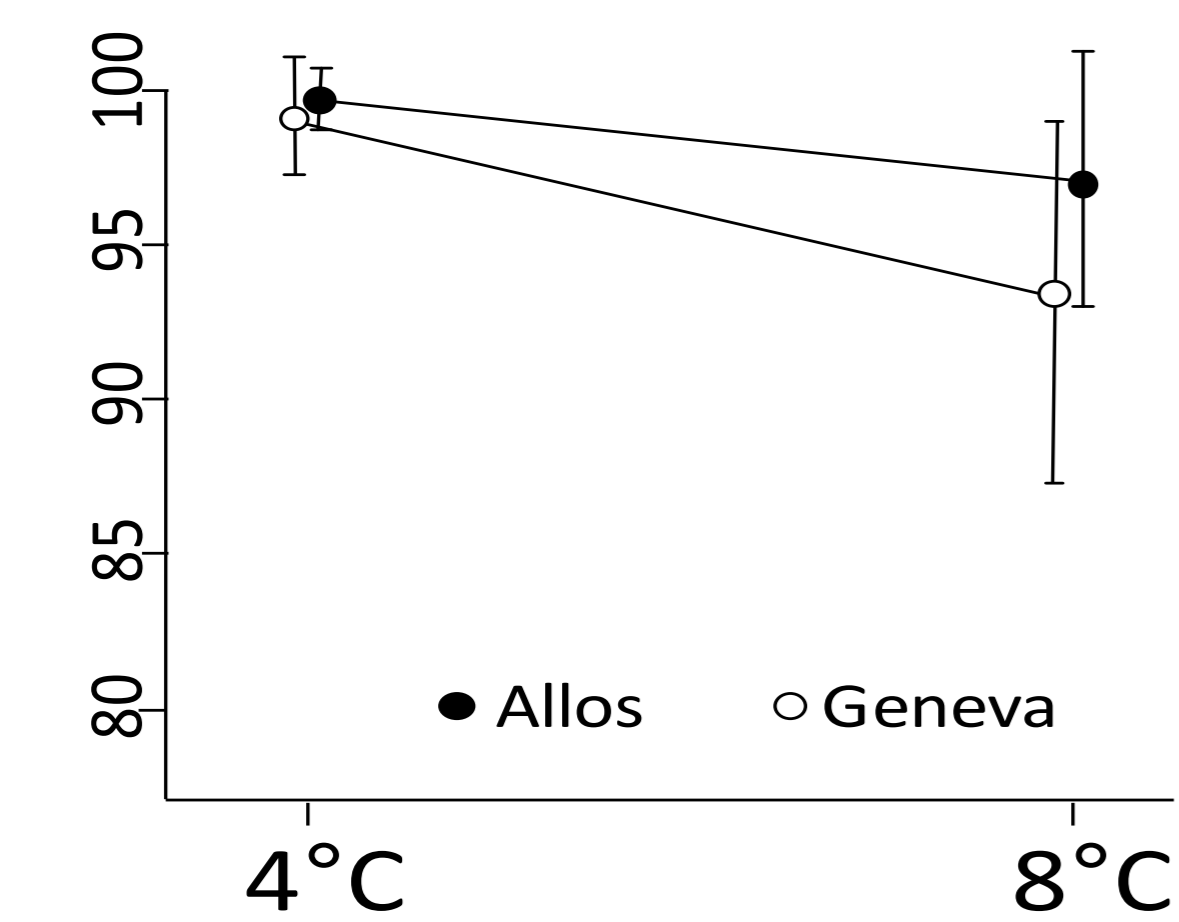


Response variables: ecology and physiology approach

1-'Basic' ecological traits and reaction norms

Survival, timing of development, size at different stages + malformations

Survival (eyed-hatched)



3- Ecophysiological tradeoffs

How physiology shapes life-history tradeoffs?

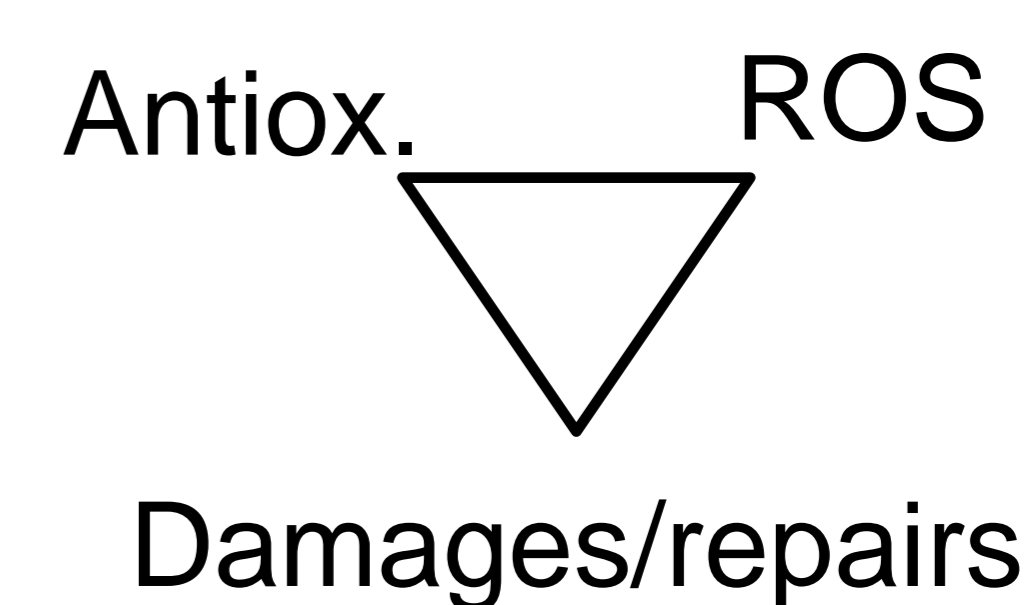
Resource allocation

growth maintenance

2-Analysis of oxidative balance

Quantification of defences and damages from/of reactive oxygen species (ROS)

Temperature, sediments, ... → metabolism



The project

- Started 2015
- Funded by ONEMA (2015-2018) (~125k€)

- 1 PhD (Ministry grant)
- Experiment 1: test in 2015, running in 2016
- Experiment 2: test in 2016