



HAL
open science

Between local and global: changing in interactions concerning dairy factories: LFS-territory

Martine Napoleone, Christian Corniaux, F. Alavoine-Mornas, Virginie Baritaux, Jean-Pierre Boutonnet, S. Carvalho, Sylvie Cournut, Alain Havet, M. Houdart, Alexandre Ickowicz, et al.

► **To cite this version:**

Martine Napoleone, Christian Corniaux, F. Alavoine-Mornas, Virginie Baritaux, Jean-Pierre Boutonnet, et al.. Between local and global: changing in interactions concerning dairy factories: LFS-territory. 64. Annual Meeting of the European Federation of Animal Science (EAAP), Aug 2013, Nantes, France. 665 p. hal-01595423

HAL Id: hal-01595423

<https://hal.science/hal-01595423v1>

Submitted on 3 Jun 2020

HAL is a multi-disciplinary open access archive for the deposit and dissemination of scientific research documents, whether they are published or not. The documents may come from teaching and research institutions in France or abroad, or from public or private research centers.

L'archive ouverte pluridisciplinaire **HAL**, est destinée au dépôt et à la diffusion de documents scientifiques de niveau recherche, publiés ou non, émanant des établissements d'enseignement et de recherche français ou étrangers, des laboratoires publics ou privés.

Between local and global: changing in interactions concerning dairy factories: LFS-territory

M. Napoléone¹, C. Corniaux², F. Alavoine-Mornas³, V. Barrिताux⁴, J.P. Boutonnet¹, S. Carvalho⁵, S. Cournut⁶, A. Havel⁷, M. Houdart¹, A. Ickowicz², S. Madelrieux³, H. Morales⁸, R. Pocard² and J.F. Tourrand²

¹INRA, SAD Selmet, Supagro Montpellier, 34000, France, Metropolitan, ²Cirad, ES Selmet, Supagro, Montpellier, 34000, France, ³IRSTEA, St Martin d'hières, 38402, France, ⁴IRSTEA, UMR 1273, Aubières, 63172, France, Metropolitan, ⁵EMBRAPA, Guama, Belem, Brazil, ⁶VetAgro Sup, UMR 1273, Clermont-Ferrand, 63000, France, Metropolitan, ⁷INRA, SAD, Thiverval Grignon, 78850, France, Metropolitan, ⁸IPABA, Montevideo, 3802, Uruguay; martine.napoleone@supagro.inra.fr

The changes affecting farming, operating between local and global, are important concerning milk processing. How these changes express themselves locally? What consequences concerning strategies of processing firms and concerning livestock farming systems? Developing diachronic studies we analyze interactions between marketing strategies of milk processing factories, livestock farming systems and consequences of these changes at local scales. Comparing contrasted situations (France, South America, Vietnam and Senegal), we found mostly two contrasted dynamics: (1) a process of globalisation (concentration of operators, increasing importance of long food chains, location of farms in high productivity areas, intensification of farming practices); (2) a process of strengthening relationship between product and local specificity (emphasizing local image and the link between product and the 'terroir', handicraft processes of transformation), increasing of local marketing channels, farming practices valorizing a diversity of local resources. Intermediating between production and distribution, dairy factories are at the core of these two dynamics. We will present the methodologies employed to characterize the studied situations. From examples we will illustrate how these two dynamics are emerging and operate. We will discuss then how in a same place complementarity, tensions or exclusions may appear between these two dynamics.

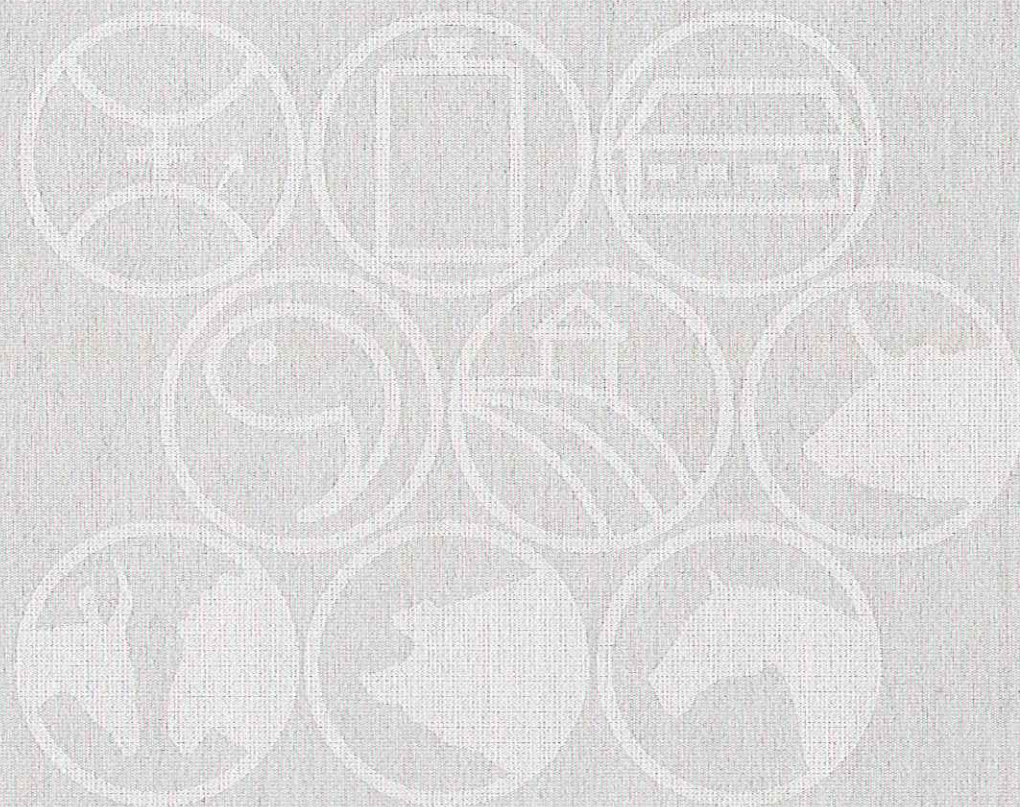
Determinants of crop rotation choices by pig farmers in Brittany

G. Martel¹, E. Tersiguel², J.-L. Giteau² and Y. Ramonet²

¹INRA, SAD-Paysage, 65, rue de Saint Brieuc, 35000 Rennes, France, ²Chambre d'agriculture de Bretagne, 4, avenue du Chalutier Sans Pitié, 22195 Plérin, France; gilles.martel@rennes.inra.fr

Pig farms in Brittany have on average 65 ha of cultivated area (UAA). Although these farms can represent the main land use of an area, there is very little data on how pig farmers use their UAA and on the links between crop rotations and production system. The aim of this study is to review the diversity of crop rotations of pig farms and to identify factors influencing their choice. A survey was carried out in 28 swine farms in Brittany. The survey sample is heterogeneous in size (number of animals and UAA), in effluent management and in existence of a feed production plan on farm (FPP). Content analysis of surveys shows that crop rotation are related to several structural criteria (farm feed supply, effluent management, plot pattern), but also to economical, agronomical and workforce characteristics. A principal component analysis with hierarchical clustering brings out three types of crop rotation: (1) one mainly composed of wheat and maize (80% of the UAA), found in specialized farms with FPP; (2) one more diverse with forage crops and mainly found in mixed herds of cattle and pigs; (3) one with a greater presence of oilseed rape and a variety of grains but less maize, and corresponding to specialized pig farms without FPP. Our study therefore highlights a limited range of crop rotation which are mainly explained by the farm structure (presence of cattle, FPP and to a lesser extent the plot pattern) and regulatory constraints on the management of livestock manure. We did not found a relation with the farm size (UAA and number of animals) which can be explain by a generalized over capacity production in the sample (most of the farms should have at least twice their UAA to be able to feed their herd). Our results suggest the interest of further discussion of the evolution of land use in areas with a high density of pig production, especially concerning a self-sufficiency orientation.

Book of Abstracts of the 64th Annual Meeting of the European Federation of Animal Science



**Book of abstracts No. 19 (2013)
Nantes, France
26 - 30 August 2013**

Book of Abstracts of the 64th Annual Meeting of the European Federation of Animal Science

Nantes, France, 26-30 August, 2013



EAAP Scientific Committee:

H. Simianer
J.E. Lindberg
C. Fourichon
M. Vestergaard
A. Bernués
A. Kuipers
L. Bodin
P. Knap
N. Miraglia
G. Pollott

Proceedings publication and Abstract Submission System (OASES) by



Wageningen Academic
P u b l i s h e r s

ISBN: 978-90-8686-228-3
e-ISBN: 978-90-8686-782-0
DOI: 10.3920/978-90-8686-782-0

ISSN 1382-6077

First published, 2013

© Wageningen Academic Publishers
The Netherlands, 2013

This work is subject to copyright. All rights are reserved, whether the whole or part of the material is concerned. Nothing from this publication may be translated, reproduced, stored in a computerised system or published in any form or in any manner, including electronic, mechanical, reprographic or photographic, without prior written permission from the publisher:
Wageningen Academic Publishers
P.O. Box 220
6700 AE Wageningen
The Netherlands
www.WageningenAcademic.com
copyright@WageningenAcademic.com

The individual contributions in this publication and any liabilities arising from them remain the responsibility of the authors.

The designations employed and the presentation of material in this publication do not imply the expression of any opinion whatsoever on the part of the European Federation of Animal Science concerning the legal status of any country, territory, city or area or of its authorities, or concerning the delimitation of its frontiers or boundaries.

The publisher is not responsible for possible damages, which could be a result of content derived from this publication.