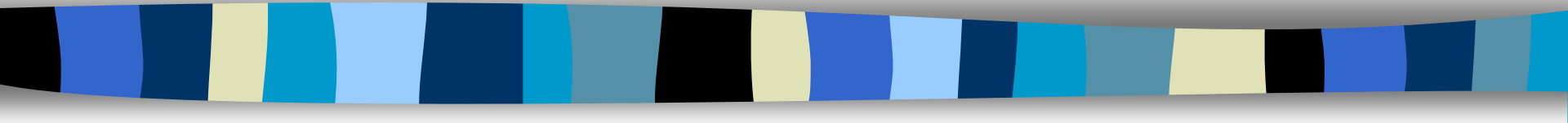


How to keep a Virtual Library Active ?



Mannina B., Quoniam L., Rostaing H.

CRRM

<http://crrm.univ-mrs.fr>



Hold a Virtual Library Active ?

The different methods.

Manual

The Webmaster must find new links to add.

Semi-Automatic

Somebody use a CGI program to add a new link, and the Webmaster must verify this new link.

Automatic

The Webmaster must configure only once the software for create the new Virtual Library.

Hold a Virtual Library



Manual Method



Congress



Book



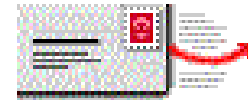
News



Expert



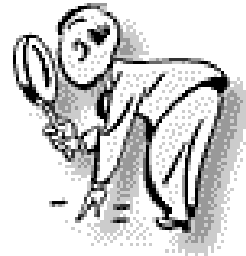
**Internet
(WWW)**



**Mailing
List**



Informal



**WebMaster
Virtual
Library**



**Add a new link to the
Virtual Library**



Manual Method

Advantage

- Internet Links are relevant.
- The Webmaster choose only relevant Internet Links.

Disadvantage

- The Webmaster must test frequently the new and the old internet link.
- The Virtual Library depends on the time that the webmaster allocate to it.
- The Internet Links are not exhaustive.

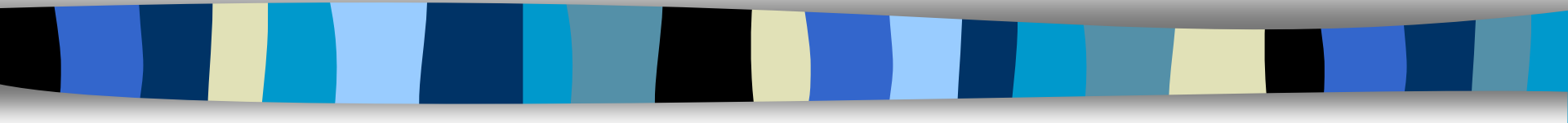
Update

- Once a Week

Time spend

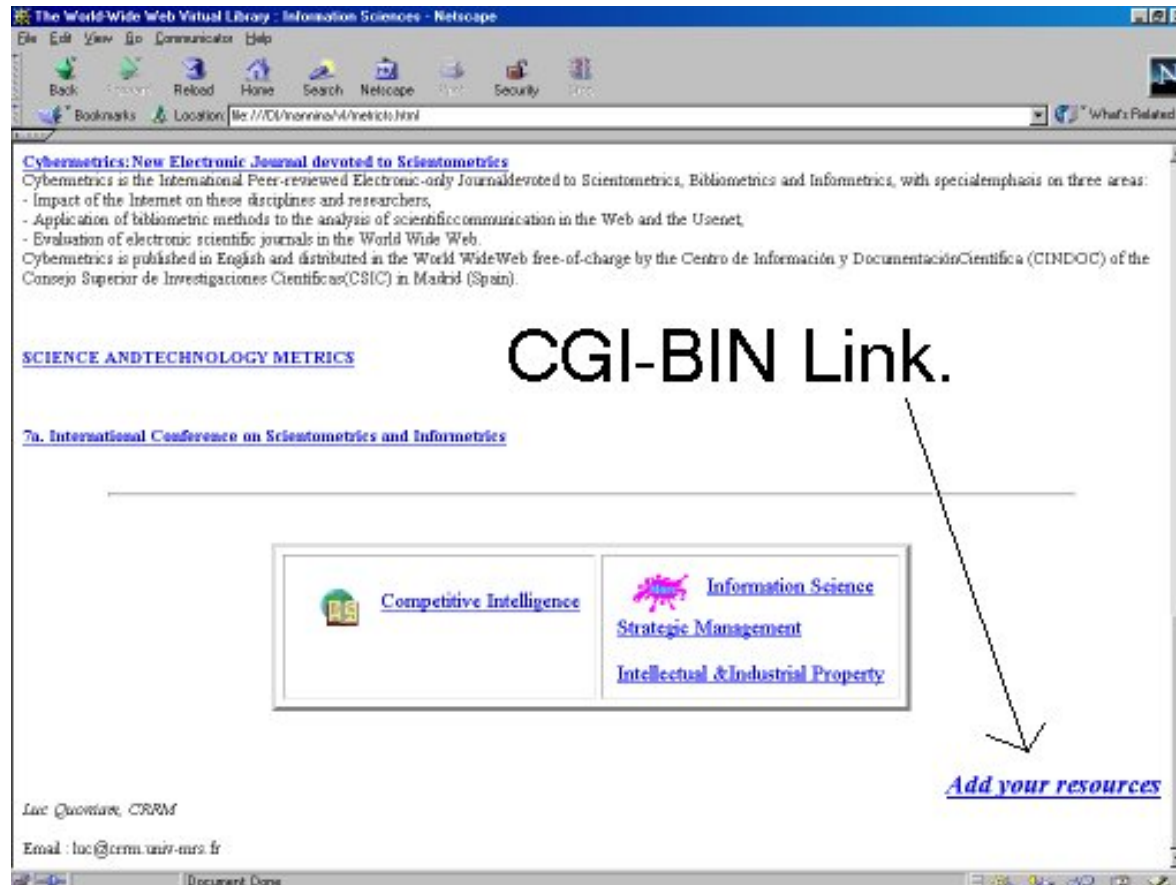
- Frequently

Hold a Virtual Library



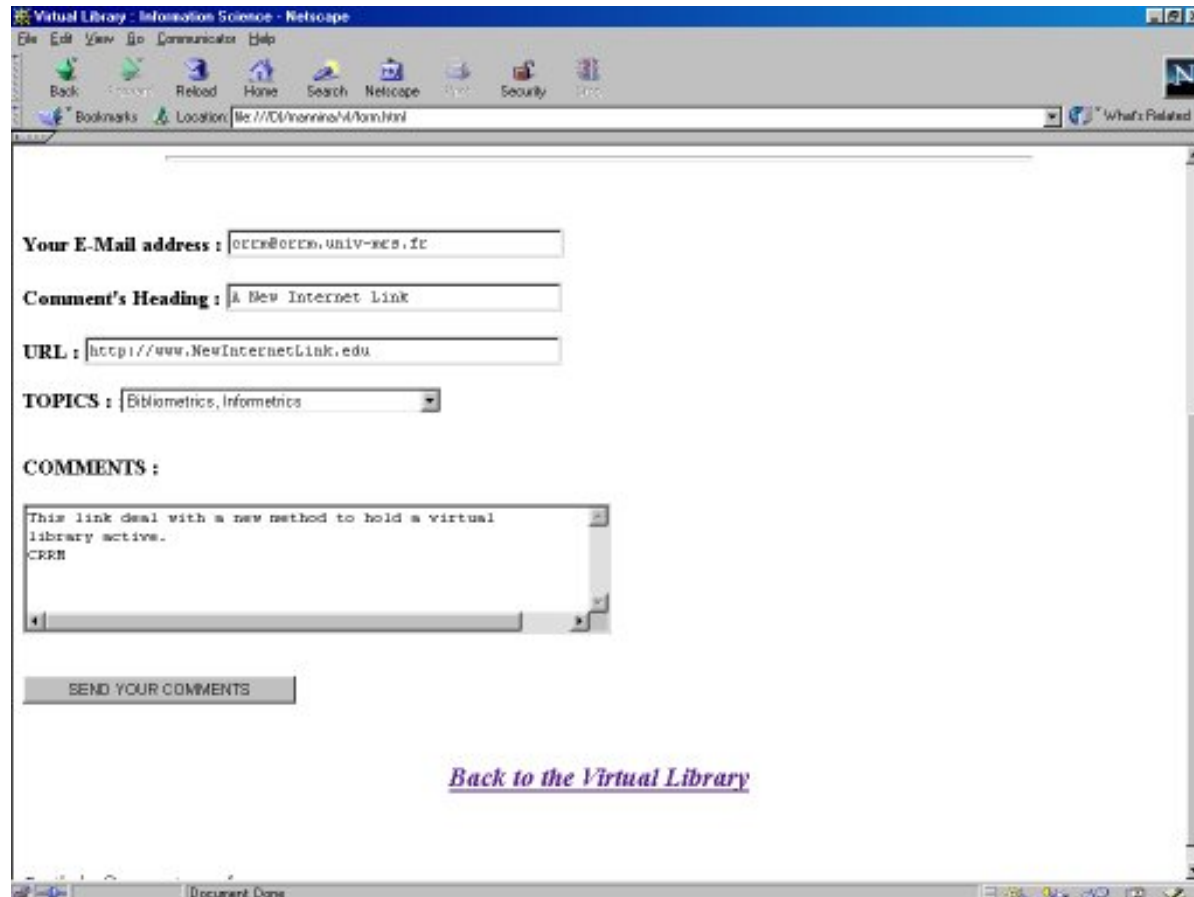
Semi-Automatic Method

Semi-Automatic - STEP 1/3



HomePage of the Virtual Library
CGI link "Add Your Ressources"

Semi-Automatic - STEP 2/3



The screenshot shows a Netscape browser window titled "Virtual Library - Information Science - Netscape". The address bar shows "file:///C:/nonlineM/Non.html". The form contains the following fields:

- Your E-Mail address :**
- Comment's Heading :**
- URL :**
- TOPICS :**
- COMMENTS :**

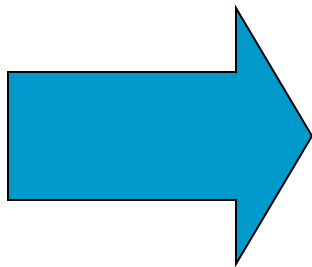
Below the comments field is a button labeled "SEND YOUR COMMENTS". At the bottom of the form is a link labeled [Back to the Virtual Library](#).

Common Gateway Interface (CGI)
"Add Your Ressources "

Semi-Automatic - STEP 3/3



WebMaster :
Verification of the new
Internet Link.



**Add a new Internet Link
in the Virtual Library**



Hold a Virtual Library Semi-Automatic

Advantage

- Internet Links are relevant.
- The new link does not only come from the Webmaster.

Disadvantages

- The Webmaster must test all the new internet links.
- The webmaster must also test the old internet links.
- The internet links are not exhaustive.
- A lot of new internet links are not relevant, the webmaster must cancel them.

Update

- Once a Week

Time spend

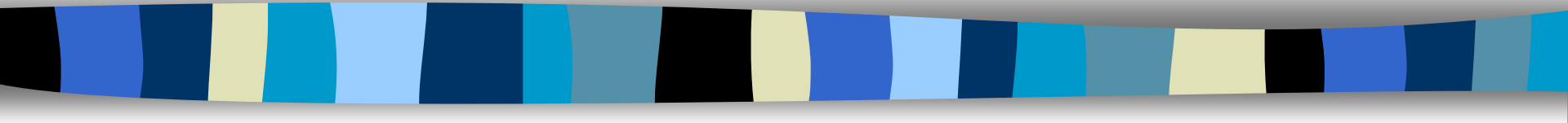
- 1 Hour a Week



CRRM Experience

- For 10 New links every month:
 - 7 links are not relevant.
 - 2 links are relevant.
 - And 1 link is very relevant.

Hold a Virtual Library



Automatic Method

Automatic - STEP 1/3

The screenshot shows a Netscape browser window titled "LES AGENTS INTELLIGENTS - Netscape". The address bar displays "http://193.51.109.166/mb/perso/index2.html". The main content area is titled "AURESYS CONFIG : SPECIALE" and contains the following configuration options:

- Recherche sur**: Le Web (dropdown)
- dans**: Tous les langages (dropdown)
- Requête ALTAVISTA :** bibliometr* scientometr* cybermetr* (text input)
- (and, or, not, near, *)**
- Ranking :** (text input)
- Date Inférieure :** (text input)
- Date Supérieure :** (text input) ex. 21/Mar/96
- Entrez votre Login**: mannina (text input)
- Nom de la Base**: Virtual3-30/04/99 (text input)
- Requête AURESYS :** bibliometr* scientometr* cybermetr* (text input)
- (and or not () *)**
- Profondeur de parcours de l'hypertexte**: 3 (dropdown)
- pour les pages contenant moins de**: 60 (text input)
- Caractéristique de parcou de la recherche**: liens hypertextes (dropdown)
- Pages Non Sélectionnées utilisées** (dropdown)
- Lancer la Recherche** (button)

The taskbar at the bottom shows "Document: chargé", "Démarrer", "LES AGENTS INTE...", and "Paint Shop Pro". The system clock shows "15:20".

Configuration of the Research

Automatic - STEP 2/3

RESULTAT DE LA RECHERCHE - Netscape

HOST / URLS - HOST / PERTINENCE - HOST / DOMAINE

Host Pointant Sur	Host Pointé Par	Pert.	Urls	Host	Informatif	Normal	GateWay	Formulaires
<->	>-<	272	2	ma161u06.u-3mrs.fr	0	2	0	0
<->	>-<	243	3	elb.cs.cfu.ca	1	3	0	0
<->	>-<	185	25	www.cyber-metrics.com	0	22	0	0
<->	>-<	167	1	www.cindoc.csic.es	1	0	0	0
<->	>-<	157	2	www.hi.is	0	2	0	0
<->	>-<	132	1	hisserv.com	0	1	0	0
<->	>-<	129	1	www.makomae.com	0	0	0	0

www.cindoc.csic.es
Normal, Formulaires, GateWay, Informatif
(167) : [Cybermetrics: Electronic Journal of scientometrics, bibliometrics and informetrics](#)

- Visualisation de la répartition des :
 - [Dates](#)
 - [Langues](#)
 - [Types de documents](#)
 - [Domaines](#)
- Visualisation [des emails](#)
- Visualisation [des pages Gateways](#)
- Visualisation [des pages Formulaires](#)
- Visualisation [des pages trouvées au format bibliographique](#)
- Information [sur la Recherche](#)
- [Téléchargement](#) de la recherche

INDEX

The Journal

Cybermetrics News
Editorial Board
Guide for Authors
Issues Contents
Vol. 1 (1997)
Vol. 2/3 (1998-99)

The Source

SCIENTOMETRICS
News
Research Groups
Associations

CYBERMetrics
International Journal of Scientometrics, Informetrics and Bibliometrics
ISSN 1137-5019

SCOPE

Cybermetrics is both an Electronic-only Journal and a Virtual Forum devoted to the state of the quantitative analysis of scholarly and scientific communications. It is open to world-wide researchers to publish and discuss their findings. Internet offers them new increased capabilities to distribute their results to a greater audience.

TOPICS

The topics covered are the methodologies and results of scientometric, bibliometric or informetric research. Although emphasis is placed on aspects related to Internet, Cybermetrics is not restricted to them, therefore some other subjects are accepted such as:

Application of **scientometric methodology** to the analysis of scientific communication in the Web and the Usenet, including the development of new Internet R&D indicators.

Document chargé

Démarrer RESULTAT DE LA ... Paint Shop Pro 15:26

New Virtual Library Automatic

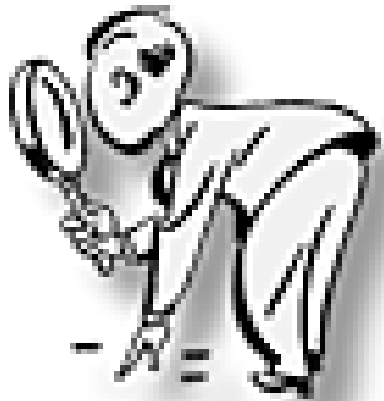
Result of the new Virtual Library

scientometry or scientometri* or bibliometri* or bibliometry or cybermetri* or cybermetry

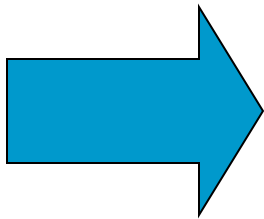
Selectionnés / Total	749 / 4138
Non Selectionnés & Taille	3389 / 364
Erreurs	622
Autres (Domaine, Protocol)	71

749 urls selected for **4138** urls visited (Depth 2)

Automatic - STEP 3/3



WebMaster do a
Low Verification



Add a new Virtual Library



Hold a Virtual Library Automatic

Advantage

- Internet Links are relevant.
- Saving lot of time.
- Update is quickly realised.
- Update can be also automatic.
- The exhaustivity is nearly total.

Disadvantage

- The webmaster must choose the good keywords for the research to have a relevant library.
- Virtual Library is an instantaneous picture of the web.

Update

- Once a Month

Time spendend

- Five Minutes a Month



CRRM Experience

- More than 700 results (~300 hosts).
- Friendly user-interface
- Possibilities of new process with the virtual library result (bibliometrics process).
- Easy to update.

Demonstration



Mannina B., Rostaing H., Quoniam L.

CRRM

<http://crrm.univ-mrs.fr>

Netscape File Edit View Go Communicator Help

Back Forward Reload Home Search Netscape Print Security Stop

Bookmarks Location: file:///D:/mannina/vl/annexe/Cyber0-2804/Cyber0-2804HS.html What's Related

[HOST / PERTINENCES](#) - [HOST / URLS](#) - [HOST / DOMAINE](#)

Host Pointant Sur	Host Pointé Par	Pert.	Urls	Host	Informatif	Normal	GateWay	Formulaire
<->	>-<	102	30	www.visit.com	8	21	0	1
<->	>-<	96	30	crrm.univ-mrs.fr	14	14	2	0
	>-<	82	29	www.foresightweb.com	8	20	0	1
		185	25	www.cyber-metrics.com	0	22	0	3
<->	>-<	94	17	www.cybermetrics.net	3	11	1	2
<->	>-<	76	17	sahara.fsw.leidenuniv.nl	6	7	1	3
	>-<	67	14	www.cybermetrix.co.uk	3	10	0	1
<->	>-<	99	12	www.cybermetric.com	5	4	0	3
<->	>-<	30	12	www.asis.org	11	0	0	1
<->	>-<	36	11	www.oclc.org	9	2	0	0
		74	11	www.ro.unsw.edu.au	0	6	5	0
<->	>-<	59	11	ai.it.nrc.ca	3	7	0	1
<->	>-<	39	10	www.the-scientist.library.upenn.edu	10	0	0	0
	>-<	121	10	www.cybermetrics.com	1	9	0	0
	>-<	40	9	bubl.ac.uk	6	0	0	0
	>-<	46	9	www.chem.uva.nl	5	4	0	0
<->	>-<	75	9	www.db.dk	7	2	0	0
	>-<	59	9	www.sussex.ac.uk	7	2	0	0
	>-<	37	8	www.dtic.mil	6	2	0	0
<->	>-<	55	8	tpac.gcatt.gatech.edu	4	4	0	0
<->	>-<	79	7	ix.db.dk	4	3	0	0
		30	7	www.dgps.de	0	0	0	7
	>-<	36	6	www.sri.com	5	1	0	0
		53	5	www.uni-duesseldorf.de	1	4	0	0

Document: Done

