



HAL
open science

Reservoir Characterization Using Inversion of a Combine Set of Geodetic Data, from Salt to Unconventional Exploitation

Severine Furst, Jean Chery, Bijan Mohammadi, Michel Peyret, Dominique
Dubucq, Antoine Jacq, Philippe Marchina

► **To cite this version:**

Severine Furst, Jean Chery, Bijan Mohammadi, Michel Peyret, Dominique Dubucq, et al.. Reservoir Characterization Using Inversion of a Combine Set of Geodetic Data, from Salt to Unconventional Exploitation. 79th EAGE Conference and Exhibition 2017 , Jun 2017, Paris, France. pp.12 - 15, 10.3997/2214-4609.201700987 . hal-01575426

HAL Id: hal-01575426

<https://hal.science/hal-01575426v1>

Submitted on 25 Aug 2017

HAL is a multi-disciplinary open access archive for the deposit and dissemination of scientific research documents, whether they are published or not. The documents may come from teaching and research institutions in France or abroad, or from public or private research centers.

L'archive ouverte pluridisciplinaire **HAL**, est destinée au dépôt et à la diffusion de documents scientifiques de niveau recherche, publiés ou non, émanant des établissements d'enseignement et de recherche français ou étrangers, des laboratoires publics ou privés.

Copyright

Reservoir Characterization Using Inversion of a Combine Set of Geodetic Data, from Salt to Unconventional Exploitation

S. Furst, J. Chéry, B. Mohammadi,
M. Peyret, D. Dubucq, A. Jacques, P. Marchina.

1 Introduction

The exploitation of natural resources in the subsurface is more challenging than ever. Two main issues concern (1) the optimization of reservoir exploitation and (2) the respect of environmental constraints (fauna and flora impacts, induced subsidence). During the prospection stage, oil and gas companies conduct geophysical surveys (seismic reflexion/refraction, borehole seismic, well logging) to estimate the potential of conventional and unconventional reservoirs. While extracting the resource, they can also monitor this extraction using similar surveys. These methodologies have provided stable and reliable results but they remain expensive and limited. To provide additional information about the consequences of extraction, geodetic surveys using GPS, InSAR and tilt measurements can be considered. Although geophysical and geodetic surveys provide numerous data, one can not directly deduce the required information for production optimization and hazard assessment. Geomechanical models are necessary to gather the collected data and therefore to characterize reservoirs and the risks associated to their exploitation.

Reservoir production implies injection and withdrawal of a substantial volume of fluid ([Geertsma, 1973](#); [Mossop and Segall, 1999](#)). By doing so, the reservoir is subject to volume changes and deformation. The internal strain induces displacements in the surrounding medium. At the surface, uplift (increase of volume) or subsidence (decrease of volume) can be significant enough to be measurable by various instruments with different sensitivities. In order to prevent industrial damage and to assess the environmental impact of resource extraction, the surface deformation caused by a given production scenario must be accurately monitored and predicted. Several studies show the interest of inverting one type of geodetic data to monitor and characterize reservoirs (InSAR: e.g. [Vasco et al. \(2008\)](#); tilt: e.g. [Astakhov et al. \(2012\)](#)).

Dataset containing several types of data is seldom for geological reservoirs. For this reason, inversions of multiple datasets are yet uncommon. Our ongoing research aims at combining GPS, InSAR, levelling, tilt, borehole breakouts and gravimetric data from a mining exploitation in Vauvert, France, operated by KemOne (Figure 1). From 8 to 12 wells are continuously extracting the salt from lower saliferous layer at a depth ranging from 2000 to 3000 m depth (Figure 2). This configuration provides a good analogous to conventional and non-conventional oil and gas reservoirs. Therefore, Vauvert site and its numerous available data (InSAR, levelling, pressure at wellhead, quantity of injected water, extracted brine with the saturation) appears to be an ideal case for data fusion and inverse problem.

[Maisons and Raucoules \(2006\)](#) used 16 SAR images between 1993-1999 to characterize the subsidence phenomenon observed in Vauvert. By assuming a constant deformation rate through time, they compared InSAR results to levelling data. Our approach intend to combine those data before the inversion. Although viscoelastic models ([Bonafede and Ferrari, 2009](#)) could be considered in this study, we choose to only construct elastic models to approximate the salt reservoir. By making this assumption and working on Vauvert salt exploitation, we want to find the resolution capacity at depth of our geodetic dataset and to estimate its optimal distribution accordingly to the exploitation goal.

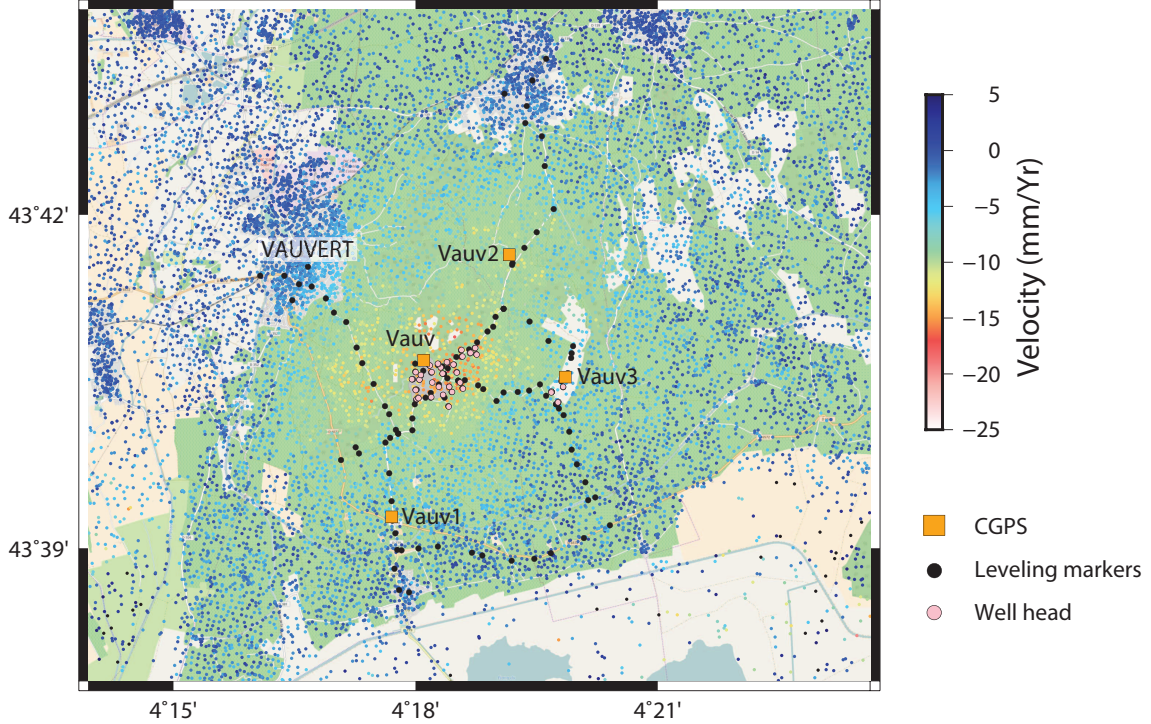


Figure 1: Distribution of InSAR data (mean velocity along the satellite Line Of Sight) over the site of the salt extraction. The color scale indicates the subsidence with warmer color for more significant subsidence. The bowl of subsidence is centered on the exploitation and has a diameter of about 8 km. Orange squares mark the position of continuous GPS, black dots the levelling markers and pink dots the well head.

2 Method and theory

Both analytical and numerical models can be considered to simulate the surface deformation. The former usually consider simple mathematical relations expressing the surface deformation induced by spherical (Geertsma, 1973; Mogi, 1958; Mossop and Segall, 1999), cylindrical (Yukutake and Tachinaka, 1967) or ellipsoidal sources (Davis, 1986; Yang et al., 1988) but also due to shear and tensile faults (Okada, 1985) and vertical pipes (Bonaccorso and Davis, 1999). Besides, those models assume a homogenous and infinite half space and do not account for complex geometries which can only be treated using numerical models.

In this study, we focus on analytical models to simulate the volume change of a cavity due to salt extraction (Figure 2). We develop a mathematical framework and computational implementation for combining and inverting geodetic data of various type (Figure 1). Our approach consists in finding the relation between the surface deformation and the distribution of volumetric changes within the reservoir. The changes in volume can be isotropic or anisotropic depending of reservoir properties and fracturation. For this reason, we choose to construct two separate forward models: a superposition of (1) point sources (Mogi, 1958; Mossop and Segall, 1999) and (2) another built on a superposition of shear and tensile fractures (Okada, 1985). Both models consider a semi-infinite elastic body subjected to a change of volume (Figure 2). In order to discriminate between distinct sources we use *a priori* information available at the mining exploitation.

By solving an inverse problem, we aim at estimating the best plausible distribution of volume changes m explaining the observed data d_i (with i standing for GPS, InSAR, levelling or borehole strain data).

$$d_i = G_i m \quad (1)$$

where G_i is a matrix representing the governing equations linking the model parameters to the observed data, m and d_i being vectors. The main difficulty of this theory is the non-uniqueness of the solution which can be reduced using *a priori* information. Among these *a priori* information, we set the active sources positions while free parameters are the volume change associated to each source. In our approach the search for the optimal model parameter m consists in minimizing

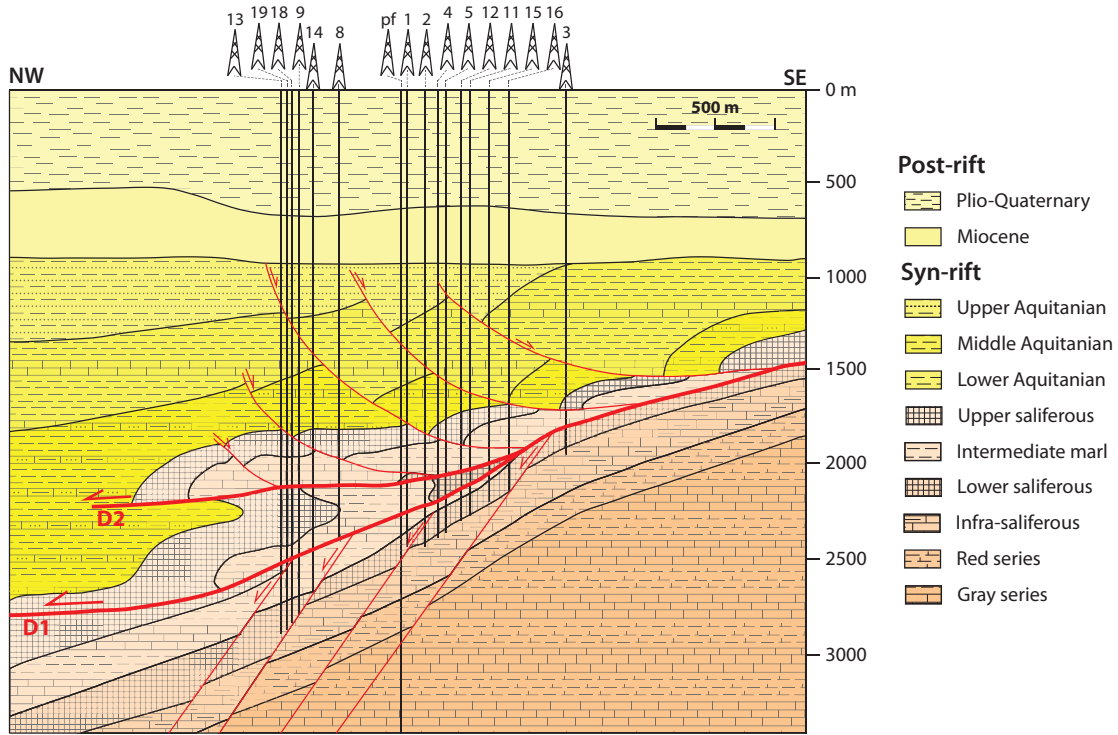


Figure 2: Cross-section of the geological structural scheme of the salt exploitation in Vauvert (from Valette and Benedicto (1995)). The salt is mainly extracted from the lower saliferous layer.

the distance between the observed data d_i^* and the predicted data from the forward model $d_i(m)$, namely the cost function $J(m)$.

$$J_i(m) = \|d_i^* - d_i(m)\|_{\sigma^{-1}}^2 \quad (2)$$

where the subscript σ^{-1} means that the L_2 -norm is weighted by the inverse of the covariance matrix of the geodetic measurements. Individual cost functions are considered for each type of data (GPS, InSAR, tilt, levelling) and a weighting factor α_i is attributed to each functional. The final cost function corresponds to the linear sum of all the individual functional weighted by their associated α_i such as:

$$J(p) = \sum_{i=1}^4 \alpha_i J_i \quad (3)$$

Although we may mathematically optimize α_i values for our site configuration, they may depend on two other factors: the desired physical parameter (e.g. hydraulic fracture orientation) and the cost or quality goal of the operator. These latter factor can help refining the geodetic survey by estimating the best type of data but also their distribution over a selected area.

3 Conclusions

We implemented the above optimization approach by combining multiple geodetic data including Envisat and Sentinel InSAR, continuous and campaign GPS, twenty years of levelling and borehole strain data. Apart from inferring geodetic data to model the volume changes of the reservoir, we propose a suitable physical approach to link volume strain (Mosso and Segall, 1999) to pressure data, volume of injected water, extracted brine and saturation. We searched optimal weighting factors of the functional in order to optimize the geodetic survey. To access reservoir properties, the distribution and the type of data to consider could be supplied according to the issues of the exploited field.

4 Acknowledgements

The PhD of S. Furst is supported by the Total Company and the LabEx NUMEV project (n° ANR-10-LABX-20) funded by the "Investissements d'Avenir" French Government program, managed by the French National Research Agency (ANR).

References

- Astakhov, D. K., Roadarmel, W. H., Nanayakkara, a. S., and Service, H. (2012). SPE 151017 A New Method of Characterizing the Stimulated Reservoir Volume Using Tiltmeter-Based Surface Microdeformation Measurements. (Mayerhofer 2010):1–15.
- Bonaccorso, A. and Davis, P. M. (1999). Models of ground deformation from vertical volcanic conduits with application to eruptions of Mount St. Helens and Mount Etna. *Journal of Geophysical Research*, 104:10531.
- Bonafede, M. and Ferrari, C. (2009). Analytical models of deformation and residual gravity changes due to a Mogi source in a viscoelastic medium. *Tectonophysics*, 471(1-2):4–13.
- Davis, P. M. (1986). Surface deformation due to inflation of an arbitrarily oriented triaxial ellipsoidal cavity in an elastic half-space, with reference to Kilauea volcano, Hawaii. *Journal of Geophysical Research*, 91(B7):7429.
- Geertsma, J. (1973). Land subsidence above compacting oil and gas reservoirs. *Journal of Petroleum Technology*, (June 1973):734–744.
- Maisons, C. and Raucoules, D. (2006). Monitoring of slow ground deformation by satellite differential radar-interferometry . A reference case study . In *Solution Mining Research Institute*, Brussels.
- Mogi, K. (1958). Relations between the eruptions of various volcanoes and the deformations of the ground surfaces around them.
- Mossop, A. and Segall, P. (1999). Volume strain within The Geysers geothermal field. *Journal of Geophysical Research*, 104:29113–29131.
- Okada (1985). Surface deformation due to shear and tensile faults in a half-space. *International Journal of Rock Mechanics and Mining Sciences Geomechanics Abstracts*, 75(4):1135–1154.
- Valette, M. and Benedicto, A. (1995). Gravity thrust halotectonics in the extensional Camargue basin (Gulf of Lion margin, SE France). *Bulletin de la Société Géologique de France*, 166(2):137–147.
- Vasco, D. W., Ferretti, A., and Novali, F. (2008). Reservoir monitoring and characterization using satellite geodetic data: Interferometric synthetic aperture radar observations from the Krechba field, Algeria. *Geophysics*, 73(6):WA113.
- Yang, X.-M., Davis, P. M., and Dieterich, J. H. (1988). Deformation from inflation of a dipping finite prolate spheroid in an elastic half-space as a model for volcanic stressing. *Journal of Geophysical Research*, 93(7):4249.
- Yukutake, T. and Tachinaka, H. (1967). Geomagnetic variation associated with stress change within a semi infinite elastic earth caused by a cylindrical force source. *Bulletin of the Earthquake Research Institute*, 45:785–798.