



HAL
open science

Chirality induced interface currents in the Chalker–Coddington model

Joachim Asch, Olivier Bourget, Alain Joye

► **To cite this version:**

Joachim Asch, Olivier Bourget, Alain Joye. Chirality induced interface currents in the Chalker–Coddington model. *Journal of Spectral Theory*, 2019, 9 (4), pp.1405-1429. 10.4171/JST/281 . hal-01572592

HAL Id: hal-01572592

<https://hal.science/hal-01572592v1>

Submitted on 7 Aug 2017

HAL is a multi-disciplinary open access archive for the deposit and dissemination of scientific research documents, whether they are published or not. The documents may come from teaching and research institutions in France or abroad, or from public or private research centers.

L'archive ouverte pluridisciplinaire **HAL**, est destinée au dépôt et à la diffusion de documents scientifiques de niveau recherche, publiés ou non, émanant des établissements d'enseignement et de recherche français ou étrangers, des laboratoires publics ou privés.

Chirality induced Interface Currents in the Chalker–Coddington Model ^{*†}

Joachim Asch [‡], Olivier Bourget [§], Alain Joye [¶]

6/8/17

Abstract

We study transport properties of a Chalker–Coddington type model in the plane which presents asymptotically pure anti-clockwise rotation on the left and clockwise rotation on the right. We prove delocalisation in the sense that the absolutely continuous spectrum covers the whole unit circle. The result is of topological nature and independent of the details of the model.

1 Introduction

By a Chalker–Coddington (aka: CC–model) we understand a unitary operator

$$U_{CC} : \ell^2(\mathbb{Z}^2; \mathbb{C}) \rightarrow \ell^2(\mathbb{Z}^2; \mathbb{C})$$

defined by a collection of 2×2 scattering matrices, i.e.: a map

$$\mathbf{S} : \mathbb{Z}^2 \rightarrow U(2), \quad (j, k) \mapsto S_{j,2k} \in U(2). \quad (1)$$

Denoting by $|j, k\rangle$ the canonical basis vectors of $\ell^2(\mathbb{Z}^2; \mathbb{C})$, \mathbf{S} defines U_{CC} according to figure 1 by:

*Supported by FONDECYT 1161732, and ECOS-Conicyt C15E10

†Supported by the LabEx PERSYVAL-Lab (ANR-11- LABX- 0025-01) funded by the French program Investissement d’Avenir

‡CNRS, CPT, Aix Marseille Université, Université de Toulon, Marseille, France, asch@cpt.univ-mrs.fr

§Departamento de Matemáticas Pontificia Universidad Católica de Chile, Av. Vicuña Mackenna 4860, C.P. 690 44 11, Macul Santiago, Chile

¶Université Grenoble Alpes, CNRS Institut Fourier, 38000 Grenoble, France

$$\begin{aligned}
\begin{pmatrix} U_{CC}|2j, 2k\rangle \\ U_{CC}|2j+1, 2k-1\rangle \end{pmatrix} &:= S_{2j,2k} \begin{pmatrix} |2j, 2k-1\rangle \\ |2j+1, 2k\rangle \end{pmatrix}, \\
\begin{pmatrix} U_{CC}|2j+1, 2k\rangle \\ U_{CC}|2j+2, 2k+1\rangle \end{pmatrix} &:= S_{2j+1,2k} \begin{pmatrix} |2j+2, 2k\rangle \\ |2j+1, 2k+1\rangle \end{pmatrix}.
\end{aligned} \tag{2}$$

According to the parity of the first index we will speak of odd and even scattering

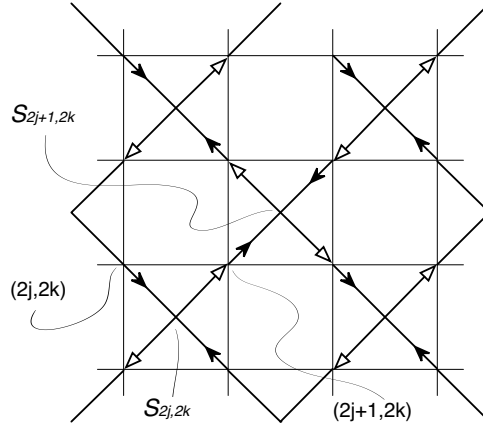


Figure 1: A Chalker–Coddington model with its incoming (solid arrows) and outgoing links

matrices $S_{j,2k}$.

The model provides an effective description of one time step of the motion of an electron in a plane subject to a strong perpendicular magnetic field and electric potential whose main physical characteristics are encoded by the scattering matrices. For details on its known physical and mathematical features, we refer to [10, 16, 1, 2]; here we just mention that the great interest of this effective model stems from its ability to describe the delocalisation transition of the Quantum Hall effect.

If all scattering matrices $S_{j,2k}$ are off-diagonal then the motion is an anti-clockwise rotation on four dimensional subspaces (aka: plaquettes); if they are all diagonal the motion is clockwise on (different) plaquettes. It is known that certain random perturbations of these cases display dynamical localisation [2]. The critical case, in the sense of stable delocalisation, is supposed to occur when all matrix entries are of modulus $1/\sqrt{2}$, [10]. On the other hand it is known that the translation invariant critical case has trivial Chern numbers [12]. In the present contribution, we investigate the spectral and transport properties on an interface made of arbitrary scattering matrices between two phases of different chirality. In particular we suppose that the motion

is anti-clockwise in a left half-plane and clockwise in a right half-plane as depicted in figure 2.

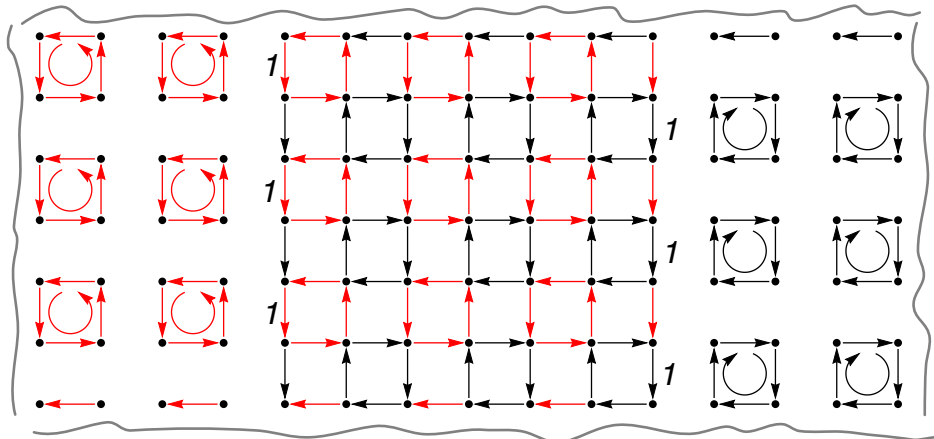


Figure 2: The invariant strip; the indicated transition amplitudes 1 on the boundaries are imposed by the different chiralities

We observe that the clockwise and anti-clockwise phases induce boundary conditions on the interface making it an invariant strip under U_{CC} . Then we consider a natural flux observable in configuration space and prove that the spectrum of U_{CC} restricted to the interface contains a non-trivial absolutely continuous component that covers the whole circle. This is independent of the details inside the interface. Our argument makes use of a topological quantity which comes as the index of a pair of projections. This has been used before for projections in energy space, in particular for the proof that the quantum Hall conductance is an index [5, 6] and for the equivalence of Bulk and Edge Conductance [11, 13]. The present point of view is in configuration space and inspired by [15]. Implications concerning the absolutely continuous spectrum seem to be new. For the sake of comparison, we recall that CC models with certain types of random scattering matrices, restricted to a strip with periodic boundary conditions displays dynamical localisation [1].

In the special case where the CC model is invariant under translations parallel to the interface, we show that the continuous spectrum of its restriction to the interface is purely absolutely continuous. On the other hand, showing the presence of absolutely continuous spectrum by Mourre's method requires more information on the model [3]. We remark that the present results can be adapted for two-dimensional coined Quantum Walks (see e.g. [3]) which we will do elsewhere.

2 Properties of the model

Next we discuss some basic properties of the model: its symmetry under parity, the special cases of (anti-)clockwise motion and the continuous dependence on the defining scattering matrices and the occurrence of an invariant strip interface.

Lemma 2.1. *i) For any collection $\{S_{j,2k} \in U(2) \text{ s.t. } (j, k) \in \mathbb{Z}^2\}$, U_{CC} is unitary.*

ii) Let \mathcal{I} be the involutive unitary parity operator defined by $\mathcal{I}|j, k\rangle = (-1)^{j+k}|j, k\rangle$. Then

$$\mathcal{I}U_{CC}\mathcal{I} = -U_{CC} \Rightarrow \sigma(U_{CC}) = -\sigma(U_{CC}).$$

iii) The adjoint U_{CC}^ reads*

$$\begin{aligned} \begin{pmatrix} U_{CC}^*|2j, 2k-1\rangle \\ U_{CC}^*|2j+1, 2k\rangle \end{pmatrix} &= S_{2j,2k}^* \begin{pmatrix} |2j, 2k\rangle \\ |2j+1, 2k-1\rangle \end{pmatrix}, \\ \begin{pmatrix} U_{CC}^*|2j+2, 2k\rangle \\ U_{CC}^*|2j+1, 2k+1\rangle \end{pmatrix} &= S_{2j+1,2k}^* \begin{pmatrix} |2j+1, 2k\rangle \\ |2j+2, 2k+1\rangle \end{pmatrix}. \end{aligned}$$

Denote the odd n-sphere by

$$\mathbb{S}^n := \left\{ z \in \mathbb{C}^{\frac{n+1}{2}}; \sum_j |z_j|^2 = 1 \right\}.$$

To parametrize the scattering matrices $S_{j,2k}$, we use the homeomorphism

$$S : \mathbb{S}^1 \times \mathbb{S}^3 \rightarrow U(2), \quad (q, (r, t)) \mapsto q \begin{pmatrix} r & -t \\ \bar{t} & \bar{r} \end{pmatrix}. \quad (3)$$

So \mathbb{S} is parametrised by a function $\mathbb{Z} \times 2\mathbb{Z} \mapsto \mathbb{S}^1 \times \mathbb{S}^3$, c.f.: figure 3.

One gets the following characterisations of the right and left turning phases, as well as the corresponding definition of plaquettes.

Lemma 2.2. *In case all scattering matrices are diagonal, i.e. $t_{j,2k} = 0 \Leftrightarrow |r_{j,2k}| = 1$, the subspaces*

$$\mathbb{H}_{\mathbb{C}}^{j,k} := \text{span}\{|2j, 2k\rangle, |2j, 2k-1\rangle, |2j-1, 2k-1\rangle, |2j-1, 2k\rangle\}$$

are invariant under U_{CC} . The dynamics on those plaquettes is that of right turners with representation in the corresponding basis

$$U_{CC}|_{\mathbb{H}_{\mathbb{C}}^{j,k}} = \begin{pmatrix} 0 & 0 & 0 & q_{2j-1,2k}r_{2j-1,2k} \\ q_{2j,2k}r_{2j,2k} & 0 & 0 & 0 \\ 0 & q_{2j-1,2k-2}\bar{r}_{2j-1,2k-2} & 0 & 0 \\ 0 & 0 & q_{2j-2,2k}\bar{r}_{2j-2,2k} & 0 \end{pmatrix}$$

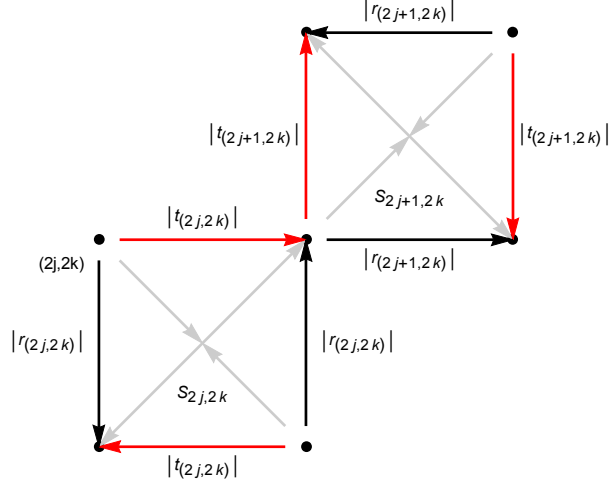


Figure 3: The labeling of the matrix-elements of $S_{j,2k}$

and spectrum $e^{\alpha_{2k,2j}^R} \{1, i, -1, -i\}$, where

$$e^{4\alpha_{2k,2j}^R} = q_{2j,2k} r_{2j,2k} q_{2j-1,2k-2} \overline{r_{2j-1,2k-2}} q_{2j-2,2k} \overline{r_{2j-2,2k}} q_{2j-1,2k} r_{2j-1,2k}$$

is the total phase accumulated on the scattering events.

In case all scattering matrices are off-diagonal, i.e. $r_{j,k} = 0 \Leftrightarrow |t_{j,k}| = 1$, the subspaces

$$\mathbb{H}_{\mathbb{C}}^{j,k} := \text{span}\{|2j, 2k\rangle, |2j+1, 2k\rangle, |2j+1, 2k+1\rangle, |2j, 2k+1\rangle\}$$

are invariant under U_{CC} , and the dynamics on those plaquettes is that of left turners with representation in the corresponding basis

$$U_{CC}|_{\mathbb{H}_{\mathbb{C}}^{j,k}} = \begin{pmatrix} 0 & 0 & 0 & q_{2j-1,2k} \overline{t_{2j-1,2k}} \\ -q_{2j,2k} t_{2j,2k} & 0 & 0 & 0 \\ 0 & -q_{2j+1,2k} t_{2j+1,2k} & 0 & 0 \\ 0 & 0 & q_{2j,2k+2} \overline{t_{2j,2k+2}} & 0 \end{pmatrix}$$

and spectrum $e^{\alpha_{2k,2j}^L} \{1, i, -1, -i\}$, where

$$e^{4\alpha_{2k,2j}^L} = q_{2j,2k} t_{2j,2k} q_{2j+1,2k} t_{2j+1,2k} q_{2j,2k+2} \overline{t_{2j,2k+2}} q_{2j-1,2k} \overline{t_{2j-1,2k}}$$

is the total phase accumulated on the scattering events.

Next we will show that the Chalker-Coddington model is uniformly Lipschitz in its defining scattering matrices, (1). Denoting the model defined by \mathbf{S} by $U_{CC} \equiv U_{CC}(\mathbf{S})$ we have:

Lemma 2.3. *There exists a $c > 0$ such that for all \mathbf{S}, \mathbf{S}'*

$$\|U_{CC}(\mathbf{S}) - U_{CC}(\mathbf{S}')\| \leq c \|\mathbf{S} - \mathbf{S}'\|_\infty.$$

Proof. For the homeomorphism defined in (3) it holds for the Hilbert Schmidt norm $\|M\|_{HS} = (\text{Tr } M^* M)^{1/2}$:

$$\|S(q, r, t) - S(q', r', t')\|_{HS} \leq \sqrt{2} \left(|q - q'| + (|r - r'|^2 + |t - t'|^2)^{\frac{1}{2}} \right)$$

and we get

$$\|U_{CC}(\mathbf{S}) - U_{CC}(\mathbf{S}')\| \leq c \left(\sup_{\mu \in \mathbb{Z} \times 2\mathbb{Z}} |q_\mu - q'_\mu| + (|r_\mu - r'_\mu|^2 + |t_\mu - t'_\mu|^2)^{\frac{1}{2}} \right)$$

□

Remark that $\mathbb{S}^1 \times \mathbb{S}^3$ is path-connected so any two Chalker-Coddington models can be continuously deformed into one another in the natural topology.

2.1 Interface between left and right phases

We now consider the situation where the scattering matrices (1) describe a left moving phase and a right moving phase separated by a vertical interface $I_{n_L, n_R} \subset \ell^2(\mathbb{Z}^2)$ which turns out to be invariant:

Lemma 2.4. *Let \mathbf{S} in (1) be such that for $n_L \leq n_R$*

$$S_{j, 2k} \text{ is } \begin{cases} \text{off-diagonal} & \Leftrightarrow r_{j, 2k} = 0 \text{ if } j < n_L \\ \text{diagonal} & \Leftrightarrow t_{j, 2k} = 0 \text{ if } j \geq n_R \end{cases} \quad (4)$$

Denote \mathbf{n}_L the largest even integer less or equal to n_L and \mathbf{n}_R the smallest even integer greater or equal to n_R . then

$$I_{n_L, n_R} := \ell^2(\{\mathbf{n}_L, \mathbf{n}_R\} \times \mathbb{Z}; \mathbb{C}) \quad (5)$$

is invariant under $U_{CC}(\mathbf{S})$. Define

$$U_{I_{n_L, n_R}} \text{ the restriction of } U_{CC} \text{ to } I_{n_L, n_R}.$$

The chiral boundary condition reads for any $k \in \mathbb{Z}$

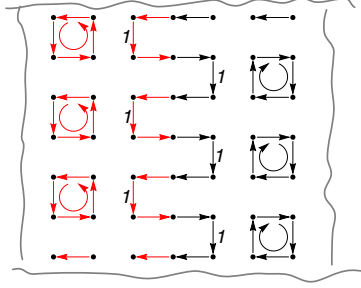
$$\begin{aligned} U_{I_{n_L, n_R}} |\mathbf{n}_L, 2k + 1\rangle &= p |\mathbf{n}_L, 2k\rangle \\ U_{I_{n_L, n_R}} |\mathbf{n}_R, 2k\rangle &= p |\mathbf{n}_L, 2k - 1\rangle. \end{aligned} \quad (6)$$

where $p \in \mathbb{S}^1$ is a site dependent phase factor. In addition it holds for n_L odd:

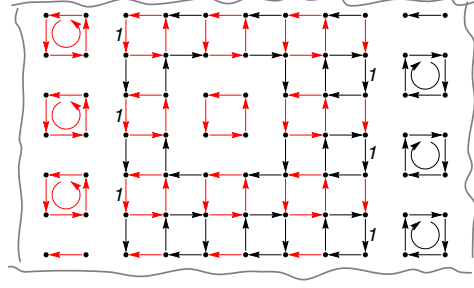
$$U_{I_{n_L, n_R}} |\mathbf{n}_L, 2k\rangle = p |\mathbf{n}_L + 1, 2k\rangle \text{ and } U_{I_{n_L, n_R}} |\mathbf{n}_L + 1, 2k + 1\rangle = p |\mathbf{n}_L, 2k + 1\rangle,$$

and for n_R odd:

$$U_{I_{n_L, n_R}} |\mathbf{n}_R, 2k + 1\rangle = p |\mathbf{n}_R - 1, 2k + 1\rangle \text{ and } U_{I_{n_L, n_R}} |\mathbf{n}_R - 1, 2k\rangle = p |\mathbf{n}_R, 2k\rangle.$$



(a) A snake path



(b) An invariant plaquette

Proof. By Lemma 2.2 we have that if $n_L = 2p_L + 1$ then the rightmost invariant plaquettes on the left are $\mathbb{H}_{\odot}^{p_L-1,k}$, if $n_L = 2p_L$: $\mathbb{H}_{\odot}^{p_L-1,k}$; for $n_R = 2p_R$ the leftmost invariant plaquettes on the right are $\mathbb{H}_{\odot}^{p_R+1,k}$, for $n_R = 2p_R - 1$: $\mathbb{H}_{\odot}^{p_R+1,k}$ \square

Remarks 2.5. *There is no general restriction to the dynamical behavior of $U_{I_{n_L, n_R}}$. We give some exemples:*

1. *A sharp interface $\ell^2(\{0\} \times \mathbb{Z}; \mathbb{C})$ occurs for $n_L = n_R = 0$, and the dynamics are*

$$\begin{aligned} U_{I_{0,0}}|0, 2k+1\rangle &= q_{-1,2k} \overline{t_{0,2k}} |0, 2k\rangle \\ U_{I_{0,0}}|0, 2k\rangle &= q_{0,2k} r_{0,2k} |0, 2k-1\rangle, \quad \forall k \in \mathbb{Z}. \end{aligned}$$

Since all coefficients at the right hand side have modulus one, we deduce that $U_{I_{0,0}}$ is unitarily equivalent to the shift on $l^2(\mathbb{Z})$ describing a current along the interface.

2. *In the case where the strip $\ell^2(\{0, 1, 2\} \times \mathbb{Z}; \mathbb{C})$ occurs as $I_{1,1}$ the restriction of $U_{I_{1,1}}$ to the interface is also unitarily equivalent to the shift on $l^2(\mathbb{Z})$, with a winding snakelike motion, see figure 4a.*
3. *Models containing invariant plaquettes in the interface are readily constructed, see figure 4b*

3 Index and spectrum

In the following we will use the notations $\sigma_x(A)$, $x \in \{pp, cont, ess, ac, sc\}$ to denote the pure point, continuous, essential, absolutely continuous, singular continuous parts of the spectrum a normal operator A .

From a viewpoint of second quantisation we shall prove that the chiral boundary condition forces one particle per time step to flow out of a half strip and deduce that

the continuous spectrum is not empty. We shall do so in two different ways: first we use a topological argument, second we provide an explicit spectral analysis of the relevant flux operator.

In I_{n_L, n_R} we consider the projection Q on the upper half strip defined as multiplication by $\chi([1, \infty))$, the characteristic function of the upper half strip, i.e.:

$$Q\psi(j, k) := \chi(k \geq 1)\psi(j, k).$$

Consider the flux observable

$$\Phi := U_I^* Q U_I - Q.$$

Φ measures the difference of the number of particles in the half strip at time one and time zero. We shall prove that one particle per time step is lost from a full half strip, i.e.:

Theorem 3.1. *Let $U_{CC} = U(\mathbf{S})$ be such that*

$$r_{j,2k} = 0 \text{ if } j < n_L, \quad t_{j,2k} = 0 \text{ if } j \geq n_R$$

then it holds

$$\text{Tr}(\Phi) = -1.$$

We deduce

Corollary 3.2.

$$\sigma_{\text{cont}}(U_{CC}) = \sigma_{\text{cont}}(U_{I_{n_L, n_R}}) \neq \emptyset.$$

To prove this result we make use of the topological invariance of $\text{Tr} \Phi$, due to the fact that it is equal to the relative index of two projections, and the spectral flow formula of Kitaev which is very handy for network models. To be self-contained and to provide some background on our line of thought, we collect several concepts and results from [5, 6, 15].

Definition 3.3. *Let P, Q be selfadjoint projections such that $P - Q$ is compact. Their relative index is defined by*

$$\text{index}(P, Q) := \dim \ker(P - Q - 1) - \dim \ker(P - Q + 1).$$

The index has the following properties

Theorem 3.4. 1. $\text{index}(P, Q) = \dim \text{Ran } P \cap \ker Q - \dim \text{Ran } Q \cap \ker P$

2. *If $(P - Q)^{2n+1}$ is trace class for some $n \in \mathbb{N}_0$ then*

$$\text{index}(P, Q) = \text{Tr}(P - Q)^{2n+1}.$$

3. If $P = U^*QU$ for a unitary U then QUQ is Fredholm on $\text{Ran } Q$ and for its Fredholm index it holds

$$\text{index}(U^*QU, Q) = -\text{ind}(QUQ) := \dim \ker QU^*Q - \dim \ker QUQ.$$

4. If $U^*QU - Q$ is compact then $U^{*n}QU^n - Q$ is compact for all $n \in \mathbb{N}$ and

$$\text{index}(U^{*n}QU^n, Q) = n \text{index}(U^*QU, Q).$$

5. If $P(t) = U^*(t)QU(t)$ with $[0, 1] \mapsto U(t)$ is a norm-continuous family of unitary operators then

$$\text{index}(P(t), Q) = \text{index}(P(0), Q) \quad \forall t$$

- 6.

$$\text{index}(U_1^*QU_1, Q) = \text{index}(U_0^*QU_0, Q)$$

for unitaries U_1, U_0 such that $U_1 - U_0$ is a compact operator.

Proof. The first four assertions were proven in [5, 6]. The last two assertions follow the invariance properties of the Fredholm index of QUQ . \square

Theorem 3.5. In the Hilbert space $\ell^2(\mathbb{Z}; \mathbb{C}^d)$ consider a unitary operator U with the $d \times d$ matrix valued kernel $U(x, y)$

$$U\psi(x) = \sum_{y \in \mathbb{Z}} U(x, y)\psi(y)$$

such that for an $\alpha > 1$, a positive constant c and all $x \neq y$

$$\|U(x, y)\|_{HS} \leq \frac{c}{|x - y|^\alpha}. \quad (7)$$

It holds with the half space projection $Q\psi(x) := \chi(x \geq 1)\psi(x)$

1. $U^*QU - Q$ is trace class and

$$\text{index}(U^*QU, Q) = \text{Tr}(U^*QU - Q) = \sum_{z \geq 1} \sum_{y < 1} (\|U(z, y)\|_{HS}^2 - \|U(y, z)\|_{HS}^2) \quad (8)$$

2. If $U(x, y) = M(x - y)$ and (7) is assumed for $\alpha > 2$ then the Fourier transform $\widehat{M}(k) := \sum_{z \in \mathbb{Z}} M(z)e^{ikz}$ is a periodic matrix valued C^1 function and it holds

$$\text{index}(U^*QU, Q) = -\text{ind}(QUQ) = \text{wind}(\det \widehat{M}) = \frac{1}{2\pi i} \int_0^{2\pi} \text{Tr} \widehat{M}^* \partial_k \widehat{M}(k) dk$$

the winding number of the determinant of \widehat{M} .

We provide the proof; its essential points were proposed in [15]:

Proof. 1.

For $U^*QU - Q = U^*(QU - UQ)$ it holds

$$\begin{aligned} (U^*QU - Q)(x, y) &= \sum_z U(z, x)^* U(z, y) (\chi(z > 0) - \chi(y > 0)) \\ &= \sum_z U(z, x)^* U(z, y) (\chi(z > 0)\chi(y \leq 0) - \chi(z \leq 0)\chi(y > 0)). \end{aligned}$$

The sum over the absolute value of the diagonal elements is estimated by

$$\begin{aligned} &\sum_{y, z} \text{Tr} U(z, y)^* U(z, y) |\chi(z > 0)\chi(y \leq 0) - \chi(z \leq 0)\chi(y > 0)| \\ &\leq c \sum_{y, z} \frac{1}{|y - z|^{2\alpha}} \chi(z > 0)\chi(y \leq 0) < \infty. \end{aligned}$$

It follows that $U^*QU - Q$ is trace class with trace

$$\text{Tr} U^*QU - Q = \sum_{y \leq 0} \sum_{z > 0} (\|U(z, y)\|_{HS}^2 - \|U(y, z)\|_{HS}^2)$$

By theorem 3.4 $\text{index}(U^*QU, Q) = \text{Tr}(U^*QU - Q)$ and (8) follows.

2. The first equality is 1. together with Theorem 3.4.3. As for the second equality observe

$$\begin{aligned} \text{wind}(\det \widehat{M}) &= \frac{1}{2\pi i} \int_0^{2\pi} \text{Tr} \widehat{M}^* \partial_k \widehat{M}(k) dk = \sum_{z \in \mathbb{Z}} z \text{Tr} M(z)^* M(z) \\ &= \sum_{z > 0} (z \text{Tr} M(z)^* M(z) - z \text{Tr} M(-z)^* M(-z)) = \text{Tr} U^*QU - Q. \end{aligned}$$

□

Remarks 3.6. 1. The proof of theorem 3.5.2 provides (via Theorem 3.4.3) a very explicit proof of the index theorem for Toeplitz matrix operators, i.e.:

$$\text{index}(\widehat{Q}\widehat{M}\widehat{Q}) = -\text{wind}(\det \widehat{M})$$

for the Fredholm index of the the operator of multiplication by \widehat{M} on the Hardy space $\{f \in L^2(\mathbb{S}^1; \mathbb{C}^d); \check{f}(n) = 0, \forall n \leq 0\}$. See, for exemple, [4] for a topological proof. The explicit proof is well known in the scalar case, see [8].

2. The index is independent of the cut position, i.e.: for all $y_0 \in \mathbb{Z}$

$$\text{index}(U^* \chi([y_0, \infty)) U, \chi([y_0, \infty))) = \text{index}(U^* \chi([1, \infty)) U, \chi([1, \infty))).$$

Proof. $D := \chi([y_0, \infty)) - \chi([1, \infty))$ is a finite rank projector so $\text{Tr}(U^*DU - D) = \text{Tr}U^*DU - \text{Tr}D = 0$ \square

After recalling the above background material we state the proof

Proof. (of **Theorem 3.1**) To prove the theorem we use the stability of the index, Theorem 3.4.6. Let \mathbf{S} be the $U(2)$ valued map defining U_{CC} . Let U' be the unitary defined by \mathbf{S}' with $S'_{j,0} := \begin{pmatrix} 1 & 0 \\ 0 & 1 \end{pmatrix}$ for all odd j between the strip boundaries, $S_{j,2k} = S'_{j,2k}$ elsewhere, see figure (5). The index corresponding to U' is unchanged because the modification to $U'_I - U_I$ is of finite rank. In Kitaev's formula (8) the only non trivial matrix element left is the one of $U'_I(0, 1)$ on the left boundary of the strip whose modulus equals 1, thus

$$\text{index}(U_I^*QU_I, Q) = \langle \mathbf{n}_L, 1 | U_I^*QU_I - Q | \mathbf{n}_L, 1 \rangle = -1.$$

\square

Corollary 3.2 now follows from the following sufficient condition for delocalisation:

Proposition 3.7. *Let U be a unitary operator on $\ell^2(\mathbb{Z}; \mathbb{C}^d)$ such that for a $\alpha > 1, c > 0$*

$$U\psi(x) = \sum_{y \in \mathbb{Z}} U(x, y)\psi(y) \text{ with } \|U(x, y)\|_{HS} \leq \frac{c}{|x - y|^\alpha} \quad \forall x \neq y$$

then

$$\text{Tr}(U^*\chi([1, \infty))U - \chi([1, \infty))) \neq 0 \implies \sigma_{cont}(U) \neq \emptyset.$$

Proof. Denote P_{pp}, P_{cont} the projections on the pure point and continuous subspace of U . For any eigenvector φ of U , we have $\langle \varphi, (U^*QU - Q)\varphi \rangle = 0$, so that

$$\text{Tr}(P_{pp}\Phi P_{pp}) = 0.$$

Hence, by cyclicity of the trace and $P_{cont}P_{pp} = 0$,

$$\text{Tr}(\Phi) = \text{Tr}((P_{pp} + P_{cont})\Phi((P_{pp} + P_{cont}))) = \text{Tr}(P_{cont}\Phi P_{cont}) \neq 0.$$

\square

The propagation induced by the chiral boundary condition being non-trivial, it is instructive to study the spectrum of the flux observable Φ .

By remark 3.6.2 the flux through the horizontal interface is actually independent of the cut position. Consider the flux observable through the cut at height $c \in \mathbb{Z}$ i.e.:

$$\Phi_c := U_I^*\chi([c, \infty))U_I - \chi([c, \infty)) \text{ on } I_{n_L, n_R}.$$

An explicit computation yields the following

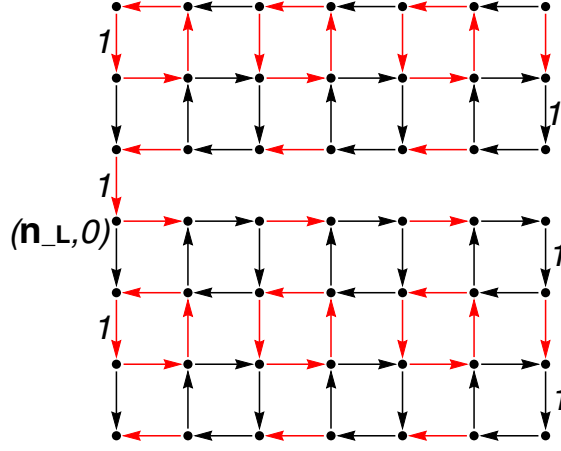


Figure 5: A finite rank perturbation of U_I

Lemma 3.8. *The finite rank self-adjoint operator Φ_c takes the following forms, depending on the parameters.*

If $n_L = 2p_L$, $n_R = 2p_R$, and c is even,

$$\Phi_c = -|2p_R, c\rangle\langle 2p_R, c| + \sum_{p_L \leq j < p_R} \begin{pmatrix} -|r_{2j,c}|^2 & -\overline{r_{2j,c}t_{2j,c}} \\ -r_{2j,c}t_{2j,c} & |r_{2j,c}|^2 \end{pmatrix},$$

where the matrices are expressed in the ordered basis $\{|2j, c\rangle, |2j+1, c-1\rangle\}$.

If c is odd,

$$\Phi_c = -|2p_L, c\rangle\langle 2p_L, c| + \sum_{p_L < j \leq p_R} \begin{pmatrix} |t_{2j-1,c-1}|^2 & -r_{2j-1,c-1}t_{2j-1,c-1} \\ -r_{2j-1,c-1}t_{2j-1,c-1} & -|t_{2j-1,c-1}|^2 \end{pmatrix},$$

where the matrices are expressed in the ordered basis $\{|2j-1, c-1\rangle, |2j, c\rangle\}$.

In case $n_L = 2p_L + 1$ and/or $n_R = 2p_R - 1$, the formulae above hold true with $S_{2p_L, 2k}$ off-diagonal and/or $S_{2p_R-1, 2k}$ diagonal, for all $k \in \mathbb{Z}$.

As a consequence, we get

Theorem 3.9. *With the notations above,*

$$\sigma(\Phi_c) = \begin{cases} \{-1\} \cup_{p_L \leq j < p_R} \{+|r_{2j,c}|, -|r_{2j,c}|\}, & c \text{ even} \\ \{-1\} \cup_{p_L < j \leq p_R} \{+|t_{2j-1,c-1}|, -|t_{2j-1,c-1}|\}, & c \text{ odd,} \end{cases}$$

and

$$\text{Tr}(\Phi_c) = -1, \quad \forall c \in \mathbb{Z}.$$

Remark 3.10. One sees that if $\lim_{j \rightarrow \infty} t_{j,c} = 0$ sufficiently fast for some c odd and $n_R \rightarrow \infty$, then Φ_c is trace class and $\sigma_{\text{cont}}(U_{CC}) \neq \emptyset$. A similar statement holds for c even.

3.1 The shift and the absolutely continuous spectrum

To go beyond Corollary 3.2, we exploit the stability of the Fredholm index $\text{Tr}(\Phi_c)$ and that of the absolutely continuous spectrum under finite rank perturbations. The idea is to unravel the existence of a shift within U_I , modulo finite rank perturbations.

Theorem 3.11. Let $U_{CC} = U(\mathbf{S})$ be such that

$$r_{j,2k} = 0 \text{ if } j < n_L, \quad t_{j,2k} = 0 \text{ if } j \geq n_R$$

There exists a decomposition of I_{n_L, n_R} into orthogonal closed subspaces $\mathcal{H}_u \oplus \mathcal{H}_s$ such that $U_I = V \oplus S + F$, where V is unitary, S is a bilateral shift, and F is a finite rank operator.

Consequently,

$$\sigma_{ac}(U_{CC}) = \mathbb{S}^1.$$

Remark 3.12. The point spectrum of U_{CC} contains all eigenvalues of the restrictions to individual plaquettes in the left and right moving phases, as described in Lemma 2.2. Other finite dimensional invariant subspaces may also occur, and contribute to the point spectrum and singular continuous spectrum may be present as well.

Proof. Consider the projection on the upper half plane and its complement

$$Q = \chi([1, \infty)), \quad Q^\perp = \mathbb{I} - Q.$$

Let $U = U(\mathbf{S})$ and U' the same modification of U as in theorem 3.1, see figure (5), i.e.: $U' = U(\mathbf{S}')$ with $S'_{j,0} := \begin{pmatrix} 1 & 0 \\ 0 & 1 \end{pmatrix}$ for all odd j between the strip boundaries, $S'_{j,2k} = S'_{j,2k}$ elsewhere. Then U' is unitary and $U'_I - U_I =: F$ is a finite rank operator so $\sigma_{ac}(U) = \sigma_{ac}(U')$. It holds for a phase $p \in \mathbb{S}^1$:

$$Q^\perp U'_I Q = p |\mathbf{n}_L, 0\rangle \langle \mathbf{n}_L, 1|, \quad Q U'_I Q^\perp = 0.$$

Consequently

$$\mathcal{L} := \text{span} \{ |\mathbf{n}_L, 1\rangle \}$$

is a wandering subspace in the sense of [18], i.e.:

$$U_I^n \mathcal{L} \perp \mathcal{L} \quad \forall n \geq 1.$$

By unitarity it follows

$$U_I^n \mathcal{L} \perp \mathcal{L} \quad \forall n \in \mathbb{Z} \setminus 0$$

and that

$$\mathcal{H}_s := \bigoplus_{n \in \mathbb{Z}} U_I^n \mathcal{L}$$

reduces U_I' which on \mathcal{H}_s is a bilateral shift; c.f.: [18], ch.2. So $\sigma(S) = \sigma_{ac}(S) = \mathbb{S}^1$. \square

Remark 3.13. *The idea to consider a wandering subspace was used by von Neumann in his discussion of symmetric operators with non equal defect indices [19]; the idea to use this to get information on the absolutely continuous spectrum is inspired by [9].*

4 Translation Invariant Case

We can refine the spectral analysis of the CC model provided it possesses more symmetries. We assume in this section that the CC model is invariant under vertical translations. In other words, the scattering matrices, see (1), are identical on all scattering centers with equal horizontal components:

$$S_{j,2k} = S_j, \quad \text{for all } (j, k) \in \mathbb{Z}^2. \quad (9)$$

Firstly, for the case of the interface between different chiral phases, we shall show in addition that $\sigma_{sc}(U_I) = \emptyset$ and provide an independent proof that $\sigma_{ac}(U_I) = \mathbb{S}^1$. Secondly we characterise all vertically translation invariant Chalker Coddington models on \mathbb{Z}^2 explicitly as one dimensional Quantum Walks.

4.1 Translation invariant interface

In this section we assume translation invariance, equation (9), and different chiral phases, equation (4).

The periodicity of \mathbf{S} implies a period-2 periodicity of U_I . To exploit this we regroup two horizontal slices in a vector and use Fourier transform; define for $\psi \in I_{n_L, n_R}$

$$\boldsymbol{\psi}(k)_j := (\psi(j, (2k-1)), \psi(j, 2k));$$

for $d := n_R - n_L + 1$ the corresponding map

$$I_{n_L, n_R} \rightarrow \ell^2(\mathbb{Z}; \mathbb{C}^d) \otimes \mathbb{C}^2 \quad (10)$$

is unitary and we denote by U_I the operator on $\ell^2(\mathbb{Z}; \mathbb{C}^d) \otimes \mathbb{C}^2$ corresponding to U_I . By periodicity of \mathbf{S} we have

$$U_I \boldsymbol{\psi}(k) = \sum_{k' \in \mathbb{Z}} V(k-k') \boldsymbol{\psi}(k') \quad (11)$$

where the kernel $k \mapsto V(k) \in \mathcal{B}(\mathbb{C}^d \otimes \mathbb{C}^2)$ has compact support. In particular its Fourier transform

$$y \mapsto \widehat{V}(y) := \sum_{k \in \mathbb{Z}} e^{-iyk} V(k) \quad (12)$$

is a trigonometric polynomial.

Remark that in the following we shall not distinguish between \mathbb{S}^1 , the coordinates $[0, 2\pi) \ni y \mapsto e^{-iy} \in \mathbb{S}^1$ or $\mathbb{R}/2\pi\mathbb{Z}$. For its winding number of $\det \widehat{V}$ it holds

Proposition 4.1. *For \widehat{V} defined in (11), (12) it holds*

$$\text{wind}(\det \widehat{V}) = -1.$$

Proof. With $\chi([1, \infty)) := \chi([1, \infty)) \otimes \mathbb{I}$ it holds by Theorem 3.5

$$\text{wind}(\det \widehat{V}) = \text{Tr}(\mathbf{U}_I^* \chi([1, \infty)) \mathbf{U}_I - \chi([1, \infty)))$$

On the other hand by unitary equivalence and Theorem 3.1 we have

$$\text{Tr}(\mathbf{U}_I^* \chi([1, \infty)) \mathbf{U}_I - \chi([1, \infty))) = \text{Tr}(\mathbf{U}_I^* \chi([1, \infty)) \mathbf{U}_I - \chi([1, \infty))) = -1.$$

□

A non trivial winding of the determinant of a continuous matrix-valued multiplication operator implies that its spectrum is the whole circle. If it is analytic the absolutely continuous spectrum is the whole circle and the singular continuous spectrum is empty. We did not find a proof in the literature so we provide one. The result is non trivial because eigenvalues of periodic unitaries need not be periodic as the example $\begin{pmatrix} 0 & 1 \\ e^{iy} & 0 \end{pmatrix}$ shows.

Lemma 4.2. *For $d \in \mathbb{N}$ consider $V \in C^0(\mathbb{S}^1; U(d))$, a continuous unitary matrix-valued function such that*

$$\text{wind}(\det V) \neq 0.$$

Then it holds

1. *For all $\lambda \in \mathbb{S}^1$ there exists a $z \in \mathbb{S}^1$ such that $\lambda \in \sigma(V(z))$;*
2. *for V the operator of multiplication by $V(z)$ on $\ell^2(\mathbb{S}^1; \mathbb{C}^d)$:*

$$\sigma(V) = \mathbb{S}^1.$$

Proof. 1. Consider the continuous function

$$\delta : [0, \infty) \times \mathbb{S}^1 \rightarrow \mathbb{C} \quad \delta_r(z) := \det(rV(z) - \mathbb{I})$$

For $r \neq 1$ one has $\ker(rV(z) - \mathbb{I}) = \{0\}$ so in this case $\text{wind}(\delta_r)$ is well defined continuous and integer valued. Now it holds

$$\text{wind}(\delta_r) = \text{wind}(\delta_0) = \text{wind}(\det(-\mathbb{I})) = 0 \quad \forall 0 \leq r < 1.$$

For $r > 1$,

$$\begin{aligned} \text{wind}(\delta_r) &= \\ \text{wind}(\det r\mathbb{I}) + \text{wind}(\det V) + \text{wind}\left(\det\left(\mathbb{I} - \frac{1}{r}V^*\right)\right) &= \text{wind}(\det V) \neq 0. \end{aligned}$$

This implies that $z \mapsto \det(V(z) - \mathbb{I})$ has a zero, thus $1 \in \sigma(V(z_1))$ for a suitable z_1 . For $\lambda \in \mathbb{S}^1$ replace $V(z)$ by $\bar{\lambda}V(z)$ and conclude that $\lambda \in \sigma(V(z_\lambda))$.

2. $\sigma(V(z))$ depends continuously on z thus for $\lambda \in \mathbb{S}^1$ the Lebesgue measure $\mu_L(\sigma(U(\cdot)) \cap (\lambda - \varepsilon, \lambda + \varepsilon)) \neq 0 \quad \forall \varepsilon > 0$ thus $\lambda \in \sigma(U)$. \square

It follows

Theorem 4.3. *Under the assumption in equations (9) and (4) it holds*

$$\sigma_{sc}(U_{CC}) = \emptyset \text{ and } \sigma_{ac}(U_{CC}) = \mathbb{S}^1.$$

Proof. It is sufficient to show the assertions for U_I as the spectrum outside the strip I is explicit.

By unitary equivalence the spectrum is the same as the one of the multiplication operator by \hat{V} on $L^2(\mathbb{S}^1; \mathbb{C}^d)$. The Fourier transform \hat{V} is a trigonometric polynomial thus analytic; so its eigenvalues can be chosen to be analytic [14]. Thus the spectrum of the fibered operator consists of the ranges of a finite set of eigenvalues made of absolutely continuous spectrum, see [17], Theorem XIII.86, which by Lemma 4.2, is the whole circle. \square

4.2 General translation invariant model and reduction to a family of one dimensional Quantum Walks

Using a more carefully chosen partial Fourier transformation we now show that a vertically translation invariant Chalker Coddington model can be represented as a direct integral of a family of one dimensional Quantum Walks.

Proposition 4.4. Consider a Chalker Coddington Model $U_{CC} = U_{CC}(\mathbf{S})$, assume periodicity for \mathbf{S} as in equation (9). On $\ell^2(\mathbb{Z}) \otimes \mathbb{C}^2$ define the unitary Quantum Walk

$$U_{QW}(y) := \mathcal{S}C(y)$$

where with $|+\rangle = (1, 0), |-\rangle = (0, 1)$,

$$\mathcal{S}|j\rangle \otimes |+\rangle := |j+1\rangle \otimes |+\rangle, \quad \mathcal{S}|j\rangle \otimes |-\rangle := |j-1\rangle \otimes |-\rangle,$$

$$C(y)|j\rangle \otimes v := |j\rangle \otimes C_j(y)v \quad \forall v \in \mathbb{C}^2$$

$$C_{2j}(y) := q_{2j} \begin{pmatrix} -t_{2j} & \overline{r_{2j}}e^{iy} \\ r_{2j}e^{-iy} & \overline{t_{2j}} \end{pmatrix}, \quad C_{2j+1}(y) := q_{2j+1} \begin{pmatrix} r_{2j+1} & \overline{t_{2j+1}} \\ -t_{2j+1} & \overline{r_{2j+1}} \end{pmatrix}.$$

Then U_{CC} is unitarily equivalent to the fibered operator

$$\int_{\mathbb{S}^1}^{\oplus} U_{QW}(y) \frac{dy}{2\pi} \quad \text{on } L^2(\mathbb{S}^1; \ell^2(\mathbb{Z}) \otimes \mathbb{C}^2).$$

Proof. Define the unitary

$$\mathcal{F} : \ell^2(\mathbb{Z}^2; \mathbb{C}) \rightarrow L^2(\mathbb{S}^1) \otimes \ell^2(\mathbb{Z}; \mathbb{C}) \otimes \mathbb{C}^2$$

by

$$\mathcal{F}|j, 2k\rangle := e^{iky} \otimes |j\rangle \otimes |+\rangle = e^{iky} \otimes |j, +\rangle, \quad \mathcal{F}|j, 2k+1\rangle := e^{iky} \otimes |j-1\rangle \otimes |-\rangle = e^{iky} \otimes |j-1, -\rangle.$$

By the definition of $U_{CC}(\mathbf{S})$, equations (2) we have

$$\begin{pmatrix} \mathcal{F}U_{CC}\mathcal{F}^{-1}e^{iky} \otimes |2j, +\rangle \\ \mathcal{F}U_{CC}\mathcal{F}^{-1}e^{-iy}e^{iky} \otimes |2j, -\rangle \end{pmatrix} = S_{2j} \begin{pmatrix} e^{-iy}e^{iky} \otimes |2j-1, -\rangle \\ e^{iky} \otimes |2j+1, +\rangle \end{pmatrix},$$

$$\begin{pmatrix} \mathcal{F}U_{CC}\mathcal{F}^{-1}e^{iky} \otimes |2j+1, +\rangle \\ \mathcal{F}U_{CC}\mathcal{F}^{-1}e^{iky} \otimes |2j+1, -\rangle \end{pmatrix} = S_{2j+1} \begin{pmatrix} e^{iky} \otimes |2j+2, +\rangle \\ e^{iky} \otimes |2j, -\rangle \end{pmatrix}.$$

So $C_{2j+1} = S_{2j+1}^T$ and $C_{2j} = \begin{pmatrix} 0 & 1 \\ e^{-iy} & 0 \end{pmatrix} S_{2j}^T \begin{pmatrix} 1 & 0 \\ 0 & e^{iy} \end{pmatrix}$ which gives the result. \square

Proposition 4.5. Consider a Chalker Coddington Model $U_{CC} = U_{CC}(\mathbf{S})$, assume periodicity for \mathbf{S} as in equation (9). For $y \in [0, 2\pi)$ consider the unitary operator defined on $\ell^2(\mathbb{Z})$ by the matrix $M_{QW}(y) :=$

$$\begin{array}{c}
4j \downarrow \\
\begin{array}{ccccccc}
\cdots & 0 & & & & & \\
& 0 & e^{-iy}r_{2j}q_{2j} & \overline{t_{2j}q_{2j}} & & & \\
4j \rightarrow & \overline{t_{2j-1}q_{2j-1}} & 0 & 0 & & & \\
& & 0 & 0 & -t_{2j+1}q_{2j+1} & \overline{r_{2j+1}q_{2j+1}} & \\
& & -t_{2j}q_{2j} & e^{iy}\overline{r_{2j}q_{2j}} & 0 & 0 & \\
& & & & 0 & 0 & e^{-iy}r_{2j+2}q_{2j+2} \\
& & & & r_{2j+1}q_{2j+1} & \overline{t_{2j+1}q_{2j+1}} & 0 \\
& & & & & & 0 & \cdots
\end{array}
\end{array}
\quad (13)$$

Then U_{CC} is unitarily equivalent to

$$\int_{\mathbb{S}^1}^{\oplus} M_{QW}(y) \frac{dy}{2\pi} \quad \text{on } L^2(\mathbb{S}^1; \ell^2(\mathbb{Z})).$$

Proof. This representation follows in a general way from the representation as Quantum Walk, see [3]. Explicitely, define the unitary

$$\mathcal{G} : \ell^2(\mathbb{Z}^2; \mathbb{C}) \rightarrow L^2(\mathbb{S}^1) \otimes \ell^2(\mathbb{Z}; \mathbb{C})$$

by

$$\mathcal{G} |j, 2k\rangle := e^{iky} \otimes |2j\rangle, \quad \mathcal{G} |j, 2k+1\rangle := e^{iky} \otimes |2j-1\rangle. \quad (14)$$

By the definition of $U_{CC}(\mathbf{S})$, equations (2) we have

$$\begin{aligned}
& \begin{pmatrix} \mathcal{G}U_{CC}\mathcal{G}^{-1}e^{iky} \otimes |4j\rangle \\ \mathcal{G}U_{CC}\mathcal{G}^{-1}e^{-iy}e^{iky} \otimes |4j+1\rangle \end{pmatrix} = S_{2j} \begin{pmatrix} e^{-iy}e^{iky} \otimes |4j-1\rangle \\ e^{iky} \otimes |4j+2\rangle \end{pmatrix}, \\
& \begin{pmatrix} \mathcal{G}U_{CC}\mathcal{G}^{-1}e^{iky} \otimes |4j+2\rangle \\ \mathcal{G}U_{CC}\mathcal{G}^{-1}e^{iky} \otimes |4j+3\rangle \end{pmatrix} = S_{2j+1} \begin{pmatrix} e^{iky} \otimes |4j+4\rangle \\ e^{iky} \otimes |4j+1\rangle \end{pmatrix}
\end{aligned}$$

which gives the result. \square

Remark 4.6. Up to a unitary equivalence by a y independent operator, we can assume the matrix elements of the operator $M_{QW}(y)$ satisfy

$$r_{2j+1} = |r_{2j+1}|, \quad t_{2j} = i|t_{2j}|, \quad \forall j \in \mathbb{Z}.$$

Proof. Apply Lemma 3.2 in [7], which shows that we can choose the phases of those elements of the infinite five-diagonal unitary matrix at hand, modulo explicit unitary equivalence by a diagonal operator. \square

Remark 4.7. Proposition 4.5 allows us to provide a direct proof of the identity $\text{wind}(\det(M_I)) = -1$, where $M_I(y)$ is the Fourier transform representation of the restriction U_I corresponding to (13).

Proof. The Fourier image $M_I(y)$ is a finite unitary matrix of the form (13), taking into account the finite width of the interface (5). Due to the relabelling (14), and with $\mathbf{n}_R = 2p_R$, $\mathbf{n}_L = 2p_L$, the matrix $M_I(y)$ acts on

$$l^2(\{4p_L - 1, 4p_L, \dots, 4p_R - 1, 4p_R\}) \simeq \mathbb{C}^{2(2(p_R - p_L) + 1)},$$

where $S_{2p_L - 1}$ is off-diagonal and S_{2p_R} is diagonal. Hence,

$$\begin{aligned} M_I(y)|4p_L - 1\rangle &= \overline{t_{2p_L - 1}} q_{2p_L - 1} |4p_L\rangle \\ M_I(y)|4p_R\rangle &= e^{-iy} \overline{r_{2p_R}} q_{2p_L} |4p_R - 1\rangle, \end{aligned}$$

and on the remaining $4(p_R - p_L)$ vectors, $M_I(y)$ has the block structure depicted in (13). Lemma 3.2 in [7] again allows us replace t_{2j} by $e^{iy} t_{2j}$ in the matrix elements of $M_I(y)$, up to a unitary transform that depends (analytically) on y . Thus, for our spectral considerations, we can assume without loss that all rows carry the same phase factors, so that

$$M_I(y) = D(y)M_I(0), \text{ where } D(y) = \text{diag}(e^{-iy}, 1, 1, e^{iy}, e^{-iy}, 1 \dots, 1, e^{iy}, e^{-iy}, 1).$$

Due to the excess of phase e^{-iy} , the winding number of the 2π -periodic analytic map $y \mapsto \det(M_I(y)) = e^{-iy} \det(M_I(0))$ equals -1 . \square

References

- [1] Asch, J., Bourget, O., Joye, A., Localization Properties of the Chalker-Coddington Model. *Ann. H. Poincaré*, **11**, 13411373, (2010).
- [2] Asch, J., Bourget, O., Joye, A., Dynamical Localization of the Chalker-Coddington Model far from Transition, *J. Stat. Phys.*, **147**, 194-205 (2012).
- [3] Asch, J., Bourget, O., Joye, A., Spectral Stability of Unitary Network Models, *Rev. Math. Phys.*, **27**, 1530004, (2015).
- [4] Atiyah, M. F., Algebraic topology and operators in Hilbert space. 1969 Lectures in Modern Analysis and Applications. I pp. 101–121 Springer, Berlin
- [5] Avron, J., Seiler, R., Simon, B., The Index of a Pair of Projections, *J. Func. Anal.*, **120**, 220-237, (1994)
- [6] Avron, J.E., Seiler, R., Simon, B., 1994. Charge deficiency, charge transport and comparison of dimensions. *Communications in Mathematical Physics*, 159(2), pp.399– 422.
- [7] Bourget, O., Howland, J., Joye, A. Spectral analysis of unitary band matrices. *Commun. Math. Phys.*, **234**, 191–227, (2003).
- [8] Brezis, H., 2006. New questions related to the topological degree. In *The unity of mathematics*. Progr. Math. Birkhäuser Boston, Boston, MA, pp. 137-154.
- [9] Cedzich, C., Geib, T., Grunbaum, F. A., Stahl, C., Velzquez, L., Werner, A. H., Werner, R. F., The topological classification of one-dimensional symmetric quantum walks. arXiv:1611.04439, (2016)
- [10] Chalker, J. T., Coddington, P. D. Percolation, quantum tunnelling and the integer Hall effect. *J. Phys. C: Solid State Physics*, **21**, 2665, (1988).
- [11] Elbau, P., Graf, G.M., 2002. Equality of bulk and edge Hall conductance revisited. *Communications in Mathematical Physics*, 229(3), pp.415–432.
- [12] Farid Ahamada, "Etude d'un fibré en droites provenant d'un modèle de dynamique quantique", Master thesis, Toulon, (2013)
- [13] Graf, G.M., Porta, M., Bulk-Edge Correspondence for Two-Dimensional Topological Insulators. *Communications in Mathematical Physics* (1965-1997), 324(3), pp.851–895. (2013).

- [14] T. Kato, *Perturbation theory of linear operators*, Springer Verlag, 1976.
- [15] Kitaev, A. Anyons in an exactly solved model and beyond. *Ann. of Phys.*, **321**, 2111, (2006).
- [16] Kramer, B., Ohtsuki, T., Kettmann, S., Random network models and quantum phase transitions in two dimensions, *Physics Reports*, **417**, 211, (2005).
- [17] M. Reed, B. Simon, *Methods of Modern Mathematical Physics*, Vol.1-4, Academic Press, 1975-1979.
- [18] Sz.-Nagy, B., Foias, C., Berkovici, H., Kérchy, J., *Harmonic Analysis of Operators in Hilbert Spaces*, Springer (2010).
- [19] Neumann, von, J., Allgemeine Eigenwerttheorie Hermitescher Funktionaloperatoren. *Mathematische Annalen*, 102(1), pp.49–131, (1930).