



HAL
open science

Land cover and sea visibility in western Liguria. Using GIS to build coastal knowledge

Yuji Kato, Matteo Gismondi, Samuel Robert

► To cite this version:

Yuji Kato, Matteo Gismondi, Samuel Robert. Land cover and sea visibility in western Liguria. Using GIS to build coastal knowledge. ECO-IMAGINE Thematic Conference "Building Coastal Knowledge and GI", Jun 2006, Cork, Ireland. 2006. <hal-01572062>

HAL Id: hal-01572062

<https://hal.science/hal-01572062v1>

Submitted on 4 Aug 2017

HAL is a multi-disciplinary open access archive for the deposit and dissemination of scientific research documents, whether they are published or not. The documents may come from teaching and research institutions in France or abroad, or from public or private research centers.

L'archive ouverte pluridisciplinaire HAL, est destinée au dépôt et à la diffusion de documents scientifiques de niveau recherche, publiés ou non, émanant des établissements d'enseignement et de recherche français ou étrangers, des laboratoires publics ou privés.



HAL Authorization

Land cover and sea visibility in western Liguria Using GIS to build coastal knowledge

Yuji KATO *, Matteo GISMONDI *, Samuel ROBERT **

* Department of Geography, University of Nice - Sophia-Antipolis

** CNRS / University of Nice - Sophia-Antipolis, UMR ESPACE



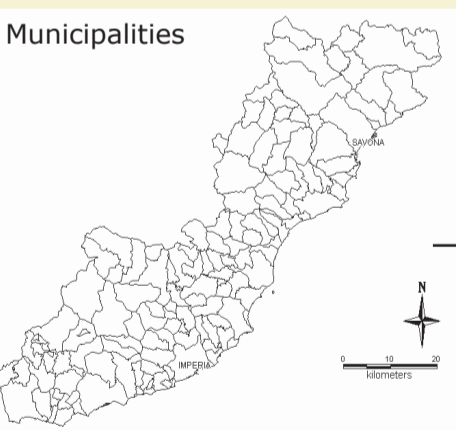
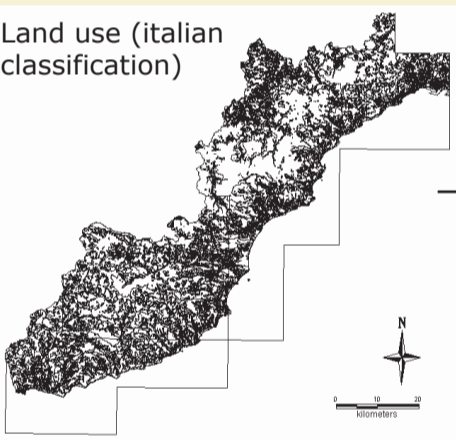
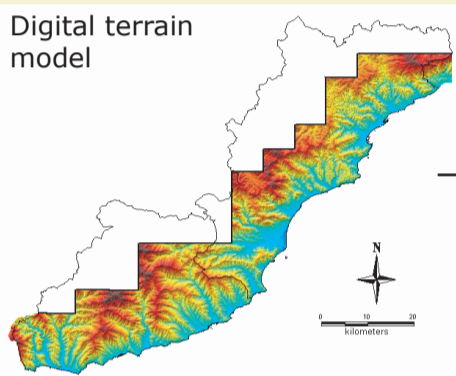
1) Does coastal land use depend on sea visibility?

- A 30-km-wide region between mountains and sea
- Population mainly concentrated near the coast
- A land use which evolved differently in coastal zones than in inland zones
- Landscape requalification : a stake for promoting tourism

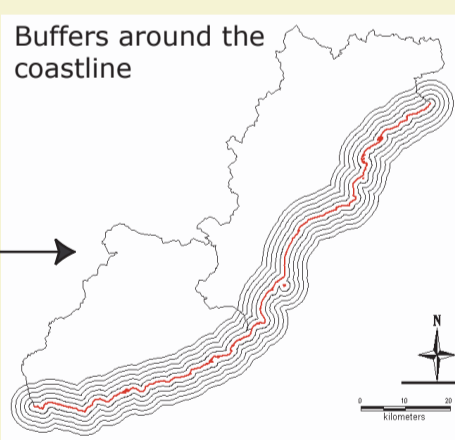
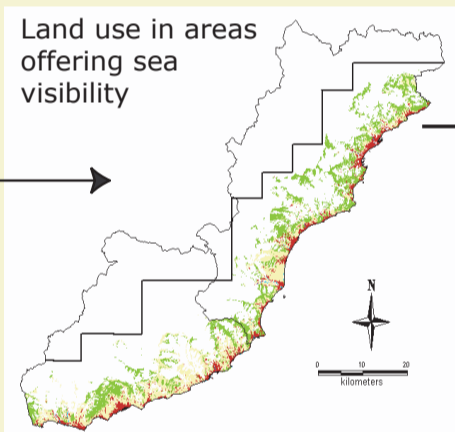
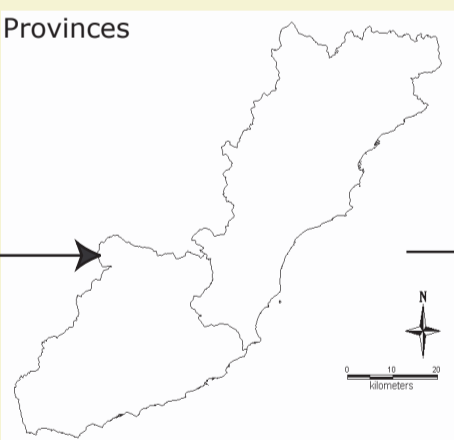
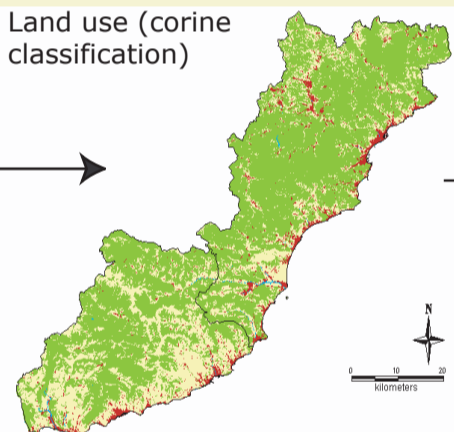
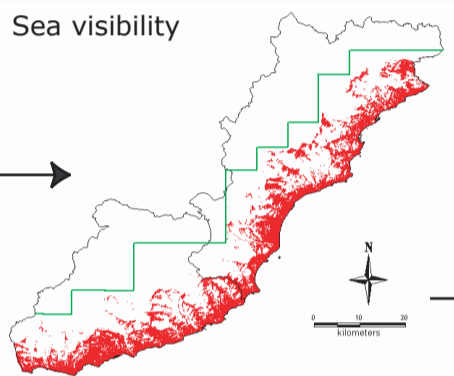


Use of a Geographical Information System in order to measure the impact of sea visibility on coastal land use

Initial database



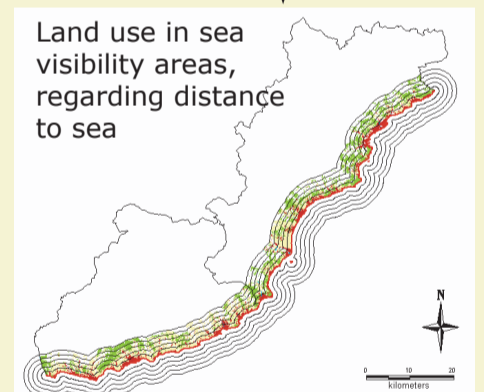
2) Data processing



From the initial database:

- New land use map created using corine land cover classification: allows comparison with other territories in Europe
- Map of land use in sea visibility areas
- Buffer analysis: parameter of distance from sea taken into account

Geotreatments

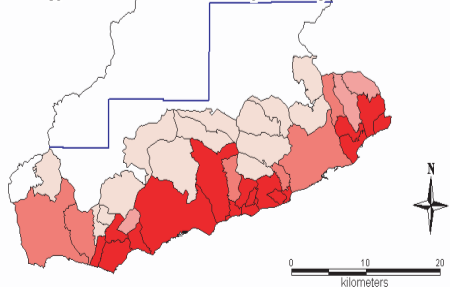


3) Results

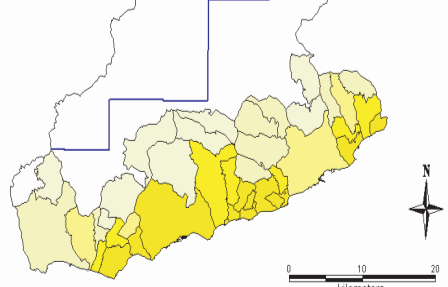
- Artificial and agricultural areas mostly in sea visibility zones in coastal municipalities
- Sea visibility effect on artificial areas shown in the first two kilometers

Cartographical outputs

Share of artificial areas with sea visibility, by municipality (province of Imperia)



Share of agricultural areas with sea visibility, by municipality (province of Imperia)



Statistical outputs

Artificial areas according to distance from sea

