

Continuous Average Straightness in Spatial Graphs

Vincent Labatut

Laboratoire Informatique d'Avignon – LIA UPR 4128

vincent.labatut@univ-avignon.fr

Séminaire de l'équipe Complex Networks – LIP6

12 mai 2023



Outline

- 1 Spatial Graphs & Straightness
- 2 Continuous Average Straightness
- 3 Empirical Assessment
- 4 Conclusion & Perspectives

Spatial Graphs & Straightness

Spatial Graphs

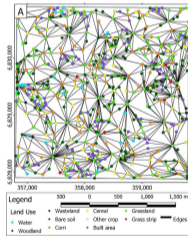
- **Spatial** graphs [Bar11]: vertices have a spatial **position**, edges have a **length**
- Used to model systems in which **spatial constraints** affect the **topology**



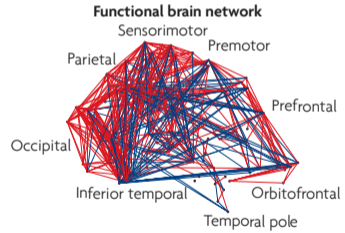
Road network
[Pun+22]



Electrical grid
[Sol+08]



Ecological network
[Bar+22]



Cerebral network
[BS09]

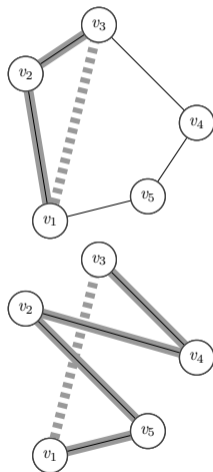
Spatial Graphs & Straightness

Straightness Measure

- Specific topological measures leverage **spatial information** [Bar11]
- **Straightness** [VLD05; PCL06]:

$$S(u, v) = \frac{d_E(u, v)}{d_G(u, v)}$$

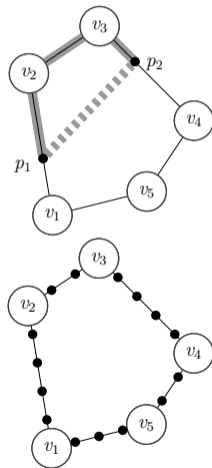
- Characterizes a **pair** of vertices
- **Ratio** of the **Euclidean** (d_E) to the **graph** (d_G) distances between them
 - ≈ 0 : very **tortuous** path
 - 1 : completely **straight** path
- **Interpretation**: how efficient the graph is in providing the **most direct path** from one vertex to the other
- Alternative names (sometimes for the reciprocal): Circuity [OM96], Directness [Hes97], Tortuosity [KT01], Route Factor [GN06], Detour Index [LJB13]...



Spatial Graphs & Straightness

Averaging the Straightness

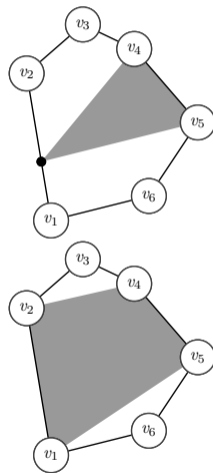
- Generally **averaged** in the literature:
 - **Single vertex** vs. rest of the graph [PCL06]
 - Subgraph: module [KT01], sample [Hes97; LE09]
 - Whole graph [KT01; VLD05; GN06; LJB13]
- Vertex-to-vertex vs. **point-to-point** routes
 - V2v: subway, airways...
 - P2p: soft transport transit
- **Standard** approach: discrete approximation
 - 1 **Segment** edges, adding extra vertices
 - 2 Compute **Straightness** for all vertex pairs
 - 3 **Average** these values



Spatial Graphs & Straightness

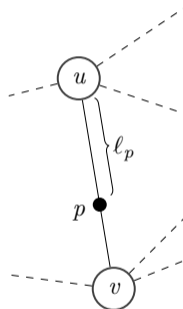
Proposed Approach

- **Issues** with the standard approach:
 - Computational **cost** (both time and memory)
 - **Quality** of the discrete approximation ?
- **Proposed** approach: continuous average
 - **First** integration: between a **point** and an **edge**
 - **Second** integration: between **two edges**
 - **Sum** over all **pairs** of edges

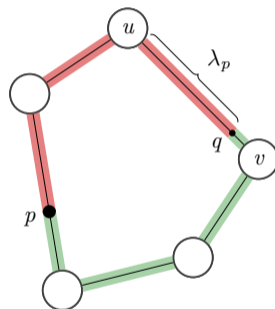


Reformulation of the Measure Notations

- Which **variable** of integration?
 - Relative position ℓ_p
 - = Position of p relative to the first vertex u of its edge (u, v)
 - ≠ By opposition to its absolute position (x_p, y_p)
- Constants:
 - Absolute position of vertices
 - Graph distance between vertices
- How to **reformulate** S as a function of ℓ ?
 - Straightforward for the Euclidean distance
 - More complicated for the graph distance



Relative position

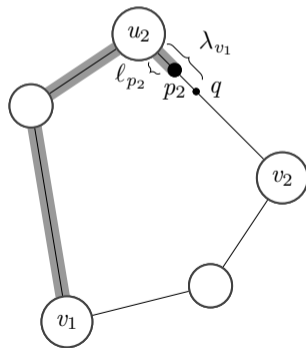
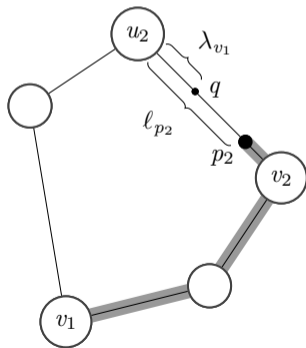


Break-even point and distance

Reformulation of the Measure

Vertex-to-Point Graph Distance

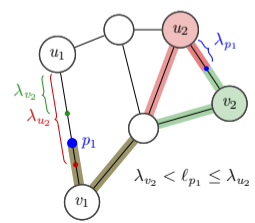
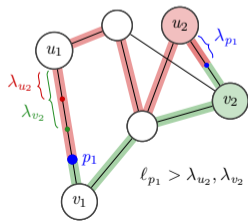
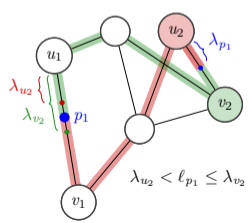
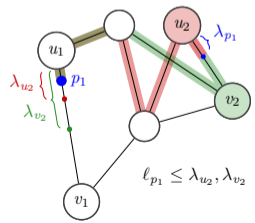
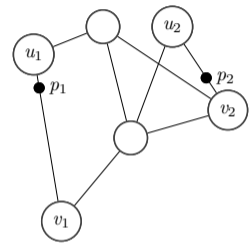
- Graph distance between vertex v_1 and point p_2 :
 - Graph distance between v_1 and u_2 or v_2 + segment length on (u_2, v_2)
- Which path is the **shortest**?
 - Depends on the position of p_2 w.r.t. the **break-even point** q



Reformulation of the Measure

Point-to-Point Graph Distance

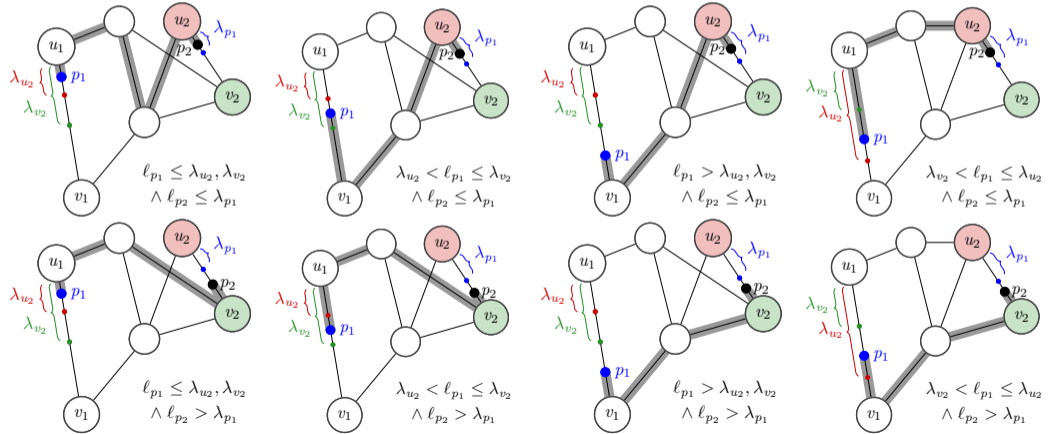
- Starting from a **non-vertex** point p_1
- We first want λ_{p_1} (BEP of p_1):
 - Depends on the position of p_1 relative to λ_{v_2} and λ_{u_2}
 - Must consider **4 situations**



Reformulation of the Measure

Point-to-Point Graph Distance

- Next, leverage λ_{p_1} to characterize the position of p_2
- Total of 8 cases to consider when computing the graph distance



Continuous Average Straightness

Point-Oriented Variants

Straightness expressed as $S(p_1, p_2) = f(\ell_{p_1}, \ell_{p_2})$

Average Straightness between a point and an edge

Let $p_1 \in P$ be a point and $(u_2, v_2) \in E$ an edge. The average Straightness between them is

$$S_{u_2 v_2}(p_1) = \frac{1}{d_E(u_2, v_2)} \int_{(u_2, v_2)} f(\ell_{p_1}, \ell_{p_2}) d\ell_{p_2}. \quad (1)$$

Average Straightness between a point and the graph

Let G be a graph and $p_1 \in P$ one of its points. The average Straightness between them is

$$S_G(p_1) = \frac{1}{\sum_{(u_2, v_2)} d_E(u_2, v_2)} \sum_{(u_2, v_2)} \int_{(u_2, v_2)} f(\ell_{p_1}, \ell_{p_2}) d\ell_{p_2}. \quad (2)$$

Continuous Average Straightness

Edge-Oriented Variants

Average Straightness between two edges

Let (u_1, v_1) and $(u_2, v_2) \in E$ be two edges. The average Straightness between them is

$$S_{u_2 v_2}(u_1, v_1) = \frac{1}{d_E(u_1, v_1) d_E(u_2, v_2)} \int_{(u_1, v_1)} \int_{(u_2, v_2)} f(l_{p_1}, l_{p_2}) dl_{p_1} dl_{p_2}. \quad (3)$$

Average Straightness between an edge and the graph

Let G be a graph and $(u_1, v_1) \in E$ one of its edges. The average Straightness between them is

$$S_G(u_1, v_1) = \frac{1}{\sum_{(u_2, v_2)} d_E(u_1, v_1) d_E(u_2, v_2)} \sum_{(u_2, v_2)} \int_{(u_1, v_1)} \int_{(u_2, v_2)} f(l_{p_1}, l_{p_2}) dl_{p_1} dl_{p_2}. \quad (4)$$

Continuous Average Straightness

Overall Average

Average Straightness for the whole graph

The Straightness averaged over the whole graph G is

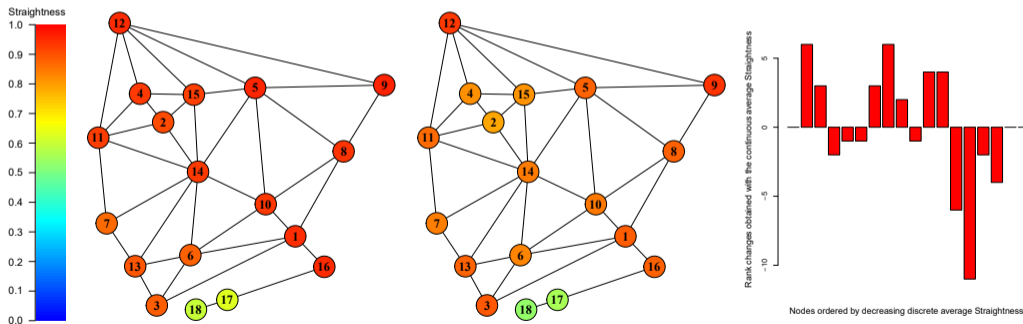
$$S_G = \frac{1}{\sum_{(u_1, v_1)} \sum_{(u_2, v_2)} d_E(u_1, v_1) d_E(u_2, v_2)} \sum_{(u_1, v_1)} \sum_{(u_2, v_2)} \int_{(u_1, v_1)} \int_{(u_2, v_2)} f(\ell_{p_1}, \ell_{p_2}) d\ell_{p_1} d\ell_{p_2}. \quad (5)$$

Computational notes:

- Closed form of the first integral \rightarrow hard-coded
- Not for the second one \rightarrow numerical approximation

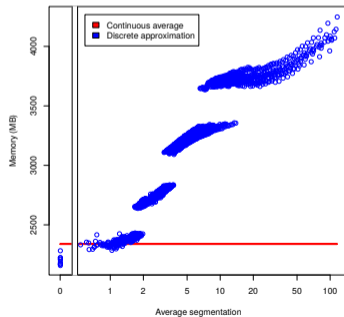
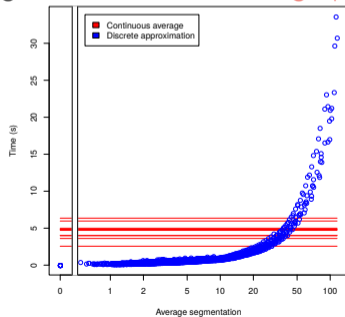
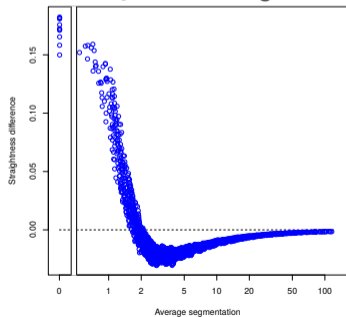
Empirical Assessment Toy Networks

- **Data:** regular graphs and small manually designed graphs
- Qualitative comparison between the discrete version and $S_G(u)$, i.e. average Straightness between a **vertex** and its **graph**:



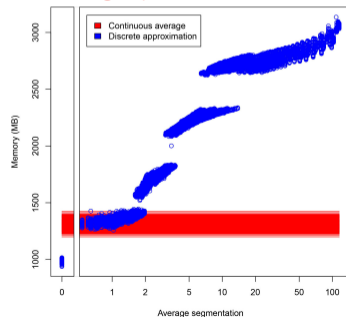
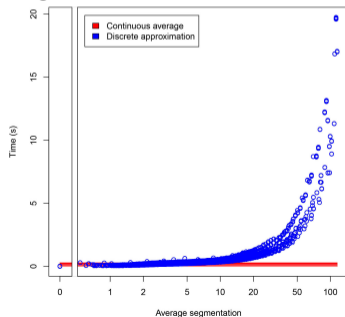
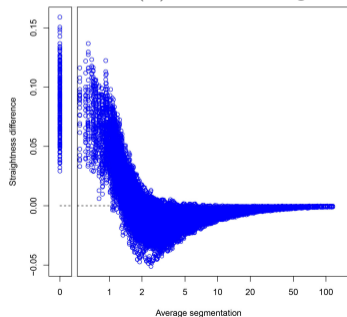
Empirical Assessment Random Planar Graphs

- **Data:** benchmark of random planar graphs
- Considered aspects:
 - Difference between the continuous average S and its discrete approximation
 - Computational time
 - Memory usage
- For S_G , i.e. average Straightness over the **whole graph**:



Empirical Assessment Random Planar Graphs

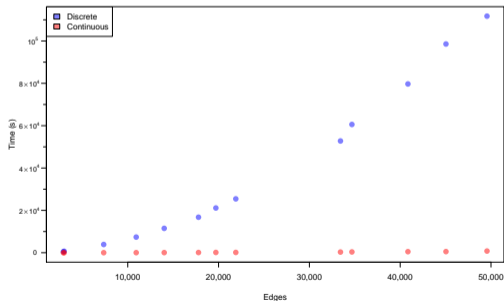
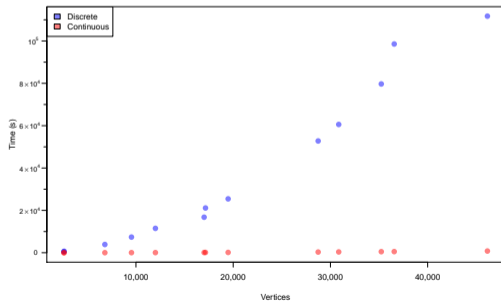
- **Data:** benchmark of random planar graphs
- Considered aspects:
 - Difference between the continuous average and discrete approximation
 - Computational time
 - Memory usage
- For $S_G(u)$, i.e. average Straightness between a **vertex** and its **graph**:



Empirical Assessment

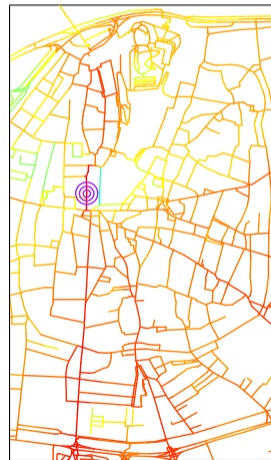
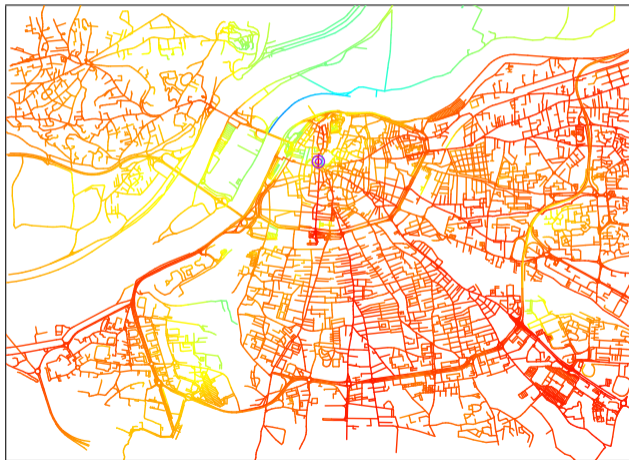
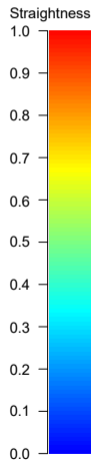
Real-World Road Networks

- **Data:** real-world urban networks retrieved from [OpenStreetMap](#)
- Computation time vs. network size (# vertices and # edges)
- Discrete version and $S_G(u)$, i.e. average Straightness between a **vertex** and its **graph**:



Empirical Assessment Real-World Road Networks

Example : Avignon, average Straightness between the city hall and each edge ($S_{u_2 v_2}(p_1)$)



Conclusion & Perspectives

- Takeaways: **continuous** approach to average the Straightness
 - **Faster**, requires **less** memory
 - More **reliable** Straightness value
 - Definition of 5 distinct **average variants** of the measure
- Resources
 - Paper: **V. Labatut**. "Continuous Average Straightness in Spatial Graphs". In: *Journal of Complex Networks* 6.2 (2018), pp. 269–296. DOI: [10.1093/comnet/cnx033](https://doi.org/10.1093/comnet/cnx033)
 - Source code: <https://github.com/CompNet/SpatialMeasures>
- Perspectives
 - Apply the same principle to **other spatial measures**
 - **Generation** of networks optimizing straightness (and other criteria)

Questions?

Section 5

Additional Material

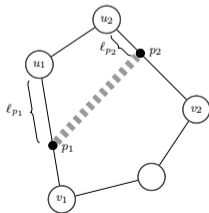
Euclidean Distance Between Two Points

Lemma 3.1 (Euclidean distance between two points)

Let $p_1 \in P$ be a point lying on an edge $(u_1, v_1) \in E$ at a distance ℓ_{p_1} from u_1 , and $p_2 \in P$ be a point lying on an edge $(u_2, v_2) \in E$ at a distance ℓ_{p_2} from u_2 .

The Euclidean distance between p_1 and p_2 can be written in terms of ℓ_{p_1} and ℓ_{p_2} , as:

$$d_E(p_1, p_2) = \left(\left(x_{u_2} + \frac{\ell_{p_2}}{d_E(u_2, v_2)}(x_{v_2} - x_{u_2}) - x_{u_1} - \frac{\ell_{p_1}}{d_E(u_1, v_1)}(x_{v_1} - x_{u_1}) \right)^2 + \left(y_{u_2} + \frac{\ell_{p_2}}{d_E(u_2, v_2)}(y_{v_2} - y_{u_2}) - y_{u_1} - \frac{\ell_{p_1}}{d_E(u_1, v_1)}(y_{v_1} - y_{u_1}) \right)^2 \right)^{1/2}. \quad (6)$$

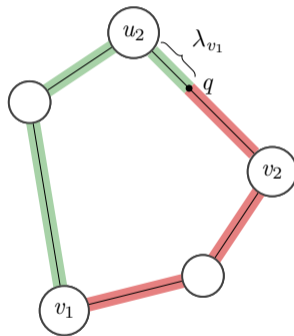


Break-Even Distance for a Vertex

Lemma 3.2 (Break-even distance for a vertex)

Let $v_1 \in V$ be a vertex and $(u_2, v_2) \in E$ an edge such that $v_1 \neq v_2$ and $v_1 \neq u_2$. The break-even distance of (u_2, v_2) for the vertex v_1 , noted λ_{v_1} is:

$$\lambda_r = \frac{d_G(v_1, v_2) - d_G(v_1, u_2) + d_E(u_2, v_2)}{2}. \quad (7)$$

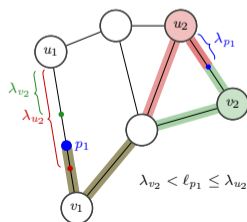
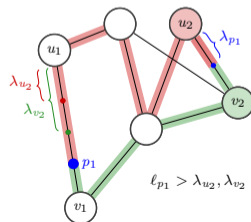
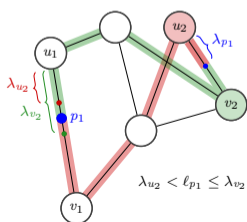
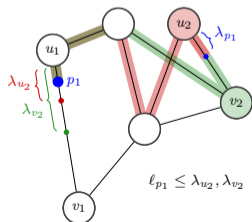


Break-Even Distance for a Point

Lemma 3.4 (Break-even distance for a point)

Let $p_1 \in P$ be a point lying on an edge $(u_1, v_1) \in E$, at a distance ℓ_{p_1} from u_1 , and $(u_2, v_2) \in E$ be a distinct edge (though they can have one common end-vertex). Let the break-even distances of (u_1, v_1) for u_2 and v_2 be λ_{u_2} and λ_{v_2} , respectively. The break-even distance λ_{p_1} of (u_2, v_2) for p_1 is:

$$\lambda_{p_1} = \begin{cases} \lambda_{p_1}^{(1)} = (d_G(u_1, v_2) - d_G(u_1, u_2) + d_E(u_2, v_2))/2, & \text{if } \ell_{p_1} \leq \lambda_{u_2}, \lambda_{v_2}, \\ \lambda_{p_1}^{(2)} = (d_G(v_1, v_2) - d_G(u_1, u_2) + d_E(u_1, v_1) + d_E(u_2, v_2) - 2\ell_{p_1})/2, & \text{if } \lambda_{v_2} < \ell_{p_1} \leq \lambda_{u_2}, \\ \lambda_{p_1}^{(3)} = (d_G(u_1, v_2) - d_G(v_1, u_2) - d_E(u_1, v_1) + d_E(u_2, v_2) + 2\ell_{p_1})/2, & \text{if } \lambda_{u_2} < \ell_{p_1} \leq \lambda_{v_2}, \\ \lambda_{p_1}^{(4)} = (d_G(v_1, v_2) - d_G(v_1, u_2) + d_E(u_2, v_2))/2, & \text{if } \ell_{p_1} > \lambda_{u_2}, \lambda_{v_2}. \end{cases} \quad (8)$$



Empirical Assessment

Real-World Road Networks

City	n	m	δ	Processing time			
				Discrete		Continuous	
Abidjan	2,577	2,908	$8.76 \cdot 10^{-4}$	490.12	(0.02)	4.00	(0.08)
Karlskrona	2,619	2,999	$8.75 \cdot 10^{-4}$	672.36	(0.02)	4.11	(0.06)
Soustons	6,803	7,351	$3.18 \cdot 10^{-4}$	3,889.20	(0.10)	18.13	(0.10)
Maastricht	9,539	10,929	$2.40 \cdot 10^{-4}$	7,379.10	(0.08)	35.84	(0.18)
Trois-Rivières	12,001	14,014	$1.95 \cdot 10^{-4}$	11,504.23	(0.12)	55.54	(0.26)
Alice Springs	17,011	17,790	$1.23 \cdot 10^{-4}$	16,765.85	(0.17)	93.38	(0.56)
Sfax	17,152	19,702	$1.34 \cdot 10^{-4}$	21,122.19	(0.14)	131.18	(0.42)
Avignon	19,481	21,898	$1.15 \cdot 10^{-4}$	25,438.31	(0.20)	136.30	(0.77)
Liverpool	28,739	33,424	$8.09 \cdot 10^{-5}$	52,773.02	(0.20)	313.55	(3.32)
Ljubljana	30,854	34,684	$7.29 \cdot 10^{-5}$	60,572.10	(0.31)	369.35	(26.91)
Lisbon	35,231	40,853	$6.58 \cdot 10^{-5}$	79,702.34	(0.44)	495.99	(9.46)
Dakar	36,561	45,041	$6.74 \cdot 10^{-5}$	98,568.74	(0.40)	530.90	(7.62)
Hong Kong	46,145	49,559	$4.65 \cdot 10^{-5}$	111,724.71	(0.36)	790.45	(8.67)

Section 5

References

References I

- [Bar+22] F. de la Barra, A. Alignier, S. Reyes-Paecke, A. Duane, and M. D. Miranda. "Selecting Graph Metrics with Ecological Significance for Deepening Landscape Characterization: Review and Applications". In: *Land* 11.3 (2022), p. 338. DOI: [10.3390/land11030338](https://doi.org/10.3390/land11030338).
- [Bar11] M. Barthélemy. "Spatial networks". In: *Physics Reports* 499:1–3 (2011), pp. 1–101. DOI: [10.1016/j.physrep.2010.11.002](https://doi.org/10.1016/j.physrep.2010.11.002).
- [BS09] E. Bullmore and O. Sporns. "Complex brain networks: graph theoretical analysis of structural and functional systems". In: *Nature Reviews Neuroscience* 10.3 (2009), pp. 186–198. DOI: [10.1038/nrn2575](https://doi.org/10.1038/nrn2575).
- [GN06] M. T. Gastner and M. E. J. Newman. "Shape and efficiency in spatial distribution networks". In: *Journal of Statistical Mechanics* 01.1 (2006), P01015. DOI: [10.1088/1742-5468/2006/01/P01015](https://doi.org/10.1088/1742-5468/2006/01/P01015).
- [Hes97] P. M. Hess. "Measures of Connectivity". In: *Places* 11 (1997), pp. 58–65. URL: <https://escholarship.org/uc/item/9599t9f1>.
- [KT01] A. R. Kansal and S. Torquato. "Globally and locally minimal weight spanning tree networks". In: *Physica A* 301 (1–4 2001), pp. 601–619. DOI: [10.1016/S0378-4371\(01\)00430-7](https://doi.org/10.1016/S0378-4371(01)00430-7).
- [Lab18] V. Labatut. "Continuous Average Straightness in Spatial Graphs". In: *Journal of Complex Networks* 6.2 (2018), pp. 269–296. DOI: [10.1093/comnet/cnx033](https://doi.org/10.1093/comnet/cnx033).

References II

- [LE09] D. Levinson and A. El-Geneidy. "The minimum circuitry frontier and the journey to work". In: *Regional Science and Urban Economics* 39 (6 2009), pp. 732–738. DOI: [10.1016/j.regsciurbeco.2009.07.003](https://doi.org/10.1016/j.regsciurbeco.2009.07.003).
- [LJB13] R. Louf, P. Jensen, and M. Barthelemy. "Emergence of hierarchy in cost-driven growth of spatial networks". In: *Proceedings of the National Academy of Sciences* 110 (22 2013), pp. 8824–8829. DOI: [10.1073/pnas.1222441110](https://doi.org/10.1073/pnas.1222441110).
- [OM96] S. O'Sullivan and J. Morrall. "Walking Distances to and from Light-Rail Transit Stations". In: *Journal of the Transportation Research Board* 1538 (1996), pp. 19–26. DOI: [10.3141/1538-03](https://doi.org/10.3141/1538-03).
- [PCL06] S. Porta, P. Crucitti, and V. Latora. "The Network Analysis of Urban Streets: A Primal Approach". In: *Environment and Planning B* 33 (5 2006), pp. 705–725. DOI: [10.1068/b32045](https://doi.org/10.1068/b32045).
- [Pun+22] J. Pung, R. M. D'Souza, D. Ghosal, and M. Zhang. "A road network simplification algorithm that preserves topological properties". In: *Applied Network Science* 7 (2022), p. 79. DOI: [10.1007/s41109-022-00521-8](https://doi.org/10.1007/s41109-022-00521-8).
- [Sol+08] R. V. Solé, M. Rosas-Casals, B. Corominas-Murtra, and S. Valverde. "Robustness of the European power grids under intentional attack". In: *Physical Review E* 77.2 (2008), p. 026102. DOI: [10.1103/physreve.77.026102](https://doi.org/10.1103/physreve.77.026102).
- [VLD05] I. Vragović, E. Louis, and A. Díaz-Guilera. "Efficiency of informational transfer in regular and complex networks". In: *Physical Review E* 71 (3 2005), p. 036122. DOI: [10.1103/PhysRevE.71.036122](https://doi.org/10.1103/PhysRevE.71.036122).