



HAL
open science

Modeling Variability in Cardiac Electrophysiology: A Moment Matching Approach

Eliott Tixier, Damiano Lombardi, Blanca Rodriguez, Jean-Frédéric Gerbeau

► **To cite this version:**

Eliott Tixier, Damiano Lombardi, Blanca Rodriguez, Jean-Frédéric Gerbeau. Modeling Variability in Cardiac Electrophysiology: A Moment Matching Approach. *Journal of the Royal Society Interface*, 2017, 14 (133), 10.1098/rsif.2017.0238 . hal-01570828

HAL Id: hal-01570828

<https://hal.science/hal-01570828v1>

Submitted on 31 Jul 2017

HAL is a multi-disciplinary open access archive for the deposit and dissemination of scientific research documents, whether they are published or not. The documents may come from teaching and research institutions in France or abroad, or from public or private research centers.

L'archive ouverte pluridisciplinaire **HAL**, est destinée au dépôt et à la diffusion de documents scientifiques de niveau recherche, publiés ou non, émanant des établissements d'enseignement et de recherche français ou étrangers, des laboratoires publics ou privés.

Modeling Variability in Cardiac Electrophysiology: A Moment Matching Approach

Elliott Tixier^{2,1}, Damiano Lombardi^{1,2}, Blanca Rodriguez³, Jean-Frédéric Gerbeau^{1,2,*}

1 Inria Paris, 75012 Paris, France

2 Sorbonne Universités, UPMC Univ Paris 6, UMR 7598 LJLL, 75005 Paris, France

3 Department of Computer Science, BHF Centre of Research Excellence, University of Oxford, Oxford, United Kingdom * jean-frederic.gerbeau@inria.fr

Abstract

The variability observed in action potential (AP) cardiomyocyte measurements is the consequence of many different sources of randomness. Often ignored, this variability may be studied to gain insight into the cell ionic properties. In this paper, we focus on the study of ionic channel conductances and we describe a methodology to estimate their probability density function (PDF) from action potential recordings. The method relies on the matching of observable statistical moments and on the maximum entropy principle. We present four case studies using synthetic and experimental AP measurements sets from human and canine cardiomyocytes. In each case, the proposed methodology is applied to infer the PDF of key conductances from the exhibited variability. The estimated PDFs are discussed and, when possible, compared to the true distributions. We conclude that it is possible to extract relevant information from the variability in AP measurements and discuss the limitations and possible implications of the proposed approach.

Introduction

The variability observed in action potential (AP) measurements is, like in most biological systems, the consequence of many different sources of randomness. In this paper we focus on parameter randomness which, in the context of AP modeling, corresponds to the natural variability of the cardiomyocyte electrical properties such as its capacitance, ionic channel conductances and gate time constants. Due to the large number of free parameters in AP models, these parameters are in practice unidentifiable [15, 42]. In fact, different combinations of these parameters can lead to the same AP. Therefore, we choose to restrict our analysis to ionic channel maximal current densities which for convenience are referred to as conductances in the following. Among these conductances, a subset is selected to account for the observed variability depending on the available data set. AP measurements may result from heterogeneity within a population of cells (inter-subject variability) [41] or from dynamic variations within a single cell (intra-subject variability) [24, 36]. In this paper, we propose a novel way to study the variability of AP models parameters in both contexts. From a modeling point of view, it is convenient to ignore the variability of electrophysiology measurements (and therefore of the underlying parameters) since a set of fixed parameters is sought. However, investigating the variability of AP models parameters has several motivations. It can be used to predict the response of cardiomyocytes to certain drugs [3]. It can also provide insight into cell modifications at the origin of common heart diseases such as atrial fibrillation [41, 47] or ventricular arrhythmia [17].

There are two main strategies to estimate the parameters variability given a set of AP measurements. First, one could fit the AP model to each measurement individually and therefore obtain a set of parameters from which useful statistics may be computed. The problem of fitting an individual AP has been addressed many times and using a large variety of methods [4, 15, 21, 25, 30, 45]. However, the computational cost of such a strategy scales with the number of available experimental samples and may therefore be prohibitive. As a consequence, only a low number of cells can be analyzed this way. The second strategy belongs to the so-called population of models approach. The experimental set is considered as a whole and the parameters statistics are estimated by solving a statistical inverse problem. Several techniques were developed to solve such problems [19, 28] and

their application to electrophysiology has recently generated much interest [3, 16, 32, 39, 41]. The present approach belongs to the second strategy. The AP model parameters are described as random variables associated with an unknown probability density function (PDF). The proposed method aims at estimating the parameters PDF, thus generalizing the commonly used mean \pm standard deviation intervals. The PDF is sought so that it “explains” the observed variability featured by a given set of AP measurements. More precisely, the estimated PDF is the solution of a constrained optimization problem which is an adaptation of the maximum entropy principle [23]. The method, later referred to as Observable Moment Matching (OMM), is detailed in [18]. Contrary to other approaches such as Monte-Carlo Markov Chains (MCMC) [40] or Approximate Bayesian Computation [2], the present method does not guarantee to converge to the true parameters distribution. Instead, it proposes a way to obtain an approximation of the underlying PDF at the fraction of the cost of other finer methods. In this paper, the OMM method is applied to the estimation of the PDF of key conductances from AP measurements. These measurements may be the AP time series (sometimes referred to as waveforms or traces) or be in the form of biomarkers, i.e. features extracted from the time series. Four different case studies are presented to illustrate the use of the OMM method in different scenarios. Test cases 1 and 2 feature synthetic data sets with AP biomarkers and time series. Test case 3 features an experimental data set with intra-subject variability and Test case 4 features an experimental data set with inter-subject variability.

Methods

Electrophysiology Measurements

Synthetic datasets

For validation purposes, the proposed method to solve our statistical inverse problem is first applied to synthetic measurements, i.e. APs generated by a computational model and corrupted by some noise. An example of such synthetic measurements is shown in Figure 2. Here, the noise is an independent zero-mean normally distributed random variable. The signal-to-noise ratio (SNR) is written in dB and defined as:

$$\text{SNR} = 10 \log_{10} \left(\frac{A^2}{2\tau^2} \right), \quad (1)$$

where τ is the noise standard deviation and A the AP amplitude.

In Test Cases 1 and 2, the synthetic data sets are generated by evaluating the AP computational model for different values of the parameters, i.e. conductances, of interest. The parameters are sampled from a known distribution so that the estimated PDF may be compared to the true one.

Experimental datasets

In what follows, we are using published AP recordings that are readily available online. In Test Case 3, the experimental data set consists of several APs recorded on a single canine ventricular cell [24]¹. This allows us to investigate beat-to-beat variability which is a type of intra-subject variability. About 570 cycles are available, 200 in control conditions and the remaining after the addition of a drug and the modification of the bath ionic concentrations. In Test Case 4, the experimental data set consists of human atrial cardiomyocytes measurements coming from different subjects [41]². Interestingly, the data set is divided into two groups: one counting 254 Sinus Rythm (SR) patients and another one counting 215 chronic Atrial Fibrillation (AF) patients.

Electrophysiology Cell Models

Cell models

Throughout the four test cases presented in this paper, three different AP computational models are used. Using different models serves two purposes. First, it illustrates the fact that the OMM method can successfully be applied to different scenarios. Different cardiac cellular models were used to illustrate that our methods are not model specific. Second, it is more natural to use models that were designed from experimental setups that are close

¹Data are available here <http://www.cs.ox.ac.uk/chaste/download.html>

²Data are available here <http://journals.plos.org/plosone/article?id=10.1371/journal.pone.0105897>

to those of the available data sets. In Test Cases 2 and 4, the human atrial model by Courtemanche *et al.* [9] was used. It is one of the first human heart cell models. Mostly based on the Luo and Rudy [31] membrane currents formulations, it was developed using experimental recordings from human atrial cells. In Test Case 1 (resp. 3), the canine ventricular model by Decker *et al.* [13] (resp. Davies *et al.* [12]) was used. Both models are improvements of the Hund and Rudy model [22] with updated current formulations to fit canine epicardium (for the Decker model) and mid-myocardial (for the Davies model) cells. All three models belong to the so-called second generation [26] for they provide detailed descriptions of the main ionic channels, pumps and exchangers as well as the internal calcium dynamics. For the sake of convenience, these models will be referred to by their first author’s name. We will focus on the PDF estimation of six key conductances corresponding to the following currents: the fast sodium current I_{Na} , the inward rectifier potassium current I_{K1} , the transient outward potassium current I_{to} (I_{to1} in the canine models), the rapid (resp. slow) delayed rectifier potassium current I_{Kr} (resp. I_{Ks}) and the L-type calcium current I_{CaL} . For the sake of clarity, g_{Na} , g_{K1} , g_{to} , g_{Kr} , g_{Ks} , g_{CaL} will refer to a multiplicative coefficient for the corresponding values found in the literature. For instance, $g_{Na} = 1$ means that g_{Na} is set to the same value as that of the original paper. When necessary, a table will summarize the conductances that have been modified from their reference values.

Numerical Methods

The previously mentioned models consist of a set of coupled ordinary differential equations (ODEs) whose formulae are detailed e.g. on the CellML project website [10]. The Courtemanche and Davies models were implemented in an in-house C++ code and the simulation outputs were compared with those of the Matlab implementations found on the CellML website. The time integration of the ODEs is carried out using the CVODE library [8] which implements the Backward Differentiation Formulae. This state-of-the-art time integrator is well suited to stiff problems as those encountered in electrophysiology. It is adaptive, in time step and order, which can significantly save computational time. For all the test cases, the absolute and relative tolerances of the CVODE solver were set to 10^{-6} . For the Decker model, the time integration was carried out using variable but non-adaptive time steps. The stimulation protocol consists in stimulating at a frequency of 1 Hz (or 2 Hz for Test Case 2) over a few cycles so that the recorded AP lies in a permanent regime. In practice, the number of these transition cycles was set to 5 (10 for APs stimulated at 2Hz) and the relative difference norm between two consecutives APs is less than 0.1%. Unless stated otherwise, the stimulation duration is set to 2 ms and its amplitude to 20 μA .

AP time series

In Test Case 1, the AP time series are used as the observable. This means that the inverse procedure possibly uses the AP value at every available time step. This has the advantage of capturing all of the available information but also the disadvantage of increasing the computational cost of the inverse procedure since the number of time steps may be large. To tackle this issue, a time step selection algorithm was developed and is described in [18]. It uses the pre-computed simulation database to approximate the sensitivities with respect to each parameter and for each time step. Using these sensitivities, the time steps are clustered using an agglomerative clustering algorithm and a representative is chosen for each cluster. Only the representatives are retained for the inverse procedure. In practice their number is much lower than the total number of time steps, thus alleviating the computational cost of the inverse procedure. Indeed, as described in [18], the OMM procedure cost is dominated by the inversion of a dense matrix of size $(N_m \times N_t)^2$. Furthermore, reducing the number of time steps is motivated by numerical considerations since the conditioning of this matrix deteriorates as the number of time steps increases. This time step selection comes at no cost since it uses the already computed simulation database.

Since the ODEs are solved using an adaptive time-stepping, each AP simulation is discretized on a different time grid and later interpolated on a common grid. This interpolation procedure introduces a numerical error which may be considered as a numerical noise, alongside the noise in the measurements (whether synthetic or experimental).

AP biomarkers

In Test Cases 2, 3 and 4, the inverse procedure is applied to so-called biomarkers, which are quantities computed from the AP time series. They describe the main features of the AP such as its shape or its duration. We will focus on the following biomarkers (see Figure 1): the AP duration APD90 (resp. APD50, APD30, etc.) at 90%

repolarization (resp. 50%, 30%, etc.), the resting membrane potential RMP, the maximum upstroke velocity dV/dt_{\max} , the AP value at 20% repolarization V_{20} (which roughly corresponds to the AP plateau value), the AP value 30 ms after depolarization V_{notch} and the Area Under the Curve (AUC), i.e. the AP time integral over one cycle.

Even though these quantities seem to well capture the main features of a given AP, they generally don't convey enough information about the underlying parameters for the inverse procedure. Therefore, the pairwise products (APD90 \times APD50, APD90 \times APD20 and so on) of the above biomarkers are added to the moments constraints. Note that the AP triangulation is a commonly used biomarker and may be interpreted as the pairwise product between APD90 and 1/APD30. For the synthetic measurements, the noise is added to the AP time series before computing the biomarkers.

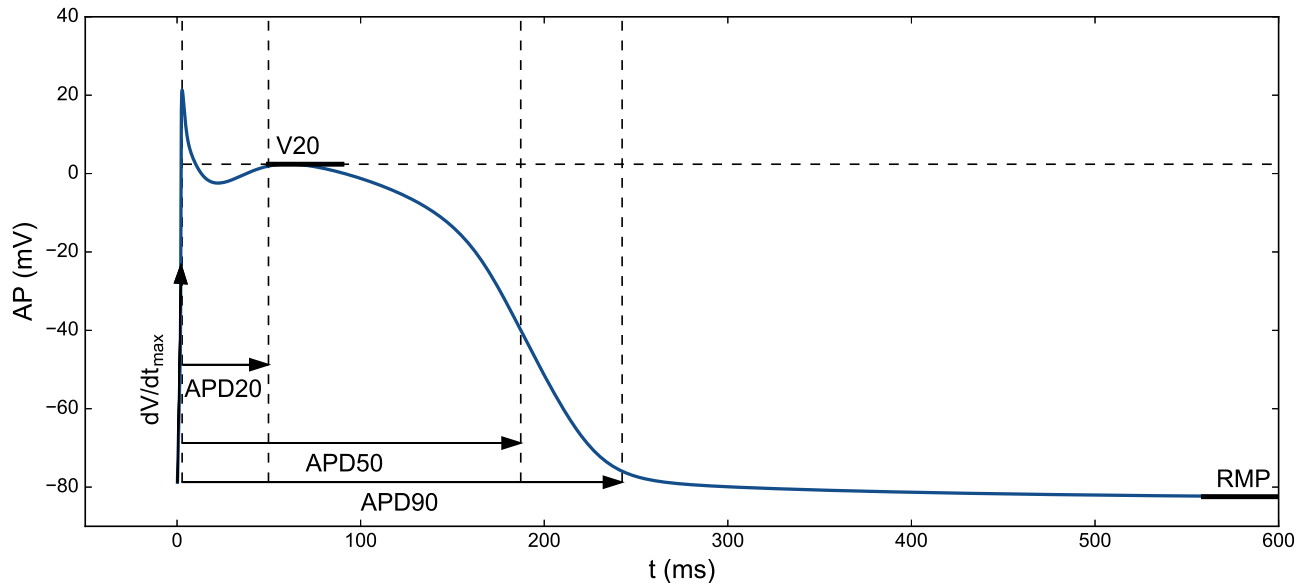


Figure 1. Biomarkers computed from an AP.

Parameter calibration

We restrain our parameter estimation study to three to six conductances. This assumption is critical and is discussed in the Discussion section. This means that the parameters of interest are allowed to vary while all the other parameters of the model remain fixed. While it seems reasonable to choose the values found in the literature for these parameters, it often proves to be a bad choice when dealing with real data. Therefore, one needs to calibrate these parameters before performing the inverse procedure using the most representative experimental sample of the available data set. In Test Case 3, the most representative sample is the one whose biomarkers are the closest to the median values (there is one representative for each group). In Test Case 4, the most representative sample is the AP whose APD90 is the closest to the median value. Once these representative samples are identified, a parameter calibration procedure is performed for all ionic conductances. S1 Table.9 shows the values obtained from the literature for these parameters as well as their estimated counterparts for both Courtemanche and Davies models. The Table also shows some external ions concentrations. These were directly set using the bath descriptions available in the publications associated with the experimental data sets. The parameter calibration is actually a constrained minimization problem where the cost function J to be minimized reads:

$$J(\mathbf{g}) = \sum_{i=1}^{N_t} ((u(t_i, \mathbf{g}) - y(t_i))^2 + K \sum_{j=1}^{n_p} (g_j - \hat{g}_j)^2), \quad (2)$$

where y is the experimental quantity of interest, u the corresponding simulation output and N_t the number of values to be fitted (number of biomarkers or number of time steps depending on the test case). The second part of the cost function is a regularization term where n_p is the number of conductances to fit, g_j the estimated value of the j^{th} conductance, \hat{g}_j its nominal value and K is a user-defined regularization parameter. This term

ensures that the conductances remain within a reasonable range around the nominal values. In practice, this parameter is chosen to be small compared to the first term in (2) so that the conductances are weakly constrained around relevant values without too much impact on the fitting quality. When possible, this parameter K may even be set to zero. In S1 Fig.1, a brief study of the effect of K is performed. The models considered in this work are not well suited to classical gradient optimization techniques as they consist of many and strongly nonlinear ODEs, making the gradient computations challenging and the cost function highly irregular. For the sake of simplicity, we therefore used gradient-free optimization techniques such as genetic algorithms [45]. We chose the Covariance Matrix Adaptation Evolution Strategy (CMA-ES) evolutionary algorithm [20] for it is currently one of the most performant genetic algorithm and was used successfully in a variety of applications. Furthermore, a Python (as well as other languages) implementation of the CMA-ES algorithm is available online ³ and behaves like a black-box optimization tool. The CMA-ES algorithm was recently used in a similar context in [24], where conductances of several models (including the Davies model) were estimated from both synthetic and experimental measurements. Note that all parameters values are not allowed to take negative values but they are not limited by any upper bound. An exception is made for the fast sodium conductance g_{Na} (which is limited to five times its nominal value) for numerical reasons. Indeed, a high value of g_{Na} may lead to a failure of the time integration around the upstroke.

Observable Moment Matching Method

We now give an overview of the OMM method. This method aims at obtaining an approximation of the parameters PDF at a low computational cost. This approximation is however not meant to reach the precision of finer methods such as MCMC. The interested reader is referred to [18] where more details are provided.

Construction of the simulation database

The OMM method relies on the pre-computation of a simulation database of many APs (or AP biomarkers) by varying the parameters of interest. We introduce the parameter space Θ , which is a subset of \mathbb{R}^{n_p} where n_p is the number of parameters (the conductances in our case). A point in Θ , or parameters sample, is denoted by $\boldsymbol{\theta} = (\theta_1, \dots, \theta_{n_p})$. The parameter space is discretized using the Sobol sequence [44]. This sampling method is well-suited to the present framework: it uniformly spans the parameter space in a low-discrepancy manner while featuring a simple Monte-Carlo quadrature rule; it requires little knowledge of the true parameters distribution; furthermore, as the latin hypercube method used in [3], it only requires a lower and upper bound for each parameter and the total number of samples. Points in the discretized space will be called collocation points and the total number of these points will be denoted by N_c . The discretization of the parameter space is therefore given by the set $\{\boldsymbol{\theta}_1, \dots, \boldsymbol{\theta}_{N_c}\}$. For each collocation point, one AP is simulated using the numerical protocol described above and stored. Note that once this simulation database is built, no additional AP simulation is required during the inverse procedure.

Optimization problem

Given a PDF ρ , the moment of order m of the simulations at a given point t (time step or biomarker index) is defined by:

$$\mu_m^\rho(t) = \int_{\boldsymbol{\theta} \in \Theta} u(\boldsymbol{\theta}, t)^m \rho(\boldsymbol{\theta}) d\boldsymbol{\theta},$$

where $u(\boldsymbol{\theta}, t)$ is the simulation output, already computed and stored in the database. The empirical moments of order m of the measurements at a given point t is defined by:

$$\hat{\mu}_m(t) = \frac{1}{N} \sum_{i=1}^N y_i(t)^m,$$

where $y_i(t)$ is the observable value at point t of the i^{th} experimental sample and N is the total number of experimental samples. The goal of the OMM method is to find the PDF ρ such that the moments, up to a certain order N_m , of the simulations and of the experiments match at every point t . This moment matching condition will later be referred to as the moment matching constraints. As explained above, in the case where many observable

³https://www.lri.fr/~hansen/cmaes_inmatlab.html#python

quantities are available, a procedure has been set up to select a subset for which the moment matching constraints hold. In general however, the stated moment problem is under-determined, meaning there exists an infinity of different ρ that satisfy the moment constraints. We propose to regularize the problem using the maximum entropy principle where the entropy of a given PDF ρ is given by:

$$S(\rho) = - \int_{\boldsymbol{\theta} \in \Theta} \rho(\boldsymbol{\theta}) \log [\rho(\boldsymbol{\theta})] d\boldsymbol{\theta}$$

This type of regularization roots in information theory [23], it is considered the most natural choice when limited information about a PDF is available. It is also well-suited to our optimization problem for practical mathematical reasons. In Section 2.4.2. of [18], we propose an analysis of the error on the PDF estimation made by adopting the maximum entropy regularization. In Prop. 1. of the same paper, it is shown that under certain conditions on the regularity of the observable and identifiability of the parameters, the error on the PDF is bounded. The conditions on the regularity of the observable may not be easy to check formally because of the nonlinearities of the state equations. Nevertheless, for the practical problems considered in this work, they do not seem critical. The condition on the identifiability may also be difficult to assess in general. In our algorithm, the identifiability issues are circumvented by regularizing the Hessian in the optimization problem and by selecting the points where the moments are matched (see Discussion section). Finally, the estimated PDF is the solution of the following constrained optimization problem:

$$\begin{cases} \max_{\rho} & S(\rho) \\ \text{s.t.} & \begin{cases} \mu_m^\rho(t) & = \hat{\mu}(t) & \text{(moment constraints)} \\ \int_{\boldsymbol{\theta}} \rho(\boldsymbol{\theta}) d\boldsymbol{\theta} & = 1 & \text{(normalization)} \end{cases} \end{cases} \quad (3)$$

The optimization problem is recast using Lagrange multipliers for the constraints and the corresponding Euler-Lagrange multipliers are solved using a quasi-Newton method. Denoting by $|\Theta|$ the volume of Θ , the integrals over the parameter space of a given quantity f are approximated using the Monte-Carlo quadrature rule:

$$\int_{\boldsymbol{\theta} \in \Theta} f(\boldsymbol{\theta}) d\boldsymbol{\theta} \simeq \frac{|\Theta|}{N_c} \sum_1^{N_c} f(\boldsymbol{\theta}_i). \quad (4)$$

In S1 Appendix A, an illustration of the OMM method on a simple test case using the Davies model is provided.

Post-processing

The PDF is a real-valued multivariate function of n_p variables. The output of the OMM method is the estimated PDF values at each collocation point in the parameter space. We insist on the fact that the estimated PDF does not take any parametric form (such as a multivariate Gaussian for instance) but is defined point-wise. However, beyond two dimensions, its visualization becomes complex and may not provide much information. Therefore, as it is the case in the remainder of the article, the PDF is post-processed so that the marginal densities of the parameters may be visualized. The marginal density $z_p(x)$ of parameter p at point x reads:

$$z_p(x) = \int_{(\theta_1, \dots, \theta_{p-1}, x, \theta_{p+1}, \dots, \theta_{n_p}) \in \Theta} \rho(\boldsymbol{\theta}) d\theta_1 \dots d\theta_{p-1} d\theta_{p+1} \dots d\theta_{n_p}.$$

This step actually needs a finer grid in the parameter space than that provided by the Sobol sequence. The estimated PDF is interpolated on the finer grid using kernel smoothing. This step is discussed in detail in [18]. In addition to the marginal densities, the estimated parameter moments $\mu_m(\theta_p)$ may also be computed directly from the PDF:

$$\mu_m(\theta_p) = \int_{\boldsymbol{\theta} \in \Theta} \rho(\boldsymbol{\theta}) \theta_p^m d\boldsymbol{\theta}.$$

Then, one can compare $\mu_1(\theta_p)$, the mean of parameter p and its standard deviation $\sqrt{\mu_2(\theta_p) - \mu_1(\theta_p)^2}$ to their true values when known. In practice, the integral quantities are all approximated using (4).

Implementation details

An online repository in open access ⁴ has been created to make available data and codes used in this paper. In each test case, the computational time of the inverse procedure is strongly dominated by the simulation database construction. All other steps of the method, including the OMM method itself have a negligible computational time. The approximative CPU times given for each test case are meant for one processor. This means the real time may be reduced by simulating the APs in parallel, which is done in practice. Simulations were performed on a Linux machine counting 12 Intel(R) Xeon(R) CPU E5-2640 @ 2.50GHz processors. External libraries are used in our code: Eigen 3 and GSL-BLAS for the matrix/vector manipulations and algebra and the Python library Scikit-learn [35] for the time-step selection algorithm.

Comparison with existing methods

As discussed earlier, it is possible to infer the PDF of conductances of interest by performing an individual inverse problem (or fitting) for each sample of the experimental measurements. However, if there are N experimental samples, the cost of such an approach would be N times the cost of a single fitting. On the contrary, the proposed approach performs the PDF estimation by taking into account only the statistical moments of the measurements set. Its main advantage is that it does not scale with the number of measurements samples. In that regard it is, in most scenarios, computationally cheaper than individually estimating the parameters from each sample. Furthermore, all model evaluations are performed offline and once and for all so that the main cost of the inverse procedure can be decided in advance.

Another popular method performing estimations of PDFs is the Bayesian inference. It guarantees to converge to the true PDF, which the present approach does not claim to do, at the expense of many forward model evaluations. The present approach may therefore be seen as a less precise but computationally cheaper alternative to Bayesian inference.

In [18], we provide a comparison of our method to two other approaches.

Results

The observable moment matching method is now applied to four test cases, using both experimental and synthetic AP measurements.

Test Case 1: Decker Model with Synthetic Data

In this test case, the OMM method is applied to a synthetic data set using the Decker model with different scenarios: one in control conditions and one with a blocked channel (which models for example the effect of a drug). We show that combining data from both scenarios increases the precision of the PDF estimation of the conductances of interest.

Control Conditions

For the synthetic data set, $N = 10^4$ APs were generated using the Decker model with six uncertain parameters: g_{Na} , g_{K1} , g_{to} , g_{Kr} , g_{Ks} , g_{CaL} . The N samples were drawn from an uncorrelated multivariate normal distribution of mean 1.1 and standard deviation 0.15. The SNR is equal to 41 dB. The simulation database was built by sampling the same six parameters over the domain $\Theta = [0.5, 2.0]^6$. $N_c = 2^{15}$ samples were drawn and the corresponding APs are shown in Figure 2. The construction of the simulation database required a CPU time of approximately 1000 minutes for one processor. For both the synthetic data set and simulation database, all remaining parameters are fixed and set to their reference values. In this test case, the observable quantities used in the OMM method are the whole AP time series. The observable quantities are therefore the AP values at each of the 449 time steps sampled from the time integration grid. The number of moments to be matched is set to $N_m = 3$. As mentioned earlier, a procedure has been set up to select only a subset of the available time steps to perform the inverse problem.

The OMM method is applied and the resulting estimated marginal densities are shown in Figure 3. This allows us to make a clear comparison between the parameters true densities and their estimated ones. S1 Table.1 shows a

⁴https://github.com/eltix/omm_jrsi

more thorough comparison between the estimated parameters statistics and their true ones. Except for g_{Ks} , their mean values are accurately estimated (the error is always below 1%) and the errors on the standard deviations range from 3 to 21%. Five out of six conductances are correctly estimated while the estimation of g_{Ks} is poor. This is actually a conductance which is known to be difficult to estimate when others vary, mainly due to the fact that its effect is hidden by other conductances (mainly g_{Kr}). Therefore, a strategy was devised to reduce the uncertainty on the parameter g_{Ks} .

Block Conditions

To unveil the effects of g_{Ks} onto the AP waveform, a drug block scenario is devised to “mask” the effects of the other conductances that compete with g_{Ks} . Here, we simulate the effect of a hypothetical drug by blocking 90% of the I_{to} , I_{Kr} , I_{CaL} channels, i.e. by setting the corresponding conductances to 10% of their reference values. The same protocol as in the control conditions is followed to generate the synthetic data set and the simulation database, this time varying only the three remaining conductances (g_{Na} , g_{K1} and g_{Ks}) with $N = 10^4$ samples for the synthetic data set and $N_c = 2^{12}$ collocation points for the simulation database. The construction of the simulation database required a CPU time of approximately 125 minutes for one processor.

The OMM method is applied and the results are shown in S1 Table.2 and Figure 3. The density of g_{Ks} is now recovered with a good precision as the conductances previously responsible for its non-identifiability remain fixed.

Combining Control and Drug Block Conditions

The drug block and control conditions are now combined to simultaneously estimate the PDF of the six conductances of interest. This is done by slightly modifying the inverse procedure. In addition to enforcing the moment constraints of the AP values in the control conditions, the moments of the parameters themselves (g_{Na} , g_{K1} and g_{Ks}) are also constrained to match those estimated in the drug block conditions. In practice, this is easily done by adding these new constraints to the initial set of constraints (see Eq. (3)). This is therefore analogous to solving the inverse problem in the control conditions with the additional knowledge of the parameters statistics obtained in the drug block conditions.

The final results are shown in S1 Table.3 and in Figure 3. This procedure achieves a much better estimation of the density of g_{Ks} . The errors on the mean and standard deviation of g_{Ks} are significantly reduced while the accuracy of the estimation of the other conductances is similar to that of the control conditions.

Test Case 2: Synthetic Data at Different Pacing Frequencies

In this test case, the OMM method is applied to a synthetic data set using the Courtemanche model. Different scenarios are investigated by varying the frequency of the stimulations that trigger the APs.

Control Conditions with 1Hz Pacing

For the synthetic data set, $N = 10^4$ APs were generated using the Decker model with six uncertain parameters: g_{Na} , g_{K1} , g_{to} , g_{Kr} , g_{Ks} , g_{CaL} . The N samples were drawn from an uncorrelated multivariate normal distribution of mean 1.1 and standard deviation 0.15. The SNR is equal to 43 dB. The simulation database was built by sampling the same six parameters over the domain $\Theta = [0.5, 2.0]^6$. $N_c = 2^{15}$ samples were drawn and the corresponding APs are shown in Figure 2. The construction of the simulation database required a CPU time of approximately 1100 minutes for one processor. In this test case, the observable quantities are the following 9 AP biomarkers: APD90, APD50, APD30, APA, RMP, V20, $dVdt_{max}$, V_{notch} and AUC and the maximum moment order is set to $N_m = 2$. Adding the biomarkers pairwise products, the number of moments constraints add up to 54. The OMM method was applied to this test case and the estimated parameters statistics are presented in S1 Table.4. The estimated marginal densities for each of the six parameters are shown in Figure 4. While four out of six conductances are estimated with a reasonable precision, g_{Kr} , and to bigger extent g_{Ks} , are not well estimated.

2Hz Pacing

The same simulation protocol is followed, this time by stimulating the APs at a 2Hz frequency. The accelerated simulation pace induces modifications to the AP morphology (such as a reduced APD) which should reveal new information about the parameters compared to a 1Hz stimulation. The OMM method was applied to this modified

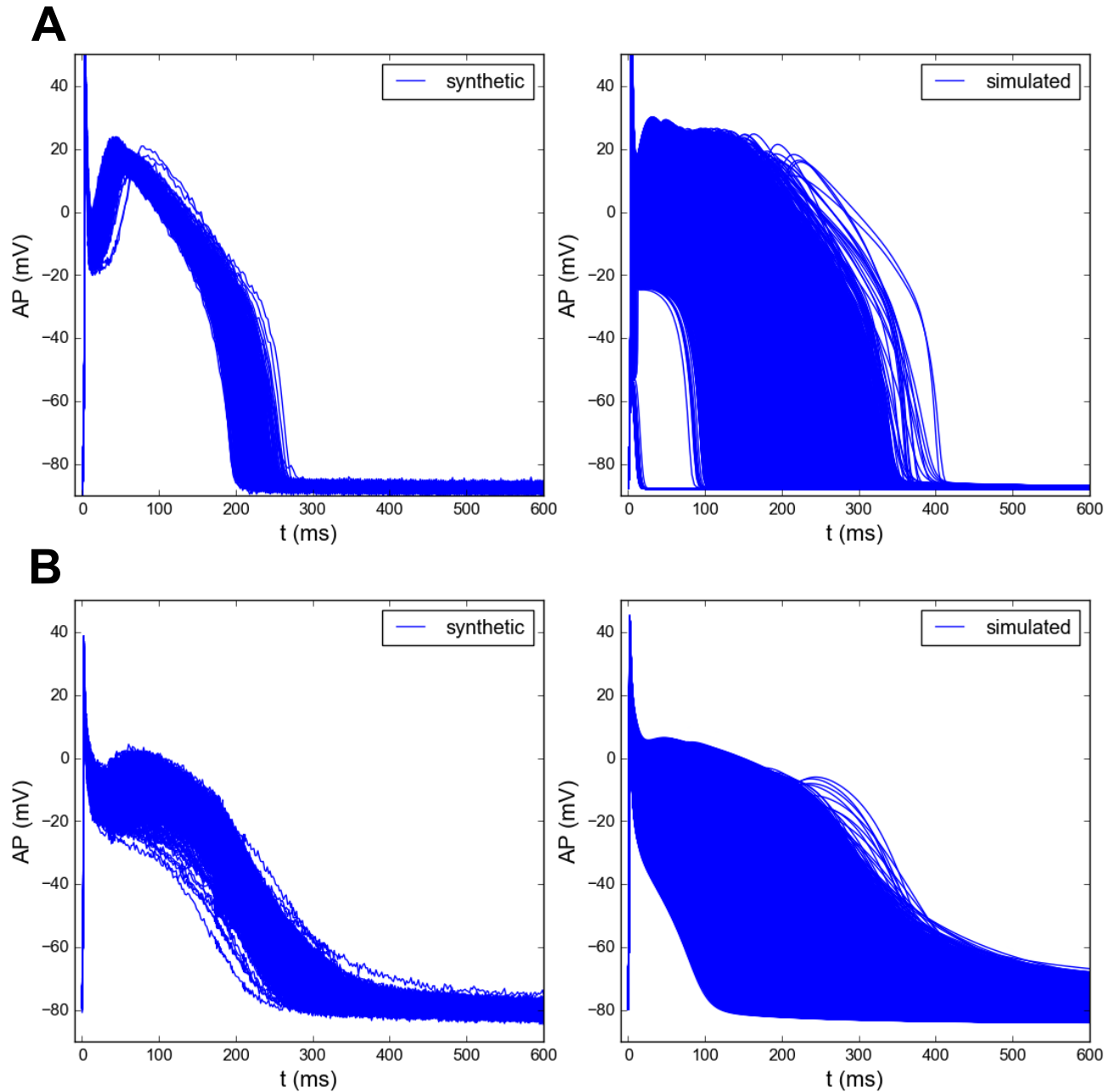


Figure 2. (A) AP data sets generated using the Decker model: synthetic data used for the observations (left) and simulation database (right). (B) AP data sets generated using the Courtemanche model: synthetic data used for the observations (left) and simulation database (right).

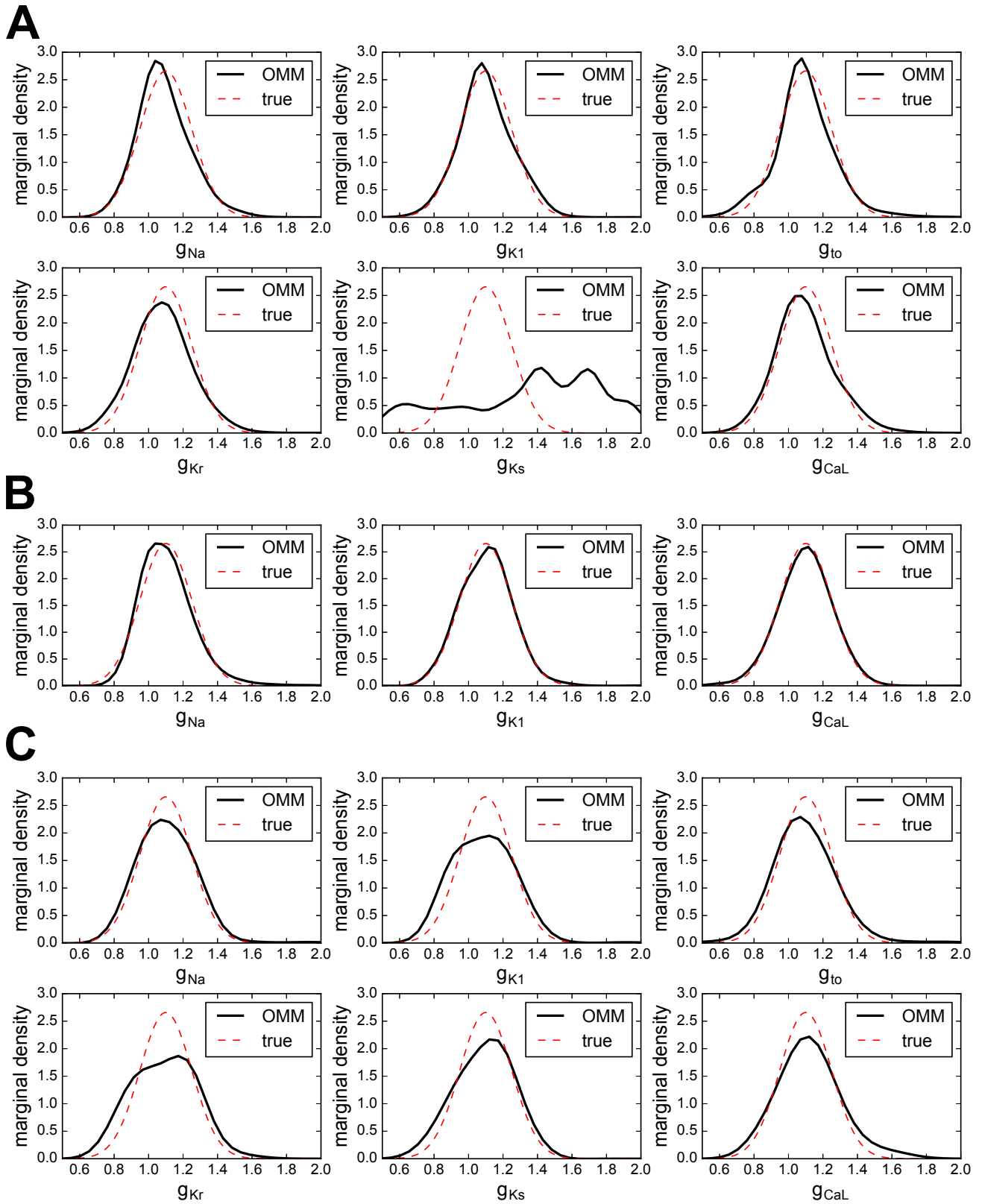


Figure 3. Test Case 1 using the Decker model and synthetic data. Conductances estimated marginal densities (A) in control conditions (no drug block), (B) in drug block conditions (90% block of I_{to} , I_{Kr} and I_{CaL}) and (C) using combined data from control and drug block conditions.

test case. While the exhibited variability differs from the 1Hz case, no significant improvement over the parameters estimation may be noticed. Results are shown in Figure 4 and S1 Table.5.

Combining 1Hz and 2Hz data

A way to take advantage of the information available in the previous two scenarios consists in combining data obtained at 1Hz and 2Hz pacing frequency both for the synthetic data set and the simulation set. The same inverse procedure as before is applied with the following extended set of biomarkers:

$\{\text{APD90}_{1\text{Hz}}, \text{APD50}_{1\text{Hz}}, \text{APD30}_{1\text{Hz}}, \text{RMP}_{1\text{Hz}}, \text{dV}/\text{dt}_{\text{max},1\text{Hz}}, \text{V20}_{1\text{Hz}}, \text{V}_{\text{notch},1\text{Hz}}, \text{AUC}_{1\text{Hz}}, \text{APD90}_{2\text{Hz}}, \text{APD50}_{2\text{Hz}}, \text{V20}_{2\text{Hz}}, \text{V}_{\text{notch},2\text{Hz}}, \text{AUC}_{2\text{Hz}}\}$.

These biomarkers are enriched by their pairwise products which amounts to a total of 119 quantities to be matched. Results are shown in Figure 4 and S1 Table.6. While g_{Ks} is still not correctly estimated, this strategy succeeds in reducing the uncertainty for parameters g_{Kr} and g_{CaL} .

Test Case 3: Experimental Data from Canine Ventricular Cells

This experimental data set (used in [24] and available online ⁵) features beat-to-beat variability of APs recorded from a single canine ventricular cardiomyocyte. Here, only a subset (traces #100 to #199) of the available data set is used.

Calibration of the Davies model

The Davies model was chosen to study this data set since it is one of the most recent canine ventricular cell models. In addition, this model was also used in [24] to study the same data set. The parameter calibration procedure was carried out using the most representative AP of the experimental set and a regularization parameter $K = 0$ (*i.e.* no regularization). Figure 5 shows the representative AP as well as its fitted counterpart using the Davies model. In Figure 5 is plotted the history of six conductances values for each iteration of the CMA-ES algorithm. The conductances are normalized with respect to the values found in the reference paper. Note that the values obtained after the calibration are far from the reference values (equal to one by definition), confirming the necessity of such a procedure. This is also true for the other fitted parameters which are not shown in the figure for the sake of clarity but whose values are given in S1 Table.7. Note that g_{Ks} seems to reach an extremely high value. It is however consistent with the values found in [24] and may be explained by a difference in the experimental settings.

Inverse procedure

The OMM procedure is applied with the following biomarkers as observable quantities: APD90, APD50 and V_{notch} . Here, V_{notch} is the notch potential corresponding to the AP value 8 ms after the depolarization peak. The reason V_{notch} was preferred over previously introduced V20 is that the latter was not suited to the AP shape and its value was almost constant over the experimental set. We made the assumption that the observed variability was due to variations of g_{Kr} , g_{Ks} (commonly associated with APD variations) and g_{to1} (commonly associated with variations of V_{notch}). These conductances are among the most responsible for beat-to-beat variability [37]. The simulation database was built by sampling these three conductances over the domain $\Theta = [0.4, 1.8]^3$ and $N_c = 2^{13}$ samples were drawn. The construction of the simulation database required a CPU time of approximately 175 minutes for one processor. The marginal distributions of the three parameters of interest are shown in Figure 6 and the estimated statistics are summarized in S1 Table.7.

Comparison with individually fitted APs

Since the exact distributions of the parameters of interest are unknown, a comparison study is carried out using two other PDF estimation techniques. The experimental APs are individually fitted to the Davies model using the CMA-ES algorithm. The same fitting procedure is used as in the calibration step using the AP values at different times (see Figure 5). In the first case, only the three conductances of interest are allowed to vary while the others remain fixed. In the second case, all conductances (those concerned by the calibration step) are allowed to vary. In both cases, the fitting procedure yields a collection of $N = 100$ values for the three conductances of interest. The distributions are then approximated using histograms, shown in Figure 6. Even though biomarkers were

⁵<http://www.cs.ox.ac.uk/chaste/download.html>

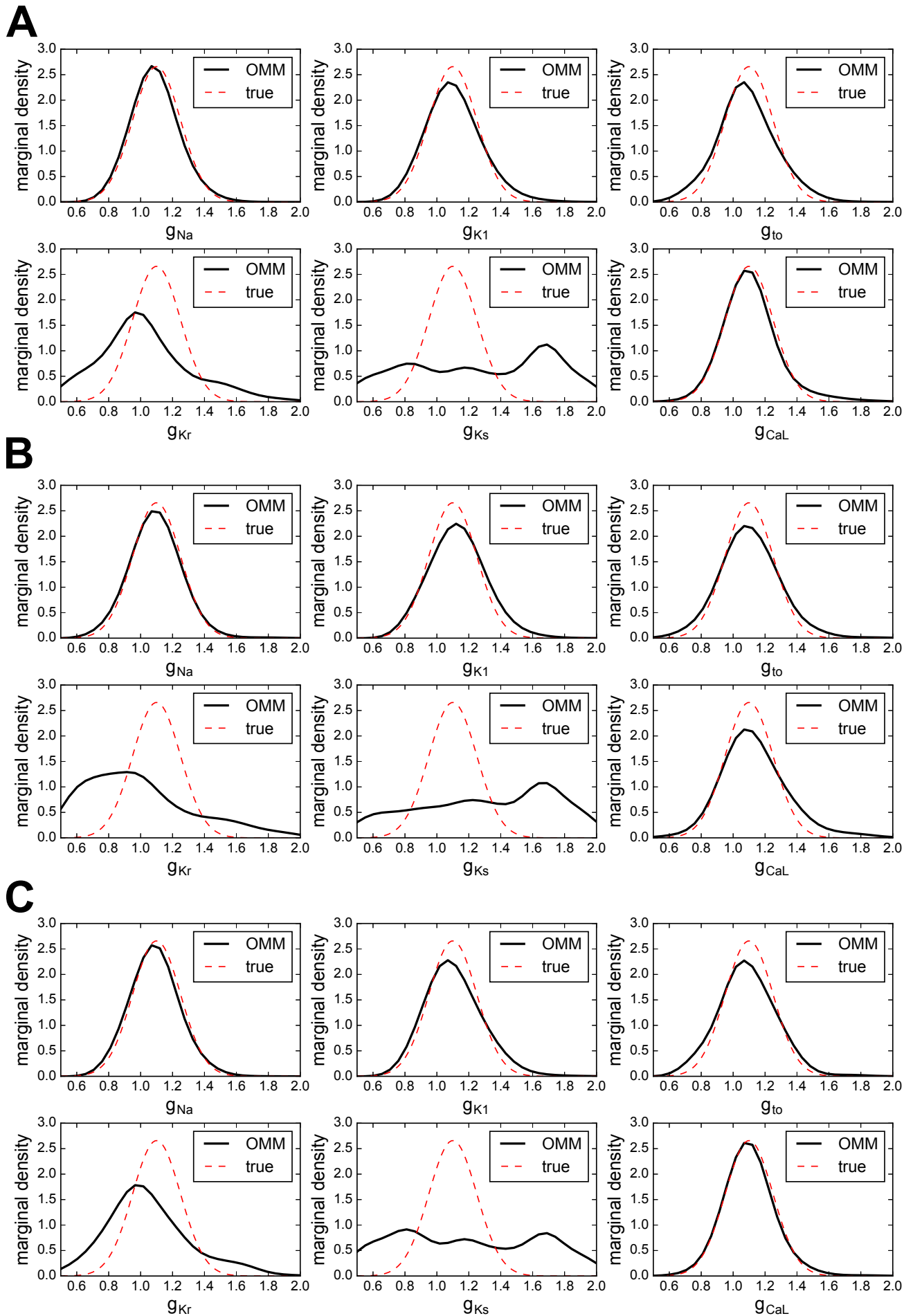


Figure 4. Test Case 2 using the Courtemanche model and synthetic data. Conductances estimated marginal densities (A) (B) (C) (D) (E) (F) (G) (H) (I) (J) (K) (L) (M) (N) (O) (P) (Q) (R) (S) (T) (U) (V) (W) (X) (Y) (Z) (AA) (AB) (AC) (AD) (AE) (AF) (AG) (AH) (AI) (AJ) (AK) (AL) (AM) (AN) (AO) (AP) (AQ) (AR) (AS) (AT) (AU) (AV) (AW) (AX) (AY) (AZ) (BA) (BB) (BC) (BD) (BE) (BF) (BG) (BH) (BI) (BJ) (BK) (BL) (BM) (BN) (BO) (BP) (BQ) (BR) (BS) (BT) (BU) (BV) (BW) (BX) (BY) (BZ) (CA) (CB) (CC) (CD) (CE) (CF) (CG) (CH) (CI) (CJ) (CK) (CL) (CM) (CN) (CO) (CP) (CQ) (CR) (CS) (CT) (CU) (CV) (CW) (CX) (CY) (CZ) (DA) (DB) (DC) (DD) (DE) (DF) (DG) (DH) (DI) (DJ) (DK) (DL) (DM) (DN) (DO) (DP) (DQ) (DR) (DS) (DT) (DU) (DV) (DW) (DX) (DY) (DZ) (EA) (EB) (EC) (ED) (EE) (EF) (EG) (EH) (EI) (EJ) (EK) (EL) (EM) (EN) (EO) (EP) (EQ) (ER) (ES) (ET) (EU) (EV) (EW) (EX) (EY) (EZ) (FA) (FB) (FC) (FD) (FE) (FF) (FG) (FH) (FI) (FJ) (FK) (FL) (FM) (FN) (FO) (FP) (FQ) (FR) (FS) (FT) (FU) (FV) (FW) (FX) (FY) (FZ) (GA) (GB) (GC) (GD) (GE) (GF) (GG) (GH) (GI) (GJ) (GK) (GL) (GM) (GN) (GO) (GP) (GQ) (GR) (GS) (GT) (GU) (GV) (GW) (GX) (GY) (GZ) (HA) (HB) (HC) (HD) (HE) (HF) (HG) (HH) (HI) (HJ) (HK) (HL) (HM) (HN) (HO) (HP) (HQ) (HR) (HS) (HT) (HU) (HV) (HW) (HX) (HY) (HZ) (IA) (IB) (IC) (ID) (IE) (IF) (IG) (IH) (II) (IJ) (IK) (IL) (IM) (IN) (IO) (IP) (IQ) (IR) (IS) (IT) (IU) (IV) (IW) (IX) (IY) (IZ) (JA) (JB) (JC) (JD) (JE) (JF) (JG) (JH) (JI) (JJ) (JK) (JL) (JM) (JN) (JO) (JP) (JQ) (JR) (JS) (JT) (JU) (JV) (JW) (JX) (JY) (JZ) (KA) (KB) (KC) (KD) (KE) (KF) (KG) (KH) (KI) (KJ) (KL) (KM) (KN) (KO) (KP) (KQ) (KR) (KS) (KT) (KU) (KV) (KW) (KX) (KY) (KZ) (LA) (LB) (LC) (LD) (LE) (LF) (LG) (LH) (LI) (LJ) (LK) (LM) (LN) (LO) (LP) (LQ) (LR) (LS) (LT) (LU) (LV) (LW) (LX) (LY) (LZ) (MA) (MB) (MC) (MD) (ME) (MF) (MG) (MH) (MI) (MJ) (MK) (ML) (MN) (MO) (MP) (MQ) (MR) (MS) (MT) (MU) (MV) (MW) (MX) (MY) (MZ) (NA) (NB) (NC) (ND) (NE) (NF) (NG) (NH) (NI) (NJ) (NK) (NL) (NM) (NN) (NO) (NP) (NQ) (NR) (NS) (NT) (NU) (NV) (NW) (NX) (NY) (NZ) (OA) (OB) (OC) (OD) (OE) (OF) (OG) (OH) (OI) (OJ) (OK) (OL) (OM) (ON) (OO) (OP) (OQ) (OR) (OS) (OT) (OU) (OV) (OW) (OX) (OY) (OZ) (PA) (PB) (PC) (PD) (PE) (PF) (PG) (PH) (PI) (PJ) (PK) (PL) (PM) (PN) (PO) (PP) (PQ) (PR) (PS) (PT) (PU) (PV) (PW) (PX) (PY) (PZ) (QA) (QB) (QC) (QD) (QE) (QF) (QG) (QH) (QI) (QJ) (QK) (QL) (QM) (QN) (QO) (QP) (QQ) (QR) (QS) (QT) (QU) (QV) (QW) (QX) (QY) (QZ) (RA) (RB) (RC) (RD) (RE) (RF) (RG) (RH) (RI) (RJ) (RK) (RL) (RM) (RN) (RO) (RP) (RQ) (RR) (RS) (RT) (RU) (RV) (RW) (RX) (RY) (RZ) (SA) (SB) (SC) (SD) (SE) (SF) (SG) (SH) (SI) (SJ) (SK) (SL) (SM) (SN) (SO) (SP) (SQ) (SR) (SS) (ST) (SU) (SV) (SW) (SX) (SY) (SZ) (TA) (TB) (TC) (TD) (TE) (TF) (TG) (TH) (TI) (TJ) (TK) (TL) (TM) (TN) (TO) (TP) (TQ) (TR) (TS) (TT) (TU) (TV) (TW) (TX) (TY) (TZ) (UA) (UB) (UC) (UD) (UE) (UF) (UG) (UH) (UI) (UJ) (UK) (UL) (UM) (UN) (UO) (UP) (UQ) (UR) (US) (UT) (UU) (UV) (UW) (UX) (UY) (UZ) (VA) (VB) (VC) (VD) (VE) (VF) (VG) (VH) (VI) (VJ) (VK) (VL) (VM) (VN) (VO) (VP) (VQ) (VR) (VS) (VT) (VU) (VV) (VW) (VX) (VY) (VZ) (WA) (WB) (WC) (WD) (WE) (WF) (WG) (WH) (WI) (WJ) (WK) (WL) (WM) (WN) (WO) (WP) (WQ) (WR) (WS) (WT) (WU) (WV) (WW) (WX) (WY) (WZ) (XA) (XB) (XC) (XD) (XE) (XF) (XG) (XH) (XI) (XJ) (XK) (XL) (XM) (XN) (XO) (XP) (XQ) (XR) (XS) (XT) (XU) (XV) (XW) (XX) (XY) (XZ) (YA) (YB) (YC) (YD) (YE) (YF) (YG) (YH) (YI) (YJ) (YK) (YL) (YM) (YN) (YO) (YP) (YQ) (YR) (YS) (YT) (YU) (YV) (YW) (YX) (YZ) (ZA) (ZB) (ZC) (ZD) (ZE) (ZF) (ZG) (ZH) (ZI) (ZJ) (ZK) (ZL) (ZM) (ZN) (ZO) (ZP) (ZQ) (ZR) (ZS) (ZT) (ZU) (ZV) (ZW) (ZX) (ZY) (ZZ)

used for the OMM procedure and time series were used for both individual fitting procedures, the parameters distributions show a striking similarity, especially for the case where only the three conductances of interest are allowed to vary. This suggests that the set of biomarkers retained is enough to account for the observed variability. This also shows the overall satisfactory performances of the observable moment matching method which achieves comparable results to individual CMA-ES fits at a fraction of the computational cost. Indeed, the 100 individual CMA-ES fits required around 10^5 model evaluations while the OMM method only required 8192.

Test Case 4: Experimental Data from Human Atrial Cells

This experimental dataset (used in [38,41] and available online ⁶) features AP biomarkers recorded from two populations of human atrial cells. The OMM procedure is independently applied to both groups and the distributions of the conductances of interest between the two groups are compared.

Human biomarkers dataset

The data set consists of 469 experimentally recorded sets of 7 human AP biomarkers divided in two groups: sinus rhythm (SR) with 254 samples and chronic atrial fibrillation (AF) with 215 samples. Both groups exhibit a strong inter-subject variability in addition to the inter-group variability. The available biomarkers are: APD90, APD50, APD20, APA, RMP, dV/dt_{\max} , V20.

Courtemanche model calibration

The Courtemanche model was chosen to study this data set. Prior to the inverse procedure, a model calibration step is independently carried out for both groups. The regularization parameter is set to $K = 5 \times 10^{-3}$. The CMA-ES algorithm is applied to fit the Courtemanche model parameters to the most representative sample within each group. The representative sample is the one which minimizes its euclidean distance to the median biomarkers values of its group. S1 Table.8 shows the most representative samples from each group as well as some global statistics of the biomarkers set. In S1 Table.9 are displayed 11 conductances of the Courtemanche model that were estimated during the calibration step. First, for both groups, the estimated parameters values differ from those found in the literature. Second, there is a significant increase in g_{K1} and a significant decrease in g_{to} , g_{CaL} and g_{Kur} from the SR to the AF group. These modifications are commonly considered as a good AF remodeling strategy [5,14,48]. For each set of estimated conductances, an AP is simulated using the Courtemanche model. One obtains a typical or most representative AP for each group. Figure 7 shows such APs along with the AP obtained with the reference parameters found in the literature. The AF AP features a shorter APD and a more triangular shape than the SR one, which is typical of atrial fibrillation [29,46]. This figure also highlights the fact that choosing the literature values as baseline may not be a good choice for the SR group, and to a greater extent for the AF group. In the same figure is added an AP that was obtained by applying the suggested AF remodeling found in [48] to the SR model (65% decrease of g_{CaL} and g_{to} , 49% decrease of g_{Kur} and 110% increase of g_{K1}). Both AF APs are very different and this suggests that AF remodeling should be designed specifically for a given experimental set.

Inverse procedure

The OMM method is applied with four biomarkers of interest as observable quantities: APD90, RMP, dV/dt_{\max} and V20. For each group, a simulation database is built by sampling the following four conductances: g_{Na} , g_{K1} and g_{to} and g_{Kr} . $N_c = 2^{14}$ samples are drawn using the Sobol sequence and the number of moments to be matched is set to $N_m = 2$. The construction of the simulation database required, for each group, a CPU time of approximately 550 minutes for one processor. The results of the inverse procedure are presented in S1 Table.10 and Figure 7. Since no exact solution is known, one may only qualitatively interpret the result. While g_{Na} follows a common distribution in both groups, the other three conductances show striking differences. One way to validate the results is to compare the estimated PDF of the observable quantities (the four biomarkers of interest) with the experimental one. By construction, they must have the same mean and standard deviation since 2 moments are matched for each biomarkers. However, this does not guarantee that the distributions are identical since an infinite number of distributions satisfy the moment constraints. In Figure 7 are plotted the histograms of the experimental biomarkers along with the estimated biomarkers PDF obtained with the OMM method. In S1 Fig.2,

⁶<http://journals.plos.org/plosone/article?id=10.1371/journal.pone.0105897>

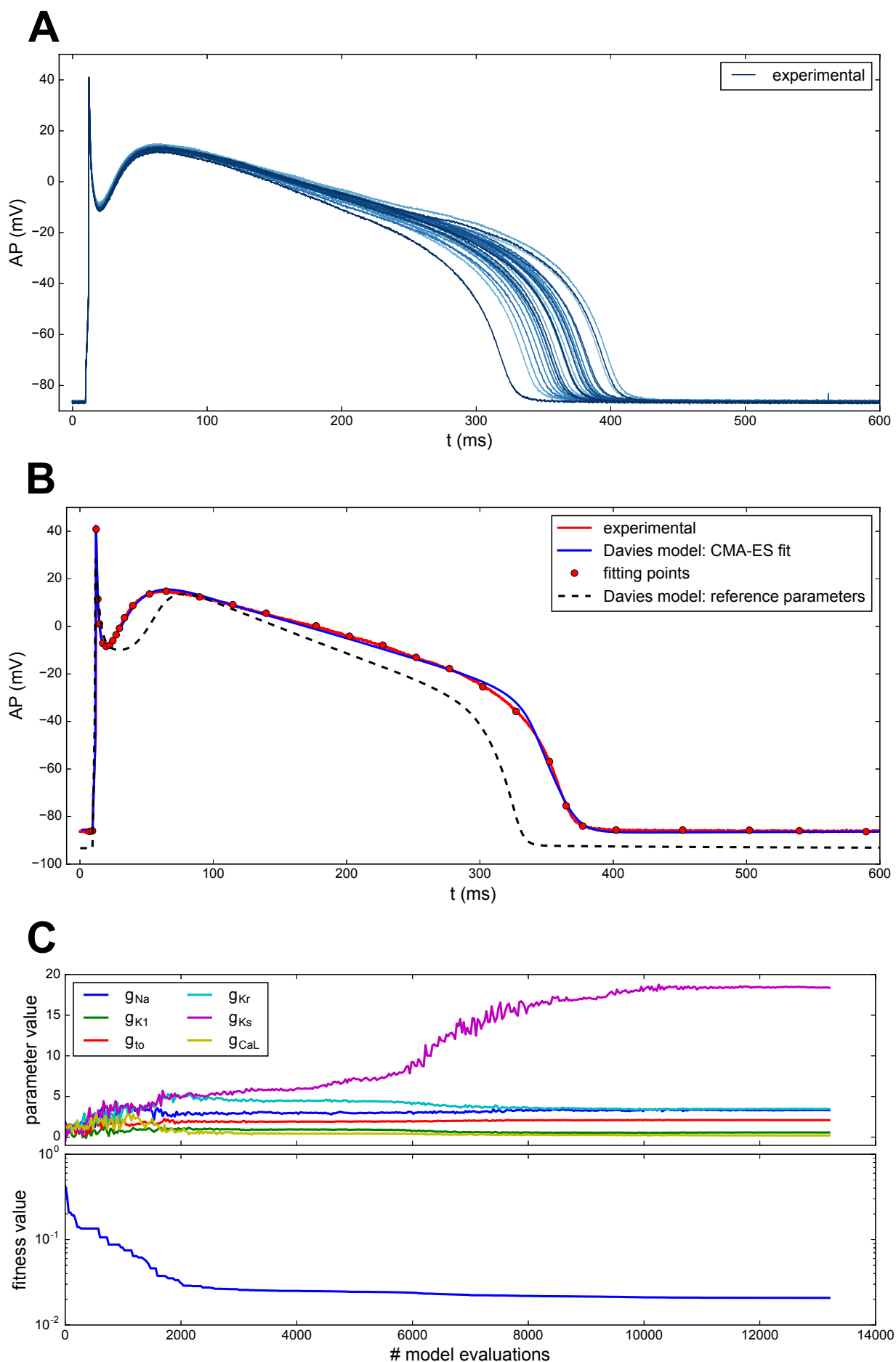


Figure 5. (A) Canine ventricular AP experimental set [24]. (B) Davies model calibration step: experimental representative AP (solid red), corresponding CMA-ES fit (solid blue) and reference parameters (dashed). (C) CMA-ES iterations (top) and fitness value (bottom) over the number of model evaluations.

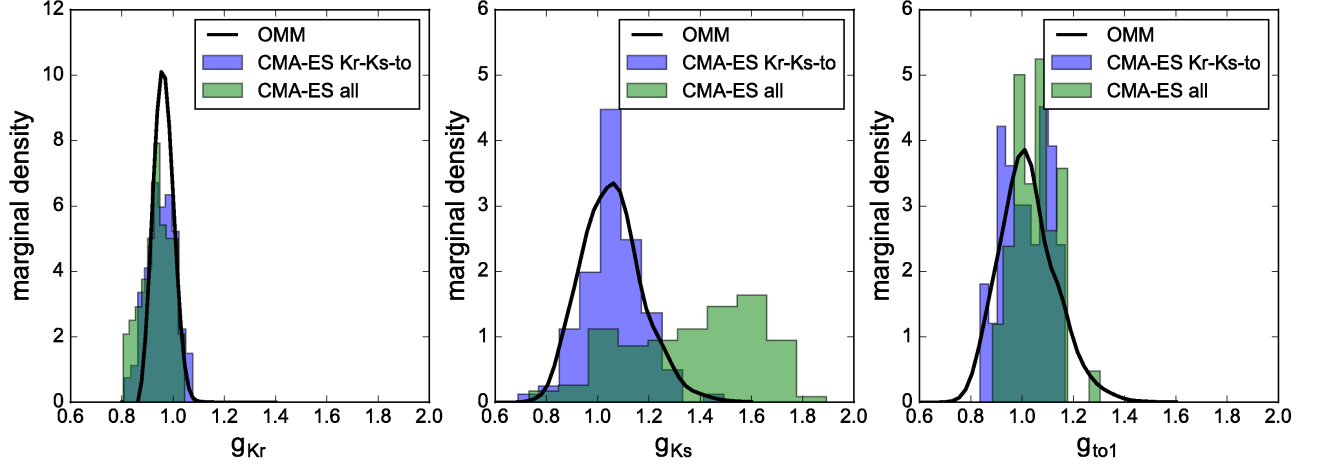


Figure 6. Test Case 3 using the Davies model and 100 AP recordings from a canine ventricular cardiomyocyte. Conductances marginal densities estimated using the OMM method (solid lines) and individual CMA-ES fits (blue and green bins). Conductances are normalized by the calibrated values.

we replicated the same plot for the pairwise products of the biomarkers. The distributions are very similar for each biomarkers which suggests that choosing $N_m = 2$ is sufficient in this particular case. Note also that, even though the biomarkers distributions are close to Gaussian ones, this is definitely not true for the conductances distributions.

Discussion

In this study, we have presented the OMM method which serves the general purpose of estimating the PDF of uncertain model parameters from a set of measurements. It has been applied to electrophysiology measurements and illustrated with four different test cases.

Test Cases 1 and 2 illustrate the proposed method with synthetic data sets, which has two advantages. First, one may try a large variety of parameters configurations which may be difficult or impossible to obtain in experimental conditions. Second, knowing the true distributions of the parameters allows for a thorough evaluation of the estimated parameters PDF. In Test Case 1, the proposed method is applied to synthetic measurements generated from the Decker canine model. The OMM method was applied to estimate the PDF of six uncertain conductances. It showed that the OMM method is able to simultaneously estimate the PDF of several conductances.

The authors would like to stress out that the proposed method provides an estimation that is an approximation of the real underlying PDF of the parameters. This approximation is less precise than what would be achievable with finer methods such as Bayesian inference but has the advantage of being computationally less demanding in general. In [18], the authors suggest that the present approach could serve as a prior generator for Bayesian inference.

The quality of the estimation obtained depends on the identifiability of the parameters given the available data. However, if a parameter is poorly identifiable (which is the case of g_{K_s} in this particular scenario) or even unidentifiable, the method does not fail owing to the approximation of the Hessian associated with the problem in (3) and the regularization induced by the choice of a subset of time steps where the moments are matched. In that case, such a parameter is characterized by a flat estimated distribution. In the context of experimental data, a strategy may be set up to assess which parameters of the model are actually identifiable, prior to applying the inverse procedure. Such strategies exist (see e.g. [34]) but were not investigated in the present work. Nevertheless, when faced with an estimated flat distribution for one parameter, it is possible to perform the following numerical experiment to assess whether this parameter is unidentifiable or its PDF is in fact uniform. Small perturbations (that conserve the norm and positivity of the PDF) may be added to the estimated PDF along the direction of the seemingly unidentifiable parameter. If the moment constraints are still verified, then it probably means that the parameter is in fact unidentifiable. To improve the estimation of the hidden g_{K_s} parameter, an artificial drug block remodeling was applied to the Decker model. This drug was designed to block the currents that were responsible for the unidentifiability of g_{K_s} . This remodeling consisted in practice in reducing the corresponding parameters

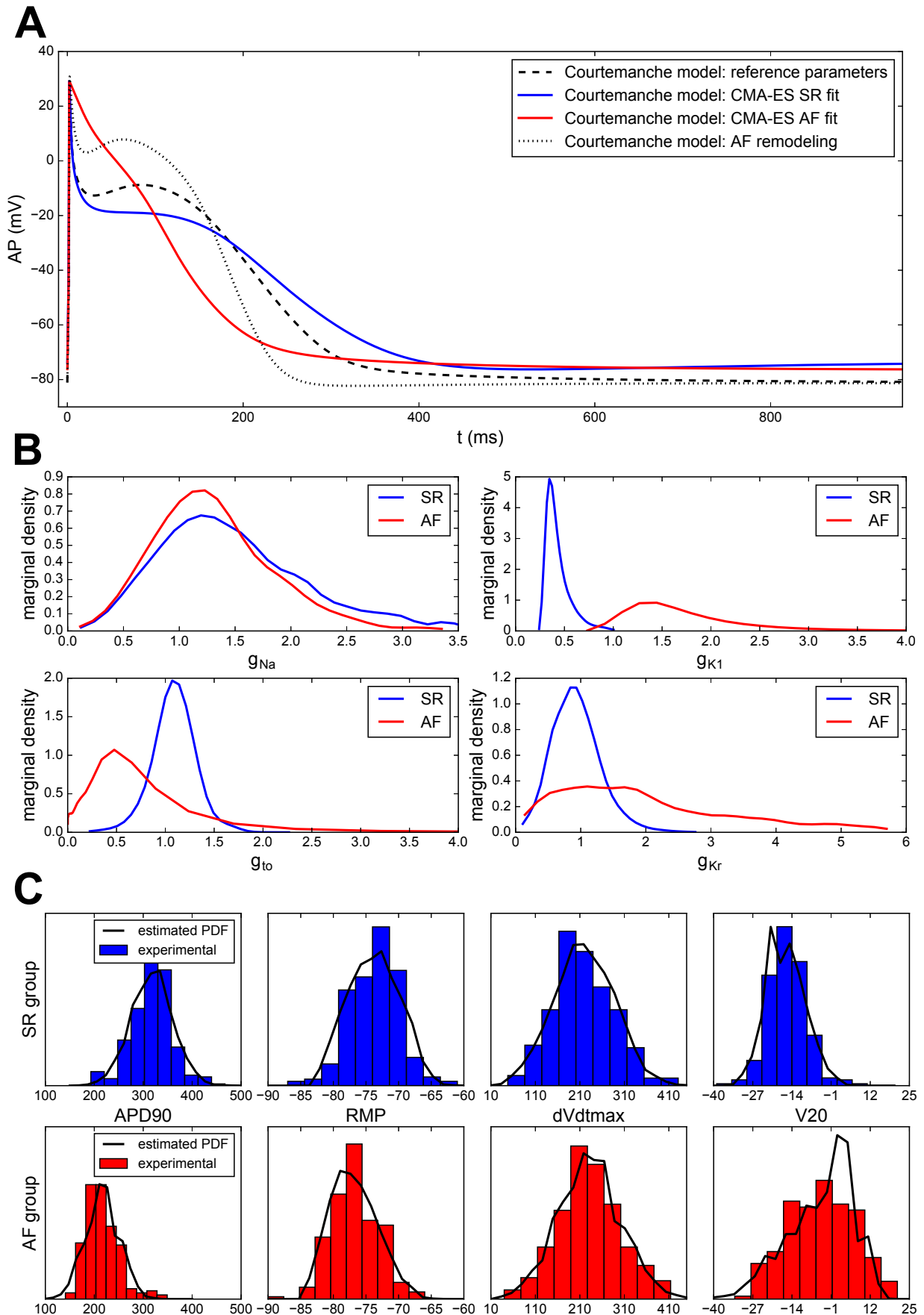


Figure 7. (A) CMA-ES parameter calibration of the Courtemanche model prior to the inverse procedure. APs obtained for the most representative samples of the SR (blue) and AF (red) groups, with the reference parameters (dashed) and after AF remodeling (dotted). (B) Courtemanche conductances estimated marginal densities for the SR group (blue) and AF group (red). Conductances are normalized by the literature values. (C) Normalized histograms of the four experimental biomarkers of interest for both SR (blue) and AF (red) groups. The black solid lines correspond to the PDF of each biomarker estimated by the observable moment matching method.

values to 10% of their nominal values. This strategy proved to significantly improve the estimation of g_{Ks} and showed that the OMM has potential applications in two contexts. First, it may be used to infer the effect (or toxicity) of a drug using actual experimental data. Second, it may help gain insight into experimental protocols that can be set up to estimate quantities that are otherwise hidden. These findings must however be mitigated by the fact that, in real cells, it is improbable that a given drug only affects a set of targeted ionic currents. It most probably affects the whole cell kinetics and dynamics, including quantities that were supposed to remain unchanged in our artificial scenario. It is also important to note that some stimulation protocols or drug block experiments are not easily achievable in real experiments. In most cases, especially when using human tissue, it is simply not possible to conduct additional experiments because the tissue is critical to answer more novel research questions. It is an important practicality that makes recordings using animals different to those possible using human tissue. Nevertheless, it may prove useful to inform novel experiments that can be conducted to reduce the uncertainty in the estimation of conductances profiles based on successful numerical scenarios.

The OMM method is related to the populations of models (POM) approach but differs from it on certain aspects. Whereas the focus of our method is to approximate parameters distributions, POM studies intend to investigate the implications of potential parameters ranges. It would indeed not be possible to confidently estimate conductances from ranges of action potential biomarkers and additional constrains would be required, as shown in our study. Other studies such as [3], and those reviewed by Muszkiewicz *et al.* [33] have triggered important discussions and increased interest in an important area of research that requires diversity of techniques and approaches, as shown here. In this context, our study suggests a new method for PDF estimation that may indeed be very useful for new applications.

In Test Case 2, the OMM method is applied to synthetic measurements generated from the Courtemanche human atrial model. The distribution of six conductances were estimated from AP biomarkers obtained in control conditions. Interestingly, the variability observed in the biomarkers set is less informative than that of the AP traces themselves. This is highlighted by the fact that two conductances distributions are poorly estimated compared to the first test case. Indeed, the biomarkers are features computed from the AP traces themselves and are therefore doomed to carry as much or less information about the underlying parameters. However, studying biomarkers instead of AP traces is justified by the fact that, in practice, certain experimental sets only contain biomarkers values. To tackle this, a strategy was set up to extract more information from the AP biomarkers. This was done by changing the stimulation frequency which unveiled new dynamics and therefore new information about the parameters. Interestingly, such a strategy may easily be transposed to an actual experimental protocol. It is in fact commonly practiced in cardiomyocyte experimental studies [50]. Combining the data obtained using two different frequencies improved the estimation of g_{Kr} and g_{CaL} . g_{Ks} was however still poorly estimated, mainly due to the fact that its effect is very similar to that of g_{Kr} , with a lower amplitude. The investigation of richer stimulation protocols, such as in [15], in order to improve the estimation of poorly identifiable parameters could be the focus of future investigations. It is, in certain cases, possible to successfully estimate g_{Ks} by conducting an adequate numerical experiment. In [24] for instance, the authors use the combined recordings of an AP in normal conditions and with g_{Ks} set to zero.

In Test Case 3, the OMM method is applied to a set of experimental canine APs recorded from a single canine ventricular cardiomyocyte. This experimental set is an illustration of beat-to-beat variability which is mostly characterized by variations of the APD. It is therefore natural to make the hypothesis that these variations are in fact due to fluctuations of the delayed-rectifier potassium currents magnitudes (g_{Kr} and g_{Ks}) which are the most responsible for APD variations. The APs also exhibit variations around the notch region which motivated the addition of g_{to} as the third uncertain parameter. These conductances are known to be the most contributing to beat-to-beat variability [37]. All the other parameters were set to a fixed value using a calibration procedure. Many conductances values deviate a lot from their reference values which suggests that this step is necessary prior to any variability study. The estimated PDF shows that the large variability observed in the APD is in fact caused by small variations of the underlying parameters. These findings were confirmed by carrying out two other independent parameter estimations which yielded similar distributions for the conductances of interest. For g_{Ks} , the distribution differs when all the conductances are allowed to vary. This may be explained by the fact that this parameter is less identifiable compared to g_{Kr} , so that its effect may be compensated or may interfere with other conductances. Some limitations pertaining to the experimental set must be considered. Indeed, the isolation of cardiomyocytes is known to affect the membrane ionic channels [49] and therefore the distributions obtained for the conductances of interest may not reflect the *in vivo* ones. Furthermore, the experimental traces considered are just a snapshot of the cell at a certain state. Therefore, extrinsic factors operating at a long time

scale and contributing to variations of the AP features are neglected. For instance, monitoring the APD over the full experimental set reveals that there are long time scale increasing and decreasing trends in the APD (see the Supplementary Materials in [24]).

In Test Case 4, the OMM method is applied to an experimental set containing AP biomarkers obtained from two different populations: sinus rhythm (SR) and atrial fibrillation (AF). To each group is associated a most representative individual whose biomarkers values are the closest to the median ones of its group. The calibration step is very informative as it allows for a first comparison between the two groups, or more precisely between the two representatives of each group. The calibration leads to high differences for g_{K1} (+220%), g_{to} (-100%), g_{CaL} (-63%) and g_{Kur} (-60%) which are qualitatively similar to those reported in [41]. These differences between the two groups are also in agreement with the AF remodeling mechanisms documented in [5, 14, 27, 48]. The role of I_{Kur} seems to be prominent in the onset of AF [47] along with perturbations of the intracellular Ca^{2+} dynamics [46] which is coupled to the L-type calcium current I_{CaL} . Beyond these inter-group variations captured in the calibration step, the inter-group variability is revealed by the study of the estimated PDFs. The results highlight the distribution differences of g_{to} and g_{Kr} between the two groups. In the SR group, these two conductances feature a normal-like distribution that does not deviate much from the mean value whereas in the AF group those distributions are skewed and much more spread. The distribution of g_{Na} are similar between the two groups which suggests that it does not play an important role in the AF mechanisms. g_{K1} also features a much higher mean value and higher variance in the AF group. A posteriori distributions of the biomarkers of interest may be computed from the estimated PDF. When compared to the actual distributions (approximated by histograms of the experimental biomarkers), it shows that the OMM method succeeded in matching the variability in the measurements. In the future, studying other biomarkers or other types of measurements may lead to a better understanding of the AF mechanisms and of the sources of variability within each group.

We now discuss limitations concerning inverse problems in electrophysiology in general and the OMM method in particular. Akin to many inverse problem studies in electrophysiology, we make the assumption that all variability observed in the experimental data set can be explained by the variation of only a few conductances. Not only are there a large number of different conductances but there are also other parameters such as the parameters governing the dynamics of the channel gates. However, such a simplification is supported by two main considerations. First, the proposed approach is limited by its computational cost. Considering a large number of free parameters means that more samples are required to span the high-dimensional parameter space, which may be intractable in practice. Second, the information available in the AP traces is not enough to constrain all the model parameters. Adding other sources of information such as intracellular calcium concentrations revealed by fluorescence [43] or cell impedance [1] may allow the estimation of more than 6 parameters. Considering that, choosing the right set of varying conductances is still paramount.

The rationale for choosing the six conductances investigated in this work was based on their known importance in determining the cardiac action potential, and key properties including upstroke velocity, plateau duration, resting potential, and action potential duration. Amongst them, we included gKs knowing that due to the redundancy of currents during repolarization it would be expected to be poorly identifiable. Our method can however be extended to include variability in additional parameters if needed.

Another limitation comes from the experimental sets themselves. Cells coming from different regions of the heart exhibit different variability patterns in their APs. In the context of assessing the effect of a drug or investigating the causes of a heart disease, this approach should be repeated with a wider variety of cell locations. Furthermore, the electrical behavior of an isolated cell differs from one that is embedded in a tissue. Therefore, using measurements at the tissue scale [6] (for example using MEA measurements [7]) may yield results that are closer to the *in vivo* conditions.

Another point to be discussed is the use of biomarkers versus time traces. This is often imposed by the type of experimental data available. Ranges of biomarkers using standard protocols are easily accessed by experimentalists, and raw action potential data are not always available. It is therefore important to evaluate the use of both biomarker ranges and action potential traces. The set of available biomarkers is often dictated by experimental constraints. It is however possible, when there are many available biomarkers, to conduct a preliminary study to determine which biomarkers should be taken into account in order to recover certain parameters of interest. Such a study would consist in applying the proposed method several times with different underlying parameters variations. Then, for a given set of experimental constraints, it would be possible to assess whether the proposed method would be able to recover the underlying parameters distributions. Finally, the choice of numerical settings pertaining to the OMM method is discussed. The OMM method relies on the matching of the statistical moments of some observable quantities. The number of moments N_m to be matched is therefore important. In most

applications, choosing $N_m = 2$ or 3 is sufficient to capture the parameters distribution. A common heuristic is to increase N_m until no significant change in the estimated PDF is observed. Note that using high N_m often leads to numerical instability, all the more so if the noise level in the measurements is high.

In summary, we have presented a new method for estimating the PDF of action potential models parameters from various sets of AP measurements. The AP measurements may come in the form of waveforms (time series) or biomarkers. The method has been illustrated with both synthetic and experimental sets which exhibit both inter-subject and intra-subject variability. The approach we describe has potentially important implications in drug safety pharmacology and more generally in the understanding of variability in cardiomyocytes ionic properties. It intends to be in line with recent works suggesting that computational models are a powerful tool to evaluate drug toxicity [11]. More generally, the proposed approach may be a new way to investigate the sources of variability observed in electrophysiology that are experimentally difficult to assess.

Supplementary Material

S1 Table.1 Statistics summary of the estimated parameters from the Decker model in control conditions (no drug block).

S1 Table.2 Statistics summary of the estimated parameters from the Decker model in drug block conditions (90% block for I_{to} , I_{Kr} and I_{CaL}).

S1 Table.3 Statistics summary of the estimated parameters from the Decker model in control conditions with moments constraints from drug block estimation.

S1 Table.4 Statistics summary of the estimated parameters from the Courtemanche model in control conditions.

S1 Table.5 Statistics summary of the estimated parameters from the Courtemanche model at 2Hz pacing frequency.

S1 Table.6 Statistics summary of the estimated parameters from the Courtemanche model (combined 1Hz+2Hz data).

S1 Table.7 Davies model: experimental parameter calibration and observable moment matching results.

S1 Table.8 Human biomarkers dataset statistics.

S1 Table.9 Courtemanche model: experimental parameter calibration.

S1 Table.10 Statistics summary of the estimated parameters from the Courtemanche model with experimental data (SR and AF group), normalized by the reference values.

S1 Fig.1 L-curve of the calibration procedure by varying the regularization parameter K .

S1 Fig.2 Pair-wise biomarker products estimated marginal densities.

S1 Appendix A Illustration of the OMM method on a simple test case.

Authors' contributions

All authors equally contributed to this work.

Data accessibility

An online repository in open access ⁷ has been created to make available data and codes used in this paper.

Funding

BR is funded by a Wellcome Trust Senior Research Fellowship in Basic Biomedical Science(100246/Z/ 12/Z), the British Heart Foundation Centre of Research Excellence in Oxford (RE/13/1/30181), an NC3R Infrastructure for Impact award (NC/P001076/1), an EPSRC Impact Acceleration Award (EP/K503769/1), the ComBioMed project funded by the European Commission (grant agreement No 675451).

ET is funded by a doctoral grant from the French Ministry of Research and Higher Education.

⁷https://github.com/eltix/omm_jrsi

References

1. Yama A Abassi, Biao Xi, Nan Li, Wei Ouyang, Alexander Seiler, Manfred Watzele, Ralf Kettenhofen, Heribert Bohlen, Andreas Ehlich, Eugen Kolossov, et al. Dynamic monitoring of beating periodicity of stem cell-derived cardiomyocytes as a predictive tool for preclinical safety assessment. British journal of pharmacology, 165(5):1424–1441, 2012.
2. Stuart Barber, Jochen Voss, Mark Webster, et al. The rate of convergence for approximate bayesian computation. Electronic Journal of Statistics, 9(1):80–105, 2015.
3. Oliver J Britton, Alfonso Bueno-Orovio, Karel Van Ammel, Hua Rong Lu, Rob Towart, David J Gallacher, and Blanca Rodriguez. Experimentally calibrated population of models predicts and explains intersubject variability in cardiac cellular electrophysiology. Proceedings of the National Academy of Sciences, 110(23):E2098–E2105, 2013.
4. Fulong Chen, Angdi Chu, Xuefei Yang, Yao Lei, and Jizheng Chu. Identification of the parameters of the beeler–reuter ionic equation with a partially perturbed particle swarm optimization. IEEE Transactions on Biomedical Engineering, 59(12):3412–3421, 2012.
5. T Christ, E Wettwer, N Voigt, O Hala, S Radicke, K Matschke, A Varro, D Dobrev, and U Ravens. Pathology-specific effects of the ikur/ito/ik, ach blocker ave0118 on ion channels in human chronic atrial fibrillation. British journal of pharmacology, 154(8):1619–1630, 2008.
6. RH Clayton, Olivier Bernus, EM Cherry, Hans Dierckx, FH Fenton, L Mirabella, AV Panfilov, Frank B Sachse, G Seemann, and H Zhang. Models of cardiac tissue electrophysiology: progress, challenges and open questions. Progress in biophysics and molecular biology, 104(1):22–48, 2011.
7. Mike Clements and Nick Thomas. High-throughput multi-parameter profiling of electrophysiological drug effects in human embryonic stem cell derived cardiomyocytes using multi-electrode arrays. Toxicological Sciences, 140(2):445–461, 2014.
8. Scott D Cohen and Alan C Hindmarsh. Cvode, a stiff/nonstiff ode solver in c. Computers in physics, 10(2):138–143, 1996.
9. Marc Courtemanche, Rafael J Ramirez, and Stanley Nattel. Ionic mechanisms underlying human atrial action potential properties: insights from a mathematical model. American Journal of Physiology-Heart and Circulatory Physiology, 275(1):H301–H321, 1998.
10. Autumn A Cuellar, Catherine M Lloyd, Poul F Nielsen, David P Bullivant, David P Nickerson, and Peter J Hunter. An overview of cellml 1.1, a biological model description language. Simulation, 79(12):740–747, 2003.
11. Mark R Davies, Ken Wang, Gary R Mirams, Antonello Caruso, Denis Noble, Antje Walz, Thierry Lavé, Franz Schuler, Thomas Singer, and Liudmila Polonchuk. Recent developments in using mechanistic cardiac modelling for drug safety evaluation. Drug Discovery Today, 2016.
12. Mark Richard Davies, Hitesh Balvanta Mistry, Leyla Hussein, Chris E Pollard, Jean-Pierre Valentin, Jonathan Swinton, and Najah Abi-Gerges. An in silico canine cardiac midmyocardial action potential duration model as a tool for early drug safety assessment. American Journal of Physiology-Heart and Circulatory Physiology, 2011.
13. Keith F Decker, Jordi Heijman, Jonathan R Silva, Thomas J Hund, and Yoram Rudy. Properties and ionic mechanisms of action potential adaptation, restitution, and accommodation in canine epicardium. American Journal of Physiology-Heart and Circulatory Physiology, 296(4):H1017–H1026, 2009.
14. Dobromir Dobrev and Ursula Ravens. Remodeling of cardiomyocyte ion channels in human atrial fibrillation. Basic research in cardiology, 98(3):137–148, 2003.
15. Socrates Dokos and Nigel H Lovell. Parameter estimation in cardiac ionic models. Progress in biophysics and molecular biology, 85(2):407–431, 2004.

16. C. C. Drovandi, N. Cusimano, S. Psaltis, B. A. J. Lawson, A. N. Pettitt, P. Burrage, and K. Burrage. Sampling methods for exploring between-subject variability in cardiac electrophysiology experiments. Journal of The Royal Society Interface, 13(121), 2016.
17. Philip Gemmell, Kevin Burrage, Blanca Rodriguez, and T Alexander Quinn. Population of computational rabbit-specific ventricular action potential models for investigating sources of variability in cellular repolarisation. PLoS One, 9(2):e90112, 2014.
18. Jean-Frédéric Gerbeau, Damiano Lombardi, and Eliott Tixier. A moment-matching method to study the variability of phenomena described by partial differential equations. <https://hal.archives-ouvertes.fr/hal-01391254>, 2016.
19. Emmanuel Grenier, Violaine Louvet, and Paul Vigneaux. Parameter estimation in non-linear mixed effects models with saem algorithm: extension from ode to pde. ESAIM: Mathematical Modelling and Numerical Analysis, 48(5):1303–1329, 2014.
20. Nikolaus Hansen. The cma evolution strategy: a comparing review. In Towards a new evolutionary computation, pages 75–102. Springer, 2006.
21. Ben BCB Hui, Socrates Dokos, and Nigel H Lovell. Parameter identifiability of cardiac ionic models using a novel cellml least squares optimization tool. In 2007 29th Annual International Conference of the IEEE Engineering in Medicine and Biology Society, pages 5307–5310. IEEE, 2007.
22. Thomas J Hund and Yoram Rudy. Rate dependence and regulation of action potential and calcium transient in a canine cardiac ventricular cell model. Circulation, 110(20):3168–3174, 2004.
23. Edwin T Jaynes. Information theory and statistical mechanics. Physical review, 106(4):620, 1957.
24. Ross H Johnstone, Eugene TY Chang, Rémi Bardenet, Teun P De Boer, David J Gavaghan, Pras Pathmanathan, Richard H Clayton, and Gary R Mirams. Uncertainty and variability in models of the cardiac action potential: Can we build trustworthy models? Journal of molecular and cellular cardiology, 2015.
25. Jaspreet Kaur, Anders Nygren, and Edward J Vigmond. Fitting membrane resistance in single cardiac myocytes reduces variability in parameters. In Computing in Cardiology 2014, pages 209–212. IEEE, 2014.
26. Boris Ja Kogan. Introduction to computational cardiology: mathematical modeling and computer simulation. Springer Science & Business Media, 2009.
27. Jussi T Koivumäki, Gunnar Seemann, Mary M Maleckar, and Pasi Tavi. In silico screening of the key cellular remodeling targets in chronic atrial fibrillation. PLoS Comput Biol, 10(5):e1003620, 2014.
28. Phaedon-Stelios Koutsourelakis. A multi-resolution, non-parametric, bayesian framework for identification of spatially-varying model parameters. Journal of computational physics, 228(17):6184–6211, 2009.
29. Young-Seon Lee, Minki Hwang, Jun-Seop Song, Changyong Li, Boyoung Joung, Eric A Sobie, and Hui-Nam Pak. The contribution of ionic currents to rate-dependent action potential duration and pattern of reentry in a mathematical model of human atrial fibrillation. PloS one, 11(3):e0150779, 2016.
30. Daniel M Lombardo, Flavio H Fenton, Sanjiv M Narayan, and Wouter-Jan Rappel. Comparison of detailed and simplified models of human atrial myocytes to recapitulate patient specific properties. PLOS Comput Biol, 12(8):e1005060, 2016.
31. Ching-hsing Luo and Yoram Rudy. A dynamic model of the cardiac ventricular action potential. i. simulations of ionic currents and concentration changes. Circulation research, 74(6):1071–1096, 1994.
32. Eve Marder and Adam L Taylor. Multiple models to capture the variability in biological neurons and networks. Nature neuroscience, 14(2):133–138, 2011.

33. Anna Muszkiewicz, Oliver J Britton, Philip Gemmell, Elisa Passini, Carlos Sánchez, Xin Zhou, Annamaria Carusi, T Alexander Quinn, Kevin Burrage, Alfonso Bueno-Orovio, et al. Variability in cardiac electrophysiology: using experimentally-calibrated populations of models to move beyond the single virtual physiological human paradigm. Progress in biophysics and molecular biology, 120(1):115–127, 2016.
34. Sanjay Pant and Damiano Lombardi. An information-theoretic approach to assess practical identifiability of parametric dynamical systems. Mathematical biosciences, 268:66–79, 2015.
35. F. Pedregosa, G. Varoquaux, A. Gramfort, V. Michel, B. Thirion, O. Grisel, M. Blondel, P. Prettenhofer, R. Weiss, V. Dubourg, J. Vanderplas, A. Passos, D. Cournapeau, M. Brucher, M. Perrot, and E. Duchesnay. Scikit-learn: Machine learning in Python. Journal of Machine Learning Research, 12:2825–2830, 2011.
36. E Pueyo, CE Dangerfield, OJ Britton, L Virág, K Kistamás, N Szentandrásy, N Jost, A Varró, PP Nánási, K Burrage, et al. Experimentally-based computational investigation into beat-to-beat variability in ventricular repolarization and its response to ionic current inhibition. PloS one, 11(3):e0151461, 2016.
37. E Pueyo, CE Dangerfield, OJ Britton, L Virág, K Kistamás, N Szentandrásy, N Jost, A Varró, PP Nánási, K Burrage, et al. Experimentally-based computational investigation into beat-to-beat variability in ventricular repolarization and its response to ionic current inhibition. PloS one, 11(3):e0151461, 2016.
38. Ursula Ravens, Deniz Katircioglu-Öztürk, Erich Wettwer, Torsten Christ, Dobromir Dobrev, Niels Voigt, Claire Poulet, Simone Loose, Jana Simon, Agnes Stein, et al. Application of the rimarc algorithm to a large data set of action potentials and clinical parameters for risk prediction of atrial fibrillation. Medical & biological engineering & computing, 53(3):263–273, 2015.
39. Lucía Romero, Esther Pueyo, Martin Fink, and Blanca Rodríguez. Impact of ionic current variability on human ventricular cellular electrophysiology. American Journal of Physiology-Heart and Circulatory Physiology, 297(4):H1436–H1445, 2009.
40. Jeffrey S Rosenthal. Minorization conditions and convergence rates for markov chain monte carlo. Journal of the American Statistical Association, 90(430):558–566, 1995.
41. Carlos Sánchez, Alfonso Bueno-Orovio, Erich Wettwer, Simone Loose, Jana Simon, Ursula Ravens, Esther Pueyo, and Blanca Rodríguez. Inter-subject variability in human atrial action potential in sinus rhythm versus chronic atrial fibrillation. PloS one, 9(8):e105897, 2014.
42. Amrita X Sarkar and Eric A Sobie. Regression analysis for constraining free parameters in electrophysiological models of cardiac cells. PLoS Comput Biol, 6(9):e1000914, 2010.
43. Rami Shinnawi, Irit Huber, Leonid Maizels, Naim Shaheen, Amira Gepstein, Gil Arbel, Anke J Tijssen, and Lior Gepstein. Monitoring human-induced pluripotent stem cell-derived cardiomyocytes with genetically encoded calcium and voltage fluorescent reporters. Stem cell reports, 5(4):582–596, 2015.
44. Ilya M Sobol. Uniformly distributed sequences with an additional uniform property. USSR Computational Mathematics and Mathematical Physics, 16(5):236–242, 1976.
45. Z Syed, E Vigmond, S Nattel, and LJ Leon. Atrial cell action potential parameter fitting using genetic algorithms. Medical and Biological Engineering and Computing, 43(5):561–571, 2005.
46. David R Van Wagoner, Amber L Pond, Michelle Lamorgese, Sandra S Rossie, Patrick M McCarthy, and Jeanne M Nerbonne. Atrial l-type ca²⁺ currents and human atrial fibrillation. Circulation research, 85(5):428–436, 1999.
47. Erich Wettwer, Ottó Hála, Torsten Christ, Jürgen F Heubach, Dobromir Dobrev, Michael Knaut, Andrés Varró, and Ursula Ravens. Role of ikur in controlling action potential shape and contractility in the human atrium influence of chronic atrial fibrillation. Circulation, 110(16):2299–2306, 2004.
48. Mathias Wilhelms, Hanne Hettmann, Mary M Maleckar, Jussi T Koivumäki, Olaf Dössel, and Gunnar Seemann. Benchmarking electrophysiological models of human atrial myocytes. Front Physiol, 3:487, 2013.

49. LIXIA Yue, JIANLIN Feng, GR Li, and STANLEY Nattel. Transient outward and delayed rectifier currents in canine atrium: properties and role of isolation methods. American Journal of Physiology-Heart and Circulatory Physiology, 270(6):H2157–H2168, 1996.
50. Xin Zhou, Alfonso Bueno-Orovio, Michele Orini, Ben Hanson, Martin Hayward, Peter Taggart, Pier D Lambiase, Kevin Burrage, and Blanca Rodriguez. In vivo and in silico investigation into mechanisms of frequency dependence of repolarization alternans in human ventricular cardiomyocytes. Circulation research, 118(2):266–278, 2016.