



**HAL**  
open science

## Two-dimensional multi-heart cutting centrifugal partition chromatography–liquid chromatography for the preparative isolation of antioxidants from Edelweiss plant

Léa Marlot, Magali Batteau, Marie-Claire Escofet, Sylvie Nuccio, Véronique Coquoin, René de Vaumas, Karine Faure

### ► To cite this version:

Léa Marlot, Magali Batteau, Marie-Claire Escofet, Sylvie Nuccio, Véronique Coquoin, et al.. Two-dimensional multi-heart cutting centrifugal partition chromatography–liquid chromatography for the preparative isolation of antioxidants from Edelweiss plant. *Journal of Chromatography A*, 2017, 1504, pp.55-63. 10.1016/j.chroma.2017.04.056 . hal-01569418

**HAL Id: hal-01569418**

**<https://hal.science/hal-01569418>**

Submitted on 1 Sep 2020

**HAL** is a multi-disciplinary open access archive for the deposit and dissemination of scientific research documents, whether they are published or not. The documents may come from teaching and research institutions in France or abroad, or from public or private research centers.

L'archive ouverte pluridisciplinaire **HAL**, est destinée au dépôt et à la diffusion de documents scientifiques de niveau recherche, publiés ou non, émanant des établissements d'enseignement et de recherche français ou étrangers, des laboratoires publics ou privés.

# 1 Two-dimensional multi-heart cutting CPC-LC for the preparative isolation of antioxidants 2 from Edelweiss plant

3 Léa Marlot<sup>1</sup>, Magali Batteau<sup>1</sup>, Marie-Claire Escofet<sup>2</sup>, Sylvie Nuccio<sup>2</sup>, Véronique Coquoin<sup>2</sup>, René De  
4 Vaumas<sup>2</sup>, Karine Faure<sup>1</sup>

5 <sup>1</sup> Université de Lyon, CNRS, Université Claude Bernard Lyon 1, ENS de Lyon, Institut des Sciences  
6 Analytiques, UMR 5280, 5 rue de la Doua, F-69100 VILLEURBANNE, France

7 <sup>2</sup> Extrasynthese, Impasse Jacquard, F-69730 GENAY, France

8

9

## 10 Abstract

11 The Edelweiss plant has been recognized as a very valuable source of anti-aging principles due to its  
12 composition of antioxidants compounds: leontopodic acid A and 3,5-dicaffeoylquinic acid. In this work,  
13 off-line multi-heart cutting CPC-LC separation was set up at industrial scale in order to isolate and  
14 produce new high quality reference material of these two antioxidants from Edelweiss. For this  
15 purpose, CPC and HPLC methods were developed and optimized at laboratory scale and a  
16 comprehensive CPCxHPLC analysis of the crude extract was established. Thereby, the CPC method led  
17 to a first separation of the target compounds according to their partition coefficient in the solvent  
18 system and the HPLC method was performed on the recovered fractions to lead to a second separation.  
19 A 2D CPCxHPLC plot was established in order to know the fractions to select at the industrial scale.  
20 Then, the CPC and HPLC methods were transferred at industrial scale and the multi-heart cutting CPC-  
21 LC was performed in off-line mode. Using CPC with methyl ter-butyl ether-water 1:1 (v/v) solvent  
22 system and LC with Denali C18 column, 2 g of crude extract sample were injected and leontopodic acid  
23 A and 3,5-dicaffeoylquinic acid were recovered with purity over 97%. The compounds were identified  
24 by MS and NMR.

25

## 26 1. Introduction

27 *Leontopodium alpinum*, commonly known as Edelweiss, is one of the most famous plants of the  
28 European Alps. In folk medicine, extracts of Edelweiss are used for the therapy of abdominal aches,  
29 angina, bronchitis, cancer, diarrhea, dysentery and fever for humans as well as for livestock [1, 2].  
30 Indeed, this plant shows a wide diversity of secondary plant metabolites such as phenolic acids, lignans,  
31 flavonoids, sesquiterpenes, coumarins, benzofuran and others [3-5]. Wild Edelweiss is protected by  
32 the law but the plant is now cultivated in Switzerland and extracts of the aerial parts are used for their  
33 anti-oxidative properties [1, 3, 6]. From the early 2010's, the Edelweiss plant extracts have been  
34 recognized as a very valuable source of skin anti-aging principles by the cosmetic industry and the main  
35 actives substances are phenylpropanoids such as leontopodic acids [7, 8].

36 In order to improve clinical research and provide new high quality standards, the production of two  
37 antioxidants from Edelweiss plant is required, namely: leontopodic acid A and 3,5-dicaffeoylquinic  
38 acid. In recent years, Schwaiger et al. [9] and Ganzera et al. [10] developed different chromatographic  
39 methods for the identification and the quantification of major phenolic Edelweiss constituents such as  
40 high performance liquid chromatography and micellar electrokinetic capillary chromatography. The  
41 analysis exhibit the complexity of these plant extracts. However, currently no preparative assay of

42 these phenylpropanoids is available to isolate and produce the compounds of interest. As the plant  
43 extract is complex, the isolation of compounds using preparative HPLC cannot be considered.

44 For the isolation and production of phenolic compounds and phenylpropanoids from natural products,  
45 Countercurrent Chromatography (CCC) is widely used [11-14]. The countercurrent chromatography is  
46 a liquid chromatography technique that uses two immiscible liquid phases without any solid support.  
47 This technique eliminates irreversible adsorptive loss of samples onto the solid support matrix used in  
48 conventional chromatography and has the advantage to be versatile due to the huge choice of solvent  
49 combinations. With a loadable stationary phase, CCC is a very interesting preparative separation  
50 technique [15].

51 The purpose of the work is the purification and isolation of multiple targets from complex natural  
52 product. For this purpose, a complementarity of techniques was developed in order to combine two  
53 different selectivities through two different mechanisms of separation. A two-dimensional (2D)  
54 chromatography methodology coupling independent separation techniques provides higher peak  
55 capacity, resolution and selectivity. The countercurrent chromatography technique is set to be the first  
56 dimensional separation due to the loadable stationary phase. The HPLC technique, more efficient, is  
57 used as second dimensional separation. Several preparative applications using this strategy was  
58 reported in these recent years, especially in natural products field. The hyphenation can be on-line and  
59 comprehensive [16] with flow programming CCC [17], on-line and heart-cutting [18, 19] with stop-and-  
60 go CCC [20] or off-line and heart-cutting [21].

61 In the present study, an off-line multi-heart-cutting hyphenation of countercurrent chromatography  
62 using Centrifugal Partition Chromatography device (CPC) and preparative liquid chromatography was  
63 established in order to produce the two antioxidants from the Edelweiss extract. The CPC and HPLC  
64 methods were first developed separately at laboratory scale. Then the 2D hyphenation CPCxLC was  
65 performed off-line in a comprehensive mode at laboratory scale. Finally, the methods were transferred  
66 at industrial scale for the production of the two antioxidants by multi-heart-cutting CPC-LC meaning  
67 that only the fractions of interest were sent from the CPC to the second LC dimension.

68

## 69 **2. Experimental**

### 70 *2.1. Chemicals and materials*

71 All solvents used for the preparation of the sample, the HPLC analysis and the CPC separation were of  
72 analytical grade. Methyl ter-butyl ether was purchased from Acros Organics (Fisher Scientific, Illkirch,  
73 France). HPLC grade solvents for HPLC were purchased from Sigma-Aldrich (Saint-Quentin-Fallavier,  
74 France).

75 The extract of the aerial part of Edelweiss was provided by the company Extrasynthese (Genay,  
76 France). It had to be stored away from light at -20°C in a freezer to avoid any degradation. Leontopodic  
77 acid A and 3,5-dicaffeoylquinic acid authentic samples were provided by Prof. Schwaiger (Innsbruck  
78 University, Austria).

79

### 80 *2.2. Instrumentation*

81 All instruments used in this study are commercially available.

82 The CPC instrument employed at the laboratory scale was the FCPC-C from Kromaton Rousselet-  
83 Robatel (Annonay, France) with interchangeable columns (or rotors). The column had an exact volume  
84 of 34.5 ml. The apparatus was equipped with a Shimadzu preparative pump LC-20AP (Noisiel, France),  
85 a Shimadzu UV/VIS detector SPD-20A set up at 220 nm, a manual sample injection valve with a 350  $\mu$ L  
86 sample loop and a fraction collector. The rotor was thermostated at 21°C. The data were collected with  
87 Azur software provided by Datalys (Le Touvet, France).

88 The CPC instrument employed at industrial scale was the SCPC-1000 from Armen Instrument (Saint-  
89 Avé, France). The column had an exact volume of 1.088 liters. The apparatus was equipped with a Spot  
90 Prep II integrated system from Armen Instrument. This equipment is the assembly of a quaternary  
91 pump, an automatic sample injection valve fitted on a 20 ml sample loop, a UV/VIS spectrophotometer  
92 dual wavelength set up at 220 nm and 330 nm and a fraction collector. The Armen Glider Prep software  
93 installed in the integrated computer allowed the control of the apparatus and the data acquisition.

94 The HPLC system used at laboratory scale as second dimension was an Alliance 2690 system from  
95 Waters (Saint-Quentin-en-Yvelines, France) using a binary solvent delivery system, an autosampler and  
96 a Photodiode Array detector Waters 996 set up at 330 nm. A reversed-phase Grace Vydac Denali C18  
97 column (150 mm x 4.6 mm i.d., 5  $\mu$ m) was used as the second dimensional stationary phase. The data  
98 acquisition was performed by EmPower software from Waters.

99 The HPLC system used at preparative scale was composed of a Reveleris integrated system for  
100 injection, detection and collection, set up with 20 ml sample loop and a wavelength of 330 nm. A  
101 reversed-phase Grace Vydac Denali C18 column (300 mm x 50 mm i.d., 10  $\mu$ m) was used as the  
102 stationary phase.

103 All the analysis for the methods development and the fractions control were performed using an  
104 Acquity Ultra Performance Liquid Chromatography system from Waters. The system was equipped  
105 with a binary solvent delivery system, an autosampler and a Photodiode Array detector set up at 330  
106 nm. The data acquisition was performed by EmPower software from Waters. A reversed-phase Acquity  
107 UPLC CSH Phenyl-Hexyl column (100 mm x 2.1 mm i.d., 1.7  $\mu$ m) was used as stationary phase.

108

### 109 *2.3. Selection of CPC solvent system*

110 The solvent system was selected according to the partition coefficient ( $K_D$ ) of each target component  
111 to separate: leontopodic acid A et 3,5-dicaffeoylquinic acid. The  $K_D$  value was measured by HPLC  
112 analysis using the Shake-Flask methodology. A suitable amount of crude extract was added to a test  
113 tube and 2 ml of each of the equilibrated two-phase solvents was added. The tube was shaken  
114 vigorously to equilibrate the compounds between the two phases. After partition equilibrium the  
115 upper and lower phases were separately taken into vials and 20  $\mu$ L of each phase was analyzed by  
116 HPLC-UV. The peak area of the target compound in the upper phase was recorded as  $A_{\text{upper}}$  and the one  
117 in the lower phase as  $A_{\text{lower}}$ . The  $K_D$  value was calculated according to the following equation:  $K_D =$   
118  $A_{\text{upper}}/A_{\text{lower}}$ .

119

### 120 *2.4. Preparation of two-phase solvent system and sample solutions*

121 A two-phase solvent system composed of methyl ter-butyl ether-water pH 3 at a ratio of 1:1 (v/v) was  
122 developed. At the laboratory, according to the selected ratio, 1000 ml solvent system was thoroughly

123 equilibrated in 1 l bottle at room temperature for 10 min. At industrial scale, 8 l of solvent system was  
124 prepared in a 10 l bottle and directly used in CPC.

125 The sample solution for UHPLC analysis of crude extract was prepared by dissolving 10 mg of crude  
126 extract in 1 ml of water-acetonitrile 1:1 (v/v).

127 For the CPCxLC method development at laboratory scale, 1, 2, 20 and 50 mg of crude extract was  
128 dissolved in 1 ml of methyl ter-butyl ether. The solutions were vortexed for 4 min then sonicated for  
129 20 min and centrifuged for 20 min at 4000 rpm. The supernatant was taken and 350  $\mu$ l was injected.  
130 Finally, for the developed CPCxLC hyphenation at laboratory scale, the sample solution was prepared  
131 by dissolving 50 mg of crude extract in 1 ml of methyl ter-butyl ether. For the HPLC method  
132 development at laboratory scale, 10 mg of crude extract was dissolved in 2 ml of water-acetonitrile  
133 80:20 (v/v) and then filtrated.

134 For the CPC-LC hyphenation at industrial scale, the sample solution was prepared by dissolving 2 g of  
135 crude extract into 40 ml of total solvent system (1:1 v/v). The whole upper phase was injected in CPC  
136 which correspond to a 20 ml sample solution.

137

### 138 *2.5. Optimization of CPC separation at laboratory scale*

139 The CPC column was first filled with the upper phase as stationary phase. The rotation of the column  
140 was started at the minimum speed 600 rpm and gradually increased to 1720 rpm. The lower phase as  
141 mobile phase was pumped into the column at a flow-rate of 5 ml/min in descending mode, leading to  
142 a stationary phase volume ratio ( $S_f$ ) of 60%. When the hydrodynamic equilibrium was established in  
143 the column and the mobile phase started emerging in the effluent ( $P = 60$  bars), the sample solution  
144 was injected through the injection valve. The effluent was continuously monitored with a UV detector  
145 at 220 nm. The total run time was 40 min. The fractions were collected every minute with the fraction  
146 collector which correspond to a recovery of 40 fractions of 5 ml. All fractions were put in 1 ml vial for  
147 UHPLC analysis to identify peak compounds.

148

### 149 *2.6. Optimization of HPLC separation as second dimension*

150 A reversed-phase Grace Vydac Denali C18 column (150 mm x 4.6 mm i.d., 5  $\mu$ m) was used as the second  
151 dimensional stationary phase. This column was a strategic choice for the transfer at industrial scale.  
152 The mobile phase was composed of water-acetonitrile with 0.1% of formic acid under isocratic elution  
153 mode. The flow-rate of the mobile phase was 1 ml/min. All effluents trough the HPLC column were  
154 monitored by a PDA detector at 330 nm. Data for two-dimensional plots were processed with Matlab  
155 software.

156

### 157 *2.7. Transfer of off-line 2D CPC-LC separation to industrial scale*

158 The CPC column was first filled with the upper phase as stationary phase. The rotation of the column  
159 was performed at 900 rpm. The column was equilibrated by pumping a ratio of 60:40 (upper  
160 phase:lower phase v/v) of the system solvent at a flow-rate of 55 ml/min in descending mode. This  
161 solvent system introduction sets the stationary phase volume ratio at 60% while saving time and  
162 solvent consumption. When the hydrodynamic equilibrium was established in the column and the  
163 mobile phase started emerging in the effluent ( $P = 70$  bars), 20 ml of the sample solution was injected

164 through the injection valve. The effluent was continuously monitored with a UV detector at 220 nm  
165 and 330 nm. The total run time was 120 min. The fractions were collected every 0.41 minute with the  
166 fraction collector which correspond to a recovery of 287 fractions of 23 ml each.

167 The fractions corresponding to leontopodic acid A (compound B) were gathered from the middle of  
168 the rise to the middle of the descent of the peak. The same gathering was performed for 3,5-  
169 dicaffeoylquinic acid (compound A). Thereby two main fractions were recovered: one for leontopodic  
170 acid A called F1 (F1 = 450 mg) and one for 3,5-dicaffeoylquinic acid called F2 (F2 = 180 mg). The analysis  
171 of the fractions were carried out using UHPLC. The two recovered fractions F1 and F2, treated with  
172 acidic methyl ter-butyl ether and evaporated to dryness, were dissolved into 8 ml of the LC mobile  
173 phase to be sent to the second dimensional separation. A reversed-phase Grace Vydac Denali C18  
174 column (300 mm x 50 mm i.d., 10  $\mu$ m) was used as the stationary phase. The mobile phase was  
175 composed of water-acetonitrile with 0.1% of formic acid at a ratio of 75:25 (v/v) and 78:22 (v/v) under  
176 isocratic elution mode for leontopodic acid A and 3,5-dicaffeoylquinic acid fractions, respectively. The  
177 flow-rate of the mobile phase was 110 ml/min. All effluents through the HPLC column were monitored  
178 by a PDA detector at 220 nm and 330 nm. The total runs were 20 minutes.

179 The HPLC fractionation was determined in order to eliminate impurities in the head and the tail of the  
180 peaks. Two final fractions were recovered: the fraction F3 gathering the fractions of interest of  
181 leontopodic acid A peak (F3 = 298.5 mg) and the fraction F4 gathering the fractions of interest of 3,5-  
182 dicaffeoylquinic acid peak (F4 = 44.6 mg). The two final fractions, F3 and F4, were concentrated then  
183 extracted with acidic methyl ter-butyl ether and finally evaporated to dryness for UHPLC assessments.

184

#### 185 *2.8. UHPLC analysis of crude extract and purified fragments*

186 The crude Edelweiss extract sample, the fractions collected from the CPC separations during  
187 development, the two intermediate fractions F1 and F2 collected from industrial CPC and the final  
188 products from fractions F3 and F4 were analyzed using the Acquity Ultra Performance Liquid  
189 Chromatography system from Waters. The analysis were carried out on an Acquity UPLC CSH Phenyl-  
190 Hexyl column (100 mm x 2.1 mm i.d., 1.7  $\mu$ m) from Waters. The mobile phase used was water + 0.1%  
191 of formic acid (A) and acetonitrile + 0.1% of formic acid (B) in a gradient mode as following: B at 5% for  
192 0.29 min, B from 5% to 38% in 17.15 min, B at 38% for 0.52 min, B from 38 to 80% in 0.52 min, B at  
193 80% for 0.52 min, B from 80 to 5% in 0.52 min and B at 5% for 1.56 min. The total elution time was  
194 21.08 minutes. The flow-rate of the mobile phase was 0.4 ml/min and the effluents were monitored  
195 at 330 nm by a DAD detector.

196

#### 197 *2.9. Structure identification of components*

198 Identification of the compounds was carried out by ESI-MS in negative mode and  $^1\text{H}$ ,  $^{13}\text{C}$  NMR. For the  
199 ESI-MS analysis, the compounds were directly introduced in a SQ Detector 2 from Waters. For 3,5-  
200 dicaffeoylquinic acid, the MS measurements were made using a 0.85 kV capillary voltage, 47 V cone  
201 voltage and a source temperature of 500°C. For leontopodic acid A analysis, the MS measurements  
202 were made using a 2.02 kV capillary voltage, a 32 V cone voltage and a source temperature of 500°C.

203 A Bruker apparatus was used for 1D and 2D NMR identifications of the 3,5-dicaffeoylquinic acid ( $^1\text{H}$  set  
204 up at 400.13 MHz and  $^{13}\text{C}$  set up at 100.6 MHz) and the leontopodic acid A ( $^1\text{H}$  set up at 500.13 MHz  
205 and  $^{13}\text{C}$  set up at 125.77 MHz) recovered in  $\text{CD}_3\text{OD}$  for  $^1\text{H}$  identification and  $\text{D}_2\text{O}$  for  $^{13}\text{C}$  identification.

206

### 207 **3. Results and discussion**

208 The Edelweiss plant contains a lot of compounds which represents a complex matrix. In order to extract  
209 the compounds of interest from the plant according to the desired application, the crude sample  
210 undergo an extraction. Thus, the obtain extract is a simplified sample of the crude sample but still  
211 complex regarding the number of compounds and the close chemical structures. Thereby, whatever  
212 the extraction solvent, the crude extract remains complex and this complexity depends on the way the  
213 extraction is performed.

214

#### 215 *3.1. UHPLC analysis of the crude extract*

216 As shown in Fig. 1, the UHPLC analysis of the crude extract indicates that there are several minor  
217 compounds with some major compounds including the two compounds of interest. This  
218 chromatogram shows the complexity of the sample extract. The peaks are in the same time retention  
219 window which means that they have relatively close chemical structures. Furthermore, the resolution  
220 of the separation is sufficient for analytical purpose while method and column are optimized.  
221 Unfortunately the isolation of the compounds of interest by HPLC at preparative scale cannot be  
222 considered due to insufficient resolution on available preparative stationary phase.

223

224 [Here Fig. 1]

225

226 In order to increase the selectivity and the peak capacity, a first dimensional CPC separation was  
227 performed on the crude extract. This technique brings a different selectivity than HPLC and can  
228 separate compounds in first dimension that could not be separated in the second dimension.

229

#### 230 *3.2. Solvent system selection for first dimensional CPC separation*

231 Solute partition coefficient ( $K_D$ ) and retention of the stationary phase are important factors for the  
232 selection of the best solvent system to be implemented in CPC method. In literature, three main  
233 criteria have been developed in order to select the suitable solvent system for effective separations  
234 [22]. First, the partition coefficient of the compounds should be within the range of  $0.5 \leq K_D \leq 5$ . With  
235 values under 0.5, the separation resolution can be poor and with values over 5, there is a risk of band  
236 broadening. Then, the separation factor  $\alpha$  ( $\alpha = K_2/K_1$ ) should be greater than 1.5 to obtain an effective  
237 separation. And finally, the retention of the stationary phase should be high to improve the resolution  
238 of the separation. Due to the high polarity of the target compounds, a series of polar solvent systems  
239 were tested. Table 1 shows the partition coefficients of the two target compounds in the different  
240 solvent systems.

241

242 [Here Table 1]

243

244 The  $K_D$  values of the other compounds are really close to 0 for each test tube (data not shown) meaning  
245 that they are more soluble and have more partition in the mobile phase. Thus, the suitable solvent  
246 system should be the one in which target compounds have  $K_D$  values different from 0. The solvent  
247 system that meets the required specifications is methyl ter-butyl ether-water 1:1 (n°13) because the  
248 target compounds have  $K_D$  values in the suitable range and different from 0 and the separation factor  
249 is higher than 1.5.

250

### 251 *3.3. Optimization of CPC separation at laboratory scale*

252 Although the selection of the two-phase system is important, the flow-rate of the mobile phase and  
253 the rotation speed also play critical roles in the separation process, especially with regard to retention  
254 of the stationary phase. The lower phase was chosen as the mobile phase and was introduced through  
255 the column. The flow-rate of the mobile phase was set up at 5 ml/min and the rotation speed was  
256 performed at 1720 rpm. These optimized parameters were established to obtain the maximum  
257 stationary phase retention without reaching the maximum threshold pressure which was 75 bars. The  
258 solvent system methyl ter-butyl ether-water 1:1 generates a high pressure value due to the viscosity  
259 of methyl ter-butyl ether. With this solvent system, a stable retention of 60% stationary phase was  
260 obtained at 1720 rpm with a flow-rate of 5 ml/min providing a maximum pressure of 60 bars.

261

262

263 In order to inject the maximum amount of sample in CPC, the sample concentration was investigated.  
264 Different sample concentrations were tested for the CPC separation, from 1 mg/ml to 50 mg/ml. The  
265 injection volume was set up at 350  $\mu$ l which represents 1% of the column volume. This volume was  
266 found to be the compromise injection volume allowing the maximum volume injected while  
267 maintaining a satisfactory resolution. If the injection volume is higher, the resolution can be lower due  
268 to the peaks widening.

269 Chromatograms of CPC separations are shown in Fig. 2. For all separations, the quality of the  
270 separation is still conserved. The concentration value was finally raised to 50 mg/ml which was the  
271 sample solubility limit in the solvent. The chromatogram of the 50 mg/ml sample solution shows the  
272 conservation of the quality separation as well as the conservation of the selectivity between the peaks  
273 of interest while the return to baseline is not observed. This is not compulsory in two-dimensional  
274 separation as we will discuss later on. For optimized CPC parameters, the sample concentration was  
275 adjusted to 50 mg/ml.

276

277 [Here Fig. 2]

278

279 Through this investigation, CPC optimized parameters were settled as following: injection of 350  $\mu$ l of  
280 a 50 mg/ml centrifuged sample solution, on a methyl ter-butyl ether-water 1:1 (v/v) solvent system in  
281 descending mode, rotation speed at 1750 rpm, flow-rate at 5 ml/min. As presented in Fig. 2,  
282 leontopodic acid A elutes at 14.2 minutes which corresponds to  $K_D$  value around 2.8 and 3,5-  
283 dicaffeoylquinic acid elutes at 26.7 minutes which corresponds to  $K_D$  value around 5.8. These values  
284 are close to the expected values. The polar compounds, which had expected  $K_D$  values close to 0,  
285 correspond to the two first peaks in Fig. 2 and have shorter retention times than leontopodic acid A as



286 expected. It can be noticed that selectivity in CPC is different than in HPLC for the two compounds of  
287 interest since the elution order is switched as seen on Fig. 1 and Fig. 2.

288

### 289 *3.4. Development of HPLC separation as second dimension*

290 The second dimensional separation was performed on HPLC using Denali C18 column. This column was  
291 chosen for industrial reasons. Therefore, the Denali C18 column was employed at laboratory and  
292 industrial scales.

293 To develop this HPLC separation, two parameters were studied. The elution conditions were first  
294 investigated in order to optimize the separation and obtain a satisfied selectivity between compounds  
295 of interest without dispersed peaks. A volume of 5  $\mu\text{l}$  of extract sample was injected to test the mobile  
296 phase ratio of 75:25, 78:22 and 80:20 (v/v). Then, the injection volume of the sample was optimized  
297 by testing injection volumes of 20, 50 and 100  $\mu\text{l}$ .

298

#### 299 *3.4.1. Elution conditions*

300 The settled mobile phase was water + 0.1% of formic acid and acetonitrile + 0.1% of formic acid under  
301 isocratic elution. Three ratios of mobile phase were examined: 75:25, 78:22 and 80:20. The  
302 chromatograms are shown in Fig. 3. A satisfying separation as second dimensional separation is a  
303 separation which gives the desire selectivity while maintaining a satisfying efficiency. The ideal criteria  
304 are a separation factor between peaks  $\alpha$  higher than 1.5 and a peak width as small as possible to obtain  
305 resolute peaks. In order to transfer the separation at industrial scale, peaks had to be separated with  
306 high selectivity and require efficiency to be able to inject as much as possible and keep the return to  
307 baseline between them.

308 On the chromatogram corresponding to the 75:25 mobile phase ratio in Fig. 3, peaks show a very  
309 satisfying efficiency because the width of the peaks is really small. However, the selectivity between  
310 peaks around 3,5-dicaffeoylquinic acid peak is too low for satisfying separation because there is no  
311 return to baseline. The same observation is done for the leontopodic acid A peak. On the  
312 chromatogram corresponding to the 78:22 mobile phase ratio in Fig. 3, the same observations can be  
313 established even if the selectivity between peaks is a little higher but does not allow the baseline return  
314 of the signal between peaks. The 80:20 ratio of the mobile phase was also tested to observe the  
315 evolution of the resolution and the selectivity between peaks. As presented on the chromatogram in  
316 Fig. 3, peaks retention shows the best selectivity between the peaks. However, the efficiency of the  
317 separation is not satisfactory because the width of the target peaks is too high thus, when recovered,  
318 the compounds can be mixed with another compounds due to the large width of the peak and the  
319 compounds are dilute in a large volume of solvent. These conditions are not satisfactory conditions for  
320 preparative purpose. Thereby, the best compromise to carry out second dimensional HPLC is the use  
321 of 78:22 (v/v) mobile phase ratio. Indeed, the first dimensional CPC separation brings a first separation  
322 of the compounds with a larger selectivity than HPLC separation. Thus, the efficiency of the two  
323 methods are combined to offer a higher peak capacity. The return to baseline in separated methods is  
324 not compulsory for two-dimensional separation due to the efficiency combination. Both methods have  
325 to be a compromise for optimized parameters to satisfy the two-dimensional separation. Thereby, the  
326 optimized second dimensional HPLC was performed at a mobile phase ratio of 78:22 at laboratory  
327 scale.

328

329 [Here Fig. 3]

330

#### 331 *3.4.2. Injection volume for second dimension usage*

332 During method development it is necessary to be able to observe the behavior of compounds of  
333 interest as well as the neighboring impurities that may hinder their purification. Since CPC is a highly  
334 diluting process, it is hence required to transfer to the subsequent LC separation a sufficient amount  
335 of sample to monitor such impurities. Of course, at production scale, this concern does not apply as  
336 the whole selected CPC fraction will be treated on the LC column.

337 In order to observe the maximum signal on HPLC chromatogram, and thus, try to see the minor  
338 neighboring impurities of the compounds of interest, the CPC fraction containing the maximum  
339 amount of compounds was injected in HPLC. This fraction corresponds to the fraction eluting at 14.2  
340 minutes in Fig. 2, concentration at 50 mg/ml, which is the fraction of the peak top of leontopodic acid  
341 A. Then, three different injection volumes were tested: 20  $\mu$ l, 50  $\mu$ l and 100  $\mu$ l. The mobile phase was  
342 set up at a 75:25 ratio for a gain of time. Using an injection volume of 20  $\mu$ l gives a low peak intensity  
343 which is not interesting for the laboratory scale analysis because minor compounds are not observed.  
344 The injection volume of 100  $\mu$ l gives a high peak intensity which is high for the HPLC detector and a  
345 risk of signal saturation can occur. The injection volume of 50  $\mu$ l gives peak intensity high enough to  
346 hope to observe both peaks of interest and impurities. This HPLC injection volume was maintained for  
347 CPCxLC separation at laboratory scale.

348

#### 349 *3.5. Application of off-line 2D CPCxLC analysis at laboratory scale*

350 The optimized CPC and HPLC methods were carried out successively in a comprehensive way meaning  
351 that fractions from CPC separation were collected every 1 minute and later injected in HPLC for second  
352 dimensional separation (corresponding to a total of 40 HPLC analyses).

353 The first CPC dimension was set up with optimized conditions: methyl ter-butyl ether solvent system  
354 1:1 (v/v), flow-rate of 5 ml/min, rotation speed of 1720 rpm, sample extract of 50 mg/ml prepared by  
355 centrifugation and injection volume of 350  $\mu$ l. The second LC dimension on Denali C18 column was set  
356 up with optimized conditions: mobile phase of water + 0.1% of formic acid and acetonitrile + 0.1% of  
357 formic acid at a ratio of 78:22, injection volume of 50  $\mu$ l and flow-rate of 1 ml/min. The CPC  
358 chromatogram and the LC chromatograms of the fractions were recorded. The 2D CPCxLC analysis was  
359 plotted and the plot is shown in Fig. 4.

360 As seen on the figure, major compounds and minor compounds are present. This 2D plot allows the  
361 well-understanding of the crude extract sample composition. Moreover, as said previously and as  
362 expected, the efficiency of both methods are combined and the compounds can be separated through  
363 the two-dimensional separation.

364 The goal of this 2D CPCxLC plot is to allow to select the first-dimension fractions containing the target  
365 compounds that will be cut at industrial scale (blue squares on vertical chromatogram). The target  
366 compounds, 3,5-dicaffeoylquinic acid (compound A) and leontopodic acid A (compound B), are  
367 spotted on the map with the black squares. Then the corresponding fractions of interest to be  
368 recovered in CPC and HPLC dimensions could be determined. Therefore, the cut of the target fractions  
369 in the first dimensional CPC separation for industrial scale was decided through this map in order to  
370 eliminate the impurities which could hinder the recuperation of the target compounds in second

371 dimensional HPLC separation. The collected fractionation in both dimensions was shown on Fig. 4  
372 through the dotted lines.

373

374 [Here Fig. 4]

375

### 376 *3.6. Transfer of off-line 2D CPC-LC separation to industrial scale*

377 The CPC and HPLC methods were transferred at industrial scale. For first dimensional CPC separation,  
378 the method transfer was made on a 1 l rotor. The solvent system was the same methyl ter-butyl ether-  
379 water 1:1 (v/v) solvent system. The flow-rate of the mobile phase and the rotation speed were  
380 optimized to maintain the same separation quality. Due to pressure limitation, the maximum rotation  
381 speed reached was 900 rpm with a maximum flow-rate of 55 ml/min using a forced stationary phase  
382 volume ratio of 60%. This compromise was chosen to obtain the higher efficiency with the shorter  
383 elution time.

384 The maximum charge was examined and was limited by the solubility of the sample in the upper phase  
385 of the solvent system. During the CPC run, the eluent was collected and fractionated every 0.41  
386 minute. These fractions from the first dimensional CPC separation were gathered in two main fractions  
387 as shown in Fig. 5 (vertical chromatogram). Two fractions were recovered from first dimension: one  
388 fraction of leontopodic acid A called F1 and one fraction of 3,5-dicaffeoylquinic acid called F2. These  
389 two fractions were sent to second dimensional LC separation after concentration, extraction and  
390 evaporation.

391 In order to save solvent and time consumption, LC separation of F1 was accelerated by increasing the  
392 eluent strength of the mobile phase. Thus the second dimensional LC separation for leontopodic acid  
393 A fraction was carried out with a mobile phase ratio of 75:25 (v/v), as opposed to 78:22 (v/v) during  
394 method development. Consequently, the impurities present on Fig. 4 before leontopodic acid A  
395 (retention times of 5.5 min and 6.5 min on HPLC axis) are coeluted under the peak eluting at 8.5 min  
396 on Fig. 5. The impurities present on Fig.4 after leontopodic acid A (retention time of 10 min on HPLC  
397 axis) are in the tail of leontopodic acid A peak on Fig. 5.

398 For the 3,5-dicaffeoylquinic acid fraction, as the neighboring impurities are very close to the peak of  
399 interest, the second dimensional LC separation was carried out with the initially selected mobile phase  
400 ratio of 78:22 (v/v). Final fractions, F3 and F4, were recovered as shown in Fig. 5 (horizontal  
401 chromatogram) by eliminating the tail and the end of the peaks of interest to recover compound with  
402 a high purity value.[Here Fig. 5]

403 Indeed, the purity of the two target compounds is higher than 97% (estimated purity with peak area).  
404 The chemical structures of those isolated compounds were identified as 3,5-dicaffeoylquinic acid and  
405 leontopodic acid A by ESI-MS in negative mode and NMR [6, 23, 24] (MS and NMR spectra provided in  
406 Supplementary Information). 3,5-dicaffeoylquinic acid was clearly identified through its ion  $[M-H]^-$   
407  $m/z=514.99$  and its ion fragment  $[M-H]^- - C_9H_6O_3$   $m/z=353.01$ . Moreover, the NMR spectra are coherent  
408 with the known structure. Similarly, leontopodic acid A identity was confirmed through its ion  $[M-$   
409  $H]^-$   $m/z=781.28$  and its ion fragments  $[M-H]^- - C_9H_6O_3$   $m/z=619.13$  and  $[M-H]^- - 2xC_9H_6O_3$   $m/z=457.07$ .  
410 Moreover, the NMR spectra are coherent with the known structure.

411 From a 2g crude extract containing 172.5 mg of 3,5-dicaffeoylquinic acid and 345.9 mg of leontopodic  
412 acid A, the CPC-LC process leads to a 3,5-dicaffeoylquinic acid fraction (44.6 mg, purity of 97%) and a

413 leontopodic acid A fraction (298.5 mg, purity of 97%). Because of the purity specifications thus a strict  
414 selection of fractionation, the recovery is low (25.1% for 3,5-dicaffeoylquinic acid and 83.7% for  
415 leontopodic acid A). The overall 2D CPC-LC process is able to produce new reference materials at a  
416 yield of 22mg/g of crude extract for 3,5-dicaffeoylquinic acid and 145mg/g of crude extract for  
417 leontopodic acid A.

#### 418 **4. Conclusion**

419 In this work, a 2D comprehensive CPCxHPLC protocol was designed at laboratory scale to enhance  
420 capability and resolving power for the separation of Edelweiss plant extract. This protocol allowed to  
421 implement a multi-heart-cutting CPC-HPLC at industrial scale for the purification and the isolation of  
422 two antioxidants from Edelweiss plant extract as new reference materials. The CPC and HPLC methods  
423 were developed in parallel at laboratory scale and the off-line hyphenation was successfully performed  
424 to identify the antioxidants. Both methods were transferred at industrial scale and the separation  
425 quality was maintained. The CPC-LC protocol was successfully performed at industrial scale. A recovery  
426 of 83.7% and 25.1% were obtained for leontopodic acid A and 3,5-dicaffeoylquinic acid compounds,  
427 respectively, with a purity higher than 97%. The structures of the isolated compounds were confirmed  
428 by MS and 1D and 2D NMR.

429 To the best of our knowledge, this is the first report using the combination of CPC and HPLC for the  
430 production of leontopodic acid A and 3,5-dicaffeoylquinic acid. These compounds were simultaneously  
431 isolated at preparative scale for the first time.

432 The above results show that this off-line CPC-LC protocol is an effective and high-purity technique  
433 which has potential applications in preparative extraction and purification of multiple target  
434 components from complex natural products.

435

#### 436 **Associated content**

437 Supporting Information: MS and NMR data mentioned in the text are available as supplementary data.

#### 438 **Acknowledgment**

439 We greatly acknowledge Prof. Schwaiger (Innsbruck University, Austria) for the providing of authentic  
440 samples and Edelweiss plant and Mrs Baudoin (CPE Lyon) for her help on NMR identification.

441

#### 442 **References**

- 443 [1] M.J. Dobner, S. Schwaiger, I.H. Jenewein, H. Stuppner, Antibacterial activity of *Leontopodium*  
444 *alpinum* (Edelweiss), *Journal of Ethnopharmacology*, 89 (2003) 301-303.  
445 [2] S. Schwaiger, M. Adams, C. Seger, E.P. Ellmerer, R. Bauer, H. Stuppner, New constituents of  
446 *Leontopodium alpinum* and their in vitro leukotriene biosynthesis inhibitory activity *Planta medica*,  
447 70 (2004) 978-985.  
448 [3] M.J. Dobner, S. Sosa, S. Schwaiger, G. Altinier, R. Della Loggia, N.C. Kaneider, H. Stuppner, Anti-  
449 inflammatory activity of *Leontopodium alpinum* and its constituents *Planta medica*, 70 (2004) 502-  
450 508.  
451 [4] M. Dobner, J., E. Ellmerer, P., S. Schwaiger, O. Batsugkh, S. Narantuya, M. Stütz, H. Stuppner, New  
452 Lignan, Benzofuran, and Sesquiterpene Derivatives from the Roots of *Leontopodium alpinum* and *L.*  
453 *leontopodioides*, *Helvetica Chimica Acta*, 86 (2003) 733.

454 [5] S. Schwaiger, S. Hehenberger, E.P. Ellmerer, H. Stuppner, A new Bisabolane Derivative of  
455 *Leontopodium andersonii*, Natural product communications, 5 (2010) 667-668.

456 [6] S. Schwaiger, R. Cervellati, C. Seger, E.P. Ellmerer, N. About, I. Renimel, C. Godenir, P. André, F.  
457 Gafner, H. Stuppner, Leontopodic acid—a novel highly substituted glucaric acid derivative from  
458 Edelweiss (*Leontopodium alpinum* Cass.) and its antioxidative and DNA protecting properties,  
459 Tetrahedron, 61 (2005) 4621-4630.

460 [7] L. Daniela, P. Alla, R. Maurelli, D. Elena, P. Giovanna, K. Vladimir, D.T. Roberto, D.L. Chiara, P.  
461 Saveria, K. Liudmila, Anti-Inflammatory Effects of Concentrated Ethanol Extracts of Edelweiss  
462 (*Leontopodium alpinum* Cass.) Callus Cultures towards Human Keratinocytes and Endothelial Cells,  
463 Mediators of Inflammation, 2012 (2012) 498373.

464 [8] S. Costa, S. Schwaiger, R. Cervellati, H. Stuppner, E. Speroni, M.C. Guerra, In vitro evaluation of  
465 the chemoprotective action mechanisms of leontopodic acid against aflatoxin B1 and deoxynivalenol-  
466 induced cell damage, Journal Of Applied Toxicology: JAT, 29 (2009) 7-14.

467 [9] S. Schwaiger, C. Seger, B. Wiesbauer, P. Schneider, E.P. Ellmerer, S. Sturm, H. Stuppner,  
468 Development of an HPLC-PAD-MS assay for the identification and quantification of major phenolic  
469 edelweiss (*Leontopodium alpinum* Cass.) constituents, Phytochemical Analysis, 17 (2006) 291-298.

470 [10] M. Ganzera, V. Greifeneder, S. Schwaiger, H. Stuppner, Chemical profiling of Edelweiss  
471 (*Leontopodium alpinum* Cass.) extracts by micellar electrokinetic capillary chromatography,  
472 Fitoterapia, 83 (2012) 1680-1686.

473 [11] C. Yang, Q. Tang, J. Liu, Z. Zhang, W. Liu, Preparative isolation and purification of phenolic acids  
474 from Smilax china by high-speed counter-current chromatography, Separation & Purification  
475 Technology, 61 (2008) 474-478.

476 [12] H.E. Dajun, G.U. Dongyu, H. Yun, A. Ayupbek, Y. Yi, A. Haji Akber, Y. Ito, Separation and  
477 Purification of Phenolic Acids and Myricetin from Black Currant by High-Speed Countercurrent  
478 Chromatography Journal of liquid chromatography & related technologies, 32 (2009) 3077-3088.

479 [13] W.U. Hao, F. Ruihong, G. Shuguang, Y.U. Wenbo, M.A.N. Wei, G.U.O. Jiling, L.I.U. Xuan, Y. Min, J.  
480 Baohong, W.U. Wanying, Z. Lianxue, G. Shuhong, G.U.O. Dean, Rapid preparative isolation of a new  
481 phenylpropanoid glycoside and four minor compounds from Sparganium stoloniferum using high-  
482 speed counter-current chromatography as a fractionation tool, Journal of separation science, 35  
483 (2012) 1160-1166.

484 [14] F.-Y. Li, Z.-P. Gou, X.-C. Ma, T. Yan, T. Ge, C.-Y. Wang, D.-H. Su, L.I.U. Ke Xin, X.-L. Xin, Preparative  
485 Isolation and Purification of Two Phenylpropanoids from *Daphne giraldii Nitsche* by HSCCC  
486 Chromatographia 71 (2010) 481-485.

487 [15] A. Berthod, T. Maryutina, B. Spivakov, O. Shpigun, I.A. Sutherland, Countercurrent  
488 chromatography in analytical chemistry: (IUPAC Technical Report), Pure and Applied Chemistry,  
489 (2009) 355.

490 [16] D. Wang, L.-J. Chen, J.-L. Liu, X.-Y. Wang, Y.-L. Wu, M.-J. Fang, Z. Wu, Y.-K. Qiu, On-line two-  
491 dimensional countercurrent chromatography × high performance liquid chromatography system with  
492 a novel fragmentary dilution and turbulent mixing interface for preparation of coumarins from  
493 *Cnidium monnieri*, Journal of Chromatography A, 1406 (2015) 215-223.

494 [17] Y.-K. Qiu, X. Yan, M.-J. Fang, L. Chen, Z. Wu, Y.-F. Zhao, Two-dimensional countercurrent  
495 chromatography × high performance liquid chromatography for preparative isolation of toad venom,  
496 Journal of Chromatography A, 1331 (2014) 80-89.

497 [18] T. Michel, E. Destandau, L. Fougère, C. Elfakir, New 'hyphenated' CPC-HPLC-DAD-MS strategy for  
498 simultaneous isolation, analysis and identification of phytochemicals: application to xanthenes from  
499 *Garcinia mangostana*, Analytical & Bioanalytical Chemistry, 404 (2012) 2963-2972.

500 [19] T. Michel, E. Destandau, C. Elfakir, On-line hyphenation of centrifugal partition chromatography  
501 and high pressure liquid chromatography for the fractionation of flavonoids from *Hippophaë*  
502 *rhamnoides* L. berries, Journal of Chromatography A, 1218 (2011) 6173-6178.

503 [20] J.-L. Liu, X.-Y. Wang, L.-L. Zhang, M.-J. Fang, Y.-L. Wu, Z. Wu, Y.-K. Qiu, Two-dimensional  
504 countercurrent chromatography × high performance liquid chromatography with heart-cutting and

505 stop-and-go techniques for preparative isolation of coumarin derivatives from *Peucedanum*  
506 *praeruptorum* Dunn, Journal of Chromatography A, 1374 (2014) 156-163.  
507 [21] D. Chen, J. Fan, P. Wang, L. Zhu, Y. Jin, Y. Peng, S. Du, Isolation, identification and antioxidative  
508 capacity of water-soluble phenylpropanoid compounds from *Rhodiola crenulata*, Food Chemistry,  
509 134 (2012) 2126-2133.  
510 [22] Y. Ito, Golden rules and pitfalls in selecting optimum conditions for high-speed counter-current  
511 chromatography, Journal of Chromatography A, 1065 (2005) 145-168.  
512 [23] R. Grassi-Zampieron, L.V. França, C.A. Carollo, M.d.C. Vieira, A. Oliveros-Bastidas, J.M.d. Siqueira,  
513 Comparative profiles of *Achyrocline alata* (Kunth) DC. and *A. satureioides* (Lam.) DC., *Asteraceae*,  
514 applying HPLC-DAD-MS, Revista Brasileira de Farmacognosia, 20 (2010) 575-579.  
515 [24] E.J. Lee, J.S. Kim, H.P. Kim, J.-H. Lee, S.S. Kang, Phenolic constituents from the flower buds of  
516 *Lonicera japonica* and their 5-lipoxygenase inhibitory activities, Food Chemistry, 120 (2010) 134-139.  
517

518 **Figure captions**

519

520 Fig. 1. UHPLC analysis of the crude extract (10 g/l) on Phenyl-Hexyl column (100 mm x 2.1 mm i.d., 1.7  
521  $\mu\text{m}$ ), mobile phase of water + 0.1% of formic acid and acetonitrile + 0.1% of formic acid in gradient  
522 mode, flow-rate at 0.4 ml/min, detection at 330 nm. Peaks A: 3,5-dicaffeoylquinic acid; B: leontopodic  
523 acid A.

524 Fig. 2. CPC chromatograms of the crude extract solution (2, 20, 50 mg/ml in upper phase). Methyl ter-  
525 butyl ether-water 1:1 (v/v) solvent system, flow-rate at 5 ml/min, 1720 rpm, detection at 220 nm.  
526 Peaks A: 3,5-dicaffeoylquinic acid; B: leontopodic acid A.

527 Fig. 3. HPLC chromatograms of the crude extract (5 g/l) on Grace Vydac Denali C18 column (150 mm x  
528 4.6 mm i.d., 5  $\mu\text{m}$ ), mobile phase of water + 0.1% of formic acid and acetonitrile + 0.1% of formic acid  
529 under isocratic elution at a ratio of 75:25, 78:22 or 80:20 (v/v), injection volume of 5  $\mu\text{l}$ , flow-rate at 1  
530 ml/min and detection at 330 nm. Peaks A: 3,5-dicaffeoylquinic acid; B: leontopodic acid A.

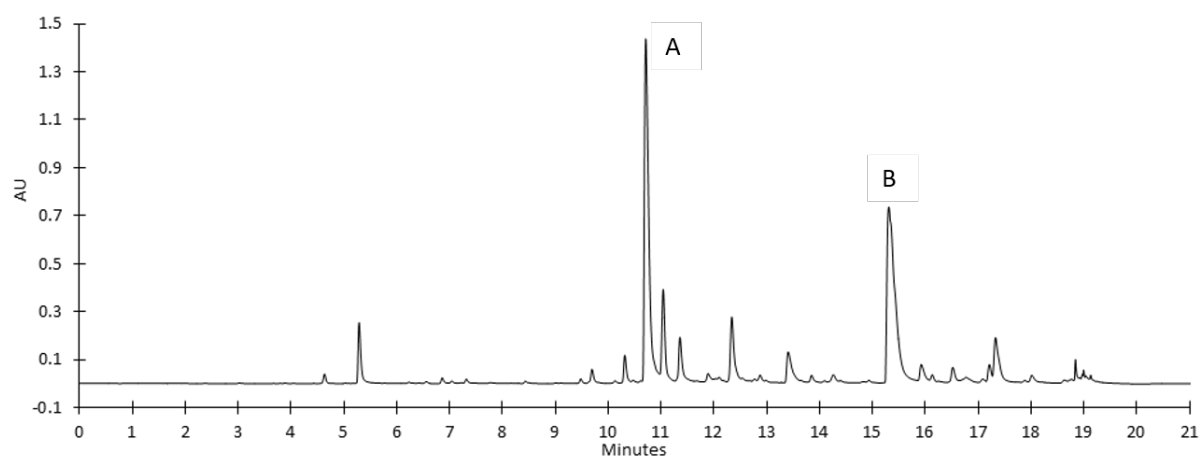
531 Fig. 4. 2D plot of the CPCxLC analysis of the crude extract. CPC parameters: 50 mg/ml centrifuged  
532 extract sample, injection volume of 350  $\mu\text{l}$ , methyl ter-butyl ether 1:1 (v/v) solvent system, flow-rate  
533 of 5 ml/min, 1720 rpm and detection at 220 nm. LC parameters: Grace Vydac Denali C18 column (150  
534 mm x 4.6 mm i.d., 5  $\mu\text{m}$ ), mobile phase of water + 0.1% of formic acid and acetonitrile + 0.1% of formic  
535 acid (78:22 v/v), injection volume of 50  $\mu\text{l}$ , flow-rate of 1 ml/min and detection at 330 nm. Peaks A:  
536 3,5-dicaffeoylquinic acid; B: leontopodic acid A.

537 Fig. 5. Industrial CPC-LC separation of Edelweiss crude extract. CPC protocol: methyl ter-butyl ether  
538 solvent system 1:1 (v/v), 2 g of crude extract in 40 ml of solvent system (1:1), injection of upper  
539 phase, flow-rate of 55 ml/min, 900 rpm and detection at 220 nm. LC protocol: Grace Vydac Denali  
540 C18 column (300 mm x 50 mm i.d., 10  $\mu\text{m}$ ), mobile phase of water-acetonitrile with 0.1% of formic  
541 acid at 75:25 (v/v) for F1 fraction and 78:22 (v/v) for F2 fraction, flow-rate of 110 ml/min, detection  
542 at 330 nm.

543

544

545



546

547 Fig. 1. UHPLC analysis of the crude extract (10 g/l) on Phenyl-Hexyl column (100 mm x 2.1 mm i.d., 1.7  
548  $\mu\text{m}$ ), mobile phase of water + 0.1% of formic acid and acetonitrile + 0.1% of formic acid in gradient  
549 mode, flow-rate at 0.4 ml/min, detection at 330 nm. Peaks A: 3,5-dicaffeoylquinic acid; B: leontopodic  
550 acid A.

551

552

553

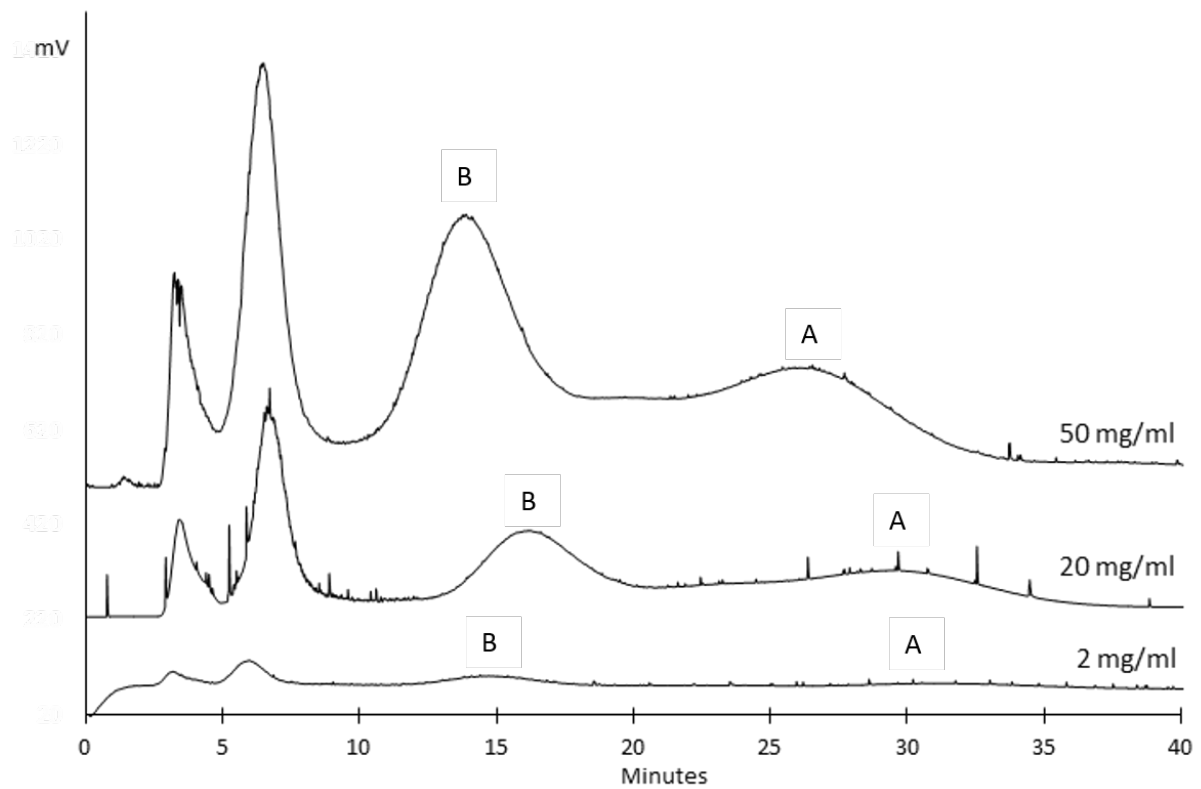
554

555

556

557





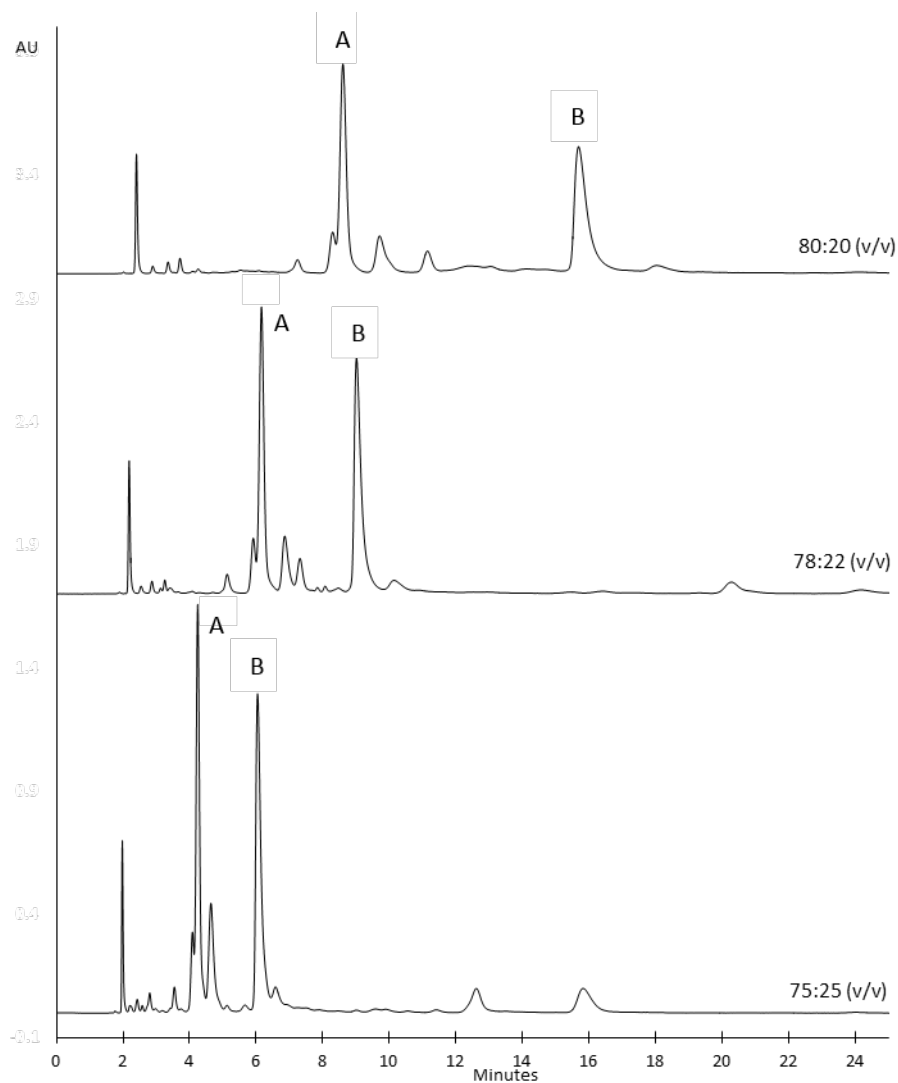
558

559 Fig. 2. CPC chromatograms of the crude extract solution (2, 20, 50 mg/ml in upper phase). Methyl ter-  
 560 butyl ether-water 1:1 (v/v) solvent system, flow-rate at 5 ml/min, 1720 rpm, detection at 220 nm.  
 561 Peaks A: 3,5-dicaffeoylquinic acid; B: leontopodic acid A.

562

563

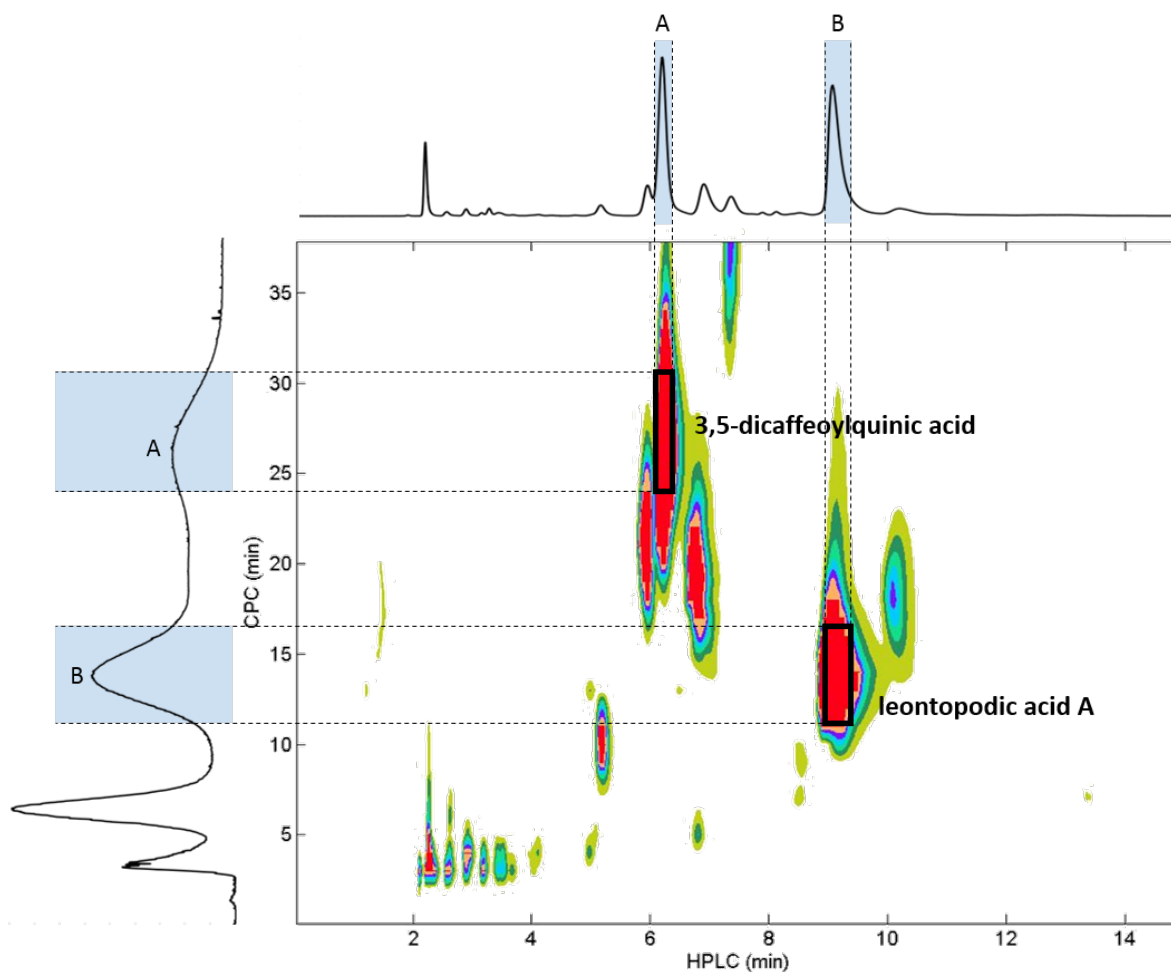
564



565

566 Fig. 3. HPLC chromatograms of the crude extract (5 g/l) on Grace Vydac Denali C18 column (150 mm x  
 567 4.6 mm i.d., 5  $\mu$ m), mobile phase of water + 0.1% of formic acid and acetonitrile + 0.1% of formic acid  
 568 under isocratic elution at a ratio of 75:25, 78:22 or 80:20 (v/v), injection volume of 5  $\mu$ l, flow-rate at 1  
 569 ml/min and detection at 330 nm. Peaks A: 3,5-dicaffeoylquinic acid; B: leontopodic acid A.

570



571

572 Fig. 4. 2D plot of the CPCxLC analysis of the crude extract. CPC parameters: 50 mg/ml centrifuged  
 573 extract sample, injection volume of 350  $\mu$ l, methyl ter-butyl ether 1:1 (v/v) solvent system, flow-rate  
 574 of 5 ml/min, 1720 rpm and detection at 220 nm. LC parameters: Grace Vydac Denali C18 column (150  
 575 mm x 4.6 mm i.d., 5  $\mu$ m), mobile phase of water + 0.1% of formic acid and acetonitrile + 0.1% of formic  
 576 acid (78:22 v/v), injection volume of 50  $\mu$ l, flow-rate of 1 ml/min and detection at 330 nm. Peaks A:  
 577 3,5-dicaffeoylquinic acid; B: leontopodic acid A.

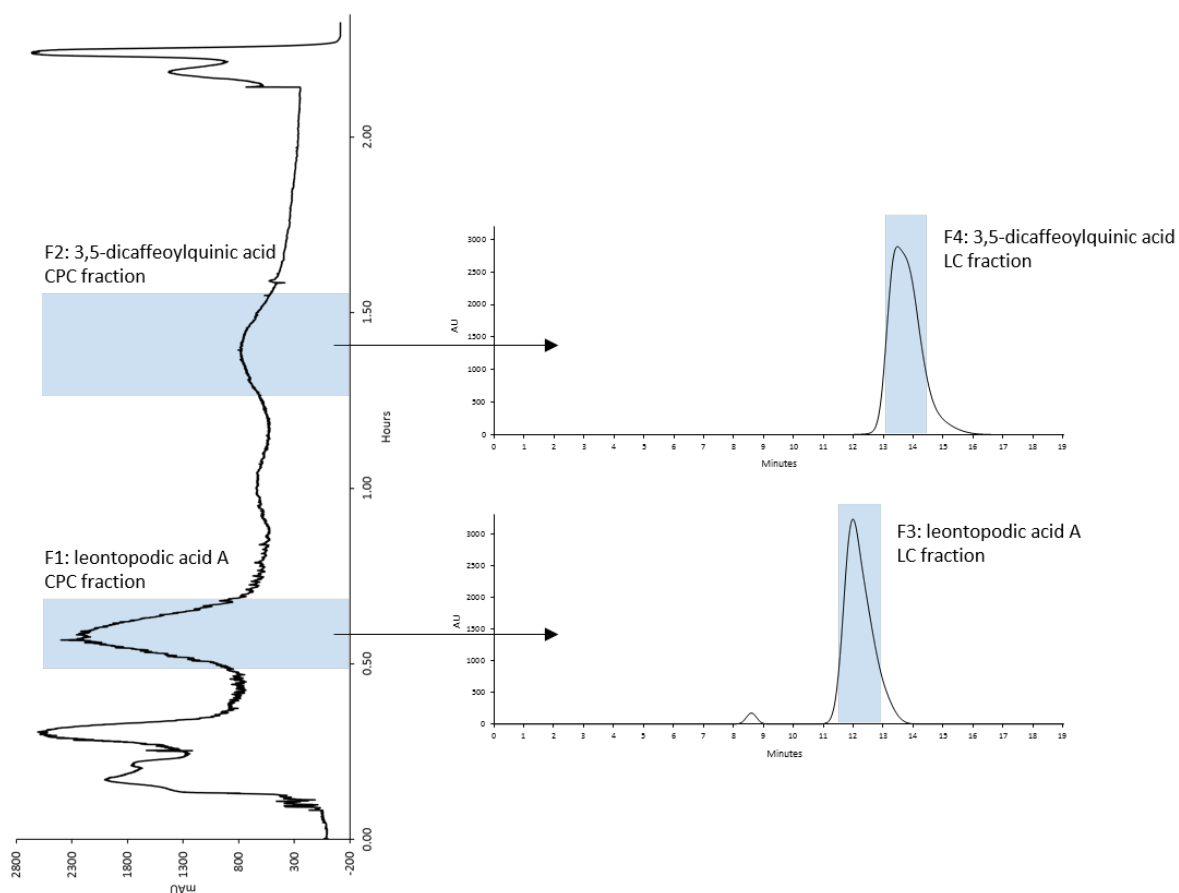
578

579

580

1<sup>st</sup> dimensional CPC

2<sup>nd</sup> dimensional LC



581

582 Fig. 5. Industrial CPC-LC separation of Edelweiss crude extract. CPC protocol: methyl ter-butyl ether  
583 solvent system 1:1 (v/v), 2 g of crude extract in 40 ml of solvent system (1:1), injection of upper phase,  
584 flow-rate of 55 ml/min, 900 rpm and detection at 220 nm. LC protocol: Grace Vydac Denali C18 column  
585 (300 mm x 50 mm i.d., 10  $\mu$ m), mobile phase of water-acetonitrile with 0.1% of formic acid at 75:25  
586 (v/v) for F1 fraction and 78:22 (v/v) for F2 fraction, flow-rate of 110 ml/min, detection at 330 nm.

587

588

589