



**HAL**  
open science

## A high-precision chronological model for the decorated Upper Paleolithic cave of Chauvet-Pont d'Arc, Ardèche, France

Anita Quiles, H el ene Valladas, Herv e Bocherens, Emmanuelle Delque-Koli c, Evelyne Kaltnecker, Johannes van Der Plicht, Jean-Jacques Delannoy, Val erie Feruglio, Carole Fritz, Julien Monney, et al.

### ► To cite this version:

Anita Quiles, H el ene Valladas, Herv e Bocherens, Emmanuelle Delque-Koli c, Evelyne Kaltnecker, et al.. A high-precision chronological model for the decorated Upper Paleolithic cave of Chauvet-Pont d'Arc, Ard eche, France. *Proceedings of the National Academy of Sciences of the United States of America*, 2016, 113 (17), pp.4670-4675. 10.1073/pnas.1523158113 . hal-01568508

**HAL Id: hal-01568508**

**<https://hal.science/hal-01568508v1>**

Submitted on 15 Aug 2024

**HAL** is a multi-disciplinary open access archive for the deposit and dissemination of scientific research documents, whether they are published or not. The documents may come from teaching and research institutions in France or abroad, or from public or private research centers.

L'archive ouverte pluridisciplinaire **HAL**, est destin ee au d ep ot et  a la diffusion de documents scientifiques de niveau recherche, publi es ou non,  emanant des  tablissements d'enseignement et de recherche fran ais ou  trangers, des laboratoires publics ou priv es.



Distributed under a Creative Commons Attribution 4.0 International License

# A high-precision chronological model for the decorated Upper Paleolithic cave of Chauvet-Pont d'Arc, Ardèche, France

Anita Quiles<sup>a,b,1</sup>, Hélène Valladas<sup>b</sup>, Hervé Bocherens<sup>c,d</sup>, Emmanuelle Delqué-Kolitz<sup>e</sup>, Evelyne Kaltnecker<sup>b</sup>, Johannes van der Plicht<sup>f,g</sup>, Jean-Jacques Delannoy<sup>h</sup>, Valérie Feruglio<sup>i</sup>, Carole Fritz<sup>j,k</sup>, Julien Monney<sup>h</sup>, Michel Philippe<sup>l</sup>, Gilles Tosello<sup>j</sup>, Jean Clottes<sup>m</sup>, and Jean-Michel Geneste<sup>n</sup>

<sup>a</sup>Institut Français d'Archéologie Orientale, Pôle Archéométrie, 11441 Cairo, Egypt; <sup>b</sup>Laboratoire des Sciences du Climat et de l'Environnement (LSCE/IPSL), Institut Pierre Simon Laplace, Commissariat à l'Énergie Atomique et aux Énergies Alternatives-Centre National de la Recherche Scientifique-Université de Versailles Saint-Quentin, Université Paris-Saclay, F-91191 Gif-sur-Yvette, France; <sup>c</sup>Biogeology, Department of Geosciences, Universität Tübingen, 72074 Tuebingen, Germany; <sup>d</sup>Senckenberg Center for Human Evolution and Palaeoenvironment (HEP), Universität Tübingen, 72074 Tuebingen, Germany; <sup>e</sup>Laboratoire de Mesure du Carbone-14-Laboratoire des Sciences du Climat et de l'Environnement (LMC14-LSCE), Commissariat à l'Énergie Atomique et aux Énergies Alternatives Saclay (CEA/CNRS/Institut de Radioprotection et de Sûreté Nucléaire/Institut de Recherche pour le Développement/Ministère de la Culture et de la Communication), 91191 Gif-sur-Yvette cedex, France; <sup>f</sup>Center for Isotope Research, Groningen University, 9747 AG Groningen, The Netherlands; <sup>g</sup>Faculty of Archaeology, Leiden University, 2300 RA Leiden, The Netherlands; <sup>h</sup>Laboratoire Environnements Dynamiques Territoires Montagnes, UMR 5204, Université Savoie Mont Blanc, F-73376 Le Bourget du Lac cedex, France; <sup>i</sup>Laboratoire de la Préhistoire à l'Actuel: Culture, Environnement et Anthropologie, UMR 5199 CNRS, Université de Bordeaux, 33615 Pessac, France; <sup>j</sup>Centre de Recherche et d'Étude pour l'Art Préhistorique (CREAP-Cartailhac), Maison des Sciences de l'Homme et de la Société-Toulouse, Université de Toulouse, CNRS (Unité Service Recherche 3414), Maison de la Recherche, 31058 Toulouse cedex 9, France; <sup>k</sup>Laboratoire Travaux et Recherches Archéologiques sur les Cultures, les Espaces et les Sociétés, UMR 5608, Maison de la Recherche, 31058 Toulouse cedex 9, France; <sup>l</sup>Conservateur honoraire du Musée des Confluences (Lyon), 69007 Lyon, France; <sup>m</sup>Private address, 09000 Foix, France; and <sup>n</sup>Ministère de la Culture et de la Communication, Laboratoire de la Préhistoire à l'Actuel: Culture, Environnement et Anthropologie, UMR 5199, Université Bordeaux, 33615 Pessac, France

Edited by Richard G. Klein, Stanford University, Stanford, CA, and approved March 3, 2016 (received for review November 24, 2015)

**Radiocarbon dates for the ancient drawings in the Chauvet-Pont d'Arc Cave revealed ages much older than expected. These early ages and nature of this Paleolithic art make this United Nations Educational, Scientific and Cultural Organization (UNESCO) site indisputably unique. A large, multidisciplinary dating program has recently mapped the anthropological evolution associated with the cave. More than 350 dates (by <sup>14</sup>C, U-Th, TL and <sup>36</sup>Cl) were obtained over the last 15 y. They include 259 radiocarbon dates, mainly related to the rock art and human activity in the cave. We present here more than 80 previously unpublished dates. All of the dates were integrated into a high-precision Bayesian model based on archaeological evidence to securely reconstruct the complete history of the Chauvet-Pont d'Arc Cave on an absolute timescale. It shows that there were two distinct periods of human activity in the cave, one from 37 to 33,500 y ago, and the other from 31 to 28,000 y ago. Cave bears also took refuge in the cave until 33,000 y ago.**

Chauvet-Pont d'Arc cave | radiocarbon dating | Upper Paleolithic | Bayesian modeling

The cave of Chauvet-Pont d'Arc (Vallon-Pont d'Arc, Ardèche, Southern France), with its vivid red and black drawings and paintings, as well as engravings, is a prehistoric decorated cave of exceptional interest, recently classified as a United Nations Educational, Scientific and Cultural Organization (UNESCO) World Heritage site (1–5). Based on stylistic considerations, this art was first attributed to the Solutrean period (~22,000–18,000 B.P.). Surprisingly, however, the first <sup>14</sup>C dates of black drawings (the only depictions datable by this method) indicated a much older age (~32,000–30,000 B.P.) (6–9). These dates had a significant impact on commonly accepted theories of the evolution of prehistoric art (10) and thus emphasized the need to obtain a thorough understanding of the occupation history of the cave. A clear chronological framework would reveal the age not only of the art, but also of the periods of human and animal occupation and their relationship to the geomorphological evolution of the cave.

Chronologies can be relative or absolute. In this context, relative dating refers to the ordering of the art works and natural or animal related events within a relative temporal sequence, commonly based on patterns of superimposition of the different occurrences: for example, a painting that is overlain by another in a “stratigraphic sequence” is the oldest of the two, and a bear scratch on top of a drawing indicates that humans no longer occupied the cave when the

scratch was made. Based on this information alone, however, we do not know how much older the underlying event is: thus the need to obtain absolute dates of parietal art works.

In the chronology presented here, we use all of the absolute dates obtained from the art works, as well as other data associated with the parietal art, and animal and human occupations. Our earlier sampling methods and <sup>14</sup>C methodology were criticized (11–13). Before publishing further rock art dating results, we therefore initiated a broad, international intercomparison program of <sup>14</sup>C dating, followed by a holistic chronological model based on an extensive corpus of dates obtained by several different methods.

A set of 259 radiocarbon dates is currently available (Fig. 1 and *SI Appendix*, Fig. S1 and Table S1). They were compiled over the last 15 y and include analyses performed on samples consisting of parietal elements, such as animal drawings and charcoal marks (including torch marks), as well as charcoal and bear bones found on the cave floor. This research includes two intercomparison programs performed by various laboratories (14, 15); the charcoal samples were recently integrated into the Sixth International Radiocarbon Intercomparison Program (16). A set of more than 80 previously unpublished <sup>14</sup>C results obtained from

## Significance

We compiled a set of more than 250 radiocarbon dates related to the rock art, human activities, and bone remains in the Chauvet-Pont d'Arc Cave (Ardèche, France) and derive a modeled absolute chronology of the human and cave bear occupations of this site, presented here in calendar years. It provides an insightful framework for the successive events that occurred in the cave during the Paleolithic period.

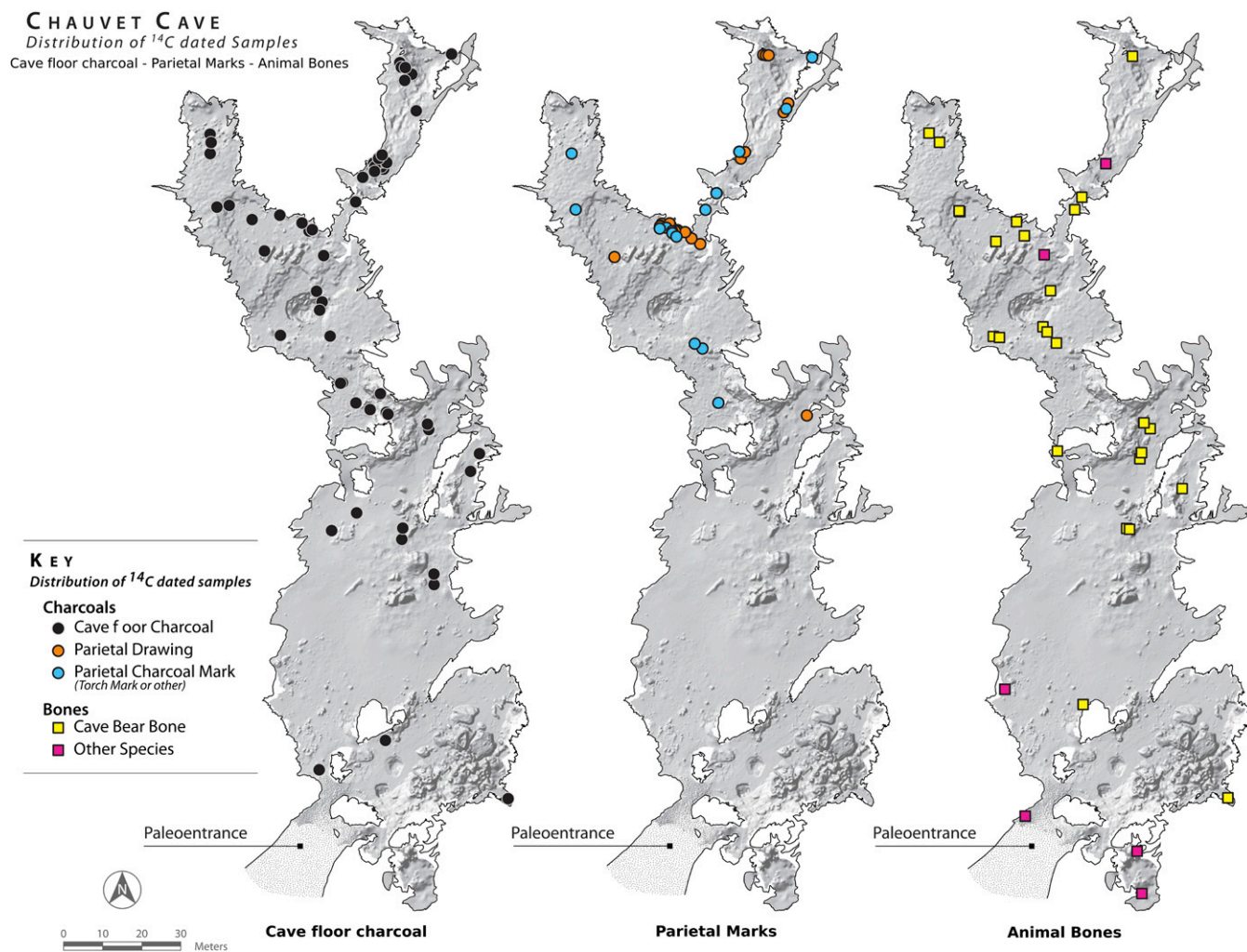
Author contributions: A.Q., H.V., J.M., J.C., and J.-M.G. designed research; A.Q., H.V., J.C., and J.-M.G. performed research; A.Q., H.B., E.D.-K., E.K., J.v.d.P., J.-J.D., V.F., C.F., J.M., M.P., and G.T. contributed new reagents/analytic tools; A.Q., H.V., E.D.-K., and J.-M.G. analyzed data; A.Q., H.V., J.M., and J.-M.G. wrote the paper; A.Q., H.V., J.-J.D., V.F., C.F., J.M., M.P., and G.T. were members of the Chauvet-Pont d'Arc Cave research team; J.C. was former head of the Chauvet-Pont d'Arc Cave research team; and J.-M.G. was head of the Chauvet-Pont d'Arc Cave research team.

The authors declare no conflict of interest.

This article is a PNAS Direct Submission.

<sup>1</sup>To whom correspondence should be addressed. Email: aquiles@ifao.egnet.net.

This article contains supporting information online at [www.pnas.org/lookup/suppl/doi:10.1073/pnas.1523158113/-DCSupplemental](http://www.pnas.org/lookup/suppl/doi:10.1073/pnas.1523158113/-DCSupplemental).



**Fig. 1.** Map of the Chauvet-Pont d'Arc Cave with localization of  $^{14}\text{C}$  samples: cave floor charcoal (71 analyses), drawings and charcoal marks (42 analyses), and animal bones (30 *U. spelaeus*, 5 other species, and a burned bone specimen).

clearly delimited human occupation phases in the cave is presented here.

Other dating methods were applied to different materials. Heated wall fragments were dated by thermoluminescence to determine the age of hearth structures (17, 18). Uranium-series dating was applied to carbonate concretions superimposed on some  $^{14}\text{C}$ -dated charcoal, yielding a “*terminus ante quem*” for the deposit of this charcoal (19, 20). The latter was recently confirmed by  $^{36}\text{Cl}$  exposure dating of rock, indicating collapses that occurred in the past and that sealed off the (paleo) entrance of the cave (21) (Fig. 1), thereby confirming the early age of the art contained inside.

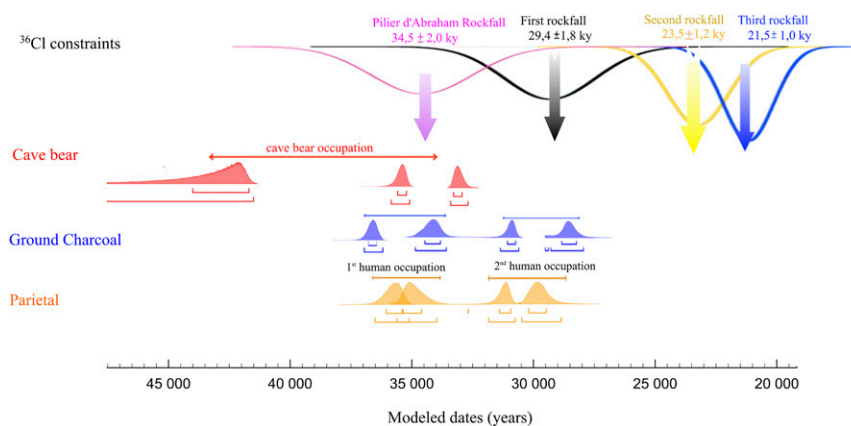
Currently, the Chauvet-Pont d'Arc Cave is the European Paleolithic rock art site with by far the largest number of independent dates obtained by different methods with the aim of comparing them to identify the occupation phases in the cave. This complex and substantial set of dates was purposefully attained from distinct archaeological and environmental remains. The results require integration into a high-precision Bayesian model, which also makes use of archaeological evidence. This approach enables the identification of distinct human and animal occupations in the cave in relation to past geomorphological events. Through this work, the complete history of the cave is now securely positioned on an absolute timescale.

## Materials and Methods

A map of the Chauvet-Pont d'Arc Cave is shown in Fig. 1. The location of the  $^{14}\text{C}$  samples is indicated. A multidisciplinary Geographical Information System (GIS) database has been used since 2008 (22). It allows precise and easy access to the documentation by incorporating accurate 3D spatial positioning of each object and sample.

Three independent sampling strategies were used:

- An innovative strategy was developed for charcoal pieces lying on the cave floor. They were sampled uniformly throughout the cave to obtain a statistically significant chronological record of its human occupation (*SI Appendix, Fig. S1*). The main limitations were the accessibility of the charcoal pieces that lay on the floor at varying distances from the metallic pathway on which we were required to circulate, and their state of preservation. Seventy-one charcoal samples from the cave floor were selected, and 8 were integrated into three intercomparison programs (14–16) (*SI Appendix, Table S1*). In total, 159 radiocarbon determinations were made on charcoal. In some cases, the charcoal could be attributed to the species *Pinus* (23).
- Samples of black charcoal drawings and charcoal marks (including torch marks) were taken following the recommendations of the parietal art specialists. Twenty-three charcoal drawings were sampled from different panels in the Hillaire Chamber (Panel of the Horses, Panel of the Reindeer, Alcove of the Lions), Skull Chamber (Deer Calf Pendant), Megaloceros Gallery (Panel of the Megaloceroses, Horse with a Double Mane, Rhinoceros Panel), and the End Chamber (Panel of the Bison, Belvedere Gallery entrance) (26 analyses), and 15 charcoal marks were



**Fig. 2.** High-precision Bayesian model obtained for the Chauvet-Pont d'Arc Cave. Modeled boundaries for the start and end of each occupation phase are represented in red for the Cave Bear model (postulating a continuous occupation), in blue for the Cave Floor Charcoal model, and in orange for the Parietal model. Two distinct human occupations are clearly identified, extending from 37,000 to 33,500 y ago for the first one, and from 31,000 to 28,000 y ago for the second one. Cave bear presence in the cave is attested until 33,000 y ago.

sampled from the sill to the end of the cave, in the Belvedere Gallery (16 analyses) (*SI Appendix, Table S1*).

iii) Dated bone samples were integrated into larger studies on paleontological remains (24, 25), including analysis of the stable isotopes  $^{13}\text{C}$  and  $^{15}\text{N}$  (26, 27), and cave bear DNA analysis (28). Bone species were selected randomly in the cave, taking into account their collagen preservation state. Thirty-six bone fragments found on the cave floor were analyzed, 30 of them belonging to *Ursus spelaeus* (*SI Appendix, Table S1*).

Cave floor charcoal and parietal occurrence analyses were mainly performed at the Tandetron [Laboratoire des Sciences du Climat et de l'Environnement (LSCE), Gif-Sur-Yvette, France] until 2001 (29) and, after this date, at the Artemis facility [3 MV-Pelletron accelerator, LSCE/Laboratoire de Mesure du Carbone 14 (LMC14), Gif-Sur-Yvette, France] (30), except for some of the oldest analyses, which were performed at the Radiocarbon Dating Center (Lyon, France) using conventional liquid scintillation counting or accelerator mass spectrometry (AMS) as a supplier. Intercomparison samples were analyzed in several laboratories worldwide (*SI Appendix, Table S1*). For the AMS analyses, charcoal samples were prepared using the standard acid-base-acid (ABA) method (31). The so-called "humic fraction" resulting from the base treatment was also dated to evaluate possible contamination of the charcoal (22 analyses) (*SI Appendix, Table S1 and Fig. S2*). The  $\delta^{13}\text{C}$  values were measured for all samples for the purpose of fractionation correction, following the international convention (32). For bone samples, the collagen was extracted applying an improved version of the Longin method (33) before dating at the Groningen Radiocarbon Laboratory.

Very small samples were analyzed using mass-dependent "blank" values (34–38). The lower the mass of the sample, the larger the  $^{14}\text{C}$  age uncertainty, up to 3 ka for samples containing less than 0.1 mg of carbon. The data reported are presented in *SI Appendix*.

## Results and Discussion

A set of 259 radiocarbon determinations was obtained from samples taken from the cave floors and walls. Only one result was rejected because of obvious contamination due to taphonomic processes and/or laboratory handling (*SI Appendix, Table S1*). More than 95% of the radiocarbon ages were measured as older than 25 ka B.P., and the 71 charcoal samples from the cave floor clearly show the existence of two main periods. The oldest period, associated with most of the samples and the eight intercomparison samples, ranges from ~32–30 ka B.P.; the second ranges from ~27–24 ka B.P. Nearly all of the radiocarbon dates of the black drawings correspond to the oldest occupation phase; only two dates could be associated with the second phase. The charcoal marks on the walls date to between 27 and 26 ka B.P. and belong to the second occupation phase. The dates of the humic fractions of 22 samples (16 drawings and six charcoal marks) concur with the dates of the associated purified charcoal fractions, showing that these charcoal specimens were not

contaminated. Among the 30 cave bear (*U. spelaeus*) bones analyzed, 26 fall within the time range of the first human occupation period, between 32 and 29 ka B.P. Four analyses (including one sample that was dated twice) yielded an age older than 34 ka B.P. Five other animal species were also dated: two *Canis lupus* (wolf), one *Capra ibex* (ibex), one *Capreolus capreolus* (roe deer), and one *Martes sp* (marten).

The radiocarbon dates were calibrated with the IntCal13 curve (39, 40) using OxCal software (v.4.2). All of the chronometric evidence leads to the same primary conclusions, showing two distinct human occupations, the first ranging from 37 to 33 ka cal (calibrated) B.P., followed by a second one from 31 to 28 ka cal B.P. The cave bear occupation extends from 42 to 33 ka cal B.P., thus almost in the same time range as the first human occupation phase. The *C. lupus* bones' ages fall into the human occupation phases whereas the *C. ibex* bone gives an age of 27.5–26.9 ka cal B.P. A *Martes sp.* bone yields a Holocene age, indicating a recent incursion of small mammals close to the entrance, probably linked with the *C. capreolus* bone.

The radiocarbon dates were used to generate a high-precision chronological sequence, using Bayesian modeling. The modeled results are expressed in ka cal B.P. with a  $2\sigma$  uncertainty range. We selected only samples with an uncertainty of less than 1,500  $^{14}\text{C}$  y ( $1\sigma$ ) and that yielded more than 0.1 mg of carbon. From the remaining 220 dates, three separate models were constructed and designated as the following: Cave Floor Charcoal, Parietal, and Cave Bear.

The initial archaeological premise was that several separate human occupation phases occurred during the prehistory of the cave. This hypothesis was based on empirical observations of independent archaeological information, as follows: (i) Several graphic superimpositions separated by bear scratches are visible on different panels (41); (ii) some charcoal marks (including torch marks) are superimposed on decorated panels (2); and (iii) several thin archaeological layers are present in three excavation pits (42). To test this initial archaeological hypothesis, the radiocarbon dates were sorted into two separate "phases," and "phase boundaries" were postulated (43). The measured calibrated date ranges were included as likelihoods in these two phases, without any other prior information about the absolute dating. Outlier probabilities (44) were defined for each sample based on its carbon mass (*SI Appendix, Table S1 and Figs. S3 and S5*).

The modeling of the dates of the charcoal from the cave floor shows that the first prehistoric human occupation could have been longer than the second one. To investigate the length of this occupation, the 88 dates of the intercomparison programs

**Table 1. Results of human and animal occupation phase models using the IntCal13 calibration curve**

Boundary	Number of <sup>14</sup> C dates in models (220)	IntCal 13			
		68% (ka cal B.P.)		95% (ka cal B.P.)	
		From	To	From	To
<b>Cave floor charcoal</b>					
Start I	157	36.7	36.4	37.0	36.2
End I		34.2	33.7	34.4	33.5
End I <sup>36</sup> Cl	69 Cave floor charcoal	34.2	33.7	34.4	33.5
Interval		2.6	3.2	2.3	3.5
Interval <sup>36</sup> Cl	88 Intercomparison analyses	2.6	3.2	2.3	3.5
Start II		31.1	30.8	31.4	30.7
End II		28.8	28.3	29.7	27.9
End II <sup>36</sup> Cl		28.8	28.3	29.5	27.9
<b>Parietal</b>					
Start I	33	36.1	35.4	36.6	35.2
End I		35.5	34.6	35.8	34.0
End I <sup>36</sup> Cl		35.4	34.6	35.7	34.0
Interval		3.3	4.3	2.7	4.6
Interval <sup>36</sup> Cl		3.3	4.2	2.7	4.9
Start II		31.4	31.0	31.9	30.5
End II		30.2	29.5	30.6	28.9
End II <sup>36</sup> Cl		30.1	29.5	30.5	29.0
<b>Cave bear</b>					
Start I	30	44.0	41.7	48.3	41.5
Intermediate		35.6	35.3	35.9	35.1
End I		33.3	33.0	33.5	32.7
End I <sup>36</sup> Cl		33.3	33.0	33.5	32.7

Results were obtained using the outlier approach.

were combined to obtain one sample age density (14–16). Such modeling substantially reduces the uncertainty of the sample determination. The resulting temporal densities obtained overlap and are strongly concentrated around 35.9 ka cal B.P., with a range of less than 500 y (*SI Appendix, Fig. S4*). They are clearly linked with the first human occupation (*SI Appendix, Table S2*).

The first five intercomparison samples were collected in the Megaloceros Gallery using the same random sampling strategy as that used for all of the other cave floor charcoal pieces, and we assume that they are representative of the first human occupation of the cave. Recently, the Sixth International Radiocarbon Intercomparison Program integrated charcoal pieces from the Chauvet-Pont d'Arc Cave into its study; they were dated by 47 laboratories worldwide and resulted in a mean value of  $31,765 \pm 136$  B.P. (75 determinations, in addition to the 259 of this paper) (16). This result means that each time we succeeded in improving the precision of a charcoal sample, we obtained an average of about 32,000 B.P. It is interesting to note that the distribution of the calibrated ranges of the 69 cave floor charcoal dates is similar to the calibrated individual densities of the intercomparison analyses. This agreement shows that the intercomparison results are representative of all other cave floor charcoal samples, and thus also of the first human occupation phase. This first human occupation was at around 35.9 ka cal B.P.

Taken together, the 69 dates from individual cave floor charcoal samples and the combined intercomparison densities were integrated into the Cave Floor Charcoal model, and 33 dates (19 black drawings and 14 charcoal marks) were integrated into the Parietal model. The Cave Floor Charcoal model provides a chronological foundation for the human occupation in the cave, which extends from 37,000 to 28,000 y ago with two separate occupation phases. The first human occupation phase extends from 37.0–36.2 to 34.4–33.5 ka cal B.P., and the second one from 31.4–

30.7 to 29.7–27.9 ka cal B.P. (Table 1 and *SI Appendix, Table S2 and Fig. S4*). The time interval between the end of the first phase and the beginning of the next one extends from 2.3 to 3.5 ka. Similar conclusions were obtained with the Parietal model. Due to the small number of dates, however, the modeled boundaries are wider in this case and overlap whereas the interval gap between them is also larger (Table 1 and *SI Appendix, Table S3 and Fig. S6*). These two models led to plausible and mutually compatible results showing that, statistically, the archaeological evidence and radiocarbon dates concur with each other.

No archaeological or paleontological evidence has been found to indicate that two separate cave bear occupation phases occurred in the cave. The Cave Bear model, which incorporated 30 dates, was constructed using one phase limited by an upper and lower boundary. An intermediate boundary was added to test the possibility of distinct phasing. The Cave Bear model yields boundaries extending from 48.3–41.5 to 33.5–32.7 ka cal B.P., indicating that the cave bear occupation was contemporaneous with the first human occupation phase. No remains of this species younger than 33 ka cal B.P. have been found in the cave (Table 1 and *SI Appendix, Tables S4 and S5 and Fig. S7*). Nevertheless, the resolution of the <sup>14</sup>C analysis is insufficient to refine the chronology between the first human occupation and the cave bear occupation, and in particular to determine whether these two occupations occurred at the same time. However, it is important to remember that a minimum of 200 individual cave bear skeletons have been identified thus far (24). Therefore, even if the first human occupation phase and the cave bear occupation phase fall within the same broad time interval, this overlap does not mean that both were present in the cave at the same time.

The dating strategy for the study of the Chauvet-Pont d'Arc Cave does not rely on radiocarbon analyses alone. An integrated

and multidisciplinary approach was developed to define a common temporal framework of both human and animal activities, as well as environmental events. Two fires that burned the walls of the cave were thus dated by thermoluminescence (TL). The results fall within the first  $^{14}\text{C}$ -dated human occupation phase (17, 18). In addition, the  $^{36}\text{Cl}$  cosmic-ray exposure method was used to date the different rockfalls that sealed the (paleo) entrance of the cave (21, 42). This study identified three successive rockfalls with mean ages of  $29.4 \pm 1.8$  (E1),  $23.5 \pm 1.2$  (E2), and  $21.5 \pm 1.0$  ka (E3). They were preceded by a first boulder rockfall near the Abraham Pillar (PAbr), which is located on the access path to the (paleo) entrance and is dated to  $34.5 \pm 2.0$  ka. In addition, uranium-series dating was performed on a speleothem deposited on the rockfall and sealing the cave entrance, showing that this rockfall occurred more than 11.5 ka (20).

Comparing the set of calibrated radiocarbon dates with the four distinct rockfall events dated by  $^{36}\text{Cl}$  shows that the beginning of the gap between the two human occupations could be contemporaneous with the Abraham Pillar rockfall and that the end of the second human occupation could have coincided with the E1 rockfall. Because the  $^{36}\text{Cl}$  densities are independent of any radiocarbon information, we postulated that, a priori, the temporal distributions of the Abraham Pillar and E1 rockfalls could have occurred in conjunction with the end of both occupation phases. These Gaussian temporal densities were integrated as a priori boundaries for the end of the first and second human occupation phases in the Cave Floor Charcoal and Parietal models. For the Cave Bear model, we successively tested the Abraham Pillar and E1 temporal distributions as a priori boundary distributions for the end of cave bear occupation. By default, we kept uninformative distribution functions for the beginning of all “phase boundaries.”

The Cave Floor Charcoal and Parietal a posteriori models confirmed the plausibility of correlating these geological events with the abandonment of the cave by humans (*SI Appendix, Tables S2 and S3*). For the Cave Bear model, the use of the Abraham Pillar rockfall estimate results in a more plausible model than the one constructed based on the E1 rockfall estimate, which does not set any constraints on the simulated temporal density associated with the end of cave bear occupation (*SI Appendix, Table S4*). Based on our data, the Abraham Pillar rockfall and the end of the cave bear occupation phase statistically concur. These models raise the question of the consequences of such rockfalls on the human and animal occupations of the cave.

The high-precision Bayesian model that we derived using an outlier approach provides a coherent and insightful framework for the successive events that occurred in the Chauvet-Pont d'Arc Cave during the Paleolithic period. It has enabled us to derive a robust chronological record of the cave, from the perspective of both the human and animal occupation phases, as well as its environmental evolution. This chronological model revises the history of the prehistoric people who frequented the Chauvet-Pont d'Arc

Cave (Table 1). Most of the dated samples originate from black charcoal drawings on panels at the end of the cave and the main fireplaces in the Megaloceros Gallery, which are attributed to a first period between 37,000 and 33,500 y ago. In parallel with this occupation, cave bears also took refuge in the cave between 48,500 and 33,000 y ago. The rockfall of a boulder section near the Abraham Pillar on the access path of the (paleo) entrance of the cave, 34,500 y ago, correlates with a period of nonoccupation between 33,500 and 31,000 y ago. Then, between 31,000 and 28,000 y ago, a second prehistoric occupation began and lasted  $\sim 2,000$ – $3,000$  y. The people who frequented the cave during this period in turn left their marks on the walls in the form of numerous torch marks and possibly two charcoal drawings in the second part of the cave. Another rockfall occurred at the entrance of the cave 29,400 y ago, partially closing off its access. The end of the second human occupation phase correlates with this geological event. No cave floor charcoal, drawing, or charcoal mark since that time has been identified in the cave, despite the extensive sampling of charcoal lying on the present cave floor where the most recent remains are expected to be found. A solitary ibex bone has been dated to  $\sim 27,000$  cal B.P., thus before the two last rockfall events that sealed the cave entrance 23,500–21,500 y ago. Since that time, no human or animal, other than small mammals and what they had scavenged, entered the cave until its rediscovery in 1994 (Fig. 2).

Using a robust interdisciplinary approach, our modeled results clearly support previous hypotheses postulating two different occupations of the Chauvet-Pont d'Arc Cave. They definitively show that humans frequented the site during two distinct time periods, between 37,000–33,500 and 31,000–28,000 y ago and that cave bears also took refuge in the cave until around 33,000 y ago. These clear results, based on a large number of dates obtained from diverse materials introduced into the cave through various biological or anthropogenic processes, provide a decisive argument in favor of the realization of the parietal art works before 28,000 y ago. They now enable further extensive exploration of the remarkable rock art created in the Chauvet-Pont d'Arc Cave during these two occupation phases.

**ACKNOWLEDGMENTS.** The topographic and positioning database used to create maps was kindly made available by Elisa Boche, Yanik Le Guillou, Frédéric Maksud, and Perazio Engineering. We thank the Chauvet-Pont d'Arc Cave research team, the LSCE, and the LMC14 teams for their impressive work and their substantial involvement in this project. We are grateful to the two anonymous reviewers for their helpful comments. This project was funded by the French Ministry of Culture and Communication in the framework of the Chauvet-Pont d'Arc archaeological research program and the Programme National de Recherche sur la Connaissance et la Conservation des Matériaux du Patrimoine Culturel 2012 program. The dating was performed at the LSCE laboratory (charcoal samples) and Groningen Laboratory (bone samples). The LSCE dating was funded by the Commissariat à l'Énergie Atomique et aux Énergies Alternatives. This is LSCE contribution 5702.

- Clottes J, et al. (1995) Les peintures préhistoriques de la Grotte Chauvet-Pont d'Arc (Ardèche, France): Datations directes et indirectes par la méthode du radiocarbone [The prehistoric paintings in Chauvet-Pont d'Arc Cave (Ardèche, France): Direct and indirect radiocarbon datings]. *Comptes-Rendus de l'Académie des Sciences, Series IIa* 320:1133–1140. French.
- Clottes J (1995) La grotte Chauvet aujourd'hui [Chauvet Cave today]. *La Grotte Chauvet à Vallon Pont-d'Arc [Chauvet Cave in Vallon Pont-d'Arc]*, eds Chauvet J-M, Brunel-Deschamps E, Hillaire C (Seuil, Paris), pp 81–116. French.
- Clottes J, ed (2001) *La Grotte Chauvet: L'art des Origins* [Chauvet Cave: The Art of Our Origins] (Seuil, Paris). French.
- Geneste J-M, ed (2005) *Recherches Pluridisciplinaires dans la Grotte Chauvet [Multidisciplinary Research at Chauvet Cave]: Journées SPF, Lyon, 11–12 Octobre, 2003* (Société Préhistorique Française, Nanterre, France). French.
- Clottes J, Geneste J-M (2012) Twelve years of research in Chauvet Cave: Methodology and main results. *A Companion to Rock Art*, eds McDonald D, Veth P (John Wiley, Chichester, UK).
- Valladas H, et al. (2001) Palaeolithic paintings: Evolution of prehistoric cave art. *Nature* 413(6855):479.
- Valladas H, Clottes J, Geneste J-M (2004) Chauvet, la grotte ornée la mieux datée du monde [Chauvet, the best dated decorated cave in the world]. *Pour la Science* 42:82–87.
- Valladas H, et al. (2005) Bilan des datations carbone 14 effectuées sur des charbons de bois de la grotte Chauvet. *Bull Soc Française Préhistoire* 102(1):109–113.
- Valladas H, Clottes J (2003) Style, Chauvet and radiocarbon. *Antiquity* 77(295):142–145.
- Leroi-Gourhan A (1965) *Préhistoire de l'Art Occidental [Treasures of Prehistoric Art]* (Mazenod, Paris). French.
- Züchner C (1996) The Chauvet Cave: Radiocarbon versus Archaeology. *INORA* 13: 25–27.
- Züchner C (1999) La cueva Chauvet datada arqueológicamente [Chauvet Cave dated archaeologically] *Edades: Revista de Historia* 6:167–185.
- Pettitt P, Bahn P (2003) Current problems in Dating Paleolithic cave art. *Antiquity* 77(295):134–141.
- Cuzange M-T, et al. (2007) Radiocarbon intercomparison program for Chauvet Cave. *Radiocarbon* 49(2):339–347.
- Quiles A, et al. (2014) Second radiocarbon intercomparison program for the Chauvet-Pont d'Arc Cave, Ardèche, France. *Radiocarbon* 56(2):833–850.
- Scott M, Cook G, Naysmith P (2012) Announcement: Radiocarbon Laboratory Quality Assurance Program (SIRI). *Radiocarbon* 54(2):v.

17. Guibert P, et al. (2015) When were the walls of the Chauvet-Pont d'Arc cave heated? A chronological approach by thermoluminescence. *Quat Geochronol* 29:36–47.
18. Ferrier C, et al. (2014) Les parois chauffées de la grotte Chauvet-Pont d'Arc (Ardèche, France): Caractérisation et chronologie. *Paleo* 25:59–78.
19. Genty D, Blamart D, Ghaleb B (2005) Apport des stalagmites pour l'étude de la grotte Chauvet: Datations absolues U/Th (TIMS) et reconstitution paléoclimatique par les isotopes stables de la calcite [The contribution of stalagmites in the study of Chauvet Cave: Absolute dates by U/Th (TIMS) and paleoclimatic reconstruction through the calcite stable isotopes]. *Recherches Pluridisciplinaires dans la Grotte Chauvet [Multidisciplinary Research at Chauvet Cave]: Journées SPF, Lyon, 11–12 Octobre, 2003*, ed Geneste J-M (Société Préhistorique Française, Nanterre, France), pp 45–62. French.
20. Genty D, et al. (2004) Datations U/Th (TIMS) and  $^{14}\text{C}$  (AMS) des stalagmites de la grotte Chauvet (Ardèche, France): Intérêt pour la chronologie des événements naturels et anthropiques de la grotte. *C R Palevol* 3:629–642.
21. Sadier B, et al. (2012) Further constraints on the Chauvet cave artwork elaboration. *Proc Natl Acad Sci USA* 109(21):8002–8006.
22. Ployon E, et al. (2016) Le SIG de la grotte Chauvet—Un outil au service de recherches scientifiques interdisciplinaires [The GIS of Chauvet Cave—An interdisciplinary scientific research tool]. *Atlas de la Grotte Chauvet-Pont d'Arc: Regards Disciplinaires Croisés (à Paraître)* [Atlas of the Chauvet-Pont d'Arc Cave: Integrated Disciplinary Perspectives], in press. French.
23. Théry-Parisot I, Thiébaud S (2005) Le pin (*pinus sylvestris*): Préférence d'un taxon ou contrainte de l'environnement? Etude des charbons de bois de la grotte Chauvet. *Bull Soc Française Préhistoire* 102:69–75.
24. Philippe M, Fosse P (2003) La faune de la grotte Chauvet (Vallon-Pont-d'Arc, Ardèche): Présentation préliminaire paléontologique et taphonomique. *Paleo* 15:123–140.
25. Fosse Ph, Philippe M (2005) La faune de la grotte Chauvet: Paléobiologie et anthropozoologie. *Bull Soc Préhistorique Française* 102:89–102.
26. Bocherens H, et al. (2005) Etat de conservation des ossements dans la Grotte Chauvet (Vallon-Pont-d'Arc, Ardèche, France): Implications pour la biogéochimie isotopique (paleodiètes, paléoenvironnements, datations au radiocarbone). *Bull Soc Préhistorique Française* 102:77–87.
27. Bocherens H, Drucker DG, Billiou D, Geneste JM, van der Plicht J (2006) Bears and humans in Chauvet Cave (Vallon-Pont-d'Arc, Ardèche, France): Insights from stable isotopes and radiocarbon dating of bone collagen. *J Hum Evol* 50(3):370–376.
28. Bon C, et al. (2011) Low regional diversity of late cave bears mitochondrial DNA at the time of Chauvet Aurignacian paintings. *J Archaeol Sci* 38(8):1886–1895.
29. Arnold A, Bard E, Maurice P, Valladas H, Duplessy J-C (1989)  $^{14}\text{C}$  dating with the Gif-sur-Yvette Tandemtron accelerator: Status report and study of isotopic fractionations in the sputter ion source. *Radiocarbon* 31(3):284–291.
30. Cottereau E, et al. (2007) Artemis, the new  $^{14}\text{C}$  AMS at LMC14 in Saclay, France. *Radiocarbon* 49(2):291–299.
31. Valladas H, et al. (2001) Radiocarbon AMS dates for Paleolithic cave paintings. *Radiocarbon* 43(2B):977–986.
32. Mook WG, van der Plicht J (1999) Reporting  $^{14}\text{C}$  activities and concentrations. *Radiocarbon* 41(3):227–239.
33. Longin R (1971) New method of collagen extraction for radiocarbon dating. *Nature* 230(5291):241–242.
34. Vogel JS, Nelson DE, Southon JR (1987)  $^{14}\text{C}$  background levels in an accelerator mass spectrometry system. *Radiocarbon* 29(3):323–333.
35. Hatté C, Hodgins G, Jull AJT, Bishop B, Tesson B (2008) Marine chronology based on  $^{14}\text{C}$  dating on diatoms proteins. *Mar Chem* 109:143–151.
36. Santos GM, et al. (2010) Blank assessment for ultra-small radiocarbon samples: Chemical extraction and separation versus AMS. *Radiocarbon* 52(2-3):1322–1335.
37. Mendez-Millan M, et al. (2013) Compound-specific  $^{13}\text{C}$  and  $^{14}\text{C}$  measurements improve the understanding of soil organic matter dynamics. *Biogeochemistry* 118(1-3):205–223.
38. Delqué-Kollić E, et al. (2013) Advances in handling small radiocarbon samples at the Laboratoire de Mesure du Carbone 14 in Saclay, France. *Radiocarbon* 55(2-3):648–656.
39. Reimer PJ, et al. (2013) IntCal13 and marine  $^{13}\text{C}$  radiocarbon age calibration curves 0–50,000 years cal BP. *Radiocarbon* 55(4):1869–1887.
40. Bronk Ramsey C, Scott M, van der Plicht J (2013) Calibration for archaeological and environmental terrestrial samples in the time range 26–50 ka cal BP. *Radiocarbon* 55(4):2021–2027.
41. Feruglio V, Baffier D (2005) Les dessins noirs des salles Hillaire et du Crâne de la grotte Chauvet-Pont-d'Arc: Chronologie relative [The black drawings in the Hillaire and Skull Chambers of Chauvet-Pont d'Arc Cave: Relative chronology]. *Recherches Pluridisciplinaires dans la Grotte Chauvet [Multidisciplinary Research at Chauvet Cave]: Journées SPF, Lyon, 11–12 Octobre, 2003*, ed Geneste J-M (Société Préhistorique Française, Nanterre, France), pp 149–158. French.
42. Delannoy JJ, Sadier B, Jaillet S, Ployon E, Geneste J-M (2010) Reconstitution de l'entrée préhistorique de la grotte Chauvet-Pont d'Arc (Ardèche, France): Les apports de l'analyse géomorphologique et de la modélisation 3D. *Karstologia* 56:17–34.
43. Bronk Ramsey C (2009) Bayesian analysis of radiocarbon dates. *Radiocarbon* 51(1):337–360.
44. Bronk Ramsey C (2009) Dealing with outliers and offsets in radiocarbon dating. *Radiocarbon* 51(3):1023–1045.