



**HAL**  
open science

## Stability analysis of a system coupled to a heat equation.

Lucie Baudouin, Alexandre Seuret, Frédéric Gouaisbaut

► **To cite this version:**

Lucie Baudouin, Alexandre Seuret, Frédéric Gouaisbaut. Stability analysis of a system coupled to a heat equation.. Automatica, 2019, 99, pp.195-202. 10.1016/j.automatica.2018.10.021 . hal-01566455v2

**HAL Id: hal-01566455**

**<https://hal.science/hal-01566455v2>**

Submitted on 10 Dec 2018

**HAL** is a multi-disciplinary open access archive for the deposit and dissemination of scientific research documents, whether they are published or not. The documents may come from teaching and research institutions in France or abroad, or from public or private research centers.

L'archive ouverte pluridisciplinaire **HAL**, est destinée au dépôt et à la diffusion de documents scientifiques de niveau recherche, publiés ou non, émanant des établissements d'enseignement et de recherche français ou étrangers, des laboratoires publics ou privés.

# Stability analysis of a system coupled to a heat equation. <sup>\*</sup>

10 December 2018

Lucie Baudouin <sup>\*</sup>, Alexandre Seuret <sup>\*</sup>, Frederic Gouaisbaut <sup>\*</sup>

<sup>\*</sup> *LAAS-CNRS, Université de Toulouse, CNRS, UPS, Toulouse, France.*

---

**Abstract:** As a first approach to the study of systems coupling finite and infinite dimensional natures, this article addresses the stability of a system of ordinary differential equations coupled with a classic heat equation using a Lyapunov functional technique. Inspired from recent developments in the area of time delay systems, a new methodology to study the stability of such a class of distributed parameter systems is presented here. The idea is to use a polynomial approximation of the infinite dimensional state of the heat equation in order to build an enriched energy functional. A well known efficient integral inequality (Bessel inequality) will allow to obtain stability conditions expressed in terms of linear matrix inequalities. We will eventually test our approach on academic examples in order to illustrate the efficiency of our theoretical results.

*Keywords:* heat equation, Lyapunov functional, Bessel inequality, polynomial approximation.

---

## 1. INTRODUCTION

Coupling a classical finite dimensional system to a partial differential equation (PDE) presents not only interesting theoretical challenges but can also formalize various applicative situations. Effectively, as the solution of the PDE is a state belonging to an infinite dimensional functional space, its coupling with a finite dimensional system brings naturally new difficulties in stability study and/or control of the coupled system.

We can also list several specific situations worth being modeled by this kind of heterogeneous coupled system, see e.g. [18] or [1]. For example, the finite dimensional systems could represent a dynamic controller for a system modeled by a PDE (see [11], [19] and references therein). Instead, a system of ordinary differential equations (ODEs) can model a component coupled to a phenomenon described by PDEs as in [10]. Conversely, the PDE can model an actuator or sensor's behavior and the goal could be to study the stabilization of a finite dimensional system in spite of the introduction of the actuator/sensor's dynamics.

Actually, the last decade has seen the emergence of number of papers concerning the stability or control of this type of coupled systems (as in [25], [19], see also references therein). When considering such a coupling of equations of different nature, it is important to highlight that the notion of stability regarding PDEs is not as generic as for classical systems of ODEs. It depends specifically on the type of PDE under consideration, on the functional space where the solution belongs and the choice of an appropriate norm (in other words the definition of the energy of the infinite dimensional state), see [26]. Of course, the type of interconnection between the ODE and the PDE and the boundary conditions of the PDE also plays a role (see for

instance the reference book [9] or [4] for a rather complete exposition of the stability and stabilization problem).

One classical way to study the stability of such a coupled system relies on discretization techniques leading to some finite dimensional systems to be studied. The question of convergence (from the discretized to the corresponding continuous system) of the results is then quite natural and may be complicated to deal with (see [20]). That's the reason why several researches have turned to direct approaches: the objective is to determine a Lyapunov functional for the overall system directly, without going through a discretization scheme. This gave rise to many interesting methodologies. Hence, a first one relies on the semi-group theory to model the overall system and it may lead, as in [14], to some Linear Operator Inequalities to be solved numerically. Unfortunately, this approach remains quite limited (see [15]) and works finally only for small dimensional ODE systems since no numerical tools are available to solve these Linear Operator Inequalities. Furthermore, the generic semi-group approach generally fails to develop a constructive approach for the design of Lyapunov functionals.

Another possible approach considers the design of a Lyapunov functional which is usually based on the sum of a classical Lyapunov functional identified for each part of the system under consideration. When dealing with the PDE of a coupled system, its Lyapunov functional is actually the "energy" of the PDE (see [22], [21]). In the book [19], chapter 15, the control of a finite dimensional system connected to an actuator/sensor modeled by a heat equation with Neumann and Dirichlet boundary conditions is considered. The author adopts the backstepping method employed originally in the case of the transport (or delay) equation. The resulting feedback system is equivalent to a finite dimensional exponentially stable system cascaded with a

---

<sup>\*</sup> This work is supported by the ANR project SCIDiS contract number 15-CE23-0014.

heat condition. The choice of an appropriate Lyapunov function as a sum of the energy of the heat equation and a classical quadratic function for the finite dimensional system allows to prove the exponential stability of the overall system. Recently, several approaches based on an optimisation procedure have been developed. Starting from a semi-group modeling of the PDEs, the authors of [16] construct a very general Lyapunov functional which parameters are optimised via a sum of square procedure (see also [2]). This methodology is then applied to the controller or observer design.

Considering in this article a situation where a heat type phenomenon is to be controlled at its boundary by a finite dimensional dynamical controller, we are interested with the efficient and numerically tractable stability analysis of the closed-loop system. More precisely, we will not work on the control design, but on the stability study of a system coupling a one-dimensional heat equation and an ODE. The practical interest of such a model is reflected for example in the study of temperature control systems using a thermocouple as a heat sensor.

Our task in this article will be to study a finite dimensional ODE system coupled with a heat equation in 1-d in space, where the interconnection is performed through the boundary of the space domain. We aim at proving exponential stability results, meaning that starting from an arbitrary initial condition, the whole system's solution follows a time trajectory that exponentially converges in spatial norm to an equilibrium state. Nevertheless, the stability analysis is challenging since it depends strongly on the norm chosen to measure the deviation with respect to the steady state (for the PDE part specifically). But above all, our goal is to provide practical stability tests for the whole system that can take into account both the finite dimensional state and its interplay with the infinite dimensional state of the PDE. It will be performed thanks to the construction of a general Lyapunov functional based on the weighed classical energy of the full system enriched by a quadratic term built on a truncation of the distributed state. To this end, we will use the projection of the state over a set of polynomials and take advantage of this approximation to provide tractable stability conditions for the whole coupled system. A first step of our study, using only the mean value of the PDE state as a rough approximation, was presented in the conference paper [5]. Notice that the tools of this approach have also been used in [3] in order to study the stability of a coupling between an ODE and a hyperbolic equation.

*Notation.* As usual,  $\mathbb{N}$  denote the sets of positive integers,  $\mathbb{R}^+$ ,  $\mathbb{R}^n$ , and  $\mathbb{R}^{n \times m}$  the positive reals,  $n$ -dimensional vectors and  $n \times m$  matrices ; the Euclidean norm writes  $|\cdot|$ . For any matrix  $P$  in  $\mathbb{R}^{n \times n}$ , we denote  $\text{He}(P) = P + P^\top$  (where  $P^\top$  is the transpose matrix) and  $P \succ 0$  means that  $P$  is symmetric positive definite, *ie*  $P \in \mathbb{S}_+^n$ . For a partitioned matrix, the symbol  $*$  stands for symmetric blocks and  $I$  is the identity,  $0$  the zero matrix. The partial derivative on a function  $u$  with respect to  $x$  is denoted  $\partial_x u = \frac{\partial u}{\partial x}$  (while the time derivative of  $X$  is  $\dot{X} = \frac{dX}{dt}$ ). Finally, using  $L^2(0, 1)$  for the Hilbert space of square integrable functions, one writes  $\|z\|^2 = \int_0^1 |z(x)|^2 dx = \langle z, z \rangle$ , and we also define the Sobolev spaces  $H^1(0, 1) = \{z \in L^2(0, 1), \partial_x z \in L^2(0, 1)\}$  and its norm by  $\|z\|_{H^1(0,1)}^2 = \|z\|^2 + \|\partial_x z\|^2$ ,  $H^2(0, 1) =$

$\{z \in L^2(0, 1), \partial_x z \in L^2(0, 1), \partial_{xx} z \in L^2(0, 1)\}$  and its norm by  $\|z\|_{H^2(0,1)}^2 = \|z\|^2 + \|\partial_x z\|^2 + \|\partial_{xx} z\|^2$ .

*Outline.* A thorough description of the system under study will be given in Section 2. Then, Section 3 will detail the main tools of the proof of the stability result presented in Section 4. An illustrating example of this theoretical result will conclude in Section 5.

## 2. PROBLEM DESCRIPTION

### 2.1 A coupled system

Consider the coupling of a finite dimensional system in the variable  $X \in \mathbb{R}^n$  with a heat partial differential equation in the scalar variable  $u$ , in the following way:

$$\begin{cases} \dot{X}(t) = AX(t) + Bu(1, t) & t > 0, \\ \partial_t u(x, t) = \gamma \partial_{xx} u(x, t), & x \in (0, 1), t > 0, \\ u(0, t) = CX(t), & t > 0 \\ \partial_x u(1, t) = 0, & t > 0. \end{cases} \quad (1)$$

The state vector of the system is the pair  $(X(t), u(x, t)) \in \mathbb{R}^n \times \mathbb{R}$  and it satisfies the compatible initial datum  $(X(0), u(x, 0)) = (X^0, u^0(x))$  for  $x \in (0, 1)$ . The thermal diffusivity is denoted  $\gamma \in \mathbb{R}_+$  and the matrix  $A \in \mathbb{R}^{n \times n}$ , the vectors  $B \in \mathbb{R}^{n \times 1}$  and  $C \in \mathbb{R}^{1 \times n}$  are constant.

*Remark 1.* One can imagine different situations that can be translated into the coupled system (1). As a toy problem of more complicated situations, the system we study already allows to face several difficulties inherent to a situation mixing finite and infinite dimensional states. Nevertheless, we can describe two more physical situations that could be simplified as our toy problem : either a finite dimensional system confronted with a thermocouple sensor, or a heat device connected to a finite dimension dynamic controller. Anyway, these are only mere ideas that could link ODEs with a heat PDE and we remain here at a simplified but still challenging level.

### 2.2 Existence and regularity of the solutions

Before anything else, one should know that the partial differential equation  $\partial_t u - \gamma \partial_{xx} u = 0$  in (1) of unknown  $u = u(x, t)$  is a classic heat PDE and if the boundary data are of Dirichlet homogeneous type (*i.e.*  $u(0, t) = u(1, t) = 0$ ) and the initial datum  $u(\cdot, 0) = u^0$  belongs to  $H_0^1(0, 1)$ , it has a unique solution  $u$  satisfying (see [7])

$$\begin{aligned} u &\in C([0, +\infty[; H_0^1(0, 1)) \cap L^2(0, +\infty; H^2(0, 1)), \\ \partial_t u &\in L^2(0, +\infty; L^2(0, 1)). \end{aligned}$$

In this article, we are dealing with System (1), coupling ODEs with a heat equation through its boundary data, system for which we should start with the existence and regularity of the solution  $(X, u)$ . A Galerkin method (see e.g. [13]) is the key of the proof of such a result, stated in the following lemma.

*Lemma 1.* Assuming that the initial data  $(X^0, u^0)$  belong to  $\mathbb{R}^n \times L^2(0, 1)$ , system (1) admits a unique solution  $(X, u)$  such that

$$\begin{aligned} X &\in C([0, +\infty[; \mathbb{R}^n) \\ u &\in C([0, +\infty[; H^1(0, 1)) \cap L^2(0, +\infty; H^2(0, 1)) \\ &\text{and } \partial_t u \in L^2(0, +\infty; L^2(0, 1)). \end{aligned}$$

In the sake of consistency with the Lyapunov approach we will use in the stability study of our coupled system, we give below the formal proof using the Galerkin energy based method. One should notice that the proposed approach has been developed in particular for parabolic equations in [13, Chapter 7.1].

*Proof :* Let us define the total energy of System (1) by  $E(X(t), u(t)) = |X(t)|_n^2 + \|u(t)\|_{H^1(0,1)}^2$ . In the sequel, we will write  $E(t) = E(X(t), u(t))$  in order to simplify the notations. Easy calculations based on the equations of System (1) and integrations by parts give :

$$\begin{aligned} \dot{E}(t) &= X(t)^\top (A^\top + A)X(t) + 2u(1, t)B^\top X(t) \\ &\quad - 2\gamma \|\partial_x u(t)\|^2 - 2\partial_x u(0, t)(\gamma C + CA)X(t) \\ &\quad - 2\partial_x u(0, t)CBu(1, t) - 2\gamma \|\partial_{xx} u(t)\|^2. \end{aligned}$$

First, in order to deal with the three cross terms mixing  $X(t)$ ,  $u(1, t)$  and  $\partial_x u(0, t)$ , we use Young's inequality  $(ab \leq \frac{a^2}{2\varepsilon} + \frac{\varepsilon b^2}{2})$ , and choosing each time appropriately the tuning parameter  $\varepsilon$ , one can obtain

$$\begin{aligned} \dot{E}(t) &\leq M|X(t)|_n^2 + M|u(1, t)|^2 - 2\gamma \|\partial_x u(t)\|^2 \\ &\quad + 2\varepsilon \|\partial_x u(0, t)\|^2 - 2\gamma \|\partial_{xx} u(t)\|^2, \end{aligned}$$

where, from now on,  $M > 0$  is a generic constant depending on  $A, B, C, \gamma, \varepsilon$ .

Second, since we have the Sobolev embeddings  $H^1(0, 1) \subset C([0, 1])$  and  $H^2(0, 1) \subset C^1([0, 1])$ , one can write, omitting the time variable  $t$ , that

$$|u(1)|^2 \leq 2|u(0)|^2 + 2\|\partial_x u\|^2 \text{ and } |\partial_x u(0)|^2 \leq \|\partial_{xx} u\|^2.$$

Along with  $u(0) = CX$ , it leads to

$$\dot{E}(t) \leq M|X(t)|_n^2 + M\|\partial_x u(t)\|^2 + 2(\varepsilon - \gamma)\|\partial_{xx} u(t)\|^2.$$

On the one hand, choosing  $0 < \varepsilon < \gamma$ , we can eliminate the last term (in  $\|\partial_{xx} u(t)\|^2$ , because its coefficient is negative) so that we get  $\dot{E}(t) \leq ME(t)$  ensuring, from Grönwall's inequality, the existence of a unique solution  $(X, u)$  in the space  $C([0, +\infty[; \mathbb{R}^n \times H^1(0, 1))$ .

On the other hand, we can also move the  $\|\partial_{xx} u(t)\|^2$  term to the left hand side of the estimate and deduce from the existence of a finite upper bound that  $u \in L^2(0, +\infty; H^2(0, 1))$ . Thereafter, using the heat equation  $\partial_t u = \gamma \partial_{xx} u$  from (1), we also get  $\partial_t u \in L^2(0, +\infty; L^2(0, 1))$ .  $\square$

These somewhat terse explanations allows us to manipulate the solution  $(X, u)$  in the appropriate functional space along this article.

### 2.3 Equilibrium and stability

As proved in the preliminary study [5], if the matrix  $A + BC$  is non singular, then system (1) has a unique equilibrium  $(X_e = 0, u_e \equiv 0) \in \mathbb{R}^n \times H^1(0, 1; \mathbb{R})$ . The main result of this article is the construction of numerically tractable sufficient conditions, to obtain the exponential stability around the steady state  $(0, 0)$ , which definition is recalled:

*Definition 1.* System (1) is said to be exponentially stable if for all initial conditions  $(X^0, u^0) \in \mathbb{R}^n \times H^1(0, 1)$ , there exist  $K > 0$  and  $\delta > 0$  such that for all  $t > 0$ ,

$$E(X(t), u(t)) \leq Ke^{-\delta t} \left( |X^0|_n^2 + \|u^0\|_{H^1(0,1)}^2 \right). \quad (2)$$

More precisely, our goal is then to construct a Lyapunov functional in order to narrow the proof of the stability of the complete infinite dimensional system (1) to the resolution of linear matrix inequalities (LMI).

## 3. MAIN TOOLS

Before stating our main result in the next section, we need to give precise details about the technical tools we will use in the proof : a Lyapunov functional, some Legendre polynomials and the Bessel inequality.

### 3.1 Lyapunov functional

Inspired by the complete Lyapunov-Krasovskii functional, which is a necessary and sufficient conditions for stability for delay systems [17], we consider a Lyapunov functional candidate for system (1) of the form:

$$\begin{aligned} V(X(t), u(t)) &= X^\top(t)PX(t) + 2X^\top(t) \int_0^1 \mathcal{Q}(x)u(x, t)dx \\ &\quad + \int_0^1 \int_0^1 u^\top(x_1, t)\mathcal{T}(x_1, x_2)u(x_2, t)dx_1 dx_2 \\ &\quad + \alpha \int_0^1 |u(x, t)|^2 dx + \beta \int_0^1 |u_x(x, t)|^2 dx, \end{aligned}$$

where the matrix  $P \in \mathcal{S}_n^+$  and the functions  $\mathcal{Q} \in C(L^2(0, 1; \mathbb{R}^{n \times m}))$  and  $\mathcal{T} \in C(L^2(0, 1; \mathbb{S}^m))$  have to be determined. The first term and the two last terms of  $V$  are a weighted version of the classical energy  $E(t)$  of the system. The term depending on the function  $\mathcal{T}$  has been recently considered in the literature in [16, 2]. The term depending on  $\mathcal{Q}$  is introduced in order to represent the coupling between the ODE and the heat equation.

Our objective is to define this Lyapunov functional in order to reduce the proof of the stability of the complete infinite dimensional system (1) to the resolution of LMIs. Since a part of the state  $(X, u)$  of the system is distributed ( $u$  being the solution of a heat equation and depending on a space variable  $x$  in addition to the time  $t$ ), it is proposed to impose a special structure for the functions  $\mathcal{Q}$  and  $\mathcal{T}$  in order to obtain numerically tractable stability conditions. The two functions will actually be build as projection operators over a finite dimensional orthogonal family : the  $N + 1$  first shifted Legendre polynomials.

### 3.2 Properties of Legendre Polynomials

Let us define here the shifted Legendre polynomials considered over the interval  $[0, 1]$  and denoted  $\{\mathcal{L}_k\}_{k \in \mathbb{N}}$ . Instead of giving the explicit formula of these polynomials, we detail here their principal properties. One can find details and proofs in [8]. To begin with, the family  $\{\mathcal{L}_k\}_{k \in \mathbb{N}}$  is known to form an orthogonal basis of  $L^2(0, 1; \mathbb{R})$  since  $\langle \mathcal{L}_j, \mathcal{L}_k \rangle = \int_0^1 \mathcal{L}_j(x)\mathcal{L}_k(x)dx = \frac{1}{2k+1}\delta_{jk}$ , where  $\delta_{jk}$  denotes the Kronecker delta, equal to 1 if  $j = k$  and to 0 otherwise. Denote the corresponding norm of this inner scalar product  $\|\mathcal{L}_k\| = \sqrt{\langle \mathcal{L}_k, \mathcal{L}_k \rangle} = 1/\sqrt{2k+1}$ . The boundary values are given by:

$$\mathcal{L}_k(0) = (-1)^k, \quad \mathcal{L}_k(1) = 1. \quad (3)$$

The first shifted Legendre polynomials are:  $\mathcal{L}_0(x) = 1$ ,  $\mathcal{L}_1(x) = 2x - 1$ ,  $\mathcal{L}_2(x) = 6x^2 - 6x + 1$ . Furthermore, the following derivation formula holds:

$$\mathcal{L}'_k(x) = \sum_{j=0}^{k-1} (2j+1)(1-(-1)^{k+j})\mathcal{L}_j(x), k \geq 1, \quad (4)$$

from which, denoting  $\ell_{kj} = (2j+1)(1-(-1)^{k+j})$  if  $j \leq k-1$  and  $\ell_{kj} = 0$  if  $j \geq k$  we deduce that for all  $k \geq 2$ ,

$$\mathcal{L}''_k(x) = \sum_{j=1}^{k-1} \sum_{i=0}^{j-1} \ell_{kj}\ell_{ji}\mathcal{L}_i(x), \text{ and } \mathcal{L}''_0(x) = \mathcal{L}''_1(x) = 0.$$

*Remark 2.* For the record, the classical Legendre polynomials are defined on  $[-1, 1]$  as the orthonormalization of the family  $\{1, x, x^2, x^3, \dots\}$  but are shifted here to  $[0, 1]$ .

It is now important to notice that any  $y \in L^2(0, 1)$  can be written  $y = \sum_{k \geq 0} \langle y, \mathcal{L}_k \rangle \mathcal{L}_k / \|\mathcal{L}_k\|^2$  and to set here

$$\begin{aligned} U_N(t) &= \text{Vect}_{k=0..N} \langle u(t), \mathcal{L}_k \rangle && \text{in } \mathbb{R}^{N+1}, \\ \mathbf{1}_N &= [1 \ 1 \ \dots \ 1]^\top && \text{in } \mathbb{R}^{N+1}, \\ \mathbf{1}_N^* &= [1 \ -1 \ \dots \ (-1)^N]^\top && \text{in } \mathbb{R}^{N+1}, \\ L_N &= (\ell_{ij})_{i,j=0..N} && \text{in } \mathbb{R}^{N+1, N+1}, \\ \mathcal{I}_N &= \text{diag}(1, 3, \dots, 2N+1) && \text{in } \mathbb{R}^{N+1, N+1}. \end{aligned} \quad (5)$$

One should notice that for all  $N \in \mathbb{N}^*$ , the  $L_N$  matrices are strictly lower triangular thanks to the definition of the  $\ell_{k,j}$  below (4). The following notations, that we will use below, stems from this:

$$\begin{aligned} L_N &= [L_{1,N} \ \mathbf{0}_{N+1,1}] \text{ with } L_{1,N} \text{ in } \mathbb{R}^{N+1, N}, \\ L_N^2 &= [L_{2,N} \ \mathbf{0}_{N+1,2}] \text{ with } L_{2,N} \text{ in } \mathbb{R}^{N+1, N-1}. \end{aligned} \quad (6)$$

The following properties will be useful for the stability analysis hereafter.

*Property 1.* Let  $u \in C(\mathbb{R}_+; L^2(0, 1))$  satisfy the heat equation and its boundary conditions in (1). The following formula holds:

$$\begin{aligned} \text{Vect}_{k=0..N} \langle \partial_x u(t), \mathcal{L}_k \rangle &= -L_N U_N(t) + \mathbf{1}_N u(1, t) - \mathbf{1}_N^* C X(t) \end{aligned} \quad (7)$$

$$= -L_{1,N} U_{N-1}(t) + \mathbf{1}_N u(1, t) - \mathbf{1}_N^* C X(t) \quad (8)$$

$$= \begin{bmatrix} -C^\top \mathbf{1}_N^{*\top} \\ \mathbf{1}_N^\top \\ -L_{1,N}^\top \end{bmatrix}^\top \begin{bmatrix} X(t) \\ u(1, t) \\ U_{N-1}(t) \end{bmatrix}.$$

*Proof :* An integration by parts and the first derivation formula (4) of the Legendre polynomials yield

$$\langle \partial_x u(t), \mathcal{L}_0 \rangle = u(1, t) - u(0, t), \quad \text{and } \forall k \geq 1$$

$$\langle \partial_x u(t), \mathcal{L}_k \rangle = - \sum_{j=0}^{k-1} \ell_{kj} \langle u(t), \mathcal{L}_j \rangle + u(1, t) - u(0, t) (-1)^k.$$

Using the notations introduced in (5) we obtain equation (7) and one can deduce (8) from (6).  $\square$

*Property 2.* Let  $u \in C(\mathbb{R}_+; L^2(0, 1))$  satisfy the heat equation and its boundary conditions in (1). The following time derivative formula holds if  $\partial_t u \in C(\mathbb{R}_+; L^2(0, 1))$ :

$$\begin{aligned} \frac{1}{\gamma} \frac{d}{dt} U_N(t) &= \frac{1}{\gamma} \text{Vect}_{k=0..N} \langle \partial_t u(t), \mathcal{L}_k \rangle \\ &= L_N^2 U_N(t) + L_N \mathbf{1}_N^* C X(t) - L_N \mathbf{1}_N u(1, t) \\ &\quad - \mathbf{1}_N^* u_x(0, t) \\ &= L_{2,N} U_{N-2}(t) + L_N \mathbf{1}_N^* C X(t) - L_N \mathbf{1}_N u(1, t) \\ &\quad - \mathbf{1}_N^* u_x(0, t) \\ &= \begin{bmatrix} C^\top \mathbf{1}_N^{*\top} L_N^\top \\ -\mathbf{1}_N^\top L_N^\top \\ -\mathbf{1}_N^{*\top} \\ L_{2,N}^\top \end{bmatrix}^\top \begin{bmatrix} X(t) \\ u(1, t) \\ u_x(0, t) \\ U_{N-2}(t) \end{bmatrix}. \end{aligned} \quad (10)$$

*Proof :* We obtain easily, using the heat equation and integrations by parts, along with the boundary (3) and derivation formulas of the Legendre polynomials, that

$$\frac{d}{dt} \langle u(t), \mathcal{L}_0 \rangle = -\gamma u_x(0, t),$$

$$\frac{d}{dt} \langle u(t), \mathcal{L}_1 \rangle = 2\gamma u(0, t) - 2\gamma u(1, t) + \gamma u_x(0, t),$$

$$\begin{aligned} \frac{d}{dt} \langle u(t), \mathcal{L}_k \rangle &= \gamma \sum_{j=1}^{k-1} \sum_{i=0}^{j-1} \ell_{kj}\ell_{ji} \langle u(t), \mathcal{L}_i \rangle + \gamma u(0, t) \times \\ &\quad \sum_{j=0}^{k-1} \ell_{kj} (-1)^j - \gamma u(1, t) \sum_{j=0}^{k-1} \ell_{kj} - \gamma u_x(0, t) (-1)^k \end{aligned}$$

for all  $k \geq 2$ . The notations introduced in (5) allow to conclude to equation (9). It is then easy to deduce (10) from (6).  $\square$

*Remark 3.* It is important to notice here that the main reason for the choice of a base of polynomials to truncate the infinite dimensional state  $u$  is the fact that the derivation matrices  $L_N$  and  $L_N^2$  are strictly lower triangular. It has interesting consequences on the stability study of the whole system (1) and is the cornerstone to obtain a hierarchy of tractable LMIs, in the same vein as in [23].

### 3.3 Bessel-Legendre Inequality

The following lemma provides a useful information.

*Lemma 2.* Let  $u \in C(\mathbb{R}_+; L^2(0, 1))$ . The following integral inequality holds for all  $N \in \mathbb{N}$ :

$$\|u(t)\|^2 \geq U_N(t)^\top \mathcal{I}_N U_N(t). \quad (11)$$

*Proof :* Estimate (11) can be called the Bessel-Legendre inequality. Since  $u(t) = \sum_{k \geq 0} \langle u(t), \mathcal{L}_k \rangle \mathcal{L}_k / \|\mathcal{L}_k\|^2$ , using the orthogonality of the Legendre polynomials and  $\|\mathcal{L}_k\|^2 = \langle \mathcal{L}_k, \mathcal{L}_k \rangle = 1/(2k+1)$ , we easily get

$$\int_0^1 u(x, t)^2 dx = \sum_{k \geq 0} \frac{\langle u(t), \mathcal{L}_k \rangle^2}{\|\mathcal{L}_k\|^2} \geq \sum_{k=0}^N (2k+1) \langle u(t), \mathcal{L}_k \rangle^2.$$

The formulation of Lemma 2 stems from notation (5).  $\square$

## 4. STABILITY ANALYSIS

### 4.1 Exponential stability result

Following the previous developments,  $N$  being a prescribed positive integer, we introduce an approximate state of size

$n + N + 1$ , composed by the state of the ODE system  $X$  and the projection of the infinite dimensional state  $u$  over the set of the Legendre polynomial of degree less than  $N$ . In other words, the approximate finite dimensional state vector is given by

$$\begin{bmatrix} X(t) \\ U_N(t) \end{bmatrix} = \begin{bmatrix} X(t) \\ \text{Vect}_{k=0..N} \langle u(t), \mathcal{L}_k \rangle \end{bmatrix}.$$

The main objective of this article is to provide the following stability result for the coupled system (1), which is based on an appropriate Lyapunov functional and the use of Property 2 and Lemma 2.

*Theorem 1.* Consider system (1) with a given thermal diffusivity  $\gamma > 0$ . If there exists an integer  $N \geq 0$ , such that there exist  $\delta > 0$ ,  $\alpha > 0$ ,  $P \in \mathcal{S}_n$ ,  $Q \in \mathbb{R}^{n, (N+1)m}$  and  $T \in \mathcal{S}_{(N+1)m}$  satisfying the following LMIs

$$\Phi_N = \begin{bmatrix} P & Q \\ Q^\top & T \end{bmatrix} \succ 0, \quad (12)$$

$$\Psi_N(\gamma) = \tilde{\Psi}_N - \alpha\gamma\Psi_{N,2} - 2\beta\gamma\Psi_{N,3} \prec 0, \quad (13)$$

where

$$\tilde{\Psi}_N = \begin{bmatrix} \Psi_{11} & PB - \gamma QL_N \mathbf{1}_N & \Psi_{13} & \Psi_{14} \\ * & 0 & -\beta B^\top C^\top & \Psi_{24} \\ * & * & 0 & -\gamma \mathbf{1}_N^{*\top} T \\ * & * & * & \Psi_{44} \end{bmatrix} \quad (14)$$

with  $\Psi_{11} = \text{He}(PA + \gamma QL_N \mathbf{1}_N^* C)$ ,  $\Psi_{13} = -\gamma Q \mathbf{1}_N^* - \alpha\gamma C^\top - \beta A^\top C^\top$ ,  $\Psi_{14} = A^\top Q + \gamma C^\top \mathbf{1}_N^{*\top} L_N^\top T + \gamma QL_N^2$ ,  $\Psi_{24} = B^\top Q - \gamma \mathbf{1}_N^\top L_N^\top T$ , and  $\Psi_{44} = \text{He}(\gamma L_N^{2\top} T)$ ,

$$\Psi_{N,2} = \begin{bmatrix} -C^\top \mathbf{1}_{N+1}^{*\top} \\ \mathbf{1}_{N+1}^\top \\ \mathbf{0}_{1,N+2} \\ -L_{1,N+1}^\top \end{bmatrix} \mathcal{I}_{N+1} \begin{bmatrix} -C^\top \mathbf{1}_{N+1}^{*\top} \\ \mathbf{1}_{N+1}^\top \\ \mathbf{0}_{1,N+2} \\ -L_{1,N+1}^\top \end{bmatrix}^\top \quad (15)$$

$$\Psi_{N,3} = \begin{bmatrix} C^\top \mathbf{1}_{N+2}^{*\top} L_{N+2}^\top \\ -\mathbf{1}_{N+2}^\top L_{N+2}^\top \\ -\mathbf{1}_{N+2}^{*\top} \\ L_{2,N+2}^\top \end{bmatrix} \mathcal{I}_{N+2} \begin{bmatrix} C^\top \mathbf{1}_{N+2}^{*\top} L_{N+2}^\top \\ -\mathbf{1}_{N+2}^\top L_{N+2}^\top \\ -\mathbf{1}_{N+2}^{*\top} \\ L_{2,N+2}^\top \end{bmatrix}^\top$$

then the coupled system (1) is exponentially stable. Indeed, there exist constants  $K > 0$  and  $\delta > 0$  such that:

$$E(t) \leq K e^{-\delta t} (\|X^0\|_n^2 + \|u^0\|^2), \quad \forall t > 0. \quad (16)$$

*Remark 4.* One can point out the robustness of the approach with respect to the triplet  $(A, B, \gamma)$ , meaning that we could have  $A, B$  and  $\gamma$  uncertain, switched, or time-varying... without losing the stability property. It suffices indeed then to test these LMIs at the vertices of a polytope defining the uncertainties of the triplet.

In order to reveal the approximate state  $U_N$  in the candidate Lyapunov functional  $V$  written in section 3.1, we select the functions  $Q$  and  $T$  as follows:  $Q(x) = \sum_{k=0}^N Q_k \mathcal{L}_k(x)$ , where  $\{Q_i\}_{i=0..N}$  belong to  $\mathbb{R}^n$  and  $T(x_1, x_2) = \sum_{i=0}^N \sum_{j=0}^N T_{ij} \mathcal{L}_i(x_1) \mathcal{L}_j(x_2)$ , where  $\{T_{ij} = T_{ji}^\top\}_{i,j=0..N}$  belong to  $\mathbb{R}$ . Therefore we can write

$$V_N(t) := V(X(t), u(t)) = \begin{bmatrix} X(t) \\ U_N(t) \end{bmatrix}^\top \begin{bmatrix} P & Q \\ Q^\top & T \end{bmatrix} \begin{bmatrix} X(t) \\ U_N(t) \end{bmatrix} + \alpha \int_0^1 |u(x, t)|^2 dx + \beta \int_0^1 |\partial_x u(x, t)|^2 dx, \quad (17)$$

where  $Q = [Q_0 \dots Q_N] \in \mathbb{R}^{n, N+1}$  and  $T = (T_{jk})_{j,k=0..N}$  in  $\mathbb{R}^{N+1, N+1}$ . In the following subsection, conditions for

exponential stability of the origin of system (1) can be obtained using the LMI framework. More particularly, we aim at proving that the functional  $V_N$  is positive definite and satisfies  $\dot{V}_N(t) + 2\delta V_N(t) \leq 0$  for a prescribed  $\delta > 0$  and under the LMIs of Theorem 1.

#### 4.2 Proof of the Stability Theorem

The proof consists in showing that, if the LMIs (12) and (13) are verified for a given  $N \geq 0$ , then there exist three positive scalars  $\varepsilon_1, \varepsilon_2$  and  $\varepsilon_3$  such that for all  $t > 0$ ,

$$\varepsilon_1 E(t) \leq V_N(t) \leq \varepsilon_2 E(t), \quad (18)$$

$$\dot{V}_N(t) \leq -\varepsilon_3 E(t). \quad (19)$$

Indeed, on the one hand, it suffices to notice that we obtain directly from (18) and (19)  $\dot{V}_N(t) + \frac{\varepsilon_3}{\varepsilon_2} V_N(t) \leq 0$  so

that  $\frac{d}{dt} (V_N(t) e^{\varepsilon_3 t / \varepsilon_2}) \leq 0$  and integrating in time, we get  $V_N(t) \leq V_N(0) e^{-\varepsilon_3 t / \varepsilon_2}$  for all  $t \geq 0$ . On the other hand, from (18), we can finally write

$$\varepsilon_1 E(t) \leq V_N(t) \leq V_N(0) e^{-\varepsilon_3 t / \varepsilon_2} \leq \varepsilon_2 E(0) e^{-\varepsilon_3 t / \varepsilon_2},$$

allowing to conclude (16).

**Existence of  $\varepsilon_1$ :** Since  $\alpha > 0$ ,  $\beta > 0$  and  $\Phi_N \succ 0$ , there exists a sufficiently small  $\varepsilon_1 > 0$  such that  $\varepsilon_1 \leq \alpha$ ,  $\varepsilon_1 \leq \beta$  and  $\Phi_N = \begin{bmatrix} P & Q \\ Q^\top & T \end{bmatrix} \succ \varepsilon_1 \begin{bmatrix} I_n & 0 \\ 0 & 0 \end{bmatrix}$ . Therefore, we obtain a lower bound of  $V_N$  depending on the energy  $E(t)$ :

$$V_N(t) \geq \varepsilon_1 (\|X(t)\|_n^2 + \|u(t)\|^2) + \beta \|\partial_x u(t)\|^2 \geq \varepsilon_1 E(t).$$

**Existence of  $\varepsilon_2$ :** There exists a sufficiently large scalar  $\lambda > 0$  such that  $\begin{bmatrix} P & Q \\ Q^\top & T \end{bmatrix} \leq \lambda \begin{bmatrix} I_n & 0 \\ 0 & I_N \end{bmatrix}$ , yielding

$$V_N \leq \lambda \|X\|_n^2 + \lambda U_N^\top \mathcal{I}_N U_N + \alpha \|u\|^2 + \beta \|\partial_x u\|^2.$$

Applying Lemma 2 to the second term of the right-hand side ensures that with  $\varepsilon_2 = \max\{\lambda_{\max} \begin{bmatrix} P & Q \\ Q^\top & T \end{bmatrix} + \alpha, \beta\}$ , one has  $V_N(t) \leq \varepsilon_2 E(t)$ .

**Existence of  $\varepsilon_3$ :** In order to prove now that (19) relies on the solvability of the LMI (13), we need to define an augmented approximate state vector of size  $n + N + 3$  given by  $\xi_N(t) = [X(t)^\top, u(1, t), u_x(0, t), U_N(t)^\top]^\top$ . For simplicity, we omit the variable  $t$  in the sequel.

*Step 1:* Let us split the computation of  $\dot{V}_N$  into three terms, namely  $\dot{V}_{N,1}$ ,  $\dot{V}_{N,2}$  and  $\dot{V}_{N,3}$  corresponding to each term of  $V_N$  in (17). On the one hand, using the first equation in system (1) and Property 2, we have :

$$\frac{d}{dt} \begin{bmatrix} X \\ U_N \end{bmatrix} = \begin{bmatrix} AX + Bu(1) \\ \gamma L_N^2 U_N + \gamma L_N \mathbf{1}_N^* CX - \gamma L_N \mathbf{1}_N u(1) - \gamma \mathbf{1}_N^* u_x(0) \end{bmatrix}$$

so that we can calculate

$$\dot{V}_{N,1} = \frac{d}{dt} \left( \begin{bmatrix} X \\ U_N \end{bmatrix}^\top \begin{bmatrix} P & Q \\ Q^\top & T \end{bmatrix} \begin{bmatrix} X \\ U_N \end{bmatrix} \right) = \xi_N^\top \Psi_{N,1}(\gamma) \xi_N$$

with  $\Psi_{N,1} = \begin{bmatrix} \Psi_{11} & PB - \gamma QL_N \mathbf{1}_N & -\gamma Q \mathbf{1}_N^* & \Psi_{14} \\ * & 0 & 0 & \Psi_{24} \\ * & * & 0 & -\gamma \mathbf{1}_N^{*\top} T \\ * & * & * & \Psi_{44} \end{bmatrix}$  where  $\Psi_{11}, \Psi_{14}, \Psi_{24}$  and  $\Psi_{44}$  are defined in Theorem 1.

On the other hand, using the heat equation in (1), and an integration by parts, we get both

$$\begin{aligned}
\dot{V}_{N,2} &= \alpha \int_0^1 \partial_t (|u(x)|^2) dx = 2\alpha \int_0^1 u(x) \partial_t u(x) dx \\
&= 2\alpha\gamma \int_0^1 u(x) \partial_{xx} u(x) dx \\
&= -2\alpha\gamma \int_0^1 |\partial_x u(x)|^2 dx + 2\alpha\gamma [u \partial_x u]_0^1 \\
&= -2\alpha\gamma \|\partial_x u\|^2 - 2\alpha\gamma C X u_x(0)
\end{aligned}$$

and

$$\begin{aligned}
\dot{V}_{N,3} &= \beta \int_0^1 \partial_t (|\partial_x u(x)|^2) dx = 2\beta \int_0^1 \partial_{tx} u(x) \partial_x u(x) dx \\
&= -2\beta \int_0^1 \partial_t u(x) \partial_{xx} u(x) dx + 2\beta [\partial_t u \partial_x u]_0^1 \\
&= -2\frac{\beta}{\gamma} \int_0^1 |\partial_t u(x)|^2 dx - 2\beta \partial_t u(0) \partial_x u(0) \\
&= -2\frac{\beta}{\gamma} \|\partial_t u\|^2 - 2\beta \partial_x u(0) C (AX + Bu(1)).
\end{aligned}$$

Merging the expressions of  $\dot{V}_{N,1}$ ,  $\dot{V}_{N,2}$  and  $\dot{V}_{N,3}$  yields

$$\begin{aligned}
\dot{V}_N &= \xi_N^\top \Psi_{N,1}(\gamma) \xi_N - 2\alpha\gamma \|\partial_x u\|^2 - 2\frac{\beta}{\gamma} \|\partial_t u\|^2 \\
&\quad - 2\alpha\gamma C X u_x(0) - 2\beta \partial_x u(0) C (AX + Bu(1)) \\
&= \xi_N^\top \tilde{\Psi}_N(\gamma) \xi_N - 2\alpha\gamma \|\partial_x u\|^2 - 2\frac{\beta}{\gamma} \|\partial_t u\|^2 \quad (20)
\end{aligned}$$

where  $\tilde{\Psi}_N(\gamma)$  is defined in (14).

*Step 2:* Let us explain here how we can deal with the terms  $\|\partial_x u(t)\|^2$  and  $\|\partial_t u(t)\|^2$ . Following the proof of Lemma 2, up to the order  $N + 1$ , we can write, using an integration by parts and the derivation formula in Property 1 of the Legendre polynomial

$$\begin{aligned}
\|\partial_x u\|^2 &\geq \sum_{k=0}^{N+1} (2k+1) |\langle \partial_x u, \mathcal{L}_k \rangle|^2 \\
&\geq \begin{bmatrix} X \\ u(1) \\ U_N \end{bmatrix}^\top \begin{bmatrix} -C^\top \mathbf{1}_{N+1}^* \\ \mathbf{1}_{N+1}^\top \\ -L_{1,N+1}^\top \end{bmatrix} \mathcal{I}_{N+1} \begin{bmatrix} -C^\top \mathbf{1}_{N+1}^* \\ \mathbf{1}_{N+1}^\top \\ -L_{1,N+1}^\top \end{bmatrix}^\top \begin{bmatrix} X \\ u(1) \\ U_N \end{bmatrix}
\end{aligned}$$

One can deduce that with  $\Psi_{N,2}$  defined in (15),

$$-\|\partial_x u(t)\|^2 \leq -\xi_N^\top(t) \Psi_{N,2} \xi_N(t). \quad (21)$$

Similarly, using Property 2 and Lemma 2 up to the order  $N + 2$ , we have

$$\begin{aligned}
\frac{1}{\gamma} \|\partial_t u(t)\|^2 &\geq \frac{1}{\gamma} \frac{dU_{N+2}^\top}{dt} \mathcal{I}_{N+2} \frac{dU_{N+2}}{dt} \\
&\geq \gamma \begin{bmatrix} X \\ u(1) \\ u_x(0) \\ U_N \end{bmatrix}^\top \Psi_{N,3} \begin{bmatrix} X \\ u(1) \\ u_x(0) \\ U_N \end{bmatrix}
\end{aligned}$$

with  $\Psi_{N,3}$  defined in (15) so that

$$-\frac{1}{\gamma} \|\partial_t u(t)\|^2 \leq -\gamma \xi_N^\top(t) \Psi_{N,3} \xi_N(t). \quad (22)$$

*Step 3:* Since we assume  $\Psi_N \prec 0$ , then choosing  $\varepsilon = \lambda_{\min}(-\Psi_N)/2$ , we get  $\Psi_N \prec -\varepsilon \begin{bmatrix} I_n & 0 & 0 & 0 \\ * & 2 & 0 & 0 \\ * & * & 0 & 0 \\ * & * & * & 0 \end{bmatrix}$ . Therefore, we can write from (20), (21) and (22), choosing  $\varepsilon_3 = \min \{ \frac{1}{3} \alpha \gamma, \lambda_{\min}(-\Psi_N)/2 \}$ ,

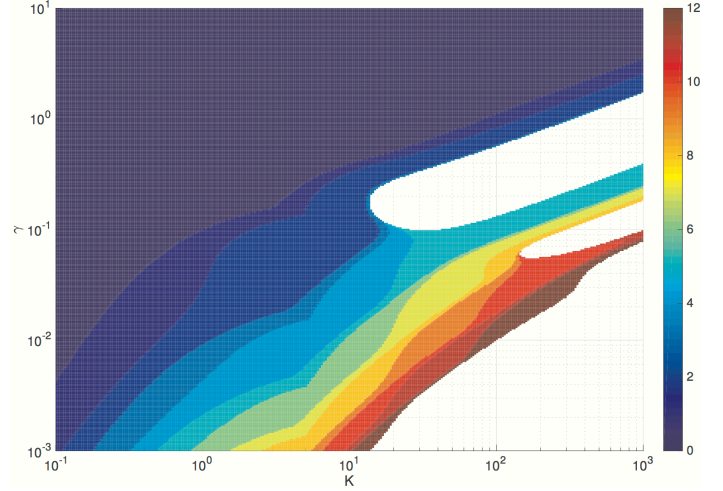


Fig. 1. Stability region in the plan  $(K, \gamma)$ , obtained using Theorem 1 for  $N = 0, \dots, 12$ .

$$\begin{aligned}
\dot{V}_N(t) &\leq \xi_N^\top(t) \tilde{\Psi}_N \xi_N(t) - \alpha\gamma \|\partial_x u(t)\|^2 - 2\frac{\beta}{\gamma} \|\partial_t u(t)\|^2 \\
&\quad - 3\varepsilon_3 \|\partial_x u(t)\|^2 \\
&\leq \xi_N^\top(t) \left( \tilde{\Psi}_N - \alpha\gamma \Psi_{N,2} - 2\beta\gamma \Psi_{N,3} \right) \xi_N(t) \\
&\quad - 3\varepsilon_3 \|\partial_x u(t)\|^2 \\
&\leq \xi_N^\top(t) \Psi_N \xi_N(t) - 3\varepsilon_3 \|\partial_x u(t)\|^2 \\
&\leq -\varepsilon_3 |X(t)|_n^2 - 2\varepsilon_3 |u(1)|^2 - 3\varepsilon_3 \|\partial_x u(t)\|^2.
\end{aligned}$$

Finally, since one can easily prove that for any  $u \in H^1(0, 1)$ ,

$$\|u\|^2 \leq 2|u(1)|^2 + 2\|\partial_x u\|^2,$$

we obtain

$$\dot{V}_N(t) \leq -\varepsilon_3 |X(t)|_n^2 - \varepsilon_3 \|u(t)\|^2 - \varepsilon_3 \|\partial_x u(t)\|^2$$

which is precisely (19). One can therefore conclude to the exponential stability of system (1).

## 5. NUMERICAL EXAMPLE

Our goal here is to propose a numerical illustration that can highlight the possibilities and tractability of the stability LMI tests provided by Theorem 1. Hence, we are presenting an example where the closed-loop system depends on two parameters : the thermal diffusivity  $\gamma$  of the heat equation and a parameter  $K$ . This numerical example is formerly issued from the field of time delay systems (see e.g. [24]) and  $K$  enters the model as follows:

$$A = \begin{bmatrix} 0 & 0 & 1 & 0 \\ -10-K & 10 & 0 & 1 \\ 0 & 0 & 0 & 0 \\ 5 & -15 & 0 & -0.25 \end{bmatrix}, \quad B = \begin{bmatrix} 0 \\ 0 \\ 1 \\ 0 \end{bmatrix}, \quad C = \begin{bmatrix} K \\ 0 \\ 0 \\ 0 \end{bmatrix}^\top.$$

This data triplet  $(A, B, C)$  has indeed already been considered in the context of time delay systems where the delayed matrix is  $A_d = BC$ . The main motivation for studying this example arises from the fact the stability region has a very complicated shape, that is hard to detect using a Lyapunov-Krasovskii functional approach. We will see that the stability region is difficult to detect as well for our system (1) with these values for  $A, B, C$ .

In order to illustrate the potentialities of Theorem 1, we have proposed Figure 1, depicting in the plan  $(K, \gamma)$  and

in logarithmic scales, for which values of  $N$  solutions to the LMI problem (12-13) have been found. The white area corresponds to values of  $(K, \gamma)$  for which no solutions have been obtained for  $N < 13$ . The darkest area corresponds to the stability region obtained with  $N = 0$  in Theorem 1. The general tendency presented in Figure 1 is that for large values of  $\gamma$ , stability is guaranteed. However, for small values of  $\gamma$ , peculiar stability regions are detected. One can see that increasing  $N$  in Theorem 1 allows to enlarge the stability regions as illustrated in the hierarchical structure of LMIs (12-13). Interestingly, Figure 1 also detects two instability zones, where (12) or (13) are not solvable, even for larger values of  $N$ .

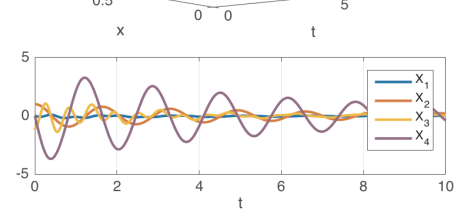
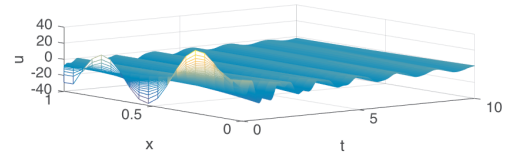
*Remark 5.* Figure 1 has also the interest of illustrating the hierarchy that our approach suggests. One sees clearly the progression of the guaranteed domain of stability with the increase of  $N$ .

In order to illustrate the stability regions depicted in Figure 1, several temporal simulations of the coupled-system have been provided in Figure 2. They correspond to system (1) with the same numerical values  $(A, B, C)$  and the particular choice of  $K = 100$ . This selection of  $K$  is relevant since there is an interval of values of  $\gamma$  included in  $[0.1, 0.2]$  such that the LMIs conditions of Theorem 1 are not verified even for large values of  $N$ . Under the initial conditions  $u^0(x) = CX^0 - 20x(x - 2) + 10(1 - \cos(8\pi x))$  and  $X^0 = [0 \ 1 \ -1 \ 0]$ , and noting that this is compatible with the requirements  $u^0(0) = CX^0$  and  $\partial_x u^0(1) = 0$ , three simulations are provided with

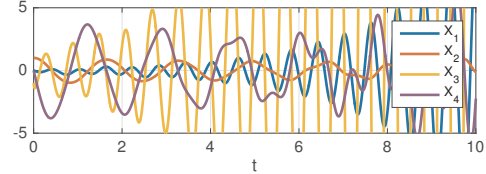
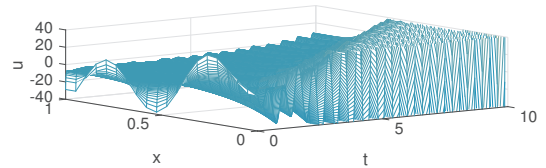
- (a)  $\gamma = 1$ , corresponding to a stable region according to Theorem 1 with  $N = 0$ ;
- (b)  $\gamma = 0.2$ , corresponding to a region for which Theorem 1 has no solution for any  $N \leq 12$ ;
- (c)  $\gamma = 0.05$ , which, according to Theorem 1 with  $N \geq 5$ , is exponentially stable.

Simulations of the coupled ODE - Heat PDE have been performed using classical tools available in the literature. The ODE has been discretized using a Runge-Kutta algorithm of order 4 with a principal step  $\delta_t$ . The PDE have been simulated by performing a backward in time central order difference in space with a step  $\delta_x$ , with  $\delta_t \leq \delta_x^2/(2\gamma)$  and  $\delta_x = 1/20$  to ensure the numerical stability of the approximation.

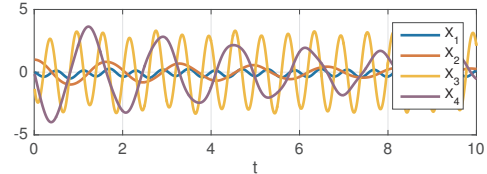
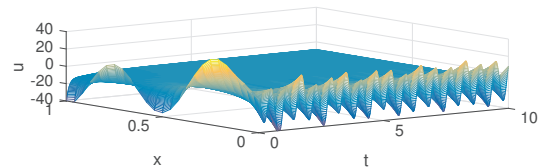
Figure 2(a) obviously shows the stable behaviors detected by Theorem 1 with  $N = 0$ , with a quite fast convergence to the equilibrium. The illustration of the second case Figure 2(b) is consistent with Figure 1, since the solution of this system diverges. This is consistent with the fact that no solutions to the conditions of Theorem 1 can be found for any  $N \leq 12$ . More interestingly, the last situation, presented in Figure 2(c), shows simulations results which are very slowly converging to the origin, with however a lightly damped oscillatory behavior of the state of the ODE and of the PDE close to the boundary  $x = 0$ . On the other side, the state function  $u(x, t)$  for sufficiently large values of  $x$  is clearly smooth and converges slowly to the origin. Actually, case (c) illustrates a situation where a very small diffusion coefficient  $\gamma$  induces a slow convergent behavior for which the conditions of Theorem 1 are only fulfilled for a large parameter  $N \geq 5$ . This may indicate a



(a) Simulations results obtained with  $\gamma = 1$ .



(b) Simulations results obtained with  $\gamma = 0.2$ .



(c) Simulations results obtained with  $\gamma = 0.05$ .

Fig. 2. Evolution of the state  $(X, u)$  with respect to time with  $K = 100$  and for several values of  $\gamma$ .

correlation between the energy decay rate and the smallest  $N$  for which the LMIs are verified.

## 6. CONCLUSION AND FUTURE WORKS

This article has provided a new and fruitful approach to numerically check the exponential stability of coupled ODE - Heat PDE systems. Our approach relies on the efficient construction of specific Lyapunov functionals allowing to derive diffusion parameter-dependent stability conditions. These tractable conditions of stability are expressed in terms of LMIs and obtained using the Bessel inequality. This work is a first contribution in the study of coupled ODE-Heat PDE systems using this framework and has the ambition to provide a method that could prove to be robust and useful in more intricate situations, such as other parabolic PDEs (e.g. in [12], [6] or reaction-diffusion,



Kuramoto-Sivashinski...), or vectorial infinite dimensional state  $u$  to handle MIMO systems. A very interesting but challenging question is also the study of the convergence of our result when the order  $N$  of truncation grows. We would like to prove that if the stability of the coupled system holds, then there exists an order  $N$  for which our LMIs are verified. Future research will also include the study of the robustness of our technique with respect to the whole data quadruplet  $(A, B, C, \gamma)$ . Another possible direction would consist in the inclusion of different and more general formulation of the boundary conditions, which includes Neumann, Robin and Dirichlet type of boundary constraints and coupling conditions.

## REFERENCES

- [1] O. M. Aamo. Disturbance rejection in 2 x 2 linear hyperbolic systems. *IEEE Transactions on Automatic Control*, 58(5):1095–1106, May 2013.
- [2] M. Ahmadi, G. Valmorbida, and A. Papachristodoulou. Dissipation inequalities for the analysis of a class of PDEs. *Automatica*, 66:163 – 171, 2016.
- [3] M. Barreau, A. Seuret, F. Gouaisbaut, and L. Baudouin. Lyapunov stability analysis of a string equation coupled with an ordinary differential system. *IEEE Transactions on Automatic Control, Early Access*, 2018.
- [4] G. Bastin and J. M. Coron. *Stability and Boundary Stabilization of 1-D Hyperbolic Systems*, volume 88 of *Progress in Nonlinear Differential Equations and their Applications*. Birkhäuser/Springer, 2016. Subseries in Control.
- [5] L. Baudouin, A. Seuret, F. Gouaisbaut, and M. Dattas. Lyapunov stability analysis of a linear system coupled to a heat equation. In *IFAC 20th world congress, Toulouse*, 2017.
- [6] D. M. Boskovic, M. Krstic, and W. Liu. Boundary control of an unstable heat equation via measurement of domain-averaged temperature. *IEEE Transactions on Automatic Control*, 46(12):2022–2028, Dec 2001.
- [7] H. Brezis. *Analyse fonctionnelle*. Collection of Applied Mathematics for the Master’s Degree. Masson, Paris, 1983. Théorie et applications.
- [8] R. Courant and D. Hilbert. *Methods of Mathematical Physics*. John Wiley & Sons, Inc., 1989.
- [9] R. Curtain and H. Zwart. *An Introduction of Infinite-dimensional Linear System Theory*, volume 21. Springer-Verlag New York, 1995.
- [10] J. Daafouz, M. Tucsnak, and J. Valein. Nonlinear control of a coupled pde/ode system modeling a switched power converter with a transmission line. *Systems & Control Letters*, 70:92–99, 2014.
- [11] B. d’Andréa Novel, F. Boustany, F. Conrad, and B. P. Rao. Feedback stabilization of a hybrid PDE-ODE system: Application to an overhead crane. *Mathematics of Control, Signals and Systems*, 7(1):1–22, 1994.
- [12] W. A. Day. A decreasing property of solutions of parabolic equations with applications to thermoelasticity. *Quarterly of Applied Mathematics*, 40(4):468–475, 1983.
- [13] L.C. Evans. *Partial differential equations*, volume 19 of *Graduate Studies in Mathematics*. American Mathematical Society, Providence, RI, 2010.
- [14] E. Fridman. *Introduction to time-delay systems: Analysis and control*. Springer, 2014.
- [15] E. Fridman and Y. Orlov. Exponential stability of linear distributed parameter systems with time-varying delays. *Automatica*, 45(1):194–201, 2009.
- [16] A. Gahlawat and M. M. Peet. A convex sum-of-squares approach to analysis, state feedback and output feedback control of parabolic pdes. *IEEE Transactions on Automatic Control*, 62(4):1636–1651, 2017.
- [17] K. Gu, V. L. Kharitonov, and J. Chen. *Stability of Time-Delay Systems*. Birkhäuser Boston, 2003. Control engineering.
- [18] A. Hasan, O.M. Aamo, and M. Krstic. Boundary observer design for hyperbolic pde–ode cascade systems. *Automatica*, 68(Supplement C):75 – 86, 2016.
- [19] M. Krstic. *Delay compensation for nonlinear, adaptive, and PDE systems*. Birkhäuser Boston, 2009.
- [20] K.A. Morris. Design of finite-dimensional controllers for infinite-dimensional systems by approximation. *Journal of Mathematical Systems, Estimation, and Control*, 4(2):1–30, 1994.
- [21] A. Papachristodoulou and M. M. Peet. On the analysis of systems described by classes of partial differential equations. In *Proceedings of the 45th IEEE Conference on Decision and Control*, pages 747–752, 2006.
- [22] C. Prieur and F. Mazenc. ISS-Lyapunov functions for time-varying hyperbolic systems of balance laws. *Math. of Control, Signals, and Systems*, 24(1):111–134, 2012.
- [23] A. Seuret and F. Gouaisbaut. Hierarchy of LMI conditions for the stability of time delay systems. *Systems & Control Letters*, 81:1–7, 2015.
- [24] R. Sipahi, S.-I. Niculescu, C.T. Abdallah, W. Michiels, and K. Gu. Stability and Stabilization of Systems with Time Delay. *IEEE Control Systems*, 31(1):38-65, 2011.
- [25] G.A. Susto and M. Krstic. Control of PDE-ODE cascades with Neumann interconnections. *J. Franklin Inst.*, 347(1):284–314, 2010.
- [26] S. Tang and C. Xie. State and output feedback boundary control for a coupled PDE/ODE system. *Systems & Control Letters*, 60(8):540 – 545, 2011.