



HAL
open science

Self-service Systems Performance Evaluation and Improvement Model

Darius Dilijonas, Virgilijus Sakalauskas

► **To cite this version:**

Darius Dilijonas, Virgilijus Sakalauskas. Self-service Systems Performance Evaluation and Improvement Model. 11th Conference on e-Business, e-Services, and e-Society (I3E), Oct 2011, Kaunas, Lithuania. pp.87-98, 10.1007/978-3-642-27260-8_7. hal-01560868

HAL Id: hal-01560868

<https://hal.science/hal-01560868>

Submitted on 12 Jul 2017

HAL is a multi-disciplinary open access archive for the deposit and dissemination of scientific research documents, whether they are published or not. The documents may come from teaching and research institutions in France or abroad, or from public or private research centers.

L'archive ouverte pluridisciplinaire **HAL**, est destinée au dépôt et à la diffusion de documents scientifiques de niveau recherche, publiés ou non, émanant des établissements d'enseignement et de recherche français ou étrangers, des laboratoires publics ou privés.



Distributed under a Creative Commons Attribution 4.0 International License

Self-service Systems Performance Evaluation and Improvement Model

Darius Dilijonas, Virgilijus Sakalauskas

Department of Informatics, Vilnius University, Muitines 8, 44280 Kaunas, Lithuania
{virgilijus.sakalauskas, darius.dilijonas}@khf.vu.lt

Abstract. The paper analyses the topic of service system productivity and profitability. Main focus of the research is self-service area, namely, the increase of ATM network productivity. Paper presents performance evaluation of self-service systems and improvement model for its increasing profitability. This model combines internal and external quality criteria and provides detailed understanding of the main components of productivity evaluation and methods. Using the model it is possible to create evaluation and improvement tools for increasing productivity of self-service systems. Experimental result shows that using the developed productivity model, ANN method and optimization procedure, productivity of ATM cash management could be increased by approximately 33 percent.

Keywords: Self-service, ATM, productivity, profitability, ANN.

1 Introduction

Globalization and market liberalization imply changes in basic economic understanding. Organizations begin to realize that the essential issue is not just profit maximization but profit maximization by increasing consumers' satisfaction with the provided services. At present, not just the delivery of services is important; more attention is given to the way of providing the services. Development of information technologies significantly impacts the render of services and the entire sector of services. Consumers now have more information and better understanding of any service, therefore, the competition between service providers is determined by quality, and quality determines profitability [1]. Gartner [2] notices, that there have been major changes in the service sector. Traders are beginning to realize that technologies may have critical importance for the increase of profit and operational efficiency.

The paper analyses the topic of service system productivity and profitability. The work focuses on self-service area, namely, the increase of ATM network productivity. The profitability of electronic service systems depends on their productivity and quality of the services provided. It is possible to ensure the productivity of service systems by efficient planning and by improving delivery process. In order to avoid affecting delivery process in service systems, it is very important to make timely decisions. It is impossible to store services like goods; therefore, inadequate decisions are related to the direct loss of income and quality decrease.

The productivity of electronic services may be ensured by implementing advanced real-time decision management systems and by changing the realization of service system quality from traditional to predictive. The quality of such systems is ensured by predicting service system behavior. Multi-agent technologies are used for data collection from distributed service points [3]. Intelligent agents evaluate the demand of service system resources according to the collected data, and plan the work to have sufficient resources for services and to maintain high quality and maximum system availability. Applying intelligent systems of resource planning and optimization, the work of service system must be managed in real time. Certainly, without service quality and productivity management models and systems, the mentioned measures are only the tools; therefore performance management models should be applied as well.

The goal of the research is to perform evaluation of self-service systems and to develop improvement model for increasing its profitability. Service system profitability increases when improves the quality of provided services and decrease supply costs. Due to insufficient level of their computerization, the developed method may be hardly applied for rendering traditional services. Therefore, more restricted area of service systems is analyzed in the paper - self-service facility systems – ATM networks.

The second section of the paper presents analysis of the literature concerning service systems productivity. The self-service systems performance evaluation model is described in the third section. The forecasting and optimization methods are described in the fourth section. According to presented evaluation model, fifth section provides detailed description of experimental results of ATM networks profitability simulation.

2 Service Systems Productivity

The concept of productivity in service area started to be analyzed only at the end of the XX century. Service sector is one of the fastest growing economy segments [4]; still only few empirical surveys have been conducted in productivity management area. Gronroosa [5], Chase and Haynes [6] structured the elements of service productivity theory. They analyzed the similarities and differences of production and service productivity, and formulated the main definitions of service productivity. Ojasalo [7] structured the model of service productivity. Sherman [8] defined service productivity components. Seth [1] carried out survey on quality management models, developed in the period of 1984-2003. It is obvious that service delivery process changes from traditional to the one reasoned by information technologies. Application of information technologies in service quality management is becoming highly important. Service sector productivity depends on technologies and process automation measures [9], at present this tendency is even more significant because the competition in service sector is increasing. Service delivery through self-service terminals or computer systems allows increasing the efficiency of service system and the quality of providing services. It is obvious that higher profitability is typical for efficiently operating systems [8].

Semeijn and others [10] showed that the work of servicing system is none the less important than the e-service system itself. Implementation of the best and most functional ATMs cannot ensure high level of self-service facilities without an appropriately functioning service system. Voss's [11] survey shows that service quality expectations in retail banking only approximately fulfill the service received. Problems, which appear in service systems, may disturb delivery process [12]; in most cases unavailable services greatly reduce the loyalty of a service [13]. For this reason it is important to combine internal and external quality criteria. Only one or another group of criteria is usually analyzed in literature, and a common model of self-service network quality is not provided.

Productivity evaluation system of e-services is discussed by Gronroos [5]; Ojasalo, [7]; Rutkauskas et al. [14]. Service productivity management is a very important topic, but very little empirical research has been carried out in this area [15]. Productivity consists of 4 components [8]: price, resource allocation, technological and scale efficiency. The main dilemma of productivity is balancing of revenue and costs [16]. Depending on demand, it is necessary to ensure efficient use of resources because services cannot be stored. Productivity is divided into internal and external. Internal productivity describes how efficiently resources are used. External productivity shows what service profitability is. Services productivity is the balance of external and internal efficiency [6]. Another important element of productivity is demand management or capacity efficiency, because supplier cannot store services [5]. Capacity efficiency shows how efficiently system internal resources satisfy the demand. The process of services is an open system therefore application of traditional efficiency evaluation systems may determine false results. Productivity may be evaluated totally or partially. According to Gronroos [5], the only theoretically and practically significant way to calculate services productivity is financial measures.

Internal quality of a system is ensured by using advanced management tools, that allow optimizing operational costs and service delivery process, and by using internal quality management systems, which are based on sets of productivity criteria. Clearly detailed productivity criteria of ATM network internal quality management systems are analyzed in articles of Aldlaigan and Buttle [17], Bahia and Nantel [18], Jabnoun and Al-Tamimi [19], Joseph and Stone [20]. In order to ensure external quality, process development measures and external quality management systems are necessary. External quality management systems were analyzed by Lovelock [21], Johnston and Clark [22], Edvardsson and others [23], they settled value-based service quality management models, which analyze economic and social service delivery aspects.

3 Self-service Systems Performance Evaluation

The main quality evaluation criteria of self-service systems were analyzed by Aldlaigan and Buttle [17], Bahia and Nantel [18], Jabnoun and Al-Tamimi [19], Joseph and Stone [20]. Most authors distinguish 5 criteria, which make the basics of ATM service quality: sufficient size of ATM network, safe environment, user-friendly connection, convenient allocation, and ATM functionality. Evaluation of

service delivery should be carried out according to the criteria of e-service benefit/value: environmental features, security, communication speed, reliability, customer support, responsiveness, information completeness, availability, delivery and personalization [24].

The figure 1 shows the model of self-service system performance criteria; the model elaborates productivity components and sets out methodologies, which may be applied to ensure internal, external and capacity efficiency. It was found that internal productivity of self-service terminals may be increased by using cheaper maintenance resources if it does not have negative impact on quality, also by implementing more advanced technological decisions, and by optimal distribution of resources. Service resources may be optimized the way that their amount in self-service infrastructure would always satisfy the demand, therefore it is necessary to know what the demand will be, and forecast tools used for its determination. Knowing the demand, it is possible to foresee necessary amount of resources, and this is especially important in such service systems, where resources are of short validity or are realizable and can be used to earn income by another way.

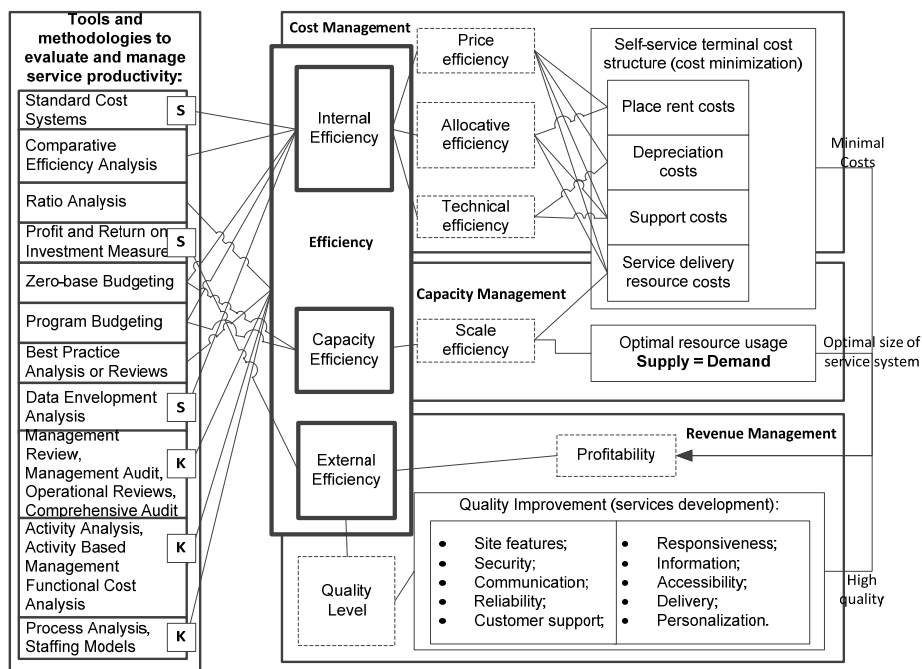


Fig. 1. Self-service system performance criteria model

Productivity is comprised of several components that independently influence the overall efficiency of the organization. The components are 1) price efficiency, 2) allocative efficiency, 3) technical efficiency, and 4) scale efficiency [8]. *Price efficiency* requires purchasing the inputs that meet the quality standard at the lowest price. *Allocative efficiency* is the use of the optimal mix of inputs to produce the products or services. *Technical inefficiency* exists when it is possible to produce more

outputs with the inputs used or where it is possible to produce the actual outputs with fewer inputs. *Scale efficiency* is the component that addresses the optimal activity volume level, producing more or less goods or services than the optimal level results in added costs solely due to volume or size [8].

Different management tools and methodologies can be used to evaluate and manage service productivity. In model, these tools are classified by three categories: K – Qualitative, S – Quantitative and without marking both K/S.

The model line connecting the methodology and the performance component shows which technique is applicable to evaluate performance of specific component. The external productivity consists of profitability and quality evaluation criteria's.

Self-service Systems Performance Assessment Model

Productivity may be evaluated by physical, financial and combined measures; they may totally or partially evaluate productivity [7]. All productivity evaluation criteria may be derived from them (Table 1), in accordance with the self-service systems performance criteria model.

Table 1. Self-service systems productivity evaluation criteria's.

<i>Evaluation criteria</i>	<i>Features¹</i>	<i>Component²</i>	<i>Type³</i>
Maximum Capacity = work time / average duration of one transaction	FIZ	MEF	DP
System Load = Number of transactions performed / work time maximum limitation under the load condition	FIZ	MEF	DP
“Freeze” Resources = returned or lost resources / all resources rating per terminal	FIZ	MEF	DP
Availability = no working time / total hours worked rating per terminal	FIZ	TNAS	DP
Reliability = failed transactions / total transactions rating per terminal	FIZ	TNAS	DP
Total Maximum Load = (work time / average time of one transactions) * number of terminals maximum limitation under the overall load condition;	FIZ	MEF	PP
Total Load = number of transactions performed / total amount of resources;	FIZ	MEF	PP
Total “Freeze” Resources = returned or lost resources / all resources rating for all terminals	FIZ	MEF	PP
Total Availability = no working time / total hours worked rating for all terminals	FIZ	TNAS	PP
Total Reliability = failed transactions / total transactions rating for all terminals	FIZ	TNAS	PP
Support Performance = [revenue of services = (transaction price + sold product)] / labor costs	FIN	KNAS	DP

¹ Features: FIZ - physical, FIN - financial, KOM - combined;

² Component: KNAS - Price efficiency; IPNAS - Allocative efficiency; TNAS - Technical efficiency ; MEF - Scale efficiency; PEL – Profitability;

³ Type: PP – total productivity; DP - partially productivity;

<i>Evaluation criteria</i>	<i>Features¹</i>	<i>Component²</i>	<i>Type³</i>
rating for all terminals; Service delivery efficiency = [revenue of service = (transaction price + sold product)] / all costs rating for all terminals;	FIN	KNAS	PP
Terminals Revenue Productivity = revenue of services = (transaction price + sold product) / number of terminals	KOM	PEL	DP
Terminal Cost Efficiency = number of transactions performed / resource costs	KOM	IPNAS	PP
Productivity = number of transactions or sold product units / (outsourcing, depreciation, maintenance, support or services delivery costs)	KOM	KNAS	DP

DEA analysis [8] is most suitable for evaluation of internal performance of self-service systems.

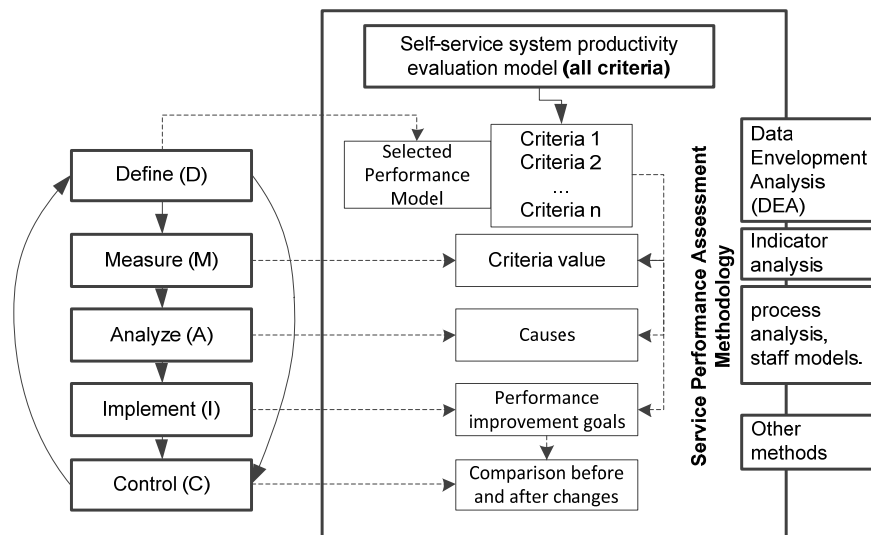


Fig. 2. The model of self-service system performance assessment

Electronic services quality model is applied for the evaluation of external performance of self-service systems [25]. This model provides full set of criteria for the assessment of service content and functionality. IT-based model [26], which assesses IT importance for the delivery of services, is applied for evaluation of social aspects: age, mood for using e-services.

The figure 2 presents self-service system performance model. Self-service system performance assessment model needs to be formulated in accordance with the criteria, formulated in the table 1. First the calculations are prepared and then the most appropriate evaluation criteria are selected. Following this, the productivity model is developed and simulations consisting real data are done. The obtained results are evaluated by comparing the results between ATM's. After analysis of the results, the

reasons for low productivity are identified. Eventually tools have to be prepared to eliminate the causes of low productivity. The goals are set for performance improvement. After the changes and improvement are made, the comparison has to be done, in order to evaluate whether the realized changes increased productivity.

4 Profitability Simulation

This section describes experimental results of ATM network profitability analysis, using proposed performance evaluation methods and models.

4.1 Artificial Neural Network Model of Demand Forecasting

A flexible neural network model has been created, which changes its structure depending on situation and is used to forecast self-service facility demand. Considering the forecast results, the optimization procedure foresees optimal resource loads of ATM network.

In our past researches we have already presented experimental research of ANN model [27]. We came to the conclusion, that the best forecasting results are reached using direct spread multilayer neural network with one hidden layer, consisting of fifteen neurons in the hidden layer (transfer function – hyperbolic tangent) and one output (linear neuron), chosen for ATM cash prediction. Neural network has 6 inputs: average cash demand of the last 7 days, day of the week, month of the year, day of the month, days before holidays and time series record number. The output is ATM cash demand forecast for the following day or week if week discretion data is transferred.

Flexibility of neural network is controlled by limiting the weight of neural networks. For this reason, additional member D is introduced into the neural network prediction error expression, which punishes the network for high weight values (i.e. too high flexibility).

4.2 ATM Network Optimization of Resource Delivery

ATM network optimization topics include three areas: selection of optimal ATM network size [29], cash demand specifics (size of cash on the market) [30-33], and forecast of cash flow demand in ATM networks [27,28]. Analysis of applied methods showed that most frequently analyzed economic models (dependencies) influence cash market structure by factors. Real decisions and tools, which could help to optimize ATM cash management, are not provided.

For profitability modeling we are using ATM optimization function to model such amounts of cash load, which minimize ATM operation expenses. Optimization is performed in consideration of interest rate, upload costs, forecast recommendations and cash management limitations: cash balance, cash insurance expenses, maximum amount of cash, minimal amount of cash, possible ATM unavailability period. Output of optimization function is the date of cash upload into ATM and optimal cash

amount, which is necessary to upload in an ATM in order to minimize ATM operation expenses.

$$\text{ATM cash management costs} = \text{Cash} * \text{Interest} + \text{Cash} * \text{Insurance} + (\text{RUC} \quad (1) \\ \text{or EUC}) + \text{Penalty} \rightarrow \text{minimize, where}$$

Cash - ATM cash amount (limitations: possible minimum and maximum load);
Interest - interest rate, %; *Insurance* - insurance rate, %; *RUC* - Regular upload costs;
EUC - Extra upload costs; *Penalty* – penalty if ATM is not accessible more than 2%
of all working time.

4.3 ATM Networks Profitability Simulation

Experimental research of 2 types has been carried out in the paper: low load and high load ATM network profitability simulation. High load ATM networks are replenished more than one time per day, via versa low load. For high load ATM network simulation we used India bank data of 5500 ATMs (duration up to 3 months). For low load ATM network simulation we used data of Lithuanian bank of 21 ATM (duration - 6 months). In both cases we evaluated optimal (when ANN method is used) and typical (real bank process) models.

After modeling high load ATM network productivity, we found that average productivity of ANN model for a group of accurate ATMs is 17.73 % (assessing losses 11.16%). Optimal model, compared to a typical one is 18% more productive. This criterion characterizes capacity productivity component and shows how productively the existing resources may be used. It is attributable to financial productivity criteria, and only partially evaluates productivity. The amounts of cash-back are decreased by 90%. This criterion shows the productivity of resource distribution.

ATM model average productivity for a group of average ATMs is 26.27% (assessing losses 12.18%), amounts of cash-back are decreased by 32.2% (assessing loss 11.16%), and the amounts of cash-back are reduced by 653%. Benefit without loss is the highest in the group of inaccurate ATMs, its increase is determined by obvious facts, i.e., bigger amounts of cash are uploaded in hardly forecasted ATMs, because standard deviation is much higher than in the case of accurate and average group models.

In regard to accurate ATM group, a network of 5000 ATMs can save 4250 Euros per day, and if the free cash is lent, 2660 Euros may be earned. Total saving and profit benefit would reach 6900 Euros per day, what would allow making 2.52 million Euro profit per year. Average profit of all model groups is 2.35 million Euros per year. Cash management costs are approximately reduced by 25%.

After modeling low load ATM network productivity (detailed evaluation results are presented in Tables 2 and 3), we found that in optimal case average cash-back amounted 13.15%; in typical case – 37.23%.

Table 2. ATM network management efficiency modeling results of the Lithuania Bank (Optimal Model)

<i>Optimal model (using ANN forecasting and optimization procedures)</i>					
ATM number	ATM5011	ATM1004	ATM1045	ATM2001	ATM7012
From	2009-5	2009-2	2009-3	2009-5	2009-5
Till	2010-2	2009-11	2010-2	2010-2	2010-2
Average load	73928	58752	35732	36574	39695
Average Cash back	4225	5462	8277	3687	6938
Cash Back %	5.71%	9.30%	23.17%	10.08%	17.48%
Cash Load Quantity	50	46	36	35	31
Cash Price (interest from cash back)	244	400	723	281	460
Cash Load Price	1225	1125	875	850	750
Total Cash Price (CB)	1469	1525	1598	1131	1210
Frozen Cash (interest)	1469	2188	1709	1457	1264
Total Cash Price (UZ)	3409	3313	2584	2307	2014
Efficiency (CB)	47.11%	59.77%	-2.51%	68.88%	28.80%
Efficiency (UZ)	44.75%	28.20%	28.36%	45.90%	15.18%

Table 3. ATM network management efficiency modeling results of the Lithuania Bank (Typical Model)

<i>Typical model (typical bank scenario)</i>					
ATM number	ATM5011	ATM1004	ATM1045	ATM2001	ATM7012
From	2009-5	2009-2	2009-3	2009-5	2009-5
Till	2010-2	2009-11	2010-3	2010-2	2010-2
Average load	147616	88533	58685	46321	41401
Average Cash back	27505	49540	14313	26190	12686
Cash Back %	18.63%	55.96%	24.39%	56.54%	30.64%
Cash Load Quantity	38	49	23	59	34
Cash Price (interest from cash back)	1827	2566	984	2158	850
Cash Load Price	950	1225	575	1475	850
Total Cash Price (CB)	2777	3791	1559	3633	1700
Frozen Cash (interest)	5220	3390	3031	2789	1525
Total Cash Price (UZ)	6170	4615	3606	4264	2375

Using the created ATM network cash management model, the amounts of cash-back were decreased by 24.08%, compared to a real scenario. Model efficiency shows that using the created ANN method and optimization procedure, the cash supply productivity of certain ATMs may be increased by 44.75% (ATM5011), 45.90% (ATM2001).

Figure 3 presents graphic generalization of modeling results of ATM No 5011; we notice that in case of optimal scenario, cash collecting is balanced in respect of cash demand. Using the created ANN method and optimization procedure, cash supply productivity of ATM5011 is increased by 44.75% (ATM5011), compared to the model, applied in a bank.

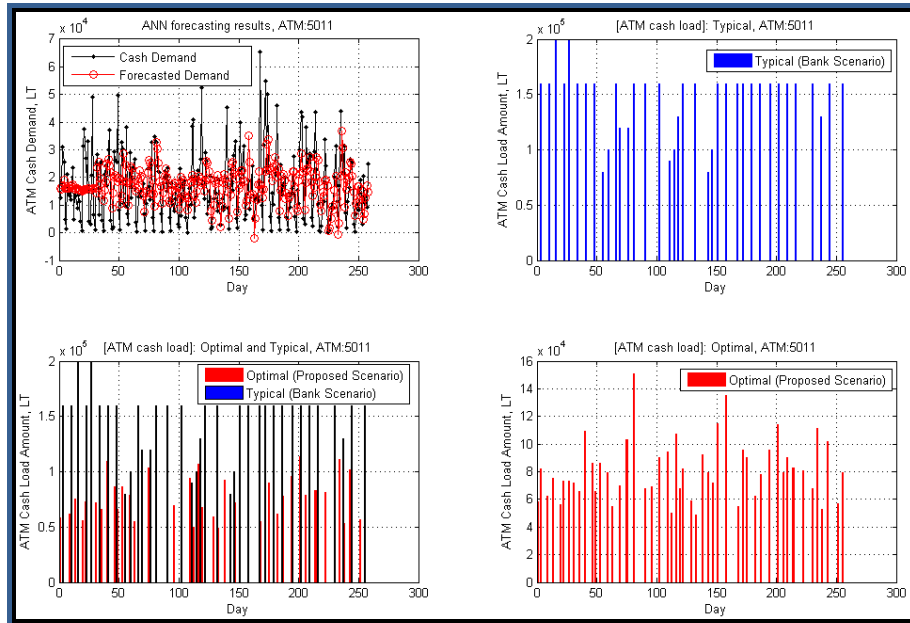


Fig. 3. Cash load model of ATM5011

Using the created ATM network cash management model for low load ATM network management, the cash-back amounts are reduced by approximately 24%, compared to a real scenario. Using the created ANN method and optimization procedure, ATM cash management performance may be approximately increased by 33 %.

5 Conclusions

The productivity of electronic services may be ensured by implementing advanced real-time decision management systems, i.e., changing the realization of service system quality from traditional to predictive. Application of information technologies in service quality management is becoming highly important.

The work of service system must be managed in real time, applying intelligent systems of resource planning and optimization. Certainly, without service quality, productivity management models and systems, the advance software is only a tool; therefore performance management models should be applied as well.

It was found that internal productivity of self-service terminals may be increased by using cheaper maintenance resources, by implementing more advanced technological decisions, and, by optimal distribution of resources. More productive distribution of resources may be performed using accurate service demand forecast measures.

Analysis of high and low load ATM network profitability showed that proposed self-service systems performance evaluation and improvement methods allow

decreasing the amounts of cash-back by 24% and increasing cash management productivity up to 33%.

References

1. Seth, N., Deshmukh, S.G., Vrat, P.: Service quality models: a review, *International Journal of Quality & Reliability Management*, Vol. 22 No.9, pp.913-949, (2005)
2. Gartner: Emerging Technologies Will Help Drive Mainstream BI Adoption, <http://www.gartner.com/>, (2008)
3. Dilijonas, D., Bastina, L.: Retail banking optimization system based on multi-agents technology//16th WSEAS International Conference on computational intelligence, man-machine systems and cybernetics, December 14-16, p. 204-209, (2007)
4. Sahay, B.S.: Multi-factor productivity measurement model for service organization // *International Journal of Productivity and Performance Management*, Vol.2, No 1, p.7-22, (2005)
5. Gronroos, C., Ojasalob, K.: Service productivity Towards a conceptualization of the transformation of inputs into economic results in services, *Journal of Business Research* 57, Elsevier Inc., p 414– 423, (2004)
6. Chase, R.B, Haynes, R.M.: Service operations management. A field guide. In: Swartz TA, Iacobucci D, editors. *Handbook of services marketing and management*. Thousand Oaks, CA: Sage Publications, p. 455– 72, (2000)
7. Ojasalo, K.: Conceptualizing productivity in services. Hanken Swedish School of Economics Finland/CERS Center for Relationship Marketing and Service Management. Helsinki/Helsingfors, (1999)
8. Sherman, H.D., Zhu, J.: Service Productivity Management, Improving Service Performance using Data Envelopment Analysis (DEA), Springer, p. 2-5, (2006)
9. Gummesson, E.: Productivity, quality and relationship marketing in service operations // *International Journal of Contemporary Hospitality Management*, 10/1, p.4-15, (1998)
10. Semeijn, J., Van Riel, A.C.R., Birgelen, M.J.H., Streukens, S.: E-services and offline fulfillment: how e-loyalty is created, *Managing Service Quality*, Vol.15, No.2, p.182-94, (2005)
11. Voss, C.A.: Rethinking paradigms of service – service in a virtual environment, *International Journal of Operations & Production Management*, Vol.23, No.1, p.88-105, (2003)
12. Zhang, X., Prybutok, V.R.: A consumer perspective of e-service quality, *IEEE Transactions on Engineering Management*, Vol. 52, No. 4, p. 461-77, (2005)
13. Watcher, K.: Longitudinal assessment of web retailers: issues from a consumer point of view, *Journal of Fashion Marketing and Management*, Vol. 18, No. 1, p. 53-69, (2002)
14. Rutkauskas, J., Paulaviciene, E.: Concept of Productivity in Service Sector, ISSN 1392-2785 *Engineering Economics*. No 3 (43), Influence of quality management of the country's economy, p. 29-34, (2005)
15. Johnston, R.: Service productivity: Towards understanding the relationship between operational and customer productivity / R. Johnston, P. Jones // *International Journal of Productivity and Performance Management*, Vol.53, No 3, p.201-213, (2004)
16. Gronroos: Service management and marketing. A customer relationship management approach. Chichester: Wiley, (2000)
17. Aldlaigan, A., Buttle, A.: SYSTRA-SQ: a new measure of banks service quality, *International Journal of Service Industry Management*, Vol. 13 No. 4, pp. 362-81, (2002)

18. Bahia, K., Nantel, J.: A reliable and valid measurement scale for the perceived service quality of banks, *The International Journal of Bank Marketing*, Vol. 18, No.2, p. 84-91, (2000)
19. Jabnoun, N., Al-Tamimi, H.A.: Measuring perceived service quality at UAE commercial banks, *International Journal of Quality & Reliability Management*, Vol. 20, No. 4, p. 458-72, (2003)
20. Joseph, M., Stone, G.: An empirical evaluation of US bank customer perceptions of the impact of technology in service delivery in the banking sector, *International Journal of Retail & Distribution Management*, Vol. 31, No. 4, p. 190-202, (2003)
21. Lovelock, C.H.: Functional integration in service: understanding the links between marketing, operations, and human resources, in Swartz, T.A. and Iacobucci, D. (Eds), *Handbook of Marketing and Management*, Sage, Thousand Oaks, CA, (2000)
22. Johnston, R., Clark, G.: *Service Operations Management*, Prentice Hall, London, (2001)
23. Edvardsson, B., Enquist, B., Hay, M.: Values based service brands: narratives from IKEA, *Managing Service Quality*, Vol. 16, No. 3, p. 230-46, (2006)
24. Rowley, J.: An analysis of the e-service literature: towards a research agenda, *Internet Research*, Vol. 16, No. 3, p. 339-359, Emerald Group Publishing Limited, (2006)
25. Santos, J.: E-service quality: a model of virtual service quality dimensions, *Managing Service Quality*, Vol. 13, No.3, pp.233-46, (2003)
26. Zhu, F.X., Wymer, W.J., Chen, I.: IT-based services and service quality in consumer banking, *International Journal of Service Industry Management*, Vol. 13, No.1, p.69-90, (2002)
27. Simutis R., Dilijonas D., Bastina L., Cash demand forecasting for ATM using neural networks and support vector regression algorithms // *Continuous optimization and knowledge-based technologies : 20th EURO Mini conference*, May 20-23, 2008, p. 416-421.
28. Sakalauskas, V., Dilijonas, D., Kriksciuniene, D., Simutis, R.: Intelligent systems for retail banking optimization-Optimization and Management of ATM Network System. ICEIS 2009 - 11th International Conference on Enterprise Information Systems, Milan, Volume AIDSS, p.321-325, (2009)
29. McAndrews, J., Rob, R.: Shared ownership and pricing in a network switch. *International Journal of Industrial Organization*, 14, p. 727-745, (1996)
30. Boeschoten, W.: Cash management, payment patterns and the demand for money. *De Economist* 146, No. 1, p. 117-142, (1998)
31. Viren, M.: Financial innovations and currency demand, some new evidence, *Empirical Economics*, 1992, p. 451-461, (1992)
32. Snellman, H., Viren, M.: ATM Networks and Cash Usage, Fore presentation at the FMG/Cass Business School Workshop on "Financial Regulation and Payment Systems" at the Cass Business School on September 28, (2006)
33. Stix, H." How do debit cards affect cash demand? Working Paper 82, Oesterreichische National bank, (2003)