



HAL
open science

Sparse Geometric Representation Through Local Shape Probing

Julie Digne, Sébastien Valette, Raphaëlle Chaine

► **To cite this version:**

Julie Digne, Sébastien Valette, Raphaëlle Chaine. Sparse Geometric Representation Through Local Shape Probing. IEEE Transactions on Visualization and Computer Graphics, 2018, 24 (7), pp.2238-2250. 10.1109/TVCG.2017.2719024 . hal-01547820

HAL Id: hal-01547820

<https://hal.science/hal-01547820>

Submitted on 27 Jun 2017

HAL is a multi-disciplinary open access archive for the deposit and dissemination of scientific research documents, whether they are published or not. The documents may come from teaching and research institutions in France or abroad, or from public or private research centers.

L'archive ouverte pluridisciplinaire **HAL**, est destinée au dépôt et à la diffusion de documents scientifiques de niveau recherche, publiés ou non, émanant des établissements d'enseignement et de recherche français ou étrangers, des laboratoires publics ou privés.



Distributed under a Creative Commons Attribution 4.0 International License

Sparse Geometric Representation Through Local Shape Probing

Julie Digne, Sébastien Valette, and Raphaëlle Chaine

Abstract—We propose a new shape analysis approach based on the non-local analysis of local shape variations. Our method relies on a novel description of shape variations, called Local Probing Field (LPF), which describes how a local probing operator transforms a pattern onto the shape. By carefully optimizing the position and orientation of each descriptor, we are able to capture shape similarities and gather them into a geometrically relevant dictionary over which the shape decomposes sparsely. This new representation permits to handle shapes with mixed intrinsic dimensionality (e.g. shapes containing both surfaces and curves) and to encode various shape features such as boundaries. Our shape representation has several potential applications; here we demonstrate its efficiency for shape resampling and point set denoising for both synthetic and real data.

Index Terms—Shape similarity - Local shape descriptor - Point set denoising and resampling.

1 INTRODUCTION

Shape analysis is a widely studied topic in Computer Graphics. It is necessary for many different applications such as resampling, denoising, matching, registration. Furthermore, shapes can be represented in various ways (e.g. point sets provided by 3D scanners or meshes provided by artists) and few methods can address this wide variety of representations. We introduce a statistical method to discover the structures of a given shape by building a dictionary of its local variations yielding a sparse description of the surface. Our method frees itself from the input shape representation format (e.g. mesh or point set) and only needs a probing operator, a tool that associates a point in the ambient space to a point on the local shape. This assumption is very versatile with respect to the shape representation, and can encode manifold surface parts as well as curves. Using the local probing operator, shape variations are represented as Local Probing Fields (LPF) which map instances of a sampling pattern onto the shape. Then, each pattern position and orientation are optimized in order to increase the description efficiency. Finally, by jointly and non-locally analyzing these deformation fields, the shape itself learns its own analysis space, *i.e.* a subspace spanned by a dictionary that best describes it.

1.1 Related Work

Exploring images and shapes by looking for structures and repetitions is a fast-developing trend in Computer Graphics. It can be performed at a larger scale, for discovering shape global properties through explicit symmetry and structure

detection [1] [2]. It can also be done at a finer scale to discover and exploit small-scale shape similarities. This idea, which lies at the heart of our method, is known as non-local analysis and has been extensively studied in the image processing community.

Non-local analysis. This principle has been introduced for denoising 2D images [3]. It processes a pixel using not only its own neighborhood but also *all* pixels with a *similar* neighborhood, even if they are distant. Non-local analysis has also been used to analyze images and videos together in [4]; it has been extended to 3D surfaces for denoising [5] [6], super-resolution [7], for surface reconstruction using the famous Point Set Surface framework [8], and surface inpainting [9] by copying similar patches to missing regions. It has also been exploited in the context of shape resampling and consolidation. For example, Zheng et al. developed an algorithm for urban scan consolidation using the repeatability and similarity of urban features [10], by means of explicit plane fitting and model matching.

Dictionary learning. The non-local principle is strongly related to the dictionary learning research field: given a set of signals, these methods aim at finding a dictionary as well as a set of coefficients that best describe the signals. If those signals really represent similar phenomena, then few non-zero coefficients will be enough to describe each signal with an optimized dictionary [11] [12]. Dictionary learning can be seen as a way for the shapes, images or signals to design their own analysis space. In Computer Graphics, dictionary learning was used for mesh reconstruction [13] by considering vertices positions as dictionary atoms over which the initial point set is decomposed. Unfortunately, the watertight manifold surface constraint cannot be expressed as an algebraic problem and needs an ad-hoc construction method. In this approach, dictionary learning is not used to emphasize similarity but to extract a subset of input points on which a mesh can be constructed, as a piecewise linear approximation of the shape. Vertices positions are optimized afterwards, but local geometric information is not enhanced

- Julie Digne and Raphaëlle Chaine are with Univ Lyon - LIRIS - CNRS UMR 5205 - Université Lyon 1
- Sébastien Valette is with CREATIS - CNRS UMR 5220 - INSA de Lyon
- Corresponding author: Julie Digne (julie.digne@liris.cnrs.fr)

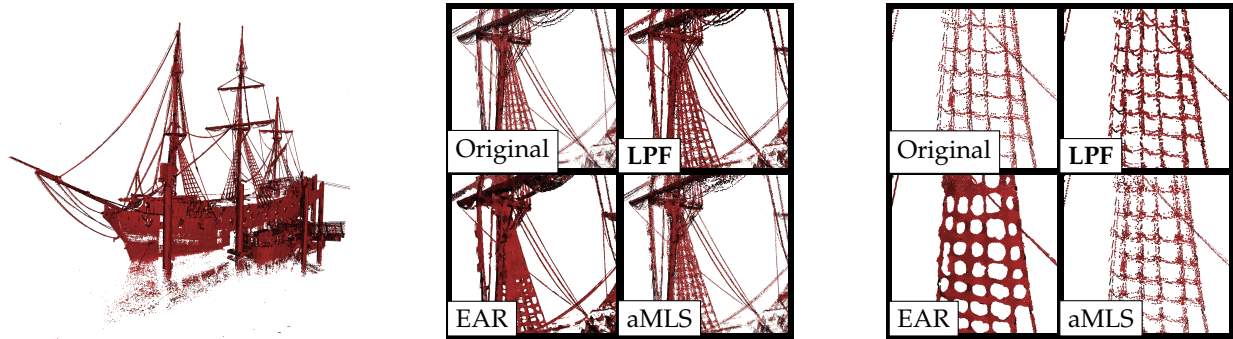


Fig. 1: Upsampling an ancient ship scanned using LiDaR technology. Left: original boat scan (1.1 Million points). Middle and right: comparisons with other point set upsampling methods (2.2 Million points): anisotropic MLS and EAR. Our Local Shape Probing analysis scheme was able to recover and highlight both curve and surface structures, whereas EAR enlarges curves, and aMLS adds blur. Dataset courtesy of Dorit Borrmann, Jan Elseberg, and Andreas Nüchter (Jacobs University Bremen).

as in our case. Moreover, there is no known efficient way to extend this approach for resampling or denoising, the two applications presented in this paper. Dictionary learning has also been used for designing shape descriptors in a supervised way [14]. Another dictionary learning application is compression [15] by representing point sets as local height maps around selected anchors and decomposing them on a dictionary. But once again the local model is suited for manifold surfaces without boundaries: curves and boundaries will be dilated during decompression. A complete survey for sparse representations in geometry processing can be found in [16]. Representing a point using sparse coefficients on a basis can also be performed by considering only the coordinates (e.g. differential coordinates [17] or Laplacian coordinates [18]) which are efficient for surface editing, but are not sampling invariant.

Our work shares some similarity with the manifold reconstruction thread of work [19], where local charts are explicitly reconstructed from input meshes to model the manifold surface by optimizing for the compatibility of the representations. Yet our goals and requirements are quite different: we do not require the manifold assumption and will optimize for local representations to better enhance the similarity.

Shape matching and retrieval. Surface local representations by descriptors are widely used for registration and matching, such as the Scale-Invariant Feature Transform (SIFT) [20] in the image processing field. Subsequently, many 3D local descriptors have been proposed such as spin images [21], SHOT [22], shape contexts [23] adapted to 3D [24], Mesh-HoG [25], Heat-Kernel Signatures [26] or descriptors based on Graph Wavelets [27]. These descriptors have been successfully used for 3D scan registration and shape retrieval [28] [29]. The shape correspondence problem has also been addressed by Deep Learning approaches [30] [31] [32] when the shapes are represented as meshes. However those approaches require large datasets to train the network to be later used on the test data.

Shape resampling and denoising. Many other feature preserving resampling methods have been investigated, even if they do not explicitly take similarity into account. For example Huang et al. [33] [34] proposed an algorithm to

detect sharp features, and resample shapes starting from surface parts that are distant from the edges and resample gradually toward the edges in order to better recover them. This method, called Edge-Aware Resampling (EAR), is built upon the *Locally Optimal Projection* [35] and its weighted variant the *Weighted Locally Optimal Projection* [36], a relaxation method to resample shapes. Other successful shape resampling techniques build on the Moving Least Squares approach [37] [38], to resample a shape using local fitted models. Several improvements to better preserve sharp features have been proposed either relying e.g. on outlier-robust statistics [39], local fitting of algebraic spheres [40] or outlier-robust kernel regression [41]. Consolidation can also be tackled from a more global perspective, for example using a shape skeleton to complete a shape [42]. Our method will on the contrary focus on the statistical analysis of local properties. Denoising methods have also been introduced for meshes and point sets. [43] proposed to decouple noise from surface by extracting a smooth surface and denoising the residual (as in [6]) using ℓ^1 decomposition. This efficient denoising technique however relies on Laplacian decomposition, which is computationally intractable for large point sets. Similarly [44] proposes to denoise a point set by first denoising the normals based on the ℓ^0 norm and then denoising the points positions using the estimated normals. This type of denoising is particularly well suited for piecewise planar surfaces. Such a two-step strategy was also adapted in a Total Variation framework [45]. Other approaches include explicit feature detection before denoising [46], or taking advantage of both facet and vertex normals in the mesh case [47].

1.2 Contributions

We propose a shape analysis framework that reveals the shape similarities but also its local dimensions. To do so we introduce a way to represent the shape by a set of deformation fields that represent the deformation of a pattern onto the local shape regardless of its local dimensionality (e.g. 2-manifolds, curves, boundaries). We call these representations Local Probing Fields (LPF). We exploit the idea that if the patterns are positioned optimally all over

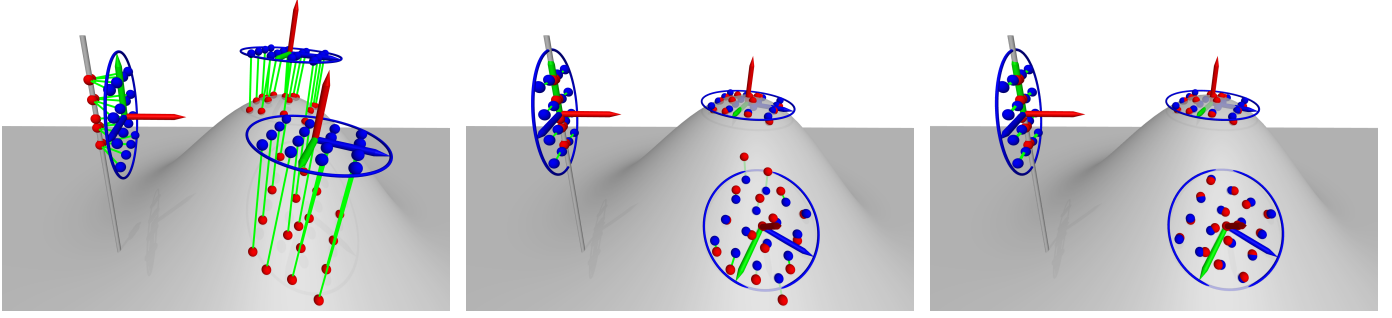


Fig. 2: Three LPFs in the vicinity of a shape. LPFs can be initialized from any position and orientation of the pattern. Left: initial position. Middle: after position and rotation optimization. Right : after projection on the shape.

the shape, the deformations fields can be compared with each other in a joint statistical learning process. The analysis space is changed: instead of studying shape variations in the traditional \mathbb{R}^3 space, we study them in the space of deformation fields. A joint analysis of these deformation fields allows to extract a dictionary over which the shape can be decomposed sparsely, thereby enhancing the structures and similarities of the shape.

The main contributions of this paper are the following:

- A local descriptor based on a probing operator that can handle shapes with heterogeneous intrinsic dimensionality.
- A novel algorithm to discover local similarities in a shape.
- The construction of a geometrically relevant shape dictionary.

2 LOCAL PROBING FIELDS

Our framework consists in the construction, analysis and exploitation of deformation fields that are defined locally in the ambient space.

2.1 Definitions

The principal ingredient for building a LPF is a *Probing Operator* \mathcal{P} . In its most general form, it is defined as an operator that, to each point x in the ambient space assigns a point of the shape near x . We will see in next section how a specific probing operator can be designed. A LPF also requires a sampling pattern, a set of points, centered around a seed point s and oriented according to an orthogonal frame $(\mathbf{t}_1, \mathbf{t}_2, \mathbf{n})$. It can be made of points sampled on a surface, as shown on figure 3. These points are expressed as offset vectors $(\mathbf{u}_i)_{i=0 \dots M-1}$ from the seed to the points. There is no strong constraint on the dimensionality of the pattern, even if it seems reasonable to choose a dimension at least equal to the largest dimension of the input structures. Moreover, the pattern is also free from any regularity constraint. Finally, each LPF accounts for only a part of the shape depending on its initial location. This shape area will be referred to as *target area*.

Let us now consider a pattern centered at a point s on the shape \mathcal{S} , and aligned with the local orthogonal frame $(\mathbf{t}_1, \mathbf{t}_2, \mathbf{n})$. Using the probing operator \mathcal{P} , each point of the pattern is assigned to a point of the target area. Then, the

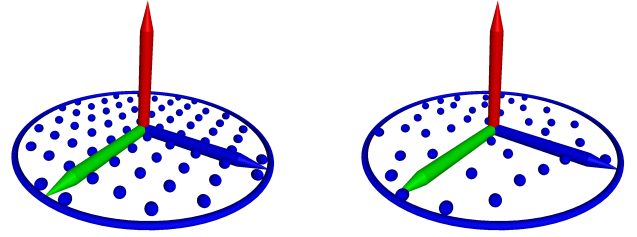


Fig. 3: Pattern examples: points regularly or randomly sampled on a planar disk.

Local Probing Field centered at s is the displacement of each point of the pattern to its image under \mathcal{P} . Let us define:

$$\text{LPF}(s) = \{\mathbf{v}_i\}_{i \in 0 \dots M-1} \tag{1}$$

where \mathbf{v}_i is a \mathbb{R}^3 vector such that $\mathbf{v}_i = \mathcal{P}(s + \mathbf{u}_i) - (s + \mathbf{u}_i)$. Hence, a LPF is a vector field encoding the deformation of the pattern points onto the shape, without any smoothness requirement or model for the deformation field. Thus, instead of having a prior model, we will encode the shape as a set of local transformations and solely work on these.

2.2 As-Orthogonal-As-Possible LPFs

Given a pattern and a local probing operator, a LPF is entirely determined by its orientation and position. The challenge is to ensure that the resulting representation is efficient enough for the further joint analysis to reveal the shape similarities.

In the case of manifold surfaces, height maps come to mind as a natural and efficient way to represent local surface variations, as height maps contain only geometric information. In our far more general case, we cannot assume that the shape is a manifold, since we want to infer its dimensionality by the learning process. Ideally the LPF should be similar to a height map near a locally manifold surface, but should also handle other cases such as boundaries and curves. Therefore we propose to render the LPF as-close-as-possible to a height map, by maximizing the orthogonality of the \mathbf{v}_i vectors with respect to the pattern support plane $(\mathbf{t}_1, \mathbf{t}_2)$. Intuitively, when the surface is manifold, the plane parameterized by $(\mathbf{t}_1, \mathbf{t}_2)$ should be close to the regression plane. With this goal in mind, several probing operators can be devised, depending on the input description of the shape.

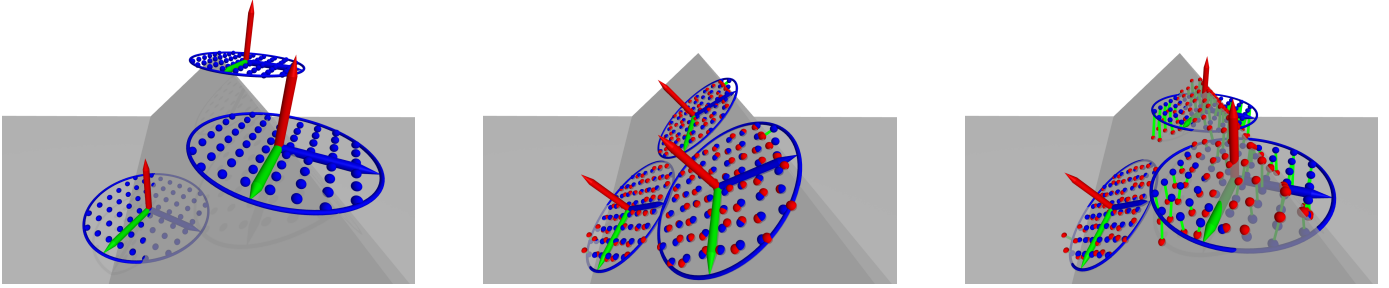


Fig. 4: Capturing sharp features. Left: initial LPFs positions. Middle: optimization with the nearest neighbor projection causing LPFs to move away from sharp features. Right: optimization using our probing operator, LPFs remain close to their initial target area

One can use a simple orthogonal projection on the nearest triangle if the shape is represented by a triangular mesh or a Newton-Raphson projection operator if the shape is represented by an implicit function. In case of point sets, the possible projections range from nearest point projection to variants of the Moving Least Squares (e.g. [37] [40]).

We use a different probing operator aiming at creating as-orthogonal-as-possible \mathbf{v}_i s: each point p of the pattern is assigned to the point q of the target area whose projection q' on the pattern plane is the closest to p . As shown on figure 2, this probing operator captures well both curves (as would a nearest point projector) and manifold surface parts (as would a height map computation).

Moreover, LPFs are generically defined with an arbitrary orientation. We can then optimize each LPF position and orientation to better fit its target area. Unfortunately, using LPFs orthogonality as the sole criterion during this optimization would result in an ill-defined problem. Therefore we propose to minimize instead the norms of the \mathbf{v}_i s and alternate the two following steps for each LPF independently:

- Compute $\mathbf{v}_i = \mathcal{P}(s + \mathbf{u}_i) - (s + \mathbf{u}_i), \forall i \in 1 \dots M$. Due to our choice of \mathcal{P} , \mathbf{v}_i s are close to orthogonal to the pattern.
- Find the rotation and translation of the local frame and pattern minimizing the squared norms of the \mathbf{v}_i s: $\min \sum_i \|\mathbf{v}_i\|^2$.

If the chosen probing operator is the nearest point projector, then the method described above is the well known Iterative Closest Point (ICP) registration [48] between the pattern and the shape. Using the as-orthogonal-as-possible probing operator yields a variant of ICP. An interesting side effect of this approach is that, after optimization, LPFs remain close to their initial target area, whether they are located on geometric features or not. On the other hand, nearest-neighbor-based optimization tends to move LPFs away from sharp features, as shown in figure 4.

3 LPF-BASED SHAPE ANALYSIS

Local Probing Fields capture local variations of the shape. These variations can be geometrical and topological. If the set of LPFs covers the whole shape, it is possible to analyze them jointly and thus learn the shape similarities. This joint

learning process is partially based on dictionary learning. Describing the shape in the space of deformation fields, changes *de facto* the space where the shape analysis is performed.

3.1 Initial LPF positions

A set of LPFs is built at arbitrary locations around the shape, with arbitrary frame orientation. The only constraint on this initial LPF set is that the set of target areas should provide a possibly overlapping covering of the shape. For example, a pattern can be initially positioned on a sampling of the shape (e.g. each vertex in the case of a mesh or a point set) with a random orientation. They can also be aligned with principal directions if they are defined, which is not the case for curves. To illustrate the efficiency of our framework, we distribute LPFs on the shape using a Poisson sampling process and use random initial orientation. These positions and orientations are further improved using the minimization defined in section 2.2.

In practice, the target area of a given LPF is set as the intersection of a sphere centered at s with the shape. The radius of this sphere is set to be slightly larger than the pattern radius in order to relax the position of the LPF with respect to the target area while still ensuring that the information is well represented. In our experiments, we chose $s = 1.1r$. With this definition, LPFs should be located near the shape to have non-empty target areas. As a consequence, although positions and orientations of the LPFs evolve during the analysis, the target area of each LPF remains unchanged.

Let us notice that if the sampling density of the pattern is below the sampling density of the shape, the LPF representation is conservative. In that case, the shape can be exactly reconstructed from its set of LPFs.

3.2 Joint Analysis Overview

Our shape analysis process computes:

- A dictionary of d atoms that best describes the LPFs, and therefore the shape.
- A sparse set of coefficients to decompose each LPF on the dictionary. The sparsity constraint enforces a consolidation of the information.

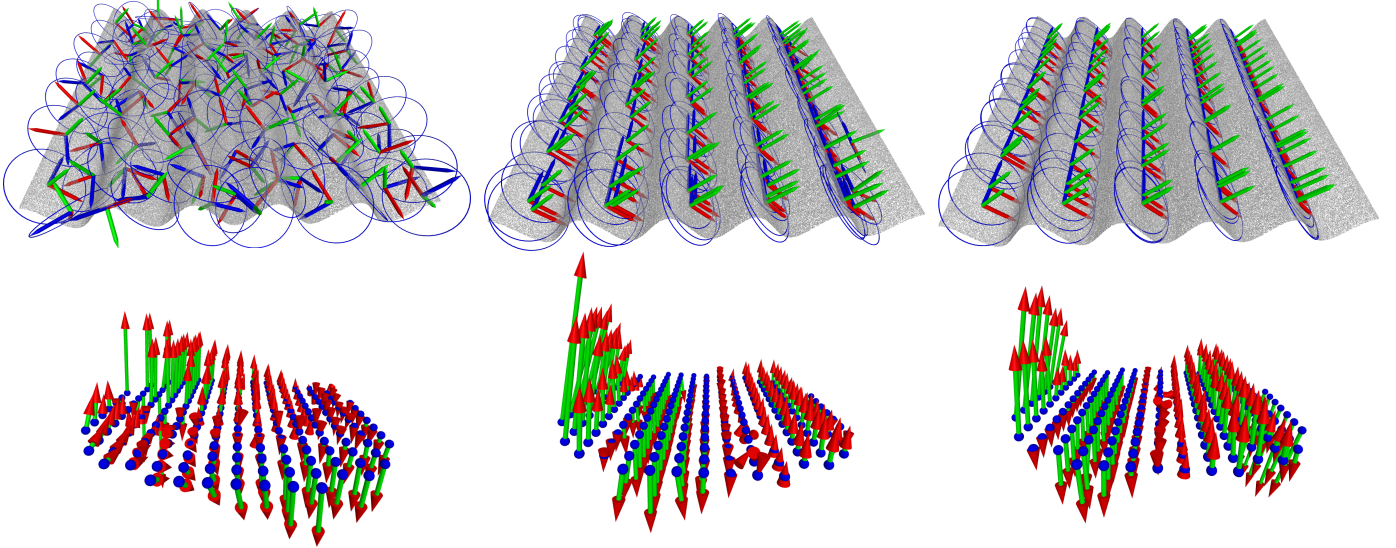


Fig. 5: Optimization of the LPFs on a toy example. From left to right : iteration 1, 10, 99. Top : LPFs tend to align in order to represent similar areas. Bottom : single-atom dictionary, which converges to a smooth sinusoidal deformation. The shape covering constraint has been relaxed for that experiment.

- LPF positions and orientations that best enforce a consistent representation, their target areas being fixed.

Let N be the total number of LPFs. Writing the LPFs as vectors $V_j \in \mathbb{R}^{3M}, j \in 0 \dots N - 1$, the problem can be stated as follows:

$$\begin{aligned} \min_{V, D, \alpha} \sum_{j=0}^{N-1} \|V_j - D\alpha_j\|_2^2 + \lambda \|\alpha\|_1 \\ \text{s.t. } V_j \text{ represents a LPF with fixed target area} \quad (2) \\ \{V_j\}_{j \in 0 \dots N-1} \text{ cover the whole shape} \\ D \in \mathbb{R}^{3M \times d}, V_j \in \mathbb{R}^{3M} \end{aligned}$$

Previous works on sparsity have mostly focused on minimizing the representation error: given a set of N signals V_j , the aim is to find the best dictionary to represent the set of signals in a sparse manner (few non-zero coefficients). In our approach, we tackle a more complex problem since both the signals and their representations are optimized while subject to very strict constraints. The dictionary learned on the initial set of LPFs is strongly dependent on initial positions and orientations of the patterns. As a consequence, two similar parts of the shape might be described by non-similar LPFs because of different initial poses, whereas their difference could be reduced after a change in position and orientation. The goal of the energy minimization is thus to improve dictionary learning via enhancement of the LPFs similarity.

Our algorithm iterates the following steps:

- 1) **Dictionary learning:** Solve for D, α minimizing $\sum_{j=0}^{N-1} \|V_j - D\alpha_j\|_2^2 + \lambda \|\alpha_j\|_1$.
- 2) **LPF Pose optimization:** For each LPF V_j , solve for the translation t and rotation R minimizing the representation error and update the V_j , seed and frames accordingly.

- 3) **LPF Update:** Update each LPF V_j using the probing operator.

Figure 5 shows how our algorithm captures the self-similarities of a synthetic shape. Starting with points sampled randomly on a sinusoidal surface, we set 100 initial LPFs with random position and orientation on the shape. We then iterate our LPF joint analysis method. The result shows that the LPFs align at positions that represent similar parts of the shape, and their optimized orientations are consistent.

3.3 Sparse Coding For Dictionary learning

The first optimization aims at learning a good dictionary over which the signals will be *sparsely* decomposed. Let us write the LPFs as vectors $V_j \in \mathbb{R}^{3M}$ for $j \in 0 \dots N - 1$. Then the representation optimization corresponds to the Least Absolute Shrinkage and Selection Operator (LASSO) problem, which is defined as the minimization of:

$$l(\alpha, D) = \sum_{j=0}^{N-1} \|V_j - D\alpha_j\|_2^2 + \lambda \|\alpha_j\|_1 \quad (3)$$

with $D \in \mathbb{R}^{3M \times d}$ and $\alpha_j \in \mathbb{R}^d$. As stated in [12] and [49], the ℓ^1 norm is empirically known to provide sparse solutions while improving the speed of dictionary learning compared to the so-called ℓ^0 norm (number of non-zero elements in a matrix). The dictionary is initialized with d elements drawn randomly from the set $(V_j)_{j \in 0 \dots N-1}$. Afterwards, the algorithm alternates between the two following steps:

- Sparse coding step to compute $\alpha_j, j \in 0 \dots N - 1$, using the Least Angle Regression (LARS) algorithm [50].
- Dictionary update step, performed by using the previous dictionary as a warm restart to minimize the objective function.

The steps are iterated until convergence of the representation error is reached. In our setting, 10 iterations are sufficient for the error to converge. The λ parameter controls the sparsity of the solution: large values will favor very sparse solutions while small values will yield dense solutions. In our tests, we set $\lambda = 0.2$ for dictionaries with a large number of atoms, and $\lambda = 0.05$ for small dictionaries, to allow enough non-zero coefficients for shape representation.

The dictionary is initialized to a random subset of the LPFs. Since our algorithm converges to a local minimum, a different random initialization might lead to different minima. We experimentally observed the stability with respect to the random dictionary initialization, by running the shape analysis algorithm 50 times with the exact same parameters, starting with a different initial random dictionary and measuring the representation error (3) divided by N . This experiment yielded an average error of 3.2 and a standard deviation of 0.007, thus showing that our algorithm is rather stable to the random dictionary initialization. Although the error converges to similar values, LPF Analysis is unfortunately not guaranteed to converge towards the same dictionary given different initializations (similarly to K-Means or K-SVD). A stable dictionary would be of great interest for applications such as shape matching and retrieval. However, for the applications shown in this paper (resampling and denoising), stability of the dictionary is not crucial, since it is an intermediate representation and not the output of the algorithm.

An alternative for the sparse coding step might be to use Deep Learning and especially auto-encoders but the optimization of position and rotation to ensure that LPF representation of similar regions are indeed similar does not write in a simple way.

3.4 Pattern pose optimization

The previous sparse decomposition steps introduce a representation error. But reducing this error is still possible by improving each LPF pose individually, to find the optimal fit between the shape and each newly modified LPF. This can easily be done using a least squares minimization step, similar to what is done during one ICP iteration. More precisely, one looks for a translation of the LPF and a rotation of its frame such that the newly defined vectors \mathbf{v}_i fit better the ones obtained by dictionary decomposition $\tilde{\mathbf{v}}_i$. After a rotation R of the LPF frame and translation \mathbf{t} of its position, the modified \mathbf{v}_i can be expressed as:

$$\mathbf{v}'_i = R^{-1} \cdot (\mathbf{u}_i + \mathbf{v}_i) - \mathbf{u}_i - \mathbf{t}. \quad (4)$$

The best rotation and translation thus minimize:

$$\sum_{i=0}^{M-1} \|\mathbf{v}'_i - \tilde{\mathbf{v}}_i\|^2 = \sum_{i=0}^{M-1} \|R^{-1} \cdot (\mathbf{u}_i + \mathbf{v}_i) - \mathbf{t} - (\mathbf{u}_i + \tilde{\mathbf{v}}_i)\|^2 \quad (5)$$

which is exactly a least squares minimization for estimating a rigid transform between two sets of points: $\mathbf{u}_i + \mathbf{v}_i$ and $\mathbf{u}_i + \tilde{\mathbf{v}}_i$.

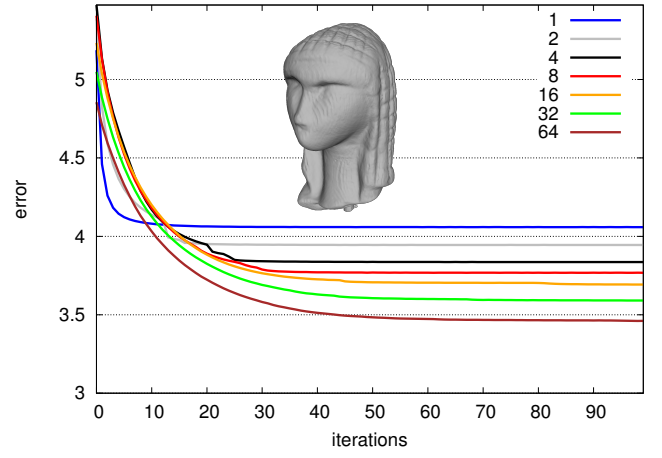


Fig. 6: Error convergence for the “Brassempouy” model, for different dictionary sizes. For visualization purposes, the error is divided by the dictionary size.

Using these optimal rotation and translation for each LPF, the seed position s , frame orientation $\mathbf{t}_1, \mathbf{t}_2, \mathbf{n}$ and vectors \mathbf{v}_i should be updated accordingly:

$$\begin{aligned} s^{\text{updated}} &= s - \mathbf{t}; \\ \mathbf{t}_1^{\text{updated}} &= R^{-1} \mathbf{t}_1; \\ \mathbf{t}_2^{\text{updated}} &= R^{-1} \mathbf{t}_2; \\ \mathbf{n}^{\text{updated}} &= R^{-1} \mathbf{n}; \\ \forall i \in 0 \dots M-1, \mathbf{v}_i^{\text{updated}} &= R^{-1} \cdot (\mathbf{u}_i + \mathbf{v}_i) - \mathbf{u}_i - \mathbf{t}. \end{aligned} \quad (6)$$

This update maintains the consistency between the shape and the description, position and orientation of the LPFs.

3.5 Closing the loop

After the LPF pose optimization step, the set of optimized LPFs is better suited for the input shape analysis. We use once again the probing operator to probe the shape with respect to the optimized LPF pose. To avoid LPFs gliding on the shape (with the risk of losing the shape covering), we restrict the update to its original target area. Therefore, although each LPF pose and sparse decomposition is optimized, it always accounts for the same shape area. This update can theoretically increase the error but we observed experimentally that the error decreases across the iterations (see Fig. 6). Then, we are able to repeat all the processing steps until convergence is reached. Figure 6 shows the evolution of the error with varying dictionary sizes on the Brassempouy point set.

Figure 7 shows the analysis result for a shape representing a cube with a curve when using a dictionary of size 1 and 3. When using 1 atom, the decomposition (a) mostly encodes the curve, while sharp features are undetected. When using 3 atoms, the decomposition (c) exhibits significant coefficients on sharp edges or on the curve. For both cases, the remaining parts of the shape are represented with small coefficients for all atoms. (b), (d), (e) and (f) show atoms representing sharp features and curves. These experiments show that the final dictionary retrieves important features of the shape.

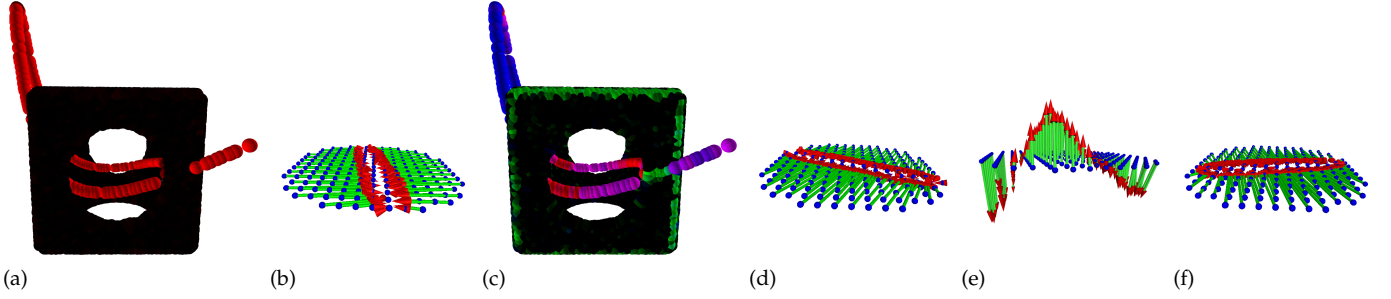


Fig. 7: Analysis of a cube with a curve (also shown on Fig. 8). (a) : Decomposition using 1 atom, where the amplitude of the decomposition is encoded as the red component. (b) the resulting dictionary atom, which exhibits a shape with intrinsic dimension 1. This is consistent with the decomposition coefficient representation (a) where only the curve part contains significant coefficients. (c) Decomposition using 3 atoms, each component being encoded respectively using the red, green and blue component. (d), (e) and (f): the three resulting atoms. One atom represents the sharp feature and 2 atoms represent the curve. Notice that the planar parts are decomposed with all coefficients equal to 0, since our pattern is perfectly planar.

3.6 Controlling the shape analysis

Our shape analysis approach is driven by three parameters: the pattern radius r , the number of points M of the pattern, and the number of dictionary atoms d .

The pattern radius r is linked to the shape geometry: it represents the scale at which the similarities can be exploited to build the dictionary. On Figure 10, we illustrate the importance of the radius: with a large radius, the faceted sphere mesh is interpreted as a sphere, whereas it stays a piecewise linear shape with a small radius.

Once r is fixed, the number of points M in each pattern controls the accuracy of the analysis. This accuracy can be measured by the average distance τ_s between pattern points. Assuming that the points are uniformly sampled on a disk of radius r , each point represents a region of area $\frac{\pi r^2}{M}$. Thus, an estimation of the distance between points is $\tau_s = \frac{r}{\sqrt{M}}$. Hence, once τ_s is fixed, M can be computed as: $M = \frac{r^2}{\tau_s^2}$. M can then be adjusted at will, to perform different sampling scenarios, depending on the input shape: if the probing operator accuracy is τ_p , setting $\tau_s = \tau_p$ will perform a 1 : 1 sampling scheme. Setting $\tau_s = 0.5\tau_p$ will double the number of sampling points, as shown on figure 1. In practice, an efficient way of building a pattern is to generate a regular grid with a step of size τ_s and keep only the points that are included within a radius r .

The number of atoms d controls the amount of consolidation. If the number of LPFs is equal to the number of atoms, then no LPF learning is performed since all LPFs can be represented independently, and there is no consolidation. Conversely, fewer dictionary atoms implies a stronger consolidation. Therefore the number d of atoms in the dictionary controls the degrees of freedom in the representation, i.e. the supposed variability of local parts of the shape. d can be increased until the error falls under a threshold that is consistent with the accuracy τ_p of the probing operator. Interestingly, when the sampling pattern is planar, all dictionaries naturally allow to represent planar regions as any atom multiplied by 0 results in a planar shape.

Finally, let us notice that the analysis framework is entirely driven by the minimization of Equation (2). First,

the dictionary learning minimizes the error with fixed LPFs. Then, the pose estimation step keeps the dictionary and coefficients fixed and minimizes the error by aligning the LPFs to match the dictionary decomposition, therefore, the ℓ^1 component remains unchanged while the ℓ^2 component decreases making the sum of the two components decrease.

The last recomputation step is not guaranteed to reduce the error, since the probing operator is used once again to recompute the LPFs. Without this step, the error defined by Equation (2) would always decrease and convergence would be guaranteed. In our experiments, we observed that in most cases, this recomputation step made the error decrease. However, in a few cases the error increased marginally but that was compensated by the decrease in the two other steps. Moreover, using the recomputation step yields lower errors and better dictionaries.

4 APPLICATIONS

4.1 Shape Resampling

The shape analysis of section 3 provides us with optimized LPF positions \tilde{s} and orientations $\tilde{\mathbf{t}}_1, \tilde{\mathbf{t}}_2, \tilde{\mathbf{n}}$ as well as a shape dictionary D and the associated decomposition coefficients α . We propose to use these optimized LPFs to sample points on the shape.

First, the vector fields are recomputed using their decompositions $\tilde{V}_j = D\alpha_j$. Each LPF yields a set of points p_i such that:

$$p_i = \tilde{s} + (\mathbf{u}_i \cdot x + \tilde{\mathbf{v}}_i \cdot x) \tilde{\mathbf{t}}_1 + (\mathbf{u}_i \cdot y + \tilde{\mathbf{v}}_i \cdot y) \tilde{\mathbf{t}}_2 + (\mathbf{u}_i \cdot z + \tilde{\mathbf{v}}_i \cdot z) \tilde{\mathbf{n}} \quad (7)$$

where $\mathbf{u}.x, \mathbf{u}.y, \mathbf{u}.z$ are the x, y, z coordinates of vector \mathbf{u} (and similarly for \mathbf{v}). Since the LPFs overlap, the reconstructed information in the overlapping areas may not coincide exactly. In these areas, a consensus point distribution, still driven by the error minimization, must be built. Let us call q an hypothetical best consensus position. This point is located inside the target areas of several LPFs. A point $(s^\mathcal{L}, \mathbf{u}_i^\mathcal{L}, \tilde{\mathbf{v}}_i^\mathcal{L})$ of a reconstructed LPF \mathcal{L} is said to conflict with a point q if the target area of \mathcal{L} includes q and $\|s^\mathcal{L} + \mathbf{u}_i^\mathcal{L} + \tilde{\mathbf{v}}_i^\mathcal{L} - q\| \leq \tau_p^2$. In practice this means that the LPF \mathcal{L} yields a point close to q . Let us define $\mathcal{A}(q)$ the influence

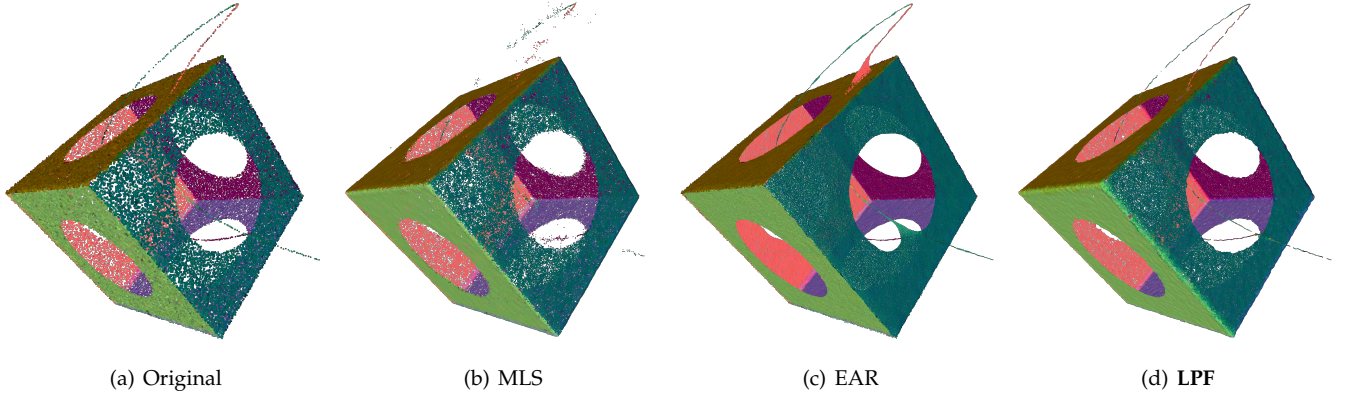


Fig. 8: Upsampling a slightly noisy hollow cube intersected by a curve. Original point set (80K points), MLS, EAR, LPF (360K points). MLS is unstable around thin lines. EAR performs better on the edges but tends to impose a local surface model, as can be seen near the intersection of the line and the cube ($r = 0.25, M = 793, d = 64$, Shape diagonal: 8.8).

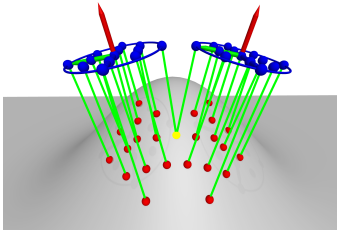


Fig. 9: LPF consolidation: during resampling, a point on the shape (yellow sphere) may be shared by two different LPFs.

zone of q as the set of conflicting LPF points. A consensus point q should minimize:

$$\sum_{(s^{\mathcal{L}}, \mathbf{u}_i^{\mathcal{L}}, \tilde{\mathbf{v}}_i^{\mathcal{L}}) \in \mathcal{A}(q)} \|q - s^{\mathcal{L}} - \mathbf{u}_i^{\mathcal{L}} - \tilde{\mathbf{v}}_i^{\mathcal{L}}\|_2^2. \quad (8)$$

This minimization is non-trivial since $\mathcal{A}(q)$ varies with q . Fortunately, we can simplify it by fixing the set $\mathcal{A}(q)$ which yields a least squares minimization resulting in: $q = \frac{1}{\#\mathcal{A}(q)} \sum_{\mathcal{A}(q)} s^{\mathcal{L}} + \mathbf{u}_i^{\mathcal{L}} + \tilde{\mathbf{v}}_i^{\mathcal{L}}$. In practice this means that when a LPF proposes a position q , the best consensus point is found inside $\mathcal{A}(q)$, and q is moved at this optimal position. Afterwards, no point conflicting with q can be added to the resampled point cloud.

We experimented our framework on shapes represented as surface meshes (Figures 10, 11) and point sets (e.g. Figures 1, 14). On a LiDaR point set (Fig. 12), our LPF framework yields a detail-enhancing resampling which preserves well the point set borders. We first illustrate how the resampling removes the noise in a feature preserving way (Figures 13, 14), in particular for open surfaces. On Fig. 14, we show the result of applying the Screened Poisson Reconstruction [51] after resampling the shutter: the sharp edges and details are much better enhanced.

We compare it with EAR [34] on a pyramid shape with engravings (Fig. 15) and sparse initial sampling. EAR and LPF both outperform Moving Least Squares and permit to upsample the shape while recovering the engravings. On the contrary, on the cube with curve model or ship point

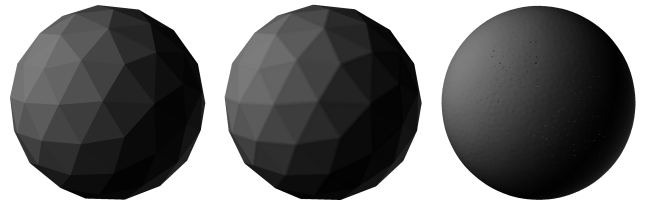


Fig. 10: Influence of the pattern radius r : mesh of a sphere with 100 vertices (left), extracting the dictionary and resampling from it with a small radius (middle) and a large radius (right). A larger radius captures large scale similarities. Both dictionaries contain 16 atoms. The normals for the point sets are estimated by PCA.

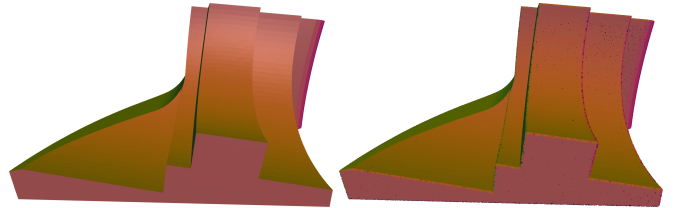


Fig. 11: Sampling the Fandisk mesh. Left: original mesh (6k vertices). Right: our resampling to 1M points, which shows the accuracy of our LPF-based method. Normals are computed by PCA analysis for the point set ($r = 0.2, M = 793, d = 16$, Shape diagonal: 7.61).

set, EAR is bound to fail at resampling faithfully the curve because of its manifold surface assumption (Figures 1, 8).

The obtained shape sampling rate is guided by the sampling rate of the pattern. This can experimentally be seen on Fig. 16, where a planar grid is used as pattern. In this experiment of a perfect plane resampling, the mean distance between two points is strongly linked to the distance between two points in the resampling pattern. If the pattern is a 16×16 grid (thus $M = 193$ points once intersected with a sphere) and $r = 1$, the grid step is 0.06 and the measured mean is 0.075. Similarly for a 32×32 grid and $M = 793$ (resp. a 64×64 grid and $M = 3205$) the grid

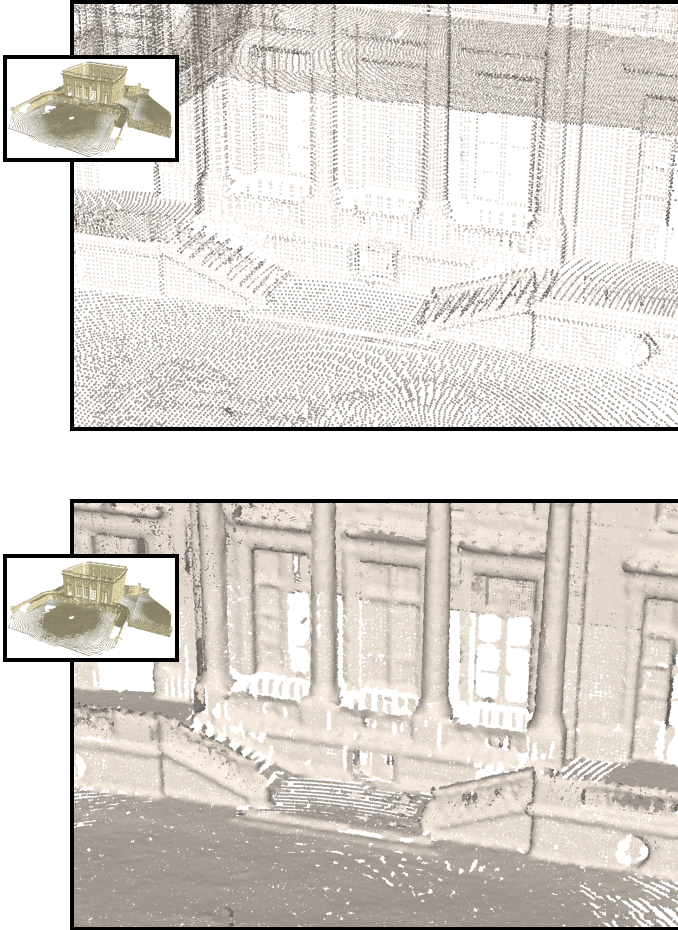


Fig. 12: Resampling the Trianon point set with close-up views. Top : original with 200K points; Bottom: result (2.2M points). Notice how the details are enhanced through the resampling while preserving the point set borders ($r = 0.003$, $M = 193$, $d = 32$, shape diagonal: 1.36). The Trianon point set is courtesy of CNRS-MAP laboratory.

step is 0.0312 (*resp.* 0.015) and the measured mean 0.0320 (*resp.* 0.015). The histograms of the distance to the nearest neighbors are also shown on Fig. 16. These distributions are very close to what Poisson disk sampling would do, which is due to the consolidation process. One can see that the sampling remains stable and the density is driven by the distance between points on the pattern.

One important feature of our method is its ability to learn the local dimension from the shape, which can be seen on the cube with curve point set (Fig. 8). EAR being particularly well suited for edge recovery, it performs better on the edges of the cube but it fails to recover the curve structure whenever it is too close to the shape. On the contrary, LPF is able to resample it. This advantage of our method can also be seen on the ship example (Fig. 1). We have enhanced the MLS-based resampling with an anisotropic behavior: we measure a local stretch ratio r_s , the ratio between the two largest covariance matrix eigenvalues. In the regions where r_s is below a threshold (3 in our case), MLS sampling occurs as expected, while regions where r_s is above the threshold are sampled as curves. This modification improves the sampling of the curves, but it still tends to blur the riggings,

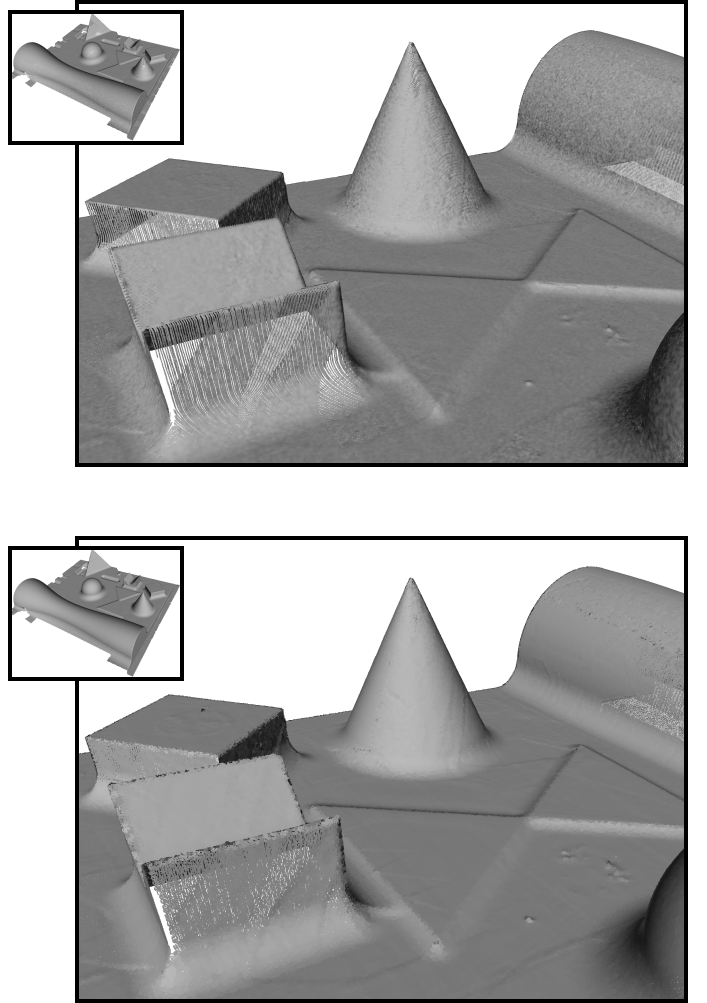


Fig. 13: Resampling the mire, by keeping the same number of points (15M). Top: original obtained by laser scanning technology, bottom: LPF resampling. The noise is well removed, and the sampling is regularized all over the shape ($r = 0.4$, $M = 193$, $d = 64$, shape diagonal: 285.35).

and creates spurious points. EAR fills the gaps between the ship’s rigging, whereas LPF nicely enhances them.

4.2 Point Set Denoising

The second application of our framework is point set denoising. Similarly to [53], we start from the initial point set S_0 and aim at finding the denoised point set S minimizing the following objective function:

$$\min_{S,D,\alpha} \|S - S_0\|^2 + \gamma \sum_{j=0}^{N-1} \|R_j(S) - D\alpha_j\|_F^2 + \lambda \sum_{j=0}^{N-1} \|\alpha_j\|_1 \quad (9)$$

where R_j is the operator that extracts the LPF at position s_j (*i.e.* $R_j(S) = V_j$) and γ, λ are two parameters constraining the data attachment and the sparsity. $\|S - S_0\|^2$ corresponds to the squared distance between the initial noisy point set and the current point set, measured as the sum of squared distances from points in S to their nearest neighbor in S_0 . This objective function is hard to minimize but is in fact closely linked to our minimization defined in

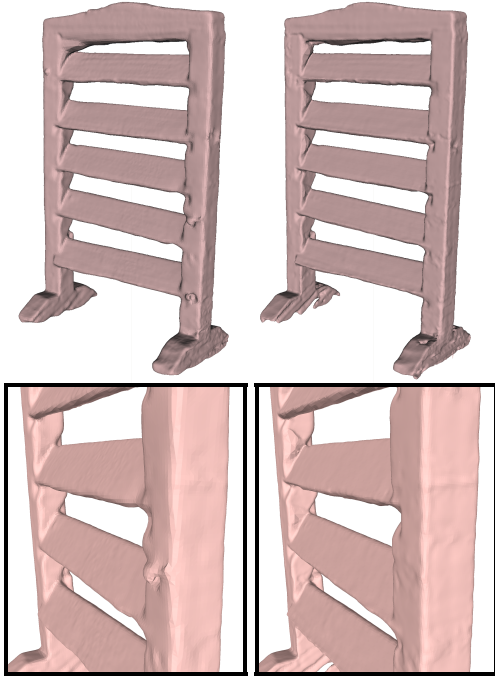


Fig. 14: The shutter model. Original point set obtained by laser scanning technology (left, 290K points), resampling (right, 2.0M points), both reconstructed with Screened Poisson Reconstruction [51] using the same parameters. Notice the enhancement of the sharp edges using our shape learning process ($r = 0.02$, $M = 193$, $d = 64$, shape diagonal: 2.07).

Equation (2). We solve it by splitting it into two steps that are iterated until the point set is stable

- The first step learns the dictionary and coefficients as well as the LPF positions and orientations.
- The second step uses the dictionary to find the best denoised point set.

The first step is exactly our shape analysis defined in Equation (2). Then, once the dictionary and coefficients are fixed, minimizing (9) amounts to solving in the second step:

$$\min_S \|S - S_0\|^2 + \gamma \sum_{j=0}^{N-1} \|R_j(S) - D\alpha_j\|_F^2. \quad (10)$$

Minimizing this energy means finding for each point q the best consensus among all LPFs that describe the vicinity of q . More precisely, each initial point q relates to a set of consolidated LPFs providing *better* candidate positions for this point, i.e. positions that fit better the dictionary decomposition. A *better* position estimation can thus be computed, similarly to the shape resampling application: starting with an initial point position q , each neighboring LPF proposes a new candidate position for q by projecting q onto the pattern support plane and computing a position q_i from the set of v_i s. All candidate positions are then averaged as:

$$\tilde{q} = \frac{\sum_i w(q, q_i) q_i}{\sum_i w(q, q_i)} \text{ with } w(q, p) = \exp -\frac{\|p - q\|^2}{2\tau_p^2}. \quad (11)$$

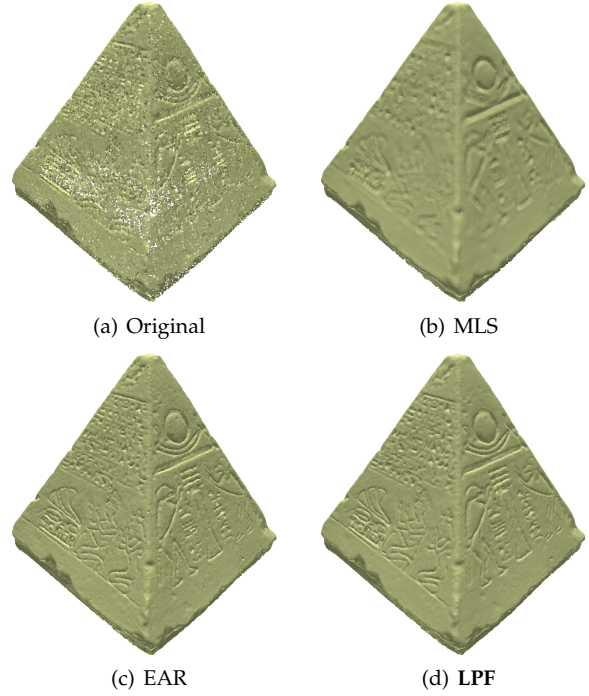


Fig. 15: The pyramid (initial: top left, 280K points) resampled using standard MLS (top right), EAR (bottom left) and our analysis framework (bottom right). EAR and LPF both manage to recover the details. All resampled point sets have the same number of points (2.2M points), and their normals are recomputed using Hoppe et al.'s method [52] with the same parameters ($r = 0.8$, $M = 793$, $d = 64$, shape diagonal: 125.51).

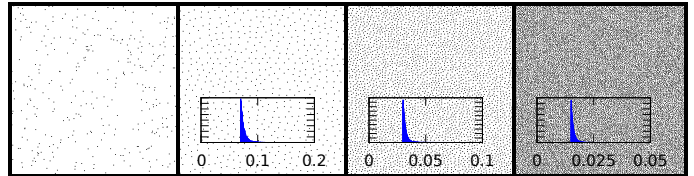


Fig. 16: Resampling a randomly sampled perfect plane. Effect of the sampling rate of the pattern, the same radius r is kept, but the pattern grid size is changed. From left to right: original, $M = 193, 793, 3205$. For each value, nearest neighbor distance histograms are also shown.

The point q is then moved toward the proposed position at a rate γ :

$$q_{denoised} = \frac{q + \gamma \tilde{q}}{1 + \gamma} \quad (12)$$

and this process is repeated until the denoised positions are stable (or after a chosen number of iterations).

In all denoising experiments, we initially set one LPF per sample point. This way all points are represented equally. We also set $\gamma = 0.5$ (moving the point halfway toward its guessed position). On Figure 17, we show the denoising iterations of the shape learning process. The method performs well at removing noise while preserving the features. On figure 18, we compare our approach with the bilateral filter [54] adapted to point clouds and show

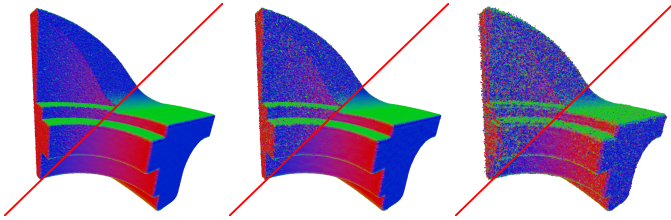


Fig. 17: Denoising the Fandisk point set (600K points). From left to right: noisy point sets (noise standard deviations: 1%, 1.5%, 2% of the shape diagonal) and their corresponding denoised shapes. Normals are computed by local quadric fitting ($r = 0.2$, $M = 193$, $d = 8$, shape diagonal: 7.61).

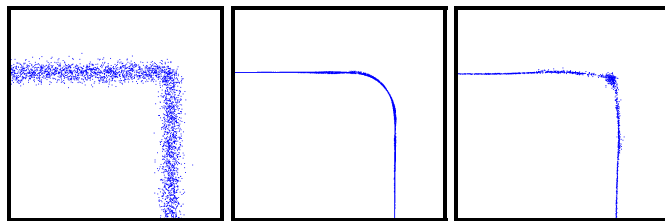
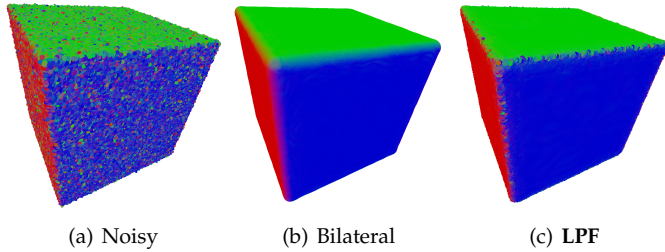


Fig. 18: Denoising a noisy cube (left) and comparison between the Bilateral Filter [54] adapted to point sets (middle), and LPF framework (right). Top row: point sets with normal computed by quadric fitting, bottom: close-up on a slice of the point set. The parameters for the bilateral filter were tuned to get the same error as the LPF denoising (error computed with respect to the noise-free model on the cube facets). $r = 0.2$, $d = 3$, $M = 193$, shape diagonal: 9.08.

that the edge is less smoothed out using our approach. On Figure 19 we compare LPF denoising with several denoising methods. One can see that the bilateral filter [54] tends to oversmooth the details, RIMLS [41] tends to create some low-frequency artifacts on the surface while still preserving the details well, ℓ^0 denoising [44] tends to create spurious artifacts. WLOP [36] outputs a better compromise between feature preservation and noise removal, yet some low-frequency artifacts remain in areas that should be smooth. Our LPF based denoising permits to denoise featured and smooth areas without adding low-frequency artifacts.

Our method is particularly well suited for point sets that represent a mix of surfaces and curves. In this setting normals are irrelevant and all methods based on normal estimation fail. This is the case for the bilateral filter [54], APSS [40], RIMLS [41] as well as more complex sparsity-regularized denoising methods [44].

On Fig. 20 and Table 1, we compare visually and quantitatively the performance of our denoising algorithm on a

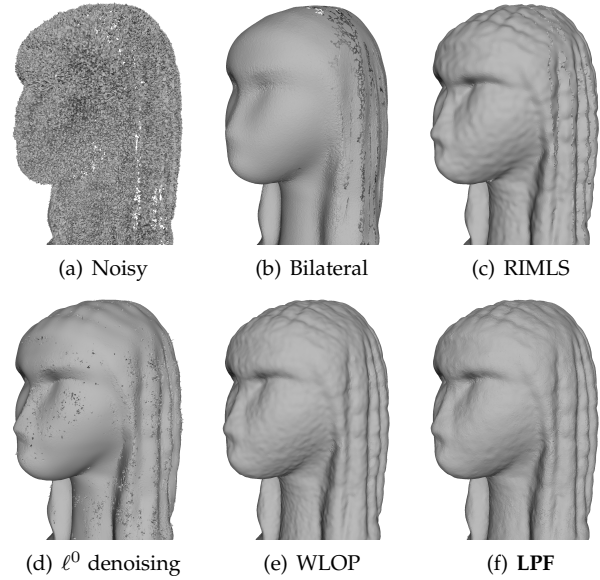


Fig. 19: Denoising the Brassempouy point set with added noise of variance 0.4% of the diagonal. From left to right: initial shape, bilateral, RIMLS [41] (Meshlab implementation with depth 6), ℓ^0 denoising [44], WLOP [36] and LPF ($r = 0.7$, $M = 193$, $d = 32$, shape diagonal 51.96). For visualization purpose, all shapes were reconstructed as interpolating meshes.

Denoising Method	Initial Noise Level		
	0.124	0.25	0.38
APSS	0.085	0.242	0.301
RIMLS	0.081	0.201	0.272
Bilateral	0.071	0.155	0.231
WLOP	0.051	0.214	0.352
LPF	0.017	0.054	0.104

TABLE 1: RMSE of the denoising results on the shape of Fig. 20 using APSS, RIMLS, the bilateral filter, WLOP and our LPF denoising. All errors are given in distance units. The first column corresponds to the results shown on Figure 20.

synthetic point cloud. Only our algorithm is able to denoise correctly both the surface and the curve net. Notice that Weighted Locally Optimal Projection (WLOP) [36] recovers the curves better than the other state-of-the art algorithms, although it is outperformed by our LPF approach.

4.3 Implementation details

Our algorithm was implemented in C++ using the Eigen library for matrix representation. For a non-optimized code and 1.1 million input point set, covered by 100000 LPFs with a pattern containing 193 points (a pattern of 16×16 points intersected with a sphere) and a dictionary of 32 atoms, the initial LPF computation took 30s and the shape learning process took 150s (10 iterations of dictionary computation, pose estimation and recomputation) on a 4-core Intel®Core™i7 laptop.

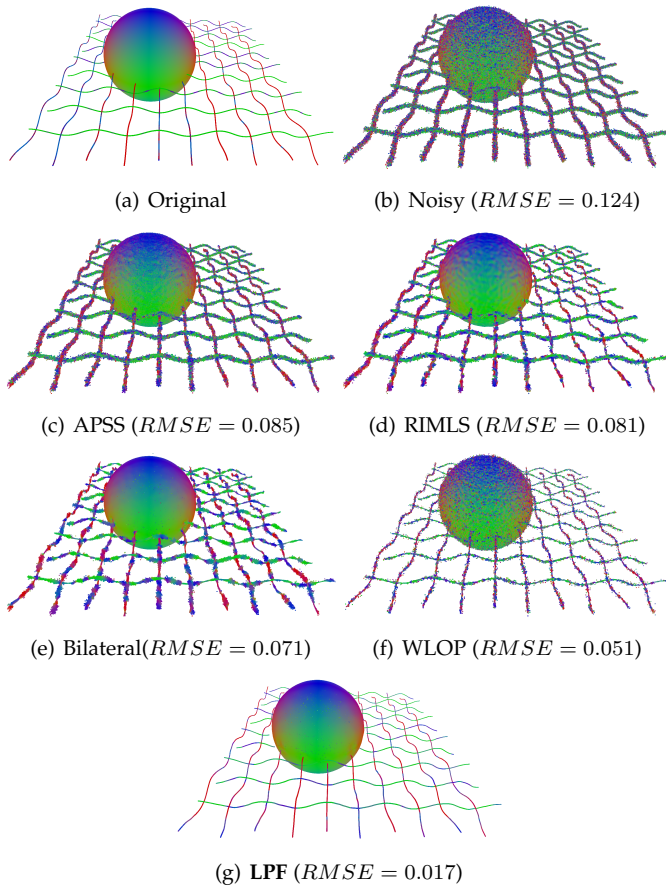


Fig. 20: Comparison with standard denoising methods on a synthetic point set (400K points). Only our algorithm is able to handle the curves, while algorithms relying on a manifold surface assumption fail to denoise the shape. Root Mean Square Errors with respect to the noise-free synthetic data are given (400K LPFs, $r = 0.5$, $M = 193$, $d = 16$, shape diagonal 47.29).

5 LIMITATIONS

The principal limitation of our method is that it learns shapes in a statistical manner: an important feature that is not frequent enough will not be accounted for in the shape dictionary. As an example, no corner is present in the cube with curve dictionary (Figure 7). To overcome this limitation one could devise a strategy that adds more LPFs where the representation error is largest. This would however require further analysis to ensure that the added information does not correspond to noise. Moreover, optimizing the shape of the template during analysis could also improve the results quality. One should notice that the dictionary is learned on a specific shape, and analyzing another shape might not be done as efficiently using the same dictionary, except if both shapes share local similarities.

Outliers are also a limitation of our method. Indeed, if a LPF is centered at an outlier position then the LPF will represent a single point. In the joint analysis this LPF will be replaced by a consolidated version which would have little sense. This can be easily alleviated by adding a preprocessing step to remove outliers.

Finally, our method requires some parameters: the user has to choose both the scale and the dictionary size. The choice of a scale can be argued for, since the analysis reveals different similarities depending on the chosen scale. The size of the dictionary is application and data-dependent; it should be large enough to encode shape variations but small enough for similarities to emerge. It is simple to set for geometric shapes, such as cubes, but more difficult for complex natural shapes. Selecting a good dictionary size is still an open issue that we want to explore in future works.

6 CONCLUSION AND FUTURE WORK

We have introduced a pliable framework to analyze shapes by consolidating Local Probing Fields defined in the ambient space around the whole shape. By jointly analyzing this set of descriptions we provided a new tool for sparse shape description expressed as a dictionary learning problem. As demonstrated in our experiments, this tool allows the shape to reveal its non-local similarities. The efficiency of this framework is illustrated on shape resampling and point set denoising applications. As a future work we mean to study the theoretical properties of the Local Probing Fields and in particular possible improvements of the statistical properties of the consolidated point distribution. A whole set of applications of our framework remains to be explored, including shape compression, segmentation and registration, as well as the extension of our approach to shape collections.

ACKNOWLEDGMENTS

This work was supported by the ANR PAPS project, grant ANR-14-CE27-0003 of the French Agence Nationale de la Recherche.

REFERENCES

- [1] N. J. Mitra, M. Pauly, M. Wand, and D. Ceylan, "Symmetry in 3d geometry: Extraction and applications," *Computer Graphics Forum*, vol. 32, no. 6, pp. 1–23, 2013.
- [2] M. Pauly, N. J. Mitra, J. Wallner, H. Pottmann, and L. J. Guibas, "Discovering structural regularity in 3d geometry," *ACM Transactions on Graphics, Proc SIGGRAPH'08*, no. 3, pp. 43:1–43:11, 2008.
- [3] A. Buades, B. Coll, and J.-M. Morel, "A non-local algorithm for image denoising," in *IEEE Conference on Computer Vision and Pattern Recognition*, 2005, pp. 60–65.
- [4] E. Shechtman and M. Irani, "Matching local self-similarities across images and videos," *2007 IEEE Conference on Computer Vision and Pattern Recognition*, pp. 1–8, 2007.
- [5] S. Yoshizawa, A. Belyaev, and H.-P. Seidel, "Smoothing by example: Mesh denoising by averaging with similarity-based weights," in *SMI '06*. IEEE, 2006, p. 9.
- [6] J. Digne, "Similarity based filtering of point clouds." in *CVPR Workshops*. IEEE, 2012, pp. 73–79.
- [7] A. Hamdi-Cherif, J. Digne, and R. Chaine, "Super-resolution of point set surfaces using local similarities," *to appear in Computer Graphics Forum*, 2017.
- [8] T. Guillemot, A. Almansa, and T. Boubekeur, "Non local point set surfaces," in *Proc. 3DIMPVT 2012*, 2012, pp. 324–331.
- [9] A. Sharf, M. Alexa, and D. Cohen-Or, "Context-based surface completion," *ACM Transactions on Graphics*, vol. 23, no. 3, pp. 878–887, 2004.
- [10] Q. Zheng, A. Sharf, G. Wan, Y. Li, N. J. Mitra, D. Cohen-Or, and B. Chen, "Non-local scan consolidation for 3d urban scenes," *ACM Transactions on Graphics, Proc. SIGGRAPH 10*, 2010.

- [11] M. Aharon, M. Elad, and A. Bruckstein, "k-svd: An algorithm for designing overcomplete dictionaries for sparse representation," *IEEE Transactions on Signal Processing*, vol. 54, 2006.
- [12] J. Mairal, F. Bach, J. Ponce, and G. Sapiro, "Online dictionary learning for sparse coding," in *International Conference on Machine Learning*. ACM, 2009, pp. 689–696.
- [13] S. Xiong, J. Zhang, J. Cai, and L. Liu, "Robust surface reconstruction via dictionary learning," *ACM Transactions On Graphics, Proc. SIGGRAPH Asia 2014*, vol. 33, 2014.
- [14] R. Litman, A. Bronstein, M. Bronstein, and U. Castellani, "Supervised learning of bag-of-features shape descriptors using sparse coding," *Computer Graphics Forum*, vol. 33, no. 5, pp. 127–136, 2014.
- [15] J. Digne, R. Chaine, and S. Valette, "Self-similarity for accurate compression of point sampled surfaces," *Computer Graphics Forum*, vol. 33, no. 2, pp. 155–164, 2014, proceedings of Eurographics 2014.
- [16] L. Xu, R. Wang, J. Zhang, Z. Yang, J. Deng, F. Chen, and L. Liu, "Survey on sparsity in geometric modeling and processing," *Graphical Models*, vol. 82, pp. 160–180, 2015.
- [17] Y. Lipman, O. Sorkine, D. Cohen-Or, D. Levin, C. Rossi, and H.-P. Seidel, "Differential coordinates for interactive mesh editing," in *Proc. SMI 2004*. IEEE, 2004, pp. 181–190.
- [18] O. Sorkine, D. Cohen-Or, Y. Lipman, M. Alexa, C. Rössl, and H.-P. Seidel, "Laplacian surface editing," *Computer Graphics Forum (Proc. SGP 2004)*, pp. 179–188, 2004.
- [19] R. Wang, L. Liu, Z. Yang, K. Wang, W. Shan, J. Deng, and F. Chen, "Construction of manifolds via compatible sparse representations," *ACM Transactions on Graphics*, vol. 35, no. 2, pp. 14:1–14:10, 2016.
- [20] D. G. Lowe, "Distinctive image features from scale-invariant keypoints," *International journal of computer vision*, vol. 60, no. 2, pp. 91–110, 2004.
- [21] A. E. Johnson and M. Hebert, "Using spin images for efficient object recognition in cluttered 3d scenes," *IEEE Transactions on Pattern Analysis and Machine Intelligence*, vol. 21, pp. 433–449, 1999.
- [22] F. Tombari, S. Salti, and L. Di Stefano, "Unique signatures of histograms for local surface description," in *IEEE European Conference on Computer Vision*. Springer-Verlag, 2010, pp. 356–369.
- [23] S. Belongie, J. Malik, and J. Puzicha, "Shape matching and object recognition using shape contexts," *IEEE Transactions on Pattern Analysis and Machine Intelligence*, vol. 24, pp. 509–522, 2002.
- [24] I. Kokkinos, M. M. Bronstein, R. Litman, and A. M. Bronstein, "Intrinsic shape context descriptors for deformable shapes," in *IEEE Conference on Computer Vision and Pattern Recognition, June 2012*, pp. 159–166.
- [25] A. Zaharescu, E. Boyer, K. Varanasi, and R. Horaud, "Surface feature detection and description with applications to mesh matching," in *IEEE Conference on Computer Vision and Pattern Recognition, June 2009*, pp. 373–380.
- [26] J. Sun, M. Ovsjanikov, and L. Guibas, "A concise and provably informative multi-scale signature based on heat diffusion," *Computer Graphics Forum (Proc. SGP 2009)*, pp. 1383–1392, 2009.
- [27] N. Li, S. Wang, M. Zhong, Z. Su, and H. Qin, "Generalized local-to-global shape feature detection based on graph wavelets," *IEEE Transactions on Visualization and Computer Graphics*, vol. 22, no. 9, pp. 2094–2106, Sept 2016.
- [28] A. M. Bronstein, M. M. Bronstein, L. J. Guibas, and M. Ovsjanikov, "Shape google: Geometric words and expressions for invariant shape retrieval," *ACM Transactions on Graphics*, vol. 30, pp. 1–20, 2011.
- [29] O. Mattausch, D. Panozzo, C. Mura, O. Sorkine-Hornung, and R. Pajarola, "Object detection and classification from large-scale cluttered indoor scans," *Computer Graphics Forum*, vol. 33, no. 2, pp. 11–21, 2014.
- [30] L. Wei, Q. Huang, D. Ceylan, E. Vouga, and H. Li, "Dense human body correspondences using convolutional networks," *CoRR*, vol. abs/1511.05904, 2015.
- [31] J. Masci, D. Boscaini, M. M. Bronstein, and P. Vandergheynst, "Geodesic convolutional neural networks on riemannian manifolds," in *ICCV Workshops 2015*. IEEE, 2015.
- [32] D. Boscaini, J. Masci, E. Rodolà, and M. M. Bronstein, "Learning shape correspondence with anisotropic convolutional neural networks," *CoRR*, vol. abs/1605.06437, 2016.
- [33] H. Huang, D. Li, H. Zhang, U. Ascher, and D. Cohen-Or, "Consolidation of unorganized point clouds for surface reconstruction," *ACM Transactions on Graphics*, vol. 28, pp. 176:1–176:78, 2009.
- [34] H. Huang, S. Wu, M. Gong, D. Cohen-Or, U. Ascher, and H. R. Zhang, "Edge-aware point set resampling," *ACM Transactions on Graphics*, vol. 32, no. 1, pp. 9:1–9:12, Feb. 2013.
- [35] Y. Lipman, D. Cohen-Or, D. Levin, and H. Tal-Ezer, "Parameterization-free projection for geometry reconstruction," *ACM Transactions on Graphics*, vol. 26, 2007.
- [36] H. Huang, D. Li, H. Zhang, U. Ascher, and D. Cohen-Or, "Consolidation of unorganized point clouds for surface reconstruction," in *SIGGRAPH Asia 2009*. ACM, 2009, pp. 176:1–176:7.
- [37] M. Alexa, J. Behr, D. Cohen-Or, S. Fleishman, D. Levin, and C. T. Silva, "Point set surfaces," in *Proc. Vis '01*. IEEE, 2001, pp. 21–28.
- [38] N. Amenta and Y. J. Kil, "Defining point-set surfaces," in *SIGGRAPH '04*. USA: ACM Press, 2004, pp. 264–270.
- [39] S. Fleishman, D. Cohen-Or, and C. T. Silva, "Robust moving least-squares fitting with sharp features," *ACM Transactions on Graphics*, vol. 24, no. 3, pp. 544–552, 2005.
- [40] G. Guennebaud and M. Gross, "Algebraic point set surfaces," *ACM Transactions on Graphics*, vol. 26, 2007, proc. SIGGRAPH 2007.
- [41] A. C. Oztireli, G. Guennebaud, and M. Gross, "Feature preserving point set surfaces based on non-linear kernel regression," *Computer Graphics Forum*, vol. 28, pp. 493–501(9), 2009.
- [42] S. Wu, H. Huang, M. Gong, M. Zwicker, and D. Cohen-Or, "Deep points consolidation," *ACM Transactions on Graphics*, vol. 34, no. 6, pp. 176:1–176:13, 2015.
- [43] R. Wang, Z. Yang, L. Liu, J. Deng, and F. Chen, "Decoupling noise and features via weighted ℓ_1 -analysis compressed sensing," *ACM Transactions on Graphics*, vol. 33, no. 2, pp. 18:1–18:12, Apr. 2014.
- [44] Y. Sun, S. Schaefer, and W. Wang, "Denoising point sets via L_0 minimization," *Computer Aided Geometric Design*, vol. 3536, pp. 2–15, 2015, geometric Modeling and Processing 2015.
- [45] H. Zhang, C. Wu, J. Zhang, and J. Deng, "Variational mesh denoising using total variation and piecewise constant function space," *IEEE Transactions on Visualization and Computer Graphics*, vol. 21, no. 7, pp. 873–886, July 2015.
- [46] X. Lu, Z. Deng, and W. Chen, "A robust scheme for feature-preserving mesh denoising," *IEEE Transactions on Visualization and Computer Graphics*, vol. 22, no. 3, pp. 1181–1194, March 2016.
- [47] M. Wei, J. Yu, W. M. Pang, J. Wang, J. Qin, L. Liu, and P. A. Heng, "Bi-normal filtering for mesh denoising," *IEEE Transactions on Visualization and Computer Graphics*, vol. 21, no. 1, pp. 43–55, Jan 2015.
- [48] P. J. Besl and N. D. McKay, "A method for registration of 3-d shapes," *IEEE Transactions Pattern Analysis and Machine Intelligence*, vol. 14, no. 2, pp. 239–256, 1992.
- [49] J. Mairal, F. Bach, J. Ponce, and G. Sapiro, "Online learning for matrix factorization and sparse coding," *J. Mach. Learn. Res.*, vol. 11, pp. 19–60, 2010.
- [50] B. Efron, T. Hastie, I. Johnstone, and R. Tibshirani, "Least angle regression," *Annals of Statistics*, vol. 32, pp. 407–499, 2004.
- [51] M. Kazhdan and H. Hoppe, "Screened poisson-surface reconstruction," *ACM Transactions on Graphics*, 2013.
- [52] H. Hoppe, T. DeRose, T. Duchamp, J. McDonald, and W. Stuetzle, "Surface reconstruction from unorganized points," in *SIGGRAPH '92*, 1992, pp. 71–78.
- [53] M. Elad and M. Aharon, "Image denoising via sparse and redundant representations over learned dictionaries," *IEEE Transactions on Image Processing*, vol. 15, no. 12, pp. 3736–3745, Dec 2006.
- [54] S. Fleishman, I. Drori, and D. Cohen-Or, "Bilateral mesh denoising," *ACM Transactions on Graphics*, vol. 22, no. 3, pp. 950–953, 2003.



Julie Digne Julie Digne is a junior CNRS researcher at LIRIS laboratory working in Geometry Processing. She obtained her PhD in 2010 in applied mathematics at Ecole Normale Supérieure de Cachan in 2010, which was awarded the Jacques Hadamard Foundation for Mathematics PhD award. She was a post-doc at INRIA. She joined the GeoMod team at LIRIS, University of Lyon in 2012, her current work focuses on point set surface processing including denoising and super-resolution.



Sébastien Valette Sébastien Valette is a CNRS Researcher at CREATIS, Lyon, France. He received the Electrical Engineering degree and PhD Degree at INSA-Lyon in 2002. His research interests include geometry processing, data compression and image analysis.



Raphaëlle Chaine 's research interests include geometry processing, geometric modeling and virtual sculpture. She graduated with the M.S. Degree at Ecole Centrale de Lyon in 1995. After completing her PhD in computer science from the Université Claude Bernard in France, in the domain of point set surfaces analysis, she joined the PRISME Geometrica team at INRIA Sophia Antipolis in 2000. There, she focused her work on 3D reconstruction and computational geometry. In 2003 Raphaëlle joined the LIRIS (CNRS)

laboratory where she was promoted to a professor position in 2013 at Lyon 1 University.