



Modulation of Malaria Infection in *Anopheles gambiae* Mosquitoes Exposed to Natural Midgut Bacteria

Majoline T. Tchioffo, Anne Boissiere, Thomas S. Churcher, Luc Abate,
Geoffrey Gimonneau, Sandrine E. Nsango, Parfait H. Awono-Ambene,
Richard Christen, Antoine Berry, Isabelle Morlais

► To cite this version:

Majoline T. Tchioffo, Anne Boissiere, Thomas S. Churcher, Luc Abate, Geoffrey Gimonneau, et al..
Modulation of Malaria Infection in *Anopheles gambiae* Mosquitoes Exposed to Natural Midgut Bac-
teria. PLoS ONE, 2013, 8 (12), pp.e81663. 10.1371/journal.pone.0081663 . hal-01546172

HAL Id: hal-01546172

<https://hal.science/hal-01546172>

Submitted on 25 May 2021

HAL is a multi-disciplinary open access archive for the deposit and dissemination of scientific research documents, whether they are published or not. The documents may come from teaching and research institutions in France or abroad, or from public or private research centers.

L'archive ouverte pluridisciplinaire **HAL**, est destinée au dépôt et à la diffusion de documents scientifiques de niveau recherche, publiés ou non, émanant des établissements d'enseignement et de recherche français ou étrangers, des laboratoires publics ou privés.

Modulation of Malaria Infection in *Anopheles gambiae* Mosquitoes Exposed to Natural Midgut Bacteria

Majoline T. Tchioffo^{1,2}, Anne Boissière¹, Thomas S. Churcher³, Luc Abate¹, Geoffrey Gimonneau^{1,2}, Sandrine E. Nsango^{2,4}, Parfait H. Awono-Ambéné², Richard Christen^{5,6}, Antoine Berry⁷, Isabelle Morlais^{1,2*}

1 UMR MIVEGEC (IRD 224- CNRS 5290- UM1- UM2), Institut de Recherche pour le Développement, Montpellier, France, **2** Laboratoire d'entomologie médicale, Organisation de Coordination pour la lutte contre les Endémies en Afrique Centrale, Yaoundé, Cameroon, **3** Department of Infectious Disease Epidemiology, Imperial College London, London, United Kingdom, **4** Université de Douala, Faculté de Médecine et des Sciences Pharmaceutiques, Douala, Cameroon, **5** CNRS UMR 7138, Université de Nice, Faculté des Sciences, Nice, France, **6** Laboratoire de Biologie Virtuelle, UMR 713, Université de Nice, Faculté des Sciences, Nice, France, **7** Service de Parasitologie-Mycologie, Centre Hospitalier Universitaire de Toulouse, Hôpital Rangueil, Toulouse, France

Abstract

The development of *Plasmodium falciparum* within the *Anopheles gambiae* mosquito relies on complex vector-parasite interactions, however the resident midgut microbiota also plays an important role in mediating parasite infection. In natural conditions, the mosquito microbial flora is diverse, composed of commensal and symbiotic bacteria. We report here the isolation of culturable midgut bacteria from mosquitoes collected in the field in Cameroon and their identification based on the 16S rRNA gene sequencing. We next measured the effect of selected natural bacterial isolates on *Plasmodium falciparum* infection prevalence and intensity over multiple infectious feedings and found that the bacteria significantly reduced the prevalence and intensity of infection. These results contrast with our previous study where the abundance of *Enterobacteriaceae* positively correlated with *P. falciparum* infection (Boissière et al. 2012). The oral infection of bacteria probably led to the disruption of the gut homeostasis and activated immune responses, and this pinpoints the importance of studying microbe-parasite interactions in natural conditions. Our results indicate that the effect of bacterial exposure on *P. falciparum* infection varies with factors from the parasite and the human host and calls for deeper dissection of these parameters for accurate interpretation of bacterial exposure results in laboratory settings.

Citation: Tchioffo MT, Boissière A, Churcher TS, Abate L, Gimonneau G, et al. (2013) Modulation of Malaria Infection in *Anopheles gambiae* Mosquitoes Exposed to Natural Midgut Bacteria. PLoS ONE 8(12): e81663. doi:10.1371/journal.pone.0081663

Editor: Kristin Michel, Kansas State University, United States of America

Received: May 12, 2013; **Accepted:** October 15, 2013; **Published:** December 6, 2013

Copyright: © 2013 Tchioffo et al. This is an open-access article distributed under the terms of the Creative Commons Attribution License, which permits unrestricted use, distribution, and reproduction in any medium, provided the original author and source are credited.

Funding: This work was supported by funds from the Institut de Recherche pour le Développement (IRD), the Agence Nationale de la Recherche (grant awarded to IM, ANR-11-BSV7-009-01), the APEGE programme from the Institut Ecologie et Environnement and the European Union Seventh Framework Programme (FP7) (grant agreements N° 242095- EVIMalaR and N° 223601- MALVECBLOK). MTT and SEN were supported by a fellowship from the Infectiopole Sud foundation and GG from the IRD. The funders had no role in study design, data collection and analysis, decision to publish, or preparation of the manuscript.

Competing Interests: The authors have declared that no competing interests exist.

* E-mail: isabelle.morlais@ird.fr

Introduction

Malaria remains a major public health burden in developing African countries, with approximately 1 million malaria deaths were reported in 2010 alone [1]. In Sub-saharan Africa, *Plasmodium falciparum* is responsible for the devastating impact of the disease and *Anopheles gambiae* is its main mosquito vector. Malaria parasites are transmitted from human to mosquito when a female *Anopheles* ingests a blood meal from a gametocyte-infected human host. In the mosquito midgut, malaria parasites undergo a series of complex developmental stages and transmission depends on the success of the different transition steps (reviewed in [2,3]). The major loss of parasites occurs during the ookinete-to-oocyst transition, when the motile ookinetes traverse the midgut epithelium and develop into oocysts resting beneath the basal lamina of the midgut wall [2].

Recently, functional and high-throughput genomic approaches have significantly improved our understanding of vector-parasite interactions that underlie parasite establishment within the mosquito [4–9]. Midgut colonization relies on cellular and

molecular events but it is now recognized that ecological factors that shape the mosquito distribution play an important role for parasite transmission [10–12]. In particular, the mosquito midgut microbiota have been shown to modulate parasite infection [11,13–18]. A protective role of *An. gambiae* midgut bacteria against *Plasmodium* infections was demonstrated when the use of antibiotic treatments to clear the midgut microbiota resulted in enhanced *P. falciparum* infections [5,19]. By contrast, co-infections of bacteria with *P. falciparum* exhibited a reduced number of developing oocysts in the mosquito midgut, both in laboratory and field studies [5,13–17,20,21]. The underlying mechanisms by which bacteria can influence parasite numbers remains elusive. It has been suggested that the interaction between commensal bacteria and the mosquito epithelial cells invaded by *P. falciparum* would elicit immune responses leading to reduced levels of parasite burden, though it could be due to bacteria producing toxins with anti-*Plasmodium* activity [8,14,22].

We have previously shown that the composition of the midgut microbiota is a major component that determines mosquito competence, and by contrast to co-infection studies we found in

field mosquitoes with native midgut microbiota that the abundance of *Enterobacteriaceae* was positively correlated with the *P. falciparum* infection [11]. Understanding how midgut microbial communities, especially enterobacteria, affect the mosquito vector competence remains a significant challenge.

In the present study, we screened culturable midgut bacteria in field collected *An. gambiae* mosquitoes from Cameroon using the MacConkey agar, which is particularly suitable for the isolation of bacteria from the *Enterobacteriaceae* family. We next examined the role of a set of the identified bacteria strains on *P. falciparum* transmission by feeding bacteria-challenged mosquitoes on blood from naturally-infected gametocyte carriers and provide new findings on the effect of midgut bacteria on malaria parasite development.

Materials and Methods

Ethics statement

All procedures involving human subjects used in this study were approved by the Cameroonian national ethical committee (statements 099/CNE/CE/09 and 046/CNE/SE/2012). Children identified as gametocyte carriers were enrolled as volunteers after their parents or legal guardians had signed an informed consent form. All necessary permits were obtained for the described field studies (statement 099/CNE/SE/09 and 046/CNE/SE/2012). Collections did not involve any protected species, and the collecting sites were either public areas or private gardens; in the latter case, the owner gave the permission for collection.

Collection of mosquitoes and midgut samples

An. gambiae mosquitoes were sampled in their aquatic habitats at the L4 and pupae stages. Immature stages were collected in four localities in the vicinity of Yaoundé: Mvan (11°30'28"E, 3°48'22"N, Nkolondom (11°29'49"E, 3°57'20"N), Nkolbisson (11°27'09"E, 3°52'10"N), and Nkolokumu (11°22'18"E, 3°51'02"N). Collections were performed during a two month period, from September to October 2011. Larvae and pupae from each breeding site were kept in a 5-liter container for transportation back to the insectary at the Organisation de Coordination pour la lutte contre les Endémies en Afrique Centrale (OCEAC). Anopheline larvae and pupae were identified morphologically; non anopheline individuals and predators were removed. Pupae were placed in a 20-ml water-containing cup in a 30×30 cm cage for emergence. Larvae were kept in the water from their original habitat in a 3-liter plastic bucket and resulting pupae collected daily for 2 days; adult mosquitoes were collected immediately after emergence.

Larvae, pupae and newly emerged adult (1–2 day old) mosquitoes were selected for midgut microbiota analysis. Mosquitoes were cold-anesthetized and all dissections were processed under sterile conditions. Mosquitoes were surface sterilized with a 70% ethanol solution, as previously reported [23], and then rinsed three times in sterile phosphate-buffered saline (PBS). Midguts were then carefully removed under a stereo microscope (10× magnification) using clean forceps and ground individually in 50 µl of sterile PBS using a single-use pestle.

Isolation of midgut and environmental bacteria

The MacConkey agar (European Pharm.) was used in this study because of its particular suitability as a selective culture medium for the isolation of Gram-negative bacteria, especially the family of *Enterobacteriaceae*. Each midgut homogenate was plated on MacConkey agar using the streak plate dilution method to obtain isolated bacterial colonies. To retrieve the bacterial content from

the water of each breeding site, a 250-ml volume of water collected directly in the field and kept in sterile bottle flask was filtered through Whatman #1 paper. Each filter paper was cut into three pieces and deposited on MacConkey agar, then plated by streaking. All cultures were maintained at 37°C under aerobic conditions for 24 hours. Individual bacterial colonies were restreaked to ensure single colony isolation. The MacConkey agar medium allows differentiation between lactose-fermenting and non-lactose fermenting Gram-negative bacteria; lactose fermenting bacteria appear as red/pink colonies whereas those non-fermenting bacteria produce white/colorless colonies. Colonies with distinct morphologies, colors and margins were picked and sub-cultured into Luria-Bertani (LB) agar (Invitrogen) to obtain pure bacterial isolates. Single colonies were harvested in LB broth and stored at −80°C as glycerol stocks.

Genomic DNA extraction, amplification, sequencing and analysis of the 16S rRNA gene

The pure bacterial isolates were sub-cultured once more, 5 colonies per plate were picked and subjected to genomic DNA extraction using the Qiagen DNeasy Blood & Tissue kit (Valencia, CA) according to the manufacturer instructions. Amplification of the 16S rRNA gene from purified genomic DNAs was carried out with the universal primers w18 (5'-GAGTTTGTATCMTGGCT-CAG-3') and w02 (5'-GNTACCTTGTTACGACTT-3') [24]. PCR reactions were performed using the following cycling conditions: an initial denaturation at 94°C for 2 min, 25 cycles at 94°C for 1 min, 50°C for 1 min and 72°C for 1 min, and a final extension at 72°C for 20 min. The expected size of the PCR product, ~1,400 base pairs (bp), was confirmed by electrophoresis on a 1.5% agarose gel stained with ethidium bromide and visualized by UV transillumination.

Amplicons were purified using the Agencourt AMPure PCR DNA purification kit (Agencourt, Beverly, MA) and subjected to direct bidirectional sequencing with the original primers (w18 and w02). The primers 531F (5'-GTGCCAGCAGCCGCGGT-3') and 805R (5'-TCGACATCGTTTACGGCGTC-3') were used as internal primers to obtain high quality full sequences. Sequencing reactions were performed using the BigDye Terminator v3.1 mix and the sequencing products were cleaned with CleanSEQ magnetic beads (Agencourt, Beverly, MA) and analyzed on a 3130xl genetic analyzer (Applied Biosystems, Foster City, CA, USA).

Sequences of the 16S rRNA gene were assembled and analyzed with SeqScape software, version 2.5 (Applied Biosystems). Short read contigs (<700 bp) were removed from the analyses, and potential chimera sequences were screened using Mallard 1.02 Bioinformatics toolkit (available at <http://www.softsea.com/download/Mallard.html>). Homology searches were performed against the Silva reference database (release 111, available at <http://www.arb-silva.de/>) to identify the closest genetic match for each sequence. Sequences obtained in this study were deposited in GenBank under accession numbers JQ680470 to JQ680962.

Mosquito maintenance and experimental challenge of mosquitoes with natural bacteria

Mosquitoes of the Nguosso strain of *An. gambiae* were obtained from egg batches that were surface-sterilized by bleaching [25]. All precautions were taken to prevent contaminations by environmental bacteria. Larvae were reared in distilled water and fed with TetraMin Baby food. We checked for resident midgut bacteria by plating midguts from L4 larvae onto chromID CPS (Biomerieux) and LB agar plates. No Gram-positive bacteria were identified,

only a few colonies of Gram-negative bacteria corresponding to *Elizabethkingia anophelis*, a bacteria colonizing *An. gambiae* in insectaries [26], were recovered. Adult mosquitoes were maintained on a 6% sucrose solution in sterile PBS at $27 \pm 2^\circ\text{C}$ and $85 \pm 5\%$ relative humidity with a 12 hours light/dark cycle.

Different bacterial strains isolated from the midgut of wild-caught *An. gambiae* mosquitoes were selected to challenge mosquitoes of the Ngousso strain. We used bacterial strains closely related to *Escherichia*, *Serratia*, *Enterobacter*, *Pseudomonas*, *Acinetobacter* and *Comamonas* genera as they were previously shown to affect pathogen transmission in different insect vectors [14,17,23,27,28,29,30,31,32]. Fresh bacterial cultures were prepared from glycerol stocks to challenge mosquitoes. Bacterial isolates were inoculated on LB agar at 37°C for 24 hours, colonies were collected and washed twice in PBS by centrifugation. Optical density (OD) measurements at 600 nm were used to determine bacterial concentration in the culture, with $\text{OD}_{600} = 1$ representing 10^9 Colony Forming Units (CFUs)/ml.

Midgut colonization assays

The *Escherichia coli* isolate JQ680851 was chosen to measure the success of bacterial colonization in mosquito midguts. Two bacterial suspensions, at concentrations of 10^9 and 10^7 bacteria/ml were provided on sterile cotton balls to female mosquitoes and the concentration of bacteria in the midgut were determined at different time points post-challenge (at 4, 8, 24, 48, 72 hours). Each female mosquito was surface-sterilized as described above, and the midgut dissected and homogenized in 0.1 ml sterile PBS. The concentration of bacteria was estimated by plating several serial dilutions on ChromID CPS agar plates. After 24 hours incubation in aerobic conditions at 37°C , CFUs per midgut were determined using the equation: (number of colonies count) \times (dilution factor)/plated volume (0.1 ml), and expressed as CFUs/ml. Three replicates were performed at different time points for each optical density.

Experimental infections with natural *P. falciparum* isolates after bacterial challenge

Batches of 2-days-old Ngousso females (80–100 mosquitoes/batch) were fed on cotton balls soaked either with PBS or bacterial cultures (10^9 bacteria/ml) in 3% sucrose and kept in insectary for 36 hours. Mosquitoes were starved for 18 hours before blood feeding. Bacteria-challenged and PBS-control mosquitoes were fed on gametocyte-containing blood from the same donor to avoid variability in the infection outcomes due to the blood donor [33]. Membrane feedings were performed as previously described, using the AB replacement procedure [11,34]. Females were allowed to feed for 35 minutes, unfed and partially fed mosquitoes were removed by aspiration and discarded. Engorged females were maintained in the insectary for 8 days, midguts were then dissected, stained with a 0.4% mercurochrome solution and the oocysts enumerated using a light microscope ($20\times$ magnification). Infection prevalence was defined as the proportion of mosquitoes harboring at least one oocyst among the total dissected mosquitoes and mean oocyst intensity as the mean number of oocysts per midgut among all dissected mosquitoes.

Statistical analysis

Statistical analyses were performed using the R statistical software, version 2.15.0 [35]. Hierarchical cluster dendrograms based on Bray-Curtis similarity analysis were performed using the Vegan packages [36]. The bubble plot was constructed using ggplot2 [37] and graphicsQC [38].

We measured the treatment effect on *P. falciparum* infection prevalence and intensity over multiple infectious feedings using generalised linear mixed models (GLMMs). In both the prevalence and intensity models the difference between the PBS control and bacterial challenge was included as a fixed effect whilst overall transmission was allowed to vary at random between hosts. The analysis was repeated for each blood donor separately to see how parasite exposure (as measured by oocyst intensity in the control group) influenced bacterial efficacy. The significance threshold was set at 0.05. A binomial error structure was used to describe changes in oocyst prevalence and a zero inflated negative binomial (ZINB) distribution was used to assess intensity data to accommodate for the over-dispersion in the oocyst counts [39]. Models were fit using the glmmADMB package in R [40].

Results

16S rRNA gene sequences

Culturable bacterial isolates were recovered from 227 individual midguts of mosquitoes collected in four localities and 14 water samples from larval habitats (Table S1). A total of 597 bacterial colonies were isolated from the MacConkey agar plates and 562 (94%) were successfully sub-cultured into LB agar. After sequencing analysis, 464 (84%) high quality sequences of the 16S rRNA gene were obtained, 437 were from midgut samples and 27 from aquatic breeding sites.

The 16S rRNA gene sequences of the bacteria isolated from the mosquito midgut were aligned with published sequences of bacterial strains described in other insect vectors. Sequences from our samples showed high homology to those identified in other insects of medical importance collected in different geographical locations, *An. arabiensis* from Zambia, *An. gambiae* from Kenya, *An. maculipennis* from Iran, *Culex quinquefasciatus* from India, or *Glossina* spp. from Cameroon [13,14,23,29,31,41] (Table 1). Interestingly, bacterial strains from certain genera, *Acinetobacter*, *Enterobacter*, showed higher relatedness to strains isolated in *Glossina* spp. from Cameroon [28,29] than to bacteria strains recovered in other anopheline mosquitoes from more distant areas. For example, the bacterial strain JQ680728 has the best match (99% identity) with *Enterobacter* spp. 11B (HQ289881) from the midgut of *Glossina* spp. collected in Cameroon [29] (Table 1). For other genera, such as *Bacillus*, *Serratia*, and *Pseudomonas*, the 16S rRNA sequences from our isolates showed higher relatedness with sequences of bacteria isolated from *Anopheles* mosquitoes. The *Bacillus* JQ680964 strain has the best match (99% identity) with the JF690927 strain isolated from the midgut of wild-caught *An. arabiensis* from Zambia [14]. The *Serratia marcescens* JQ680856 strain isolated in this study from the midgut of an *An. gambiae* adult female showed 100% similarity with the *Serratia* strain JQ410823, which was isolated from the midgut of *Rhodnius* [42] and 99% similarity with the *Serratia* strain FJ608300, which was isolated from a field-caught *An. stephensi* female from India [32]. The *Pseudomonas* strain JQ680959 that was isolated from pupal midgut was 98% identical to *Pseudomonas mendocina* strain Lma2 isolated from the larvae of *An. maculipennis* from Iran [41]. These results indicate that some bacterial species are closely associated with the insect midguts and the bacteria/insect association may rely either on geographical or taxonomic factors.

Genetic diversity of *An. gambiae*-associated bacteria in Cameroon

The bacterial population of the *An. gambiae* midgut was comprised of members of a single Phylum, Proteobacteria, and specifically the two main classes of *Gamma*proteobacteria (98%) and

Table 1. Taxonomic affiliation and abundance of bacterial isolates from midguts of field collected *An. gambiae* or breeding sites.

Phylum	Class	Family	Assigned genus/species ^a	Genbank ^b	Best match ^c	Max id.	Origin of bacterial isolates ^d				
							Male	Female	Pupa	Larva	Habitat
Proteobacteria	β -proteobacteria	Comamonadaceae	<i>Delftia</i> sp.	JQ680815	JF833617.1	100	2	2	0	3	0
		Comamonadaceae	<i>Comamonas</i> sp.	JQ680958	JF690938.1	96	0	0	1	0	0
	γ -proteobacteria	Moraxellaceae	<i>Acinetobacter</i> sp.	JQ680951	HQ289878.1	99	0	0	3	0	5
			<i>Acinetobacter septicus</i>	JQ680956	EF611418.1	99	0	0	1	0	0
		Aeromonadaceae	<i>Aeromonas</i> sp.	JQ680955	DQ815211.1	100	2	0	2	2	2
			<i>Aeromonas hydrophila</i>	JQ680525	GU204971.1	100	0	0	2	14	5
			<i>Aeromonas veronii</i>	JQ680933	X74684.1	99	0	0	0	1	3
			<i>Aeromonas caviae</i>	JQ680937	HQ407268.1	99	0	0	0	3	2
		Pseudomonadaceae	<i>Pseudomonas stutzeri</i>	JQ680717	JF431416.1	100	1	2	2	11	0
			<i>Pseudomonas stutzeri</i>	JQ680474	AY837753.1	100	1	0	7	31	0
			<i>Pseudomonas mendocina</i>	JQ680959	GU204966.1	98	0	0	1	0	0
			<i>Enterobacteriaceae</i>	<i>Enterobacter cloacae</i> subsp.	JQ680938	EU260136.1	99	0	0	0	1
			<i>Enterobacter</i> sp.	JQ680728	HQ289881.1	99	1	0	0	1	0
			<i>Klebsiella</i> sp.	JQ680797	GQ418030.1	100	2	0	0	0	5
			<i>Klebsiella</i> sp.	JQ680795	JF690978.1	94	1	0	0	0	0
			<i>Salmonella</i> sp.	JQ680526	EU881982.1	99	0	0	0	0	1
			<i>Escherichia coli</i>	JQ680723	JF813185.1	99	2	3	8	15	0
			<i>Escherichia-Shigella</i>	JQ680483	GQ867428.1	99	9	6	10	22	0
			<i>Escherichia-Shigella</i>	JQ680477	GQ898121.1	99	4	3	14	43	0
			<i>Escherichia-Shigella</i>	JQ680851	X80725.1	99	12	13	24	52	3
			<i>Shigella flexneri</i>	JQ680484	AB273731.1	99	11	5	7	21	0
			<i>Rahnella aquatilis</i>	JQ680494	GU204974.1	99	0	0	0	2	0
			<i>Serratia marcescens</i>	JQ680856	JQ410823.1	100	12	11	13	7	0
			<i>Serratia marcescens</i>	JQ680863	FJ608300.1	99	2	6	0	0	0
			<i>Serratia</i> sp.	JQ680855	JN201947.1	98	0	1	0	0	0

^aAffiliation based on the best BLASTn hit. Sequence analyses are based on ~1.4 kb of the 16S rRNA genes from 464 isolates.

^bWhen multiple 16S rRNA sequences were identical, one was taken as reference sequence.

^cGenebank accession number of the best BLASTn hit.

^dNumber of bacterial isolates from each mosquito stage/gender, habitat is for isolates recovered from the aquatic breeding sites.

doi:10.1371/journal.pone.0081663.t001

Betaproteobacteria (~2%). The dominant family identified was the *Enterobacteriaceae* (78%), followed by *Pseudomonadaceae* (12%), *Aeromonadaceae* (6%), *Comamonadaceae* (2%), and *Moraxellaceae* (1%). The current classification of *Escherichia* and *Shigella* genera is based on seven housekeeping genes [43], and we assigned the bacteria to a single group, *Escherichia/Shigella*, when no consensus reference sequence was found upon BLASTn search against the 16 S rRNA sequence database. The main bacterial genera, representing >1% of the sequences, were unevenly distributed among the different mosquito stages or among localities. *Escherichia/Shigella*, *Serratia*, *Pseudomonas* and *Aeromonas* were over represented. *Escherichia/Shigella*, *Pseudomonas* and *Aeromonas* were particularly abundant in larvae midguts as compared to later stages (Figure 1). Differences in the abundance of bacterial genera identified in the midguts of mosquitoes from the four localities were also observed (Figure 2), with *Serratia* spp. highly represented in mosquitoes from Nkolkomou. Some genera were identified in a single locality: *Enterobacter* and *Klebsiella* in Mvan or *Acinetobacter* and *Rahnella* in Nkolbisson.

In mosquito aquatic habitats, the bacteria were from a single class, *Gammaproteobacteria*, and belonged to 3 families: *Aeromonadaceae* (44.44%), *Enterobacteriaceae* (37.03%) and *Moraxellaceae* (18.52%) (data not shown). *Aeromonas* were identified in all 4 localities,

whereas *Enterobacter* was only found in Mvan, and *Acinetobacter* only in Nkolondom.

Gut colonization

In vivo replication of *Escherichia coli* (strain JQ680851) was assessed after mosquito challenge at different times after exposure. Final *E. coli* concentrations were determined by counting CFUs after plating serial dilutions of midgut homogenates on chromID CPS agar plates. The *E. coli* strain was able to efficiently colonize the mosquito midguts (Figure S1). Bacterial concentrations of *E. coli* decreased for the first 4 hours post-challenge and growth appeared thereafter. *In vivo* replication reached a plateau around 48 hours for the two initial concentrations, indicating a stability of the replication. The number of bacteria per midgut varies between individual mosquitoes, ranging between 10^4 – 10^5 (Dong et al. 2009, Boissiere et al. 2012). Here, the ability of the bacteria to persist in the midgut over time allowed us to test the effect of natural bacterial isolates on *P. falciparum* transmission after colonization of the midgut by bacteria introduced through sugar feeding.

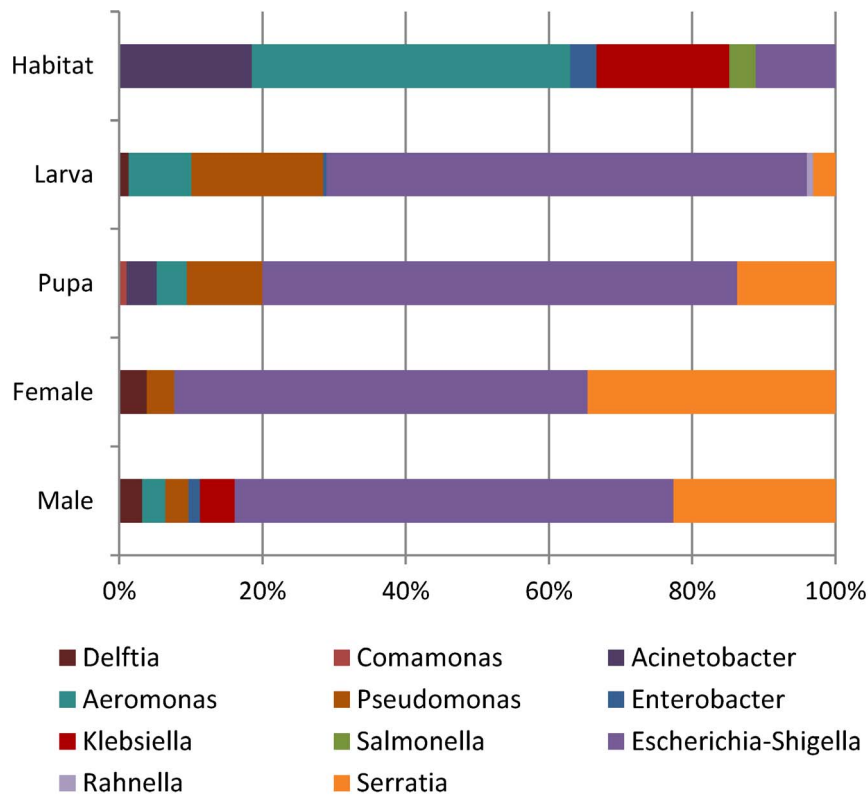


Figure 1. Relative abundance of the bacterial genera within mosquito midguts at each mosquito stage, gender, or within the immature aquatic habitats.

doi:10.1371/journal.pone.0081663.g001

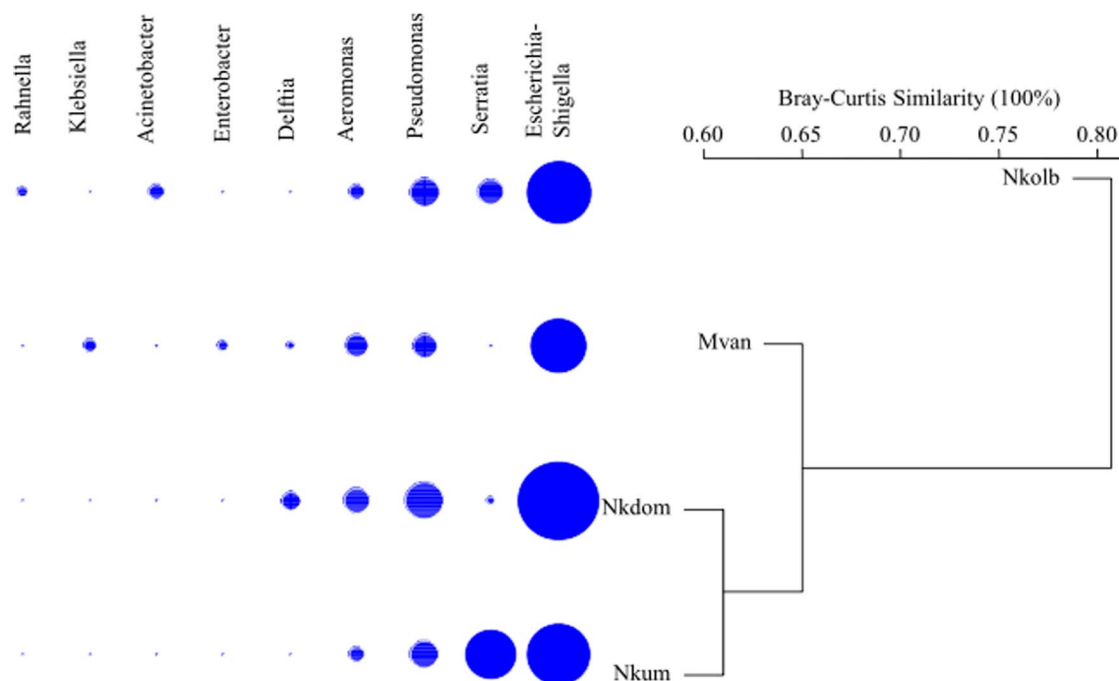


Figure 2. Taxonomic hierarchical classification of the major bacterial groups for each locality. Bray Curtis similarities were calculated for genera abundance and the dendrogram was constructed using the "complete" method. The bubble plot schematically represents major genera abundances (>1%). Nkolb (Nkolbisson), Mvan, Nkdom (Nkolondon), and Nkum (Nkolokumu) indicate the locality where the mosquitoes came from.

Effect of bacterial challenge on *P. falciparum* development

The infectiousness of gametocytes depends on multiple parameters such as multiplicity of infection, parasite sex-ratio, parasite density or human factors [34,44]. We performed multiple replicates assays using different naturally infected gametocyte carriers, to provide an accurate measure of the effect of bacteria on parasite infectivity to mosquitoes. We assayed 7 different midgut bacterial isolates: *Escherichia coli* (JQ680851), *Serratia marcescens* (JQ680856), *Pseudomonas stutzeri* (JQ680796), *Enterobacter* spp. (JQ680715), *Acinetobacter septicus* (JQ680956), *Comamonas* spp. (JQ680958) and *Bacillus pumilus* (JQ680964). *Bacillus pumilus* was isolated from a pupa by plating the midgut on a chromID CPS medium (BioMérieux) in a previous experiment.

The effect of bacterial challenge was calculated by comparing oocyst intensity and prevalence in comparison with the PBS control group. Results of the infection prevalence and intensity between bacteria-challenged and control mosquitoes are presented in Tables S2 and S3. Heterogeneity between gametocyte carriers was detected and the combined estimates over all replicates were computed using a mixed-effects model. The effect of exposure to bacteria was significant on both prevalence and intensity of infection for all but one bacterial species. The exposure to *Acinetobacter septicus* did not affect mosquito infection prevalence and only marginally affected oocyst intensity ($P = 0.011$; Table S4). The impact of the bacterial challenge differed between the different bacterial isolates and the impact was more pronounced for *Escherichia coli*, *Serratia marcescens* and *Pseudomonas stutzeri* (Tables S2 and S4, Figure 3A). When efficacy was measured as changes in oocyst intensity, the bacterial challenge had no effect irrespective of the oocyst intensity in the control group (Figure 3B). However, the reduction in oocyst prevalence due to the bacterial exposure was lower when parasite exposure was higher – in feedings that gave rise to the highest oocyst intensities in the PBS control, the bacterial challenge had almost no effect (Figure 3C). The observed difference in parasite inhibition could also be due to different efficiencies in midgut colonization by various bacteria from one feeding to another. However, we used the same mosquito colony and concentrations of bacterial cultures were checked prior each feeding, which renders this possibility unlikely.

Discussion

Malaria transmission from human host to mosquito vector is complex in natural endemic areas, relying on multiple factors from the mosquito vector, the parasite and the human host [44,45]. Genetic factors that affect parasite development within the mosquito have been identified [46,47] but other parameters such as the gametocyte density, the genetic complexity of the parasite isolate or the presence of transmission-reducing antibodies are known to influence the success of the infection [34,44,48]. More recently, the role of environmental factors in parasite transmission has gained in interest and, in particular, several studies examined whether the midgut microbiota could modulate *Plasmodium* development in the *Anopheles* mosquito [5,11,14]. By using pyrosequencing technology, we have recently described the large diversity of the bacterial communities in the mosquito midgut and we showed from field mosquitoes that the abundance of *Enterobacteriaceae* was higher in *P. falciparum*-infected mosquitoes, indicating that parasites may interact with the resident microbiota [11]. Here, we used culture-dependant methods to characterize the bacterial flora in the midgut of wild mosquitoes and within their breeding sites. We used a selective culture medium, the MacConkey medium, which permits the specific isolation of

enteric bacteria. We further investigated the effect of a selected set of midgut bacteria strains on *Plasmodium* transmission by infecting bacteria-challenged mosquitoes with natural isolates of *P. falciparum*.

Microbiota composition is linked to diet and in accordance bacterial communities between males and females were somewhat different. Adult mosquitoes feed on nectar and plant saps and only females require a bloodmeal for egg maturation. The midgut epithelium is covered by a mucus layer that houses the microbiota and previous studies have revealed the important role of commensal bacteria in the vector physiology and immunity [5,49]. Midgut bacteria play a role in digestive processes for sugar or blood meals [49,50], and further studies will have to dissect the bacterial flora of wild-caught adult mosquitoes to identify those bacteria that can be acquired from plants in nature. Surprisingly, *Enterobacter* and *Kliebsella* were not identified in female mosquitoes in our study but have already been described as female midgut microbiota-residents [14,15,17,51,52]. Our findings could indicate that competition between bacterial communities influences the bacterial growth of each species and that the midgut content depends on interactions among species. For feeding, larvae exploit the surface microlayer, a bacteria-rich environment and at molting the midgut epithelium is renewed [53]. Many commensal bacteria from soil environment are then lost during metamorphosis from pupae to adult stages [52]. However, our study and those of others [11,13–15,17,18,31,32,41,51,52,54,55] suggest that the midgut microbiota in immature and adult stages of mosquitoes is diverse and that the gut may not be completely sterilized following adult emergence. In addition, the difference in midgut bacterial composition between field-collected mosquitoes originating from distinct breeding sites indicates that most bacteria are acquired from the environment. Homology searches revealed that the bacteria isolated in the mosquito midgut are more related to strains described in *Glossina* from Cameroon than to others recovered from *Anopheles* mosquitoes from East and West Africa, and this suggests that bacteria can colonize different insect groups within a sympatric geographic area. In contrast to another study that reported a high bacteria diversity in larval habitats using non-culturing methods [52], we found a relative low number of bacteria species in our samples from the mosquito breeding sites and this is likely due to the culture medium used in our study. Deeper investigations of the aquatic habitats are required to determine the mode of acquisition of the mosquito midgut bacteria as different vertical transmission routes have been described in other insects [56,57].

The resident midgut microbiota play a role in gut homeostasis and changes to the microbial composition can result in damage to the midgut epithelium [8]. In the *Anopheles* vector, bacterial clearance by the use of antibiotics enhances the mosquito susceptibility to *Plasmodium* infection [5,19]. Interactions between the vector host, the parasite and the microbiota as well as within the microbiota community are not yet understood. The oral infection of mosquitoes with members of the *Enterobacteriaceae* family can render mosquitoes refractory to concomitant *Plasmodium* infection [13–15,17]. In this study, we orally exposed female mosquitoes to bacteria isolated from wild mosquito midguts and the mosquitoes were fed on gametocyte-containing blood from naturally infected human donors 2 days later, when the bacteria had stably colonized the midgut. The exposure to *E. coli*, *Serratia marcescens* and *Pseudomonas stutzeri* strikingly reduced the prevalence and intensity of *P. falciparum* infection. Interestingly, the impact of the bacterial exposure on oocyst prevalence was lower when parasite exposure was higher. We used multiple parasite donors to infect mosquitoes and the different efficiency of bacteria at

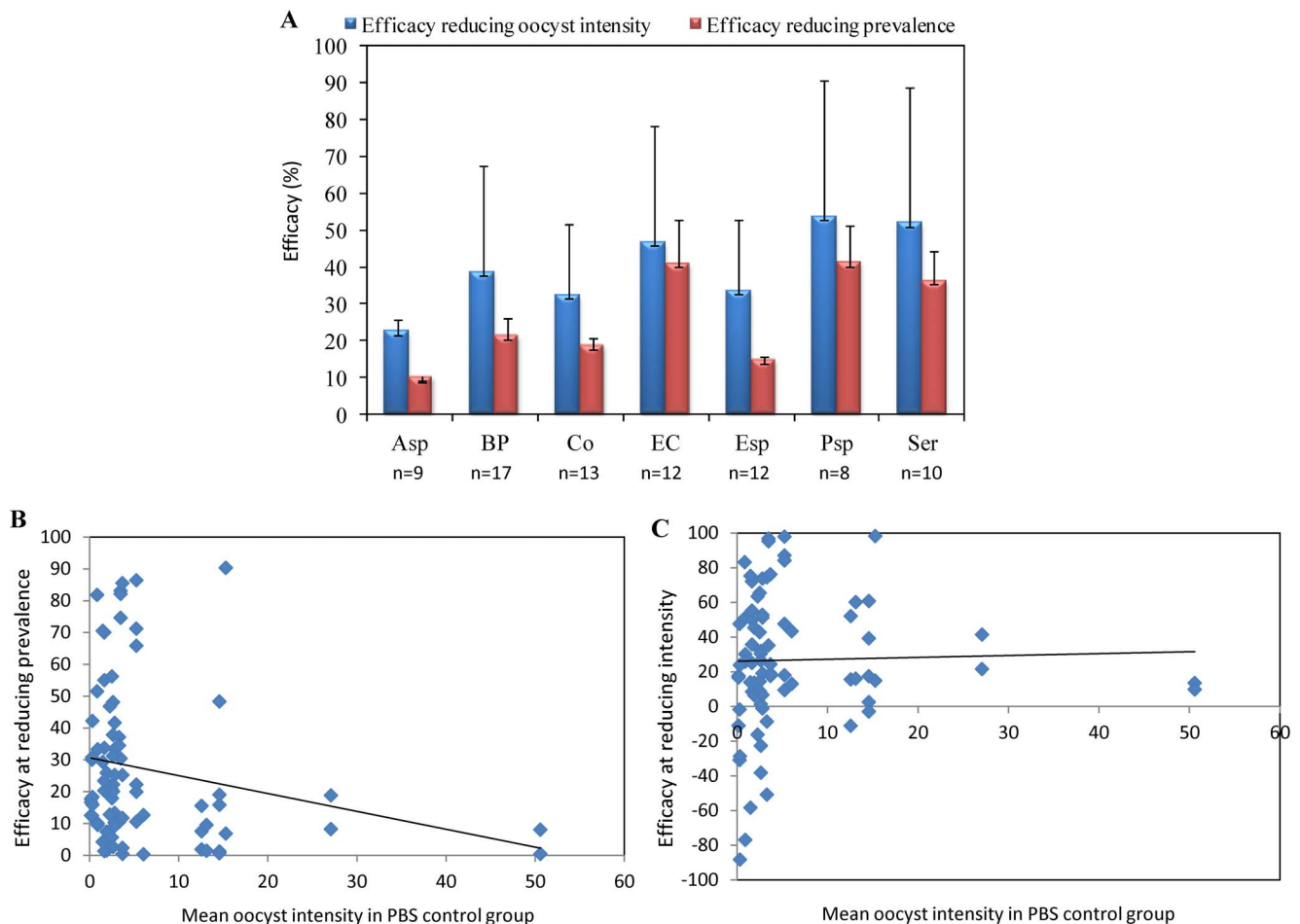


Figure 3. Range of efficacies at reducing oocyst prevalence and intensity. **A** represents the effect of bacterial exposure in the midgut on oocyst intensity and infection prevalence, relative to a PBS control group. The impact of bacterial challenge is shown upon exposure to Asp, *Acinetobacter septicus*; BP, *Bacillus pumilus*; Co, *Comamonas* spp.; EC, *Escherichia coli*; Esp, *Enterobacter* spp.; Psp, *Pseudomonas stutzeri*; Ser, *Serratia marcescens*. The number of donors (n) for each treatment is given below the bacterial species. **B** and **C** indicate the correlation between the relative infection prevalence (B) and oocyst intensity (C) and the number of oocysts over all feedings. Each dot indicates the efficacy of a bacteria for a single gametocyte donor.

doi:10.1371/journal.pone.0081663.g003

reducing parasite loads probably results from differences in gametocyte numbers at the time of infection. In a recent report, different strains of *S. marcescens* exhibited variable levels of resistance to *P. berghei* infections [13]. In this study, we provided evidence that the effect of bacterial exposure on *P. falciparum* infection also depends on other factors. The *P. falciparum* isolate-dependent response of the infection could be due to human factors contained in the blood or to different parameters influencing the infectiousness of the gametocytes. Indeed the efficacy of candidate transmission-blocking antibodies decreases with higher parasite intensities and infection intensity varies with the genetic diversity of parasite isolates [34,39]. Further studies will need to decipher how these different parameters impact *P. falciparum* transmission, and particularly under transmission-blocking antibody pressure, as this would help to predict the effectiveness of control interventions. In this study, we measured the impact of natural midgut bacteria on *P. falciparum* infection for 7 bacterial isolates which represents only a fraction of the bacterial species colonizing the mosquito midgut in the field. We noted that *per os* infection of adult mosquitoes with bacteria probably led to the disruption of gut homeostasis, which, in turn resulted in the failure to control the

bacterial bloom and the rapid activation of the innate antimicrobial immune responses in the gut. This limitation points to the importance of considering the natural microbiota and its dynamics when studying microbe-parasite interactions. Malaria transmission in the field involves on an intricate interplay between mosquito, human factors and parasite genotypes, the midgut microbiota and the mosquito innate system. Deciphering the interactions among the different partners and environmental factors in natural conditions will help us develop novel control strategies aimed at blocking *Plasmodium* development within the mosquito vector.

Supporting Information

Figure S1 *In vivo* replication of *Escherichia coli* in the midgut of *An. gambiae* females. Females, 2-days old, were challenged with bacterial cultures and guts dissected over a period of 72-hours to assess the efficiency of bacterial colonization. Two concentrations of *E. coli* were assayed, 10^9 and 10^7 bacteria/ml. Final *E. coli* concentrations were determined by plating serial dilutions of midgut homogenates on chromID CPS agar plates and colony-forming units (CFU) were calculated as described in

Materials and Methods. Each point represents the mean \pm standard deviation of three replicates. (TIF)

Table S1 Total number of mosquitoes sampled in each locality at different stages. (XLS)

Table S2 Mosquito infections in PBS control and bacterial challenged mosquitoes for each gametocyte donor. (XLS)

Table S3 Mosquito infections in PBS control and bacterial challenged mosquitoes for each gametocyte donor. (suite). (XLS)

Table S4 Efficacy of bacterial isolates at reducing *Plasmodium falciparum* infection intensity and prevalence. (XLS)

References

- Murray CJ, Rosenfeld LC, Lim SS, Andrews KG, Foreman KJ, et al. (2012) Global malaria mortality between 1980 and 2010: a systematic analysis. *Lancet* 379: 413–431.
- Ghosh A, Edwards MJ, Jacobs-Lorena M (2000) The journey of the malaria parasite in the mosquito: hopes for the new century. *Parasitol Today* 16: 196–201.
- Sinden RE, Dawes EJ, Alavi Y, Waldock J, Finney O, et al. (2007) Progression of *Plasmodium berghei* through *Anopheles stephensi* is density-dependent. *PLoS Pathog* 3: e195.
- Angrisano F, Tan YH, Sturm A, McFadden GI, Baum J (2012) Malaria parasite colonisation of the mosquito midgut—placing the *Plasmodium* ookinete centre stage. *Int J Parasitol* 42: 519–527.
- Dong Y, Manfredini F, Dimopoulos G (2009) Implication of the mosquito midgut microbiota in the defense against malaria parasites. *PLoS Pathog* 5: e1000423.
- Fraiture M, Baxter RH, Steinert S, Chelliah Y, Frolet C, et al. (2009) Two mosquito LRR proteins function as complement control factors in the TEPI-mediated killing of *Plasmodium*. *Cell Host Microbe* 5: 273–284.
- Harris C, Lambrechts L, Rousset F, Abate L, Nsango SE, et al. (2010) Polymorphisms in *Anopheles gambiae* immune genes associated with natural resistance to *Plasmodium falciparum*. *PLoS Pathog* 6: e1001112.
- Kumar S, Molina-Cruz A, Gupta L, Rodrigues J, Barillas-Mury C (2010) A peroxidase/dual oxidase system modulates midgut epithelial immunity in *Anopheles gambiae*. *Science* 327: 1644–1648.
- Mendes AM, Awono-Ambene PH, Nsango SE, Cohuet A, Fontenille D, et al. (2011) Infection intensity-dependent responses of *Anopheles gambiae* to the African malaria parasite *Plasmodium falciparum*. *Infect Immun* 79: 4708–4715.
- Boissiere A, Gimonneau G, Tchioffo MT, Abate L, Bayibeki A, et al. (2013) Application of a qPCR assay in the investigation of susceptibility to malaria infection of the M and S molecular forms of *An. gambiae* s.s. in Cameroon. *PLoS One* 8: e54820.
- Boissiere A, Tchioffo MT, Bachar D, Abate L, Marie A, et al. (2012) Midgut Microbiota of the Malaria Mosquito Vector *Anopheles gambiae* and Interactions with *Plasmodium falciparum* Infection. *PLoS Pathog* 8: e1002742.
- Kamdem C, Tene Fosso B, Simard F, Etouana J, Ndo C, et al. (2012) Anthropogenic habitat disturbance and ecological divergence between incipient species of the malaria mosquito *Anopheles gambiae*. *PLoS One* 7: e39453.
- Bando H, Okado K, Guelbeogo WM, Badolo A, Aonuma H, et al. (2013) Intra-specific diversity of *Serratia marcescens* in *Anopheles* mosquito midgut defines *Plasmodium* transmission capacity. *Sci Rep* 3: 1641.
- Cirimotich CM, Dong Y, Clayton AM, Sandiford SL, Souza-Neto JA, et al. (2011) Natural microbe-mediated refractoriness to *Plasmodium* infection in *Anopheles gambiae*. *Science* 332: 855–858.
- Gonzalez-Ceron L, Santillan F, Rodriguez MH, Mendez D, Hernandez-Avila JE (2003) Bacteria in midguts of field-collected *Anopheles albimanus* block *Plasmodium vivax* sporogonic development. *J Med Entomol* 40: 371–374.
- Pumpuni CB, Beier MS, Nataro JP, Guers LD, Davis JR (1993) *Plasmodium falciparum*: inhibition of sporogonic development in *Anopheles stephensi* by gram-negative bacteria. *Exp Parasitol* 77: 195–199.
- Pumpuni CB, Demao J, Kent M, Davis JR, Beier JC (1996) Bacterial population dynamics in three anopheline species: the impact on *Plasmodium* sporogonic development. *Am J Trop Med Hyg* 54: 214–218.
- Straif SC, Mbogo CN, Toure AM, Walker ED, Kaufman M, et al. (1998) Midgut bacteria in *Anopheles gambiae* and *An. funestus* (Diptera: Culicidae) from Kenya and Mali. *J Med Entomol* 35: 222–226.
- Beier MS, Pumpuni CB, Beier JC, Davis JR (1994) Effects of para-aminobenzoic acid, insulin, and gentamicin on *Plasmodium falciparum* development in anopheline mosquitoes (Diptera: Culicidae). *J Med Entomol* 31: 561–565.
- Lowenberger CA, Kamal S, Chiles J, Paskewitz S, Bulet P, et al. (1999) Mosquito-*Plasmodium* interactions in response to immune activation of the vector. *Exp Parasitol* 91: 59–69.
- Meister S, Agianian B, Turlure F, Relogio A, Morlais I, et al. (2009) *Anopheles gambiae* PGRPLC-mediated defense against bacteria modulates infections with malaria parasites. *PLoS Pathog* 5: e1000542.
- Rodrigues J, Brayner FA, Alves LC, Dixit R, Barillas-Mury C (2010) Hemocyte differentiation mediates innate immune memory in *Anopheles gambiae* mosquitoes. *Science* 329: 1353–1355.
- Pidiyar VJ, Jangid K, Patole MS, Shouche YS (2004) Studies on cultured and uncultured microbiota of wild culex quinquefasciatus mosquito midgut based on 16s ribosomal RNA gene analysis. *Am J Trop Med Hyg* 70: 597–603.
- Godon JJ, Zumstein E, Dabert P, Habouzit F, Moletta R (1997) Molecular microbial diversity of an anaerobic digester as determined by small-subunit rDNA sequence analysis. *Appl Environ Microbiol* 63: 2802–2813.
- Robert V, Tchuinkam T, Carnevale P (1993) Successful eradication of a microsporidian, *Nosema* sp., in a mosquito colony. *Ann Soc Belg Med Trop* 73: 71–72.
- Kampfer P, Matthews H, Glaeser SP, Martin K, Lodders N, et al. (2011) *Elizabethkingia anophelis* sp. nov., isolated from the midgut of the mosquito *Anopheles gambiae*. *Int J Syst Evol Microbiol* 61: 2670–2675.
- Geiger A, Fardeau ML, Falsen E, Ollivier B, Cuny G (2009) *Serratia glossinae* sp. nov., isolated from the midgut of the tsetse fly *Glossina palpalis gambiensi*. *Int J Syst Evol Microbiol* 60: 1261–1265.
- Geiger A, Fardeau ML, Grebaut P, Vatunga G, Josenando T, et al. (2009) First isolation of *Enterobacter*, *Enterococcus*, and *Acinetobacter* spp. as inhabitants of the tsetse fly (*Glossina palpalis palpalis*) midgut. *Infect Genet Evol* 9: 1364–1370.
- Geiger A, Fardeau ML, Njiokou F, Joseph M, Asonganyi T, et al. (2011) Bacterial diversity associated with populations of *Glossina* spp. from Cameroon and distribution within the Campo sleeping sickness focus. *Microb Ecol* 62: 632–643.
- Lindh JM, Lehane MJ (2011) The tsetse fly *Glossina fuscipes fuscipes* (Diptera: Glossina) harbours a surprising diversity of bacteria other than symbionts. *Antonie Van Leeuwenhoek* 99: 711–720.
- Lindh JM, Terenius O, Faye I (2005) 16S rRNA gene-based identification of midgut bacteria from field-caught *Anopheles gambiae sensu lato* and *A. funestus* mosquitoes reveals new species related to known insect symbionts. *Appl Environ Microbiol* 71: 7217–7223.
- Rani A, Sharma A, Rajagopal R, Adak T, Bhatnagar RK (2009) Bacterial diversity analysis of larvae and adult midgut microflora using culture-dependent and culture-independent methods in lab-reared and field-collected *Anopheles stephensi*-an Asian malarial vector. *BMC Microbiol* 9: 96.
- Bousema T, Dinglasan RR, Morlais I, Gouagna LC, van Warmerdam T, et al. (2012) Mosquito feeding assays to determine the infectiousness of naturally infected *Plasmodium falciparum* gametocyte carriers. *PLoS One* 7: e42821.
- Nsango SE, Abate L, Thoma M, Pompon J, Fraiture M, et al. (2012) Genetic clonality of *Plasmodium falciparum* affects the outcome of infection in *Anopheles gambiae*. *Int J Parasitol* 42: 589–595.
- Team RDC (2012) R: A Language and Environment for Statistical Computing. Vienna, Austria: R Foundation for Statistical Computing.
- Oksanen J, Blanchet GF, Kindt R, Legendre P, Minchin PR, et al. (2013) Community Ecology Package. v 2.0.7. Available at <http://vegan.r-forge.r-project.org/>.
- Wickham H (2009) ggplot2: elegant graphics for data analysis. Springer New York Available at <http://hadconz/ggplot2/>.
- Murrell P, Gardiner S (2009) Quality control for statistical graphics: the graphicsQC package for R. *Journal of Statistical Software*. Available at <http://graphicsqc-forger-project.org/> 30: 1–28.

Acknowledgments

We thank Elena Levashina and Didier Fontenille for continuous support and fruitful discussions. We acknowledge Rhoel Dinglasan for critical reading of the manuscript. We are grateful to volunteers from Mfou primary schools and their parents or guardians for participating in this study, to the medical team from the Mfou Hospital for assistance in the field and to the technician staff from the IRD-OCEAC laboratory for mosquito collections and *P. falciparum* infections. Sequence dataset were produced through the technical facilities of the “Centre Méditerranéen Environnement Biodiversité” in Montpellier.

Author Contributions

Conceived and designed the experiments: MTT A. Boissiere IM. Performed the experiments: MTT A. Boissiere LA GG SEN PHAA A. Berry IM. Analyzed the data: MTT TSC LA GG RC IM. Contributed reagents/materials/analysis tools: RC IM. Wrote the paper: MTT IM.

39. Churcher TS, Blagborough AM, Delves M, Ramakrishnan C, Kapulu MC, et al. (2012) Measuring the blockade of malaria transmission—an analysis of the Standard Membrane Feeding Assay. *Int J Parasitol* 42: 1037–1044.
40. Skaug H, Fournier D, Nielsen AN, Magnusson A, Bolker B (2012) glmmADMB: generalized linear mixed models using AD Model Builder. R package version 0.7.2.12.
41. Dinparast Djadid N, Jazayeri H, Raz A, Favia G, Ricci I, et al. (2011) Identification of the midgut microbiota of *An. stephensi* and *An. maculipennis* for their application as a paratransgenic tool against malaria. *PLoS One* 6: e28484.
42. da Mota FF, Marinho LP, Moreira CJ, Lima MM, Mello CB, et al. (2012) Cultivation-independent methods reveal differences among bacterial gut microbiota in triatomine vectors of Chagas disease. *PLoS Negl Trop Dis* 6: e1631.
43. Wirth T, Falush D, Lan R, Colles F, Mensa P, et al. (2006) Sex and virulence in *Escherichia coli*: an evolutionary perspective. *Mol Microbiol* 60: 1136–1151.
44. Bousema T, Churcher TS, Morlais I, Dinglasan RR (2013) Can field-based mosquito feeding assays be used for evaluating transmission-blocking interventions? *Trends Parasitol* 29: 53–59.
45. Johnston GL, Smith DL, Fidock DA (2013) Malaria's Missing Number: Calculating the Human Component of R_0 by a Within-Host Mechanistic Model of *Plasmodium falciparum* Infection and Transmission. *PLoS Comput Biol* 9: e1003025.
46. Blandin SA, Wang-Sattler R, Lamacchia M, Gagneur J, Lycett G, et al. (2009) Dissecting the genetic basis of resistance to malaria parasites in *Anopheles gambiae*. *Science* 326: 147–150.
47. Riehle MM, Markianos K, Niare O, Xu J, Li J, et al. (2006) Natural malaria infection in *Anopheles gambiae* is regulated by a single genomic control region. *Science* 312: 577–579.
48. Boudin C, Diop A, Gaye A, Gadiaga L, Gouagna C, et al. (2005) *Plasmodium falciparum* transmission blocking immunity in three areas with perennial or seasonal endemicity and different levels of transmission. *Am J Trop Med Hyg* 73: 1090–1095.
49. Dillon RJ, Dillon VM (2004) The gut bacteria of insects: nonpathogenic interactions. *Annu Rev Entomol* 49: 71–92.
50. Gaio Ade O, Gusmao DS, Santos AV, Berbert-Molina MA, Pimenta PF, et al. (2011) Contribution of midgut bacteria to blood digestion and egg production in *aedes aegypti* (diptera: culicidae) (L.). *Parasit Vectors* 4: 105.
51. Demaio J, Pumpuni CB, Kent M, Beier JC (1996) The midgut bacterial flora of wild *Aedes triseriatus*, *Culex pipiens*, and *Psorophora columbiae* mosquitoes. *Am J Trop Med Hyg* 54: 219–223.
52. Wang Y, Gilbreath TM, 3rd, Kukutla P, Yan G, Xu J (2011) Dynamic gut microbiome across life history of the malaria mosquito *Anopheles gambiae* in Kenya. *PLoS One* 6: e24767.
53. Moll RM, Romoser WS, Modrzakowski MC, Moncayo AC, Lerdthusnee K (2001) Meconial peritrophic membranes and the fate of midgut bacteria during mosquito (Diptera: Culicidae) metamorphosis. *J Med Entomol* 38: 29–32.
54. Chavshin AR, Oshaghi MA, Vatandoost H, Pourmand MR, Raeisi A, et al. (2011) Identification of bacterial microflora in the midgut of the larvae and adult of wild caught *Anopheles stephensi*: a step toward finding suitable paratransgenesis candidates. *Acta Trop* 121: 129–134.
55. Valiente Moro C, Tran FH, Nantenaina Raharimalala F, Ravelonandro P, Mavingui P (2013) Diversity of culturable bacteria including *Pantoea* in wild mosquito *Aedes albopictus*. *BMC Microbiol* 13: 70.
56. Hosokawa T, Kikuchi Y, Fukatsu T (2007) How many symbionts are provided by mothers, acquired by offspring, and needed for successful vertical transmission in an obligate insect-bacterium mutualism? *Mol Ecol* 16: 5316–5325.
57. Kikuchi Y, Hosokawa T, Fukatsu T (2007) Insect-microbe mutualism without vertical transmission: a stinkbug acquires a beneficial gut symbiont from the environment every generation. *Appl Environ Microbiol* 73: 4308–4316.