

**Impact of sugar syrup and pollen diet on the bacterial diversity in the gut of
indoor-reared bumblebees (*Bombus terrestris*)**

Annelies Billiet, Ivan Meeus, Filip Van Nieuwerburgh, Dieter Deforce, Felix Wäckers, Guy Smagghe*

*Corresponding author:

Prof. Guy Smagghe

Laboratory of Agrozoology, Department of Crop Protection, Faculty of Bioscience Engineering,
Ghent University, Coupure Links 653, B-9000 Ghent, Belgium

Email: Guy.Smagghe@ugent.be

Fig. S1 Phylogenetic tree derived from the V4 region of the 16S rRNA gene sequence of *Bifidobacteriaceae* occurring in the digestive tract of *Bombus*, showing the position of the *Bifidobacteria* (OTU005 and OTU006) found in our study.

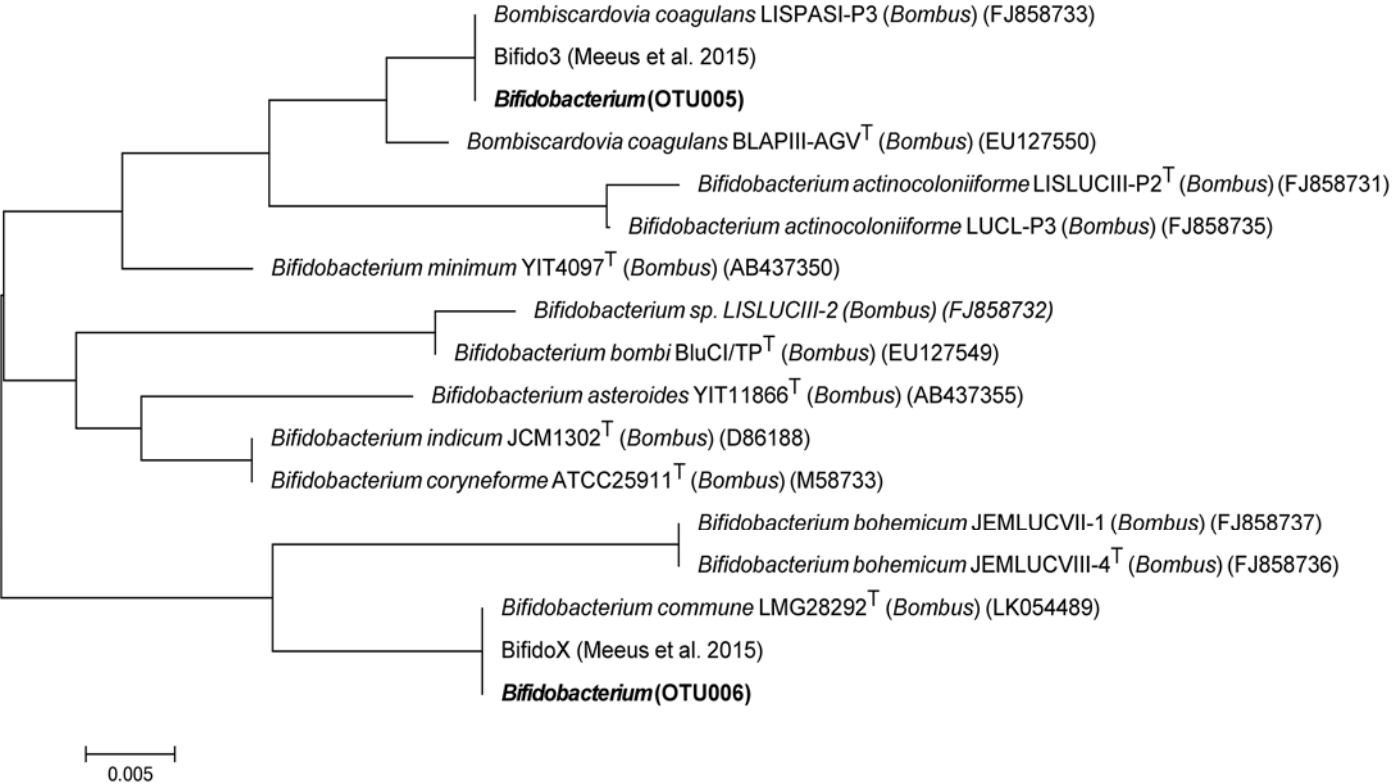


Fig. S2 Phylogenetic tree derived from the V4 region of the 16S rRNA gene sequence of *Lactobacillaceae* and *Bacillaceae* occurring in the digestive tract of *Bombus* and *Apis*, showing the position of the *Lactobacilli* (OTU003 and OTU004) and *Bacillaceae* (OTU009) found in our study.

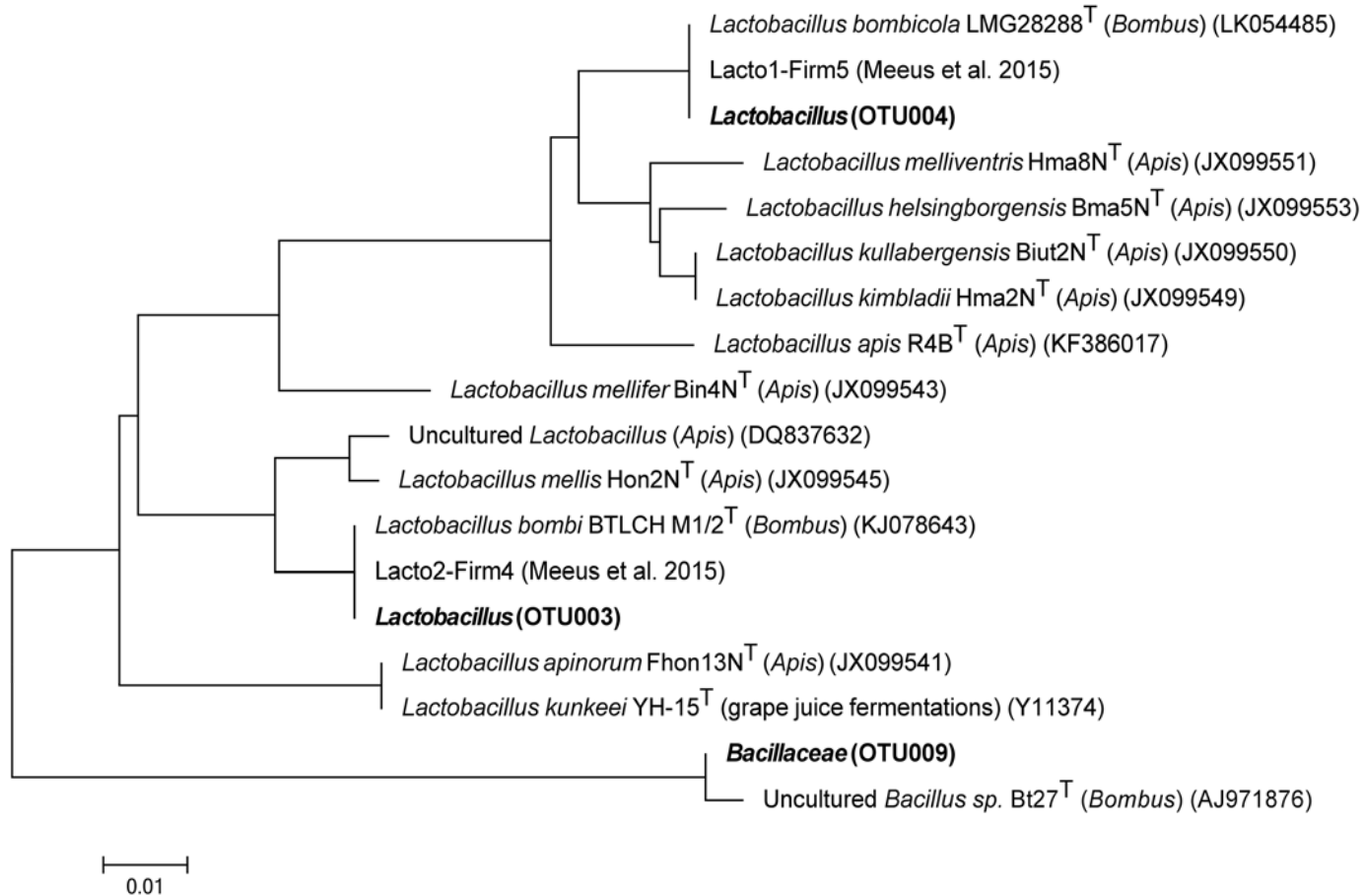


Table S1 Taxonomic identification of OTUs in reared bumblebees and their closest match in GenBank and EzBioCloud.

Identification of OTUs Phylum Class <i>Family</i> Genus	Matching basepairs to best match in <i>Bombus</i> or <i>Apis</i>	Name used here
Proteobacteria Betaproteobacteria <i>Neisseriaceae</i> <i>Snodgrassella</i>	253/253 JQ746649 <i>Snodgrassella alvi</i> strain wkB29	<i>Snodgrassella</i>
Proteobacteria Gammaproteobacteria <i>Orbaceae</i> <i>Gilliamella</i>	253/253 JQ936676 <i>Gilliamella apicola</i> strain wkB30	<i>Gilliamella</i>
Firmicutes Bacilli <i>Lactobacillaceae</i> <i>Lactobacillus</i>	253/253 LK054485 <i>Lactobacillus bombicola</i> LMG 28288 ^T 253/253 Lacto1-Firm5 (Meeus et al. 2015)	<i>L. bombicola</i>
Firmicutes Bacilli <i>Lactobacillaceae</i> <i>Lactobacillus</i>	253/253 KJ078643 <i>Lactobacillus bombi</i> BTLCH M 1/2 ^T 253/253 Lacto2-Firm4 (Meeus et al. 2015)	<i>L. bombi</i>
Firmicutes Bacilli <i>Bacillaceae</i>	252/253 AJ971876 Uncultured <i>Bacillus</i> sp. Bt27	<i>Bacillaceae</i>
Actinobacteria Actinobacteria <i>Bifidobacteriaceae</i>	253/253 FJ858733 <i>Bombiscardovia coagulans</i> LISPASI-P3 253/253 Bifido3 (Meeus et al. 2015)	<i>Bombiscardovia coagulans</i> LISPASI-P3
Actinobacteria Actinobacteria <i>Bifidobacteriaceae</i> <i>Bifidobacterium</i>	253/253 LK054489 <i>Bifidobacterium commune</i> LMG 28292 ^T 253/253 BifidoX (Meeus et al. 2015)	<i>B. commune</i>

References:

Meeus, I., Parmentier, L., Billiet, A., Maebe, K., Van Nieuwerburgh, F., Deforce, D., Wäckers, F., Vandamme, P., Smagghe, G. (2015) 16S rRNA amplicon sequencing demonstrates that indoor-reared bumblebees (*Bombus terrestris*) harbor a core subset of bacteria normally associated with the wild host. PLoS One. **10** (4), e0125152