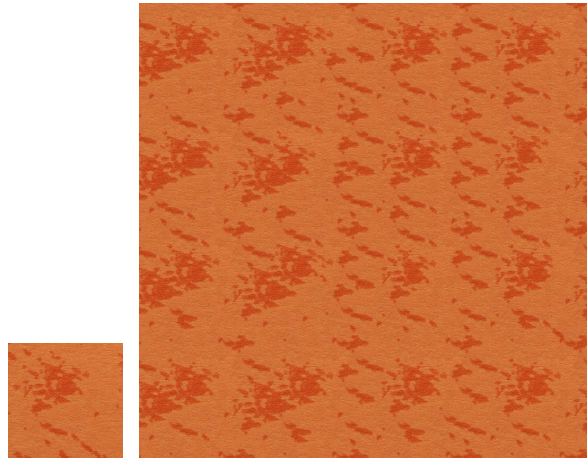


Supplemental material number 2 / 4 for
Bi-Layer textures: a Model for Synthesis and Deformation of Composite
Textures

G. Guingo, B. Sauvage, J.-M. Dischler & M.-P. Cani

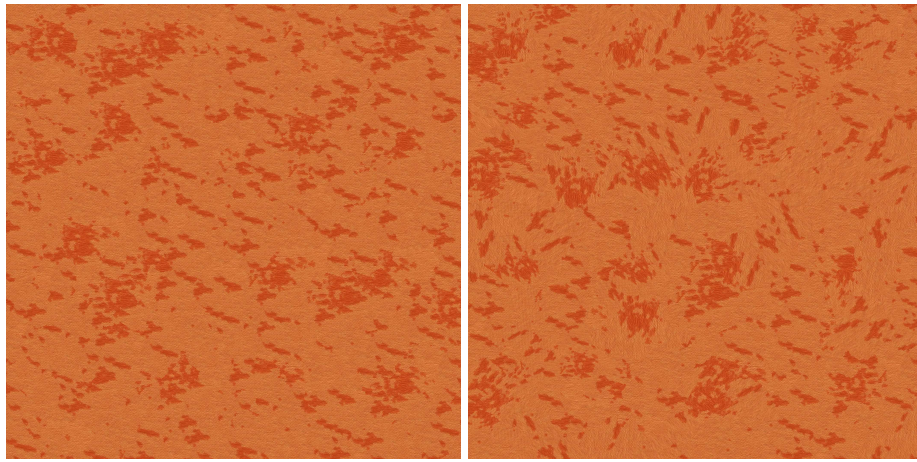
Published in Eurographics Symposium on Rendering 2017 / Computer Graphics Forum 36(4)

This document presents a comparison for different synthesis methods for every input.



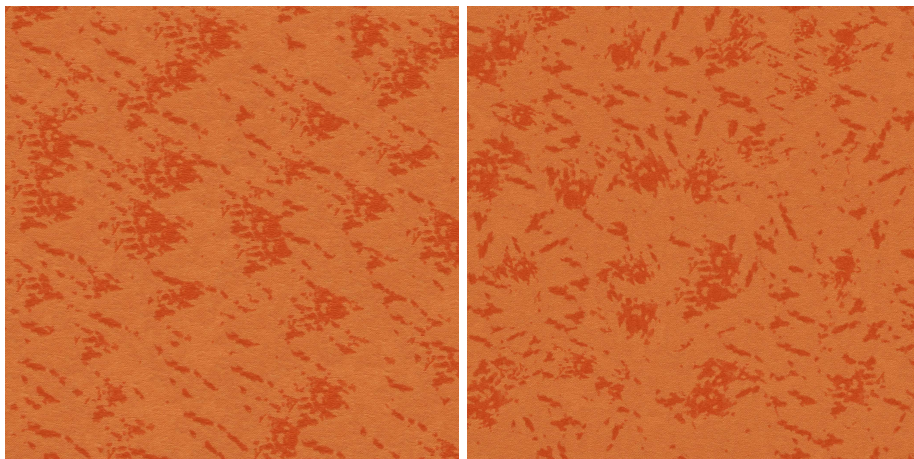
Input

Wang tiling



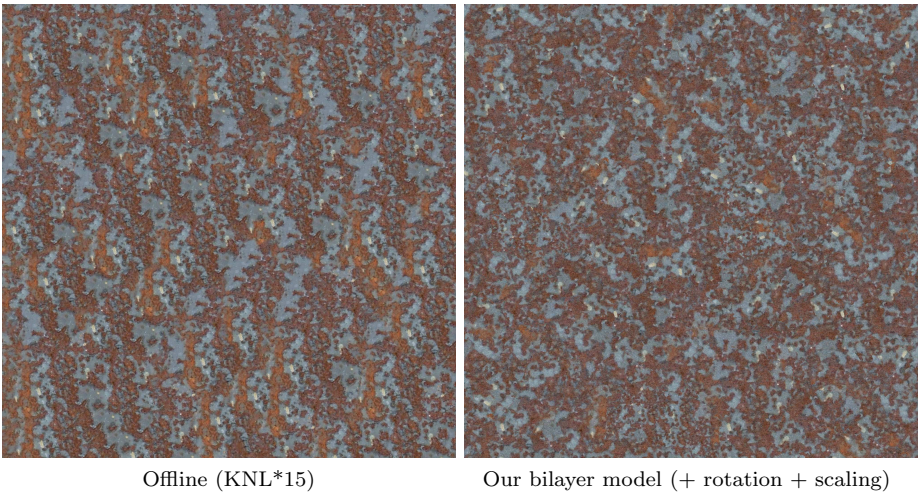
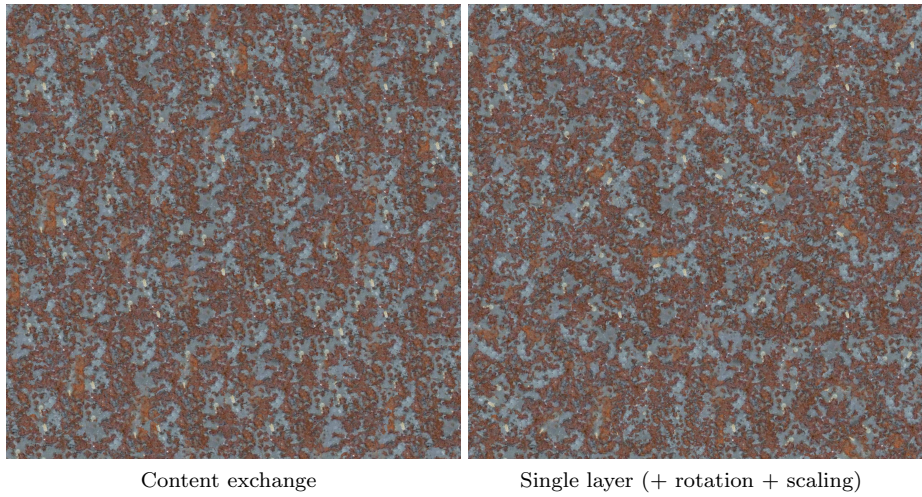
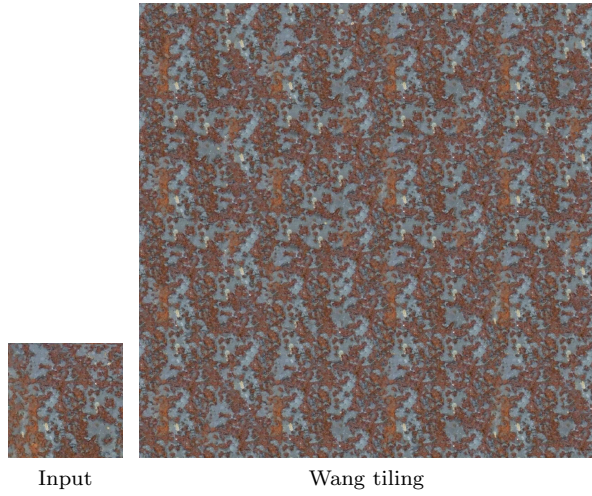
Content exchange

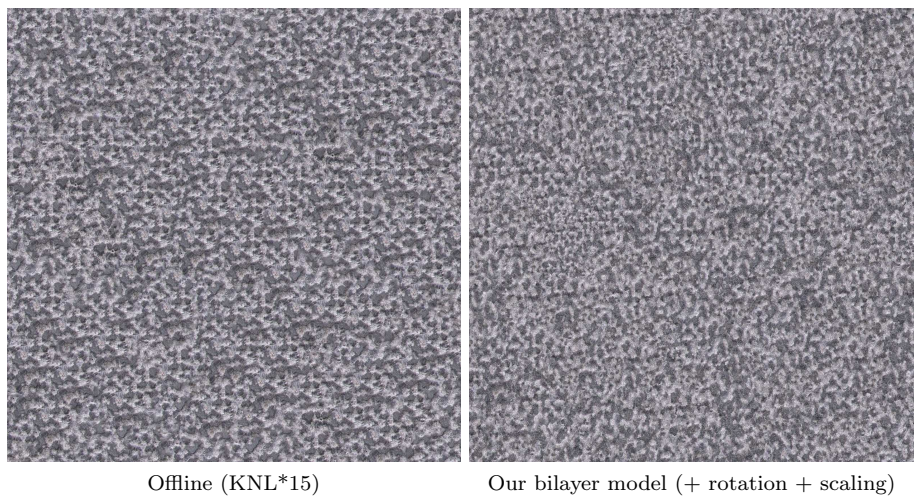
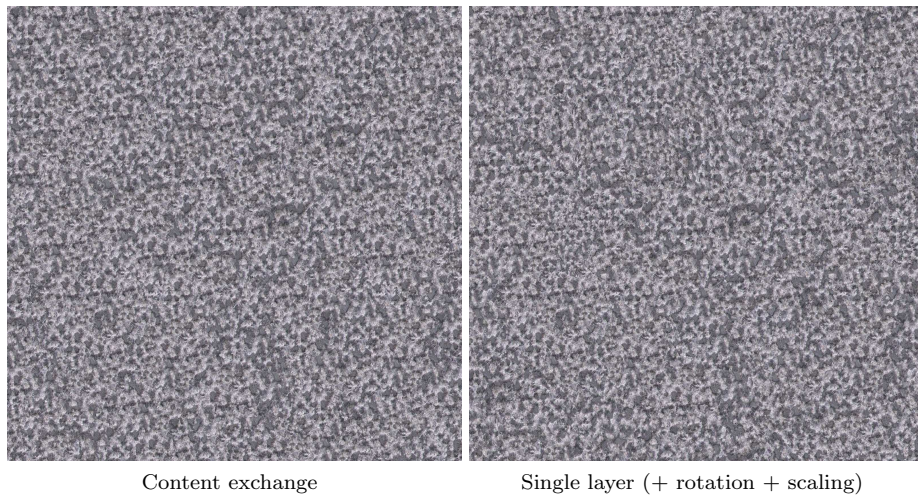
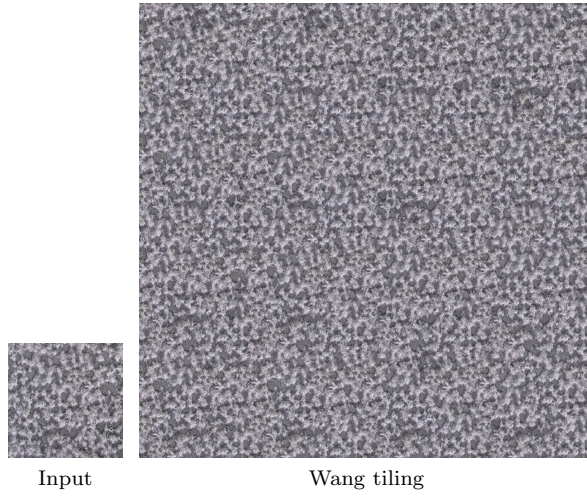
Single layer (+ rotation + scaling)



Offline (KNL*15)

Our bilayer model (+ rotation + scaling)







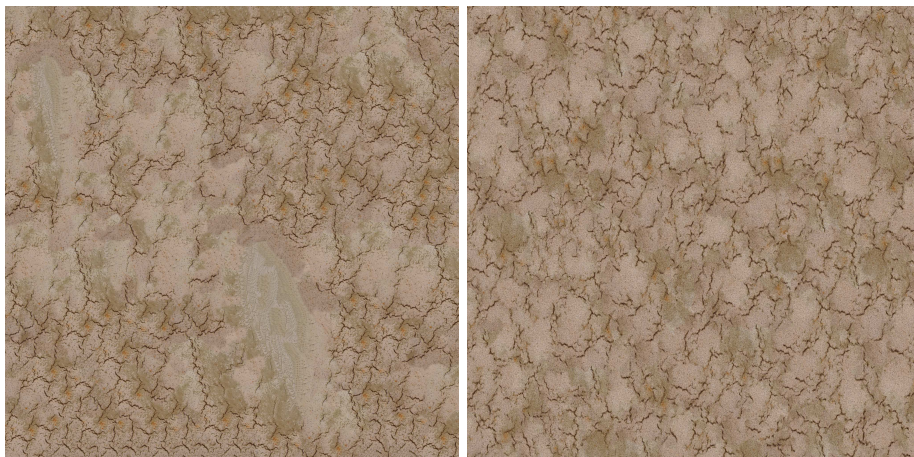
Input

Wang tiling



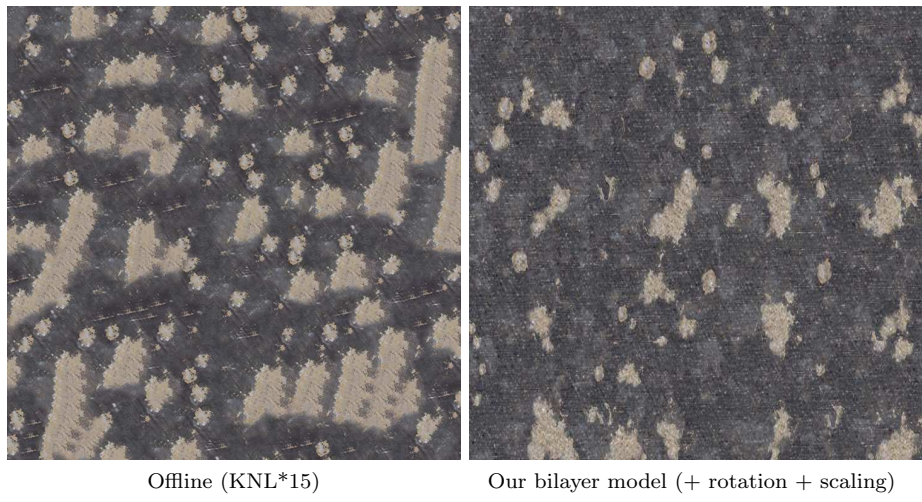
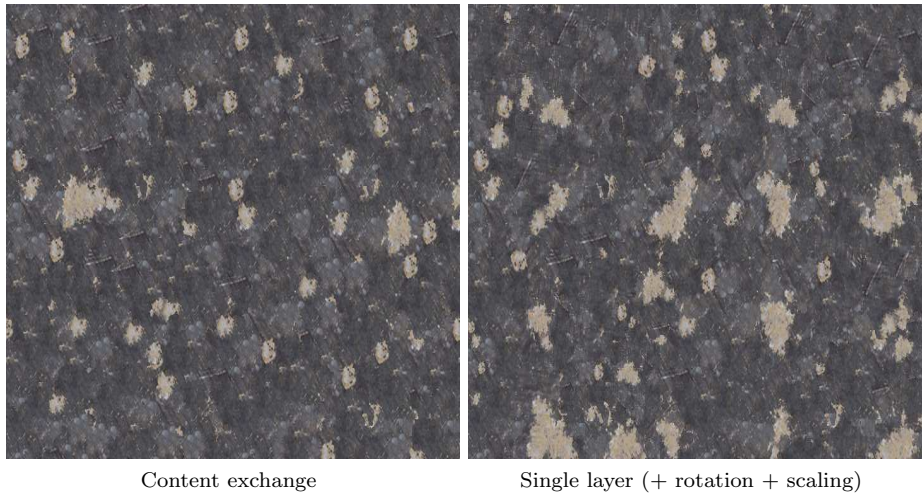
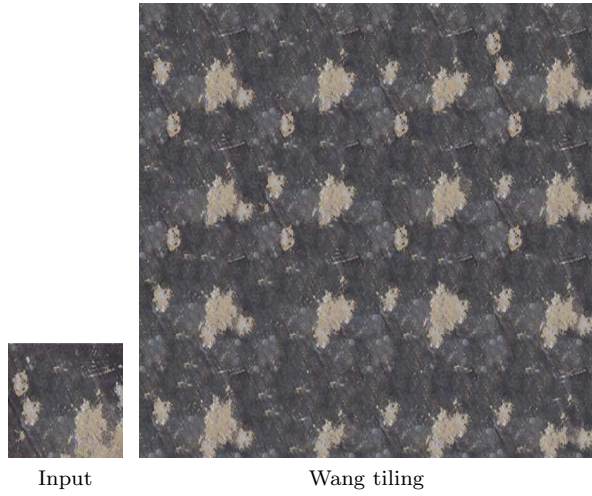
Content exchange

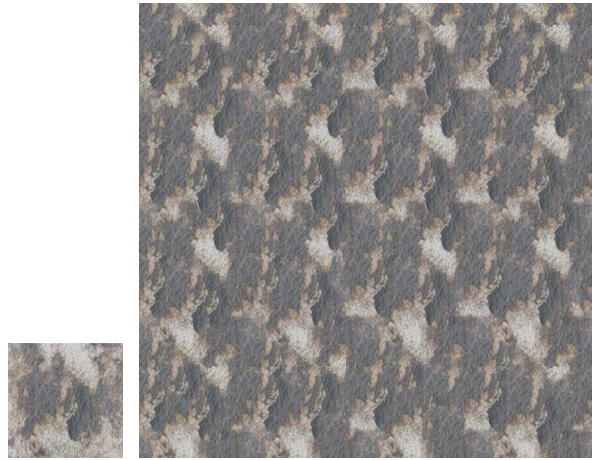
Single layer (+ rotation + scaling)



Offline (KNL*15)

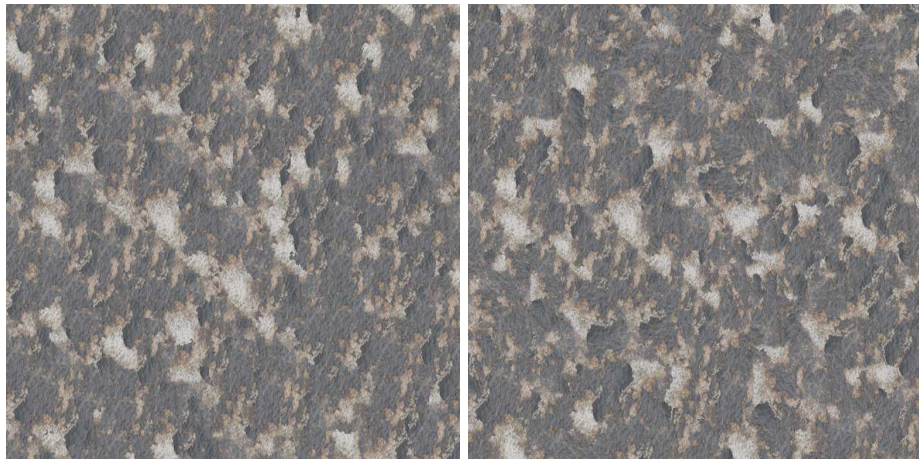
Our bilayer model (+ rotation + scaling)





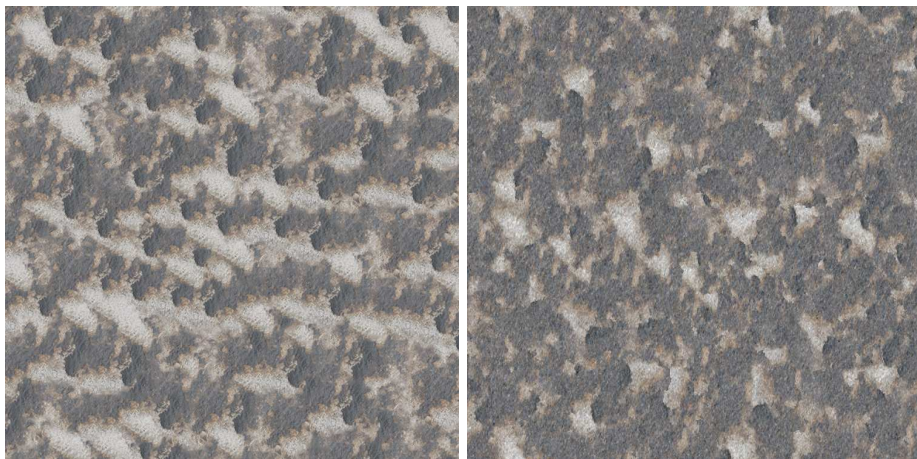
Input

Wang tiling



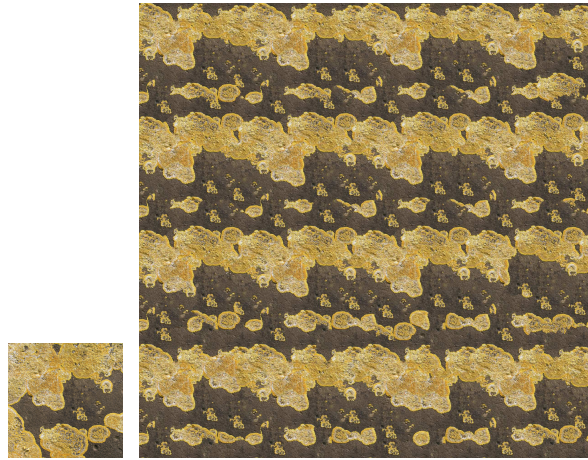
Content exchange

Single layer (+ rotation + scaling)



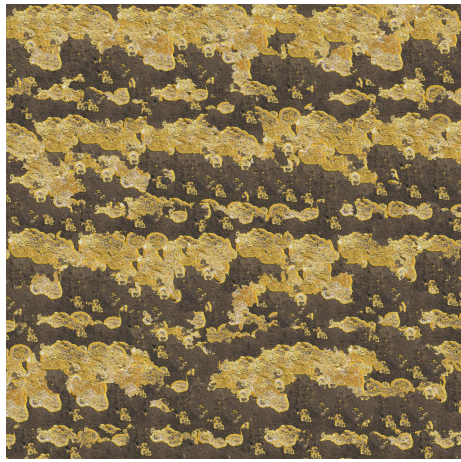
Offline (KNL*15)

Our bilayer model (+ rotation + scaling)

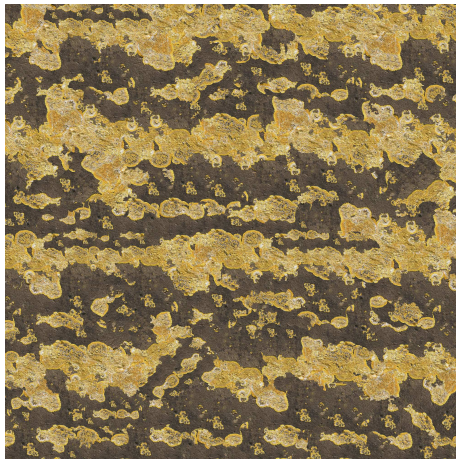


Input

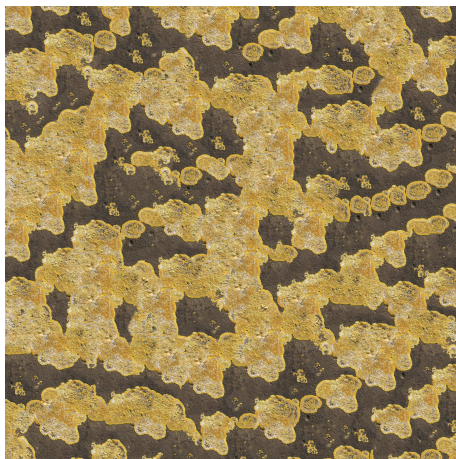
Wang tiling



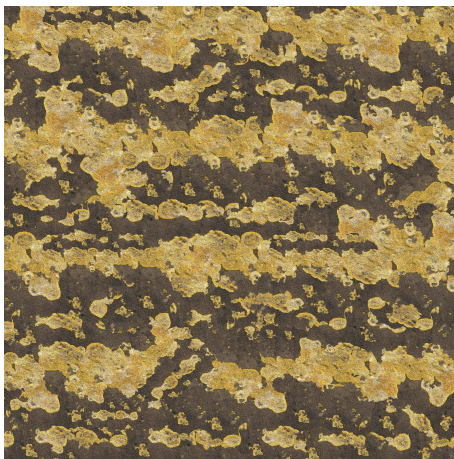
Content exchange



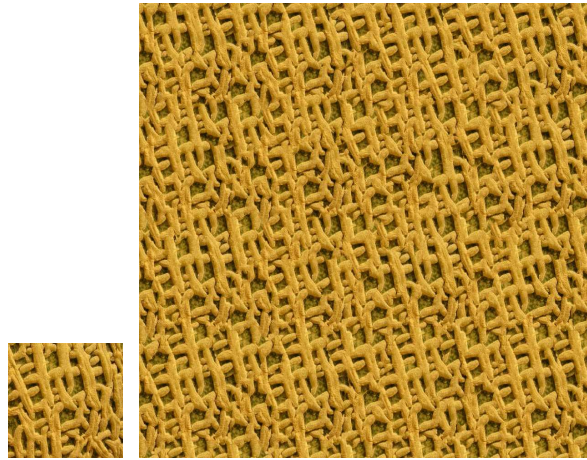
Single layer (+ rotation + scaling)



Offline (KNL*15)

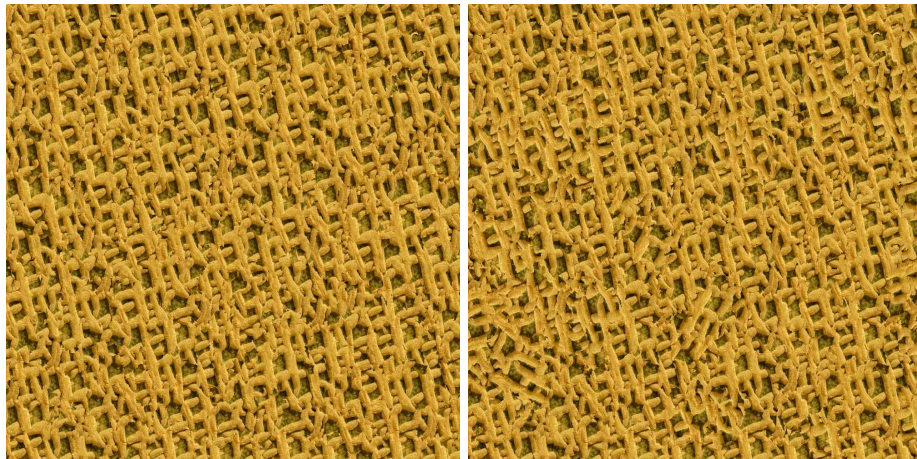


Our bilayer model (+ rotation + scaling)



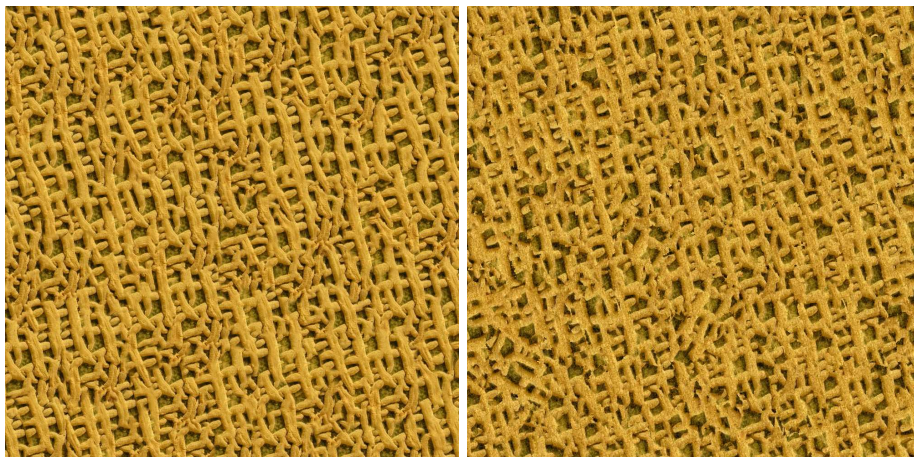
Input

Wang tiling



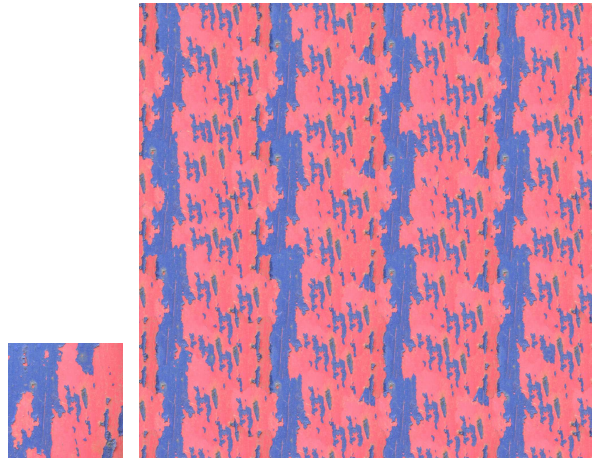
Content exchange

Single layer (+ rotation + scaling)



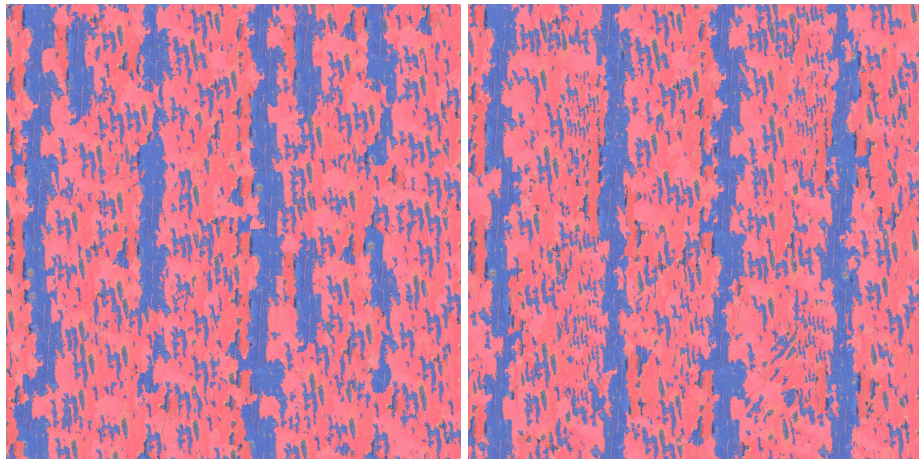
Offline (KNL*15)

Our bilayer model (+ rotation + scaling)



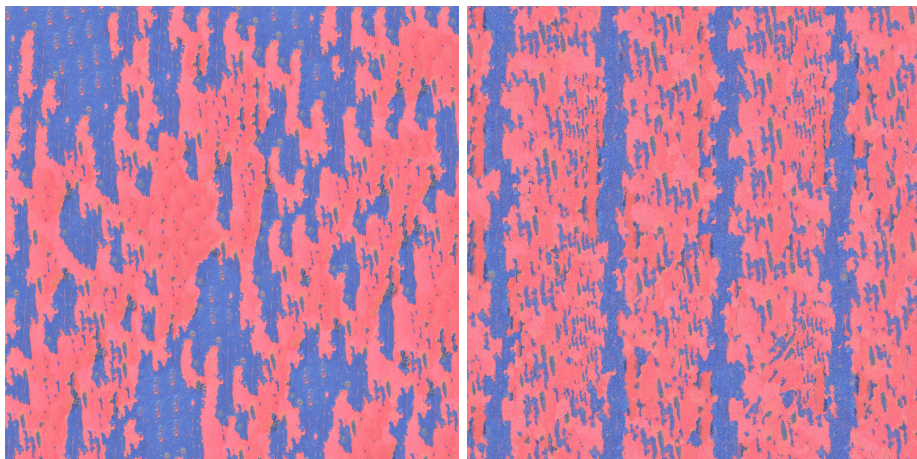
Input

Wang tiling



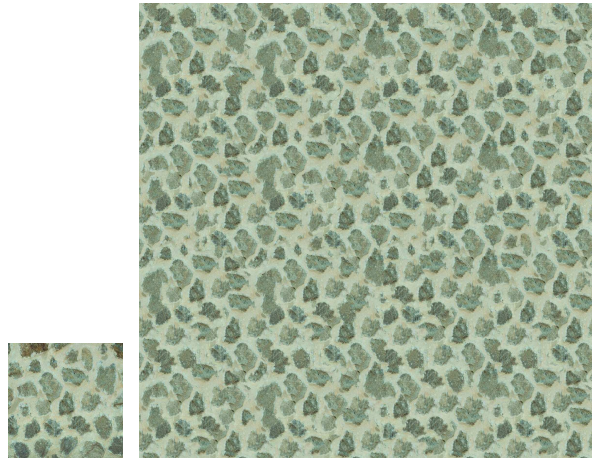
Content exchange

Single layer (+ rotation + scaling)



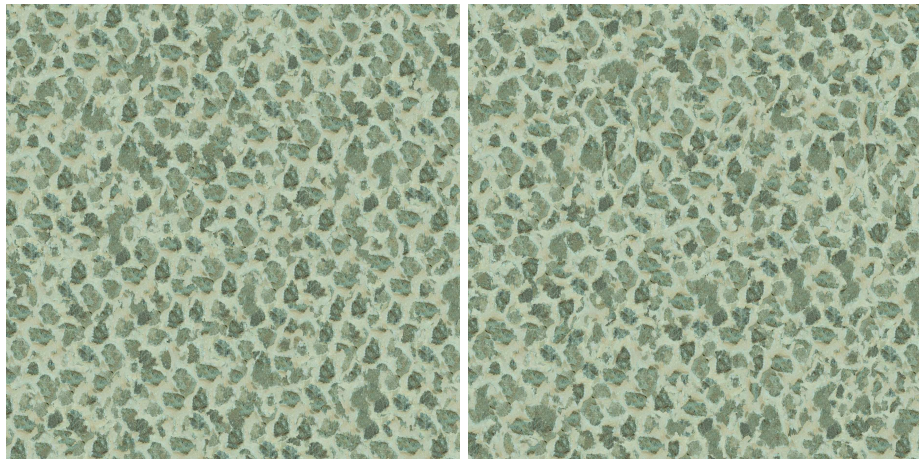
Offline (KNL*15)

Our bilayer model (+ rotation + scaling)



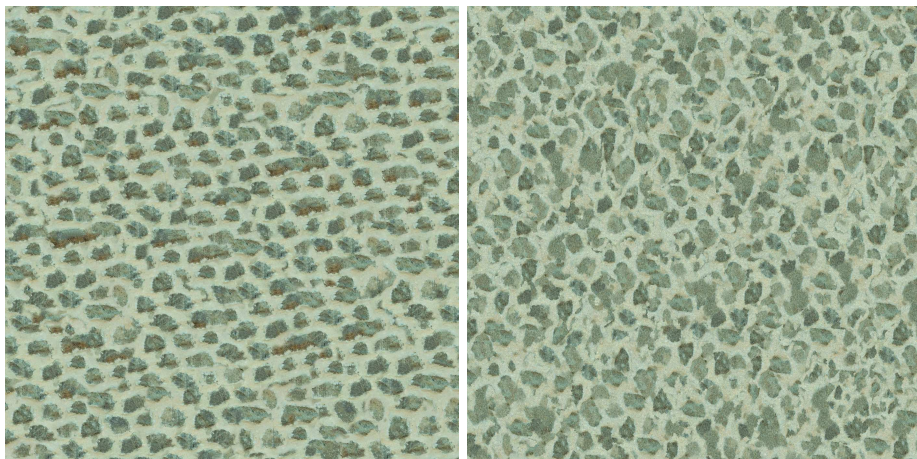
Input

Wang tiling



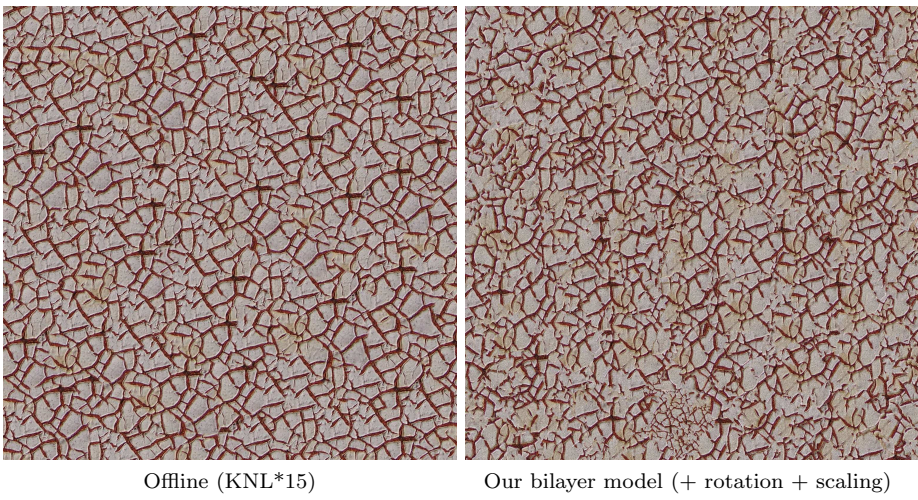
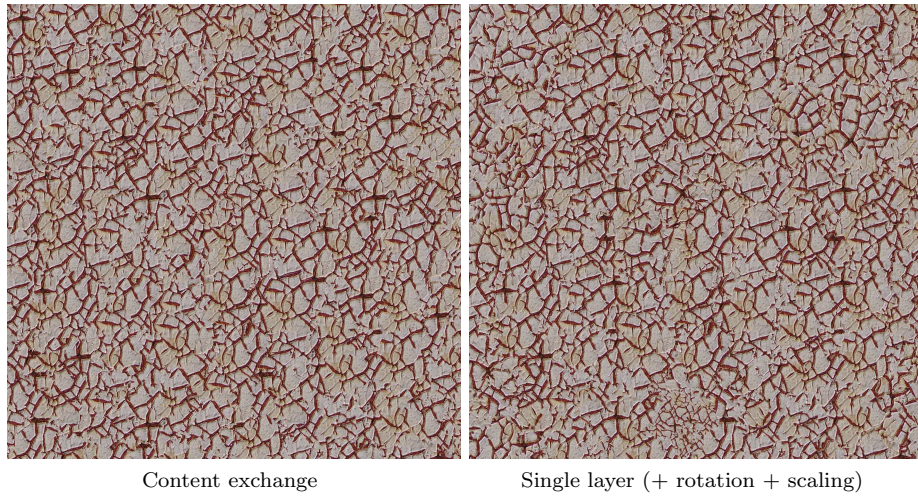
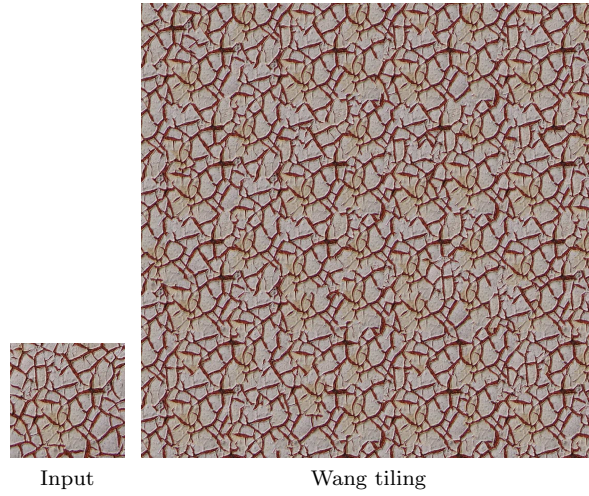
Content exchange

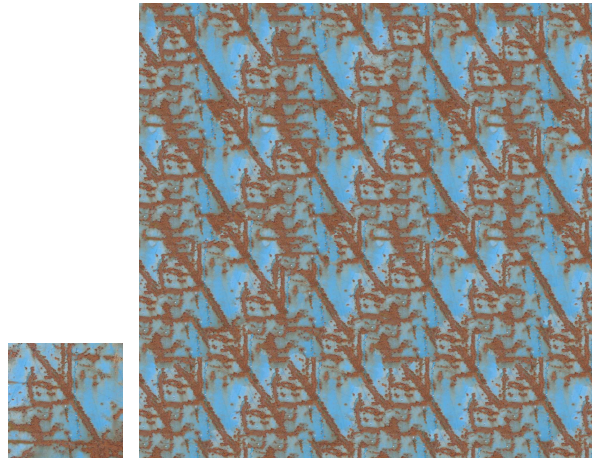
Single layer (+ rotation + scaling)



Offline (KNL*15)

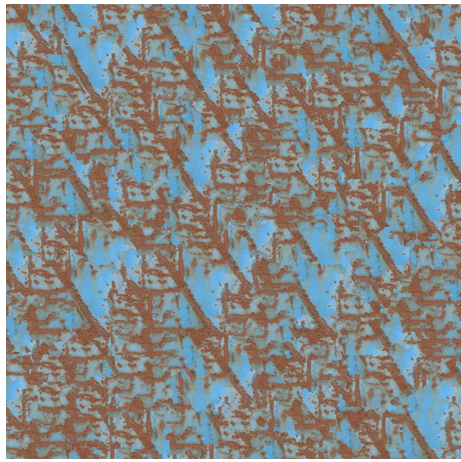
Our bilayer model (+ rotation + scaling)



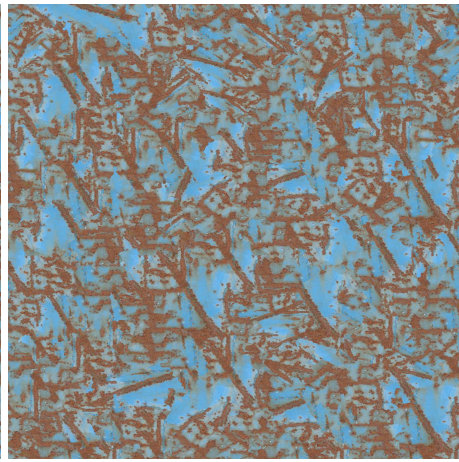


Input

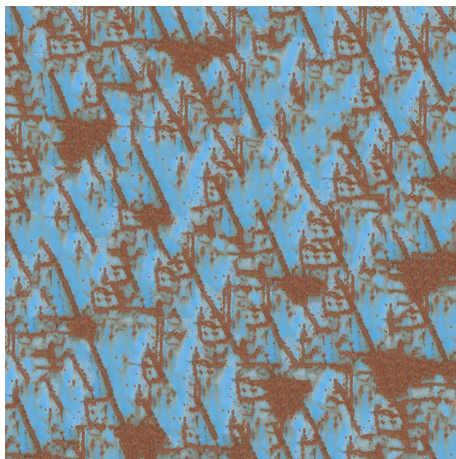
Wang tiling



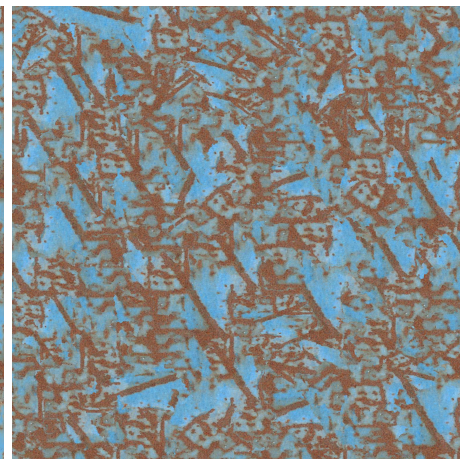
Content exchange



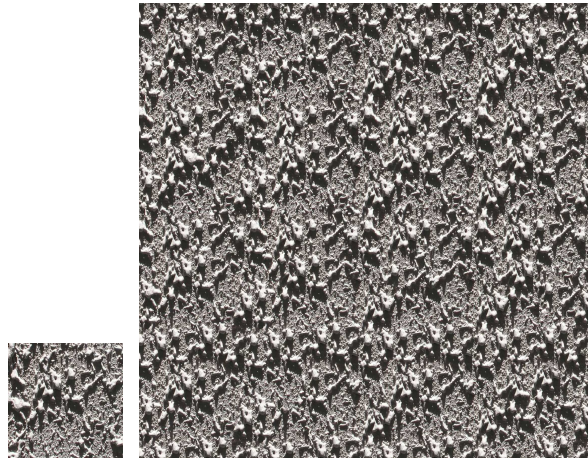
Single layer (+ rotation + scaling)



Offline (KNL*15)

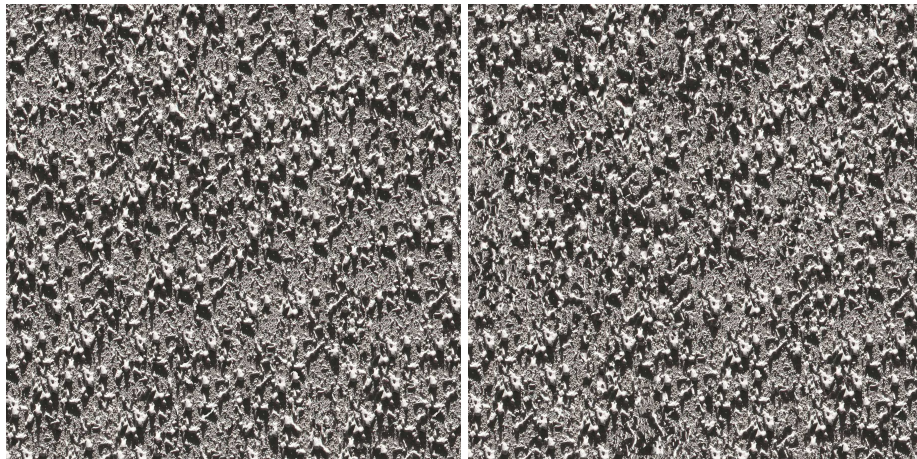


Our bilayer model (+ rotation + scaling)



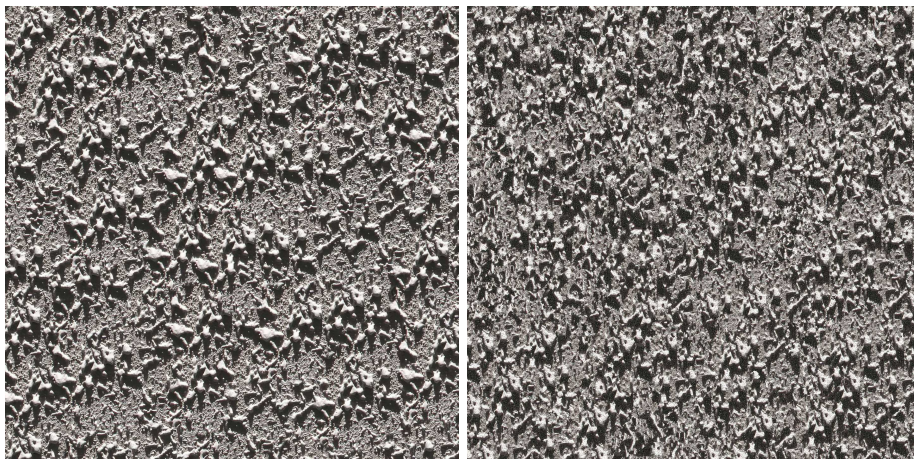
Input

Wang tiling



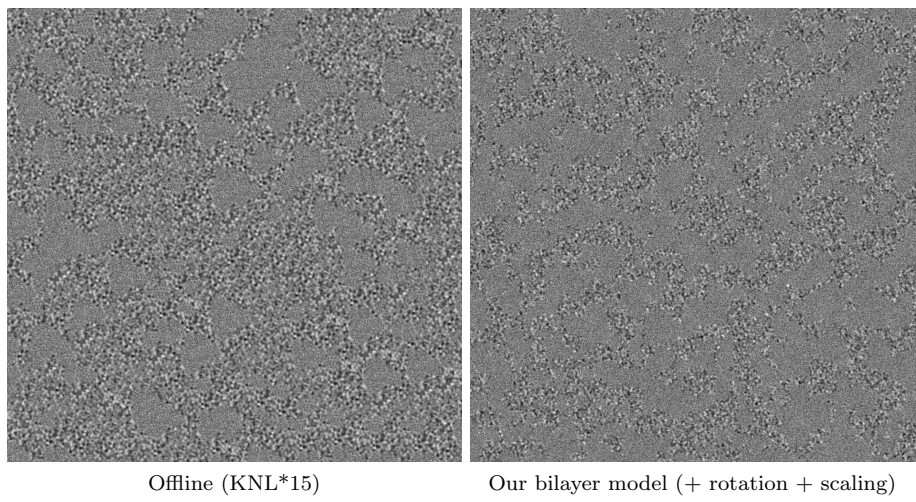
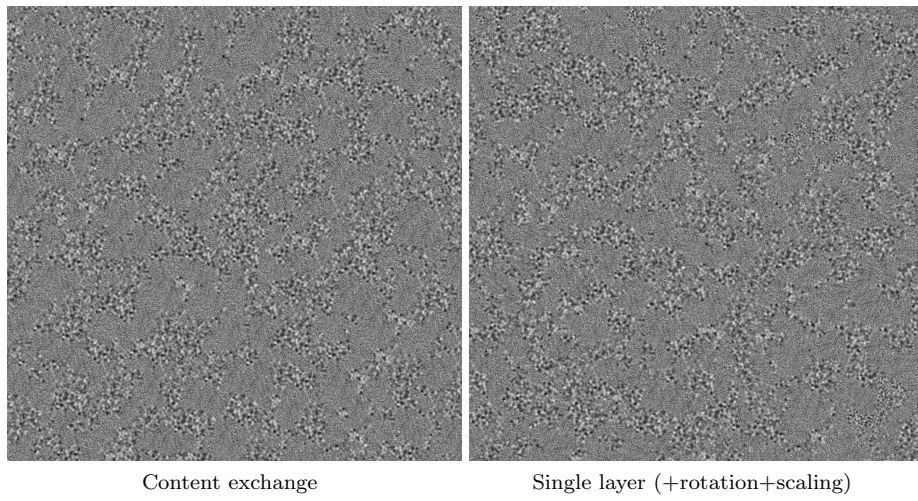
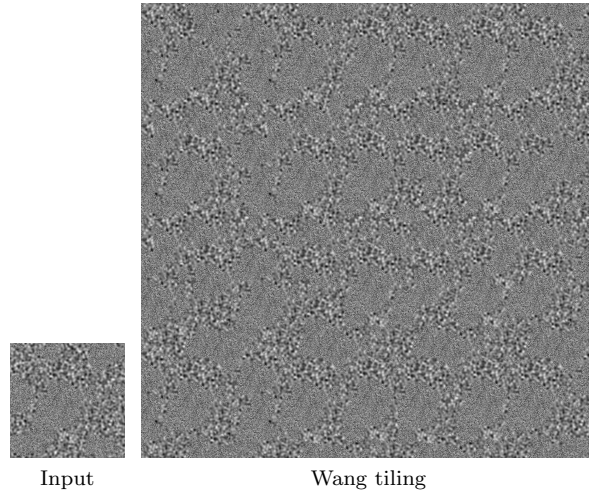
Content exchange

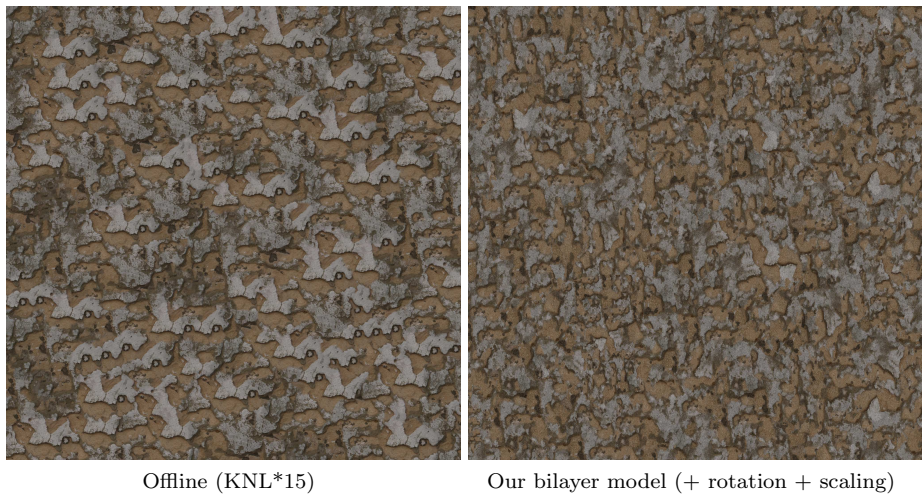
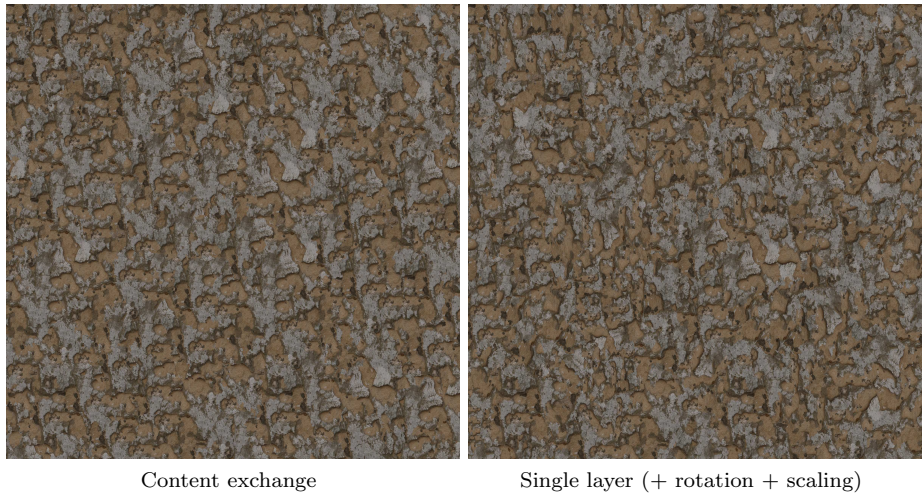
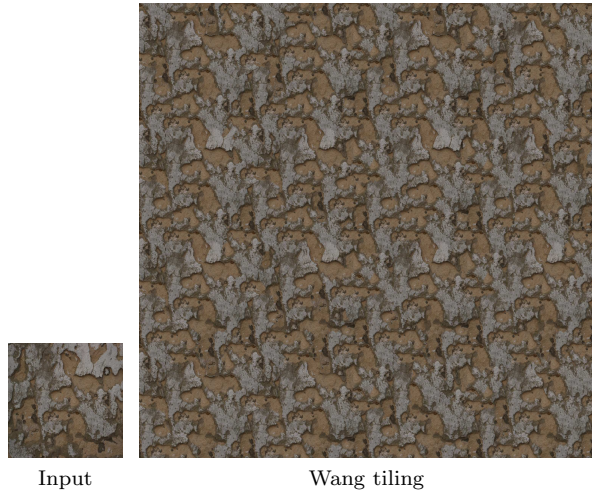
Single layer (+ rotation + scaling)

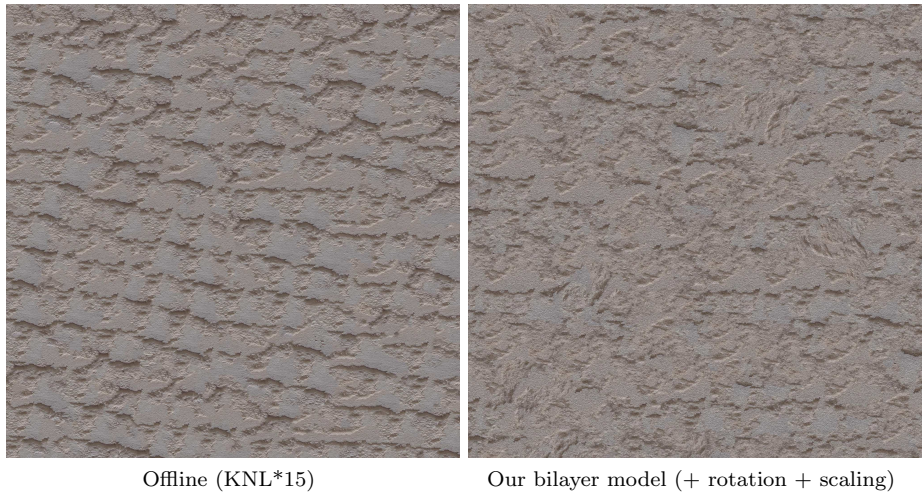
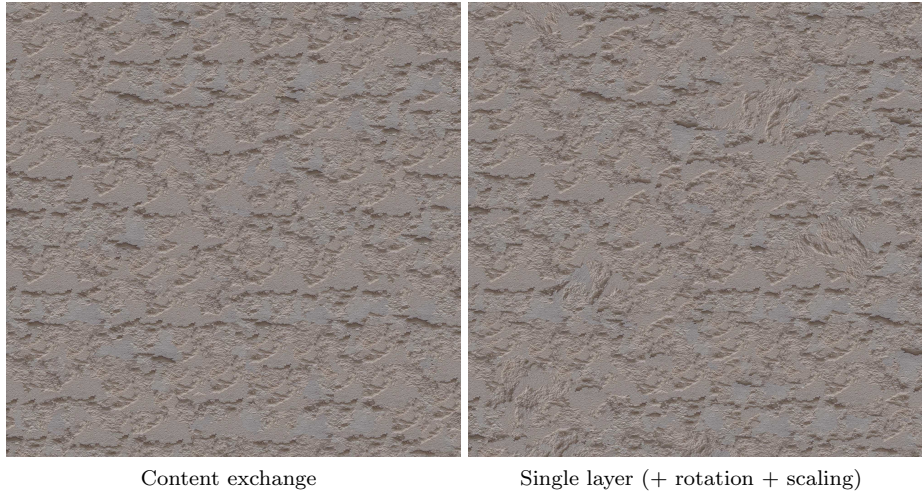
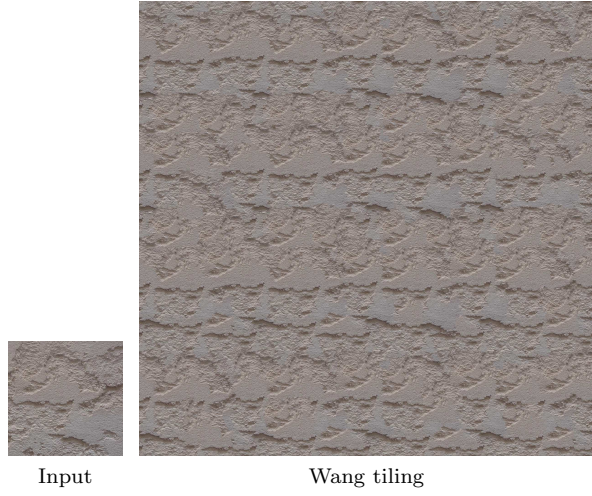


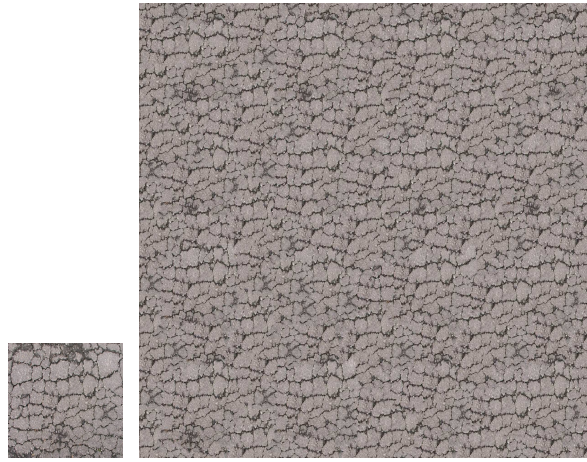
Offline (KNL*15)

Our bilayer model (+ rotation + scaling)



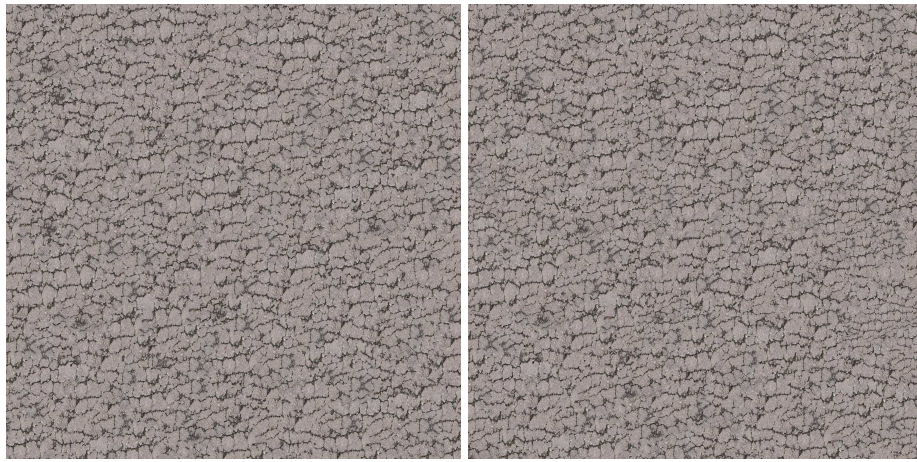






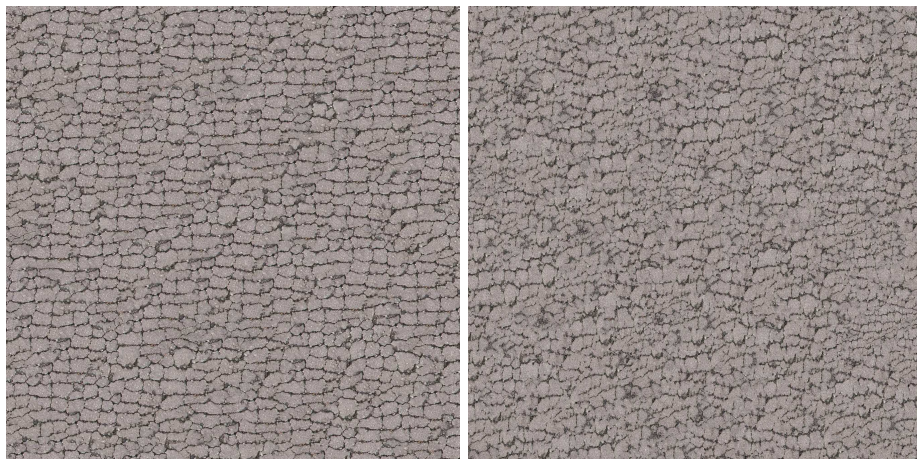
Input

Wang tiling



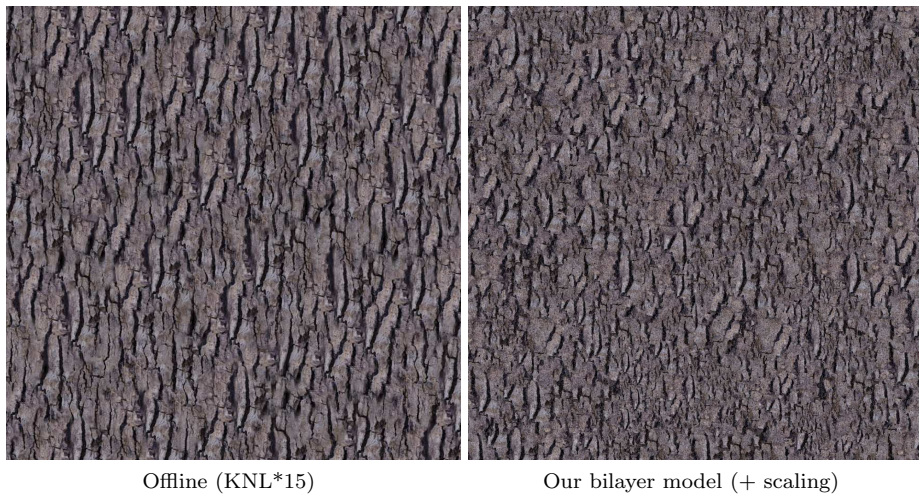
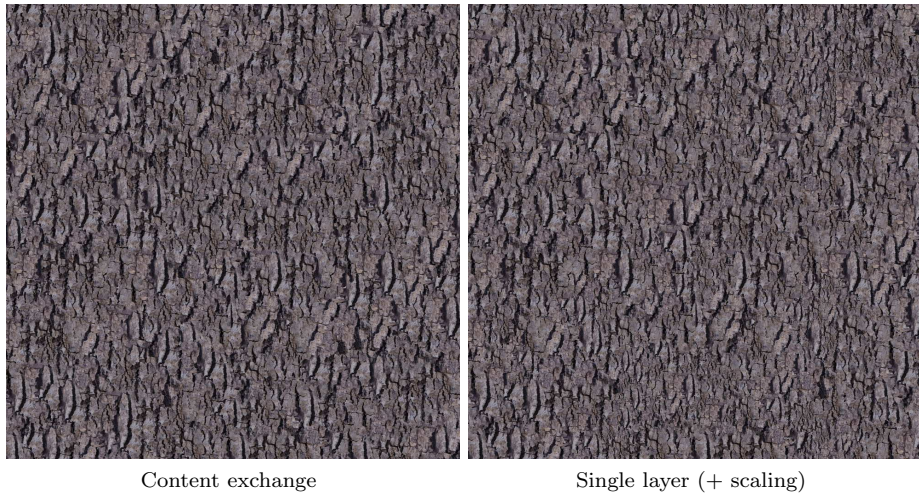
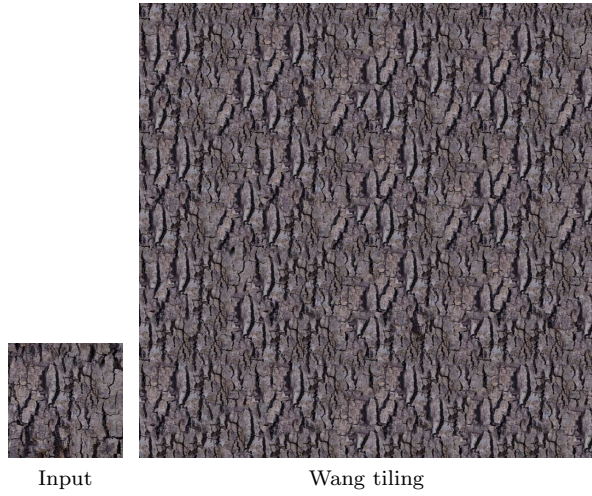
Content exchange

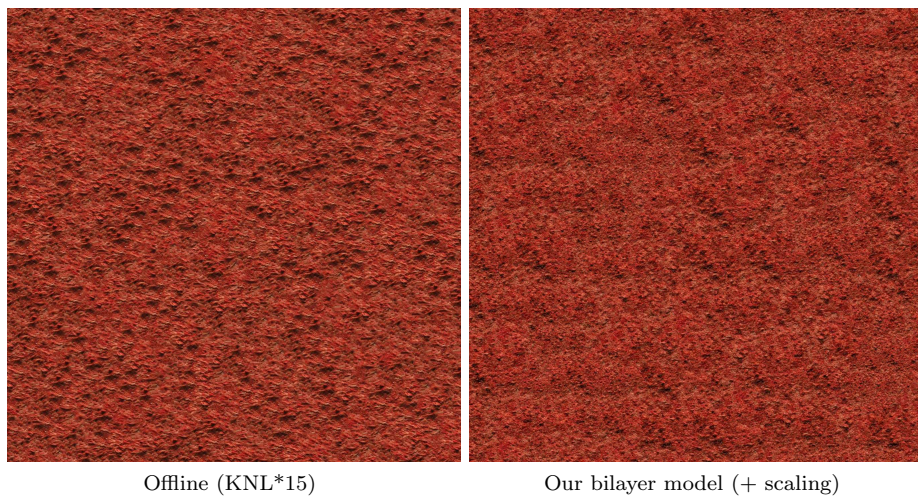
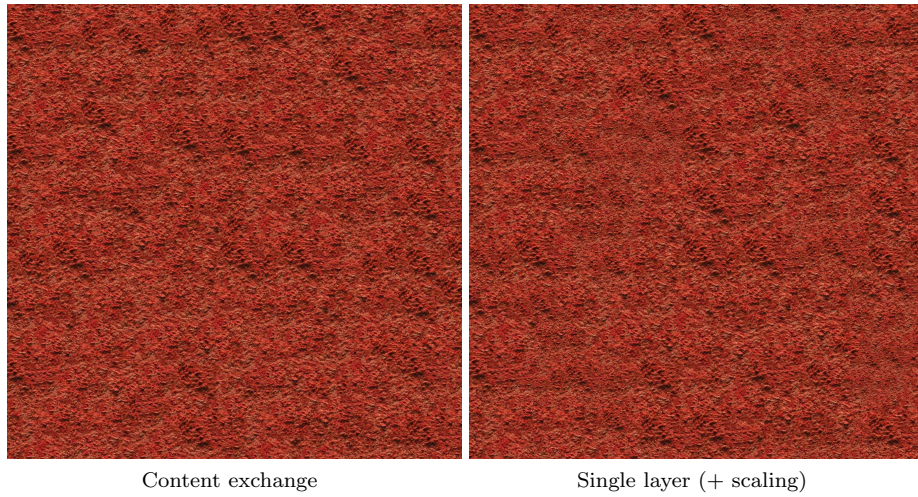
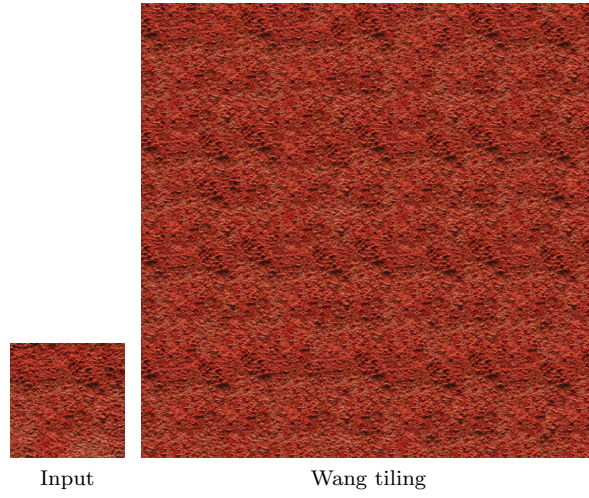
Single layer (+ scaling)

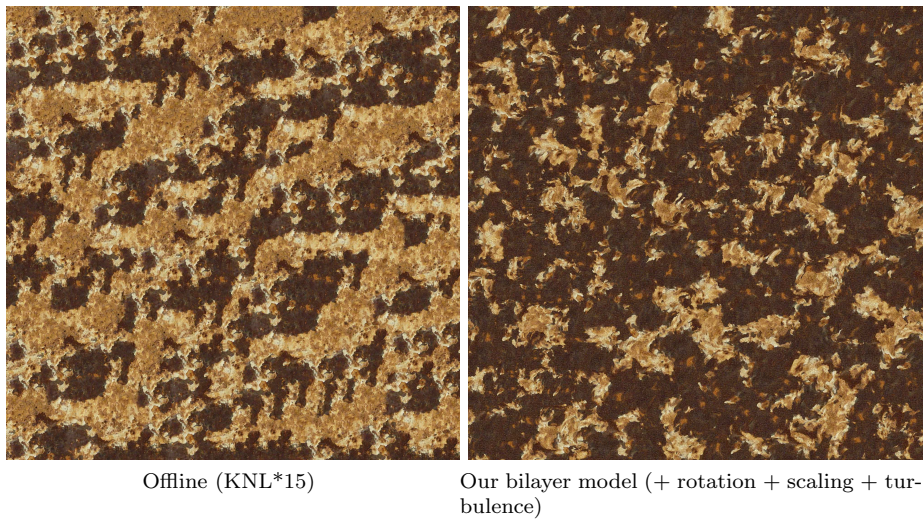
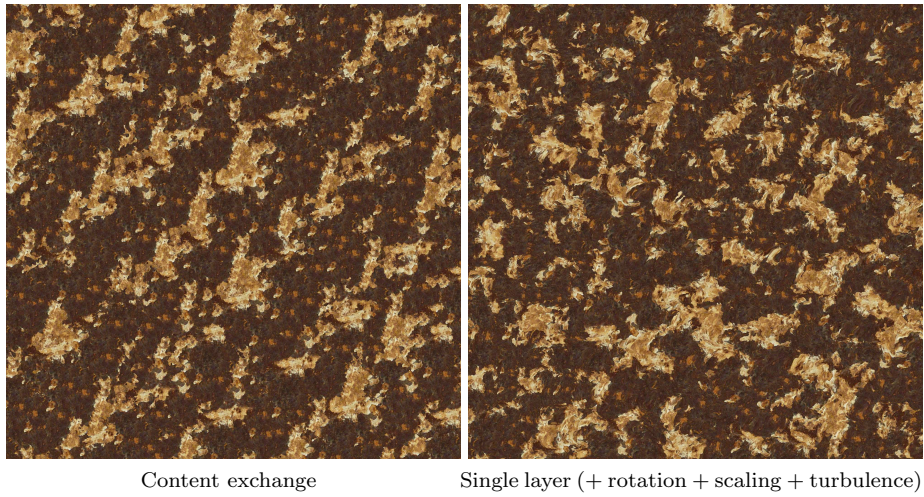
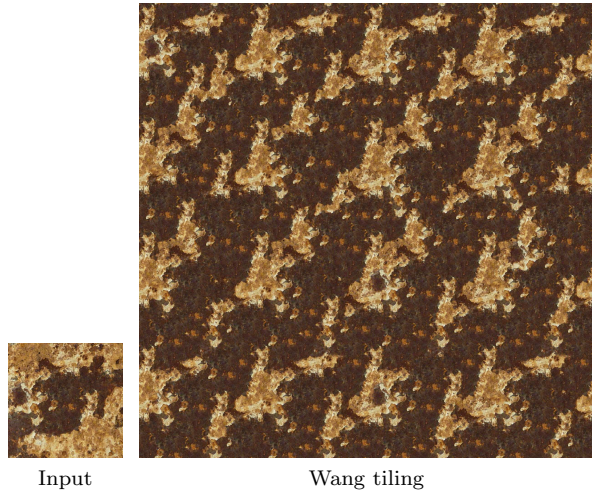


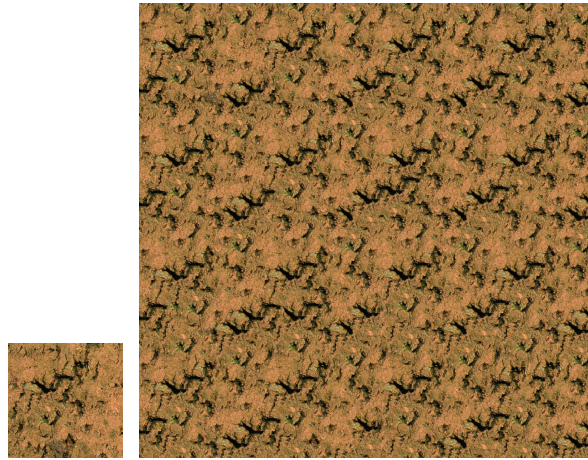
Offline (KNL*15)

Our bilayer model (+ scaling)



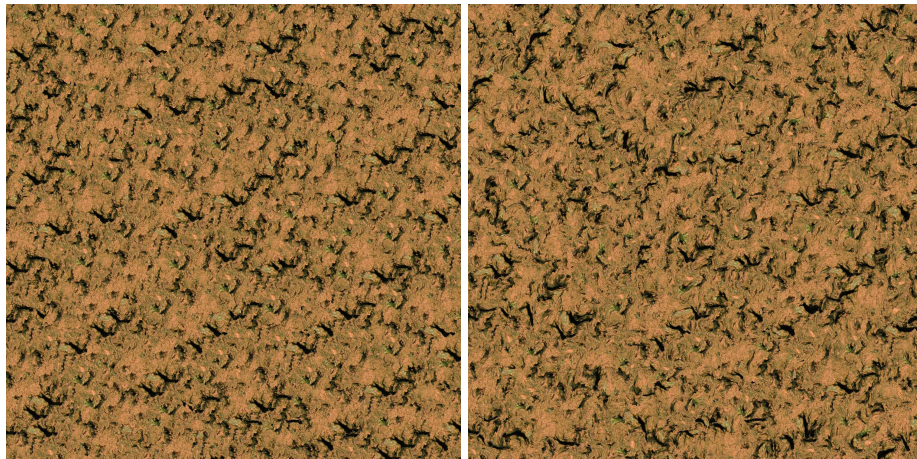






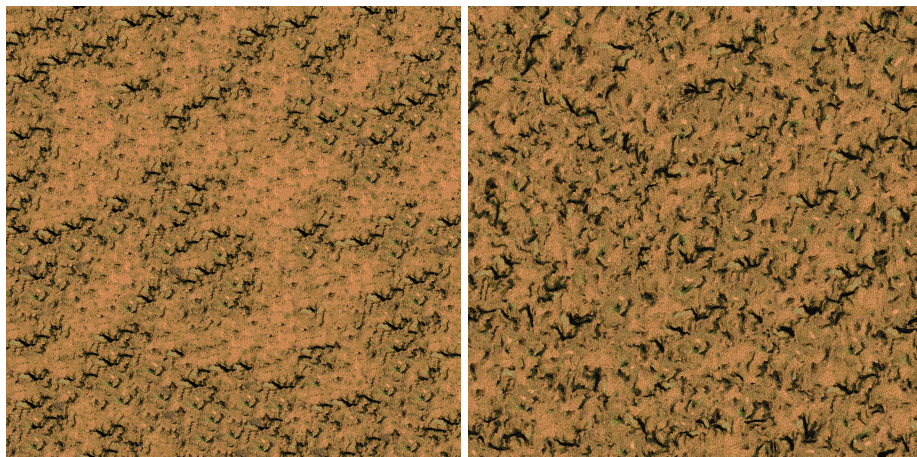
Input

Wang tiling



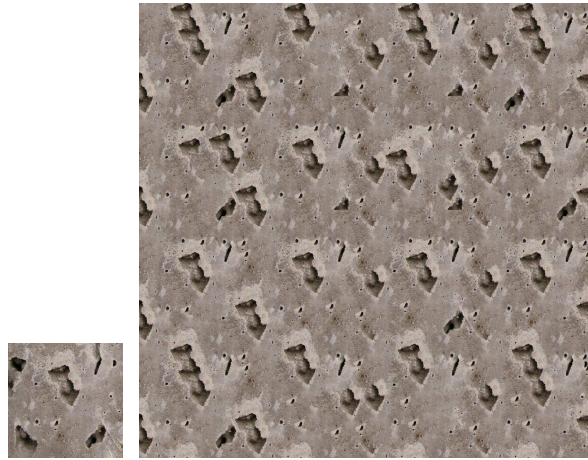
Content exchange

Single layer (+ rotation + scaling + turbulence)



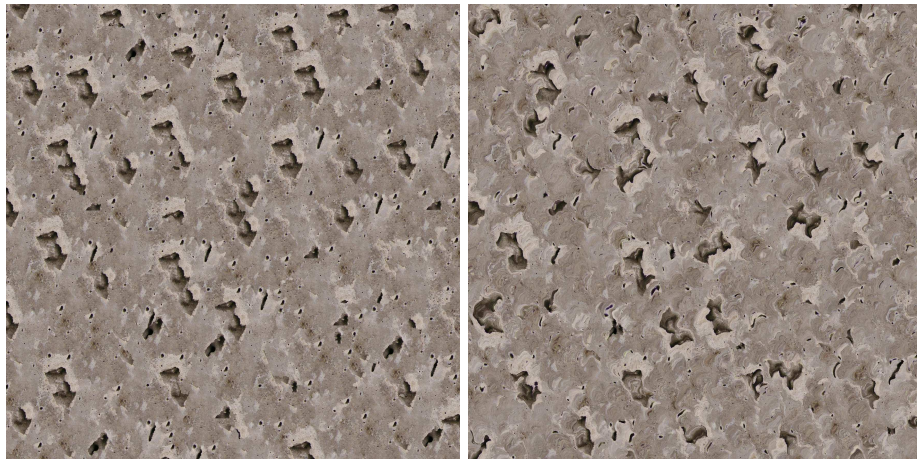
Offline (KNL*15)

Our bilayer model (+ rotation + scaling + turbulence)



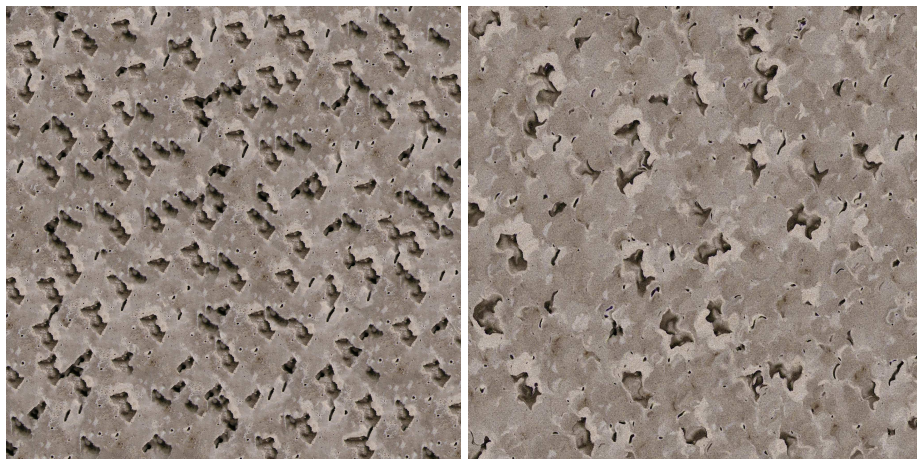
Input

Wang tiling



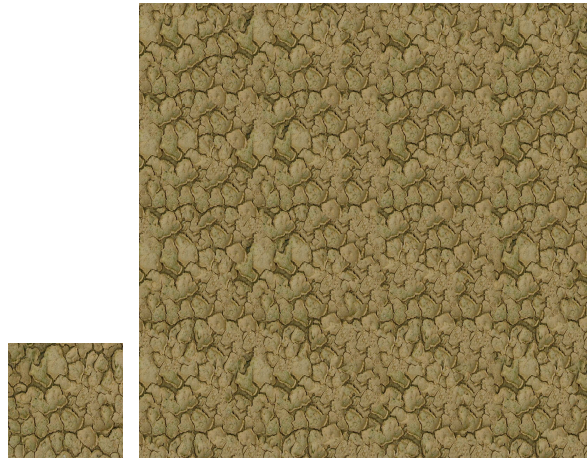
Content exchange

Single layer (+ rotation + scaling + turbulence)



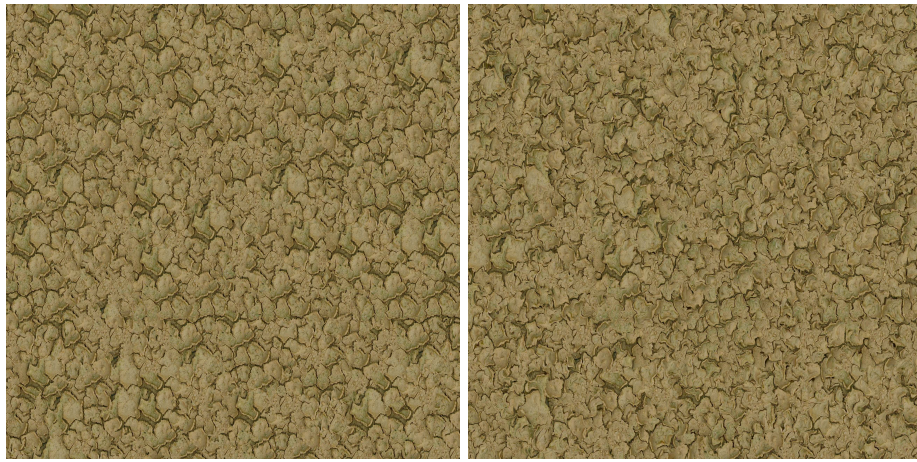
Offline (KNL*15)

Our bilayer model (+ rotation + scaling + turbulence)



Input

Wang tiling



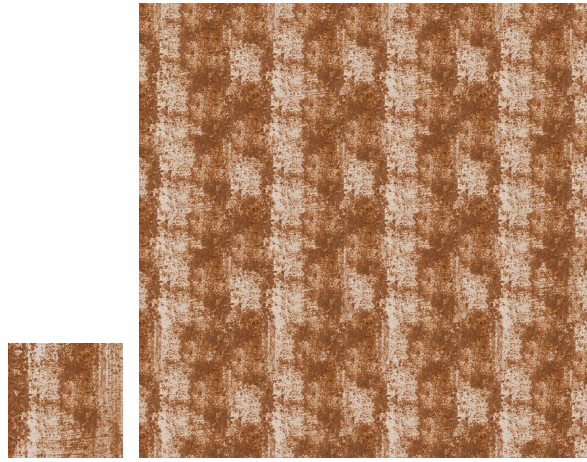
Content exchange

Single layer (+ rotation + scaling + turbulence)



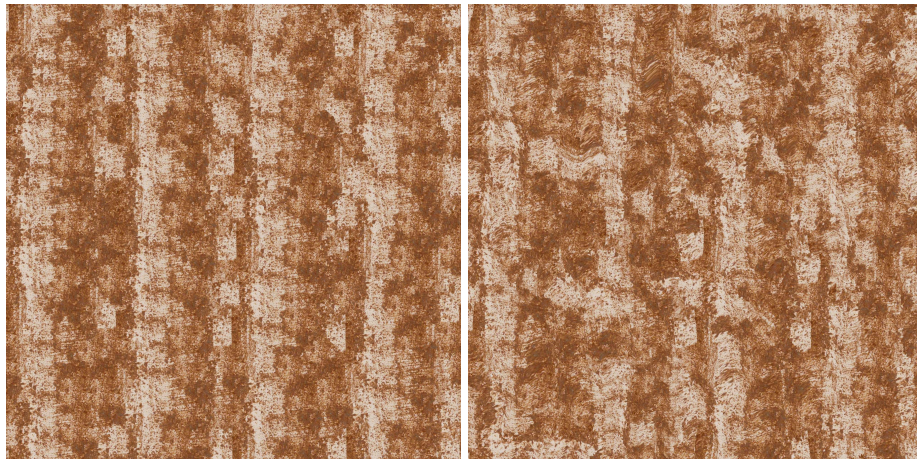
Offline (KNL*15)

Our bilayer model (+ rotation + scaling + turbulence)



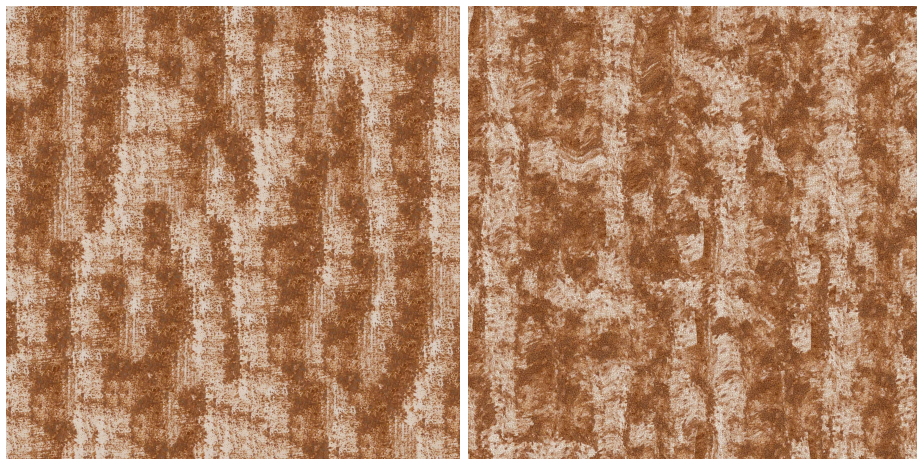
Input

Wang tiling



Content exchange

Single layer (+ rotation + scaling + turbulence)



Offline (KNL*15)

Our bilayer model (+ rotation + scaling + turbulence)