



HAL
open science

BasePetroCeram: a database for petrographic and geochemical analysis of archaeological ceramics

Jean-Baptiste Barreau, Benjamin Gehres

► **To cite this version:**

Jean-Baptiste Barreau, Benjamin Gehres. BasePetroCeram: a database for petrographic and geochemical analysis of archaeological ceramics. EMAC 2015 - 13th European Meeting on Ancient Ceramics, Sep 2015, Athènes, Greece. hal-01519774

HAL Id: hal-01519774

<https://hal.science/hal-01519774v1>

Submitted on 9 May 2017

HAL is a multi-disciplinary open access archive for the deposit and dissemination of scientific research documents, whether they are published or not. The documents may come from teaching and research institutions in France or abroad, or from public or private research centers.

L'archive ouverte pluridisciplinaire **HAL**, est destinée au dépôt et à la diffusion de documents scientifiques de niveau recherche, publiés ou non, émanant des établissements d'enseignement et de recherche français ou étrangers, des laboratoires publics ou privés.

BasePetroCeram: a database for petrographic and geochemical analysis of archaeological ceramics

JB. Barreau¹ and B. Gehres²

¹ CNRS, CReAAH Campus de Beaulieu 35042 RENNES Cedex France, jean-baptiste.barreau@univ-rennes1.fr

² Université Rennes 2, Bâtiment A, salle A 118, Place du Recteur Henri Le Moal, 35043 Rennes Cedex, benjamin.gehres@gmail.com

ABSTRACT

Based on ceramics petrographic and geochemical studies, "BasePetroCeram" project aims to reference petrographic and geochemical analysis of archaeological ceramics from France. In the form of a secure database associated with a web interface, this tool allows a stronger recognition of ceramic bodies, as well as exchanges over long distances, but also collaboration of research teams and emergence of new issues.

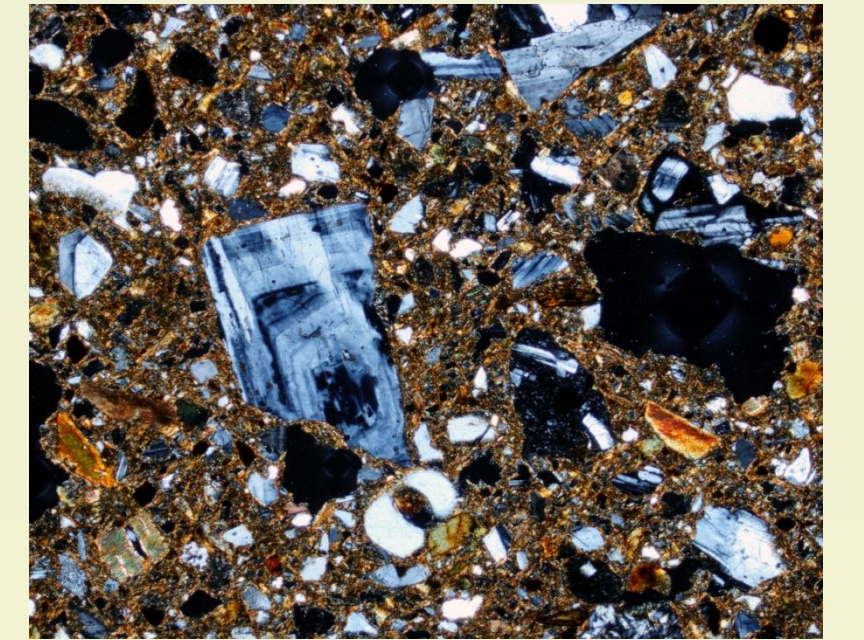
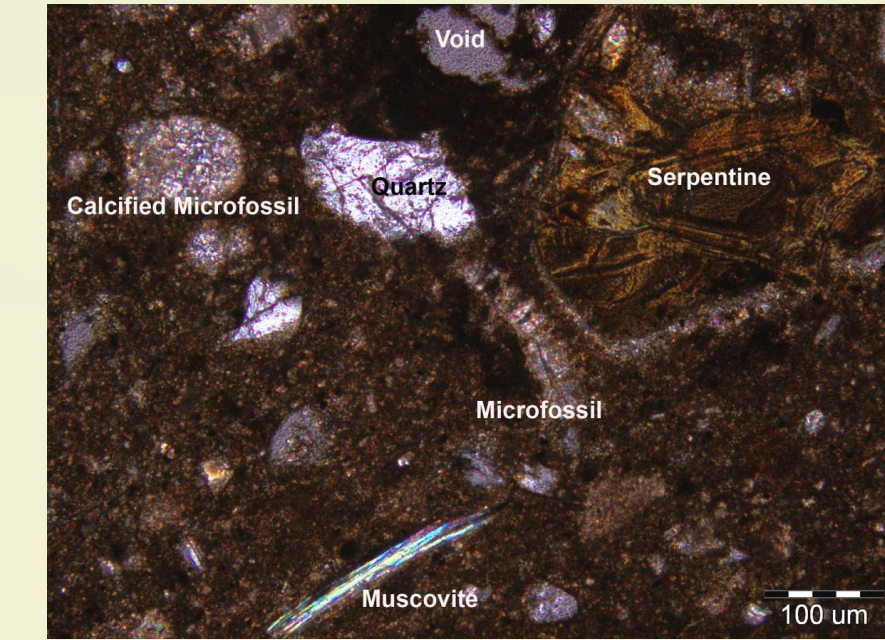
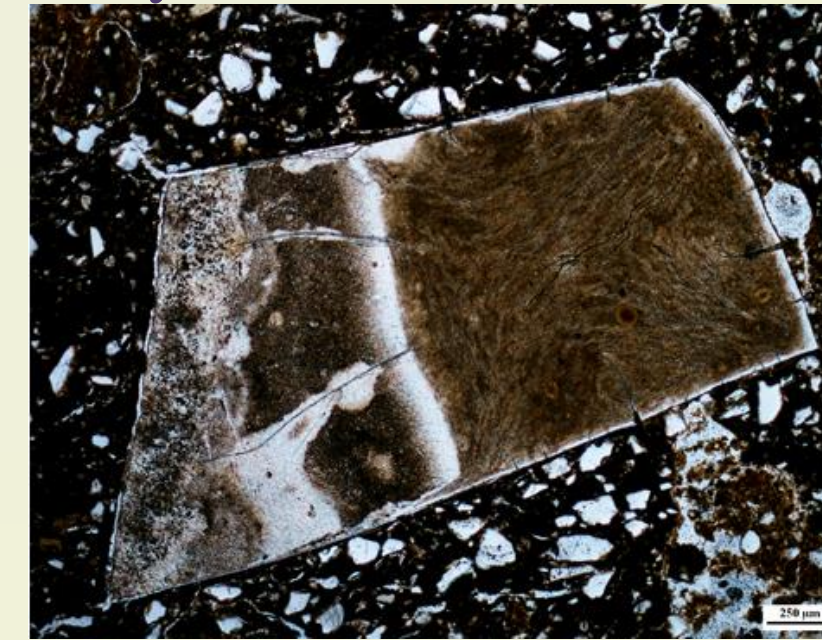
From a technical point of view, the web framework used is FuelPHP, which is a set of open-source software components written in PHP, and implements the MVC design pattern. It allows the fast implementation of the basic operations like CRUD (Create, Read, Update, Delete). The database is managed by the object-relational database management system PostgreSQL and is hosted on a perennial server administered by the University of Rennes. Automatic generation of interactive maps finally uses the free software library Leaflet.

The web interface allows to put on-line published data, bibliographic references, secured raw analysis results or photos for the periods from the Neolithic to Modern History. This database records can be submitted directly by registered researchers, PhD students and students, and provide a new means of recognition and contact between specialists in the field.

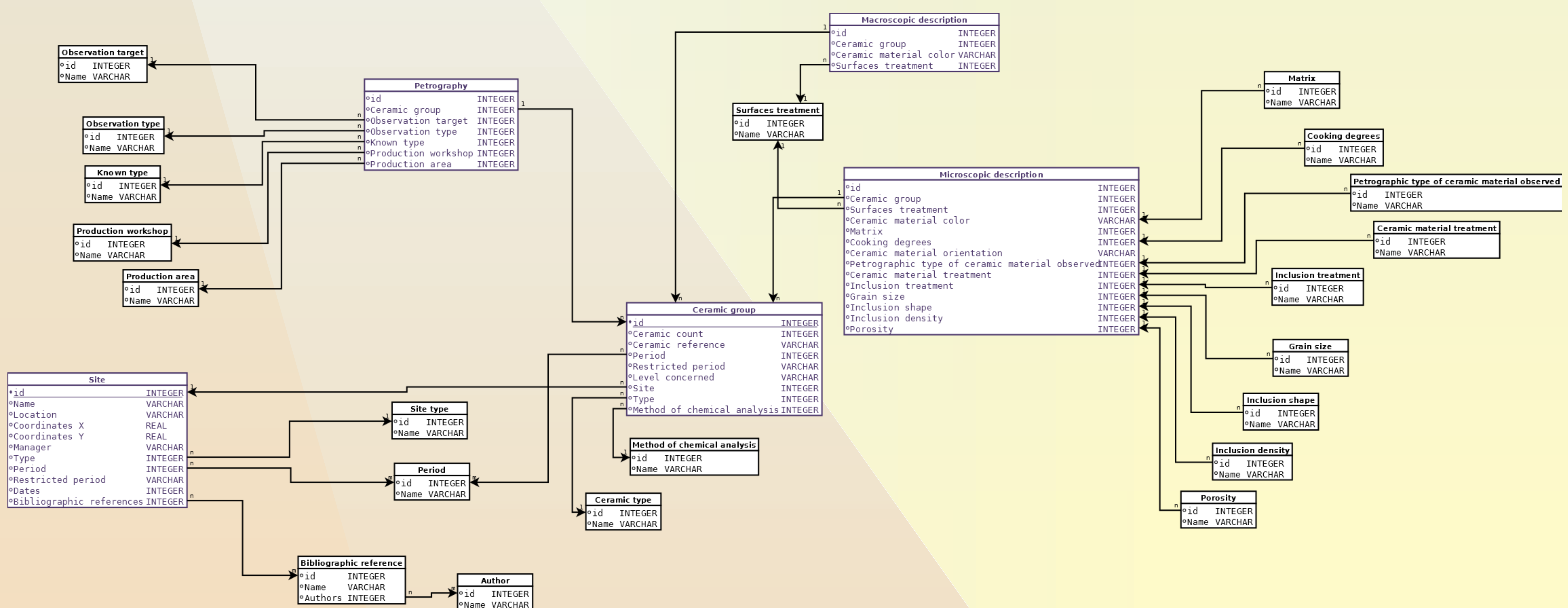
I/ CONTEXT

Many petrographic analysis of ceramics are conducted in France. However, the lack of a centralisation of the results don't allow us to make quickly comparisons on the regional or national scale.

The objective of this online database is to provide a tool for the petro-ceramologists and the archaeologists in order to compare their results, and to highlight their analysis, who are in some case few diffused, and to create a group dynamics at the national scale. Moreover, we would like to provide a framework for a live entered information during the petrographic and chemical analysis of the ceramics.

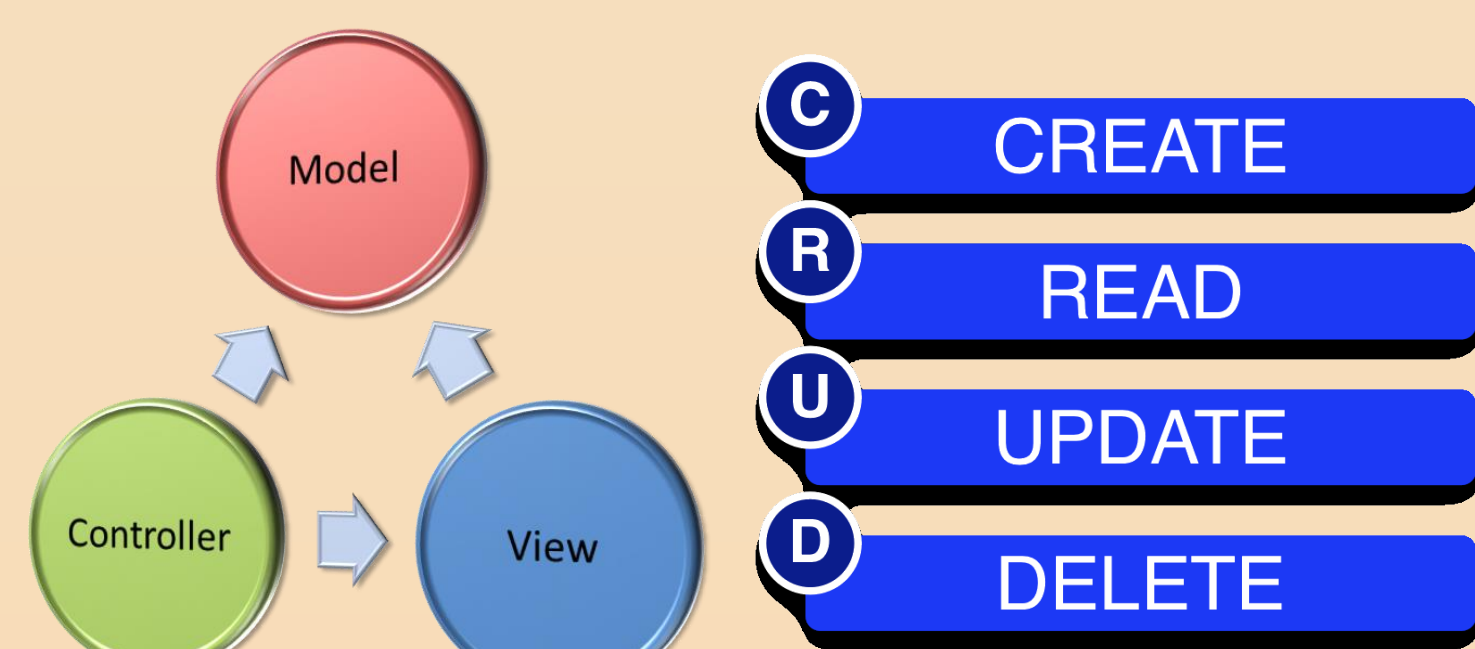


II/ DATA MODEL



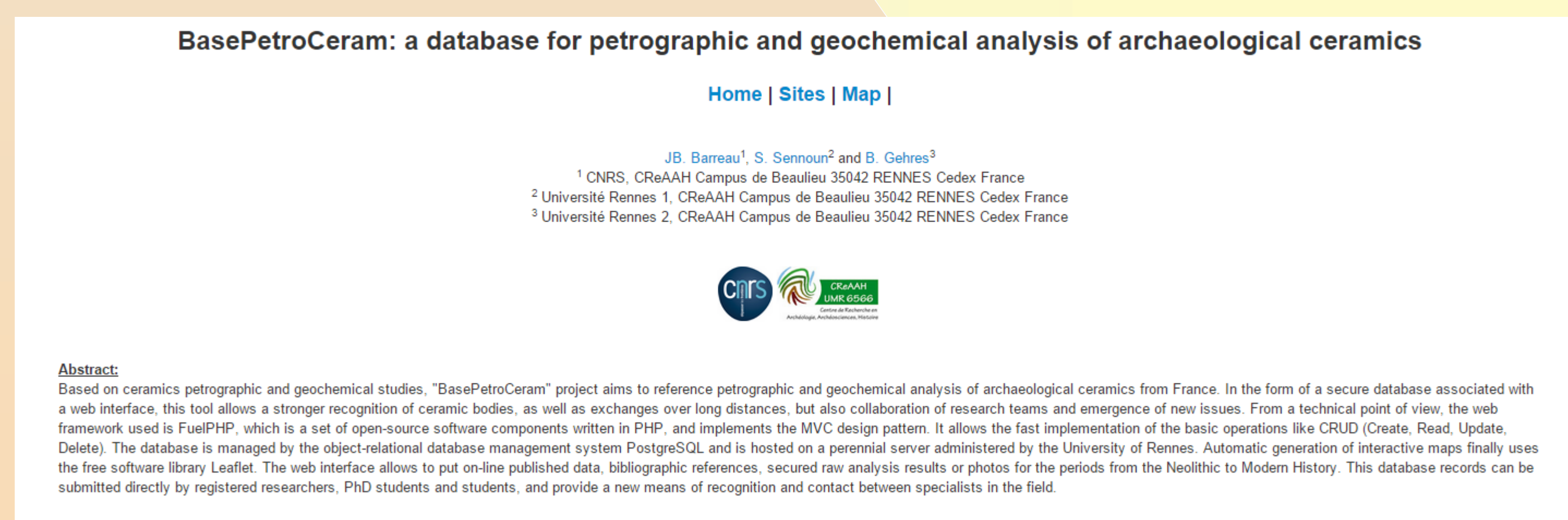
III/ TOOLS

Programming paradigms

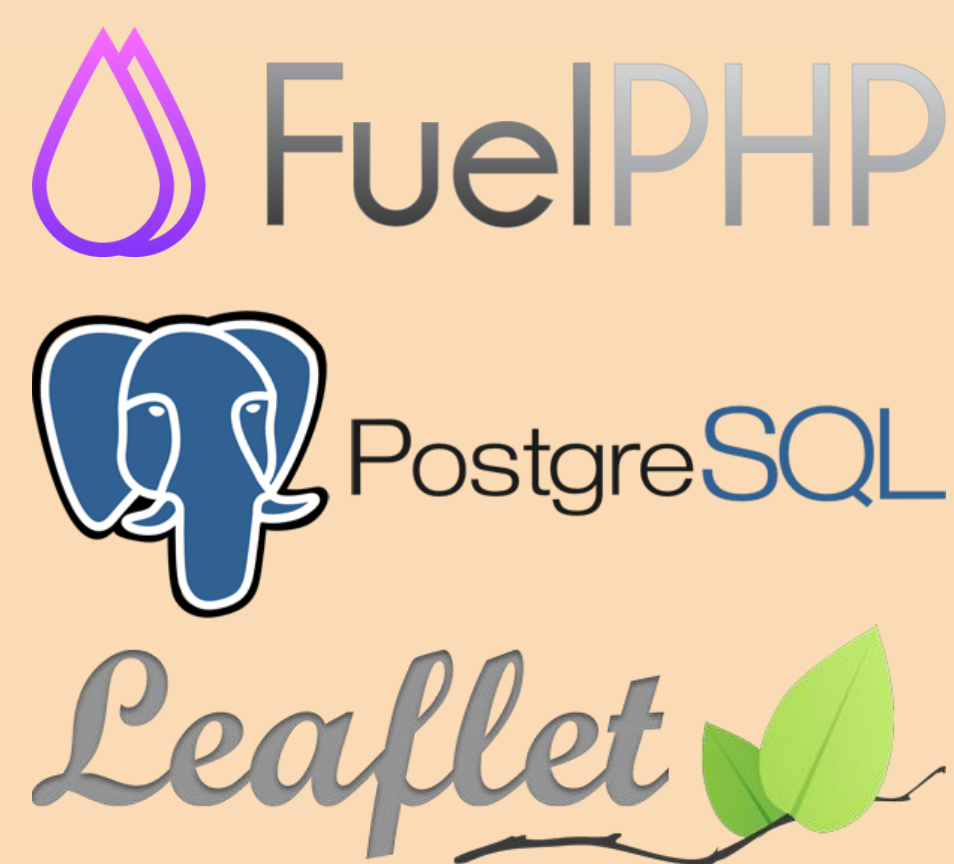


IV/ WEB INTERFACE

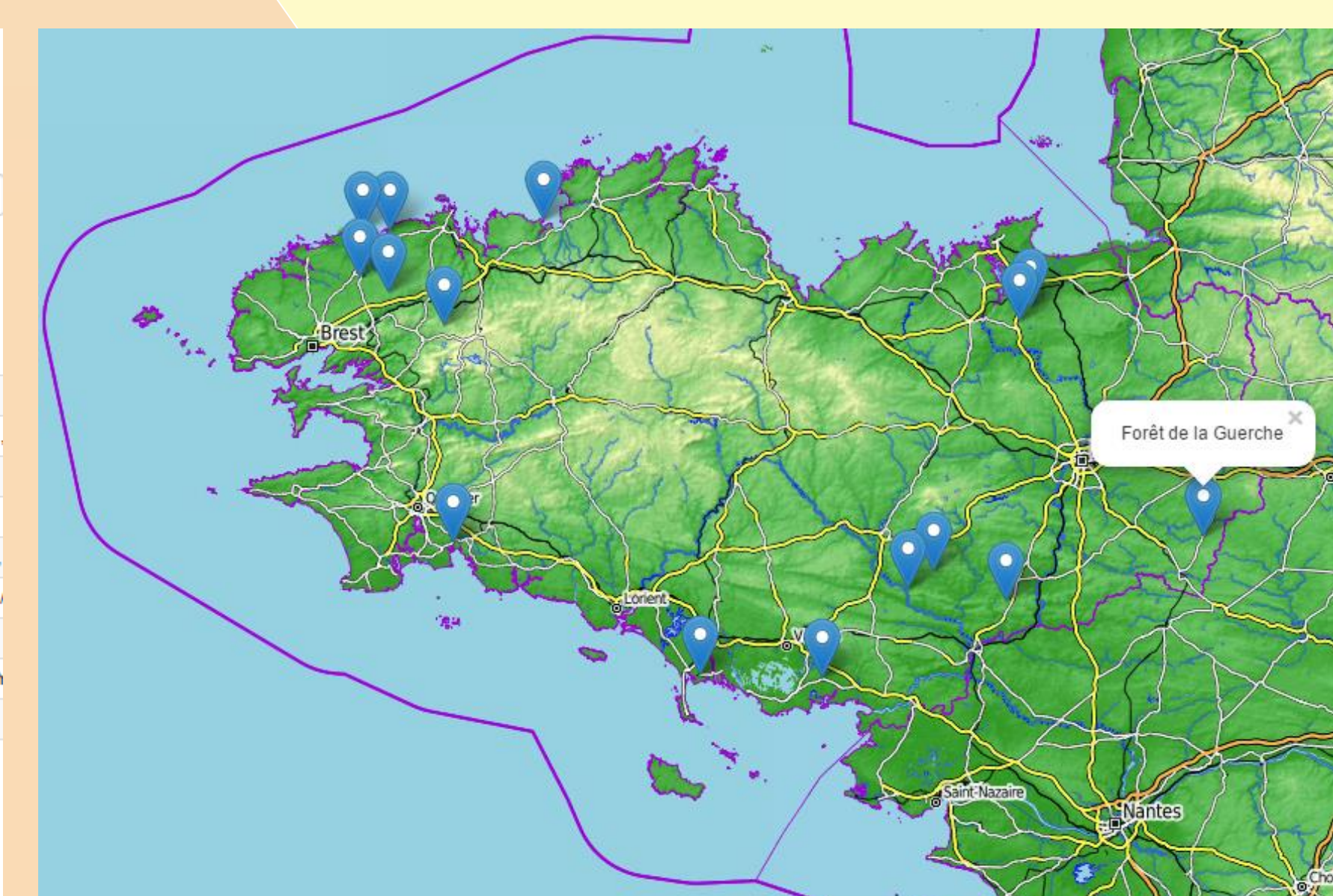
Showcase sandbox website <http://petroarchoe.olympie.in/public/>



Software



Zone	Site	Period	Bibliographic references
Tréal	Allée Couverte de Tréal	Neolithic	MORZADECH (1995) – Pétréo-archéologie des céramiques armoricaines du Néolithique à l'Age du Fer, Travaux du Laboratoire d'Anthropologie de Rennes /
Saint-Just	La Grée de Cojoux	Neolithic	MORZADECH (1995) – Pétréo-archéologie des céramiques armoricaines du Néolithique à l'Age du Fer, Travaux du Laboratoire d'Anthropologie de Rennes / HAMON G.
Plouescat	Pors Guen	Bronze Age	MORZADECH (1995) – Pétréo-archéologie des céramiques armoricaines du Néolithique à l'Age du Fer, Travaux du Laboratoire d'Anthropologie de Rennes /
La Forêt-Fousnant	Kerleven	Neolithic	MORZADECH (1995) – Pétréo-archéologie des céramiques armoricaines du Néolithique à l'Age du Fer, Travaux du Laboratoire d'Anthropologie de Rennes /
Saint-Laurent-sur-Oust	Beaumont	Neolithic	MORZADECH (1995) – Pétréo-archéologie des céramiques armoricaines du Néolithique à l'Age du Fer, Travaux du Laboratoire d'Anthropologie de Rennes / BRIARD J.
Camac	Le Castellac	Neolithic	COLAS C (1996) – Présence de céramiques à dégraisant osseux dans les régions de l'ouest de la France, Bulletin de la Société Préhistorique Française, T. 93, N° 4.
Plouézeur-Trez	La Lividic	Bronze Age	MORZADECH (1995) – Pétréo-archéologie des céramiques armoricaines du Néolithique à l'Age du Fer, Travaux du Laboratoire d'Anthropologie de Rennes /
Plouézeur	Kerdomnard	Bronze Age	MORZADECH (1995) – Pétréo-archéologie des céramiques armoricaines du Néolithique à l'Age du Fer, Travaux du Laboratoire d'Anthropologie de Rennes / DAIRE M.
Plouézeur-Lochist	Kerveret	Bronze Age	MORZADECH (1995) – Pétréo-archéologie des céramiques armoricaines du Néolithique à l'Age du Fer, Travaux du Laboratoire d'Anthropologie de Rennes /
Ploudaniel	Le Kemo	Bronze Age	MORZADECH (1995) – Pétréo-archéologie des céramiques armoricaines du Néolithique à l'Age du Fer, Travaux du Laboratoire d'Anthropologie de Rennes /



REFERENCES

- Quinn, P., Rout, D., Stringer, L., Alexander, T., Armstrong, A. and Olmstead, S. (2011). Petrodatabase: an on-line database for thin section ceramic petrography. *Journal of Archaeological Science*, 38(9), pp.2491-2496.
- Tweedie, R. (2013). *Learning FuelPHP for Effective PHP Development*. Packt Publishing Ltd.

ACKNOWLEDGEMENTS

The authors wish to warmly thank Sophie Sennoun, computer science student at the Université de Rennes 1, for the database creation and installation.

