



**HAL**  
open science

## A level set based model for damage growth: The thick level set approach

Nicolas Moes, Claude Stolz, Paul Emile Bernard, Nicolas Chevaugnon

► **To cite this version:**

Nicolas Moes, Claude Stolz, Paul Emile Bernard, Nicolas Chevaugnon. A level set based model for damage growth: The thick level set approach. *International Journal for Numerical Methods in Engineering*, 2011, 86 (3), pp.358-380. 10.1002/nme.3069 . hal-01517313

**HAL Id: hal-01517313**

**<https://hal.science/hal-01517313v1>**

Submitted on 3 May 2017

**HAL** is a multi-disciplinary open access archive for the deposit and dissemination of scientific research documents, whether they are published or not. The documents may come from teaching and research institutions in France or abroad, or from public or private research centers.

L'archive ouverte pluridisciplinaire **HAL**, est destinée au dépôt et à la diffusion de documents scientifiques de niveau recherche, publiés ou non, émanant des établissements d'enseignement et de recherche français ou étrangers, des laboratoires publics ou privés.



Distributed under a Creative Commons Attribution - NonCommercial 4.0 International License

# A level set based model for damage growth: The thick level set approach

N. Moës<sup>1</sup>, C. Stolz<sup>2</sup>, P.-E. Bernard<sup>1</sup> and N. Chevaugeon<sup>1</sup>

<sup>1</sup>*GeM Institute, École Centrale de Nantes/Université de Nantes/CNRS 1 Rue de la Noë, 44321 Nantes, France*

<sup>2</sup>*Laboratoire de Mécanique des Solides, CNRS UMR 7649, École Polytechnique, 91128 Palaiseau, France*

In this paper, we introduce a new way to model damage growth in solids. A level set is used to separate the undamaged zone from the damaged zone. In the damaged zone, the damage variable is an explicit function of the level set. This function is a parameter of the model. Beyond a critical length, we assume the material to be totally damaged, thus allowing a straightforward transition to fracture. The damage growth is expressed as a level set propagation. The configurational force driving the damage front is non-local in the sense that it averages information over the thickness in the wake of the front. The computational and theoretical advantages of the new damage model are stressed. Numerical examples demonstrate the capability of the new model to initiate cracks and propagate them even in complex topological patterns (branching and merging for instance).

KEY WORDS: level set; damage; X-FEM; fracture

## 1. INTRODUCTION

It is well known that fracture mechanics alone may not model the full scenario of the degradation of solids under mechanical loading. Crack initiation for instance requires damage mechanics to model the gradual loss of stiffness in a small area [1, 2]. When it comes to modelling damage, special care needs to be taken to avoid so-called spurious localizations. Several damage models were proposed in the literature to avoid spurious localization as detailed in [3, 4]:

- non-local integral damage model: the damage evolution is governed by a driving force which is non-local, i.e. it is the average of the local driving force over some regions [5, 6];
- higher order, kinematically based, gradient models through the inclusion of higher order deformation gradient [7–9] or additional rotational degrees of freedom [10];
- higher order, damage based, gradient models: the gradient of the damage is a variable as well as the damage itself. This leads to a second-order operator acting on the damage [11–13].

Non-local and higher order gradient approaches were compared in [14]. More recently two strategies to avoid spurious localization also appeared. The phase-field approach emanating from the physics community [15–17] and the so-called variational approach [18–20].

In this paper, we wish to model damage as a propagating level set front. Let us first tour the existing papers using a level set approach to model a degradation front. In report [21] a level

set is introduced to separate a totally damaged zone from an undamaged zone. The growth of the level is governed by a criterion: the front advances if the corresponding configurational force (called shape gradient by the authors) reaches a critical value, say  $Y_c$ . When no front is initially present, the authors suggest to use the topological derivative as the driving force and compare it with the critical value. We note that the model of [21] does not introduce a length and will most likely suffer pathological mesh-dependencies known in the computational mechanics community as spurious localization. This model will also most likely be unable to model a size-effect.

In the same spirit the evolution of the interface  $\Gamma$  separating sound material from damaged material has been studied in [22, 23] using an energetical description for the propagation. The driving force associated with the normal velocity of the front is a local release rate of energy. Using normality rule to govern the propagation, the rate boundary value problem in terms of displacement and motion of the interface is studied and conditions of existence and uniqueness are given.

In paper [24], Moës *et al.* use basically the same model as in [21], but with an important difference that a surface energy term is added. This added energy term was introduced by Nguyen *et al.* [25]. It is shown that this added energy contributes to stabilize the system so that no bifurcation is observed during the interface propagation. The configurational force on the interface must now reach the critical value  $Y_c + \gamma_c/\rho$  in which  $\rho$  is the radius of curvature of the interface and  $\gamma_c$  a critical surface energy. This avoids the creation of spikes on the interface since  $\rho$  will become very small and the criterion to meet very high. As a by-product, the model introduces the length scale  $l_c = \gamma_c/Y_c$ . The meaning of the length is however not clear at this time. The drawback of this curvature regularized model is that the energy to initiate a small hole is infinite since  $\rho = 0^+$  at void initiation. Without this critical surface energy nucleation of defects can also be considered as a bifurcation of equilibrium solution [26].

Somehow, one would like to use the criterion of [21] based on the topological derivative compared with  $Y_c$  to nucleate a void and then use the model [25] to evolve the void without spurious localizations. When should the switch take place is not a trivial question. Finally, in the material science community, note that paper [27] also introduces a level set technique to distinguish voids from matter. The growth criterion in the above paper is simply  $\gamma_c/\rho$ . The authors model nano crack patterns. Nothing is said in this paper regarding nucleation.

In [21, 27], the authors do not consider the damaged region to be totally damaged but do leave some stiffness in it. On the contrary, in [24] the front is modeled by the extended finite element method (X-FEM) allowing the damaged zone to be truly of zero stiffness. This avoids non-physical degradation behind the crack tip since the crack may now open freely. Still, from the numerical stand point, Moës *et al.* [24] introduced a proper method to evaluate the loading (indeed as damage progresses the load must usually decrease and snap-back may occur).

After this description of level set based damage front model, let us turn to the phase-field approach developed for fracture in the physics community [15–17]. On the contrary to the level based approach, there is no longer with the phase-field approach a strict boundary between one material phase (damaged) and the other one (fully damaged). A transition zone is present.

In the phase-field approach a parameter  $\phi$ , called phase, is introduced to describe the transition and varies from 0 (no damage) to 1 (total damage). A global phase equation coupled to the mechanical equations is solved in order to determine the phase value at each point in the domain. The phase-field equation involves a Laplacian of the phase that introduces a length scale and most likely kills spurious localization of the phase. This resolution is made over the whole domain. The damage is a given function of the phase field.

The goal of this paper is to introduce a new regularization for local damage models. The main idea is to keep the simplicity of the level set through a propagation algorithm while keeping in its wake a transition zone in which the material degrades over a given length. The advantage of dealing with damage represented by a level set is that it is well known that a level set propagation may be solved close only to the level set front.

Within the transition zone, damage is an explicit function of the level set. This function is a parameter of the model. Beyond a critical distance to the level set front the damage is assumed to be 1. In other words, as the front propagates it unveils in its wake a fully damaged zone. We call

this zone the crack (although we shall see it is not necessarily of zero thickness). This zone may be of very complex topology, thus dealing easily with branching and merging. In our approach, we thus do not need a transition to a cohesive crack to handle full degradation as in [28–30]. The crack appears as a consequence of the damage front motion. Finally, note that in the presented approach, the fully damaged zone is clearly delimited by a level set. It is thus not a set of elements similar to the element deletion approach [31]. Moreover, this zone is still allowed to carry compressive loading if needed.

## 2. A NEW LEVEL SET BASED DAMAGE MODEL

It is well known that purely local damage models suffer from spurious localization because no length scale is introduced in the models. In this paper, we introduce a length  $l_c$  in the wake of the front creating what we call a thick level set (TLS). The damage depends on a signed distance function to the front. This description induces a specific evolution law for the damage, the evolution follows the motion of the level set. The damage itself could be regarded as a level set, but to preserve the generality of the approach, we choose to separate the evolution of the geometry described by the level set and the associated value of damage.

In order to introduce the TLS approach we consider a simple damage model: an elasto-damage model with a scalar damage parameter.

### 2.1. A simple local damage model

The free energy per unit volume  $\varphi$  depends on the strain  $\epsilon$  and a scalar damage variable denoted by  $d$

$$\varphi = \varphi(\epsilon, d) \quad (1)$$

The state laws are obtained by differentiating the free energy

$$\boldsymbol{\sigma} = \frac{\partial \varphi}{\partial \epsilon}, \quad Y = -\frac{\partial \varphi}{\partial d} \quad (2)$$

where  $\boldsymbol{\sigma}$  is the stress and  $Y$  the local energy release rate. For instance, if we consider a symmetric behavior in traction and compression, we may use the potential

$$\varphi(\epsilon, d) = \frac{1}{2}(1-d) \epsilon : \mathbf{E} : \epsilon \quad (3)$$

leading to

$$\boldsymbol{\sigma} = (1-d) \mathbf{E} : \epsilon, \quad Y = \frac{1}{2} \epsilon : \mathbf{E} : \epsilon \quad (4)$$

A potential with closure effect will also be considered later in the numerical simulations. The evolution of the damage is given by a dissipation potential  $\psi^*(Y)$  which is a convex function of  $Y$ :

$$\dot{d} = \frac{\partial \psi^*(Y)}{\partial Y} \quad (5)$$

Alternatively, we may write

$$Y = \frac{\partial \psi(\dot{d})}{\partial \dot{d}} \quad (6)$$

The above potentials  $\psi(\dot{d})$  and  $\psi^*(Y)$  are dual and related by the Legendre–Fenchel transformation

$$\psi(\dot{d}) = \sup_Y (Y \dot{d} - \psi^*(Y)), \quad \psi^*(Y) = \sup_{\dot{d}} (Y \dot{d} - \psi(\dot{d})) \quad (7)$$

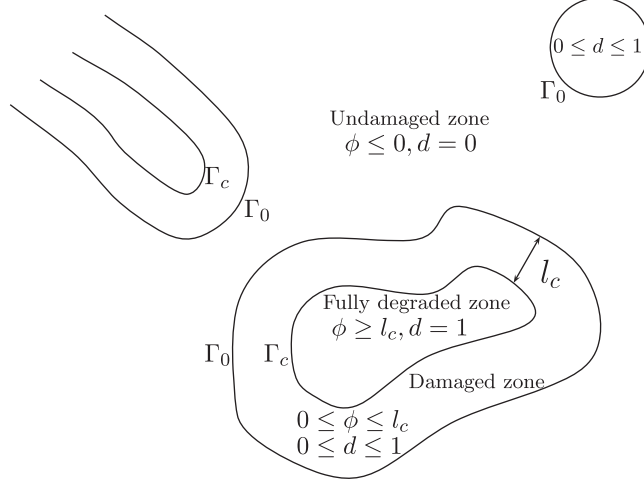


Figure 1. Multiple damaged, undamaged and transition zones are described using only one level set.

For non-regular functions, the definition of the gradient is replaced by the notion of sub-gradient  $Y \in \partial\psi(\dot{d})$  if

$$\psi(\dot{d}) + Y(d^* - \dot{d}) \leq \psi(d^*) \quad (8)$$

for all admissible  $d^*$ . A similar definition is associated to  $\psi^*$ .

Note that from the above we have the following inequality for any couple  $(Y, \dot{d})$  satisfying or not the damage evolution law

$$\psi^*(Y) + \psi(\dot{d}) - Y\dot{d} \geq 0 \quad (9)$$

The equality is satisfied if and only if the damage evolution law is satisfied too:

$$\psi^*(Y) + \psi(\dot{d}) - Y\dot{d} = 0 \Leftrightarrow \dot{d} = \frac{\partial\psi^*(Y)}{\partial Y} \Leftrightarrow Y = \frac{\partial\psi(\dot{d})}{\partial\dot{d}} \quad (10)$$

Note that the convexity of  $\psi$  or  $\psi^*$  ensure positive dissipation, this is due to (8) considering the properties

$$\psi(\dot{d}) \text{ convex, } \psi(\dot{d}) \geq 0, \quad \psi(0) = 0 \quad (11)$$

The damage model described above suffers from spurious localizations. To regularize this situation, we introduce a length scale in a different way than that proposed in the literature.

## 2.2. Free energy and state laws for the level set based damage model

The damage description is depicted in Figure 1. The level set  $\phi=0$  separates the domain  $\Omega$  into an undamaged zone and damaged one. In the damaged zone, the damage variable  $d$  is an explicit function of the level set. Note that a single level set is needed even if damaged zones are disconnected as shown in Figure 1.

The damage increases progressively as the level set value rises. Mathematically this is expressed by the following inequalities:

$$d(\phi) = 0, \quad \phi \leq 0 \quad (12)$$

$$d'(\phi) \geq 0, \quad 0 \leq \phi \leq l_c \quad (13)$$

$$d(\phi) = 1, \quad \phi \geq l_c \quad (14)$$

The function  $d = d(\phi)$  is assumed to be continuous for clarity. Discontinuous functions can be chosen in the proposed approach but the obtained expressions must be modified with additional contributions. At a distance  $l_c$  from the damage front, the material is assumed completely damaged. A spatial relationship between the damage value along the normal to the front  $\phi = 0$  is then deduced.

Consider a body  $\Omega$ . Along the external boundary  $\partial\Omega$ , loading  $T^d(t)$  is applied on  $\partial\Omega_T$  and displacements  $u^d(t)$  are prescribed on the complementary part  $\partial\Omega_u$ ;  $\partial\Omega = \partial\Omega_T \cup \partial\Omega_u$ ,  $\partial\Omega_T \cap \partial\Omega_u = \emptyset$ . Some parts of  $\Omega$  may be totally damaged i.e.  $d = 1$ . We denote by  $\Omega_c$ , the part of  $\Omega$  not fully damaged:

$$\Omega_c = \{\mathbf{x} \in \Omega : \phi(\mathbf{x}) \leq l_c\} \quad (15)$$

Potential energy is written as a function of the displacement field and the level set function  $\phi$ :

$$E(\mathbf{u}, \phi) = \int_{\Omega_c} \varphi(\boldsymbol{\epsilon}(\mathbf{u}), d(\phi)) d\Omega - \int_{\partial\Omega_T} \mathbf{T} \cdot \mathbf{u} dS \quad (16)$$

where  $\boldsymbol{\epsilon}(\mathbf{u})$  denotes the strain, i.e. symmetric part of the gradient of  $\mathbf{u}$ . The displacement field must satisfy the kinematic boundary conditions whereas the gradient of the level set field must be of norm 1 since it is a signed distance function.

The function  $d(\phi)$  is assumed to be continuous. The displacement, the free energy and the stress vector are then continuous functions along each iso- $\phi$  curve  $\Gamma_\phi$ . Otherwise, a more complex expression involving jump terms must be written. Along  $\Gamma_\phi$  the displacement is continuous, then  $[\mathbf{u}]_{\Gamma_\phi}(x, t) = 0$  for  $\mathbf{x}(t)$  on the moving surface  $\Gamma_\phi(t)$ . Then  $[\dot{\mathbf{u}}]_{\Gamma_\phi} + \dot{\mathbf{x}} \cdot [\nabla \mathbf{u}]_{\Gamma_\phi} = \mathbf{0}$ , where  $\dot{\mathbf{x}}$  is the velocity of  $\Gamma_\phi$ . Any variation of displacement and variation of  $\Gamma_\phi$  are linked by this equation of compatibility

$$[\delta \mathbf{u}]_{\Gamma_\phi} + \delta v_n \mathbf{n} \cdot [\nabla \mathbf{u}]_{\Gamma_\phi} = \mathbf{0} \quad (17)$$

But the continuity of  $d$  ensures the continuity of  $\varphi$ . The stress vector and displacement gradient are thus also continuous. Then no jumps exist along the moving surfaces. Then the variations of the displacement and the variations of the moving surface  $\Gamma_\phi$  are uncoupled.

The above conditions define the admissible set of variables  $A_d$

$$A_d = \{(\mathbf{u}, \phi) : \mathbf{u} \in A_d^u, \phi \in A_d^\phi\} \quad (18)$$

$$A_d^u = \{\mathbf{u} : \mathbf{u} \text{ defined on } \Omega_c, \mathbf{u} = \bar{\mathbf{u}} \text{ on } \partial\Omega_u\} \quad (19)$$

$$A_d^\phi = \{\phi : \|\nabla \phi\| = 1 \text{ on } \Omega\} \quad (20)$$

The set of admissible variations is then defined by

$$A_0 = \{(\delta \mathbf{u}, \delta \phi) : \delta \mathbf{u} \in A_0^u, \delta \phi \in A_0^\phi\} \quad (21)$$

$$A_0^u = \{\delta \mathbf{u} : \delta \mathbf{u} = 0 \text{ on } \partial\Omega_u\} \quad (22)$$

$$A_0^\phi = \{\delta \phi : \nabla \delta \phi \cdot \nabla \phi = 0 \text{ on } \Omega\} \quad (23)$$

The condition on  $\delta \phi$  indicates that to remain a signed distance the level set variation must be constant if we follow a path along the gradient of  $\phi$ . In order to visualize this property, let us consider a plane situation as depicted in Figure 2 with the band of material comprised between the boundaries  $\Gamma_0$  and  $\Gamma_c$ . This band may be parametrized by two curvilinear coordinates  $\phi$  and  $s$ , where  $s$  is the curvilinear abscissa along  $\Gamma_0$ . The iso-coordinate curves are orthogonal to each other. The condition (23) implies that  $\delta \phi$  is a function of  $s$  only and must be seen as a normal perturbation of the  $\Gamma$  front location. We may then write

$$\delta \phi = \delta a(s) \quad (24)$$

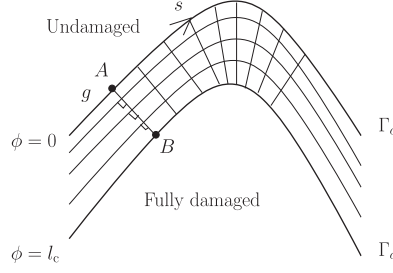


Figure 2. The curvilinear system of coordinates in the band. The front driving force  $g$  at A is defined as the weighted average of the local driving force over the path of the steepest descent  $AB$  following Equation (33).

Note that the level set  $\phi(x, t) = 0$  defines a surface of normal  $\mathbf{n}$  then the velocity of this surface is  $v_n$  such that

$$\frac{\partial \phi}{\partial t} + v_n \nabla \phi \cdot \mathbf{n} = 0 \quad (25)$$

Finally, note that in the curvilinear system of coordinates  $(\phi, s)$ , the surface element  $d\Omega$  is expressed as

$$d\Omega = \frac{\rho(\phi, s)}{\rho(0, s)} d\phi ds = \left(1 - \frac{\phi}{\rho(s)}\right) d\phi ds \quad (26)$$

where  $\rho(\phi, s)$  is the radius of curvature at  $(\phi, s)$  of the iso- $\phi$  curve. The last equality comes from the fact that the radius of curvature is linear along the iso- $\phi$  coordinates and we have used the shortened notation  $\rho(s) = \rho(0, s)$ . Equation (26) is well defined provided  $\phi$  is differentiable. In the 3D case, similar formula may be derived.

The directional derivative of the energy  $E$  with respect to  $(\delta \mathbf{u}, \delta a) \in A_0$  may now be computed. We take into account the state laws (2)

$$DE(\mathbf{u}, \phi)[(\delta \mathbf{u}, \delta a)] = \int_{\Omega_c} \boldsymbol{\sigma} : \boldsymbol{\epsilon}(\delta \mathbf{u}) d\Omega - \int_{\partial\Omega_T} \mathbf{T} \cdot \delta \mathbf{u} dS - \int_{\Omega} Y d'(\phi) \delta a d\Omega \quad (27)$$

Zeroing the directional derivative of the potential energy with respect to  $(\delta \mathbf{u}, 0) \in A_0^u$ , we obtain the equilibrium equation

$$DE(\mathbf{u}, \phi)[(\delta \mathbf{u}, 0)] = \int_{\Omega_c} \boldsymbol{\sigma} : \boldsymbol{\epsilon}(\delta \mathbf{u}) d\Omega - \int_{\partial\Omega_T} \mathbf{T} \cdot \delta \mathbf{u} dS = 0 \quad \forall \delta \mathbf{u} \in A_0^u \quad (28)$$

Let us now analyze the variation of the potential energy with respect to  $\phi$ . First, we note that  $d'(\phi)$  is only non-zero in the thick band  $\Omega_{oc}$  in which the level set varies from 0 to  $l_c$

$$\Omega_{oc} = \{\mathbf{x} \in \Omega : 0 \leq \phi(\mathbf{x}) \leq l_c\} \quad (29)$$

Variation of the potential energy with respect to  $\phi$  is reduced to:

$$DE(\mathbf{u}, \phi)[(0, \delta a)] = - \int_{\Omega_{oc}} Y d'(\phi) \delta a d\Omega \quad (30)$$

$$= - \int_{\Gamma_0} \int_0^{l_c} Y(\phi, s) d'(\phi) \delta a(s) (1 - \phi/\rho(s)) d\phi ds \quad (31)$$

$$= - \int_{\Gamma_0} g(s) \delta a(s) ds \quad (32)$$

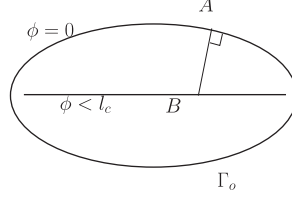


Figure 3. The damage band is not here fully developed, the maximum value of the level set is below  $l_c$  so that no fully damaged zone is present.

This relation defines the driving force associated with the moving band. The term is quite similar to the energy release rate introduced in [22, 23]. The term  $g(s)$  can also be interpreted as a configurational force per unit length on the front

$$g(s) = \int_0^l Y(\phi, s) d'(\phi) \left(1 - \frac{\phi}{\rho(s)}\right) d\phi \quad (33)$$

In the above,  $l$  is either  $l_c$  or some smaller values as illustrated in Figure 3. The configurational force (33) is an average of the local damage driving force  $Y$  weighted by  $d'(\phi)$  and the evolution of the front curvature along the thickness. Note that the equality (33) bears some similarity with the transition from damage to fracture as proposed in [32], whereas here it is relating diffuse damage to a degradation front advance.

Finally, let us compute the dissipation. To do so, the virtual front advance  $\delta a$  is replaced by the true front velocity  $v_n$ . And therefore the dissipation reduces to:

$$D = -\frac{dE(\mathbf{u}, \phi)}{dt} + \int_{\partial\Omega_T} \mathbf{T} \cdot \dot{\mathbf{u}} dS = \int_{\Omega_{oc}} Y \dot{d} d\Omega = \int_{\Gamma_0} g v_n ds \quad (34)$$

The last equation defines the global dissipation in terms of an energy release rate along a moving surface. The link between this global formulation and the local variables  $Y, \dot{d}$  inside the front is essentially due to Equation (25).

### 2.3. Dissipation potentials and evolution laws

We now need to provide the evolution law relating the front speed  $v_n$  to the configurational force  $g$ . Either we give this relationship in a phenomenological way prescribing directly a relation between  $v_n$  and  $g$  or we somehow homogenize the local damage evolution law (5). For this, we can use the notion of a shock-generating function introduced in [33, 34] for an elastic continuum and hence we obtain a global constitutive relation as in plasticity [35].

We propose here to satisfy as much as possible (5) while fulfilling the constraint

$$\dot{d} = d'(\phi) v_n \quad (35)$$

This relation is defined for any distribution  $v_n$  along  $\Gamma_0$ . In general situation, we cannot fulfill at every point the local damage evolution law since for a given  $Y$  field, the damage evolution given by (5) will not satisfy the damage constraint (35). We also note from Equation (35) that the front velocity must be positive at all time and all point on the front to prevent a reduction in damage.

Given a field  $Y$ , we thus minimize the expression below

$$\inf_{\dot{d}=d'(\phi)v_n} \int_{\Omega_c} \psi^*(Y) + \psi(\dot{d}) - Y \dot{d} d\Omega = \inf_{v_n} \int_{\Omega_c} \psi^*(Y) + \psi(d'(\phi)v_n) - Y d'(\phi)v_n d\Omega \quad (36)$$

which may be interpreted as the error on the local constitutive law. The value of the infimum will not be zero and somehow measures the effect of homogenizing the evolution law over the



band thickness. Noticing that  $v_n$  is present in the last two terms of (36) the search of the infimum reads as

$$\inf_{v_n} \int_{\Omega_c} \psi(d'(\phi)v_n) - Y d'(\phi)v_n \, d\Omega \quad (37)$$

The above integral may be limited to  $\Omega_{oc}$ . Using (32) we may also write

$$\int_{\Omega_{oc}} Y d'(\phi)v_n \, d\Omega = \int_{\Gamma_0} g v_n \, ds \quad (38)$$

and we define the homogenized potential  $\bar{\psi}$  through

$$\int_{\Gamma_0} \bar{\psi}(v_n, s) \, ds = \int_{\Omega_c} \psi(d'(\phi)v_n) \, d\Omega \quad (39)$$

Note that the homogenized potential expression  $\bar{\psi}$  depends explicitly on the location on the front. This potential is defined for any distribution  $v_n$  given along  $\Gamma_0$ . It thus ensures a local definition of the potential at point  $s$ :

$$\bar{\psi} = \int_0^l \psi(d'(\phi)v_n) \left(1 - \frac{\phi}{\rho(s)}\right) \, d\phi \quad (40)$$

The infimum (37) is now

$$\inf_{v_n} \int_{\Gamma} \bar{\psi}(v_n, s) - g v_n \, ds = \sup_{v_n} \int_{\Gamma} g v_n - \bar{\psi}(v_n, s) \, ds = \int_{\Gamma} \bar{\psi}^*(g, s) \, ds \quad (41)$$

where the dual potential  $\bar{\psi}^*$  is obtained through the Legendre–Fenchel transformation of  $\bar{\psi}$ . The local damage evolution law (10) has been homogenized into a non-local evolution law

$$v_n = \frac{\partial \bar{\psi}^*(g, s)}{\partial g} \Leftrightarrow g = \frac{\partial \bar{\psi}(v_n, s)}{\partial v_n} \Leftrightarrow \bar{\psi}^*(g, s) + \bar{\psi}(v_n, s) - g v_n = 0 \quad (42)$$

Note that through the homogenization process, the properties of the local potential (11) are preserved at the homogenized level. The following properties are satisfied at any point on  $\Gamma_0$

$$\bar{\psi}(v_n) \text{ convex}, \quad \bar{\psi}(v_n) \geq 0, \quad \bar{\psi}(0) = 0 \quad (43)$$

ensuring the positivity of the dissipation  $g v_n$  along the front. This automatic preservation of duality when creating the non-local model is an advantage over classical non-local models [36].

*A typical case.* Let us apply this procedure to a power law-type damage evolution law with threshold

$$\dot{d} = k \left\langle \frac{Y}{Y_c} - 1 \right\rangle_+^n, \quad n > 0, \quad k > 0, \quad Y_c > 0 \quad (44)$$

with the positive  $\langle \cdot \rangle_+$  (negative  $\langle \cdot \rangle_-$ ) part of a scalar following the usual definition

$$\langle a \rangle_+ = (a + |a|)/2, \quad \langle a \rangle_- = (a - |a|)/2 \quad (45)$$

The corresponding potentials are

$$\psi^*(Y) = \frac{k Y_c}{n+1} \left\langle \frac{Y}{Y_c} - 1 \right\rangle_+^{n+1} \quad (46)$$

$$\psi(\dot{d}) = Y_c \dot{d} + \frac{k Y_c}{n'+1} \left( \frac{\dot{d}}{k} \right)^{n'+1} + I_+(\dot{d}) \quad (47)$$

where  $n' = 1/n$  and  $I_+$  is the indicator function of  $R^+$

$$I_+(x) = 0 \quad \text{if } x \geq 0 \quad \text{and} \quad +\infty \quad \text{otherwise} \quad (48)$$

The homogenized potential is given by (39)

$$\int_{\Gamma} \bar{\psi}(v_n, s) ds = \int_{\Omega_{oc}} Y_c d' v_n + \frac{k Y_c}{n'+1} \left( \frac{d' v_n}{k} \right)^{n'+1} + I_+(d' v_n) d\Omega \quad (49)$$

$$= \int_{\Gamma_0} \bar{Y}_c(s) v_n + \frac{\bar{k}(s) \bar{Y}_c(s)}{n'+1} \left( \frac{v_n}{\bar{k}(s)} \right)^{n'+1} + I_+(v_n) ds \quad (50)$$

where

$$\bar{Y}_c(s) = Y_c \int_0^l d'(\phi) \left( 1 - \frac{\phi}{\rho(s)} \right) d\phi \quad (51)$$

$$\bar{k}(s) = k \left( \frac{\int_0^l d'(\phi) \left( 1 - \frac{\phi}{\rho(s)} \right) d\phi}{\int_0^l (d'(\phi))^{n'+1} \left( 1 - \frac{\phi}{\rho(s)} \right) d\phi} \right)^n \quad (52)$$

The dual potentials and the corresponding evolution law are

$$\bar{\psi}(v_n, s) = \bar{Y}_c(s) v_n + \frac{\bar{k}(s) \bar{Y}_c(s)}{n'+1} \left( \frac{v_n}{\bar{k}(s)} \right)^{n'+1} + I_+(v_n) \quad (53)$$

$$= \bar{\psi}_r(v_n, s) + I_+(v_n) \quad (54)$$

$$\bar{\psi}^*(g, s) = \frac{\bar{k}(s) \bar{Y}_c(s)}{n+1} \left\langle \frac{g}{\bar{Y}_c(s)} - 1 \right\rangle_+^{n+1} \quad (55)$$

$$v_n = \bar{k}(s) \left\langle \frac{g}{\bar{Y}_c(s)} - 1 \right\rangle_+^n \quad (56)$$

where we did denote  $\bar{\psi}_r$  as part of  $\bar{\psi}$  which may be differentiated in the classical sense. Note that in practice, as it will be seen in the numerical implementation, it is not necessary to obtain the analytical global potentials  $\bar{\psi}$ .

#### 2.4. Advantages of the proposed approach

- Compared with non-local approaches in which the duality may be corrupted [36], the proposed approach is thermodynamically sound.
- Although the approach is non-local the specific numerical treatment for non-locality is limited to a band.
- The scenario of the damage variable getting to 1 is included in the model.
- The criterion is maximum at the tip of a crack and not a little away from it as in classical non-local approach [37].
- The issue of the proper boundary conditions in the gradient type is removed. Also, the displacement field is no longer forced to be extra smooth as in the higher order displacement gradient models.

#### 2.5. Relationship with fracture mechanics

Let us now consider that the damage front has a shape depicted in Figure 4 and that it progresses so that it keeps its shape with a speed  $\dot{a}$ . This means that the normal velocity on the front is

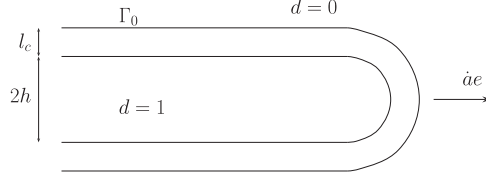


Figure 4. A damage front progressing in a stationary fashion.

given by

$$v_n = \dot{a} \mathbf{e} \cdot \mathbf{n} \quad (57)$$

where  $\mathbf{n}$  is the outer normal to the front and  $\mathbf{e}$  the crack direction. Substituting this representation of  $v_n$  into (53), (55), (56), we get the following potentials:

$$\Psi(\dot{a}) = G_c \dot{a} + \frac{K G_c}{n'+1} \left( \frac{\dot{a}}{K} \right)^{n'+1} + I_+(\dot{a}) \quad (58)$$

$$\Psi^*(G) = \frac{K G_c}{n+1} \left\langle \frac{G}{G_c} - 1 \right\rangle_+^{n+1} \quad (59)$$

$$\dot{a} = K \left\langle \frac{G}{G_c} - 1 \right\rangle_+^n \quad (60)$$

where

$$G = \int_{\Gamma_0} g \mathbf{e} \cdot \mathbf{n} ds \quad (61)$$

$$G_c = \int_{\Gamma_0} \bar{Y}_c \mathbf{e} \cdot \mathbf{n} ds \quad (62)$$

$$K = \left( \frac{\int_{\Gamma_0} \bar{Y}_c \mathbf{e} \cdot \mathbf{n} ds}{\int_{\Gamma_0} \bar{k}^{-n'} \bar{Y}_c (\mathbf{e} \cdot \mathbf{n})^{n'+1} ds} \right)^n \quad (63)$$

To better see the relationship between damage parameters ( $Y_c, l_c, k$ ) and fracture mechanics parameters ( $G_c, K$ ), let us consider the particular case of a circular damage front and a linear damage to level set relationship. In this case, we get

$$G_c = Y_c (h + l_c) \quad (64)$$

$$K = k l_c \left( \frac{2}{\int_{-\pi/2}^{\pi/2} (\cos \theta)^{n'+1} d\theta} \right)^n \quad (65)$$

### 3. SPACE AND TIME DISCRETIZATION

In this section, we consider only one front  $\Gamma_0$ . In the presence of multiple, disconnected fronts  $i$ , the same procedure is performed for each individual front  $\Gamma_0^i$ .

Regarding the space discretization, we use the X-FEM. This method is well known to handle cracks [38, 39] without explicit meshing of the crack. The X-FEM may also handle voids [40] and it is this feature that we will be using to model completely damaged zones. Thus, the boundary  $\Gamma_c$  does not need to be meshed explicitly. For a given location of the damage front, once the mechanical fields are evaluated, we need to compute the front velocity. We shall look for the

velocity on the front as a combination of modes:

$$v_n = \sum_{I=1}^N v_{nI} F_I \quad (66)$$

The modes  $F_I$  are explicit functions of  $s$  initially defined on the front  $\Gamma_0$ , then extended through the band  $\Omega_{oc}$ . The extension is performed just as a velocity is extended from the iso-zero of the level set when dealing with the level set equation [41, 42].

In order to find the velocity coefficients, the discretized expression of the velocity is introduced in (37)

$$\inf_{v_n} \int_{\Omega_{oc}} \psi(d'(\phi)v_n) - Y d'(\phi)v_n \, d\Omega \quad (67)$$

The integration is restricted over  $\Omega_{oc}$  since outside this band  $d'(\phi)=0$ . In the minimization, the velocity  $v_n$  must be positive. If the velocity is not positive the potential  $\psi$  is infinite. In order to impose the positivity of the velocity, introduction of a Lagrange multiplier  $\lambda$  is useful.

$$\inf_{v_n} \sup_{\lambda \leq 0} \int_{\Omega_c} \psi_r(d'(\phi)v_n) - Y d'(\phi)v_n + \lambda d'(\phi)v_n \, d\Omega \quad (68)$$

where  $\psi_r$  is the regular part of the potential  $\psi$  which is no longer infinite when the velocity is negative. Note that in the above equation, the  $\lambda$  term also involves the gradient of the damage. This is important if we do not want to loose the constraint of positive velocity as  $l_c$  goes to zero. The interpretation of the Lagrange multiplier is as follows: it will be zero in zones where the front is moving and related to the gap  $Y_c - Y$  in areas where it is not moving.

Finally, in order to remove the constraint  $\lambda \leq 0$  in (68) the trick, introduced for contact by Ben Dhia *et al.* [43], is to write

$$\inf_{v_n} \sup_{\lambda} \int_{\Omega_{oc}} \psi_r(d'(\phi)v_n) - Y d'(\phi)v_n + \frac{d'(\phi)}{2\beta} (\lambda + \beta v_n)_-^2 - \frac{d'(\phi)}{2\beta} \lambda^2 \, d\Omega \quad (69)$$

where  $\beta > 0$  is a parameter that does not affect the solution. Differentiating with respect to  $v_n$  and  $\lambda$ , we get

$$\int_{\Omega_{oc}} \left( \frac{\partial \psi_r(d'(\phi)v_n)}{\partial v_n} + \beta \chi d'(\phi)v_n \right) \delta v_n + \chi d'(\phi) \lambda \delta v_n \, d\Omega = \int_{\Omega_{oc}} Y d'(\phi) \delta v_n \, d\Omega \quad \forall \delta v_n \quad (70)$$

$$\int_{\Omega_{oc}} \chi d'(\phi)v_n \delta \lambda + (\chi - 1) d'(\phi) \frac{\lambda}{\beta} \delta \lambda \, d\Omega = 0 \quad \forall \delta \lambda \quad (71)$$

in which we did use the notation

$$\chi = \chi(\lambda, v_n) = 0 \quad \text{if } \lambda + \beta v_n \geq 0 \quad (72)$$

$$\chi = \chi(\lambda, v_n) = 1 \quad \text{if } \lambda + \beta v_n < 0 \quad (73)$$

This system may be solved using a Newton–Raphson technique. Two non-linearities appear. One coming from the constitutive law  $\psi_r$  and the second coming from the contact condition  $\chi$ . It was shown in [43, 44] that solving one difficulty at a time was efficient. Basically, there are two embedded loops in the Newton–Raphson procedure.

We now discretize

$$\begin{aligned} v_n &= \sum_{I=1}^N v_{nI} F_I, & \delta v_n &= \sum_{I=1}^N \delta v_{nI} F_I \\ \lambda &= \sum_{I=1}^N \lambda_I F_I, & \delta \lambda &= \sum_{I=1}^N \delta \lambda_I F_I \end{aligned} \quad (74)$$

where the modes  $F_I$  depend only on the curvilinear abscissa  $s$

$$\begin{bmatrix} K^i + \beta C^0 & C^0 \\ C^{0T} & \frac{C^0 - M}{\beta} \end{bmatrix} \begin{bmatrix} \Delta v_n \\ \Delta \lambda \end{bmatrix} = \begin{bmatrix} R^i \\ S^i \end{bmatrix} \quad (75)$$

$$K_{IJ}^i = \int_{\Omega_{oc}} \frac{\partial^2 \psi_r(d'(\phi)v_n^i)}{\partial^2 v_n} F_I F_J d\Omega \quad (76)$$

$$C_{IJ}^0 = \int_{\Omega_{oc}} \chi^0 d'(\phi) F_I F_J d\Omega \quad (77)$$

$$M_{IJ} = \int_{\Omega_{oc}} d'(\phi) F_I F_J d\Omega \quad (78)$$

$$R_I^i = \int_{\Omega_{oc}} \left( -\frac{\partial \psi_r(d'(\phi)v_n^i)}{\partial v_n} + Y d'(\phi) + \chi^0 d'(\phi)(\lambda^i + \beta v_n^i) \right) F_I d\Omega \quad (79)$$

$$S_I^i = \int_{\Omega_{oc}} d'(\phi)(\chi^0(\lambda^i/\beta + v_n^i) - \lambda^i/\beta) F_I d\Omega \quad (80)$$

where  $\chi^0 = \chi(\lambda^0, v_n^0)$ . We note that the velocity computation on the front does not require an explicit computation of the configurational forces on the front.

Regarding the loading, different types of control may be used. In the numerical experiments we did use a crack mouth opening displacement (CMOD) for the three-point bending test and a dissipation control-type algorithm for the other experiments. For the dissipation control algorithm we were inspired by the work of Verhoosel *et al.* [45]. In our case, the dissipation reads as

$$D = \int_{\Omega_{oc}} Y d'(\phi) v_n d\Omega \quad (81)$$

It is tempting to impose the value of  $D$  by some prescribed constants. Unfortunately at initiation, the left term goes to zero and the equality may only be satisfied for infinite loading. Hence, we introduce a given parameter  $\gamma$  and we take into account the volume of the damaged zone by the constraint

$$\int_{\Omega_{oc}} Y d'(\phi) v_n d\Omega = \int_{\Omega_{oc}} \gamma d'(\phi) d\Omega \quad (82)$$

This constraint is imposed through a Lagrange multiplier  $v$ . Taking into account the dissipation constraint, the inf-sup principle (69) now reads as

$$\inf_{v_n} \sup_{\lambda} \sup_v \int_{\Omega_{oc}} \psi_r(d'(\phi)v_n) + \frac{d'(\phi)}{2\beta} (\lambda + \beta v_n)^2 - \frac{d'(\phi)}{2\beta} \lambda^2 - v Y_0 d'(\phi) v_n + \log v \gamma d'(\phi) d\Omega \quad (83)$$

where  $Y_0$  is the value of  $Y$  for a unit loading. It may be observed in the above that the meaning of the Lagrange parameter  $v$  is simply the square of the loading. The corresponding Newton-Raphson iteration is given below

$$\begin{bmatrix} K^i + \beta C^0 & C^0 & D \\ C^{0T} & \frac{C^0 - M}{\beta} & 0 \\ D^T & 0 & E^i \end{bmatrix} \begin{bmatrix} \Delta v_n \\ \Delta \lambda \\ \Delta v \end{bmatrix} = \begin{bmatrix} R^i \\ S^i \\ T^i \end{bmatrix} \quad (84)$$

$$D_I = \int_{\Omega_{oc}} Y_0 d'(\phi) F_I \, d\Omega \quad (85)$$

$$E^i = - \int_{\Omega_{oc}} \frac{\gamma d'(\phi)}{v^i} \, d\Omega \quad (86)$$

$$T^i = \int_{\Omega_{oc}} \left( Y_0 d'(\phi) v_n^i - \frac{\gamma d'(\phi)}{v^i} \right) \, d\Omega \quad (87)$$

Once the normal velocity of the level set is known, the level set may be updated using classical level set approaches [41, 42].

#### 4. NUMERICAL SIMULATIONS FOR SEVERAL 2D CASES

In order to take into account more general loading cases and the closure effect in the fully damaged zone, we consider an asymmetric tension/compression damage potential with a scalar damage variable. We have considered a strain-based model. Other types of models involving closure effects may be found in [46]

$$\varphi(\epsilon, d) = \mu(1-d)\langle\epsilon\rangle_+ : \langle\epsilon\rangle_+ + \mu(1-hd)\langle\epsilon\rangle_- : \langle\epsilon\rangle_- + \frac{\lambda}{2}(1-d)\langle Tr\epsilon\rangle_+^2 + \frac{\lambda}{2}(1-hd)\langle Tr\epsilon\rangle_-^2 \quad (88)$$

where  $\lambda$  and  $\mu$  are the Lamé elastic coefficients and  $h \leq 1$ . The positive (negative) part of the tensor is applied to its spectral decomposition

$$\langle\epsilon\rangle_+ = \sum_{i=1}^3 \langle\epsilon_i\rangle_+ \mathbf{e}_i \otimes \mathbf{e}_i \quad (89)$$

$$\langle\epsilon\rangle_- = \sum_{i=1}^3 \langle\epsilon_i\rangle_- \mathbf{e}_i \otimes \mathbf{e}_i \quad (90)$$

where  $\epsilon_i, i = 1, 2, 3$ , are the eigenvalues of the strain tensor and  $\mathbf{e}_i, i = 1, 2, 3$ , the eigenvectors. The potential is expressed as follows using the eigenvalues (and plane strain assumption  $\epsilon_3 = 0$ )

$$\varphi(\epsilon, d) = \frac{E}{2(1+\nu)} ((1-\alpha_1 d)\epsilon_1^2 + (1-\alpha_2 d)\epsilon_2^2) + \frac{\nu E(1-\alpha d)}{2(1-2\nu)(1+\nu)} (\epsilon_1 + \epsilon_2)^2 \quad (91)$$

with

$$\begin{aligned} \alpha_i &= h & \text{if } \epsilon_i < 0 \\ &1 & \text{if } \epsilon_i \geq 0 \\ \alpha &= h & \text{if } \epsilon_1 + \epsilon_2 < 0 \\ &1 & \text{if } \epsilon_1 + \epsilon_2 \geq 0 \end{aligned}$$

One can easily show that the eigenvectors of the stress and strain tensors coincide. The eigen stresses are obtained from the eigen strains by differentiating (91)

$$\begin{pmatrix} \sigma_1 \\ \sigma_2 \end{pmatrix} = \frac{E}{1+\nu} \underbrace{\begin{pmatrix} (1-\alpha_1 d) + \gamma(1-\alpha d) & \gamma(1-\alpha d) \\ \gamma(1-\alpha d) & (1-\alpha_2 d) + \gamma(1-\alpha d) \end{pmatrix}}_L \begin{pmatrix} \epsilon_1 \\ \epsilon_2 \end{pmatrix} \quad (92)$$

Storing the two eigen stresses in  $\tilde{\boldsymbol{\sigma}}$  and the two eigen strains in  $\tilde{\boldsymbol{\epsilon}}$

$$\tilde{\boldsymbol{\sigma}} = L \tilde{\boldsymbol{\epsilon}} \quad (93)$$

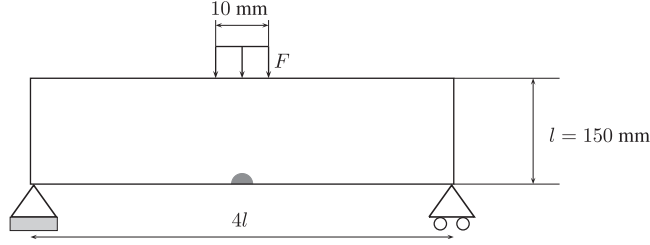


Figure 5. Three-point bending test case configuration.

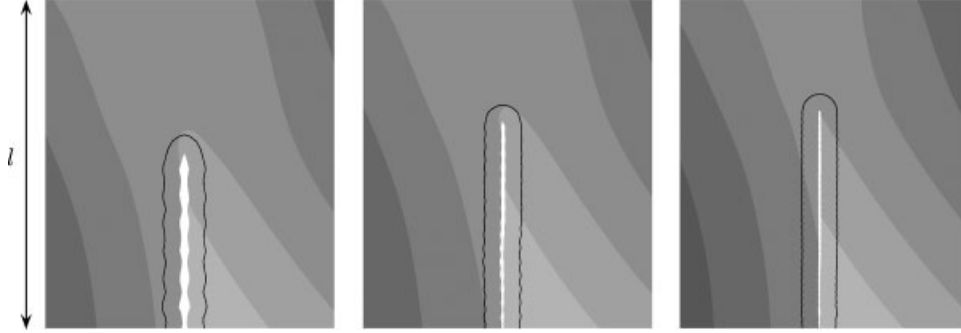


Figure 6. Close-up views of the damage zones at  $t = 103.25$  s for the three grid refinement levels. The white zone indicates the fully damaged area (level set value above  $l_c$ ), whereas the black line is the damage front.

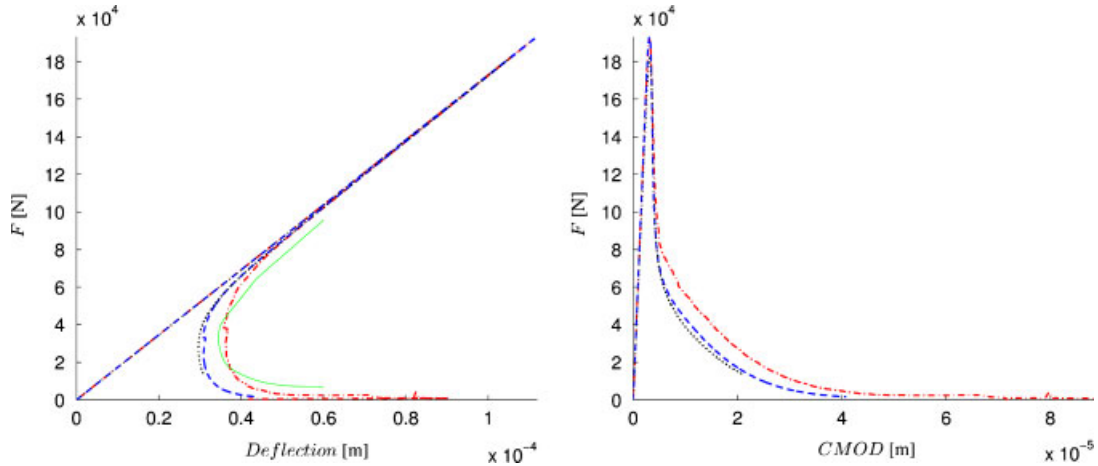


Figure 7. Load–displacement curves for the three-point bending test using three different grid refinement levels (dash-dotted line for the coarser mesh, dashed line for the intermediate mesh, dotted line for the finer mesh and continuous line for the experimental data). The displacements are the deflection on the loading point (left) and the CMOD (right).

It is important for the Newton–Raphson algorithm to compute also the tangent stiffness. First, we note that the stress is the derivative of the potential

$$\boldsymbol{\sigma} = \frac{\partial \varphi}{\partial \boldsymbol{\epsilon}} = \frac{\partial \varphi}{\partial \tilde{\boldsymbol{\epsilon}}} \frac{\partial \tilde{\boldsymbol{\epsilon}}}{\partial \boldsymbol{\epsilon}} = \tilde{\boldsymbol{\epsilon}}^T \mathbf{L} \frac{\partial \tilde{\boldsymbol{\epsilon}}}{\partial \boldsymbol{\epsilon}} \quad (94)$$

$$\mathbf{H} = \frac{\partial \boldsymbol{\sigma}}{\partial \boldsymbol{\epsilon}} = \left( \frac{\partial \tilde{\boldsymbol{\epsilon}}}{\partial \boldsymbol{\epsilon}} \right)^T \mathbf{L} \frac{\partial \tilde{\boldsymbol{\epsilon}}}{\partial \boldsymbol{\epsilon}} + \tilde{\boldsymbol{\epsilon}}^T \mathbf{L} \frac{\partial^2 \tilde{\boldsymbol{\epsilon}}}{\partial \boldsymbol{\epsilon}^2} \quad (95)$$

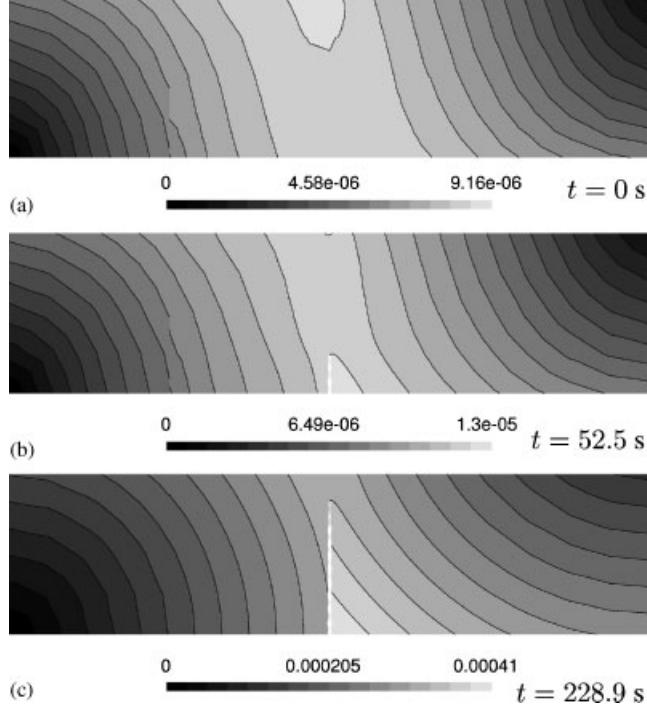


Figure 8. Time evolution of the norm of the displacement field.

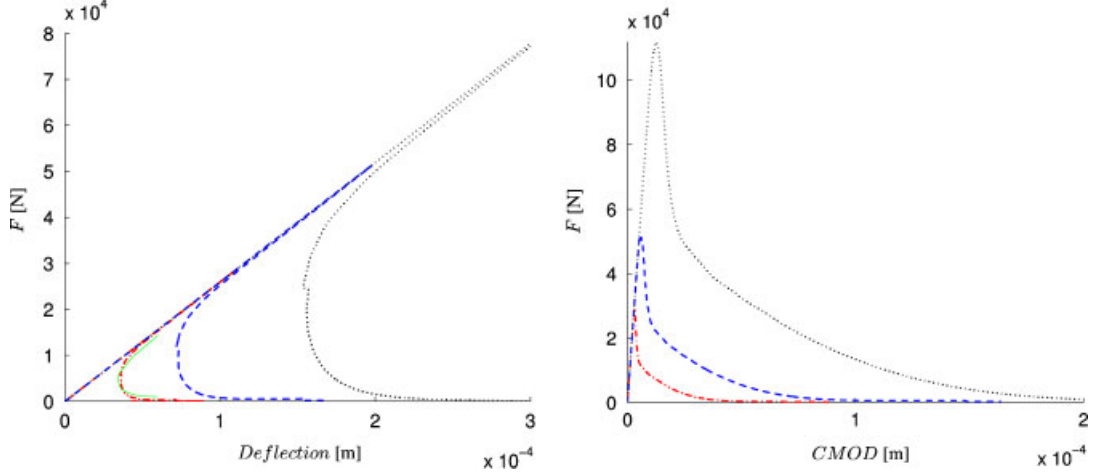


Figure 9. Load–displacement curves for the three-point bending test using values of  $k=2.5 \times 10^{-2} \text{ s}^{-1}$  (dashed-dotted),  $k=2.5 \times 10^{-3} \text{ s}^{-1}$  (dashed) and  $k=2.5 \times 10^{-4} \text{ s}^{-1}$  (dotted). The displacements are the deflection on the loading point (left) and the CMOD (right).

$$= \left( \frac{\partial \tilde{\epsilon}}{\partial \epsilon} \right)^T \mathbf{L} \frac{\partial \tilde{\epsilon}}{\partial \epsilon} + \sigma_1 \frac{\partial^2 \epsilon_1}{\partial \epsilon^2} + \sigma_2 \frac{\partial^2 \epsilon_2}{\partial \epsilon^2} \quad (96)$$

finally, the local energy release  $Y$  is given by

$$Y = \frac{E}{2(1+\nu)} ((\alpha_1 + \gamma\alpha)\epsilon_1^2 + (\alpha_2 + \gamma\alpha)\epsilon_2^2 + 2\gamma\alpha\epsilon_1\epsilon_2) \quad (97)$$



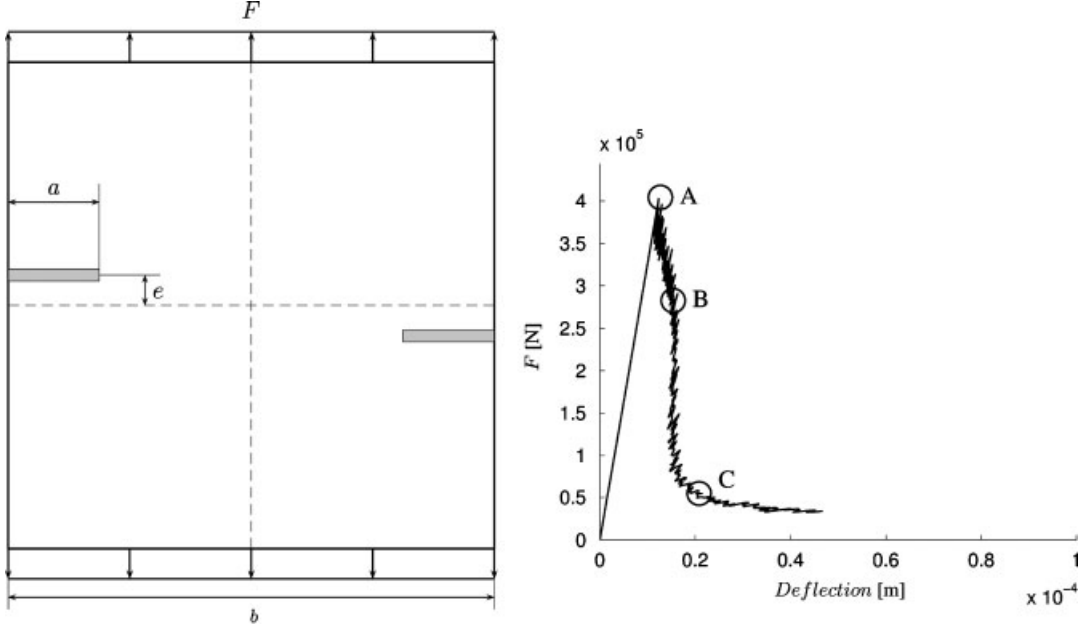


Figure 10. Initial configuration for the crack coalescence test case and load–displacement curve.

with  $\gamma = \nu/(1-2\nu)$ . The first- and second-order derivatives in (96) are given by

$$\frac{\partial \tilde{\epsilon}}{\partial \epsilon} = \frac{1}{2} \begin{bmatrix} 1 + \cos \theta & 1 - \cos \theta & \sin \theta \\ 1 - \cos \theta & 1 + \cos \theta & -\sin \theta \end{bmatrix} \quad (98)$$

$$\frac{\partial^2 \epsilon_1}{\partial \epsilon^2} = \frac{1}{2r} \begin{bmatrix} 1 - \cos^2 \theta & -1 + \cos^2 \theta & -\sin \theta \cos \theta \\ -1 + \cos^2 \theta & 1 - \cos^2 \theta & \sin \theta \cos \theta \\ -\sin \theta \cos \theta & \sin \theta \cos \theta & 1 - \sin^2 \theta \end{bmatrix} = -\frac{\partial^2 \epsilon_2}{\partial \epsilon^2} \quad (99)$$

where we have used the following notations.

$$\epsilon_{1,2} = \frac{\text{tr}(\epsilon) \pm \sqrt{\text{tr}(\epsilon)^2 - 4 \det(\epsilon)}}{2} = \frac{\text{tr}(\epsilon) \pm r}{2}$$

$$\epsilon_{11} - \epsilon_{22} = r \cos \theta$$

$$2\epsilon_{12} = r \sin \theta$$

We now discuss some mathematical aspects. The potential  $\varphi$  is convex with respect to the strain for any damage value ( $d \leq 1$ ). It is differentiable in the classical sense everywhere, i.e. for any given strain, the corresponding stress is unique. However, the tangent stiffness  $\mathbf{H}$ , i.e. second derivative of the potential is discontinuous for  $\epsilon_1 = 0$  or  $\epsilon_2 = 0$  or  $\epsilon_1 + \epsilon_2 = 0$ . This can be seen from the expression of the  $D$  operator.

## 5. RESULTS

We present here four test cases to validate and illustrate the applicability of the TLS approach.

The first test case is the three-point bending problem with an imposed CMOD. Both the mesh sensitivity and the speed effect, i.e. modifications of the load–displacement curves depending on the

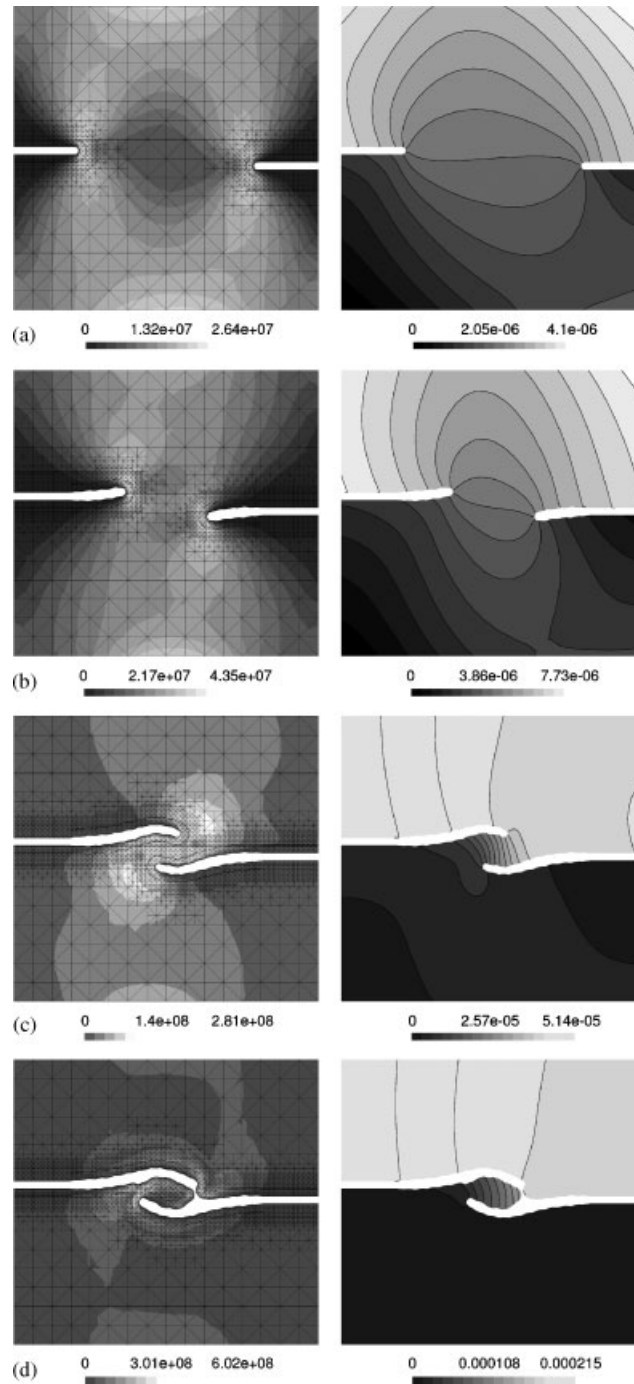


Figure 11. Time evolution of the von Mises stress (left) and displacement norm fields (right).

ratio between the crack mouth opening velocity and the damage front velocity [47], are observed and the results are compared with a reference crack solution. The three remaining test cases illustrate the advantages of the method by considering the coalescence, branching and merging of cracks with an imposed dissipation rate to represent severe snap-backs on the load–displacement curves.

All computations are performed using a linear relationship  $d(\phi)$  and the non-linear potential (88). Note that this non-linearity does not have much impact on the solution for the three-point bending problem since the damage zone essentially experiences traction. The dissipation potential

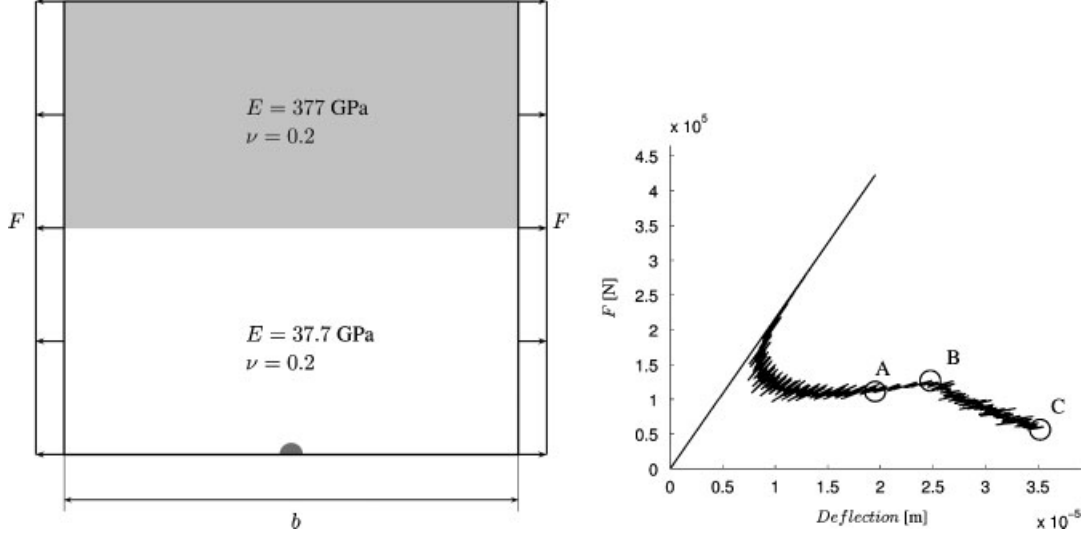


Figure 12. Initial configuration for the crack branching test case and load–displacement curve.

used is the one corresponding to the damage evolution law (44), using  $n = 1$ . The velocity  $v_n$  is discretized using polynomial (Hermite) modes providing a partition of unity. Each mode is defined (i.e. non-zero) on a length of about eight elements in the curvilinear coordinate along the front. The total number of modes is therefore increasing as the front length increases. For instance, 50 modes are used at the end of the coalescence test case (Figure 11).

Before the damage front may be grown it must be initiated. It is initiated at the location and for the load for which the critical local energy release  $Y_c$  is reached. A level set is placed with a radius of about two element sizes.

### 5.1. Three-point bending

We consider the beam in the three-point bending configuration depicted in Figure 5. Crack growth for this specimen has been studied by Carpinteri and Colombo [48] using finite elements. These results will be used as the reference results for the comparison. The material characteristics are the Young modulus  $E = 36.5 \times 10^9 \text{ Nm}^{-2}$  and the Poisson ratio of  $\nu = 0.1$ . Other parameters are chosen to match approximately the order of magnitude of the reference solution:  $Y_c = 100 \text{ Nm}^{-2}$ ,  $l_c = 7.5 \times 10^{-3} \text{ m}$  and  $k = 2.5 \times 10^{-2} \text{ s}^{-1}$  while we ensure a constant crack mouth opening velocity  $\dot{U}$  of  $2 \times 10^{-7} \text{ ms}^{-1}$ . We therefore impose in this test case a CMOD instead of a given dissipation rate.

First, we consider three different grid refinement levels to observe the mesh sensitivity. Figure 6 is a close-up view of the three displacement fields and damaged zones obtained for the same physical time  $t = 103.25 \text{ s}$  on three embedded regular meshes with an element size  $h = l_c/3, l_c/6$  and  $l_c/12$ . The corresponding load–displacement curves are depicted in Figure 7 for both the deflection and the CMOD. The same order of magnitude is reached for the three computations and the reference solution (continuous line). In Figure 8 is depicted the time evolution of the crack and the norm of the displacement field. The major loss of stiffness of the specimen happens between states B and C.

Then, a family of load–displacement curves can be obtained with the variation of the speed effect non-dimensional number

$$\frac{\dot{U}}{kl_c}$$

representing the ratio between the loading velocity and the front velocity  $v_n \propto kl_c$ . We consider here variations of  $k$  to observe the impact of the speed effect. Three load–displacement curves are depicted in Figure 9 for  $k = 2.5 \times 10^i \text{ s}^{-1}$  with  $i = -2, -3$  and  $-4$ . The results are in agreement

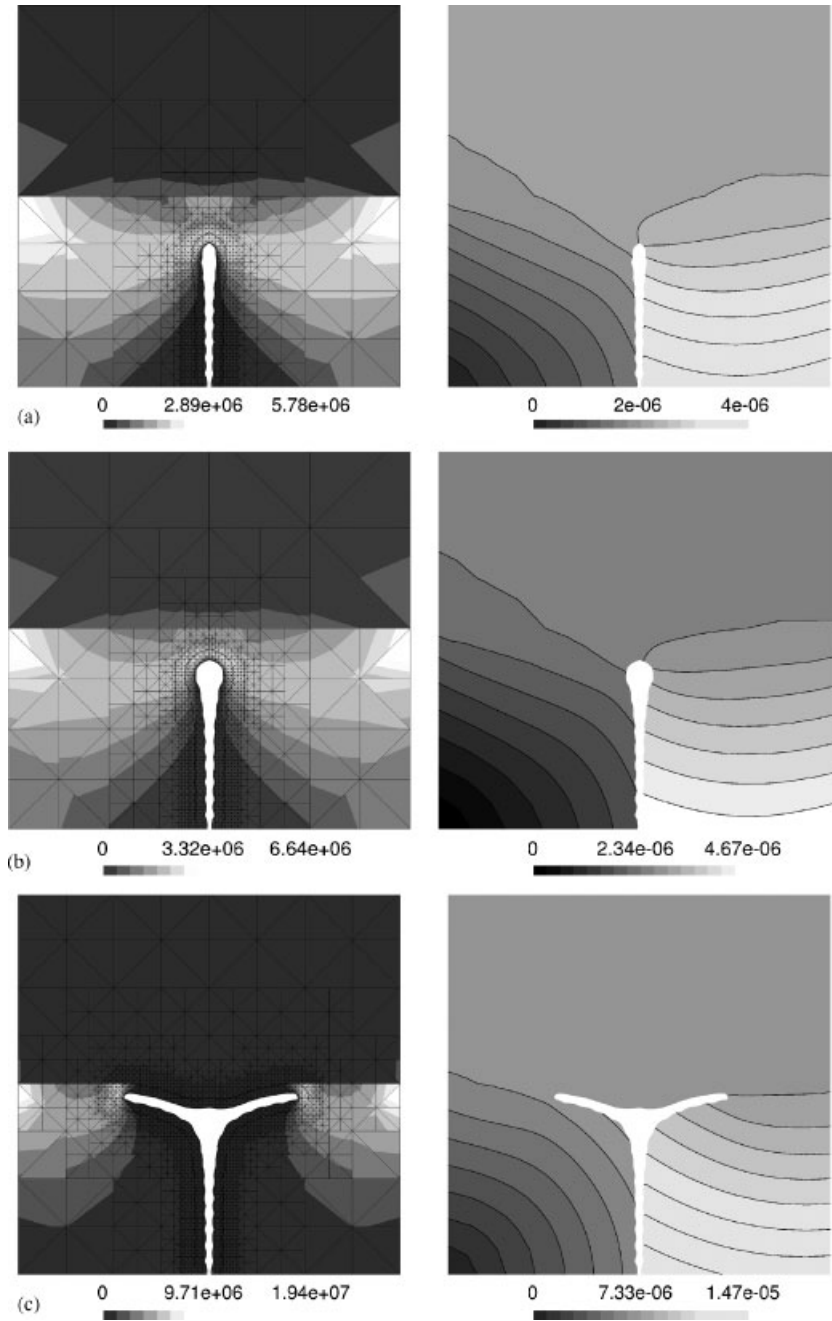


Figure 13. Evolution of the stress (left) and displacement (right) norms.

with the observations in [47]: the increase in the speed effect tends to scale the curves. Indeed, for a same damaged zone, the specimen stiffness  $F/U$  remains the same, but larger load and displacement are reached.

### 5.2. Crack coalescence

Let us consider the configuration depicted in Figure 10. The crack coalescence is a standard benchmark studied extensively in, for instance [49, 50]. We consider the ratios  $a/b=0.2$ ,  $e/b=0.025$  as in [50], with  $b=40$  mm,  $E=200$  GPa and  $\nu=0.3$ . Other parameters are  $l_c=1$  mm,  $Y_c=1$  kPa and  $k=2.5 \times 10^{-6} \text{ s}^{-1}$ , with an imposed dissipation rate of  $1 \text{ Wm}^{-2}$ .

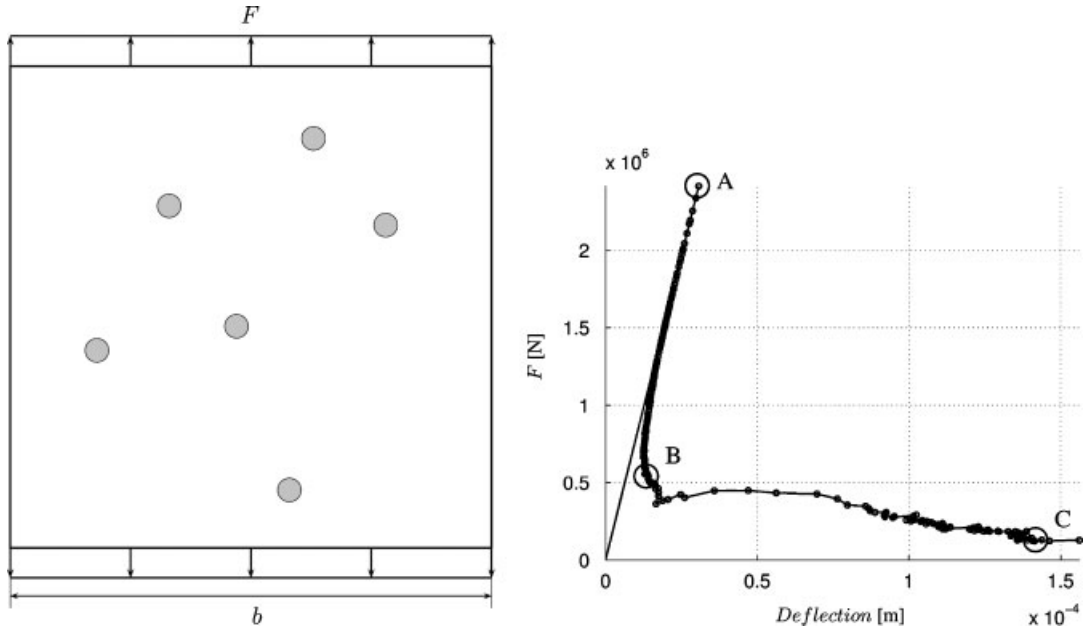


Figure 14. Random defects distribution for the crack percolation and load–displacement curve.

The load–displacement curve is depicted in Figure 10. The stress and displacement fields of points A, B, C and D can be observed in Figure 11. Oscillations appearing on the load–displacement plot seems to be due to the control in dissipation and will be investigated in a future work. Note however that small dissipation increments have been used in this computation, but there is no particular restriction on these imposed increments. We eventually obtain the expected crack growth pattern of complete failure (state D) in good agreement with experimental observations [49, 50].

### 5.3. Crack branching

This test case consists in a specimen made of two materials presenting different Young’s moduli. A crack is initiated in the material presenting the lower modulus, as depicted in Figure 12. The damage evolution is presented in Figure 13. The crack propagates normally until approaching the Young modulus transition zone (point A). Then, since branching requires less energy than continuing into the second material, the fully damaged zone becomes larger (point B) and the crack eventually branches into two parts (point C) as expected. This branching process naturally appears as the level set grows, and would clearly be much more difficult to represent with classical models.

### 5.4. Crack percolation

The last test case configuration is depicted in Figure 14. We consider a random distribution of small defects with a maximum initial size of 1 mm with  $l_c = 3.5$  mm and the specimen length  $b = 40$  mm. We choose  $Y_c = 100$  Pa,  $k = 2.5 \times 10^{-4} \text{ s}^{-1}$  and an imposed dissipation rate of  $100 \text{ Wm}^{-2}$ , for the Young modulus and the Poisson ratio of 37.7 GPa and 0.2, respectively. Note that crack percolation was also studied using the X-FEM in [51].

Comparing Figures 14 and 15, we observe that the specimen stiffness is not much affected when the defects grow, until they reach a maximum damage of  $d = 1$ . Then, cracks appear as shown in point B, and the stiffness decreases much more quickly. We also observe the merging of damage zones and cracks. Unlike classical fracture mechanics methods, this process appears naturally as the level set function grows, and the cracks merging does not require any particular implementation. Moreover, it is not necessary to explicitly determine which crack should grow. Indeed, the front velocity is already computed as the velocity minimizing the energy while ensuring a given dissipation rate.

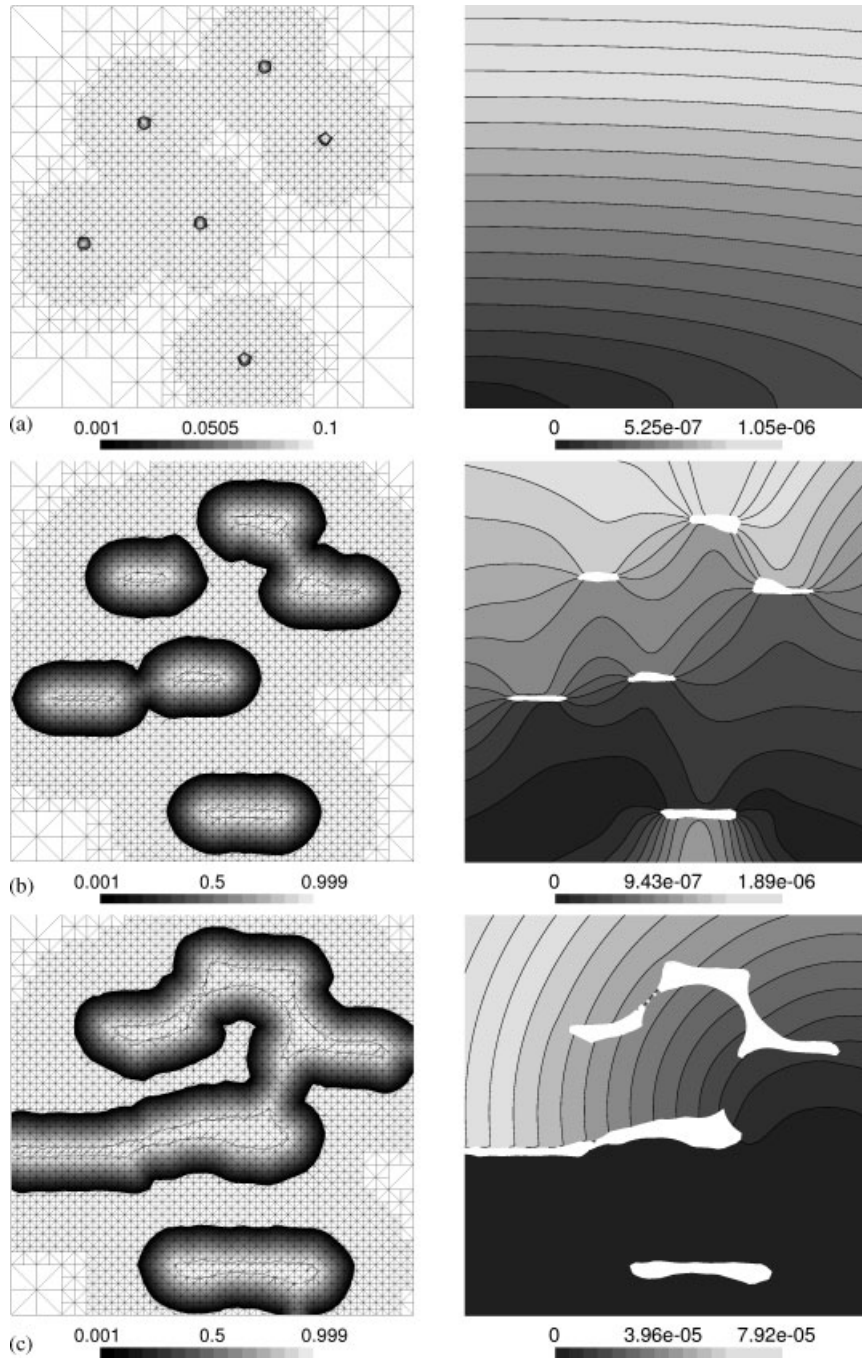


Figure 15. Time evolution of the damage (left) and the norm of the displacement field (right).

## 6. CONCLUSIONS

In this paper, we have introduced a new way to model damage growth in solids. The model is based on a so-called Thick Level Set (TLS). The damage variable is tied to the distance to the damage front (iso-zero of the level set). Beyond a critical distance the material is considered completely damaged (but may still sustain compression if it is prescribed in the model). The model thus introduces a length scale and it regularizes local damage models. A set of numerical experiments

did demonstrate the capability of the model to handle initiation, growth, branching and coalescence of crack-like patterns.

#### ACKNOWLEDGEMENTS

The authors thank R. Desmorat and G. Pijaudier-Cabot for fruitful discussions. The reviewers are also gratefully acknowledged for their accurate and constructive comments. Paul-Emile Bernard is a Postdoctoral Researcher supported by the Belgian National Fund for Scientific Research (FNRS). The support of the Fondation FNRAE (Fondation Aéronautique et Espace) is also acknowledged.

#### REFERENCES

1. Kachanov L. Time of rupture process under creep conditions. *Izvestiia Akademii Nauk SSSR, Otdelenie Tekhnicheskikh Nauk* 1958; **8**:26–31.
2. Lemaitre J. *A Course on Damage Mechanics*. Springer: Berlin, 1992.
3. Peerlings R. Gradient damage for quasi-brittle materials. *Master Thesis*, University of Eindhoven, 1994.
4. Peerlings R, de Borst R, Brekelmans W, De Vree J. Gradient enhanced damage for quasi-brittle materials. *International Journal for Numerical Methods in Engineering* 1996; **39**:3391–3403.
5. Bazant Z, Belytschko T, Chang T. Continuum theory of strain-softening. *Journal of Engineering Mechanics* 1984; **110**:1666–1692.
6. Pijaudier-Cabot G, Bazant Z. Non-local damage theory. *Journal of Engineering Mechanics* 1987; **113**:1512–1533.
7. Aifantis E. On the structural origin of certain inelastic models. *Journal of Engineering Materials and Technology* 1984; **106**:326–330.
8. Triantafyllidis N, Aifantis E. A gradient approach to localization of deformation: I. Hyperelastic model. *Journal of Elasticity* 1986; **16**:225–237.
9. Schreyer H, Chen Z. One-dimensional softening with localization. *Journal of Applied Mechanics* 1986; **53**:791–799.
10. Mühlhaus H, Vardoulakis I. The thickness of shear bands in granular materials. *Géotechnique* 1987; **37**:271–283.
11. Fremond M, Nedjar B. Damage, gradient of damage and principle of virtual power. *International Journal of Solids and Structures* 1996; **3**(8):1083–1103.
12. Pijaudier-Cabot G, Burlion N. Damage and localisation in elastic materials with voids. *Mechanics of Cohesive-frictional Materials* 1996; **1**:129–144.
13. Nguyen QS, Andrieux S. The non-local generalized standard approach: a consistent gradient theory. *Comptes Rendus Académie des Sciences de Paris, Série II* 2005; **333**:139–145.
14. Peerlings R, Geers M, de Borst R, Brekelmans W. A critical comparison of non-local and gradient-enhanced softening continua. *International Journal of Solids and Structures* 2001; **38**(44–45):7723–7746.
15. Hakim V, Karma A. Laws of crack motion and phase-field models of fracture. *Journal of Mechanics and Physics of Solids* 2009; **57**(2):342–368.
16. Hakim V, Karma A. Crack path prediction in anisotropic brittle materials. *Physical Review Letters* 2005; **95**:235501.
17. Karma A, Kessler D, Levine H. Phase field of mode III dynamic fracture. *Physical Review Letters* 2001; **87**04:045501.
18. Francfort GA, Marigo J-J. Revisiting brittle fracture as an energy minimization problem. *Journal of Mechanics and Physics of Solids* 1998; **46**(8):1319–1342.
19. Bourdin B, Francfort GA, Marigo J-J. Numerical experiments in revisited brittle fracture. *Journal of Mechanics and Physics of Solids* 2000; **48**(4):797–826.
20. Bourdin B, Francfort GA, Marigo J-J. The variational approach to fracture. *Journal of Elasticity* 2008; **91**:5–148.
21. Allaire G, Van Goethem N, Jouve F. A level set method for the numerical simulation of damage evolution, *Technical Report, 629*, Note École Polytechnique, Centre de Mathématiques Appliquées, 2007.
22. Pradeilles-Duval RM, Stolz C. On the evolution of solids in the presence of irreversible phase transformation. *Comptes Rendus Académie des Sciences de Paris, Série II* 1991; **313**(3):297–302.
23. Pradeilles-Duval RM, Stolz C. Mechanical transformations and discontinuities along a moving surface. *Journal of Mechanics and Physics of Solids* 1995; **43**(1):91–121.
24. Moës N, Chevaugeon N, Dufour F. *A Regularized Brittle Damage Model Solved by a Level Set Technique*, IUTAM Book Series, Cape Town, South Africa, 2008.
25. Nguyen QS, Pradeilles RM, Stolz C. Sur une loi régularisante en rupture et endommagement fragile. *Comptes Rendus Académie des Sciences de Paris, Série II* 1989; **309**:1515–1520.
26. Stolz C. Bifurcation of equilibrium solutions and defects nucleation. *International Journal of Fracture* 2007; **147**:103–107.
27. Salac D, Lu W. A level set approach to model directed nanocrack patterns. *Computer Material Sciences* 2007; **39**(4):849–856.
28. Simone A, Wells GN, Sluys LJ. From continuous to discontinuous failure in a gradient-enhanced continuum damage model. *Computer Methods in Applied Mechanics and Engineering* 2003; **192**(41–42):4581–4607.

29. Simone A, Sluys LJ. The use of displacement discontinuities in a rate-dependent medium. *Computer Methods in Applied Mechanics and Engineering* 2004; **193**(27–29):3015–3033.
30. Comi C, Mariani S, Perego U. An extended FE strategy for transition from continuum damage to mode I cohesive crack propagation. *International Journal for Numerical Analysis and Methods in Geomechanics* 2007; **31**(2):213–238.
31. Saanouni K, Belamri N, Autesserre P. Finite element simulation of 3D sheet metal guillotining using advanced fully coupled elastoplastic-damage constitutive equations. *Finite Elements in Analysis and Design* 2010; **46**(7):535–550.
32. Mazars J, Pijaudier-Cabot G. From damage to fracture and conversely: a combined approach. *International Journal of Solids and Structures* 1996; **33**(20–22):3327–3342.
33. Stolz C. On the propagation of discontinuity and shock generating function in anelastic solids mechanics. *Comptes Rendus Académie des Sciences de Paris, Série II* 1989; **308**:1–3.
34. Stolz C. Thermodynamical description of running discontinuities. In *Continuum Thermodynamics*, Maugin GA et al. (eds). Kluwer Academic Publishers: Dordrecht, 2000; 401–412.
35. Dequiedt JL, Stolz C. Propagation of shock discontinuity in an elasto-plastic materials: constitutive relations. *Archives of Mechanics* 2004; **56**:5.
36. Lorentz E, Andrieux S. Analysis of non-local models through energetic formulations. *International Journal of Solids and Structures* 2003; **40**(12):2905–2936.
37. Simone A, Askes H, Sluys LJ. Incorrect initiation and propagation of failure in non-local and gradient-enhanced media. *International Journal of Solids and Structures* 2004; **41**:351–363.
38. Moës N, Dolbow J, Belytschko T. A finite element method for crack growth without remeshing. *International Journal for Numerical Methods in Engineering* 1999; **46**(1):131–150.
39. Belytschko T, Moës N, Usui S, Parimi C. Arbitrary discontinuities in finite elements. *International Journal for Numerical Methods in Engineering* 2001; **50**(4):993–1013.
40. Daux C, Moës N, Dolbow J, Sukumar N, Belytschko T. Arbitrary branched and intersecting cracks with the eXtended finite element method. *International Journal for Numerical Methods in Engineering* 2000; **48**: 1741–1760.
41. Sethian JA. *Level Set Methods and Fast Marching Method: Evolving Interfaces in Computational Geometry, Fluid Mechanics, Computer Vision, and Materials Science*. Cambridge University Press: Cambridge, 1999.
42. Osher S, Fedkiw R. *Level Set Methods and Dynamic Implicit Surfaces*. Springer: Berlin, 2002.
43. Ben Dhia H, Vautier I, Zarroug M. Problèmes de contact frottant en grandes transformations: du continu au discret. *Revue Européenne des Éléments Finis* 2000; **9**:243–261.
44. Zarroug M. *Éléments Mixtes de Contact Frottant en Grandes Transformation et Applications*. Ecole Centrale de Paris, 2002.
45. Verhoosel CV, Remmers JJC, Gutiérrez MA. A dissipation-based arc-length method for robust simulation of brittle and ductile failure. *International Journal for Numerical Methods in Engineering* 2009; **77**:9.
46. Lemaitre J, Desmorat R. *Engineering Damage Mechanics: Ductile, Creep, Fatigue and Brittle Failures*. Springer: Berlin, 2005.
47. Bazant ZP, Gettu R. Rate effects and load relaxation in static fracture of concrete. *ACI Materials Journal* 1992; **89**(5):456–468.
48. Carpinteri A, Colombo G. Numerical analysis of catastrophic softening behavior (snap-back instability). *Computers and Structures* 1989; **31**:607–636.
49. Melin S. Why do cracks avoid each other. *International Journal of Fracture* 1983; **23**(1):37–45.
50. Sumi Y, Wang ZN. A finite-element simulation method for a system of growing cracks in a heterogeneous materials. *Mechanics of Materials* 1998; **28**:197–206.
51. Budyn E, Zi G, Moës N, Belytschko T. A model for multiple crack growth in brittle materials without remeshing. *International Journal for Numerical Methods in Engineering* 2004; **61**:10.