



How the structure, nutritional and sensory attributes of pasta made from legume flour is affected by the proportion of legume protein

Karima Laleg, Cécile Barron, Sylvie Cordelle, Pascal Schlich, Stéphane Walrand, Valérie Micard

► To cite this version:

Karima Laleg, Cécile Barron, Sylvie Cordelle, Pascal Schlich, Stéphane Walrand, et al.. How the structure, nutritional and sensory attributes of pasta made from legume flour is affected by the proportion of legume protein. *LWT - Food Science and Technology*, 2017, 79, pp.471-478. 10.1016/j.lwt.2017.01.069 . hal-01517226

HAL Id: hal-01517226

<https://hal.science/hal-01517226>

Submitted on 26 Sep 2017

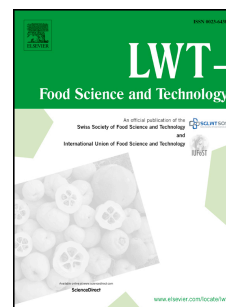
HAL is a multi-disciplinary open access archive for the deposit and dissemination of scientific research documents, whether they are published or not. The documents may come from teaching and research institutions in France or abroad, or from public or private research centers.

L'archive ouverte pluridisciplinaire **HAL**, est destinée au dépôt et à la diffusion de documents scientifiques de niveau recherche, publiés ou non, émanant des établissements d'enseignement et de recherche français ou étrangers, des laboratoires publics ou privés.

Accepted Manuscript

How the structure, nutritional and sensory attributes of pasta made from legume flour is affected by the proportion of legume protein

Karima Laleg, Cécile Barron, Sylvie Cordelle, Pascal Schlich, Stéphane Walrand, Valérie Micard



PII: S0023-6438(17)30081-6

DOI: [10.1016/j.lwt.2017.01.069](https://doi.org/10.1016/j.lwt.2017.01.069)

Reference: YFSTL 6021

To appear in: *LWT - Food Science and Technology*

Received Date: 10 October 2016

Revised Date: 23 January 2017

Accepted Date: 25 January 2017

Please cite this article as: Laleg, K., Barron, C., Cordelle, S., Schlich, P., Walrand, S., Micard, V., How the structure, nutritional and sensory attributes of pasta made from legume flour is affected by the proportion of legume protein, *LWT - Food Science and Technology* (2017), doi: 10.1016/j.lwt.2017.01.069.

This is a PDF file of an unedited manuscript that has been accepted for publication. As a service to our customers we are providing this early version of the manuscript. The manuscript will undergo copyediting, typesetting, and review of the resulting proof before it is published in its final form. Please note that during the production process errors may be discovered which could affect the content, and all legal disclaimers that apply to the journal pertain.

Comment citer ce document :

Laleg, K., Barron, C., Cordelle, S., Schlich, P., Walrand, S., Micard, V. (Auteur de correspondance) (2017). How the structure, nutritional and sensory attributes of pasta made from legume flour is affected by the proportion of legume protein. *LWT - Food Science and Technology*, 79, 471-478. DOI : 10.1016/j.lwt.2017.01.069

1 **How the structure, nutritional and sensory attributes of pasta made from legume flour is**
 2 **affected by the proportion of legume protein**

3

4 **Authors:**

5 KARIMA LALEG ^{a,b}, CÉCILE BARRON ^a, SYLVIE CORDELLE ^c, PASCAL SCHLICH ^c, STÉPHANE
 6 WALRAND ^b AND VALÉRIE MICARD ^{a,*}

7

8 **Affiliation:**

9 ^a, UMR IATE, Cirad, Inra, Montpellier SupAgro, Université de Montpellier, F-34060 Montpellier,
 10 France;

11 ^b, CRNH Auvergne, UNH, UMR 1019, Inra, F-63000, Clermont-Ferrand, France.

12 ^c, Centre des Sciences du Goût et de l'Alimentation, CNRS, INRA, Univ. Bourgogne Franche-Comté,
 13 F-21000 Dijon, France.

14

15 ***Corresponding author:**

16 E-mail: valerie.micard@supagro.fr; JRU-IATE, 2 Place Pierre Viala, 34060-Montpellier,
 17 France.

18 Tel: +33(0)4 99 61 28 89.

19 **Abstract**

20 In this study, wheat in pasta was partially or completely replaced by faba to increase its
 21 protein quantity and improve its quality. Increasing the ratio of faba:wheat protein from 0:100
 22 to 100:0 (g/g) in pasta enlarged its protein network at the microscopic scale and linearly
 23 diluted the covalently linked gluten network of wheat pasta by weakly linked proteins. A
 24 concomitant linear increase in the cooking loss (up to 2.6 fold), a decrease in resilience (up to
 25 1.4 fold) and an increase of the *in-vitro* protein digestion (up to 25%) were observed in pasta.
 26 The increase in drying temperature (90°C vs. 55°C) promoted the covalent aggregation of
 27 proteins in all pasta, but was more efficient in legume pasta, enhancing their resilience and
 28 reducing their cooking loss, without altering the degree of protein hydrolysis. This was partly
 29 explained by the reduction in trypsin inhibitory activity in all legume pasta dried at 90°C.
 30 Interestingly, scores for sensory attributes such as liking attributed to pasta containing 80%
 31 faba-protein were close to scores given to a commercial whole wheat pasta. Pasta made
 32 exclusively from faba dried at 55°C or 90°C tended to be liked more than their commercial
 33 gluten-free counterparts.

34 **Key words**

35 Protein network structure, cooking quality, *in-vitro* protein digestion, trypsin inhibitory
 36 activity, sensory analysis.

37 **Abbreviations**

38 °H: degree of hydrolysis, DTE: dithioerythritol, F: faba, LT: low temperature, OCT: optimal
 39 cooking time, SDS: sodium dodecyl sulphate, SE-HPLC: size exclusion-high performance
 40 liquid chromatography, S-GF: gluten-free spaghetti, S-WW: whole wheat spaghetti, TDS:
 41 temporal dominance of sensation, TIA: trypsin inhibitory activity, VHT: very high
 42 temperature, W: Wheat.

43

1. Introduction

Consumer demand for an alternative to meat proteins in the diet has been increasing in recent decades. The potential of legumes such as faba to partly replace meat intake in the human diet was reviewed by Multari, Stewart, and Russell (2015). In addition, the association of wheat and legumes in the same food helps benefit from the nutritional composition of both crops, notably their complementary essential amino acid profile (Duranti, 2006). Among several traditional wheat products, pasta is an appropriate base for this association because of its palatability, low cost and wide consumption. Legume-wheat mixed pasta with 50% of faba protein has been demonstrated to have a better essential amino acid profile than classical wheat-gluten or wheat-egg enriched pasta at identical protein content (Laleg, Barron, Sante-Lhoutellier, Walrand & Micard, 2016a) with a conserved low glycemic index (Greffeuille *et al.*, 2015). However, the total amount of essential amino acids required by the body has not yet been reached in pasta (Laleg *et al.*, 2016a) because of technological problems that arose when more than ~50% legume protein was included in the pasta (Petitot, Boyer, Minier & Micard, 2010b; Wood, 2009). Two recent studies demonstrated that it is now possible to overcome the 50% threshold in legume protein in pasta and that it is even possible to produce pasta with legume as the only source of proteins (Laleg, Cassan, Abecassis & Micard, 2016b; Rosa-Sibakov *et al.*, 2016). These completely gluten-free legume pasta could be of interest for celiac patients, or for people who wish to reduce or eliminate gluten from their diet. However, including legume protein in pasta can also have unexpected nutritional and sensory effects. Legumes contain some protease inhibitors such as trypsin inhibitors, which can alter the digestibility of proteins (Duranti, 2006) but could be partially or totally inactivated by thermal treatment of legume pasta (Laleg, Cassan, Barron, Prabhasankar & Micard, 2016c; Zhao, Manthey, Chang, Hou & Yuan, 2005). In addition, it has been reported that beyond 28% of gluten protein substitution with legume protein, cooking properties and sensory

69 acceptance of pasta are reduced (RayasDuarte, Mock & Satterlee, 1996). This was attributed
70 to the dilution or the absence of the gluten network responsible for the pleasant organoleptic
71 and cooking quality of pasta. The use of high temperature to dry pasta has been shown to
72 prevent the alteration of cooking, textural and organoleptic properties of classical and low
73 legume protein (<50% of total protein) enriched pasta by promoting covalent links between
74 proteins (Laleg *et al.*, 2016a). However the effect of drying temperature on pasta with higher
75 level of legume protein substitution has not yet been studied.

76 The aim of this work was to study the impact of the percentage (0% to 100%) of enrichment
77 using legume protein (faba) in pasta and the impact of drying temperature (low temperature,
78 LT, vs. very high temperature, VHT) on pasta structure and its resulting textural and cooking
79 properties. The effects of changes in pasta formulation and/or processing on trypsin inhibitory
80 activity and on its protein network structure and resulting *in-vitro* digestibility were analyzed.

81 Pasta with the best textural, cooking and/or nutritional qualities was subjected to consumer
82 acceptance analyses and compared to a commercial gluten-free and a whole wheat counterpart
83 for the first time using the Temporal Dominance of Sensations test.

2. Material and methods

Wheat semolina (W) and faba flour (F) were supplied by Panzani (Marseille, France) and GEMEF industries (Aix-en-Provence, France), respectively. W and F contained, on a dry basis, 13.1 and 24.0 g/100 g of proteins, 77.8 and 57.6 g/100 g of starch, and 2.4 and 11.7 g/100 g of fibers, respectively. The particle size distribution (D50) of W-semolina and F-flour was 252 and 25 μ m, respectively. Whole wheat spaghetti (S-WW; Celnat, Saint-Germain-Laprade, France) and gluten-free spaghetti (S-GF; Schär, Burgstall, Italy) made from maize, millet and rice were purchased from a local French market and used to evaluate the sensory attributes of our pasta.

1. Pasta production

Pasta containing 0 (F0), 50 g (F50), 80 g (F80) and 100 g (F100) of faba protein per 100 g of total protein were produced using a mixture of W-semolina and F-flour at W:F (g/g) ratios of 100:0, 65:35, 30:70 and 0:100, respectively. Pasta formulation and composition are detailed in table 1. F0 and F50 pasta were processed into spaghetti as described by (Petitot *et al.*, 2010b). F80 and F100 pasta were produced according to the WO2016097328A1 patent (Laleg *et al.*, 2016b). F0, F50, F80 and F100 were hydrated to 47, 45, 43 and 42 g/100 g (db) respectively, mixed for 20 minutes and extruded using a continuous pilot-scale pasta extruder (Bassano, Lyon, France). All the pasta were dried at low temperature 55°C (LT) or at 90°C (VHT) in a pilot-scale drier (AFREM, Lyon, France). The diameter of the dried pasta was 1.56 ± 0.03 mm for F0 and F50, 1.51 ± 0.01 mm for F80 and 1.47 ± 0.03 mm for F100 pasta. The total protein content of the dry pasta was determined in duplicate using the Kjeldahl procedure (NF V 03-050, 1970) with a conversion factor of 5.7 for wheat and of 6.25 for faba proteins. Lysine and cysteine amino acids were determined in duplicate on dry pasta at CIRAD

(Montpellier, France) according to Moore, Spackman, and Stein (1958). Pasta composition is detailed in table 1.

2. Molecular structure of the protein network of dried pasta

The extraction procedure of pasta protein was performed according to Morel, Dehlon, Autran, Leygue and Bar-L'Helgouac'h (2000). Samples of dried pasta were ground and proteins were extracted in triplicate from the raw mixtures used for pasta production (100% semolina, 65% semolina + 35% faba, 30% semolina + 70% faba and 100% faba) and from ground pasta. The first extraction was performed in sodium dodecyl sulphate (SDS, 0.1 mol/L) to disrupt the electrostatic, hydrophobic and hydrophilic interactions between proteins. After centrifugation, the pellet was subjected to a second extraction in SDS (0.1 mol/L) + dithioerythritol (DTE, 0.02 mol/L), and sonicated (Vibracell 72434, Bioblock Scientific, Illkirch, France) at 50% and at a frequency of 20 kHz for 5 min to disrupt disulfide linked proteins. The protein size distribution of each extract was studied by size exclusion (SE)-HPLC (Morel *et al.*, 2000). Areas (in arbitrary units) of SDS-soluble and DTE-soluble proteins were added and the sum (i.e. total extractable proteins) was expressed as a percent of the corresponding total area calculated for W-semolina (for F0), for blends of semolina and F-flour with 50% and 80% protein from F-flour (for F50 and F80, respectively), or for F-flour (for F100). The remaining pellet made of non-extractable proteins represented proteins linked by covalent linkages that were not affected by sonication and/or DTE (e.g.: isopeptide bonds).

3. Cooking and textural properties of pasta

Each pasta was cooked to its own optimal cooking time (OCT) in demineralized water containing 7 g/L of salt according to the AACC approved method (66-50), and then left to rest for 10 min in a covered container at 25°C in a saturated vapor atmosphere. Optimal cooking time was 9.6 ± 0.2 min for F0-LT, 10.3 ± 0.5 min for F0-VHT, 9.0 ± 0.1 min for F50-LT, 9.6

132 ± 0.3 min for F50-VHT, 9.2 ± 0.1 min for F80-LT, 9.5 ± 0.1 min for F80-VHT, 9.5 ± 0.2 min
133 for F100-LT and 9.7 ± 0.1 min for F100-VHT.

134 Cooking losses were determined in triplicates according to the following equation:

$$\text{Cooking loss (\%, db)} = \frac{\text{cooked pasta (g, db)} - \text{dry pasta (g, db)}}{\text{dry pasta (g, db)}}$$

135 A TA-XTplus (Stable Micro Systems, Scarsdale, USA) texture profile analyzer was used to
136 evaluate the resilience of the pasta. A single strand (2 cm) of spaghetti was compressed, using
137 a cylindrical probe, at a constant rate of deformation (1 mm/s) to 70% of the initial spaghetti
138 thickness. The probe was then retracted. The peak of the force (N) was plotted as a function of
139 deformation (mm). Resilience was determined in 6 replicates as the ratio of the area under the
140 second half of the peak to the area under the first half of the peak (Petitot *et al.*, 2009).

141 **4. Microscopic structure of cooked pasta**

142 The microstructure of F0-LT, F100-LT and F100-VHT pasta cooked to OCT was observed
143 using bright field light microscopy. Pasta sections (8 μm) were stained for 10 min with fast
144 green (Sigma Aldrich Co., USA) and for one minute with lugol (Fluka, Buchs, Switzerland)
145 (Petitot, Barron, Morel & Micard, 2010a). Bright field images were acquired using the
146 multizoom AZ100M microscope (Nikon, Tokyo, Japan) equipped with a Nikon DSRi1
147 (Nikon, Tokyo, Japan) color digital camera. Observations were made with a plan fluor 5 \times
148 objective and a fixed optical zoom of 8, resulting in a total magnification of 40 \times .

149 **5. Trypsin inhibitory activity (TIA) and *in-vitro* protein digestion of cooked pasta**

150 TIA was determined in triplicate according to the standardized method ISO14902 (2009) on
151 raw material and on freeze-dried OCT cooked pasta. *In-vitro* protein digestion of pasta was
152 performed in quadruplet on 60 mg freeze-dried ground cooked pasta at 37°C in a shaking
153 water bath according to the method of Pasini, Simonato, Giannattasio, Peruffo and Curioni
154 (2001) slightly modified. Samples were suspended in 4 mL of 0.2 mol/L HCl containing
155 73,400 U/g of protein of pepsin (P7125, Sigma, St. Louis, US). After 30 min, 1.15 ml of boric

acid buffer (pH 6.8) containing 10.4 USP/mL of pancreatin (P7545, Sigma, St. Louis, US), was added. Digestion was stopped after 30 min of pepsin and 180 min of pancreatic attack by adding one volume of trichloroacetic acid (1.2 mol/L). The amount of free amino groups (NH₂) in the digestion extracts (supernatant) were measured using the ninhydrin method (Prochazkova, Varum & Ostgaard, 1999), at the beginning of digestion (T₀), during digestion (T_x) and after a total hydrolysis of T₀ (HCl 6 mol/L, 24 h at 105°C) (T_{total}). The degree of protein hydrolysis (°H) was calculated according to the equation:

$$^{\circ}\text{H} (\%) = \frac{\text{NH}_{2(\text{T}_x)} - \text{NH}_{2(\text{T}_0)}}{\text{NH}_{2(\text{T}_{\text{total}})} - \text{NH}_{2(\text{T}_0)}} \times 100$$

6. Sensory analysis of cooked pasta by Temporal Dominance of Sensations (TDS)

Six pasta were tested (F0-LT, F80-LT, F100-LT and F100-VHT cooked to OCT and two commercial pasta: S-GF and S-WW cooked for 11 and 8 min, respectively, as recommended by the manufacturer) by 43 consumers, 19 to 69 years old, balanced for gender and age. Of these, 21 were regular consumers of whole wheat pasta. Ten attributes (Table 2) were presented to the subjects prior to the sensory session. A dominant sensation was defined as a sensation that triggers the most attention at a specific point of time (Pineau *et al.*, 2009). Sensory sessions were organized in a sensory room lit with red light and equipped with separate booths. The subject received 45 g of each pasta, monadically presented. He placed one bite into his mouth, he focused on the dominant sensation and clicked on the corresponding button. When the dominant perception changed, the subject scored the new dominant sensation. He was free to choose the same dominant sensation several times or to not select an attribute as dominant at all. He carried on scoring dominant sensations after swallowing, until the perception ended. Afterwards, the subject scored his current liking on a linear scale labeled at the far left “I do not like it at all” and at the far right “I like it very much” (Meilgaard, Civille & Carr, 2006). He proceeded in the same way for a second, then for a third bite of the pasta. For each pasta and each bite, TDS curves were produced (Pineau

180 *et al.*, 2009). Times were standardized between 0 (first score) and 1 (“I no longer perceive
181 anything”) (Lenfant, Loret, Pineau, Hartmann & Martin, 2009).

182 **7. Statistical analysis**

183 All data (except for sensory analysis) were subjected to analysis of variance (two-way
184 ANOVA) using “formulation” and “drying” as factors. ANOVA was followed by the Fisher’s
185 least significant difference (LSD) test to compare means at the 5% significance level, using
186 Statistica 8.0 software (Tulsa OK, USA).

187 Concerning the sensory analysis, the confidence level was set to 5%. For the liking scores,
188 statistical calculations were performed using SAS system (SAS Institute Inc., Cary, NC,
189 USA). The analyses of the TDS measurements were performed using TimeSens® software.
190 The analysis of the liking scores was performed using the MIXED SAS® procedure, with
191 product, bite, type of consumer and their three interactions of order 2 as fixed effects.
192 Consumer and consumer interaction with bite and with product were the three random effects
193 in this model in which bite was a repeated factor within product by consumer with a
194 heterogeneous auto-regressive covariance structure. Subsequently, least square means were
195 calculated for the significant effects in order to analyze the differences revealed. In addition, a
196 canonical variate analysis (CVA) was computed to distinguish the products based on the
197 dominance durations of the TDS attributes. A CVA can be considered as a principal
198 component analysis of the average durations of the attributes by product using the inverse of
199 the within product covariance matrix as a metric, i.e., taking panelist heterogeneity into
200 account.

201 **3. Results and discussion**

202 **1. Structure of the pasta protein network**

203 Figure 1 shows the protein soluble in SDS (weakly linked), in DTE (disulfide linked) and
 204 non-extractable (covalently, other than disulfide, linked) protein in dry (LT and VHT) pasta as
 205 a function of the concentration of F-protein.

206 In LT-pasta, increasing F-protein from 0% to 100% linearly increased the weakly linked
 207 protein (SDS-soluble) at a rate of 0.24 (figure 1A) and linearly decreased disulfide linked
 208 (DTE-soluble) proteins at the same rate (-0.25) (Figure 1B), with no creation of other
 209 covalently linked (non-extractable) proteins (Figure 1C). Laleg *et al.* (2016a) and Petitot *et al.*
 210 (2010b) also detected a decrease in DTE-soluble proteins concomitant with an increase in
 211 SDS-soluble proteins when they substituted 50% of wheat protein with faba or split pea
 212 flours. In their study, DTE-soluble proteins also reached 15% and 20% of total proteins for
 213 faba and split pea, respectively. However, here for the first time, we demonstrate the linear
 214 character of the weakening of protein network when the proportion of faba protein is
 215 increased in pasta. Only 4.5% of total proteins in F100-LT were disulfide bonded versus 30%
 216 in F0-LT pasta. In the corresponding raw materials, (faba flour and wheat semolina), these
 217 percentages were 3% and 15%, respectively (result not shown). Only wheat proteins therefore
 218 appeared to have reacted through disulfide bonds under LT drying conditions. Even if the F-
 219 protein contained 9.6 mg cysteine/g protein (versus 17.2 mg/g in wheat protein; table 1), they
 220 only created minor disulfide linked proteins under LT drying. This fact and the linear
 221 character of the decrease in DTE-soluble protein suggests that faba proteins acted as a diluting
 222 agent of gluten in mixed wheat-faba pasta dried in LT conditions. The low water content (42-
 223 47%, db) required for the production of pasta, the low energy input during mixing: ~ 8 kJ/kg
 224 and extrusion: ~ 70 kJ/kg (Abecassis, Abbou, Chaurand, Morel & Vernoux, 1994; Icard-
 225 Verniere & Feillet, 1999) and the choice of LT drying program, were probably not enough to
 226 force W-F and F-F protein to interact covalently via disulfide bridges.

227 In comparison to LT drying, whatever the F-protein content of the pasta, VHT drying led to a
 228 higher formation of disulfide and to the additional creation of other covalent linkages (e.g.
 229 isopeptide or Maillard products) at the expense of weakly linked proteins (Figure 1). This has
 230 already been reported in 100% wheat (De Zorzi, Curioni, Simonato, Giannattasio & Pasini,
 231 2007) and protein enriched pasta (with 35% faba or 5% egg white) (Laleg *et al.*, 2016a). In
 232 the present study, a much higher proportion of covalently linked proteins was detected in
 233 F100-VHT than in F100-LT (32% vs. 4%, respectively), showing that a high drying
 234 temperature enables additional reactivity of F-proteins. Under VHT drying, disulfide bonded
 235 proteins were probably formed through the interaction of free sulfhydryl groups between
 236 wheat-wheat proteins, like in LT-pasta, but also in faba-faba protein or even wheat-faba
 237 proteins. In VHT-pasta, like in LT-pasta, the variations in all kinds of protein linkages (weak,
 238 disulfide and other covalent) as a function of the concentration of F-protein were linear.
 239 However, the rate of weakening of the protein network (increase in SDS-soluble proteins)
 240 with the increase in the F-protein concentration was twice as high in VHT pasta than in LT-
 241 pasta.

242 2. Microscopic structure

243 Figure 2 shows the microscopic structure of F0-LT, F100-LT and F100-VHT cooked pasta.
 244 The central region of F0-LT presented compact starch granules (blue) with almost no clearly
 245 visible protein network (green). Whatever the drying temperature, F100 presented a more
 246 open structure, with highly swollen starch granules and a visibly thicker protein network.
 247 Starch granules were elongated in F0 and round/oval in F100, related to the respective shape
 248 of starch in wheat and faba raw materials (Petitot *et al.*, 2010a). In the internal region of
 249 F100-VHT, the starch granules were slightly darker in color than in F100-LT, probably
 250 related to limited gelatinization (Cunin, Handschin, Walther & Escher, 1995). The external
 251 region of F0-LT presented highly swollen and disintegrated starch granules in comparison to

the pasta core, as already reported in the literature (Petitot *et al.*, 2010a). In F100-LT, the starch granules in the external region were as swollen as in the pasta core, and coalesced to form a continuous phase at the surface of the pasta excluding protein mass. In F100-VHT, the starch was held within a protein network, which was more uniformly dispersed around starch granules than in F100-LT.

3. Cooking and textural properties

Pasta cooking losses and resilience are presented in figure 3A and 3B, respectively. In LT-pasta, increasing F-protein from 0% to 100% linearly increased the cooking loss, and linearly decreased the pasta resilience. Petitot *et al.* (2010b) also reported 7% cooking loss and 0.53 resilience in pasta with faba accounting for 50% of its total protein. Rosa-Sibakov *et al.* (2016) found 11% cooking loss in pasta made exclusively from faba, slightly less than in the present study (14%), but identical pasta resilience of 0.41. The unique ability of gluten to form a protein network is the primary factor responsible for the reduced cooking loss and the good textural properties of wheat pasta (Matsuo, Bradley & Irvine, 1972; Matsuo & Irvine, 1970). The incorporation of non-gluten material, such as faba proteins, in pasta dilutes the gluten network and weakens its overall structure, as seen in SE-HPLC section, at least partially explaining the decrease in pasta resilience and the cooking loss. Torres, Frias, Granito, Guerra and Vidal-Valverde (2007) and RayasDuarte *et al.* (1996) also attributed the higher release of solids into the cooking water to the dilution of gluten network in a 5-30% lupin enriched pasta. In addition, the presence in faba flour of more fibers than in wheat semolina (11.7 versus 2.4 g/100g, db) may also have helped weaken the whole pasta structure when increasing amounts of faba were included in the pasta. According to Padalino *et al.* (2014) and Petitot *et al.* (2010b), the inclusion of pea fibers indeed promoted the formation of discontinuities or cracks inside the pasta strand, resulting in a low sensory elastic recovery.

277 In comparison to LT drying, when increasing proportions of faba were included, VHT drying
 278 linearly decreased the cooking loss and increased the pasta resilience in all faba enriched
 279 pasta. The strengthening of pasta protein network by VHT drying (demonstrated in the SE-
 280 HPLC section), which enabled improved entrapping of starch granules, could contribute to
 281 this overall improvement in pasta quality as observed by Petitot *et al.* (2010b) in a
 282 wheat/legume mixed pasta equivalent to our F50 pasta. We demonstrated that the reduction in
 283 cooking loss and improvement in pasta resilience under VHT vs. LT drying were even more
 284 pronounced with an increase in the concentration of F-protein in pasta due to the additional
 285 reactivity of faba proteins notably through the creation of disulfide linked protein (see SE-
 286 HPLC section) under VHT drying. Conversely, VHT drying did not reduce cooking loss or
 287 enhance the resilience of F0 pasta. In addition, even if VHT allowed faba pasta to recover
 288 higher resilience, this resilience did not go above the threshold value reached for a LT or VHT
 289 dried 100% wheat pasta.

290

291 **4. Trypsin inhibitory activity and *in-vitro* protein digestibility**

292 The initial TIA measured in the raw blends used for pasta production was 0, 3.92, 6.35 and
 293 7.84 mg/g (db) respectively in F0, F50, F80 and F100 (results not shown). In cooked pasta
 294 (table 3), TIA increased significantly ($p < 0.05$) following the order of F-protein incorporation
 295 to reach a maximum value of 2.28 mg/g of cooked pasta in F100. Therefore, up to the cooking
 296 step, pasta processing decreased TIA dramatically (up to 6.4 fold), as already reported in the
 297 literature (Zhao *et al.*, 2005). The decrease in TIA was more pronounced in F50 and F80 (both
 298 84%) than in F100 (71%). Trypsin inhibitors are proteins with a compact structure stabilized
 299 through disulfide bonds (Mueller & Weder, 1989). The lower free sulfhydryl in gluten-free
 300 F100 pasta probably reduced its ability to initiate unfolding of the trypsin inhibitor by
 301 interaction with its disulfide bonds during processing (Friedman, Grosjean & Zahnley, 1982).

302 Eighteen, 20 and 3 mg of TIA per gram of raw black-gram, lentil and faba grains
 303 (respectively) are reported in the literature (Makkar, Becker, Abel & Pawelzik, 1997;
 304 Vasagam & Rajkumar, 2011), which are all higher than those obtained for our cooked pasta.
 305 The use of VHT drying had less effect (F-value = 12) but nevertheless had a significant effect
 306 on TIA than the concentration of F-protein (F-value = 168). VHT drying decreased TIA
 307 slightly but significantly ($p=0.005$) in the pasta. The activation of sulfhydryl-disulfide
 308 interchanges under VHT drying probably modified the structure of the trypsin inhibitor. No
 309 effect of the interaction between drying temperature and the pasta formulation was observed
 310 on TIA.
 311 The degree of protein hydrolysis ($^{\circ}\text{H}$) of cooked pasta is presented in table 3. Increasing F-
 312 protein in pasta significantly increased ($p<0.05$) the $^{\circ}\text{H}$ of the protein in the pasta from 42% to
 313 52%, in the order $F0<F50<F80<F100$. This could be related to the linear weakening of the F
 314 protein network with an increase in the F-protein content in pasta observed by SE-HPLC
 315 analyses. In addition to increased protein hydrolysis when 0% to 100% faba flour was
 316 incorporated in the pasta, other nutritional changes were observed including an increase in
 317 resistant starch (from 0.58 ± 0.01 to 1.16 ± 0.01 g per 100 g of cooked pasta) and a slowdown
 318 in starch digestion, with the percentage of rapidly and slowly available glucose decreasing
 319 from $67.0 \pm 0.7\%$ to $61.83 \pm 0.95\%$ (of available carbohydrates) and increasing from $32.4 \pm$
 320 0.7% to $36.4 \pm 0.95\%$ (of available carbohydrates), respectively (Greffeuille *et al.*, 2015;
 321 Laleg *et al.*, 2016c). The low *in-vitro* glycemic index and the higher protein digestibility
 322 resulting from incorporation of legume flour could make legume enriched pasta highly
 323 advantageous from a nutritional point of view.
 324 VHT tended to increase the $^{\circ}\text{H}$ in all pasta containing F-protein ($p=0.054$), which was
 325 surprising as it increased the percentage of covalently linked proteins in all pasta. However,
 326 this could be due to the lower TIA recorded in the VHT-pasta than in LT-pasta.

5. Sensory evaluation

5.1. Liking scores

Analysis of variance showed that the variants of pasta were perceived significantly different in terms of liking ($F = 3.56$, $p = 0.04$). Overall, the hedonic scores (table 4) were quite low, which can be explained by the fact the pasta was presented with no butter or sauce. F0-LT was the best liked pasta, and S-GF pasta was the least liked. The other pasta were close. F80-LT and S-WW pasta tended to be more liked than F100-LT and F100-VHT. F80-LT was the best compromise in terms of preferences.

The analysis also underlined a significant bite effect ($F = 8.99$, $p = 0.0005$). The liking scores of all pasta decreased for bite (the LSMeans for the first, the second and the third bites were 3.98, 3.85 and 3.73, respectively). However, the difference was less clear for F0-LT.

There was also a significant effect of the type of consumer ($F=7.33$, $p = 0.0073$): on average, regular consumers of whole wheat pasta gave higher liking scores (LSMeans = 4.25) than regular consumers of classical pasta (LSMean = 3.46). The product by type of consumer interaction was not significant, showing that the overall ranking of the products based on the liking scores was consistent between the two types of consumers. However, S-WW pasta was better liked by the regular consumers of whole wheat pasta (LSMean = 5.06) than by the regular consumers of classical pasta (LSMean = 3.10).

5.2. TDS measurements

The TDS curves (appendix 1) show very different temporal profiles. The best liked pasta (F0-LT) and the least liked one (S-GF) mainly differed in texture: the S-GF pasta had a firmer and more elastic attack and no stickiness, contrary to the F0-LT pasta. The best liked F-pasta (F80-LT) appears to be more complex than F100-LT pasta and was not dominated by

firmness, contrary to F100-VHT pasta. In addition, the legume flavor was less dominant in F80-LT pasta. F100-LT had a less firm and a less elastic texture than F100-VHT, probably related to the lack in resilience measured by the instrumental method in F100-LT (textural property section).

Figure 4 shows the results of canonical variate analysis. The projections of the three bites of each variant are close, revealing very few differences in the perception of each product in progressive bites. S-GF pasta was characterized by longer dominance duration of white cereal flavor and of an elastic but firm texture. F0-LT pasta was mainly characterized by longer dominance duration of white cereal flavor and of stickiness. F100-VHT pasta was characterized by longer dominance of the legume flavor and by a firm texture. F80-LT pasta, F100-LT and S-WW pasta were close. They were longer dominated by whole wheat and legume flavors, but the variant F80-LT was perceived to be stickier longer than the two other variants.

4. Conclusion

In this study, the relation between the structure of protein and the cooking, nutritional and sensory properties of faba (F) enriched pasta was investigated. We demonstrated for the first time that the incorporation of F-protein linearly weakened the protein network structure of low temperature (LT) dried pasta, by diluting the gluten network without creating any additional covalent interactions between gluten and F-protein. We also demonstrated that the weakening of the protein network structure could be responsible for the increase in the *in-vitro* protein digestion. However, it altered the integrity of the pasta during cooking as well as its resilience. As a result, F-pasta were less appreciated than the traditional wheat pasta. Very high temperature (VHT) drying strengthened the protein structure of pasta, resulting in increased integrity and better resilience of all F-pasta without altering their *in-vitro* protein digestibility. Consequently, VHT drying can be used to improve the cooking properties of

380 legume pasta. Interestingly, appreciation of legume pasta containing 80% or 100% F-protein
381 was similar to that of commercial counterparts made of whole wheat or gluten-free cereal.
382 The promising nutritional and sensory qualities of legume pasta thus make them an interesting
383 model, rich in good quality proteins, or gluten-free suitable for gluten intolerant people.
384

ACCEPTED MANUSCRIPT

5. Acknowledgments

The authors are very grateful to A.-L. Loiseau (CSG, Dijon), and G. Conéjéro (INRA, Montpellier, France) for sensory analysis and access to PHIV facilities, respectively. The authors thank J. Bonicel, T.-M. Lasserre and D. Cassan (INRA Montpellier, France) for their technical assistance. This work was carried out under the VEGAGE project that received the financial support of the “Qualiment Institut Carnot”.

6. References

- Abecassis, J., Abbou, R., Chaurand, M., Morel, M.H., Vernoux, P. (1994). Influence of extrusion conditions on extrusion speed, temperature, and pressure in the extruder and on pasta quality. *Cereal Chemistry*, **71**(3), 247-253.
- Cunin, C., Handschin, S., Walther, P., Escher, F. (1995). Structural-changes of starch during cooking of durum-wheat pasta. *Lebensmittel-Wissenschaft und- Technologie-Food Science and Technology*, **28**(3), 323-328.
- De Zorzi, M., Curioni, A., Simonato, B., Giannattasio, M., Pasini, G. (2007). Effect of pasta drying temperature on gastrointestinal digestibility and allergenicity of durum wheat proteins. *Food Chemistry*, **104**(1), 353-363.
- Duranti, M. (2006). Grain legume proteins and nutraceutical properties. *Fitoterapia*, **77**(2), 67-82.
- Friedman, M., Grosjean, O.K.K., Zahnley, J.C. (1982). Inactivation of soya bean trypsin-inhibitors by thiols. *Journal of the Science of Food and Agriculture*, **33**(2), 165-172.
- Greffeulle, V., Marsset-Baglieri, A., Molinari, N., Cassan, D., Sutra, T., Avignon, A., Micard, V. (2015). Enrichment of pasta with faba bean does not impact glycemic or insulin response but can enhance satiety feeling and digestive comfort when dried at very high temperature. *Food & Function*, **6**(9), 2996-3005.
- Icard-Verniere, C., Feillet, P. (1999). Effects of mixing conditions on pasta dough development and biochemical changes. *Cereal Chemistry*, **76**(4), 558-565.
- Laleg, K., Barron, C., Sante-Lhoutellier, V., Walrand, S., Micard, V. (2016a). Protein enriched pasta: structure and digestibility of its protein network. *Food & Function*, **7**(2), 1196-1207.
- Laleg, K., Cassan, D., Abecassis, J., Micard, V. 2016b. Procédé de fabrication de pâte destinée à l'alimentation humaine et/ou animale comprenant au moins 35% de légumineuse. Institut national de la recherche agronomique (INRA) - centre international d'études supérieures en sciences agronomiques (SupAgro). France. WO2016097328 A1. 23 juin 2016., Google Patents.
- Laleg, K., Cassan, D., Barron, C., Prabhasankar, P., Micard, V. (2016c). Structural, Culinary, Nutritional and Anti-Nutritional Properties of High Protein, Gluten Free, 100% Legume Pasta. *PLoS ONE* **11**(9).
- Lenfant, F., Loret, C., Pineau, N., Hartmann, C., Martin, N. (2009). Perception of oral food breakdown. The concept of sensory trajectory. *Appetite*, **52**(3), 659-667.
- Makkar, H.P.S., Becker, K., Abel, H., Pawelzik, E. (1997). Nutrient contents, rumen protein degradability and antinutritional factors in some colour- and white-flowering cultivars of *Vicia faba* beans. *Journal of the Science of Food and Agriculture*, **75**(4), 511-520.
- Matsuo, R.R., Bradley, J.W., Irvine, G.N. (1972). Effect of protein content on the cooking quality of spaghetti. *Cereal Chemistry*, **49**(6), 707-711.
- Matsuo, R.R., Irvine, G.N. (1970). Effect of gluten on cooking quality of spaghetti. *Cereal Chemistry*, **47**(2), 173-180.

- Meilgaard, M.C., Civille, G.V., Carr, B.T. (2006). Sensory evaluation techniques (3rd ed.). Boca Raton: CRC Press LLC.
- Moore, S., Spackman, D.H., Stein, W.H. (1958). Chromatography of amino acids on sulfonated polystyrene resins an improved system. *Analytical Chemistry*, **30**(7).
- Morel, M.H., Dehlon, P., Autran, J.C., Leygue, J.P., Bar-L'Helgouac'h, C. (2000). Effects of temperature, sonication time, and power settings on size distribution and extractability of total wheat flour proteins as determined by size-exclusion high-performance liquid chromatography. *Cereal Chemistry*, **77**(5), 685-691.
- Mueller, R., Weder, J.K.P. (1989). Isolation and characterization of 2 trypsin-chymotrypsin inhibitors from lentil seeds (*Lens culinaris Medik*). *Journal of Food Biochemistry*, **13**(1), 39-63.
- Multari, S., Stewart, D., Russell, W.R. (2015). Potential of fava bean as future protein supply to partially replace meat intake in the human diet. *Comprehensive Reviews in Food Science and Food Safety*, **14**(5), 511-522.
- Padalino, L., Mastromatteo, M., Lecce, L., Spinelli, S., Conto, F., Del Nobile, M.A. (2014). Chemical composition, sensory and cooking quality evaluation of durum wheat spaghetti enriched with pea flour. *International Journal of Food Science & Technology*, **49**(6), 1544-1556.
- Pasini, G., Simonato, B., Giannattasio, M., Peruffo, A.D.B., Curioni, A. (2001). Modifications of wheat flour proteins during *in vitro* digestion of bread dough, crumb, and crust: An electrophoretic and immunological study. *Journal of Agricultural and Food Chemistry*, **49**(5), 2254-2261.
- Petitot, M., Barron, C., Morel, M.-H., Micard, V. (2010a). Impact of legume flour addition on pasta structure: consequences on its *in vitro* starch digestibility. *Food Biophysics*, **5**(4), 284-299.
- Petitot, M., Boyer, L., Minier, C., Micard, V. (2010b). Fortification of pasta with split pea and faba bean flours: Pasta processing and quality evaluation. *Food Research International*, **43**(2), 634-641.
- Petitot, M., Brossard, C., Barron, C., Larre, C., Morel, M.H., Micard, V. (2009). Modification of pasta structure induced by high drying temperatures. Effects on the *in vitro* digestibility of protein and starch fractions and the potential allergenicity of protein hydrolysates. *Food Chemistry*, **116**(2), 401-412.
- Pineau, N., Schlich, P., Cordelle, S., Mathonniere, C., Issanchou, S., Imbert, A., . . . Kosterf, E. (2009). Temporal Dominance of Sensations: Construction of the TDS curves and comparison with time-intensity. *Food Quality and Preference*, **20**(6), 450-455.
- Prochazkova, S., Varum, K.M., Ostgaard, K. (1999). Quantitative determination of chitosans by ninhydrin. *Carbohydrate Polymers*, **38**(2), 115-122.
- RayasDuarte, P., Mock, C.M., Satterlee, L.D. (1996). Quality of spaghetti containing buckwheat, amaranth, and lupin flours. *Cereal Chemistry*, **73**(3), 381-387.
- Rosa-Sibakov, N., Heinio, R.-L., Cassan, D., Holopainen-Mantila, U., Micard, V., Lantto, R., Sozer, N. (2016). Effect of bioprocessing and fractionation on the structural, textural and sensory properties of gluten-free faba bean pasta. *LWT - Food Science and Technology*, **67**, 27-36.
- Torres, A., Frias, J., Granito, M., Guerra, M., Vidal-Valverde, C. (2007). Chemical, biological and sensory evaluation of pasta products supplemented with alpha-galactoside-free lupin flours. *Journal of the Science of Food and Agriculture*, **87**(1), 74-81.
- Vasagam, K.P.K., Rajkumar, M. (2011). Beneficial influences of germination and subsequent autoclaving of grain legumes on proximate composition, antinutritional factors and apparent digestibility in black tiger shrimp, *Penaeus monodon Fabricius*. *Aquaculture Nutrition*, **17**(2), E188-E195.
- Wood, J.A. (2009). Texture, processing and organoleptic properties of chickpea-fortified spaghetti with insights to the underlying mechanisms of traditional durum pasta quality. *Journal of Cereal Science*, **49**(1), 128-133.
- Zhao, Y.H., Manthey, F.A., Chang, S.K.C., Hou, H.J., Yuan, S.H. (2005). Quality characteristics of spaghetti as affected by green and yellow pea, lentil, and chickpea flours. *Journal of Food Science*, **70**(6), S371-S376.

481

482

ACCEPTED MANUSCRIPT

483 Figure legends

484

485 **Figure 1.** Changes in sodium dodecyl sulphate (SDS, A), dithioerythritol (DTE, B) soluble
486 proteins and insoluble protein (non-extractable, C) from pasta dried at low temperature (LT)
487 or very high temperature (VHT), as a function of the percentage of faba bean (F) protein in
488 the pasta.

489 Experimental data (means of three replicates): \diamond LT; \blacklozenge VHT. Formulation: significant effect
490 ($p < 0.05$) on SDS and DTE-soluble protein; Drying: significant effect ($p < 0.05$) on SDS,
491 DTE-soluble and non-extractable protein.

492 Best fit (y): --- LT; —VHT.

493 - SDS-soluble protein: $y_{LT} = 0.24x + 70.39$; $R^2 = 1.00$, $y_{VHT} = 0.42x + 22.40$; $R^2 = 1.00$.

494 - DTE-soluble protein : $y_{LT} = -0.25x + 30.69$; $R^2 = 0.99$, $y_{VHT} = -0.36x + 69.12$; $R^2 = 0.99$.

495 - Non-extractable protein : $y_{VHT} = -0.06x + 8.61$; $R^2 = 0.98$.

496

497 **Figure 2.** Light microscopy of cooked pasta containing 100% wheat protein and dried at low
498 temperature (Top panels F0-LT); and pasta containing 100% faba protein and dried at low
499 temperature (Middle panels F100-LT) and very high temperature (bottom panels F100-VHT).
500

501 **Figure 3.** Changes in cooking loss (A) and resilience (B) of cooked pasta dried at low
502 temperature (LT) or very high temperature (VHT) as a function of the percentage of faba bean
503 (F) protein in pasta. \diamond LT; \blacklozenge VHT. Cooking losses are means of three replicates. Resilience is
504 the mean of six replicates. Formulation and drying had a significant effect ($p < 0.05$) on
505 cooking loss and resilience.

506 Best fit (y): --- LT; —VHT.

507 - Cooking loss: $y_{LT} = 0.08x + 5.55$; $R^2 = 0.94$, $y_{VHT} = 0.04x + 5.29$; $R^2 = 0.95$.

508 - Resilience: $y_{LT} = -0.002x + 0.59$; $R^2 = 0.94$.

509 **Figure 4.** Canonical variate analysis (83.1%) based on the dominance durations of the TDS
510 attributes.

Tables

Table 1. Formulation of pasta and protein composition of pasta made from different mixtures of wheat (W) semolina and F (faba) flour; and the lysine and cysteine contents of pasta dried at low temperature (LT) and very high temperature (VHT).

Amounts of raw materials (g/100g, db)	F0	F50	F80	F100
W-semolina	100	65	30	0
F-flour	0	35	70	100
Protein composition				
Total protein content (g/100g of pasta, db) ^a	13.1 ± 0.0	16.9 ± 0.1	20.7 ± 0.0	24.0 ± 0.1
W-protein (g/100g of pasta, db) ^b	13.1	8.5	3.9	0.0
F-protein (g/100g of pasta, db) ^b	0.0	8.4	16.8	24.0
W/F-protein ratio (g/g) ^b	100/0	50/50	20/80	0/100
Lysine amino acid (mg/g protein) ^a				
LT-dried pasta	20.5 ± 0.6	38.6 ± 0.2	55.0 ± 0.5	65.1 ± 0.3
VHT-dried pasta	20.3 ± 1.8	33.4 ± 1.1	52.4 ± 3.0	60.3 ± 1.3
Cysteine amino acid (mg/g protein) ^a				
LT-dried pasta	17.2 ± 0.1	14.8 ± 0.6	10.4 ± 0.5	9.6 ± 0.7
VHT-dried pasta	17.4 ± 0.2	15.4 ± 0.3	10.4 ± 0.4	8.8 ± 0.3

^a Analyses were performed in duplicate.^b Results obtained by calculation according to the ratio of raw materials and their protein composition.

Table 2. Temporal dominance of sensation (TDS) list of attributes with their definitions and/or references

Attribute	Type	Definition	References
Firm	Texture	Firmness, chewing resistance	/
Floury	Texture	Like texture of flour in mouth	/
Sticky, pasty	Texture	Sticks to teeth and palate	/
Elastic	Texture	Deforms without breaking	/
Rough	Texture	Irregularities perceived at the surface of the pasta (not smooth)	/
Salty	Taste	Salty taste	/
Legume	Flavor	Flavor of lentils, beans, chickpeas, etc.	Cooked lentils, cooked beans, etc.
White cereal	Flavor	Flavor of white flour, refined wheat	White flour
Whole cereal	Flavor	Flavor of whole-wheat flour, buckwheat	Whole-wheat flour, cooked buckwheat
Grilled	Flavor	Grilled and toasty flavor	/

Comment citer ce document :

Laleg, K., Barron, C., Cordelle, S., Schlich, P., Walrand, S., Micard, V. (Auteur de correspondance) (2017). How the structure, nutritional and sensory attributes of pasta made from legume flour is affected by the proportion of legume protein. LWT - Food Science and Technology, 79, 471-478. DOI : 10.1016/j.lwt.2017.01.069

Table 3. Two-way analysis of variance (ANOVA) of trypsin inhibitory activity (TIA, mg/g db) and the degree of *in-vitro* protein hydrolysis ($^{\circ}\text{H}$; % of total protein) in cooked pasta containing different concentration of faba bean protein. F0, F50, F80 and F100 present pasta in which 0, 50, 80 and 100 % (respectively) of total proteins originated from faba bean.

Analysis of variance ^a			Comparison of means-LSD test at the 5% significance ^b							Pooled standard deviation
			Effect of F-protein concentration				Effect of drying			
			F0	F50	F80	P100	LT	VHT		
Effects	p-value	F-value								
TIA (n=3)	A : F-protein concentration	0.000	168	ND	0.61 ^a	1.03 ^b	2.28 ^c			0.21
	B : Drying	0.005	12					1.44 ^a	1.17 ^b	0.77
	Interaction : A×B	0.480	0.8							
°H (n=4)	A : F-protein concentration	0.000	75	42 ^a	46 ^b	48 ^c	52 ^d			2
	B : Drying	0.054	4					46 ^a	47 ^a	4
	Interaction : A×B	0.416	1							

^a Two-way ANOVA was performed using F-protein concentration and pasta drying temperature as factors

^b Values in the same row with the same lower case letters are not significantly different ($P>0.05$). For each effect analyzed, the mean value for all conditions tested for the other effect is given.

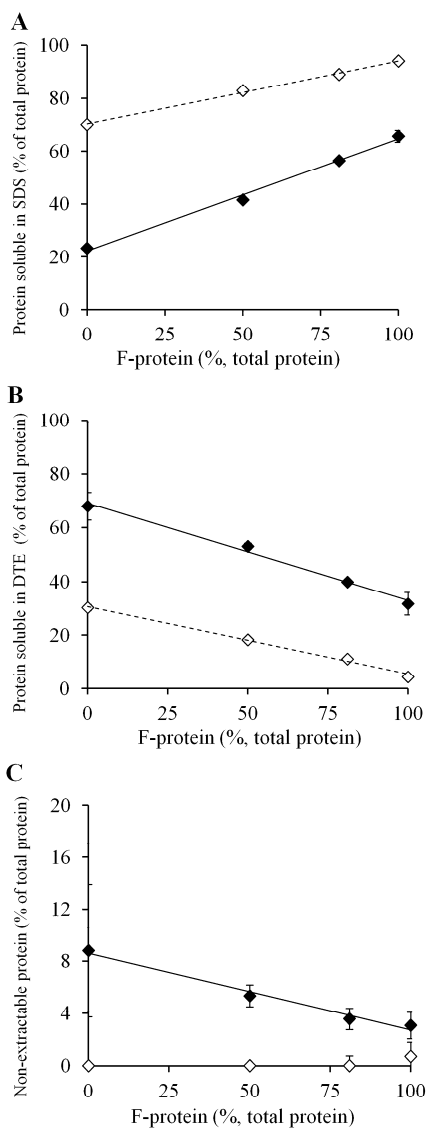
ND: not detected by the method used.

Table 4. Average liking scores for the different variants of pasta (LSMeans).

Pasta	Average liking score (n=43)
F0-LT	4.88 ^a
S-WW	4.08 ^{ab}
S-GF	2.81 ^c
F80-LT	3.95 ^{ab}
F100-LT	3.72 ^{bc}
F100-VHT	3.67 ^{bc}

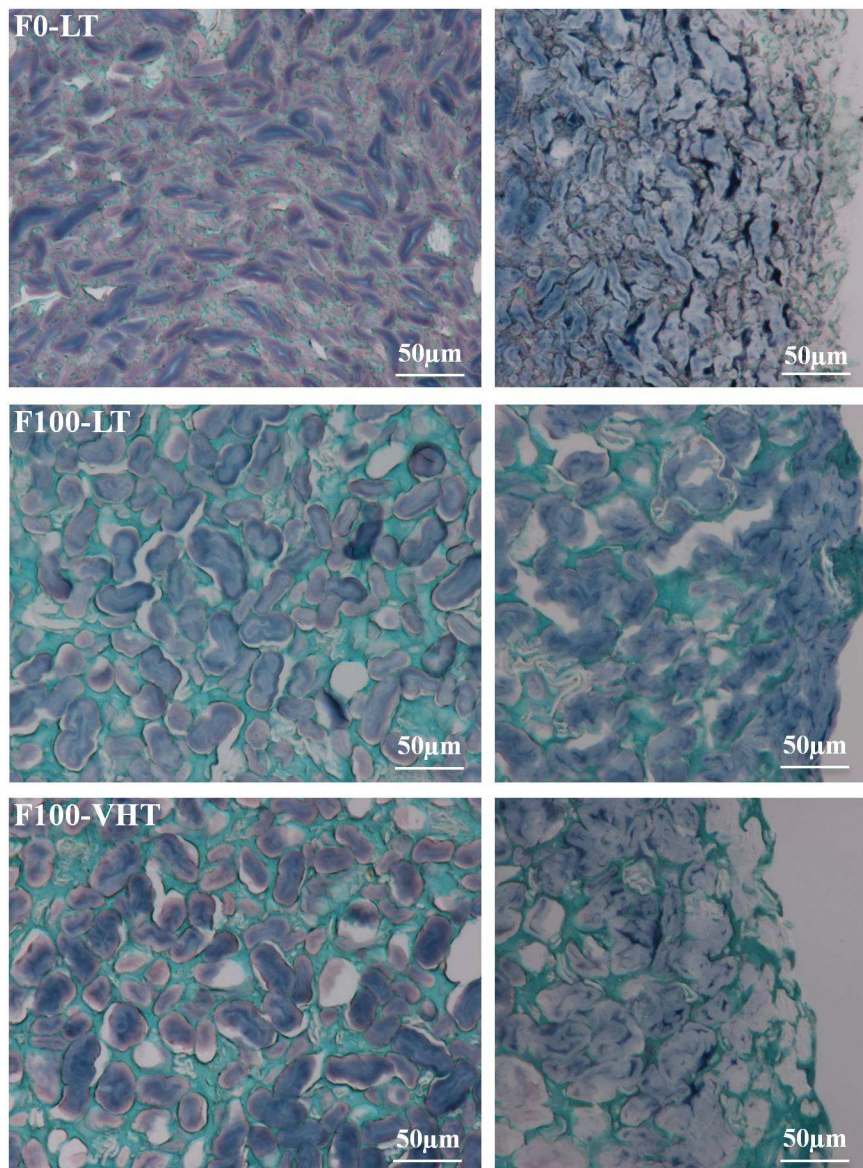
Variants with the same letter are not significantly different. Pooled standard deviation: 2.33 (95% confidence intervals).

ACCEPTED MANUSCRIPT



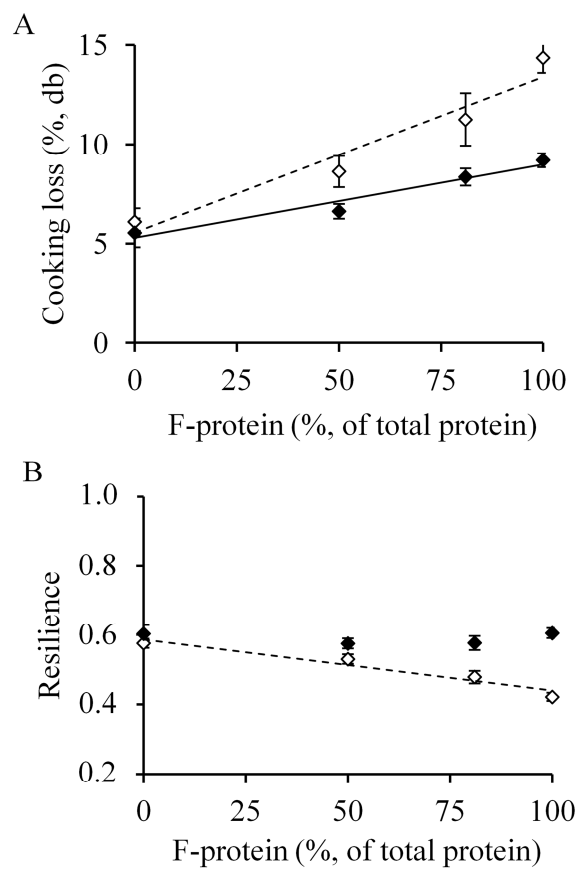
Comment citer ce document :

Laleg, K., Barron, C., Cordelle, S., Schlich, P., Walrand, S., Micard, V. (Auteur de correspondance) (2017). How the structure, nutritional and sensory attributes of pasta made from legume flour is affected by the proportion of legume protein. *LWT - Food Science and Technology*, 79, 471-478. DOI : 10.1016/j.lwt.2017.01.069



Comment citer ce document :

Laleg, K., Barron, C., Cordelle, S., Schlich, P., Walrand, S., Micard, V. (Auteur de correspondance) (2017). How the structure, nutritional and sensory attributes of pasta made from legume flour is affected by the proportion of legume protein. LWT - Food Science and Technology, 79, 471-478. DOI : 10.1016/j.lwt.2017.01.069



Comment citer ce document :

Laleg, K., Barron, C., Cordelle, S., Schlich, P., Walrand, S., Micard, V. (Auteur de correspondance) (2017). How the structure, nutritional and sensory attributes of pasta made from legume flour is affected by the proportion of legume protein. *LWT - Food Science and Technology*, 79, 471-478. DOI : 10.1016/j.lwt.2017.01.069

Laleg, K., Barron, C., Cordelle, S., Schlich, P., Walrand, S., Micard, V. (Auteur de correspondance) (2017). How the structure, nutritional and sensory attributes of pasta made from legume flour is affected by the proportion of legume protein. *LWT - Food Science and Technology*, 79, 471-478. DOI : 10.1016/j.lwt.2017.01.069

Highlights

- Pasta enrichment in faba linearly weakens its protein network
- Increasing faba protein concentration in pasta enhances its *in-vitro* digestion
- High-temperature drying strengthens legume pasta structure
- Increasing drying temperature does not alter legume pasta protein digestibility
- Good quality protein or gluten-free legume pasta were appreciated by consumers

ACCEPTED MANUSCRIPT

Comment citer ce document :

Laleg, K., Barron, C., Cordelle, S., Schlich, P., Walrand, S., Micard, V. (Auteur de correspondance) (2017). How the structure, nutritional and sensory attributes of pasta made from legume flour is affected by the proportion of legume protein. LWT - Food Science and Technology, 79, 471-478. DOI : 10.1016/j.lwt.2017.01.069