



HAL
open science

Breeding success of a marine central place forager in the context of climate change: A modeling approach

Lauriane Massardier-Galatà, Jennifer Morinay, Frédéric Bailleul, Eric Wajnberg, Christophe Guinet, Patrick Coquillard

► To cite this version:

Lauriane Massardier-Galatà, Jennifer Morinay, Frédéric Bailleul, Eric Wajnberg, Christophe Guinet, et al.. Breeding success of a marine central place forager in the context of climate change: A modeling approach. PLoS ONE, 2017, 12 (3), pp.e0173797. 10.1371/journal.pone.0173797 . hal-01502770

HAL Id: hal-01502770

<https://hal.science/hal-01502770>

Submitted on 26 May 2020

HAL is a multi-disciplinary open access archive for the deposit and dissemination of scientific research documents, whether they are published or not. The documents may come from teaching and research institutions in France or abroad, or from public or private research centers.

L'archive ouverte pluridisciplinaire **HAL**, est destinée au dépôt et à la diffusion de documents scientifiques de niveau recherche, publiés ou non, émanant des établissements d'enseignement et de recherche français ou étrangers, des laboratoires publics ou privés.



Distributed under a Creative Commons Attribution 4.0 International License

RESEARCH ARTICLE

Breeding success of a marine central place forager in the context of climate change: A modeling approach

Lauriane Massardier-Galatà^{1,2*}, Jennifer Morinay³, Frédéric Bailleul³, Eric Wajnberg², Christophe Guinet³, Patrick Coquillard^{1,2}

1 Université Côte d'Azur, Nice, France, **2** Université Côte d'Azur, INRA, CNRS, ISA, Valbonne-Sophia Antipolis, France, **3** Centre d'Etudes Biologiques de Chizé, CNRS, Villiers en Bois, France

* lauriane.massardier@gmail.fr



Abstract

In response to climate warming, a southward shift in productive frontal systems serving as the main foraging sites for many top predator species is likely to occur in Subantarctic areas. Central place foragers, such as seabirds and pinnipeds, are thus likely to cope with an increase in the distance between foraging locations and their land-based breeding colonies. Understanding how central place foragers should modify their foraging behavior in response to changes in prey accessibility appears crucial. A spatially explicit individual-based simulation model (Marine Central Place Forager Simulator (MarCPFS)), including bio-energetic components, was built to evaluate effects of possible changes in prey resources accessibility on individual performances and breeding success. The study was calibrated on a particular example: the Antarctic fur seal (*Arctocephalus gazella*), which alternates between oceanic areas in which females feed and the land-based colony in which they suckle their young over a 120 days rearing period. Our model shows the importance of the distance covered to feed and prey aggregation which appeared to be key factors to which animals are highly sensitive. Memorization and learning abilities also appear to be essential breeding success traits. Females were found to be most successful for intermediate levels of prey aggregation and short distance to the resource, resulting in optimal female body length. Increased distance to resources due to climate warming should hinder pups' growth and survival while female body length should increase.

OPEN ACCESS

Citation: Massardier-Galatà L, Morinay J, Bailleul F, Wajnberg E, Guinet C, Coquillard P (2017) Breeding success of a marine central place forager in the context of climate change: A modeling approach. PLoS ONE 12(3): e0173797. <https://doi.org/10.1371/journal.pone.0173797>

Editor: Elliott Lee Hazen, University of California Santa Cruz, UNITED STATES

Received: May 25, 2016

Accepted: February 27, 2017

Published: March 29, 2017

Copyright: © 2017 Massardier-Galatà et al. This is an open access article distributed under the terms of the [Creative Commons Attribution License](https://creativecommons.org/licenses/by/4.0/), which permits unrestricted use, distribution, and reproduction in any medium, provided the original author and source are credited.

Data Availability Statement: All data used to initialize simulations are given either in supporting information or in referenced literature.

Funding: This work was supported by the French ANR (Agence Nationale de la Recherche, MyctO-3D-MAP, SVSE 7 2011, Y. Chereil). Ph.D. grant of the French Provence-Alpes-Côte d'Azur region supported this work.

Competing interests: The authors have declared that no competing interests exist.

Introduction

Climate change scenarios supported by direct *in situ* observations have predicted an average sea surface temperature (SST) rise of 1–6°C by 2100 [1, 2], which could modify the distribution and habitat of many marine species [1–4]. Change in ocean heat content, mixed-layer depth, stratification and acidification have been noticed with direct consequences on ocean productivity [5, 6]. Polar oceans in both hemispheres are warming at a faster rate than elsewhere on earth [3] with direct effect on ocean circulation and location of frontal systems [7–9].

Large efforts are dedicated to quantify physical oceanographic changes. However, it is critical to assess the consequences of such changes on marine ecosystems and populations dynamic. In

that context, it is crucial to understand and predict how changes in prey distribution and abundance, in response to environmental changes could impact the energy balance of marine top predators. To better understand population changes, it is of utmost importance to explore both the primary causes and underlying behavioral mechanisms impacting on individual fitness. Not to say how fitness is highly dependent on the ability of animals to feed in their environment.

A key issue is whether and how quickly predators can compensate for effects of environmental changes through short-term acclimatization or long-term evolutionary adaptation across generations and how phenotypic traits should vary to maximize individual fitness. Phenotypic traits are usually selected under the pressure of multiple environmental constraints [10]. This multiplicity can make it difficult to predict evolutionary trajectories under different prey distribution/abundance scenarios.

Such understanding might be critical to identify species at risk and for ecosystem managements. Pinnipeds and seabirds, which are central place foragers (*i.e.*, they commute between their breeding (central) colony on land and foraging at sea), are constrained by particular distribution ranges of prey. Therefore, during breeding when they are restricted to a central place foraging strategy, pinnipeds such as otariids and non-flying seabirds should be more impacted by changes in prey distribution [8, 11–16]. Consequently, it is necessary to consider possible alterations in the structure of the prey fields in these environments. For instance, within the Southern Oceans, climatic scenarios predict a southward shift of the highly productive Polar Front [17], which separates Subantarctic waters from cold waters of Antarctica, with direct consequences on the foraging and breeding performances of king penguins *Aptenodytes patagonicus* [8] and other marine top predators [18, 19]. How central place foragers should modify their provisioning/foraging behavior to accommodate changes in prey accessibility in relation to their colony? According to the optimal foraging theory, foraging strategies are selected on the basis of maximization of the net energy intake rate [20] with an increase in load size with foraging trip duration for central place foragers [21].

Using computer simulations, we attempted to evaluate the potential changes in the breeding success of a central place forager in relation to foraging conditions that could be affected by climate changes (possible change in abundance or/and aggregation or/and accessibility of prey) and the intrinsic features of the parent (body length, foraging strategies and memorization abilities). To investigate separate and combined influence of these factors on breeding success, this study was calibrated on a particular central place forager model: the Antarctic fur seal (*Arctocephalus gazella* Peters, 1875) from the Kerguelen Islands which might be particularly vulnerable to a shift in the spatial distribution of their foraging ground [12, 13, 19]. Indeed, this species alternates, over its whole lactation period, between oceanic areas in which individuals feed for up to ten days, and short stays (one to three days) at the land-based colony to suckle their young [12, 13, 22–27]. Antarctic fur seals forage mainly on small mesopelagic fishes and can forage all around their central breeding place [22–28]. A large body of data is available for both females and pups. Females are solely responsible for rearing their pup (one per year) [22]. Depending on the environmental conditions, female body length may affect pup's growth, pup mass gain and survival rate [16, 24, 25, 29].

We thus developed a spatially explicit bio-energetic simulator, using the individual-based modeling (IBM) technique [30–32], named MarCPFS for Marine Central Place Forager Simulator. This work mainly aimed at (i) verifying that outcomes were in accordance, at least qualitatively, with the optimal foraging theory predictions, (ii) understanding why and to what extent the possible environmental variations due to climate change could affect central place foragers' survival and breeding success, (iii) testing the existence of optimal values for female body length related to the environmental parameters of our simulations (especially the distance to the resource).

Materials and methods

Study model

Female Antarctic fur seals forage in a complex marine environment, around the Kerguelen Islands (49°00'S, 70°00'E) [12–14, 22–26], in the vicinity of highly productive frontal systems: the Antarctic Polar Frontal Zone, which is delimited southward by the Polar Front and northward by the Subtropical Front [24, 33, 34]. Female fur seals feed almost exclusively at night at depth ranging from 20 to 60 m [24], when their prey resource (lantern fishes, *Myctophyidae*) migrates towards the surface [23, 28].

Antarctic fur seals have one pup per year, which they rear from early December to late March [12, 22, 35]. This period, referred to as the “rearing period”. We can roughly distinguish several phases: (i) the prospective prenatal period (15 days), during which females move around the island, explore the environment and memorize the richest resources locations, (ii) the perinatal period (5 to 7 days): after giving birth, females remain ashore to feed their pup [12, 26, 35, 36], and (iii) the pup-rearing period (lactation period) covering the rest of the simulation (120 days) during which females alternate periods of two to nine days (about 5 days on average) at sea to fish and one to three days ashore to suckle the pup [12, 13, 22–27, 29, 37–40].

Creation of the environmental maps

The first step consisted in creating artificial maps of resources in which females will move. The map, static over time, representing the environment is a 100×100 matrix. Each cell corresponds to a 10×10 km area and the island is set at the center of the map. According to Guinet *et al.* [15] females were found to forage up to 547 km away from the island, with a mean distance of 160 km. We therefore distributed the food resources around the islands within a 500 km radius circle. Female fur seals start foraging extensively beyond the Kerguelen plateau edge [15, 24 and 28]. Moreover, recent works have showed that there are few fishing attempts over the Kerguelen plateau compared to the pelagic zone, suggesting that the plateau is an unsuitable foraging area (40; M. Viviant unpublished data). The first step of the map creation involved computing the Euclidean distance of each cell to the island. Then, all cells more than 500 km away or within the 50 km wide Kerguelen plateau were set to zero abundance. The distance to resources (Dist) represents the inner limit of the highest possible abundance so that there is a gradient of probability (from 0.0 to 1.0) from the edge of the plateau to this limit (S1 Fig). We defined nine possible distances to resources (every 50 km between 100 and 500 km). Maps of prey were randomly drawn using the Gaussian field method (GaussRF function of the R software [41]; RandomField package [42]). To this end, for each map the parameter “scale” of GaussRF defined an aggregation level. We defined eight arbitrary levels of prey aggregation (Aggreg) from dispersed to highly aggregated (*i.e.* 0, 1, 2, 3, 4, 6, 8 and 10; see S1C Fig). For a defined quantity of resource, the lowest level of aggregation (level 0) represents more than 500 patches of about 1.5 cells. The highest level of aggregation (level 10) corresponds to an average of 10 patches of about 67.4 cells. Then, after normalization, a multiplicative coefficient was assigned to each map corresponding to its total abundance level. We defined four levels of abundance (Abund): low, intermediate, high and very high which correspond to average fishing success of approximately 90, 180, 270 and 360 g per hour, respectively.

Simulation model

Entities, state variables and scales. The time step for the simulations was fixed to one hour and day/night alternation (16/8 hours) was taken into account. For each female, four main attributes were embedded in the data structure and were updated every hour: (1) location of the female (X_{seal} , Y_{seal}), (2) her energy (MJ), (3) her decision whether or not to fish and (4)

her decision to return to the island or to continue foraging. The pup energy was updated similarly. Females and pups parameters are characterized by several state variables listed Table 1.

Process overview and scheduling. Several processes can be involved every hour, depending on the period and females' location. MarCPFS processes are shown in the flow chart diagram (Fig 1). During the prospective prenatal period (15 days), the female explores the environment map and memorizes the richest resources locations. At the end of this period the pup is born and the time is set to zero. The simulation starts with both the female and its pup on the island. Every hour, both female's and pup's energetic status were updated (see Maternal

Table 1. Definition of model parameters.

| Symbols | Units | Meaning |
|---------------------------|---------------|---|
| Maps parameters | | |
| Aggreg | | Aggregation level |
| Abund | $g\ h^{-1}$ | Abundance of prey level |
| AvgEnv | | Mean abundance in the non-zero environment |
| th_t | | Threshold in prey abundance for which the probability of fishing is 0.5 |
| Dist | km | Distance to the resource |
| D_{island} | km | Distance separating the female from the island |
| d_{max} | km | Maximal distance travelled |
| Rep_{map} | | Number of the current map replication |
| Females parameters | | |
| Length | cm | Female body length |
| X_{seal} | | x coordinate of the female |
| Y_{seal} | | y coordinate of the female |
| E_{seal} | MJ | Energy of the female |
| E_{init} | MJ | Initial energy of the female |
| E_{max} | MJ | Maximal energy of the female |
| E_{wb} | MJ | Energy needed to return to the colony |
| E_{mh} | MJ | Energy expenditure per hour |
| E_{fish} | MJ | Energy gained by the female during fishing |
| Fmr_{sea} | $W\ kg^{-1}$ | Metabolic rate at sea |
| $Econtent_{seal}$ | $MJ\ kg^{-1}$ | Energy content for a female |
| E_{won} | MJ | Energy gained by the female during a trip |
| W_{init} | kg | Initial mass of the female |
| W_{seal} | kg | Mass of the female |
| SwimD | degrees | Swimming direction taken by the female |
| Mem | | Type of memorization |
| t_s | h | Time already spent at sea for this trip |
| $t_{suckling}$ | h | Time the female has spent to suckle the pup |
| Mta | days | Mean time ashore |
| T_{max} | h | Maximum time allocable to a trip |
| t | h | Time step |
| Rep | | Number of the current seal replication |
| Pup parameters | | |
| E_{pup} | MJ | Energy of the pup |
| $Econtent_{pup}$ | MJ | Energy content for a pup |
| W_{pup} | kg | Mass of the pup |
| $W_{initpup}$ | kg | Initial mass of the pup |
| W_{max} | kg | Maximal mass of the pup |

<https://doi.org/10.1371/journal.pone.0173797.t001>

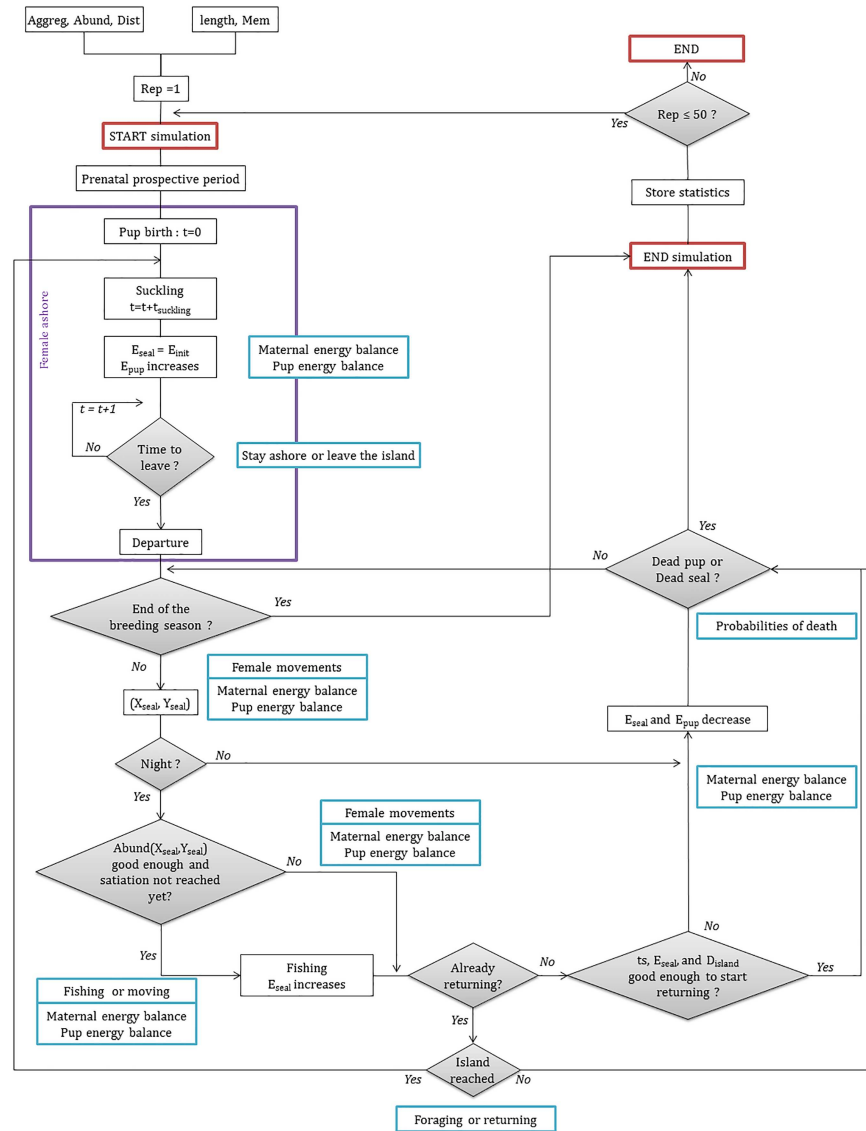


Fig 1. Model flow chart of the rearing period. *Aggreg* = aggregation level; *Abund* = prey abundance level; *Dist* = Distance to the resource; *Length* = female body length; *Mem* = type of memory. (X_{seal}, Y_{seal}) = location of the female in the current time. *Abund* (X_{seal}, Y_{seal}) = prey abundance at (X_{seal}, Y_{seal}) coordinate. *Rep* = number of the current seal replication. *t* = time step; $t_{suckling}$ = time the female has spent to suckle the pup; t_s = time the female has already spent at sea during the current trip; E_{seal} = current energy of the female seal; E_{init} = current initial energy of the female seal; E_{pup} = current energy of the pup; D_{island} = distance separating the female from the island (indirectly the time needed to go back to the island). The purple box corresponds to the periods the female is ashore. The blue boxes correspond to the submodels.

<https://doi.org/10.1371/journal.pone.0173797.g001>

energy balance and Pup energy balance sections below). Once at sea, the female travels directly to reach a memorized favorable feeding area or uses a correlated random walk (CRW) to forage within food-enriched zones or even a simple random walk when searching for new feeding areas (see Female movements section below). Every hour of the simulated period, the female has to make decisions. At night, the female is able to estimate the abundance of the map cell she is visiting and thus to decide either (1) to continue foraging or to return to the island (see Foraging or returning section below) or (2) to fish or to move (see Fishing or moving section below). When at colony, the female has to decide to stay ashore or to return at sea.

Table 2. Initial values of state variables.

| Name | | Value | Units | Source |
|---|-------------------------------------|--|---------------------|----------|
| Map parameters | | | | |
| Aggregation levels | Aggreg | 0, 1, 2, 3, 4, 6, 8 and 10 | | |
| Abundance of prey levels | Abund | 90, 180, 270 and 360 | g h ⁻¹ | |
| Minimal value of abundance cell necessary to decide to fish | | 1.5 (≈ 55 g h ⁻¹) | | |
| Distance to the resource | Dist | 100, 150, 200, 250, 300, 350, 400, 450 and 500 | km | |
| Map replication | Rep _{map} | 10 | | |
| Female parameters | | | | |
| Female body length | Length | 85, 100, 115, 130 and 145 | cm | |
| Type of memorization | Mem | 0 and 1 | | |
| Breeding period duration | | 4 | months | [22] |
| Perinatal duration | | 5–7 | days | [36] |
| Energy content for female | E _{content_{seal}} | 10.59 | MJ kg ⁻¹ | [36] |
| Metabolic rate of the female at sea | FMR _{sea} | 6.09 | W kg ⁻¹ | [36] |
| Satiation rate of the female per feeding | | 7% of energy | MJ | [43] |
| Seal replication | Rep | 50 | | |
| Foraging trip | | | | |
| Maximal distance travelled | d _{max} | 500 | km | [15, 24] |
| Swimming speed | v | 2.11 | m s ⁻¹ | [27, 40] |
| Mean time ashore | M _{ta} | 2 | days | [38] |
| Mean departure time | | 17 | h | [26] |
| Pup | | | | |
| Initial mass of the pup | W _{initpup} | 5.5 | kg | [22] |
| Perinatal mass increase | | 1.5 | kg | [44] |
| Energy content for the pup | E _{content_{pup}} | 8.24 | MJ kg ⁻¹ | [22] |
| Maximal mass | W _{max} | 18 | kg | |
| Mass lost per day | | 2.8% of energy | MJ | [26] |

<https://doi.org/10.1371/journal.pone.0173797.t002>

Submodels. Maternal energy balance—The energetic calculation depends on whether the female is at sea or ashore suckling the pup. When fishing, the energy gained by the female is proportional to the local abundance of prey. Fish intake is controlled by satiation, *i.e.* it cannot exceed 7% of the female’s energy [43] at the end of the former night and cannot exceed its absolute maximal energy E_{max} (; Table 2). Further details concerning energetic aspects and calculations are provided in S1A Text.

While at sea, the female loses energy corresponding to her mass-based metabolic rate at sea (6.09 W kg⁻¹ h⁻¹; [36]). To this value we added the fluid drag force generated by the displacement:

$$DragForce = \frac{1}{2} d \times S \times C \times v^2$$

Where *d* is the water density (1,034.7 g l⁻¹), *S* the cross-sectional area (m²), *C* the drag coefficient and *v* the female speed (2.11 m s⁻¹). The drag force was calculated for females ranging from 85 to 145 cm using a streamlined body shape (S1A Text). We therefore took into account the drag force generated by females when they move, using values ranging from 0.041 MJ m⁻¹ (85 cm-long females) to 0.12 MJ m⁻¹ (145 cm-long females).

Pup energy balance—The mass calculation of the pup depends on whether the female seal is at sea or ashore (S1B Text). The starving pup loses about 0.12% of his energy per hour [26]. After suckling, the energy of the pup increases, as described by Goldsworthy *et al.*[45].

Stay ashore or leave the island—Upon taking the decision to leave the land for a new trip, the female has to consider both the time required to reach the best patch she memorized during the previous trip and the current time. The female leaves her pup at a consistent time, taking into account the constraint of travelling to reach this location at night. Alternatively, females can stay one more night ashore and continue to suckle their pups.

Female movements—Previous theoretical and empirical studies demonstrated that foragers of a wide spectrum of species usually display movement patterns in accordance with a correlated random walk (CRW) [45, 46] and showed that grey seals movements were consistent with the correlated random walk for 48% of the seals tracked by satellite [47]. We compared autocorrelations between angles of simulated trajectories and trajectories obtained by satellite tracking (S2A Fig). In each case we found significant positive correlations between angles of successive time steps (0.302 for simulated trajectories and 0.218 for satellite tracking), but no correlation between angles recorded over wider intervals. Moreover, we implemented a pure random walk and preliminary simulations showed that mortality of both females and pups were so high that the results were incompatible with the persistence of populations (data not shown). We therefore retained the CRW as a reasonable assumption, using a constant swimming speed of 2.11 m s⁻¹ [27] when the female moves horizontally. However, horizontal displacements were considered as negligible when the female was fishing (see Fishing or moving section below), resulting in a lower overall average speed within the foraging areas. A correlated random walk allows the female to estimate prey abundance in each of the cells visited and thus to determine whether there is a gradient between two contiguous visited cells. The female then uses this information to make a decision regarding which direction to go (S1C Text). At the very beginning of the simulation (*i.e.*, the first hour of the prenatal period) the direction was chosen randomly, simulating the behavior of a naïve female.

Fishing or moving—The probability of fishing depends on various parameters. It was set to zero during the day, as lantern fish, their preferred prey, remain in deep waters and are out of reach for the fur seals. During the night, if a female was not at satiety, it was possible for her to fish, depending both on prey abundance and her energy status (Table 2). The satiation scales allometrically with body mass [48] and cannot exceed the maximal energy of the female which is equal to 1.07 times its mass at the end of the former night [43]. The probability of fishing was based on a few assumptions. First, a “poor zone” was defined as a zone where the abundance of prey is inferior to the mean abundance in the non-zero environment (AvgEnv). Second, the more abundant the prey, the higher is the probability for a female to fish. Third, we define the $E_{\text{seal}} / E_{\text{min}}$ ratio where E_{seal} is the current content in energy of the female and E_{min} the limit energy levels below which it dies: the higher this ratio, the lower the probability of fishing in a poor area. This means that females in poor body condition will be more prone to fish on poor quality patches than others. Finally, below a minimal abundance of 1.5 in the cell visited (this value corresponding on average to 55 g of prey catchable in one hour) fishing is not profitable since the expenses due to fishing are higher than the gain. This minimal abundance will allow the female to collect at least $4 \times E_{\text{mh}}$ in one hour (where E_{mh} is the energy expenditure per hour and the constant 4 is the conversion unit of fish mass (g) into kcal; see Maternal energy balance section above). This energy intake rate is profitable as it compensates travel costs, and the non-fishing hours during the day. Finally, the probability to fish is:

$$P(\text{fishing})_{i,t} = \frac{e^{2(\text{prey abundance}_i - th_t)}}{1 + e^{2(\text{prey abundance}_i - th_t)}}$$

Where prey abundance_i is the abundance of prey at time t in the cell i and th_t is a threshold in prey abundance for which the probability of fishing is 0.5 (S1D Text).

Foraging or returning—The decision to return to the island depends on the current females' energy stock, the distance from the colony and the number of hours already spent at sea. E_{wb} is the energy needed for returning to the colony (*i.e.* the intrinsic energy expenditure of the female plus the energy needed to travel back to the island and the energy required for two days ashore to suckle the pup) divided by the maximal energy E_{max} . E is the current energy E_{seal} divided by the maximal energy E_{max} and t_s is the time already spent at sea for this trip, divided by the maximum time T_{max} allocable to a trip. These variables allow computation of a probability to go back to the island (S1E Text).

Probabilities of death—Females and pups have a probability to die which depends on their percentage of energy loss at time t , compared to a reference value. The lethal masses were estimated to be reached when females and pups were respectively weighting 70% and 56% of their reference masses, *i.e.*, the mass at the end of the last suckling period [49]. The 56% of the initial mass at the beginning of a new fasting event was set according to field observations of pup mortality from starvation (C. Guinet, unpublished data) and 70% was set for females as they had already depleted their body store during the lactation period and which represented on average about 4.2 kg for an initial mass of 31.9 kg (*i.e.*, 14% mass loss, [45]). To calculate these probabilities, we used Normal cumulative distributions: $N(70, 0.02)$ for females and $N(56, 0.02)$ for pups. The reference values were the energy after suckling for the pup, and the initial energy of the female (E_{init}), respectively.

Memorizing—Many studies highlighted the importance of spatial memory for foraging efficiency, particularly among mammals [50, 51]. We hypothesized that the likelihood of heading in the same direction was a function of foraging success during the last trip [29]. In MarCPFS, females can remember the location of the richest cell they encountered. If later in the simulation they find a better cell, then that cell becomes the new reference. When they leave the island, females travel towards the reference cell with fidelity calculated on the basis of the energy gained during the previous trip divided by its duration (S1F Text).

Initialization. We defined several energetic variables specific to the females (for example the metabolic rate at sea [36]). These initial values are shown in Table 2. One of the two types of memory was assigned to each female. We considered the following two cases: no memorization at all (Mem0); memorization of the best patch location discovered during the prospective prenatal period and updating of this location throughout the pup-rearing period (Mem1).

The initial values of the foraging behavior such as the mean duration of the trip and the mean duration ashore to suckle the pup were obtained from the literature ([29, 38]; Table 2). We calculated the initial mass of the female from data collected on animals just before their departure from the island (C. Guinet, unpublished data). Equation ($n = 147, R^2 = 0.49$) for initial female mass (kg) was:

$$W_{seal} = 0.5246 \times length - 29.595$$

The female body length was fixed for each simulation (85, 100, 115, 130 or 145 cm). We finally defined several energetic variables specific to the pup (for example the pup's mass lost per day in percent ([24]; Table 2)). The initial mass of the pups was set to 5.5 kg [22].

Model output. Simulation experiment—For each simulation, we used a map where the prey abundance level (four levels; Abund), the aggregation level (eight levels; Aggreg) and the distance to the resource (nine distances; Dist) were fixed (Tables 1 and 2). Each map has been replicated 10 times (Rep_{map}) to generate stochasticity in the repartition of prey (see Creation of environmental maps section). For each simulation, female fur seal can be initialized with a given body length (five lengths; Length) and one type of memorization (two types of

memorization; Mem). Each simulation was repeated 50 times (Rep). In total, 1,440,000 simulations were performed.

Output data—All results are expressed as means \pm SD obtained on the basis of 10 replicated maps. At each hour, we recorded the location of the female (X_{seal} , Y_{seal}) and her energetic status. At the end of each simulation, we recorded whether the female and the pup survived and recorded their respective mass. For the foraging behavior, we considered only females that successfully completed their rearing period and we recorded the mean distance travelled per trip (MeanDTrip), the mean trip duration (MeanTTrip), the number of trips (NbrTrip) and the number of fishing events (NbrFishing) which was simply defined by the number of fishing decisions. Hence, when a female decided to fish (see Fishing or Moving section above), because of the time step we chose, the fishing activity of a single hour was recorded as a unique fishing event. We finally recorded the energy gained by fishing (E_{fish}) during a fishing event.

Female and pup survival—Deaths of both female and pup were recorded in each simulation. To assess the overall reproductive success of the females, we calculated the average success of female-pup pairs (SP) in a given environment, for each of the 10 replicated maps, as follows: $SP = (1 - D_f) \times (1 - D_p)$, where D_f and D_p are the probabilities of death for females and pups, respectively.

Cost/benefit ratio—Biological systems could have, theoretically, an optimal (*i.e.* minimums) cost/benefit ratio (R) in the space of available energy [52]. We thus calculated for each female of each body length:

$$R = \frac{E}{SP}$$

with

$$E = \sum_{t=0}^{t_r} E_t$$

Where E_t is the energy spent during 1 hour and $t_r = 2880$ h is the total simulated duration of the rearing period, *i.e.* 120 days. Confidence interval of this minimum was obtained by the bootstrap method (1000 samples with replacement), fitting on each sample two different expressions and then calculating the 2.5 and 97.5 percentiles of the $\text{Min}[R(l)]$ found. More details are available in [SIG Text](#).

Results

Both environmental and female parameters (Dist, Abund, Aggreg, Mem and Length) substantially modified the mortality and final mass of both the female and her pup. These parameters also influenced several characteristics of the female's foraging behavior: MeanDTrip, MeanTTrip, NbrTrip and NbrFishing. Given the strong linear correlation ($r = 0.99$) between MeanDTrip and MeanTTrip, only the mean distance travelled was used.

Abundance and aggregation of prey

The mortality rates of both females and pups increased with prey aggregation, except in conditions of low prey abundance, where the probability of pup death was always close to 1.0 ([Fig 2A and 2B](#)). Interestingly, the lowest pup mortality rates were observed with intermediate levels of food aggregation, in conditions in which prey abundance was sufficiently high. Female mortality varied most strongly when prey abundance was low. The lowest female mortalities were recorded with aggregation levels 2 and 3.

The success of the female-pup pairs (SP) was also highest for intermediate levels of prey aggregation ([Fig 2C](#)). In such conditions, the mortality rate was $14.5 \pm 0.01\%$ and $63.6 \pm 0.01\%$

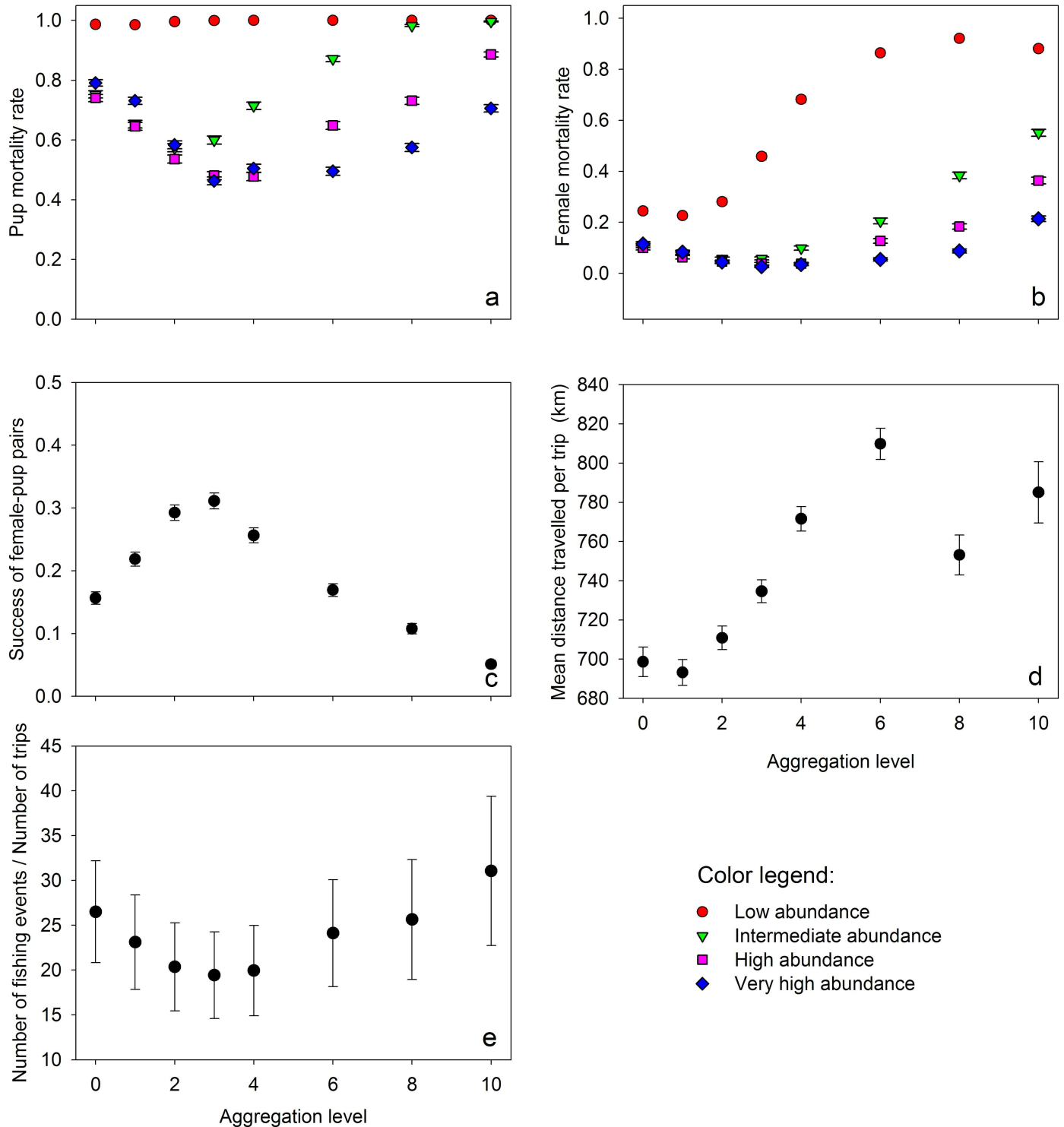


Fig 2. Effect of aggregation level of food resources. Effect (mean \pm SD) of resource aggregation and abundance level on the probability of (a) pups and (b) females death: low (red circles), intermediate (green triangles), high (purple squares) and very high abundance (blue diamonds); $n = 1350$ in each case. (c) Mean (\pm SD) of the success of female-pup pairs (SP) as a function of the level of resource aggregation. (d) Effect (mean \pm SD) of the aggregation level of the prey on the mean distance travelled by trips (MeanDTrip). (e) Effect (mean \pm SD) of the aggregation level of the prey on the number of fishing events per trip (NbrFishing/NbrTrip). For both (d) and (e) we considered only females that successfully completed their rearing period.

<https://doi.org/10.1371/journal.pone.0173797.g002>

for females and their pups, respectively. The corresponding mean final mass of the female across all body lengths was 36.2 ± 0.5 kg and 10.7 ± 0.2 kg for pups, including all tested distances to the resource. However, when retaining an average Dist of 150 km to feed [38, 39], and a female's body length of 115 cm (this length corresponds to the mean female length at Kerguelen Island, C. Guinet, unpublished data.; [24]), simulated females weaned their pups at a mass of 11.0 ± 3.4 kg and reached a final mass of 32.7 ± 0.9 kg in moderate conditions of aggregation (level 3) and intermediate abundance of the prey.

Higher levels of prey aggregation were associated with a longer mean trip distance, up to aggregation levels 6 then MeanDTrip decreased (Fig 2D). Thus, an aggregation level 6 seems to be a critical threshold in terms of both the distance travelled and the time spent at sea per trip (five days: 119 ± 1.3 h). NbrFishing decreased monotonically with Aggreg, from 299.5 ± 1.0 (highly dispersed) to 233.9 ± 1.9 (highly aggregated). The NbrTrip was highest for an aggregation level 3 (14.5 ± 1.0). Finally, with aggregation levels up to 3, NbrFishing steadily decreased, as each successful dive provided a sufficient amount of food (Fig 2E).

Distance to the resource

Distance to the resource had a strong impact on mortality (Fig 3A) and final mass (data not shown) of both the female and her pup. Greater distances were associated with higher mortality (Fig 3A). In extreme cases, in which the distance to the resource was particularly large, the mean final mass of the pup was below its initial mass.

The MeanDTrip over the rearing period was proportional to Dist (from 568.8 ± 3.5 km to $1,010 \pm 8.5$ km, Dist ranging from 100 to 500 km; $R^2 = 0.94$). Similarly, the time spent at sea (MeanTTrip) increased with mean distance travelled (from 85.7 ± 0.6 h to 150.7 ± 1.3 h). However, the NbrTrip was reduced when Dist increased (Fig 3B). The NbrFishing also varied with Dist, decreasing to about 300 km and then increasing again.

In Fig 3C, we fixed other parameters (Aggreg = 3, Abund = intermediate level, female body length = 115 cm and type of memorization = Mem1) and considered only females that successfully breed their pup. The E_{fish} by trip increased with the distance to the resource. However, the sum over the breeding period of the weight gain by the pups decreased with Dist (ranging from 31.2 ± 7.2 kg to 19.1 ± 2.3 kg).

Memorization

The ability to memorize significantly affected the mortality rates of both females and pups. When retaining parameters according to the literature (body length of 115 cm; Dist = 150 km), and under quite favorable conditions (Aggreg = 3 and Abund = intermediate level), the memorization ability had no appreciable effect on the mortality of females or pups (Fig 4). Conversely, in unfavorable conditions (female body length of 115 cm; Dist = 300 km; Aggreg = 1; Abund = intermediate level) both females and pups took advantage from the memory ability (Fig 4). Finally, for a given value of Dist, among the richest zones, the most frequently fished are the ones closer to the island (Fig 5).

Female body length

Body length had a positive, although weak, effect on female mortality and a stronger negative effect on that of pups (Fig 6A). We calculated the success of female-pup pairs using Aggreg = 3 and Dist = 150 km, in two conditions of abundance (intermediate and high). In such conditions, females with a body length of 115 cm or more were the most successful ($SP > 0.8$; Fig 6B). On average, the longest females (≥ 115 cm) performed the longest trips (Fig 6C and 6D). Conversely, NbrFishing and the NbrTrip both decreased with increasing

female body length. Thus, longer females exploited distant resources more efficiently than shorter ones.

Identifying optimal body length

Calculation of the (energetic cost) / (success of female-pup pairs) ratio (E/SP) revealed that, for each distance, there exist a minimal value corresponding to an optimal female body length. These optimal body lengths increased with the distance to the resource (Fig 7A). The E/SP ratio looks like a quadratic relationship with the distance the females have to cover (Fig 7B). When considering the optimal female body length as a function of the distance to be covered we find a positive linear relationship (Fig 7C). Outcomes showed that the success of the female-pup pairs (SP) should decrease in a quadratic relation with the female body length and consequently with the average distance that must be covered per trip (Fig 7D).

Discussion

MarCPFS has several limitations since it considers variations in the horizontal plane only, whereas real females forage in a three-dimensional space. Resources considered in the model

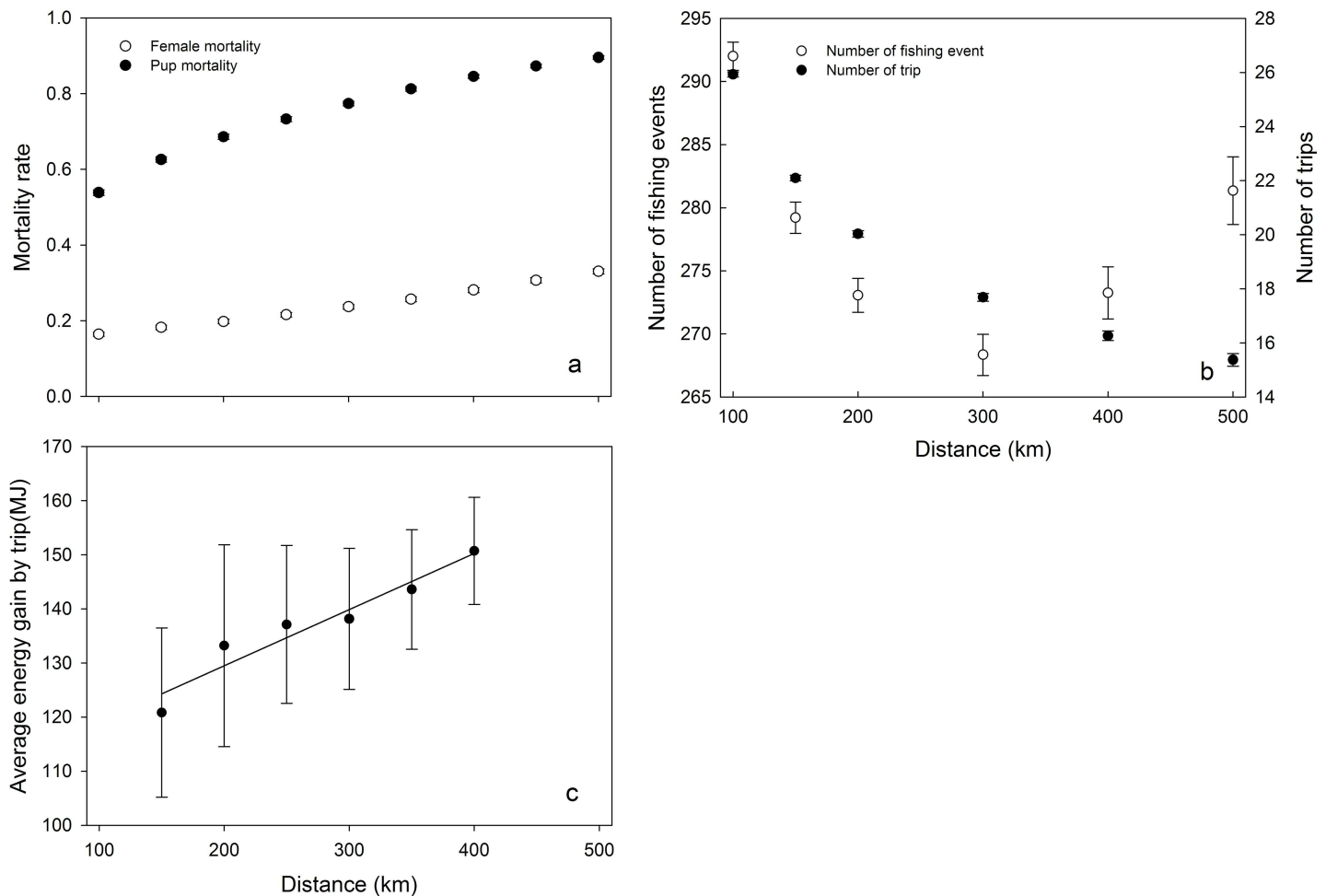


Fig 3. Effects of distance to the resource (Dist) on foraging behavior parameters. Effects (mean \pm SD) of distance to the resource on (a) the probability of pups death (filled circles) and females death (open circles) ($n = 4800$ in each case), (b) the fishing events number (NbrFishing, open circles) and the trips number (NbrTrip, filled circles) ($n = 4800$) and (c) the average energy gained by females by trip ($n = 1598$). Parameters used: Aggreg = 3, Abund = intermediate level, female body length = 115 cm and type of memorization = Mem1. The black line represents the linear regression with $R^2 = 0.93$. For both (b) and (c) only females that successfully breed their pup were considered.

<https://doi.org/10.1371/journal.pone.0173797.g003>

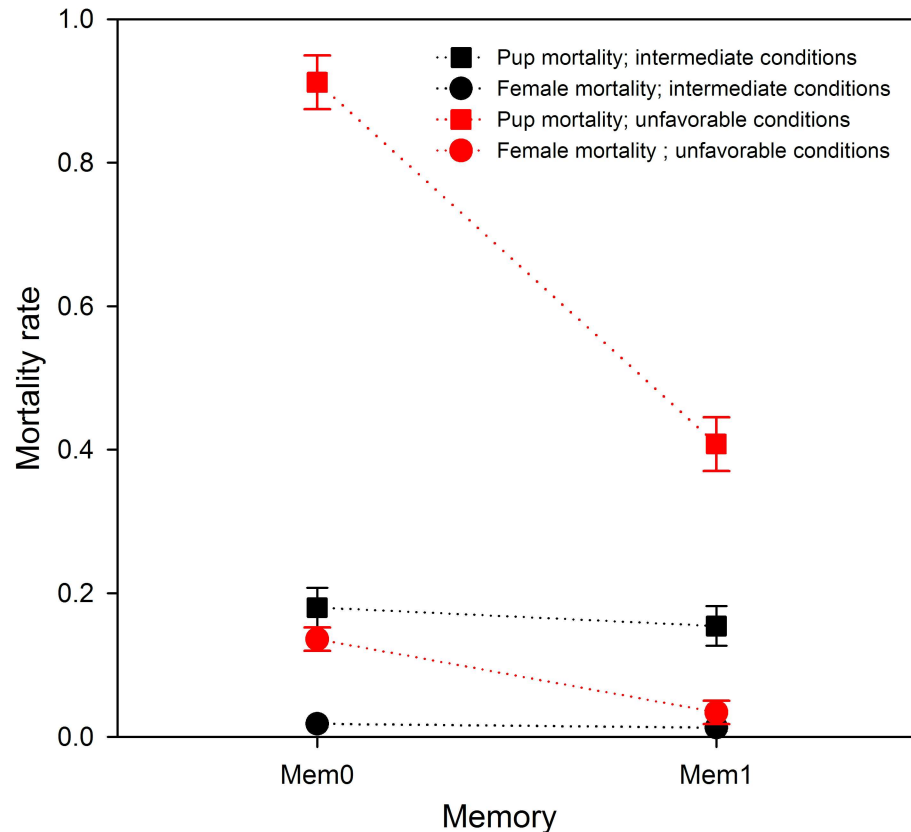


Fig 4. Effect of the memorization on mortality rates. Effect (mean \pm SD) of memorization on the probability of pup death (square symbols) and on the probability of female death (circle symbols). Simulations involved females of 115 cm body length only. Intermediate conditions (black color): prey aggregation level 3, distance to the resource = 150 km, intermediate prey abundance. Unfavorable conditions (red color): prey aggregation level 1, distance to the resource = 300 km, intermediate prey abundance. Simulation performed using Mem0 (no memory) and Mem1 (memorization of location of the best patches).

<https://doi.org/10.1371/journal.pone.0173797.g004>

are static over time and not distributed in accordance with oceanographic features. The over-estimation of final weights can be explained by the uncertainties about real prey abundance and aggregation levels, or the unknown effect of competition. Furthermore, diseases and predation are certainly factors of great importance in the real system. However, the consistency between the emerging results of our model and available observations, and the absence of neither abrupt nor abnormal bifurcation or excessive sensitivity to parameters, suggests that this simulator behaves in a satisfactory manner (Table 3).

Model validation

To validate MarCPFS outputs, we compared model outputs to the real pup's survival rate from Reid and Forcada [53] and the data on final mass of female and pup from Lea *et al.* [14]. When using parameters reported by field measurements (Dist = 150 km, female body length = 115 cm [17]), moderate aggregation (level 3) and intermediate abundance (180 g h^{-1}), we found final weights corresponding to the actual final weights of females and pups ($32.7 \pm 0.9 \text{ kg}$, $11.0 \pm 3.4 \text{ kg}$ for the simulated animals, versus $30.4 \pm 0.7 \text{ kg}$, $10.5 \pm 0.5 \text{ kg}$ for females and pups, respectively ([14]; see Table 3). Under such conditions, simulations yielded a survival rate for pups of $86.2 \pm 2.2\%$, which is comparable with field observations: $77.6 \pm 20.1\%$ ([53];

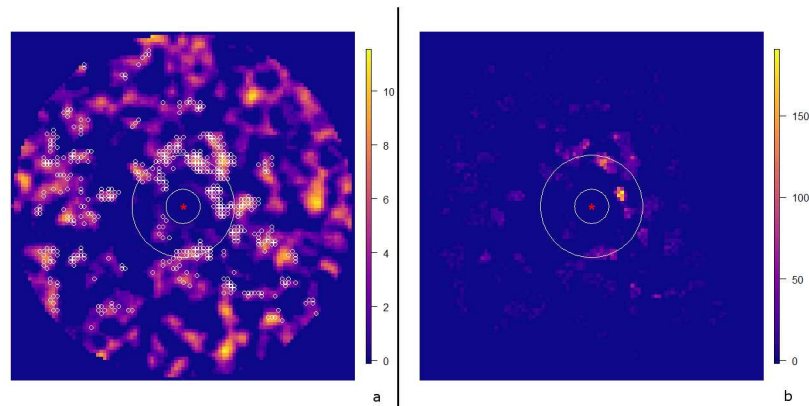


Fig 5. Distribution and frequency of fishing events. Simulation results for 115 cm female body length in an environment roughly corresponding to that of the Kerguelen archipelago (intermediate abundance = 180 g of catchable prey per hour, $Aggreg = 3$ and $Dist = 150$ km). The red star identifies the location of the islands; the two white circles define the limits of the island plateau and the distance ($Dist$) to the resource, respectively. (a) Localization of the fishing events of 10 females over the rearing period (small white circles) on the map of resource density. (b) Location and frequency of the fishing events of 50 females over the rearing period in the same environment. One can see that the most frequently fished cells (b) mainly correspond to the richest ones (a). Conversely, a lot of poor cells have been visited in which animals have been fishing. However, these cells show low fishing frequencies indicating that animals are likely to spend less time in poor-quality zones.

<https://doi.org/10.1371/journal.pone.0173797.g005>

Table 3). Among all the possible combinations of initial parameters, only this particular combination provided results that replicate field values. We thus hypothesize that these conditions constitute an appropriate approximation of the real spatial distribution of prey. We also used some validation elements of foraging behavior of the female described by Boyd [38] (Table 3). The comparison of our results with those of Langton *et al.* [54] about the guillemot showed the convergence of the two systems with a special emphasis on the effects of distance and abundance of the resource on the foraging strategies. This constitutes a partial cross validation of the models in the context of marine central place foraging.

Environmental parameters

All environmental variables ($Dist$, $Abund$ and $Aggreg$) had direct effects on the foraging behavior of females, their mortality rate and final weight. In particular, the response of breeding success to prey spatial distribution parameters was not monotonous, exhibiting a maximum at the intermediate level of aggregation of prey (minimum of pup mortality). The effect of prey aggregation on the reproductive success can be partly explained by female behavioral changes when searching for food (see below). Several environmental conditions (extreme dispersal ($Aggreg$ levels 0 and 1) and/or extreme aggregation of resources ($Aggreg$ levels 8 and 10) and/or low abundance (90 g h^{-1})) are clearly unusual or exceptional, as they do not seem to be able to sustain sufficient successful breeding levels (Fig 2A and 2B). The strong negative effect of the distance to the resource on survival rate (Fig 3A) was expected and can be explained by the overall energy expenditure increasing with the distance, as already reported by Staniland *et al.* [55].

At sea: The foraging behavior

This study highlights the importance of a sufficient level of resource aggregation to sustain populations, as already suggested by field studies (*e.g.*, [15]). $Aggreg$ and $Abund$ strongly affected the number of fishing events per trip (Fig 2D and 2E). In particular, an increase in the

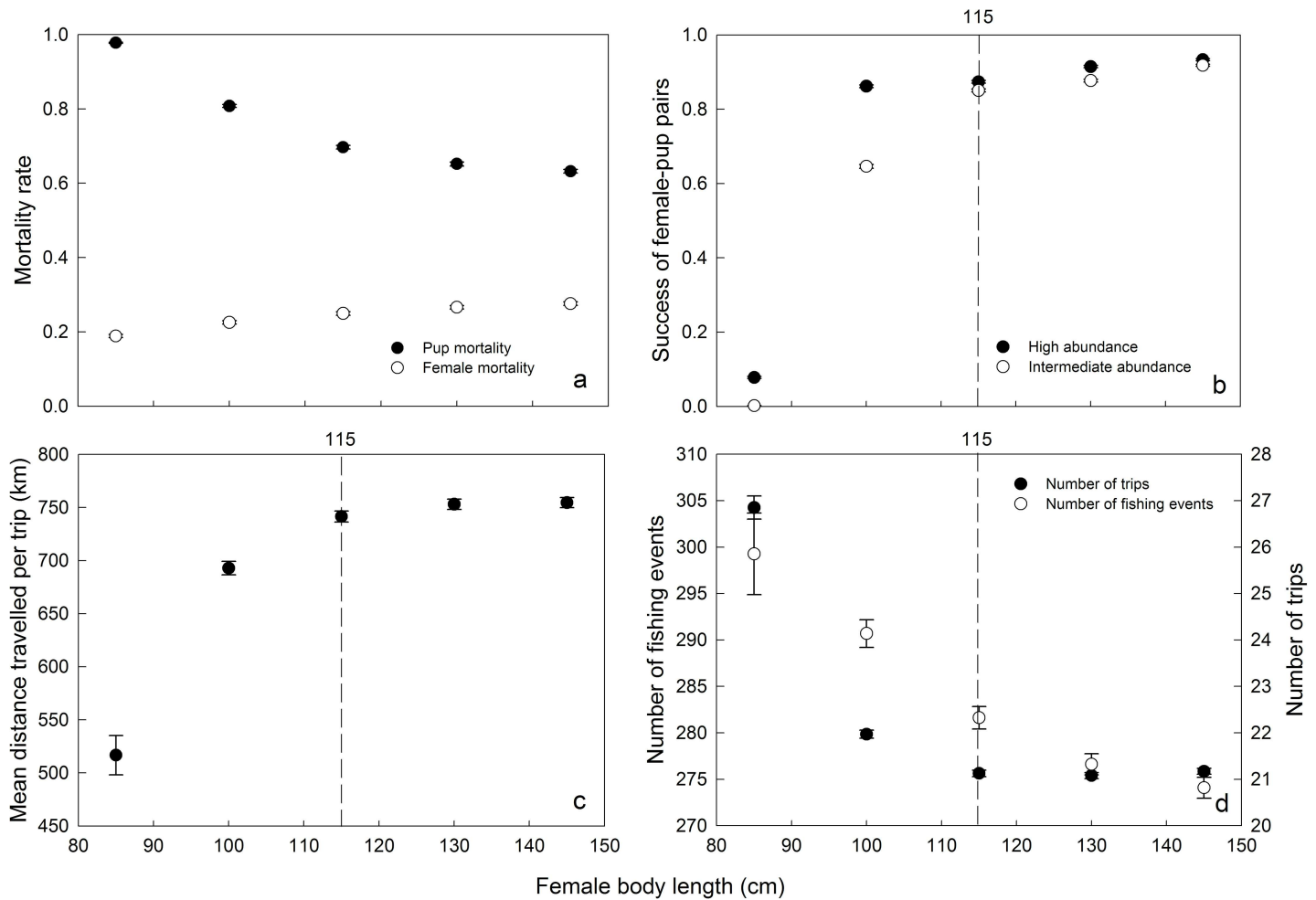


Fig 6. Effects of female body length on survival and foraging behavior. Effect (mean \pm SD) of female body length on (a) the mortality rates of pups (filled circles) and females (open circles) ($n = 8640$ in each case), (b) the success of the pair mother/pup (SP) (intermediate conditions: $\text{Aggreg} = 3$, $\text{Dist} = 150$ km, high prey abundance (filled circles) and intermediate prey abundance (open circles)) ($n = 8640$ in each case), (c) the distance travelled per trip (MeanDTrip), and (d) the fishing events number (NbrFishing, open circles) and the trips number (NbrTrip, filled circles).

<https://doi.org/10.1371/journal.pone.0173797.g006>

aggregation level led to changes in the time spent searching for resource patches of sufficient quality and the mean distance travelled per trip. The curve for the number of fishing events per trip was convex in shape, with a minimum value of 19.4 ± 4.7 fishing events per trip ($\text{Aggreg} = 3$; Fig 2D and 2E). Indeed, for moderately aggregated resources, each fishing event provided a larger amount of energy compared to conditions of dispersed resources. Beyond this threshold value, the aggregation of prey requires animals to spend an even longer time looking for resources patches of sufficiently high quality.

The minimum number of fishing events over the rearing period was obtained for a distance of 300 km (Fig 3B). Beyond this distance, females must increase their fishing efforts to counter-balance the cost of covering such distances. As a consequence, females in poor body condition and unable to quickly recover a sufficient corporal energy are less likely to return to suckle their pup and more likely to abandon them to insure their own survival.

Memorizing location of the richest patches provided an advantage under harsh conditions (Fig 4). This suggests that memorization might be a trait of great importance in most populations of marine predators repeatedly facing such conditions. Indeed, Nable-Nielsen *et al.* [46]

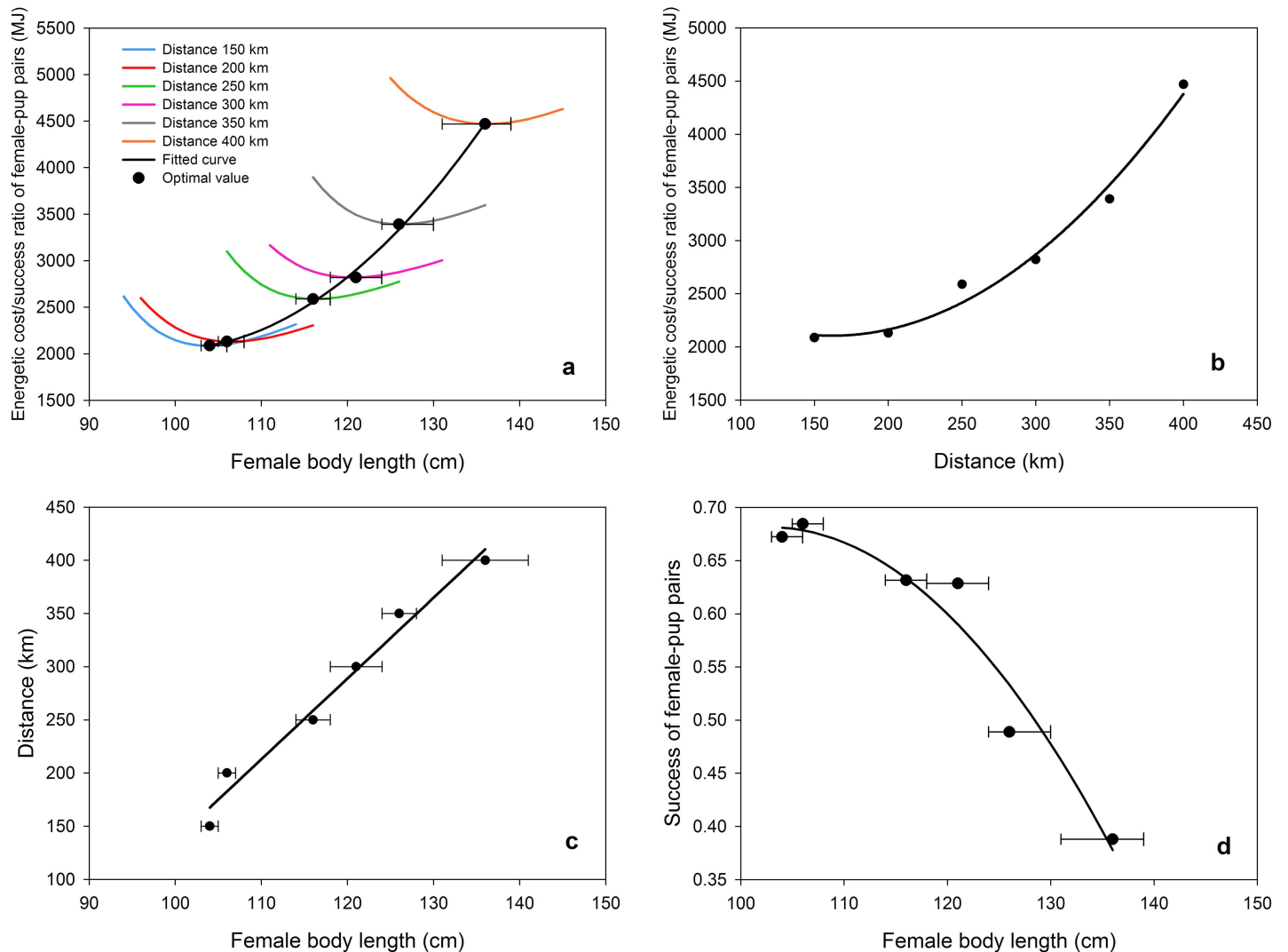


Fig 7. Identifying optimal body length. (a) (Energetic cost) / (success of female-pup pairs) ratio ($R = E/SP$) as a function of female body length, for increasing distances from colony to the resource areas. Each color represents the distance to the resource (Dist) (blue: 150 km, red: 200 km, green: 250 km, pink: 300 km, grey: 350 km, orange: 400 km). Horizontal line indicates the 95% confidence intervals obtained by the bootstrap method (1000 samples with replacements). The regression curve $R = 1.792Length^2 - 355.4Length + 19670$ ($R^2 = 0.99$) is only indicative. To clarify the graph, the representation of each relation was limited to values close to the optimum. (b) Optimal E/SP ratios (MJ) as a function of Dist. (c) Distance–optimal female body length relationship. (d) SP–Optimal female body length relationship. Parameters used: Aggreg = 3, Abund = intermediate level and type of memorization = Mem1.

<https://doi.org/10.1371/journal.pone.0173797.g007>

showed that simulations integrating animals’ ability to remember the profitability and location of previously visited areas were “able to reproduce the movement patterns that resembled those of real porpoises [...] and to maximize their food intake.” For terrestrial mammals, Merkle *et al.* [56] experiments produced similar outcomes and conclusions.

Finally, an ability to memorize the location of the best patches of resources enabled adults to decrease both the mean distance and duration of each trip and the number of fishing events (Fig 5).

Qualitatively, our results are consistent with the optimal foraging theory. According to this theory, animals are likely to spend less time in poor-quality patches and more time in high-quality patches of resources [17, 57]. Our results suggest that females finding cells, or patches of cells, with a low energy content tend to move away rapidly and search for better foraging

Table 3. Elements for model validation.

| | Sources | | Results (simulations) |
|---------------------------------|---------------------------------|--------------|---|
| Pup's survival rate (%) | 77.6 ± 20.1 | [53] | 86.2 ± 2.21 |
| Female final weights (kg) | 30.4 ± 0.7 | [14] | 32.67 ± 0.92 |
| Pup final weights (kg) | 10.5 ± 0.5 | [14] | 11.04 ± 3.42 |
| Female length (cm) | 114.8 ± 0.7 | [14] | Optimal body length ≈ 115 cm |
| | No effect in favorable years | [14, 26, 55] | No effect if ≥ 115cm in intermediate to highly favorable conditions (Fig 5B) |
| Increasing distance of resource | Pup's rate mass gain decreases. | [26] | Pup's rate mass gain decreases. |
| | Time spent diving decrease. | [38] | Time spent diving decreases to a certain distance (depending on the female body length) |

Simulation parameters: Dist = 150 km; female body length = 115 cm; Aggreg = 3; Abund = intermediate level; type of memory = Mem1.

<https://doi.org/10.1371/journal.pone.0173797.t003>

locations (Fig 5). However, it could be argued that this finding reflects the presence, in the design of the simulator, of components of such behavior (e.g., correlated random walk movement). We also parameterized the decision making process for diving with the body condition of the animal, because animals lacking energy have to eat, even when confronted with poor patches of resources (see the Fishing or moving section above). These last two features of the model may, at least partly, cancel each other out, and we consider the observed consistency with the optimal foraging theory to be rather an emergent property of the model than a built-in mechanism (Fig 5).

As for central place foragers, the optimal foraging theory predicts that the load size should increase with the distance travelled from the colony to reach the feeding area [21]. Additionally, regular food provisioning of pup was found to be a critical factor underlying pup growth performance in Subantarctic areas [44] and constitutes a strong constraint over this type of population. Indeed, our results show that the average energy gained by trip increases with Dist (Fig 3C). On the other hand, the female energy expenditure also increases with Dist. As a consequence, longer distance greatly decreased the growth performances of the pups, which have to fast for prolonged periods of time. These results are consistent with previous findings for fur seals from the Kerguelen Islands showing that the rate of pup mass gain decreases with foraging-trip duration [26]. Lastly, carrying heavy loads affects the energy budget of central place foragers, increases travel costs and predation risks [58] and may harden the task of breeding pups.

Optimal phenotype

Female body length was found to have an effect on the probability of successfully rearing a pup (Fig 6A). The shortest females were the least successful mothers, in accordance with Beauplet *et al.* [59]. Globally, when considering all conditions simulated, small females (≤110 cm long) making large numbers of short trips displayed the lowest levels of breeding success (89% pup mortality), whereas larger females (≥ 130 cm) making a lower number of trips were widely more successful (63% pup mortality) (Fig 6C and 6D). Bigger females can store larger amounts of body reserves [60] and are able to exploit efficiently distant food resources [61]. As already shown, they must increase the number of fishing events to compensate for energy loss resulting from both the distance covered and the drag force they undergo (Figs 3B, 6C and 6D). However, their mortality rates were higher than for small females mainly due to their larger metabolic requirements and higher displacement costs. On the contrary, when considering intermediate/favorable conditions only, there was no appreciable difference in the breeding success (SP) when females were ≥ 115 cm in length (Fig 6B).

The positive relationship between the optimal E/SP ratio and female body length (Fig 7A) can be interpreted as a positive correlation between the amount of lipids animals can store and their body length, an allometric scaling relating body length to mass. As already shown by Beuplet and Guinet [60], the longest females are more efficient at exploiting distant food resources. On Amsterdam island (1,500 km north of the Kerguelen islands), where female Subantarctic fur seals (*A. tropicalis*) have to perform long foraging trips, body length has been shown to be a critical factor for foraging performance [44] and survival [60, 62]. Furthermore, a population from South Georgia of *A. gazella* has also been shown to display a similar tendency, associated with decreased availability of Antarctic krill, due to the positive values of the Southern Annular Mode over the last three decades [63]. At Kerguelen Island depending on the foraging conditions female size were found to have a significant effect on pup growth under poor conditions, while no effect of female size on pup growth could be detected under favorable conditions [14, 26, 64]. However, our results are consistent with these observations and show that, under intermediate conditions (particularly Dist = 150 km), the success of female-pup pairs was roughly similar for females' length ranging between 115 and 145 cm (Fig 6B) and it follows that "larger is not always better" [60].

The relationship between the E/SP ratio and the average distance to fishing areas is a positive quadratic one (Fig 7B). This is not very surprising since the drag force females undergo when they move, and the energy needed for it to be counter-balanced, is a function of the cross-sectional area (m^2) of the animal. On the other hand, even if the animals can dynamically adopt optimal body lengths, SP evolves in a negative quadratic way (Fig 7D), which means that females have more and more difficulties to raise their pup with increasing distances. When looking at the optimal body length in function of Dist, we found a linear relationship (Fig 7C). L being the average length of the animals, we obtain:

$$L = \frac{k_2}{k_1} (Dist - D_0) + L_0$$

where D_0 is the initial value of distance, L_0 the initial value of female body length, k_1 and k_2 the speeds at which the fishing areas and the female body length can change respectively (S2 Text). Simulations gave similar outcomes (Fig 7C), with a slope of 0.128 corresponding to k_2/k_1 . For instance, using a constant speed (3 km year^{-1}) for the shift of the polar front, female body length should increase on average by $0.38 \text{ cm year}^{-1}$ for maintaining the best E/SP ratio. Under a pessimistic scenario in which females fail to modify quickly enough their phenotype (*i.e.* $k_1 < 0.38 \text{ cm year}^{-1}$), while the population has to go farther and farther at sea, the pups will have to fast for longer periods and will be less and less well-fed. In the end, even if the females could adjust their body length from generation to generation, their individual fitness should not evolve in a similar way. To that regards, Beuplet *et al.* [65] found that both survival of Subantarctic fur seal pups and post-weaning pup survival were strongly correlated with growth rate during the lactation period. In addition, we could fear that difficulties undergone within the lactation period should hinder pup's growth resulting into smaller animals, since such a malnourishment leads to a growth delay that cannot be later fully compensated for in mammals [66, 67]. Lastly, in most dramatic cases, food distress could possibly lead to the population extinction.

Conclusion

Our model shows the importance of the distance covered to feed and prey aggregation which are key factors to which animals are highly sensitive. Indeed, a simultaneous increase in distance and aggregation would be of dramatic consequences on the survival of central place forager populations. Such results should be considered within the framework of the environmental

modifications likely to be triggered by climate change, as predicted by climatologists (*i.e.* a southward shift of the highly productive Polar Front). Several studies have already revealed relationships between oceanographic conditions and the foraging success of marine predators [12–15, 18, 19, 68, 69]. Environmental features and oceanographic cues including temperature, temperature gradients and water turbidity, may be indicative of phytoplankton concentration [70]. These cues may provide marine predators with elements allowing them to identify the most favorable locations. Thus, in view of the predicted climate change that could lead to critical conditions, the adaptive capacities of central place foragers is of major importance regarding their survival and conservation. Modelling outcomes suggested that only the largest females would be able to rear their newborns successfully if the distance to the resource increases. On the contrary, young (short) females which reach their definitive body length at about 7 years old would be disadvantaged in addition to their inexperience in the foraging activity [13, 22, 26, 28, 43]. Consequently, their contribution to successive generations could be increasingly limited in the course of time.

Body length appears to be a good example of an integrative trait [71–73]. It is known to be highly heritable in most animal species [74] and thus most likely under strong natural selection in the wild. Hence, we can hypothesize that analogous changes in the environment would lead to a gradual selection of larger individuals, although female length may not evolve quickly enough to compensate for the rate of change in the distance to resource parameter. This will depend on the adequacy of velocities of the southward shift of the main oceanographic frontal structures and evolution of the populations with regards to global warming.

Future studies should also consider the effect of the vertical accessibility and structuring of the prey on the reproductive success of females, as a function of their length. In this line, the work of Benoit-Bird [75] on several top predators (including the Northern fur seal (*Callorhinus ursinus*)) revealed that the “fine scale distribution of prey is critical to how predators perceive the suitability of their food supply and the mechanisms they use to exploit it”. In particular, the quality of the patches of juvenile Pollock on which Northern fur seals feed, their structuring into clusters and inter-patch distance, were found to play major roles. In order to obtain more detailed and accurate results, we have already engaged in coupling MarCPFS with a physical-biogeochemical model of the ocean dynamics (including the micronekton dynamics: SEAPO-DYM, [76]). This coupling, after modifications and new calibration of our model, should allow us to verify that some of the prominent results we presented can be, to some extent, generalized to other central place foragers such as seabirds.

Simulation code is available on request.

Synthetic simulation results are available on the MarCPFS DataBase: http://www2.sophia.inra.fr/MarCPFS_Database.

Supporting information

S1 Text. Details about submodels.

(PDF)

S2 Text. Details about the linear relationship between distance to the resource and female body length.

(PDF)

S1 Fig. Details about creation of environmental maps.

(PDF)

S2 Fig. Comparison between real tracking and tested movements in the simulator.

(PDF)

S1 Dataset. Data used to calculate the drag force.

(TXT)

S2 Dataset. Probability matrices of returning to the island (S1A Fig).

(TXT)

S3 Dataset. Seal length and mass data.

(TXT)

S4 Dataset. Energy spent used to calculate cost/benefit ratio.

(TXT)

S5 Dataset. Simulation results for distances ranging from 100 to 250 km.

(ZIP)

S6 Dataset. Simulation results for distances ranging from 300 to 500 km.

(ZIP)

S7 Dataset. Energy gained by trip.

(TXT)

S8 Dataset. Weight gained by the pup.

(ZIP)

S9 Dataset. Matrices used to build the Fig 5.

(ZIP)

Acknowledgments

Some of the data used in this study were collected with the support of Institut Paul Emile Victor (IPEV Program 109) and Terres Australes et Antarctiques Françaises. We thank these organizations and all the fieldworkers involved in the collection of data in the Kerguelen archipelago. The MarCPFS DataBase was kindly developed by Roger Boll. We would like to warmly thank Dr Céline Feillet for reviewing the English and anonymous reviewers who provided helpful suggestions and constructive comments. The simulation code was developed in C-ANSI and built thanks to the open sources cross-platform IDE CodeBlocks (13.12) and the Gnu Compiler gcc 4.8.2.

Author Contributions

Conceptualization: LMG JM CG PC.

Data curation: LMG FB CG PC.

Formal analysis: LMG EW PC.

Funding acquisition: EW CG PC.

Investigation: LMG JM EW PC.

Methodology: LMG JM EW PC.

Project administration: PC.

Resources: LMG PC.

Software: LMG JM PC.

Supervision: PC.

Validation: LMG PC.

Visualization: LMG PC.

Writing – original draft: LMG JM CG PC.

Writing – review & editing: LMG JM FB EW CG PC.

References

1. Boyd PW and Doney SC, Modelling regional responses by marine pelagic ecosystems to global climate change. *Geophys Res Lett*. 2002; 29(16): 53–1–53–4.
2. Drinkwater KF, Beaugrand G, Kaeriyama M, Kim S, Ottersen G, Perry RI et al., On the processes linking climate to ecosystem changes. *J Mar Syst*. 2010; 79(3–4): 374–388.
3. Hoegh-Guldberg O and Bruno JF, The impact of climate change on the world's marine ecosystems. *Science*, 2010; 328(5985): 1523–1528. <https://doi.org/10.1126/science.1189930> PMID: 20558709
4. Bopp L, Resplandy L, Orr JD, Doney SC, Dunne JP, Gehlen M et al., Multiple stressors of ocean ecosystems in the 21st century: projections with CMIP5 models. *Biogeosciences*. 2013; 10(10): 6225–6245.
5. Sverdrup HU, On conditions for the vernal blooming of phytoplankton. *ICES J Mar Sci*. 1953; 18(3): 287–295.
6. González-Taboada F and Anadón R, Patterns of change in sea surface temperature in the North Atlantic during the last three decades: beyond mean trends. *Climatic Change*. 2012; 115(2): 419–431.
7. Margalef R, Life-forms of phytoplankton as survival alternatives in an unstable environment. *Oceanol Acta*. 1978; 1(4): 493–509.
8. Bost CA, Cotté C, Terray P, Barbaud C, Bon C, Delord K et al., Large-scale climatic anomalies affect marine predator foraging behavior and demography. *Nat Commun Py*. 2015; 6, 8220.
9. Trujillo, Allan P; Thurman, Harnold V, *Essentials of oceanography* (9th ed). 2008. New Jersey: Pearson Education, Inc.
10. Cianelli L, Baily K, Olsen EM, Evolutionary and ecological constraints of fish spawning habitats. *ICES J. Mar. Sci*. 2015; 72(2): 285–296.
11. Cairns DK, Gaston AJ and Huettmann F, Endothermy, ectothermy and the global structure of marine vertebrate communities. *Mar Ecol Prog Ser*. 2008; 356: 239–250.
12. Costa DP, Croxall JP and Duck CD, Foraging energetics of Antarctic fur seals in relation to changes in prey availability. *Ecology*. 1989; 70(3): 596–606.
13. McCaiferty DJ, Boyd IL, Walker TR, Taylor RI, Foraging responses of Antarctic fur seals to changes in the marine environment. *Mar Ecol-Prog Ser*. 1998; 166: 285–299.
14. Lea M-A, Guinet C, Cherel Y, Duhamel G, Dubroca L, Pruvost P et al., Impacts of climatic anomalies on provisioning strategies of a Southern Ocean predator. *Mar Ecol Prog Ser*. 2006; 310: 77–94.
15. Guinet C, Dubroca L, Lea M-A, Goldworthy S, Cherel Y, Duhamel G et al., Spatial distribution of foraging in female Antarctic fur seals (*Arctocephalus gazella*) in relation to oceanographic variables: a scale-dependent approach using geographic information systems. *Mar Ecol Prog Ser*. 2001; 219: 251–264.
16. Guinet C, Jouventin P, Georges JY, Long term population changes of fur seals *Arctocephalus gazella* and *A. tropicalis* on subantarctic (Crozet) and subtropical (St Paul and Amsterdam) islands and their possible relationship to el niño Southern Oscillation. *Antarct Sci*. 1994; 6: 473–478.
17. Turner J, Barrand NE, Bracegirdle TJ, Convey P, Hodgson DA, Jarvis M et al., Antarctic climate change and the environment: an update. *Polar Rec*. 2014; 1–23.
18. Biuw M, Boehme L, Guinet C, Hindell M, Costa D, Charrassin JB et al., Variations in behaviour and condition of a Southern Ocean top predator in relation to in-situ oceanographic conditions. *P Natl Acad Sci USA*. 2007; 104: 13705–13710.
19. Bost CA, Cotté C, Bailleul F, Cherel Y, Charrassin JB, Guinet C et al., The importance of oceanographic fronts to marine birds and mammals of the southern oceans. *J Mar Syst*. 2009; 783: 63–376.
20. Krebs JR, Erichsen JT, Webber MI, Carnov EL, Optimal prey selection in the great tit (*Parus major*). *Anim Behav*. 1977; 25: 30–38.
21. Orians GH and Pearson NE, On the theory of central place forager, in *Analysis Systems* (Ed. By Horn D J, Stairs G R and Mitchell RD). Columbus: Ohio State University Press. 1977; 153–177.

22. Boyd IL and McCann TS, Pre-natal investment in reproduction by female Antarctic fur seals. *Behav Ecol Sociobiol.* 1989; 6: 377–385.
23. Lea M-A, Cherel Y, Guinet C, Nichols P-D, Antarctic fur seals foraging in the Polar Frontal Zone: inter-annual shifts in diet as shown from faecal and fatty acid analyses. *Mar Ecol Prog Ser.* 2002; 245: 281–297.
24. Lea M-A and Dubroca L, Fine-scale linkages between the diving behavior of Antarctic fur seals and oceanographic features in the southern Indian Ocean. *J Mar Sci.* 2003; 60: 990–1002.
25. Lea M-A, Hindell M, Guinet C, Goldsworthy S, Variability in the diving activity of Antarctic fur seals, *Arctocephalus gazella*, at Iles Kerguelen. *Polar Biol.* 2002; 25: 269–279.
26. Guinet C, Lea M-A, Goldsworthy S, Mass change in Antarctic fur seal (*Arctocephalus gazella*) pups in relation to maternal characteristics at Kerguelen Islands. *Can J Zool.* 2000; 78: 476–483.
27. Arnould JPY, Boyd IL, Speakman JR, The relationship between foraging behaviour and energy expenditure in Antarctic fur seals. *J Zool.* 1996; 239: 769–782.
28. Cherel Y, Guinet C, Tremblay Y, Fish prey of antarctic fur seals *Arctocephalus gazella* at Ile de Croy, Kerguelen. *Polar Biol.* 1997; 17: 87–90.
29. Bonadonna F, Lea M-A, Dehorter O, Guinet C, Foraging ground fidelity and route-choice tactics of a marine predator, the Antarctic fur seal *Arctocephalus gazella*. *Mar Ecol Prog Ser.* 2001; 223: 287–297.
30. Coquillard P and Hill DRC, Modélisation et Simulation d'Ecosystèmes: des modèles déterministes aux simulations à événements discrets. Masson, Paris, France. 1997; p. 273.
31. Grünbaum D, Using spatially explicit models to characterize foraging performance in heterogeneous landscapes. *Am Nat.* 1998; 151: 97–115. <https://doi.org/10.1086/286105> PMID: 18811411
32. Grimm V, Ten years of individual-based modelling in ecology: what have we learned and what could we learn in the future? *Ecol Model.* 1999; 115(2–3): 129–148.
33. Belkin IM, Gordon AL, Southern Ocean fronts from the Greenwich meridian to Tasmania. *J Geophys Res.* 1996; 101: 3675–3696.
34. Abbott MR, Richman JG, Letelier RM, Barrett JS, The spring bloom in the Antarctic Polar Frontal Zone as observed from a mesoscale array of bio-optical sensors. *Deep-Sea Res PT II.* 2000; 47: 3285–3314.
35. Gentry RL, and Kooyman GL, Fur seals: maternal strategies on land and at sea, Princeton University Press, Princeton, New Jersey, USA, 1986; pp. 291.
36. Arnould JPY, Boyd IL, Speakman JR, Measuring the body composition of Antarctic fur seals (*Arctocephalus gazella*), validation of hydrogen isotope dilution. *Physiol Zool.* 1996; 69: 93–116.
37. Bonner WN, Lactation strategies in pinnipeds, problems for a marine mammal group. *Symp Zool Soc Lond.* 1984; 51: 253–272.
38. Boyd IL, Foraging and provisioning in Antarctic fur seals: interannual variability in time-energy budgets. *Behav Ecol.* 1999; 10: 198–208.
39. Luque SP, Miller E, Arnould J, Chambellant M, Guinet C, Ontogeny of body size and shape of Antarctic and Subantarctic fur seals. *Can J Zool.* 2007; 85: 1275–1285.
40. Bonadonna F, Lea M-A, Guinet C, Foraging routes of Antarctic fur seals (*Arctocephalus gazella*) investigated by the concurrent use of satellite tracking and time-depth recorders. *Polar Biol.* 2000; 23: 149–159.
41. R Development Core Team (2008). R: A language and environment for statistical computing. R Foundation for Statistical Computing, Vienna, Austria. ISBN 3-900051-07-0, URL <http://www.R-project.org>.
42. Schlather M, Malinowski A, Oesting M, Boecker D, Storkorb K, Engelke S, Pfaff B and R Core Team (2016). RandomFields: Simulation and Analysis of Random Fields. R package version 3.1.8, <http://CRAN.R-project.org/package=RandomFields>.
43. Winship AJ, Hunter AMJ, Rosen DAS, Trites AW, Food consumption by seal lions: existing data and techniques. Alaska Sea Grant, University of Alaska Fairbanks. 2006; p 177–191.
44. Georges JY and Guinet C, Maternal care in the Subantarctic fur seals on Amsterdam Island. *Ecology.* 2000; 81: 295–308.
45. Goldsworthy SD, Lea MA, Guinet C, Comparison of mass-transfer and isotopic dilution methods for estimating milk intake in Antarctic fur seal pups. *Polar Biol.* 2004; 27: 801–809.
46. Nabe-Nielsen J, Tougaard J, Teilmann J, Lucke K & Forchhammer MC, How a simple adaptive foraging strategy can lead to emergent home ranges and increased food intake. *Oikos.* 2013; 122: 1307–1316.
47. Austin D, Bowen WD, McMillan JI, Intraspecific variation in movement patterns, modeling individual behaviour in a large marine predator. *Oikos.* 2004; 105: 15–30.

48. Sibly RM, Grimm V, Martin BT, Johnston ASA, Kulakowska K, Topping CJ et al., Representing the acquisition and use of energy by individuals in agent-based models of animal populations. *Methods in Ecol. Evol.* 2013; 4: 151–161.
49. Cherel Y, Groscolas R, Relationships between nutrient storage and nutrient utilization in long-term fasting birds and mammals. In: Adams, N.J., Slotow, R.H. (Eds.), *Proc. 22nd Int. Ornithol. Congr. Birdlife*, South Africa, Johannesburg, 1999; pp. 17–34
50. Benhamou S, Spatial memory and searching efficiency. *Anim. Behav.* 1994; 17: 1423–1433.
51. Dumont B and Hill DRC, Multi-agent simulation of group foraging in sheep: effects of spatial memory, conspecific attraction and plot size. *Ecol. Model.* 2001; 141 (1–3): 201–215.
52. Coquillard P, Muzy A, Diener F, Optimal phenotypic plasticity in a stochastic environment minimizes the cost/benefit ratio. *Ecol. Model.* 2012; 242: 28–36.
53. Reid K and Forcada J, Causes of offspring mortality in the Antarctic fur seal, *Arctocephalus gazella*: the interaction of density dependence and ecosystem variability. *Can J Zool.* 2005; 83(4): 604–609.
54. Langton R, Davies I M, Scott B E, A simulation model coupling the behaviour and energetics of a breeding central place forager to assess the impact of environmental changes. 2014; 273: 31–43.
55. Staniland I, Boyd I, Reid K, An energy–distance trade-off in a central-place forager, the Antarctic fur seal (*Arctocephalus gazella*). *Mar Biol.* 2007; 152: 233–241.
56. Merkle JA, Fortin D, Morales JM, A memory-based foraging tactic reveals an adaptive mechanism for restricted space use. *Ecology letters.* 2014; 17: 924–931. <https://doi.org/10.1111/ele.12294> PMID: 24811575
57. Davies NB, Krebs JR, West SA, *An Introduction to Behavioural Ecology*, 4th edition, Wiley-Blackwell, 2012;p. 506.
58. Nonacs P, State dependent behavior and the Marginal Value Theorem. *Behav Ecol.* 2001. 12:71–83.
59. Beauplet G, Barbraud C, Dabin W, Kussener C, Guinet C, Age-specific survival and reproductive performances in fur seals: evidence of senescence and individual quality. *Oikos.* 2006; 112: 430–441.
60. Beauplet G and Guinet C, Phenotypic determinants of individual fitness in female fur seals: larger is better. *Proc R Soc B.* 2007; 274: 1877–1883. <https://doi.org/10.1098/rspb.2007.0454> PMID: 17519194
61. Beauplet G, Dubroca L, Guinet C, Cherel Y, Dabin W, Gagne C, Hindell M, Foraging ecology of subantarctic fur seals *Arctocephalus tropicalis* breeding on amsterdam Island: seasonal changes in relation to maternal characteristics and pup growth. *Mar Ecol Prog Ser.* 2004; 273: 211–225.
62. Authier M, Cam E, Guinet C, Selection for increased body length in Subantarctic fur seals on Amsterdam Island. *J Evolution Biol.* 2010; 24: 607–616.
63. Forcada J and Hoffman JI, Climate change selects for heterozygosity in a declining fur seal population. *Nature.* 2014; 511: 462–13542. <https://doi.org/10.1038/nature13542> PMID: 25056064
64. Bailleul F, Luque SP, Dubroca L, Arnould JPY, Guinet C, Differences in foraging strategy and maternal behaviour between two sympatric fur seal species at the Crozet Islands. *Mar Ecol-Progress Ser.* 2005; 293: 273–282.
65. Beauplet G, Barbraud C, Chambellant M, Guinet C, Interannual variation in the post-weaning and juvenile survival of subantarctic fur seals: influence of pup sex, growth rate and oceanographic conditions. *J Anim Ecol.* 2005; 74: 1160–1172.
66. Wilson PN, Osbourne DF, Compensatory growth after undernutrition in mammals and birds. *Biological reviews.* 1960
67. Brzek P and Konarzewski M, Effect of refeeding on growth, development and behavior of undernourished bank swallow (*Riparia riparia*) nestlings. *Auk.* 2004; 121: 1187–1198.
68. Bailleul F, Authier M, Ducatez S, Roquet F, Charrassin J-B, Cherel Y et al., Looking at the unseen: combining animal bio-logging and stable isotopes to reveal a shift in the ecological niche of a deep diving predator. *Ecography.* 2010; 33(4): 709–719.
69. Guinet C, Vacqu e-Garcia J, Picard B, Bessigneul G, Lebras Y, Dragon AC et al., Southern elephant seal foraging success in relation to temperature and light conditions: insight into prey distribution. *Mar Ecol Prog Ser.* 2014; 499: 285–301.
70. Jaud T, Dragon A-C, Vacqu e-Garcia J, Guinet C, Relationship between chlorophyll a concentration, light attenuation and diving depth of the southern elephant seal (*Mirounga leonina*). *PLoS ONE.* 2012; 7 (10): e47444. <https://doi.org/10.1371/journal.pone.0047444> PMID: 23082166
71. Schmidt-Nielsen K, *Scaling: why is animal body size so important?* Cambridge University Press, Cambridge, 1984; pp.256.
72. McKinney ML, Trends in body size evolution. In *Evolutionary Trends* (McNamara KJ ed.) University of Arizona Press, Tucson, Arizona, USA, 1990; pp.75–78.

73. Perrin N. On body size, energy and fitness. *Funct Ecol.* 1998; 12: 500–502.
74. Peters RH, *The Ecological Implications of Body Size.* Cambridge University Press, Cambridge. 1983.
75. Benoit-Bird KJ, Battaile BC, Nordstrom CA, Trites AW, Foraging behavior of northern fur seals closely matches the hierarchical patch scales of prey. *Mar Ecol Prog Ser.* 2013; 479: 283–302.
76. Lehodey P, Murtugudde R, Senina I, Bridging the gap from ocean models to population dynamics of large marine predators: A model of mid-trophic functional groups. *Prog Oceanogr.* 2010; 84: 69–84.