



HAL
open science

The rheology and modeling of chemically treated carbon nanotubes suspensions

Ason Ma, Francisco Chinesta, Malcolm Mackley

► **To cite this version:**

Ason Ma, Francisco Chinesta, Malcolm Mackley. The rheology and modeling of chemically treated carbon nanotubes suspensions. *Journal of Rheology*, 2009, 53, pp.547-573. 10.1122/1.3093105 . hal-01500183

HAL Id: hal-01500183

<https://hal.science/hal-01500183v1>

Submitted on 2 Apr 2017

HAL is a multi-disciplinary open access archive for the deposit and dissemination of scientific research documents, whether they are published or not. The documents may come from teaching and research institutions in France or abroad, or from public or private research centers.

L'archive ouverte pluridisciplinaire **HAL**, est destinée au dépôt et à la diffusion de documents scientifiques de niveau recherche, publiés ou non, émanant des établissements d'enseignement et de recherche français ou étrangers, des laboratoires publics ou privés.



Distributed under a Creative Commons Attribution 4.0 International License

The rheology and modeling of chemically treated carbon nanotubes suspensions

A. W. K. Ma

*Department of Chemical Engineering, University of Cambridge,
Pembroke Street, CB2 3RA, United Kingdom*

F. Chinesta

*Laboratoire de Mécanique des Systèmes et des Procédés,
151 Boulevard de l'Hôpital, 75013, Paris, France*

M. R. Mackley

*Department of Chemical Engineering, University of Cambridge,
Pembroke Street, CB2 3RA, United Kingdom*

This paper reports recent experimental findings and rheological modeling on chemically treated single-walled carbon nanotubes (CNTs) suspended within an epoxy resin. When a CNT suspension was subject to a steady shear flow, it exhibited a shear-thinning characteristic, which was subsequently modeled by a Fokker–Planck (FP) based orientation model. The model assumes that the shear flow aligns CNT in the flow direction, but there are events such as Brownian motion and tube–tube interaction trying to randomize the orientation. In the FP orientation model, randomizing events were modeled with an appropriate rotary diffusion coefficient (D_r) and the shear-thinning behavior was explained in terms of progressive alignment of CNTs toward the shear direction. In terms of linear viscoelasticity (LVE), small-amplitude oscillatory measurements revealed mild elasticity for semidilute treated CNT suspensions. The exact origin for this elasticity is not clear and both tube–tube interaction and bending/stretching of CNTs have been proposed by other authors as possible origins. It is, however, clear from the current modeling that the experimental evolution of storage modulus (G') cannot be described using a single-mode Maxwell model or simple Brownian rod modeling. In this paper, experimental LVE data of the treated CNT suspensions were fitted using the FP orientation model with an “effective diffusion coefficient” term and an empirical relation was subsequently identified for the effective diffusion term. Intuitively, chemical treatment has created a weakly interconnected network of CNT and it is believed that the mild elasticity originated from this weak network as well as other randomizing events (Brownian motion and tube–tube hydrodynamic interaction). Finally, step strain experiments confirmed the presence of a weak network at small strains, which at large strains was found to be destroyed. Incorporation of a strain softening factor allowed for the formulation of a

self-consistent FP based orientation model describing both the steady shear and LVE responses of treated CNT suspensions.

I. INTRODUCTION

Carbon nanotubes (CNTs) are cylinders of rolled graphite sheets possessing high mechanical strength, low density, and special electronic properties [Iijima (1991); Dresselhaus and Dai (2004)]. They belong to a relatively new class of fibrous material that can potentially be used for high-performance nanocomposites and nanodevices [Ajayan *et al.* (1994); Calvert (1999); de Heer *et al.* (1995); Rinzler *et al.* (1995); Saito (1997); Collins *et al.* (2000); Kong *et al.* (2000); Tans *et al.* (1998)]. Most of these applications involve suspending the CNTs in a matrix and thereby allows for further processing such as fiber spinning, film casting, extrusion, and inkjet printing [Vigolo *et al.* (2000); Safadi *et al.* (2002); Ericson *et al.* (2004); Kozlov *et al.* (2005); Kordás *et al.* (2006)]. Both in terms of processing and product, a uniformly dispersed suspension of CNT is generally desirable [Shaffer *et al.* (1998); Sandler *et al.* (1999)]; however, CNTs have low solubility in most common solvents and therefore obtaining a homogenous dispersion of CNT can be laborious and difficult [Calvert (1999); Dresselhaus and Dai (2004)]. For instance, Huang *et al.* (2006) reported that a mixing time of several hours was required to establish a stable rheology for CNT suspensions and even then uniformity at nanoscale is not guaranteed. In this regard, introducing functional groups onto the wall/cap of CNTs also known as functionalization has proven to be one of the most effective ways to enhance dispersion of CNT in a processing matrix [Kinloch *et al.* (2002); Banerjee *et al.* (2003); Dyke and Tour (2003); Dyke and Tour (2004)]. Despite the potential of functionalization, a limited amount of work has been carried out on the rheological modeling of chemically treated CNT suspensions. This paper presents experimental results and modeling of chemically treated CNTs suspended in an epoxy resin, considering both steady shear and linear viscoelastic (LVE) responses for this type of suspension.

II. EXPERIMENTAL DETAILS

CNTs used were single-walled CNTs produced by high pressure carbon monoxide disproportionation (HiPco) method and they were supplied by Nanocomposites Inc., USA. The exact length and diameter distribution for the treated CNTs have not been fully characterized; however, according to the supplier, each individual CNT was 0.5–1 μm long and with a typical diameter of 1.2 nm. In the case of treated CNTs, effective π - π stacking between CNTs and subsequent aggregation was prevented by covalently attaching arene diazonium salts onto the sidewall of CNTs [Dyke and Tour (2003); Dyke and Tour (2004)]. For comparison, some examples of basic rheology and microstructure of untreated CNTs are also considered in this paper.

0.6 g of CNTs was dispersed in 60 g of epoxy resin (Araldite LY556, Huntsman Inc.) to give a 1% masterbatch suspension. Suspensions with lower CNT concentrations were obtained by a dilution of the masterbatch. Mixing was carried out for 5 h using a Silverson-L4R homogenizer and the microstructure of resulting mixtures was optically characterized using the Cambridge shear system (Linkam Scientific Instruments Ltd.) [Bower *et al.* (1998); Mackley *et al.* (1999)]. Figure 1 compares the typical optical texture of a suspension with chemically treated CNTs and that with untreated CNTs. Some impurities of amorphous carbon and metal catalyst residue were present in the chemically treated CNT suspension [Fig. 1(a)]; however it was clear from the micrograph that the suspension showed no optically resolvable aggregates of CNTs, and the mixture

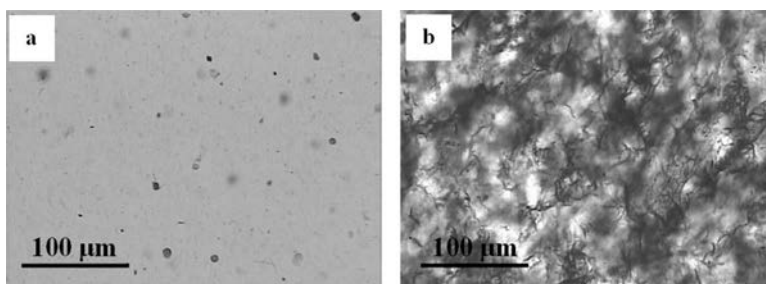


FIG. 1. Optical micrograph of (a) 0.33% chemically treated and (b) 0.33% untreated CNTs suspended in epoxy resin (optical depth=130 μm).

was well dispersed at the micronlevel. In addition, no formation of optically resolvable aggregates was observed in the presence of shear flow, as shown in Fig. 2. By contrast, the untreated CNT suspension consisted of optically resolvable CNT aggregates [Fig. 1(b)] as discussed by Rahatekar *et al.* (2006) and Ma *et al.* (2008a).

The extensional rheology of the same treated CNT sample was characterized and reported by Ma *et al.* (2008c). By fitting the experimental extensional viscosity data to the models of Batchelor (1971) and Shaqfeh and Fredricksen (1990), the average aspect ratio was estimated to be 180, which is in reasonable agreement with the atomic force microscopy (AFM) results where small bundles with a typical diameter of 5 nm were observed after high shear mixing. It should, however, be noted that the CNTs were not “monodispersed” and there was a certain length (and diameter) distribution associated with the CNTs used in the actual experiments—originated from the synthesis, mixing, and subsequent chemical treatment processes [Ma *et al.* (2008b)]. In this study, the aspect ratio distribution of CNT has not been studied in detail. In terms of modeling, given an average aspect ratio in the order of 180, the shape factor k in the Jeffery equation [Eq. (4)] was assumed to be 1. The aspect ratio distribution could have an influence on the overall rheological behavior of the system (as discussed, for example, in the paper of

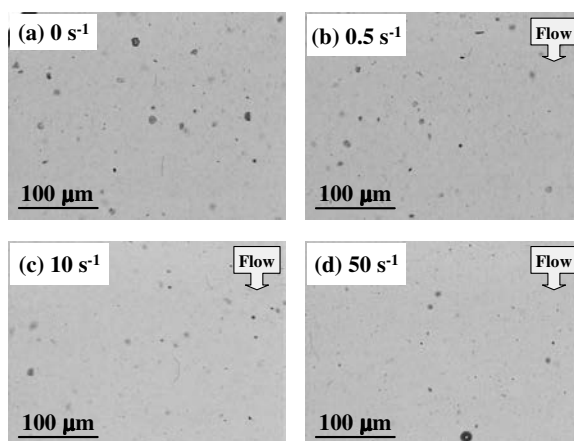


FIG. 2. Optical micrographs of a 0.3% treated SWNT-epoxy suspension (a) after dispersion and sheared at different rates as indicated in the figures. No buildup of aggregate structures was observed even in the presence of shear. Optical depth=130 μm . Shear time=300 s. Temperature=25 $^{\circ}\text{C}$. The images were captured immediately after the cessation of flow to maximize clarity.

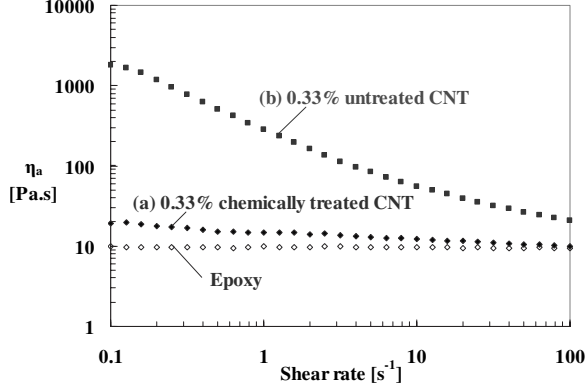


FIG. 3. Apparent viscosity (η_a) as a function of shear rate ($\dot{\gamma}$) for (a) 0.33% chemically treated and (b) 0.33% untreated CNT suspensions.

Pittman and Bayram (1990)], but the effect of length distribution has not been considered explicitly in the current modeling. If there is any effect due to the “polydispersity” of the CNTs, this would have been accounted for in the subsequent model fitting, as represented by the parameter N_p in Eq. (12), which combines the effect of concentration and aspect ratio.

Rheological measurements were made using an Advanced Rheometric Expansion System (ARES) strain-controlled rheometer with 50 mm parallel plates and a gap size of 0.3 mm. The temperature was maintained at 25 °C by an air oven. In steady shear experiments, the apparent viscosity of the sample was measured after a particular shear rate was applied for 100 s. In the small-amplitude oscillatory shear experiment, a strain amplitude of 1% was used. In order to minimize possible complication from sample loading, samples were squeezed between the parallel plates slowly and were rested for at least 2 h before any measurements were carried out. Step strain experiments were carried out in order to explore the transition from small to large strain deformations.

III. STEADY SHEAR FLOW

A. Experimental results

Steady shear experimental plots of the apparent viscosity (η_a) as a function of shear rate ($\dot{\gamma}$) for chemically treated and untreated CNT suspensions are shown in Fig. 3. Both suspensions were shear thinned asymptotically to the matrix viscosity (also shown), but given the same weight concentration of 0.33%, the suspension with untreated CNTs showed a significantly larger viscosity enhancement effect than the suspension with chemically treated CNTs. Previous work [Rahatekar *et al.* (2006)] identified the viscosity enhancement for untreated CNT suspensions with the optically observed aggregate microstructure and similar observations were also reported in a comparative study of chemically treated and untreated carbon nanofiber (CNF) suspensions [Xu *et al.* (2005)]. The data obtained in Fig. 3 were found to be consistent irrespective of whether a particular shear rate was approached from either a higher or lower shear rate provided an adequate equilibration time was allowed at each respective shear rate.

B. Fokker–Planck based simple-orientation model

In order to model the steady shear-thinning response of treated CNTs, an orientation model was developed. In this model, the CNTs were assumed to be an assembly of high aspect ratio rigid fibers subjected to shear and rotary diffusion. Similar models have been used to model short fiber suspensions; however, the numerical values of key parameters in the current modeling were identified by fitting to experimental data and no theoretical relations as described, for example, in Petrie (1999), were used. The model proposed is consistent with the shear-induced alignment of CNTs as observed using optical microscopy [Rahatekar *et al.* 2006] and transmission electron microscopy [Fan and Advani (2005, 2007)]. In terms of the mathematical treatment of CNT orientation distribution, a Fokker–Planck (FP) description, instead of the readily available closure approximations for the orientation tensors, was used in the steady shear modeling. Nonlocal effects such as tube–tube interaction and CNT-polymer interaction can be introduced as proposed in the work of Forest and Wang (2005), where they considered blends of rodlike liquid crystal polymer and flexible polymers. The latter approach, however, requires some additional information that is not readily available. This includes detailed descriptions for (i) tube–tube interaction, (ii) CNT conformation, and (iii) CNT-polymer interaction. Besides that, taking into consideration nonlocal interactions would lead to extraelastic body forces that cannot be written as the divergence of a second order tensor and therefore cannot be directly introduced in the general expression for the stress tensor. As pointed out by Forest and Wang (2005), it is necessary to introduce the extraelastic body forces in the momentum balance equation, making this type of analysis more complicated to perform. This study aims to derive a simple constitutive model for chemically treated CNT suspensions and for this reason, tube–tube interaction is represented using an effective diffusion coefficient and CNT-polymer interaction is neglected in our current system where the suspending matrix is made up of small prepolymer molecules. Experimentally, similar steady shear and LVE rheological responses were obtained when the epoxy matrix was replaced by an acrylic resin and this further confirms the belief that CNT-polymer interaction plays a relatively weak role in terms of the overall rheology of the chemically treated CNT suspensions.

1. Model formulation

The momentum balance equation neglecting the mass and inertia terms reads as

$$\text{div}(\underline{\underline{\sigma}}) = 0, \quad (1)$$

where $\underline{\underline{\sigma}}$ is the total stress tensor.

The mass balance equation for an incompressible fluid gives

$$\text{div}(\underline{\underline{v}}(\underline{\underline{x}})) = 0, \quad (2)$$

where $\underline{\underline{v}}(\underline{\underline{x}})$ is the velocity field.

The constitutive equation for a dilute suspension with high aspect ratio rigid fibers can be written as [Batchelor (1970); Hinch and Leal (1975, 1976); Petrie (1999)]

$$\underline{\underline{\sigma}} = -P\underline{\underline{I}} + 2\eta\underline{\underline{D}} + \underline{\underline{\tau}}^f = -P\underline{\underline{I}} + \underline{\underline{\tau}}, \quad (3)$$

where P denotes the pressure, $\underline{\underline{I}}$ is the unit tensor, η is the suspending medium viscosity, $\underline{\underline{D}}$ is the strain rate tensor (symmetric component of the velocity gradient tensor), and $\underline{\underline{\tau}}^f$ is the stress contribution due to the presence of fibers.

The suspension microstructure can be defined using the fiber orientation. It was assumed that the fibers are ellipsoidal and rigid and that they are immersed in a Newtonian

matrix whose kinematics are defined by $\text{grad}(\underline{v}(\underline{x}))$. If \underline{p} denotes the unit vector aligned in the fiber axis direction, then, its evolution will be given by the Jeffery equation [Jeffery (1922)],

$$\frac{d\underline{p}}{dt} = \underline{\underline{\Omega}} \cdot \underline{p} + k\underline{\underline{D}} : \underline{p} - k(\underline{\underline{D}} : (\underline{p} \otimes \underline{p}))\underline{p}, \quad (4)$$

where $k=(\lambda^2-1)/(\lambda^2+1)$, λ is the (effective) fiber aspect ratio, and $\underline{\underline{\Omega}}$ denotes the vorticity tensor. The tensor product \otimes of vectors \underline{a} and \underline{b} is defined as $(\underline{a} \otimes \underline{b})_{ij} = a_i b_j$, and “:” denotes the tensor product contracted twice [i.e., $(\underline{a} : \underline{b}) = \sum a_{ij} b_{ji}$].

Although the Jeffery equation was first proposed for an isolated fiber immersed in a Newtonian fluid, it can also be applied to a population of fibers if the suspension is dilute and the interaction between the fibers is negligible. However, defining the fluid microstructure using the orientation of each fiber in the suspension is not helpful for the formulation of a mesoscale model. Instead, a more useful way of describing the microstructure is to use a kinetic theory approach which introduces an orientation distribution function $\psi(\underline{x}, \underline{p}, t)$ such that $\psi(\underline{x}, \underline{p}, t)d\underline{p}$ represents the probability of finding at point \underline{x} and time t : a fiber whose orientation is within the interval defined by \underline{p} and $\underline{p} + d\underline{p}$. In this expression, the physical coordinates (\underline{x}, t) (space and time) can be distinguished from the conformation coordinate \underline{p} , which describes the orientation defined on the surface of the unit sphere $S(0, 1)$. This distribution function satisfies the normality condition,

$$\oint_{S(0,1)} \psi(\underline{x}, \underline{p}, t) d\underline{p} = 1, \quad \forall \underline{x}, \forall t. \quad (5)$$

The consideration of an orientation distribution function allows certain moments to be defined: namely, the second order moment, also known as the second order orientation tensor,

$$\underline{\underline{a}}(\underline{x}, t) = \oint_{S(0,1)} \underline{p} \otimes \underline{p} \psi(\underline{x}, \underline{p}, t) d\underline{p} \quad (6)$$

and the fourth order moment also known as the fourth order orientation tensor,

$$\underline{\underline{\underline{a}}}(\underline{x}, t) = \oint_{S(0,1)} \underline{p} \otimes \underline{p} \otimes \underline{p} \otimes \underline{p} \psi(\underline{x}, \underline{p}, t) d\underline{p}. \quad (7)$$

The evolution of the orientation distribution function is governed by the FP equation [see, for example, Hinch and Leal (1972)],

$$\frac{d\psi}{dt} + \frac{\partial}{\partial \underline{p}} \cdot \left(\frac{d\underline{p}}{dt} \psi \right) = \frac{\partial}{\partial \underline{p}} \cdot \left(D_r \frac{\partial \psi}{\partial \underline{p}} \right), \quad (8)$$

where the advection field $d\underline{p}/dt$ is given by the Jeffery’s equation [Eq. (4)], and $d\psi/dt$ is the material derivative, i.e.,

$$\frac{d\psi}{dt} = \frac{\partial \psi}{\partial t} + \underline{v} \cdot \text{grad}(\psi), \quad (9)$$

where

$$\text{grad}(\psi) = \frac{\partial \psi}{\partial \underline{x}}. \quad (10)$$

D_r , given in Eq. (8) is the rotary diffusion coefficient of the fibers and is a key adjustable parameter within the model to describe both orientation and randomizing events in semidilute suspensions. Folgar and Tucker (1984) proposed the use of an empirical effective rotary diffusion (\hat{D}_r) and in their treatment, \hat{D}_r is proportional to the shear rate.

As the flow kinematics induce a homogeneous distribution state, the material derivative reduces to the partial derivative, which vanishes when looking for the steady solution. In the present work, it is assumed that the orientation does not depend on the physical coordinates, and therefore $\psi = \psi(\underline{p}, t)$. By integrating Eq. (8) in the conformation space [the unit sphere surface $S(0, 1)$], it is easy to verify that

$$\frac{\partial}{\partial t} \left(\oint_{S(0,1)} \psi(\underline{p}, t) d\underline{p} \right) = 0, \quad \forall t, \quad (11)$$

which implies that if Eq. (8) is solved using an initial distribution that satisfies the normality condition, its time evolution will also verify the normality condition. On the other hand, if one is looking directly for the steady orientation distribution, the normality condition related to the searched distribution should be imposed using an appropriate technique (e.g., Lagrange multipliers).

An appropriate way to derive a constitutive equation for the suspension involves the use of spatial homogenization and statistical averaging. Together with other simplifying hypotheses for high aspect ratio fibers, the stress tensor $\underline{\underline{\tau}}^f$ due to the presence of fibers can be defined [Batchelor (1971); Hinch and Leal (1975); Hinch and Leal (1976)],

$$\underline{\underline{\tau}}^f = 2\eta N_p(\underline{\underline{a}}; \underline{\underline{D}}) + \beta D_r \left(\underline{\underline{a}} - \frac{\underline{\underline{I}}}{3} \right), \quad (12)$$

where N_p is a scalar parameter that depends on the fiber concentration as well as the aspect ratio of fibers in dilute suspensions whereas for dilute suspensions $\beta = 6\nu\zeta_{\text{str}}$ (ν is the number concentration and ζ_{str} is the viscous drag coefficient) [Larson (1999)]. The second term on the right-hand side of Eq. (12) essentially accounts for the effect of Brownian motion; but in general, other randomizing events, such as fiber-fiber hydrodynamic interaction, can be accounted for by replacing D_r with an “effective diffusion term.” In terms of steady shear or large strain deformations, the second term becomes negligible compared with the first term involving the fourth order orientation tensor. The second term in Eq. (12) was, however, found to be important in explaining the mild elasticity observed in small-strain LVE measurements. The second term is included in the LVE modeling, but it can be neglected in steady shear data fitting. It should be noted that although the expression proposed by Hinch and Leal (1975, 1976) is used in the current study, there exist alternative formulae as reported by Chan and Terentjev (2007) and Grmela (2008).

Instead of using a kinetic theory model [Eqs. (3), (7), (8), and (12)], some authors prefer to use purely macroscopic models because of lower computation requirements. The simplest macroscopic model can be derived by taking the time derivative of Eq. (6) and then introducing both the Jeffery equation [Eq. (4)] and the FP equation [Eq. (8)]. Prager (1957) showed that

$$\frac{d\underline{\underline{a}}}{dt} = \underline{\underline{\Omega}} \cdot \underline{\underline{a}} - \underline{\underline{a}} \cdot \underline{\underline{\Omega}} + k(\underline{\underline{D}} \cdot \underline{\underline{a}} + \underline{\underline{a}} \cdot \underline{\underline{D}} - 2(\underline{\underline{a}}; \underline{\underline{D}})) - 6D_r \left(\underline{\underline{a}} - \frac{\underline{\underline{I}}}{3} \right). \quad (13)$$

As shown in the equation above, the evolution of the second order orientation tensor ($\underline{\underline{a}}$) depends on the fourth order orientation tensor ($\underline{\underline{a}}$) and closure relations that express the

fourth order orientation tensor as a function of the lower order orientation tensors is commonly used to solve the mathematical problem in a closed form. Different forms of closure relationship, including quadratic, linear, hybrid and natural relations, can be found in the literature [Advani and Tucker (1990); Dupret and Verleye (1999)]. However, it is worth noting that these closure relations have their own constraints and the use of these relations could sometimes adversely influence the computed numerical solutions. For instance, the quadratic closure relation becomes exact only for perfectly aligned fibers whereas the linear closure relation becomes exact only for randomly orientated fibers [Petrie (1999)]. In steady shear modeling, the orientation distribution of CNT was expected to be neither completely isotropic nor randomly orientated (for most shear conditions); closure approximations were therefore avoided and the FP equation was solved directly instead [Öttinger and Laso (1992); Chaubal *et al.* (1997); Chinesta *et al.* (2003); Lozinski and Chauviere (2003); Chauviere and Lozinski (2004); Keunings (2004); Ammar and Chinesta (2005); Ammar *et al.* (2006a, 2006b)]. In the subsequent LVE modeling, given that the orientation distribution of CNT during small-amplitude oscillations was expected to remain close to an initial isotropic distribution, a linear closure relation was used.

Once the distribution function is known, the fourth order orientation tensor and the stress tensor can then be computed. For simple shear flow and with an assumption that the flow is not perturbed by the presence and orientation of fibers,

$$\underline{v} = \begin{pmatrix} u \\ v \\ w \end{pmatrix} = \begin{pmatrix} \dot{\gamma}y \\ 0 \\ 0 \end{pmatrix}. \quad (14)$$

In the case of steady shear or large strain deformation, the stress contribution from Brownian motion and other randomizing effects is negligible compared with the anisotropic viscous term involving the fourth order orientation tensor; the shear stress according to Eq. (12) is therefore given by

$$\tau_{12} = \eta\dot{\gamma} + 2\eta N_p a_{1212} \dot{\gamma} \quad (15)$$

and the apparent viscosity is therefore

$$\eta_a = \frac{\tau_{12}}{\dot{\gamma}} = \eta(1 + 2N_p a_{1212}). \quad (16)$$

The described model was originally developed for dilute suspensions, it has however been used in several commercial simulation codes and has been successfully applied to model semi-dilute and concentrated suspensions generally encountered in industrial applications [Advani (1994)]. In such cases, the model previously described could still be used to compute the flow kinematics and the microstructure evolution, but rheological parameters in the model, such as N_p and D_r , should be determined from experimental data. As an alternative, there also exists models that allows for the estimation of D_r and N_p [see, for example, Larson (1999)], but the hypothesis of which they are based on is only valid under certain circumstances.

C. Model fitting

The FP based simple-orientation model has been applied to the treated CNT suspensions and Fig. 4(a) shows the model fitting of chemically treated CNT suspensions with four different weight concentrations (0.05%, 0.2%, 0.33%, and 0.5%). Taking the 0.33% CNT suspension as an example, the evolution of η_a in the orientation model is controlled

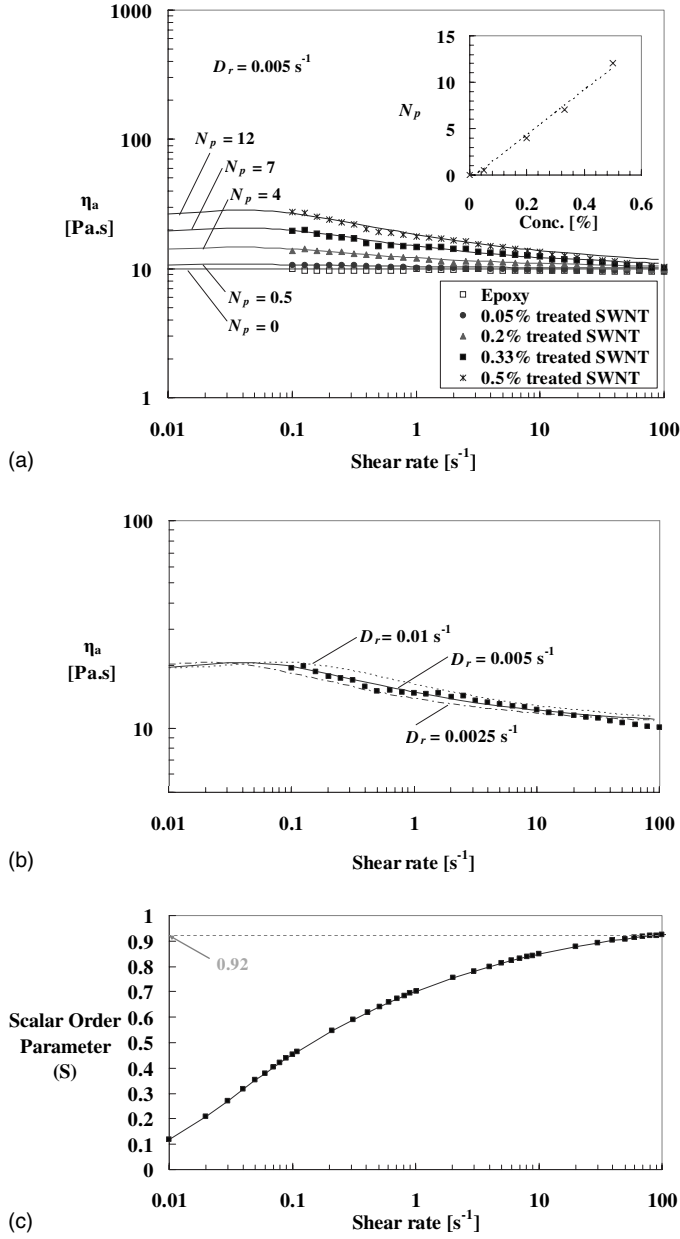


FIG. 4. (a) Orientation model fitting for epoxy, 0.05%, 0.2%, 0.33% and 0.5% chemically treated CNTs suspended in epoxy where N_p and D_r are model fitting parameters. (b) Sensitivity of the orientation model to the fitting parameter D_r for the 0.33% treated CNT suspension and $N_p=7$. (c) The scalar order parameter (S) calculated by fitting apparent shear viscosity data to the orientation model for a rotary diffusion coefficient of 0.005 s⁻¹. [Note: by setting $N_p=0$, the fiber contribution term in Eq. (16) becomes zero and therefore, $\eta_a=\eta$ where η is the suspending medium viscosity.]

by the values of D_r and N_p and the best constant- D_r fit was obtained for $D_r=0.005$ s⁻¹ and $N_p=7$. In Fig. 4(b), different values of D_r were used to illustrate the sensitivity of the model on the fitting parameter D_r . In general, there is a good agreement between η_a predicted by the model and the experimental data; but for high shear rates ($\dot{\gamma}$), the

predicted η_a is slightly higher than the experimental value. For instance, at $\dot{\gamma}=60 \text{ s}^{-1}$, η_a of the 0.33% suspension was found experimentally to be 10.5 Pa s, but the orientation model predicted a viscosity of 11.3 Pa s (with a constant $D_r=0.005 \text{ s}^{-1}$) and this gives an error of about 8%. Although there is an error of a few percents in predicting high shear-rate data, the use of a constant D_r should be sufficient to provide a reasonably good estimation of η_a for general engineering problems, and this also saves the effort in determining the exact relationship between D_r and $\dot{\gamma}$. However, in cases where a more accurate description of high shear viscosity is needed, the dependence of D_r on $\dot{\gamma}$ should be carefully evaluated [see, for example, Folgar and Tucker (1984) and Larson (1999)]. In terms of low shear-rate data, although the torque generated by $\dot{\gamma}<0.1 \text{ s}^{-1}$ was too small to be measured accurately and corresponding η_a data was not available experimentally, the model predicted a low shear-rate Newtonian plateau and the level of the plateau depends on the parameter N_p [Fig. 4(a)]. As shown in the inset figure, N_p scaled linearly with the CNT concentration.

Given the best-fit value for D_r to be 0.005 s^{-1} , one can compare this value to the theoretical prediction by Doi and Edwards (1986) for dilute suspensions where interparticle interactions are absent and rotary diffusion is due to Brownian motion only,

$$D_{r0} = \frac{3k_B T (\ln(L/d) - 0.8)}{\pi \eta_s L^3}, \quad (17)$$

where k_B is the Boltzmann constant ($1.38 \times 10^{-23} \text{ J/K}$), T is the temperature (in Kelvin), L is the CNT length, d is the CNT diameter, and η is the viscosity of the suspending medium.

For the treated CNTs having an aspect ratio (L/d) of about 180 and epoxy resin with a base viscosity of 10 Pa s, Eq. (17) predicted a Brownian rotary diffusion (D_{r0}) of 0.002 s^{-1} , which is in the same order of magnitude as the D_r determined from the experimental data fitting. The higher value of D_r could probably be explained by extraintersurface interactions in the case of semidilute suspensions.

To quantify the degree of CNT alignment, a scalar order parameter (S) can be used [see, for example, Fry *et al.* (2005)] and the definition can be found in many liquid crystalline polymer textbooks such as Donald *et al.* (2006) and Laso *et al.* (2006),

$$S = \sqrt{\frac{3}{2}(\underline{\underline{Q}}:\underline{\underline{Q}})}, \quad (18)$$

where $\underline{\underline{Q}}=(\underline{\underline{a}}-\underline{\underline{I}}/3)$, $\underline{\underline{a}}$ is the second order orientation tensor as defined in Eq. (6), and $\underline{\underline{I}}$ is the identity matrix. S is a scalar parameter varies between 0 and 1 and the larger the magnitude of S , the higher the degree of alignment. Figure 4(c) presents the scalar order parameter (S) as a function of shear rate as predicted by the orientation modeling. At a shear rate of 100 s^{-1} , the model predicted an order parameter of 0.92.

The orientation model, in principle, could be used to model CNT suspensions where the CNTs do not aggregate in the presence of shear flow. However, recent modeling work carried out by us [Ma *et al.* (2008a)] suggests that such a model cannot satisfactorily describe the shear-thinning characteristics for (untreated) CNT suspensions where optically resolvable CNT aggregates are present [see, for example, Rahatekar *et al.* (2006)]. For CNT suspensions where the CNTs aggregated in shear flow, a more advanced model named the ‘‘aggregation/orientation (AO) model’’ has been developed to explain the shear-thinning behavior observed experimentally. The AO model considered a hierarchy

of aggregate structures within the CNT suspensions and the evolution of CNT orientation depended on the flow conditions as well as the entanglement state of CNTs [Ma *et al.* (2008a)].

IV. SMALL-AMPLITUDE LINEAR VISCOELASTIC OSCILLATORY DATA

A. Experimental results

LVE of CNT suspensions was studied using small-amplitude oscillatory measurements. Epoxy resin showed scattered G' data with torque values very close to the detection limit of the transducer, implying that the elasticity of the matrix ($G'_{\text{epoxy}} \sim 0$) is negligible. Epoxy behaved essentially as a Newtonian fluid with viscous dissipation that is consistent with steady shear measurements. Addition of CNTs increased the values of both G' and G'' as shown in Figs. 5(a) and 5(b). Measurements were made at a strain of 1%, which was well within the linear strain response of the suspensions. The enhancement of G' was concentration dependent and was more pronounced at high concentration levels (0.2% and 0.5%). The evolution of G' as a function of frequency is consistent with experimental results reported by others [Song and Youn (2005); Xu *et al.* (2005)] and similar evolution of G' was also observed experimentally when the treated CNTs were suspended in a Newtonian acrylic resin having a different base viscosity [dipropylene glycol diacrylate (DPGDA); Cytec Industries Inc.]. Figure 5(a) clearly illustrates that the addition of CNTs increased the elasticity of the system as a whole. This response is very different from that of a typical short fiber suspension, where in the latter case, the addition of non-Brownian fibers was reported to have no extra contribution to the storage modulus (G') value of the suspending medium [Carter (1967); Ganani and Powell (1986)].

To assess the relative importance of viscous and elastic contributions at a given concentration, full G' , G'' , and η^* data of the 0.5% CNT suspension are presented in Fig. 5(c). The value of G'' was observed to be higher than G' within the full range of frequency studied, which implies that the elasticity associated with the addition of CNTs is relatively mild. Although the elastic response is relatively weak, it is interesting to note that the experimental evolution of G' and G'' does not follow the prediction of a single-mode Maxwell model as predicted for Brownian rod systems [Larson (1999)].

B. Model fitting

In the case of CNFs which are analogous to CNTs, Xu *et al.* (2005) carried out experiments and applied elastic and rigid dumbbell models to describe both shear and viscoelastic behavior for treated and untreated CNF suspensions. For treated CNF suspensions, they claimed that a Hookean elastic dumbbell model can successfully capture the LVE response. For the system studied in this paper, the experimental shear thinning was found and has successfully been modeled using the FP orientation diffusion model using a constant diffusion coefficient. To model the LVE of treated CNT suspensions, Eqs. (12) and (13) are considered in the context of small-amplitude oscillatory measurements. Prior to any oscillatory measurements, CNTs are assumed to be isotropically orientated (given that no preshear is applied to the sample). In the presence of weak small-amplitude oscillatory flows, the orientation of CNTs would remain very close to an isotropic distribution. This allows for the application of a linear closure relation for the fourth order orientation tensor, which takes the following form [see, for example, Advani and Tucker (1990)]:

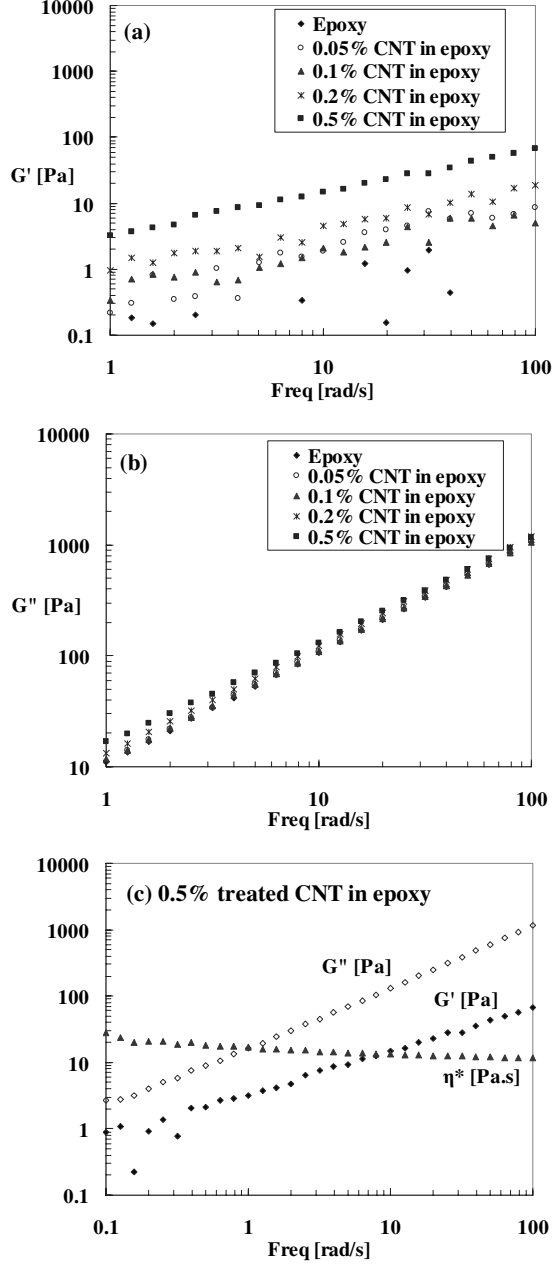


FIG. 5. (a) Loss modulus (G'') and (b) storage modulus (G') as a function of frequency for different concentrations of treated CNT suspensions (with strain=1%). (c) LVE data, which include the storage modulus (G'), the loss modulus (G''), and the complex viscosity (η^*) as a function of frequency, for the 0.5% treated CNT suspension.

$$a_{ijkl}^{\text{lin}} = -\frac{1}{35}(\delta_{ij}\delta_{kl} + \delta_{ik}\delta_{jl} + \delta_{il}\delta_{jk}) + \frac{1}{7}(a_{ij}\delta_{kl} + a_{ik}\delta_{jl} + a_{il}\delta_{jk} + a_{kl}\delta_{ij} + a_{jl}\delta_{ik} + a_{jk}\delta_{il}). \quad (19)$$

Given that the small-amplitude oscillatory flow does not perturb significantly the isotropic orientation distribution state, the following approximation holds:

$$(\underline{\underline{a}}:\underline{\underline{D}})_{12} \approx \frac{\dot{\gamma}}{15}. \quad (20)$$

Combining Eqs. (13) and (20) gives

$$\frac{d\underline{\underline{a}}_{12}}{dt} = \frac{\dot{\gamma}}{5} - 6D_r \underline{\underline{a}}_{12}, \quad (21)$$

which can be rearranged as

$$\hat{\tau} \frac{da}{dt} + a = \hat{\eta} \dot{\gamma}, \quad (22)$$

where $a \equiv \underline{\underline{a}}_{12}$, $\hat{\tau} = 1/6D_r$, and $\hat{\eta} = 1/30D_r \equiv \hat{\tau}/5$.

Equation (22) takes the form of a Maxwell viscoelastic model and for a small-amplitude oscillatory flow where $\dot{\gamma}(t) = i\gamma_0\omega e^{i\omega t}$, the real and imaginary components of a (i.e., $\underline{\underline{a}}_{12}$) are

$$a' = \frac{\hat{\tau}\hat{\eta}\gamma_0\omega^2}{1 + \hat{\tau}^2\omega^2},$$

$$a'' = \frac{\hat{\eta}\gamma_0\omega}{1 + \hat{\tau}^2\omega^2}. \quad (23)$$

The shear stress according to Eq. (12) is

$$\tau' + i\tau'' = \gamma_0\eta\omega i \left(1 + \frac{2N_p}{15} \right) + \beta D_r (a' + ia'') \quad (24)$$

and the storage modulus (G') and the loss modulus (G'') are therefore

$$G' = \beta D_r \frac{\hat{\tau}\hat{\eta}\omega^2}{1 + \hat{\tau}^2\omega^2}, \quad (25)$$

$$G'' = \eta\omega \left(1 + \frac{2N_p}{15} \right) + \beta D_r \frac{\hat{\eta}\omega}{1 + \hat{\tau}^2\omega^2}. \quad (26)$$

This analysis is in perfect agreement with the expressions given in Larson (1999) for high aspect ratio Brownian rods. It is clear from this theoretical analysis that the Brownian motion of particles would result in Maxwell type elasticity, where $G' \propto \omega^2$ at low frequencies and there is a G' plateau at high frequencies. For the treated CNT suspensions studied in this paper, a single-mode Maxwell model, however, could not describe the experimental LVE data which showed G' scaling roughly as $\omega^{0.5}$ over three decades of frequency. To reconcile the difference between prediction by Eq. (25) and experimental LVE data, one might consider the concept of an “effective rotary diffusion coefficient.” Most notably, Folgar and Tucker (1984) proposed the use of an empirical diffusion coefficient where $\hat{D}_r = C_r \dot{\gamma} \propto C\omega$ to account for fiber-fiber interactions in a semidilute short fiber suspension (C is known as the Folgar–Tucker constant and was determined to be about 0.003–0.016) [Larson (1999)]. If it is assumed that $\hat{D}_r = C\omega$, this would give a slope of 1 on a log-log plot of G' versus frequency, inconsistent with the experimental

results obtained for the treated CNT suspensions. It is believed that the physics of chemically treated CNTs is more complex and that the LVE rheology of treated CNT involves hydrodynamic interactions, Brownian motion, fiber-fiber collisions, as well as other possible effects, such as bending and repulsion, not considered by Folgar and Tucker (1984).

In this paper, we assume that the effective diffusion coefficient can be written as

$$\hat{D}_r = D_{r1} + \chi(\gamma)D_{r2}, \quad (27)$$

where

$$\chi(\gamma) = \begin{cases} \frac{\gamma_c - \gamma}{\gamma_c} & \text{if } \gamma \leq \gamma_c \\ 0 & \text{if } \gamma > \gamma_c. \end{cases} \quad (28)$$

D_{r1} is the base diffusion coefficient accounting for randomizing effects, such as Brownian motion and tube-tube interaction, and was determined to be 0.005 s^{-1} in fitting the orientation model to steady shear experimental data; D_{r2} is the diffusion coefficient corresponding to a weak network of CNT that is only present at small strain. $\chi(\gamma)$ is a function which approaches 1 at a very small strain and equals to 0 for an applied strain (γ) larger than a critical strain (γ_c) that destroys the network.

Replacing the diffusion coefficient D_r term in Eq. (12) with the effective diffusion coefficient defined in Eq. (27) gives

$$\underline{\underline{\tau}}^f = 2\eta N_p(\underline{\underline{a}}:D) + \beta(D_{r1} + \chi(\gamma)D_{r2})\left(\underline{\underline{a}} - \frac{\underline{\underline{I}}}{3}\right). \quad (29)$$

Phenomenologically, if it is assumed that D_{r2} scales as the square root of frequency (i.e., $D_{r2} = C\sqrt{\omega}$), reasonable fitting to experimental LVE data can be obtained. The best fits for the 0.2% and 0.3% treated CNT suspensions are shown in Fig. 6. In these fittings, $C = 0.05 \text{ s}^{-0.5}$; whereas the concentration-dependent parameters N_p and β scaled with the CNT concentration. Although experimental G' and G'' data were not available at frequencies lower than 0.1 s^{-1} (due to the small torque generated), the model predicted $G' \propto \omega^2$ at very low frequencies and this is in agreement with the Brownian rod models described, for example, in Larson (1999). The only difference between the current model and the Brownian rod model is that the latter model predicted a plateau at high frequencies which was not observed experimentally for the treated CNT suspensions. Mathematically, the current model reduced to the rod model by setting $C = 0$ as shown in Fig. 7. Figures 7 and 8 show model predictions for G' , G'' and η^* by varying the values of C and β respectively. It is clear from these figures that G' is very sensitive to the values of C and β while G'' is not.

The results shown in Fig. 6 were obtained by combining Eqs. (25) and (26) with the assumption that D_{r2} scaled with the square root of the frequency. The same results can be obtained by applying the same assumption and solving Eqs. (12) and (13) with a linear closure relation and an effective diffusion coefficient given by Eq. (27). The consistency of the results confirms the approximations introduced in the derivation of Eqs. (25) and (26) were appropriate.

Despite the success of the fitting, an empirical relation where $D_{r2} = C\sqrt{\omega}$ was assumed and the exact physical meaning behind such a relation is unclear at this stage. It is, however, worth noting in the context of polymer kinetic theories that similar evolution of G' has been predicted by the Rouse model. Rouse model predicted that at low frequencies, $G' \propto \omega^2$ and at higher frequencies, $G' \propto \omega^{0.5}$. The factor of 0.5 is a result of the spacing of relaxation times in the Rouse model [Bird *et al.* (1977); Larson (1999)] and

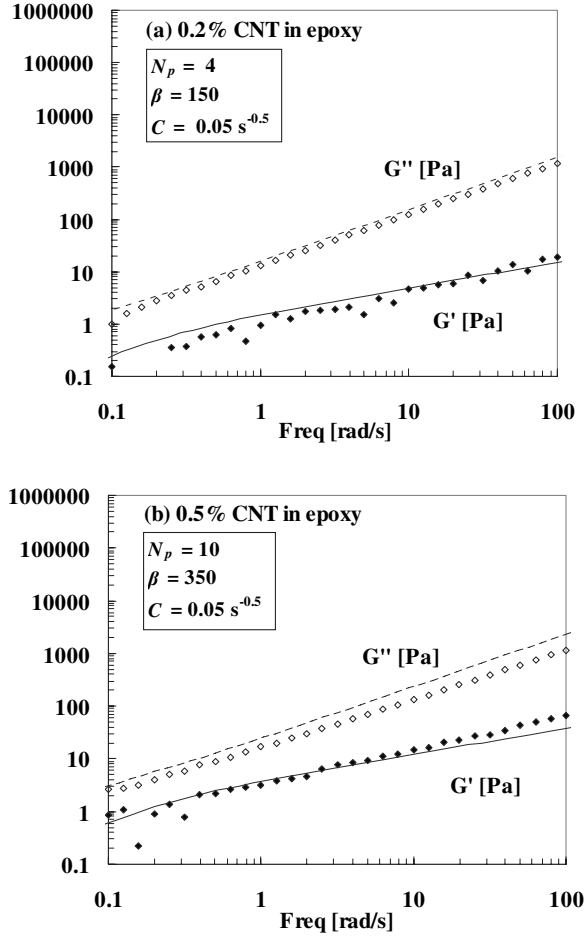


FIG. 6. Model fits to experimental LVE data of (a) 0.2% and (b) 0.5% treated CNTs in epoxy. N_p , β , and C are fitting parameters and the concentration-related parameters N_p and β scale with the concentration.

following a similar logic, it is probable that the experimental evolution of G' for chemically treated CNT suspensions was a result of multiple relaxation times. Experimental LVE data can be fitted using the Rouse approach by assuming CNTs as curved and elongated entities that can be divided into subsections; each represented by a pair of bead and spring. Such an approach, however, also implies that the elasticity of CNTs originated from the stretching of CNTs. At present, there is no consensus over the origin of mild elasticity for chemically treated CNT suspensions. Xu *et al.* (2005) proposed that the elasticity was due to stretching and bending of CNFs, whereas Hough *et al.* (2004) suggested that the elasticity originated from the interaction between CNTs instead of bending or stretching. The latter belief was also held by Dinsmore *et al.* (2006) in their treatment of colloidal dispersion, where they considered that the interactions between particles could be represented by conceptual springs.

In the current modeling, the treated CNTs were assumed to be essentially rigid, but we do not completely rule out the possibility that CNTs can bend in certain shear conditions. Duggal and Pasquali (2006) tagged some surfactant-stabilized CNTs with fluorescent dye and were able to estimate the persistence length of CNT suspended in water. They

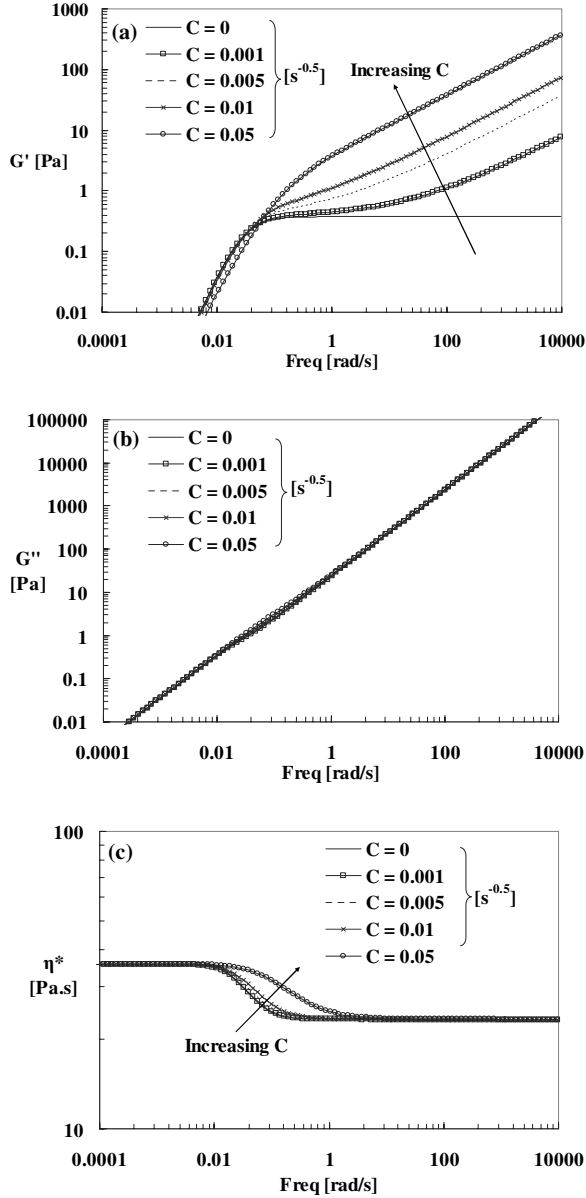


FIG. 7. Sensitivity of (a) G' , (b) G'' , and (c) η^* to fitting parameter C . ($N_p=10$, $\beta=1000$.)

computed the persistence length to be in the order of 7–74 μm (in the absence of any external field). Given the typical length of the treated CNTs in the current study was less than 1 μm , we tend to believe that the treated CNTs were essentially rigid. For future work, it is of interest to study in greater detail the bending stiffness of the chemically treated CNT and identify the effect of bending (if any) on the rheological response of treated CNT suspensions. Intuitively, the elastic energy can be stored up due to the bending of CNT and could therefore potentially contribute toward the elasticity of the suspension.

Based on LVE experimental data alone, the exact origin for the mild elasticity of

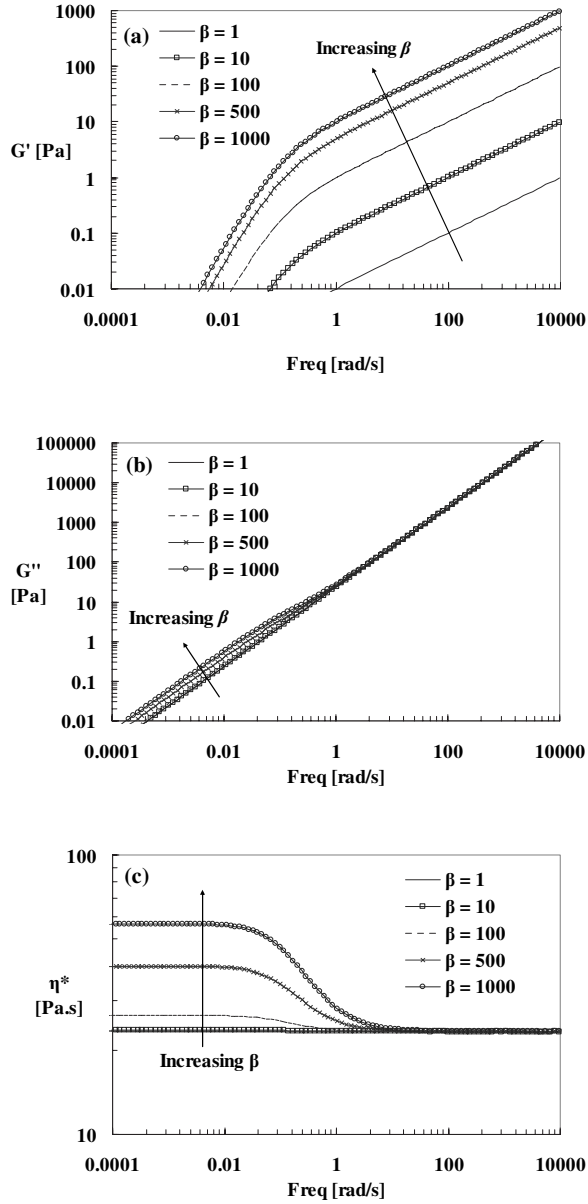


FIG. 8. Sensitivity of (a) G' , (b) G'' , and (c) η^* to fitting parameter β . ($N_p=10$, $C=0.05 \text{ s}^{-0.5}$.)

treated CNT suspensions remains inconclusive. Both explanations are possible and are not mutually exclusive. However, there is an evidence in step strain experiments showing the presence of a weakly interconnected CNT network. Therefore, we tend to believe that the weak network has contributed to the mild elasticity of treated CNT suspensions.

V. STEP STRAIN EXPERIMENTAL DATA

A series of step strain experiments were carried out in order to reveal more detailed relaxation behavior of the treated CNT suspensions and offer insights into the origin of

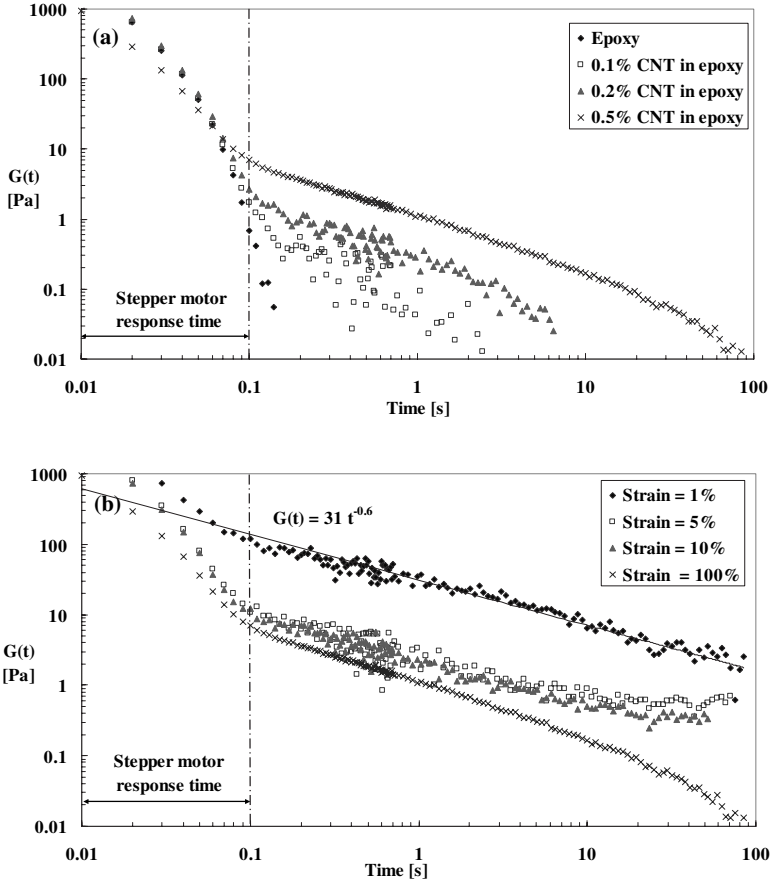


FIG. 9. (a) Stress relaxation after a finite step strain ($\gamma_0=100\%$) was applied to different concentrations of CNT suspensions. (b) Stress relaxation data for the 0.5% CNT suspension with varying magnitudes of step strain.

elasticity. A finite step strain (γ_0) was applied to the CNT suspensions and the process of stress relaxation was followed using the ARES strain-controlled rheometer. Figure 9(a) shows the time evolution of the relaxation modulus (G), which is defined as $G(\gamma, t) = \tau / \gamma_0$, for suspensions with different concentrations of CNT. The stepper motor had a response time of about 0.1s (as indicated in the figure) and for the epoxy matrix, the stress dissipated almost instantaneously consistent with the fact that it behaved essentially as a simple Newtonian fluid in both steady shear and LVE experiments. Addition of CNTs prolonged the stress relaxation process and the CNT suspensions resembling the response of a viscoelastic fluid. The effect was progressive as the CNT concentration increased and this confirmed the earlier LVE experiments that the addition of CNTs effectively increased the elasticity of the system as a whole.

Different magnitudes of strain were applied to the 0.5% CNT suspension. Figure 9(b) shows a strain dependence in terms of the final mode of stress dissipation. At small strains (1%, 5%, and 10%), the CNT suspension responded essentially as an entangled gel with a strain softening characteristic associated with a long relaxation time [see, for example, Mours and Winter (1996) and Winter (1999)]. At high strain, the CNT suspension dissipated in a dominantly viscous fluid manner. Similar strain-dependence phenomenon was reported by Guskey and Winter (1991) for a thermotropic liquid crystalline

polymer in the nematic state. Intuitively, the strain-dependence relaxation process can be explained by the yielding of a network [Mewis and Meire (1984); Amari and Watanabe (1980)]. Depending on the strength of the network, if a large enough strain is applied, the network will be broken down and will finally dissipate as a fluid. The network for the 0.5% suspension is considered to be a relatively weak one and broke down at a strain level higher than 10%. The findings have two implications. First, it is highly probable that the mild elasticity as observed in LVE measurements is linked to the presence of a weak CNT network, and second, the effect of elasticity is negligible at high strain level, in line with the concept of a nonlinear damping parameter proposed by Wagner (1976).

In terms of the orientation model, the first term in Eq. (12) involving the strain rate tensor vanishes in the absence of flow after the application of step strain and the equation reduces to

$$\tau_{12} = \beta D_r a_{12}. \quad (30)$$

Similarly, Eq. (13) becomes

$$\frac{da_{12}}{dt} = -6D_r a_{12}. \quad (31)$$

If D_r is assumed to be independent of a_{12} , integration of Eq. (31) would give

$$a_{12} = C e^{-6D_r t}, \quad (32)$$

where C is an integration constant corresponding to the initial orientation. This gives

$$\tau_{12} = C\beta D_r e^{-6D_r t} \quad \text{or} \quad G(t) = \frac{\tau_{12}}{\gamma_0} = \frac{C\beta}{\gamma_0} D_r e^{-6D_r t}. \quad (33)$$

Equation (33) predicts an exponential decay in stress relaxation after the application of step strain. This is, however, inconsistent with the experimental results shown in Fig. 9 where relaxation modulus $G(t)$ was found to exhibit essentially a power-law decay over intermediate time scales ($0.1 \text{ s} < t < 10 \text{ s}$). Successful quantitative fitting to experimental data requires the D_r in the orientation model to be a certain function of the orientation a_{12} , as in the case of liquid crystal polymer modeling where the nematic potential depends on the molecular orientation distribution [see, for example, Doi and Edwards (1986)]. The orientation dependence of rotary diffusion coefficient could possibly be explained by the presence of repulsion force between CNTs after chemical treatment. This again supports the use of an effective diffusion coefficient term, which contains not only rotary Brownian diffusion but also other possible randomizing events such as repulsion. It is conjectured that CNTs were isotropically oriented prior to the step strain and subsequent step strain has led to the (partial) alignment of CNTs. In the absence of flow, the orientation of the partially oriented CNTs then began to randomize as a result of the Brownian motion and possible repulsion. Repulsion (if any) would be minimized when the CNTs were isotropically oriented and with their relative distance maximized; whereas the progressive alignment of CNTs would decrease the relative distance and therefore increase the repulsion between CNTs. This implies that the effective diffusion coefficient would start off at a high value after the initial step strain oriented some of the CNTs and its magnitude would decrease as the orientation of CNT became randomized again. It is clear from the analysis that quantitative fitting to step strain experimental data is possible, but it also requires certain assumption about D_r as a function of a_{12} , further increasing the complexity of the current model. For this reason, the quantitative fitting to step strain experimental data is not included in this paper, of which the main focus is to develop a

self-consistent model for describing both steady shear and LVE data.

VI. A GENERALIZED ORIENTATION MODEL FOR DESCRIBING BOTH STEADY SHEAR AND LINEAR VISCOELASTICITY DATA

In Sec. III, a FP based model was successfully developed for steady shear flow using a rotary diffusion coefficient D_{r1} as a primary variable parameter. In Sec. IV, again a FP based equation can be derived to reproduce the LVE response and in this case using a differently formulated diffusion coefficient D_{r2} . Clearly, it is desirable to have a constitutive equation that is self-consistent for general deformation, including steady shear and LVE. The situation has similarities to the viscometric response of molten polymers, where Maxwell modeling successfully described LVE and an additional strain softening parameter was introduced to describe the full nonlinear response [Wagner (1976)].

For the case of the FP formulation, it is possible to reconcile both LVE and nonlinear steady shear response by formulating the constitutive equation in the following way:

$$\text{Constitutive equation: } \underline{\underline{\tau}}^f = 2\eta N_p(\underline{\underline{a}}:\underline{\underline{D}}) + \beta(D_{r1} + \chi(\gamma)D_{r2})\left(\underline{\underline{a}} - \frac{\underline{\underline{I}}}{3}\right),$$

$$\text{Fokker-Planck equation: } \frac{d\psi}{dt} + \frac{\partial}{\partial \underline{\underline{p}}}\left(\frac{d\underline{\underline{p}}}{dt}\psi\right) = \frac{\partial}{\partial \underline{\underline{p}}}\left((D_{r1} + \chi(\gamma)D_{r2})\frac{\partial \psi}{\partial \underline{\underline{p}}}\right),$$

where

$$\chi(\bar{\gamma}) = \begin{cases} \frac{\gamma_c - \gamma}{\gamma_c} & \text{if } \gamma \leq \gamma_c \\ 0 & \text{if } \gamma > \gamma_c, \end{cases}$$

and

$$D_{r2} = C\sqrt{\omega}.$$

In general, the second term in the constitutive equation becomes negligible compared with the first term in steady shear and large strain deformation [Eqs. (15) and (16)] and the effect of randomizing events is mainly accounted for by the FP equation. In both the constitutive equation and FP equation, the rotary diffusion coefficient is replaced by an effective diffusion coefficient $\hat{D}_r = (D_{r1} + \chi(\gamma)D_{r2})$. The effective diffusion coefficient consists of two elements: (1) a constant diffusion coefficient D_{r1} representing Brownian motion and tube-tube hydrodynamic interactions. Its value can be identified from the steady shear data fitting and a constant value was found to be sufficient in describing steady shear responses; (2) an empirical diffusion coefficient D_{r2} that corresponds to a weakly interconnected CNT network and it is active only at small strains. Phenomenologically, D_{r2} was found to be proportional to the square root of frequency in small-amplitude oscillatory flows. When the strain applied exceeds a certain critical strain (γ_c), the weak network is destroyed and only D_{r1} remains.

VII. CONCLUSIONS

Experimental results for shear thinning and viscoelastic data have been presented for treated CNT suspensions. A FP orientation diffusion model has been developed and has been shown to predict the base shear-thinning response for certain chemically treated CNT suspensions. Untreated CNT suspensions in epoxy resin have been reported to

exhibit an optical microstructure [Rahatekar *et al.* (2006); Ma *et al.* (2008a)]; however, treated CNT suspensions reported in this paper showed no discernable optical microstructure, indicating that the suspensions were well dispersed at least on a microscale. The modeling of treated CNTs involves solving the FP diffusion equation in a closed form and fitting the experimental shear-thinning data to two adjustable parameters N_p and D_{r1} . The quality of the fit was considered reasonable although a single value of rotary diffusion coefficient D_{r1} was insufficient to fit the whole range of data exactly. The success of the model suggests that the CNTs are behaving essentially as high aspect ratio rigid rods with a very low rotary diffusion coefficient and that shear is able to align the rods in the direction of flow. The findings have relevance to the processing of CNTs where in some cases a preferential orientation can have a strategic advantage and there are other situations where an isotropic distribution of CNTs is desired.

In terms of LVE properties, CNT suspensions exhibited an elastic behavior that is different from ordinary non-Brownian fiber or Brownian rod suspensions. Using a rotary diffusion term that does not depend on the applied frequency was found to be inappropriate in describing the evolution of storage modulus (G') and loss modulus (G'') as a function of frequency. The experimentally observed elasticity was considered to be relatively mild and suppressed when subject to large deformations, according to step strain experiments. It is conjectured that the mild elasticity is due to the presence of a weakly interconnected CNT network. Experimental G' and G'' data were fitted using an effective diffusion coefficient and an empirical relation was identified. Finally, a unified FP based orientation model was formulated to describe both steady shear and viscoelastic responses of the treated CNT suspensions.

ACKNOWLEDGMENTS

The authors would like to thank Nanocomposites Inc. for providing the carbon nanotubes. A. Ma would also like to acknowledge the Croucher Foundation Scholarship and the Overseas Research Students Awards Scheme (ORSAS) for providing financial support.

APPENDIX: NUMERICAL ISSUES

To solve the FP equation, there are two simple options to discretize the unit sphere surface: (i) the use of Cartesian coordinates or (ii) the use of a spherical coordinates system. In the latter case, the equation is defined in the domain $(\phi, \theta) \in \Omega \equiv [0, 2\pi) \times [0, \pi]$. This essentially simplifies the application of discretization techniques, such as finite differences and finite elements, and allows for a computation with higher accuracy. The main difficulty associated with the use of spherical coordinates is the singularity at angles $\theta=0$ and $\theta=\pi$, but this is not a problem if it is defined that $\theta=0$ is perpendicular to both the shear and vorticity directions.

By assuming that the diffusion coefficient does not depend on the conformation coordinates, the spherical representation of the FP equation reads as

$$\frac{\partial \psi}{\partial t} + \nabla_{\text{sph}} \cdot (\underline{p} \psi) - D_r \Delta_{\text{sph}} \psi = 0 \Leftrightarrow L(\psi) = 0, \quad (\text{A1})$$

with

$$L(\bullet) = \frac{d(\bullet)}{dt} + \nabla_{\text{sph}} \cdot (\underline{\dot{p}}(\bullet)) - D_r \Delta_{\text{sph}}(\bullet) \quad (\text{A2})$$

and

$$\nabla_{\text{sph}} \cdot (\underline{\dot{p}}\psi) = \frac{1}{\sin \theta} \frac{\partial}{\partial \theta} (\sin \theta [\underline{\dot{p}}]_{\theta} \psi) + \frac{1}{\sin \theta} \frac{\partial}{\partial \varphi} ([\underline{\dot{p}}]_{\varphi} \psi), \quad (\text{A3})$$

where $[\underline{\dot{p}}]_{\theta}$ and $[\underline{\dot{p}}]_{\varphi}$ refer to the θ and φ components of vector $\underline{\dot{p}}$, respectively; and finally

$$\Delta_{\text{sph}} \psi = \frac{1}{\sin \theta} \frac{\partial}{\partial \theta} \left(\sin \theta \frac{\partial \psi}{\partial \theta} \right) + \frac{1}{\sin^2 \theta} \frac{\partial^2 \psi}{\partial \varphi^2}. \quad (\text{A4})$$

If the finite difference method is applied and a grid on Ω is defined, consisting of $N \times M$ nodes, then each grid node will be characterized by two indices (i, j) ($1 \leq i \leq N$ and $1 \leq j \leq M$) and the associated coordinates (φ_i, θ_j) will be given as $\varphi_i = (i-1)h_{\varphi}$ and $\theta_j = (j-1)h_{\theta}$, where $h_{\varphi} = 2\pi/N$ and $h_{\theta} = \pi/(M-1)$.

The coordinate transformation is given by

$$x = \sin \theta \cos \varphi,$$

$$y = \sin \theta \sin \varphi, \quad (\text{A5})$$

$$z = \cos \theta.$$

Now, the discrete form of the FP equation is considered at each internal grid point ($2 \leq i \leq N-1$ and $2 \leq j \leq M-1$), assuming the following finite difference formulas:

$$\begin{aligned} \left. \frac{\partial(\bullet)}{\partial \varphi} \right|_{i,j} &= \frac{(\bullet)|_{i+1,j} - (\bullet)|_{i-1,j}}{2h_{\varphi}}, \\ \left. \frac{\partial(\bullet)}{\partial \theta} \right|_{i,j} &= \frac{(\bullet)|_{i,j+1} - (\bullet)|_{i,j-1}}{2h_{\theta}}, \\ \left. \frac{\partial^2(\bullet)}{\partial \varphi^2} \right|_{i,j} &= \frac{(\bullet)|_{i+1,j} - 2(\bullet)|_{i,j} + (\bullet)|_{i-1,j}}{h_{\varphi}^2}, \\ \left. \frac{\partial^2(\bullet)}{\partial \theta^2} \right|_{i,j} &= \frac{(\bullet)|_{i,j+1} - 2(\bullet)|_{i,j} + (\bullet)|_{i,j-1}}{h_{\theta}^2}. \end{aligned} \quad (\text{A6})$$

Time discretization is performed using an appropriate difference formula. If the n th time step ($n \geq 1$) is denoted by the superscript n [i.e., $(\bullet)_{i,j}^n = (\bullet)(\varphi = \varphi_i, \theta = \theta_j, t = n\Delta t)$], the time derivative can be approximated by

$$\left. \frac{\partial(\bullet)}{\partial t} \right|_{i,j}^n = \frac{(\bullet)_{i,j}^n - (\bullet)_{i,j}^{n-1}}{\Delta t}. \quad (\text{A7})$$

At the boundary nodes consisting of $i=1$ or $i=N$ finite difference formulas can also be defined taking into account the periodicity, that is, for (i, j) with $i=1$,

$$\left. \frac{\partial(\bullet)}{\partial\varphi} \right|_{1,j} = \frac{(\bullet)|_{2,j} - (\bullet)|_{N,j}}{2h_\varphi}, \quad (\text{A8})$$

$$\left. \frac{\partial^2(\bullet)}{\partial\varphi^2} \right|_{1,j} = \frac{(\bullet)|_{2,j} - 2(\bullet)|_{1,j} + (\bullet)|_{N,j}}{h_\varphi^2},$$

and for (i,j) with $i=N$,

$$\left. \frac{\partial(\bullet)}{\partial\varphi} \right|_{N,j} = \frac{(\bullet)|_{1,j} - (\bullet)|_{N-1,j}}{2h_\varphi}, \quad (\text{A9})$$

$$\left. \frac{\partial^2(\bullet)}{\partial\varphi^2} \right|_{N,j} = \frac{(\bullet)|_{1,j} - 2(\bullet)|_{N,j} + (\bullet)|_{N-1,j}}{h_\varphi^2}.$$

Now, the finite difference form of the FP equation can be written for each node (i,j) with $1 \leq i \leq N$ and $2 \leq j \leq M-1$, at each time $t=n\Delta t$ ($n \geq 1$),

$$L(\psi)|_{i,j}^n = 0 \quad \forall (i,j) \in [1, \dots, N] \times [2, \dots, M-1], \quad (\text{A10})$$

which leads to a linear system of $N \times (M-2)$ algebraic equations involving $N \times M$ nodal values $\psi_{i,j}^n$. This system of equations must be completed with the equations for the upper and lower nodes ($j=1$ and $j=M$). At these nodes, a numerical difficulty appears because all the upper nodes ($i, j=M$) correspond to the same point on the unit sphere (the upper pole) and the same for the lower ones. Due to the symmetry of the distribution function, the same unknown value ξ is assigned to all these nodes, that is,

$$\begin{aligned} \psi_{i,j=1}^n &= \xi \quad \forall i \in [1, \dots, N], \\ \psi_{i,j=M}^n &= \xi \quad \forall i \in [1, \dots, N]. \end{aligned} \quad (\text{A11})$$

The $N \times M$ discrete equations involve $N \times M + 1$ unknowns, $N \times M$ nodal values $\psi_{i,j}^n$, and the introduced ξ value. An additional equation must be introduced to define the solution. For this purpose, the discrete form of the normality condition [Eq. (5)] can be introduced, which leads to

$$\sum_{i=1}^N \sum_{j=1}^M A_{ij} \psi_{i,j}^n = 1, \quad (\text{A12})$$

where A_{ij} represents an area on the unit sphere that is related to the node (i,j) ,

$$A_{ij} = h_\theta \sin(\theta_j) h_\varphi. \quad (\text{A13})$$

The linear system can then be solved to obtain the nodal values of the orientation distribution function $\psi_{i,j}^n$ at time $t=n\Delta t$.

The discretisation of the Fokker–Planck equation leads to a system of algebraic linear equations and each equation represents the evolution of a fraction of tubes oriented in a certain direction. Each of these linear equations corresponds to a particular orientation on the unit sphere and represents the balance between the tubes coming from and leaving to its “neighboring” orientations, as a result of shear flow and other randomizing events such as Brownian motion and tube–tube hydrodynamic interaction. It was verified that the numerical solutions reported in this manuscript did not depend on the numbers N and M , further confirming the solutions were good approximation to the actual solutions of the kinetic equation Eq. (8).

The time step must be carefully chosen to ensure the stability conditions related to the evolution problem and the convective character. If the time step becomes too small due to large Peclet numbers defined at high shear rates, some upwinding stabilization could be applied. (The Peclet number is defined as the ratio between the maximum fiber rotation velocity and the diffusion coefficient.) However, it is well known that the upwinding introduces certain amount of nonphysical over diffusion. To avoid these nonphysical effects, simulations were performed without any stabilization, although more computation time is required.

References

- Advani, S. G. and Ch. L. Tucker, "Closure approximations for three-dimensional structure tensors," *J. Rheol.* **34**, 367–386 (1990).
- Advani S. G. (ed.), *Flow and Rheology in Polymer Composites Manufacturing* (Elsevier, New York, 1994).
- Ajayan, P. M., O. Stephan, C. Colliex, and C. Trauth, "Aligned carbon nanotube arrays formed by cutting a polymer resin-nanotube composite," *Science* **265**, 1212–1215 (1994).
- Amari, T. and K. Watanabe, "Stress relaxation of carbon black-linseed oil suspensions," *J. Soc. Rheol., Jpn.* **8**, 80–83 (1980).
- Ammar, A. and F. Chinesta, "A particle strategy for solving the Fokker–Planck equation governing the fibre orientation distribution in steady recirculating flows involving short fibre suspensions," *Lectures Notes on Computational Science and Engineering* (Springer, New York, 2005).
- Ammar, A., B. Mokdad, F. Chinesta, and R. Keunings, "A new family of solvers for some classes of multidimensional partial differential equations encountered in kinetic theory modeling of complex fluids," *J. Non-Newtonian Fluid Mech.* **139**, 153–176 (2006a).
- Ammar, A., D. Ryckelynck, F. Chinesta, and R. Keunings, "On the reduction of kinetic theory models related to finitely extensible dumbbells," *J. Non-Newtonian Fluid Mech.* **134**, 136–147 (2006b).
- Banerjee, S., M. G. C. Kahn, and S. S. Wong, "Rational chemical strategies for carbon nanotube functionalization," *Chem.-Eur. J.* **9**, 1898–1908 (2003).
- Batchelor, G. K., "The stress system in a suspension of force-free particles," *J. Fluid Mech.* **41**, 545–570 (1970).
- Batchelor, G. K., "The stress generated in a nondilute suspension of elongated particles by pure straining motion," *J. Fluid Mech.* **46**, 813–829 (1971).
- Bird, R. B., C. F. Curtiss, R. C. Armstrong, and O. Hassager, *Dynamics of Polymeric Liquids: Kinetic Theory* (Wiley, New York, 1977), Vol. 2.
- Bower, C., M. R. Mackley, B. A. S. Smeulders, D. Barker, and J. Hayes, "The rheology, processing, and microstructure of complex fluids," in *Modern Aspects of Colloid Dispersions*, edited by R. H. Ottewill and A. R. Rennie (Kluwer, Netherlands, 1998).
- Calvert, P., "Nanotube composites: A recipe for strength," *Nature (London)* **399**, 210–211 (1999).
- Carter, L. F., "A study of the rheology of suspensions of rod-shaped particles in a Navier–Stokes liquid," Ph.D. dissertation, University of Michigan, Ann Arbor, 1967.
- Chan, C. J. and E. M. Terentjev, "Nonequilibrium statistical mechanics of liquid crystals: Relaxation, viscosity and elasticity," *J. Phys. A: Math. Theor.* **40**, R103–R148 (2007).
- Chaubal, C. V., A. Srinivasan, O. Egecioglu, and L. G. Leal, "Smoothed particle hydrodynamics techniques for the solution of kinetic theory problems," *J. Non-Newtonian Fluid Mech.* **70**, 125–154 (1997).
- Chauviere, C. and A. Lozinski, "Simulation of dilute polymer solutions using a Fokker–Planck equation," *Comput. Fluids* **33**, 687–696 (2004).
- Chinesta, F., G. Chaidron, and A. Poitou, "On the solution of the Fokker–Planck equation in steady recirculating flows involving short fibre suspensions," *J. Non-Newtonian Fluid Mech.* **113**, 97–125 (2003).
- Collins, P. G., K. Bradley, M. Ishigami, and A. Zettl, "Extreme oxygen sensitivity of electronic properties of carbon nanotubes," *Science* **287**, 1801–1804 (2000).

- de Heer, W. A., A. Chatelain, and D. Ugarte, "A carbon nanotube field-emission electron source," *Science* **270**, 1179–1180 (1995).
- Dinsmore, A. D., V. Prasad, I. Y. Wong, and D. A. Weitz, "Microscopic structure and elasticity of weakly aggregated colloidal gels," *Phys. Rev. Lett.* **96**, 185502 (2006).
- Doi, M. and S. F. Edwards, *The Theory of Polymer Dynamic* (Clarendon, Oxford, 1986).
- Donald, A. M., A. H. Windle, and S. Hanna, *Liquid Crystalline Polymers* (Cambridge University Press, Cambridge, 2006).
- Dresselhaus, M. S. and H. Dai, "Carbon nanotubes: Continued innovations and challenges," *MRS Bull.* **29**, 237–243 (2004).
- Duggal, R. and M. Pasquali, "Dynamics of individual single-walled carbon nanotubes in water by real-time visualization," *Phys. Rev. Lett.* **96**, 246104 (2006).
- Dupret, F. and V. Verleye, "Modeling the flow of fibre suspensions in narrow gaps," in *Advances in the Flow and Rheology of Non-Newtonian Fluids*, edited by D. A. Siginer, D. De Kee, and R. P. Chabra, Rheology Series (Elsevier, New York, 1999), p. 1347–1398.
- Dyke, C. A. and J. M. Tour, "Unbundled and highly functionalized carbon nanotubes from aqueous reactions," *Nano Lett.* **3**, 1215–1218 (2003).
- Dyke, C. A. and J. M. Tour, "Overcoming the insolubility of carbon nanotubes through high degrees of sidewall functionalization," *Chem.-Eur. J.* **10**, 812–817 (2004).
- Ericson, L. M., H. Fan, H. Peng, V. A. Davis, W. Zhou, J. Sulpizio, Y. Wang, R. Booker, J. Vavro, C. Guthy, A. Nicholas, G. Parra-Vasquez, M. J. Kim, S. Ramesh, R. K. Saini, C. Kittrell, G. Lavin, H. Schmidt, W. W. Adams, W. E. Billups, M. Pasquali, W. F. Hwang, R. H. Hauge, J. E. Fischer, and R. E. Smalley, "Macroscopic, neat, single-walled carbon nanotube fibers," *Science* **305**, 1447–1450 (2004).
- Fan, Z. and S. G. Advani, "Characterization of orientation state of carbon nanotubes in shear flows," *Polymer* **46**, 5232–5240 (2005).
- Fan, Z. and S. G. Advani, "Rheology of multiwall carbon nanotube suspensions," *J. Rheol.* **51**, 585–604 (2007).
- Folgar, F. and C. L. Tucker III, "Orientation behaviour of fibers in concentrated suspensions," *J. Reinf. Plast. Compos.* **3**, 98–119 (1984).
- Forest, M. G. and Q. Wang, "Hydrodynamic theories for mixtures of polymers and rodlike liquid crystalline polymers," *Phys. Rev. E* **72**, 041805 (2005).
- Fry, D., B. Langhorst, H. Kim, E. Grulke, H. Wang, and E. K. Hobbie, "Anisotropy of sheared carbon-nanotube suspensions," *Phys. Rev. Lett.* **95**, 038304 (2005).
- Ganani, E. and R. L. Powell, "Rheological properties of rodlike particles in a Newtonian and non-Newtonian fluid," *J. Rheol.* **30**, 995–1013 (1986).
- Grmela, M., "Stress tensor in fiber suspensions," *Phys. Lett. A* **372**, 4267 (2008).
- Guskey, S. M. and H. H. Winter, "Transient shear behavior of a thermotropic liquid crystalline polymer in the nematic state," *J. Rheol.* **35**, 1191–1207 (1991).
- Hinch, E. J. and L. G. Leal, "The effect of Brownian motion on the rheological properties of a suspension of nonspherical particles," *J. Fluid Mech.* **52**, 683–712 (1972).
- Hinch, E. J. and L. G. Leal, "Constitutive equations in suspension mechanics. Part I," *J. Fluid Mech.* **71**, 481–495 (1975).
- Hinch, E. J. and L. G. Leal, "Constitutive equations in suspension mechanics. Part II," *J. Fluid Mech.* **76**, 187–208 (1976).
- Hough, L. A., M. F. Islam, P. A. Janmey, and A. G. Yodh, "Viscoelasticity of single wall carbon nanotube suspensions," *Phys. Rev. Lett.* **93**, 168102 (2004).
- Huang, Y. Y., S. V. Ahir, and E. M. Terentjev, "Dispersion rheology of carbon nanotubes in a polymer matrix," *Phys. Rev. B* **73**, 125422 (2006).
- Iijima, S., "Helical microtubules of graphitic carbon," *Nature (London)* **354**, 56 (1991).
- Jeffery, G. B., "The motion of ellipsoidal particles immersed in a viscous fluid," *Proc. R. Soc. London, Ser. A* **102**, 161–179 (1922).
- Keunings, R., in *Rheology Reviews*, edited by D. M. Binding and K. Walters (British Society of Rheology, Aberystwyth, 2004), pp. 67–98.

- Kinloch, I. A., S. A. Roberts, and A. H. Windle, "A rheological study of concentrated aqueous nanotube dispersions," *Polymer* **43**, 7483–7491 (2002).
- Kong, J., N. Franklin, C. Zhou, S. Peng, K. Cho, and H. Dai, "Nanotube molecular wires as chemical sensors," *Science* **287**, 622–625 (2000).
- Kordás, K., T. Mustonen, G. Tóth, H. Jantunen, M. Lajunen, C. Soldano, S. Talapatra, S. Kar, R. Vajtai, and P. M. Ajayan, "Inkjet printing of electrically conductive patterns of carbon nanotubes," *Small* **2**, 1021–1025 (2006).
- Kozlov, M. E., R. C. Capps, W. M. Sampson, V. H. Ebron, J. P. Ferraris, and R. H. Baughman, "Spinning solid and hollow polymer-free carbon nanotube fibers," *Adv. Mater. (Weinheim, Ger.)* **17**, 614–617 (2005).
- Larson, R. G., *The Structure and Rheology of Complex Fluids* (Oxford University Press, New York, 1999), pp. 261–355.
- Laso, M., L. M. Muneta, V. Müller, A. Alcazar, F. Chinesta, and A. Ammar, in *Multiscale Modeling of Polymer Properties*, edited by E. A. Perpète and M. Laso (Elsevier, The Netherlands, 2006), pp. 359–402.
- Lozinski, A. and C. Chauviere, "A fast solver for Fokker–Planck equation applied to viscoelastic flows calculations: 2D FENE model," *J. Comput. Phys.* **189**, 607–625 (2003).
- Ma, A. W. K., F. Chinesta, A. Ammar, and M. R. Mackley, "Rheological modeling of carbon nanotube aggregate suspensions," *J. Rheol.* **52**, 1311–1330 (2008a).
- Ma, A. W. K., F. Chinesta, and M. R. Mackley, in *Science and Applications of Carbon Nanotubes*, edited by M. Chipara (Blackwell, USA, 2008b).
- Ma, W. K. A., F. Chinesta, T. Tuladhar, and M. R. Mackley, "Filament stretching of carbon nanotube suspensions," *Rheol. Acta* **47**, 447–457 (2008c).
- Mackley, M. R., S. Wannaborworn, P. Gao, and F. Zhao, "The optical microscopy of sheared liquids using a newly developed optical stage," *J. Microsc.* **69**, 25–27 (1999).
- Mewis, J. and C. Meire, "Yielding in weakly flocculated systems," in *Advances in Rheology: Fluids*, edited by B. Mena, A. García-Rejón, and C. Rangel-Nafaille (Elsevier, New York, 1984), Vol. 2.
- Mours, M. and H. H. Winter, "Relaxation patterns of nearly critical gels," *Macromolecules* **29**, 7221–7229 (1996).
- Öttinger, H. C. and M. Laso, "Smart polymers in finite element calculation," in *Theoretical and Applied Rheology*, edited by P. Moldenaers and R. Keunings, Proceedings of the XIth International Congress on Rheology, Brussels, pp. 286–288 (1992).
- Petrie, C. J. S., "The rheology of fibre suspensions," *J. Non-Newtonian Fluid Mech.* **87**, 369–402 (1999).
- Pittman, J. F. T. and J. Bayram, "Extensional flow of polydispersed fibre suspensions in free-falling liquid jets," *Int. J. Multiphase Flow* **16**, 545–559 (1990).
- Prager, S., "Stress-strain relations in a suspension of dumbbells," *J. Rheol.* **1**, 53–62 (1957).
- Rahatekar, S. S., K. K. K. Koziol, S. A. Butler, J. A. Elliott, M. S. P. Shaffer, M. R. Mackley, and A. H. Windle, "Optical microstructure and viscosity enhancement for an epoxy resin matrix containing multiwall carbon nanotubes," *J. Rheol.* **50**, 599–610 (2006).
- Rinzler, A. G., J. H. Hafner, P. Nikolaev, P. Nordlander, D. T. Colbert, R. E. Smalley, L. Lou, S. G. Kim, and D. Tománek, "Unraveling nanotubes: Field emission from an atomic wire," *Science* **269**, 1550–1553 (1995).
- Safadi, B., R. Andrews, and E. A. Grulke, "Multiwalled carbon nanotube polymer composites: Synthesis and characterization of thin films," *J. Appl. Polym. Sci.* **84**, 2660–2669 (2002).
- Saito, S., "Carbon nanotubes for next-generation electronics devices," *Science* **278**, 77–78 (1997).
- Sandler, J., M. S. P. Shaffer, T. Prasse, W. Bauhofer, K. Schulte, and A. H. Windle, "Development of a dispersion process for carbon nanotubes in an epoxy matrix and the resulting electrical properties," *Polymer* **40**, 5967–5971 (1999).
- Shaffer, M. S. P., X. Fan, and A. H. Windle, "Dispersion and packing of carbon nanotubes," *Carbon* **36**, 1603–1612 (1998).
- Shaqfeh, E. S. G. and G. H. Fredricksen, "The hydrodynamic stress in a suspension of rods," *Phys. Fluids A* **2**, 7–24 (1990).
- Song, Y. K. and J. R. Youn, "Influence of dispersion states of carbon nanotubes on physical properties of epoxy nanocomposites," *Carbon* **43**, 1378–1385 (2005).

- Tans, S. J., A. R. M. Verschueren, and C. Dekker, "Room-temperature transistor based on a single carbon nanotube," *Nature (London)* **393**, 49–52 (1998).
- Vigolo, B., A. Pénicaud, C. Coulon, C. Sauder, R. Pailler, C. Journet, P. Bernier, and P. Poulin, "Macroscopic fibers and ribbons of oriented carbon nanotubes," *Science* **290**, 1331–1334 (2000).
- Wagner, M. H., "Analysis of time-dependent nonlinear stress-growth data for shear and elongational flow of a low-density branched polyethylene melt," *Rheol. Acta* **15**, 136–142 (1976).
- Winter, H. H., "Soft polymeric materials near the transition from liquid to solid state," *Korea-Aust. Rheol. J.* **11**, 275–278 (1999).
- Xu, J., S. Chatterjee, K. W. Koelling, Y. Wang, and S. E. Bechtel, "Shear and extensional rheology of carbon nanofibers suspensions," *Rheol. Acta* **44**, 537–562 (2005).