



HAL
open science

Distribution and population structure of the anther smut *Microbotryum silenes-acaulis* parasitizing an arctic-alpine plant

Britta Bueker, Chris Eberlein, Pierre P. Gladieux, Angela Schaefer, Alodie Snirc, Dominic J. Bennett, Dominik Begerow, Michael E. Hood, Tatiana Giraud

► **To cite this version:**

Britta Bueker, Chris Eberlein, Pierre P. Gladieux, Angela Schaefer, Alodie Snirc, et al.. Distribution and population structure of the anther smut *Microbotryum silenes-acaulis* parasitizing an arctic-alpine plant. *Molecular Ecology*, 2016, 25 (3), pp.811–824. 10.1111/mec.13512 . hal-01497390

HAL Id: hal-01497390

<https://hal.science/hal-01497390>

Submitted on 28 May 2020

HAL is a multi-disciplinary open access archive for the deposit and dissemination of scientific research documents, whether they are published or not. The documents may come from teaching and research institutions in France or abroad, or from public or private research centers.

L'archive ouverte pluridisciplinaire **HAL**, est destinée au dépôt et à la diffusion de documents scientifiques de niveau recherche, publiés ou non, émanant des établissements d'enseignement et de recherche français ou étrangers, des laboratoires publics ou privés.

Received Date : 08-Jul-2015
Revised Date : 02-Nov-2015
Accepted Date : 26-Nov-2015
Article type : Original Article

Distribution and population structure of the anther smut

Microbotryum silenes-acaulis parasitizing an arctic-alpine plant

Britta Bueker*^{1,2}, Chris Eberlein*^{1,3}, Pierre Gladieux*^{4,5}, Angela Schaefer¹, Alodie Snirc⁴,
Dominic J. Bennett^{4,6}, Dominik Begerow¹, Michael E. Hood², Tatiana Giraud⁴

¹Lehrstuhl für Evolution und Biodiversität der Pflanzen, AG Geobotanik, Ruhr-Universität Bochum, Universitätsstraße 150, 44780 Bochum, Germany

²Department of Biology, Amherst College, 220 South Pleasant Street, Amherst MA 01002, USA

³Institut de Biologie Intégrative et des Systèmes, Département de Biologie, PROTEO, Université Laval, Pavillon Charles-Eugène-Marchand, 1030 Avenue de la Médecine, Quebec, QC, Canada G1V 0A6

⁴ Ecologie Systématique Evolution, CNRS, Univ. Paris-Sud, AgroParisTech, Université Paris Saclay, 91400 Orsay, France

⁵INRA, UMR BGPI, Bâtiment K, Campus International de Baillarguet, F-34398 Montpellier, France; CIRAD, F-34398, Montpellier, France

⁶Department of Life Sciences, Imperial College London, London, SW7 2AZ, United Kingdom

Corresponding author: Michael Hood: mhood@amherst.edu, +1 413 542 8538

* The authors contributed equally to the manuscript.

Keywords: admixture, disease prevalence, *Microbotryum lychnidis-dioicae*, multiple infections, nunatak, selfing

Running title: Plant parasite with arctic-alpine distribution

This article has been accepted for publication and undergone full peer review but has not been through the copyediting, typesetting, pagination and proofreading process, which may lead to differences between this version and the Version of Record. Please cite this article as doi: 10.1111/mec.13512

This article is protected by copyright. All rights reserved.

Summary

Cold-adapted organisms with current arctic-alpine distributions have persisted during the last glaciation in multiple ice-free refugia, leaving footprints in their population structure that contrast with temperate plants and animals. However, pathogens that live within hosts having arctic-alpine distributions have been little studied. Here, we therefore investigated the geographical range and population structure of a fungus parasitizing an arctic-alpine plant. A total of 1437 herbarium specimens of the plant *Silene acaulis* were examined, and the anther smut pathogen *Microbotryum silenes-acaulis* was present throughout the host's geographic range. There was significantly greater incidence of anther smut disease in more northern latitudes and where the host locations were less dense, indicating a major influence of environmental factors and/or host demographic structure on the pathogen distribution. Genetic analyses with seven microsatellite markers on recent collections of 195 *M. silenes-acaulis* individuals revealed three main genetic clusters, in North America, northern Europe and southern Europe, likely corresponding to differentiation in distinct refugia during the last glaciation. The lower genetic diversity in northern Europe indicates postglacial recolonization northwards from southern refugia. This study combining herbarium surveys and population genetics thus uniquely reveals the effects of climate and environmental factors on a plant pathogen species with an arctic-alpine distribution.

This article is protected by copyright. All rights reserved.

INTRODUCTION

The geographic distribution and genetic structure of present-day species result both from dispersal ability and from historical processes such as continental drift and climate changes ([Hewitt 1996](#)), as changes in sea level and extensions of ice sheets have affected the availability and connectivity of species' habitats ([Andersen & Borns 1997](#); [Ehlers & Gibbard 2007](#)). In particular, studies using molecular markers have revealed that the genetic structure of present-day species has been strongly influenced by the oscillations in temperature of the Quaternary ([Hewitt 2004](#)).

During glacial periods of the Pleistocene, cold-sensitive species persisted in ice-free "refugia" in southern regions. Long-term isolation of populations in separate refugia fostered population differentiation ([Bennett *et al.* 1991](#); [Hewitt 1996, 2004](#)). Increasing temperatures and decline of ice sheets during interglacial periods enabled range expansions and migration northwards ([Comes & Kadereit 1998](#); [Abbott & Brochmann 2003](#)). Expansions as part of these recolonization processes were often associated with founder effects, resulting in low levels of genetic diversity in northern regions, while southern regions remained reservoirs of genetic diversity ([Hewitt 2004](#)). In contrast, cold-adapted species were able to survive glacial maxima in more northern areas, at the edge of the ice-sheets, and also in mountains of southern areas ([Murray 1995](#); [Abbott *et al.* 2000](#); [Brochmann *et al.* 2003](#)). Molecular studies have supported the existence of additional, smaller refugia in northern Europe and North America, *e.g.*, in "nunataks", that were mountains completely surrounded by glacial ice (*e.g.* [Stehlik *et al.* 2002](#); [Westergaard *et al.* 2011](#)), from which species dispersed when the climate became warmer. The range of arctic-alpine species was thus also fragmented during the ice age, which left footprints

This article is protected by copyright. All rights reserved.

as strong genetic population structures (Eidesen *et al.* 2013). Unlike species adapted to temperate climates however, the postglacial recolonization of many cold-adapted species was likely broad-fronted, with admixtures between different genetic pools, and therefore with little loss of overall genetic variation (Brochmann & Brysting 2008).

Recent studies on arctic-alpine species have shown that, beside the impact of post-glacial migration, the genetic structure of present day species varies greatly depending on species-specific factors, *e.g.*, dispersal ability and mating system (Taberlet *et al.* 1998; Abbott & Brochmann 2003; Stewart *et al.* 2010). In pathogenic organisms, population structure may depend in addition on the distribution of the host (Nieberding *et al.* 2008). Although a wealth of studies on the genetic diversity of arctic-alpine organisms has been accumulated, they virtually all focus on plant and animal taxa, leaving a striking lack of knowledge in other groups. For instance, only few studies have focused on fungal pathogens or fungi in symbiosis, *e.g.*, mycorrhizae (Cripps & Eddington 2005); yet such research is important if we are to understand the effects of climate change on disease emergence and spread and broader issues of impact from warming temperatures on biodiversity.

We therefore studied here the population structure of the arctic-alpine distributed pathogen *Microbotryum silenes-acaulis* for understanding its population history in relation to climate changes during and after the last glaciation. This specialized basidiomycete fungal pathogen, *M. silenes-acaulis*, is found on the plant *Silene acaulis* (Lutz *et al.* 2008), which occurs in arctic-alpine environments in the northern hemisphere (Körner 2003). *Silene acaulis* forms large, long-lived cushions with hundreds of short stems (Jones & Richards 1962). A well-studied relative of *M. silenes-acaulis*, *Microbotryum lychnidis-dioicae*, causes anther smut on the temperate host *Silene latifolia*, and comparable population genetics studies indicate a clear pattern of

This article is protected by copyright. All rights reserved.

recolonization from southern European refugia (Spain, Italy, Balkans) after the last glaciation (Vercken *et al.* 2010). The *M. lychnidis-dioicae* recolonization history is mostly congruent with that of *Silene latifolia* (Taylor & Keller 2007), although that pathogen seemed to have persisted in more numerous and smaller refugia than its host (Vercken *et al.* 2010; Gladieux *et al.* 2011). Infections by multiple pathogen genotypes have been reported in *M. lychnidis-dioicae* and can have important consequences on disease dynamics (Lopez-Villavicencio *et al.* 2007, 2011; Buono *et al.* 2014; Susi & Laine 2015).

To investigate the phylogeography of *M. silenes-acaulis* in relation to its host distribution, we used a combination of herbarium surveys and population genetic analyses using microsatellite markers. Our specific questions were the following: 1) What is the distribution of *M. silenes-acaulis* as compared to its host plant *S. acaulis*? 2) What is the population structure of *M. silenes-acaulis* across its geographical range, and does it allow retracing migration histories in relation to glacial cycles? 3) What is the spatial distribution of the genetic variation at finer scales, including whether infections by multiple pathogen genotypes occur in the same *S. acaulis* individuals?

MATERIAL AND METHODS

Herbarium surveys for assessing species distribution

To study the distribution of *M. silenes-acaulis* and its host *S. acaulis*, a total of 1437 herbarium specimens of *S. acaulis* were examined. Several previous studies have shown that anther-smut fungi can be detected among herbarium specimens of its hosts; because there is little evidence

This article is protected by copyright. All rights reserved.

that the original collectors or subsequent annotator recognized the plants as being diseased (Rabeler 1993; Antonovics *et al.* 2003; Hood *et al.* 2010), this allows assessment of the pathogen distribution as well. Specimens of *S. acaulis* were examined in the general collections from the following herbaria: U.S. Forest Service Herbarium (USFS), New York Botanical Garden (NY), Museum National d'Histoire Naturelle (P), Oregon State University (OSC), University of California, Berkeley (UC), University of Iowa and Iowa State University (ISC), University of Minnesota (MIN), University Washington (WTU), Washington State University (WS), British Museum of Natural History (BM). The location and date of collection for healthy and diseased specimens were recorded.

The distributions of healthy and diseased specimens were compared to the previously published *S. acaulis* map by Hultén and Fries (1986). Disease incidence among herbarium specimens was analysed in the context of collection site latitude and density of nearby collection sites. The effects of latitude were analysed by separating the samples into equal sized groups based on quartiles from southern to northern latitudes; quartile latitude boundaries of <44, 49, 62, and the maximum observed site of 82. For defining local densities, latitude and longitude information were translated into pairwise linear distances between sites. The number of collection sites near diseased sites (within radii of 50, 100, or 200 km) was compared to an equal number (N = 36) of randomly selected healthy collection sites. One thousand randomly assembled sets of 36 healthy collection sites were used to assess statistical significance of differences between average densities of collection sites near to diseased and healthy localities. Latitude and disease status, and their interaction term, were analysed for the response variable of density of host collection sites using the generalized linear model approach with Poisson log link function in SPSS

This article is protected by copyright. All rights reserved.

STATISTICS 19 (SPSS, Inc, Chicago, Illinois); this analysis included the disease sites and an equal number of randomly selected healthy sites.

Sample collection of *M. silenes-acaulis* in living populations for population genetic analyses

The analyses of *M. silenes-acaulis* population structure were performed on a sample of individuals collected from natural, living populations across its range (Fig. 1, Table S1) from 2001 to 2013. Diploid teliospores from host plants within an area of 2 km² were considered as a geographic population and spores from a given flower were treated as a single diploid individual (Lopez-Villavicencio *et al.* 2007).

Genotyping populations of the global dataset

DNAs from all 255 sampled individuals (from populations in North America, Iceland, southern and northern Europe, including Norway and Svalbard), hereafter called the global dataset, were extracted using chelex (Giraud *et al.* 2004) and genotyped using 16 microsatellite markers previously available (Table S2) (Bucheli *et al.* 1998; Giraud *et al.* 2002; Giraud *et al.* 2008).

Only individuals with genotype data for more than 70 % of the markers were retained for analyses, which represented 195 individuals from 39 populations.

Development of microsatellite markers and genotyping populations of the northern-

European dataset

Because of higher sampling density in Norway and Svalbard, we also analyzed these populations separately, and with markers specifically developed from local genotypes, to increase the power of the population structure analyses in these regions.

This article is protected by copyright. All rights reserved.

For this goal, spores from 137 flowers were germinated on Maltose-Yeast-Peptide medium (MYP) with kanamycin (100 µg/ml) for six days at room temperature and DNA from cultures was extracted by the method of Hoffman & Winston (1987). The genome of a *M. silenes-acaulis* strain (CE008) from Norway (Jotunheimen, population 16) was sequenced (3X coverage) on a Roche GS FLX+I using the 454 sequencing method (GATC-Biotech, Konstanz, Germany). The program MIRA 3.4.0.1 (Chevreux *et al.* 1999) was used to assemble single reads into contigs. Only contigs larger than 3 kb were retained for the subsequent detection of microsatellites using PHOBOS 3.3.12 (Mayer 2010). We retained microsatellite loci only when: 1) their repeat motif length was between two and nine bp, which is typically considered as the optimal length range for obtaining variable and scorable markers, 2) they had a minimum length of 20 bp and/or at least four repeats, for increasing the probability that the loci would be polymorphic, and 3) they were perfect repeats of the motif, for decreasing the probability of wrong allele scoring and for maximizing the probability of polymorphism (Leese & Held 2011).

Primer binding sites were chosen so that the amplified fragment would range between 100 and 350 bp (Table S3). Primer pairs were designed using PRIMER3 0.4.0 (Rozen & Skaletsky 2000) and prepared by *Sigma-Aldrich Life Science* (Taufkirchen, Germany). Variation for the designed microsatellite markers was tested by genotyping four specimens from four distinct regions, respectively: Alps, Norway, Svalbard and Alaska. To reduce the occurrence of stutter bands in fragment analyses, the final elongation time in the PCRs was set to 30 minutes (Leese & Held 2011). Markers with multiple amplified fragments were not retained for further genotyping.

After testing different microsatellite combinations using gel electrophoresis, we pooled two markers at most using multiplex PCR, with different fragment lengths and adding the fluorescent markers 5-Carboxytetramethyl-rhodamine (TAMRA™), 5-Tetrachloro-Fluorescein (TET™) and

This article is protected by copyright. All rights reserved.

6-Fluorescein-phosphoramidite (6-FAMTM) (*Sigma-Aldrich Life Science*) to the 5'-end forward primers. Fragment analysis was performed on an ABI3130xl sequencer (*Applied Biosystems*), using the standard ladder GeneScan- 500 ROXTM.

After genotyping northern European populations with these markers, we checked for large allele drop out using MICROCHECKER 2.2.3 (Van Oosterhout *et al.* 2004) and removed loci displaying extremely large among-population variance using ANIMALFARM 1.0 (Landry *et al.* 2002). The program LOSITAN 1.0 (Beaumont & Nichols 1996) was used to detect markers evolving under positive selection, and GENEPOP 4.1 (Rousset 2008) was used to detect markers in linkage disequilibrium, which were then excluded from further analyses. We eventually retained seven of the newly developed markers for the population structure analysis of Norway and Svalbard populations (Table S3). Finally, we retained 110 individuals from 18 populations with no more than 30 % missing data.

Investigation of the occurrence of multiple infections

To investigate the occurrence of multiple infections in *S. acaulis*, we genotyped spores from three to five different stems per diseased host plant in four of the populations from southern Europe (Table S1). This subset represented 64 flowers from 16 plants, genotyped with the 16 microsatellite markers used for the global dataset.

Genetic diversity

For the global dataset, the degree of genetic variability within the geographic groups North America, southern Europe and northern Europe was assessed by allelic richness (A_r) (Petit *et al.*

This article is protected by copyright. All rights reserved.

1998), unbiased expected heterozygosity (H_E), observed heterozygosity (H_O), and Nei's standardized fixation index (G'_{ST}) (Nei 1987; Meirmans & Hedrick 2011). The R package "hierfstat" (Goudet 2014) was used to estimate A_r , and GENALEX 6.5 (Peakall & Smouse 2005) to estimate H_E , H_O , and G'_{ST} . The significance of the heterozygosity deficit compared to the expected heterozygosity under Hardy-Weinberg assumptions was tested in GENEPOP 4.2 (Rousset 2008) and G_{IS} coefficient was estimated with the correction of Nei and Chesser (1983) using GENALEX 6.5 (Peakall & Smouse 2005). Differences in genetic diversity (H_E , A_r) between geographic groups were tested using paired Wilcoxon signed rank tests. The relationship between the level of multiple infections and population genetic diversity was assessed by testing the significance of the correlation between the number of genotypes detected per plant and population diversity (H_E , A_r) using the Spearman's rank coefficient. All statistical tests were performed using RSTUDIO 3.0.2 (RStudio Team 2015).

Population structure

Population genetic structures were investigated with the Bayesian assignment method implemented in STRUCTURE 2.3 (Pritchard *et al.* 2000) using the diploid datasets. Ten independent runs were performed for each value of K (number of clusters), with K ranging from one to 20. We used 500,000 iterations after a burn-in period of 100,000. STRUCTURE outputs were processed using STRUCTURE HARVESTER (Earl & von Holdt 2012). CLUMPP 1.1.2 (Jakobsson & Rosenberg 2007) was used to align independent runs with the same clustering mode, with random input order, 10,000 permutations, and the Greedy algorithm for $K \leq 9$ and the Large-Greedy algorithm for $K > 9$. Barplots with cluster-membership coefficients for all individuals and geographic populations were generated with the program DISTRUCT 1.1

This article is protected by copyright. All rights reserved.

(Rosenberg 2003). The geographic distributions of genetic clusters were visualized using R package “RgoogleMaps”(Loecher 2015). Genetic diversity and selfing rates in genetic populations were estimated using GENALEX 6.5 (Peakall & Smouse 2005) and INSTRUCT (Gao *et al.* 2007), respectively. F_{ST} values among genetic clusters were calculated at $K = 3$ to $K = 8$ and visualized with neighbour-joining trees using the R package “ape” (Paradis *et al.* 2015). In addition to these model-based methods, we performed a principal component analysis (PCA) to visualize genetic patterns without any assumption on panmixia (R packages “vegan” (Oksanen *et al.* 2015), “rgl” (Adler *et al.* 2015) and “scatterplot3d” (Ligges *et al.* 2015). For each value of K from two to ten, individuals were assigned to a cluster if their membership coefficient in this cluster was higher than 0.7.

RESULTS

Distribution and demographic data

Herbarium specimens of *S. acaulis* were examined from throughout the species range and largely conformed to the species map provided by Hultén and Fries (1986) (Fig. 1), *i.e.*, an alpine/circum-polar distribution, including more southern extensions in mountain ranges, such as the Rocky Mountains, and a gap in the northern Eurasia regions of the Sakha Republic.

A total of 1,437 herbarium specimens were examined, including 41 (2.9%) that were found to be affected by the anther-smut disease. Peak collection period of the plant *S. acaulis* was in the 1930s, consistent with previous studies on other plant species (Antonovics *et al.* 2003). There was no significant difference in the distribution of collection times (years) between diseased and

This article is protected by copyright. All rights reserved.

Version postprint

healthy samples (Kolmogorov-Smirnov two sample test, p -value = 0.545), indicating no recent change in disease incidence. As previously observed for other *Silene* herbarium specimens (Antonovics *et al.* 2003), there was no indication that collectors had been aware of the disease status of the plants and would have biased collection towards healthy or diseased plants. In particular, no written mention of diseased was recorded on herbarium sheets. Excluding specimens with illegible or ambiguous locality information, 790 distinct collection localities were identified, including 36 with anther smut infection.

Anther-smut disease was found to be widespread within the host's geographic range, with no major region being free of infections. However, the distribution of anther smut disease showed significant patterns among the collection sites in two ways. First, the disease tended to be found more often in regions with low densities of *S. acaulis* collection sites (Fig. 2); none of the 1,000 randomly sampled sets of healthy sites had average densities of nearby sites, in radii at 50, 100 or 200 km, as low as that observed for the set of diseased sites (p -value < 0.001). Second, the proportion of sites that contained diseased plants increased in more northern regions (Fig. 3).

This pattern of greater disease incidence in the northern latitudes was despite the occurrence of greater numbers of samples per site in more southern localities (1.7 samples/site for each of the two southern latitudinal quartiles, and 1.4 and 1.3 samples/site for the two more northern quartiles, respectively).

While host collection site density had a strong latitudinal component (Fig. 3), the number of nearby collection sites was significantly determined by disease status independently of the effect of latitude, with disease being found in areas of lower host site density. The number of nearby sites within a radius of 100km was indeed predicted from the generalized linear model by

This article is protected by copyright. All rights reserved.

latitude (Wald $X^2 = 113.32$, p-value < 0.001) and disease status (Wald $X^2 = 5.66$, p-value = 0.017), while the interaction term was non-significant (Wald $X^2 = 0.43$, p-value = 0.514).

Genetic variation in populations and within individual host plants

We detected 99 different alleles overall across the 16 microsatellite markers used on the global dataset, including *M. silenes-acaulis* samples from 195 different plants across 42 populations.

Typically, three to nine alleles per locus were observed, except for the E18 marker, which displayed 24 alleles (Table S2). For all markers, observed heterozygosity (H_O) showed significantly lower values than the expected heterozygosity (H_E) ($p < 0.001$); this tendency of heterozygote deficiency was also indicated by positive and high G_{IS} values (Table 1, Table S2).

Expected heterozygosity (H_E) and allelic richness (A_r) were highest in southern European populations ($H_E = 0.45$, $A_r = 4.89$), lowest in northern European populations ($H_E = 0.18$, $A_r = 2.65$) and intermediate in North America ($H_E = 0.35$, $A_r = 3.76$) (Table 1). Paired Wilcoxon signed rank tests indicated significant differences between southern Europe and northern Europe (H_E : $W = 4$, p-value < 0.001, A_r : $W = 136$, p-value = 0.031) and between North America and northern Europe (H_E : $W = 4$, p-value = 0.009; A_r : $W = 129$, p-value < 0.001), while the values of southern Europe and North America were significantly different only for A_r (H_E : $W = 81$, p-value = 0.244, A_r : $W = 118$, p-value = 0.008).

Multiple infections were detected in the 16 plants from populations in the Alps for which spores from multiple stems had been genotyped (mean number of stems analyzed = 4). A mean of 3.25 genotypes were detected per plant, *i.e.*, nearly every stem analyzed bore a specific genotype.

There was no significant correlation between the average number of genotypes per individual

This article is protected by copyright. All rights reserved.

and genetic diversity (H_E and A_r) of a population (H_E : $r = 0.80$, p -value = 0.333; A_r : $r = 0.63$, p -value = 0.368).

Population structure

We first used the Bayesian methods implemented in the STRUCTURE software to investigate the population structure in the global dataset. There was a constant increase of the likelihood $\ln(\text{Pr}(X|K))$ for the number of clusters (K) ranging from two to 20 clusters; nevertheless, after $K = 8$ the rate of increase in probability became markedly smaller. In addition, the barplots showed that for $K > 8$ each new cluster appeared completely admixed and therefore did not correspond to a genuine population structure. Together this indicated that $K = 8$ was the finest genetic structure we could detect with our dataset.

At $K = 3$, a clear separation was observed between North America, northern Europe and southern Europe. Populations from North America, Norway and the Pyrenees were mostly assigned to a single cluster each (blue, yellow and green clusters, respectively), while individuals from the Alps were assigned to either one of these three clusters (Figs. 4 and 5).

At $K = 8$ the North American populations were mainly assigned to two clusters (blue and orange) (Figs. 4 and 5). The blue cluster was exclusively found in North America, and mostly in Colorado, while the orange cluster occurred mostly in Alaska but also in the Alps. In Norway, two clusters were found (yellow and brown), scattered across all Norwegian regions. Samples from central Alps were mainly assigned to three clusters (red, orange and violet), also with some individuals from the western Alps. Individuals from southern Alps were assigned to two clusters, one being restricted to this area (light green), while the other cluster could be also found in Iceland and Pyrenees (dark green). Pyrenees and Iceland populations were highly admixed, with

This article is protected by copyright. All rights reserved.

substantial membership proportions in northern and southern European populations.

INSTRUCT, which jointly estimates selfing rates and population structure, inferred a similar population structure as the STRUCTURE software. For $K = 5$, i.e., the highest K -value for which cluster assignment was clear, the lowest selfing rates were found in the dark green cluster (0.37), in the southern Alps, while the highest selfing rate was inferred in the red cluster (0.67), in central Alps. Allelic richness (A_r) was lowest in the Norway yellow cluster ($A_r = 1.69$) and highest in the dark green cluster in the southern Alps ($A_r = 3.51$) (Table 2).

PCA analyses displayed patterns largely consistent with the Bayesian clustering (Fig. S2). PCA and pairwise F_{ST} values (Table 3; Figs. 5 and S2) further revealed a close relationship between the two clusters identified in Norway/Svalbard, which also appeared genetically close to the red cluster in central Alps. The blue cluster, which occurred mostly in the North American populations, appeared genetically the most distant.

Genetic structure of Norway/Svalbard populations

For the populations from Norway and Svalbard, the set of the seven new microsatellite markers showed similar levels of genetic variability of *M. silenes-acaulis* as the previously developed markers. The average number of alleles per population indeed ranged from 1.6 to 2.14 across the 110 individuals collected in the 18 populations from Norway and Svalbard populations.

Observed heterozygosity (H_o) was lower than expected heterozygosity (H_E) for all seven loci, and the tendency of homozygosity excess was also indicated by high G_{IS} values, with an average of 0.65 (Table 1, Table S2).

STRUCTURE results displayed an increase of the likelihood $\ln(\text{Pr}(X|K))$ for increasing K up to $K = 9$, but the increase became smaller above $K = 4$. The Evanno-method thus indicated that the

This article is protected by copyright. All rights reserved.

subdivision in four genetic clusters was the strongest structure (Fig. S1). Results of the structure analysis supported the existence of four genetic clusters, that were however not strongly associated with geographical regions (Figs. S3 and S4). Each cluster was indeed present in all regions, although the yellow cluster was mainly restricted to Svalbard populations (Figs. S3 and S4). This cluster appeared to be the most genetically distant based on F_{ST} values (Table S4; Fig. S4). The selfing rates inferred by INSTRUCT varied from 0.72 to 0.81 for the four genetic clusters (Table 4).

DISCUSSION

The present study combined herbarium surveys and population genetics for understanding the effects of climate and environmental factors on the distribution and population subdivision a plant pathogen species with an arctic-alpine distribution.

Distribution of *Silene acaulis* and anther-smut disease

Herbarium surveys allowed mapping the distribution of the plant *S. acaulis* and of its anther smut pathogen *M. silenes-acaulis* at a broad geographic scale. The geographical range inferred for *S. acaulis* was largely in agreement with the herbarium and records-based species map provided by Hultén and Fries (1986). This supports the utility of herbarium collections as resources for estimating worldwide species ranges, including for fungal pathogens preserved with their hosts (Antonovics *et al.* 2003; Hood *et al.* 2010). The absence of notes about anther-smut disease on specimens in herbarium surveys further confirmed that collectors do not appear to detect infections on the plants, which has been also shown by other studies (Hood & Antonovics 2003),

This article is protected by copyright. All rights reserved.

suggesting that collection bias has likely been minimal. Thus, herbaria surveys are useful for inferring disease range and rates of disease in nature (Antonovics *et al.* 2003).

Anther-smut pathogen was found throughout the geographic range of *S. acaulis* with an incidence of 2.9%, which is twice the average rate compared to other *Silene* hosts of anther smuts estimated from broader herbarium surveys (Hood *et al.* 2010). Part of the explanation for the high levels of disease on *S. acaulis* may come from the very long-lived nature of the plants (several hundred years; Forbis & Doak 2004) in combination with a systemic infection from which *S. acaulis* typically rarely recovers (Marr *et al.* 2005). Using a model that incorporates dynamics of anther smut transmission, Bruns *et al.* (2015) recently showed that host longevity is associated with higher equilibrium disease prevalence (*i.e.*, proportion of host individuals that are diseased within populations), which would result in the disease being more likely to be sampled when herbarium materials are collected.

In addition, there was significantly greater incidence of anther-smut disease in more northern latitudes and where the host locations were less dense, indicating an influence of environmental factors and/or host demographic structure on the pathogen distribution. While there is a possibility that far northern regions have lower densities of collection sites because of biases in sampling efforts, previous herbarium surveys have suggested the importance of host demography on disease prevalence, where the disease was more common in host species exhibiting higher levels of localized endemicity (Hood *et al.* 2010) or in more isolated localities (Antonovics *et al.* 2003). A negative effect of host site density on anther smut incidence may appear surprising, as higher host density is usually thought to promote sustainability of pathogen populations (Anderson & May 1979). However, field studies of *Microbotryum* on the plant *Viscaria alpina* also found higher disease prevalence in regions of more rarefied host populations (Carlsson-

This article is protected by copyright. All rights reserved.

Granér & Thrall 2006; Carlsson-Granér *et al.* 2014). This was explained by lower population connectedness preventing the maintenance and selection for resistant host genotypes. In *S. acaulis*, additional losses of resistant alleles might have occurred due to founder effects during northward recolonization after the last glaciation. Resistance is indeed known to display extensive genetic variation within *Silene* hosts (Biere & Honders 1996; Cafuir *et al.* 2007) while infection ability varies little within *Microbotryum* species (Kaltz *et al.* 1999); it would therefore be expected that founder effects in northern areas would have less of an impact on infection ability in the pathogen than on resistance within the host. In addition to these possible influences on resistance polymorphisms, climatic effects of latitude may play a direct role in determining anther smut distributions, through a sensitivity of the pathogen to warmer conditions.

Microbotryum as a genus tends to exhibit an association between high frequencies of disease and mountainous regions (Hood *et al.* 2010), and it has been assumed that, like many fungal diseases, it is favored by cooler temperatures. The recent study by Abbate and Antonovics (2014) actually demonstrated that *Microbotryum* species affecting *S. vulgaris* were more likely to be found in host populations where overall temperatures were lower.

Population structure of *M. silenes-acaulis* in comparison to other non-arctic-alpine species

The genetic diversity of *M. silenes-acaulis* was low overall compared to other *Microbotryum* species, such as *M. lychnidis-dioicae* and *M. silenes-dioicae* (Vercken *et al.* 2010). This could be due to *M. silenes-acaulis* having a relatively small effective population size, due to a high degree of endemism for arctic and alpine environments. In comparison, population size and connectedness in the widespread *Silene* hosts *S. latifolia* and *S. dioica* have much more generalist

This article is protected by copyright. All rights reserved.

habitats that may facilitate the exchange and maintenance of allelic diversity in their anther smuts.

Additional host-specific features of *S. acaulis* may also be expected to affect pathogen genetic diversity within host populations and even within individual host plants through multiple infections, as is known to occur in *M. lychnidis-dioicae* (Hood 2003; Lopez-Villavicencio *et al.* 2007). In particular, this study shows that for some samples from the Alps most stems within a given plant carry different *M. silenes-acaulis* genotypes. The long lifespan and the high number of stems of the host plant in particular are expected to favor the occurrence of multiple infections, as it increases the probability that different genotypes are deposited on a given host individual plant and that different genotypes occupy different stems. Marr & Delph (2005) estimated that their particular *S. acaulis* population under-study could have persisted for approximately 2000 years based on past geological data, and *S. acaulis* cushions can bear a multitude of perennial stems (Jones & Richards 1962).

Our results suggested a predominantly selfing mating system in *M. silenes-acaulis*. Although selfing is typical of *Microbotryum* species (Giraud *et al.* 2008), estimated selfing rates were not as severe as previously observed in *M. lychnidis-dioicae* and *M. silenes-dioicae*, for example (Vercken *et al.* 2010; Gladieux *et al.* 2011). Opportunities to encounter a mating partner for outcrossing may be higher in *M. silenes-acaulis* than in other *Microbotryum* species due to the long life span, high number of stems per plant, persistence of host populations, and low disease recovery rates that characterize *S. acaulis* (Marr & Delph 2005). Alternatively, arctic alpine environment and long generation time (Bruns *et al.* 2015) may affect mating system and outcrossing rates in fungal systems in a similar way as described for plants. In plants, arctic-alpine environments have been suggested to increase selfing rates due to inadequate pollinator services

This article is protected by copyright. All rights reserved.

in harsh environments, stress-induced increase in levels of self-compatibility and a paucity of self-incompatibility alleles within smaller populations (Karron *et al.* 2012; Levin *et al.* 2012).

Genetic subdivision and migration in *M. silenes-acaulis*

Long-standing physical barriers (*e.g.* oceans or mountains) are known to limit dispersal and induce differentiation of populations (Abbott & Brochmann 2003; Eidesen *et al.* 2013). Our results revealed strong differentiation in *M. silenes-acaulis* between populations from North America and Europe, as previously reported in other arctic-alpine distributed species (Abbott *et al.* 2003; Alsos *et al.* 2007; Westergaard *et al.* 2011). Genetic footprints of long-distance dispersal were nevertheless detected, as North American individuals assigned to European clusters. This feature is shared with several arctic-alpine plant species, for which genetic data have provided ample evidence for extreme colonization abilities, in many cases despite the lack of obvious adaptations to long-distance dispersal (Brochmann & Brysting 2008). It remains speculation whether this is human-mediated by importing plants as ornamentals (*e.g.*, Farr *et al.* 1989) or if long-distance dispersal of seeds of *S. acaulis* occurs more regular *e.g.* by seed transfer in feathers of birds (*e.g.*, Lira-Noriega *et al.* 2015).

The biological features of *Microbotryum* concerning long-distance dispersal similarly raise questions, because they are obligate, specialized pathogens that are neither transmitted by the seeds nor persistent as contaminants of the environment (Begerow *et al.* 2014). However, the case of the temperate species *M. lychnidis-dioicae* – that was introduced in North America – shows that even a vector-borne pathogen can successfully invade a new continent multiple times independently (Fontaine *et al.* 2013; Gladieux *et al.* 2015).

Moreover the present study revealed a clear genetic differentiation between southern and

This article is protected by copyright. All rights reserved.

northern European populations, similar to the population structure of its host *S. acaulis* (Mikhailova *et al.* 2010). During the last glaciation, conditions in central Europe were not suitable even for cold-adapted organisms, so that populations have remained separated for long in distinct refugia, which has fostered population differentiation. Multiple previous studies have similarly revealed footprints of distinct glacial refugia in Europe (Hewitt 1996, 2004), including in arctic-alpine plants (Abbott & Brochmann 2003; Eidesen *et al.* 2013). Only few studies have investigated population genetic structures at large scales in natural plant pathogens (*i.e.*, non-crop disease), and some of them have found subdivision between continents, *e.g.*, in *Melampsora larici-populina* (Barrès *et al.* 2008).

The differentiation in southern Europe of several distinct genepools in separated refugia also explains the highest levels of genetic variation in *M. silenes-acaulis* in southern Europe. Post-glacial migration from several peripheral refugia or even “nunataks” would then have resulted in the observed co-occurrence of several clusters within small areas as well as admixture (Schönswetter *et al.* 2006). High genetic diversity and cluster richness in southern Europe are features shared with several other arctic-alpine species *i.e.* *Arabis alpina* (Koch *et al.* 2006) and *Ranunculus glacialis* (Schönswetter *et al.* 2003).

The lower genetic diversity and the occurrence of distinct clusters in the more northern populations of *M. silenes-acaulis* in Europe would result from demographic bottlenecks following recolonization from more southern refugia. This is supported by the northern clusters being derived from clusters occurring in southern Europe in the NJ trees. Similar patterns have been observed for the host species *S. acaulis* (Abbott 1995; Mikhaylova *et al.* 2010) and other organisms (Abbott & Brochmann 2003).

This article is protected by copyright. All rights reserved.

CONCLUSION

This study combined surveys of natural history collections and population genetics to infer the global biogeography of a fungal pathogen with arctic-alpine distribution. The pathogen appears to have a nearly ubiquitous presence in regions occupied by the hosts *S. acaulis*. The significantly greater incidence of the pathogen in more northern and more rarefied host locations reveals a major within-species variation in disease risk that has been rarely observed in non-agricultural or domesticated systems. This may be due to lower genetic variation for resistance in northern regions due to post-glacial recolonization and a paucity of host population connectedness. We additionally found evidence for strong population structure within *M. silenes-acaulis*, suggesting persistence in distinct glacial refugia, followed by recolonization from multiple differentiated populations and recent migration events. These overall patterns are consistent with those reported in the host *S. acaulis* (Abbott 1995; Mikhaylova *et al.* 2010). This supports the very close and long-term association of the obligate and specialized pathogen on a very long-lived herbaceous host throughout integrated processes of recolonization after the last glaciation.

ACKNOWLEDGMENTS

TG acknowledges the grant ANR-13-BSV7-0008. MEH acknowledges the National Science Foundation award DEB- 1115765. We thank the INRA Research Unit Génétique, Diversité et Ecophysiologie des Céréales (UMR1095), Gentyane platform (Clermont-Ferrand, France) for part of the microsatellite genotyping. This research was also supported by the German Science Foundation (SCHA 1723/1-1) and a grant from the DAAD program “Promos” (German

This article is protected by copyright. All rights reserved.

Academic Exchange Service). We thank Erin Chung, Janis Antonovics and Mary Gibby for assistance with herbarium surveys and Oliver Röhl, Sascha Lotze-Engelhard and Bill Morris, for collecting and providing samples.

REFERENCES

- Abbate JL, Antonovics J (2014) Elevational disease distribution in a natural plant-pathogen system: insights from changes across host populations and climate. *Oikos*, **123**, 1126–1136.
- Abbott RJ (2000) Molecular analysis of plant migration and refugia in the Arctic. *Science*, **289**, 1343–1346.
- Abbott RJ, Brochmann C (2003) History and evolution of the arctic flora: in the footsteps of Eric Hultén. *Molecular Ecology*, **12**, 299–313.
- Abbott RJ, Chapman HM, Crawford RMM, Forbes DG (1995) Molecular diversity and derivations of populations of *Silene acaulis* and *Saxifraga oppositifolia* from the high Arctic and more southerly latitudes. *Molecular Ecology*, **4**, 199–208.
- Adler D, Murdoch M, and others (2014). rgl: 3D visualization device system (OpenGL). R package version 0.93.1098. Available from <http://CRAN.R-project.org/package=rgl>.
- Alsos IG, Eidesen PB, Ehrich D, Skrede I, Westergaard K, Jacobsen GH, Landvik JY, Taberlet P, Brochmann C (2007) Frequent long-distance plant colonization in the changing Arctic. *Science*, **316**, 1606–1609.
- Andersen GB, Borns HW (1994) The ice age world: an introduction to quaternary history and research with emphasis on North America and Northern Europe during the last 2.5 million years. Oslo: Scandinavian Univ. Press.
- Anderson RM, May RM (1979) Population biology of infectious diseases: Part I. *Nature* **280**: 361–367.
- Antonovics J, Hood ME, Thrall PH, Abrams JY, Duthie GM (2003) Herbarium studies on the distribution of anther-smut fungus (*Microbotryum violaceum*) and *Silene* species (Caryophyllaceae) in the eastern United States. *American Journal of Botany*, **90**, 1522–1531.
- Barrès B, Halkett F, Dutech C, Andrieux A, Pinon J, Frey P (2008) Genetic structure of the poplar rust fungus *Melampsora larici-populina*: Evidence for isolation by distance in Europe and recent founder effects overseas. *Infection, Genetics and Evolution*, **8**, 577–587.
- Beaumont MA, Nichols RA (1996) Evaluating loci for use in the genetic analysis of population structure. *Proceedings of the Royal Society B: Biological Sciences*, **263**, 1619–1626.
- Begerow D, Göker M, Lutz M, Stoll M (2004) On the evolution of smut fungi on their host. *Frontiers in Basidiomycote Mycology*. Agerer, Piepenbring, Blanz.
- Begerow D, Schäfer AM, Kellner R, Yurkov A, Kemler M, Oberwinkler F, Bauer R (2014) *Ustilaginomycotina*. In: McLaughlin DJ, Spatafora JW (eds) *The Mycota*. 7. Part A. Systematics and evolution, 2nd edn. Springer.
- Bennett KD, Tzedakis PC, Willis KJ (1991) Quaternary refugia of north European trees. *Journal of Biogeography*, **18**, 103.
- Biere A, Honders S (1996) Host adaptation in the anther smut fungus *Ustilago violacea*

This article is protected by copyright. All rights reserved.

(*Microbotryum violaceum*): infection success, spore production and alteration of floral traits on two host species and their F1-hybrid. *Oecologia*, **107**, 307–320.

Brochmann C, Brysting AK (2008) The Arctic – an evolutionary freezer? *Plant Ecology & Diversity*, **1**, 181–195.

Brochmann C, Gabrielsen TM, Nordal I, Landvik JY, Elven R (2003) Glacial survival or tabula rasa? The history of North Atlantic biota revisited. *Taxon*, **52**, 417.

Bruns E, Hood ME, Antonovics J (2015) Rate of resistance evolution and polymorphism in long- and short-lived hosts: Brief communication. *Evolution*, **69**, 551–560.

Bucheli E, Gautschi B, Shykoff JA (1998) Isolation and characterization of microsatellite loci in the anther smut fungus *Microbotryum violaceum*. *Molecular Ecology*, **7**, 665–666.

Buono L, López-Villavicencio M, Shykoff JA, Snirc A, Giraud T (2014) Influence of multiple infection and relatedness on virulence: Disease dynamics in an experimental plant population and its castrating parasite. *PLoS ONE*, **9**, e98526.

Cafuir L, Antonovics J, Hood ME (2007) Tissue culture and quantification of individual level resistance to anther smut disease in *Silene vulgaris*. *International Journal of Plant Sciences*, **168**, 415–419.

Carlsson-Granér U, Giles BE, Thrall PH (2014) Patterns of disease and host resistance in spatially structured systems. *European Journal of Plant Pathology*, **138**, 499–511.

Carlsson-Granér U, Thrall PH (2006) The impact of host longevity on disease transmission: host-pathogen dynamics and the evolution of resistance. *Evolutionary Ecology Research*, **8**, 659–675.

Chevreur, B, Wetter, T and Suhai, S (1999) Genome sequence assembly using trace signals and additional sequence information. *Computer Science and Biology: Proceedings of the German Conference on Bioinformatics (GCB)*, **99**, 45–56.

Comes HP, Kadereit JW (1998) The effect of Quaternary climatic changes on plant distribution and evolution. *Trends in Plant Science*, **3**, 432–438.

Cripps CL, Eddington LH (2005) Distribution of mycorrhizal types among alpine vascular plant families on the Beartooth Plateau, Rocky Mountains, U.S.A., in reference to large-scale patterns in arctic–alpine habitats. *Arctic, Antarctic, and Alpine Research*, **37**, 177–188.

Earl DA, vonHoldt BM (2012) STRUCTURE HARVESTER: a website and program for visualizing STRUCTURE output and implementing the Evanno method. *Conservation Genetics Resources*, **4**, 359–361.

Ehlers J, Gibbard PL (2007) The extent and chronology of Cenozoic Global Glaciation. *Quaternary International*, **164–165**, 6–20.

Eidesen PB, Alsos IG, Popp M *et al.* (2007) Nuclear vs. plastid data: complex Pleistocene history of a circumpolar key species. *Molecular Ecology*, **16**, 3902–3925.

Eidesen PB, Ehrich D, Bakkestuen V *et al.* (2013) Genetic roadmap of the Arctic: plant dispersal highways, traffic barriers and capitals of diversity. *New Phytologist*, **200**, 898–910.

Farr DF (Ed.) (1989) Fungi on plants and plant products in the United States. APS Press, St. Paul, Minn.

Fontaine MC, Gladieux P, Hood ME, Giraud T (2013) History of the invasion of the anther smut pathogen on *Silene latifolia* in North America. *New Phytologist*, **198**, 946–956.

Forbis TA, Doak DF (2004) Seedling establishment and life history trade-offs in alpine plants. *American Journal of Botany*, **91**, 1147–1153.

Gao H, Williamson S, Bustamante CD (2007) A Markov Chain Monte Carlo Approach for joint inference of population structure and inbreeding rates from multilocus genotype data. *Genetics*, **176**, 1635–1651.

This article is protected by copyright. All rights reserved.

- Le Gac M, Hood ME, Fournier E, Giraud T (2007) Phylogenetic evidence of host-specific cryptic species in the anther smut fungus. *Evolution* **61**, 15–26.
- Giraud T (2004) Patterns of within population dispersal and mating of the fungus *Microbotryum violaceum* parasitising the plant *Silene latifolia*. *Heredity*, **93**, 559–565.
- Giraud T, Fournier E, Vautrin D, Solignac M, Shykoff JA (2002) Isolation of 44 polymorphic microsatellite loci in three host races of the phytopathogenic fungus *Microbotryum violaceum*. *Molecular Ecology Notes*, **2**, 142–146.
- Giraud T, Jonot O, Shykoff JA (2005) Selfing propensity under choice conditions in a parasitic fungus, *Microbotryum violaceum*, and parameters influencing infection success in artificial inoculations. *International Journal of Plant Sciences*, **166**, 649–657.
- Giraud T, Yockteng R, Lopez-Villavicencio M, Refregier G, Hood ME (2008a) Mating system of the anther smut fungus *Microbotryum violaceum*: Selfing under heterothallism. *Eukaryotic Cell*, **7**, 765–775.
- Giraud T, Yockteng R, Marthey S, Chiapello H, Jonot O, Lopez-Villavicencio M, De Vienne DM, Hood ME, Refregier G, Gendraud-Jacquemard A (2008b) Permanent genetic resources: Isolation of 60 polymorphic microsatellite loci in EST libraries of four sibling species of the phytopathogenic fungal complex *Microbotryum*. *Molecular Ecology Resources*, **8**, 387–392.
- Gladieux P, Byrnes EJ, Aguileta G *et al.* (2011) Epidemiology and evolution of fungal pathogens in plants and animals. *Genetics and Evolution of infectious disease*, pp. 59–132. Elsevier.
- Gladieux P, Feurtey A, Hood ME *et al.* (2015) The population biology of fungal invasions. *Molecular Ecology*, **24**, 1969–1986.
- Goudet J (2014) hierfstat: Estimation and tests of hierarchical F-statistics. Available from <http://www2.unil.ch/popgen/softwares/hierfstat.htm>.
- Hewitt GM (1996) Some genetic consequences of ice ages, and their role in divergence and speciation. *Biological Journal of the Linnean Society*, **58**, 247–276.
- Hewitt GM (2004) Genetic consequences of climatic oscillations in the Quaternary. *Philosophical Transactions of the Royal Society B: Biological Sciences*, **359**, 183–195.
- Hood ME, Antonovics J (2000) Intratetrad mating, heterozygosity, and the maintenance of deleterious alleles in *Microbotryum violaceum* (= *Ustilago violacea*). *Heredity*, **85**, 231–241.
- Hood ME (2003) Dynamics of Multiple Infection and Within-Host Competition by the Anther-Smut Pathogen. *The American Naturalist*, **162**, 122–133.
- Hood ME, Antonovics J (2003) Plant species descriptions show signs of disease. *Proceedings of the Royal Society B: Biological Sciences*, **270**, S156–S158.
- Hood ME, Antonovics J (2004) Mating within the meiotic tetrad and the maintenance of genomic heterozygosity. *Genetics*, **166**, 1751–1759.
- Hood ME, Mena-Alí JI, Gibson AK *et al.* (2010) Distribution of the anther-smut pathogen *Microbotryum* on species of the Caryophyllaceae. *New Phytologist*, **187**, 217–229.
- Hultén E, Fries M (1986) *Atlas of North European vascular plants: North of the tropic of cancer. 3: commentary to the maps: total index*. Koeltz, Königstein.
- Jakobsson M, Rosenberg NA (2007) CLUMPP: a cluster matching and permutation program for dealing with label switching and multimodality in analysis of population structure. *Bioinformatics*, **23**, 1801–1806.
- Jones V, Richards PW (1962) *Silene acaulis* (L.) Jacq. *The Journal of Ecology*, **50**, 475.
- Kaltz O, Gandon S, Michalakakis Y, Shykoff JA (1999) Local maladaptation in the anther-smut

This article is protected by copyright. All rights reserved.

fungus *Microbotryum violaceum* to its host plant *Silene latifolia*: Evidence from a cross-inoculation experiment. *Evolution*, **53**, 395.

- Karron JD, Ivey CT, Mitchell RJ, Whitehead MR, Peakall R, Case AL (2012) New perspectives on the evolution of plant mating systems. *Annals of Botany*, **109**, 493–503.
- Koch MA, Kiefer C, Ehrich D *et al.* (2006) Three times out of Asia Minor: the phylogeography of *Arabis alpina* L. (Brassicaceae): Phylogeography of *Arabis alpina*. *Molecular Ecology*, **15**, 825–839.
- Körner C (2003) *Alpine plant life: functional plant ecology of high mountain ecosystems*. Springer, Berlin; New York.
- Landry PA, Koskinen MT, Primmer CR (2002) Deriving evolutionary relationships among populations using microsatellites and (deltamu)(2): all loci are equal, but some are more equal than others.. *Genetics*, **161**, 1339–1347.
- Leese F, Held C (2011) Analysing intraspecific genetic variation: A practical guide using mitochondrial DNA and microsatellites. Held C, Koenemann S, Schubart CD (eds): Phylogeography and population genetics in Crustacea, *Crustacean Issues*, **19**, CRC Press, 3–30.
- Levin DA (2012) Mating system shifts on the trailing edge. *Annals of Botany* **109**: 613–620.
- Lira-Noriega A, Toro-Nunez O, Oaks JR, Mort ME (2015) The roles of history and ecology in chloroplast phylogeographic patterns of the bird-dispersed plant parasite *Phoradendron californicum* (Viscaceae) in the Sonoran Desert. *American Journal of Botany*, **102**, 149–164
- Ligges U, Mächler M. (2003). Scatterplot3d - an R Package for Visualizing Multivariate Data. *Journal of Statistical Software*, **8**, 11, 1-20.
- López-Villavicencio M, Courjol F, Gibson AK *et al.* (2011) Competition, cooperation among skin, and virulence in multiple infections. *Evolution*, **65**, 1357–1366.
- Loecher M, Ropkins, K (2015). RgoogleMaps and loa: Unleashing R Graphics Power on Map Tiles. *Journal of Statistical Software*, **63**, 4, 1-18. Available from <http://www.jstatsoft.org/v63/i04/>.
- López-Villavicencio M, Jonot O, Coantic A *et al.* (2007) Multiple infections by the anther smut pathogen are frequent and involve related strains. *PLoS Pathogens*, **3**, e176.
- Lutz M, Piątek M, Kemler M, Chlebicki A, Oberwinkler F (2008) Anther smuts of Caryophyllaceae: Molecular analyses reveal further new species. *Mycological Research*, **112**, 1280–1296.
- Marr KL, Allen GA, Hebda RJ, McCormick LJ (2013) Phylogeographical patterns in the widespread arctic-alpine plant *Bistorta vivipara* (Polygonaceae) with emphasis on western North America (LN Gillman, Ed.). *Journal of Biogeography*, **40**, 847–856.
- Marr DL, Delph LF (2005) Spatial and temporal pattern of a pollinator- transmitted pathogen in a long-lived perennial, *Silene acaulis*. *Evolutionary Ecology Research* **7**: 335–352.
- Mayer C, Leese F, Tollrian R (2010) Genome-wide analysis of tandem repeats in *Daphnia pulex* - a comparative approach. *BMC Genomics*, **11**, 277.
- Meirmans PG, Hedrick PW (2011) Assessing population structure: FST and related measures: Invited technical review, *Molecular Ecology Resources*, **11**, 5–18.
- Mikhaylova YV, Gussarova GL, Brochmann C (2010) Molecular variation and phylogeography of the moss campion *Silene acaulis* (L.) Jacq. (Caryophyllaceae) in

This article is protected by copyright. All rights reserved.

the North of Europe and the Svalbard archipelago. *Ecological Genetics* **8**(3): 52-60 [InRussian].

Murray DF (1995) Causes of Arctic plant diversity: Origin and evolution. In: *Arctic and alpine biodiversity: Patterns, causes and ecosystem consequences* (eds Chapin FS, Körner C), pp. 21–32. Springer Berlin Heidelberg, Berlin, Heidelberg.

Nei M (1987) *Molecular evolutionary genetics*. Columbia University Press, New York.

Nei M, Chesser RK (1983) Estimation of fixation indices and gene diversities. *Annals of Human Genetics*, **47**, 253–259.

Nieberding CM, Durette-Desset M-C, Vanderpoorten A *et al.* (2008) Geography and host biogeography matter for understanding the phylogeography of a parasite. *Molecular Phylogenetics and Evolution*, **47**, 538–554.

Oksanen J, Blanchet FG, Kindt R, Legendre P, Minchin PR, O'Hara RB, Simpson GL, Solymos P, Stevens MHH, Wagner H (2014). *vegan: Community Ecology Package*. R package version 2.2-0. Available from <http://CRAN.R-project.org/package=vegan>.

Özgökçe KT, Stevanović V (2005) A new subspecies of *Silene acaulis* (Caryophyllaceae) from East Anatolia, Turkey. *Ann. Bot. Fennici* **42**, 143–149.

Peakall R, Smouse PE (2006) *genalex 6: genetic analysis in Excel*. Population genetic software for teaching and research. *Molecular Ecology Notes*, **6**, 288–295.

Petit RJ, El Mousadik A, Pons O (1998) Identifying populations for conservation on the basis of genetic markers. *Conservation Biology*, **12**, 844–855.

Pritchard JK, Stephens M, Donnelly P (2000) Inference of population structure using multilocus genotype data. *Genetics*, **155**, 945–959.

Rabeler, RK (1993) The occurrence of anther smut, *Ustilago violacea* s.l., on *Stellaria borealis* (Caryophyllaceae) in North America. *Contr. Univ. Mich. Herb.* **19**: 165-169.

Van Oosterhout C, Hutchinson WF, Wills DPM, Shipley PF (2004) MICRO-CHECKER: For identifying and correcting genotyping errors in microsatellite data. *Molecular Ecology Notes*, **4**, 535–538.

Paradis E, Claude J, Strimmer, K (2004) APE: analyses of phylogenetics and evolution in R language. *Bioinformatics*, **20**, 289-290.

Van Putten WF, Biere A, Van Damme JMM (2003) Intraspecific competition and mating between fungal strains of the anther smut *Microbotryum violaceum* from the host plants *Silene latifolia* and *S. dioica*. *Evolution*, **57**, 766.

Van Putten WF, Biere A, Van Damme JMM (2005) Host-related genetic differentiation in the anther smut fungus *Microbotryum violaceum* in sympatric, parapatric and allopatric populations of two host species *Silene latifolia* and *S. dioica*. *Journal of Evolutionary Biology*, **18**, 203–212.

Rosenberg NA (2003) *distrupt*: a program for the graphical display of population structure: PROGRAM NOTE. *Molecular Ecology Notes*, **4**, 137–138.

Rousset F (2008) *genepop'007*: a complete re-implementation of the genepop software for Windows and Linux. *Molecular Ecology Resources*, **8**, 103–106.

Rousset F, Raymond M (1995) Testing heterozygote excess and deficiency. *Genetics*, **140**, 1413–1419.

Rozen S, Skaletsky H (2000) Primer3 on the WWW for general users and for biologist programmers. *Methods in Molecular Biology (Clifton, N.J.)*, **132**, 365–386.

RStudio Team (2015). RStudio: Integrated Development for R. RStudio, Inc., Boston, MA Available from: <http://www.rstudio.com/>.

This article is protected by copyright. All rights reserved.

- Schäfer AM, Kemler M, Bauer R, Begerow D (2010) The illustrated life cycle of *Microbotryum* on the host plant *Silene latifolia*. *Botany*, **88**, 875–885.
- Schönswetter P, Paun O, Tribsch A, Niklfeld H (2003) Out of the Alps: colonization of Northern Europe by East Alpine populations of the Glacier Buttercup *Ranunculus glacialis* L. (Ranunculaceae). *Molecular Ecology*, **12**, 3373–3381.
- Schönswetter P, Popp M, Brochmann C (2006) Rare arctic-alpine plants of the European Alps have different immigration histories: the snow bed species *Minuartia biflora* and *Ranunculus pygmaeus*: Migration of arctic-alpine plants. *Molecular Ecology*, **15**, 709–720.
- Schönswetter P, Stehlik I, Holderegger R, Tribsch A (2005) Molecular evidence for glacial refugia of mountain plants in the European Alps. *Molecular Ecology*, **14**, 3547–3555.
- Skrede I, Eidesen PB, Portela RP, Brochmann C (2006) Refugia, differentiation and postglacial migration in arctic-alpine Eurasia, exemplified by the mountain avens (*Dryas octopetala* L.): Phylogeography of *Dryas octopetala* in Eurasia. *Molecular Ecology*, **15**, 1827–1840.
- Stehlik I, Blattner FR, Holderegger R, Bachmann K (2002) Nunatak survival of the high Alpine plant *Eritrichium nanum* (L.) Gaudin in the central Alps during the ice ages. *Molecular Ecology*, **11**, 2027–2036.
- Stewart JR, Lister AM, Barnes I, Dalen L (2010) Refugia revisited: individualistic responses of species in space and time. *Proceedings of the Royal Society B: Biological Sciences*, **277**, 661–671.
- Susi H, Laine A-L (2015) The effectiveness and costs of pathogen resistance strategies in a perennial plant (A Power, Ed.). *Journal of Ecology*, **103**, 303–315.
- Taberlet P, Fumagalli L, Wust-Saucy A-G, Cosson J-F (1998) Comparative phylogeography and postglacial colonization routes in Europe. *Molecular Ecology*, **7**, 453–464.
- Taylor DR, Keller SR (2007) Historical range expansion determines the phylogenetic diversity introduced during contemporary species invasion. *Evolution*, **61**, 334–345.
- Uchida W, Matsunaga S, Sugiyama R, Kazama Y, Kawano S (2003) Morphological development of anthers induced by the dimorphic smut fungus *Microbotryum violaceum* in female flowers of the dioecious plant *Silene latifolia*. *Planta*, **218**, 240–248.
- Vercken E, Fontaine MC, Gladieux P *et al.* (2010) Glacial refugia in pathogens: European genetic structure of anther smut pathogens on *Silene latifolia* and *Silene dioica* (BJ Howlett, Ed.). *PLoS Pathogens*, **6**, e1001229.
- Westergaard KB, Alsos IG, Engelskjøn T, Flatberg KI, Brochmann C (2011) Trans-Atlantic genetic uniformity in the rare snowbed sedge *Carex rufina*. *Conservation Genetics*, **12**, 1367–1371.

DATA ACCESSIBILITY

- Sampling locations: Online Supporting Information
- Dryad: Microsatellite data, Structure Input files, Herbaria-Collections: doi:10.5061/dryad.5pt70

This article is protected by copyright. All rights reserved.

AUTHOR CONTRIBUTIONS

MEH analysed herbarium specimens. MEH and TG performed the sampling in the global dataset. CE developed the second set of markers and performed the sampling in Norway and Svalbard. ASch helped with the design of the second marker set and designed the sampling strategy in Norway and Svalbard. DB coordinated the sampling and analysis of the second set of markers. DJB and AS genotyped the global dataset. PG and DJB carried out preliminary analyses of a first version of the dataset. BB performed the final analyses of population genetics for both datasets. PG supervised population genetics analyses. BB, MEH, PG and TG wrote the manuscript, with contributions by all authors. TG, MEH and DB supervised the whole project.

TABLES

Table 1. Polymorphism in *Microbotryum silenes-acaulis* from different geographic regions.

	Southern Europe ¹	Northern Europe ¹	North America ¹	Norway/Svalbard ²
N	53	121	21	110
A _r ⁺	4.89	2.65	3.76	2.87
H _O ⁺	0.19	0.11	0.18	0.08
H _E ⁺	0.45	0.18	0.35	0.33
G _{IS} ⁺	0.32**	0.09**	0.13**	0.65**

N: Number of individuals analyzed, A_r: Allelic richness, H_E: Expected heterozygosity, H_O: Observed heterozygosity, G_{IS}: Inbreeding coefficient, ¹: using sixteen microsatellite markers developed in Giraud *et al.* 2008 and Bucheli *et al.* 1998, ²: using the seven microsatellite markers developed in this study. ⁺Average across markers. ** p-value < 0.05; *** p-value < 0.01.

This article is protected by copyright. All rights reserved.

Table 2. Number of *Microbotryum silenes-acaulis* individuals, diversity (allelic richness A_r and expected heterozygosity H_E) and selfing rates for the STRUCTURE clusters with $K = 5$ in the whole dataset of *Microbotryum silenes-acaulis*.

	N	A_r	H_E	Selfing rate
Blue cluster/ `North America´	16	2.31	0.54	0.63
Yellow cluster/ `Norway´	106	1.69	0.18	0.67
Dark Green cluster/ `South Europe I´	22	3.51	0.58	0.37
Red cluster/ `South Europe II´	22	2.04	0.08	0.69
Orange cluster/ `South Europe III´	13	2.10	0.42	0.46

⁺Average across the sixteen microsatellite markers developed in Giraud *et al.* 2008 and Bucheli *et al.* 1998; N: Number of individuals, A_r : Allelic richness; H_E : Expected heterozygosity

Table 3. Genetic differentiation (F_{ST}) values between *Microbotryum silenes-acaulis* genetic clusters at $K = 5$.

	Blue	Yellow	Dark Green	Red	Orange
Blue cluster/ `North America´	0				
Yellow cluster/ `Norway´	0.43	0			
Dark Green cluster/ `South Europe I´	0.31	0.23	0		
Red cluster/ `South Europe II´	0.45	0.09	0.16	0	
Orange cluster/ `South Europe III´	0.35	0.15	0.25	0.20	0

This article is protected by copyright. All rights reserved.

Table 4. Number of individuals, diversity (allelic richness A_r and expected heterozygosity H_E) and selfing rates for the genetic clusters at $K=4$ in the Norway/Svalbard populations of *Microbotryum silenes-acaulis*.

	N	A_r	H_E	Selfing rate
Red cluster	28	2.02	0.22	0.81
Blue cluster	22	2.04	0.18	0.72
Yellow cluster	23	1.77	0.16	0.74
Green cluster	25	2.12	0.19	0.77

⁺Average across seven microsatellite markers developed in the present study; N: Number of individuals analyzed, Number of different alleles per locus; A_r : Allelic richness; H_E : Expected heterozygosity.

FIGURE LEGENDS

Figure 1. Distribution map of healthy (green points) and diseased (red points) *Silene acaulis* specimen observed in herbaria. The distribution map of *S. acaulis* after Hulten Fries (1986) is shown in green. Blue points represent regions from where populations for present study were sampled.

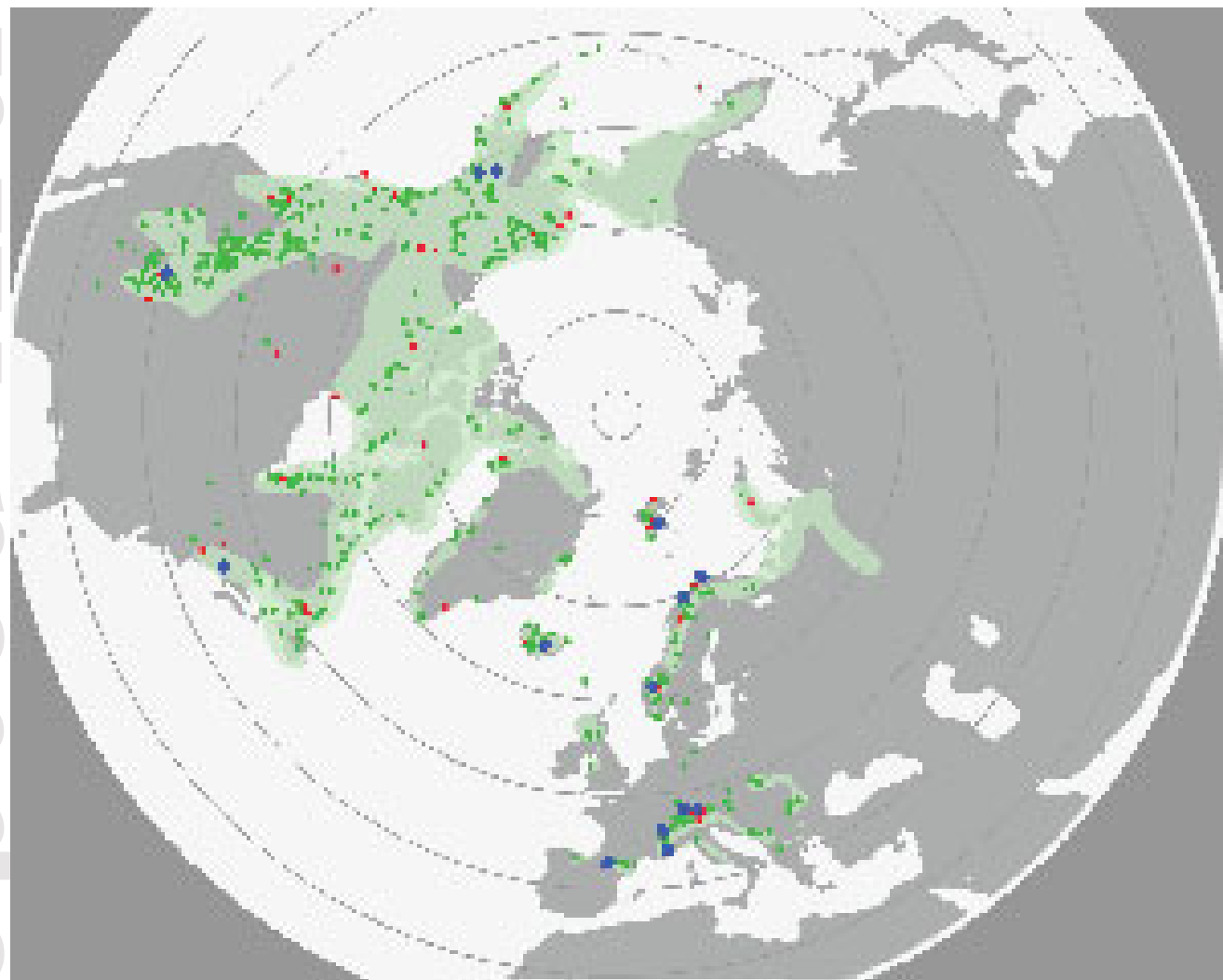
Figure 2. Density of *Silene acaulis* localities near diseased and healthy herbarium collection sites. Sites are sorted by the number of other collections sites within a 100 km radius around diseased sites (red line) and around randomly selected healthy sites (grey lines; first 40 random healthy sites shown).

Figure 3. Demographic and disease incidence variation in *Silene acaulis* across southern to northern latitudes. Herbarium localities ($N = 790$) were divided into latitude quartiles for analysis and density of herbarium collection sites was based upon 100km radii.

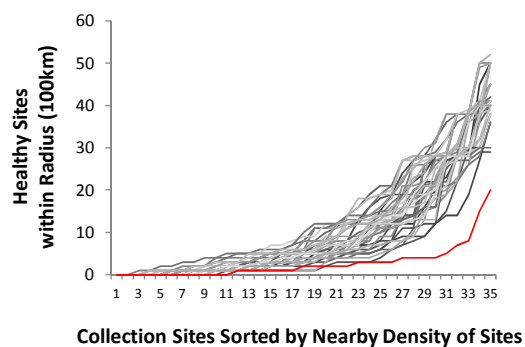
Figure 4. Genetic clustering of *Microbotryum silenes-acaulis* genotypes for the worldwide data set ($N = 195$) under the assumptions from $K = 3$ to $K = 8$ clusters. Each vertical bar represents an individual and the colors indicate the proportion of its genotype assigned to the different clusters.

This article is protected by copyright. All rights reserved.

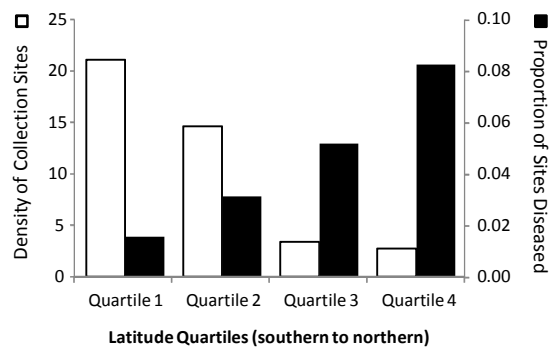
Figure 5. Maps showing the mean assignment proportions per locality estimated from the STRUCTURE analyses at $K = 3$ (a) and $K = 8$ (b). The square at the bottom is a zoom on the three localities in the Alps. Neighbour-joining trees illustrate the genetic distances among clusters based on F_{ST} distances.



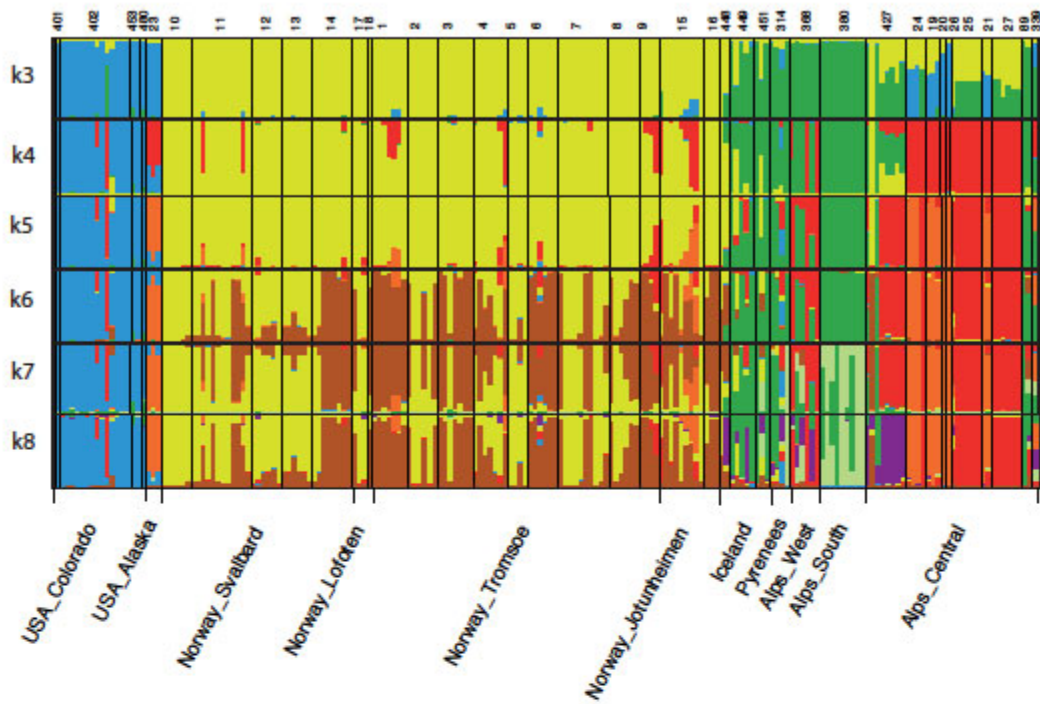
This article is protected by copyright. All rights reserved.



This article is protected by copyright. All rights reserved.

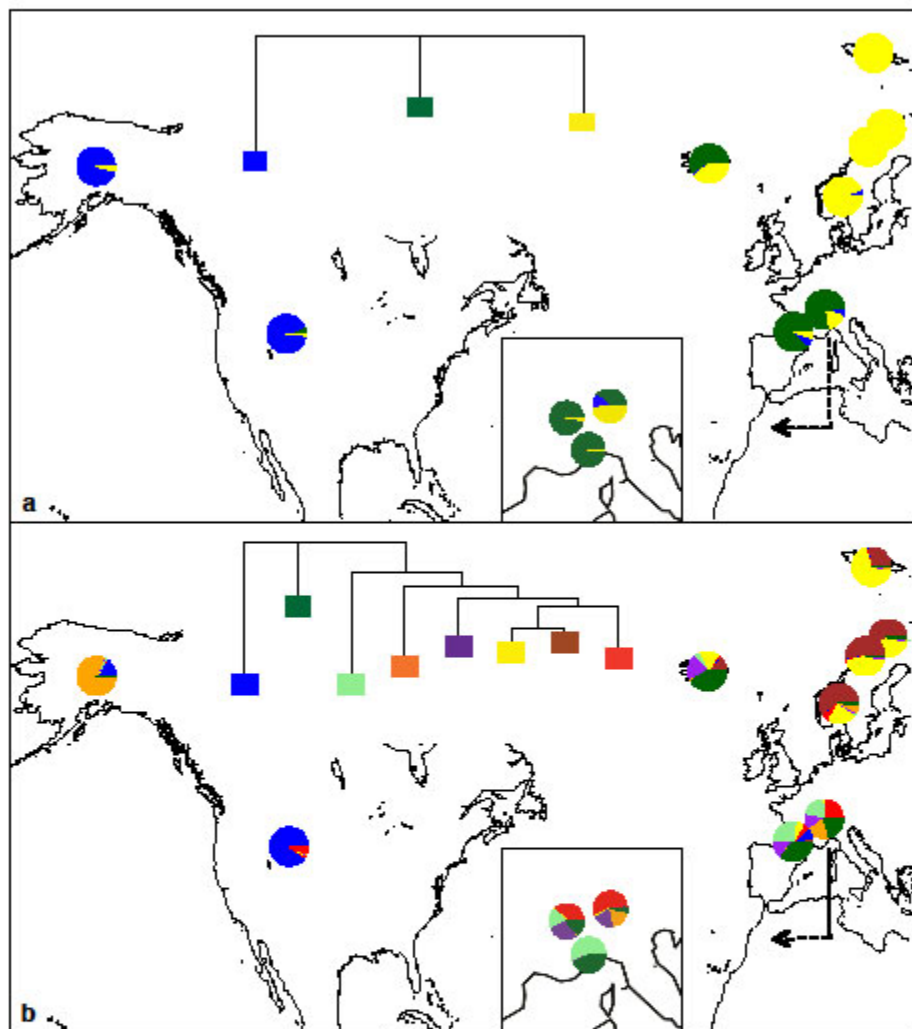


This article is protected by copyright. All rights reserved.



This article is protected by copyright. All rights reserved.

Bueker, B., Eberlein, C., Gladieux, P., Schaefer, A., Snirc, A., Bennett, D. J., Begerow, D., Hood, M. E. (Auteur de correspondance), Giraud, T. (2016). Distribution and population structure of the anther smut *Microbotryum silenes-acaulis* parasitizing an arctic-alpine plant. *Molecular Ecology*. 25 (3). 811-824. DOI : 10.1111/mec.13512



This article is protected by copyright. All rights reserved.