



**HAL**  
open science

## **Toxicity of CeO<sub>2</sub> nanoparticles on a freshwater experimental trophic chain: A study in environmentally relevant conditions through the use of mesocosms**

Agathe Bour, Florence Mouchet, Stéphane Cadarsi, Jérôme Sylvestre, Laurent Verneuil, David Baqué, Eric Chauvet, Jean-Marc Bonzom, Christophe Pagnout, Hugues Clivot, et al.

### ► To cite this version:

Agathe Bour, Florence Mouchet, Stéphane Cadarsi, Jérôme Sylvestre, Laurent Verneuil, et al.. Toxicity of CeO<sub>2</sub> nanoparticles on a freshwater experimental trophic chain: A study in environmentally relevant conditions through the use of mesocosms. *Nanotoxicology*, 2016, 10 (2), pp.245-255. 10.3109/17435390.2015.1053422 . hal-01494965

**HAL Id: hal-01494965**

**<https://hal.science/hal-01494965>**

Submitted on 24 Mar 2017

**HAL** is a multi-disciplinary open access archive for the deposit and dissemination of scientific research documents, whether they are published or not. The documents may come from teaching and research institutions in France or abroad, or from public or private research centers.

L'archive ouverte pluridisciplinaire **HAL**, est destinée au dépôt et à la diffusion de documents scientifiques de niveau recherche, publiés ou non, émanant des établissements d'enseignement et de recherche français ou étrangers, des laboratoires publics ou privés.



## Open Archive TOULOUSE Archive Ouverte (OATAO)

OATAO is an open access repository that collects the work of Toulouse researchers and makes it freely available over the web where possible.

This is an author-deposited version published in : <http://oatao.univ-toulouse.fr/>  
Eprints ID : 15745

**To link to this article** : DOI : 10.3109/17435390.2015.1053422  
URL : <http://dx.doi.org/10.3109/17435390.2015.1053422>

**To cite this version** : Bour, Agathe and Mouchet, Florence and Cadarsi, Stéphane and Sylvestre, Jérôme and Verneuil, Laurent and Baqué, David and Chauvet, Eric and Bonzom, Jean-Marc and Pagnout, Christophe and Clivot, Hugues and Fourquaux, Isabelle and Tella, Marie and Auffan, Mélanie and Gauthier, Laury and Pinelli, Eric *Toxicity of CeO<sub>2</sub> nanoparticles on a freshwater experimental trophic chain: A study in environmentally relevant conditions through the use of mesocosms.* (2016) *Nanotoxicology*, vol. 10 (n°2). pp. 245-255. ISSN 1743-5390

Any correspondence concerning this service should be sent to the repository administrator: [staff-oatao@listes-diff.inp-toulouse.fr](mailto:staff-oatao@listes-diff.inp-toulouse.fr)

# Toxicity of CeO<sub>2</sub> nanoparticles on a freshwater experimental trophic chain: A study in environmentally relevant conditions through the use of mesocosms

Agathe Bour<sup>1,2</sup>, Florence Mouchet<sup>1,2</sup>, Stéphanie Cadarsi<sup>1,2</sup>, Jérôme Silvestre<sup>1,2</sup>, Laurent Verneuil<sup>1,2</sup>, David Baqué<sup>1</sup>, Eric Chauvet<sup>3</sup>, Jean-Marc Bonzom<sup>2,4</sup>, Christophe Pagnout<sup>2,5</sup>, Hugues Clivot<sup>2,5</sup>, Isabelle Fourquaux<sup>6</sup>, Marie Tella<sup>2,7</sup>, Mélanie Auffan<sup>2,7</sup>, Laury Gauthier<sup>1,2</sup>, and Eric Pinelli<sup>1,2</sup>

<sup>1</sup>CNRS, Université de Toulouse, INP, UPS, EcoLab (Laboratoire d'écologie fonctionnelle et environnement) UMR 5245, ENSAT, Avenue de l'Agrobiopole, Castanet Tolosan, France, <sup>2</sup>International Consortium for the Environmental Implications of Nanotechnology (iCEINT), Aix-en-Provence, France, <sup>3</sup>CNRS, Université de Toulouse, INP, UPS, EcoLab (Laboratoire d'écologie fonctionnelle et environnement) UMR 5245, Toulouse, France, <sup>4</sup>Laboratoire de Radioécologie et d'Ecotoxicologie, IRSN (Institut de Radioprotection et de Sécurité Nucléaire), DEI/SECRE, Cadarache, France, <sup>5</sup>CNRS, Université de Lorraine, LIEC (Laboratoire Interdisciplinaire des Environnements Continentaux) UMR 7360, Metz, France, <sup>6</sup>CMEAB (Centre de Microscopie Electronique Appliqué à la Biologie), Université Paul Sabatier, Faculté de Médecine Rangueil, Toulouse, France, and <sup>7</sup>CNRS, Université d'Aix-Marseille, CEREGE UMR 7330, Aix-en-Provence, France

## Abstract

The toxicity of CeO<sub>2</sub> NPs on an experimental freshwater ecosystem was studied in mesocosm, with a focus being placed on the higher trophic level, i.e. the carnivorous amphibian species *Pleurodeles waltl*. The system comprised species at three trophic levels: (i) bacteria, fungi and diatoms, (ii) *Chironomus riparius* larvae as primary consumers and (iii) *Pleurodeles* larvae as secondary consumers. NP contamination consisted of repeated additions of CeO<sub>2</sub> NPs over 4 weeks, to obtain a final concentration of 1 mg/L. NPs were found to settle and accumulate in the sediment. No effects were observed on litter decomposition or associated fungal biomass. Changes in bacterial communities were observed from the third week of NP contamination. Morphological changes in CeO<sub>2</sub> NPs were observed at the end of the experiment. No toxicity was recorded in chironomids, despite substantial NP accumulation (265.8 ± 14.1 mg Ce/kg). Mortality (35.3 ± 6.8%) and a mean Ce concentration of 13.5 ± 3.9 mg/kg were reported for *Pleurodeles*. Parallel experiments were performed on *Pleurodeles* to determine toxicity pathways: no toxicity was observed by direct or dietary exposures, although Ce concentrations almost reached 100 mg/kg. In view of these results, various toxicity mechanisms are proposed and discussed. The toxicity observed on *Pleurodeles* in mesocosm may be indirect, due to microorganism's interaction with CeO<sub>2</sub> NPs, or NP dissolution could have occurred in mesocosm due to the structural complexity of the biological environment, resulting in toxicity to *Pleurodeles*. This study strongly supports the importance of ecotoxicological assessment of NPs under environmentally relevant conditions, using complex biological systems.

## Keywords

Amphibian, chironomidae, ecotoxicity, litter decomposition, microorganisms

## Introduction

Past decades have seen the emergence of new manufactured materials: nanoparticles (NPs). These particles in the size range of 1–100 nm present unique properties, making them highly attractive in many fields of application, including medical purposes (Huang et al., 2011), information and energy storage systems (Rao & Cheetham, 2001) and many consumer products (The Royal Society, 2004). Among these particles, cerium dioxide NPs (CeO<sub>2</sub> NPs) are widely used as fuel catalysts and for anti-UV effects in coatings, paints and cosmetics (Quik et al., 2010). Produced in large amounts (100–1000 tons/year) in Europe (Piccinno et al.,

2012), CeO<sub>2</sub> NPs belong to the OECD priority testing list of representative manufactured nanomaterials (OECD, 2010).

Therefore, several studies have investigated the toxicity of CeO<sub>2</sub> NPs, and they were determined to be acutely toxic to daphnids (García et al., 2011; Lee et al., 2009), chironomids (Lee et al., 2009), nematodes (Roh et al., 2010; Zhang et al., 2011), algae (Manier et al., 2011, 2013; Rogers et al., 2010) and bacteria (Thill et al., 2006), from concentrations in the range of the mg/L. The induction of sub-lethal effects was also shown, with reproduction impairments being observed on nematodes (Roh et al., 2010) and daphnids (Manier et al., 2011), as well as growth inhibition and malformations observed on fish at 10 mg/L (Jemec et al., 2012) and genotoxic effects observed on amphibian species (Bour et al., 2015), chironomids and daphnids (Lee et al., 2009). These studies have been conducted according to standardized procedures, enabling a rapid evaluation of NP toxicity at broad

ranges of concentrations. However, although necessary as a first step of NP ecotoxicity evaluation, standardized ecotoxicity assays are not representative of realistic environmental conditions of exposure. Studies concerning NP ecotoxicity in environmentally relevant conditions have been conducted very recently. Among these studies, mesocosm studies have been conducted to determine NP behavior and toxicity in complex environments (Buffet et al., 2013b; Cleveland et al., 2012; Colman et al., 2014; Ferry et al., 2009; Lowry et al., 2012; Schierz et al., 2014). These studies are still scarce, though indispensable: modest effects within a single trophic level can ramify and amplify through the ecological network and influence the function of the entire ecosystem (Jabiol et al., 2013). Moreover, physico-chemical transformation of NPs (e.g. colloidal destabilization, adsorption, dissolution) in complex environments can change the nature of the interactions with living organisms. NP toxicity can thus be different in complex ecosystems than in single exposure (Wiesner et al., 2009).

The amphibian species *Pleurodeles waltl.* is a well-known indicator of the genotoxic potential of contaminants (Djomo et al., 2000; Fernandez et al., 1993), referenced in the ISO standardized assay for the evaluation of genotoxicity by measurement of the induction of micronuclei (ISO 21427-1, 2006). This model organism also presents the advantage of being carnivorous, making it particularly interesting for food chain studies. The macro-invertebrate *Chironomus riparius* is representative of many freshwater ecosystems and has been widely used in ecotoxicology. Chironomid larvae have important activities of sediment reworking and biofilm grazing, making them potential vectors for trophic transfer. *Nitzschia palea* and *Navicula pelliculosa* are benthic diatoms living in numerous freshwater ecosystems. They represent a valuable source of food for many aquatic organisms and are at the base of multiple trophic webs. The toxicity of CeO<sub>2</sub> NPs on *P. waltl.*, *C. riparius* and *N. palea* have previously been studied in standardized exposure conditions (Bour et al., 2015).

This study intends to go further in the comprehension of CeO<sub>2</sub> NP toxicity in environmentally relevant exposure conditions, using larvae of the amphibian *P. waltl.* as top-consumers of an experimental trophic chain. For this purpose, we used indoor aquatic mesocosms to perform integrated assessment of CeO<sub>2</sub> NP impacts in complex environment. This study was complemented with parallel experiments where *Pleurodeles* larvae were exposed to CeO<sub>2</sub> NPs by direct or dietary exposure. Mesocosms are complex systems comprising (i) a bacterial consortium and the diatom species *N. palea* and *N. pelliculosa* as primary producers, (ii) *C. riparius* larvae as primary consumers and (iii) *Pleurodeles* larvae, as predator species at the top of the trophic chain. The complete study of CeO<sub>2</sub> NP fate and effects in mesocosm has already been studied (Auffan et al., 2014) and is beyond the scope of this article. This study focuses on the impacts on *Pleurodeles* larvae, as the final endpoint of the trophic chain. Other species present in mesocosm are studied as vectors of contamination through the trophic chain.

## Materials and methods

### Nanoparticles

CeO<sub>2</sub> NPs (Nanograin<sup>®</sup>, Umicore, Olen, Belgium) were provided as a powder preparation and subsequently suspended in ultrapure water at 10 g/L. They are non-coated particles of cerine with a face centered cubic crystal structure. They have zeta potential of  $+42 \pm 2$  mV and hydrodynamic diameters centered on  $90 \pm 2$  nm in stock suspension (pH 3.1). Zeta potential and hydrodynamic diameters were measured using Malvern zetasizer and nanoZS (Malvern Instruments Ltd., Malvern, UK). Primary size and shape were determined in stock suspension and exposure media by

Transmission Electron Microscopy (TEM, JeolJsm 2100F, HR, JEOL USA, Inc., Peabody, MA) coupled to Energy Dispersive X-ray spectroscopy (EDX, SDD Bruker, Billerica, MA). Size distribution is determined by image analysis (ImageJ<sup>®</sup> Software, National Institutes of Health, Bethesda, MD) on a sample of 100 NPs.

### Organisms

Diatoms (*N. palea* and *N. pelliculosa*), chironomid (*C. riparius*) and amphibian (*P. waltl.*) larvae were grown at EcoLab Laboratory (Toulouse, France). Diatoms were cultured in CHU 10 medium with Fe-EDTA as an iron source (<http://uwaterloo.ca/canadian-phycological-culture-centre/cultures/culture-media/chu-10>). *Pleurodeles* larvae were obtained and grown as described in Mouchet et al. (2011). Chironomid larvae were obtained and grown following standardized procedures (AFNOR, 2004). A natural microbial consortium was recovered from water filters of the freshwater Museum-Aquarium of Nancy (France).

### Exposure methods

#### Mesocosm experiment

Six mesocosms (glass tanks; 75 × 20 × 60 cm; Figure 1) were filled with reconstituted sediment (89% silica sand, 10% kaolin, 1% calcium carbonate) and Volvic<sup>®</sup> water. Each mesocosm contained 6.5 L of reconstituted sediment and 56 L of water and was equipped with a water recirculating system connected to a pump (Eheim universal, 600 L/h). Natural light was provided by T8 tubes (18 W, 5500 K, Vivalite<sup>®</sup>) under 16:8 light-dark cycles and temperature was maintained at  $21 \pm 1$  °C. Temperature, conductivity, pH, redox potential and dissolved oxygen were monitored continuously (Ponsel Odeon open X probes kit). NO<sub>3</sub><sup>-</sup>, NO<sub>2</sub><sup>-</sup> and NH<sub>4</sub><sup>+</sup> rates were controlled every 3 days with a colorimetric assay kit (Tetra, Germany). Dissolved organic carbon (DOC) was measured in the water column by infrared detection of CO<sub>2</sub> produced by catalytic oxidation at 680 °C. Experimental conditions were realized in three replicates, with random assignment of mesocosms.

*Experiment implementation.* Senescent alder (*Alnus glutinosa* Gaertn.) leaves (3.2 g dry mass/mesocosm) and microorganisms (a microbial consortium and the diatoms *N. palea* and *N. pelliculosa*,  $1.10^6$ ,  $2.10^2$  and  $2.10^4$  cells/ml, respectively)

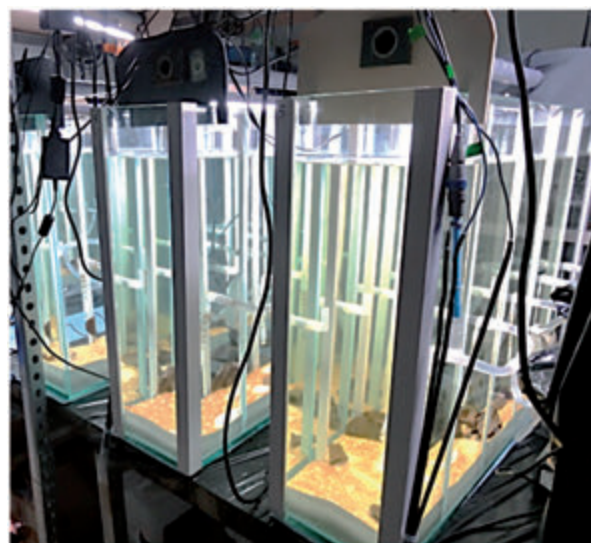


Figure 1. Aquatic mesocosms before NP contamination (T0).



were added at the beginning of the experiment. Biofilm was allowed to develop for two weeks before NP contamination (Figures 2 and 3). Contamination consisted of repeated addition of NPs: 12 additions of fresh NP suspension (50 ml of 93.4 mg/L per input) were realized over 4 weeks. Deionized water was added in control mesocosms instead of NP suspension. After 1 week of contamination (T1), 700 chironomid larvae aged of 72 h were added to each mesocosm. Seventeen *Pleurodeles* larvae at stage 53 of development (Gallien & Durocher, 1957) were introduced 1 week later (T2). The experiment ended 12 days later (T4): amphibian larvae were withdrawn from mesocosms for immediate toxicity assessment and sediment was sieved to collect remaining chironomids then stored in 70% ethanol for further analysis. The overall implementation is presented in Figure 3.

#### Direct exposure

Direct exposure of *Pleurodeles* larvae was performed according to standardized test for micronucleus induction assessment (ISO 21427-1, 2006). Groups of 15 larvae at stage 53 of development

(Gallien & Durocher, 1957) were exposed in Volvic® water for 12 days, with daily medium renewal. CeO<sub>2</sub> NP concentrations ranged from 0.015 to 1.4 mg/L. A standard mutagen (monohydrate cyclophosphamide 2 mg/L; ISO 21427-1, 2006; Sigma, France) was used as a positive control. At the end of the exposure, larvae were allowed to depurate for two days in non-contaminated Volvic® water.

#### Dietary exposure

As a first step, chironomid larvae (7 days old) were exposed to CeO<sub>2</sub> NPs at 1 mg/L for 48 h. Exposure was performed in Volvic® water (without sediments). Larvae from control group (control chironomids) were placed in non-contaminated Volvic® water.

*Pleurodeles* dietary exposure is adapted from standardized procedures (ISO 21427-1, 2006). Larvae ( $n = 20$ ) at stage 53 of development (Gallien & Durocher, 1957) are individually placed in 200 mL of Volvic® water for 12 days, with water renewal every 2 days. Every day, the same number of chironomids previously exposed was provided to each *Pleurodeles* larvae. The control

Figure 2. Experimental trophic chain studied in mesocosm. (A) Schematic representation of trophic relations between species, from consumers to prey. (B) Primary compartment before NP contamination. Biofilm cannot develop under alder leaves due to a lack of light, leaving white patches when leaves move. (C) *Chironomus riparius* larvae grazing biofilm. (D) *Pleurodeles waltl.* larvae hunting chironomid larvae.

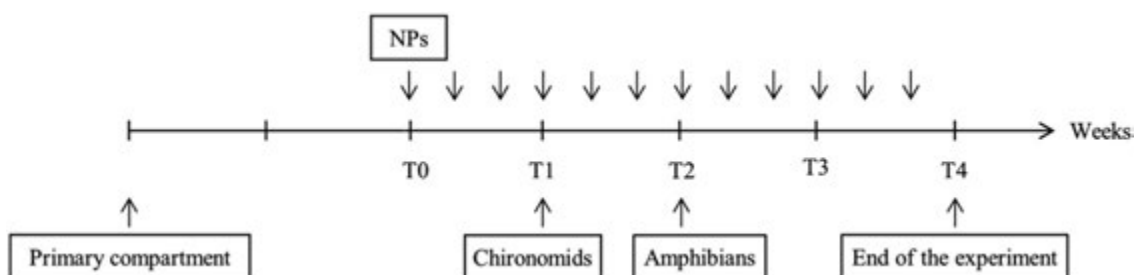
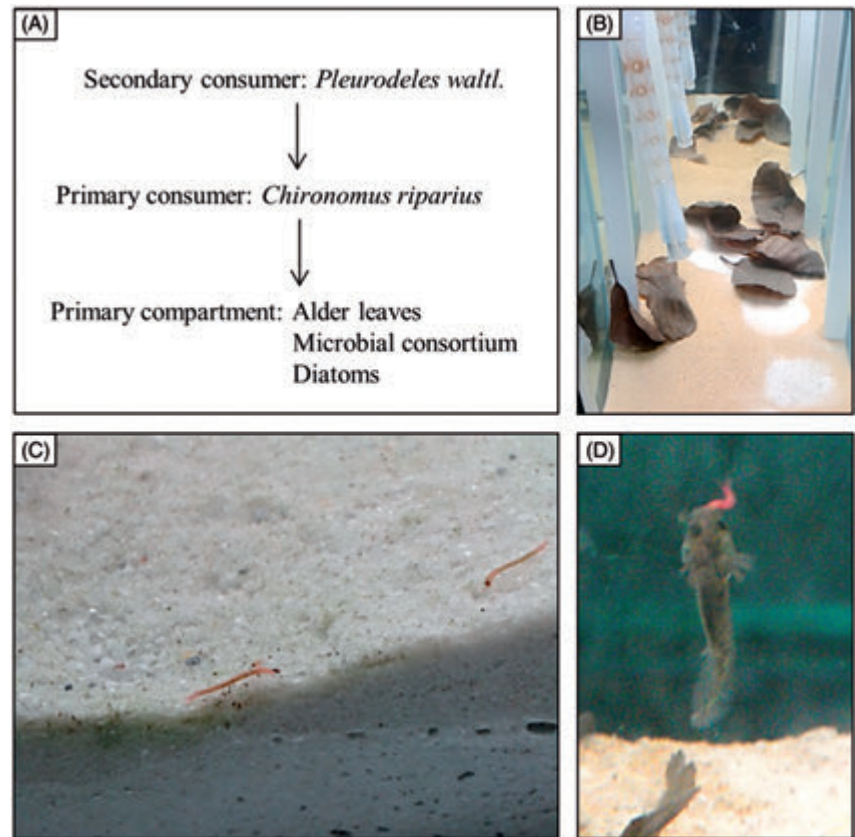


Figure 3. Schematic representation of mesocosm experiment implementation.

group ( $n=10$ ) was fed on control chironomids, and the contaminated group ( $n=10$ ) was fed on contaminated chironomids. The number of chironomids was increased over time to comply with the growing needs of the *Pleurodeles*. Before feeding the *Pleurodeles* larvae, the chironomids were gently rinsed with deionized water but not allowed to deplete, to mimic natural conditions where depuration does not occur. *Pleurodeles* were allowed to deplete for two days and gently rinsed with deionized water at the end of the exposure, for bioaccumulation assessment purposes.

*Pleurodeles* exposure water was sampled before renewal to assess Ce release from organisms.

### NP quantification

Ce concentrations were measured in water, in sediment and in organisms by ICP-MS (PerkinElmer, NexIon 300X, Shelton, CT). In mesocosms, water was sampled at 10 cm below the surface before the first NP addition (T0), before chironomid and *Pleurodeles* larvae introduction (T1 and T2, respectively) and at the end of the experiment (T4), and analyzed for total and dissolved Ce. The dissolved fraction was estimated after ultracentrifugation (80 000 rpm, 1 h). Surficial sediment (10 mm) was sampled at the end of the experiment for total Ce concentrations after acidic digestion. In addition, cores were analyzed to get Ce contents in 1 mm-deep slices. Ce concentrations in organisms were measured in triplicates (pools of three *Pleurodeles* and 20 chironomid larvae). Water, sediment and organisms samples were prepared as described in Tella et al. (2014).

### Toxicity assessment

#### *Toxicity on Pleurodeles larvae*

Toxicity assessment on *Pleurodeles* was consistent for the three exposure methods. Acute toxicity was expressed as percentage and determined as the total number of dead larvae, counted and removed daily. Genotoxicity was assessed as micronuclei induction in erythrocytes from circulating blood, as described in Mouchet et al. (2011) and in accordance with the standardized ISO procedure (ISO 21427-1, 2006).

Nanoparticle internalization was assessed on gills and intestine for the mesocosm experiment and on intestine only for dietary exposure experiment. After blood sampling, larvae were dissected and organs were fixed in 2% glutaraldehyde in sodium phosphate buffer, post-fixed in 1% osmium tetroxide, dehydrated and embedded in Embed812-Araldite502 resin. Ultra-thin sections (50–90 nm deep) were mounted on copper grids and subsequently stained in lead citrate and uranyl acetate solutions. Observations were performed on high resolution TEM-EDX (JeolJsm 2100F, HR – SDD Bruker).

#### *Litter decomposition and effects on associated organisms*

**Leaf litter decomposition.** The proportion of leaf mass remaining at T4 was measured by dividing the final ash-free dry mass (AFDM) of leaves by their initial AFDM. Both final and initial ( $n=5$ ) organic matter contents were determined on 500 mg portions of ground samples ashed at 550 °C for 4 h.

**Fungal biomass** was estimated on five frozen-dried leaf disks (12 mm diameter) per leaf sample, using ergosterol contents (Gessner & Chauvet, 1993). Ergosterol was extracted and partially purified by solid-phase extraction, then separated and quantified using HPLC. Treatment effects on remaining leaf AFDM and leaf-associated fungal biomass (expressed as ergosterol per leaf AFDM) were assessed using an analysis of variance (ANOVA) test (SigmaPlot, Version 12.0 Software, Systat Software Inc., San Jose, CA).

**Effects on bacterial communities.** Toxicity on bacterial communities was assessed by denaturing gradient gel electrophoresis (DGGE) analysis as described in Clivot et al. (2012). Pelagic microorganisms were sampled every week by water filtration (total volume of 100 ml, filtered at 0.45 µm). Detailed information on DNA extraction and DGGE analysis procedures are provided in Supplementary Material.

**Toxicity on chironomid larvae.** Larval growth was determined at T4 by measuring body length (ImageJ® software). Organism sizes were compared with a Kruskal–Wallis test followed by Dunn's test to analyze differences between groups (SigmaPlot, Version 12.0 Software).

## Results

### Mesocosm experiment

#### *Physico-chemical parameters of the water column*

Variation curves are presented in Supplemental Figure S1 (Supplementary Material). pH values were comprised between 8.0 and 8.7 with a slight increase at the beginning of the experiment. A peak in oxygen rate was also observed at this period and then values decreased and stabilized at approximately 90–120% of saturation. In contrast, redox potential slightly decreased at the beginning of the experiment and quickly stabilized at approximately 320 mV. Finally, conductivity slightly increased over time, with values ranging from 200 to 230 µS/cm. No significant variations were observed between conditions, except for pH with the first input of NPs: a slight decrease (from 8.5 to 7.7) was observed in the contaminated condition. However, a quick recovery was observed and no significant differences with control were recorded until the end of the experiment. At T0 (first NP introduction) and until the end of the exposure,  $\text{NO}_3^-$ ,  $\text{NO}_2^-$  and  $\text{NH}_4^+$  concentrations were at the lowest detectable values (0, <0.3 and 0 mg/L, respectively). No significant differences in DOC contents in water were observed between conditions ( $p < 0.05$ ), with mean values of  $2.9 \pm 0.3$  and  $3.4 \pm 0.2$  mg/L for control and contaminated condition, respectively.

#### *Ce concentrations in water and sediment*

Ce concentration in the water column increased over time to reach  $35 \pm 8$  µg/L (3.5% of total Ce introduced) at T4 (Figure 4A). The fraction of dissolved Ce represented 2.6% of total Ce in water at this time. Mean Ce concentration in the first cm of sediment was  $5.5 \pm 2.2$  mg/kg, with most of the Ce (60%) found in the first mm (Figure 4B).

#### *Leaf litter and microorganisms*

Bacterial community structure distances indicated differences among communities in control and NP conditions, from the third week of contamination (Figure 5). ANOSIM performed on the DGGE profiles confirmed that bacterial communities from NP condition were different from those of control condition, with more pronounced effects being observed at the end of the experiment. No significant differences between conditions ( $p > 0.05$ ) were observed in both the percentage of leaf AFDM remaining ( $12.0 \pm 0.1$  and  $11.9 \pm 0.2\%$  for control and NP conditions, respectively; Supplemental Figure S2) and leaf-associated fungal biomass ( $28.7 \pm 8.0$  and  $44.2 \pm 12.8$  mg/g for control and NP conditions, respectively; Supplemental Figure S3) at the end of the experiment.

Figure 4. Ce concentrations (A) in the water column, at different sampling times and (B) in the sediment at T4. Data are corrected from background concentrations determined in control mesocosm.

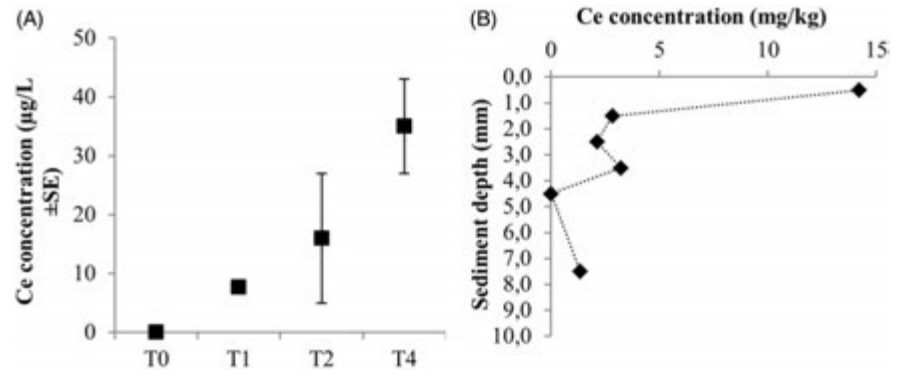
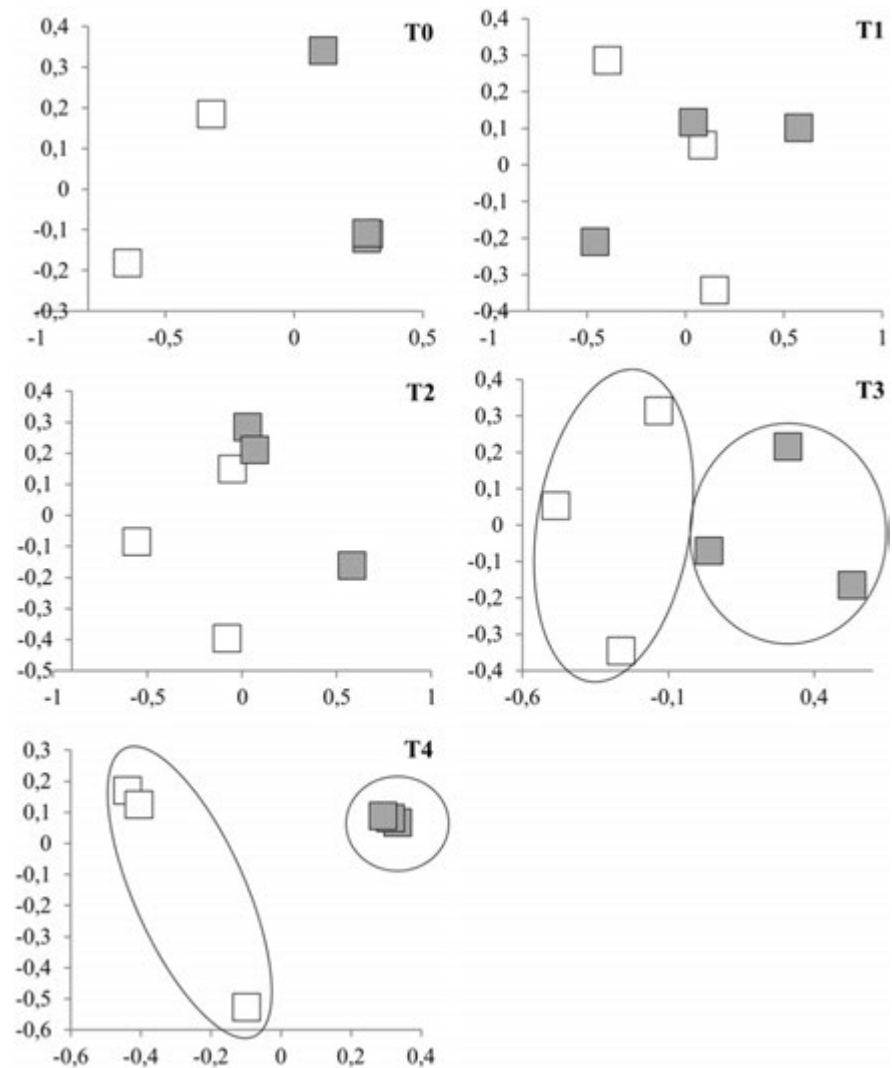


Figure 5. NMDS plots of DGGE pelagic bacterial community profiles from control (white squares) and NP (grey squares) conditions, before the first NP addition (T0) and after 1, 2, 3 and 4 weeks (T1, T2, T3 and T4, respectively) of contamination.



#### Chironomids

Less than 50 larvae remained at the end of the experiment in both conditions, with no significant difference between conditions. Growth assessment on remaining larvae showed no difference between conditions, with mean sizes of  $11.4 \pm 0.2$  and  $11.5 \pm 0.2$  mm for control and NP conditions, respectively (Supplemental Figure S4). Ce quantification indicated substantial NP accumulation in chironomid larvae, with  $265.8 \pm 14.1$  mg/kg of dry body weight. No Ce was detected in control groups.

#### Pleurodeles

Significant mortality ( $35.3 \pm 6.8\%$ ) was observed in NP condition, whereas no mortality occurred in control groups. Moreover, visual observation indicated that contrary to control conditions, surviving larvae in NP condition exhibited a strong disturbance of general health (no hunting behavior or response to mechanical stimulation). Therefore, genotoxicity was not assessed for this experiment because of the high level of intoxication of *Pleurodeles* larvae. TEM investigation performed on gills and

intestine did not allow NP internalization to be observed; no NPs were observed inside the gills or across the intestinal epithelium. However, Ce quantification in *Pleurodeles* larvae indicated significant NP accumulation, with a Ce mean concentration of  $13.5 \pm 3.9$  mg/kg of dry body weight (Figure 6 and Table 1). No Ce was detected in control groups.

### Nanoparticles

Water was sampled at the end of the exposure (10 cm below the water surface) and analyzed by TEM-EDX to determine NP size. While NPs in stock suspension are large (8–61 nm, median size of 25 nm; see Figure 7 for size distribution) with multiple edges (Figure 8A), NPs at the end of mesocosm exposure were significantly smaller (<4 nm, Figures 7 and 8E–G).

### Direct exposure in standardized conditions

No toxicity was observed in *Pleurodeles* larvae exposed to CeO<sub>2</sub> NPs via the water column. No mortality was recorded and no significant genotoxicity was observed at any of the concentrations tested (Figure 9). NP accumulation in larvae was observed for

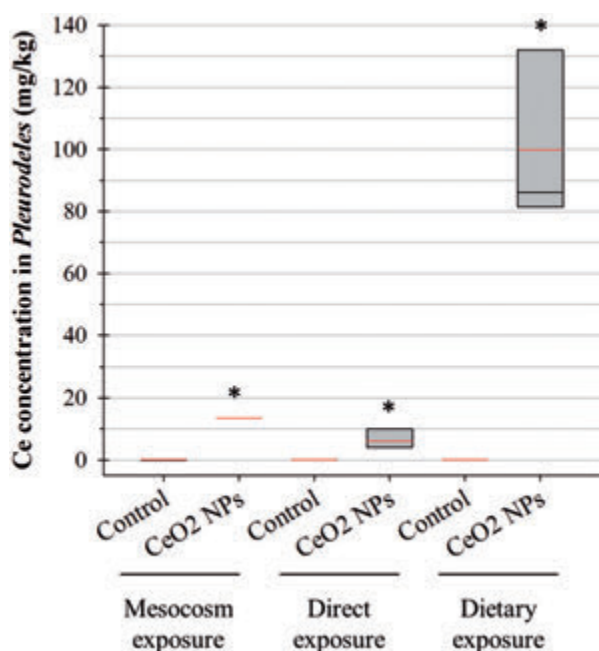


Figure 6. Value distribution of Ce concentrations in *P. waltl.* larvae, for different methods of exposure at similar concentrations. For direct exposure, selected data correspond to the initial concentration of 1.4 mg/L. Box plots show the medians, 10, 25, 75 and 90th percentiles. Red lines show mean values. \*Significantly different from control.

every concentration tested with Ce concentrations ranging from 1.21 to 6.11 mg/kg of dry body weight (Figure 6 and Supplemental Figure S5).

### Dietary exposure

Important NP accumulation was observed in chironomid larvae, with a mean Ce concentration of  $445 \pm 137$  mg/kg of dry body weight. Visual observation showed that chironomid larvae were ingested quickly (<30 min), and Ce was not detected in the *Pleurodeles* water exposure before renewal.

An important NP accumulation was observed in *Pleurodeles* larvae, with a mean Ce concentration of  $99.9 \pm 16.1$  mg/kg of dry body weight (Figure 6 and Table 1). Despite this significant NP accumulation, neither mortality nor genotoxicity were observed for *Pleurodeles*.

TEM observation of larvae intestine showed no evidence of NP absorption through intestinal epithelium: as for mesocosm exposure, no NP was observed to cross the epithelium.

### Discussion

To date, few studies on NPs have been performed in complex exposure systems. Among them, studies on species at different trophic levels are scarce (Auffan et al., 2014; Ferry et al., 2009; Kulacki et al., 2012; Zhang et al., 2012a). This study investigates the toxicity of CeO<sub>2</sub> NPs in mesocosms, on species representative of three different trophic levels: litter and microbial communities as primary producers/consumers, chironomid larvae as primary consumers and the predator *Pleurodeles* larvae as secondary consumers. Severe toxicity was observed on *Pleurodeles*, leading to investigations of different parameters possibly involved in NP toxicity mechanisms.

### Indirect effects due to system functioning

The experimental trophic chain studied (Figure 2) has been designed to be self-sufficient over the entire experiment. However, impacts on primary producers or consumers could alter this balance. First, biofilm observation indicated that it was well-developed in both conditions until amphibian introduction. Moreover, chironomid larvae had almost reached their maximum size (12–14 mm) at the end of the experiment, even in the presence of NPs, indicating enough food supply for these organisms. Changes observed in bacterial communities could have induced disturbances in the nitrogen cycle and the production of highly toxic compounds, such as NO<sub>2</sub><sup>-</sup>, but measurement of nitrogen compounds in mesocosms did not reveal any changes.

Moreover, our results showed that CeO<sub>2</sub> NPs did not alter the activity of leaf decomposers, i.e. microorganisms and chironomid larvae, and the rate of leaf decomposition.

Table 1. Toxicity and NP accumulation in *P. waltl.* larvae observed for different exposure methods.

	Mesocosm exposure	Direct exposure	Dietary exposure
Toxicity on <i>Pleurodeles</i>	$35.3 \pm 6.8\%$ mortality <sup>a</sup> Genotoxicity: <i>nd</i> <sup>b</sup>	No mortality No genotoxicity	No mortality No genotoxicity
Ce concentration in <i>Pleurodeles</i> (mg/kg) <sup>a</sup>	$13.5 \pm 3.9$	$6.1 \pm 2.0$	$99.9 \pm 16.1$

<sup>a</sup>Mean values  $\pm$  standard error.

<sup>b</sup>Not determined.



Leaf litter decomposition results in the formation and release of fine particulate organic matter that can interact with NPs and stabilize them (Manier et al., 2011; Quik et al., 2010). It could be hypothesized that organic compounds potentially toxic are also released in the water column due to litter decomposition, even though the amount of leaf litter was relatively low. An increase in litter decomposition could have thus led to potentially harmful effects. However, the absence of significant differences in litter decomposition between conditions, in accordance with the similar DOC content in water, indicates that the observed toxicity on *Pleurodeles* is not directly related to the detrital food web.

Finally, chironomid larvae were not impacted by NPs. Very few chironomid larvae remained at the end of the experiment (<50 over 700) and no emergence was observed (i.e. chironomids stayed under larval form and did not leave the water column). Previous studies on *C. riparius* (Bour et al., 2015) showed that the CeO<sub>2</sub> NPs did not induce mortality on this species at a broad range of concentrations (0.01–100 mg/L). This indicates that the high number of missing larvae is most likely due to predation by the amphibians rather than mortality due to NPs. The study of larval growth also showed that chironomids almost reached their maximum size (12–14 mm). Altogether, these results indicate that the toxicity observed on *Pleurodeles* is not likely to be due to a lack of food, compared to control conditions.

### Implication of different routes of exposure

In mesocosms, *Pleurodeles* are likely to be exposed to NPs via two pathways: direct exposure from water column and dietary exposure via contaminated chironomids. Parallel experiments conducted on *Pleurodeles* allow better understanding of the implications for these two routes of exposure in the toxicity observed in mesocosms.

#### Direct exposure

The absence of toxicity observed in this experiment indicates that direct exposure to CeO<sub>2</sub> NPs is not likely to be a major source of toxicity to *Pleurodeles*, at least in these exposure conditions. Indeed, as standardized and mesocosm exposure conditions are completely different, results cannot be directly extrapolated from an experiment to the other and are rather indicative of a general mechanism of action of CeO<sub>2</sub> NPs.

#### Dietary exposure

The rapid ingestion of chironomid larvae suggests that they are not likely to depurate, the contact time with non-contaminated

water being very short. This is confirmed by the Ce concentrations in the water below the detection limits, besides indicating that Ce is not released in the water by *Pleurodeles* either. These results confirm that *Pleurodeles* exposure occurred only via trophic route during this experiment. Moreover, the important NP concentration measured in the larvae after depuration indicates that CeO<sub>2</sub> NPs are accumulated when ingested. The absence of toxicity on *Pleurodeles* larvae during this experiment indicates that trophic route does not play a major role in the toxicity of CeO<sub>2</sub> NPs on this species, despite the observed accumulation.

These experiments and the associated absence of toxicity on *Pleurodeles* indicate that the toxicity observed in mesocosm cannot be entirely explained by direct exposure or dietary exposure to CeO<sub>2</sub> NPs, considered independently.

### Role of NP accumulation

The three exposure methods presently studied at comparable concentrations (1 mg/L for mesocosm and dietary exposure; 1.4 mg/L for direct exposure) induced variable NP accumulation in *Pleurodeles*, with dietary exposure resulting in the most significant accumulation. However, accumulation values should not be compared between experiments as *Pleurodeles* exposure to NPs varied importantly. Indeed, the average number of chironomid larvae available per *Pleurodeles* was different between dietary and mesocosm exposure (96 and 38, respectively) and NP accumulation in chironomid larvae also varied between conditions (445 and 265.8 mg/kg for dietary and mesocosm exposure, respectively).

However, comparing the effects observed during the different exposure highlights that toxicity is not correlated with CeO<sub>2</sub> NP accumulation, as shown in Table 1. Indeed, no toxicity occurred with the extremely high NP concentration of ~100 mg/kg of dry body weight in *Pleurodeles*, but mortality was observed at the intermediate accumulation value (13.5 mg/kg), in mesocosm experiment. This result is in accordance with previous studies that underline that no direct relationship exists between NP bioaccumulation and toxicity (Buffet et al., 2013a; Jackson et al., 2012).

### Nano-bio and bio-nano interactions

Nanoparticles interact with their environment and can be modified on contact with complex matrices (Wiesner et al., 2011). Lowry et al. (2012) report chemical modifications of Ag NPs in long-term mesocosm exposure. Similarly, biotransformation of CeO<sub>2</sub> NPs was observed in contact with plant systems

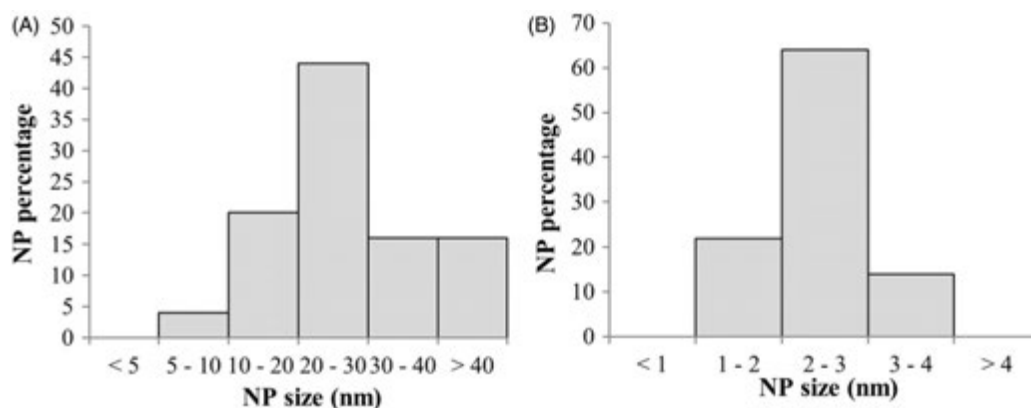
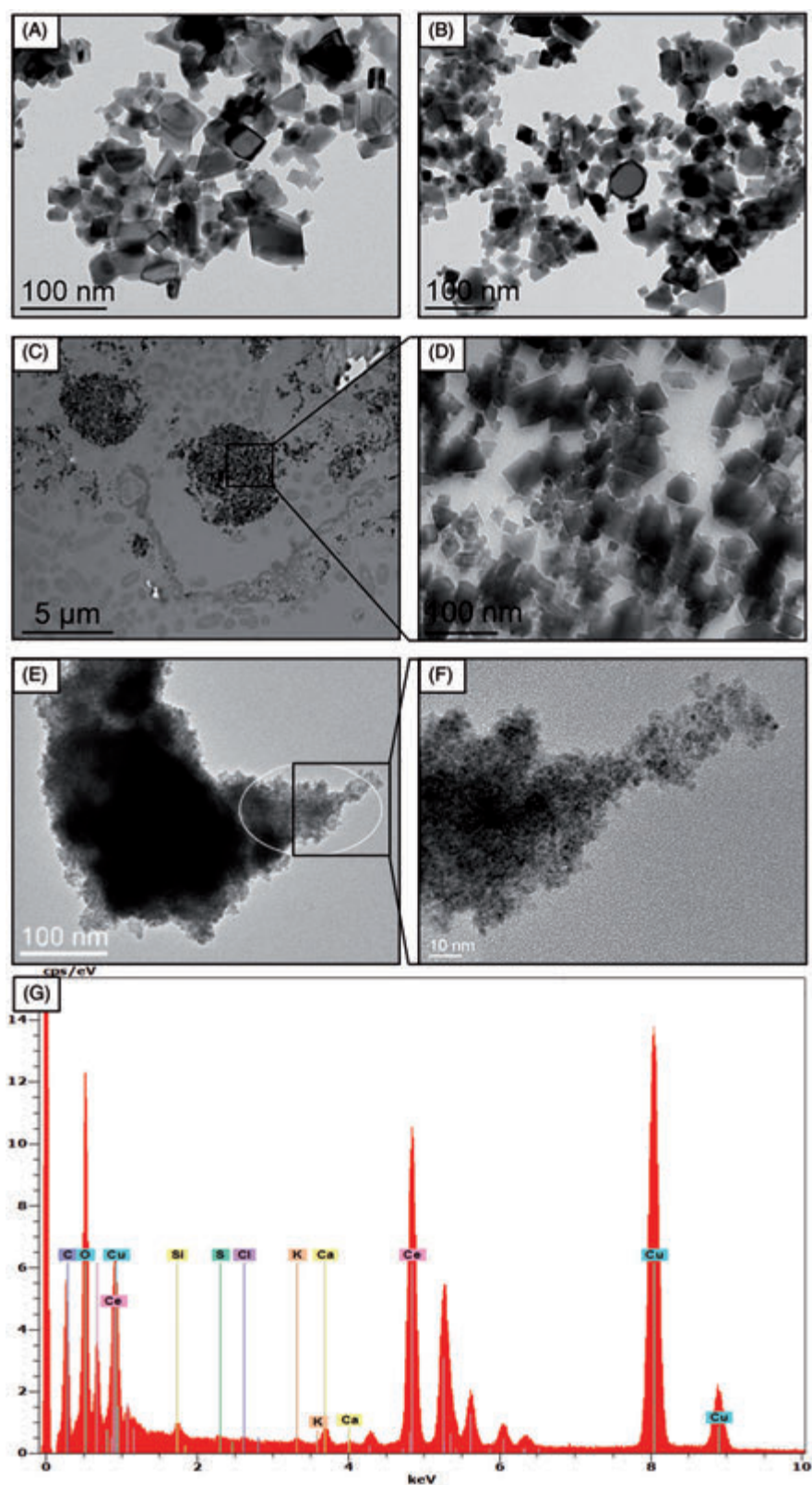


Figure 7. NP size distributions (A) in stock suspension at T0 and (B) in mesocosm water column at T4. NP size is determined from TEM pictures (ImageJ® software), on a total sample of 100 NP per condition.

Figure 8. Transmission electron microscopy (TEM) coupled to Energy Dispersive X-ray microscopy (EDX) analysis of CeO<sub>2</sub> NPs (A) in stock suspension, (B) in direct exposure medium, after 24 h of exposure (before renewal), (C, D) in chironomid larvae intestine after 48 h of exposure (dietary exposure) and (E, G) in mesocosm exposure medium, at the end of the experiment. (G) EDX analysis of sample from mesocosm exposure, performed in the zone indicated by a white circle in E. Cu spike corresponds to the copper grid.



(Zhang et al., 2012b). In this study, CeO<sub>2</sub> NPs were found to undergo morphological changes in mesocosm exposure, with important size decrease (Figure 7) and erosion of NP edges, indicating mass loss. The most abundant elements detected by EDX analyses on MET observations were Ce and O, while P was not detected (Figure 8G). These results support the presence of CeO<sub>2</sub> NPs instead of CePO<sub>4</sub> mineral phases. It has been reported

that NPs with rough surfaces, corners and edges can be biologically and chemically highly reactive (George et al., 2012; Pelletier et al., 2010). In the present mesocosm experiment, chemical reactions may have occurred at the numerous contact points from NP edges, resulting in edges erosion, size decrease and the release of ionic forms of Ce (2.6% of total Ce in the column water at the end of the experiment). This could explain

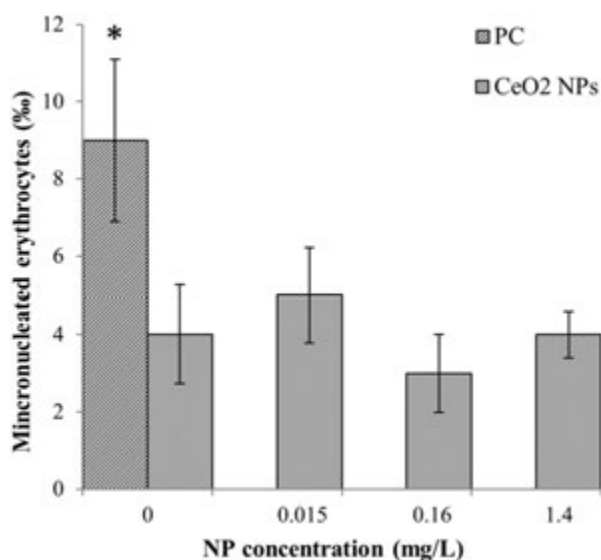


Figure 9. Genotoxicity on *P. waltl.* larvae directly exposed to CeO<sub>2</sub> NPs. Error bars show the 95% confidence interval of median values. PC: positive control. \*Significantly different from control.

that the CeO<sub>2</sub> NPs studied, initially large (up to 60 nm) and non-spherical, were found to be significantly smaller (<5 nm) and spherical at the end of the experiment.

As shown in Figure 8, NP morphological changes were not observed in exposure medium of standardized exposure or in chironomid larvae gut during dietary exposure. The presence of microbial communities in mesocosms may have an important role in NP modifications. Indeed, several studies reported interactions between CeO<sub>2</sub> NPs and microbial species (Fang et al., 2010; Manier et al., 2013; Thill et al., 2006; Zeyons et al., 2009). Other NP modifications can also occur in complex matrices due to the presence of many biological molecules (Nel et al., 2009) and these ‘‘nano-bio’’ interactions can have different impacts in terms of toxicity.

First, NP interaction with microbial species could result in indirect toxicity for other species due to toxin production. Indeed, fungi produce many secondary metabolites, especially as a defense against predators (Arsuffi & Suberkropp, 1989). Similarly, Thill et al. (2006) suggested that the presence of molecules excreted by the bacteria prevented the direct contact between CeO<sub>2</sub> NPs and the biological membranes, reducing the cytotoxicity. In this experiment, the observed changes in bacterial communities could have led to the predominance of bacterial species potentially harmful for *Pleurodeles*. Bacterial communities could also have reacted to CeO<sub>2</sub> NPs and released toxic organic molecules in the water. Similarly, even though fungal biomasses did not differ between conditions, it cannot be excluded that they produced mycotoxins in reaction to NPs. It thus can be hypothesized that such molecules could be the cause of the acute toxicity observed on *Pleurodeles* larvae in mesocosm.

A second hypothesis to explain the toxicity observed in mesocosm relates to NP speciation and dissolution. Unlike ZnO or Ag NPs, CeO<sub>2</sub> NP dissolution is generally considered negligible (Manier et al., 2013; Rogers et al., 2010). However, Zhang et al. (2012b) observed CeO<sub>2</sub> NP biotransformation in plant systems, attributed to biogenic reducing substances and organic acids. They suggest that NPs are partially dissolved by organic substances and that the resulting Ce<sup>3+</sup> ions are precipitated on root surfaces or form CePO<sub>4</sub> or Ce-carboxyl compounds complexes. Furthermore, Thill et al. (2006) observed CeO<sub>2</sub> NP reduction in the presence of bacteria. Bioturbation may

also impact the distribution and speciation of metallic contaminants (Lagauzère et al., 2009). In this study, it thus could be hypothesized that the presence of microbial communities or chironomids in mesocosm induces CeO<sub>2</sub> NP reduction, leading to Ce<sup>3+</sup> release in the water column. Despite the rather low dissolved fraction of Ce measured in the water column, the observation of NP morphological changes and mass loss in mesocosm strongly supports the hypothesis of NP dissolution. Zeyons et al. (2009) suggest that soluble Ce<sup>3+</sup> ions present in NP suspension could partly be the cause of the toxicity observed on the cyanobacteria *Synechocystis* PCC6803 exposed to CeO<sub>2</sub> NPs. Therefore, although the initial CeO<sub>2</sub> NP form is not toxic, as suggested by the absence of toxicity in other experimental conditions, ionic or complexed forms potentially present in mesocosms could be toxic to *Pleurodeles*.

## Conclusions

Mesocosm exposure to CeO<sub>2</sub> NPs led to different responses depending on the organisms. No effects were observed on litter decomposition or on the associated fungal biomass, but changes in bacterial communities were observed from the third week of NP contamination. No effects were reported on chironomid larvae, despite a significant NP accumulation. The most severe toxicity was observed on *Pleurodeles* larvae, with a significant mortality in the presence of NPs. This toxicity on *Pleurodeles* was not observed in other exposure conditions: No toxicity was recorded on larvae directly exposed to NPs or via the trophic route. Moreover, no correlation between NP bioaccumulation and toxicity was observed. This suggests that complex phenomena occur in mesocosms and modulate NP toxicity. Different mechanisms are suggested: (i) CeO<sub>2</sub> NPs in mesocosms could lead to indirect effects on *Pleurodeles* through microorganism reaction to CeO<sub>2</sub> NPs and (ii) NP dissolution could have occurred in mesocosms, following changes in Ce speciation, leading to toxic compounds.

This study allowed validation of the feasibility of the simple carnivorous trophic chain ‘‘chironomid larvae – *Pleurodeles* larvae’’, with CeO<sub>2</sub> NP transfer from prey to predator. This study also enabled validation of the whole functioning of the complex system studied in mesocosms. Indeed, this system comprising species at different trophic levels has proven to be self-sufficient over a long exposure time, with CeO<sub>2</sub> NP transfer along the whole trophic chain. This complex system allowed detecting effects that could not be observed with standardized assays. Studies at intermediate size scales, as with these small size indoor mesocosms, are therefore crucial in the field of nano-ecotoxicology as they enable investigations on toxicity mechanisms in complex systems, while controlling certain biotic and abiotic parameters.

## Acknowledgements

Thanks to Umicore company for providing CeO<sub>2</sub> NPs. The authors also thank Sophie Caissaignon and Corinne Chaneac (Collège de France, Paris, France) for CeO<sub>2</sub> NP characterization and Sylvain Lamothe for his helpful technical assistance. The authors also thank the CNRS for funding the GDRi iCEINT. The English language of the manuscript has been corrected by an English language editing company.

## Declaration of interest

This study was conducted in the frame of the ANR-10-NANO-0006/MESONNET project, funded by the French National Research Agency (ANR). The authors report no conflict of interest. The authors alone are responsible for the content and writing of the paper.



## References

- AFNOR. 2004. XP T 90-339-1. Détermination de la Toxicité des Sédiments vis-à-vis de *Chironomus riparius*. France: AFNOR.
- Arsuffi TL, Suberkropp K. 1989. Selective feeding by shredders on leaf-colonizing stream fungi: comparison of macroinvertebrate taxa. *Oecologia* 79:30–7.
- Auffan M, Tella M, Santaella C, Brousset L, Paillès C, Barakat M, et al. 2014. An adaptable mesocosm platform for performing integrated assessments of nanomaterial risk in complex environmental systems. *Sci Rep* 4:5608. doi: 10.1038/srep05608.
- Bour A, Mouchet F, Verneuil L, Evariste L, Silvestre J, Pinelli E, Gauthier L. 2015. Toxicity of CeO<sub>2</sub> nanoparticles at different trophic levels – effects on diatoms, chironomids and amphibians. *Chemosphere* 120:230–6.
- Buffet P-E, Pan J-F, Poirier L, Amiard-Triquet C, Amiard J-C, Gaudin P, et al. 2013a. Biochemical and behavioural responses of the endobenthic bivalve *Scrobicularia plana* to silver nanoparticles in seawater and microalgal food. *Ecotoxicol Environ Saf* 89:117–24.
- Buffet P-E, Richard M, Caupos F, Vergnoux A, Perrein-Ettajani H, Luna-Acosta A, et al. 2013b. A mesocosm study of fate and effects of CuO nanoparticles on endobenthic species (*Scrobicularia plana*, *Hediste diversicolor*). *Environ Sci Technol* 47:1620–8.
- Cleveland D, Long SE, Pennington PL, Cooper E, Fulton MH, Scott GI, et al. 2012. Pilot estuarine mesocosm study on the environmental fate of Silver nanomaterials leached from consumer products. *Sci Total Environ* 421–422:267–72.
- Clivot H, Pagnout C, Aran D, Devin S, Bauda P, Poupin P, Guérolf F. 2012. Changes in soil bacterial communities following liming of acidified forests. *Appl Soil Ecol* 59:116–23.
- Colman BP, Espinasse BP, Richardson CJ, Matson CW, Lowry G, Hunt D, et al. 2014. Emerging contaminant or an old toxin in disguise? Silver nanoparticle impacts on ecosystems. *Environ Sci Technol* 48:5229–36.
- Djomo JE, Ferrier V, Békaert C. 2000. Amphibian micronucleus test in vivo (Jaylet test) to evaluate the genotoxicity of petrochemical waste waters. *Bull Environ Contam Toxicol* 65:168–74.
- Fang X, Yu R, Li B, Somasundaran P, Chandran K. 2010. Stresses exerted by ZnO, CeO<sub>2</sub> and anatase TiO<sub>2</sub> nanoparticles on the *Nitrosomonas europaea*. *J Colloid Interface Sci* 348:329–34.
- Fernandez M, L'Haridon J, Gauthier L, Zoll-Moreux C. 1993. Amphibian micronucleus test(s): a simple and reliable method for evaluating in vivo genotoxic effects of freshwater pollutants and radiations. Initial assessment. *Mutat Res Mutagen Relat Subj* 292:83–99.
- Ferry JL, Craig P, Hexel C, Sisco P, Frey R, Pennington PL, et al. 2009. Transfer of gold nanoparticles from the water column to the estuarine food web. *Nat Nanotechnol* 4:441–4.
- Gallien L, Durocher M. 1957. Table chronologique du développement chez *Pleurodeles wallii* Michah. *Bull Biol Fr Belg* 91:97–114.
- García A, Espinosa R, Delgado L, Casals E, González E, Puentes V, et al. 2011. Acute toxicity of cerium oxide, titanium oxide and iron oxide nanoparticles using standardized tests. *Desalination* 269:136–41.
- George S, Lin S, Ji Z, Thomas CR, Li L, Mecklenburg M, et al. 2012. Surface defects on plate-shaped silver nanoparticles contribute to its hazard potential in a fish gill cell line and zebrafish embryos. *ACS Nano* 6:3745–59.
- Gessner MO, Chauvet E. 1993. Ergosterol-to-biomass conversion factors for aquatic hyphomycetes. *Appl Environ Microbiol* 59:502–7.
- Huang H-C, Barua S, Sharma G, Dey SK, Rege K. 2011. Inorganic nanoparticles for cancer imaging and therapy. *J Control Release* 155:344–57.
- ISO 21427-1. 2006. Evaluation of Genotoxicity by Measurement of the Induction of Micronuclei. Part 1: Evaluation of Genotoxicity using Amphibian Larvae. Geneva: ISO.
- Jabiol J, McKie BG, Bruder A, Bernadet C, Gessner MO, Chauvet E. 2013. Trophic complexity enhances ecosystem functioning in an aquatic detritus-based model system. *J Anim Ecol* 82:1042–51.
- Jackson BP, Bugge D, Ranville JF, Chen CY. 2012. Bioavailability, toxicity, and bioaccumulation of quantum dot nanoparticles to the amphipod *Leptocheirus plumulosus*. *Environ Sci Technol* 46:5550–6.
- Jemec A, Djinović P, Tišler T, Pintar A. 2012. Effects of four CeO<sub>2</sub> nanocrystalline catalysts on early-life stages of zebrafish *Danio rerio* and crustacean *Daphnia magna*. *J Hazard Mater* 219–220:213–20.
- Kulacki KJ, Cardinale BJ, Keller AA, Bier R, Dickson H. 2012. How do stream organisms respond to, and influence, the concentration of titanium dioxide nanoparticles? A mesocosm study with algae and herbivores. *Environ Toxicol Chem SETAC* 31:2414–22.
- Lagauzère S, Boyer P, Stora G, Bonzom J-M. 2009. Effects of uranium-contaminated sediments on the bioturbation activity of *Chironomus riparius* larvae (Insecta, Diptera) and *Tubifex tubifex* worms (Annelida, Tubificidae). *Chemosphere* 76:324–34.
- Lee S-W, Kim S-M, Choi J. 2009. Genotoxicity and ecotoxicity assays using the freshwater crustacean *Daphnia magna* and the larva of the aquatic midge *Chironomus riparius* to screen the ecological risks of nanoparticle exposure. *Environ Toxicol Pharmacol* 28:86–91.
- Lowry GV, Espinasse BP, Badireddy AR, Richardson CJ, Reinsch BC, Bryant LD, et al. 2012. Long-term transformation and fate of manufactured Ag nanoparticles in a simulated large scale freshwater emergent wetland. *Environ Sci Technol* 46:7027–36.
- Manier N, Bado-Nilles A, Delalain P, Aguerre-Chariol O, Pandard P. 2013. Ecotoxicity of non-aged and aged CeO<sub>2</sub> nanomaterials towards freshwater microalgae. *Environ Pollut* 180:63–70.
- Manier N, Garaud M, Delalain P, Aguerre-Chariol O, Pandard P. 2011. Behaviour of ceria nanoparticles in standardized test media – influence on the results of ecotoxicological tests. *J Phys Conf Ser* 304:012058.
- Mouchet F, Landois P, Datsyuk V, Puech P, Pinelli E, Flahaut E, Gauthier L. 2011. International amphibian micronucleus standardized procedure (ISO 21427-1) for in vivo evaluation of double-walled carbon nanotubes toxicity and genotoxicity in water. *Environ Toxicol* 26:136–45.
- Nel AE, Mädler L, Velegol D, Xia T, Hoek EMV, Somasundaran P, et al. 2009. Understanding biophysicochemical interactions at the nano–bio interface. *Nat Mater* 8:543–57.
- OECD. 2010. List of Manufactured Nanomaterials and List of Endpoints for Phase One of the Sponsorship Programme for the Testing of Manufactured Nanomaterials: Revision. Series on the Safety of Manufactured Nanomaterials No. 27. Paris: Organisation for Economic Co-operation and Development.
- Pelletier DA, Suresh AK, Holton GA, McKeown CK, Wang W, Gu B, et al. 2010. Effects of engineered cerium oxide nanoparticles on bacterial growth and viability. *Appl Environ Microbiol* 76:7981–9.
- Piccinno F, Gottschalk F, Seeger S, Nowack B. 2012. Industrial production quantities and uses of ten engineered nanomaterials in Europe and the world. *J Nanoparticle Res* 14:1–11.
- Quik JTK, Lynch I, Van Hoecke K, Miermans CJH, De Schampelaere KAC, Janssen CR, et al. 2010. Effect of natural organic matter on cerium dioxide nanoparticles settling in model fresh water. *Chemosphere* 81:711–15.
- Rao CNR, Cheetham AK. 2001. Science and technology of nanomaterials: current status and future prospects. *J Mater Chem* 11:2887–94.
- Rogers NJ, Franklin NM, Apte SC, Batley GE, Angel BM, Lead JR, Baalousha M. 2010. Physico-chemical behaviour and algal toxicity of nanoparticulate CeO<sub>2</sub> in freshwater. *Environ Chem* 7:50.
- Roh J-Y, Park Y-K, Park K, Choi J. 2010. Ecotoxicological investigation of CeO<sub>2</sub> and TiO<sub>2</sub> nanoparticles on the soil nematode *Caenorhabditis elegans* using gene expression, growth, fertility, and survival as endpoints. *Environ Toxicol Pharmacol* 29:167–72.
- Schierz A, Espinasse B, Wiesner MR, Bisesi JH, Sabo-Attwood T, Ferguson PL. 2014. Fate of single walled carbon nanotubes in wetland ecosystems. *Environ Sci Nano* 1:574–83.
- Tella M, Auffan M, Brousset L, Issartel J, Kieffer I, Pailles C, et al. 2014. Transfer, transformation, and impacts of ceria nanomaterials in aquatic mesocosms simulating a pond ecosystem. *Environ Sci Technol* 48:9004–13.
- The Royal Society. 2004. Nanoscience and Nanotechnologies: Opportunities and Uncertainties. London: The Royal Society.
- Thill A, Zeyons O, Spalla O, Chauvat F, Rose J, Auffan M, Flank AM. 2006. Cytotoxicity of CeO<sub>2</sub> nanoparticles for *Escherichia coli*. Physico-chemical insight of the cytotoxicity mechanism. *Environ Sci Technol* 40:6151–6.



- Wiesner MR, Lowry GV, Casman E, Bertsch PM, Matson CW, Di Giulio RT, et al. 2011. Meditations on the ubiquity and mutability of nano-sized materials in the environment. *ACS Nano* 5:8466–70.
- Wiesner MR, Lowry GV, Jones KL, Hochella J, Michael F, Di Giulio RT, et al. 2009. Decreasing uncertainties in assessing environmental exposure, risk, and ecological implications of nanomaterials. *Environ Sci Technol* 43:6458–62.
- Zeyons O, Thill A, Chauvat F, Menguy N, Cassier-Chauvat C, Oréar C, et al. 2009. Direct and indirect CeO<sub>2</sub> nanoparticles toxicity for *Escherichia coli* and *Synechocystis*. *Nanotoxicology* 3:284–95.
- Zhang H, He X, Zhang Z, Zhang P, Li Y, Ma Y, Kuang Y, et al. 2011. Nano-CeO<sub>2</sub> exhibits adverse effects at environmental relevant concentrations. *Environ Sci Technol* 45:3725–30.
- Zhang P, He X, Ma Y, Lu K, Zhao Y, Zhang Z. 2012a. Distribution and bioavailability of ceria nanoparticles in an aquatic ecosystem model. *Chemosphere* 89:530–5.
- Zhang P, Ma Y, Zhang Z, He X, Zhang J, Guo Z, et al. 2012b. Biotransformation of ceria nanoparticles in cucumber plants. *ACS Nano* 6:9943–50.

**Supplementary material available online**  
Supplementary Figures S1–S5