



**HAL**  
open science

# On the controllability of the Navier-Stokes equation in spite of boundary layers

Jean-Michel Coron, Frédéric Marbach, Franck Sueur

► **To cite this version:**

Jean-Michel Coron, Frédéric Marbach, Franck Sueur. On the controllability of the Navier-Stokes equation in spite of boundary layers. *Mathematical Analysis of Viscous Incompressible Fluid*, Nov 2016, Kyoto, Japan. pp.162-180. hal-01492722

**HAL Id: hal-01492722**

**<https://hal.science/hal-01492722>**

Submitted on 27 May 2017

**HAL** is a multi-disciplinary open access archive for the deposit and dissemination of scientific research documents, whether they are published or not. The documents may come from teaching and research institutions in France or abroad, or from public or private research centers.

L'archive ouverte pluridisciplinaire **HAL**, est destinée au dépôt et à la diffusion de documents scientifiques de niveau recherche, publiés ou non, émanant des établissements d'enseignement et de recherche français ou étrangers, des laboratoires publics ou privés.

# On the controllability of the Navier-Stokes equation in spite of boundary layers

by

Jean-Michel CORON, Frédéric MARBACH and Franck SUEUR

## Abstract

In this proceeding we expose a particular case of a recent result obtained in [6] by the authors regarding the incompressible Navier-Stokes equations in a smooth bounded and simply connected bounded domain, either in 2D or in 3D, with a Navier slip-with-friction boundary condition except on a part of the boundary. This under-determination encodes that one has control over the remaining part of the boundary. We prove that for any initial data, for any positive time, there exists a weak Leray solution which vanishes at this given time.

## §1. Geometric setting

We consider a smooth bounded and simply connected<sup>1</sup> domain  $\Omega$  in  $\mathbb{R}^d$ , with  $d = 2$  or  $d = 3$ . Inside this domain, an incompressible viscous fluid evolves under the Navier-Stokes equations. We will name  $u$  its velocity field and  $p$  the associated pressure. The equations read:

$$(1.1) \quad \partial_t u + (u \cdot \nabla)u - \Delta u + \nabla p = 0 \quad \text{and} \quad \operatorname{div} u = 0 \quad \text{in } \Omega.$$

Let us emphasize that the fluid density and the viscosity coefficient are set equal to one for the sake of clarity.

## §2. Boundary conditions

For an impermeable wall, it is natural to prescribe the condition  $u \cdot n = 0$  on  $\partial\Omega$ , where  $n$  denotes the outward pointing normal to the domain, which means that the fluid cannot escape the domain and that there is no cavitation at the boundary. Indeed in the case of a perfect fluid, driven by the Euler equations rather than the

---

<sup>1</sup>Indeed our analysis also covers the case of a multiply connected domain for some controls located on a part of the boundary intersecting all its connected components, but we will stick here to this simple case and we refer to [6] for the general case.

Navier-Stokes, such a condition is sufficient to have existence and uniqueness to the Cauchy problem in various appropriate functional settings. For the case here of the Navier-Stokes equations, an extra condition has to be added. The two following propositions are the most used (in complement to the previous condition) :

- the no-slip condition  $[u]_{\text{tan}} = 0$  (dating back to Stokes in 1851), where

$$(2.1) \quad [u]_{\text{tan}} := u - (u \cdot n)n$$

denotes the tangential part of the vector field  $u$ .

- the slip-with-friction condition  $N(u) = 0$ , where

$$(2.2) \quad N(u) := [D(u)n + \alpha u]_{\text{tan}} \quad \text{with} \quad D(u) := \left( \frac{1}{2} (\partial_i u_j + \partial_j u_i) \right)_{1 \leq i, j \leq d}$$

the rate of strain tensor (or shear stress) and  $\alpha$  is a real constant coefficient for simplicity<sup>2</sup>. This condition dates back to Navier in 1833 (see [26]). This coefficient describes the friction near the boundary. Let us observe that, formally, when  $\alpha \rightarrow +\infty$ , the Navier condition reduces to the usual no-slip condition.

### §3. The Cauchy problem

Let us recall the following result, where  $L^2_\sigma(\Omega)$  denotes the closure in  $L^2(\Omega)$  of smooth divergence free vector fields which are tangent to  $\partial\Omega$ .

**Theorem 3.1.** *Let  $u_0 \in L^2_\sigma(\Omega)$ . Then there exists a global weak solution  $u$  associated with the initial data  $u_0$ .*

This result dates back to the pioneering work [21] by Leray where it is proved that  $u \in \mathcal{C}_w^0([0, +\infty); L^2_\sigma(\Omega)) \cap L^2((0, +\infty); H^1(\Omega))$ . Moreover, Leray proved the following partial regularity property: for almost every  $t$  in  $(0, +\infty)$ ,  $u(t, \cdot)$  is  $\mathcal{C}^\infty(\Omega)$ .

Even though Leray's paper tackled the case of the no-slip condition, this result can be adapted almost right away to the case of the Navier slip-with-friction condition (see [17, Section 3]).

### §4. The control problem

We now assume that we are able to act on a non-empty open part  $\Sigma$  of the full boundary  $\partial\Omega$ . In particular we may let some fluid enter into the domain and the same volume of fluid go out of the domain (recall that the fluid is incompressible). Then the setting we have in mind now is the following (see Figure 1).

---

<sup>2</sup>Our analysis also covers the case where  $\alpha$  is a smooth matrix-valued function.

- On the part  $\partial\Omega \setminus \Sigma$ , some boundary conditions are prescribed, either the no-slip condition  $u = 0$  or the Navier condition  $u \cdot n = 0$  and  $N(u) = 0$  (that is without any source terms or ability to modify the slip coefficient  $\alpha$  which is assumed to be given once and for all).
- On the part  $\Sigma$ , we are free to choose a boundary condition which is relevant for some purpose.

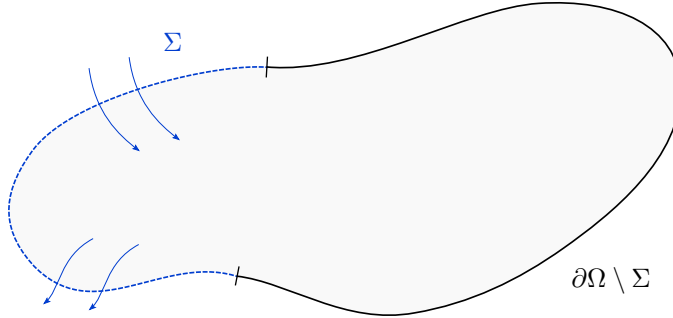


Figure 1. The control problem

More precisely we have in mind to drive the system from an arbitrary initial data to some given state at some given time. The following goal, first suggested by Jacques-Louis Lions in the late 80's (cf. for instance [22]) tackles the case where the target is the rest state.

**Open Problem (OP).** For any  $T > 0$  and  $u_0$  in  $L^2_\sigma(\Omega)$ , does there exist a solution to the Navier-Stokes system with  $u(0, \cdot) = u_0$  such that  $u(T, \cdot) = 0$  ?

Above the Navier-Stokes system to which (OP) refers is constituted of the incompressible Navier-Stokes equations (1.1) in  $\Omega$  and of the no-slip condition or the Navier condition on  $\partial\Omega \setminus \Sigma$ , but without any boundary condition prescribed on the controlled part  $\Sigma$  of the boundary. Such a system is therefore under-determined so that uniqueness of a solution is not expected (even in the 2D case for which uniqueness of Leray solutions is known in the uncontrolled setting corresponding to the case where  $\Sigma = \emptyset$ ). Indeed in the formulation above the control is implicit: a relevant condition to prescribe as a control on  $\Sigma$  can be recovered by taking the trace on  $\Sigma$  of a convenient solution to the under-determined system.

Observe that there is no restriction regarding the sizes neither of the time  $T > 0$  nor of the initial data  $u_0$  in  $L^2_\sigma(\Omega)$ . In the terminology of control theory a positive result to this question amounts to the small-time global controllability of

the Navier-Stokes, or more precisely the *small-time global exact null controllability* since the target in (OP) is the rest state and has to be reached exactly.

### §5. Our result

In Lions' original question, the boundary condition on the uncontrolled part  $\partial\Omega \setminus \Sigma$  of the boundary is the no-slip boundary condition. Our goal here is to present the following result establishing a positive answer to (OP) in the case where some Navier conditions are prescribed on  $\partial\Omega \setminus \Sigma$ .

**Theorem 5.1.** *Let  $T > 0$  and  $u_0 \in L^2_\sigma(\Omega)$ . There exists a weak solution  $u$  to*

$$(5.1) \quad \begin{cases} \partial_t u + (u \cdot \nabla)u - \Delta u + \nabla p = 0 & \text{in } \Omega, \\ \operatorname{div} u = 0 & \text{in } \Omega, \\ u \cdot n = 0 & \text{on } \partial\Omega \setminus \Sigma, \\ N(u) = 0 & \text{on } \partial\Omega \setminus \Sigma \end{cases}$$

satisfying  $u(0, \cdot) = u_0$  and  $u(T, \cdot) = 0$ .

Theorem 5.1 does not require any condition on the coefficient  $\alpha$  appearing in the definition (2.2) of  $N$ . Indeed, observe that there is no asymptotic parameter in the statement above. Still the next lines about the proof of it will be full of  $\varepsilon$ .

Let us also mention that the results in [6] are more general, in particular they prove that one may intercept at time  $T$  any smooth uncontrolled solution to the Navier-Stokes system with Navier condition on the full boundary  $\partial\Omega$ .

### §6. Earlier results

When Jacques-Louis Lions formulated it in the late 80's, (OP) was pretty impressive since the answer was not even known in the case of the heat equation. For this equation the first key breakthroughs were obtained by [20] and [19] thanks to Carleman inequalities respectively associated with parabolic and elliptic second order operators. The latter has been then extended to the Stokes equations and later on to the Navier-Stokes equations in the case of small initial data by Imanuvilov in [18]. The smallness assumption implies that the quadratic convective term may be seen as a perturbation term so that the result can be obtained from the controllability of the Stokes equations by a fixed point strategy. This result has since been improved in [7] by Fernández-Cara, Guerrero, Imanuvilov and Puel.

All these works deal with the case of the no-slip boundary condition. For Navier slip-with-friction boundary conditions, let us mention [14] and [16] which prove in particular local null controllability when the initial data is small.

The case of large initial data was first tackled in [3], where the first author proves a small-time global result in a 2D setting with Navier boundary conditions: the smallness obtained within the inside of the domain is good, but the estimates up to the boundary are not sufficient to conclude using a known local result. In fact, when there is no boundary, the first author and Fursikov prove in [5] a small-time global exact null controllability result (in this setting, the control is a source term located in a small subset of the domain) thanks to the return method and to the global controllability of the incompressible Euler equations (for large smooth initial data). Likewise, in [8], Fursikov and Imanuvilov prove small-time global exact null controllability when the control is supported on the whole boundary (i.e.  $\Gamma = \partial\Omega$ ). In [1], Chapouly obtains global exact null controllability for Navier-Stokes in a 2D rectangular domain under Lions' boundary condition (corresponding to the case where  $\alpha = 0$  in the Navier condition) on the uncontrolled part of boundary.

Still the approaches used in the aforementioned papers failed to deal with the viscous boundary layers appearing near the uncontrolled part of the boundary. This is precisely the goal of this paper to promote the *well-prepared dissipation method* in order to obtain some controllability results despite the presence of boundary layers. This method was first introduced in [24] by the second author in order to deduce a controllability result for the 1D Burgers equation. The extension of this method to the Navier-Stokes equations will be crucial in our proof of Theorem 5.1. In particular here the method will be implemented thanks to a multi-scale expansion describing the boundary layer occurring in the vanishing viscosity limit of the Navier-Stokes equations. The application of the method is presented in Section 12.

### §7. A few words of caution

Next sections are devoted to the scheme of proof of Theorem 5.1. We will try to highlight a few key ingredients whereas some technical difficulties will be omitted on purpose for the sake of clarity. We refer to [6] for a complete proof.

Let us also mention here that we are not going to really use a control all the time in the sense that it will be relevant on some time intervals to choose as boundary condition on  $\Sigma$  the same Navier condition than on  $\partial\Omega \setminus \Sigma$  so that the system then coincides with the uncontrolled one for which  $\Sigma = \emptyset$ .

### §8. Reduction to an approximate controllability problem from a smooth initial data

In this section we are going to prove that it is sufficient to have the existence of a solution starting from an arbitrary smooth initial data and reaching a state

close to zero in  $L^2_\sigma(\Omega)$ , in any positive time in order to conclude the proof of Theorem 5.1. Indeed according to Leray's partial regularity result hinted above (cf. below Theorem 3.1), there exists  $t^*$  in  $(0, T/2)$  such that  $u(t^*, \cdot)$  is  $C^\infty(\Omega)$ . Let us assume that we are able to prove the existence of a solution starting from  $u(t^*, \cdot)$  at time  $t^*$  and reaching, say at time  $3T/4$ , a state close enough to zero in  $L^2_\sigma(\Omega)$  such that the local controllability results mentioned above can be applied<sup>3</sup> on the remaining time interval  $(3T/4, T)$ . Then the concatenation of this three steps yields Theorem 5.1 (see Figure 2). Our task is therefore only to obtain approximate null controllability from a smooth initial data on the intermediate time interval  $(t^*, 3T/4)$ . In order to simplify the notations let us pretend that this interval is  $(0, T)$  in the next sections. On the other hand we will denote  $u_*$  the initial data, which is smooth, for this new problem, in order to distinguish it from the original initial data  $u_0$  which was only assumed to be in  $L^2_\sigma(\Omega)$ .

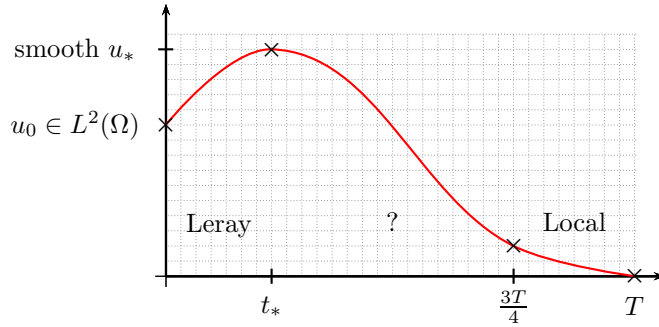


Figure 2. Reduction to a global approximate controllability problem

### §9. A fast and furious control

In order to take profit of the nonlinearity at our advantage we aim at reaching approximatively zero thanks to a control which is fast and furious in the sense that its amplitude and duration are scaled with respect to a small positive parameter  $\varepsilon$  which is introduced by force and will be ultimately taken small enough. Indeed

<sup>3</sup>Results available in the local controllability literature require to start with an initial data which is more regular than  $L^2$  but Leray's partial regularization of the uncontrolled Navier-Stokes equations can be used again in order to glue these steps. Here we have to pay attention to the preservation of the smallness assumption in this regularization argument (cf. [6] for more).

we look for a solution  $u$  to (5.1) of the form

$$(9.1) \quad u(t, x) = \frac{1}{\varepsilon} u^\varepsilon \left( \frac{t}{\varepsilon}, x \right),$$

having in mind to look for a family of functions  $u^\varepsilon$  with, typically, variations of order  $O(1)$  on time interval of order  $O(1)$ . This means for the original searched solution  $u$  having fast transitions on time interval of order  $O(\frac{1}{\varepsilon})$  with furious amplitudes of order  $O(\frac{1}{\varepsilon})$ . The underlying idea is to start with the ambitious idea to try to control the system during the shorter time interval  $[0, \varepsilon T]$  with forcing the system to evolve in a high Reynolds regime.

Regarding the pressure  $p$  associated with the original solution  $u$ , having in mind Bernoulli's principle which associates the pressure with the square of the velocity, we look for an ansatz of the form

$$p(t, x) = \frac{1}{\varepsilon^2} p^\varepsilon \left( \frac{t}{\varepsilon}, x \right).$$

This translates the original system in a new system with four main changes:

- i) The new unknowns  $u^\varepsilon$  and  $p^\varepsilon$  satisfy the Navier-Stokes equations with a small viscosity coefficient  $\varepsilon$ .
- ii) The initial data for  $u^\varepsilon$  is now small equal to  $\varepsilon u_*$ .
- iii) The time interval is now  $(0, \frac{T}{\varepsilon})$  so that we have to investigate the large time behaviour of the system. In particular, although the initial data is small, nonlinearities will matter.

The system for  $(u^\varepsilon, p^\varepsilon)$  therefore reads:

$$(9.2) \quad \left\{ \begin{array}{ll} \partial_t u^\varepsilon + (u^\varepsilon \cdot \nabla) u^\varepsilon - \varepsilon \Delta u^\varepsilon + \nabla p^\varepsilon = 0 & \text{in } (0, T/\varepsilon) \times \Omega, \\ \operatorname{div} u^\varepsilon = 0 & \text{in } (0, T/\varepsilon) \times \Omega, \\ u^\varepsilon \cdot n = 0 & \text{on } (0, T/\varepsilon) \times \partial\Omega \setminus \Sigma, \\ N(u^\varepsilon) = 0 & \text{on } (0, T/\varepsilon) \times \partial\Omega \setminus \Sigma, \\ u^\varepsilon|_{t=0} = \varepsilon u_* & \text{in } \Omega. \end{array} \right.$$

- iv) Last change but not least, the rest state is now targeted (at the final time  $T/\varepsilon$ ) with more precision. Indeed we now plan to prove that there exists a solution  $u^\varepsilon$  to the underdetermined system (9.2) such that

$$(9.3) \quad \left\| u^\varepsilon \left( \frac{T}{\varepsilon}, \cdot \right) \right\|_{L^2(\Omega)} = o(\varepsilon)$$

in order to deduce from (9.1) that there exists a solution  $u$  to (5.1) such that  $\|u(T, \cdot)\|_{L^2(\Omega)} = o(1)$ . In particular, choosing  $\varepsilon$  small enough allows to



reach a state arbitrarily close to 0 in  $L^2$ . This will provide the approximate controllability result mentioned in the previous section.

### §10. Inviscid flushing

When  $\varepsilon$  is small, it is expected that the analysis of the system (9.2) may be built on the small-time global exact controllability of Euler equations. We therefore consider the following counterpart of the system (9.2) where the viscosity term has been dropped out:

$$(10.1) \quad \begin{cases} \partial_t u^E + (u^E \cdot \nabla) u^E + \nabla p^E = 0 & \text{in } \Omega, \\ \operatorname{div} u^E = 0 & \text{in } \Omega, \\ u^E \cdot n = 0 & \text{on } \partial\Omega \setminus \Sigma, \\ u^E|_{t=0} = \varepsilon u_* & \text{in } \Omega. \end{cases}$$

As the initial data is of order  $O(\varepsilon)$  in  $L^\infty$  it is natural to for a solution  $u^E$  to (10.1) which is, at least for times of order  $O(1)$ , of the form:

$$(10.2) \quad u^E = \varepsilon u^1 + o(\varepsilon) \quad \text{and} \quad p^E = \varepsilon p^1 + o(\varepsilon).$$

Plugging expansions (10.2) into (10.1) and grouping terms of order  $O_{L^\infty}(\varepsilon)$  yields:

$$(10.3) \quad \begin{cases} \partial_t u^1 + \nabla p^1 = 0 & \text{in } \Omega, \\ \operatorname{div} u^1 = 0 & \text{in } \Omega, \\ u^1 \cdot n = 0 & \text{on } \partial\Omega \setminus \Sigma, \\ u^1|_{t=0} = u_* & \text{in } \Omega. \end{cases}$$

By elementary combinations of the equations we observe that the system (10.3) does not admit any solution reaching exactly 0 unless the initial data  $u_*$  is the gradient of a harmonic function, which is not the case in general. System (10.3) suffers from a lack of controllability which will prevent from using it for our purposes.

In order to overcome this difficulty we are going to use the return method first introduced by the first author in [2]. This method takes profit of the nonlinearity thanks to an auxiliary controlled solution to the Euler system. Indeed, instead expansions (10.2), we will rather look for some asymptotic expansions of the form:

$$(10.4) \quad u^E = u^0 + \varepsilon u^1 + o(\varepsilon) \quad \text{and} \quad p^E = p^0 + \varepsilon p^1 + o(\varepsilon),$$

where the extra-term  $(u^0, p^0)$  is introduced in order to help to control  $(u^1, p^1)$ . Of course  $(u^0, p^0)$  has to be solution to the Euler system in order to cancel out the

terms of order  $O(1)$  which appear when plugging the expansions (10.4) into the first three equations of (10.1). Moreover the last equation yields the initial data  $u^0|_{t=0} = 0$  in  $\Omega$ . The interest is that the equations obtained by gathering the terms of order  $O(\varepsilon)$  are now:

$$(10.5) \quad \begin{cases} \partial_t u^1 + (u^0 \cdot \nabla) u^1 + (u^1 \cdot \nabla) u^0 + \nabla p^1 = 0 & \text{in } \Omega, \\ \operatorname{div} u^1 = 0 & \text{in } \Omega, \\ u^1 \cdot n = 0 & \text{on } \partial\Omega \setminus \Sigma, \\ u^1|_{t=0} = u_* & \text{in } \Omega. \end{cases}$$

This is the linearisation of the Euler equations around  $u^0$  (rather than around 0 like in (10.3)). We may now rely on the transport by  $u^0$  (see Figure 3) in order to drive  $u^1$  from  $u_*$  to 0, see the second term in the first equation of (10.5). More precisely we want to use the transport by  $u^0$  in order to flush  $u^1$  out of the domain. Of course the system (10.5) has, in addition to the transport aspect, non local features due to the incompressibility condition. Still, reasoning on the vorticity of  $u^1$ , we obtain that if the fluid particles are flushed outside of the physical domain within a time interval of order  $O(1)$ , say  $[0, T]$  (that is if any fluid particle initially at  $x$  in  $\Omega$  moves with the flow associated with  $u^0$  up to some time  $t_x \in (0, T)$  for which it reaches  $\Sigma$  with a positive velocity), then  $u^1$  can be set equal to 0. Observe that this requires a time interval far smaller than the allotted one which is  $[0, T/\varepsilon]$ .

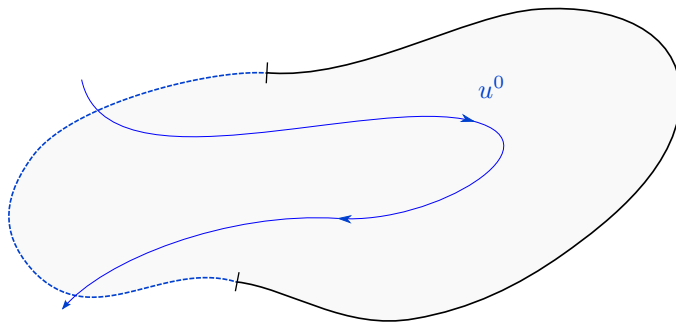


Figure 3. Inviscid flushing

On the other hand this auxiliary field  $u^0$  also has to vanish at the final time. In order to construct such a field, a crucial observation is that the potential flows as solutions to the Euler system enjoy a lot of freedom regarding their behaviour

in time. Indeed if a scalar function  $\alpha(x)$  satisfies

$$(10.6) \quad \begin{cases} \Delta_x \alpha = 0 & \text{in } \Omega, \\ \partial_n \alpha = 0 & \text{on } \partial\Omega \setminus \Sigma, \end{cases}$$

then for any function  $\eta(t)$ , the vector field  $\eta(t)\nabla_x\alpha(x)$  satisfies the first three equations of (10.1) for an appropriate pressure. In particular it is possible to choose a nonzero function  $\eta(t)$  satisfying  $\eta(0) = \eta(T) = 0$ , so that this process leads to a field  $u^0$  starting from zero initial data and which vanishes at time  $T$ . Moreover the set of the scalar functions satisfying the underdetermined Neumann problem (10.6) is rich enough to provide, by an appropriate gluing strategy, vector fields flushing the whole domain on the time interval  $[0, T]$ .

**Lemma 10.1.** *There exists a smooth solution  $(u^0, p^0)$  to*

$$(10.7) \quad \begin{cases} \partial_t u^0 + (u^0 \cdot \nabla) u^0 + \nabla p^0 = 0 & \text{in } \Omega, \\ \operatorname{div} u^0 = 0 & \text{in } \Omega, \\ u^0 \cdot n = 0 & \text{on } \partial\Omega \setminus \Sigma, \\ u^0|_{t=0} = 0 & \text{in } \Omega, \\ u^0|_{t=T} = 0 & \text{in } \Omega, \end{cases}$$

such that the smooth solution  $(u^1, p^1)$  to system (10.5) satisfies  $u^1|_{t=T} = 0$  in  $\Omega$ .

This lemma is proved on the one hand by the first author in the papers [2] and [4] respectively for 2D simply connected domains and for general 2D domains when  $\Sigma$  intersects all connected components of  $\partial\Omega$ , and on the other hand by Glass in [9] and [10] for the corresponding cases in 3D.

In the sequel, when we need it, we will implicitly extend the previous fields  $u^0$  and  $u^1$  by zero after  $T$ .

### §11. Boundary layer

The difficulty comes from the fact that the Euler equation, which models the behavior of a perfect fluid, not subject to friction, is only associated with the boundary condition  $u \cdot n = 0$  for an impermeable wall and does not satisfy in general the Navier slip-with-friction boundary condition on  $\partial\Omega \setminus \Sigma$ . An accurate description of a solution of the Navier-Stokes equation near  $\partial\Omega \setminus \Sigma$ , even for a small viscosity, has therefore to use an expansion where a corrector is added to a solution to the Euler equation.

In the uncontrolled setting for which  $\Sigma = \emptyset$  the description of the behavior of the Navier-Stokes equation under the Navier slip-with-friction condition in the

vanishing viscosity limit was performed by Iftimie and the third author in [17] thanks to a multiscale asymptotic expansion involving a boundary layer term  $v$  of amplitude  $\mathcal{O}(\sqrt{\varepsilon})$  and of thickness  $\mathcal{O}(\sqrt{\varepsilon})$  for a vanishing viscosity  $\varepsilon$ . Let us first briefly recall this result which will be extended in the sequel to the controlled case.

Let us use here temporarily again the notation  $u^0$  for a smooth solution to the Euler equations on the time interval  $[0, T]$  with the impermeability condition  $u^0 \cdot n = 0$  on the full boundary  $\partial\Omega$ . The boundary layer corrector will involve an extra variable describing the fast variations of the fluid velocity in the normal direction near the boundary and will be given as a solution to an initial boundary value problem with a boundary condition with respect to this extra variable. We introduce a smooth function  $\varphi : \mathbb{R}^d \rightarrow \mathbb{R}$  such that  $\varphi = 0$  on  $\partial\Omega$ ,  $\varphi > 0$  in  $\Omega$  and  $\varphi < 0$  outside of  $\bar{\Omega}$ . Moreover, we assume that  $|\varphi(x)| = \text{dist}(x, \Omega)$  in a small neighborhood of  $\partial\Omega$ . Hence, the normal  $n$  can be computed as  $-\nabla\varphi$  close to the boundary and extended smoothly within the full domain  $\Omega$ . The notation  $[\cdot]_{\text{tan}}$ , introduced in (2.1), is extended accordingly. We also introduce the following definitions:

$$u_b^0(t, x) := -\frac{u^0(t, x) \cdot n(x)}{\varphi(x)} \quad \text{and} \quad g^0(t, x) := 2\chi(x)N(u^0)(t, x) \quad \text{for } x \in \Omega,$$

where  $\chi$  is a smooth cut-off function satisfying  $\chi = 1$  on  $\partial\Omega$ . Even though  $\varphi$  vanishes on  $\partial\Omega$ ,  $u_b^0$  is not singular near the boundary because of the impermeability condition  $u^0 \cdot n = 0$ . Indeed since  $u^0$  is smooth, a Taylor expansion proves that  $u_b^0$  is smooth in  $\bar{\Omega}$ . The boundary layer corrector will be described by a smooth vector field  $v$  expressed in terms both of the slow space variable  $x \in \Omega$  and a fast scalar variable  $z = \varphi(x)/\sqrt{\varepsilon}$ , where  $v(t, x, z)$  satisfies the equation:

$$(11.1) \quad \partial_t v + [(u^0 \cdot \nabla)v + (v \cdot \nabla)u^0]_{\text{tan}} + u_b^0 z \partial_z v - \partial_{zz} v = 0,$$

for  $x$  in  $\bar{\Omega}$  and  $z$  in  $\mathbb{R}_+$ , with the following boundary condition at  $z = 0$ :

$$(11.2) \quad \partial_z v(t, x, 0) = g^0(t, x).$$

We refer to [17, Section 2] for a detailed heuristic of the equations (11.1) and (11.2). Let us only mention here that these equations are obtained by plugging

$$u^0(t, x) + \sqrt{\varepsilon} v \left( t, x, \frac{\varphi(x)}{\sqrt{\varepsilon}} \right) \quad \text{instead of } u^\varepsilon(t, x)$$

into the first and fourth equations of (9.2) and keeping the terms of higher order (taking into account that  $u^0$  satisfies the Euler equations). Indeed the pressure  $p^\varepsilon$  has to be expanded as well, into the sum of the Euler pressure and of a boundary layer term but the latter can be eliminated from the resulting equation by distinguishing the normal and tangential parts. Thus this pressure boundary layer term

acts as a projection on the convective terms and this is why the second term in (11.1) is only tangential.

The Cauchy problem associated with (11.1) and (11.2) is well-posed in Sobolev spaces. Moreover for any  $x \in \bar{\Omega}$ ,  $z \geq 0$  and  $t \geq 0$ , we have

$$(11.3) \quad v(t, x, z) \cdot n(x) = 0$$

It is easy to check that the solution inherits this condition from the initial and boundary data. This orthogonality property is the reason why equation (11.1) is linear. Indeed, the quadratic term  $(v \cdot n)\partial_z v$  should have been taken into account if it did not vanish. Thanks to the cut-off function  $\chi$ , satisfying  $\chi = 1$  on  $\partial\Omega$ ,  $v$  is compactly supported in  $x$  near  $\partial\Omega$ , while ensuring that  $v$  compensates the Navier slip-with-friction boundary trace of  $u^0$ .

Then it is proved in [17] that the Leray solutions  $u^\varepsilon$  to the Navier-Stokes equation can be described by the following expansion in  $L^\infty((0, T); L^2(\Omega))$ :

$$u^\varepsilon(t, x) = u^0(t, x) + \sqrt{\varepsilon}v\left(t, x, \frac{\varphi(x)}{\sqrt{\varepsilon}}\right) + O(\varepsilon).$$

Let us highlight that this expansion holds up to any time  $T > 0$  for which  $u^0$  is a smooth solution to the Euler equations on the time interval  $[0, T]$ . On the other hand this analysis fails to describe the vanishing viscosity limit of the Navier-Stokes equation for large times of order  $O(\frac{1}{\varepsilon})$ , even in the case where the Euler solution stays smooth for all times.

Now going back to the controlled setting for which  $\Sigma \neq \emptyset$  we expect to be able to describe the behavior of the Navier-Stokes equation near the uncontrolled part  $\partial\Omega \setminus \Sigma$  of the boundary in the vanishing viscosity limit thanks to a similar expansion. Indeed since we aim at finding a Navier-Stokes solution satisfying (9.3) we consider the following refined expansion:

$$(11.4) \quad u^\varepsilon(t, x) = u^0(t, x) + \sqrt{\varepsilon}v\left(t, x, \frac{\varphi(x)}{\sqrt{\varepsilon}}\right) + \varepsilon u^1(t, x) + \varepsilon r^\varepsilon(t, x),$$

where  $u^0$  and  $u^1$  are as Lemma 10.1 and the vector field  $r^\varepsilon$  is wished to be  $o(1)$  at time  $\frac{T}{\varepsilon}$ . If so, and since the fields  $u^0$  and  $u^1$  are zero after the time  $T$ , the leading part of the the expansion (11.4) after  $T$  is given by the second term in the right hand side and we therefore must understand the large time behavior of this boundary layer. For  $t \geq T$ , the equations (11.1) and (11.2) reduce to

$$(11.5) \quad \begin{cases} \partial_t v - \partial_{zz} v = 0, & \text{for } z \in \mathbb{R}_+, \\ \partial_z v(t, x, 0) = 0, \end{cases}$$

where the slow variables  $x \in \mathcal{O}$  play the role of parameters through the “initial” data  $\bar{v}(x, z) := v(T, x, z)$ .

This heat system dissipates towards the null equilibrium state. Unfortunately the natural decay (that is without any assumption on  $\bar{v}$ ) at the final time  $t = T/\varepsilon$  only yields

$$(11.6) \quad \left\| \sqrt{\varepsilon} v \left( \frac{T}{\varepsilon}, \cdot, \frac{\varphi(\cdot)}{\sqrt{\varepsilon}} \right) \right\|_{L^2(\Omega)} = \mathcal{O}(\varepsilon),$$

which is not sufficient in view of the wished estimate (9.3). Physically, this is due to the fact that the average of  $v$  is preserved under its evolution by equation (11.5) and to the fact that the energy contained by low frequency modes decays slowly.

### §12. Well-prepared dissipation method

In order to overcome the previous difficulty we are going to use the *well-prepared dissipation method* first introduced in [24] by the second author in order to obtain a new controllability result of the 1D Burgers equation in the presence of a boundary layer. We will here adjust the method to the boundary layers associated with the Navier conditions in the vanishing viscosity limit of the Navier-Stokes equations. The idea is to design a control strategy in order to enhance the natural dissipation of the boundary layer after the time  $T$ . Our strategy will be to guarantee that  $\bar{v}$  satisfies a finite number of vanishing moment conditions for  $k \in \mathbb{N}$  of the form:

$$(12.1) \quad \forall x \in \Omega, \quad \int_{\mathbb{R}_+} z^k \bar{v}(x, z) dz = 0.$$

This will allow to enhance the dissipation and to improve the estimate (11.6) into

$$(12.2) \quad \left\| \sqrt{\varepsilon} v \left( \frac{T}{\varepsilon}, \cdot, \frac{\varphi(\cdot)}{\sqrt{\varepsilon}} \right) \right\|_{L^2(\Omega)} = o(\varepsilon).$$

Actually we aim at constructing the different fields mentioned so far by restriction to the physical domain  $\Omega$  of solutions to analogous problems in a larger domain  $\mathcal{O}$  extended across  $\Sigma$  (and  $\mathcal{O}$  can be chosen smooth, bounded and simply connected) with source terms compactly supported in the added portion of the domain. This means in particular that we intend to find a solution that we still denote  $(u^\varepsilon, p^\varepsilon)$  of the following Navier-Stokes equations:

$$\partial_t u^\varepsilon + (u^\varepsilon \cdot \nabla) u^\varepsilon - \varepsilon \Delta u^\varepsilon + \nabla p^\varepsilon = \zeta^\varepsilon$$

for  $x$  in  $\mathcal{O}$  where the source term  $\zeta^\varepsilon(t, x)$  is a vector field supported for  $x$  in  $\mathcal{O} \setminus \bar{\Omega}$ , of the form

$$\zeta^\varepsilon = \zeta^0(t, x) + \sqrt{\varepsilon} \zeta_v \left( t, x, \frac{\varphi(x)}{\sqrt{\varepsilon}} \right) + \varepsilon \zeta^1(t, x),$$

where  $\zeta^0$  and  $\zeta^1$  are smooth vector fields used in order to insure Lemma 10.1 whereas the vector field  $\zeta_v(t, x, z)$  is devoted to the control of the moments of the boundary layer. Indeed we now aim at obtaining a profile  $v$  solution to the following equation:

$$(12.3) \quad \partial_t v + [(u^0 \cdot \nabla)v + (v \cdot \nabla)u^0]_{\text{tan}} + u_b^0 z \partial_z v - \partial_{zz} v = \zeta_v,$$

for  $x$  in  $\mathcal{O}$  and  $z$  in  $\mathbb{R}_+$ . Since the initial boundary value satisfied by  $v$  is linear, its moments at time  $T$  (see the left hand side of (12.1)), can be decomposed as the sum of an addend due to the right hand side of (11.2) and of an addend due to the outside control (see the right hand side of (12.3)), which generates some moments outside, and are convected inside the domain by the field  $u^0$ , see the second term in (11.1). Indeed, according to Duhamel's formula, the second addend is given by an integral over the time interval  $[0, T]$ , which allows to insure the condition (12.1) for all  $x$  in  $\Omega$ .

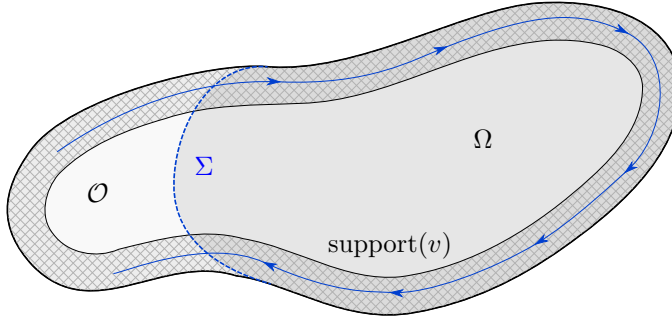


Figure 4. The kaitenzushi strategy

Let us use here the following metaphor: see the extended domain as a conveyor-belt sushi restaurant, the added part of the extended domain as the kitchen and the moments as the plates (see Figure 4). In order to send some plates from the kitchen, without sending the chef into the dining room, we use the transport by the field  $u^0$  as a conveyor belt to serve the wished moments (compensating what comes from the uncontrolled part of the boundary) all along the boundary before the end of the service, which corresponds here to the time  $T$ . In this process it is

crucial to maintain the orthogonality condition (11.3) (otherwise the linearity of the equation would dramatically fall down because of the term  $(v \cdot n) \partial_z v$  mentioned above). Let us observe that it seems impossible to control completely the boundary layer  $v$  because the plates need some time to be conveyed from the kitchen and are therefore strongly regularized in  $z$  (the equation (11.2) is parabolic in  $z$ ) when they are supposed to be compensating what comes instantly from the nonhomogeneous data on the uncontrolled part of the boundary and is therefore far less regularized. Thus a compensation is only possible for a projection on a functional space containing the two types of contributions and we precisely make use of some finite dimensions projections by adjusting a finite number of moments.

### §13. Estimates of the remainder

Going back to the velocity expansion (11.4) we are led now to the issue of estimating the large time behaviour of the remainder  $r^\varepsilon$ . The field  $r^\varepsilon$  can be naturally defined as the solution to a Navier-Stokes type equation of the form:

$$(13.1) \quad \partial_t r^\varepsilon + (u^\varepsilon \cdot \nabla) r^\varepsilon - \varepsilon \Delta r^\varepsilon + \nabla \pi^\varepsilon + A^\varepsilon r^\varepsilon = f^\varepsilon,$$

where  $\pi^\varepsilon$  denotes the pressure associated with the vector field  $r^\varepsilon$ , the notation  $A^\varepsilon$  stands for an amplification operator and  $f^\varepsilon$  for a source term both due to the terms which were omitted in the equations of  $u^0$ ,  $u^1$  and  $v$  for being of higher order in  $\varepsilon$ . Since the field  $u^1$  bears the initial data  $u_*$ , this remainder starts with a zero initial data (taking the trace at the initial time of the equality (11.4) and taking into account that  $u^0$  and  $v$  start with zero initial data) but is generated by the source term  $f^\varepsilon$  and possibly amplified by mean of the term  $A^\varepsilon r^\varepsilon$ . Of course the equation (13.1) is completed with the divergence free condition and some initial and boundary conditions. Here the key points in the large time estimate of  $r^\varepsilon$  are on the one hand that the quadratic nonlinearity in term of  $r^\varepsilon$  which is hidden in the third term of (13.1) is tamed by a factor  $\varepsilon$ , see the velocity expansion (11.4), and on the other hand that the effects of both  $A^\varepsilon$  and  $f^\varepsilon$  are tamed by the enhanced dissipation hinted in Section 12. Let us refer once more to [6] for more on the technicalities and only conclude here that the result of an energy estimate is that

$$(13.2) \quad \left\| r^\varepsilon \left( \frac{T}{\varepsilon}, \cdot \right) \right\|_{L^2(\Omega)} = o(1).$$

### §14. Conclusion

Taking into account that the fields  $u^0$  and  $u^1$  vanish after  $T$ , estimates (12.2) and (13.2) plugged into expansion (11.4) yield (9.3) and therefore conclude the



proof of Theorem 5.1 thanks to the preliminary reductions performed in Sections 8 and 9. The evolution of the state during the control strategy is pictured in Figure 5.

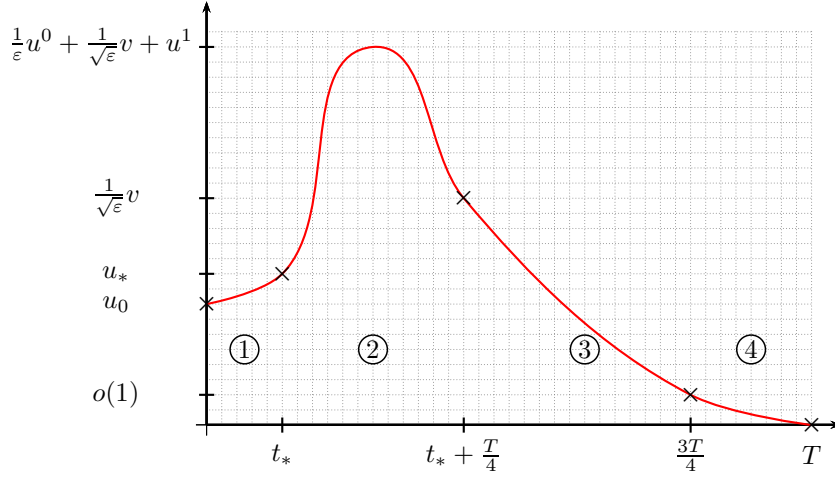


Figure 5. Four main steps of the evolution

The main steps of the proof can be summarized as in Table 1.

| Stage | References       | Active control | Linear behaviour   | Used effect |
|-------|------------------|----------------|--------------------|-------------|
| 1     | [21]             | No             |                    | Dissipation |
| 2     | [2, 4, 6, 9, 10] | Yes            | $v$                | Convection  |
| 3     | [6, 24]          | No             | $v, r^\varepsilon$ | Dissipation |
| 4     | [14, 16]         | Yes            | $u^\varepsilon$    | Dissipation |

Table 1. Main features of the control steps

### §15. Perspectives

Let us mention a few questions inspired by this work:

1. Provided a smooth initial data, is there a strong solution to the 3D Navier-Stokes system reaching zero at time  $T$ ? The 2D case follows from Theorem 5.1.
2. Is it possible to deduce from the previous analysis some Lagrangian controllability results? This would extend the results obtained in [11], [12] for the

incompressible Euler equations and in [13] for the stationary Stokes equation. This issue is actually related to the previous one as Lagrangian setting requires enough regularity for the flow to be controlled.

3. Last but not least, is it possible to tackle (OP) in the more difficult case of the no-slip boundary condition, at least for some favorable geometric settings? This is a very challenging open problem because the no-slip boundary condition gives rise to boundary layers that have a larger amplitude than Navier slip-with-friction boundary layers. We refer to the nice recent survey [23] by Maekawa and Mazzucato for more on boundary layers in the no-slip case.

### Acknowledgements

The two first authors were partly supported by ERC Advanced Grant 266907 (CPDENL) of the 7th Research Framework Programme (FP7). The third author thanks the Agence Nationale de la Recherche, Project DYFICOLTI, grant ANR-13-BS01-0003-01, Project IFSMACS, grant ANR-15-CE40-0010 for their financial support and the third author thanks the hospitality of RIMS during the workshop on “Mathematical Analysis of Viscous Incompressible Fluid”.

### References

- [1] Marianne Chapouly. On the global null controllability of a Navier-Stokes system with Navier slip boundary conditions. *J. Differential Equations*, 247(7):2094–2123, 2009.
- [2] Jean-Michel Coron. Contrôlabilité exacte frontière de l’équation d’Euler des fluides parfaits incompressibles bidimensionnels. *C. R. Acad. Sci. Paris Sér. I Math.*, 317(3):271–276, 1993.
- [3] Jean-Michel Coron. On the controllability of the 2-D incompressible Navier-Stokes equations with the Navier slip boundary conditions. *ESAIM Contrôle Optim. Calc. Var.*, 1:35–75 (electronic), 1995/96.
- [4] Jean-Michel Coron. On the controllability of 2-D incompressible perfect fluids. *J. Math. Pures Appl. (9)*, 75(2):155–188, 1996.
- [5] Jean-Michel Coron and Andrei Fursikov. Global exact controllability of the 2D Navier-Stokes equations on a manifold without boundary. *Russian J. Math. Phys.*, 4(4):429–448, 1996.
- [6] Jean-Michel Coron, Frédéric Marbach, Franck Sueur, Small time global exact null controllability of the Navier-Stokes equation with Navier slip-with-friction boundary conditions. Preprint 2016. <http://arxiv.org/abs/1612.08087>.
- [7] Enrique Fernández-Cara, Sergio Guerrero, Oleg Imanuvilov, and Jean-Pierre Puel. Local exact controllability of the Navier-Stokes system. *J. Math. Pures Appl. (9)*, 83(12):1501–1542, 2004.
- [8] Andrei Fursikov and Oleg Imanuvilov. Exact controllability of the Navier-Stokes and Boussinesq equations. *Uspekhi Mat. Nauk*, 54(3(327)):93–146, 1999.
- [9] Olivier Glass. Contrôlabilité exacte frontière de l’équation d’Euler des fluides parfaits incompressibles en dimension 3. *C. R. Acad. Sci. Paris Sér. I Math.*, 325(9):987–992, 1997.

- [10] Olivier Glass. Exact boundary controllability of 3-D Euler equation. *ESAIM Control Optim. Calc. Var.*, 5:1–44 (electronic), 2000.
- [11] Olivier Glass and Thierry Horsin. Approximate Lagrangian controllability for the 2-D Euler equation. Application to the control of the shape of vortex patches. *J. Math. Pures Appl. (9)*, 93(1):61–90, 2010.
- [12] Olivier Glass and Thierry Horsin. Prescribing the motion of a set of particles in a three-dimensional perfect fluid. *SIAM J. Control Optim.*, 50(5):2726–2742, 2012.
- [13] Olivier Glass and Thierry Horsin. Lagrangian controllability at low Reynolds number. *ArXiv e-prints*, February 2016.
- [14] Sergio Guerrero. Local exact controllability to the trajectories of the Navier-Stokes system with nonlinear Navier-slip boundary conditions. *ESAIM Control Optim. Calc. Var.*, 12(3):484–544 (electronic), 2006.
- [15] Sergio Guerrero, Oleg Imanuvilov, and Jean-Pierre Puel. A result concerning the global approximate controllability of the Navier-Stokes system in dimension 3. *J. Math. Pures Appl. (9)*, 98(6):689–709, 2012.
- [16] Teodor Havârneanu, Cătălin Popa, and Sivaguru Sritharan. Exact internal controllability for the two-dimensional Navier-Stokes equations with the Navier slip boundary conditions. *Systems Control Lett.*, 55(12):1022–1028, 2006.
- [17] Dragoş Iftimie and Franck Sueur. Viscous boundary layers for the Navier-Stokes equations with the Navier slip conditions. *Arch. Ration. Mech. Anal.*, 199(1):145–175, 2011.
- [18] Oleg Imanuvilov. Remarks on exact controllability for the Navier-Stokes equations. *ESAIM Control Optim. Calc. Var.*, 6:39–72 (electronic), 2001.
- [19] Andrei V. Fursikov, and Oleg Y. Imanuvilov. Controllability of evolution equations. *Lecture Notes Series*, 34. Seoul National University, Research Institute of Mathematics, Global Analysis Research Center, Seoul, 1996. iv+163 pp.
- [20] Gilles Lebeau and Luc Robbiano. Contrôle exact de l'équation de la chaleur. *Comm. Partial Differential Equations* 20, no. 1-2, 335-356, 1995.
- [21] Jean Leray. Essai sur les mouvements plans d'un fluide visqueux que limitent des parois. *J. Math. Pures Appl. (13)*, 331-418, 1934.
- [22] Jacques-Louis Lions. Exact controllability for distributed systems. Some trends and some problems. In *Applied and industrial mathematics (Venice, 1989)*, volume 56 of *Math. Appl.*, pages 59–84. Kluwer Acad. Publ., Dordrecht, 1991.
- [23] Yasunori Maekawa and Anna Mazzucato. The Inviscid Limit and Boundary Layers for Navier-Stokes Flows. *ArXiv e-prints*, October 2016.
- [24] Frédéric Marbach. Small time global null controllability for a viscous Burgers' equation despite the presence of a boundary layer. *J. Math. Pures Appl. (9)*, 102(2):364–384, 2014.
- [25] Nader Masmoudi and Frédéric Rousset. Uniform regularity for the Navier-Stokes equation with Navier boundary condition. *Arch. Ration. Mech. Anal.*, 203(2):529–575, 2012.
- [26] Claude-Louis Navier. Mémoire sur les lois du mouvement des fluides. *Mémoires de l'Académie Royale des Sciences de l'Institut de France*, 6:389–440, 1823.

Jean-Michel CORON, Sorbonne Universités, UPMC Univ Paris 06, Lab. Jacques-Louis Lions, UMR CNRS 7598;  
e-mail: [coron@ann.jussieu.fr](mailto:coron@ann.jussieu.fr),

Frédéric MARBACH, Sorbonne Universités, UPMC Univ Paris 06, Lab. Jacques-Louis Lions, UMR CNRS 7598;  
e-mail: [marbach@ann.jussieu.fr](mailto:marbach@ann.jussieu.fr),

Franck SUEUR, Institut de Mathématiques de Bordeaux, UMR CNRS 5251, Université de Bordeaux;  
e-mail: [Franck.Sueur@math.u-bordeaux.fr](mailto:Franck.Sueur@math.u-bordeaux.fr).