



HAL
open science

New insights about the introduction of the Portuguese oyster, *Crassostrea angulata*, into the North East Atlantic from Asia based on a highly polymorphic mitochondrial region

Deborah M. Power, Jonathan W. King, Frederico M. Batista, Ana Grade, Hicham Chairi, Delphine Lallias, Deborah Power, Francisco Ruano, Alexandra Leitão, Teresa Drago, et al.

► **To cite this version:**

Deborah M. Power, Jonathan W. King, Frederico M. Batista, Ana Grade, Hicham Chairi, et al.. New insights about the introduction of the Portuguese oyster, *Crassostrea angulata*, into the North East Atlantic from Asia based on a highly polymorphic mitochondrial region. *Aquatic Living Resources*, 2016, 29 (4), pp.404. 10.1051/alr/2016035 . hal-01483208

HAL Id: hal-01483208

<https://hal.science/hal-01483208>

Submitted on 27 May 2020

HAL is a multi-disciplinary open access archive for the deposit and dissemination of scientific research documents, whether they are published or not. The documents may come from teaching and research institutions in France or abroad, or from public or private research centers.

L'archive ouverte pluridisciplinaire **HAL**, est destinée au dépôt et à la diffusion de documents scientifiques de niveau recherche, publiés ou non, émanant des établissements d'enseignement et de recherche français ou étrangers, des laboratoires publics ou privés.

Copyright

New insights about the introduction of the Portuguese oyster, *Crassostrea angulata*, into the North East Atlantic from Asia based on a highly polymorphic mitochondrial region

Ana GRADE^{1,2}, Hicham CHAIRI³, Delphine LALLIAS^{4,5}, Deborah M. POWER⁶, Francisco RUANO², Alexandra LEITÃO^{1,7}, Teresa DRAGO^{1,8}, Jonathan W. KING⁴, Pierre BOUDRY⁹ and Frederico M. BATISTA^{1,6,a}

¹ Instituto Português do Mar e da Atmosfera, Estação Experimental de Moluscicultura de Tavira, Av. 5 de Outubro, 8700-305 Olhão, Portugal

² Instituto Português do Mar e da Atmosfera, Av. de Brasília, 1449-006 Lisboa, Portugal

³ Université Abdelmalek Essaâdi, Faculté Polydisciplinaire de Larache, Département de Biologie, B.P. 745, 92004 Larache, Morocco

⁴ Centre for Applied Marine Sciences, School of Ocean Sciences, College of Natural Sciences, Bangor University, Menai Bridge, Anglesey LL59 5AB, UK

⁵ Current address: GABI, INRA, AgroParisTech, Université Paris-Saclay, 78350 Jouy-en-Josas, France

⁶ Centro de Ciências do Mar (CCMAR), Universidade do Algarve, Campus de Gambelas, 8005-139 Faro, Portugal

⁷ Environmental Science Center (ESC), Qatar University, P.O. Box: 2713 Doha, Qatar

⁸ Instituto Dom Luiz, Faculdade de Ciências da Universidade de Lisboa, Campo Grande, Edifício C1, Piso, 1749-016 Lisboa, Portugal

⁹ Ifremer, Unité de recherche Physiologie Fonctionnelle des Organismes Marins, Laboratoire des Sciences de l'Environnement Marin (UMR 6539 LEMAR CNRS/UBO/IRD/Ifremer), ZI de la Pointe du Diable, CS 10070, 29280 Plouzané, France

Received 12 July 2016; Accepted 2 December 2016

Abstract – It is commonly presumed that the Portuguese oyster *Crassostrea angulata* was introduced into the North East (NE) Atlantic from Asia. The analysis of the nucleotide sequence of a highly polymorphic non-coding mitochondrial region (major noncoding region – MNR) of *C. angulata* samples collected in Europe (Portugal), Africa (Morocco) and Asia (Shantou and Taiwan) provided new insight into the introduction of this species into the NE Atlantic. Sixty haplotypes and a nucleotide diversity of 0.0077 were observed in 130 analyzed sequences. Higher nucleotide diversity levels were observed in NE Atlantic sites than in Asian sites and significant genetic differentiation was found between the two. Our results suggest that *C. angulata* might have been introduced to the NE Atlantic by multiple introductory events, though the exact origins remain unknown since none of the analyzed Asian sites seemed to have been a source of introduction. The nucleotide diversity of *C. angulata* was higher than that previously reported for Pacific oyster *C. gigas* in Europe and Asia for the same mitochondrial region. The results obtained in the present study suggest that NE Atlantic *C. angulata* stocks are a unique genetic resource, which highlights the importance of their conservation.

Keywords: *Crassostrea angulata* / phylogeography / genetic signature / biological invasions

1 Introduction

The Portuguese explorer Vasco da Gama (ca. 1460–1524) was the first European to reach India by sea in 1498 by sailing around the Cape of Good Hope and across the Indian Ocean. In 1511, the contest of Malaca led by the Portuguese general Afonso de Albuquerque was of crucial importance for the establishment of a commercial maritime route between Europe and Asia (India and China) (Boxer 1969). As many marine organisms can survive attached to the hull of vessels it is possible that Asian species may have been introduced via this route as

early as the XVI century, but this has remained poorly documented until recently (Seebens et al. 2013).

Biological invasions can have dramatic ecological and economic impacts (Simberloff et al. 2013). However, some species introduced involuntary or voluntary have a high social and/or economic importance, which is notably the case in Europe for several marine bivalve species such as the Pacific oyster *Crassostrea gigas* (Thunberg, 1793) and the Manila clam *Ruditapes philippinarum* (Adams and Reeve, 1850).

C. gigas was originally described in Asia whereas the Portuguese oyster *C. angulata* (Lamarck, 1819) was first described in the NE Atlantic. Several comparative studies based on larval shell morphology (Ranson 1960) and allozyme

^a Corresponding author: fmbatista@yahoo.com

Table 1. Genetic diversity of *C. angulata* samples estimated from comparisons of sequences of the major noncoding region (position 10617–11217 bp of EU672832) of mitochondrial DNA.

Site	<i>n</i>	<i>S</i>	<i>h</i>	<i>k</i>	Hd (SD)	π (SD)
Sado (Portugal)	26	22	14	5.09	0.929 (0.028)	0.00760 (0.00068)
Mira (Portugal)	28	22	17	5.20	0.960 (0.018)	0.00791 (0.00064)
Tahaddart (Morocco)	21	24	13	4.63	0.862 (0.073)	0.00705 (0.00103)
Shantou (China)	27	27	11	3.90	0.832 (0.052)	0.00594 (0.00091)
Keelung (Taiwan)	28	36	22	3.83	0.958 (0.030)	0.00583 (0.00058)
Total	130	64	60	5.07	0.968 (0.007)	0.00770 (0.00036)

n, number of individuals analyzed; *S*, number of variable sites; *h*, number of haplotypes; *k*, mean number of nucleotide differences; Hd, haplotype diversity (standard deviation); π , nucleotide diversity (standard deviation).

markers (Mathers et al. 1974; Buroker et al. 1979) suggested that the two taxa were the same species. Studies using other types of genetic markers also reached a similar conclusion (López-Flores et al. 2004; Cross et al. 2006). Several studies have reported the production of F1 hybrids between *C. angulata* and *C. gigas* under experimental conditions (Imai and Sakai 1961; Menzel 1974; Huvet et al. 2002; Batista et al. 2007). Hybrids between *C. angulata* and *C. gigas* have also been reported in the wild (Huvet et al. 2004) and first generation hybrids were shown to be fully viable and fertile under experimental conditions (Huvet et al. 2002). However, several phenotypic and genetic differences were also reported between *C. angulata* and *C. gigas* (for review see Batista et al. 2009). Based on the sequence of the mitochondrial genome the two species were estimated to have diverged about 2.7 million years ago (Ren et al. 2010). The close relationship between *C. angulata* and *C. gigas* has led several authors to suggest that they have a recent common origin (e.g. Ranson 1960). Phylogenetic analysis by O’Foighil et al. (1998) suggested that *C. angulata* has been recently introduced to Europe from Asia. Moreover, Boudry et al. (1998) based on PCR-RFLP data were the first to report the presence of *C. angulata* in Taiwan. Since then, several studies have reported the presence of *C. angulata* in Asia, namely in China (Làpegue et al. 2004; Xia et al. 2009; Wang et al. 2010) and more recently in Okinawa Island, Japan (Sekino and Yamashita 2013).

The absence of *Crassostrea* sp. shells in shell middens in Europe, contrasts with the abundance of shells from the European flat oyster *Ostrea edulis* (e.g. Gutiérrez-Zugasti et al. 2011; Drago et al. unpublished data) and is an additional argument in support of the hypothesis that *C. angulata* was introduced from Asia into Europe, rather than being part of its natural range. Shell middens in Portugal (southern Portugal and Tagus River valley) from different periods (Mesolithic and late Islamic occupation of Iberia) contained *O. edulis* shells but none which were undoubtedly from *Crassostrea* sp. (Drago et al., unpublished data).

The presence of *C. angulata* in Europe dates back at least to its description by Lamarck in 1819. *C. angulata* is of high aquaculture importance, now recognized as one of the most produced species in China (Qin et al. 2012) and sometimes known as the “Fujian oyster”. It was the main bivalve species cultured in France until the 1970’s when massive mortalities almost led to its disappearance (Comps 1988). Nowadays, the only known sites in NE Atlantic where *C. angulata* is present and *C. gigas* has not been detected at least in large numbers are

the Mira and Sado estuaries in Portugal, the Cadiz region in Spain and Tahaddart in Morocco (Fabioux et al. 2002). However, these *C. angulata* beds are threatened by the invasion of *C. gigas* (Huvet et al. 2000).

Many questions remain unanswered about the introduction of *C. angulata* into Europe and the potential consequences. The objective of the present study was to estimate the genetic diversity and differentiation of *C. angulata* sampled in NE Atlantic and Asian sites. A phylogeographic study was performed using samples collected in Europe, Africa and Asia, and sequence data from a highly polymorphic mitochondrial DNA region.

2 Material and methods

2.1 Sampling sites

Oysters presumed to be *C. angulata* were sampled from the following sites: Mira estuary in Portugal (37° 42’N, 8° 44’W) in 2010; Sado estuary in Portugal (38° 25’N, 8° 39’W) in 2010; Tahaddart bay in Morocco (35° 35’N, 5° 59’W) in 2013; and Nanao island, Shantou, Guangdong province in China (23° 25’N, 117° 04’E) in 2012. In addition, samples of *C. angulata* collected in Keelung (Taiwan) previously analysed by Boudry et al. (1998) were also studied. A piece of gill tissue (~2–3 mm²) was dissected from each oyster and stored in ethanol (70–95%). The number of oysters analyzed from each site is given in Table 1.

2.2 DNA extraction, amplification and sequencing

DNA was extracted from gill tissue samples using a DNeasy[®] blood & tissue kit (QIAGEN) following the manufacturer’s instructions. Extracted DNA was then quantified using a spectrophotometer (Nano-Drop Technologies). A 739-bp fragment of the major noncoding region (MNR) of mitochondrial DNA was amplified by PCR using the forward (5’-TCACAAGTACATTTGTCTTCCA-3’) and reverse (5’-AACGTTGTAAGCGTCATGTAAT-3’) primers designed by Aranishi and Okimoto (2005). PCR reactions were performed in a final reaction volume of 25 μ l and contained 2.5 μ l of 10X reaction buffer, 16 μ l of distilled water, 1.5 μ l of dNTP (2.5 mM), 1.5 μ l of MgCl₂ (25 mM), 1 μ l of each primer (10 μ M), 0.5 μ l of Taq polymerase (Supreme NZYTaq DNA

polymerase, NZYTECH) and 1.0 μ l of template DNA (ca. 50 ng). The amplification cycle consisted of an initial denaturation step at 95 °C for 5 min, followed by 40 cycles of 20 s at 95 °C, 20 s at 58 °C, and 1 min at 72 °C. At the end of these cycles a final extension of 7 min at 72 °C was performed. PCR products were purified using NZYgel pure (NZYTECH) following the manufacturer's instructions. Amplicons were separated by electrophoresis on 1.5% agarose gels, stained with GreenSafe (NZYTECH) and visualized under UV light to confirm the expected size and absence of non specific amplification. The purified amplicons were sequenced using the kit ABI PRISM BigDye Terminator v3.1 and an automatic sequencer (Genetic Analyzer 3130xl Applied Biosystems). All singletons were confirmed by repeating the PCR and sequencing analyses.

2.3 Data analysis

Chromatograms of the nucleotide sequences were analyzed using Bioedit version 7.0.9.0 (Hall 1999). After editing, multiple sequence alignments were performed using ClustalW (Thompson et al. 1994). Dnasp (version 5.00.03; Rozas et al. 2003) was used to calculate the number of variable sites, number of haplotypes, mean number of nucleotide differences, haplotype diversity and nucleotide diversity. In order to analyze the demographic history of *C. angulata*, Tajima's D (Tajima 1989), Fu's F (Fu 1997) and R_2 (Ramos-Onsins and Rozas 2002) were also calculated using Dnasp to test constant population size versus population growth. Negative Tajima's D and Fu's F values are expected under a scenario of recent population expansion but can also be a signature of selection (non-neutral evolution). Low R_2 values are expected after a recent severe population growth event (Ramos-Onsins and Rozas 2002). The statistical significance of Tajima's D, Fu's F and R_2 values was calculated with coalescence simulations implemented in Dnasp. ARLEQUIN (version 3.11) was used to calculate pairwise genetic differentiation (F_{st}) using 1000 permutations (Excoffier et al. 2005). A median joining network (Bandelt et al. 1999) was constructed using PopArt (version 1.7; <http://popart.otago.ac.nz>).

3 Results

A total of 60 haplotypes were identified comparing 130 individual nucleotide sequences (length 656–658 bp) of the major noncoding region (MNR) fragment of the mitochondrial genome of *C. angulata* (Genbank accession numbers KY217737-KY217796). The number of total variable sites was 64 and the mean number of nucleotide differences was 5.07. Five indels were observed and the other mutations detected were 59 transitions and 5 transversions.

All haplotypes (with the exception of two sequences from Tahaddart) shared high nucleotide sequence similarity (>98%) for the corresponding region of *C. angulata* mitochondrial genomes (Ren et al. 2010, 2016). Some haplotypes observed in the present study (H5, H6, H11, H32 and H33) were identical to the respective region of the *C. angulata* mitochondrial genomes (Genbank accession numbers KJ855246, KJ855247,

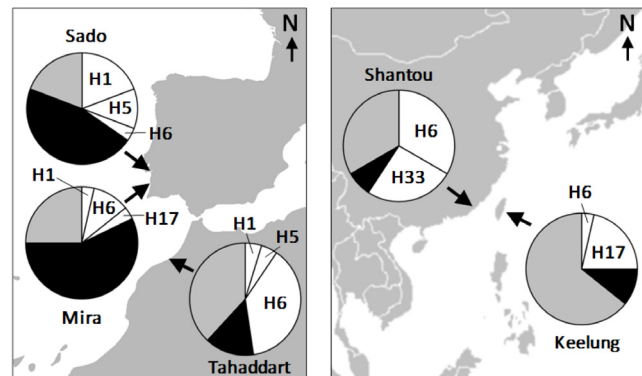


Fig. 1. Haplotype frequencies of *C. angulata* collected in Portugal (Mira and Sado estuaries), Morocco (Tahaddart), Taiwan (Keelung) and China (Shantou). The pie charts show the frequency of the main haplotypes (H1, H5, H6, H17 and H33), unique haplotypes (in gray) and haplotypes shared with other locations (in black).

KJ855248, KJ855249 and EU672832) (Ren et al. 2016). Only two haplotypes, detected in Tahaddart, showed a high nucleotide identity (99.8 and 100%) with haplotypes previously described for *C. gigas* (KJ855243; Ren et al. 2006); they were excluded from the analysis. The nucleotide divergence among *C. angulata* MNR haplotypes ranged from 0.2 to 1.9%. The nucleotide divergence between *C. angulata* and *C. gigas* MNR haplotypes (haplotypes identified by Moehler et al. 2011 with the accession numbers JF505202-JF505277 and position 10615 to 11253 bp of EU672831) ranged from 8.2 to 10.2%.

Table 1 shows the number of *C. angulata* haplotypes detected at each site. The Sado and Mira sites shared seven haplotypes, which was the highest number of shared haplotypes. Haplotype H6 was common to all sites and had the highest overall frequency (16.9%). It was the most frequent haplotype observed in the Shantou site (33%, Fig. 1). The analysis of a Median-joining network constructed using all the haplotypes identified in the study showed that haplotype H6 had a central position and hence is likely to be an ancestral haplotype (Fig. 2). Ten out of 11 haplotypes observed in the Shantou site were only observed in this site (i.e. private haplotypes). Among the 60 haplotypes detected, only four were shared between the NE Atlantic sites (Mira, Sado and Tahaddart) and Asian sites (Shantou and Keelung).

The frequency of unique haplotypes observed in each site ranged from 19.2 to 64.3%. Haplotype diversity ranged from 0.832 to 0.960 and nucleotide diversity from 0.00594 to 0.00791 (Table 1). Significant pairwise genetic differentiation (F_{st} estimates between 0.102 and 0.228) after Bonferroni correction was observed between all NE Atlantic sites and the two Asian sites (Table 2). However, no significant F_{st} estimates (0.003 - 0.072) were observed among the NE Atlantic sites. A significant F_{st} value of 0.151 was estimated between Shantou and Keelung (Table 2). Significant negative Tajima's D values were observed in Shantou and Keelung sites (Table 3) and significant Fu's F negative values were observed in Mira and Keelung sites. Moreover, significant R_2 values were observed in all sites (Table 3).

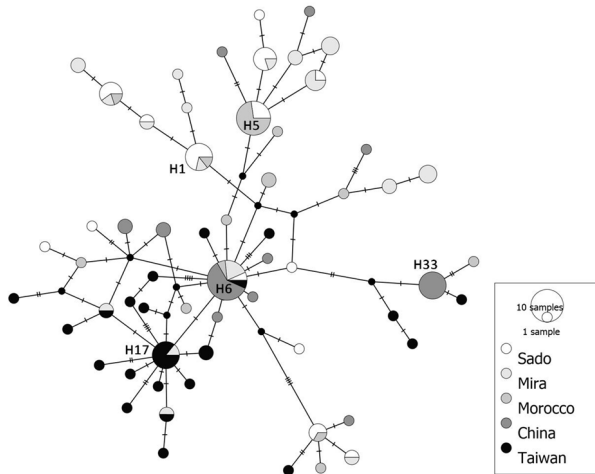


Fig. 2. Median joining network of *C. angulata* DNA haplotypes of a fragment (position 10617–11217 bp of EU672832) of the major noncoding region of the mitochondrial genome. The size of circles corresponds to haplotype frequency and the different colours represent the geographical sites where the haplotypes were observed. The number of perpendicular bars on branches represents the number of mutational steps (indels and/or substitutions) between haplotypes.

Table 2. Pairwise genetic differentiation (*F*_{st}) for *C. angulata* samples collected in North East Atlantic and Asia.

	1	2	3	4	5
1. Sado (Portugal)	–				
2. Mira (Portugal)	0.0641	–			
3. Tahaddart (Morocco)	0.0029	0.0717	–		
4. Shantou (China)	0.1244	0.1600	0.1018	–	
5. Keelung (Taiwan)	0.2250	0.1418	0.2282	0.1508	–

Values in bold are significant after Bonferroni correction ($p < 0.05$).

4 Discussion

The analysis of the nucleotide sequence of a highly polymorphic non-coding mitochondrial region of *C. angulata* samples collected in Europe, Africa and Asia provided new insight into the introduction of this taxon from Asia into the NE Atlantic region. We observed high genetic diversity in *C. angulata* from the NE Atlantic region and genetic differentiation between three NE Atlantic and two Asian sites. Recently, Ren et al. (2016) analyzing intraspecific variation in mitogenomes of *C. gigas*, *C. angulata*, *C. sikamea*, *C. ariakensis* and *C. hongkongensis* observed an overall between species nucleotide diversity ranging from 0.00106 to 0.00683. Using this data, we calculated a nucleotide diversity of 0.0085 from five *C. angulata* mitogenomes (one of the individuals was collected in Portugal and the other four in China; KJ855246–KJ855249 and EU672832) published by Ren et al. (2016) for the mitochondrial region that we studied (i.e. MNR). We obtained a similar nucleotide diversity of 0.0077 for *C. angulata* from the present dataset. Repeating the analysis for the MNR fragments from five *C. gigas* mitogenomes (KJ855241–KJ855245, Ren et al. 2016) resulted in a nucleotide diversity of 0.0049, which was higher than the overall nucleotide diversity of 0.0019 obtained for *C. gigas* by Ren et al. (2016). This difference between

Table 3. Neutrality and demographic tests for *C. angulata* samples estimated from sequences of the major noncoding region (position 10617–11217 bp of EU672832) of mitochondrial DNA.

Site	<i>n</i>	Tajima's D	Fu's F	<i>R</i> ₂
Sado (Portugal)	26	–0.4204	–3.104	0.1055
Mira (Portugal)	28	–0.2869	–5.767	0.1143
Tahaddart (Morocco)	21	–1.1681	–3.833	0.0848
Shantou (China)	27	–1.6214	–1.541	0.0703
Keelung (Taiwan)	28	–2.1708	–18.053	0.0448

*R*₂, Ramos-Onsins and Rozas statistic. Values in bold are significantly different ($p < 0.05$).

the overall mitochondrial genome and MNR region confirms that the mitochondrial region analyzed in the present study is indeed a highly polymorphic region, as was previously suggested by Aranishi and Okimoto (2005) for *C. gigas*.

The nucleotide diversity of *C. angulata* observed in the present study was higher than that previously reported for *C. gigas* for the same mitochondrial region. Moehler et al. (2011) and Lallias et al. (2015) reported nucleotide diversity values of 0.0044 and 0.0046 for *C. gigas*, respectively, with samples mainly collected in Europe but also in Canada and Japan. Hsiao et al. (2016) found haplotype and nucleotide diversities (using mitochondrial cytochrome oxidase I sequences) in Asia being considerably higher in *C. angulata* than in *C. gigas*. This suggests that the number of *C. angulata* individuals introduced into the NE Atlantic must have been sufficiently high to reflect the genetic diversity of *C. angulata* in its native range. In addition to the number of individuals introduced, other factors may influence the genetic diversity of introduced species such as the number of introduction events. It is possible that *C. angulata* was introduced via multiple introduction events and that this may explain the high nucleotide diversity observed in the NE Atlantic relative to the Asian sites. Other possible explanations are that the origin of *C. angulata* was not the two Asian sites analyzed in the present study (i.e. Keelung and Shantou) or that haplotype diversity strongly changed in these sites since the introduction of *C. angulata* into Europe. Indeed, only four out of 60 haplotypes were shared between the NE Atlantic and the two Asian sites. Moreover, the significant *F*_{st} values observed between the NE Atlantic sites and the Keelung and Shantou sites support the hypothesis that these two sites were not the source of the introduction. Huvet et al. (2000) using microsatellite loci also observed a significant *F*_{st} value of 0.0173 between Mira and Keelung sites. Our results therefore do not support the hypothesis that *C. angulata* might have been introduced from Taiwan (for which *C. angulata* DNA-based identification was first reported) to Portugal. The hypothesis is based on previous studies using PCR-RFLP haplotypes of a fragment of the mitochondrial gene cytochrome oxidase subunit I (COI) (Boudry et al. 1998; Huvet et al. 2000). An explanation of this result comes from the much higher polymorphism of MNR sequence data in comparison with RFLP-based COI. Since *C. angulata* is known to be widespread along the southern coast of China (Wang et al. 2010) it is likely that there are other areas that could have been the origin of the NE Atlantic *C. angulata* populations. Consequently, further analyses of *C. angulata* populations in Asia are needed to trace the

putative source(s) of this introduction. However, it cannot be ruled out that the source of *C. angulata* in Asia may have been lost due to anthropogenic activities (seed exchange in relation with aquaculture production) or natural causes (e.g. disease outbreaks), which would then make the NE Atlantic *C. angulata* resources unique.

The lack of genetic differentiation of *C. angulata* from the Sado, Mira and Tahaddart is in agreement with the hypothesis that *C. angulata* was mainly introduced to a single location in Europe (probably the Tagus River, which was one of the main ports for anchoring ships from Asia), from where it was introduced to other locations in the NE Atlantic. For example, it is documented that *C. angulata* was introduced into Morocco from Spain and Portugal in 1952 (Shafee 1985 cited in Fabioux et al. 2002). In contrast to *C. gigas* in Europe, which showed a typical star-shaped haplotype phylogeny characteristic of expanding populations (Moehler et al. 2011; Lallias et al. 2015), the haplotype network of *C. angulata* did not show such a pronounced star-shape. Significant negative Tajima's D values were only found for *C. angulata* samples from Asia, although Fu's F tests were significant for Mira and Keelung samples. Significant R_2 values were observed for all sites. For small samples the R_2 test is more powerful than Tajima's D and Fu's F tests for detecting population growth (Ramos-Onsins and Rozas 2002). Thus, our results suggested that a demographic expansion event occurred recently in *C. angulata*. This is in agreement with the results of Hsiao et al. (2016) who suggested that *C. angulata* in Asia experienced a sudden population expansion after the last glacial maxima. However, the results from Tajima's D, Fu's F and R_2 tests obtained in the present study and in other studies have to be considered cautiously since the coalescent model used may be inappropriate for highly fecund species such as *C. angulata* (Steinrücken et al. 2013).

5 Conclusions

We observed higher nucleotide diversity for *C. angulata* in NE Atlantic sites than in the studied Asian sites. Moreover, significant genetic differentiation was detected between *C. angulata* from three NE Atlantic and two Asian sites. Our results suggested that *C. angulata* might have been introduced into the NE Atlantic through multiple introductory events. However, further analyses in Asia are needed to identify the source(s) of the introduction(s) since none of the Asian sites studied seemed to have been the origin. The NE Atlantic *C. angulata* stocks appear to be unique genetic resources, which highlights the importance of their conservation.

Acknowledgements. This work was funded by the Marinaqua project (03-01-FPE-0013), the European Union Atlantic Area Transnational Programme (2007–2013) project SEAFARE (Grant agreement No. 2009–1/123) and the ShareBiotech consortium within the Share-Biotech project co-financed with the support of the ERDF-Atlantic Area programme (priority 1 INTERREG IVB). However, it does not reflect the European Union's, INTERREG IV B Atlantic Area programmes or local Governments views and in no way anticipates their future policy in this area. F.M. Batista was funded by FCT

(SFRH/BPD/108591/2015). We would like to thank Professor Ziniu Yu for providing samples from Shantou (China). We also would like to thank two anonymous reviewers for their constructive and helpful comments.

References

- Aranishi F., Okimoto T., 2005, Sequence polymorphism in a novel noncoding region of Pacific oyster mitochondrial DNA. *J. Appl. Genet.* 46, 201–206.
- Bandelt H., Forster P., Röhl A., 1999, Median-joining networks for inferring intraspecific phylogenies. *Mol. Biol. Evol.* 16, 37–48.
- Batista F.M., Leitão A., Fonseca V. G., Ben-Hamadou R., Ruano F., Henriques M.A., Guedes-Pinto H., Boudry P., 2007, Individual relationship between aneuploidy of gill cells and growth rate in the cupped oysters *Crassostrea angulata*, *C. gigas* and their reciprocal hybrids. *J. Exp. Mar. Biol. Ecol.* 352, 226–233.
- Batista F.M., Leitão A., Huvet A., Lapègue S., Heurtebise S., Boudry P., 2009, The taxonomic status and origin of the Portuguese oyster *Crassostrea angulata* (Lamarck, 1819). Special Edition of the Proceedings of the 1st & 2nd International Oyster Symposiums 24, pp. 5–13.
- Boudry P., Heurtebise S., Collet B., Cornette F., Gérard A., 1998, Differentiation between populations of the Portuguese oyster, *Crassostrea angulata* (Lamarck) and the Pacific oyster, *Crassostrea gigas* (Thunberg) revealed by mtDNA RFLP analysis. *J. Exp. Mar. Biol. Ecol.* 226, 279–291.
- Boxer C.R., 1969, The Portuguese seaborne empire, 1415–1825. [1st American ed.], A.A. Knopf, New York, p. 426.
- Buroker N.E., Hershberger W.K., Chew K.K., 1979, Population genetics of the family Ostreidae. I. Intraspecific studies of *Crassostrea gigas* and *Saccostrea commercialis*. *Mar. Biol.* 54, 157–169.
- Comps M., 1988, Epizootic diseases of oysters associated with viral infections. In: Fisher, W.S. (Ed.), Disease processes in marine bivalve molluscs. American Fisheries Society Special Publication Bethesda, MD 8, pp. 23–37.
- Cross I., Rebordinos L., Diaz E., 2006, Species identification of *Crassostrea* and *Ostrea* oysters by polymerase chain reaction amplification of the 5S rRNA gene. *J. AOAC Int.* 89, 144–148.
- EFSA, 2010, EFSA Panel on Animal Health and Welfare (AHAW); scientific opinion on the increased mortality events in Pacific oyster (*Crassostrea gigas*). *EFSA J.* 8, 1894.
- Excoffier L., Laval G., Schneider S., 2005, Arlequin (version 3.0): an integrated software package for population genetics data analysis. *Evol. Bioinform.* 1, 47–50.
- Hsiao S.-T., Chuang S.-C., Chen K.-S., Ho P.-H., Wu C.-L., Chen C.A., 2016, DNA barcoding reveals that the common cupped oyster in Taiwan is the Portuguese oyster *Crassostrea angulata* (Ostreoida; Ostreidae), not *C. gigas*. *Scientific Reports* 6: 34057.
- Fabioux C., Huvet A., Lapègue S., Heurtebise S., Boudry P., 2002, Past and present geographical distribution of populations of Portuguese (*Crassostrea angulata*) and Pacific (*C. gigas*) oysters along the European and north African Atlantic coasts. *Haliotis* 31, 33–44.
- Fu Y.X., 1997, Statistical tests of neutrality of mutations against population growth, hitchhiking and background selection. *Genetics* 147, 915–925.
- Gutiérrez-Zugasti I., Andersen S. H., Araújo A.C., Dupont C., Milner N., Monge-Soares A.M., 2011, Shell midden research in Atlantic Europe: State of the art, research problems and perspectives for the future. *Quaternary International* 239, 70e85.

- Hall T.A., 1999, BioEdit: a user-friendly biological sequence alignment editor and analysis program for Windows 95/98/NT. *Nucleic Acids Symp. Ser.* 41, 95–98.
- Huvet A., Lapègue S., Magoulas A., Boudry P., 2000, Mitochondrial and nuclear DNA phylogeography of *Crassostrea angulata*, the Portuguese oyster endangered in Europe. *Conserv. Gen.* 1, 251–262.
- Huvet A., Gérard A., Ledu C., Phélipot P., Heurtebise S., Boudry P., 2002, Is fertility of hybrids enough to conclude that the oysters *Crassostrea gigas* and *Crassostrea angulata* are the same species? *Aquat. Living Resour.* 15, 45–52.
- Huvet A., Fabioux C., McCombie H., Lapègue S., Boudry P., 2004, Natural hybridization between genetically differential populations of *Crassostrea gigas* and *C. angulata* highlighted by sequence variation in flanking regions of a microsatellite locus. *Mar. Ecol. Prog. Ser.* 272, 141–152.
- Imai T., Sakai S., 1961, Study of breeding of Japanese oyster, *Crassostrea gigas*. *Tohoku J. Agric. Res.* 12, 125–171.
- Lallias D., Boudry P., Batista F.M., Beaumont A., King J.W., Turner J.R., Lapègue S., 2015, Invasion genetics of the Pacific oyster *Crassostrea gigas* in the British Isles inferred from microsatellite and mitochondrial markers. *Biol. Invasions* 17, 2581–2595.
- Lapègue S., Batista F.M., Heurtebise S., Yu Z., Boudry P., 2004, Evidence for the presence of the Portuguese oyster, *Crassostrea angulata*, in Northern China. *J. Shellfish Res.* 23, 759–763.
- López-Flores I., Hérran R., Garrido-Ramos M.A., Boudry P., Ruiz-Rejón C., Ruiz-Rejón M., 2004, The molecular phylogeny of oysters based on a satellite DNA related to transposons. *Gene* 339, 181–188.
- Mathers, N.F., Wilkins N.P., Walne P.R., 1974, Phosphoglucose isomerase and esterase phenotypes in *Crassostrea angulata* and *C. gigas*. *Biochem. System. Ecol.* 2, 93–96.
- Menzel R.W., 1974, Portuguese and Japanese oysters are the same species. *J. Fisheries Res. Board Canada* 31, 453–456.
- Moehler J., Wegner K.M., Reise K., Jacobsen S., 2011, Invasion genetics of Pacific oyster *Crassostrea gigas* shaped by aquaculture stocking practices. *J. Sea Res.* 66, 256–262.
- O’Foighil D., Gaffney P.M., Wilbur A.E., Hilbish T.J., 1998, Mitochondrial cytochrome oxidase I gene sequences support an Asian origin for the Portuguese oyster *Crassostrea angulata*. *Mar. Biol.* 131, 497–503.
- Qin J., Huang Z., Chen J., Zou Q., You W., Ke C., 2012, Sequencing and de novo analysis of *Crassostrea angulata* (Fujian Oyster) from 8 different developing phases using 454 GSFlx. *PLoS One* 7, e43653.
- Ramos-Onsins S.E., Rozas J., 2002, Statistical properties of new neutrality tests against population growth. *Mol. Biol. Evol.* 19, 2092–2100.
- Ranson G., 1960, Les prodissoconques (coquilles larvaires) des ostréides vivants. *Bull. Inst. Océanogr. Monaco* 1, 1–41.
- Ren J., Liu X., Jiang F., Guo X., Liu B., 2010, Unusual conservation of mitochondrial gene order in *Crassostrea* oysters: evidence for recent speciation in Asia. *BMC Evol. Biol.* 10, 394.
- Ren J., Hou Z., Wang H., Sun M.A., Liu X., Liu B., Guo, X., 2016, Intraspecific variation in mitogenomes of five *Crassostrea* species provides insight into oyster diversification and speciation. *Mar. Biotechnol.* 18, 242–254.
- Rozas J., Sanchez-DelBarrio J.C., Messeguer X., Rozas R., 2003, DnaSP, DNA polymorphism analyses by the coalescent and other methods. *Bioinformatics* 19, 2496–2497.
- Seebens H., Gastner M., Blasius B., 2013, The risk of marine bioinvasion caused by global shipping. *Ecology Letters* 16(6), 782–790.
- Sekino M., Yamashita H., 2013, Mitochondrial DNA barcoding for Okinawan oysters: a cryptic population of the Portuguese oyster *Crassostrea angulata* in Japanese waters. *Fish. Sci.* 79, 61–76.
- Simberloff D., Martin J.-L., Genovesi P., Maris V., Wardle D.A., Aronson J., Courchamp F., Galil B., García-Berthou E., Pascal M., Pyšek P., Sousa R., Tabacchi E., Vila M., 2013, Impacts of biological invasions: what’s what and the way forward. *Trends Ecol. Evol.* 28, 58–66.
- Steinrücken M., Birkner M., Blath J., 2013, Analysis of DNA sequence variation within marine species using Beta-coalescents. *Theor. Popul. Biol.* 87, 15–24.
- Tajima F., 1989, Statistical method for testing the neutral mutation hypothesis by DNA polymorphism. *Genetics* 123, 585–595.
- Thompson J.D., Higgins D.G., Gibson T.J., 1994, CLUSTALW: improving the sensitivity of progressive multiple sequence alignment through sequence weighting, position specific gap penalties and weight matrix choice. *Nucleic Acids Res.* 22, 4673–4680.
- Wang H., Qian L., Liu X., Zhang G., Guo X., 2010, Classification of a common cupped oyster from southern China. *J. Shellfish Res.* 29, 857–866.
- Xia J., Yu Z., Kong X., 2009, Identification of seven *Crassostrea* oysters from the South China Sea using PCR-RFLP analysis. *J. Mollusc. Stud.* 75, 139–146.