



HAL
open science

TCF21 is related to testis growth and development in broiler chickens

Hui Zhang, Wei Na, Hong-Li Zhang, Ning Wang, Zhi-Qiang Du, Shou-Zhi Wang, Zhi-Peng Wang, Zhiwu Zhang, Hui Li

► **To cite this version:**

Hui Zhang, Wei Na, Hong-Li Zhang, Ning Wang, Zhi-Qiang Du, et al.. TCF21 is related to testis growth and development in broiler chickens. *Genetics Selection Evolution*, 2017, 49 (1), pp.25. <10.1186/s12711-017-0299-0>. <hal-01479154>

HAL Id: hal-01479154

<https://hal.science/hal-01479154v1>

Submitted on 28 Feb 2017

HAL is a multi-disciplinary open access archive for the deposit and dissemination of scientific research documents, whether they are published or not. The documents may come from teaching and research institutions in France or abroad, or from public or private research centers.

L'archive ouverte pluridisciplinaire **HAL**, est destinée au dépôt et à la diffusion de documents scientifiques de niveau recherche, publiés ou non, émanant des établissements d'enseignement et de recherche français ou étrangers, des laboratoires publics ou privés.



HAL Authorization

RESEARCH ARTICLE

Open Access



TCF21 is related to testis growth and development in broiler chickens

Hui Zhang¹, Wei Na¹, Hong-Li Zhang¹, Ning Wang¹, Zhi-Qiang Du¹, Shou-Zhi Wang¹, Zhi-Peng Wang¹, Zhiwu Zhang^{1,2*} and Hui Li^{1*}

Abstract

Background: Large amounts of fat deposition often lead to loss of reproductive efficiency in humans and animals. We used broiler chickens as a model species to conduct a two-directional selection for and against abdominal fat over 19 generations, which resulted in a lean and a fat line. Direct selection for abdominal fat content also indirectly resulted in significant differences ($P < 0.05$) in testis weight (TeW) and in TeW as a percentage of total body weight (TeP) between the lean and fat lines.

Results: A total of 475 individuals from the generation 11 (G_{11}) were genotyped. Genome-wide association studies revealed two regions on chicken chromosomes 3 and 10 that were associated with TeW and TeP. Forty G_{16} individuals (20 from each line), were further profiled by focusing on these two chromosomal regions, to identify candidate genes with functions that may be potentially related to testis growth and development. Of the nine candidate genes identified with database mining, a significant association was confirmed for one gene, *TCF21*, based on mRNA expression analysis. Gene expression analysis of the *TCF21* gene was conducted again across 30 G_{19} individuals (15 individuals from each line) and the results confirmed the findings on the G_{16} animals.

Conclusions: This study revealed that the *TCF21* gene is related to testis growth and development in male broilers. This finding will be useful to guide future studies to understand the genetic mechanisms that underlie reproductive efficiency.

Background

Body weight has been intensively selected for more than half a century and will continue to be one of the most important economic traits in broiler chicken breeding programs. However, the results of previous studies showed that selection for increased growth rate often results in a number of undesirable traits, including ascites, lameness, reduced fertility, and reduced resistance to infectious diseases [1]. Selection for rapid growth has also been accompanied by increased fat deposition in chickens [2, 3]. Therefore, multiple selection criteria must

be applied beyond body weight, including abdominal fat and reproduction traits.

Studies on related traits in other species, including those on obesity and fertility in humans, provide some insight towards the overall improvement of broiler production. For example, the relationship between human obesity and fertility traits has been investigated for many years and the results indicate that obesity in men is positively associated with infertility [4]. A recent study reported that androgen and sex hormone-binding globulin (SHBG) serum levels were reduced in obese men and estrogen levels were increased, without a compensatory increase in the follicle-stimulating hormone (FSH) [4].

The chicken (*Gallus gallus*) is an important animal model that can be used to bridge the evolutionary gap between mammals and other vertebrates [5]. Two broiler lines at the Northeast Agricultural University (China) were divergently selected for 19 generations for abdominal fat content (named the NEAUHLF lines), one for high

*Correspondence: zhiwu.zhang@wsu.edu; lihui@neau.edu.cn

¹ Key Laboratory of Chicken Genetics and Breeding, Ministry of Agriculture; Key Laboratory of Animal Genetics, Breeding and Reproduction, Education Department of Heilongjiang Province; College of Animal Science and Technology, Northeast Agricultural University, Harbin 150030, People's Republic of China
Full list of author information is available at the end of the article

abdominal fat (fat line) and one for low abdominal fat (lean line) [see Additional file 1: Table S1]. Starting from generation 4, the two lines displayed significant differences in abdominal fat in 7-week-old birds [6]. Excessive fat deposition not only decreases feed efficiency but is also associated with decreases in reproductive efficiency in male and female chickens [7, 8]. A previous study on chickens indicated that small testes were often associated with poor fertility [9].

In this study, we focused on testis weight (TeW) and testis percentage of body weight at 7 weeks of age (TeP = TeW/BW7) in broiler chickens to: (1) conduct genome-wide association studies (GWAS) to identify regions that harbor genes controlling testis growth, (2) identify candidate genes in these regions, and (3) profile candidate genes for future cloning studies. We were able to identify genetic loci that are involved in the reproduction of broilers, which could be useful in targeted breeding strategies to accelerate the breeding of healthy, high-quality broilers.

Methods

Ethics statement

All experiments involving animals were conducted according to the guidelines for the care and use of experimental animals, established by the Ministry of Science and Technology of the People's Republic of China (Approval Number: 2006-398). Experimental animal work was also approved by the Laboratory Animal Management Committee of the Northeast Agricultural University.

Genome-wide association study (GWAS)

Broiler chickens used in this study were from two Northeast Agricultural University broiler lines, divergently selected for abdominal fat content (named NEAUHLF lines). NEAUHLF lines have been selected since 1996 using abdominal fat percentage (AFP) [AFP = abdominal fat weight (AFW)/body weight at 7 weeks of age (BW7)] and plasma very low-density lipoprotein (VLDL) levels as selection criteria. Details on these two lines are in Zhang et al. [10]. The body weight of the male birds at 1, 3, 5, and 7 weeks of age (BW1, 3, 5, and 7) were measured. The male birds were slaughtered at 7 weeks of age and testis weight (TeW), testis percentage of BW7 (TeP = TeW/BW7), AFW (abdominal fat weight), and AFP (abdominal fat percentage) were recorded. A total of 475 individuals from generation 11 (G_{11}), which was the latest generation at that time, were used in the genome-wide association studies (GWAS). Descriptive statistics of AFW, AFP, TeW and TeP were obtained by using JMP 4.0 [11].

Genomic DNA was extracted from blood by using the classical phenol/chloroform method and diluted to 50 ng/ μ L. The quality and concentration of genomic DNA fulfilled the requirements for the Illumina Infinium

SNP genotyping platform. Genotyping using the Illumina 60 k Chicken SNP BeadChip was carried out at the Illumina-certified service provider, DNA LandMarks Inc., Canada. Quality controls were assessed with GenomeStudio v2008.1 [12]. Of the 57,636 SNPs, 45,611 had a minor allele frequency (MAF) higher than 5% and a call rate of 95% in the combined dataset for birds from the lean and fat lines and were retained for further analyses. Individuals with a pedigree error of more than 5% or with missing SNP genotypes were removed. The SNPs used in the current study [see Additional file 2: Table S2] were previously described in detail by Zhang et al. [10].

GWAS was carried out in PLINK using the linear regression analysis method [13]. We have performed multiple analyses to eliminate the potential false positives due to the confounding with subpopulation or contemporary groups. Three models including line (fat and lean), the first two principal components (PC), and the first three PC as covariates, respectively, were used to carry out the GWAS. BW7 was also used as a covariate for TeW. Polygenic effects were predicted by using the mixed linear model with variance and covariance structure defined by the kinship derived from all the markers. The results of the third model which included three PC as covariates are presented in the current study. We used the genome-wide 5% type I error after Bonferroni correction as the genome-wide significance level. For two traits and 45,611 SNPs, the threshold P value for declaring genome-wide significance was $0.05/(2 \times 45,611) = 5.48 \times 10^{-7}$. The Manhattan plots of the P values for all SNPs associated with TeW and TeP were plotted using SNPEVG1 version 2.1 [14]. Gene locations and information were mined from the Ensembl chicken genome galGal 3 [15].

GWAS were also carried out with mixed-model statistical packages, including GAPIT (version 1) [16], Efficient Mixed-Model Association eXpedited (EMMAX beta) [17], the Genome-wide Rapid Association using Mixed Model and Regression (GRAMMAR) approach, which is implemented in GenABEL version 1.8-0 [18], and Genome-wide Efficient Mixed-Model Association (GEMMA version 0.94) [19], using line (fat, lean) and BW7 as covariates for TeW, and line as the covariate for TeP. The random effects refer to polygenic effects of individuals, which are known as animal genetic effects. The variance and covariance structure is defined by the kinship matrix derived from all the markers. The kinship is known as the genomic relationship matrix.

mRNA expression analysis

Based on the GWAS results, nine genes that may play a role in TeW and TeP were selected for further mRNA expression analyses. Birds from two generations, G_{16} and G_{19} , were used to carry out the mRNA expression

analyses and compared to assess their credibility. Forty birds (20 from the lean and 20 from the fat line) and 30 birds (15 from the lean and 15 from the fat line) were randomly chosen from the G_{16} and G_{19} populations, respectively. These birds were slaughtered at 7 weeks of age and testis (Te) tissue was isolated, weighed, immediately frozen in liquid nitrogen, and then stored at -80°C .

Total RNA was extracted from 50 to 100 mg bulk testis tissue using Trizol reagent (Invitrogen, Carlsbad, CA, USA) according to the manufacturer's recommendations. RNA concentrations were measured by spectrophotometry (OD at 260 nm) and their integrity was evaluated using the $\text{OD}_{260}/\text{OD}_{280}$ ratio (>1.8). cDNA was prepared with oligo (dT)-primed (Takara, Daliang, China) reverse transcription using ImProm-II Reverse Transcriptase (Promega, Madison, WI, USA). After reverse transcription, the target cDNAs were quantified by real-time PCR using an ABI 7500 system and the SYBR Green Master Mix (Roche, Basel, Switzerland). *Glyceraldehyde-3-phosphate dehydrogenase (GAPDH)* and *TATA box-binding protein (TBP)* were used as internal reference genes. The primer sequences used to analyze gene expression are in

Table S3 [see Additional file 3: Table S3]. The PCR cycling conditions included an initial step at 50°C for 2 min, a denaturation step at 95°C for 10 min and 40 cycles at 95°C for 15 s and 60°C for 1 min. The mRNA expression levels were analyzed using the ABI 7500 software v2.0.5. Results were expressed as $2^{-\Delta C_t}$ with $\Delta C_t = C_{t_{ij}} - C_{t_{rp}}$ where $C_{t_{ij}}$ and $C_{t_{rp}}$ are the C_t for target gene i and reference gene r in sample j [20]. Statistical significance of differences in mRNA expression levels between groups was determined with a t test. The correlations between the expression level of the genes and TeW and TeP was also calculated. A P value <0.05 was considered significant.

Results

Line differences in testis weight and testis percentage

Lean and fat broiler chicken lines were selected for 19 generations. Starting from generation 4 (G_4), birds in the fat line had significantly higher ($P < 0.05$) abdominal fat percentages [AFP = abdominal fat weight/body weight at 7 weeks of age (BW7)] than birds in the lean line (Fig. 1a). No significant differences ($P > 0.05$) in BW7 were observed between the two lines (Fig. 1b). However, significant line

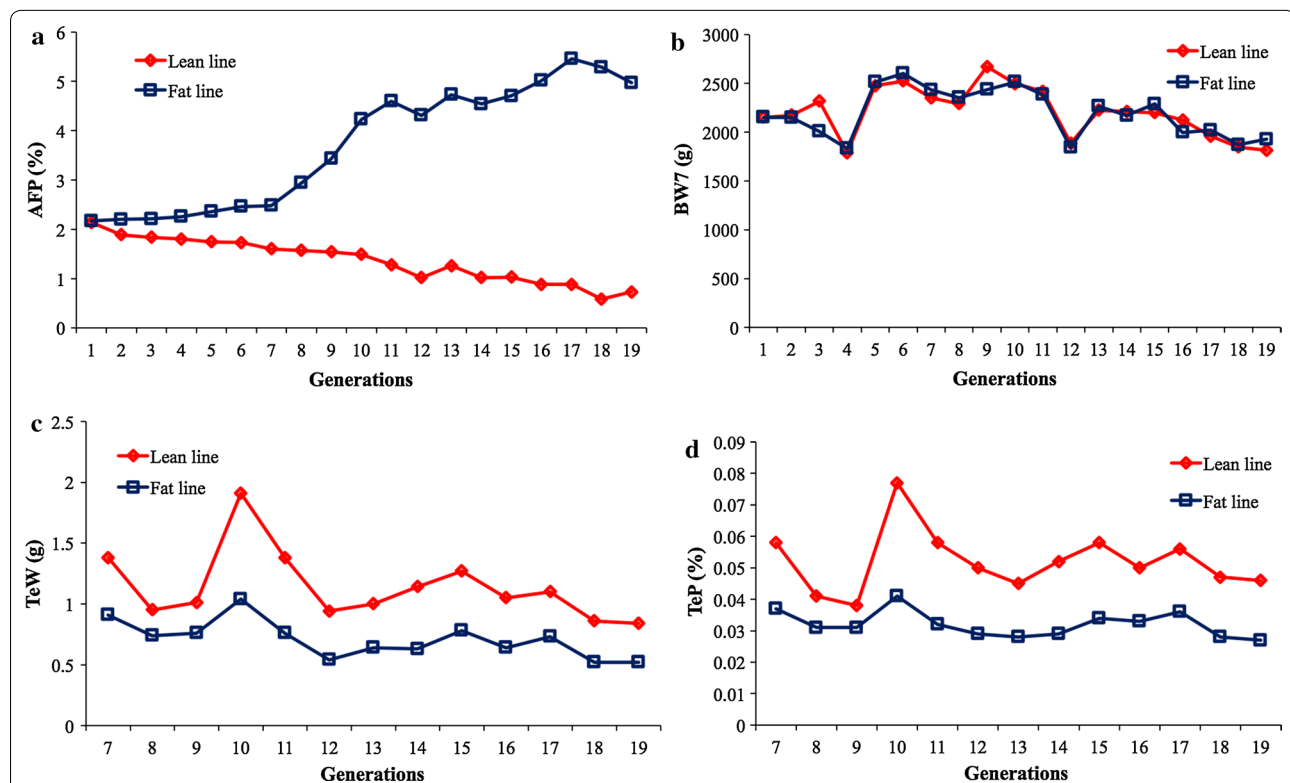


Fig. 1 Observed phenotypic means of male broiler chickens from the *lean* and *fat* lines that were selected for abdominal fat over 19 generations. The *two* lines originated from the same population at generation 1. Starting from generation G_4 , significant differences ($P < 0.05$) in abdominal fat percentage (AFP) were observed at 7 weeks of age (a). A sevenfold difference was found between the *two* lines in the last generation (G_{19}); however, body weight at the same age (BW7) remained similar between the *fat* and *lean* lines across all generations (b). Testis weight (TeW) was recorded (c) and testis percentage (TeP) was calculated (d). Both TeW and TeP exhibited significant differences between the *lean* and *fat* lines from G_7 forward

differences ($P < 0.05$) were also found for TeW and TeP in G_7 to G_{19} (Table 1; Fig. 1c, d). When these differences appeared is unclear because no phenotypic records were recorded for these two traits before G_7 . Interestingly, we also noticed that the differences between the fat and lean lines existed across generations, from G_7 to G_{19} .

Genotyping

The 60 k chicken SNP BeadChip, produced by Illumina Inc. at the beginning of 2009 [21], was used to conduct GWAS. A total of 475 birds from G_{11} were selected for genotyping with the 60 k chicken SNP BeadChip; 203 and 272 birds from the lean and fat lines, respectively. After quality control, 45,611 SNPs were retained for further analyses [see Additional file 2: Table S2]. The average distance between adjacent SNPs was 22 kb and 80% of the SNP intervals were smaller than 30 kb (Fig. 2a). Approximately 46% of the SNPs had a minor allele frequency (MAF) between 0.3 and 0.5 within both lines; the average MAF was 0.27 (Fig. 2b).

Genome-wide association studies

We conducted the first GWAS using PLINK v1.07 software [13]. To control the inflation of P values due to the confounding with population structure of the lean and fat lines, we tested several models with different covariates in PLINK. The first model fitted line (lean or fat) as a covariate in PLINK. We also carried out principal component analysis (PCA) on the SNPs. The first principal component (PC) clearly separated the two lines. The second PC highlighted genetic differences among individuals in the lean line and the third PC highlighted genetic differences among individuals in the fat line (Fig. 2c, d). Therefore, the

second and third models fitted the first two and the first three PC as covariates, respectively, in PLINK. All three models generated similar results. The results obtained by using the first three PC for TeW and TeP are in Fig. 3.

Both Manhattan plots and $Q-Q$ plots revealed that the P values generated by PLINK were inflated. Therefore, we incorporated kinship among individuals in mixed linear models (MLM) to control the inflation of P values, using four software packages: (1) GAPIT (version 1) [16], (2) EMMAX (beta) [17], (3) GRAMMAR [18], and (4) GEMMA (version 0.94) [19]. As expected, the mixed linear models (MLM) controlled the inflation of P values well. More than 97% of the SNPs were not associated with the two measured traits, TeW and TeP [see Additional file 4: Figure S1]. Based on a Bonferroni threshold (P value $< 5.48 \times 10^{-7}$) for multiple-test correction with a type I error of 5%, 18 and 23 SNPs were found to be significantly associated with TeW and TeP, respectively. Details of these SNPs are in Table 2. They were mainly located on two peaks, one on chicken chromosome 3 and one on chromosome 10. These two peaks were consistent across all analyses. The region on chromosome 3 was 5.63 Mb long (between 59,757,561 and 65,388,568 bp based on the location of the SNPs) and the region on chromosome 10 was 4.72 Mb long (between 8,478,019 and 13,195,918 bp based on the location of the SNPs).

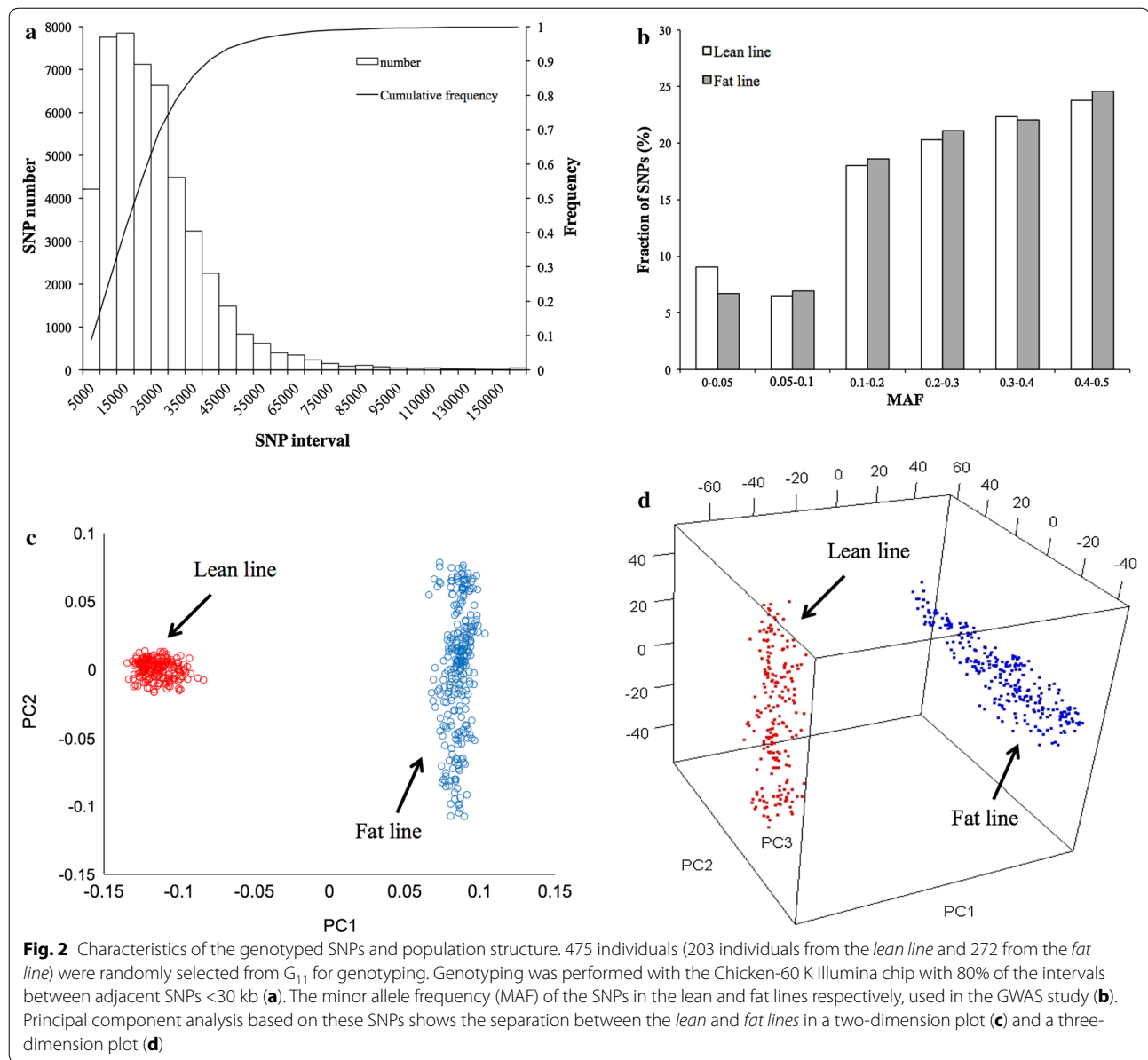
Identification of candidate genes

Nearby (about 2 Mb region) and within these two regions of interest on chromosomes 3 and 10, 85 and 62 annotated genes were present in the Ensemble database, respectively. Based on database mining and literature searches, we identified nine candidate genes with known

Table 1 Least square means of TeW and TeP for the fat (F) and lean (L) lines

Generation	Individuals	TeW (L)	TeW (F)	TeP (L)	TeP (F)
7	472	1.38 ± 0.99 ^A	0.91 ± 0.66 ^B	0.058 ± 0.041 ^A	0.037 ± 0.025 ^B
8	387	0.95 ± 0.54 ^A	0.74 ± 0.36 ^B	0.041 ± 0.023 ^A	0.031 ± 0.015 ^B
9	383	1.01 ± 0.62 ^A	0.76 ± 0.50 ^B	0.038 ± 0.023 ^A	0.031 ± 0.021 ^B
10	627	1.91 ± 1.55 ^A	1.04 ± 0.72 ^B	0.077 ± 0.063 ^A	0.041 ± 0.028 ^B
11	475	1.38 ± 1.02 ^A	0.76 ± 0.55 ^B	0.058 ± 0.045 ^A	0.032 ± 0.023 ^B
12	521	0.94 ± 0.73 ^A	0.54 ± 0.26 ^B	0.050 ± 0.036 ^A	0.029 ± 0.014 ^B
13	598	1.00 ± 0.78 ^A	0.64 ± 0.29 ^B	0.045 ± 0.034 ^A	0.028 ± 0.012 ^B
14	612	1.14 ± 0.80 ^A	0.63 ± 0.32 ^B	0.052 ± 0.035 ^A	0.029 ± 0.015 ^B
15	538	1.27 ± 1.07 ^A	0.78 ± 0.44 ^B	0.058 ± 0.049 ^A	0.034 ± 0.018 ^B
16	665	1.05 ± 0.95 ^A	0.64 ± 0.37 ^B	0.050 ± 0.044 ^A	0.033 ± 0.017 ^B
17	627	1.10 ± 1.07 ^A	0.73 ± 0.49 ^B	0.056 ± 0.053 ^A	0.036 ± 0.024 ^B
18	583	0.86 ± 0.70 ^A	0.52 ± 0.33 ^B	0.047 ± 0.037 ^A	0.028 ± 0.016 ^B
19	509	0.84 ± 0.56 ^A	0.52 ± 0.20 ^B	0.046 ± 0.030 ^A	0.027 ± 0.010 ^B

Statistics include number of individuals, mean, and standard deviation. Significance tests were performed between the fat (F) and lean (L) lines for testis weight (TeW) and testis percentage (TeP), separately. For each generation, different notations (^A or ^B) indicate a significant difference between the two lines at a significance level of 5%



functions that are directly related to testis growth and development. These nine genes are *MAP7* (*microtubule-associated protein 7*), *TCF21* (*transcription factor 21*), *EPB41L2* (*erythrocyte membrane protein band 4.1-like 2*), *GJA1* (*gap junction protein, alpha 1*), *GPRC6A* (*G protein-coupled receptor, family C, group 6, member A*), *TEX9* (*testis expressed 9*), *CYP19A1* (*cytochrome P450, family 19, subfamily A, polypeptide 1*), *PDE8A* (*phosphodiesterase 8A*), and *SH3GL3* (*SH3-domain GRB2-like 3*).

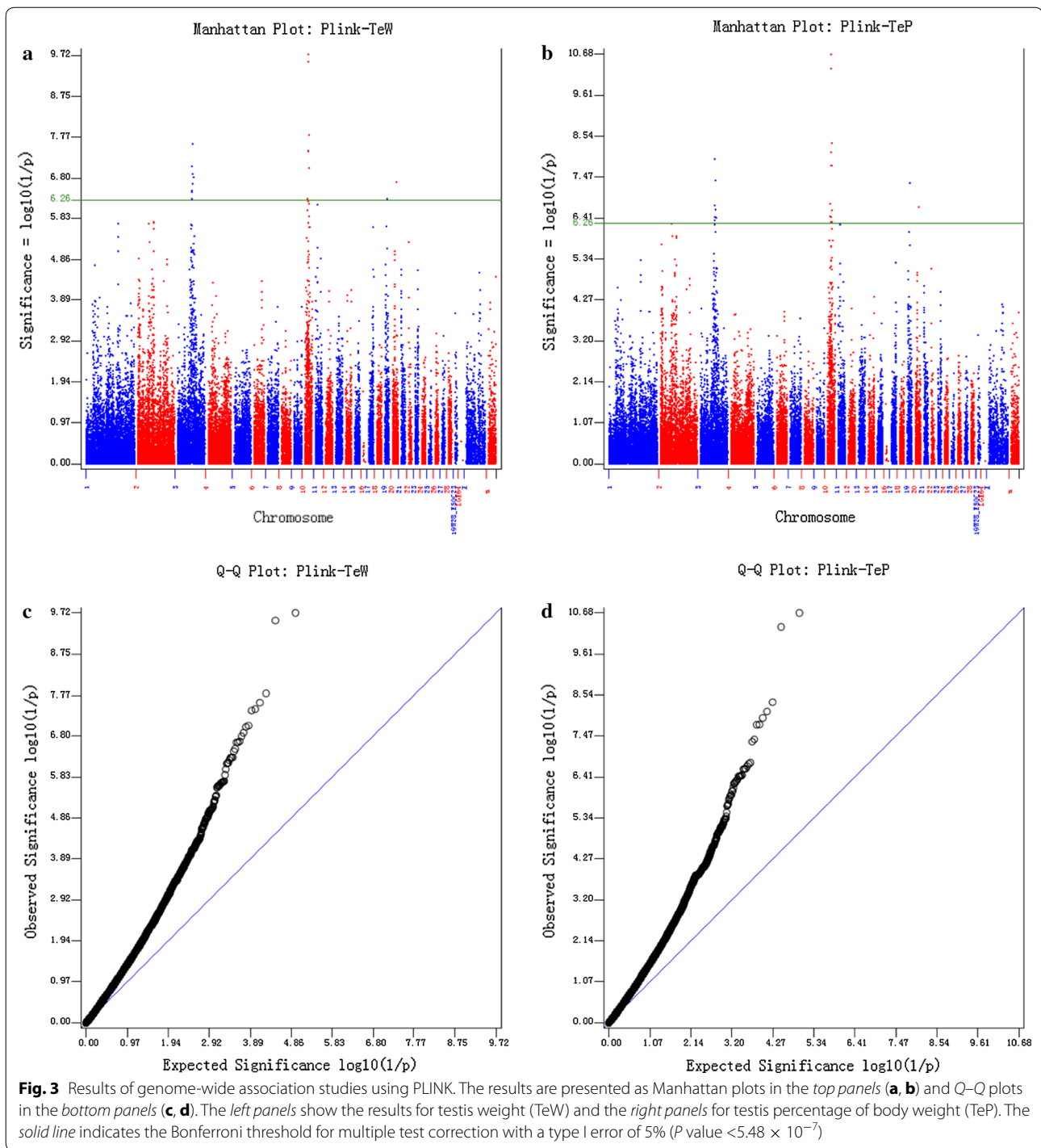
Analysis of mRNA expression for the nine candidate genes

To investigate the roles of these nine genes, we used real-time quantitative (RT-PCR) to measure their mRNA expression levels in the testis tissue of NEAUHLF

individuals. For this analysis, we randomly chose 20 birds from each line in G_{16} . *GAPDH* and *TBP* were used as two internal reference genes.

First, we determined the expression level of the nine genes in testis tissue. Using pooled cDNAs of all 40 individuals across the two lines, we found that the expression levels of two genes (*GPRC6A* and *CYP19A1*) were lower than those of the other seven genes. However, all nine genes were expressed in the testis tissue (Fig. 4a), which suggests that they may all play roles in the growth and development of the testis.

Associations between the mRNA expression levels of each of these nine genes with TeW and TeP for the 40 birds were further analyzed. Using both *GAPDH* and



TBP as internal reference genes, only the mRNA expression level of *TCF21* was significantly correlated ($P < 0.05$) with TeW and TeP (Fig. 4b). We also compared the mRNA expression levels of these nine genes between the two lines. The results indicated that the mRNA expression levels of *TCF21*, *TEX9*, and *GJA1* differed significantly ($P < 0.05$) between the lean and fat lines (Fig. 4c).

However, only the expression level of *TCF21* was significantly associated ($P < 0.05$) with TeW and TeP, and significantly different ($P < 0.05$) between the two lines.

Additional validation on *TCF21*

To further confirm the role of the *TCF21* gene across generations, we conducted a second mRNA expression

Table 2 SNPs in candidate genes significantly associated with TeW and TeP

SNP	Chr	Position	P value (TeW)	P value (TeP)	Candidate gene	Gene position (Mb)
Gga_rs14364352	3	59,757,561	5.13E-07	1.81E-07	<i>MAP7</i>	56.99–57.10
					<i>TCF21</i>	58.22–58.22
					<i>EPB41L2</i>	59.61–59.68
Gga_rs14364587	3	60,099,912	8.98E-08	1.15E-08	–	–
Gga_rs14705827	3	60,784,548	3.22E-07	3.73E-07	–	–
GGaluga224607	3	61,317,809	3.66E-07	4.53E-07	–	–
Gga_rs14365191	3	61,522,182	2.25E-07	3.66E-07	–	–
GGaluga224679	3	61,526,696	1.33E-07	2.42E-07	–	–
Gga_rs16286755	3	64020868	2.58E-08	4.14E-08	<i>GJA1</i>	64.41–64.42
Gga_rs16287113	3	64,522,837	2.26E-07	9.13E-07	–	–
GGaluga225462	3	65,388,568	1.61E-07	3.83E-07	<i>GPRC6A</i>	66.36–66.37
Gga_rs14748077	10	8,478,019	9.78E-07	3.53E-07	–	–
GGaluga068209	10	8,928,839	5.14E-07	1.68E-07	<i>TEX9</i>	8.70–8.75
GGaluga068594	10	10,330,735	5.89E-07	3.80E-07	–	–
GGaluga068660	10	10,573,304	3.95E-08	1.70E-08	<i>CYP19A1</i>	10.55–10.57
GGaluga068662	10	10,607,832	3.66E-08	7.77E-09	–	–
Gga_rs14703430	10	10,647,843	2.90E-10	4.89E-11	–	–
Gga_rs14005067	10	10,742,112	1.91E-06	5.06E-07	–	–
Gga_rs14946630	10	10,792,181	1.92E-10	2.11E-11	–	–
Gga_rs15575830	10	11,983,111	1.33E-06	4.90E-07	–	–
Gga_rs15575901	10	12,159,992	6.91E-07	2.48E-07	–	–
Gga_rs14947056	10	12,323,517	6.91E-07	2.48E-07	–	–
Gga_rs14005930	10	12,487,480	1.55E-08	4.47E-09	<i>PDE8A</i>	12.64–12.75
Gga_rs14006710	10	13,195,918	9.67E-08	1.72E-08	<i>SH3GL3</i>	13.10–13.15

Associated SNPs were determined by GWAS on testis weight (TeW) and testis percentage (TeP). GWAS were performed using PLINK with three principal components as covariates to control for population structure

analysis of *TCF21* using 15 individuals from each line that were randomly chosen from G_{19} . The expression level of the *TCF21* gene in the lean line was again significantly lower ($P < 0.05$) than that in the fat line (Fig. 4d and Figure S2 [see Additional file 5: Figure S2]). This finding confirmed the results obtained on the G_{16} birds. Combined together, these results suggest that *TCF21* is a major gene involved in testis growth and development in chickens.

We also observed that the frequencies of the allele (*G*) of the *TCF21*-associated SNP (Gga_rs14364352) with higher TeW and TeP differed between the lean line (43.6%) and the fat line (17.8%) in generation 11. More importantly, differences in testis traits between genotypes at this SNP displayed similar trends in the lean and fat lines, which means that, in both lines, *GG* is always associated with higher TeW and TeP than *AA* and *AG* (Fig. 5). The *GG* genotype exhibited an additive effect in the lean line. The individuals with the *GG* genotype had testis pairs that weighed about one gram more than individuals with the *AA* genotype, whereas individuals with the *AG* genotype had intermediate values. The genotypes of the *TCF21*-associated SNP had a dominant effect in the fat line, with *A* being the

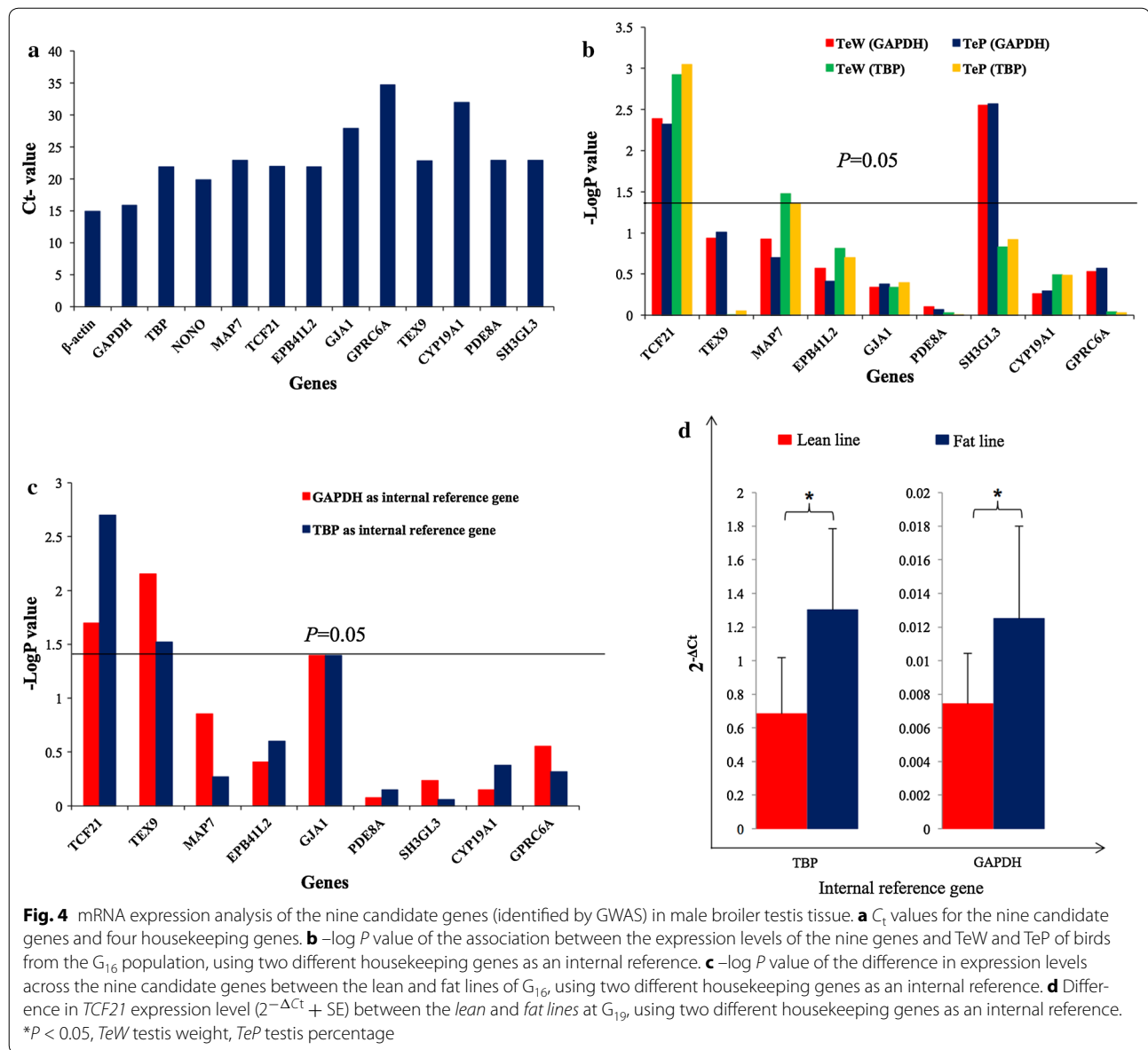
recessive allele. Consequently, the TeW of individuals with *AA* or *AG* genotypes were similar and were about 0.5 g less than the TeW of individuals with the *GG* genotype.

Discussion

Differences in testis size between the lean and fat lines

The lean and fat broiler lines used in the current study were selected for and against abdominal fat content over 19 generations. Abdominal fat percentages were significantly different ($P < 0.05$) between the lean and fat lines from G_4 to G_{19} , while no significant differences ($P > 0.05$) were observed in BW7 (Fig. 1a, b). Therefore, these two lines were ideal populations to study the genetic mechanisms that underlie abdominal fat deposition.

Selection for abdominal fat content was the primary objective of the two divergently selected lines. We observed that birds from the fat line had a significantly smaller ($P < 0.05$) testis size (TeW and TeP) in early growth than birds from the lean line (Fig. 1c, d). Cellular development at 6 to 7 weeks of age determines the fertility of male broiler breeders [22]. Thus, 7-week-old broilers, as used in our study, reflect the fertility of adults.



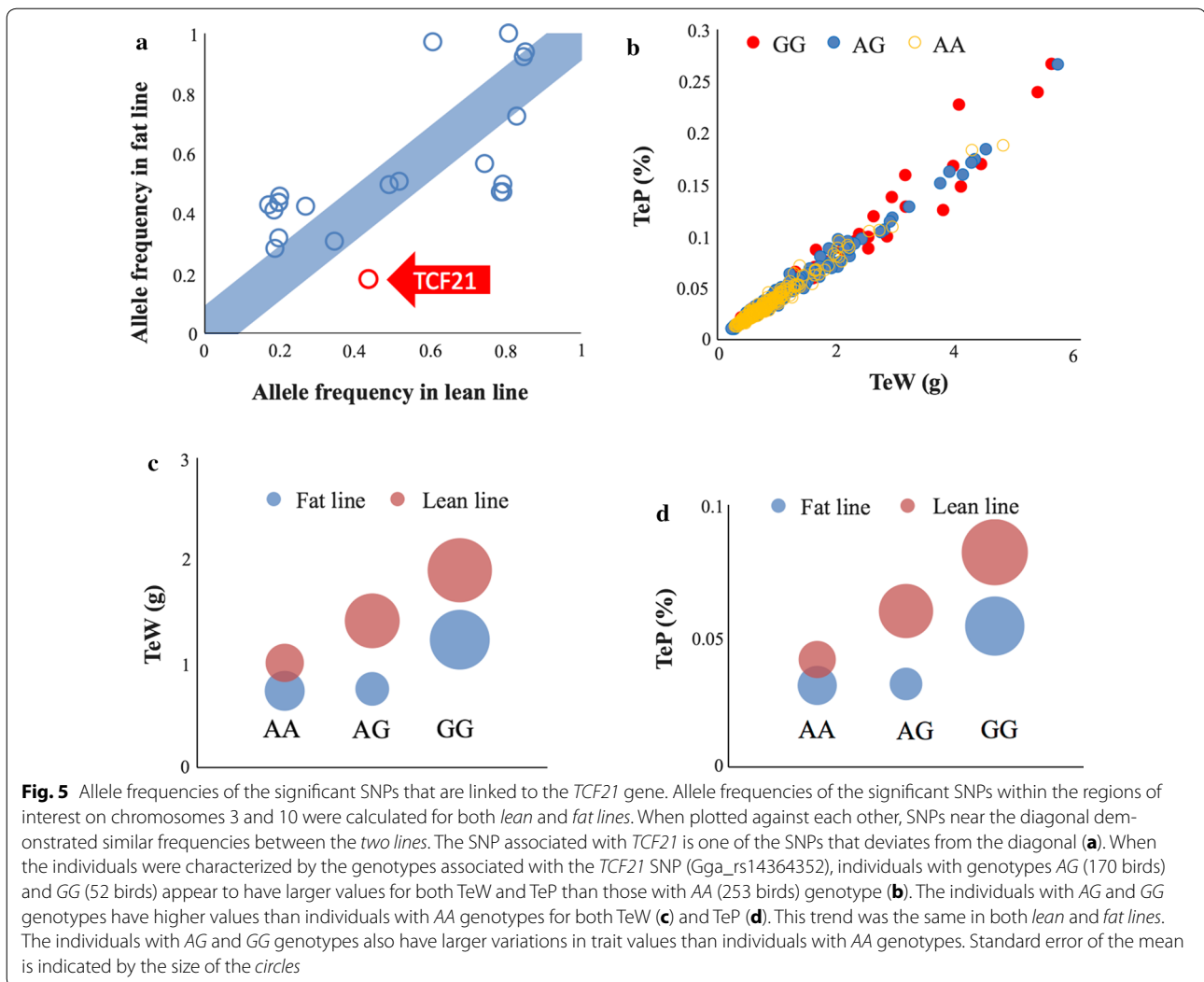
Testis size is controlled by genetic factors in both chicken and mice [22–26]. Roosters with small testes often have poor fertility [9]. Similar to findings in chicken, studies in humans have shown that obese men have an increased incidence of low fertility, with reduced serum levels of androgens and sex hormone-binding globulin (SHBG) and increased levels of estrogen [4].

Identification of candidate genes for testis growth and development

Using GWAS, two regions, i.e. one on chicken chromosome 3 (between 59.8 and 65.4 Mb) and one on chromosome 10 (between 8.5 and 13.2 Mb) were detected and found to be significantly associated ($P < 0.05$) with TeW and TeP (Fig. 3). These two regions were consistently

detected with PLINK, as well as with several other software packages: GAPIT, EMMAX, GenABEL (GRAMMAR) and GEMMA [see Additional file 4: Figure S1]. This substantial concordance was interesting, although the P values from the four latter analyses were less significant than those from PLINK [13]. These results indicate that these two regions may harbor genes that play a role in testis growth and development. Unfortunately, we found no QTL for reproduction performance of male broilers in these regions in the animal QTL database (<http://www.animalgenome.org/cgi-bin/QTLdb/index>).

We catalogued all genes that were located nearby and within these two regions on chromosomes 3 and 10, and identified 85 and 62 genes, respectively. Based on the known functions of these genes, we identified



nine candidate genes: *MAP7*, *TCF21*, *EPB41L2*, *GJA1*, *GPRC6A*, *TEX9*, *CYP19A1*, *PDE8A* and *SH3GL3*, which may be involved in testis growth and development.

The *TCF21* gene is important for testis growth and development in broiler chickens

To further investigate these nine candidate genes, we analyzed their mRNA expression levels. For all nine genes, we calculated the following: (1) associations of their mRNA expression levels with TeW and TeP, and (2) differences in mRNA expression levels between the two lines. We found that *TCF21* was the only gene that had both an mRNA expression level that was significantly associated ($P < 0.05$) with TeW and TeP and that differed significantly ($P < 0.05$) between the two lines. This result was found for both G_{16} and G_{19} birds, i.e. birds from the fat line consistently exhibited significantly higher

($P < 0.05$) *TCF21* expression levels than birds from the lean line.

Frequencies of allele *G* at the most significant SNP (Gga_rs14364352) near *TCF21*, which is associated with higher testicular weight, differed substantially between the fat (17.8%) and lean (43.6%) lines. Because the number of individuals with all three genotypes in the lean and fat lines respectively was too small, we did not carry out an analysis of *TCF21* expression between different genotypes.

To the best of our knowledge, there is only one article in the literature on the function of *TCF21* in chickens, which showed that *TCF21* can inhibit the differentiation of epicardium-derived cells into smooth muscle in the developing heart [27]. In chickens, humans, and mice, *TCF21* protein sequences share a high percentage of sequence similarity (91 to 92%) [see Additional

file 6: Table S4], which suggests that the chicken *TCF21* gene may have similar functions as the *TCF21* gene in humans and mice. In humans and mice, *TCF21* is known to play an important role in diseases such as hypertension, gastric cancer, and coronary heart disease [28–30]. In mice, *TCF21* is also the first direct downstream target of the male sex-determining factor, *SRY* [31, 32], and the knockout of *TCF21* results in male-to-female sex reversal in mice [33]. *SRY* binds to the *TCF21* promoter and activates gene expression [32]. *TCF21* and *SRY* also have similar effects on Sertoli cell differentiation and embryonic testis development in rats [32]. Taken together, these results suggest that the *TCF21* gene may play an important role in sex differentiation and testis development in chicken. In addition, our study showed that the birds from the lean line, with higher TeW and TeP, had significantly lower ($P < 0.05$) *TCF21* expression levels than birds from the fat line.

It is interesting to note that, in chickens, the relationship between *TCF21* expression and testis size is opposite to that observed in mice and rats, i.e. birds from the fat line had higher *TCF21* expression levels and smaller testes, whereas in mice and rats *TCF21* gene is a positive transcriptional regulation factor. In addition, in mice and rats *SRY* binds to the *TCF21* promoter and activates gene expression [32] but the chicken genome contains no *SRY* gene. Thus, our findings indicate that the *TCF21* gene may affect testis growth and development in chickens through a different mechanism than in mice or rats.

It has also been shown that the *TCF21* gene (1) is expressed in white but not brown adipocytes, which means that *TCF21* is specific to white fat [34–36], and (2) can positively regulate the expression of bone morphogenetic protein 4 (*BMP4*). *BMP4* can commit pluripotent mesenchymal cells to form white adipocytes [37], which suggests that *TCF21* may have a potential role in adipogenesis.

Studies on humans and mice indicated that *TCF21* may play an important role in both adipocyte development and testis growth, and thus, these two processes may be closely related. In our study, we found that chickens with high AFW (or AFP) often had low TeW (or TeP) (Table 1), which agrees with findings in humans and mice. Overall, these results suggest that the chicken *TCF21* may not only be important for testis growth, but also play a role in abdominal fat deposition but further studies are required for confirmation.

A previous selective sweep analysis using the same dataset [38] did not find a significant signal for the coding region of *TCF21* (at the position of 58.22 Mb on chromosome 3). However, a nearby region (59.3–64.7 Mb) contained seven core haplotypes with a relative extended haplotype homozygosity (REHH) P value < 0.05 . Similarly,

we also detected a region (between 8.7 and 13.3 Mb) on chromosome 10 that contained 14 core haplotypes with a REHH P value < 0.05 [see Additional file 7: Table S5]. Thus, based on the results of the selective sweep analysis, the two regions on chromosomes 3 and 10 may harbor important genes for testis growth.

In addition to *TCF21*, the other eight candidate genes selected based on the GWAS also have known functions associated with reproductive and fat traits [see Additional file 8: Supplementary text]. However, together with the expression results of these genes, which showed that *TCF21* was the only gene that was differently expressed between the two lines and significantly associated with TeW and TeP, we focused on *TCF21* as an important gene for testis growth and development in broiler chickens.

Conclusions

Two chromosomal regions in the chicken, a 5.63 Mb region on chromosome 3 and a 4.72 Mb region on chromosome 10, were found to be associated with testis growth and development in broiler chickens. We identified nine genes within these regions that had functions related to testis growth and development: *MAP7*, *TCF21*, *EPB41L2*, *GJAI*, *GPRC6A*, *TEX9*, *CYP19A1*, *PDE8A*, and *SH3GL3*. Using two independent mRNA expression experiments, one of these nine genes, *TCF21*, was confirmed to be significantly associated with testis weight and testis percentage.

Additional files

Additional file 1: Table S1. Generations of NEAUHLF chickens used for the different analyses in the current study.

Additional file 2: Table S2. Number of SNPs and average density on each chromosome.

Additional file 3: Table S3. Primer sequences used to analyze gene expression.

Additional file 4: Figure S1. Manhattan and Q-Q plots of genome-wide association analyses for TeW and TeP, generated with GAPIT, EMMAX, GenABEL (GRAMMAR) and GEMMA software. The solid line indicates genome-wide significance of association (P value $< 5.48 \times 10^{-7}$). TeW testis weight, TeP testis percentage.

Additional file 5: Figure S2. Scatter plots of the expression level ($2^{-\Delta C_t}$) of the *TCF21* gene in testis tissue versus testis weight (TeW) in the lean and fat lines from G₁₉ using two different housekeeping genes as internal references. TeW = testis weight.

Additional file 6: Table S4. Alignment of chicken *TCF21* protein sequences with those of other species.

Additional file 7: Table S5. Summary of statistics for core haplotypes with $P < 0.05$ on chromosome 3 between 59.3 and 64.7 Mb and on chromosome 10 between 8.7 and 13.3 Mb after the relative extended haplotype homozygosity (REHH) test.

Additional file 8 Known functions of the remaining eight candidate genes. Description: This file describes the basic functions of the other eight genes detected in the GWAS and their possible involvement in spermatogenesis [39–82].

Authors' contributions

HZ interpreted the data, drafted, and wrote the manuscript. WN participated in the experiments. HLZ, NW, and ZQD participated in the drafting of the manuscript. SZW and ZPW participated in the design of the study and contributed to the analysis of the data. ZZ supervised the analyses and revised the manuscript. HL led the conception and design of the study, participated in the interpretation of data, and helped write the manuscript. All authors read and approved the final manuscript.

Author details

¹ Key Laboratory of Chicken Genetics and Breeding, Ministry of Agriculture; Key Laboratory of Animal Genetics, Breeding and Reproduction, Education Department of Heilongjiang Province; College of Animal Science and Technology, Northeast Agricultural University, Harbin 150030, People's Republic of China. ² Department of Crop and Soil Sciences, Washington State University, Pullman, WA 99164, USA.

Acknowledgements

The authors would like to acknowledge the members of the Poultry Breeding Group of the College of Animal Science and Technology at the Northeast Agricultural University, Harbin, China, for managing the birds and collecting the data. This research was supported by the National 863 Project of China (No. 2013AA102501), the China Agriculture Research System (No. CARS-42), the National Natural Science Foundation (No. 31301960), the China Postdoctoral Science Foundation (No. 2015M581421), and the Program for Innovation Research Team in University of Heilongjiang Province (No. 2010td02). The authors thank Linda R. Klein for writing advice and editing the manuscript.

Competing interests

The authors declare that they have no competing interests.

Availability of data and materials

The chicken 60 k SNP data presented in this paper have been deposited into Gene Expression Omnibus (<http://www.ncbi.nlm.nih.gov/geo/>) with the identifier GSE58551. Additional summary data are available in the tables and figures within the article and its additional files.

Received: 18 May 2016 Accepted: 10 February 2017

Published online: 24 February 2017

References

- Burt DW. Applications of biotechnology in the poultry industry. *World Poultry Sci J*. 2002;58:5–13.
- Havenstein GB, Ferket PR, Scheideler SE, Rives DV. Carcass composition and yield of 1991 vs 1957 broilers when fed "typical" 1957 and 1991 broiler diets. *Poult Sci*. 1994;73:1795–804.
- Nones K, Ledur MC, Ruy DC, Baron EE, Melo CM, Moura AS, et al. Mapping QTLs on chicken chromosome 1 for performance and carcass traits in a broiler x layer cross. *Anim Genet*. 2006;37:95–100.
- Heráček J, Sobotka V, Urban M. Obesity and male infertility. *Ceska Gynekol*. 2012;77:450–6.
- International Chicken Genome Sequencing Consortium. Sequence and comparative analysis of the chicken genome provide unique perspectives on vertebrate evolution. *Nature*. 2004;432:695–716.
- Wang HB, Li H, Wang QG, Zhang XY, Wang SZ, Wang YX, et al. Profiling of chicken adipose tissue gene expression by genome array. *BMC Genomics*. 2007;8:193.
- Bilgili SF, Renden JA. Relationship of body fat to fertility in broiler breeder hens. *Poult Sci*. 1985;64:1394–6.
- Nir I, Waites GM, Cunningham FJ. Obesity induced by force-feeding and accompanying changes in body temperature and fertility in the male domestic fowl. *Br Poult Sci*. 1975;16:505–15.
- Powley J. Testes development and fertility. *Aviagen Brief*. 2008;0608-AVN-011.
- Zhang H, Hu X, Wang Z, Zhang Y, Wang S, Wang N, et al. Selection signature analysis implicates the PC1/PCSK1 region for chicken abdominal fat content. *PLoS One*. 2012;7:e40736.
- SAS Institute Inc. *JMP User's Guide*. Cary: SAS Institute Inc; 2002.
- ILLUMINA website. http://www.illumina.com/Documents/products/tech-notes/technote_infinium_genotyping_data_analysis.pdf. Accessed 26 Jun 2012.
- Purcell S, Neale B, Todd-Brown K, Thomas L, Ferreira MA, Bender D, et al. PLINK: a tool set for whole-genome association and population-based linkage analyses. *Am J Hum Genet*. 2007;81:559–75.
- Wang S, Dvorkin D, Da Y. SNPEVG: a graphical tool for GWAS graphing with mouse clicks. *BMC Bioinformatics*. 2012;13:319.
- Ensembl Genome Browser. <http://useast.ensembl.org/index.html>. Accessed 20 May 2013.
- Lipka AE, Tian F, Wang Q, Peiffer J, Li M, Bradbury PJ, et al. GAPIT: genome association and prediction integrated tool. *Bioinformatics*. 2012;28:2397–9.
- Kang HM, Sul JH, Service SK, Zaitlen NA, Kong SY, Freimer NB, et al. Variance component model to account for sample structure in genome-wide association studies. *Nat Genet*. 2010;42:348–54.
- Aulchenko YS, Ripke S, Isaacs A, van Duijn CM. GenABEL: an R library for genome-wide association analysis. *Bioinformatics*. 2007;23:1294–6.
- Zhou X, Stephens M. Genome-wide efficient mixed-model analysis for association studies. *Nat Genet*. 2012;44:821–4.
- Schmittgen TD, Livak KJ. Analyzing real-time PCR data by the comparative C(T) method. *Nat Protoc*. 2008;3:1101–8.
- Groenen MA, Megens HJ, Zare Y, Warren WC, Hillier LW, Crooijmans RP, et al. The development and characterization of a 60 K SNP chip for chicken. *BMC Genomics*. 2011;12:274.
- Sarabia Fragoso J, Pizarro Díaz M, Abad Moreno JC, Casanovas Infesta P, Rodriguez-Bertos A, Barger K. Relationships between fertility and some parameters in male broiler breeders (body and testicular weight, histology and immunohistochemistry of testes, spermatogenesis and hormonal levels). *Reprod Domest Anim*. 2013;48:345–52.
- Vizcarra JA, Kirby JD, Kreider DL. Testis development and gonadotropin secretion in broiler breeder males. *Poult Sci*. 2010;89:328–34.
- Chubb C. Genes regulating testis size. *Biol Reprod*. 1992;47:29–36.
- Lüpold S, Linz GM, Rivers JW, Westneat DF, Birkhead TR. Sperm competition selects beyond relative testes size in birds. *Evolution*. 2009;63:391–402.
- Soulsbury CD. Genetic patterns of paternity and testes size in mammals. *PLoS One*. 2010;5:e9581.
- Braitsch CM, Combs MD, Quaggin SE, Yutzey KE. Pod1/Tcf21 is regulated by retinoic acid signaling and inhibits differentiation of epicardium-derived cells into smooth muscle in the developing heart. *Dev Biol*. 2012;368:345–57.
- Fujimaki T, Oguri M, Horibe H, Kato K, Matsuoka R, Abe S, et al. Association of a transcription factor 21 gene polymorphism with hypertension. *Biomed Rep*. 2015;3:118–22.
- Yang Z, Li DM, Xie Q, Dai DQ. Protein expression and promoter methylation of the candidate biomarker TCF21 in gastric cancer. *J Cancer Res Clin Oncol*. 2015;141:211–20.
- Miller CL, Assimes TL, Montgomery SB, Quertermous T. Dissecting the causal genetic mechanisms of coronary heart disease. *Curr Atheroscler Rep*. 2014;16:406.
- Bhandari RK, Haque MM, Skinner MK. Global genome analysis of the downstream binding targets of testis determining factor SRY and SOX9. *PLoS One*. 2012;7:e43380.
- Bhandari RK, Sadler-Riggelman I, Clement TM, Skinner MK. Basic helix-loop-helix transcription factor TCF21 is a downstream target of the male sex determining gene SRY. *PLoS One*. 2011;6:e19935.
- Cui S, Ross A, Stallings N, Parker KL, Capel B, Quaggin SE. Disrupted gonadogenesis and male-to-female sex reversal in Pod1 knockout mice. *Development*. 2004;131:4095–105.
- Timmons JA, Wennmalm K, Larsson O, Walden TB, Lassmann T, Petrovic N, et al. Myogenic gene expression signature establishes that brown and white adipocytes originate from distinct cell lineages. *Proc Natl Acad Sci USA*. 2007;104:4401–6.
- Guennoun A, Kazantzis M, Thomas R, Wabitsch M, Tews D, Seetharama Sastry K, et al. Comprehensive molecular characterization of human adipocytes reveals a transient brown phenotype. *J Transl Med*. 2015;13:135.
- Waldén TB, Hansen IR, Timmons JA, Cannon B, Nedergaard J. Recruited vs. nonrecruited molecular signatures of brown, "brite," and white adipose tissues. *Am J Physiol Endocrinol Metab*. 2012;302:E19–31.

37. Elsen M, Raschke S, Tennagels N, Schwahn U, Jelenik T, Roden M, et al. BMP4 and BMP7 induce the white-to-brown transition of primary human adipose stem cells. *Am J Physiol Cell Physiol*. 2014;306:C431–40.
38. Zhang H, Wang SZ, Wang ZP, Da Y, Wang N, Hu XX, et al. A genome-wide scan of selective sweeps in two broiler chicken lines divergently selected for abdominal fat content. *BMC Genomics*. 2012;13:704.
39. Komada M, McLean DJ, Griswold MD, Russell LD, Soriano P. *E-MAP-115*, encoding a microtubule-associated protein, is a retinoic acid-inducible gene required for spermatogenesis. *Genes Dev*. 2000;14:1332–42.
40. Fabre-Jonca N, Allaman JM, Radlgruber G, Meda P, Kiss JZ, French LE, et al. The distribution of murine 115-kDa epithelial microtubule-associated protein (E-MAP-115) during embryogenesis and in adult organs suggests a role in epithelial polarization and differentiation. *Differentiation*. 1998;63:169–80.
41. Magnan DR, Spacek DV, Ye N, Lu YC, King TR. The *male sterility and histoincompatibility (msh)* mutation in mice is a natural variant of *microtubule-associated protein 7 (Mtap7)*. *Mol Genet Metab*. 2009;97:155–62.
42. Parra M, Gascard P, Walensky LD, Gimm JA, Blackshaw S, Chan N, et al. Molecular and functional characterization of protein 4.1B, a novel member of the protein 4.1 family with high level, focal expression in brain. *J Biol Chem*. 2000;275:3247–55.
43. Taylor-Harris PM, Felkin LE, Birks EJ, Franklin RC, Yacoub MH, Baines AJ, et al. Expression of human membrane skeleton protein genes for protein 4.1 and betaIIISigma2-spectrin assayed by real-time RT-PCR. *Cell Mol Biol Lett*. 2005;10:135–49.
44. Terada N, Ohno N, Yamakawa H, Baba T, Fujii Y, Zea Z, et al. Immunohistochemical study of protein 4.1B in the normal and W/W(v) mouse seminiferous epithelium. *J Histochem Cytochem*. 2004;52:769–77.
45. Yang S, Weng H, Chen L, Guo X, Parra M, Conboy J, et al. Lack of protein 4.1G causes altered expression and localization of the cell adhesion molecule nectin-like 4 in testis and can cause male infertility. *Mol Cell Biol*. 2011;31:2276–86.
46. Pelletier RM. The distribution of connexin 43 is associated with the germ cell differentiation and with the modulation of the Sertoli cell junctional barrier in continual (guinea pig) and seasonal breeders' (mink) testes. *J Androl*. 1995;16:400–9.
47. Lablack A, Bourdon V, Defamie N, Batias C, Mesnil M, Fenichel P, et al. Ultrastructural and biochemical evidence for gap junction and connexin 43 expression in a clonal Sertoli cell line: a potential model in the study of junctional complex formation. *Cell Tissue Res*. 1998;294:279–87.
48. Steger K, Tetens F, Bergmann M. Expression of connexin 43 in human testis. *Histochem Cell Biol*. 1999;112:215–20.
49. Pointis G, Fiorini C, Defamie N, Segretain D. Gap junctional communication in the male reproductive system. *Biochim Biophys Acta*. 2005;1719:102–16.
50. Batias C, Defamie N, Lablack A, Thepot D, Fenichel P, Segretain D, et al. Modified expression of testicular gap-junction connexin 43 during normal spermatogenic cycle and in altered spermatogenesis. *Cell Tissue Res*. 1999;298:113–21.
51. Palmiero C, Ferrara D, De Rienzo G, d'Istria M, Minucci S. Ethane 1,2-dimethane sulphonate is a useful tool for studying cell-to-cell interactions in the testis of the frog *Rana esculenta*. *Gen Comp Endocrinol*. 2003;131:38–47.
52. Decrouy X, Gasc JM, Pointis G, Segretain D. Functional characterization of Cx43 based gap junctions during spermatogenesis. *J Cell Physiol*. 2004;200:146–54.
53. Izzo G, d'Istria M, Ferrara D, Serino I, Aniello F, Minucci S. Connexin 43 expression in the testis of the frog *Rana esculenta*. *Zygote*. 2006;14:349–57.
54. Roscoe WA, Barr KJ, Mhawi AA, Pomerantz DK, Kidder GM. Failure of spermatogenesis in mice lacking *connexin43*. *Biol Reprod*. 2001;65:829–38.
55. Sridharan S, Simon L, Meling DD, Cyr DG, Gutstein DE, Fishman GI, et al. Proliferation of adult sertoli cells following conditional knockout of the *Gap junctional protein GJA1 (connexin 43)* in mice. *Biol Reprod*. 2007;76:804–12.
56. Sridharan S, Brehm R, Bergmann M, Cooke PS. Role of connexin 43 in Sertoli cells of testis. *Ann N Y Acad Sci*. 2007;1120:131–43.
57. Brehm R, Zeiler M, Rüttinger C, Herde K, Kibschull M, Winterhager E, et al. A sertoli cell-specific knockout of connexin43 prevents initiation of spermatogenesis. *Am J Pathol*. 2007;171:19–31.
58. Defamie N, Berthaut I, Mograbi B, Chevallier D, Dadoune JP, Fénelich P, et al. Impaired gap junction connexin43 in Sertoli cells of patients with secretory azoospermia: a marker of undifferentiated Sertoli cells. *Lab Invest*. 2003;83:449–56.
59. Juneja SC, Barr KJ, Enders GC, Kidder GM. Defects in the germ line and gonads of mice lacking *connexin43*. *Biol Reprod*. 1999;60:1263–70.
60. Plum A, Hallas G, Magin T, Dombrowski F, Hagendorff A, Schumacher B, et al. Unique and shared functions of different connexins in mice. *Curr Biol*. 2000;10:1083–91.
61. Gilleron J, Carette D, Durand P, Pointis G, Segretain D. Connexin 43 a potential regulator of cell proliferation and apoptosis within the seminiferous epithelium. *Int J Biochem Cell Biol*. 2009;41:1381–90.
62. Chao LC, Bensinger SJ, Villanueva CJ, Wroblewski K, Tontonoz P. Inhibition of adipocyte differentiation by Nur77, Nurr1, and Nor1. *Mol Endocrinol*. 2008;22:2596–608.
63. Wellendorph P, Bruner-Osborne H. Molecular cloning, expression, and sequence analysis of *GPRC6A*, a novel family C G-protein-coupled receptor. *Gene*. 2004;335:37–46.
64. Kuang D, Yao Y, Lam J, Tsushima RG, Hampson DR. Cloning and characterization of a family C orphan G-protein coupled receptor. *J Neurochem*. 2005;93:383–91.
65. Pi M, Faber P, Ekema G, Jackson PD, Ting A, Wang N, et al. Identification of a novel extracellular cation-sensing G-protein-coupled receptor. *J Biol Chem*. 2005;280:40201–9.
66. Wellendorph P, Hansen KB, Balsgaard A, Greenwood JR, Egebjerg J, Bruner-Osborne H. Deorphanization of GPRC6A: a promiscuous L-alpha-amino acid receptor with preference for basic amino acids. *Mol Pharmacol*. 2005;67:589–97.
67. Pi M, Parrill AL, Quarles LD. GPRC6A mediates the non-genomic effects of steroids. *J Biol Chem*. 2010;285:39953–64.
68. Varlamov O, White AE, Carroll JM, Bethea CL, Reddy A, Slayden O, et al. Androgen effects on adipose tissue architecture and function in nonhuman primates. *Endocrinology*. 2012;153:3100–10.
69. Rual JF, Venkatesan K, Hao T, Hirozane-Kishikawa T, Dricot A, Li N, et al. Towards a proteome-scale map of the human protein-protein interaction network. *Nature*. 2005;437:1173–8.
70. Carreau S, de Vienne C, Galeraud-Denis I. Aromatase and estrogens in man reproduction: a review and latest advances. *Adv Med Sci*. 2008;53:139–44.
71. Carreau S, Delalande C, Galeraud-Denis I. Mammalian sperm quality and aromatase expression. *Microsc Res Tech*. 2009;72:552–7.
72. de Ronde W, Pols HA, van Leeuwen JP, de Jong FH. The importance of oestrogens in males. *Clin Endocrinol (Oxford)*. 2003;58:529–42.
73. Janulis L, Bahr JM, Hess RA, Janssen S, Osawa Y, Bunick D. Rat testicular germ cells and epididymal sperm contain active P450 aromatase. *J Androl*. 1998;19:65–71.
74. Chow JD, Simpson ER, Boon WC. Alternative 5'-untranslated first exons of the mouse *Cyp19A1 (aromatase)* gene. *J Steroid Biochem Mol Biol*. 2009;115:115–25.
75. Soderling SH, Bayuga SJ, Beavo JA. Cloning and characterization of a cAMP-specific cyclic nucleotide phosphodiesterase. *Proc Natl Acad Sci USA*. 1998;95:8991–6.
76. Mehats C, Andersen CB, Filipanti M, Jin SL, Conti M. Cyclic nucleotide phosphodiesterases and their role in endocrine cell signaling. *Trends Endocrinol Metab*. 2002;13:29–35.
77. Ahlström M, Pekkinen M, Huttunen M, Lamberg-Allardt C. Cyclic nucleotide phosphodiesterases (PDEs) in human osteoblastic cells; the effect of PDE inhibition on cAMP accumulation. *Cell Mol Biol Lett*. 2005;10:305–19.
78. Bender AT, Beavo JA. Cyclic nucleotide phosphodiesterases: molecular regulation to clinical use. *Pharmacol Rev*. 2006;58:488–520.
79. Sasseville M, Albuz FK, Côté N, Guillemette C, Gilchrist RB, Richard FJ. Characterization of novel phosphodiesterases in the bovine ovarian follicle. *Biol Reprod*. 2009;81:415–25.
80. Shimizu-Albergine M, Tsai LC, Patrucco E, Beavo JA. cAMP-specific phosphodiesterases 8A and 8B, essential regulators of Leydig cell steroidogenesis. *Mol Pharmacol*. 2012;81:556–66.
81. Kraynik SM, Miyaoka RS, Beavo JA. PDE3 and PDE4 isozyme-selective inhibitors are both required for synergistic activation of brown adipose tissue. *Mol Pharmacol*. 2013;83:1155–65.
82. Li S, Qiao Y, Di Q, Le X, Zhang L, Zhang X, et al. Interaction of SH3P13 and DYDC1 protein: a germ cell component that regulates acrosome biogenesis during spermiogenesis. *Eur J Cell Biol*. 2009;88:509–20.