



## Sinusoidal modelling for ecoacoustics

Patrice Guyot, Alice Eldridge, Ying Chen Eyre-Walker, Alison Johnston,  
Thomas Pellegrini, Mika Peck

### ► To cite this version:

Patrice Guyot, Alice Eldridge, Ying Chen Eyre-Walker, Alison Johnston, Thomas Pellegrini, et al.. Sinusoidal modelling for ecoacoustics. Annual conference Interspeech (INTERSPEECH 2016), Sep 2016, San Francisco, United States. pp. 2602-2606. hal-01474894

**HAL Id: hal-01474894**

**<https://hal.science/hal-01474894>**

Submitted on 23 Feb 2017

**HAL** is a multi-disciplinary open access archive for the deposit and dissemination of scientific research documents, whether they are published or not. The documents may come from teaching and research institutions in France or abroad, or from public or private research centers.

L'archive ouverte pluridisciplinaire **HAL**, est destinée au dépôt et à la diffusion de documents scientifiques de niveau recherche, publiés ou non, émanant des établissements d'enseignement et de recherche français ou étrangers, des laboratoires publics ou privés.



## Open Archive TOULOUSE Archive Ouverte (OATAO)

OATAO is an open access repository that collects the work of Toulouse researchers and makes it freely available over the web where possible.

This is an author-deposited version published in : <http://oatao.univ-toulouse.fr/>  
Eprints ID : 17162

The contribution was presented at INTERSPEECH 2016 :  
<http://www.interspeech2016.org>

**To cite this version** : Guyot, Patrice and Eldridge, Alice and Chen Eyre-Walker, Ying and Johnston, Alison and Pellegrini, Thomas and Peck, Mika *Sinusoidal modelling for ecoacoustics*. (2016) In: Annual conference Interspeech (INTER\_SPEECH 2016), 9 January 2016 - 12 September 2016 (San Francisco, United States).

Any correspondence concerning this service should be sent to the repository administrator: [staff-oatao@listes-diff.inp-toulouse.fr](mailto:staff-oatao@listes-diff.inp-toulouse.fr)

# Sinusoidal modelling for ecoacoustics

Patrice Guyot<sup>1</sup>, Alice Eldridge<sup>2</sup>,  
Ying Chen Eyre-Walker<sup>1</sup>, Alison Johnston<sup>3</sup>, Thomas Pellegrini<sup>4</sup>, Mika Peck<sup>1</sup>

<sup>1</sup>School of Life Sciences, University of Sussex, Brighton, United Kingdom.

<sup>2</sup>Sussex Humanities Lab/ Music, University of Sussex, Brighton, United Kingdom.

<sup>3</sup>British Trust for Ornithology, Thetford, United Kingdom.

<sup>4</sup>Université de Toulouse, UPS, IRT, Toulouse, France

guyot.patrice@gmail.com, alicee@sussex.ac.uk, mojjiao@gmail.com,  
alison.johnston@bto.org, thomas.pellegrini@irit.fr, M.R.Peck@sussex.ac.uk

## Abstract

Biodiversity assessment is a central and urgent task, necessary to monitoring the changes to ecological systems and understanding the factors which drive these changes. Technological advances are providing new approaches to monitoring, which are particularly useful in remote regions. Situated within the framework of the emerging field of ecoacoustics, there is growing interest in the possibility of extracting ecological information from digital recordings of the acoustic environment. Rather than focusing on identification of individual species, an increasing number of automated indices attempt to summarise acoustic activity at the community level, in order to provide a proxy for biodiversity. Originally designed for speech processing, sinusoidal modelling has previously been used as a bioacoustic tool, for example to detect particular bird species. In this paper, we demonstrate the use of sinusoidal modelling as a proxy for bird abundance. Using data from acoustic surveys made during the breeding season in UK woodland, the number of extracted sinusoidal tracks is shown to correlate with estimates of bird abundance made by expert ornithologists listening to the recordings. We also report ongoing work exploring a new approach to investigate the composition of calls in spectro-temporal space that constitutes a promising new method for Ecoacoustic biodiversity assessment.

**Index Terms:** soundscape ecology, ecoacoustics, bird song, partial, sinusoidal, distribution, biodiversity monitoring

## 1. Introduction

Numerous multilateral initiatives, such as the Convention for Biological Diversity, aim to reduce the rate of loss of global biodiversity; traditional methods of biodiversity monitoring and assessment are impractical over the broad spatial extent and short time frame required to assess the rapid biodiversity change currently occurring. Based on the assumption that vocalising species are valid indicators of biodiversity (e.g. [1]), the emerging discipline of ecoacoustics [2] promotes the possibility of rapid *acoustic* assessment as an effective and efficient diversity monitoring method.

Ecoacoustics is a theoretical and applied discipline that considers sound (the acoustic environment, or *soundscape*, as a material from which to infer ecological information and investigates the ecology of populations and communities as well as the role of sound in animal ecology [3]. Ecoacoustic monitoring methods aim to derive a proxy for the biodiversity of the

community from audio recordings made in situ, which can be an investigative tool for ecological research and a cost-effective monitoring tool for conservation biology. Based on the assumption that the structure of the acoustic environment reflects the structure of the population of vocalising animals, various automatic acoustic indices have been proposed. These tend to provide statistical summaries of digital audio recordings in the time or frequency domain. In this paper we explore the utility of sinusoidal modelling as a tool for ecoacoustic research.

Bird communities are good taxa to study using this method, because, like human speech, birds produce predominantly pitched, harmonic sounds, although some calls contain noise-like components. Sinusoidal modelling is a method developed for speech analysis that extracts a sum of time-frequency components and in previous bioacoustic research it has been successfully applied to the identification of specific bird calls [4]. In this paper we develop the use of sinusoidal modelling to summarise the acoustic activity of entire bird communities. Rather than focusing on detection of particular species, we are concerned with summarising the global distribution of the vocalisations in the time-frequency domain; we describe new indices derived from sinusoidal modelling which may be useful indicators of biodiversity.

This paper is organized as follows: Section 2 contextualises our work by outlining some related research in ecoacoustics and sinusoidal modelling. Analysis methods are given in section 3 and our data collection and annotation in section 3.1. Experimental results are presented and discussed in sections 4 and 5.

## 2. Context

### 2.1. Theoretical and methodological foundations of ecoacoustics

Whereas Bioacoustics focuses on the information transferred between individuals [5], ecoacoustics considers sound to be a core component and indicator of ecological processes and considers larger ecological units. Ecoacoustics has ultimate application in the analysis and monitoring of ecological communities and processes, and it is theoretically grounded in terms of the constraints on the evolution of animal signals. The Acoustic Adaptation Hypothesis (AAH) [6] assumes that the vocalisations of signalling species adapt to the specific acoustic properties of their habitats (ground morphology, vegetation structure, atmospheric content etc.) as signals evolve to minimise attenuation and degradation. The Acoustic Niche Hypothesis

(ANH) [7] adds a sonic component to Hutchinson’s original concept of ecological niche [8] and is derived from the empirical observation that the calls of species in the same location tend to show spectro-temporal partitioning such that there is little overlap of signals. These processes are assumed to operate in tandem and to opposite effect: the AAH describes the impact of environmental degradation of signals; the ANH addresses the acoustic interference from conspecifics. Critically, both of these processes predict ecologically meaningful patterns in the global soundscape, but ecoacoustics currently lacks the tools necessary to investigate these spectro-temporal structures.

Existing ‘community’ indices [1, 9] are derived from representations of the acoustic signal in either the time *or* frequency domain. We suggest that this limits their potential to access and assess the acoustic patterns and processes occurring in time-frequency domain. Some indices analyse the acoustic environment, or *soundscape*, in terms of assumed differences produced by the sources (human-activity versus vocalisations of non-human species) in time [10] or frequency [11]. Others have adapted traditional biodiversity indices to calculate entropy measures in time or frequency domains [12].

## 2.2. Sinusoidal modelling

Acoustic events which contain harmonic signals (such as sounds made by birds) can be modelled by a sum of amplitude and frequency modulated sinusoids. Sinusoidal modelling was first demonstrated as an automatic analysis tool for the analysis of human speech in 1986 [13] and enabled a convincing resynthesis of speech waveforms.

The original algorithm consists of first picking peaks from each frame of a spectrogram, then linking peaks across frames to form partial tracks. More recent research has focused on reducing computational complexity [14] as well as the localization of superposed speech to improve speaker diarisation [15].

Sinusoidal modelling has also been used as a bioacoustic tool for bird species recognition [16, 17, 18, 19, 20]. However, most of these approaches focus on few species [4] or analysing very clean recordings [16, 17, 18]. These approaches also have a heavy computational cost, for instance by considering all the spectral peaks at each frame time [13, 17, 19]. In this paper, we implement a computationally more efficient method and explore its utility as a community level index for ecoacoustic research.

## 3. Method

### 3.1. Data collection and annotation

Our corpus consists of field recordings from an acoustic survey carried out over the bird breeding season in the UK (May - June 2015). In order to assess the methods in a range of environments and with a range of avian communities, a stark habitat gradient was sampled from ancient woodland to farmed land. The *Balmer* site consists of large open fields of monoculture farmed land on the Sussex downs. The *Knepp* site is rewilded farmland which has been regenerating for 15 years and comprises a series of small areas of grassland surrounded by mature hedges. The *Plashett* site is an ancient woodland.

A set of 15 autonomous recording devices were deployed for 3 consecutive days at each site and the vices were composed of SM2 and SM3 from Wildlife Acoustics<sup>1</sup>. The devices were located on a 250 meter grid and scheduled recordings were made for 1 minute every 15 minutes over the dawn chorus (from

one hour before sunrise until 2.5 hours after). We used recordings from only one channel on each device, giving a total of 2025 1-minute mono files.

The full corpus was annotated by an expert ornithologist who identified species present and made minimum abundance estimates for each species within each 1 minute file by listening (repeatedly if necessarily) to each file. 10% of the corpus was validated by a second ornithologist. Results were compared using Cohen’s kappa coefficient of inter-rater agreement (0.623). This gives us baseline values for the number of species ( $N_0$ ) and a proxy for the total number of individuals ( $NN$ ). Estimation of the number of individuals is difficult from recordings as we cannot know if two different vocalizations were produced by the same animal. An abundance proxy was achieved by recording the maximum number of simultaneous vocalisations heard for each species. The abundance proxy,  $NN$ , therefore corresponds to the minimum number of individuals that vocalised during the recording.

### 3.2. Partial tracking

Our method develops the partial tracking methods used for superposed speech detection [14, 15] and comprises the same two step algorithm: peak selection and track formation.

#### 3.2.1. Peak Selection

Peaks are picked from a spectrogram, created by a Fast Fourier Transform<sup>2</sup> over each frame. To be robust to noises from technophony, we focus on the frequency range most widely used by birds, between 1.6 and 8 kHz. In this bandwidth, we select peaks above the amplitude threshold  $amp_{min}$ . As recordings have been made in different sonic environments, the signal-to-noise ratio can vary dramatically across files. We therefore use an adaptive threshold set at the average amplitude of the spectrogram plus 10 dB (set experimentally). Finally, we extract the 5 peaks with highest amplitude from each frame, described by a time, frequency, amplitude triple.

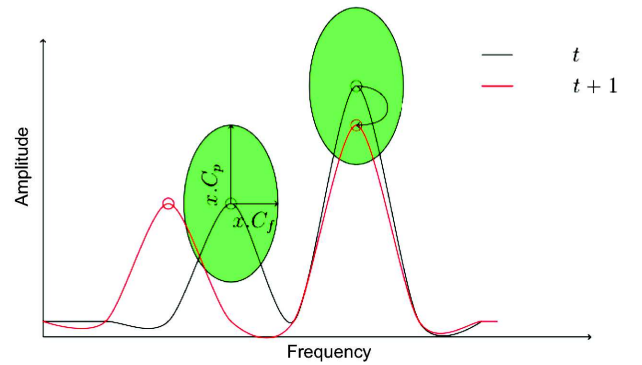


Figure 1: Linked peaks. In this example, only one on two couple of peaks from consecutive time steps is linked to form a track (adapted from [21]).

#### 3.2.2. Track Formation

In the second step, the sinusoidal segments are built by linking the selected peaks. The distance between each peak  $p_i$  of the

<sup>1</sup><http://www.wildlifeacoustics.com/>

<sup>2</sup>Sampling Rate: 48 kHz; Window size: 32 ms; Overlap: 16 ms; FFT size: 2048 bins (including zero-padding)

frame  $t$ , defined by a couple of frequency-amplitude, and each peak  $p_j$  on an adjacent frame  $t + 1$ , is calculated. If the distance  $d_{i,j}$  is less than a threshold, then the two peaks are linked (see [15] for more details about the distance).

Figure 1 illustrates the distance metric applied to two different sets of peaks as over time. Peaks on the right are linked to form part of a track as the frequency-amplitude distance between them falls below the threshold; the distance between peaks on the left exceeds this threshold and no track is created. By linking peaks into tracks we assume they originate from the same source as it evolves over time. To further ensure meaningful tracks, we drop tracks less than a certain threshold,  $duration_{min}$ , set here to 10 frames.

### 3.3. New Indices based on Sinusoidal Modelling

The extracted tracks are assumed to reflect the vocalization of birds. In general bird song has less complex partial structure than human speech (i.e. the number of partial tracks approximates the number of vocalisations). However, close groups of partials can appear in noisy parts such as wind or complex bird songs.

In order to mitigate bias of these clusters and to begin to explore time-frequency distribution of calls which other indices are insensitive to, we calculate measures of global time-frequency distribution of the tracked peaks as well as the total number of tracks  $n_t$ .  $q_o$  and the concentration index (CI) are derived from a spatial analysis method [22] which was developed to describe the geographic distribution of churches, by imposing a grid of quadrats on a given area.

- $q_o$  describes the patchiness of peak distribution across quadrats. The time-frequency zone of each frame is divided into quadrats.  $q_o$  is the proportion of quadrats occupied by at least one peak.
- CI, the Concentration Index [22] describe the evenness of the distribution of peaks across quadrats. This is calculated as the ratio between the average distribution of peaks ( $m$ ) and its variance  $s^2$  as shown in Equation 1. The CI approaches 1 for a random distribution, and increases as peaks are clustered in concentrated areas.

$$CI = s^2 / m \quad (1)$$

- $n_t$ , the number of tracks is computed with the constraint that no more than two simultaneous tracks are counted. This is done in order to avoid tracks coming from noise and complex bird songs, that are not relevant for the individual count. It is therefore a conservative estimate of the number of vocalisations.

### 3.4. Acoustic indices

In order to compare our results with the state-of-the-art indices used in ecoacoustic research, we compute the most commonly used community level diversity indices:

- *Acoustic Entropy Index* (H) [23], the Shannon entropy index calculated on the average frequency bins.
- *Acoustic Evenness Index* (AEI) [24], based on the proportion of bins above a threshold.
- *Acoustic Complexity Index* (ACI) [10], that express the temporal variations of amplitude,

- and *Bioacoustic Index* (BI) [25] which captures the area under the mean spectrum, typically within the assumed range of biophony.

These indices are currently available from the *seewave*<sup>3</sup> and *soundecology*<sup>4</sup> toolboxes. We computed them with our own python code<sup>5</sup> that includes a high pass filter at 300Hz to remove low frequency noise from traffic and other anthropophony.

### 3.5. Experiment

Thresholds for sinusoidal modelling were established experimentally on a small sample of files<sup>6</sup>; all indices were then computed on the whole corpus of 2025 files. In order to remove bias from wind, 344 files manually annotated as windy were dropped from the CI calculations. We used 720 quadrats of  $1s \times 530Hz$ . Our python code is available online with some example files<sup>7</sup>.

## 4. Results

Figure 2 shows the output of our sinusoidal modelling for samples across habitat types and with different species diversity and abundance values. We can observe a low frequency noise that is not captured by the sinusoidal modelling (e.g. planes, road).

### 4.1. Biodiversity indices

The correlation between the acoustic biodiversity indices with annotated values of number of species  $N0$  and abundance  $NN$  was tested with Spearman's rank correlation coefficient (values near 0 suggest no correlation, values near 1 or -1 a positive or negative rank correlation). As shown in table 1, our new indices  $n_t$  and  $q_o$  show a stronger positive correlation with human measures of biodiversity than any of the existing indices, which vary in strength and direction. The CI shows low correlation with both measures of biodiversity.

	H	AEI	ACI	BI	$n_t$	$q_o$	CI
N0	-0.49	0.64	0.54	0.62	<b>0.69</b>	<b>0.67</b>	0.19
NN	-0.54	0.68	0.56	0.66	<b>0.75</b>	<b>0.71</b>	0.24

Table 1: Spearman's Rank Correlation coefficients for automatic indices against annotated values of number of species  $N0$  and total abundance  $NN$ .

### 4.2. Concentration Index

To investigate the CI further we explored the mean values for each site in table 2. The mean number of species ( $N0$ ) and individuals ( $NN$ ) is lowest in the farmed site, Balmer, highest in the regenerating site, Knepp and at intermediate values for Plashett, the ancient woodland. The number of tracks,  $n_t$  follows this order, as also established by the positive correlation coefficients. In contrast the CI is lowest for Balmer and highest in Plashett, suggesting that this summary of the distribution of peaks is accessing other aspects of the acoustic environment.

<sup>3</sup><http://rug.mnhn.fr/seewave/>

<sup>4</sup><http://ljvillanueva.github.io/soundecology/>

<sup>5</sup><http://tinyurl.com/jrs3whf>

<sup>6</sup>In comparison to speech analysis, the main difference is the application of relaxed condition on frequency with a higher threshold  $c_f$  to allow the tracking of bird songs with high frequency variation.

<sup>7</sup><http://tinyurl.com/hnmm6sn>



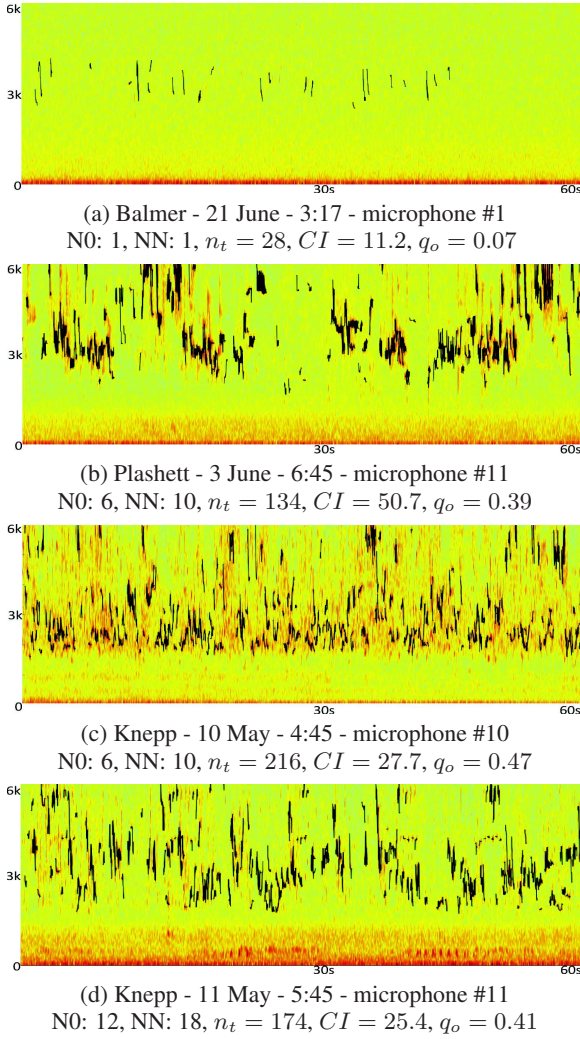


Figure 2: Spectrograms (0 to 6 kHz) for four 1 minute files across three habitat types. Sinusoidal models are superimposed on the spectrograms in black.

## 5. Discussion

These results suggest that sinusoidal modelling holds promise as a tool for ecoacoustic research in a number of ways. Basic statistical information about the number and distribution of partials may serve as an effective proxy for the number of vocalisations, and hence as abundance. Moreover, as a resynthesis method, it enables aural and algorithmic analyses of animal vocalisations separated from background noise. Although this may run counter to the ethos of soundscape ecology, this is a useful utility for the development and testing of automated indices.

### 5.1. Acoustic indices derived from sinusoidal modelling

Basic summaries of the extracted partials ( $n_t$  and  $q_o$ ) were shown to correlate more strongly with abundance counts than existing acoustic indices. It is likely that the tracked partials are representative of individual vocalisations, rather than individual birds and this deserves further research.

The development of new indices for use as proxies in biodiversity assessment requires solid baseline data to validate

against. In this context, a major issue is the difficulty to effectively estimate the number of individuals. For example in figure 2, the number of individuals in the noisy file (c) could be higher than in the file (b). Human annotation is inevitably sensitive to a number of factors that are difficult to control, such as number of listens, audio level, interpersonal differences in attention, and perceptual acuity.

### 5.2. Time frequency distribution

To begin to explore differences in time-frequency distribution, we used a Concentration Index derived from spatial analysis. CI is not associated with the estimated number of species or total abundance, and therefore obtains a poor correlation score with the values  $N0$  and  $NN$  (table 1). The difference of distribution can be observed for example in the figure 2 (b) and (c), where the number of estimated vocalizations are similar. The distribution of tracks, as well as the distribution of the energy, seems sparser in the Plashett file. There could be a number of reasons for this including environmental, species and behavioural differences. For example, the denser woodland of Plashett may attenuate the call of distant birds, that are less filtered in the more open space of Knepp. So the acoustic community in Knepp is effectively sampled from a wider area.

The study of the distribution of calls echoes the Acoustic Niche Hypothesis [7] (ANH), that suggest the time-frequency distribution of calls is optimal to facilitate the inter- or intra-species communication. Our primary results on that topic suggest that the vocalization could be more concentrated in the ancient woodland of Plashett, than in the Knepp regenerative land. The distribution of the vocalization could perhaps reflect the structure of vegetation at the site, which may be more random in a regenerative land, and more structured in the ancient woodland. Further development with ecoacoustic metrics may bring more objective results in order to further assess these theories.

	Balmer	Knepp	Plashett
N0	2.8	6.2	4.9
NN	3.1	7.9	6.1
$n_t$	47.3	148.3	125.5
CI	27	39	42

Table 2: Mean values of  $N0$ ,  $NN$ ,  $n_t$  and CI for three sites.

## 6. Conclusion

In this paper, we presented an application of sinusoidal modelling for ecoacoustics. Our results, based on the number of tracks and the distribution of the peaks, show a 70% ranked correlation with the number of species, a stronger correlation than existing ecoacoustic indices. Further research is needed to establish the ecological relevance of CI, but the development of indices which access two dimensional time-frequency hold promise for the investigation of the distribution of bird calls and ecological hypotheses.

## 7. Acknowledgements

This research was funded by a Leverhulme Trust Research Project Grant. With thanks to Joseph Cooper for carrying out species identification.

## 8. References

- [1] L. Lellouch, S. Pavoine, F. Jiguet, H. Glotin, and J. Sueur, "Monitoring temporal change of bird communities with dissimilarity acoustic indices," *Methods in Ecology and Evolution*, vol. 4, pp. 495–505, 2014.
- [2] J. Sueur and A. Farina, "Ecoacoustics: the ecological investigation and interpretation of environmental sound," *Biosemiotics*, pp. 1–10, 2015. [Online]. Available: <http://dx.doi.org/10.1007/s12304-015-9248-x>
- [3] B. Krause and A. Farina, "Using ecoacoustic methods to survey the impacts of climate change on biodiversity," *Biological Conservation*, vol. 195, pp. 245 – 254, 2016.
- [4] P. Galeotti and G. Pavan, "Individual recognition of male tawny owls (*Strix aluco*) using spectrograms of their territorial calls," *Ethology Ecology & Evolution*, vol. 3, no. 2, pp. 113–126, 1991.
- [5] N. H. Fletcher, *Animal bioacoustics*. T. D. Rossing (Ed.), Handbook of acoustics. New York: Springer, 2007.
- [6] E. S. Morton, "Ecological sources of selection on avian sounds," *The American Naturalist*, vol. 109, no. 965, pp. 17 – 34, 1975.
- [7] B. Krause, "The niche hypothesis, a hidden symphony of animal sounds, the origins of musical expression and the health of habitats," *The Explorers journal*, vol. Winter, pp. 156–160, 1993.
- [8] G. E. Hutchinson, "An introduction to population ecology," 1978.
- [9] M. Towsey, J. Wimmer, I. Williamson, I., and P. Roe., "The use of acoustic indices to determine avian species richness in audio-recordings of the environment," *Ecological Informatics*, 2013.
- [10] N. Pieretti, A. Farina, and D. Morri., "A new methodology to infer the singing activity of an avian community: The acoustic complexity index (aci)," *Ecological Indicators*, vol. 11, no. 3, pp. 868–873, 2011.
- [11] E. Kasten, S. Gage, J. Fox, and W. Joo., "The remote environmental assessment laboratory's acoustic library: An archive for studying soundscape ecology," *Ecological Informatics*, vol. 12, pp. 50–67, 2012.
- [12] J. Sueur, A. Farina, A. Gasc, N. Pieretti, and S. Pavoine., "Acoustic indices for biodiversity assessment and landscape investigation," *Acta Acoustica United with Acoustica*, vol. 100, pp. 772–781, 2014.
- [13] R. J. McAulay and T. F. Quatieri, "Speech analysis/synthesis based on a sinusoidal representation," *Acoustics, Speech and Signal Processing, IEEE Transactions on*, vol. 34, no. 4, pp. 744–754, 1986.
- [14] T. Taniguchi, M. Tohyama, and K. Shirai, "Detection of speech and music based on spectral tracking," *Speech Communication*, vol. 50, no. 7, pp. 547–563, 2008.
- [15] M. Le Coz, J. Pinquier, and R. André-Obrecht, "Superposed speech localisation using frequency tracking," in *INTERSPEECH 2013 – 13<sup>th</sup> Annual Conference of the International Speech Communication Association, August 25-29, Lyon, France, Proceedings*, 2013.
- [16] A. Härmä, "Automatic identification of bird species based on sinusoidal modeling of syllables," in *Acoustics, Speech, and Signal Processing, 2003. Proceedings.(ICASSP'03). 2003 IEEE International Conference on*, vol. 5. IEEE, 2003, pp. V–545.
- [17] Z. Chen and R. C. Maher, "Semi-automatic classification of bird vocalizations using spectral peak tracks," *The Journal of the Acoustical Society of America*, vol. 120, no. 5, pp. 2974–2984, 2006.
- [18] P. Somervuo, A. Härmä, and S. Fagerlund, "Parametric representations of bird sounds for automatic species recognition," *Audio, Speech, and Language Processing, IEEE Transactions on*, vol. 14, no. 6, pp. 2252–2263, 2006.
- [19] J. R. Heller and J. D. Pinezich, "Automatic recognition of harmonic bird sounds using a frequency track extraction algorithm," *The Journal of the Acoustical Society of America*, vol. 124, no. 3, pp. 1830–1837, 2008.
- [20] P. Jancovic, M. Kokuer, and M. Russell, "Bird species recognition from field recordings using hmm-based modelling of frequency tracks," in *Acoustics, Speech and Signal Processing (ICASSP), 2014 IEEE International Conference on*. IEEE, 2014, pp. 8252–8256.
- [21] M. Le Coz, "Spectre de rythme et sources multiples: au cœur des contenus ethnomusicologiques et sonores," Ph.D. dissertation, Toulouse 1, 2014.
- [22] P. J. Taylor, *Quantitative methods in geography: an introduction to spatial analysis*. Houghton Mifflin, 1977.
- [23] J. Sueur, S. Pavoine, O. Hamerlynck, and S. Duvail, "Rapid acoustic survey for biodiversity appraisal," *PLoS One*, vol. 3, no. 12, p. e4065, 2008.
- [24] L. Villanueva-Rivera, B. Pijanowski, J. Doucette, and B. Pekin., "A primer of acoustic analysis for landscape ecologists," *Landscape Ecology*, vol. 26, pp. 1233–1246, 2011.
- [25] N. Boelman, G. Asner, P. Hart, and R. Martin., "Multi-trophic invasion resistance in Hawaii: Bioacoustics, field surveys, and airborne remote sensing," *Ecological Applications*, vol. 17, no. 8, pp. 2137–2144, Dec 2007.