



HAL
open science

Periodic balanced binary triangles

Jonathan Chappelon

► **To cite this version:**

| Jonathan Chappelon. Periodic balanced binary triangles. 2017. hal-01463665v2

HAL Id: hal-01463665

<https://hal.science/hal-01463665v2>

Preprint submitted on 3 Nov 2017 (v2), last revised 23 Nov 2017 (v3)

HAL is a multi-disciplinary open access archive for the deposit and dissemination of scientific research documents, whether they are published or not. The documents may come from teaching and research institutions in France or abroad, or from public or private research centers.

L'archive ouverte pluridisciplinaire **HAL**, est destinée au dépôt et à la diffusion de documents scientifiques de niveau recherche, publiés ou non, émanant des établissements d'enseignement et de recherche français ou étrangers, des laboratoires publics ou privés.

Periodic balanced binary triangles

Jonathan CHAPPELON

Institut Montpellierain Alexander Grothendieck, CNRS, Univ. Montpellier, France

jonathan.chappelon@umontpellier.fr

November 3, 2017

Abstract

A binary triangle of size n is a triangle of zeroes and ones, with n rows, built with the same local rule as the standard Pascal triangle modulo 2. A binary triangle is said to be balanced if the absolute difference between the numbers of zeroes and ones that constitute this triangle is at most 1. In this paper, the existence of balanced binary triangles of size n , for all positive integers n , is shown. This is achieved by considering periodic balanced binary triangles, that are balanced binary triangles where each row, column or diagonal is a periodic sequence.

Keywords: binary triangles, Steinhaus triangles, generalized Pascal triangles, balanced triangles, Steinhaus Problem, periodic triangles, periodic orbits.

MSC2010: 05B30, 11B75, 05A05, 11A99, 05A99.

1 Introduction

The *Steinhaus triangle* ∇S associated with the finite sequence $S = (a_0, a_1, \dots, a_{n-1})$, of length $n \geq 1$ in $\mathbb{Z}/2\mathbb{Z}$, is the triangle generated from S by the same local rule that defines the standard Pascal triangle modulo 2, that is the doubly indexed sequence $\nabla S = (a_{i,j})_{0 \leq i \leq j \leq n-1}$ defined by:

- i) $a_{0,j} = a_j$, for all $0 \leq j \leq n-1$,
- ii) $a_{i,j} = a_{i-1,j-1} + a_{i-1,j}$, for all $1 \leq i \leq j \leq n-1$.

Note that the sum in ii) is the sum modulo 2. The m -th *row*, *column* and *diagonal* of the Steinhaus triangle ∇S are the sequences $(a_{m,j})_{m \leq j \leq n-1}$, $(a_{i,m})_{0 \leq i \leq m}$ and $(a_{i,m+i})_{0 \leq i \leq n-1-m}$, respectively, for all $m \in \{0, 1, \dots, n-1\}$. This kind of binary triangle was introduced in [16] by Hugo Steinhaus himself. For example, the Steinhaus triangle ∇S associated with $S = 0010100$ is depicted in Figure 1.

The *generalized Pascal triangle* $\Delta(S_l, S_r)$ associated with the finite sequences $S_l = (a_0, a_1, \dots, a_{n-1})$ and $S_r = (b_0, b_1, \dots, b_{n-1})$, of length $n \geq 1$ in $\mathbb{Z}/2\mathbb{Z}$ and with $a_0 = b_0$, is the doubly indexed sequence $\Delta(S_l, S_r) = (a_{i,j})_{0 \leq j \leq i \leq n-1}$ defined by:

- i) $a_{i,0} = a_i$ and $a_{i,i} = b_i$, for all $0 \leq i \leq n-1$,
- ii) $a_{i,j} = a_{i-1,j-1} + a_{i-1,j}$, for all $1 \leq j < i \leq n-1$.

The m -th *row*, *column* and *diagonal* of the generalized Pascal triangle $\Delta(S_l, S_r)$ are the sequences $(a_{m,j})_{0 \leq j \leq m}$, $(a_{i,m})_{m \leq i \leq n-1}$ and $(a_{m+j,j})_{0 \leq j \leq n-1-m}$, respectively, for all $m \in \{0, 1, \dots, n-1\}$. For example, the generalized Pascal triangle $\Delta(S_l, S_r)$ associated with $S_l = 0000101$ and $S_r = 0100001$ is depicted in Figure 1. Moreover, note that, for the constant binary sequences $S_l = S_r = 11 \cdots 1$ of size n , the triangle $\Delta(S_l, S_r)$ corresponds to the first n rows of the standard Pascal triangle modulo 2, the Sierpinski triangle.

In this paper, a *binary triangle* is either a Steinhaus triangle or a generalized Pascal triangle. The *size* of a binary triangle is the number of rows that constitute this triangle.

For any binary triangle T , let \mathbf{m}_T denote its multiplicity function, that is, the function $\mathbf{m}_T : \mathbb{Z}/2\mathbb{Z} \rightarrow \mathbb{N}$ that assigns to each element $x \in \mathbb{Z}/2\mathbb{Z}$ its multiplicity in T . The triangle T is said to be *balanced* if its multiplicity function is constant or almost constant, i.e., if the multiplicity difference

$$\delta \mathbf{m}_T := |\mathbf{m}_T(1) - \mathbf{m}_T(0)|$$

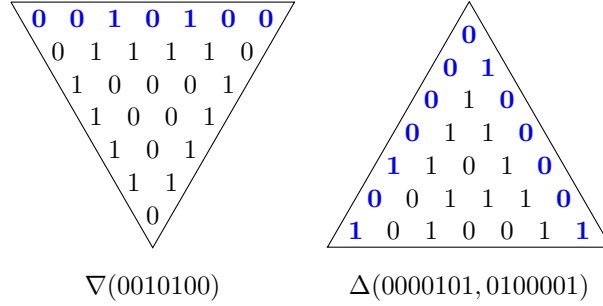


Figure 1: Binary triangles

is such that $\delta \mathbf{m}_T \in \{0, 1\}$. Since they contain 14 zeroes and 14 ones, the triangles depicted in Figure 1 are balanced binary triangles of size 7.

The goal of this paper is to prove that there exist balanced binary triangles of size n , for all positive integers n and for the both kinds of binary triangles. This completely solves a generalization of a problem posed in 1964 by Hugo Steinhaus [16].

Steinhaus Problem. Does there exist, for any positive integer $n \equiv 0$ or $3 \pmod{4}$, a binary sequence S of length n for which the associated triangle ∇S contains as many zeroes as ones?

Since a binary triangle of size n contains $\binom{n+1}{2}$ elements, the condition $n \equiv 0$ or $3 \pmod{4}$ is a necessary and sufficient condition for having a triangle of size n containing an even number of terms.

The Steinhaus Problem was solved for the first time by Heiko Harborth in 1972 [13]. In his paper, Harborth constructively showed that, for every positive integer $n \equiv 0$ or $3 \pmod{4}$, there exist at least four binary sequences S of length n such that ∇S is balanced. Since then, many solutions have appeared [10, 11, 12]. All of them are constructive and correspond to the search of sequences generating balanced triangles, that have some additional properties such as being antisymmetric or zero-sum.

The possible number of ones in binary triangles was explored in [3, 14]. The minimum number of ones is obviously 0 since the triangle of zeroes of size n is always a binary triangle. The maximum number of ones in a Steinhaus triangle of size n is $\lceil \frac{2}{3} \binom{n+1}{2} \rceil$. As shown in [3, 13], this maximum number of ones is obtained, for instance, for the Steinhaus triangle associated with the initial segment of length n of the 3-periodic sequence $110110110 \dots$ for all positive integer n . In [14], it was proved that the maximum number of ones in a generalized Pascal triangle of size n is $\lceil \frac{2}{3} \binom{n+1}{2} \rceil + \varepsilon$, where

$$\varepsilon = \begin{cases} 2 & \text{if } n \equiv 1 \pmod{3}, n \neq 1, \\ 1 & \text{if } n \equiv 0, 2 \pmod{3}, n \neq 8, \\ 0 & \text{if } n = 1, \\ 3 & \text{if } n = 8. \end{cases}$$

The following result gives the average number of ones and zeroes in binary triangles.

Proposition 1.1. *The average number of ones and zeroes in a binary triangle of size n is exactly $\frac{1}{2} \binom{n+1}{2}$.*

Proof. We induct on n .

First, for the Steinhaus triangles, the result is trivial for $n = 1$. Suppose now that $n \geq 2$ and that the result is true for any Steinhaus triangle of size $n - 1$. Let ∇S be the Steinhaus triangle of size $n - 1$ generated from the sequence $S = (a_0, a_1, \dots, a_{n-2})$. There exist exactly two sequences S' of length n such that we retrieve ∇S as the subtriangle $\nabla S' \setminus S'$, that is, the last $n - 1$ rows of the Steinhaus triangle $\nabla S'$ of size n . These sequences S' are of the form

$$S' = \left(x, x + a_0, x + a_0 + a_1, \dots, x + \sum_{j=0}^{i-1} a_j, \dots, x + \sum_{j=0}^{n-2} a_j \right),$$

with $x \in \mathbb{Z}/2\mathbb{Z}$. Moreover, for all positive integers m , it is clear that there are 2^m binary sequences of length m and the same number of Steinhaus triangles of size m . It follows that, for all $x \in \mathbb{Z}/2\mathbb{Z}$, the total number of x in the set of all the Steinhaus triangles of size n is the sum of twice the total number

of x in the set of Steinhaus triangles of size $n - 1$ and the total number of x in the set of sequences of length n . This leads to the result that the average number of x in a Steinhaus triangle of size n is

$$\frac{1}{2^n} \left(2 \times 2^{n-1} \times \frac{1}{2} \binom{n}{2} + 2^{n-1} n \right) = \frac{1}{2} \binom{n+1}{2},$$

for all $x \in \mathbb{Z}/2\mathbb{Z}$.

Now, for the generalized Pascal triangles. For $n = 1$ and $n = 2$, the result is clear. Suppose now that $n \geq 3$ and that the result is true for any generalized Pascal triangle of size $n - 2$. Let $\Delta(S_l, S_r)$ be the generalized Pascal triangle of size $n - 2$ generated from the sequences $S_l = (a_0, a_1, \dots, a_{n-3})$ and $S_r = (b_0, b_1, \dots, b_{n-3})$, with $a_0 = b_0$. There exist exactly 2^4 couples (S'_l, S'_r) of sequences of length n such that we retrieve $\Delta(S_l, S_r)$ as the subtriangle $\Delta(S'_l, S'_r) \setminus (S'_l \cup S'_r \setminus \{a_0\})$, that is, the generalized Pascal triangle obtained from $\Delta(S'_l, S'_r)$ by removing the left and right sides of the triangle. These couples of sequences (S'_l, S'_r) are of the form

$$\begin{aligned} S'_l &= (x_1, x_2, a_0 + a_1, a_1 + a_2, \dots, a_{n-4} + a_{n-3}, x_3), \\ S'_r &= (x_1, x_2 + a_0, b_0 + b_1, b_1 + b_2, \dots, b_{n-4} + b_{n-3}, x_4), \end{aligned}$$

where $x_1, x_2, x_3, x_4 \in \mathbb{Z}/2\mathbb{Z}$. Moreover, for all positive integers m , it is clear that there are 2^{2m-1} binary sequences of length $2m - 1$ and the same number of generalized Pascal triangles of size m . It follows that, for all $x \in \mathbb{Z}/2\mathbb{Z}$, the total number of x in the set of all the generalized Pascal triangles of size n is the sum of 2^4 times the total number of x in the set of generalized Pascal triangles of size $n - 2$ and the total number of x in the set of sequences of length $2n - 1$. This leads to the result that the average number of x in a generalized Pascal triangle of size n is

$$\frac{1}{2^{2n-1}} \left(2^4 \times 2^{2(n-2)-1} \times \frac{1}{2} \binom{n-1}{2} + 2^{2n-2} (2n-1) \right) = \frac{1}{2} \binom{n+1}{2},$$

for all $x \in \mathbb{Z}/2\mathbb{Z}$. This completes the proof. \square

This result shows that the Steinhaus Problem and the following generalization are *natural*.

Problem 1. Does there exist, for any positive integer n , a balanced Steinhaus triangle and a balanced generalized Pascal triangle of size n ?

As already announced, this problem is solved in the positive in this paper. The solution presented here is constructive and based on the analysis of periodic balanced binary triangles, that are balanced binary triangles where each row or column is a periodic sequence.

Let us begin with some definitions and terminology. Let $S = (a_j)_{j \in \mathbb{Z}}$ be a doubly infinite sequence of $\mathbb{Z}/2\mathbb{Z}$. The *derived sequence* ∂S is the sequence obtained by pairwise adding consecutive terms of S , that is,

$$\partial S = (a_{j-1} + a_j)_{j \in \mathbb{Z}}.$$

This derivation process can be iterated and, for every positive integer i , the i -th derived sequence $\partial^i S$ is recursively defined by $\partial^i = \partial(\partial^{i-1} S)$ with $\partial^0 S = S$. The *orbit* \mathcal{O}_S is the sequence of all the iterated derived sequences of S , that is,

$$\mathcal{O}_S = (\partial^i S)_{i \in \mathbb{N}}.$$

The orbit of S can also be seen as the doubly indexed sequence $\mathcal{O}_S = (a_{i,j})_{(i,j) \in \mathbb{N} \times \mathbb{Z}}$ defined by

- i) $a_{0,j} = a_j$, for all $j \in \mathbb{Z}$, and
- ii) $a_{i,j} = a_{i-1,j-1} + a_{i-1,j}$, for all $i \geq 1$ and for all $j \in \mathbb{Z}$.

An example of orbit \mathcal{O}_S associated with the sequence

$$S = (\dots, 0, 0, 1, 0, 1, 0, 1, 1, 0, 0, 0, 0, 1, 1, 0, 0, 0, 0, 1, 0, 0, 1, 1, 1, 0, \dots)$$

is depicted in Figure 2.

Binary triangles can then be considered as appearing in orbits of binary sequences. Let $\nabla S(i_0, j_0, n)$ denote the triangle build from the base to the top, whose *principal vertex* is at the position $(i_0, j_0) \in \mathbb{N} \times \mathbb{Z}$ in the orbit $\mathcal{O}_S = (a_{i,j})_{(i,j) \in \mathbb{N} \times \mathbb{Z}}$ and of *size* n , i.e., the Steinhaus triangle

$$\nabla S(i_0, j_0, n) = \nabla(a_{i_0, j_0}, a_{i_0, j_0+1}, \dots, a_{i_0, j_0+n-1}) = (a_{i_0+i, j_0+j})_{0 \leq i \leq j \leq n-1}.$$

0	0	1	0	1	0	1	1	0	0	0	0	1	1	0	0	0	0	1	0	0	1	1	0	
1	0	1	1	1	1	1	0	1	0	0	0	1	0	1	0	0	0	1	1	0	1	0	0	1
1	1	1	0	0	0	0	1	1	1	0	0	1	1	1	1	0	0	1	0	1	1	1	0	1
1	0	0	1	0	0	0	1	0	0	1	0	1	0	0	0	1	0	1	1	1	0	0	1	1
0	1	0	1	1	0	0	1	1	0	1	1	1	1	0	0	1	1	1	0	0	1	0	1	0
1	1	1	1	0	1	0	1	0	1	1	0	0	0	1	0	0	1	0	0	1	0	1	1	1
0	0	0	0	1	1	1	1	1	1	0	1	0	0	1	1	1	1	1	0	1	1	1	0	0
0	0	0	0	1	0	0	0	0	0	1	1	1	0	1	0	0	0	1	1	0	0	1	0	0
0	0	0	0	1	1	0	0	0	0	1	0	0	1	1	1	0	0	1	0	1	0	1	1	0
1	0	0	0	1	0	1	0	0	0	1	1	0	1	0	0	1	0	1	1	1	0	1	1	0
1	1	0	0	1	1	1	1	0	0	1	0	1	1	1	0	1	1	1	0	0	0	0	1	1
0	0	1	0	1	0	0	0	1	0	1	1	1	0	0	1	1	0	0	1	0	0	0	1	0
1	0	1	1	1	1	0	0	1	1	1	0	0	1	0	1	0	1	1	0	0	1	1	1	0
0	1	1	0	0	0	1	0	1	0	0	1	0	1	1	1	1	1	1	1	0	1	0	1	0

Figure 2: Binary triangles appearing in an orbit \mathcal{O}_S

Let $\Delta S(i_0, j_0, n)$ denote the triangle build from the top to the base, whose *principal vertex* is at the position $(i_0, j_0) \in \mathbb{N} \times \mathbb{Z}$ in the orbit \mathcal{O}_S and of *size* n , i.e., the generalized Pascal triangle

$$\begin{aligned} \Delta S(i_0, j_0, n) &= \Delta((a_{i_0, j_0}, a_{i_0+1, j_0}, \dots, a_{i_0+n-1, j_0}), (a_{i_0, j_0}, a_{i_0+1, j_0+1}, \dots, a_{i_0+n-1, j_0+n-1})) \\ &= (a_{i_0+i, j_0+j})_{0 \leq j \leq i \leq n-1}. \end{aligned}$$

Example of triangles appearing in an orbit \mathcal{O}_S is represented in Figure 2.

The sets of all the Steinhaus triangles of size n and of all the generalized Pascal triangles of size n are denoted by \mathcal{ST}_n and \mathcal{PT}_n , respectively. It is clear that these sets are $\mathbb{Z}/2\mathbb{Z}$ -vector spaces of dimension n and $2n-1$, respectively. Moreover, as depicted in Figure 3, there exists an obvious isomorphism between \mathcal{PT}_n and \mathcal{ST}_{2n-1} since a generalized Pascal triangle of size n can be seen as the center of a Steinhaus triangle of size $2n-1$.

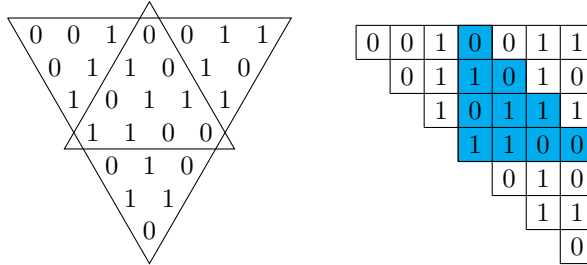


Figure 3: Isomorphism between \mathcal{PT}_n and \mathcal{ST}_{2n-1}

A binary triangle of size n is constituted by $\binom{n+1}{2}$ elements, the n -th triangular number. Therefore, a binary triangle of size n contains an even number of terms for $n \equiv 0, 3 \pmod{4}$ and an odd number of terms for $n \equiv 1, 2 \pmod{4}$. It follows that a binary triangle T of size n is balanced if and only if

$$\delta \mathbf{m}_T = \begin{cases} 0 & \text{for } n \equiv 0, 3 \pmod{4}, \\ 1 & \text{for } n \equiv 1, 2 \pmod{4}. \end{cases}$$

In other words, a binary triangle T of size n is balanced if and only if either $\mathbf{m}_T(0) = \mathbf{m}_T(1)$, for $n \equiv 0, 3 \pmod{4}$, or $\mathbf{m}_T(0) = \mathbf{m}_T(1) \pm 1$, for $n \equiv 1, 2 \pmod{4}$. Then, the Steinhaus Problem is solved if we can determine whether there exist balanced Steinhaus triangles containing an even number of terms, for all the admissible sizes.

The main result of this paper is the following

Theorem 1.2. *There exists a binary doubly infinite sequence S such that its orbit \mathcal{O}_S contains balanced Steinhaus triangles and balanced generalized Pascal triangles of size n , for all positive integers n .*

This theorem completely and positively solves Problem 1, the generalization of the Steinhaus Problem for the two kinds of triangles, even when the triangles contain an odd number of terms. Note that the existence of balanced Steinhaus triangles with odd cardinality was first announced, without proof, in [10]. For the generalized Pascal triangles, the result is known but has not been published.

This paper is organized as follows. In the next section, the behavior of the p -periodic sequences under the action of the derivation process is studied and the set of p -tuples that generate p -periodic orbits is determined, for all values of p . An equivalence relation on the set of p -periodic orbits is given in Section 3. This permits us to only consider the equivalence classes of p -periodic orbits and considerably reduce the number of orbits to analyse in the sequel. Let (i_0, j_0) be a fixed position in the orbit \mathcal{O}_S and $r \in \{0, 1, \dots, p-1\}$ be a fixed residue class modulo p . In Section 4, necessary and sufficient conditions on the family of Steinhaus triangles $\nabla S(i_0, j_0, pk+r)$, for being balanced for all non-negative integers k , are obtained. This leads to the proof of Theorem 1.2 in Section 5. Finally, we show in Section 6 that already known results on balanced triangles modulo m can also be expressed by periodic balanced triangles.

2 Periodic orbits

For any n_1 -tuple $X_1 = (a_0, a_1, \dots, a_{n_1-1})$ and any n_2 -tuple $X_2 = (b_0, b_1, \dots, b_{n_2-1})$ of elements in $\mathbb{Z}/2\mathbb{Z}$, the concatenation $X_1.X_2$ is the (n_1+n_2) -tuple $(a_0, a_1, \dots, a_{n_1-1}, b_0, b_1, \dots, b_{n_2-1})$. For any n -tuple X , the kn -tuple X^k is recursively defined by $X^k = X.X^{k-1}$ for all integers $k \geq 2$, with $X^1 = X$. For any n -tuple $X = (a_0, a_1, \dots, a_{n-1})$, the doubly infinite sequence $X^\infty = (b_j)_{j \in \mathbb{Z}}$ is defined by $b_{kn+j} = a_j$ for all $k \in \mathbb{Z}$ and for all $j \in \{0, 1, \dots, n-1\}$. For any doubly infinite sequence $S = (a_j)_{j \in \mathbb{Z}}$ and any positive integer n , we denote by $S[n]$ the initial segment of length n of S , that is, the n -tuple $S[n] = (a_0, a_1, \dots, a_{n-1})$.

Let p be a positive integer and let $S = (a_j)_{j \in \mathbb{Z}}$ be a doubly infinite sequence of elements of $\mathbb{Z}/2\mathbb{Z}$. The sequence S is said to be *periodic of period p* , or *p -periodic*, if $a_{j+p} = a_j$ for all $j \in \mathbb{Z}$. The p -periodicity of S is denoted by $S = (a_0, a_1, \dots, a_{p-1})^\infty$, where the p -tuple $(a_0, a_1, \dots, a_{p-1})$ is a *period* of length p of S .

First, it is clear that the periodicity of S is preserved under the derivation process.

Proposition 2.1. *For any p -tuple $(a_0, a_1, \dots, a_{p-1})$, we have*

$$\partial(a_0, a_1, \dots, a_{p-1})^\infty = (a_{p-1} + a_0, a_0 + a_1, \dots, a_{p-2} + a_{p-1})^\infty$$

An infinite sequence $(A_i)_{i \in \mathbb{N}}$ is said to be *pseudo-periodic of period p* if there exists $i_0 \in \mathbb{N}$ such that $A_{i+p} = A_i$ for all $i \geq i_0$.

Proposition 2.2. *The orbit of a periodic sequence is a pseudo-periodic sequence.*

Proof. Let S be a p -periodic sequence of $\mathbb{Z}/2\mathbb{Z}$ and let $\mathcal{O}_S = (\partial^i S)_{i \in \mathbb{N}}$ be its associated orbit. By Proposition 2.1, we know that, for every non-negative integer i , the derived sequence $\partial^i S$ is a p -periodic sequence. Since the number of p -tuples over $\mathbb{Z}/2\mathbb{Z}$ and thus the number of p -periodic sequences of $\mathbb{Z}/2\mathbb{Z}$ is finite, we deduce that there exist $0 \leq i_1 < i_2$ such that $\partial^{i_1} S = \partial^{i_2} S$. This leads to

$$\partial^{i+(i_2-i_1)} S = \partial^{i-i_1} \partial^{i_2} S = \partial^{i-i_1} \partial^{i_1} S = \partial^i S$$

for all $i \geq i_1$. The sequence \mathcal{O}_S is then a pseudo-periodic sequence of period $i_2 - i_1$. \square

We can retrieve the case where the orbit is pseudo-periodic and not periodic in the papers of Harborth [13] and of Eliahou and Hachez [10]. Here, we will study the special case where the orbit is fully periodic.

The orbit $\mathcal{O}_S = (a_{i,j})_{(i,j) \in \mathbb{N} \times \mathbb{Z}}$ is said to be *periodic of period p* , or *p -periodic*, if every row and every column is a p -periodic sequence, i.e., if the equalities

$$a_{i,j+p} = a_{i,j} \quad \text{and} \quad a_{i+p,j} = a_{i,j}$$

hold for all $i \in \mathbb{N}$ and all $j \in \mathbb{Z}$. In other words, the orbit $(a_{i,j})_{(i,j) \in \mathbb{N} \times \mathbb{Z}}$ is p -periodic if the equality

$$a_{i,j} = a_{\bar{i}, \bar{j}}$$

holds, for all $(i, j) \in \mathbb{N} \times \mathbb{Z}$, where \bar{x} is the remainder in the euclidean division of x by p . For example, as depicted in Figure 4, the orbit \mathcal{O}_X associated with the 6-tuple $X = 010100$ is 6-periodic. Note that a binary triangle appearing in a periodic orbit is simply a periodic binary triangle, as defined above.

Any square $P_{i_0, j_0} = (a_{i_0+i, j_0+j})_{0 \leq i, j \leq p-1}$ of size p is said to be a *period* of the p -periodic orbit \mathcal{O}_S . Remark that all the periods of a p -periodic orbit have the same multiplicity function, i.e., we have $\mathbf{m}_{P_{i_0, j_0}} = \mathbf{m}_{P_{0,0}}$ for all $(i_0, j_0) \in \mathbb{N} \times \mathbb{Z}$.

The set of p -tuples of $\mathbb{Z}/2\mathbb{Z}$ that generate p -periodic orbits is given in the following theorem, that also appears in [13].

0	1	0	1	0	0	0	1	0	1	0	0	0	1	0	1	0	0
0	1	1	1	1	0	0	1	1	1	1	0	0	1	1	1	1	0
0	1	0	0	0	1	0	1	0	0	0	1	0	1	0	0	0	1
1	1	1	0	0	1	1	1	1	0	0	1	1	1	1	0	0	1
0	0	0	1	0	1	0	0	0	1	0	1	0	0	0	1	0	1
1	0	0	1	1	1	1	0	0	1	1	1	1	0	0	1	1	1
0	1	0	1	0	0	0	1	0	1	0	0	0	1	0	1	0	0
0	1	1	1	1	0	0	1	1	1	1	0	0	1	1	1	1	0
0	1	0	0	0	1	0	1	0	0	0	1	0	1	0	0	0	1
1	1	1	0	0	1	1	1	1	0	0	1	1	1	1	0	0	1
0	0	0	1	0	1	0	0	0	1	0	1	0	0	0	1	0	1
1	0	0	1	1	1	1	0	0	1	1	1	1	0	0	1	1	1

Figure 4: The 6-periodic orbit $\mathcal{O}_{010100\infty}$

Theorem 2.3. *The orbit \mathcal{O}_{X^∞} associated with the p -tuple $X = (a_0, a_1, \dots, a_{p-1})$ is p -periodic if and only if the vector $v_X = (a_0, a_1, \dots, a_{p-1})^t$ is in the kernel of the matrix W_p which is the Wendt matrix of size p modulo 2, i.e., the circulant matrix of the binomial coefficients modulo 2*

$$W_p = \begin{pmatrix} \binom{p}{p} & \binom{p}{p-1} & \binom{p}{p-2} & \cdots & \binom{p}{1} \\ \binom{p}{1} & \binom{p}{p} & \binom{p}{p-1} & \cdots & \binom{p}{2} \\ \vdots & \vdots & \vdots & \ddots & \vdots \\ \binom{p}{p-1} & \binom{p}{p-2} & \binom{p}{p-3} & \cdots & \binom{p}{p} \end{pmatrix}.$$

To prove this result, we use the following lemma where it is shown that each term of the orbit \mathcal{O}_S can be expressed as a function of the elements of the sequence S . The proof of this lemma is a straightforward induction.

Lemma 2.4. *Let $\mathcal{O}_S = (a_{i,j})_{(i,j) \in \mathbb{N} \times \mathbb{Z}}$ be an orbit and let i_0 be a non-negative integer. Then,*

$$a_{i_0+i,j} = \sum_{k=0}^i \binom{i}{k} a_{i_0,j-k}$$

for all $(i,j) \in \mathbb{N} \times \mathbb{Z}$.

Proof of Theorem 2.3. Let $X = (a_0, a_1, \dots, a_{p-1})$ be a p -tuple and let $\mathcal{O}_{X^\infty} = (a_{i,j})_{(i,j) \in \mathbb{N} \times \mathbb{Z}}$ be its associated orbit. Since, by definition, the sequence X^∞ is p -periodic, we already know from Proposition 2.1 that the derived sequences $\partial^i X^\infty$ are p -periodic for all non-negative integers i . Therefore the equality $a_{i,j+p} = a_{i,j}$ is true for all $(i,j) \in \mathbb{N} \times \mathbb{Z}$. Thus, the orbit \mathcal{O}_{X^∞} is p -periodic if and only if $a_{i+p,j} = a_{i,j}$ for all $(i,j) \in \mathbb{N} \times \mathbb{Z}$. The equality $a_{i+p,j} = a_{i,j}$ holds for all $(i,j) \in \mathbb{N} \times \mathbb{Z}$ if and only if $a_{p,j} = a_{0,j}$ for all $j \in \mathbb{Z}$. Moreover, since the sequences $(a_{0,j})_{j \in \mathbb{Z}}$ and $(a_{p,j})_{j \in \mathbb{Z}}$ are p -periodic, the orbit \mathcal{O}_{X^∞} is p -periodic if and only if $a_{p,j} = a_{0,j}$ for all $j \in \{0, 1, \dots, p-1\}$. From Lemma 2.4, we know that $a_{p,j} = \sum_{k=0}^p \binom{p}{k} a_{0,j-k}$ for all $j \in \{0, 1, \dots, p-1\}$. Therefore the orbit \mathcal{O}_{X^∞} is p -periodic if and only if

$$\begin{cases} \binom{p}{1}a_{0,-1} + \binom{p}{2}a_{0,-2} + \cdots + \binom{p}{p}a_{0,-p} & = 0 \\ \binom{p}{1}a_{0,0} + \binom{p}{2}a_{0,-1} + \cdots + \binom{p}{p}a_{0,-p+1} & = 0 \\ \vdots & \\ \binom{p}{1}a_{0,p-2} + \binom{p}{2}a_{0,p-3} + \cdots + \binom{p}{p}a_{0,-1} & = 0 \end{cases} \iff \begin{cases} \binom{p}{1}a_{p-1} + \binom{p}{2}a_{p-2} + \cdots + \binom{p}{p}a_0 & = 0 \\ \binom{p}{1}a_0 + \binom{p}{2}a_{p-1} + \cdots + \binom{p}{p}a_1 & = 0 \\ \vdots & \\ \binom{p}{1}a_{p-2} + \binom{p}{2}a_{p-3} + \cdots + \binom{p}{p}a_{p-1} & = 0 \end{cases}$$

i.e., if and only if the p -tuple X is in the kernel of the Wendt matrix $W_p = \left(\binom{p}{|i-j|} \right)_{1 \leq i,j \leq p}$ modulo 2. \square

The set of p -tuples X that generate p -periodic orbits \mathcal{O}_{X^∞} is denoted by \mathcal{PO}_p . It is then a $\mathbb{Z}/2\mathbb{Z}$ -vector space isomorphic to the kernel of the Wendt matrix W_p of size p modulo 2. Table 1 gives $\dim \ker(W_p)$ and $|\mathcal{PO}_p| = 2^{\dim \ker(W_p)}$ for the first few values of p .

p	1	2	3	4	5	6	7	8	9	10	11	12
$\dim \ker(W_p)$	0	0	2	0	0	4	6	0	2	0	0	8
p	13	14	15	16	17	18	19	20	21	22	23	24
$\dim \ker(W_p)$	0	12	14	0	0	4	0	0	8	0	0	16

Table 1: The first few values of $\dim \ker(W_p)$

For example, for $p = 6$, we have $\dim \ker(W_6) = 4$ and $|\mathcal{PO}_6| = 2^4 = 16$. There are then 16 different 6-tuples that generate a 6-periodic orbit. More precisely, the set \mathcal{PO}_6 is given by

$$\begin{aligned} \mathcal{PO}_6 &= \langle 000101, 001010, 010001, 100010 \rangle \\ &= \{000000, 000101, 001010, 001111, 010001, 010100, 011011, 011110, \\ &\quad 100010, 100111, 101000, 101101, 110011, 110110, 111001, 111100\}. \end{aligned}$$

We recall here that the 6-tuple $X = 010100$ generates a 6-periodic orbit as depicted in Figure 4.

3 Symmetry group of \mathcal{PO}_p

In this section, a symmetry group on the set of p -tuples that generate p -periodic orbits is defined. First, the notion of translation and the action of the dihedral group D_3 on periodic orbits are introduced.

3.1 Translation

Let $\mathcal{O}_{X^\infty} = (a_{\bar{i}, \bar{j}})_{(i,j) \in \mathbb{N} \times \mathbb{Z}}$ be the p -periodic orbit associated with $X = (a_0, a_1, \dots, a_{p-1}) \in \mathcal{PO}_p$. The *translate of X by the vector $(u, v) \in \mathbb{Z}^2$* is the p -tuple $\mathbf{t}_{u,v}(X) = (a_{\overline{-u}, \overline{j-v}})_{0 \leq j \leq p-1}$. From Lemma 2.4, we know that

$$\mathbf{t}_{u,v}(X) = \left(\sum_{k=0}^{\overline{-u}} \binom{\overline{-u}}{k} a_{\overline{j-v-k}} \right)_{0 \leq j \leq p-1}.$$

From the definition of $\mathbf{t}_{u,v}(X)$, it is clear that

$$\mathcal{O}_{\mathbf{t}_{u,v}(X)^\infty} = \left(a_{\overline{-u}, \overline{j-v}} \right)_{(i,j) \in \mathbb{N} \times \mathbb{Z}}.$$

Therefore $\mathbf{t}_{u,v}$ is an automorphism of \mathcal{PO}_p . Moreover, the application

$$\begin{aligned} (\mathbb{Z}^2, +) &\longrightarrow (\text{Aut}(\mathcal{PO}_p), \circ) \\ (u, v) &\longmapsto \mathbf{t}_{u,v} \end{aligned}$$

is a group morphism.

For example, the translate of the 6-tuple $010100 \in \mathcal{PO}_6$ (Figure 4) by the vector $(2, 3)$ is $\mathbf{t}_{2,3}(010100) = 101000$, as we can see in its orbit $\mathcal{O}_{\mathbf{t}_{2,3}(010100)^\infty} = \mathcal{O}_{101000}^\infty$ depicted in Figure 5.

3.2 The dihedral group D_3

First, consider the Steinhaus triangles $\nabla S = (a_{i,j})_{0 \leq i \leq j \leq n-1}$ of size n . The *left and right sides* of ∇S are the sequences $l(S) = (a_{n-1-i, n-1-i})_{0 \leq i \leq n-1}$ and $r(S) = (a_{i, n-1})_{0 \leq i \leq n-1}$, respectively. From Lemma 2.4, we know that $l(S)$ and $r(S)$ can be expressed as functions of the elements of $S = (a_j)_{0 \leq j \leq n-1}$

$$l(S) = \left(\sum_{k=0}^{n-1-i} \binom{n-1-i}{k} a_{n-1-i-k} \right)_{0 \leq i \leq n-1} \quad \text{and} \quad r(S) = \left(\sum_{k=0}^i \binom{i}{k} a_{n-1-k} \right)_{0 \leq i \leq n-1}.$$

The reversed sequence of S is the sequence read from the right to the left, that is $i(S) = (a_{n-1-j})_{0 \leq j \leq n-1}$.

Due to the symmetries involved in the local rule that generates ∇S , the Pascal local rule modulo 2, it is known that the Steinhaus triangles $\nabla l(S)$, $\nabla r(S)$ and $\nabla i(S)$ correspond to the rotations of ∓ 120 degrees around the center of the triangle ∇S and the reflection across the vertical line through the center of ∇S , respectively. More precisely, for all integers i and j such that $1 \leq i \leq j \leq n-1$, we have

$$a_{i-1, j-1} + a_{i-1, j} = a_{i, j} \iff a_{i-1, j} + a_{i, j} = a_{i-1, j-1} \iff a_{i-1, j-1} + a_{i, j} = a_{i-1, j}. \quad (1)$$

1	0	1	0	0	0	1	0	1	0	0	0	1	0	1	0	0	0
1	1	1	1	0	0	1	1	1	1	0	0	1	1	1	1	0	0
1	0	0	0	1	0	1	0	0	0	1	0	1	0	0	0	1	0
1	1	0	0	1	1	1	1	0	0	1	1	1	1	1	0	0	1
0	0	1	0	1	0	0	0	0	1	0	1	0	0	0	1	0	1
0	0	1	1	1	1	0	0	0	1	1	1	1	0	0	1	1	1
1	0	1	0	0	0	1	0	1	0	0	0	1	0	1	0	0	0
1	1	1	1	0	0	1	1	1	1	1	0	0	1	1	1	1	0
1	0	0	0	1	0	1	0	0	0	1	0	1	0	1	0	0	1
1	1	0	0	1	1	1	1	0	0	1	1	1	1	1	0	1	1
0	0	1	0	1	0	0	0	1	0	1	0	0	0	1	0	1	0
0	0	1	1	1	1	0	0	1	1	1	1	0	0	1	1	1	1

Figure 5: The translate $t_{2,3}(010100) = 101000$

Therefore

$$\nabla l(S) = \nabla(a_{n-1-j, n-1-j})_{0 \leq j \leq n-1} = (a_{n-1-j, n-1-j+i})_{0 \leq i \leq j \leq n-1},$$

$$\nabla r(S) = \nabla(a_{j, n-1})_{0 \leq j \leq n-1} = (a_{j-i, n-1-i})_{0 \leq i \leq j \leq n-1},$$

$$\nabla i(S) = \nabla(a_{0, n-1-j})_{0 \leq j \leq n-1} = (a_{i, n-1+i-j})_{0 \leq i \leq j \leq n-1}.$$

Since

$$r^3 = i^2 = (ir)^2 = id_{(\mathbb{Z}/2\mathbb{Z})^n},$$

the subgroup of $(\text{Aut}((\mathbb{Z}/2\mathbb{Z})^n), \circ)$, the group of automorphisms of the vector space of n -tuples over $\mathbb{Z}/2\mathbb{Z}$, generated by r and i is isomorphic to the dihedral group D_3

$$\langle r, i \mid r^3 = i^2 = (ir)^2 = id_{(\mathbb{Z}/2\mathbb{Z})^n} \rangle = D_3.$$

As depicted in Figure 6, it is easy to see that the multiplicity function of a Steinhaus triangle is invariant under the action of the dihedral group D_3 . Indeed, for any finite sequence S , we have

$$\mathbf{m}_{\nabla S} = \mathbf{m}_{\nabla r(S)} = \mathbf{m}_{\nabla i(S)}.$$

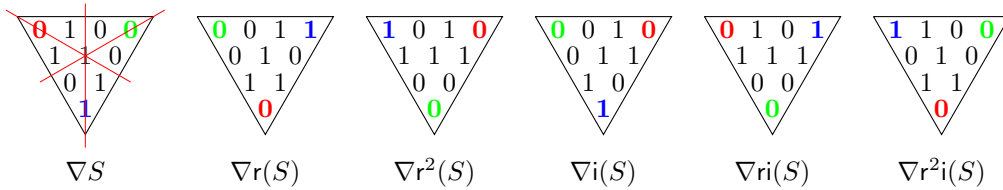


Figure 6: Action of D_3 on $\nabla(0100)$

The study of rotationally symmetric triangles and dihedrally symmetric triangles, that are triangles ∇S such that $S = r(S)$ and $S = r(S) = i(S)$, respectively, can be found in [1, 2].

Now, we consider the restrictions of r and i to the vector space \mathcal{PO}_p of p -tuples that generate p -periodic orbits. Since we only consider these restrictions, they are also denoted by r and i in the sequel.

Proposition 3.1. *For all positive integers p , we have*

$$r(\mathcal{PO}_p) = i(\mathcal{PO}_p) = \mathcal{PO}_p.$$

Proof. Let $X \in \mathcal{PO}_p$ and $\mathcal{O}_{X^\infty} = (a_{i,j})_{(i,j) \in \mathbb{N} \times \mathbb{Z}}$. Then, by definition, $r(X) = (a_{j, p-1})_{0 \leq j \leq p-1}$ and $i(X) = (a_{0, p-1-j})_{0 \leq j \leq p-1}$. Let $\mathcal{O}_{r(X)^\infty} = (b_{i,j})_{(i,j) \in \mathbb{N} \times \mathbb{Z}}$ and $\mathcal{O}_{i(X)^\infty} = (c_{i,j})_{(i,j) \in \mathbb{N} \times \mathbb{Z}}$. We will show that $b_{i,j} = a_{\overline{j-i}, \overline{-i-1}}$ and $c_{i,j} = a_{\overline{i}, \overline{i-j-1}}$ for all $i \in \mathbb{N}$ and all $j \in \mathbb{Z}$. We proceed by induction on $i \in \mathbb{N}$. For $i = 0$, by definition, we have that

$$b_{0,j} = b_{0,\overline{j}} = a_{\overline{j}, p-1} = a_{\overline{j}, \overline{-1}}$$

and

$$c_{0,j} = c_{0,\overline{j}} = a_{0, p-1-\overline{j}} = a_{\overline{0}, \overline{-j-1}}$$

for all $j \in \mathbb{Z}$. Suppose that the formulas are verified for a certain value of $i - 1 \geq 0$ and for all $j \in \mathbb{Z}$. Then, using (1),

$$b_{i,j} = b_{i-1,j-1} + b_{i-1,j} = a_{\overline{j-i},\overline{-i}} + a_{\overline{j-i+1},\overline{-i}} = a_{\overline{j-i},\overline{-i}} + a_{\overline{j-i+1},\overline{-i}} = a_{\overline{j-i},\overline{-i-1}} = a_{\overline{j-i},\overline{-i-1}}$$

and

$$c_{i,j} = c_{i-1,j-1} + c_{i-1,j} = a_{\overline{i-1},\overline{i-j-1}} + a_{\overline{i-1},\overline{i-j-2}} = a_{\overline{i-1},\overline{i-j-1}} + a_{\overline{i-1},\overline{i-j-1-1}} = a_{\overline{i-1+1},\overline{i-j-1}} = a_{\overline{i},\overline{i-j-1}}$$

for all $j \in \mathbb{Z}$. This verifies the formulas and we deduce that $b_{i,j} = b_{\overline{i},\overline{j}}$ and $c_{i,j} = c_{\overline{i},\overline{j}}$ for all $i \in \mathbb{N}$ and all $j \in \mathbb{Z}$. Then the orbit $\mathcal{O}_{r(X)}^\infty$ and $\mathcal{O}_{i(X)}^\infty$ are p -periodic. Therefore $r(X)$ and $i(X)$ are in \mathcal{PO}_p . This proves that $r(\mathcal{PO}_p) \subset \mathcal{PO}_p$ and $i(\mathcal{PO}_p) \subset \mathcal{PO}_p$ and implies that

$$\mathcal{PO}_p = r^3(\mathcal{PO}_p) \subset r^2(\mathcal{PO}_p) \subset r(\mathcal{PO}_p) \subset \mathcal{PO}_p \quad \text{and} \quad \mathcal{PO}_p = i^2(\mathcal{PO}_p) \subset i(\mathcal{PO}_p) \subset \mathcal{PO}_p.$$

This concludes the proof. \square

It follows that r and i are automorphisms of the vector space \mathcal{PO}_p and the subgroup of $(\text{Aut}(\mathcal{PO}_p), \circ)$ generated by r and i is also isomorphic to the dihedral group D_3

$$D_3 = \langle r, i \rangle = \{id_{\mathcal{PO}_p}, r, r^2, i, ri, r^2i\}.$$

More precisely, for any p -tuple X , we have

$$\begin{aligned} \mathcal{O}_{X^\infty} &= (a_{\overline{i},\overline{j}})_{(i,j) \in \mathbb{N} \times \mathbb{Z}} & \mathcal{O}_{i(X)^\infty} &= (a_{\overline{i},\overline{i-j-1}})_{(i,j) \in \mathbb{N} \times \mathbb{Z}} \\ \mathcal{O}_{r(X)^\infty} &= (a_{\overline{j-i},\overline{-i-1}})_{(i,j) \in \mathbb{N} \times \mathbb{Z}} & \mathcal{O}_{ri(X)^\infty} &= (a_{\overline{-j-1},\overline{-i-1}})_{(i,j) \in \mathbb{N} \times \mathbb{Z}} \\ \mathcal{O}_{r^2(X)^\infty} &= (a_{\overline{-j-1},\overline{i-j-1}})_{(i,j) \in \mathbb{N} \times \mathbb{Z}} & \mathcal{O}_{r^2i(X)^\infty} &= (a_{\overline{j-i},\overline{j}})_{(i,j) \in \mathbb{N} \times \mathbb{Z}} \end{aligned}$$

For instance, a representation of $\mathcal{O}_{g(010100)^\infty}$ for all $g \in D_3$ is given in Figure 7.

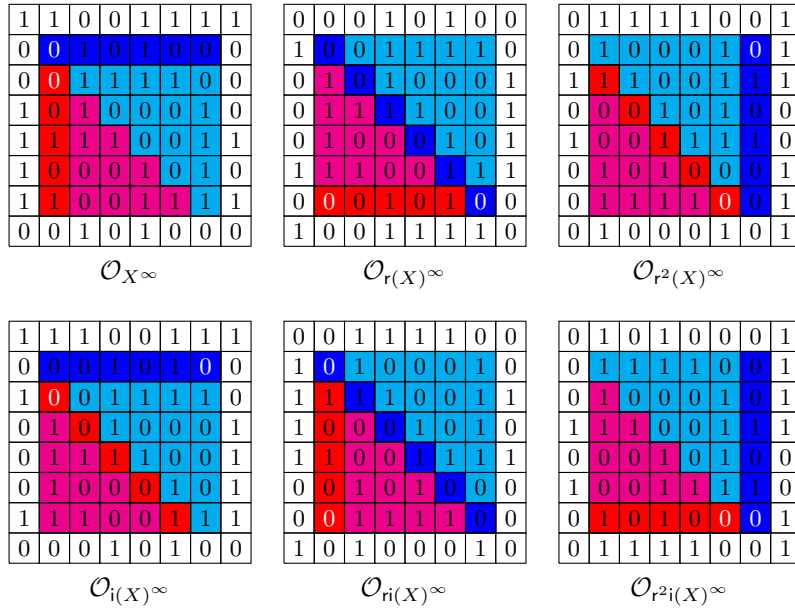


Figure 7: Action of D_3 on $\mathcal{O}_{010100}^\infty$

3.3 The symmetry group of \mathcal{PO}_p

Let G be the subgroup of $(\text{Aut}(\mathcal{PO}_p), \circ)$ generated by r , i , $\mathbf{t}_{1,0}$ and $\mathbf{t}_{0,1}$, that is,

$$G := \langle r, i, \mathbf{t}_{1,0}, \mathbf{t}_{0,1} \rangle.$$

As in D_3 , the equality $ir = r^2i$ holds in G . The equalities involving the translations are listed below.

Proposition 3.2. *For all $(u, v) \in \mathbb{Z}^2$, the equalities $r\mathbf{t}_{u,v} = \mathbf{t}_{v-u, -u}r$ and $i\mathbf{t}_{u,v} = \mathbf{t}_{u, u-v}i$ hold.*

Proof. Let $(u, v) \in \mathbb{Z}^2$ and $\mathcal{O}_{X^\infty} = (a_{i,j}^-)_{(i,j) \in \mathbb{N} \times \mathbb{Z}}$ be a p -periodic orbit. Then,

$$\mathcal{O}_{\mathfrak{t}_{u,v}(X)^\infty} = \left(a_{j-i+u-v, -i-1+u}^- \right)_{(i,j) \in \mathbb{N} \times \mathbb{Z}} = \mathcal{O}_{\mathfrak{t}_{v-u, -u}r(X)^\infty}$$

and

$$\mathcal{O}_{\mathfrak{t}_{u,v}(X)^\infty} = \left(a_{i-u, i-j-1+v-u}^- \right)_{(i,j) \in \mathbb{N} \times \mathbb{Z}} = \mathcal{O}_{\mathfrak{t}_{u, u-v}i(X)^\infty}.$$

□

From these equalities, it is clear that each element $g \in G$ can be uniquely written as

$$g = \mathfrak{t}_{u,v}r^\alpha i^\beta$$

with $u, v \in \{0, 1, \dots, p-1\}$, $\alpha \in \{0, 1, 2\}$ and $\beta \in \{0, 1\}$. Therefore G is a group of order $|G| = 6p^2$.

3.4 Equivalence classes of \mathcal{PO}_p

Now, we consider the binary relation \sim_G on the set \mathcal{PO}_p defined by $X_1 \sim_G X_2$ if and only if there exists $g \in G$ such that $X_2 = g(X_1)$. Since G is a subgroup of $(\text{Aut}(\mathcal{PO}_p), \circ)$, it is clear that \sim_G is an equivalence relation on \mathcal{PO}_p . Therefore, to search balanced triangles, it is sufficient to examine only one representative of each equivalence class in the set $\overline{\mathcal{PO}_p} := \mathcal{PO}_p / \sim_G$. In the sequel, the equivalence class of the tuple X is denoted by \overline{X} and the lexicographically smallest tuple X is used as the representative of each equivalence class \overline{X} .

For example, for $p = 6$, \mathcal{PO}_6 / \sim_G consists of 3 equivalence classes that contain the 16 tuples of \mathcal{PO}_6 generating 6-periodic orbits. More precisely,

$$\begin{aligned} \overline{\mathcal{PO}_6} = \mathcal{PO}_6 / \sim_G &= \{ \{000000\}, \{000101, 001010, 001111, 010001, 010100, 011110, 100010, \\ &\quad 100111, 101000, 110011, 111001, 111100\}, \{011011, 101101, 110110\} \} \\ &= \{ \overline{000000}, \overline{000101}, \overline{011011} \} \end{aligned}$$

since

$$\begin{array}{lll} 001010 = \mathfrak{t}_{0,5}(000101) & 100010 = \mathfrak{t}_{0,1}(000101) & 101101 = \mathfrak{t}_{0,1}(011011) \\ 001111 = \mathfrak{t}_{1,3}(000101) & 100111 = \mathfrak{t}_{1,4}(000101) & 110110 = \mathfrak{t}_{0,2}(011011) \\ 010001 = \mathfrak{t}_{0,2}(000101) & 101000 = \mathfrak{t}_{0,3}(000101) & \\ 010100 = \mathfrak{t}_{0,4}(000101) & 110011 = \mathfrak{t}_{1,5}(000101) & \\ 011110 = \mathfrak{t}_{1,2}(000101) & 111001 = \mathfrak{t}_{1,0}(000101) & \\ & 111100 = \mathfrak{t}_{1,1}(000101) & \end{array}$$

The 6-periodic orbits associated with these 3 equivalence classes are depicted in Figure 8.

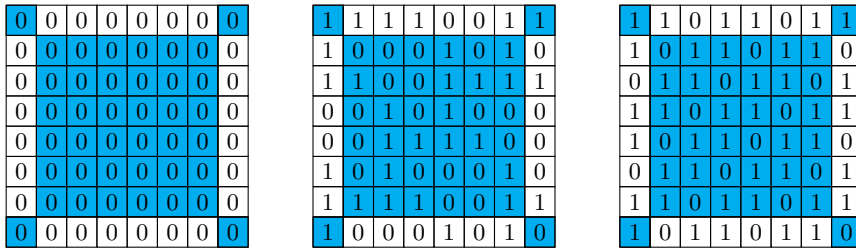


Figure 8: The set $\overline{\mathcal{PO}_6} = \{ \overline{000000}, \overline{000101}, \overline{011011} \}$

Table 2 gives $|\overline{\mathcal{PO}_p}|$ for the first few values of p .

4 Family of periodic balanced Steinhaus triangles with the same principal vertex

In this section, we determine necessary and sufficient conditions for obtaining, in a p -periodic orbit, an infinite family of balanced Steinhaus triangles with the same principal vertex.

p	1	2	3	4	5	6	7	8	9	10	11	12
$ \mathcal{PO}_p $	1	1	2^2	1	1	2^4	2^6	1	2^2	1	1	2^8
$ \overline{\mathcal{PO}_p} $	1	1	2	1	1	3	3	1	2	1	1	7
p	13	14	15	16	17	18	19	20	21	22	23	24
$ \mathcal{PO}_p $	1	2^{12}	2^{14}	1	1	2^4	1	1	2^8	1	1	2^{16}
$ \overline{\mathcal{PO}_p} $	1	13	30	1	1	3	1	1	6	1	1	92

Table 2: The first few values of $|\overline{\mathcal{PO}_p}|$

Proposition 4.1. *Let $S = X^\infty$ with $X \in \mathcal{PO}_p$, $(i_0, j_0) \in \mathbb{N} \times \mathbb{Z}$ and $r \in \{0, 1, \dots, p-1\}$. The Steinhaus triangles*

$$T_k := \nabla S(i_0, j_0, kp + r)$$

are balanced for all non-negative integers k if and only if the triangle T_0 , the multiset difference $T_1 \setminus T_0$ and the period P are balanced, with p divisible by 4.

Proof. Suppose that $(i_0, j_0) \in \mathbb{N} \times \mathbb{Z}$ and $r \in \{0, 1, \dots, p-1\}$ are fixed. Let $k \in \mathbb{N}$. Then, from the periodicity of \mathcal{O}_S , we know that the Steinhaus triangle $T_k = \nabla S(i_0, j_0, kp + r)$ can be decomposed into elementary blocks T_0 , $T_1 \setminus T_0$ and P , as represented in Figure 9 for $k = 5$.

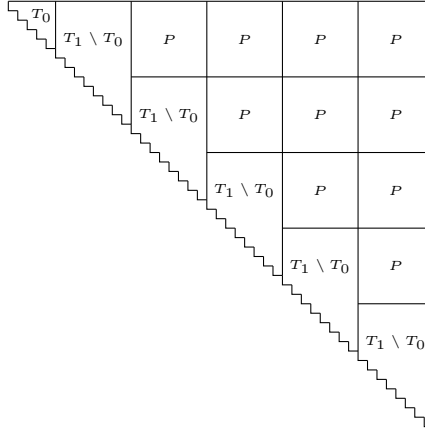


Figure 9: Decomposition of T_5

More precisely, the triangle T_k is constituted by one block T_0 , k blocks $T_1 \setminus T_0$ and $\binom{k}{2}$ blocks P . It follows that the multiplicity function \mathbf{m}_{T_k} of the triangle T_k must verify that

$$\mathbf{m}_{T_k} = \mathbf{m}_{T_0} + k\mathbf{m}_{T_1 \setminus T_0} + \binom{k}{2}\mathbf{m}_P.$$

First, suppose that T_0 , $T_1 \setminus T_0$ and P are balanced with p divisible by 4. Since p is divisible by 4, it is clear that the cardinalities $|T_1 \setminus T_0| = pr + \binom{p+1}{2}$ and $|P| = p^2$ are even. Therefore, since the multiset difference $T_1 \setminus T_0$ and the period P are balanced, the multiplicity functions $\mathbf{m}_{T_1 \setminus T_0}$ and \mathbf{m}_P are constant. It follows that $\delta_{T_k} = \delta_{T_0} \in \{0, 1\}$ and thus the triangles T_k are balanced for all non-negative integers k .

Conversely, suppose that the triangles T_k are balanced for all non-negative integers k . Thus, the value of $(\mathbf{m}_{T_k}(0) - \mathbf{m}_{T_k}(1)) - (\mathbf{m}_{T_0}(0) - \mathbf{m}_{T_0}(1))$ is in the set $\{-2, -1, 0, 1, 2\}$ for all $k \in \mathbb{N}$. Therefore,

$$\lim_{k \rightarrow \infty} \frac{(\mathbf{m}_{T_k}(0) - \mathbf{m}_{T_k}(1)) - (\mathbf{m}_{T_0}(0) - \mathbf{m}_{T_0}(1))}{k} = 0.$$

It follows that

$$\lim_{k \rightarrow \infty} (\mathbf{m}_{T_1 \setminus T_0}(0) - \mathbf{m}_{T_1 \setminus T_0}(1)) + \frac{k-1}{2}(\mathbf{m}_P(0) - \mathbf{m}_P(1)) = 0.$$

Then, we deduce that $\mathbf{m}_{T_1 \setminus T_0}(0) - \mathbf{m}_{T_1 \setminus T_0}(1) = \mathbf{m}_P(0) - \mathbf{m}_P(1) = 0$. Therefore the multiset difference $T_1 \setminus T_0$ and the period P are balanced and with even cardinalities. Finally, since $|P| = p^2$ and $|T_1 \setminus T_0| = pr + \binom{p+1}{2}$, we conclude that p must be divisible by 4 in this case. \square

This is the reason why, in the sequel of this paper, we only consider p -periodic orbits with a balanced period and where p is divisible by 4.

Note that the period of the orbit generated from every element of a same equivalence class of $\overline{\mathcal{PO}_p}$ has the same multiplicity function. Let us denote by $\overline{\mathcal{BPO}_p}$ the set of all the equivalence classes of $\overline{\mathcal{PO}_p}$ having a balanced period. Table 3 gives $|\overline{\mathcal{BPO}_p}|$ for the first few values of p divisible by 4.

p	4	8	12	16	20	24
$ \mathcal{PO}_p $	1	1	256	1	1	65536
$ \overline{\mathcal{PO}_p} $	1	1	7	1	1	92
$ \overline{\mathcal{BPO}_p} $	0	0	2	0	0	17

Table 3: The first few values of $|\overline{\mathcal{BPO}_p}|$

More precisely, we obtain

$$\overline{\mathcal{BPO}_{12}} = \{\overline{Y_1}, \overline{Y_2}\} = \{000001110111, 000101000101\}$$

and $\overline{\mathcal{BPO}_{24}} = \{\overline{X_1}, \overline{X_2}, \dots, \overline{X_{17}}\}$, where the 17 representatives X_i are given in Table 4. Note that $X_{16} = Y_1^2$ and $X_{17} = Y_2^2$. Therefore the orbits $\mathcal{O}_{X_{16}^\infty}$ and $\mathcal{O}_{X_{17}^\infty}$ correspond to $\mathcal{O}_{Y_1^\infty}$ and $\mathcal{O}_{Y_2^\infty}$, respectively. A representation of the orbits generated from the elements of $\overline{\mathcal{BPO}_{12}}$ and $\overline{\mathcal{BPO}_{24}}$ can be found in Appendix A.

i	X_i	i	X_i
1	000000000110101101101011	10	000000101001110110011111
2	000000001001011110010111	11	000001000010010100100001
3	000000010010011000100111	12	000001000101101101011111
4	000000010110111001101111	13	000001001000001110000111
5	000000010111110001111101	14	00000100111111011111001
6	000000100001111100011101	15	000001100001100100011111
7	000000100010100100101011	16	000001110111000001110111
8	000000100011101100111001	17	000101000101000101000101
9	000000101000111110001101		

Table 4: The representatives X_i of $\overline{\mathcal{BPO}_{24}} = \{\overline{X_1}, \overline{X_2}, \dots, \overline{X_{17}}\}$

5 Periodic balanced triangles

In this section we will prove Theorem 1.2, the main result of this paper.

Let X be a p -tuple of $\mathbb{Z}/2\mathbb{Z}$, with p divisible by 4, such that \overline{X} is in $\overline{\mathcal{BPO}_p}$ and let $S := X^\infty$. Now, for each remainder $r \in \{0, 1, \dots, p-1\}$ and for each position $(i_0, j_0) \in \{0, 1, \dots, p-1\}^2$, we test if the blocks $\nabla S(i_0, j_0, r)$ and $\nabla S(i_0, j_0, p+r) \setminus \nabla S(i_0, j_0, r)$ are balanced. If this is the case, we know from Proposition 4.1 that the Steinhaus triangles $\nabla S(i_0, j_0, kp+r)$ are balanced for all non-negative integers k .

Let $\mathcal{R}_{\overline{X}}$ denote the set of remainders $r \in \{0, 1, \dots, p-1\}$ for which there exists a position $(i_0, j_0) \in \{0, 1, \dots, p-1\}^2$ such that the Steinhaus triangles $\nabla S(i_0, j_0, kp+r)$ are balanced for all non-negative integers k .

From Table 3, the first values of p , divisible by 4, for which $\overline{\mathcal{BPO}_p} \neq \emptyset$ are 12 and 24. For $p = 12$, we find that $\mathcal{R}_{\overline{Y_i}} = \emptyset$ for each of the two equivalence classes $\overline{\mathcal{BPO}_{12}} = \{\overline{Y_1}, \overline{Y_2}\}$. For $p = 24$, we find that $\mathcal{R}_{\overline{X_i}} \neq \emptyset$ for the first 15 of the 17 equivalence classes of $\overline{\mathcal{BPO}_{24}} = \{\overline{X_1}, \overline{X_2}, \dots, \overline{X_{17}}\}$. Note that the two

equivalence classes \overline{X} of $\overline{\mathcal{BPO}}_{24}$ such that $\mathcal{R}_{\overline{X}} = \emptyset$ are exactly of the form $X = Y^2$ with $\overline{Y} \in \overline{\mathcal{BPO}}_{12}$ (as already seen $X_{16} = Y_1^2$ and $X_{17} = Y_2^2$). More precisely, Table 5 gives the exact number of remainders constituting $\mathcal{R}_{\overline{X}}$ for each $\overline{X} \in \overline{\mathcal{BPO}}_{24}$.

i	X_i	$ \mathcal{R}_{\overline{X}_i} $	i	X_i	$ \mathcal{R}_{\overline{X}_i} $
1	000000000110101101101011	18	10	000000101001110110011111	23
2	000000001001011110010111	16	11	000001000010010100100001	24
3	000000010010011000100111	23	12	000001000101101101011111	23
4	000000010110111001101111	24	13	000001001000001110000111	20
5	000000010111110001111101	17	14	000001001111110111111001	20
6	000000100001111100011101	24	15	000001100001100100011111	23
7	000000100010100100101011	24	16	000001110111000001110111	0
8	000000100011101100111001	24	17	000101000101000101000101	0
9	000000101000111110001101	24			

Table 5: $|\mathcal{R}_{\overline{X}}|$ for all $\overline{X} \in \overline{\mathcal{BPO}}_{24}$

For six equivalence classes \overline{X} of $\overline{\mathcal{BPO}}_{24}$, we find that $|\mathcal{R}_{\overline{X}}| = 24$ and thus, from these 24-tuples, we obtain the proof of Theorem 1.2 for Steinhaus triangles, i.e., there exist periodic orbits containing balanced Steinhaus triangles of size n for all $n \geq 1$.

For instance, in the orbit \mathcal{O}_{X_9} associated with the 24-tuple $X_9 = 000000101000111110001101$, the existence of balanced Steinhaus triangles for all the possible sizes can be obtained from at least 4 positions. Table 6 gives positions (i_0, j_0) in the orbit \mathcal{O}_{X_9} for which the Steinhaus triangles $\nabla X_9^\infty(i_0, j_0, 24k+r)$ are balanced for all non-negative integers k and the corresponding 24-tuples Z such that $\nabla X_9^\infty(i_0, j_0, 24k+r) = \nabla Z^\infty[24k+r]$.

r	(i_0, j_0)	Z
0, 4, 7, 8, 12, 13, 15, 16, 21, 22, 23	(1, 11)	010000100101110000011110
1, 2, 3, 5, 10, 17, 18, 19, 20, 21	(1, 6)	111100100001001011100000
0, 1, 6, 9, 14, 22, 23	(6, 9)	000111010101000101001100
11	(3, 3)	000110011101001011001011

Table 6: Balanced Steinhaus triangles $\nabla X_9^\infty(i_0, j_0, 24k+r) = \nabla Z^\infty[24k+r]$

The family of balanced Steinhaus triangles $\nabla X_9^\infty(6, 9, 24k+6)$, appearing in the orbit \mathcal{O}_{X_9} for $X_9 = 000000101000111110001101$, is depicted in Figure 10, where empty and full squares correspond to 0 and 1 respectively. Indeed, we can verify that the blocks $T_0 := \nabla X_9^\infty(6, 9, 6)$, $T_1 \setminus T_0 := \nabla X_9^\infty(6, 9, 30) \setminus \nabla X_9^\infty(6, 9, 6)$ and the period P are balanced, since their multiplicity functions, given in Table 7, are constant or almost constant.

x	$\mathbf{m}_{T_0}(x)$	$\mathbf{m}_{T_1 \setminus T_0}(x)$	$\mathbf{m}_P(x)$
0	11	222	288
1	10	222	288

Table 7: The multiplicity functions of T_0 , $T_1 \setminus T_0$ and P

The following proposition concludes the proof of Theorem 1.2 by showing that in an orbit \mathcal{O}_{X^∞} generated from a p -tuple X such that $\overline{X} \in \overline{\mathcal{BPO}}_p$, the existence of balanced Steinhaus triangles implies that of balanced generalized Pascal triangles.

Proposition 5.1. *Let $S = X^\infty$ with $\overline{X} \in \overline{\mathcal{BPO}}_p$, $(i_0, j_0) \in \mathbb{N} \times \mathbb{Z}$, $r \in \{0, 1, \dots, p-1\}$ and p divisible by 4. Then, the Steinhaus triangles $\nabla S(i_0, j_0, kp+r)$ are balanced for all non-negative integers k if and only if the generalized Pascal triangles $\Delta S(i_0+r+1, j_0+r, kp+(p-1-r))$ are balanced for all non-negative integers k .*



Figure 10: The balanced Steinhaus triangles $\nabla X_9^\infty(6, 9, 24k + 6)$

Proof. As depicted in Figure 11, we consider in the orbit $\mathcal{O}_S = (a_{i,j})_{(i,j) \in \mathbb{N} \times \mathbb{Z}}$ the elementary blocks U_0 , U_1 , V_0 and V_1 defined by

$$\begin{aligned} U_0 &= \nabla S(i_0, j_0, r), \\ U_1 &= \nabla S(i_0, j_0, p+r) \setminus (\nabla S(i_0, j_0, r) \cup \nabla S(i_0+p, j_0+p, r)), \\ V_1 &= \Delta S(i_0+r+1, j_0+r, r'), \\ V_0 &= \Delta S(i_0+r+1, j_0+r, p+r') \setminus (\Delta S(i_0+r+1, j_0+r, r') \cup \Delta S(i_0+p+r+1, j_0+p+r, r')), \end{aligned}$$

where $r' = p-1-r$, and the period P is

$$P = \{a_{p+r+i,j} \mid i, j \in \{0, 1, \dots, p-1\}\}.$$

Since \mathcal{O}_S is p -periodic with P balanced and p divisible by 4, we already know from Proposition 4.1 that the Steinhaus triangles $\nabla S(i_0, j_0, kp+r)$ are balanced for all non-negative integers k if and only if U_0 and $U_1 \cup U_0$ are balanced.

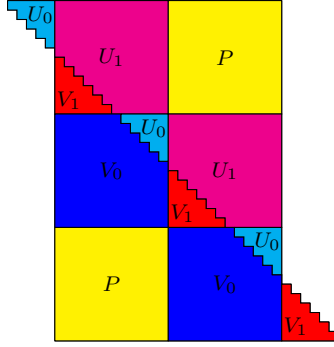


Figure 11: Decomposition of \mathcal{O}_S into elementary blocks U_0 , U_1 , V_0 and V_1

Similarly, the generalized Pascal triangles $\Delta S(i_0+r+1, j_0+r, kp+p-1-r)$ are balanced for all non-negative integers k if and only if V_1 and $V_0 \cup V_1$ are balanced.

First, since

$$U_0 \cup V_0 = U_1 \cup V_1 = P$$

is balanced with an even cardinality, then we have $\mathbf{m}_{U_0 \cup V_0}(x) = \mathbf{m}_{U_1 \cup V_1}(x) = \frac{p^2}{2}$ for all $x \in \mathbb{Z}/2\mathbb{Z}$. It follows that

$$\mathbf{m}_{U_0 \cup U_1}(x) = \mathbf{m}_{U_0}(x) + \mathbf{m}_{U_1}(x) = (p^2/2 - \mathbf{m}_{V_0}(x)) + (p^2/2 - \mathbf{m}_{V_1}(x)) = p^2 - \mathbf{m}_{V_0 \cup V_1}(x)$$

for all $x \in \mathbb{Z}/2\mathbb{Z}$. Therefore $\delta \mathbf{m}_{U_0 \cup U_1} = \delta \mathbf{m}_{V_0 \cup V_1}$. Moreover,

$$\mathbf{m}_{U_0}(x) - \mathbf{m}_{V_1}(x) = (\mathbf{m}_{U_0}(x) + \mathbf{m}_{U_1}(x)) - (\mathbf{m}_{U_1}(x) + \mathbf{m}_{V_1}(x)) = \mathbf{m}_{U_0 \cup U_1}(x) - p^2/2 \quad (2)$$

for all $x \in \mathbb{Z}/2\mathbb{Z}$. Since p is divisible by 4, we already know from Proposition 4.1 that $U_0 \cup U_1$ has an even number of elements. Therefore, if $U_0 \cup U_1$ is balanced, then $\delta_{U_0 \cup U_1} = 0$ and we deduce from (2) that

$$\mathbf{m}_{U_0}(1) - \mathbf{m}_{U_0}(0) = \mathbf{m}_{V_1}(1) - \mathbf{m}_{V_1}(0),$$

that is $\delta_{U_0} = \delta_{V_1}$. Similarly, we can see that if $V_0 \cup V_1$ is balanced, then $\delta_{U_0} = \delta_{V_1}$. Therefore the blocks U_0 and $U_1 \cup U_0$ are balanced if and only if the blocks V_1 and $V_0 \cup V_1$ are balanced. This concludes the proof. \square

Using Proposition 5.1 and the families of balanced Steinhaus triangles appearing in the orbit $\mathcal{O}_{X_9^\infty}$ associated with the 24-tuple $X_9 = 000000101000111110001101$ given in Table 6, we obtain the existence of balanced generalized Pascal triangles for all the possible sizes. For all non-negative integers k , we know that the generalized Pascal triangle $\Delta X_9^\infty(i_0, j_0, 24k+r)$ is balanced for the values of Table 8 since the Steinhaus triangle $\nabla X_9^\infty(i_0+r+1, j_0+r, 24k+(23-r))$ is. The corresponding 24-tuples Z_l and Z_r such that $\Delta X_9^\infty(i_0, j_0, 24k+r) = \Delta(Z_l^\infty[24k+r], Z_r^\infty[24k+r])$ are also given in Table 8.

Moreover, in the orbit $\mathcal{O}_{X_9^\infty}$ associated with the 24-tuple $X_9 = 000000101000111110001101$, the existence of balanced generalized Pascal triangles for all the possible sizes can also be obtained from only 6 positions. This result is not obtained by using Proposition 5.1 but by testing, at each position (i_0, j_0) and for each remainder r , if the elementary blocks V_1 and $V_0 \cup V_1$ are balanced, where $V_1 = \Delta X_9^\infty(i_0, j_0, r)$ and $V_0 = \Delta X_9^\infty(i_0, j_0, p+r) \setminus (\Delta X_9^\infty(i_0, j_0, r) \cup \Delta X_9^\infty(i_0+p, j_0+p, r))$. The corresponding values appear in Table 9.

r	(i_0, j_0)	$p - 1 - r$	$(i_0 + r - p, j_0 + r + 1 - p)$	Z_l	Z_r
0	(25, 34)	23	(1, 11)	011110000101011000101110	001100100000100000111010
1	(24, 33)	22	(1, 11)	010001000111110100111001	000110010000010000011101
2	(23, 32)	21	(1, 11)	111001100100001110100101	100011001000001000001110
3	(22, 26)	20	(1, 6)	110001011100111100001010	110011110010111011100001
4	(21, 25)	19	(1, 6)	101001110010100010001111	111001111001011101110000
5	(20, 24)	18	(1, 6)	011101001011110011001000	0111001111100101110111000
6	(19, 23)	17	(1, 6)	010011101110001010101100	001110011110010111011100
7	(18, 27)	16	(1, 11)	011001000011010001010000	011101000110010000010000
8	(17, 26)	15	(1, 11)	010101100010111001111000	001110100011001000001000
9	(21, 23)	14	(6, 9)	001110111000101010110001	011000011000010011100101
10	(15, 24)	13	(1, 11)	010000111010010111100110	000011101000110010000010
11	(14, 23)	12	(1, 11)	011000100111011100010101	000001110100011001000001
12	(15, 14)	11	(3, 3)	011111110100110100110010	001010010111111101010110
13	(12, 16)	10	(1, 6)	101111001100100001110100	101110000111001111001011
14	(16, 18)	9	(6, 9)	001111000010101100010111	001010110000110000100111
15	(10, 19)	8	(1, 11)	001101000101000001100100	000100000111010001100100
16	(9, 18)	7	(1, 11)	001011100111100001010110	000010000011101000110010
17	(13, 15)	6	(6, 9)	100010101011000100111011	111001010110000110000100
18	(7, 11)	5	(1, 6)	000011001000011010001010	010111011100001110011110
19	(6, 15)	4	(1, 11)	011101110001010101100010	010000010000011101000110
20	(5, 9)	3	(1, 6)	100011111010011100101000	100101110111000011100111
21	(4, 8)	2	(1, 6)	110010000111010010111100	110010111011100001110011
22	(3, 7)	1	(1, 6)	101011000100111011100010	111001011101110000111001
23	(2, 11)	0	(1, 11)	010100000110010000110100	011001000001000001110100

Table 8: Balanced generalized Pascal triangles $\Delta X_9^\infty(i_0, j_0, 24k + r) = \Delta(Z_l^\infty[24k + r], Z_r^\infty[24k + r])$

r	(i_0, j_0)	Z_l	Z_r
1, 7, 15, 23	(0, 9)	010001000111110100111001	000110010000010000011101
4, 5, 12, 13, 21	(7, 22)	011111110100110100110010	001010010111111101010110
3, 6, 14, 19, 22	(7, 4)	011110011111101110000010	010001001010001011100110
2, 10, 18, 20	(4, 15)	100111011100010101011000	110100010100011010010111
0, 8, 16, 22	(1, 2)	001011100111100001010110	000010000011101000110010
1, 3, 9, 11, 17	(6, 7)	011000100111011100010101	000001110100011001000001

Table 9: Other balanced triangles $\Delta X_9^\infty(i_0, j_0, 24k + r) = \Delta(Z_l^\infty[24k + r], Z_r^\infty[24k + r])$

6 Periodic balanced triangles modulo m

The definitions of Steinhaus and generalized Pascal triangles can be extended in $\mathbb{Z}/m\mathbb{Z}$ by considering the sum modulo m as the local rule, instead of the sum modulo 2. Examples of Steinhaus and generalized Pascal triangles modulo 7 are depicted in Figure 12.

The triangle T is said to be *balanced* if its multiplicity function is constant or almost constant, i.e., if

$$\delta \mathbf{m}_T := \max \{ |\mathbf{m}_T(x_1) - \mathbf{m}_T(x_2)| \mid x_1, x_2 \in \mathbb{Z}/m\mathbb{Z} \} \in \{0, 1\}.$$

Note that, when the triangle T is of size n such that the triangular number $\binom{n+1}{2}$ is divisible by m , the triangle T is balanced if $\delta \mathbf{m}_T = 0$, i.e., if the multiplicity function \mathbf{m}_T is constant, equal to $\frac{1}{m} \binom{n+1}{2}$. For example, the triangles in Figure 12, $\nabla(2330445)$ and $\Delta(012153, 065624)$, are balanced in $\mathbb{Z}/7\mathbb{Z}$ since they contain all the elements of $\mathbb{Z}/7\mathbb{Z}$ with the same multiplicity.

This generalization was introduced in [15], where the author posed the following problem.

Molluzzo Problem. Does there exist, for any positive integers m and n such that the triangular number $\binom{n+1}{2}$ is divisible by m , a balanced Steinhaus triangle modulo m of size n ?

This problem is still largely open. It is positively solved only for $m = 2$ (Steinhaus Problem), 4 (see [8]), 5, 7 (see [4]) and for all $m = 3^k$ with $k \in \mathbb{N}$ (see [4, 5]). It is also known [4] that there exist some

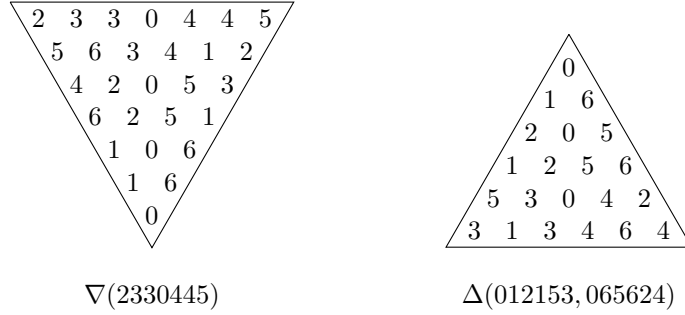


Figure 12: Steinhaus and generalized Pascal triangles in $\mathbb{Z}/7\mathbb{Z}$

values of m and n for which there do not exist balanced Steinhaus triangles: for $n = 5$ and $m = 15$ or $n = 6$ and $m = 21$.

In this section, some of these solutions are recalled because they involve balanced triangles that are also periodic.

First, in [5], it was proved that, for any odd number m , the Steinhaus triangles generated from an arithmetic progression with an invertible common difference in $\mathbb{Z}/m\mathbb{Z}$ and of length n is balanced for all $n \equiv 0$ or $-1 \pmod{\text{ord}_m(2^m)m}$, where $\text{ord}_m(2^m)$ is the multiplicative order of 2^m modulo m . For instance, for $(i \pmod m)_{i \in \mathbb{Z}}$, the sequence of the integers modulo m , the Steinhaus triangle $\nabla(0, 1, 2, \dots, n-1)$ is balanced in $\mathbb{Z}/m\mathbb{Z}$ for all $n \equiv 0$ or $-1 \pmod{\text{ord}_m(2^m)m}$. In the proof of this result, it appears that the orbit generated from any arithmetic progression is periodic of period $\text{ord}_m(2^m)m$. This implies that all these balanced Steinhaus triangles modulo an odd number m are also $\text{ord}_m(2^m)m$ -periodic. Note that a generalization of this result in higher dimensions for balanced simplices can be found in [7] and these simplices also have periodic structure.

In [6], the following integer sequence $S = (a_j)_{j \in \mathbb{Z}}$ defined by

$$\begin{cases} a_{3j} &= j, \\ a_{3j+1} &= -1 - 2j, \\ a_{3j+2} &= 1 + j, \end{cases}$$

for all $j \in \mathbb{Z}$, is considered. Note that this sequence is an interlacing of three arithmetic progressions. It was proved that, for every odd number m , the orbit of the projection of S in $\mathbb{Z}/m\mathbb{Z}$ contains balanced Steinhaus triangles of size n , for all n divisible by m and for all $n \equiv -1 \pmod{3m}$, and balanced generalized Pascal triangles of size n , for all $n \equiv -1 \pmod{3m}$ and for all n divisible by $3m$. It was proved in [6] that the orbit of this special sequence modulo m is periodic of period $6m$. Thus, there exist periodic balanced triangles of these size modulo m odd.

All these results lead to consider the following subproblem of the Molluzzo Problem.

Problem 2. Does there exist, for any positive integer m , infinitely many periodic balanced (Steinhaus or generalized Pascal) triangles modulo m ?

This problem is positively solved for any odd number m (see [5, 6]), for $m = 2$ (the present paper), for $m = 4$ only for Steinhaus triangles (see [8]) and for $m \in \{6, 8, 10\}$ (see [9]). It remains to analyse the case where m is even and $m \geq 12$.

Acknowledgments

The author would like to thank the anonymous referees for the time spent reading this manuscript and for useful comments and remarks, which improved the presentation of the paper.

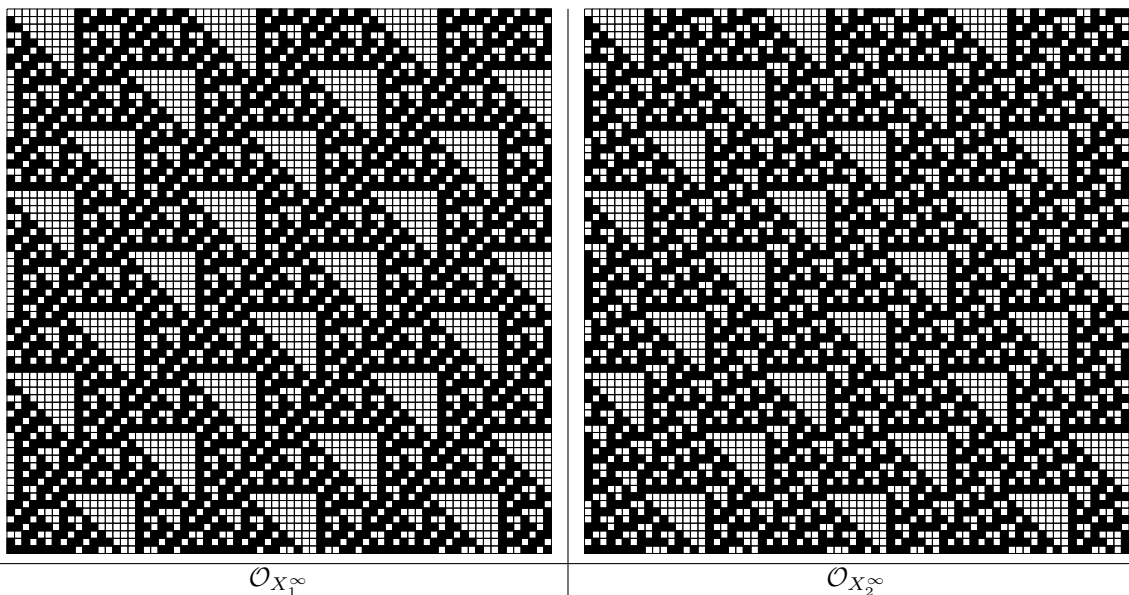
References

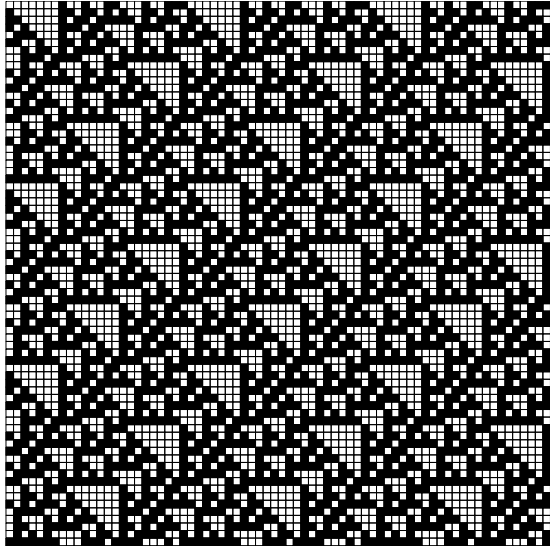
- [1] André Barbé, *Symmetric patterns in the cellular automaton that generates Pascal's triangle modulo 2*, Discrete Appl. Math. **105** (2000), no. 1–3, 1–38.
- [2] Josep M. Brunat and Montserrat Maureso, *Symmetries in Steinhaus triangles and in generalized Pascal triangles*, Integers **11** (2011), A1.

- [3] Gerard J. Chang, *Binary triangles*, Bull. Inst. Math. Acad. Sinica **11** (1983), no. 2, 209–225.
- [4] Jonathan Chappelon, *Graphes de Steinhaus réguliers et triangles de Steinhaus dans les groupes cycliques*, Ph.D. thesis, Université du Littoral Côte d’Opale, 2008.
- [5] ———, *On a problem of Molluzzo concerning Steinhaus triangles in finite cyclic groups*, Integers **8** (2008), no. 1, A37.
- [6] ———, *A universal sequence of integers generating balanced Steinhaus figures modulo an odd number*, J. Combin. Theory Ser. A **118** (2011), no. 1, 291–315.
- [7] ———, *Balanced simplices*, Adv. in Appl. Math. **62** (2015), 74–117.
- [8] Jonathan Chappelon and Shalom Eliahou, *On the problem of Molluzzo for the modulus 4*, Integers **12** (2012), A18.
- [9] Shalom Eliahou and Thierry Gensane, *Manuscript in preparation*.
- [10] Shalom Eliahou and Delphine Hachez, *On a problem of Steinhaus concerning binary sequences*, Experiment. Math. **13** (2004), no. 2, 215–229.
- [11] ———, *On symmetric and antisymmetric balanced binary sequences*, Integers **5** (2005), no. 1, A6.
- [12] Shalom Eliahou, Juan Manuel Marín, and María Pastora Revuelta, *Zero-sum balanced binary sequences*, Integers **7** (2007), no. 2, A11.
- [13] Heiko Harborth, *Solution of Steinhaus’s problem with plus and minus signs*, J. Combin. Theory Ser. A **12** (1972), 253–259.
- [14] Heiko Harborth and Glenn Hurlbert, *On the number of ones in general binary Pascal triangles*, J. Combin. Math. Combin. Comput. **54** (2005), 99–110.
- [15] John C. Molluzzo, *Steinhaus graphs*, Theory and applications of graphs (Proc. Internat. Conf., Western Mich. Univ., Kalamazoo, Mich., 1976), Lecture Notes in Math., vol. 642, Springer, Berlin, 1978, pp. 394–402.
- [16] Hugo Steinhaus, *One hundred problems in elementary mathematics*, Basic Books, Inc., New York, 1964.

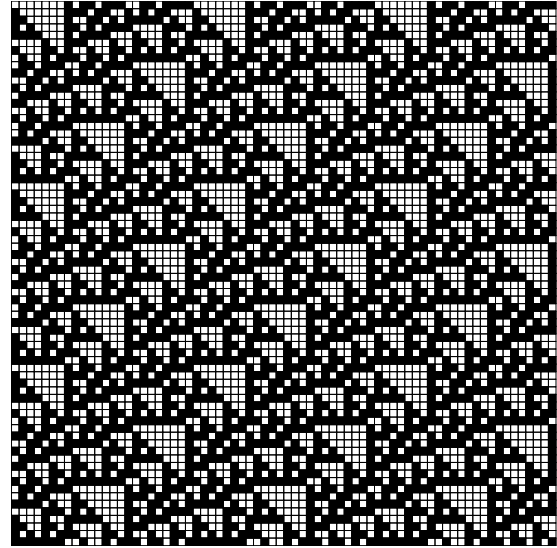
A The 24-periodic orbits with balanced periods

In this appendix, the orbits of representatives X_i , for all the 17 elements of $\overline{\mathcal{BP}\mathcal{O}_{24}} = \{\overline{X_1}, \overline{X_2}, \dots, \overline{X_{17}}\}$, are given. Moreover, we have also obtained the orbits of the elements of $\overline{\mathcal{BP}\mathcal{O}_{12}} = \{\overline{Y_1}, \overline{Y_2}\}$. Indeed, as already remarked, we have $X_{16} = Y_1^2$ and $X_{17} = Y_2^2$. Therefore the orbits $\mathcal{O}_{X_{16}^\infty}$ and $\mathcal{O}_{X_{17}^\infty}$ correspond to $\mathcal{O}_{Y_1^\infty}$ and $\mathcal{O}_{Y_2^\infty}$, respectively.

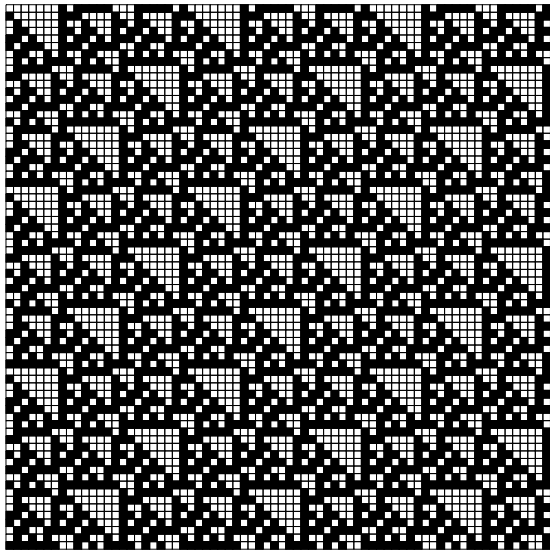




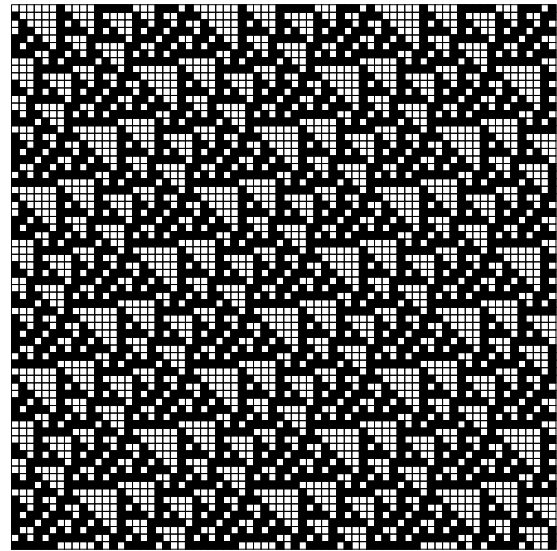
$\mathcal{O}_{X_3^\infty}$



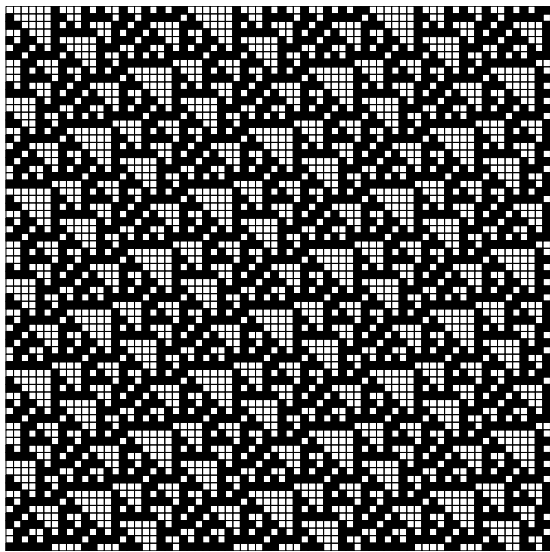
$\mathcal{O}_{X_4^\infty}$



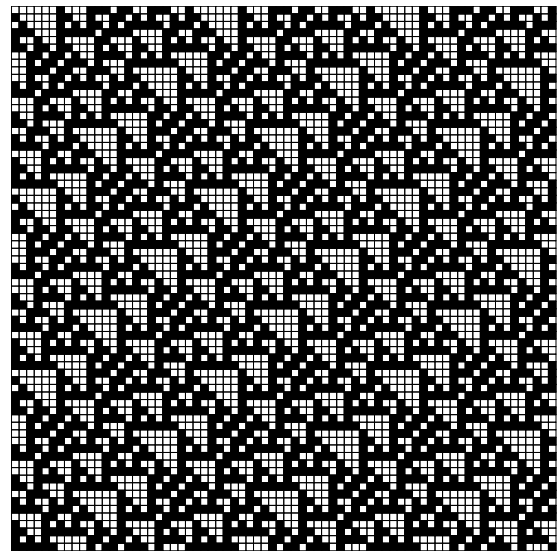
$\mathcal{O}_{X_5^\infty}$



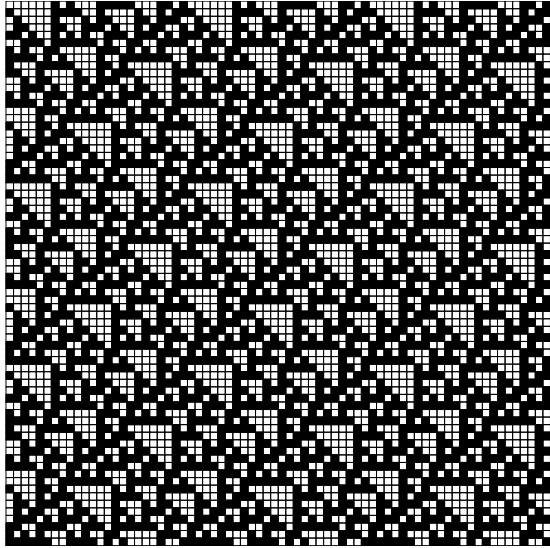
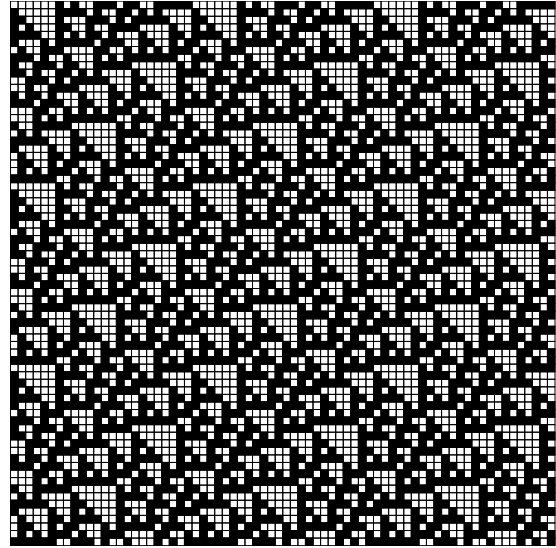
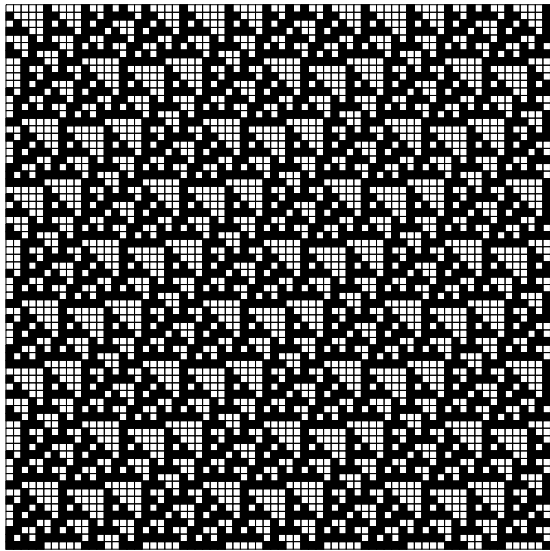
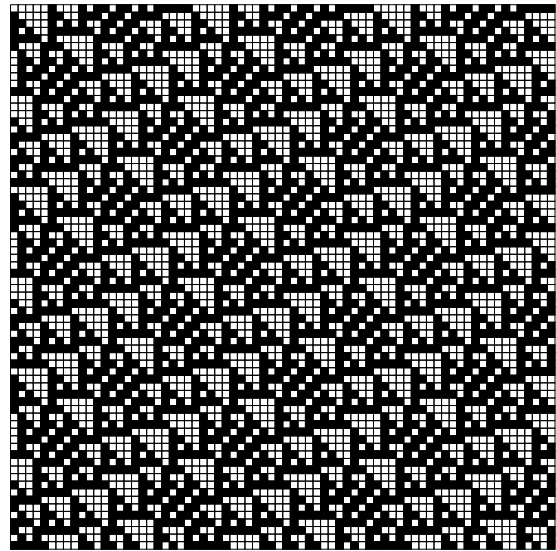
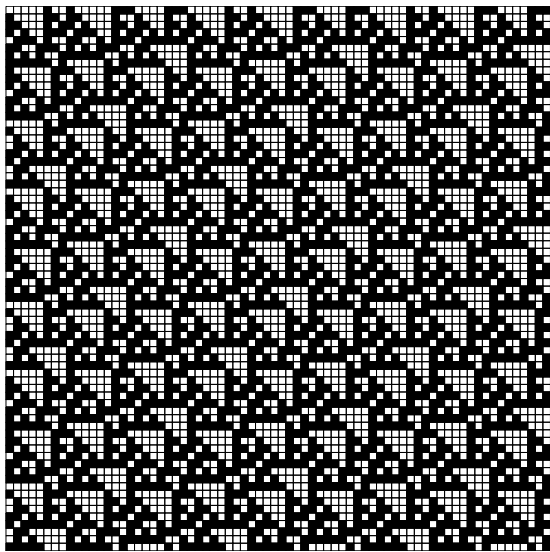
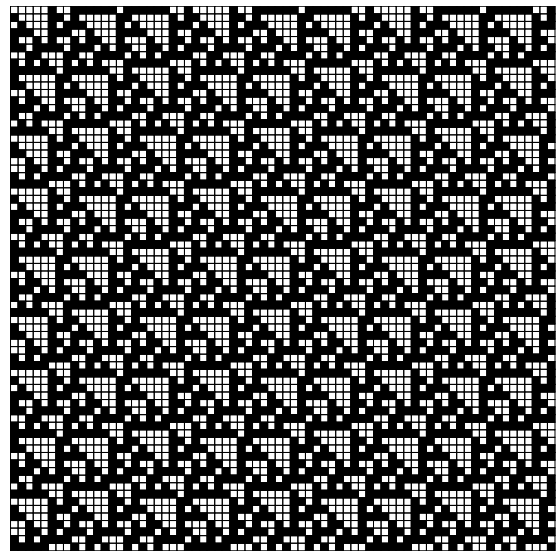
$\mathcal{O}_{X_6^\infty}$

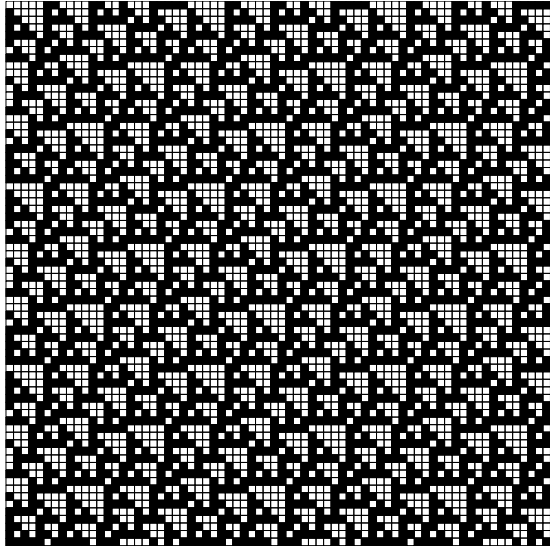


$\mathcal{O}_{X_7^\infty}$

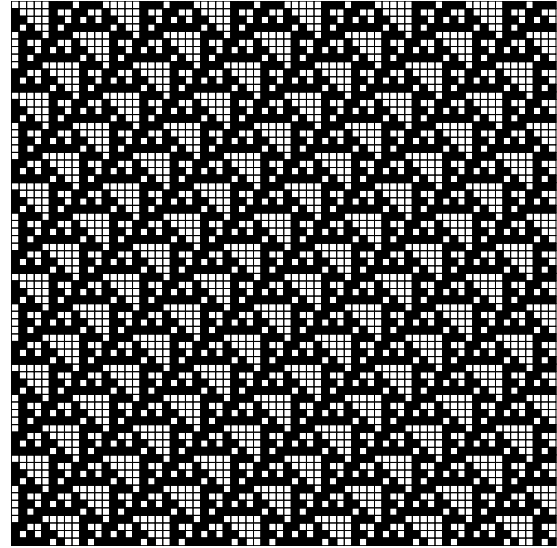


$\mathcal{O}_{X_8^\infty}$

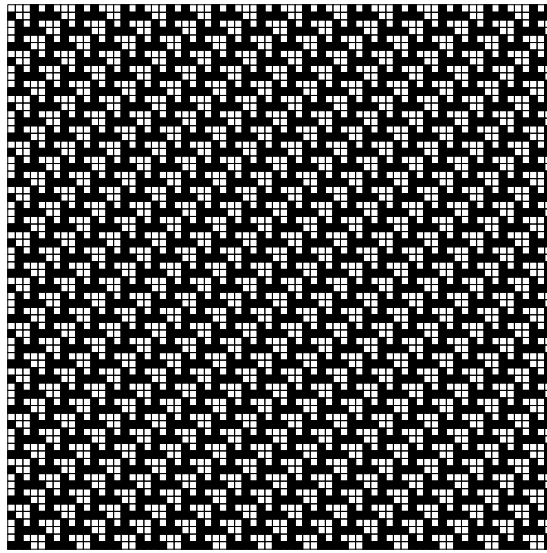
 $\mathcal{O}_{X_9^\infty}$  $\mathcal{O}_{X_{10}^\infty}$  $\mathcal{O}_{X_{11}^\infty}$  $\mathcal{O}_{X_{12}^\infty}$  $\mathcal{O}_{X_{13}^\infty}$  $\mathcal{O}_{X_{14}^\infty}$



$$\mathcal{O}_{X_{15}^\infty}$$



$$\mathcal{O}_{X_{16}^\infty} = \mathcal{O}_{Y_1^\infty}$$



$$\mathcal{O}_{X_{17}^\infty} = \mathcal{O}_{Y_2^\infty}$$