



Formation of casein micelle in mammary epithelial cell

Annabelle Le Parc, Joëlle Léonil, Eric Chanat

► To cite this version:

Annabelle Le Parc, Joëlle Léonil, Eric Chanat. Formation of casein micelle in mammary epithelial cell. 8. EMBO/Annaberg Workshop, Protein & Lipid function in secretion and endocytosis, Jan 2010, Goldegg am See, Austria. hal-01454498

HAL Id: hal-01454498

<https://hal.science/hal-01454498>

Submitted on 6 Jun 2020

HAL is a multi-disciplinary open access archive for the deposit and dissemination of scientific research documents, whether they are published or not. The documents may come from teaching and research institutions in France or abroad, or from public or private research centers.

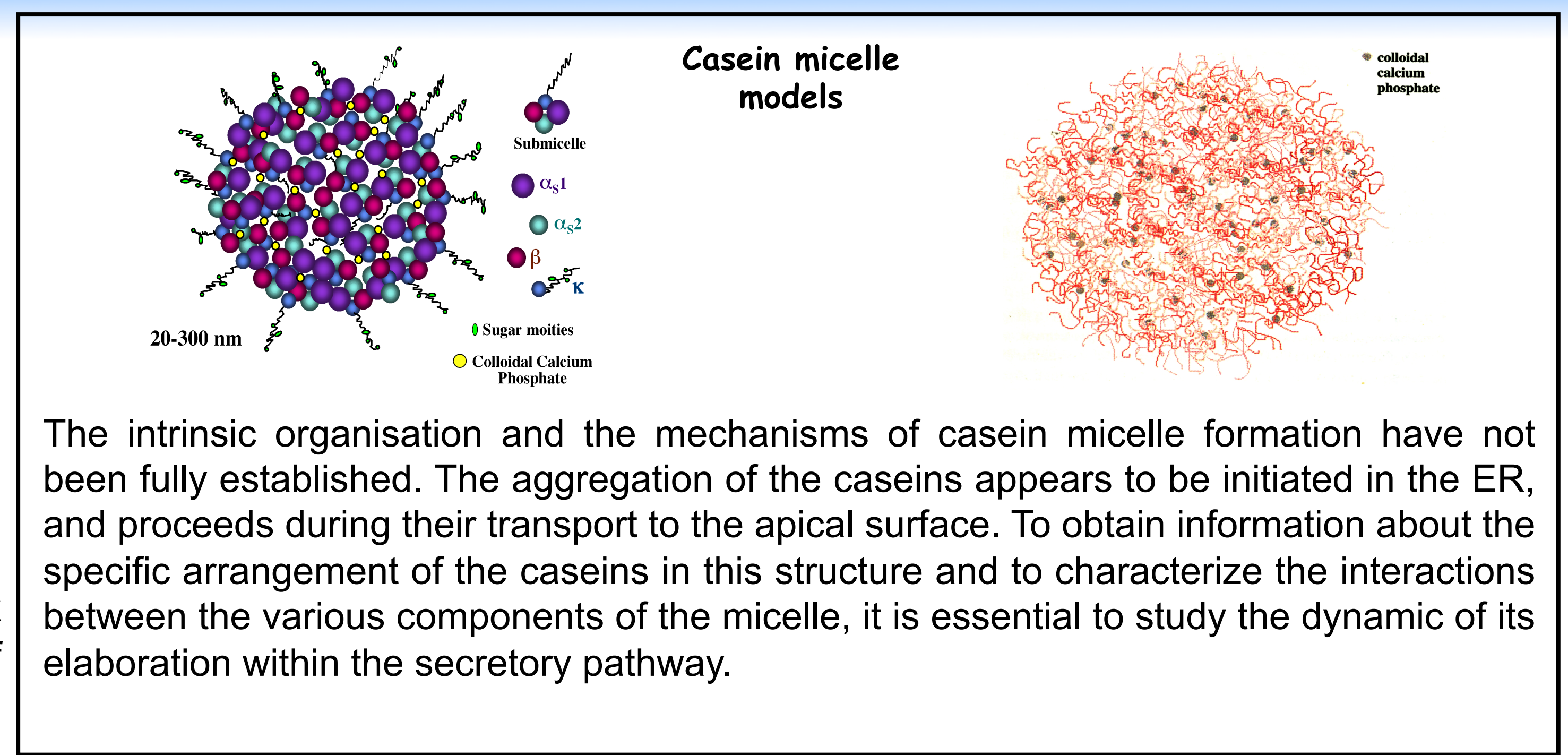
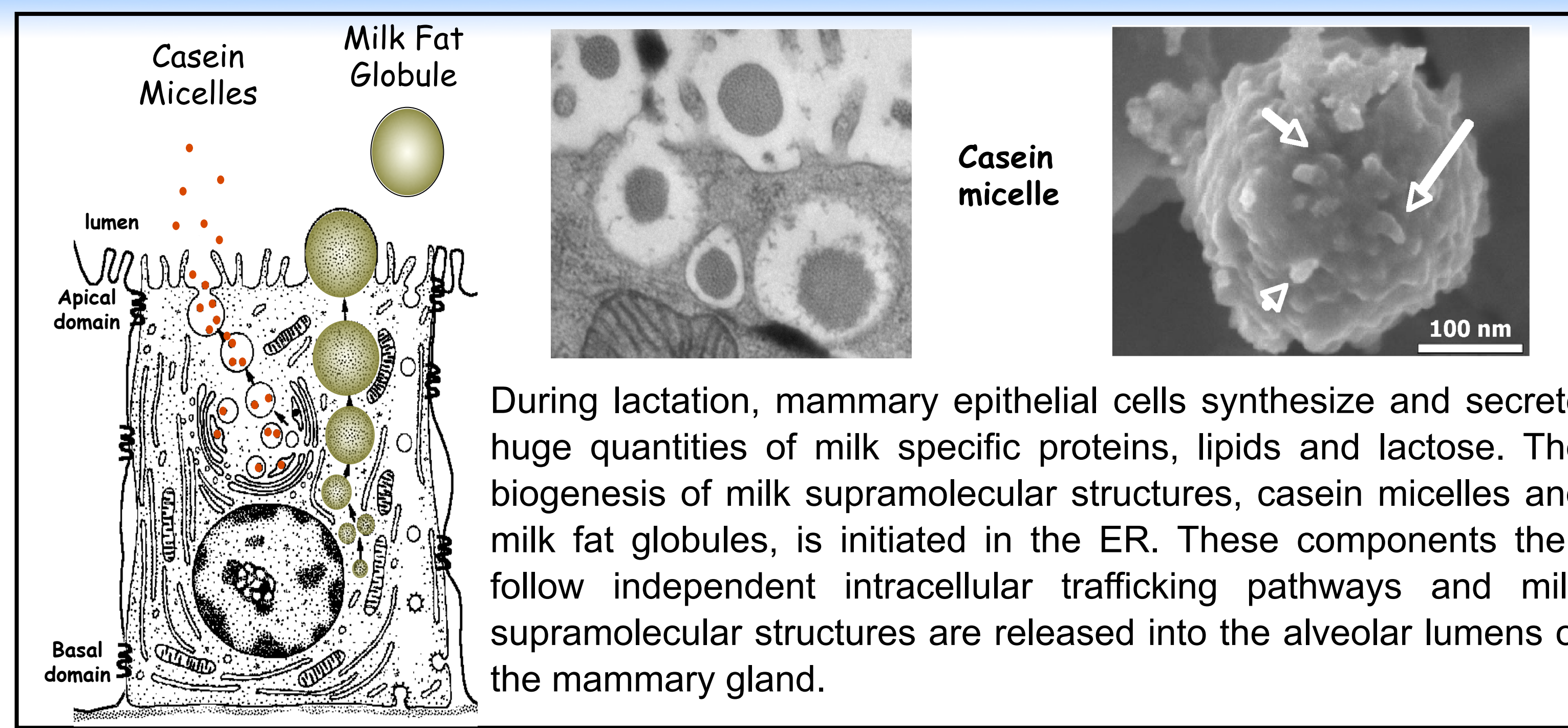
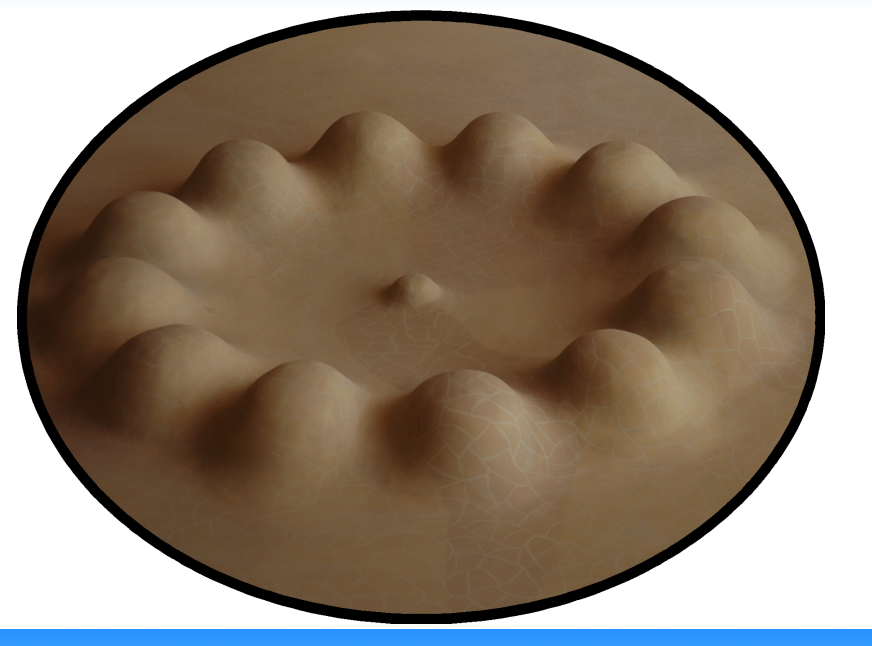
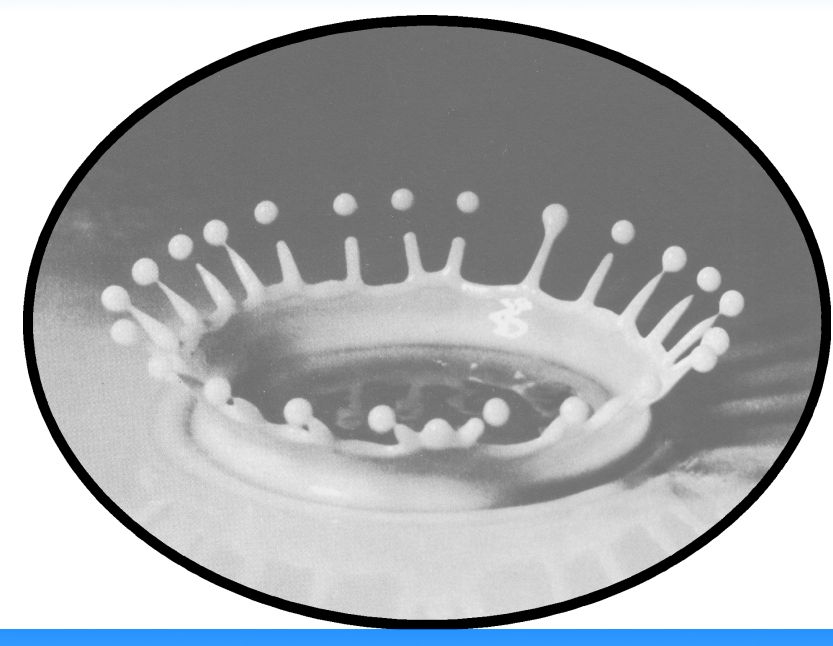
L'archive ouverte pluridisciplinaire **HAL**, est destinée au dépôt et à la diffusion de documents scientifiques de niveau recherche, publiés ou non, émanant des établissements d'enseignement et de recherche français ou étrangers, des laboratoires publics ou privés.

Formation of casein micelle in mammary epithelial cell

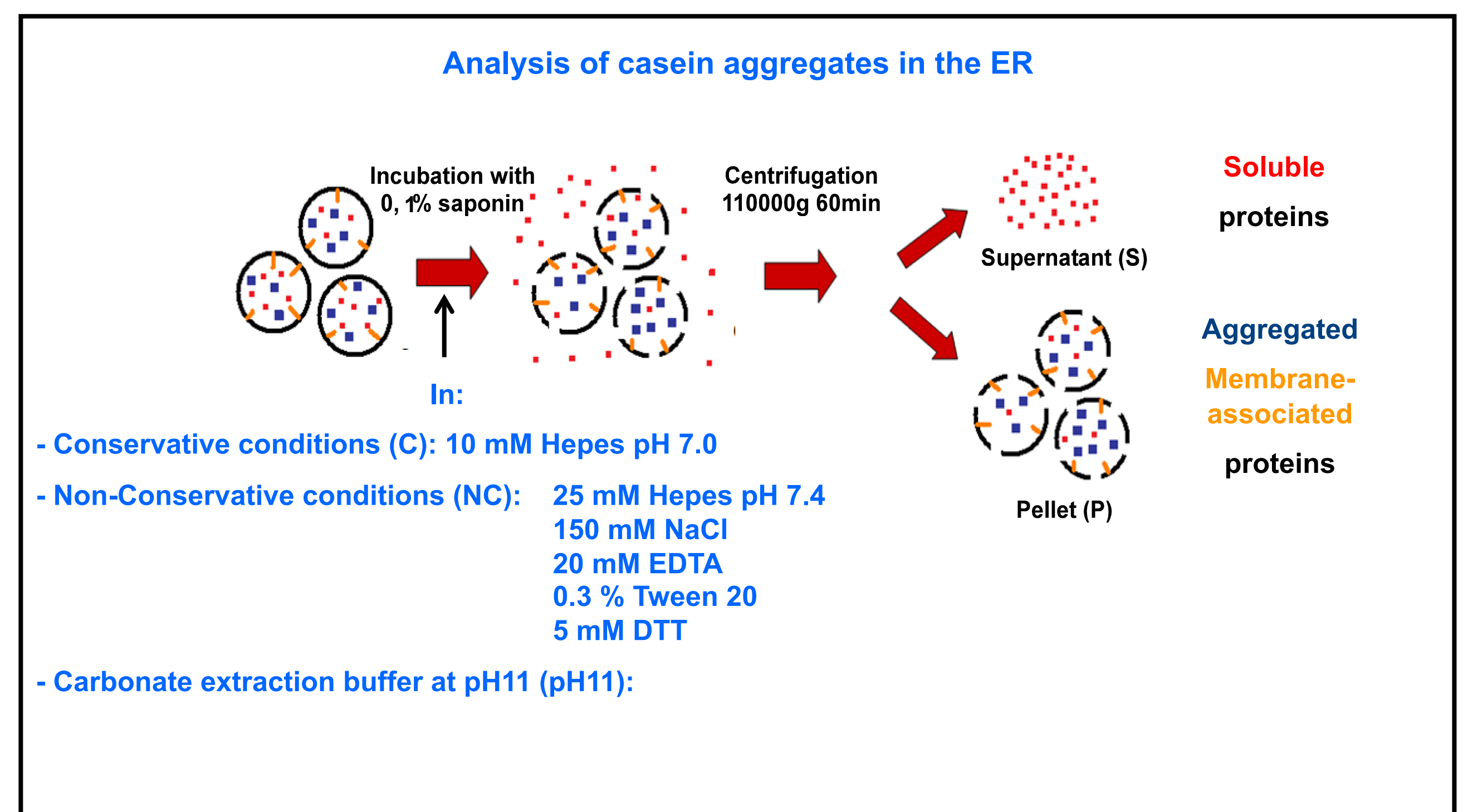
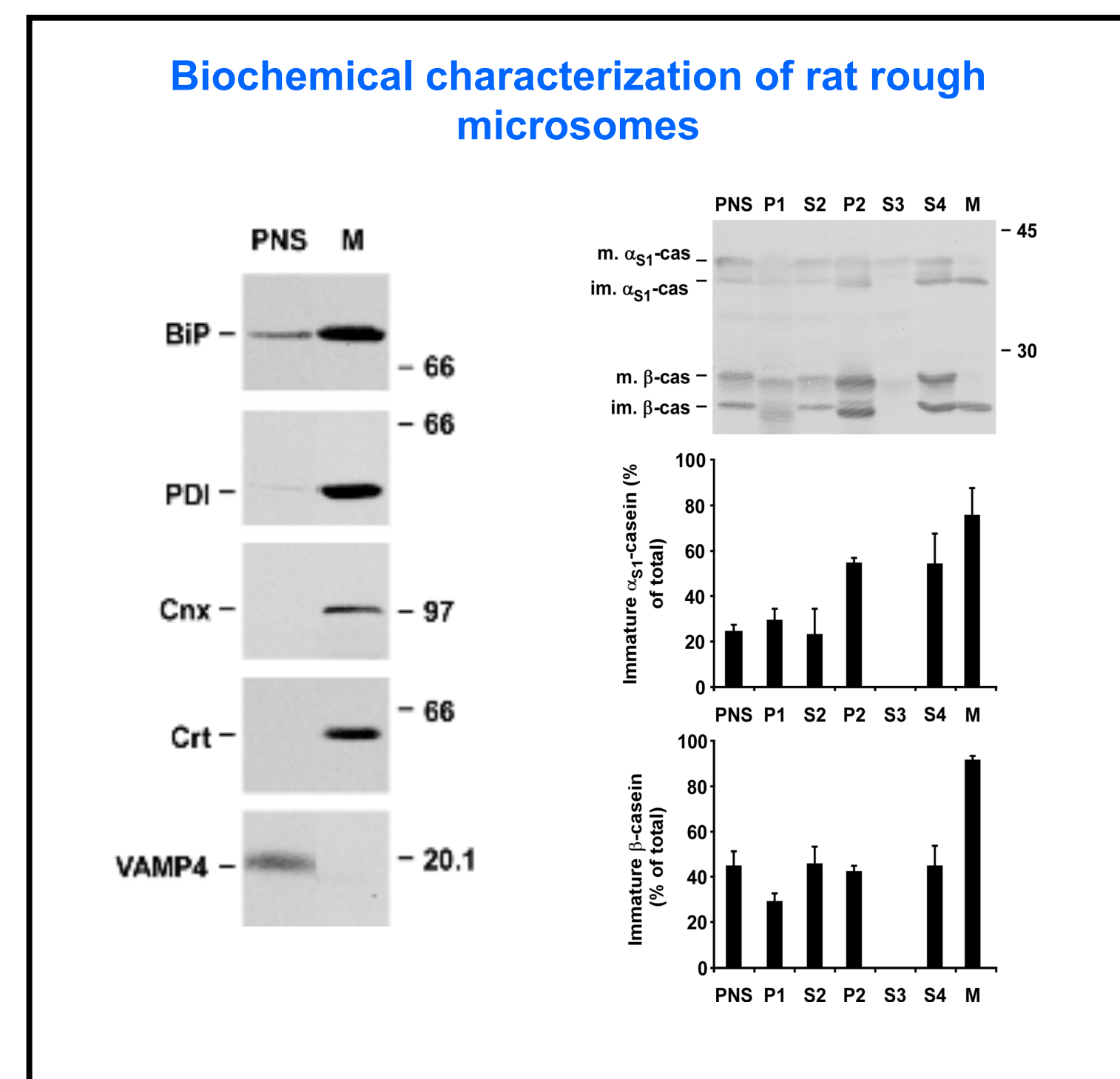
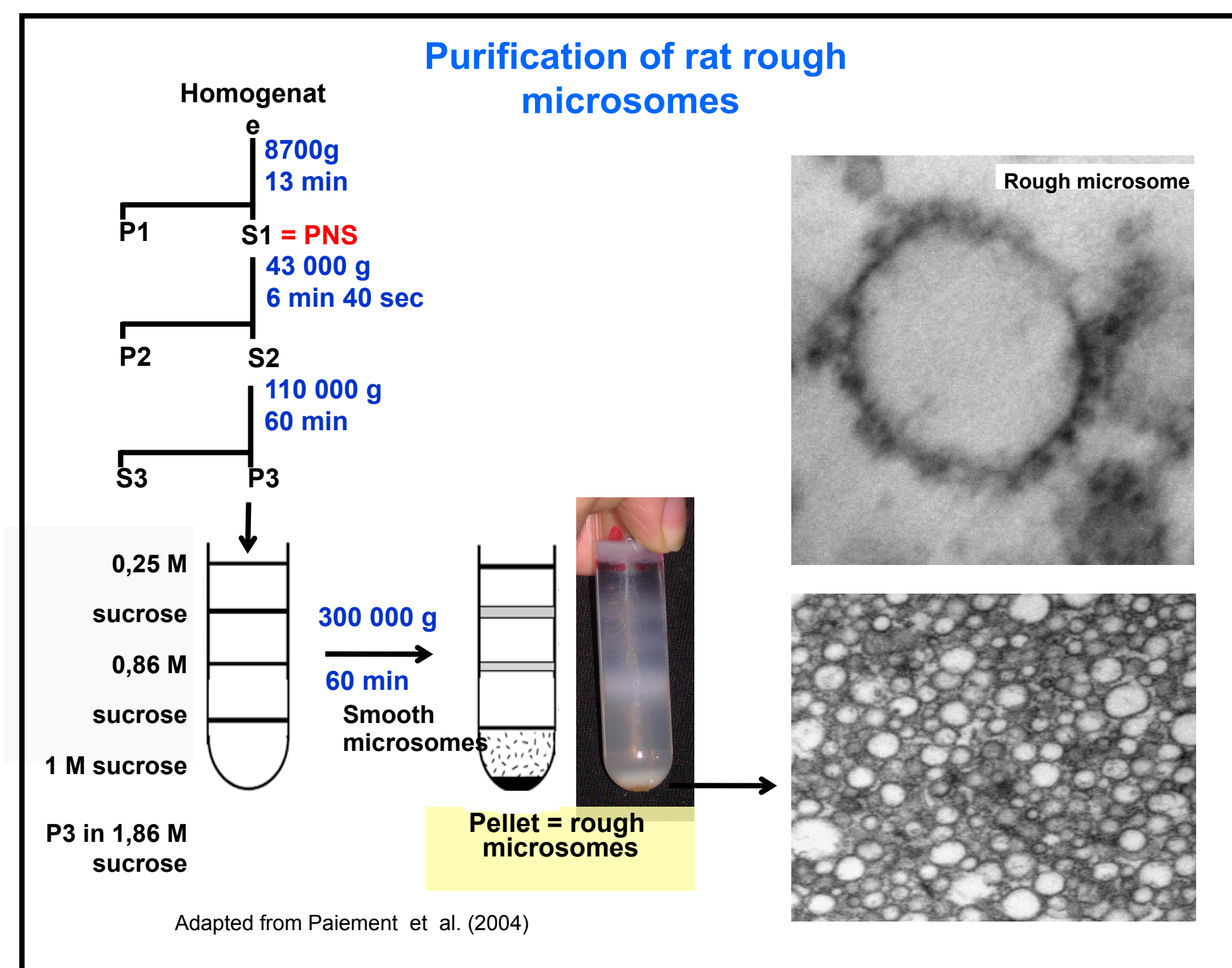
Annabelle Le Parc¹, Joëlle Léonil² and Eric Chantat¹

¹INRA, UR 1196, Génomique et Physiologie de la Lactation, F-78352 Jouy-en-Josas, France.

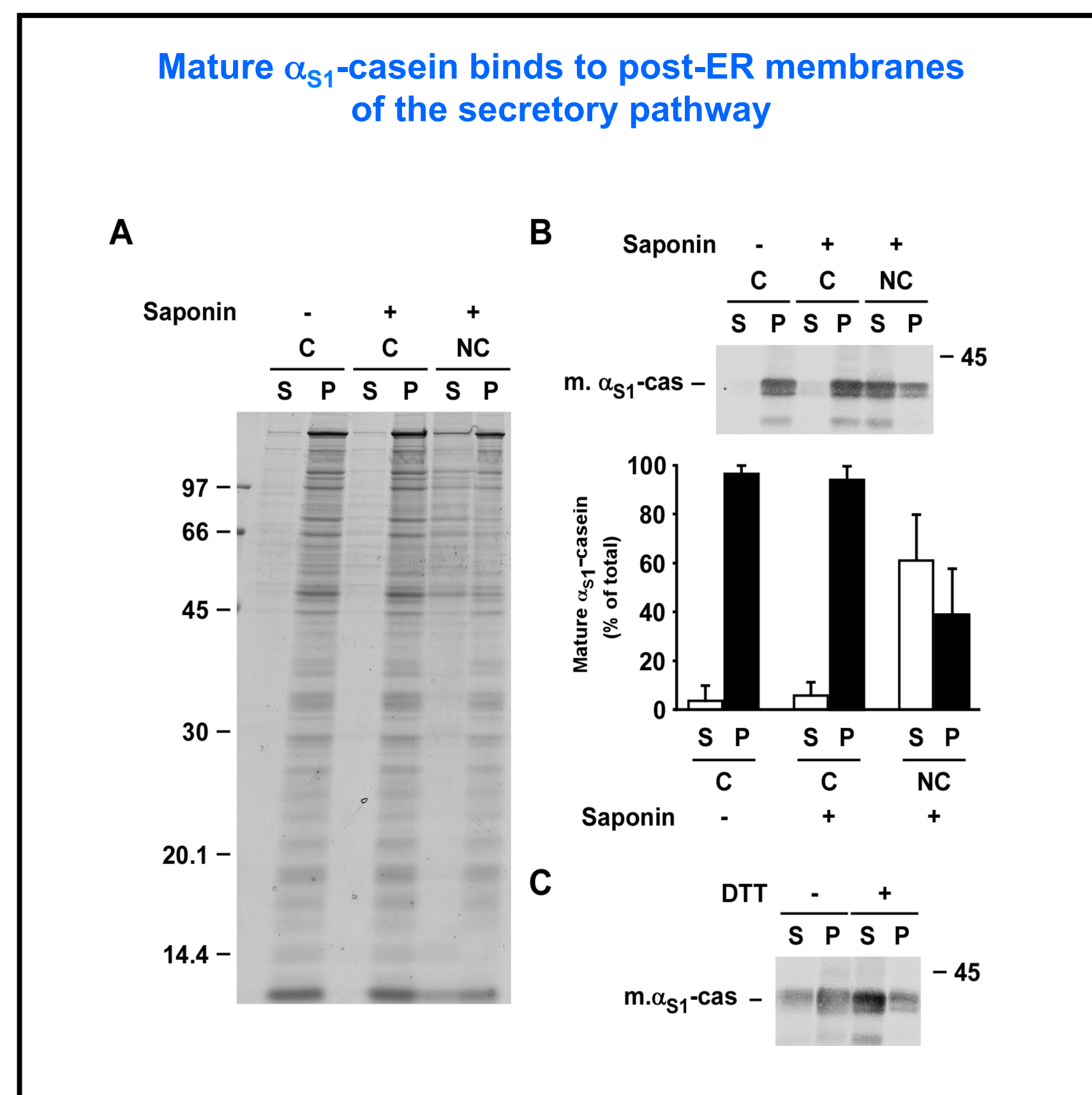
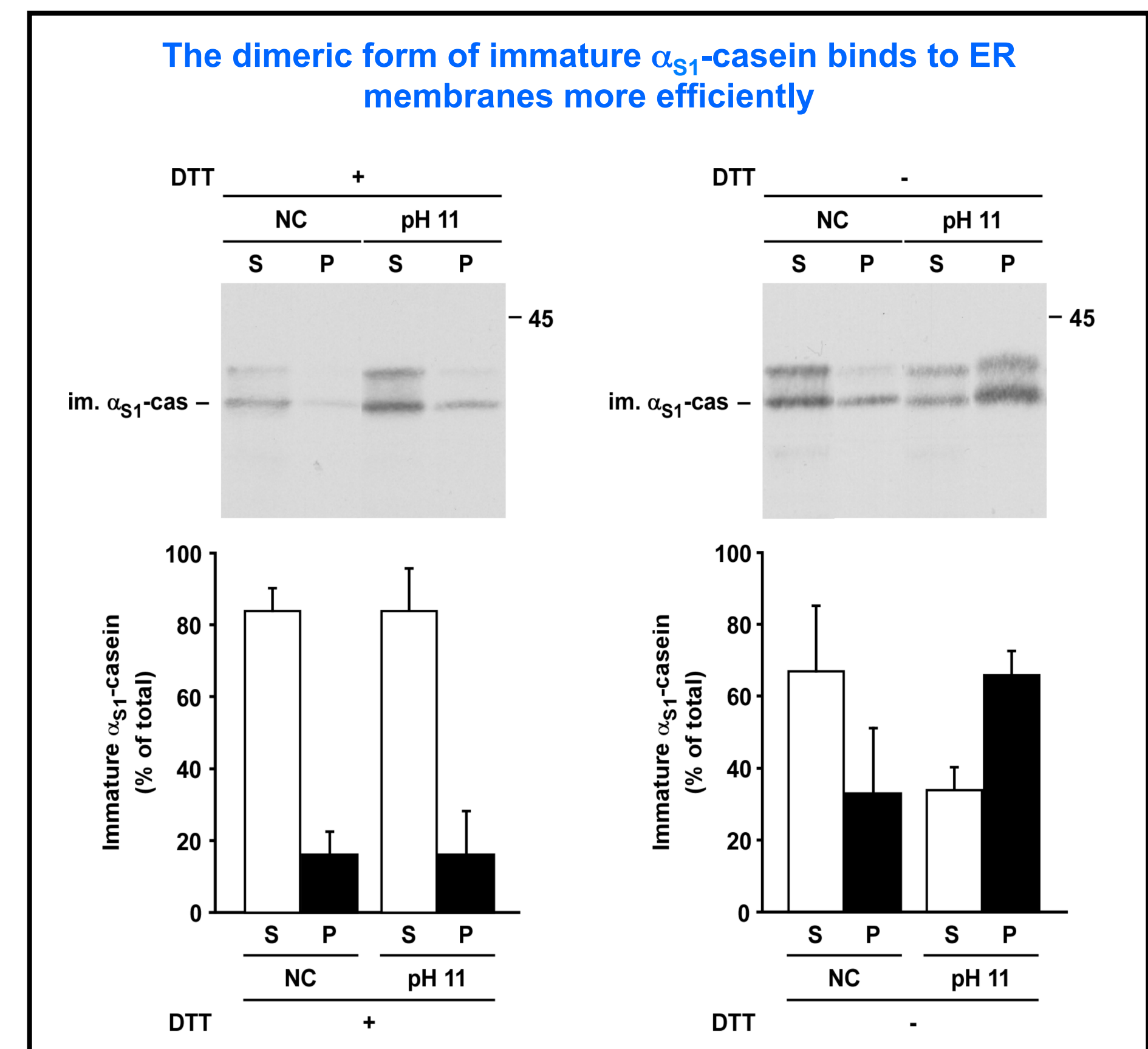
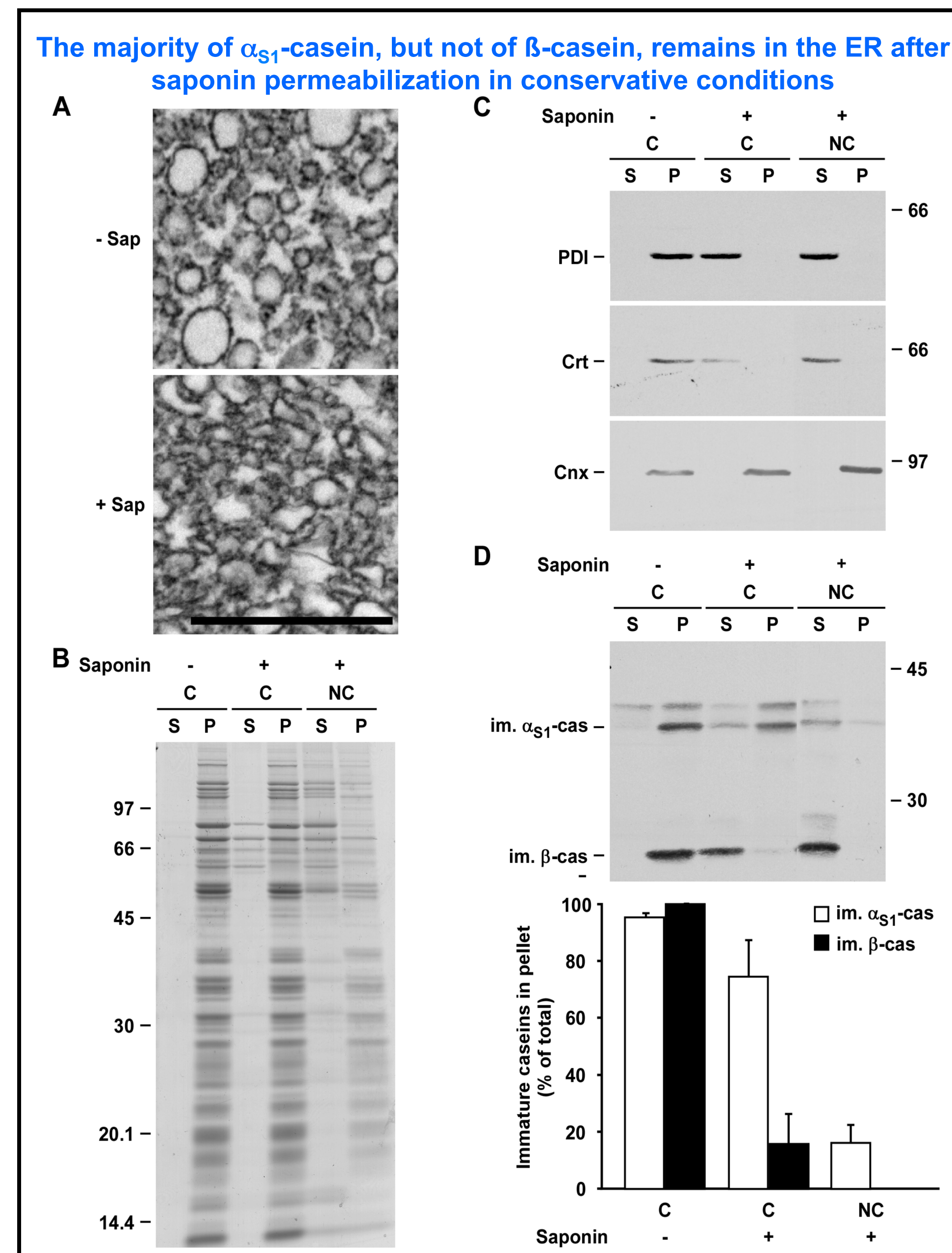
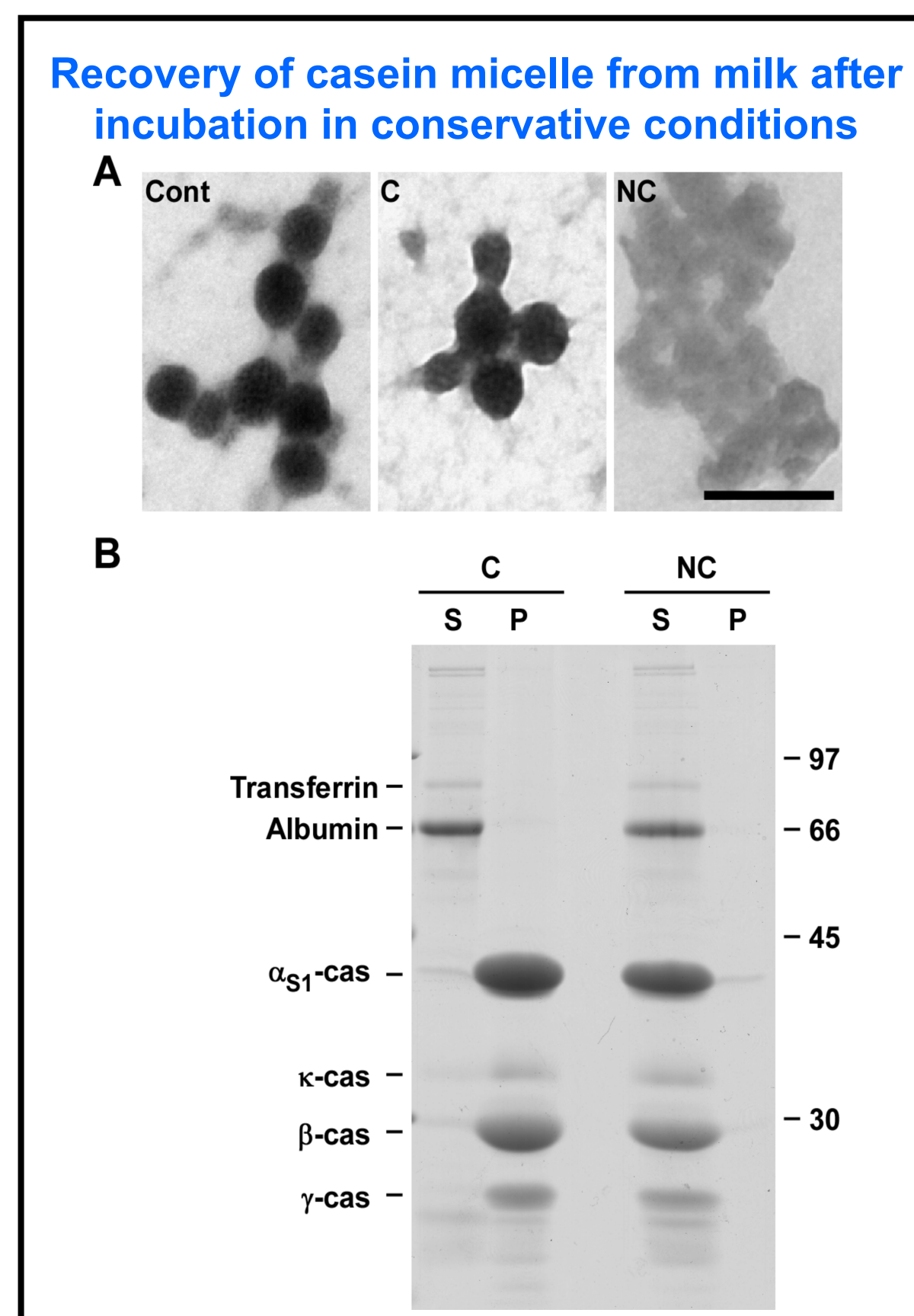
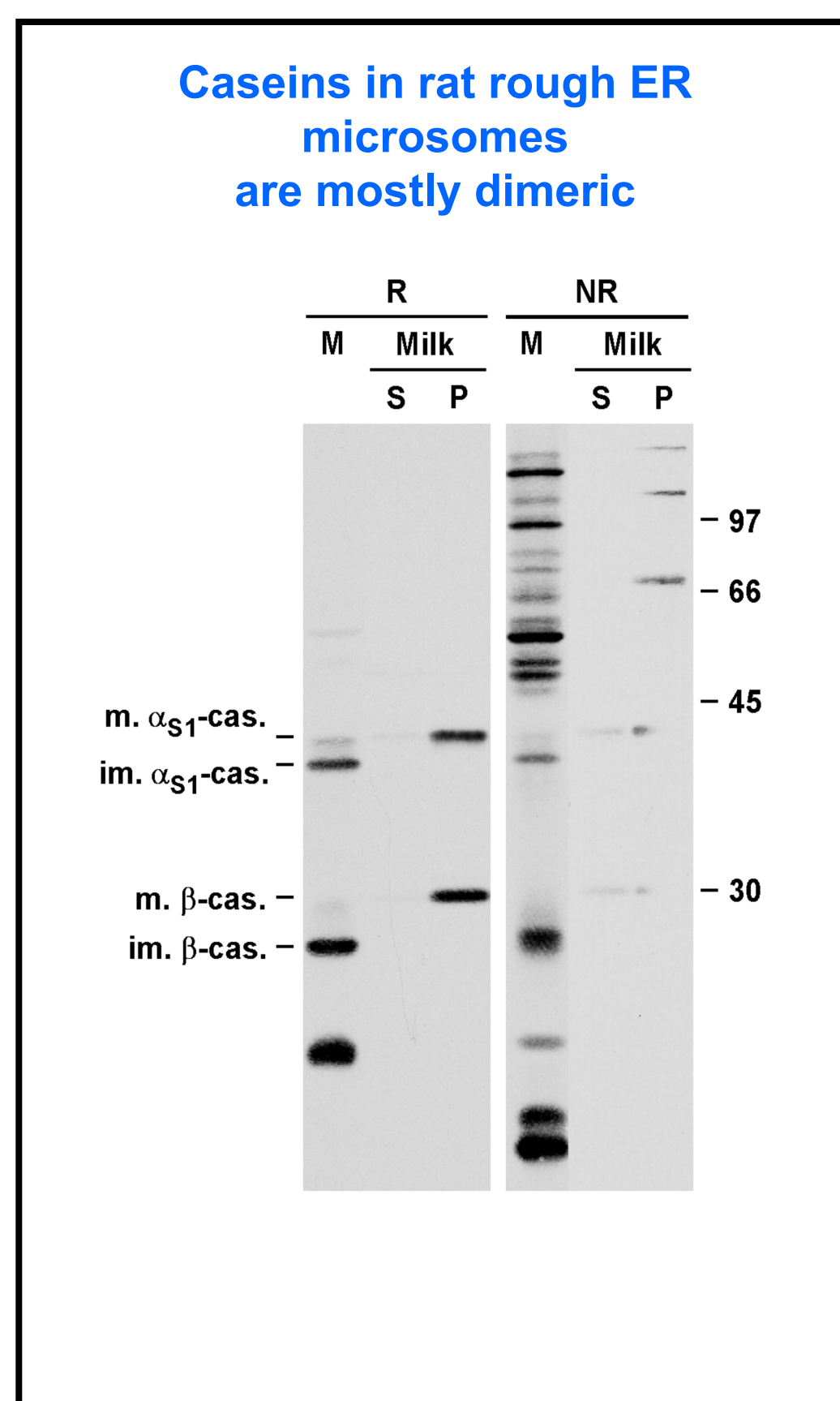
²INRA, UMR 1253, Science et Technologie du Lait et de l'œuf, F-35042 Rennes, France.



Materials and Methods

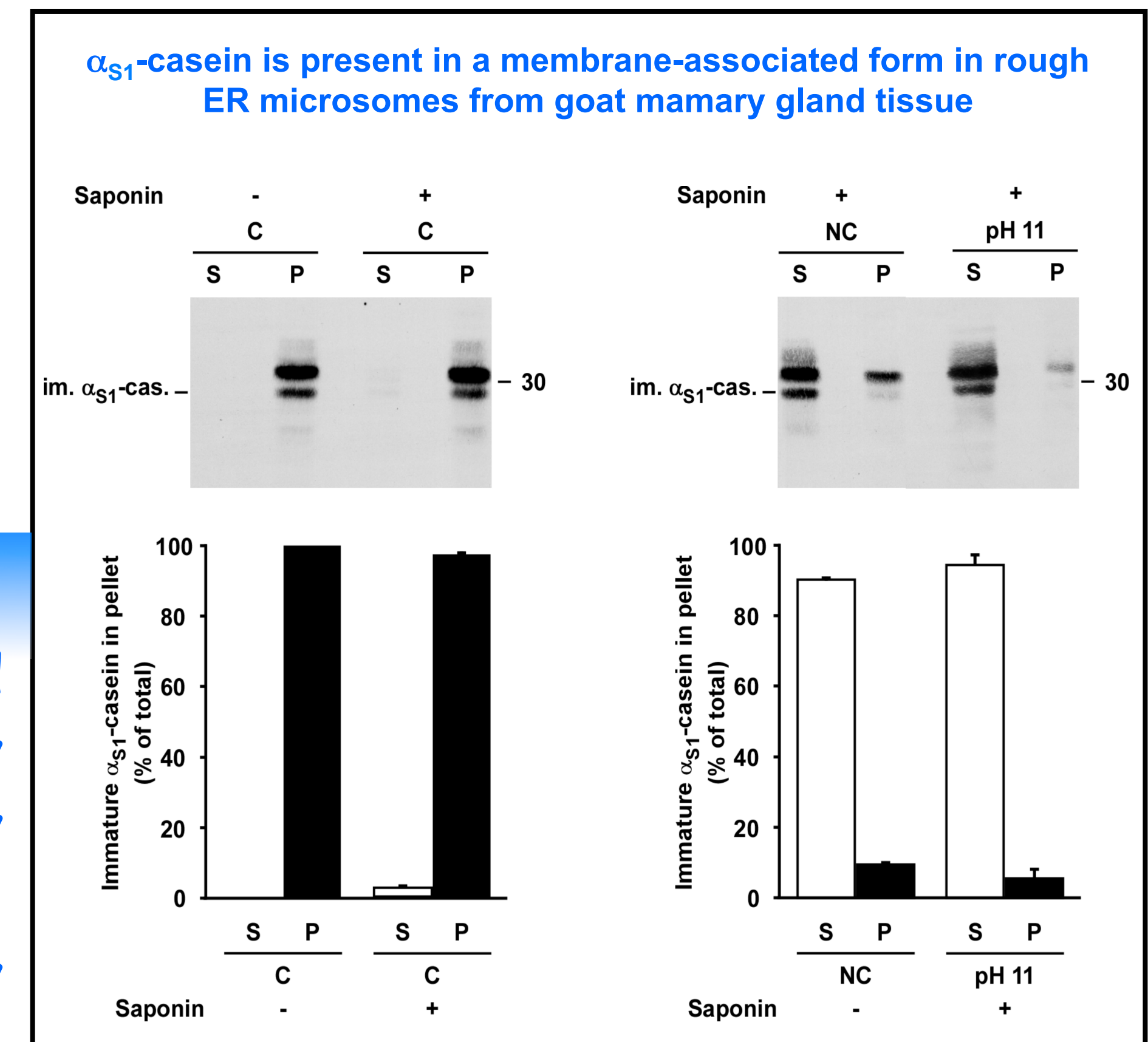


Results



Conclusions

- A substantial fraction of the immature and mature form of αs1-casein is present in a tightly membrane-associated form in the secretory pathway of mammary epithelial cells
- Dimeric αs1-casein has a much higher affinity for membranes



Interaction of αs1-casein with membranes of the secretory pathway might play a key role in casein micelle formation and/or exocytic trafficking in mammary epithelial cell