



HAL
open science

Staphylococcus aureus seroproteomes discriminate ruminant isolates causing mild or severe mastitis

Caroline Le Maréchal, Julien Jardin, Gwénaél Jan, Sergine Even, Coralie Pulido, Jean-Michel Guibert, David Hernandez, Patrice François, Jacques Schrenzel, Dieter Demon, et al.

► To cite this version:

Caroline Le Maréchal, Julien Jardin, Gwénaél Jan, Sergine Even, Coralie Pulido, et al.. Staphylococcus aureus seroproteomes discriminate ruminant isolates causing mild or severe mastitis. *Veterinary Research*, 2011, 42 (35), pp.1-20. <10.1186/1297-9716-42-35>. <hal-01454159>

HAL Id: hal-01454159

<https://hal.science/hal-01454159v1>

Submitted on 29 May 2020

HAL is a multi-disciplinary open access archive for the deposit and dissemination of scientific research documents, whether they are published or not. The documents may come from teaching and research institutions in France or abroad, or from public or private research centers.

L'archive ouverte pluridisciplinaire **HAL**, est destinée au dépôt et à la diffusion de documents scientifiques de niveau recherche, publiés ou non, émanant des établissements d'enseignement et de recherche français ou étrangers, des laboratoires publics ou privés.



Distributed under a Creative Commons CC BY 4.0 - Attribution - International License

RESEARCH

Open Access

Staphylococcus aureus seroproteomes discriminate ruminant isolates causing mild or severe mastitis

Caroline Le Maréchal^{1,2,3}, Julien Jardin^{1,2}, Gwenaél Jan^{1,2}, Sergine Even^{1,2}, Coralie Pulido³, Jean-Michel Guibert³, David Hernandez⁴, Patrice François⁴, Jacques Schrenzel⁴, Dieter Demon⁵, Evelyne Meyer⁵, Nadia Berkova^{1,2}, Richard Thiéry³, Eric Vautor^{3,6†}, Yves Le Loir^{1,2*†}

Abstract

Staphylococcus aureus is a major cause of mastitis in ruminants. In ewe mastitis, symptoms range from subclinical to gangrenous mastitis. *S. aureus* factors or host-factors contributing to the different outcomes are not completely elucidated. In this study, experimental mastitis was induced on primiparous ewes using two *S. aureus* strains, isolated from gangrenous (strain O11) or subclinical (strain O46) mastitis. Strains induced drastically distinct clinical symptoms when tested in ewe and mice experimental mastitis. Notably, they reproduced mild (O46) or severe (O11) mastitis in ewes. Ewe sera were used to identify staphylococcal immunoreactive proteins commonly or differentially produced during infections of variable severity and to define core and accessory seroproteomes. Such SERological Proteome Analysis (SERPA) allowed the identification of 89 immunoreactive proteins, of which only 52 (58.4%) were previously identified as immunogenic proteins in other staphylococcal infections. Among the 89 proteins identified, 74 appear to constitute the core seroproteome. Among the 15 remaining proteins defining the accessory seroproteome, 12 were specific for strain O11, 3 were specific for O46. Distribution of one protein specific for each mastitis severity was investigated in ten other strains isolated from subclinical or clinical mastitis. We report here for the first time the identification of staphylococcal immunogenic proteins common or specific to *S. aureus* strains responsible for mild or severe mastitis. These findings open avenues in *S. aureus* mastitis studies as some of these proteins, expressed *in vivo*, are likely to account for the success of *S. aureus* as a pathogen of the ruminant mammary gland.

Introduction

Mastitis is the first cause of economical loss in milk production worldwide [1] and is a major concern in milk transformation [2]. The problem is however currently hard to tackle for mastitis in dairy cows, sheep and goats. Especially, *S. aureus* mastitis is typically refractory to antibiotic treatment. Prophylactic measures, including the development of an effective vaccine, have so far proven unsuccessful for the control of the disease. *S. aureus* is well-known to produce a large variety of virulence factors (including numerous proteins like toxins or adhesins). Consequently, it induces a large panel of infections, and the clinical acuteness of each infection type may also be variable. For example,

S. aureus mastitis in dairy sheep ranges from subclinical mastitis to lethal gangrenous mastitis. Such variability relies on staphylococcal virulence factors as well as host factors. Until now, no study has been performed to identify the transcripts and proteins commonly or specifically produced *in vivo* by *S. aureus* strains during mastitis. To obtain such information using direct transcriptomic or proteomic approaches upon *S. aureus* samples collected within the infection site stumbles on technical bottlenecks such as the low amounts of *S. aureus* cells and the difficulty to localize the infection site within the udder.

Serological proteome analysis (SERPA) is a promising technique that can be used to shed light on the host's immune response to staphylococcal infection. This technique was used to mine new antigen candidates for vaccine development in human infections [3]. SERPA has also been used to identify proteins produced *in vivo*,

* Correspondence: Yves.LeLoir@rennes.inra.fr

† Contributed equally

¹INRA, UMR1253 Science et Technologie du Lait et de l'Œuf, F-35042 Rennes, France

Full list of author information is available at the end of the article

during infection [4]. In combination with whole genome shotgun sequencing, SERPA is a powerful tool to identify immunoreactive proteins produced by *S. aureus* during the infection [5].

Genotyping studies indicated that *S. aureus* strains isolated from dairy sheep farms in the south east of France were clonally related and are predominantly represented by a single pulse-field gel electrophoresis (PFGE) type OV/OV' [6,7]. Such close phylogenetic relationship was recently confirmed at the global scale using Multi Locus Sequence Typing and comparative genome hybridization [8,9]. Among strains in this OV/OV' PFGE profile, one was isolated from subclinical mastitis (O46) and another one from gangrenous mastitis (O11). Few genetic differences were identified [10] and their role in the development of mastitis with such different severity has not yet been determined. Moreover identification of the proteins produced by *S. aureus* in mastitis with different severity is an important step to better understand the host-pathogen interactions and to provide targets for the development of efficient prevention or treatment strategies against mastitis. Therefore, we applied SERPA to identify proteins that are produced by both *S. aureus* strains O11 and O46 (core seroproteome) and the ones specifically produced by each strain ("accessory" seroproteome).

Materials and methods

Bacterial strains, growth conditions and preparation of protein samples

S. aureus strains used in this study are presented in Table 1. *S. aureus* O46 was isolated from a case of ovine subclinical mastitis and O11 from a gangrenous lethal mastitis [10]. Genetic and genotypic background of *S. aureus* O46 and O11 are well-documented. They share the same pulsed type (OV/OV') and are representative of the major

lineage found associated to ewe mastitis in south east of France [6,7]. Growth conditions and preparation of protein extracts were as described in Le Maréchal et al. 2009 [11]. Briefly, overnight cultures in BHI were diluted 1:1000 in fresh RPMI 1640 medium (Sigma, Saint Quentin Fallavier, France). RPMI was extemporaneously depleted of iron (and hereafter referred to as iron-depleted RPMI) by adding deferoxamine (0.15 mM) (Sigma). Growth conditions in which there is restriction in the bioavailability of iron can indeed lead to an increase of the expression of virulence factors which are normally expressed in vivo [12]. *S. aureus* strains were grown in 500 mL flasks under agitation (150 rpm) at 37 °C (a flask-to-broth volumetric ratio of 5), for aerobic conditions, or in falcon tubes (50 mL) completely filled with medium and incubated at 37 °C without agitation for anaerobic conditions. Protein samples for supernatant, cell wall or total fraction were prepared exactly as previously described [11].

Genome sequencing of O11 and O46 strains

To facilitate the analysis of SERPA results, the genome of the two strains used in experimental infection was fully sequenced using the Solexa technology (P Mayer, L Fari-nelli, and E Kawashima, 1997. Patent application WO98/44151) according to the manufacturer's protocol (Illumina, San Diego, CA, USA). Briefly, genomic DNA was physically fragmented by nebulization into 50- to 500-bp fragments. After end repair and ligation of the bar-coded paired-end adaptors, the products were purified on agarose gel to recover products with inserts of ~200 bp. Quality control was performed by cloning an aliquot of the library into a TOPO plasmid and capillary sequencing eight clones per library. The samples were then used to generate DNA colonies using one channel of a paired-end flow cell at dilutions of 4 pM. The flow cell was then submitted to 2 × 74 cycles of sequencing on the genome analyzer. Base calling was performed using the GAPipeline 1.4.0 software; a total of 27.6 million reads (pass filter) were obtained. After bar code selection, 13.9 and 11.8 million reads of 71 bases in length were obtained for the strains O11 and O46 respectively. The pool of sequences obtained was analyzed and assembled using the Edena assembler [13], which resulted in a set of 87 and 96 contigs for O11 and O46, respectively. The gene content of each strain (2787 and 2822 Coding Sequences -CDSs- for O11 and O46, respectively) was thus established and used in protein identification after SERPA. Detailed genome analysis of these strains is described elsewhere (Le Maréchal et al., submitted).

2-Dimensional Electrophoresis (2-DE)

Samples (200 µg of proteins for Coomassie blue staining and 50 µg for Western blotting) were precipitated with 2D

Table 1 *Staphylococcus aureus* strains used in this study

Strain	Type of mastitis	Origin	Isolated in:
O11*	gangrenous	south east France	2002
1628	gangrenous	south east France	2010
1624	clinical	south east France	2003
1625	clinical	south east France	2008
1626	clinical	south east France	2008
1536	clinical	south west France	1998
O46*	subclinical	south east France	2002
1627	subclinical	south east France	2008
O55	subclinical	south east France	2003
O117	subclinical	Corsica, France	2001
1535	subclinical	south west France	1998
O82	subclinical	south east France	2003

*: O11 and O46 were used for experimental infections and their genome was fully sequenced (see Materials and Methods).

clean up kit (GE Healthcare, Orsay, France) according to the manufacturer's instructions. Pellets were solubilised in sample solution containing 7 M urea, 2 M thio-urea, 25 mM dithiothreitol (DTT), 4% (w/v) 3-[(3-Cholamidopropyl)dimethylammonio]-1-propane-sulfonate (CHAPS) and 2% (w/v) ampholyte containing buffer (IPG-Buffer 4-7 or 3-10 NL, GE Healthcare). Isoelectric focusing was carried out using pH 4 to 7 (Cell wall and total proteins) or 3 to 10 NL (exoproteins) 13 cm Immobiline Dry Strips on a Multiphor II electrophoresis system (Amersham Biosciences; GE Healthcare, Orsay, France) for a total of 60 kVh using a standard procedure described previously [14]. The second dimensional separation was performed on the Ettan™ DALTtwelve electrophoresis system (GE Healthcare) using 14% acrylamide separating gels without a stacking gel at a voltage of 50 V for 1 h and 180 V for about 7 h. Kaleidoscope Prestained Standards (Biorad) were used as standard. Gels were transferred onto membrane or stained with R250 Coomassie blue (Serva, Heidelberg, Germany) or MS-compatible silver nitrate (Sigma) [15].

Intramammary challenge with *S. aureus* in ewes

Experimental mastitis was performed according to the Regional Committee for Animal Use and Care (Côte d'Azur, France) and is recorded under reference NCA/2008-14/12-09. Healthy lactating primiparous ewes of Lacaune breeds were selected based on the absence of intramammary infections and milk somatic cell counts below 100 000 cells/mL. Repeated full bacteriological analysis of milk from the two quarters that were going to be infected showed that the ewes were negative for *Staphylococcus* sp. and *Mycoplasma* sp. Absence of nasal carriage for staphylococci was also checked after enrichment and culturing of swab samples of the nares of ewes on selective media, as described previously [6]. At D0, 12 ewes were divided into 2 groups and urethral catheters (Portex® Jackson Cat Catheter, Coveto, France) were inserted into the teat canal after a thorough disinfection of the teat orifice with 70% ethanol. 1 mL PBS containing 20 CFU of *S. aureus* (O11 or O46) was injected through the catheter, which was removed afterwards. Six ewes were thus infected by strain O11 (group O11) and six by strain O46 (group O46). Severity of the mastitis induced in ewes was estimated according to criteria presented in Additional file 1, Table S1. Mastitis was classified as subclinical, clinical, pyogenic and gangrenous. Classification was based on clinical symptoms, presence of *S. aureus* cells and Somatic Cell Count (SCC) in milk.

Sample processing

Sera from ewes were prepared from blood samples collected aseptically from the jugular vein of the animals at

D0, D7, D14, D21 and D28 post inoculation (pi). Briefly, blood samples were kept for 2 h at room temperature before centrifugation. Sera were then stored at -20°C. Milk samples were taken 24 and 36 h pi for bacteriological examination and determination of SCC. Milk was 1/10 diluted and 100 µL of this dilution was plated on selective Rabbit Plasma Fibrinogen Baird-Parker medium to confirm *S. aureus* presence in the mammary gland. SCC was measured with the Fossomatic method [16] to follow the onset of the infection.

Western blot analysis

Total cell lysates were prepared as previously described [11]. Total protein extracts of *S. aureus* strains O11 and O46 were separated by SDS-PAGE on 12% acrylamide separating slab gels (70 × 100 × 0.5 mm), with a 4% acrylamide stacking gel on a mini-protean III gel system (BioRad, Ivry sur Seine, France) according to Laemmli [17]. Protein migration was performed for 2 h at room temperature at constant 80 V voltage. Samples were diluted in sample buffer and denatured at 100 °C for 3 min. Gels were transferred onto a PVDF membrane (GE Healthcare) at constant 250 mA amperage in Towbin transfer buffer [18] using a Trans-Blot cell (Biorad) for 1.25 h. Membranes were washed three times with Tris Buffered Saline (TBS) at pH 7.5 and saturated in blocking solution (3% non-fat dry milk in TBS with 0.3% Tween 20 (TBS-T)) at 4 °C overnight. After saturation in blocking solution, membranes were washed 3 × 10 min with TBS-T and exposed to the different ewe sera used as primary antibody for 4 h at room temperature. After washing, membranes were incubated with alkaline phosphatase conjugated anti-sheep IgG (Sigma) diluted 1:15,000 in 25 mL blocking solution for 1 h and finally BCIP/NBT (Sigma) was used to visualize immunoreactive proteins, according to the manufacturer's instructions.

Selection of the hyper-immune sera

Sera samples were analysed by western blotting as described above. Sera sampled on D0, D7, D14, D21 and D28 pi were compared using the mini-protean II Multi-screen apparatus (Biorad) (600 µL of serum diluted 1:10,000 in blocking solution). Immunostained Western blots were scanned using an Image Scanner II (Amersham biosciences) and further analyzed using Image-Quant 1D software. The number, volume and area of bands were taken into account for the analysis. Optimal dilution for the selected sera was determined as described above. Sera and dilutions yielding the best ratio signal/background were selected.

Identification of immunoreactive proteins

Bacterial proteins separated by 2-DE were transferred onto a PVDF membrane (GE Healthcare) as described

above. Series of four gels were migrated and treated in parallel. Three gels were used for immunoblotting, and the fourth one was Coomassie blue-stained for spot matching and further identification. After saturation in blocking solution the membranes were treated with selected sera in blocking solution during 4 h. Then, the membranes were washed with TBS-T and incubated with alkaline phosphatase conjugated anti-sheep IgG (Sigma) diluted 1:15 000 in 25 mL blocking solution for 1 h. Finally BCIP/NBT (Sigma) was used to visualize immunoreactive proteins, according to the manufacturer's instructions. Membranes were scanned using an Image Scanner II (Amersham biosciences) and further analyzed using Image- Master 2D software. Immunoblot profiles for 2-DE-separated proteins were reproducible in at least two individual experiments. Images of the 2D electrophoresis gels and the BCIP-NBT treated membranes were compared to detect immunoreactive proteins. Spots that were absent or had a significantly different intensity in one strain were considered as proteins that differed between O11 and O46. Spots corresponding to proteins of interest were excised and identified using Nano-Liquid Chromatography (Nano-LC) MS/MS analysis.

Nano-LC MS/MS analysis

Proteins were identified by tandem mass spectrometry (MS/MS) after an in-gel trypsin digestion adapted from Shevchenko [19]. Briefly, gel pieces were excised from the gel, washed with acetonitrile and ammonium bicarbonate solution, and then dried under vacuum in a SpeedVac concentrator (SVC100H-200; Savant, Thermo Fisher Scientific, Waltham, MA, USA). In-gel trypsin digestion was performed overnight at 37 °C and stopped with spectrophotometric-grade trifluoroacetic acid (TFA) (Sigma-Aldrich). The supernatants containing peptides were then vacuum dried in a Speed-Vac concentrator and stored at -20 °C until mass spectrometry analysis. Nano-LC experiments were performed using an on-line liquid chromatography tandem mass spectrometry (MS/MS) setup using a Dionex U3000-RSLC nano-LC system fitted to a QSTAR XL (MDS SCIEX, Ontario, Canada) equipped with a nano-electrospray ion source (ESI) (Proxeon Biosystems A/S, Odense, Denmark). Samples were first concentrated on a PepMap 100 reverse-phase column (C18, 5 µm, 300-µm inner diameter (i.d.) by 5 mm length) (Dionex, Amsterdam, The Netherlands). Peptides were separated on a reverse-phase PepMap column (C18, 3 µm, 75 µm i.d. by 150 mm length) (Dionex) at 35 °C, using solvent A (2% (vol/vol) acetonitrile, 0.08% (vol/vol) formic acid, and 0.01% (vol/vol) TFA in deionized water) and solvent B (95% (vol/vol) acetonitrile, 0.08% (vol/vol) formic acid, and 0.01% (vol/vol) TFA in deionized water). A linear

gradient from 10 to 50% of solvent B in 40 min was applied for the elution at a flow rate of 0.3 µL/min. Eluted peptides were directly electrosprayed into the mass spectrometer operated in positive mode. A full continuous MS scan was carried out followed by three data-dependent MS/MS scans. Spectra were collected in the selected mass range 400 to 2 000 *m/z* for MS and 60 to 2 000 *m/z* for MS/MS spectra. The three most intense ions from the MS scan were selected individually for collision-induced dissociation (1+ to 4+ charged ions were considered for the MS/MS analysis). The mass spectrometer was operated in data-dependent mode automatically switching between MS and MS/MS acquisition using Analyst QS 1.1 software. The instrument was calibrated by multipoint calibration using fragment ions that resulted from the collision-induced decomposition of a peptide from β-casein, β-CN (193-209). The proteins present in the samples were identified from MS and MS/MS data by using MASCOT v.2.2 software for search into two concatenated databases: (i) a homemade database containing all the predicted proteins of the *S. aureus* strains O11 and O46 used in this study and (ii) a portion of the UniProtKB database corresponding to the *S. aureus* taxonomic group [20]. Search parameters were set as follows. A trypsin enzyme cleavage was used, the peptide mass tolerance was set to 0.2 Da for both MS and MS/MS spectra, and two variable modifications (oxidation of methionine and deamidation of asparagine and glutamine residues) were selected. For each protein identified in NanoLC-ESI-MS/MS, a minimum of four peptides with MASCOT score corresponding to a *P* value below 0.05 or an Exponentially Modified Protein Abundance Index [21] greater than 0.4 were necessary for validation with a high degree of confidence. For automatic validation of the peptides from MASCOT search results, the 1.19.2 version of the IRMa software was used [22].

Intramammary infection with *S. aureus* in mice

The animal study was conducted according to current Good Scientific Practice-principles (2000) and approved by the Ethical Committee of the Faculty of Veterinary Medicine, Ghent University (Belgium). Sixteen CD-1 lactating female mice (Harlan Laboratories Inc., Horst, The Netherlands) were used 12-14 days after birth of the offspring. The pups were removed 1 to 2 h before bacterial inoculation of mammary glands and a mixture of ketamine/xylazine was used for anesthesia of the lactating mice. The orifice of both L4 (on the left) and R4 (on the right) abdominal mammary glands was exposed by a small cut at the near end of the teat. 100 µL PBS without (*n* = 2) or with 150 CFU of *S. aureus* strain O11 (*n* = 7) or O46 (*n* = 7) was injected slowly with a 32-gauge blunt needle through the teat canal. Rectal

body temperature of the mice was measured at 0 h and 18 h pi. At 18 h pi mice were anesthetized with ketamine/xylazine to collect blood by cardiac puncture and serum was obtained after clotting at 37 °C and cold centrifugation. After cardiac puncture, mice were euthanized by cervical dislocation and mammary glands were isolated. Glands of six mice of each group were homogenated and bacterial CFU was quantified by plating serial logarithmic dilutions in PBS. Lysates from the homogenates were prepared in 1% NP40-based buffer. Serum and mammary gland lysates were quantified for IL-1 β , IL-6, TNF, KC and MCP-1 using BD™ Cytometric Bead Array technology. Mammary glands (inoculated and PBS control glands) of 4 mice (2 from each group) were embedded and used for further histopathological analysis (Vetopath, Antibes, France).

Statistical analyses

A Fisher test was used with a risk $\alpha = 10\%$ to determine the difference between the ewes infected with *S. aureus* O11 and the ewes infected with strain O46. Differences in rectal body temperature and cytokine levels in the mouse mastitis model were analyzed with the unpaired *T*-test. $P < 0.05$ was considered statistically significant.

Results

Ewes infected with O11 or O46 *S. aureus* strains developed mastitis with different severities

Although O11 and O46 strains share the same genotype and are highly genetically similar [10], they were isolated from dramatically different ewe mastitis episodes. One can thus wonder whether the clinical signs associated with O11 and O46 infection were or not related to strains characteristics or a fortuitous matter of sampling time (mastitis can indeed evolve from subclinical to severe clinical or even gangrenous within a few days). To check this, two groups of ewes were infected either with O11 or O46 *S. aureus* strains, as described in the previous section. Onset of the symptoms was followed up during the course of the experiment. All animals became infected and signs of mastitis were evident in most ewes as soon as 24 h pi. The animals shed the *S. aureus* strains over the sampling period and remained infected for the duration of the experiment. Shedding from the infected glands varied and *S. aureus* load in milk ranged from 10 CFU/mL to 3.16×10^8 CFU/mL, depending on the individual ewe, and on the day pi (not shown). Symptoms evoked by intramammary inoculation varied among ewes. In group O11, five out of six ewes developed a gangrenous mastitis, the last one developed a pyogenic mastitis according the criteria defined in Additional file 1, Table S1. In group O46, symptoms were more heterogeneous and mastitis cases were classified in subclinical mastitis ($n = 1$), pyogenic

mastitis ($n = 2$), mild clinical mastitis ($n = 2$) and gangrenous mastitis ($n = 1$). Subclinical mastitis was determined with the presence of bacteria (250 CFU/mL of milk 36 h pi), a raise in SCC ($> 200\,000$ cells/mL in each milk sample after 24 h) and absence of fever or symptoms. Except for the ewe with subclinical mastitis, bacteria were detected in all milk samples and reached more than 10^6 CFU/mL 36 h pi. All animals had fever (above 40 °C 36 h pi) and SCC increased quickly and was above 10^6 cells/mL at 36 h pi. The proportion of the gangrenous mastitis was significantly higher in the group of ewes infected with O11 strain compared to the group infected with O46 ($p = 0.08$) (Additional file 2, Figure S1).

S. aureus O11 and O46 induce dramatically different clinical features in infected mice. To confirm our observation that *S. aureus* strains O11 or O46 induce different types of mastitis, the mouse mastitis model was employed in the current study. Strains O11 and O46 grew equally well in the infected mouse mammary glands and induced mastitis, as determined by temperature measurement (hypothermia in O11 group and hyperthermia in O46 group, 24 h pi; Additional file 3, Figure S2) and histopathological analysis: polymorphonuclear neutrophils (PMN) infiltration was observed only in infected (either with O11 or O46 strains) mammary gland tissue (not shown). To analyse the role of each strain in the development of mastitis, cytokine profile of the serum and mammary gland tissue lysates of mice infected with O11 strain was compared to those infected with O46 strain. The results of cytokine quantification showed that mice infected with *S. aureus* O46 had significantly higher IL-1 β and TNF levels in the mammary gland lysates and significantly higher systemic (serum) levels of IL-1 β and MCP-1 (Additional files 4 and 5, Figures S3 and S4). Altogether, these results demonstrate that despite their close genetic relationships, *S. aureus* O11 and O46 reproducibly induced mastitis with significantly different clinical signs.

Antibody production in response to infection of ewes with *S. aureus* strains O11 or O46

To compare the relative level of antibodies developed in response to *S. aureus* presence in the mammary gland, serum sampled on D0, D7, D14, D21 and D28 pi were analysed by Western blotting using either O46 or O11 total bacterial extracts as described in the previous section. The number of bacterial proteins recognised by sera and signal intensity increased from D0 to D28 for both O11 and O46 samples (Figure 1). The intensity of the signal revealed with sera collected on D0 was low and much weaker compared to those obtained with sera collected on D21 or D28. Western blots membranes were analysed as described in the previous section. Sera

collected either on D21 or D28 were selected for further analysis. Sera yielding the best signals in each group (one sample for each of the six ewes) were pooled to be used in SERPA experiments. Two pools were thus obtained: sera from ewes infected with O11 and sera from ewes infected by O46, hereafter referred to as group O11 sera and group O46 sera, respectively.

Detection and identification of immunogenic staphylococcal proteins by SERPA

Protein samples were prepared from O11 and O46 strains grown in conditions that best mimic the mastitis context [11]. Each fraction (total, cell wall and supernatant) of O11 and O46 culture was immunoblotted using either group O11 or group O46 sera. Altogether, 89 proteins were identified as immunoreactive (Table 2). Comparison of SERPA results (see Figure 2, and Additional files 6 and 7, Figures S5 and S6) on the three fractions analyzed showed that immunoreactive proteins were mainly identified in supernatant samples prepared from aerobic and anaerobic cultures (Figure 2 and Additional file 7, Figure S6) and cell wall samples (Additional file 6, Figure S5, upper panels) whereas total protein samples were poorly recognized (Additional file 6, Figure S5, lower panels). A vast majority of the immunoreactive

proteins are thus found in supernatant and cell wall fractions (88.7%), and only 11.3% are found in the total fractions (Figure 3A). Of note, secreted and surface proteins are expected to be exposed to the host immune system. The predicted location of the proteins (according to the SurfG+ analysis of O11 and O46 genome sequences) [23], showed that the immunoreactive proteins were mainly predicted cytoplasmic (52.8%) (Figure 3A). Proteins were classified into categories based on functional annotation (Figure 3B). Most immunogenic proteins identified here are found in various functional categories involved in cellular machinery and metabolism; while 20% were virulence factors and virulence associated proteins.

Composition of the core and accessory seroproteomes

SERPA revealed 74 proteins as being recognised by both group O11 and group O46 sera (Table 2). These proteins defined the core seroproteome, i.e. a pool of staphylococcal proteins that are recognized by the host immune system in both *S. aureus* strains (Figure 3C). Moreover, 15 proteins were differentially recognized by group O11 sera or by group O46 sera. These proteins defined the accessory seroproteome, i.e. a pool of strain-specific proteins that are recognized by the host immune system. Among these 15 proteins, 12 appeared to be immunogenic only in infections with O11 (Table 2). These proteins include 7 virulence-associated proteins (Sbi, SspB, SspA, Aur, IsdH, Opp1A, and VWbp), 2 stress response proteins (AhpF, TrxB), 1 hypothetical protein (product of CDS O11_0736 or O46_1969 in O11 or O46), Ldh and a cysteine synthase. Of note, when considering the corresponding genes, all of these 12 genes are present and highly similar in O11 and O46 strains. Only *ahpF* and *vwbp* present 2 and 1 non-synonymous single nucleotide polymorphisms (NS-SNPs), respectively. These results suggest that O11 produce these 12 proteins in vivo in a mastitis context whereas O46 does not, or to a much lesser extent. Three proteins appeared to be immunoreactive with group O46 sera only. Two of them are hypothetical proteins corresponding to SAOV0649 (CDS 011_2290 and 046_0078, in O11 and O46, respectively) encoding a probable esterase or lipase, and a gene 011_0490/046_2740 with no homology in ED133 genome sequence. The third protein is IsaA, a virulence-associated immunodominant antigen A. The genes encoding IsaA and the probable esterase or lipase are highly homologous in O11 and O46 with only 1 synonymous SNP found when comparing O11_2290 and O46_0078. Interestingly, the CDS O11-0490 in O11 genome shares homology with O46_2740 in O46. However, sequence analysis reveals that O11-0490 corresponds to a truncated form of O46_2740. This gene encodes a predicted protein that presents 59% identity and 76% homology with exfoliative toxin D [24].

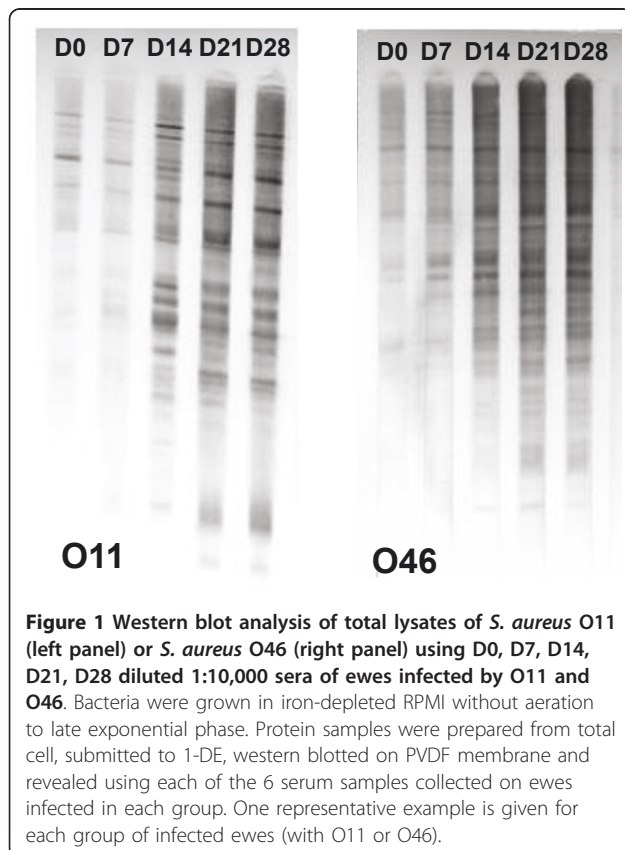


Table 2 Proteins identified in this study

Description ¹	Spots ²	O11 CDS ³	O46 CDS ³	ED133 CDS ³	pI ⁴	Mass (Da) ⁵	Score ⁶	Cov. ⁷	#pep. ⁸	EmPAI ⁹	Comp. ¹⁰	Loc. ¹¹	Immun. ¹²
Metabolism													
Energy production and conversion													
formate acetyltransferase	81, 83, 82	011_0041	046_0511	SAOV_0163	5,31	84808	1301,60	34,31	22	1,57	CW	C	
ldh L-lactate dehydrogenase	82, 99, 81, 83, 95	011_0136	046_0198	SAOV_2646c	4,80	34389	1749,37	63,64	26	21,75	CW	C	[82]
L-LACTATE DEHYDROGENASE (O11)	64	011_0021	046_0531	SAOV_0178	5,00	34548	745,83	50,79	14	2,59	S	C	[82]
bifunctional acetaldehyde-CoA/ alcohol dehydrogenase	79	011_0796	046_0709	SAOV_0095	5,68	94945	2090,64	45,45	33	2,26	CW	C	
D-3-phosphoglycerate dehydrogenase	100	011_0585	046_1131	SAOV_2344	5,32	34652	717,85	43,53	11	1,72	CW	C	
atpD F0F1 ATP synthase subunit beta	62, 90	011_2064	046_0898	SAOV_2144c	4,68	51368	631,03	30,21	10	0,98	S,CW	C	[83]
Nucleotide transport and metabolism													
adk adenylate kinase	9	011_0510	046_1206	SAOV_2266c	4,80	23375	531,72	42,38	9	2,80	S	C	[84]
deoD purine nucleoside phosphorylase	9	011_1051	046_0577	SAOV_2178	4,85	25892	470,94	53,39	8	1,97	S	C	[4]
guaB inositol-monophosphate dehydrogenase	102, 129	011_0077	046_0960	SAOV_0412	5,61	52818	1237,95	54,30	20	3,52	CW,T	C	[4]
Carbohydrate transport and metabolism													
gpmA 2,3-bisphosphoglycerate-dependent phosphoglycerate mutase	131	011_1952	046_0264	SAOV_2463c	5,23	26663	271,65	30,26	5	0,80	S,T	C	
eno enolase 2-phosphoglycerate dehydratase	62, 88, 90, 96, 137	011_2336	046_2241	SAOV_0818	4,55	47088	1868,52	63,59	25	7,09	S,CW,T	C	[4,52,85-87]
fda fructose-1,6-bisphosphate aldolase	107, 94, 72, 91, 95	011_0131	046_0202	SAOV_2650	5,06	32878	852,09	46,62	13	2,48	CW,S	C	[85-88]
gap glyceraldehyde-3-phosphate dehydrogenase	99, 57, 81, 82, 83	011_2340	046_2237	SAOV_0814	4,89	36258	940,06	46,13	13	3,04	CW,S	C	[82,86,87,89,90]
putative transaldolase	9	011_1872	046_2451	SAOV_1765	4,72	25689	554,11	46,84	10	3,32	S	C	
tpiA triosephosphate isomerase	9	011_2338	046_2239	SAOV_0816	4,81	27271	1396,16	76,28	21	16,78	S	C	[4,91,92]
atl autolysin	23, 31	011_1991	046_0320	SAOV_0999c	9,59	136983	2567,68	42,14	42	1,87	S	S	[52,76,93]
pyk pyruvate kinase	105	011_1282	046_0580	SAOV_1685	5,23	63067	271,45	11,62	5	0,29	CW	C	[94]
Lipid metabolism													
fabZ 3R-hydroxymyristoyl ACP dehydratase	126	011_2356	046_1839	SAOV_2140c	5,71	16071	86,65	13,70	2	0,47	T	C	

Table 2 Proteins identified in this study (Continued)

acetoin reductase	106	011_1332	046_1393	SAOV_0074	5,04	27199	566,84	40,31	7	1,82	CW	C	
Amino acid transport and metabolism													
dipeptidase PepV	62	011_1904	046_1329	SAOV_1737	4,56	52762	235,33	10,66	4	0,27	S	C	
CYSTEINE SYNTHASE (O11)	64	011_1382	046_2402	SAOV_0535	5,38	32955	266,80	28,71	5	0,61	S	C	
Information storage and processing													
Translation, ribosomal structure and biogenesis													
fus elongation factor G	95	011_0401	046_1769	SAOV_0582	4,80	76564	2173,77	68,11	30	4,11	CW	C	[3,90]
prs 50S ribosomal protein L25/ general stress protein Ctc	94	011_1370	046_2414	SAOV_0523	4,39	23773	384,17	34,56	6	2,26	CW,S	C	[95]
rplC 50S ribosomal protein L3	131	011_0531	046_1185	SAOV_2287c	9,72	22648	482,78	42,11	9	2,95	T	C	[95]
rpsA 30S ribosomal protein S1	137, 62, 121, 171	011_2142	046_1743	SAOV_1482	4,51	43252	1555,46	71,36	23	6,25	S,CW,T	C	[39,95]
rpsD 30S ribosomal protein S4	139	011_1260	046_1365	SAOV_1706	10,02	22999	428,22	40,50	8	1,96	T	C	[95]
rplB 50S ribosomal protein L2	91	011_0528	046_1188	SAOV_2284c	10,77	30136	239,93	25,27	5	0,69	CW	C	[95]
tsf elongation factor Ts	100, 64	011_0909	046_0755	SAOV_1259	5,05	32474	436,02	31,06	7	0,97	CW,S	C	[4,86,93,96]
tuf elongation factor Tu	90, 88, 96, 10, 122, 137, 149, 81, 82, 83, 95	011_0402	046_1768	SAOV_0583	4,74	43077	2665,48	84,26	38	52,14	S,CW,T	C	[3,52,82,85,86,90,93,96]
yfiA ribosomal subunit interface protein	106	011_2483	046_1255	SAOV_0789	5,25	21511	376,75	35,33	6	1,76	CW	C	
aspS aspartyl-tRNA synthetase	63	011_2454	046_2303	SAOV_1627	4,99	66584	233,90	7,65	4	0,21	S	C	
alaS alanyl-tRNA synthetase	82	011_2466	046_2291	SAOV_1616	5,00	98604	442,31	11,74	8	0,30	O	C	[97]
Transcription													
nusA transcription elongation factor NusA	62	011_0919	046_0765	SAOV_1268	4,60	43701	247,74	11,00	4	0,34	S	C	
DNA replication, recombination and repair													
dnaN DNA polymerase III subunit beta	90	011_1166	046_1471	SAOV_0002	4,66	41888	706,28	45,62	11	1,30	CW	C	
nuc staphylococcal thermonuclease precursor	151, 108, 5, 153, 206, 207, 217	011_2070	046_2528	SAOV_0832	9,20	25089	967,00	50,00	20	14,46	S,CW	PSE	[98]
ruvA Holliday junction DNA helicase	66	011_2442	046_2315	SAOV_1639	5,77	22249	137,72	17,00	3	0,52	S	C	
Posttranslational modification, protein turnover, chaperones													
ahpC alkyl hydroperoxide reductase subunit C	67, 82, 83, 99, 95	011_0085	046_0968	SAOV_0404c	4,88	20963	667,36	56,08	11	4,95	S,CW	C	[93]
AhpF ALKYL HYDROPEROXIDE REDUCTASE SUBUNIT F (O11)	97, 86	011_0086	046_0969	SAOV_0403c	4,68	54655	2242,14	67,06	34	9,91	CW	C	

Table 2 Proteins identified in this study (Continued)

dnaK chaperone protein	96, 173, 137	011_2230	046_2216	SAOV_1580	4,63	46021	2907,83	80,29	43	24,66	S,CW,T	C	[90,96,99]
peptidyl-prolyl cis-isomerase	212, 1, 68, 91	011_2089	046_2477	SAOV_1837	9,01	35602	574,32	31,56	11	1,66	S,CW	PSE	
tig trigger factor	105	011_1304	046_0602	SAOV_1664	4,34	48565	1061,87	61,43	17	2,25	CW	C	[94]
TrxB THIOREDOXIN REDUCTASE (O11)	64	011_2580	046_2228	SAOV_0801	5,21	33595	681,95	33,76	11	1,81	S	C	[93]
Cellular processes													
Cell envelope biogenesis, outer membrane													
IsaA IMMUNODOMINANT ANTIGEN A (O46)	185, 8, 161, 186, 9, 164, 189	011_0168	046_0166	SAOV_2614c	5,91	24219	1516,56	59,23	22	40,99	S	S	[3,75]
isdA iron-regulated cell wall-anchored protein	31, 27, 73, 74, 75, 83, 118, 79, 81, 82, 95	011_1476	046_1296	SAOV_1125c	8,69	70445	2288,12	57,87	38	6,04	S,CW	PSE	[100-102]
isdB cell surface transferrin-binding protein	212, 211, 210, 208, 193, 156, 138, 110, 70, 86, 131, 156, 193	011_1477	046_1295	SAOV_1126c	9,54	39197	886,30	45,48	15	4,45	S,CW,T	PSE	[54,100,103]
IRON-REGULATED SURFACE DETERMINANT PROTEIN H (O11)	55, 31	011_1248	046_1353	SAOV_1717	5,05	100650	2209,72	42,11	37	2,58	S	PSE	[75]
IsdD iron-regulated protein	15, 16	011_1480	046_1292	SAOV_1128	8,51	41357	278,05	15,36	5	0,47	S	PSE	
Cell motility and secretion													
N-acetylmuramoyl-L-alanine amidase	52, 51, 187	011_1090	046_1546	SAOV_2693	5,87	69226	3097,93	71,57	43	16,52	S	S	[57,75,76]
Inorganic ion transport and metabolism													
nasE assimilatory nitrite reductase	10	011_1932	046_0245	SAOV_2445c	4,95	11430	126,05	23,08	2	0,70	S	C	
mntC Manganese/iron transport system substrate-binding protein	94	011_2274	046_0062	SAOV_0666c	8,68	34719	1183,08	51,46	20	10,68	S,CW	PSE	
sirA iron-regulated lipoprotein	135, 64	011_1345	046_1405	SAOV_0062	9,20	36735	609,79	35,45	11	1,58	S,T	PSE	[104]
fhuD2 ferrichrome-binding protein	91	011_0566	046_1150	SAOV_2323c	9,16	33990	406,75	30,13	8	1,10	CW	PSE	[105]
ferrichrome ABC transporter lipoprotein	91	011_1857	046_1674	SAOV_2224c	9,44	36751	600,45	38,41	11	1,57	CW	PSE	
Signal transduction mechanisms													
SA1540 GAF domain-containing protein	10	011_1261	046_1366	SAOV_1705	5,09	17042	139,34	22,73	3	0,72	S	C	
Universal stress response protein	7, 123	011_1269	046_1374	SAOV_1697	5,60	18463	973,68	78,31	12	19,34	S,CW	C	[106]
Toxins and haemolysins													
beta-hemolysin	15, 19, 205	011_1750	046_2394	SAOV_2040	8,75	37386	1308,79	61,03	20	4,92	S	S	[57,107]
hla alpha-hemolysin precursor	13, 1, 15, 19, 21, 68, 72, 107, 146, 153	011_1514	046_1259	SAOV_1161c	8,87	36329	2238,72	76,71	34	44,90	S,CW,T	S	[93,107]
hlgC gamma-hemolysin component C	68, 1	011_1956	046_0268	SAOV_2469	9,29	35562	765,07	31,43	12	1,90	S,CW	S	[57]

Table 2 Proteins identified in this study (Continued)

Virulence/defence mechanisms													
Sbi IGG-BINDING PROTEIN SBI (O11)	216, 217, 212	011_1954	046_0266	SAOV_2466	9,38	49998	984,16	41,74	18	2,80	S	S	[76]
SspB CYSTEINE PROTEASE PRECURSOR (O11)	58, 57, 64, 182, 215	011_2154	046_0327	SAOV_0993c	5,45	42714	2027,86	65,52	30	11,52	S	S	[4]
SplF serine proteinase	4	011_0672	046_2496	SAOV_1795	9,36	25638	255,88	23,01	5	0,84	S	S	[108]
lukD leukotoxin D subunit	1	011_0685	046_2484	SAOV_1812	9,14	36936	365,37	22,02	7	0,98	S	S	[109]
lukE leukotoxin E subunit	1, 68	011_0686	046_2483	SAOV_1813c	9,38	34126	451,11	17,65	7	1,77	S,CW	S	[109]
leukocidin chain lukM precursor	68, 1, 120, 145, 177, 194, 201, 202, 94	011_1215	046_2777	SAOV_1909	9,41	35054	2504,69	71,43	35	29,80	S,CW,T	S	[58,110]
leukocidin F subunit	16, 70	011_1752	046_1972	SAOV_2041	8,29	38639	1154,65	45,27	19	11,64	S,CW	S	[58,110]
leukocidin S subunit	199, 5, 70, 108, 109, 197, 200, 211	011_1753	046_1973	SAOV_2042	9,38	40379	1399,91	55,56	23	6,70	S,CW	S	[58,110]
Panton-Valentine leukocidin LukF-PV chain precursor	1, 68, 70, 15, 31, 119, 195, 203, 204, 10, 91	011_1216	046_2776	SAOV_1908	9,16	36496	965,38	50,31	15	3,37	S,CW	S	[58,110]
plc 1-phosphatidylinositol phosphodiesterase	11, 12, 19	011_1424	046_1419	SAOV_0049	7,12	37030	2759,20	71,95	44	84,00	S	S	[4]
Aur ZINC METALLOPROTEINASE AUREOLYSIN (O11)	220, 63	011_1083	046_1553	SAOV_2686c	4,98	54947	921,93	47,39	17	1,68	S	C	[76,111]
Opp1A OLIGOPEPTIDE TRANSPORTER SUBSTRATE BINDING PROTEIN (O11)	86	011_2424	046_2102	SAOV_2517c	8,33	59224	1398,01	47,53	24	3,28	CW	PSE	
SspA GLUTAMYL ENDOPEPTIDASE SERINE PROTEASE (O11)	56, 184, 214	011_2155	046_0325	SAOV_0994c	4,68	32250	1575,55	69,26	24	24,18	S	C	[57]
SECRETED VON WILLEBRAND FACTOR-BINDING PROTEIN (O11)	22	011_2679	046_0987	SAOV_2051c	8,39	57935	1122,89	36,67	17	1,70	S	S	
epidermal cell differentiation inhibitor B	208, 209, 193, 156, 4	011_0489	046_2741		9,51	27969	1385,18	69,32	22	22,31	S	S	
Miscellaneous													
adhA alcohol dehydrogenase	100	011_1554	046_0086	SAOV_0640	5,34	36025	1167,82	66,37	16	4,30	CW	C	[87,93]
exported secretory antigen precursor	67	011_0584	046_1132	SAOV_2343	5,77	17388	397,17	33,13	5	1,43	S	S	
lip triacylglycerol lipase precursor	31, 27	011_1119	046_1518	SAOV_2721c	8,13	76637	1723,17	50,95	29	2,36	S	S	[93]
mgo malate:quinone oxidoreductase	128	011_0130	046_0203	SAOV_2651c	6,12	55964	1047,99	46,79	17	2,50	T	C	
putative staphylococcal enterotoxin	151	011_0097	046_0981	SAOV_0394	9,54	23311	173,20	18,72	4	0,71	S	S	
Unknown													
HYPOTHETICAL PROTEIN (O11)	220	011_0736	046_1969	SAOV_0454	4,89	56229	823,11	39,40	14	1,21	S	S	
hypothetical protein (Similar to truncated map-w protein (91%))	88, 10, 62	011_1749	046_2393		9,91	53686	899,64	34,52	18	2,09	S,CW	S	[112]

Table 2 Proteins identified in this study (Continued)

hypothetical protein (Similar to beta-lactamase (84%))	10	011_0679	046_2490		6,84	20800	726,52	47,15	10	7,09	S	S
HYPOTHETICAL PROTEIN (O46)	157, 160, 175, 189, 193	011_0490	046_2740		8,88	30854	2343,27	74,29	41	65,07	S	S
hypothetical protein (Similar to probable glutamyl-endopeptidase (76%))	66	011_0488	046_2742		5,44	20552	741,93	47,62	12	5,11	S	C
SA0570 HYPOTHETICAL PROTEIN (O46)	219,154, 127	011_2290	046_0078	SAOV_0649	9,17	18554	815,59	69,05	13	15,93	S,CW	S
SA0663 hypothetical protein	10, 164, 94	011_2561	046_2636	SAOV_0742c	9,15	16047	457,11	35,62	8	3,63	S	PSE
SA0914 hypothetical protein	6	011_2000	046_0311	SAOV_1008c	6,55	11338	522,48	57,14	8	13,10	S	S
pathogenicity island protein	55	011_2741	046_0985	SAOV_0429	9,55	12071	204,61	19,64	3	1,12	S	S
SA1607 hypothetical protein	91	011_1867	046_2456	SAOV_1770	6,04	34973	232,41	16,56	4	0,43	CW	S
SA1402 hypothetical protein	91	011_2223	046_2209	SAOV_1573	5,60	35160	448,93	28,27	6	0,72	CW	S

Gene products of the accessory seroproteome are indicated in bold capital letters, (O11) indicates O11-specific proteins, (O46) indicates O46-specific proteins.

All the other proteins belong to the core seroproteome.

¹: Proteins are classified in Gene Ontology functional classes. Names are given according to annotation of available *S. aureus* sequence genomes.

²: Spot number (see figures).

³: Coding sequence numbers corresponding to the identified proteins in *S. aureus* O11, *S. aureus* O46, and ED133, respectively.

⁴: Theoretical isoelectric point as determined from the predicted protein sequence.

⁵: Theoretical Mass as determined from the predicted protein sequence.

⁶: Mascot standard score.

⁷: % of the protein sequence covered by the peptides identified.

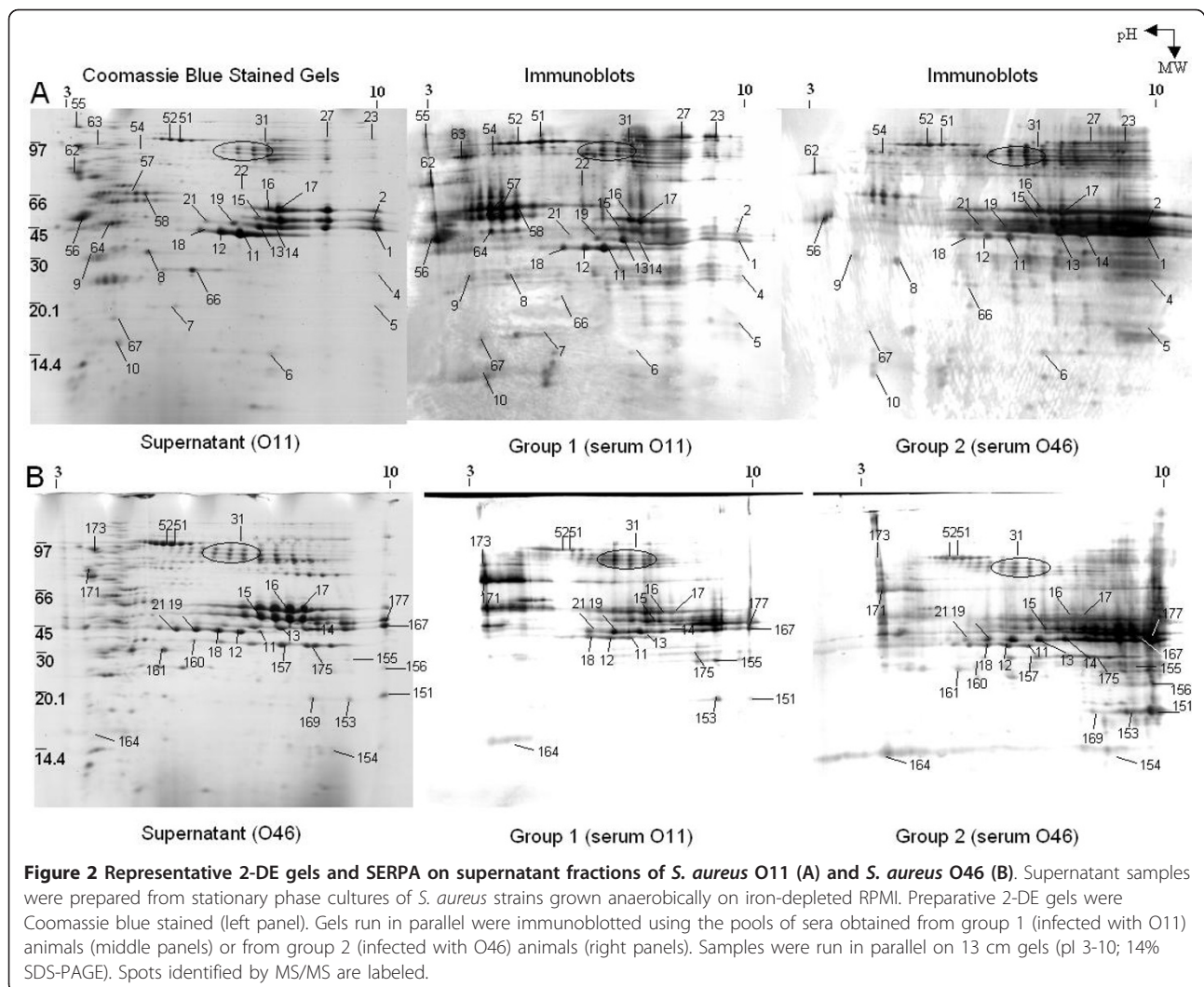
⁸: number of peptides identified.

⁹: exponentially modified protein abundance index.

¹⁰: Subproteome compartment where the spot was identified. CW, cell wall; S, supernatant; T, total fraction.

¹¹: predicted protein localization. C, cytoplasmic; S, secreted; PSE, predicted surface exposed.

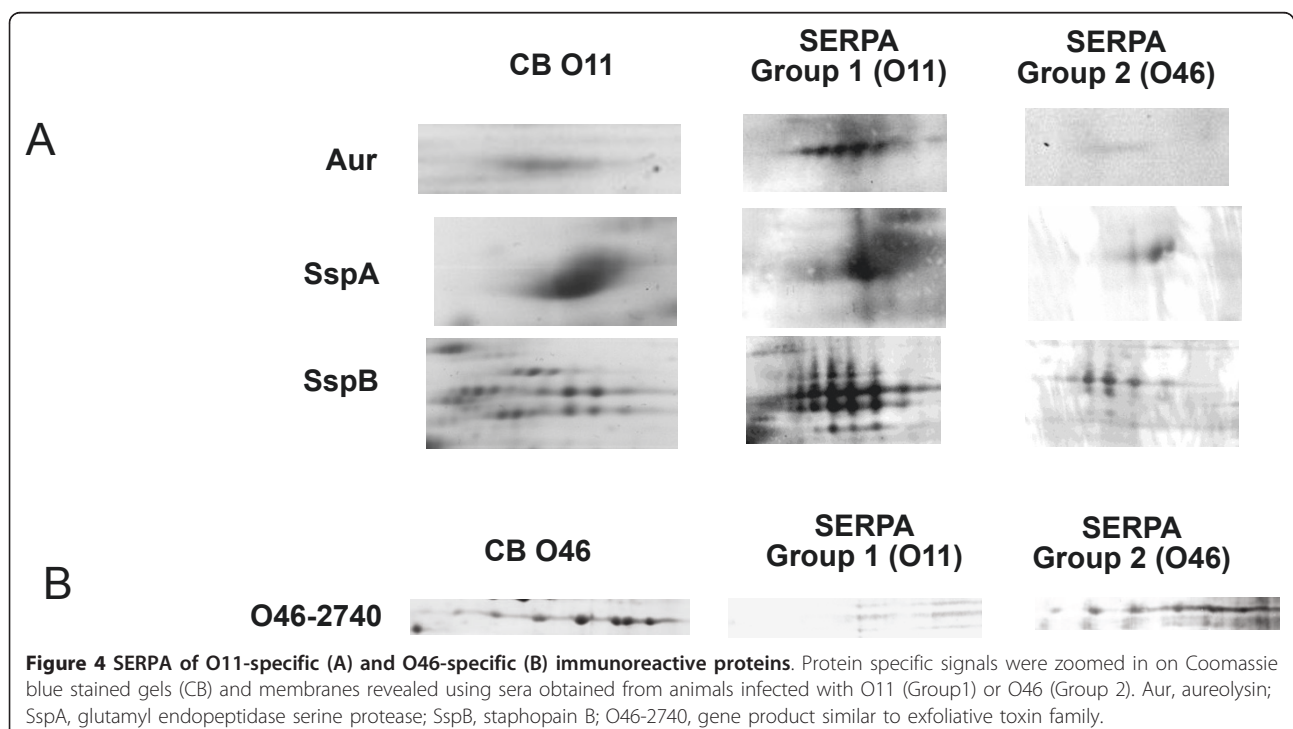
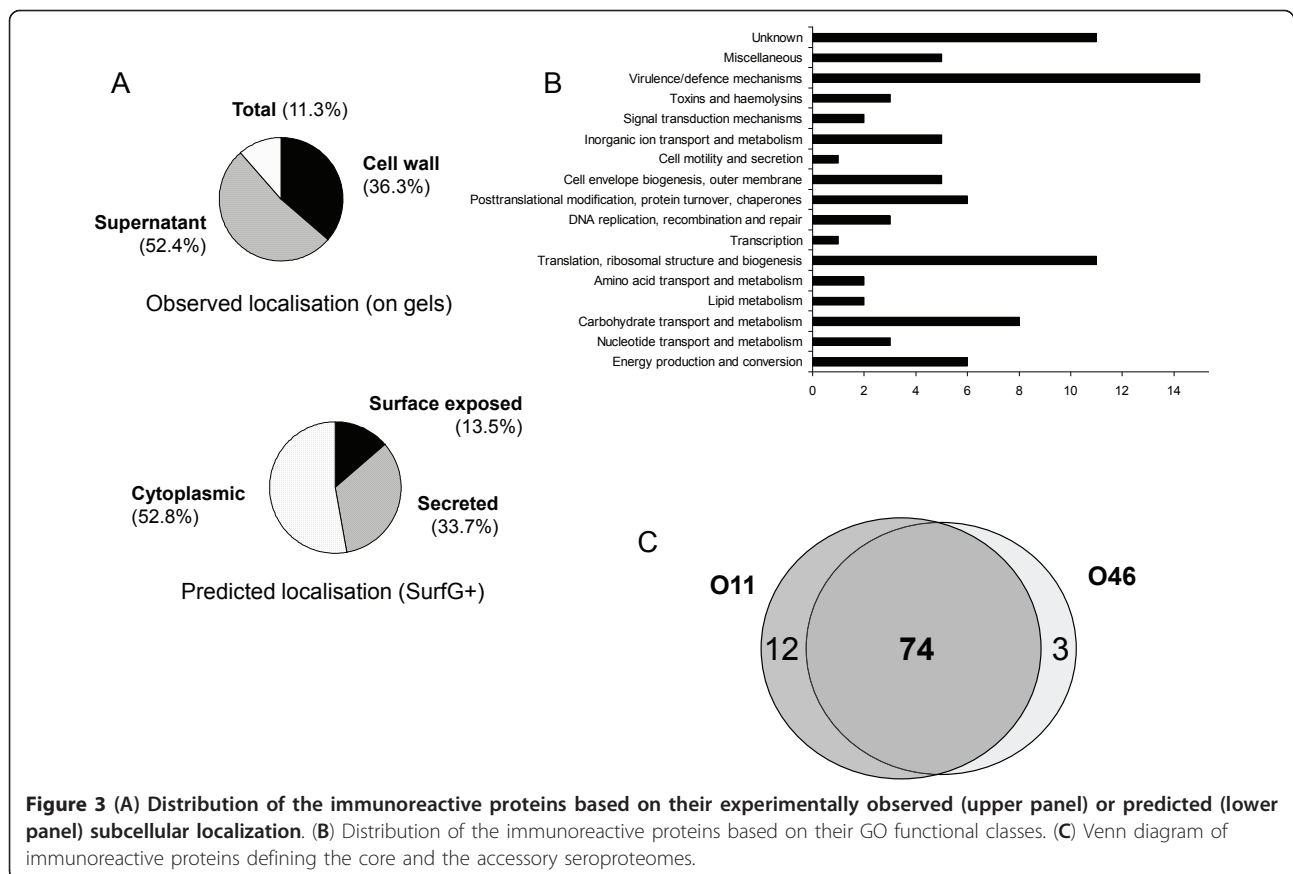
¹²: reported as immunogen elsewhere.

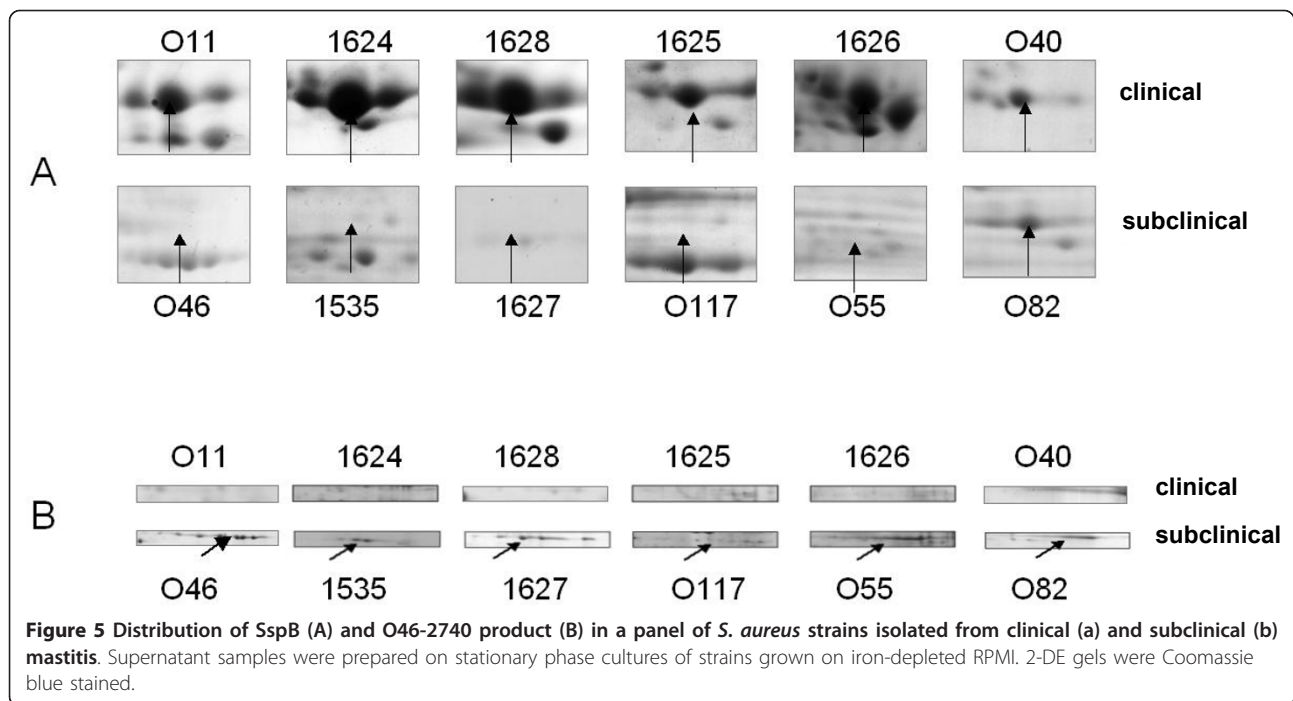


Selected *S. aureus* immunoreactive proteins are widely distributed among a panel of strains isolated from clinical vs. subclinical ewe mastitis

In order to test the hypothesis that the seroproteomic variations identified by SERPA on the two *S. aureus* isolates were more widely distributed among isolates of a specific host- and clinical-association, we screened an additional 10 strains isolated from subclinical ($n = 5$) and severe (i.e. clinical or gangrenous mastitis; $n = 5$) cases of ewe mastitis for the presence of 2 selected proteins by proteome analysis of supernatant samples (i.e. 2-DE and Coomassie blue staining). The O11 (severe mastitis) protein selected was SspB, which belongs to a proteolytic cascade where a metalloprotease aureolysin (Aur) activates a serine protease zymogen proSspA, which in turn activates the SspB cysteine protease [25]. SspB and the two other proteins, SspA and Aur of the cascade, were recognized in O11 and yielded a very faint signal in O46 (Figure 4A). SspB, one element of this

proteolytic cascade, was detected in the culture supernatant of strains isolated from clinical mastitis cases whereas it was not found in the strains isolated from subclinical mastitis (Figure 5A). The other protein tested was O46_2740 gene product (with similarity to exfoliative toxin family), which was specifically recognized in O46 infections and did not yield any significant signal in O11 infections (Figure 4B). When considering its presence in the culture supernatant of other *S. aureus* strains isolated from clinical or subclinical mastitis in ewes, we observed that it was only detected in the subclinical strains (100%) whereas it was undetectable in any of the strains isolated from clinical mastitis (Figure 5B). These results show that at least these tested proteins are differentially produced by *S. aureus* strains isolated from clinical or subclinical mastitis cases. Whether these differences are involved or not in the onset and the acuteness of the subclinical vs. clinical mastitis remains to be demonstrated.





Discussion

Two closely related *S. aureus* ovine strains reproducibly induce distinct mastitis types in ewe and mouse models. Contrarily to *Escherichia coli* mastitis, which severity is mainly determined by host factors and not by the strains features [26], it seems that in *S. aureus*, inter-strain variations exist in terms of virulence potential. Such variations have been experimentally observed but the involved staphylococcal factors have not been clearly identified yet [27-29]. *S. aureus* content in virulence factors reportedly varies from strain to strain and this may account for the large panel of symptoms encountered in ruminant mastitis [30]. It was also shown that some elements of the core genome could account for host adaptation in *S. aureus* ruminant isolates [8]. Here, we show that two closely related *S. aureus* strains are able to induce dramatically different mastitis outcomes in animal model. The experimental mastitis induced in ewes confirmed that strain O11, originally isolated from a gangrenous mastitis, induced more severe infections than strain O46 in ewes. To corroborate the finding of the diversity of the clinical signs caused by O11 and O46, the mouse model of mastitis was employed for further investigation [31]. Despite variable susceptibility to viral, fungal or bacterial infections among the different mouse lines [32], the mouse model was validated as an experimental approach to the study of bovine mastitis [33]. In this study, CD-1 mice infected with O11 or O46 revealed diverse clinical signs and showed different cytokine profiles: O46 induced higher IL-1 β and TNF- α

levels in the mammary gland lysates and higher serum levels of IL-1 β and MCP-1. It has been shown that the cytokines play a pivotal role in the development of the mastitis [34-36]. Recent investigation revealed that the proinflammatory cytokines, TNF- α and IL-1 β , increased the capacity of bovine endothelial cells to eliminate intracellular *S. aureus* [37]. Endothelial cells may so represent a functional and active defence barrier against bacteria invasion of infected quarters. Higher synthesis of proinflammatory cytokines in O46-infected mice might thus reflect a higher anti-staphylococcal response and may allow more effective elimination of strain O46. Further investigation has to be conducted to confirm this hypothesis. Altogether, our findings demonstrated that these two well-characterized strains reproducibly induce drastically different mastitis in terms of severity, and will prove useful tools to gain further insights into host-pathogen interactions.

Inventory of mastitis-associated core and accessory seroproteomes in *S. aureus* reveals new mastitis-related antigens

This study reports the application of SERPA to determine the core and accessory seroproteomes resulting from experimental ewe mastitis induced by two different *S. aureus* strains, isolated from a subclinical mastitis (O46) and a gangrenous mastitis (O11). To determine which proteins are recognized by the ewe immune system during mastitis with different severity, experimental infections were carried out on primiparous ewes using

these two *S. aureus* strains. By comparison of the SERPA profiles, this study allowed, for the first time, the determination of core and accessory seroproteomes for *S. aureus* in a mastitis context. Eighty nine proteins were immunogenic in ewe mastitis implying they were produced during the infection. Seventy four were found in both seroproteome profiles and composed a core seroproteome. Fifteen of them were found strain-specific and composed the accessory seroproteome. Among the 74 proteins belonging to the core seroproteome, only 44 (59.5%) had already been reported to be immunogenic in infections caused by *S. aureus* or other pathogens (e.g. *Bacillus anthracis*, *Staphylococcus epidermidis*, *Clostridium perfringens*, *Schistosoma japonicum*) (Table 2). Among these previously described antigens, only 30S ribosomal S1 and LukM/LukF'-PV were previously reported to be immunogenic in *S. aureus* bovine mastitis [38,39]. These 44 proteins include most of the immunoreactive proteins categorized in Toxins-Haemolysins and Virulence/Defence mechanisms. The remaining 30 proteins (40.5%) are described for the first time as potential staphylococcal antigens in a mastitis context and, to our knowledge, were not described as immunogenic elsewhere. In the accessory seroproteome, 8 out of the 15 proteins identified were already described as immunogenic elsewhere whereas 7 of them (AhpF, Opp1A, VVbp, Mqo, cysteine synthase and two hypothetical proteins) are described as such for the first time (Table 2). A majority of the proteins identified here are thus reported as immunogenic for the first time in a mastitis context. Furthermore, 37 out of 89 proteins of the total seroproteome (~42%) correspond to proteins described as staphylococcal antigens for the first time whatever the infection considered. Only four of these new antigens are categorized in Toxins-Haemolysins and Virulence/defense mechanisms. The other ones are mostly found in Metabolism ($n = 9$), Information storage ($n = 7$), and Unknown function ($n = 13$). Only a few studies previously analyzed *S. aureus* proteome and all of them were carried out on human isolates, which reportedly differ from ruminant isolates [8,9,40] and the strains were grown in laboratory culture conditions [4,41-46]. Here we used two ovine isolates grown in culture conditions mimicking the mastitis context [11]. These two criteria might account for the abundance of new staphylococcal antigens identified in this study.

Importance of secreted and exported proteins in seroproteomic patterns

It is commonly assumed that surface exposed proteins play a role in host-pathogen interactions and that, because of their cellular localization, they are preferentially recognized by the host immune system. In this study, immunoreactive proteins were mainly identified

in protein samples prepared from supernatant and cell wall fractions revealing, somehow, discrepancies between experimental (gels of total, cell wall and supernatant protein fractions) and theoretical localization (as determined in silico). Indeed, among the 47 immunoreactive proteins that were predicted cytoplasmic, only 10 were experimentally found in the total fraction and 37 were found in supernatant or cell wall fractions (Table 2). Such discrepancies were observed in other studies as well [4,47,48]. Some proteins are multifunctional and found both intra- and extracellularly. For example, glyceraldehyde-3-phosphate dehydrogenase [49] and enolase [50] were shown to be both cytoplasmic and surface exposed. In addition to their metabolic role in the cytoplasm, they play a role as adhesins when exposed on the bacterial surface. Furthermore, a new mechanism of protein exportation in Gram positive bacteria was recently described and not included yet in prediction tools for protein localization. It has actually been demonstrated that *S. aureus*, like some Gram negative bacteria, secretes membrane vesicles, which contained at least 90 different proteins [51]. Twelve of the proteins identified here were found in the vesicle-secreted proteins identified by Lee et al. [51]. Whether the other immunoreactive proteins identified here are secreted through a membrane vesicle mechanism remains undetermined.

The core seroproteome

Proteins belonging to the core seroproteome are immunogenic regardless the severity of the induced mastitis. These proteins are therefore good targets for the development of new strategies against *S. aureus* mastitis. Some of them have been tested as vaccine target to prevent staphylococcal infections e.g., Enolase (Eno) [52], IsdA (an iron-regulated cell wall-anchored protein) and IsdB (a cell surface transferrin-binding protein) [53,54], GapC/B protein (glyceraldehyde-3-phosphate dehydrogenase) [55], Hla (alpha-hemolysin) [56]. These vaccines seem at least to limit infection damage (by notably decreasing mortality) but not to provide total effective protection.

Well-known virulence factors, such as Hla, Hlb (beta-hemolysin), SspA (V8 serine protease), ScpA (Staphopain A), and Plc (phosphatidylinositol phosphodiesterase), were identified here in a mastitis context and were previously identified as immunogenic in human infections [4,57]. Hla and leukotoxins were reportedly produced in vivo during mastitis [58] but to our knowledge this is the first time that the other proteins listed in Table 2 are shown to be produced in vivo during mastitis. These proteins deserve more attention to test their role in the mastitis onset and to check their potential use as target for vaccine development. Of note, we found 5 iron-related

proteins (IsdA, IsdB, IsdH, MntC and SirA, 4 of which belonged to the core seroproteome) consistent with the culture conditions (iron depletion) and with a role in the physiologically important and difficult iron uptake in the mastitis conditions.

The accessory seroproteome

Some proteins were shown to be specifically produced by strain O11 or by strain O46 in infected ewes. None of 12 proteins specifically produced by O11 in vivo had previously been reported as produced during mastitis. Their role in mastitis is thus unknown. Nevertheless most of them have been described as immunogenic in *S. aureus* infections in humans. Their function is mainly linked to resistance to host immune response like for IsdH [59], AhpF and TrxB, implied in oxidative stress responses [60] that may confer O11 resistance to neutrophils and so be an advantage compared to O46, Sbi that forms complexes with immunoglobulins Fc regions [61], Aur and SspB. Aureolysin is essential for activation of SspA [25], which in turn activates the SspB zymogen [62]. Aur, SspA and SspB seemed to be more produced in O11 than in O46. They can degrade conjunctive tissue [63]. Aureolysin has been shown to be involved in resistance to macrophage phagocytosis [64] and to significantly contribute to the activation of the fibrinolytic system [65]. It might thus reinforce the degradation of extracellular matrix in the mammary gland and promote bacterial spread and invasion. SspB can activate the chemoattractant chemerin, which results in a local inflammation of the tissue [66]. Moreover it induces the depletion of functional phagocytes at the site of infection by blocking phagocytosis by neutrophils and inhibiting their chemotactic activity [67]. SspB may so take part in the observed swelling of the mammary gland observed during gangrenous mastitis. Moreover, it has been shown that SspA and SspB play an important role in virulence in a mouse abscess model [68]. Opp1A was found to be produced by strain O11 in vivo. Opp proteins seem to take part in virulence in several infection models [69]. Although the role of Opp has not been clearly demonstrated until now, Opp proteins have also been reported to be involved in virulence in other Gram positive pathogens such as group A streptococci [70], *Streptococcus agalactiae* [71] or *Listeria monocytogenes* [72]. A variant of von Willebrand factor-binding protein gene has recently been located on the pathogenicity island SaPIov2, characteristic of small ruminant isolates [9]. Interestingly, besides being a coagulase, it is also an activator of pro-thrombin [73] that is present in cow milk [74]. Pro-thrombin activation in thrombin may have a pro-inflammatory effect during mastitis and thus take part in the symptoms observed in animals infected by O11. Whether and how these proteins are involved

in the acuteness of the disease induced by O11 remains unknown. O46 specifically produced 3 immunoreactive proteins when compared to O11. IsaA has been reported to be immunogenic in many *S. aureus* infections [3,52,57,75-77]. It presents autolytic activity and is necessary for complete virulence [78] but its role in mastitis is not known. Interestingly, a protein (encoded by O46-2740) which shows similarity to exfoliative toxin D (ETD) was found produced by O46 and not by O11. Three amino-acids were shown to constitute the active site common to all the exfoliative toxins [79]. These amino-acids are present in O46_2740 gene (O46 strain) product but one is missing in O11-0490 gene product. The corresponding gene is not found in the recently released sequence of ovine strain ED133 [9] although we found its product in the exoproteome of 5 additional *S. aureus* strains isolated from subclinical mastitis. ETD is associated with cutaneous abscesses and furuncles [80]. Interestingly this toxin is also produced by Coagulase Negative Staphylococci species like *Staphylococcus hyicus*, *Staphylococcus pseudintermedius* and *Staphylococcus chromogenes*. CNS are highly prevalent in ovine subclinical mastitis [81]. Whether this particular toxin is specifically produced and plays a role during subclinical mastitis remains to be tested. Altogether, proteins differentially produced by O11 and O46 may be considered as potential marker of gangrenous or subclinical mastitis but this has still to be further demonstrated.

Conclusion

To the best of our knowledge, this study provides the first comparative and comprehensive serological proteome analysis in a mastitis context. The proteins identified are immunogenic in ewes implying that they are also produced in the udder during infection. Many of them are found immunogenic for the first time and a great proportion was found in the supernatant and cell wall fractions even though they were predicted as cytoplasmic proteins. Whether or how these proteins are really involved in the mastitis infection and or the severity of the mastitis remains to be elucidated. This study provides a handful of interesting candidates for further investigations on their potential use as new targets for prophylactic or curative strategies such as vaccine or drug target as some appear to be involved in important virulence-associated functions (toxins, immune evasion, iron uptake).

Additional material

Additional file 1: Table S1: Criteria used to define the acuteness of mastitis symptoms.

Additional file 2: Figure S1: Dynamics of gangrenous mastitis onset in ewes infected by *S. aureus* O11 (argyles) and O46 (squares).

Additional file 3: Figure S2: (A) Intramammary growth of *S. aureus* strain O11 and O46 in CD-1 mice. Populations are the mean values of *S. aureus* counts in homogenates of 12 mice mammary gland. (B) Temperature of infected mice 24h post-infusion. The mean value of the groups of mice infected with *S. aureus* O11 or O46 is given. The dashed line indicates the temperature of the animals at T0, before infection. Asterisks indicate statistically significant values.

Additional file 4: Figure S3: Quantification of IL1 β , IL6, TNF, KC and MCP-1 in mammary gland lysates with BDTM Cytometric Bead Array. Cytokines were quantified on homogenates of mammary glands infected by *S. aureus* O11 or O46. Quantities are the mean values of 6 homogenates for each group (O11 and O46) and are expressed in pg/20 μ g of total protein.

Additional file 5: Figure S4: Quantification of IL1 β , IL6, TNF, KC and MCP-1 in sera with BDTM Cytometric Bead Array. Cytokines were quantified in sera collected on 12 mice infected by *S. aureus* O11 (6 sera) or O46 (6 sera). Quantities are the mean values of 6 sera for each group (O11 and O46) and are expressed in pg/mL.

Additional file 6: Figure S5: Representative 2-DE gels and SERPA on cell wall fraction (upper panels) and total proteins (lower panels) of *S. aureus* O11. Supernatant samples were prepared from late exponential phase cultures of *S. aureus* strains grown anaerobically on iron-depleted RPMI. Preparative 2-DE gels were Coomassie blue stained (left panel). Gels run in parallel were immunoblotted using the pools of sera obtained from group 1 (infected with O11) animals (middle panels) or from group 2 (infected with O46) animals (right panels). Samples were run in parallel on 13 cm gels (pl 4-7; 12% SDS-PAGE). Spots identified by MS/MS are labeled.

Additional file 7: Figure S6: Representative 2-DE gels and SERPA on supernatant fractions of *S. aureus* O46 (upper panels) and *S. aureus* O11 (lower panels). Supernatant samples were prepared from late exponential phase cultures of *S. aureus* strains grown anaerobically on iron-depleted RPMI. Preparative 2-DE gels were Coomassie blue stained (left panel). Gels run in parallel were immunoblotted using the pools of sera obtained from group 1 (infected with O11) animals (middle panels) or from group 2 (infected with O46) animals (right panels). Samples were run in parallel on 13 cm gels (pl 3-10; 12% SDS-PAGE). Spots identified by MS/MS are labeled.

Acknowledgements

Caroline Le Maréchal is the recipient of a PhD grant from the French National Institute for Agricultural Research (INRA) and the Agence Nationale de Sécurité Sanitaire (ANSES), IMISa Project. CLM received a 3-month grant from Université Européenne de Bretagne (UEB).

Author details

¹INRA, UMR1253 Science et Technologie du Lait et de l'Œuf, F-35042 Rennes, France. ²AGROCAMPUS OUEST, UMR1253 Science et Technologie du Lait et de l'Œuf, F-35042 Rennes, France. ³ANSES, Laboratoire de Sophia-Antipolis, Unité pathologie des ruminants, F-06902 Sophia-Antipolis, France. ⁴Genomic Research Laboratory, Service of Infectious Diseases; University of Geneva Hospitals (HUG), CH-1211 Geneva 14, Switzerland. ⁵Ghent University, Faculty of Veterinary Medicine, Merelbeke, Belgium. ⁶LVD06, F606902 Sophia-Antipolis, France.

Authors' contributions

CLM participated in the experimental mastitis in ewes, carried out the 2-DE analyses, participated in the identification of the immunoreactive proteins and drafted the manuscript. JJ and GJ participated in the identification of the immunoreactive proteins by mass spectrometry, SE, NB and RT participated in the design of the study and in the results analyses, CP, JMG and EV carried out the experimental mastitis in ewes, DD and EM carried out the experimental mastitis in mice, DH, PF and JS carried out the genome sequencing and genome sequence analyses, EV and YLL conceived the study, and participated in its design and coordination. All authors read and approved the final manuscript.

Competing interests

The authors declare that they have no competing interests.

Received: 18 October 2010 Accepted: 15 February 2011

Published: 15 February 2011

References

- Halasa T, Nielen M, Huirne RBM, Hogeveen H: **Stochastic bio-economic model of bovine intramammary infection.** *Livest Sci* 2009, **124**:295-305.
- Le Maréchal C, Thiéry R, Vautour E, Le Loir Y: **How do mastitis impact technological properties of milk and quality of milk products?** *Dairy Sci Technol* 2011.
- Vytvytska O, Nagy E, Bluggel M, Meyer HE, Kurzbauer R, Huber LA, Klade CS: **Identification of vaccine candidate antigens of *Staphylococcus aureus* by serological proteome analysis.** *Proteomics* 2002, **2**:580-590.
- Burlak C, Hammer CH, Robinson MA, Whitney AR, McGavin MJ, Kreiswirth BN, DeLeo FR: **Global analysis of community-associated methicillin-resistant *Staphylococcus aureus* exoproteins reveals molecules produced in vitro and during infection.** *Cell Microbiol* 2007, **9**:1172-1190.
- Greub G, Kebbi-Beghdadi C, Bertelli C, Collyn F, Riederer BM, Yersin C, Croxatto A, Raoult D: **High throughput sequencing and proteomics to identify immunogenic proteins of a new pathogen: the dirty genome approach.** *PLoS One* 2009, **4**:e8423.
- Vautour E, Abadie G, Guibert JM, Huard C, Pepin M: **Genotyping of *Staphylococcus aureus* isolated from various sites on farms with dairy sheep using pulsed-field gel electrophoresis.** *Vet Microbiol* 2003, **96**:69-79.
- Vautour E, Magnone V, Rios G, Le BK, Bergeron D, Lina G, Meugnier H, Barby P, Thiéry R, Pepin M: **Genetic differences among *Staphylococcus aureus* isolates from dairy ruminant species: a single-dye DNA microarray approach.** *Vet Microbiol* 2009, **133**:105-114.
- Ben Zakour NL, Sturdevant DE, Even S, Guinane CM, Barbey C, Alves PD, Cochet MF, Gautier M, Otto M, Fitzgerald JR, Le Loir Y: **Genome-Wide Analysis of Ruminant *Staphylococcus aureus* Reveals Diversification of the Core Genome.** *J Bacteriol* 2008, **190**:6302-6317.
- Guinane CM, Ben Zakour NL, Tormo-Mas MA, Weinert LA, Lowder BV, Cartwright RA, Smyth DS, Smyth CJ, Lindsay J, Gould KA, Witney A, Hinds J, Bollback JP, Rambaut A, Penadés JR, Fitzgerald JR: **Evolutionary genomics of *Staphylococcus aureus* reveals insights into the origin and molecular basis of ruminant host adaptation.** *Genome Biol Evol* 2010, **2**:454-466.
- Vautour E, Cockfield J, Le Maréchal C, Le Loir Y, Chevalier M, Robinson DA, Thiéry R, Lindsay J: **Difference in virulence between *Staphylococcus aureus* isolates causing gangrenous mastitis versus subclinical mastitis in a dairy sheep flock.** *Vet Res* 2009, **40**:56-67.
- Le Maréchal C, Jan G, Even S, McCulloch JA, Azevedo V, Thiéry R, Vautour E, Le Loir Y: **Development of serological proteome analysis of mastitis by *Staphylococcus aureus* in ewes.** *J Microbiol Methods* 2009, **79**:131-136.
- Trivier D, Davril M, Houdret N, Courcol RJ: **Influence of iron depletion on growth kinetics, siderophore production, and protein expression of *Staphylococcus aureus*.** *FEMS Microbiol Lett* 1995, **127**:195-199.
- Hernandez D, Francois P, Farinelli L, Osteras M, Schrenzel J: **De novo bacterial genome sequencing: millions of very short reads assembled on a desktop computer.** *Genome Res* 2008, **18**:802-809.
- Anastasiou R, Leverrier P, Krestas I, Rouault A, Kalantzopoulos G, Boyaval P, Tsakalidou E, Jan G: **Changes in protein synthesis during thermal adaptation of *Propionibacterium freudenreichii* subsp. shermanii.** *Int J Food Microbiol* 2006, **108**:301-314.
- Rabilloud T, Carpentier G, Tarroux P: **Improvement and simplification of low-background silver staining of proteins by using sodium dithionite.** *Electrophoresis* 1988, **9**:288-291.
- McDermott MP, Erb HN, Natzke RP: **Predictability by somatic cell counts related to prevalence of intramammary infection within herds.** *J Dairy Sci* 1982, **65**:1535-1539.
- Laemmli UK: **Cleavage of structural proteins during the assembly of the head of bacteriophage T4.** *Nature* 1970, **227**:680-685.
- Towbin H, Staehelin T, Gordon J: **Electrophoretic transfer of proteins from polyacrylamide gels to nitrocellulose sheets: procedure and some applications.** *Proc Natl Acad Sci USA* 1979, **76**:4350-4354.
- Shevchenko A, Sunyaev S, Liska A, Bork P, Shevchenko A: **Nano-electrospray tandem mass spectrometry and sequence similarity searching for identification of proteins from organisms with unknown genomes.** *Methods Mol Biol* 2003, **211**:221-234.
- UniProtKB database. [http://www.uniprot.org/help/uniprotkb].
- Ishihama Y, Oda Y, Tabata T, Sato T, Nagasu T, Rappsilber J, Mann M: **Exponentially modified protein abundance index (emPAI) for estimation**

- of absolute protein amount in proteomics by the number of sequenced peptides per protein. *Mol Cell Proteomics* 2005, **4**:1265-1272.
22. Dupierriis V, Masselon C, Court M, Kieffer-Jaquinod S, Bruley C: **A toolbox for validation of mass spectrometry peptides identification and generation of database: IRMa.** *Bioinformatics* 2009, **25**:1980-1981.
 23. Barinov A, Loux V, Hammani A, Nicolas P, Langella P, Ehrlich D, Maguin E, van de GM: **Prediction of surface exposed proteins in *Streptococcus pyogenes*, with a potential application to other Gram-positive bacteria.** *Proteomics* 2009, **9**:61-73.
 24. Yamaguchi T, Nishifuji K, Sasaki M, Fudaba Y, Aepfelbacher M, Takata T, Ohara M, Komatsuzawa H, Amagai M, Sugai M: **Identification of the *Staphylococcus aureus* etd pathogenicity island which encodes a novel exfoliative toxin, ETD, and EDIN-B.** *Infect Immun* 2002, **70**:5835-5845.
 25. Nickerson NN, Prasad L, Jacob L, Delbaere LT, McGavin MJ: **Activation of the SspA serine protease zymogen of *Staphylococcus aureus* proceeds through unique variations of a trypsinogen-like mechanism and is dependent on both autocatalytic and metalloprotease-specific processing.** *J Biol Chem* 2007, **282**:34129-34138.
 26. Burvenich C, Van MV, Mehrzad J, ez-Fraile A, Duchateau L: **Severity of *E. coli* mastitis is mainly determined by cow factors.** *Vet Res* 2003, **34**:521-564.
 27. Haveri M, Roslof A, Rantala L, Pyorala S: **Virulence genes of bovine *Staphylococcus aureus* from persistent and nonpersistent intramammary infections with different clinical characteristics.** *J Appl Microbiol* 2007, **103**:993-1000.
 28. Middleton JR, Fox LK: **Influence of *Staphylococcus aureus* strain on mammary quarter milk production.** *Vet Rec* 2002, **150**:411-413.
 29. Rainard P, Gilbert FB: **Les mammites dues à *Staphylococcus aureus*.** In *Staphylococcus aureus*. Edited by: Le Loir Y, Gautier M. Paris: Tec 2010:211-232.
 30. Sutra L, Poutrel B: **Virulence factors involved in the pathogenesis of bovine intramammary infections due to *Staphylococcus aureus*.** *J Med Microbiol* 1994, **40**:79-89.
 31. Notebaert S, Demon D, Vanden BT, Vandenabeele P, Meyer E: **Inflammatory mediators in *Escherichia coli*-induced mastitis in mice.** *Comp Immunol Microbiol Infect Dis* 2008, **31**:551-565.
 32. Svirshchevskaya EV, Shevchenko MA, Huet D, Femenia F, Latge JP, Boireau P, Berkova NP: **Susceptibility of mice to invasive aspergillosis correlates with delayed cell influx into the lungs.** *Int J Immunogenet* 2009, **36**:289-299.
 33. Buzzola FR, Alvarez LP, Tuchscherer LP, Barbagelata MS, Lattar SM, Calvino L, Sordelli DO: **Differential abilities of capsulated and noncapsulated *Staphylococcus aureus* isolates from diverse agr groups to invade mammary epithelial cells.** *Infect Immun* 2007, **75**:886-891.
 34. Alluwaimi AM, Leutenegger CM, Farver TB, Rossitto PV, Smith WL, Cullor JS: **The cytokine markers in *Staphylococcus aureus* mastitis of bovine mammary gland.** *J Vet Med B Infect Dis Vet Public Health* 2003, **50**:105-111.
 35. Alluwaimi AM: **The cytokines of bovine mammary gland: prospects for diagnosis and therapy.** *Res Vet Sci* 2004, **77**:211-222.
 36. Lee JW, Bannerman DD, Paape MJ, Huang MK, Zhao X: **Characterization of cytokine expression in milk somatic cells during intramammary infections with *Escherichia coli* or *Staphylococcus aureus* by real-time PCR.** *Vet Res* 2006, **37**:219-229.
 37. Oviedo-Boyso J, Cardoso-Correa BI, Cajero-Juarez M, Bravo-Patino A, Valdez-Alarcon JJ, Baizabal-Aguirre VM: **The capacity of bovine endothelial cells to eliminate intracellular *Staphylococcus aureus* and *Staphylococcus epidermidis* is increased by the proinflammatory cytokines TNF-alpha and IL-1beta.** *FEMS Immunol Med Microbiol* 2008, **54**:53-59.
 38. Rainard P: ***Staphylococcus aureus* leucotoxin LukM/F' is secreted and stimulates neutralising antibody response in the course of intramammary infection.** *Vet Res* 2007, **38**:685-696.
 39. Tedeschi G, Taverna F, Negri A, Piccinini R, Nonnis S, Ronchi S, Zecconi A: **Serological proteome analysis of *Staphylococcus aureus* isolated from sub-clinical mastitis.** *Vet Microbiol* 2009, **134**:388-391.
 40. Herron-Olson L, Fitzgerald JR, Musser JM, Kapur V: **Molecular correlates of host specialization in *Staphylococcus aureus*.** *PLoS One* 2007, **2**:e1120.
 41. Hecker M, Engelmann S, Cordwell SJ: **Proteomics of *Staphylococcus aureus*—current state and future challenges.** *J Chromatogr B Analyt Technol Biomed Life Sci* 2003, **787**:179-195.
 42. Pocsfalvi G, Cacace G, Cuccurullo M, Serluca G, Sorrentino A, Schlosser G, Blaiotta G, Malorni A: **Proteomic analysis of exoproteins expressed by enterotoxigenic *Staphylococcus aureus* strains.** *Proteomics* 2008, **8**:2462-2476.
 43. Resch A, Leicht S, Saric M, Pasztor L, Jakob A, Gotz F, Nordheim A: **Comparative proteome analysis of *Staphylococcus aureus* biofilm and planktonic cells and correlation with transcriptome profiling.** *Proteomics* 2006, **6**:1867-1877.
 44. Sibbald MJ, Ziebandt AK, Engelmann S, Hecker M, de JA, Harmsen HJ, Raangs GC, Stokroos I, Arends JP, Dubois JY, van Dijk JM: **Mapping the pathways to staphylococcal pathogenesis by comparative secretomics.** *Microbiol Mol Biol Rev* 2006, **70**:755-788.
 45. Ziebandt AK, Weber H, Rudolph J, Schmid R, Hoper D, Engelmann S, Hecker M: **Extracellular proteins of *Staphylococcus aureus* and the role of SarA and sigma B.** *Proteomics* 2001, **1**:480-493.
 46. Ziebandt AK, Kusch H, Degner M, Jaglitz S, Sibbald MJ, Arends JP, Chlebowicz MA, Albrecht D, Pantucek R, Doskar J, Ziebuhr W, Bröker BM, Hecker M, van Dijk JM, Engelmann S: **Proteomics uncovers extreme heterogeneity in the *Staphylococcus aureus* exoproteome due to genomic plasticity and variant gene regulation.** *Proteomics* 2010, **10**:1634-1644.
 47. Gatlin CL, Pieper R, Huang ST, Mongodin E, Gebregeorgis E, Parmar PP, Clark DJ, Alami H, Papazisi L, Fleischmann RD, Gill SR, Peterson SN: **Proteomic profiling of cell envelope-associated proteins from *Staphylococcus aureus*.** *Proteomics* 2006, **6**:1530-1549.
 48. Jones RC, Deck J, Edmondson RD, Hart ME: **Relative quantitative comparisons of the extracellular protein profiles of *Staphylococcus aureus* UAMS-1 and its *sarA*, *agr*, and *sarAagr* regulatory mutants using one-dimensional polyacrylamide gel electrophoresis and nanocapillary liquid chromatography coupled with tandem mass spectrometry.** *J Bacteriol* 2008, **190**:5265-5278.
 49. Pancholi V, Chhatwal GS: **Housekeeping enzymes as virulence factors for pathogens.** *Int J Med Microbiol* 2003, **293**:391-401.
 50. Antikainen J, Kuparinen V, Lahteenmaki K, Korhonen TK: **Enolases from Gram-positive bacterial pathogens and commensal lactobacilli share functional similarity in virulence-associated traits.** *FEMS Immunol Med Microbiol* 2007, **51**:526-534.
 51. Lee EY, Choi DY, Kim DK, Kim JW, Park JO, Kim S, Kim SH, Desiderio DM, Kim YK, Kim KP, Gho YS: **Gram-positive bacteria produce membrane vesicles: proteomics-based characterization of *Staphylococcus aureus*-derived membrane vesicles.** *Proteomics* 2009, **9**:5425-5436.
 52. Glowalla E, Tosetti B, Kronke M, Krut O: **Proteomics-Based Identification of Anchorless Cell Wall Proteins as Vaccine Candidates against *Staphylococcus aureus*.** *Infect Immun* 2009, **77**:2719-2729.
 53. Stranger-Jones YK, Bae T, Schneewind O: **Vaccine assembly from surface proteins of *Staphylococcus aureus*.** *Proc Natl Acad Sci USA* 2006, **103**:16942-16947.
 54. Kuklin NA, Clark DJ, Secore S, Cook J, Cope LD, McNeely T, Noble L, Brown MJ, Zorman JK, Wang XM, Pancari G, Fan H, Isett K, Burgess B, Bryan J, Brownlow M, George H, Meinz M, Liddell ME, Kelly R, Schultz L, Montgomery D, Onishi J, Losada M, Martin M, Ebert T, Tan CY, Schofield TL, Nagy E, Meineke A, et al: **A novel *Staphylococcus aureus* vaccine: Iron surface determinant B induces rapid antibody responses in rhesus macaques and specific increased survival in a murine *S. aureus* sepsis model.** *Infect Immun* 2006, **74**:2215-2223.
 55. Perez-Casal J, Prysliak T, Kerro-Dego O, Potter AA: **Immune responses to a *Staphylococcus aureus* GapC/B chimera and its potential use as a component of a vaccine for *S. aureus* mastitis.** *Vet Immunol Immunopathol* 2006, **109**:85-97.
 56. Ragle BE, Bubeck WJ: **Anti-alpha-hemolysin monoclonal antibodies mediate protection against *Staphylococcus aureus* pneumonia.** *Infect Immun* 2009, **77**:2712-2718.
 57. Holtfreter S, Thi THN, Wertheim H, Steil L, Kusch H, Quoc PT, Engelmann S, Hecker M, Volker U, van Belkum A, Bröker BM: **Human Immune Proteome in Experimental Colonization with *Staphylococcus aureus*.** *Clin Vaccine Immunol* 2009, **16**:1607-1614.
 58. Rainard P: ***Staphylococcus aureus* leucotoxin LukM/F' is secreted and stimulates neutralising antibody response in the course of intramammary infection.** *Vet Res* 2007, **38**:685-696.
 59. Visai L, Yanagisawa N, Josefsson E, Tarkowski A, Pezzali I, Rooijackers SH, Foster TJ, Speziale P: **Immune evasion by *Staphylococcus aureus* conferred by iron-regulated surface determinant protein IsdH.** *Microbiology* 2009, **155**:667-679.

60. Uziel O, Borovok I, Schreiber R, Cohen G, Aharonowitz Y: **Transcriptional regulation of the *Staphylococcus aureus* thioredoxin and thioredoxin reductase genes in response to oxygen and disulfide stress.** *J Bacteriol* 2004, **186**:326-334.
61. Haupt K, Reuter M, van den Elsen J, Burman J, Halbich S, Richter J, Skerka C, Zipfel PF: **The *Staphylococcus aureus* Protein Sbi Acts as a Complement Inhibitor and Forms a Tripartite Complex with Host Complement Factor H and C3b.** *PLoS Pathog* 2008, **4**:e1000250.
62. Massimi I, Park E, Rice K, Muller-Esterl W, Sauder D, McGavin MJ: **Identification of a novel maturation mechanism and restricted substrate specificity for the SspB cysteine protease of *Staphylococcus aureus*.** *J Biol Chem* 2002, **277**:41770-41777.
63. Oscarsson J, Tegmark-Wisell K, Arvidson S: **Coordinated and differential control of aureolysin (*aur*) and serine protease (*sspA*) transcription in *Staphylococcus aureus* by *sarA*, *rot* and *agr* (RNAIII).** *Int J Med Microbiol* 2006, **296**:365-380.
64. Kubica M, Guzik K, Koziel J, Zarebski M, Richter W, Gajkowska B, Golda A, iag-Gudowska A, Brix K, Shaw L, Foster T, Potempa J: **A potential new pathway for *Staphylococcus aureus* dissemination: the silent survival of *S. aureus* phagocytosed by human monocyte-derived macrophages.** *PLoS One* 2008, **3**:e1409.
65. Beaufort N, Wojciechowski P, Sommerhoff CP, Szymid G, Dubin G, Eick S, Kellermann J, Schmitt M, Potempa J, Magdolen V: **The human fibrinolytic system is a target for the staphylococcal metalloprotease aureolysin.** *Biochem J* 2008, **410**:157-165.
66. Kulig P, Zabel BA, Dubin G, Allen SJ, Ohyama T, Potempa J, Handel TM, Butcher EC, Cichy J: ***Staphylococcus aureus*-derived staphopain B, a potent cysteine protease activator of plasma chemerin.** *J Immunol* 2007, **178**:3713-3720.
67. Smagur J, Guzik K, Magiera L, Bzowska M, Gruca M, Thogersen IB, Enghild JJ, Potempa J: **A New Pathway of Staphylococcal Pathogenesis: Apoptosis-Like Death Induced by Staphopain B in Human Neutrophils and Monocytes.** *J Innate Immun* 2009, **1**:98-108.
68. Shaw L, Golonka E, Potempa J, Foster SJ: **The role and regulation of the extracellular proteases of *Staphylococcus aureus*.** *Microbiology* 2004, **150**:217-228.
69. Coulter SN, Schwan WR, Ng EY, Langhorne MH, Ritchie HD, Westbrock-Wadman S, Hufnagle WO, Folger KR, Bayer AS, Stover CK: ***Staphylococcus aureus* genetic loci impacting growth and survival in multiple infection environments.** *Mol Microbiol* 1998, **30**:393-404.
70. Wang CH, Lin CY, Luo YH, Tsai PJ, Lin YS, Lin MT, Chuang WJ, Liu CC, Wu JJ: **Effects of oligopeptide permease in group a streptococcal infection.** *Infect Immun* 2005, **73**:2881-2890.
71. Samen U, Gottschalk B, Eikmanns BJ, Reinscheid DJ: **Relevance of peptide uptake systems to the physiology and virulence of *Streptococcus agalactiae*.** *J Bacteriol* 2004, **186**:1398-1408.
72. Borezee E, Pellegrini E, Berche P: **OppA of *Listeria monocytogenes*, an oligopeptide-binding protein required for bacterial growth at low temperature and involved in intracellular survival.** *Infect Immun* 2000, **68**:7069-7077.
73. Kroh HK, Panizzi P, Bock PE: **Von Willebrand factor-binding protein is a hysteretic conformational activator of prothrombin.** *Proc Natl Acad Sci USA* 2009, **106**:7786-7791.
74. Schonheyder F, Thomsen SB: **On the Prothrombin Content in Milk.** *Acta Physiol Scand* 1942, **4**:309-316.
75. Clarke SR, Brummell KJ, Horsmanns MJ, McDowell PW, Mohamad SA, Stapleton MR, Acevedo J, Read RC, Day NP, Peacock SJ, Mond JJ, Kokai-Kun JF, Foster SJ: **Identification of in vivo-expressed antigens of *Staphylococcus aureus* and their use in vaccinations for protection against nasal carriage.** *J Infect Dis* 2006, **193**:1098-1108.
76. Etz H, Minh DB, Henics T, Dryla A, Winkler B, Triska C, Boyd AP, Sollner J, Schmidt W, von Ahlsen U, Buschle M, Gill SR, Kolonay J, Khalak H, Fraser CM, von Gabain A, Nagy E, Meinke A: **Identification of in vivo expressed vaccine candidate antigens from *Staphylococcus aureus*.** *Proc Natl Acad Sci USA* 2002, **99**:6573-6578.
77. Lorenz U, Ohlsen K, Karch H, Hecker M, Thiede A, Hacker J: **Human antibody response during sepsis against targets expressed by methicillin resistant *Staphylococcus aureus*.** *FEMS Immunol Med Microbiol* 2000, **29**:145-153.
78. Stapleton MR, Horsburgh MJ, Hayhurst EJ, Wright L, Jonsson IM, Tarkowski A, Kokai-Kun JF, Mond JJ, Foster SJ: **Characterization of IsaA and SceD, two putative lytic transglycosylases of *Staphylococcus aureus*.** *J Bacteriol* 2007, **189**:7316-7325.
79. Ahrens P, Andresen LO: **Cloning and sequence analysis of genes encoding *Staphylococcus hyicus* exfoliative toxin types A, B, C, and D.** *J Bacteriol* 2004, **186**:1833-1837.
80. Yamasaki O, Tristan A, Yamaguchi T, Sugai M, Lina G, Bes M, Vandenesch F, Etienne J: **Distribution of the exfoliative toxin D gene in clinical *Staphylococcus aureus* isolates in France.** *Clin Microbiol Infect* 2006, **12**:585-588.
81. Bergonier D, de CR, Rupp R, Lagriffoul G, Berthelot X: **Mastitis of dairy small ruminants.** *Vet Res* 2003, **34**:689-716.
82. Zhang A, Xie C, Chen H, Jin M: **Identification of immunogenic cell wall-associated proteins of *Streptococcus suis* serotype 2.** *Proteomics* 2008, **8**:3506-3515.
83. Kimmel B, Bosserhoff A, Frank R, Gross R, Goebel W, Beier D: **Identification of immunodominant antigens from *Helicobacter pylori* and evaluation of their reactivities with sera from patients with different gastroduodenal pathologies.** *Infect Immun* 2000, **68**:915-920.
84. Mendum TA, Newcombe J, McNeilly CL, McFadden J: **Towards the immunoproteome of *Neisseria meningitidis*.** *PLoS One* 2009, **4**:e5940.
85. Chitlaru T, Gat O, Grosfeld H, Inbar I, Gozlan Y, Shafferman A: **Identification of in vivo-expressed immunogenic proteins by serological proteome analysis of the *Bacillus anthracis* secretome.** *Infect Immun* 2007, **75**:2841-2852.
86. Sellman BR, Howell AP, Kelly-Boyd C, Baker SM: **Identification of immunogenic and serum binding proteins of *Staphylococcus epidermidis*.** *Infect Immun* 2005, **73**:6591-6600.
87. Pitarch A, Nombela C, Gil C: **Proteomic profiling of serologic response to *Candida albicans* during host-commensal and host-pathogen interactions.** *Methods Mol Biol* 2009, **470**:369-411.
88. Peng SY, Lee KM, Tsaihong JC, Cheng PC, Fan PC: **Evaluation of recombinant fructose-1,6-bisphosphate aldolase ELISA test for the diagnosis of *Schistosoma japonicum* in water buffaloes.** *Res Vet Sci* 2008, **85**:527-533.
89. Geng H, Zhu L, Yuan Y, Zhang W, Li W, Wang J, Zheng Y, Wei K, Cao W, Wang H, Jiang Y: **Identification and characterization of novel immunogenic proteins of *Streptococcus suis* serotype 2.** *J Proteome Res* 2008, **7**:4132-4142.
90. Sekeyova Z, Kowalczywska M, Decloquement P, Pelletier N, Spitalaska E, Raoult D: **Identification of protein candidates for the serodiagnosis of Q fever endocarditis by an immunoproteomic approach.** *Eur J Clin Microbiol Infect Dis* 2009, **28**:287-295.
91. Dai Y, Zhu Y, Harn DA, Wang X, Tang J, Zhao S, Lu F, Guan X: **DNA vaccination by electroporation and boosting with recombinant proteins enhances the efficacy of DNA vaccines for *Schistosomiasis japonica*.** *Clin Vaccine Immunol* 2009, **16**:1796-1803.
92. Da'dara AA, Li YS, Xiong T, Zhou J, Williams GM, McManus DP, Feng Z, Yu XL, Gray DJ, Harn DA: **DNA-based vaccines protect against zoonotic schistosomiasis in water buffalo.** *Vaccine* 2008, **26**:3617-3625.
93. Brady RA, Leid JG, Camper AK, Costerton JW, Shirliff ME: **Identification of *Staphylococcus aureus* proteins recognized by the antibody-mediated immune response to a biofilm infection.** *Infect Immun* 2006, **74**:3415-3426.
94. Bercic RL, Slavec B, Lavric M, Narat M, Bidovec A, Dovc P, Benčina D: **Identification of major immunogenic proteins of *Mycoplasma synoviae* isolates.** *Vet Microbiol* 2008, **127**:147-154.
95. Thompson HC, Snyder IS: **Protection against pneumococcal infection by a ribosomal preparation.** *Infect Immun* 1971, **3**:16-23.
96. Hajem N, Weintraub A, Nimtz M, Romling U, Pahlson C: **A study of the antigenicity of *Rickettsia helvetica* proteins using two-dimensional gel electrophoresis.** *APMIS* 2009, **117**:253-262.
97. John M, Kudva IT, Griffin RW, Dodson AW, McManus B, Krastins B, Sarracino D, Progulsk-Fox A, Hillman JD, Handfield M, Tarr PI, Calderwood SB: **Use of in vivo-induced antigen technology for identification of *Escherichia coli* O157:H7 proteins expressed during human infection.** *Infect Immun* 2005, **73**:2665-2679.
98. Brakstad OG, Maeland JA: **Generation and characterization of monoclonal antibodies against *Staphylococcus aureus* thermonuclease.** *APMIS* 1989, **97**:166-174.
99. Havlasova J, Hernychova L, Brychta M, Hubalek M, Lenco J, Larsson P, Lundqvist M, Forsman M, Krocova Z, Stulik J, Macela A: **Proteomic analysis**

- of anti-*Francisella tularensis* LVS antibody response in murine model of tularemia. *Proteomics* 2005, **5**:2090-2103.
100. Schaffer AC, Lee JC: **Vaccination and passive immunisation against *Staphylococcus aureus***. *Int J Antimicrob Agents* 2008, **32**(Suppl 1):S71-S78.
 101. Tempelmans Plat-Sinnige MJ, Verkaik NJ, van Wamel WJ, de GN, Acton DS, van BA: **Induction of *Staphylococcus aureus*-specific IgA and agglutination potency in milk of cows by mucosal immunization**. *Vaccine* 2009, **27**:4001-4009.
 102. Verkaik NJ, Boelens HA, de Vogel CP, Tavakol M, Bode LG, Verbrugh HA, van BA, van Wamel WJ: **Heterogeneity of the humoral immune response following *Staphylococcus aureus* bacteremia**. *Eur J Clin Microbiol Infect Dis* 2010, **29**:509-518.
 103. Mackey-Lawrence NM, Potter DE, Cerca N, Jefferson KK: ***Staphylococcus aureus* immunodominant surface antigen B is a cell-surface associated nucleic acid binding protein**. *BMC Microbiol* 2009, **9**:61.
 104. Heinrichs JH, Gatlin LE, Kunsch C, Choi GH, Hanson MS: **Identification and characterization of SirA, an iron-regulated protein from *Staphylococcus aureus***. *J Bacteriol* 1999, **181**:1436-1443.
 105. Ster C, Beaudoin F, Diarra MS, Jacques M, Malouin F, Lacasse P: **Evaluation of some *Staphylococcus aureus* iron-regulated proteins as vaccine targets**. *Vet Immunol Immunopathol* 2010, **136**:311-318.
 106. Samukawa T, Yamanaka N, Hollingshead S, Klingman K, Faden H: **Immune responses to specific antigens of *Streptococcus pneumoniae* and *Moraxella catarrhalis* in the respiratory tract**. *Infect Immun* 2000, **68**:1569-1573.
 107. Christensson B, Hedstrom SA, Kronvall G: **Antibody response to alpha- and beta-hemolysin from *Staphylococcus aureus* in patients with staphylococcal infections and in normals**. *Acta Pathol Microbiol Immunol Scand B* 1983, **91**:351-356.
 108. Holtfreter S, Kolata J, Broker BM: **Towards the immune proteome of *Staphylococcus aureus* - The anti-*S. aureus* antibody response**. *Int J Med Microbiol* 2010, **300**:176-192.
 109. Verkaik NJ, Dauwalder O, Antri K, Boubekri I, de Vogel CP, Badiou C, Bes M, Vandenesch F, Tazir M, Hooijkaas H, Verbrugh HA, van Belkum A, Etienne J, Lina G, Ramdani-Bougoussa N, van Wamel WJ: **Immunogenicity of toxins during *Staphylococcus aureus* infection**. *Clin Infect Dis* 2010, **50**:61-68.
 110. Rainard P, Corrales JC, Barrio MB, Cochard T, Poutrel B: **Leucotoxic activities of *Staphylococcus aureus* strains isolated from cows, ewes, and goats with mastitis: importance of LukM/LukF^{PV} leukotoxin**. *Clin Diagn Lab Immunol* 2003, **10**:272-277.
 111. Weichhart T, Horky M, Sollner J, Gangl S, Henics T, Nagy E, Meinke A, von GA, Fraser CM, Gill SR, Hafner M, von Ahsen U: **Functional selection of vaccine candidate peptides from *Staphylococcus aureus* whole-genome expression libraries in vitro**. *Infect Immun* 2003, **71**:4633-4641.
 112. Dryla A, Prustomersky S, Gelbmann D, Hanner M, Bettinger E, Kocsis B, Kustos T, Henics T, Meinke A, Nagy E: **Comparison of antibody repertoires against *Staphylococcus aureus* in healthy individuals and in acutely infected patients**. *Clin Diagn Lab Immunol* 2005, **12**:387-398.

doi:10.1186/1297-9716-42-35

Cite this article as: Le Maréchal et al.: *Staphylococcus aureus* seroproteomes discriminate ruminant isolates causing mild or severe mastitis. *Veterinary Research* 2011 **42**:35.

Submit your next manuscript to BioMed Central
and take full advantage of:

- Convenient online submission
- Thorough peer review
- No space constraints or color figure charges
- Immediate publication on acceptance
- Inclusion in PubMed, CAS, Scopus and Google Scholar
- Research which is freely available for redistribution

Submit your manuscript at
www.biomedcentral.com/submit

