



HAL
open science

8000 years of vegetation history in the northern Iberian Peninsula inferred from the palaeoenvironmental study of Zalama ombrotrophic bog (Basque-Cantabrian Mountains, Spain)

Sebastián Pérez Díaz, J.A. Lopez Saez, Xabier Pontevedra-Pombal, Martin Souto-Souto, Didier Galop

► To cite this version:

Sebastián Pérez Díaz, J.A. Lopez Saez, Xabier Pontevedra-Pombal, Martin Souto-Souto, Didier Galop. 8000 years of vegetation history in the northern Iberian Peninsula inferred from the palaeoenvironmental study of Zalama ombrotrophic bog (Basque-Cantabrian Mountains, Spain). *Boreas*, 2016, 45 (4), pp.658-672. 10.1111/bor.12182 . hal-01450967

HAL Id: hal-01450967

<https://hal.science/hal-01450967v1>

Submitted on 31 Jan 2017

HAL is a multi-disciplinary open access archive for the deposit and dissemination of scientific research documents, whether they are published or not. The documents may come from teaching and research institutions in France or abroad, or from public or private research centers.

L'archive ouverte pluridisciplinaire **HAL**, est destinée au dépôt et à la diffusion de documents scientifiques de niveau recherche, publiés ou non, émanant des établissements d'enseignement et de recherche français ou étrangers, des laboratoires publics ou privés.



8000 years of vegetation history in the northern Iberian Peninsula inferred from the palaeoenvironmental study of the Zalama ombrotrophic bog (Basque-Cantabrian Mountains, Spain)

SEBASTIÁN PÉREZ-DÍAZ, JOSÉ ANTONIO LÓPEZ-SÁEZ, XABIER PONTEVEDRA-POMBAL, MARTÍN SOUTO-SOUTO AND DIDIER GALOP

BOREAS



Pérez-Díaz, S., López-Sáez, J. A., Pontevedra-Pombal, X., Souto-Souto, M. & Galop, D.: 8000 years of vegetation history in the northern Iberian Peninsula inferred from the palaeoenvironmental study of the Zalama ombrotrophic bog (Basque-Cantabrian Mountains, Spain). *Boreas*. 10.1111/bor.12182. ISSN 0300-9483.

This paper focuses on pollen, spores, non-pollen palynomorphs (NPPs) and certain geochemical elements from the ombrotrophic blanket bog of Zalama (Basque-Cantabrian Mountains, northern Iberian Peninsula), with the support of a robust chronology based on 17 AMS ^{14}C dates. The main results related to the last 8000 years show that, during the early middle Holocene, pines and deciduous forests were the most extensive tree formations. At the beginning of the succession, pines reach 44%, showing regional presence, whereas after 7600 cal. a BP, deciduous forests were particularly abundant. From c. 6500 cal. a BP the pollen diagram constructed from our samples shows the first anthropogenic evidence, linked with the new economic practices related to the Neolithic of the Basque-Cantabrian Mountains. From 3300 cal. a BP the expansion of *Fagus sylvatica* is particularly clear, and has since then become one of the dominant forest species in this region. We also discuss the Holocene evolution of other noteworthy plant communities in southwestern Europe, such as *Taxus baccata*, *Juglans* and shrublands.

Sebastián Pérez-Díaz (sebas.perezdiaz@gmail.com), Dpto. de Geografía, Prehistoria y Arqueología, Facultad de Letras, Universidad del País Vasco Francisco Tomás y Valiente, sh. Apdo. 2111, 01006 Vitoria-Gasteiz, Spain; José Antonio López-Sáez, Grupo de Investigación Arqueobiología, Instituto de Historia, Centro de Ciencias Humanas y Sociales, Consejo Superior de Investigaciones Científicas (CSIC), Albasanz 26-28, 28037 Madrid, Spain; Xabier Pontevedra-Pombal, Dpto. de Edafología y Química Agrícola, Universidad de Santiago de Compostela, Lópe Gómez de Marzoa sh. Campus Vida, 15782 Santiago de Compostela, Spain; Martín Souto-Souto, Dpto. De Botánica, Universidad de Santiago de Compostela, Lópe Gómez de Marzoa sh. Campus Vida, 15782 Santiago de Compostela, Spain; Didier Galop, GEODE, UMR 5602 CNRS Université Toulouse 2 Jean Jaurès 5, Allées A. Machado-31058, Toulouse Cedex 9, France; received 8th May 2015, accepted 3rd March 2016.

Peatlands have long been studied in the scientific literature from two basic perspectives: (i) their function as 'islands of biodiversity', i.e. refuges of particularly vulnerable species, and (ii) their use as palaeoenvironmental archives. These natural deposits can be interpreted from many different viewpoints, very interesting for a proper understanding of past climatic, biotic and cultural records (Barber 1993; Lappalainen 1996; Chambers & Daniell 2010; de Jong *et al.* 2010). In this sense, ombrotrophic bogs, such as the Zalama peat bog presented in this work, are especially noteworthy deposits. Their water regime and nutrient supply are derived directly and exclusively from precipitation (Lindsay 1995). As a result, they are oligotrophic and usually highly acidic environments, ensuring good overall preservation of organic matter (Pontevedra-Pombal *et al.* 2006, 2013). These characteristics are critical in making ombrotrophic peatlands excellent palaeoenvironmental archives, which yield data on global climate changes as well as on the impacts of mining, agriculture and livestock.

The area surrounding the Zalama peat bog, in the Basque-Cantabrian Mountains (northern Iberian Peninsula) is also of biogeographical interest because it acts as the border between the Eurosiberian and Mediterranean regions. The existence of several mountain barriers parallel to the coastline limits the progres-

sive arrival of Atlantic moisture, favouring complex and rich floristic variability (Aseginolaza *et al.* 1996). Therefore, this mountain region currently has a rich variety of landscapes, where floristic elements typical of the moist conditions of the Atlantic area coexist with species better adapted to the continental climate on the northern Spanish plateau. It is also a relatively unknown region from the palaeoenvironmental standpoint owing to the scarcity of palaeobotanical studies (Iriarte 2008; Pérez-Díaz *et al.* 2015). The only palynological research conducted in the area to date was carried out in the nearby peat bog of Los Tornos (Peñalba 1989, 1994; Muñoz-Sobrino *et al.* 2005). Some archaeobotanical studies (pollen, charcoal, seeds) have also been carried out at archaeological sites located in the bottom of the valleys, such as El Mirón (Iriarte 2012; Peña-Chocarro 2012; Zapata 2012), Cotobasero (Zapata 2002), La Boheriza (Iriarte 1995) and La Cabaña (Iriarte 1999). In short, all these factors, i.e. its nature as an ombrotrophic bog, its geographical location and the scarcity of palaeobotanical research in this area, make the Zalama peat bog extremely valuable for evaluating the landscape, climate conditions and human pressure during the Holocene.

In this paper, we discuss the Holocene evolution of the vegetation in the Basque-Cantabrian region over the last 8000 years. For this, we present a high-resolu-

tion study of pollen grains, spores and non-pollen palynomorphs, as well as geochemical data of trace elements from the ombrotrophic bog of Zalama (Basque-Cantabrian Mountains, northern Iberian Peninsula), this being probably the most southwesterly recorded example of a blanket bog in Europe (Heras & Infante 2005).

Study area

The study site is the peat bog of Zalama (latitude 43°8'6"N, longitude 3°24'35"W, altitude 1330 m a.s.l.), located in the vicinity of a peak of the same name, in the southwesternmost corner of the Basque-Cantabrian Mountains (Ordunte Mountains, Basque Country, northern Iberian Peninsula). It is located on a gentle, domed hill on the watershed between the Cantabrian and Mediterranean hydrographic areas (Fig. 1A). This blanket bog is located near the main summit and is unaffected by water movement in streams or overland flow. The peat rests directly on periglacial deposits with quartzite fragments and therefore there is no other organic soil horizon (Fig. 1B; Heras & Infante 2004). Originally covering an area of 5 ha, it has been badly affected by fires used by cattle breeders to control pastures (Heras & Infante 2005). Today the burnt area is occupied by bare rock and mineral soil. The blanket bog still covers 2.5 ha (Heras & Infante 2004), and today is the subject of a major restoration project (Aguirre-Pascual 2011). The predominant geological bedrock is made up of Lower and Upper Cretaceous sedimentary rocks (Middle and Upper Albian–Lower Cenomanian) and sandstones with abundant quartz grains (Garrote *et al.* 1992).

The peat bog is located in an Atlantic climatic area. The nearest weather station (Cerroja) is located 10 km to the north. In 2014 the measurements indicated an average yearly precipitation of 1341 mm for a total of 185 rainy days, and a mean annual temperature of 13.7 °C (Euskalmet 2011). However, this station is located at a much lower elevation (677 m a.s.l.); at higher elevations rainfall is presumably heavier. It is also important to note that mist is frequently present on the nearby peaks even in summer, owing to the orographic barrier of the Basque-Cantabrian Mountains to the moist air from the Bay of Biscay. This constant moisture throughout the year is essential for the good preservation of the peat bog.

The current vegetation of the peat bog is composed of a dense peaty moorland of purely ombrotrophic characteristics, dominated by *Calluna vulgaris*, with *Erica tetralix*, *E. cinerea*, *Molinia caerulea*, *Daboecia cantabrica*, *Sphagnum rubellum*, *Juncus squarrosus*, *Ulex gallii* and *Eriophorum vaginatum* (Uribe-Etxebarria *et al.* 2006). There are also communities of *Pteridium aquilinum*, a heliophilous fern that sometimes grows on bogs (Fig. 1C). In the vicinity, the current

forests are restricted to lower elevations (Bariego & Gastón 2002), with acidophilous beech forests composed of *Fagus sylvatica*, *Ilex aquifolium*, *Vaccinium myrtillus*, *Deschampsia flexuosa*, *Blechnum spicant*, *Veronica officinalis* and *Euphorbia dulcis* on the northern slopes. The southern slopes, where the insolation is greater, have *Quercus pyrenaica* forests with *Pseudoarrhenatherum longifolium*, *Pteridium aquilinum*, *Arenaria montana* and *Potentilla erecta*, as well as scattered Scots pine (*Pinus sylvestris*) stands on the sunny slopes (Aseginolaza *et al.* 1996).

Material and methods

Coring and sampling

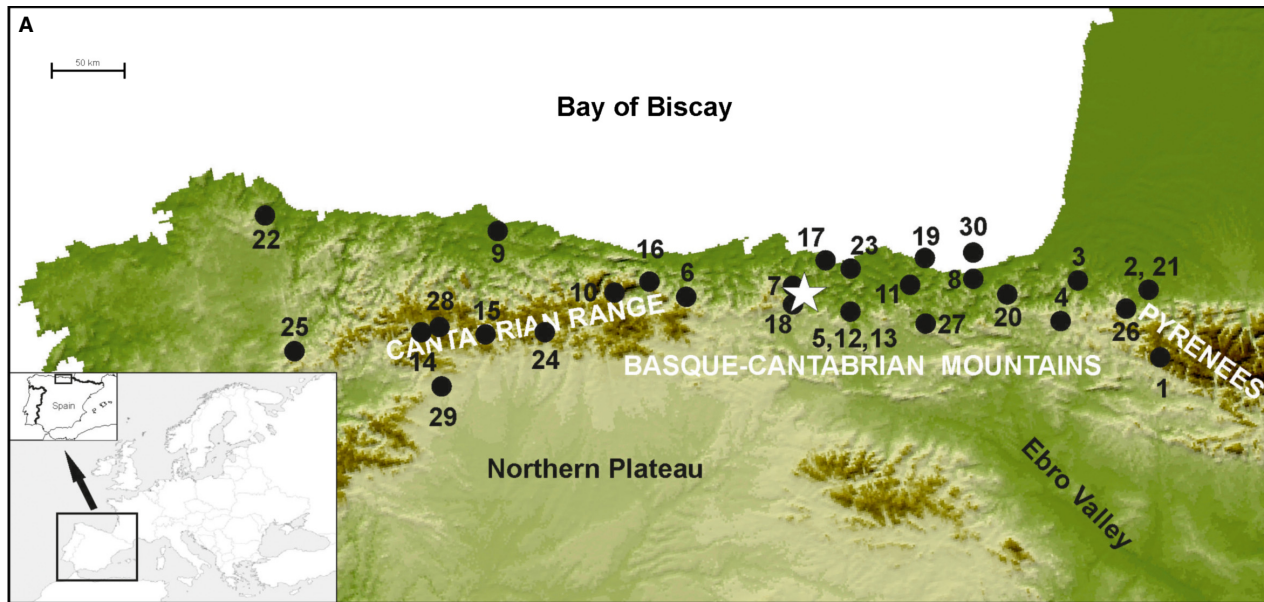
The core was taken using a Wardenaar corer (10×10×100 cm; Wardenaar 1987) for the first 100 cm and a Russian peat sampler (GYK type, 50 cm length; 5 cm in diameter) for the rest. The coring point was located in the centre of the peat bog, from where a core with a total length of 232 cm was extracted (Table 1). Contiguous sampling was performed in the uppermost 30 cm, where samples were taken every centimetre. The rest of the core samples were taken every 2 cm. Two surface samples were also taken at the peat–vegetation interface. A total of 131 samples was analysed.

Chronology

Selected peat samples were sent to Angström Laboratory of Uppsala University (Sweden) and Centro Nacional de Aceleradores of Sevilla University (Spain) for radiocarbon dating, in order to establish patterns of bog development. Chronology was based on 17 accelerator mass spectrometry (AMS) radiocarbon dates on peat material (Table 2). The dates were calibrated using the CALIB 7.1 radiocarbon calibration program with the IntCal13 curve (Reimer *et al.* 2013). An age/depth model (Fig. 2) was produced using CLAM 2.2 software (Blaauw 2010), applying a smooth spline solution. Confidence intervals of the calibrations and the age/depth model were calculated at 95% (2σ) with 1000 iterations. The calendar scale was cal. a BP.

Pollen and NPP analyses

A total of 131 samples (each 1 cm³ in volume) was used for the palynological study. All of the palynological samples were chemically treated following Girard & Renault-Miskovsky (1969), with the samples being concentrated in a high-density Thoulet solution (Goeury & de Beaulieu 1979). Small aliquots of the residues were mounted in glycerine jelly, sealed with *Histolaque*. Pollen and spores were identified according to Fægri & Iversen (1989), Moore *et al.* (1991) and Reille (1999). Non-pollen palynomorphs were identified according



- | | | |
|---|--|--|
| 1. Aizpea (Zapata 2001) | 11. Kobaederra (Zapata 2002) | 21. Occabe (Cugny 2011) |
| 2. Artxilondo (Galop <i>et al.</i> 2004) | 12. La Boheriza (Iriarte 1995) | 22. Pena Veira (Ramil & Aira 1993) |
| 3. Atxuri (Peñalba 1989; Pérez-Díaz <i>et al.</i> 2015) | 13. La Cabaña (Iriarte 1999) | 23. Pico Ramos (Zapata 2002) |
| 4. Belate (Peñalba 1989) | 14. La Mata (Jalut <i>et al.</i> 2010) | 24. Pinar de Lillo (García-Antón <i>et al.</i> 1997) |
| 5. Cotobasero (Zapata 2002) | 15. Lago de Ajo (Allen <i>et al.</i> 1996) | 25. Pozo do Carballal (Muñoz-Sobrino <i>et al.</i> 1997) |
| 6. Cueto de la Avellanosa (Mariscal 1983) | 16. Los Canes (Arias 2005) | 26. Quinto Real (Galop <i>et al.</i> 2004) |
| 7. El Mirón (Iriarte 2012; Zapata 2012) | 17. Los Gitanos (Ontañón <i>et al.</i> 2013) | 27. Saldropo (Peñalba 1989) |
| 8. Herriko Barra (Iriarte <i>et al.</i> 2004) | 18. Los Tornos (Peñalba 1989) | 28. Vega de Viejos (Rubiales <i>et al.</i> 2008) |
| 9. Monte Areo (López-Merino <i>et al.</i> 2010) | 19. Lumentxa (Zapata 2002) | 29. Xan de Llamas (Morales-Molino <i>et al.</i> 2011) |
| 10. Lago Enol (Moreno <i>et al.</i> 2011) | 20. Marizulo (Alday & Mujika 1999) | 30. KS05/10 (Da Silva-Oliveira 2012) |



Fig. 1. Study area. A. Map indicating the location of the peat bog of Zalama (white star) and the other sites mentioned in the text (black points). B. Image of the peat bog of Zalama (Patxi Heras). C. Image of *Pteridium aquilinum*. D. Aerial view of the peat bog of Zalama.

to van Geel (1978, 2001, 2006); van Geel *et al.* (1981, 1989, 2003) and Cugny (2011). In each sample a minimum of 500 terrestrial pollen grains was counted. Cyperaceae, aquatics and spores were excluded from the pollen sum to avoid over-representation (Wright & Patten 1963). A pollen diagram (Fig. 3) was produced using the TILIA 2.0 and TGVIEW programs (Grimm 1992, 2004). Local pollen assemblage zones (LPAZs) were constructed on the basis of agglomerative constrained cluster analysis of incremental sum of squares (CONISS) with square-root-transformed percentage data (Grimm 1987).

Elemental geochemistry

Mineral contributions to bogs can be assessed using reference lithogenic elements present in rocks and soils. It can be assumed that variations in the trace elements in the ombrotrophic peat profile reasonably reflect fluctuations in the deposition of atmospheric soil dust (ASD) (Shotyk 1996; Pontevedra-Pombal *et al.* 2013). Titanium (Ti) and vanadium (V) are such elements. The total content of these elements was determined in the peat as a proxy of soil erosion. We performed a statistical normalization of the element content (Z-scores,

Table 1. Morphostratigraphy of the peat section of Zalama peat bog. VP = von Post scale (von Post 1937); IP = sodium pyrophosphate index (Lynn *et al.* 1974; Soil Survey Staff 1975).

Depth (cm)	Morphostratigraphical features	VP	IP
0–6	Vegetation–peat interface	H1	–
6–12	Brown, dry and compact peat	H2	Fibric
12–18	Brown to dark brown, dry and compact peat	H4	Hemic–Fibric
18–32	Reddish brown peat	H2	Fibric
32–48	Dark brown peat	H5	Sapric–Hemic
48–86	Blackish brown peat. Charcoal fragments	H7	Sapric
86–94	Brown to dark brown peat	H4	Hemic–Fibric
94–112	Dark brown peat	H5	Hemic
112–120	Dark brown peat. Wood fragments	H6–7	Sapric
120–160	Reddish fibrous peat with Sphagnum remains	H2	Fibric
160–224	Grey-black peat	H7–8	Sapric
224–232	Grey-black peat with very fine quartz sands Minerogenic phase	H9	Sapric

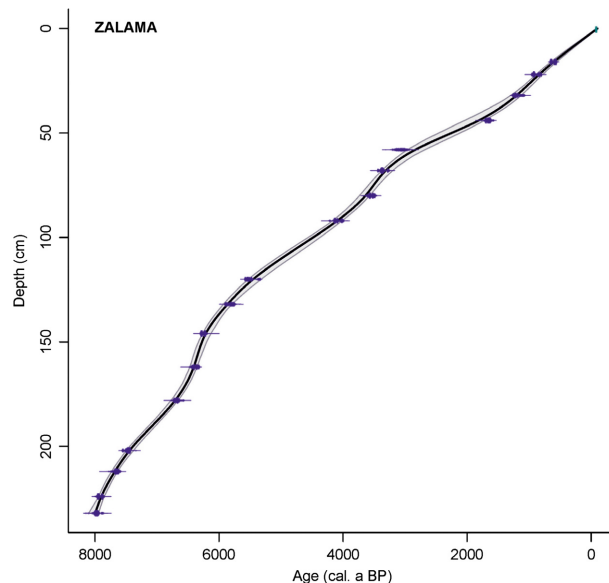


Fig. 2. Age-depth model of Zalama peat bog.

calculated by dividing the difference between the element content of each sample and the average value of the whole core by the standard deviation), which minimizes differences due to local effects (i.e. due to differences in the geological composition) and results in a relative scale of variation in enrichment to identify periods of elevated values.

In Teflon vessels an aliquot of 0.300 g of each sample was digested (180 °C – 5–1000 W and 180 °C – 10–1000 W) by microwave (Milestone, Ethos1 plus) using a mixture of 8 mL 69% HNO₃ (PlasmaPURE-Scp Science) and 2 mL of 48% HF (Sigma Aldrich). Due to the high organic matter content, the addition of H₂O₂ was also required. Then, the digested sample

was flushed in a final volume of 25 mL with 2.5% H₃BO₃ (Sigma Aldrich). The sample was filtered and stored in plastic tubes in the cold and dark until analysed by quadrupole inductively coupled plasma-mass emission spectrometry (ICP-MS) using a Varian 820-MS. Ten per cent of the samples were analysed in duplicate. All calibration standards were prepared as samples from multi-element solutions. For both elements, the correlation coefficients of the calibration lines were equal to or greater than 0.999. All measured elements were above the detection limits, whereas the blank sample values were below. To assess the precision and accuracy of analytical procedures and to check the calibration, we used five internationally certified reference materials (CRMs). Element recoveries

Table 2. AMS-radiocarbon data with 2σ range of calibration from Zalama peat bog.

Sample	Material	Depth interval (cm)	Lab. code	Age (¹⁴ C a BP)	Age range (¹⁴ C cal. a BP)	Calendar age a BP; average probability
ZAL 10	Peat	15–16	CNA626	635±30	553–665	599
ZAL 16	Peat	21–22	CNA627	990±40	796–963	902
ZAL 26	Peat	31–32	Ua-41646	1245±34	1073–1272	1199
ZAL 34	Peat	42–44	CNA628	1755±30	1565–1736	1661
ZAL 41	Peat	56–58	CNA629	2920±50	2925–3212	3065
ZAL 46	Peat	66–68	Ua-41647	3142±34	3324–3447	3368
ZAL 52	Peat	78–80	Ua-41648	3321±31	3475–3633	3548
ZAL 58	Peat	90–92	CNA630	3740±30	3984–4157	4097
ZAL 72	Peat	118–120	Ua-41650	4757±41	5328–5589	5511
ZAL 78	Peat	130–132	Ua-41651	5076±40	5734–5914	5817
ZAL 85	Peat	144–146	Ua-41652	5454±38	6190–6306	6251
ZAL 93	Peat	160–162	CNA631	5615±35	6309–6466	6387
ZAL 101	Peat	176–178	Ua-41653	5858±38	6597–6753	6680
ZAL 113	Peat	200–202	Ua-41654	6561±47	7420–7566	7470
ZAL 118	Peat	210–212	Ua-41655	6826±47	7582–7750	7658
ZAL 124	Peat	222–224	CNA632	7095±35	7846–7981	7932
ZAL 128	Peat	230–232	Ua-35895	7150±50	7852–8053	7973

Table 3. V and Ti values from the peat bog of Zalama.

Certificated Reference Material	N	V (mg kg ⁻¹)		Ti (%)	
		Certified	Measured	Certified	Measured
NIST – Montana Soil (2710a)	3	82±9 ¹	86±3	0.311±0.007	0.307±0.053
NIST – Coal Fly Ash (1633c)	3	286.2±7.9	283±5.4	0.724±0.030	0.726±0.0410
NIST – Coal (1632b)	3	14 ¹	17±1.5	0.045±0.002	0.043±0.012
NIST – Apple Leaves (1515)	3	0.26±0.03	0.25±0.08	–	–
NIST – Peach Leaves (1547)	3	0.37±0.03	0.39±0.09	–	–

¹Reference value.

in CRMs were consistent with the certified values (Table 3). CRMs and blanks were inserted into every sample batch.

Results

Pollen zonation

The pollen diagram was divided into two main LPAZs (Fig. 3) using CONISS. The subzone ZAL-1 was in turn divided into three subzones (ZAL-1a, ZAL-1b and ZAL-1c). The diagram provides insight into the vegetation history of the Basque-Cantabrian Mountains from 8000 cal. a BP to the present, both at the local and regional scale.

Zone ZAL-1a (231–166 cm depth, 7975–6463 cal. a BP). – The oldest section of this LPAZ (231–208 cm, 7975–7585 cal. a BP) shows that the main arboreal taxon was *Pinus* (44–34%). Other taxa such as deciduous *Quercus* and *Corylus* have a secondary role (<20%). *Juglans* is present with values <5%. Shrubs reached noteworthy values, mainly *Erica* and *Calluna*. Poaceae registered the lowest values in the entire sequence (<10%). Hygrophilous taxa reached 5–8% of the total pollen. The rest of this LPAZ (208–166 cm, 7585–6463 cal. a BP) was characterized by the decline of pines, which decreased to 22%. Deciduous *Quercus* and *Corylus* percentages rose to 27 and 19%, respectively. Both shrubs (*Erica* and *Calluna*) and hygrophilous taxa (Cyperaceae, monolete and trilete ferns) were substantially represented.

Zone ZAL-1b (166–106 cm, 6463–4789 cal. a BP). – This LPAZ showed lower values for tree pollen (<65%), with mesophilous taxa as the main components. Deciduous *Quercus* exceeded 26%, with *Corylus* in a secondary position (maximum values of 18%). *Pinus* decreased (13–18%) and *Juglans* reappeared. *Taxus* appeared at this LPAZ with very low values. Shrub percentages declined, with *Erica* and *Calluna* as the main taxa. Herbs increased markedly (maximum values of 32%), with Poaceae as the main taxon (22%). This area is also characterized by higher percentages of

Cardueae, Chenopodiaceae, *Dipsacus fullonum*, *Plantago major/Imedia*, *P. lanceolata* and *Urtica dioica*, but with low values (<2%). *Sordaria* reached maximum values of 2%. Hygrophilous taxa showed lower values, almost all Cyperaceae.

Zone ZAL-1c (106–50 cm, 4789–2251 cal. a BP). – This zone had increasing values of tree pollen, reaching 68%, the main contributor being *Corylus* (27%). Other mesophilous taxa that maintained a continuous and significant presence were deciduous *Quercus* (16–25%). In this LPAZ, *Fagus* occurred for the first time in the succession, at 3900 cal. a BP. Pine-pollen percentages exhibited a decreasing trend. Amongst the shrubs, *Erica* and *Calluna* were best represented. Herbs displayed a significant presence (21–31%), with Poaceae as the main taxon (maximum 25%). Cichorioideae and Fabaceae also displayed an increasing trend. From 4000 cal. a BP, Cyperaceae and monolete and trilete ferns showed an increasing trend. Amongst non-pollen palynomorphs, *Sordaria* reached a maximum peak of 5.2% at 3460 cal. a BP.

Zone ZAL-2 (50–0 cm, 2251–0 cal. a BP). – The diagram reflects several noteworthy changes in this LPAZ. Regarding tree pollen, this zone is characterized by increasing values of *Fagus*. At the beginning, its trend was upwards, and it reached high percentages (13%). However, from 900 cal. a BP its values began to decline. Here, *Corylus* and deciduous *Quercus* maintained a noteworthy presence. The shrubs showed significant growth, *Calluna* and *Erica* increasing to reach their maximum percentages in the entire succession (25 and 19%, respectively). Amongst the herbs, Poaceae continued as the main taxon, with the rest of the taxa

Table 4. Inorganic ash (%), titanium and vanadium (mg kg⁻¹) content in Zalama bog.

	Average	SD	Min.	Max.
Ash	4.60	5.55	0.80	42.46
Ti	38.98	31.64	6.90	157.17
V	2.30	1.98	0.17	11.37

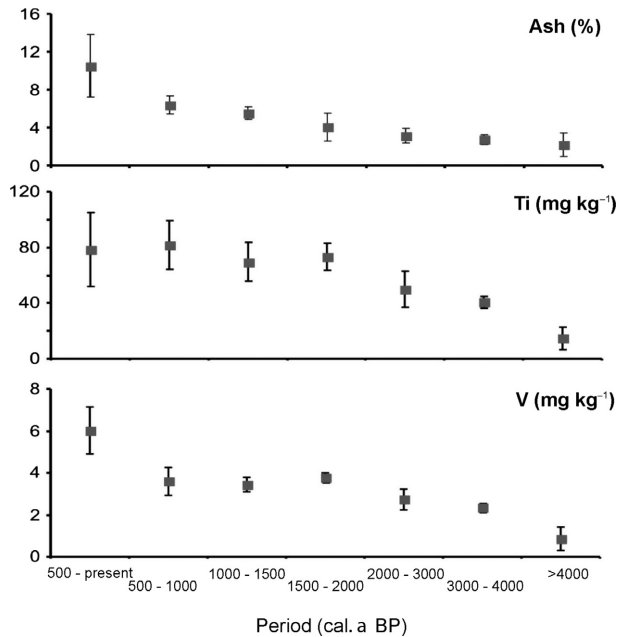


Fig. 4. Trends of atmospheric soil dust geoindicators in different periods of the development of Zalama bog. Periods: 1000 to 500 cal. a BP (Late Middle Ages); 1500 to 1000 cal. a BP (Early Middle Ages); 2000 to 1500 cal. a BP (Late Antiquity and Roman times); 3000 to 2000 cal. a BP (Late Bronze–Iron Age); 4000 to 3000 cal. a BP (Bronze Age).

registering values of <3%. Hygrophilous taxa increased their values. The main non-pollen palynomorph was *Sordaria* (4.5%).

Geochemical record

The mean, standard deviation, and maximum and minimum concentrations of Ti and V and ash content are summarized in Table 4. The values found were comparable to those found in bogs throughout Europe (Shotyk *et al.* 2002; Coggins *et al.* 2006; Cloy *et al.* 2011; Allan *et al.* 2013; Pontevedra-Pombal *et al.* 2013). Ti and V concentrations were significantly correlated ($r = 0.948$; $p < 0.0001$; $N = 129$), and both closely followed the ash content ($r = 0.837$ and 0.828 respectively; $p < 0.001$; $N = 129$), suggesting that the inorganic content of the peats was supplied by atmospheric soil dust. The ash content and concentrations of lithogenic elements (Ti and V) showed a similar trend (Fig. 4) during bog development. Background values were not exceeded until after 4000 cal. a BP. From then on, the three geoindicators gradually increased until the present. The greater increase detected in the last 500 years is attributable to greater soil erosion resulting from agricultural and industrial intensification or to climatic changes over the last millennium (Le Roux *et al.* 2004; Zaccone *et al.* 2008; Pontevedra-Pombal *et al.* 2012).

Discussion

Pines vs. deciduous forests in the Basque-Cantabrian Mountains (8000–6500 cal. a BP)

The oldest part of the Zalama pollen record shows the highest values of pine pollen of the entire succession, reaching a maximum of 44% (Fig. 3). These values are not sufficient to support the presence of large pine forests in the local environment of the site. It is known that most pines, due to high pollen production and good dispersal ability, have a larger pollen-dispersal area than do other tree species (Poska & Pidek 2010). According to studies of modern pollen rain in some well-developed pine forests, composed mainly of *Pinus sylvestris*, we infer the presence of large pine forests only when the values reach 60% (López-Sáez *et al.* 2013). Accordingly, we suggest at this time the presence of regional pine forests, or perhaps the presence of scattered trees near the site, but in any case mature forests. The significance of our data is that they indicate the presence of pine forests in the study area during the middle Holocene, although these forests do not have a phytosociological characterization in the literature of northern Spain (Rivas-Martínez 1987). One compelling question is what species of pines were present in the environment in the last eight millennia. Although we could not distinguish between them and we retrieved no macro-remains, we suggest that the vast majority of pine pollen in the core originated from *Pinus sylvestris* because it is the only species remaining today in the area surrounding the peat bog (Aseginolaza *et al.* 1996). In this area, the 19th-century authors Willkomm & Lange (1861), following the works of Planelles (1852) and Olazabal (1856), suggested the nature of relict Scots pine forests in the Cantabrian Mountains (Rubiales *et al.* 2010, 2012). Similarly, Catón-Santaren & Uribe-Etxebarria (1980), Ruiz-Urrestarazu (1989) and Aseginolaza *et al.* (1996) pointed to the presence of relict *Pinus sylvestris* forests in the Basque Country, hardly altered by anthropogenic activities in the last millennium. However, we cannot completely rule out the contribution of other pines, such as *Pinus nigra*, macrofossils of which have been found in several deposits of the northern plateau (García-Amorena *et al.* 2011).

According to the data from the Zalama peat bog, from 7585 cal. a BP, pines suffered a major setback parallel to the development of deciduous forests in the Basque-Cantabrian Mountains. The reasons for this phenomenon are probably climatic. The increased precipitation and temperature in the early middle Holocene, as detected in lake, bog, marine sediment and speleothem records in the northern Iberian Peninsula (Santos *et al.* 2000; Roucoux *et al.* 2001; Moreno *et al.* 2011; Stoll *et al.* 2013), which resulted in tree recolonization, caused an early decline of pine forests across

the northern Iberian Peninsula. This phenomenon was sharper and more sudden in the Atlantic areas of northern Iberia, as demonstrated by Muñoz-Sobrino (2001), Muñoz-Sobrino *et al.* (2007) and Rubiales *et al.* (2008, 2011, 2012). Deciduous taxa, especially *Quercus*, *Corylus* and sometimes *Betula*, in this temperate and humid climate had certain advantages that allowed them to compete successfully against coniferous formations, which survived in other areas. Pines therefore remained in such regions as the more continental, dry inland areas of the southern slopes of the Cantabrian Range, less suitable for the competition of hardwoods (Muñoz-Sobrino 2001; Rubiales *et al.* 2008, 2011; Jalut *et al.* 2010; Muñoz-Sobrino *et al.* 2012). From these times, *c.* 7585 cal. a BP, deciduous trees formed the dominant forests in the environs of the Zalama bog. Above all, hazel and deciduous *Quercus* started to play a major role in local forests. Deciduous *Quercus* had already gained terrain since the decline of pines, and became one of the dominant Holocene forest taxa. Hazel was also a foremost species in the wet mesophyllous forest of the northern Iberian Peninsula, where it formed part of mixed deciduous formations.

Notably, *Juglans* also expanded its presence at this time. It was documented at the beginning of the sequence (ZAL-1), but between 6460 and 5500 cal. a BP (lower part of ZAL-1b) it became more abundant, although still with low values (<2%). Walnut has usually been considered to have been introduced into in Western Europe during the late Holocene (Beug 1975), but research in the last few decades has provided sufficient data to demonstrate its indigenous nature in the Iberian Peninsula (Sánchez-Goñi 1988; Carrión & Sánchez 1992; Ramil-Rego *et al.* 2000; Da Silva-Oliveira 2012; Mercuri *et al.* 2013), as in the case of the Zalama pollen record. In addition, some development of riparian communities (*Alnus*, *Fraxinus* and *Salix*) can be detected in the diagram, probably at a regional scale. This, together with the increase in fern spores (monolete and trilete) and Ranunculaceae, confirms the onset of more humid conditions in this period. This pattern is not an isolated event but a regional trend, involving the entire Atlantic area of northern Spain, as has been demonstrated in other deposits, such as the Los Tornos (Peñalba 1989) and Pozo do Carballal (Muñoz-Sobrino *et al.* 1997) peat-bog pollen records. A multi-proxy climatic reconstruction for Enol Lake suggests favourable temperatures and the presence of highly stable forested landscapes at 8700–4650 cal. a BP (Moreno *et al.* 2011).

First anthropogenic evidence (c. 6500–3300 cal. a BP)

In addition to the regression of pines and the progressive advance of deciduous forests, other changes in the landscape were detected by 6500 cal. a BP in the

Zalama pollen record. The most notable are related to the first evidence of human impact *c.* 6460 cal. a BP. From then on, the pollen diagram reflects some decrease in forests and their replacement by open areas, mainly pastures of Poaceae and other synanthropic taxa (*Plantago lanceolata*, *P. major/media*, *Urtica dioica*, Caryophyllaceae, Chenopodiaceae and Cichorioideae; Fig. 3). These elements, together with the contemporaneous appearance of coprophilous fungi (*Sordaria*), suggest nearby pastures and pastoral pressure (Behre 1981; Sjögren 2006; López-Sáez & López-Merino 2007; Sjögren & Lamentowicz 2008). In addition, the presence of pyrophilous taxa (*Asphodelus albus*) and carbonicolous fungi (*Chaetomium* sp.) appears to reflect the use of fire as a tool for opening spaces by early farming communities (van Geel 1978; Kuhry 1985).

These first pieces of evidence of human impact on forests are related to early cattle raising in the Basque-Cantabrian Mountains. The northern area of the Iberian Peninsula in general and the Basque-Cantabrian Mountains in particular, have been considered marginal areas for Neolithic farming (Zapata & Peña-Chocarro 2013). However, in the last decade several archaeological findings, supported mainly by archaeobotanical research, have refuted these assumptions (Zapata 2002; Zapata *et al.* 2004). In fact, such evidence can be explained by the profusion in the region of archaeological sites precisely dated to the Early Neolithic (end of the 8th and first half of 7th millennia ago) such as Los Canes, Los Gitanos, El Mirón, Kobaederra, Pico Ramos, Lumentxa, Arenaza, Herriko Barra and Marizulo (Zapata *et al.* 1997, 2007; Alday & Mujika 1999; Arias & Altuna 1999; Zapata 2002; Iriarte *et al.* 2004; Arias 2005; Peña-Chocarro *et al.* 2005; Ontañón *et al.* 2013). This phenomenon of increased human impact is also detected in the pollen records of the nearby Monte Areo (López-Merino *et al.* 2010) and Pena Veira peat bogs (Ramil-Rego & Aira 1993). This intensity of human impact (forest clearance and burning) 6500 years ago has also been recorded in other regions of northern Spain such as Galicia, by clear signs of erosion, cumulic soil formation and the appearance of stone and charcoal lines (Kaal *et al.* 2008).

This anthropogenic evidence indicates some reduction in human activity in the Zalama peat bog between 4800 and 3400 cal. a BP, this being manifested in the interruption of continuous curves of different taxa such as *Sordaria*, *Urtica dioica*, *Plantago lanceolata*, *Dipsacus fullonum*, Cichorioideae, Chenopodiaceae and *Aster* (Fig. 3). This phase of less human pressure during the Copper and Early Bronze Ages is also reflected by the expansion of hazel, which prospered because of its pioneering nature (Costa-Tenorio *et al.* 2005), and occupied certain areas previously devoted to pasture. This episode is part of a long-term climatic

Table 5. Chronology of the expansion of *Fagus* in northern Iberia.

Region	Site	Altitude (m a.s.l.)	Date of the expansion of <i>Fagus</i>	References
Western Pyrenees	Occabe	1300	c. 4500 cal. a BP	Cugny (2011)
	Artxilondo	1100	c. 4500 cal. a BP	Galop <i>et al.</i> (2004)
	Atxuri	500	c. 4200 cal. a BP	Peñalba (1989); Pérez-Díaz <i>et al.</i> (2015)
	Quinto Real	910	c. 4000 cal. a BP	Galop <i>et al.</i> (2004)
	Belate	847	After 3335–2955 cal. a BP	Peñalba (1989)
Basque-Cantabrian Mountains	Saldropo	625	c. 4150–3645 cal. a BP	Peñalba (1989)
	Los Tornos	920	After 2965–2715 cal. a BP	Muñoz-Sobrino <i>et al.</i> (2005)
	Zalama	1330	c. 3300–3000 cal. a BP	This study
Cantabrian Region	Cueto de la Avellanosa	1320	c. 3000 cal. a BP	Mariscal (1983)
	Enol Lake	1070	c. 3500 cal. a BP	Moreno <i>et al.</i> (2011)
	Lago de Ajo	1570	c. 3200 cal. a BP	Allen <i>et al.</i> (1996)

phase of global cooling (Magny & Haas 2004), which has also been recorded in the northwestern Iberian Peninsula (Fábregas *et al.* 2003).

Another noteworthy phenomenon during this time is the beginning of the continuous curve of *Taxus*. This plant was not identified previously, but c. 6000 cal. a BP it makes its appearance in the Zalama pollen record with a continuous curve until 3000 cal. a BP. Its presence is not prominent (<2%) but its appearance at this time is remarkable. Although it is an anemophilous tree, its pollen production and dispersal rate are very low. Some studies show a meagre representation in surface samples taken near the tree, reflecting that even extremely low pollen values (1–2%) must attest to the local presence of this genus (Heim 1970; Noryskiewicz 2003). The increase in the use of yew wood is detected at some archaeological sites located in northern Iberia dated to the Early Neolithic, such as El Mirón, Aizpea and other archaeological sites in the Sierra de Cantabria (Zapata 2001, 2012; Ruiz-Alonso 2014). However, from the charcoal record alone it is difficult to determine the real significance of *Taxus* in the landscape. Indeed previous studies have shown that wood macro-remains linked to human settlements can be used only as indicators of the presence of this genus, rather than as a quantitative estimate of the prevalence of *Taxus* in the landscape (Pérez-Díaz *et al.* 2013; Uzquiano *et al.* 2014). From 6000 cal. a BP the first continuous curves of yew pollen are recorded in many deposits located in the northern Iberian Peninsula, particularly in some well-dated peat bogs such as Zalama and the nearby Los Tornos in the Basque-Cantabrian Mountains as well as in other pre-Pyrenean bogs such as Atxuri and Belate (Peñalba 1989; Pérez-Díaz *et al.* 2015). They all have continuous pollen values spanning a quite similar chronology, between 6000 and 2700 cal. a BP. In another pollen record, Saldropo (Peñalba 1989, 1994), no continuous values were recorded, but rather only isolated occurrences 5000–2750 cal. a BP.

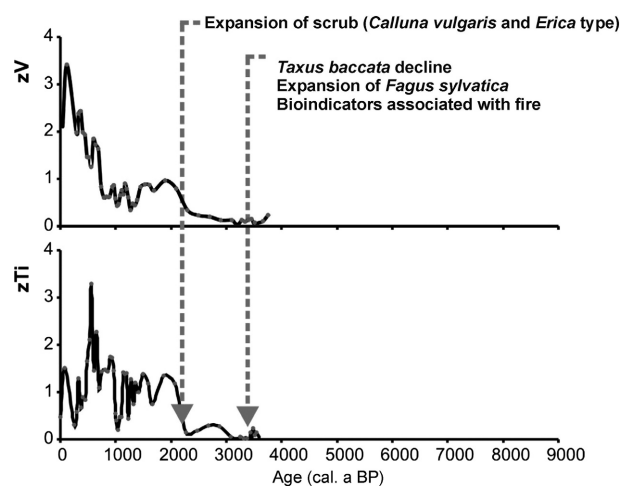


Fig. 5. Distribution of Ti and V trace elements over time and the main changes in the vegetal landscape in the late Holocene record of Zalama peat bog.

The expansion of Fagus and the current landscape status (3300 cal. a BP – present day)

In this last phase, the forests in this area underwent a major change, a transformation led by the expansion of a single taxon: *Fagus*. Its first appearance in the Zalama pollen record was dated to 3900 cal. a BP with sporadic, discontinuous and low values. However, from 3300 cal. a BP the pollen diagram shows the presence of a continuous curve of this new element, and from 3000 cal. a BP its values exceed 1%, reaching a maximum of 13% (Fig. 3). Therefore, beech forests were one of the main vegetation communities in the late Holocene of the Basque-Cantabrian Mountains and nearby regions such as the western Pyrenees and Cantabrian Region (Table 5).

It is currently accepted that the present Iberian beech forests originated from populations located in several refuge areas, according to the growing number of palaeobotanical finds in ancient chronologies and genetic studies (Martínez-Atienza & Morla-Juaristi

1992; Rodríguez-Gutián *et al.* 1996; Ramil-Rego *et al.* 2000; Costa-Tenorio *et al.* 2005; Magri *et al.* 2006; López-Merino *et al.* 2008; Magri 2008). From those regions, located mainly in the northern Iberian Peninsula, *Fagus* expanded during the late Holocene. The causes of the expansion of beech can be summarized by two main non-mutually exclusive factors: climatic and anthropogenic forcing (Galop *et al.* 2004; Bradshaw & Lindbladh 2005; Tinner & Lotter 2006; Giesecke *et al.* 2007; López-Merino *et al.* 2008; Magri 2008; Valsecchi *et al.* 2008; Muñoz-Sobrino *et al.* 2009; Bradshaw *et al.* 2010; Bradley *et al.* 2013).

Regarding the prevailing climate conditions in this area, the palynological record of Zalama indicate some increase in effective moisture by the rising values of *Corylus* and fern spores since 3300 cal. a BP. Similarly, other regional studies, such as the multi-proxy analysis of the Enol Lake mentioned above, suggest a wetter climate with more humid conditions between 4650 and 2200 cal. a BP (Moreno *et al.* 2011). Such conditions would be optimal for *Fagus* development.

The other agent perhaps involved in this process, human disturbance, caused open landscapes as a result of agropastoral activities, which could have favoured *Fagus* regeneration (Iversen 1973; Watts 1973; Björkman 1999). This would have allowed them to form mixed forests with other deciduous tree formations, and later monospecific beech forests.

In the succession of Zalama, from 3400 cal. a BP (Middle Bronze Age), the pollen diagram shows renewed anthropization, after a certain abandonment phase mentioned above (4800–3400 cal. a BP). This is manifested by some intensification in local pastoral activities and some indicators of disturbance associated with fire and overgrazing (*Chaetomium* sp. and *Asphodelus albus*). This phase coincides with lithogenic elements surpassing, for the first time in the Zalama record, their background levels, as represented by their z-scores (Fig. 5), indicating greater soil erosion. Passing this first buffering threshold may be an indirect sign of the aforementioned deforestation, but also of the intensity of the direct impact of the increased use of soil resources, coinciding with the more abundant cereal pollen and coprophilous fungi spores (Fig. 3). The beginning of these erosive crises has been detected in soils, peatlands and archaeological sites around the northwestern Iberian Peninsula (Fábregas *et al.* 2003). In the Zalama bog, the ash content and V and Ti concentrations began to increase before any remarkable sign of forest decline. This characteristic has also been detected in other studies, suggesting that lithogenic geoindicators are more sensitive to small changes in the landscape than pollen is (Hölzer & Hölzer 1998; Martínez-Cortizas *et al.* 2005). This phenomenon of increasing anthropization by 3400 cal. a BP occurred at the same time as the start of the continuous curve of *Fagus* (Fig. 3). Thus it seems probable that the expan-

sion of beech was favoured by anthropogenic disturbances, as seen in other parts of Europe such as the French Pyrenees (Galop & Jalut 1994; Jalut *et al.* 1998) or even within the Iberian Peninsula (Ramil-Rego *et al.* 2000; Martínez-Cortizas *et al.* 2005; López-Merino *et al.* 2008). The emergence of beech in the vegetation of the Basque-Cantabrian Mountains significantly affected the existing forest communities. The mixed deciduous forests dominated by *Quercus* and *Corylus* suffered a significant setback at this time because of the great competitive ability of beech in disturbed environments.

The emergence of *Fagus* coincides also with the decline of *Taxus* c. 3000–2700 cal. a BP. This decline does not appear to be due to a single factor but rather to the co-occurrence of different elements, both natural and human, which encouraged these regressive dynamics in the late Holocene. Amongst the major causes, several biological, environmental and anthropic factors can be noted: e.g. increasing anthropic pressure, competition with other tree species (mostly *Fagus*) and self-regeneration problems (Iszkulo 2010; Linares 2013). Other taxa harmed by the expansion of beech were the conifers. Pines, which displayed a regressive trend throughout the Holocene (García-Antón *et al.* 1997), also suffered a significant setback at that time, and almost disappeared from the pollen record of the Zalama peat bog (Fig. 3).

In addition to the beech forest formations, other elements now played a major role at a local scale, i.e. shrubs. From 2250 cal. a BP these thickets showed an increasing trend, with a greater representation of *Calluna vulgaris* and *Erica*. This coincidence with other notable evidence of human impact (some deforestation, anthropogenic taxa and grasslands) may indicate that this expansion of shrubs must be originated by the perturbations derived from the extension of grazing areas related to the expanding use of this pastoral setting. In the Zalama bog, this phase of retreat in trees, expansion of *Fagus* and shrubs, and in general, anthropization of the landscape is synchronous with a dramatic increase in ASD deposition (Fig. 5), which marks the beginning of intensifying soil erosion. Besides consistency with biotic markers of agriculture and grazing, this erosive phase was also coeval with the onset of iron metallurgy in the Cantabrian-Pyrenean area, the development of which led to extensive deforestation (Etxezarraga 2004). The same erosive phase was recorded in polycyclic soils and peatlands in northwest Iberia, including by dense lines of charcoal, gravel and stones, and growing palaeopollution (van Mourik 1986; Martínez-Cortizas *et al.* 2005; Costa-Casais *et al.* 2009; Pontevedra-Pombal *et al.* 2013; Silva-Sánchez *et al.* 2014). These shrublands have dominated the landscape at a local scale until the present in our study area. The main components of the landscape near the bog are currently *Calluna vulgaris*

and *Erica tetralix*. This phenomenon of heathland expansion is commonplace in the northwestern Iberian Peninsula for this period (e.g. Allen *et al.* 1996; Muñoz-Sobrino *et al.* 1997; Muñoz-Sobrino 2001; Morales-Molino *et al.* 2011, 2013; Morales-Molino & García-Antón 2014).

Conclusions

The study of the raised ombrotrophic bog of Zalama contributes to the knowledge of the evolution of the landscape in the northern Iberian Peninsula during the Holocene. The bog's location on the border between the Eurosiberian and Mediterranean regions offers an added value, reflecting the history of vegetation dynamics, climatic conditions and anthropogenic activities in a region of special biogeographical interest.

The beginning of the succession (8000 cal. a BP) is characterized by pine forests, showing the importance of pine woods in the southwestern European landscape in the early middle Holocene. The climatic conditions, more humid and temperate, triggered the retreat of *Pinus sylvestris* from this area, dated in Zalama from 7600 cal. a BP. In this context, rising temperatures and greater precipitation favoured the development of deciduous forest (oak, hazel, birch), much better adapted to the new conditions. Since then, pines have been restricted to the more continental and drier areas on the southern slopes of the area.

Palaebotanical data show that yew has been present in several places in the northern Iberian Peninsula since at least the Pleistocene. However, higher values are documented during the middle Holocene. From 8000 cal. a BP, significant use of yew wood appears in archaeological contexts. From 6000 cal. a BP, yew expands somewhat, according to its increasing presence in the pollen records. This phase lasted several millennia, until the late Holocene, when yew populations underwent a regression around 3000 cal. a BP.

The first anthropogenic disturbances are noted in the area of the Zalama peat bog during the middle Holocene. From 6460 cal. a BP, pasturelands increasingly occupy some open areas in this mountain range. The presence of anthropogenic taxa and coprophilous fungi points to the new productive economic activities related to the first crop raising and animal husbandry in the Basque-Cantabrian Mountains.

In the late Holocene the biggest change in the vegetal landscape was the expansion of beech forests. The spread of beech forests in Zalama is documented from 3300 cal. a BP, at a very similar time as in other areas of the northern Iberian Peninsula. Anthropogenic perturbations may have favoured this phenomenon.

The geochemical record of the Zalama bog suggests that the carrying capacity of the soil was definitely exceeded in the late Holocene, beginning a sequence of erosive phases contemporaneous with deforestation

and the expansion of anthropic spaces and widespread shrublands.

Acknowledgements. – S. Pérez-Díaz is currently supported by a post-doctoral research grant (Basque Government) and is part of the Research Group in Prehistory IT622-13/UFI 11-09 of the University of the Basque Country (UPV/EHU) and Project HAR2011-23716 (*Nuevos cultivos, nuevos paisajes*), funded by the Plan Nacional I+D+I. Thanks are extended to Juan Carlos Nóvoa from the Soil Science and Agricultural Chemistry Group of the University of Vigo for invaluable help with the fieldwork, and to Patxi Heras and Marta Infante from the Natural History Museum of Álava for sharing with us their knowledge on peatlands of the Basque Country. We also want to thank the two anonymous reviewers for their constructive comments.

References

- Aguirre-Pascual, E. 2011: *Plan de gestión del LIC de Ordunte*, 385 pp. Diputación Foral de Bizkaia, Bilbao.
- Alday, A. & Mujika, J. A. 1999: Nuevos datos de cronología absoluta concerniente al Holoceno Medio en el área vasca. *El Mundo indígena* (XXIV Congreso Nacional de Arqueología), 95–106. Instituto de Patrimonio Histórico, Murcia.
- Allan, M., Le Roux, G., De Vleeschouwer, F., Bindler, R., Blaauw, M., Piotrowska, N., Sikorski, J. & Fagel, N. 2013: High-resolution reconstruction of atmospheric deposition of trace metals and metalloids since AD 1400 recorded by ombrotrophic peat cores in Hautes-Fagnes, Belgium. *Environmental Pollution* 178, 381–394.
- Allen, J. R. M., Huntley, B. & Watts, W. A. 1996: The vegetation and climate of north-west Iberia over the last 14,000 yr. *Journal of Quaternary Science* 11, 125–147.
- Arias, P. 2005: Determinaciones de isótopos estables en restos humanos de la Región Cantábrica. Aportación al estudio de la dieta de las poblaciones del Mesolítico y del Neolítico. *Munibe (Antropología-Arkeología) (Homenaje a Jesús Altuna)* 57, 359–374.
- Arias, P. & Altuna, J. 1999: Nuevas dataciones absolutas para el Neolítico de la Cueva de Arenaza (Bizkaia). *Munibe (Antropología-Arkeología)* 51, 161–171.
- Aseginolaza, C., Gómez, D., Lizaur, X., Monserrat, G., Morante, G., Salaverria, M. R. & Uribe-Etxebarria, P. M. 1996: *Vegetación de la Comunidad Autónoma del País Vasco*. 362 pp. Gobierno Vasco, Vitoria-Gasteiz.
- Barber, K. E. 1993: Peatlands as scientific archives of past biodiversity. *Biodiversity and Conservation* 2, 474–489.
- Bariago, P. & Gastón, A. 2002: Catálogo florístico de los Montes de Ordunte (Burgos, España). *Ecología* 16, 97–152.
- Behre, K. E. 1981: The interpretation of anthropogenic indicators in pollen diagrams. *Pollen et Spores* 23, 225–245.
- Beug, H. J. 1975: Man as a factor in the vegetational history of the Balkan Peninsula. In Jordanov, D., Bondev, I., Kozuharov, S., Kuzmanov, B. & Palamarev, E. (eds.): *Problems of Balkan Flora and Vegetation*, 72–78. Proceedings of the First International Symposium on Balkan Flora and Vegetation, Varna, June 7–14, 1973. Publishing House of the Bulgarian Academy of Sciences, Sofia.
- Björkman, L. 1999: The establishment of *Fagus sylvatica* at the stand-scale in southern Sweden. *The Holocene* 9, 237–245.
- Blaauw, M. 2010: Methods and code for “classical” age-modelling of radiocarbon sequences. *Quaternary Geochronology* 5, 512–518.
- Bradley, L. R., Giesecke, T., Hallsall, K. & Bradshaw, R. H. W. 2013: Exploring the requirements for anthropogenic disturbance to assist the stand-scale expansion of *Fagus sylvatica* L. outside southern Scandinavia. *The Holocene* 23, 579–586.
- Bradshaw, R. H. W., Kito, N. & Giesecke, T. 2010: Factors influencing the Holocene history of *Fagus*. *Forest Ecology and Management* 259, 2204–2212.
- Bradshaw, R. H. W. & Lindbladh, M. 2005: Regional spread and stand-scale establishment of *Fagus sylvatica* and *Picea abies* in Scandinavia. *Ecology* 86, 1679–1686.

- Carrión, J. S. & Sánchez, P. 1992: Palynological data in support of the survival of walnut (*Juglans regia* L.) in the western Mediterranean area during last glacial times. *Journal of Biogeography* 19, 623–630.
- Catón-Santaren, B. & Uribe-Etxebarria, P. M. 1980: *Mapa de vegetación de Álava*, 69 pp. Diputación Foral de Álava, Vitoria-Gasteiz.
- Chambers, F. M., Daniell, J. R. G. & ACCROTELM Members 2010: Peatland archives of late-Holocene climate change in northern Europe. *Pages* 18, 4–6.
- Cloy, J. M., Farmer, J. G., Graham, M. C. & MacKenzie, A. B. 2011: Scottish peat bog records of atmospheric vanadium deposition over the past 150 years: comparison with other records and emission trends. *Journal of Environmental Monitoring* 13, 58–65.
- Coggins, A. M., Jennings, S. G. & Ebinghaus, R. 2006: Accumulation rates of the heavy metals lead, mercury and cadmium in ombrotrophic peatlands in the west of Ireland. *Atmospheric Environment* 40, 260–278.
- Costa-Casais, M., Martínez-Cortizas, A., Pontevedra-Pombal, X. & Criado-Boado, F. 2009: Analysis of landforms in geoarchaeology: Campo Lameiro, NW Iberian Peninsula. *Memoria Descrittiva della Carta Geologica d'Italia LXXXVII*, 39–51.
- Costa-Tenorio, M., Morla-Juaristi, C. & Sainz-Ollero, H. 2005: *Los bosques ibéricos. Una interpretación geobotánica*, 598 pp. Planeta, Barcelona.
- Cugny, C. 2011: *Apports des microfossiles non-polliniques à l'histoire du pastoralisme sur le versant nord pyrénéen. Entre référentiels actuels et reconstitution du passé. Vol. 1. Texte et figures/Vol. 2. Illustrations et descriptions de microfossiles*, Ph.D. thesis, University Toulouse II Le Mirail, 280 pp.
- Da Silva-Oliveira, D. 2012: *Vegetation response to Holocene climate variability in south-western Europe*. Ph.D. thesis, Universidade de Lisboa, 121 pp.
- Etxezarraga, I. 2004: Iron paleometallurgy in the Cantabric Basque Country: the haizeolak. A state of the art. *Munibe* 56, 87–104.
- EUSKALMET 2011: *Tabla de parámetros meteorológicos*. Available at: [http://www.euskalmet.euskadi.net/s07-5853x/es/contenidos/informacion/cli_2013/es_clieus/adjuntos/capitulo03\(2013\).pdf](http://www.euskalmet.euskadi.net/s07-5853x/es/contenidos/informacion/cli_2013/es_clieus/adjuntos/capitulo03(2013).pdf) (accessed 15.10.2014).
- Fábregas, R., Martínez-Cortizas, A., Blanco-Chao, R. & Chesworth, W. 2003: Environmental change and social dynamics in the second–third millennium BC in NW Iberia. *Journal of Archaeological Science* 30, 859–871.
- Fægri, K. & Iversen, J. 1989: *Text-Book of Pollen Analysis*, 328 pp. John Wiley & Sons, Chichester.
- Galop, D. & Jalut, G. 1994: Differential human impact and vegetation history in two adjacent Pyrenean valleys in the Ariège basin, southern France, from 3000 BP to present. *Vegetation History and Archaeobotany* 3, 225–244.
- Galop, D., Carozza, L., Marembert, F. & Bal, M. C., 2004: Activités agropastorales et climat durant l'Âge du Bronze dans les Pyrénées: L'état de la question à la lumière des données environnementales et archéologiques. In VVAA (eds.): *Emprises et déprises agricoles, expansion et régression des sociétés entre 3500 et 2500 BP*, 107–119. CHTS, Besançon.
- García-Amorena, I., Rubiales, J. M., Moreno-Amat, E., Iglesias-González, R. & Gómez-Manzanque, F. 2011: New macrofossil evidence of *Pinus nigra* Arnold on the Northern Iberian Meseta during the Holocene. *Review of Palaeobotany and Palynology* 163, 281–288.
- García-Antón, M., Franco-Múgica, F., Maldonado, J., Morla-Juaristi, C. & Sainz, H. 1997: New data concerning the evolution of the vegetation in Lillo pinewood (Leon, Spain). *Journal of Biogeography* 26, 929–934.
- Garrote, A., Muñoz, L., García, I. & Eguiguren, E. 1992: *Mapa Geológico del País Vasco. Hoja 60-III y 85-I (Zalama)*. Ente Vasco de la Energía. Departamento de Industria y Energía, Gobierno Vasco, Vitoria-Gasteiz.
- van Geel, B. 1978: A palaeoecological study of Holocene peat bog sections in Germany and The Netherlands. *Review of Palaeobotany and Palynology* 25, 1–120.
- van Geel, B. 2001: Non-pollen palynomorphs. In Smol, J. P., Birks, H. J. B. & Last, W. M. (eds.): *Tracking Environmental Change using Lake Sediments: Vol. 3: Terrestrial, Algal and Silicaceous Indicators*, 99–119. Kluwer Academic Publishers, Dordrecht.
- van Geel, B. 2006: Fossil ascomycetes in Quaternary deposits. *Nova Hedwigia* 82, 313–329.
- van Geel, B., Bohncke, S. J. P. & Dee, H. 1981: A palaeoecological study of an Upper Late Glacial and Holocene sequence from 'De Borchert', The Netherlands. *Review of Palaeobotany and Palynology* 31, 367–448.
- van Geel, B., Buurman, J., Brinkkemper, O., Schelvis, J., Aptroot, A., van Reenen, G. & Hakbijl, T. 2003: Environmental reconstruction of a Roman Period settlement site in Uitgeest (The Netherlands), with special reference to coprophilous fungi. *Journal of Archaeological Science* 30, 873–883.
- van Geel, B., Coope, G. R. & van der Hammen, T. 1989: Palaeoecology and stratigraphy of the Lateglacial type section at Usselo (The Netherlands). *Review of Palaeobotany and Palynology* 60, 25–129.
- Giesecke, T., Hickler, T., Kunkel, T., Sykes, M. T. & Bradshaw, R. H. W. 2007: Towards an understanding of the Holocene distribution of *Fagus sylvatica* L. *Journal of Biogeography* 34, 118–131.
- Girard, M. & Renault-Miskovsky, J. 1969: Nouvelles techniques de préparation en palynologie appliquées à trois sédiments du Quaternaire final de l'Abri Cornille (Istres, Bouches du Rhône). *Bulletin de l'Association Française pour l'Etude du Quaternaire* 1969, 275–284.
- Goeury, C. & de Beaulieu, J. L. 1979: À propos de la concentration du pollen à l'aide de la liqueur de Tholet dans les sédiments minéraux. *Pollen et Spores* 21, 239–251.
- Grimm, E. C. 1987: Coniss: a Fortran 77 program for stratigraphically constrained cluster analysis by the method of incremental sum of squares. *Computers and Geosciences* 13, 13–35.
- Grimm, E. C. 1992: *Tilia, version 2*. Illinois State Museum, Research and Collection Center, Springfield, IL.
- Grimm, E. C. 2004: *TGView*. Illinois State Museum, Springfield, IL.
- Heim, J. 1970: *Les relations entre les spectres polliniques récents et la végétation actuelle en Europe occidentale*. Ph.D. thesis, Université de Louvain, 181 pp.
- Heras, P. & Infante, M. 2004: La turbera cobertor del Zalama (Burgos-Vizcaya): un enclave único en riesgo de desaparición. *Estudios del Museo de Ciencias Naturales de Álava* 18–19, 49–57.
- Heras, P. & Infante, M. 2005: More about windmills and blanket bogs. *Zalama in Northern Spain. IMGC Newsletter* 2005, 22.
- Hölzer, A. & Hölzer, A. 1998: Silicon and titanium in peat profiles as indicators of human impact. *The Holocene* 8, 685–696.
- Iriarte, M. J. 1995: Análisis palinológico del monumento megalítico de La Boheriza 2 (Karrantza, Bizkaia). *Kobie (Serie Paleoantropología)* 22, 158–161.
- Iriarte, M. J. 1999: Análisis palinológico del dolmen de La Cabaña 4 (Karrantza, Bizkaia). *Isturitz* 10, 242–245.
- Iriarte, M. J. 2008: Vegetation landscape and the anthropization of the environment in the central sector of the Northern Iberian Peninsula: current status. *Quaternary International* 200, 66–76.
- Iriarte, M. J. 2012: The vegetational context of El Mirón Cava throughout the Early to Middle Holocene. Contributions from palynological study. In Straus, L. G. & González-Morales, M. R. (eds.): *El Miron Cave. Cantabrian Spain. The Site and its Holocene Archaeological Record*, 119–142. University of New Mexico, Albuquerque.
- Iriarte, M. J., Mujika, J. A. & Tarrío, A. 2004: Herriko Barra (Zarautz-Guipuzkoa): caracterización industrial y económica de primeros grupos de productores sur le littoral Basque. *Actas del Colloque Unité et diversité des processus de néolithisation sur la façade atlantique de l'Europe, Bulletin de la Société Préhistorique Française XXXVI* 127–136.
- Iszkulo, G. 2010: Success and failure of endangered trees species: low temperatures and low light availability affect survival and growth of European yew (*Taxus baccata* L.) seedlings. *Polish Journal of Ecology* 58, 259–271.
- Iversen, J. 1973: The development of Denmark's nature since the last glacial. *Danmarks Geologiske Undersøgelse 7-C*, 345–445.

- Jalut, G., Galop, D., Belet, J. M., Aubert, S., Esteban-Amat, A., Bouchette, A., Dedoubat, J. J. & Fontugne, M. 1998: Histoire des forêts du versant nord des Pyrénées au cours de 30000 dernières années. *Journal Botanique de la Société Botanique Française* 5, 73–84.
- Jalut, G., Turu, V., Dedoubat, J. J., Otto, T., Ezquerro, J., Fontugne, M., Belet, J. M., Bonnet, L., García de Celis, A., Redondo-Vega, J. M., Vidal-Romani, J. R. & Santos, L. 2010: Palaeoenvironmental studies in NW Iberia (Cantabrian range): vegetation history and synthetic approach of the last deglaciation phases in the western Mediterranean. *Palaeogeography, Palaeoclimatology, Palaeoecology* 297, 330–350.
- de Jong, R., Blaauw, M., Chambers, F. M., Christensen, T. R., de Vleeschouwer, F., Finsinger, W., Fronzek, S., Johansson, M., Kockfelt, U., Lamentowicz, M., Le Roux, G., Mauquoy, D., Mitchell, E. A. D., Nichols, J. E., Samaritani, E. & van Geel, B. 2010: Climate and peatlands. In Dodson, J. (ed): *Changing Climates, Earth Systems and Society*, 85–121. Springer, Dordrecht.
- Kaal, J., Costa-Casais, M., Ferro-Vázquez, C., Pontevedra-Pombal, X. & Martínez-Cortizas, A. 2008: Soil formation of “Atlantic Ringers” from NW Spain—A high resolution aluminium and iron fractionation study. *Pedosphere* 18, 441–453.
- Kuhry, P. 1985: Transgression of a raised bog across a coversand ridge originally covered with an oak-lime forest. Palaeoecological study of a Middle Holocene local vegetational succession in the Amstven (northwest Germany). *Review of Palaeobotany and Palynology* 44, 303–353.
- Lappalainen, E. 1996: *Global Peat Resources*, 161 pp. International Peat Society, Finland, Jyväskylä.
- Le Roux, G., Weiss, D., Grattan, J., Givélet, N., Krachler, M., Cheburkin, A., Rausch, N., Kober, B. & Shotyk, W. 2004: Identifying the sources and timing of ancient and medieval atmospheric lead pollution in England using a peat profile from Lindow bog, Manchester. *Journal of Environmental Monitoring* 6, 502–510.
- Linares, J. C. 2013: Shifting limiting factors for population dynamics and conservation status of the endangered English yew (*Taxus baccata* K., Taxaceae). *Forest Ecology and Management* 291, 119–127.
- Lindsay, R. 1995: *Bogs: The Ecology, Classification and Conservation of Ombrotrophic Mires*, 120 pp. Scottish Natural Heritage, Edinburgh.
- López-Merino, L., López-Sáez, J. A., Ruiz-Zapata, M. B. & Gil-García, M. J. 2008: Reconstructing the history of beech (*Fagus sylvatica* L.) in the north-western Iberian Range (Spain): from Late-Glacial refugia to the Holocene anthropic-induced forests. *Review of Palaeobotany and Palynology* 152, 58–65.
- López-Merino, L., Martínez-Cortizas, A. & López-Sáez, J. A. 2010: Early agriculture and palaeoenvironmental history in the North of the Iberian Peninsula: a multi-proxy analysis of the Monte Aro Mire (Asturias, Spain). *Journal of Archaeological Science* 37, 1978–1988.
- López-Sáez, J. A. & López-Merino, L. 2007: Coprophilous fungi as a source of information of anthropic activities during the pre-history in the Amblés Valley (Ávila, Spain): the archaeopalynological record. *Revista Española de Micropaleontología* 39, 103–116.
- López-Sáez, J. A., Sánchez-Mata, D., Alba-Sánchez, F., Abel-Schaad, D., Gavilán, R. G. & Pérez-Díaz, S. 2013: Discrimination of Scots pine forests in the Iberian Central System (*Pinus sylvestris* var. *iberica*) by means of pollen analysis. Phytosociological considerations. *Lazarus* 34, 191–208.
- Lynn, W. C., McKinzie, W. E. & Grossman, R. B. 1974: Field laboratory tests for characterization of Histosols. In Aandahl, A. R., Buol, S. W., Hill, D. E. & Bailey, H. H. (eds.): *Histosols: Their Characteristics, Classification, and Use*, 11–20. Soil Science Society of America, Special Volume 6, Madison.
- Magny, M. & Haas, J. N. 2004: A major widespread climatic change around 5300 cal. yr BP at the time of the Alpine Iceman. *Journal of Quaternary Science* 19, 423–430.
- Magri, D. 2008: Patterns of post-glacial spread and the extent of glacial refugia of European beech (*Fagus sylvatica*). *Journal of Biogeography* 35, 450–463.
- Magri, D., Vendramin, G. G., Comps, B., Dupanloup, I., Geburek, T., Gömöry, D., Latalowa, M., Litt, T., Paule, L., Roure, J. M., Tantau, I., van der Knaap, W., Petit, R. J. & de Beaulieu, J. L. 2006: A new scenario for the Quaternary history of European beech populations: palaeobotanical evidence and genetic consequences. *New Phytologist* 171, 199–221.
- Mariscal, B. 1983: Estudio polínico de la turbera del Cueto de la Avellanosa, Poblaciones (Cantabria). *Cadernos do Laboratorio Xeolóxico de Laxe: Revistade Xeoloxía Galega e do Hercínico Peninsular* 5, 205–222.
- Martínez-Atienza, F. & Morla-Juaristi, C. 1992: Aproximación a la paleoecología holocena de Fagus en la Península Ibérica a través de datos polínicos. *Investigaciones Agrarias, Sistemas y Recursos Forestales* 1, 135–145.
- Martínez-Cortizas, A., Mighall, T., Pontevedra-Pombal, X., Nóvoa-Muñoz, J. C., Peiteado-Varela, E. & Piñeiro-Rebolo, R. 2005: Linking changes in atmospheric dust deposition, vegetation change and human activities in northwest Spain during the last 5300 years. *The Holocene* 15, 698–706.
- Mercuri, A. M., Bandini, M., Florenzano, A., Montecchi, M. C. & Rattighieri, E. 2013: *Olea, Juglans and Castanea*: the OJC group as pollen evidence of the development of human-induced environments in the Italian peninsula. *Quaternary International* 303, 24–42.
- Moore, P. D., Webb, J. A. & Collinson, M. E. 1991: *Pollen Analysis*, 216 pp. Blackwell Scientific Publications, London.
- Morales-Molino, C. & García-Antón, M. 2014: Vegetation and fire history since the last glacial maximum in an inland area of the western Mediterranean basin (Northern Iberian Plateau, NW Spain). *Quaternary Research* 81, 63–77.
- Morales-Molino, C., García-Antón, M. & Morla, C. 2011: Late Holocene vegetation dynamics on an Atlantic-Mediterranean mountain in NW Iberia. *Palaeogeography, Palaeoclimatology, Palaeoecology* 302, 323–337.
- Morales-Molino, C., García-Antón, M., Postigo-Mijarra, J. M. & Morla, C. 2013: Holocene vegetation, fire and climate interactions on the westernmost fringe of the Mediterranean Basin. *Quaternary Science Reviews* 59, 5–17.
- Moreno, A., López-Merino, L., Leira, M., Marco-Barba, J., González-Sampériz, P., Valero-Garcés, B. L., López-Sáez, J. A., Santos, L., Mata, P. & Ito, E. 2011: Revealing the last 13,500 years of environmental history from the multiproxy record of a mountain lake (Lago Enol, northern Iberian Peninsula). *Journal of Paleolimnology* 46, 327–349.
- van Mourik, J. M. 1986: Pollen profiles of slope deposits in the Galician area (N.W. Spain). *Nederlandse Geografische Studies* 12, 1–171.
- Muñoz-Sobrino, C. 2001: *Cambio climático y dinámica del paisaje en las montañas del noroeste de la península*. Ph.D. thesis, Universidad de Santiago de Compostela, 311 pp.
- Muñoz-Sobrino, C., Ramil-Rego, P. & Gomez-Orellana, L. 2007: Late Würm and early Holocene in the mountains of northwest Iberia: biostratigraphy, chronology and tree colonization. *Vegetation History and Archaeobotany* 16, 223–240.
- Muñoz-Sobrino, C., Ramil-Rego, P., Gómez-Orellana, L. & Díaz-Varela, R. A. 2005: Palynological data on major Holocene climatic events in NW Iberia. *Boreas* 34, 381–400.
- Muñoz-Sobrino, C., Ramil-Rego, P., Gómez-Orellana, L., Ferreiro de Costa, J. & Díaz-Varela, R. A. 2009: Climatic and human effects on the post-glacial dynamics of *Fagus sylvatica* L. in NW Iberia. *Plant Ecology* 203, 317–340.
- Muñoz-Sobrino, C., Ramil-Rego, P. & Rodríguez-Gutián, M. 1997: Upland vegetation in the north-west Iberian Peninsula after the last glaciation: forest history and deforestation dynamics. *Vegetation History and Archaeobotany* 6, 215–233.
- Muñoz-Sobrino, C., Suárez-Pérez, F. J., Nava-Fernández, H. S., Fernández-Casado, M. A., Gómez-Orellana, L., Rodríguez-Gutián, M. A., Fernández-Prieto, J. A. & Ramil-Rego, P. 2012: Environmental changes in the westernmost Cantabrian Range during the postglacial period: the Pena Velosa (Muniellos, Asturias) pollen record. In Campar Almeida, A., Bettencourt, A. M. S., Moura, D., Monteiro-Rodrigues, S. & Caetano Alves, M. I. (eds.):

- Environmental Changes and Human Interaction along the Western Atlantic Edge*, 79–94. Associação Portuguesa para o Estudo do Quaternário, Coimbra.
- Noryskiewicz, A. M. 2003: Modern pollen deposition in the *Taxus* reserve in the Wierzchlas (northern Poland). Abstract, 16th INQUA Congress, Reno, Nevada
- Olazabal, L. 1856: *Suelo, clima, cultivo agrario y forestal de la provincia de Vizcaya*, 221 pp. Memorias de la Academia de las Ciencias, Madrid.
- Ontañón, R., Altuna, J., Álvarez-Fernández, E., Chauvin, A., Cubas, M., Fernández, R., Gruet, Y., Iriarte, M. J., López-Dóriga, I., Mariezkurrena, K. & Zapata, L. 2013: Contribution à l'étude de la neolithisation dans la région Cantabrique. La grotte de Los Gitanos (Cantabrie, Espagne). In Daire, M. Y., Dupont, C., Baudry, A., Billard, C., Large, J. M., Lespez, L., Normand, E. & Scarre, C. (eds): *Anciens peuplements littoraux et relations Homme/Milieu sur les Côtes de L'Europe Atlantique*, 383–390. BAR International Series, Oxford.
- Peña-Chocarro, L. 2012: Neolithic, Chalcolithic and Bronze Age plant remains from El Mirón cave. Evidence on the first farming communities in the Cantabrian Region. In Straus, L. G. & González-Morales, M. R. (eds.): *El Miron cave. Cantabrian Spain. The Site and its Holocene Archaeological Record*, 148–173. University of New Mexico, Albuquerque.
- Peña-Chocarro, L., Zapata, L., Iriarte, M. J., González-Morales, M. R. & Straus, L. G. 2005: The oldest agriculture in northern Atlantic Spain: new evidence from El Mirón Cave (Ramales de la Victoria, Cantabria). *Journal of Archaeological Science* 32, 579–587.
- Peñalba, M. C. 1989: *Dynamique de végétation tardiglaciaire et Holocène du centre-nord de l'Espagne d'après l'analyse pollinique*. Ph.D. thesis, Universidad d'Aix, 165 pp.
- Peñalba, M. C. 1994: The history of the Holocene vegetation in northern Spain from pollen analysis. *Journal of Ecology* 82, 815–832.
- Pérez-Díaz, S., López-Sáez, J. A. & Galop, D. 2015: Vegetation dynamics and human activity in the Western Pyrenean Region during the Holocene. *Quaternary International* 364, 65–77.
- Pérez-Díaz, S., López-Sáez, J. A., Ruiz-Alonso, M., Zapata, L. & Abel-Schaad, D. 2013: Holocene history of *Taxus baccata* in the Basque Mountains (Northern Iberian Peninsula). *Lazaroa* 34, 29–41.
- Planelles, J. 1852: *Ensayo de una flora fanerogámica gallega ampliada con indicaciones acerca de los usos medicinales de las especies que describen*, 452 pp. Santiago de Compostela.
- Pontevedra-Pombal, X., Mighall, T. M., Nóvoa-Muñoz, J. C., Peiteado-Varela, E., Rodríguez-Racedo, J., García-Rodeja, E. & Martínez-Cortizas, A. 2013: Five thousand years of atmospheric Ni, Zn, As, and Cd deposition recorded in bogs from NW Iberia: prehistoric and historic anthropogenic contributions. *Journal of Archaeological Science* 40, 764–777.
- Pontevedra-Pombal, X., Nóvoa-Muñoz, J. C., García-Rodeja, E. & Martínez-Cortizas, A. 2006: Mountain mires from Galicia (NW Spain). In Martini, I. P., Martínez-Cortizas, A. & Chesworth, W. (eds): *Peatlands: Evolution and Records of Environmental and Climatic Changes*, 83–108. Elsevier, Dordrecht.
- Pontevedra-Pombal, X., Rey-Salgueiro, L., García-Falcón, M., Martínez-Carballo, E., Simal-Gándara, J. & Martínez-Cortizas, A. 2012: Pre-industrial accumulation of anthropogenic polycyclic aromatic hydrocarbons found in a blanket bog of the Iberian Peninsula. *Environmental Research* 116, 36–43.
- Poska, A. & Pidek, I. A. 2010: Pollen dispersal and deposition characteristics of *Abies alba*, *Fagus sylvatica* and *Pinus sylvestris*, Roztocze region (SE Poland). *Vegetation, History and Archaeobotany* 19, 91–101.
- von Post, L. 1937: The geographical survey of Irish bogs. *Irish Naturalist's Journal* 6, 210–227.
- Ramil-Rego, P. & Aira, M. J. 1993: Estudio palinológico de la turbera de Pena Veira (Lugo). *Anales del Jardín Botánico de Madrid* 51, 111–122.
- Ramil-Rego, P., Rodríguez-Gutián, M. A., Muñoz-Sobrino, C. & Gómez-Orellana, L. 2000: Some considerations about the post-glacial history and recent distribution of *Fagus sylvatica* L. in the NW Iberian Peninsula. *Folia Geobotánica* 35, 241–271.
- Reille, M. 1999: *Pollen et spores d'Europe et d'Afrique du Nord*, 535 pp. Laboratoire de Botanique Historique et Palynologie, Marseille.
- Reimer, P. J., Bard, E., Bayliss, A., Beck, J. W., Blackwell, P. G., Bronk, Ramsey, C., Buck, C. E., Cheng, H., Edwards, R. L., Friedrich, M., Grootes, P. M., Guilderson, T. P., Haflidason, H., Hajdas, I., Hatté, C., Heaton, T. J., Hoffmann, D. L., Hogg, A. G., Hughen, K. A., Kaiser, K. F., Kromer, B., Manning, S. W., Niu, M., Reimer, R. W., Richards, D. A., Scott, E. M., Southon, J. R., Staff, R. A., Turney, C. S. M. & van der Plicht, J. 2013: Intcal13 and marine13 radiocarbon age calibration curves 0–50,000 years cal BP. *Radiocarbon* 55, 1869–1887.
- Rivas-Martínez, S. 1987. *Memoria del MAPA de Series de Vegetación de España, escala 1:400.000*, 268 pp. M.A.P.A. & I.C.O.N.A., Madrid.
- Rodríguez-Gutián, M. A., Ramil-Rego, P., Muñoz-Sobrino, C. & Gómez-Orellana, L. 1996: Consideraciones sobre la migración holocena de *Fagus* a través de la Via Pirenaico-Cantábrica. In Ramil-Rego, P., Fernández-Rodríguez, C. & Rodríguez-Gutián, M. A. (eds). *Biogeografía Pleistocena-Holocena de la Península Ibérica*, 98–111. Xunta de Galicia, Santiago de Compostela.
- Roucoux, K. H., Shackleton, N. J., de Abreu, L., Schönfeld, J. & Tzedakis, P. C. 2001: Combined marine proxy and pollen analyses reveal rapid Iberian vegetation response to north Atlantic millennial-scale climate oscillations. *Quaternary Research* 56, 128–132.
- Rubiales, J. M., Ezquerro, J., Muñoz-Sobrino, C., Génova, M. M., Gil, L., Ramil-Rego, P. & Gómez-Manzaneque, F. 2012: Holocene distribution of woody taxa at the westernmost limit of the Circum-boreal/Mediterranean boundary: evidence from wood remains. *Quaternary Science Reviews* 33, 74–86.
- Rubiales, J. M., García-Amorena, I., García-Álvarez, S. & Gómez-Manzaneque, F. 2008: The Late Holocene extinction of *Pinus sylvestris* in the Western Cantabrian Range (Spain). *Journal of Biogeography* 35, 1840–1850.
- Rubiales, J. M., García-Amorena, I., Hernández, L., Génova, M., Martínez, F., Gómez-Manzaneque, F. & Morla-Juaristi, C. 2010: Late Quaternary dynamics of pinewoods in the Iberian Mountains. *Review of Palaeobotany and Palynology* 162, 476–491.
- Rubiales, J. M., Morla-Juaristi, C., Gómez-Manzaneque, F., García-Álvarez, S., García Amorena, I., Génova, M., Martínez-García, F. & Postigo, J. M. 2011: La historia holocena de los pinares montanos en la Cordillera Cantábrica. In Ezquerro, F. J. & Reym, E. (eds): *Evolución del paisaje vegetal y el uso del fuego en la Cordillera Cantábrica*, 110–124. Fundación Patrimonio Natural de Castilla y León, León.
- Ruiz-Alonso, M. 2014: *Evolución y explotación de los recursos vegetales desde el tardiglaciario en la vertiente mediterránea del País Vasco: Datos antracológicos*, 589 pp. Universidad del País Vasco, Vitoria-Gasteiz.
- Ruiz-Urrestarazu, E. 1989: Pinares reliquia en el monte Gorbea. *Sustrai* 14, 66–67.
- Sánchez-Goñi, M. F. 1988: A propos de la présence du pollen de *Castanea* et *Juglans* dans les sédiments archéologiques würmiens anciens du Pays Basque espagnol. *Travaux de la Section Scientifique et Technique Institut de Pondichéry XXV*, 73–82.
- Santos, L., Vidal-Romaní, J. R. & Jalut, G. 2000: History of vegetation during the Holocene in the Courel and Queixa Sierras, Galicia, northwest Iberian Peninsula. *Journal of Quaternary Science* 15, 621–632.
- Shotyk, W. 1996: Peat bog archives of atmospheric metal deposition: geochemical evaluation of peat profiles, natural variations in metal concentrations, and metal enrichment factors. *Environmental Reviews* 6, 149–183.
- Shotyk, W., Krachler, M., Martínez-Cortizas, A., Cheburkin, A. K. & Emons, H. 2002: A peat bog record of natural, pre-anthropogenic enrichments of trace elements in atmospheric aerosols since 12,370 ¹⁴C yr BP, and their variation with Holocene climate change. *Earth and Planetary Science Letters* 199, 21–37.

- Silva-Sánchez, N., Martínez-Cortizas, A. & López-Merino, L. 2014: Linking forest cover, soil erosion and mire hydrology to late-Holocene human activity and climate in NW Spain. *The Holocene* 24, 714–725.
- Sjögren, P. 2006: The development of pastures woodland in the southwest Swiss Jura Mountains over 2000 years, based on the three adjacent peat profiles. *The Holocene* 16, 210–223.
- Sjögren, P. & Lamentowicz, M. 2008: Human and climatic impact on mires: a case study of les Amburnex mire, Swiss Jura Mountains. *Vegetation History and Archaeobotany* 17, 185–197.
- Soil Survey Staff. 1975: *Soil Taxonomy. USDA-SCS Agricultural Handbook 436*, 754 pp. US Government, Washington, DC.
- Stoll, H. M., Moreno, A., Mendez-Vicente, A., Gonzalez-Lemos, S., Jimenez-Sanchez, M., Dominguez-Cuesta, M. J., Edwards, R. L., Cheng, H. & Wang, X. 2013: Paleoclimate and growth rates of speleothems in the northwestern Iberian Peninsula over the last two glacial cycles. *Quaternary Research* 80, 284–290.
- Tinner, W. & Lotter, A. F. 2006: Holocene expansion of *Fagus sylvatica* and *Abies alba* in central Europe. Where are we after eight decades of debate? *Quaternary Science Reviews* 25, 526–549.
- Uribe-Etxebarria, P. M., Zorrakin, I., Campos, J. A. & Domínguez, A. 2006: *Flora vascular amenazada en la Comunidad Autónoma del País Vasco*, 389 pp. Gobierno Vasco, Vitoria-Gasteiz.
- Uzquiano, P., Allue, E., Antolín, F., Burjachs, F., Picornell, L. L., Pique, R. & Zapata, L. 2014: All about yew: on the trail of *Taxus baccata* in southern Europe by means of integrated palaeobotanical and archaeobotanical studies. *Vegetation History and Archaeobotany* 24, 229–247.
- Valsecchi, V., Finsinger, W., Tinner, W. & Amman, B. 2008: Testing the influence of climate, human impact and fire on the Holocene population expansion of *Fagus sylvatica* in the southern Prealps. *The Holocene* 18, 603–614.
- Wardenaar, E. P. C. 1987: A new hand tool for cutting peat profiles. *Canadian Journal of Botany* 65, 1172–1173.
- Watts, W. A. 1973: Rates of change and stability in vegetation in the perspective of long periods of time. In Birks, H. J. B. & West, R. G. (eds): *Quaternary Plant Ecology*, 195–206. Blackwell, Oxford.
- Willkomm, H. M. & Lange, J. M. C. 1861: *Prodromus Florae Hispanicae Seu Synopsis Methodica Omnium Plantarum in Hispania Sponte Nascentium Vel Frequentis Culturarum Quae Innotuerunt I*, 356 pp. Nabu Press, Stuttgart.
- Wright, H. E. & Patten, H. J. 1963: The pollen sum. *Pollen et Spores* 5, 445–450.
- Zaccone, C., Cocozza, C., Cheburkin, A. K., Shoty, W. & Miano, T. M. 2008: Distribution of As, Cr, Ni, Rb, Ti and Zr between peat and its humic fraction along an undisturbed ombrotrophic bog profile (NW Switzerland). *Applied Geochemistry* 23, 25–33.
- Zapata, L. 2001: El uso de los recursos vegetales en Aizpea (Navarra, Pirineo Occidental): la alimentación, el combustible y el bosque. In Barandiarán-Maestu, I. & Cava, A. (eds.): *Cazadores-recolectores en el Pirineo navarro: el sitio de Aizpea entre 8.000 y 6.000 BP*, 325–359. Universidad del País Vasco, Vitoria-Gasteiz.
- Zapata, L. 2002: Origen de la agricultura en el País Vasco y transformaciones en el paisaje: Análisis de los restos vegetales arqueológicos, 223 pp. Kobie (Anejo 4). Diputación Foral de Bizkaia, Bilbao.
- Zapata, L. 2012: Holocene wood charcoal from El Mirón cave. Vegetation and wood use. In Straus, L. G. & González-Morales, M. R. (eds.): *El Miron cave. Cantabrian Spain. The Site and its Holocene Archaeological Record*, 174–196. University of New Mexico, Albuquerque.
- Zapata, L. & Peña-Chocarro, L. 2013: Crops and people. Diffusion of farming in South-Western Europe. In Blasco, E., Francalecci, P., Nocentini, A. & Tondaa, G. (eds.): *Iberia e Sardegna*, 277–288. Le Monier Università, Cagliari.
- Zapata, L., Ibáñez, J. J. & González, J. E. 1997: El yacimiento de la cueva de Kobaederra (Oma, Kortezubi, Bizkaia). Resultados preliminares de las campañas de excavación 1995–97. *Munibe (Antropología-Arkeología)* 49, 51–63.
- Zapata, L., Milner, N. J. & Roselló, E. 2007: Pico Ramos cave shell midden: the Mesolithic-Neolithic transition by the Bay of Biscay. In Milner, N., Craig, O. E. & Bailey, G. N. (eds): *Shell Middens in Atlantic Europe*, 150–157. Oxbow Books, Oxford.
- Zapata, L., Peña-Chocarro, L., Pérez-Jordá, G. & Stika, H. P. 2004: Early Neolithic agriculture in the Iberian Peninsula. *Journal of World Prehistory* 18, 283–325.