



HAL
open science

Shape optimization for a fluid-elasticity system

Jean-Francois Scheid, Jan Sokolowski

► **To cite this version:**

Jean-Francois Scheid, Jan Sokolowski. Shape optimization for a fluid-elasticity system. 2017. hal-01449478v1

HAL Id: hal-01449478

<https://hal.science/hal-01449478v1>

Preprint submitted on 30 Jan 2017 (v1), last revised 20 Mar 2017 (v2)

HAL is a multi-disciplinary open access archive for the deposit and dissemination of scientific research documents, whether they are published or not. The documents may come from teaching and research institutions in France or abroad, or from public or private research centers.

L'archive ouverte pluridisciplinaire **HAL**, est destinée au dépôt et à la diffusion de documents scientifiques de niveau recherche, publiés ou non, émanant des établissements d'enseignement et de recherche français ou étrangers, des laboratoires publics ou privés.

SHAPE OPTIMIZATION FOR A FLUID-ELASTICITY SYSTEM

JEAN-FRANÇOIS SCHEID AND JAN SOKOLOWSKI

ABSTRACT. In this paper, we are interested in a shape optimization problem for a fluid-structure interaction system composed by an elastic structure immersed in a viscous incompressible fluid. The cost functional to minimize is an energy functional involving together the fluid and the elastic parts of the structure. The shape optimization problem is introduced in the 2-dimensional case. However the results in this paper are obtained for a simplified free-boundary 1-dimensional problem. We prove that the shape optimization problem is wellposed. We study the shape differentiability of the free-boundary 1-dimensional model. The full characterization of the associated material derivatives is given together with the shape derivative of the energy functional. A special case is explicitly solved, showing the relevancy of this shape optimization approach for a simplified free boundary 1-dimensional problem. The full model in two spatial dimensions is under studies now.

1. INTRODUCTION

Free boundary problems are classical models e.g., for phase transitions or contact problems in structural mechanics. The optimal control or shape optimization of free boundary problems are challenging fields of research in the calculus of variations and in the theory of nonlinear partial differential equations. The obtained results can be verified by using numerical methods specific for the models. The questions to be addressed within the shape optimization framework are the existence and uniqueness of optimal shapes as well as the necessary and sufficient optimality conditions. The velocity method of shape sensitivity analysis can be applied. The existence of topological derivatives for the energy type shape functionals in multiphysics can be considered.

The important part of free boundary problems [2] are variational inequalities [3]. The optimal control [1] and the shape optimization [8] of variational inequalities are well understood for unilateral constraints only. In such a case the polyhedricity of the solution with respect to the shape can be exploited. The concurrent approach is the penalization technique as it is described e.g., in [1]. The multiphysics models are new and important branch of applied

Date: January 30, 2017.

2010 Mathematics Subject Classification. 35Q35, 35Q74, 35Q93, 49Q10, 74F10, 74B05.

Key words and phrases. Shape optimization, Fluid-structure interaction, Stokes equations coupled with linear elasticity.

shape optimization. In the paper a simple model of this type is rigorously analyzed from the point of view of sensitivity analysis. We present an approach of shape optimization to fluid structure interaction which can be generalized to more complex structures.

Let us consider an elastic structure immersed in a viscous incompressible fluid. The deformed elastic body occupies the domain $\Omega_S = \Omega'_S \setminus \bar{\omega} \subset \mathbb{R}^2$ with Ω'_S a simply connected domain and Ω_S is attached to the inner fixed boundary $\partial\omega$. The fluid fills up a bounded domain $\Omega_F = \Omega \setminus \overline{\Omega'_S} = \Omega \setminus (\overline{\Omega_S} \cup \bar{\omega})$ surrounding the elastic body Ω_S . We denote by $\Gamma_{FS} = \partial\Omega_F \cap \partial\Omega_S$ the

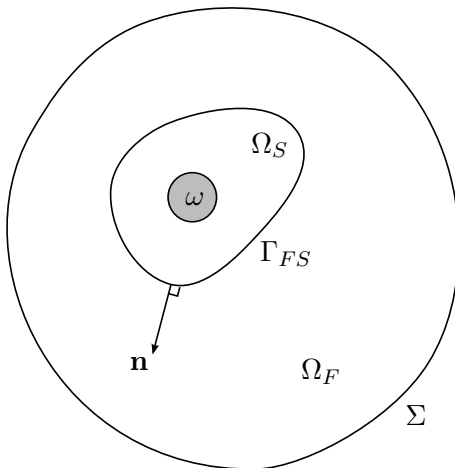


FIGURE 1. The geometry of the fluid-elasticity system

boundary between the fluid and the elastic structure and we have $\partial\Omega_F = \Gamma_{FS} \cup \Sigma$ where Σ is the outer boundary of the fluid domain (see Figure 1).

The fluid flow is governed by the Stokes equations for the velocity \mathbf{u} and the pressure p of the fluid:

$$(1.1) \quad -\operatorname{div} \sigma(\mathbf{u}, p) = \mathbf{f} \quad \text{in } \Omega_F$$

$$(1.2) \quad \operatorname{div} \mathbf{u} = 0 \quad \text{in } \Omega_F$$

where $\sigma(\mathbf{u}, p) = 2\nu D(\mathbf{u}) - pI_d$ is the Cauchy stress tensor with the symmetric strain tensor $D(\mathbf{u}) = \frac{1}{2}(\nabla \mathbf{u} + \nabla \mathbf{u}^\top)$. The fluid is subjected to a given force \mathbf{f} and ν is the viscosity of the fluid. At the boundary of the fluid domain, we impose

$$(1.3) \quad \mathbf{u} = 0 \quad \text{on } \partial\Omega_F = \Gamma_{FS} \cup \Sigma.$$

The elastic structure Ω_S is a deformation of a given reference bounded domain $\Omega_0 \subset \mathbb{R}^2$ by a mapping \mathbf{X} i.e. $\Omega_S = \mathbf{X}(\Omega_0)$ (see Figure 2).

The deformation mapping is given by $\mathbf{X} = I_d + \mathbf{w}$ where \mathbf{w} is the elastic displacement of the structure which satisfies the linearized elasticity equation

$$(1.4) \quad -\operatorname{div} \Pi(\mathbf{w}) = \mathbf{g} \quad \text{in } \Omega_0$$

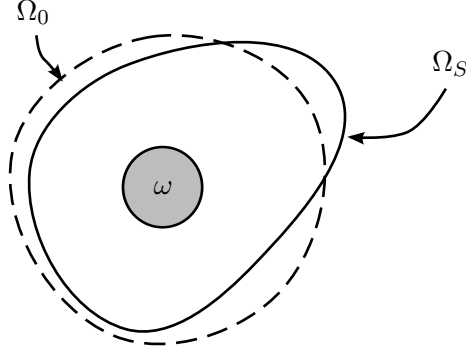


FIGURE 2. The elastic structure Ω_S is a deformation of a reference domain Ω_0

where Π is the second Piola-Kirchoff stress tensor of the elastic structure given by

$$(1.5) \quad \Pi(\mathbf{w}) = \lambda \text{tr}(D(\mathbf{w}))I_d + 2\mu D(\mathbf{w})$$

with the Lamé coefficients $\lambda > 0, \mu > 0$. The elastic body is subjected to a given external force \mathbf{g} . Since the elastic structure is clamped to the inner boundary $\partial\omega$, we have $\mathbf{X}(\partial\omega) = \partial\omega$ and

$$(1.6) \quad \mathbf{w} = 0 \quad \text{on } \partial\omega.$$

We also denote by Γ_0 the outer boundary of Ω_0 and we have $\Gamma_{FS} = \mathbf{X}(\Gamma_0)$.

According to the action-reaction principle we have

$$\int_{\Gamma_0} \Pi(\mathbf{w})\mathbf{n}_0 \cdot \mathbf{v} \circ \mathbf{X} \, d\Gamma = \int_{\Gamma_{FS}} \sigma(\mathbf{u}, p)\mathbf{n} \cdot \mathbf{v} \, d\Gamma$$

for all function \mathbf{v} defined on Ω_F . We denote by \mathbf{n}_0 the normal unit vector directed outwards to the domain Ω_0 and \mathbf{n} is the unit normal vector to Γ_{FS} directed from Ω_S to Ω_F .

This leads to the local relation

$$(1.7) \quad \Pi(\mathbf{w})\mathbf{n}_0 = (\sigma(\mathbf{u}, p) \circ \mathbf{X}) \text{cof}(\nabla \mathbf{X}) \mathbf{n}_0 \quad \text{on } \Gamma_0,$$

where $\text{cof}(\nabla \mathbf{X})$ denotes the cofactor matrix of the jacobian matrix (for an invertible matrix A , we have $A^{-1} = \frac{1}{\det(A)} \text{cof}(A)^\top$). The relation (1.7) can also be written on the boundary Γ_{FS} with

$$(1.8) \quad \sigma(\mathbf{u}, p)\mathbf{n} = (\Pi(\mathbf{w}) \circ \mathbf{X}^{-1}) \text{cof}(\nabla \mathbf{X}^{-1}) \mathbf{n} \quad \text{on } \Gamma_{FS}.$$

In summary, the fluid-elasticity system for $(\mathbf{u}, p, \mathbf{w})$ reads as

$$(1.9) \quad -\operatorname{div} \sigma(\mathbf{u}, p) = \mathbf{f} \quad \text{in } \Omega_F$$

$$(1.10) \quad \operatorname{div} \mathbf{u} = 0 \quad \text{in } \Omega_F$$

$$(1.11) \quad \mathbf{u} = 0 \quad \text{on } \partial\Omega_F = \Gamma_{FS} \cup \Sigma$$

$$(1.12) \quad -\operatorname{div} \Pi(\mathbf{w}) = \mathbf{g} \quad \text{in } \Omega_0$$

$$(1.13) \quad \mathbf{w} = 0 \quad \text{on } \partial\omega$$

$$(1.14) \quad \Pi(\mathbf{w})\mathbf{n}_0 = (\sigma(\mathbf{u}, p) \circ \mathbf{X}) \operatorname{cof}(\nabla \mathbf{X}) \mathbf{n}_0 \quad \text{on } \Gamma_0.$$

Existence of solution to a coupled fluid-elasticity system for Stokes equation with a nonlinear elastic structure is given in [5]. A similar system to (1.9)–(1.14) has also been studied in [4] with the stationary Navier-Stokes equations and where the elastic structure is assumed to be a S^tVenant–Kirchhoff material involving the *first* nonlinear Piola–Kirchhoff stress tensor (see also [9]).

Remark. Due to the incompressibility property of the fluid, the volume of the elastic structure is conserved during the deformation. Hence, we must have $|\Omega_S| = |\Omega_0|$ and the elastic displacement \mathbf{w} satisfies

$$(1.15) \quad \int_{\Omega_0} \det(\nabla \mathbf{X}) \, d\mathbf{y} = |\Omega_0|.$$

We shall consider the shape optimization for a free boundary problem originated from the fluid-structure interaction. There is the following structure of coupled fields. Given a reference domain Ω_0 for elastic part of the system, we solve the elasticity subproblem and find the displacement field w on Γ_0 from the boundary value problem with nonhomogeneous Neumann boundary condition

$$(1.16) \quad -\operatorname{div} \Pi(\mathbf{w}) = 0 \quad \text{in } \Omega_0$$

$$(1.17) \quad \mathbf{w} = 0 \quad \text{on } \partial\omega$$

$$(1.18) \quad \Pi(\mathbf{w})\mathbf{n}_0 = V \quad \text{on } \Gamma_0.$$

In another words we consider the Neumann-to-Dirichlet mapping associated with the elastic body. As a result, the deformation field X is determined for the boundary of fluid subdomain

$$X = \mathbb{I} + w.$$

The Stokes problem is solved in the new subdomain

$$(1.19) \quad -\operatorname{div} \sigma(\mathbf{u}, p) = \mathbf{f} \quad \text{in } \Omega_F$$

$$(1.20) \quad \operatorname{div} \mathbf{u} = 0 \quad \text{in } \Omega_F$$

$$(1.21) \quad \mathbf{u} = 0 \quad \text{on } \partial\Omega_F = \Gamma_{FS} \cup \Sigma$$

and the unknown field V becomes the fixed point

$$(1.22) \quad -\operatorname{div} \Pi(\mathbf{w}) = \mathbf{g} \quad \text{in } \Omega_0$$

$$(1.23) \quad \mathbf{w} = 0 \quad \text{on } \partial\omega$$

$$(1.24) \quad \Pi(\mathbf{w})\mathbf{n}_0 = (\sigma(\mathbf{u}, p) \circ \mathbf{X}) \operatorname{cof}(\nabla \mathbf{X}) \mathbf{n}_0 \quad \text{on } \Gamma_0.$$

It is clear that the fixed point condition on Γ_0 reads

$$V = (\sigma(\mathbf{u}(V), p(V)) \circ \mathbf{X}(V)) \operatorname{cof}(\nabla \mathbf{X}(V)) \mathbf{n}_0$$

The existence of solutions for the free boundary problem is already shown in [5] for a nonlinear elastic structure. We are interested in the question of shape sensitivity analysis for the free boundary problem. The first problem to solve is the stability of the free boundary with respect to the sequence of domains Ω_0^k . Such sequence is produced by shape optimization technique applied to a given shape functional. In such a case $\Omega_0^k \rightarrow \Omega_0^\infty$ is the minimizing sequence and we want to assure that the corresponding fixed point conditions also converges

$$V_k = (\sigma(\mathbf{u}_k(V_k), p_k(V_k)) \circ \mathbf{X}_k(V_k)) \operatorname{cof}(\nabla \mathbf{X}_k(V_k)) \mathbf{n}_0$$

to the fixed point condition in the limiting domain Ω_0^∞ . To our best knowledge such results are not known in the literature.

2. SHAPE OPTIMIZATION

We aim to determine the optimal reference domain for which the fluid energy functional is minimum. More precisely, we want to determine a bounded domain $\Omega_0^* \in \mathcal{U}_{ad}$ which minimizes

$$(2.1) \quad \min_{\Omega_0 \in \mathcal{U}_{ad}} J(\Omega_0)$$

where \mathcal{U}_{ad} is the set of admissible domains :

$$\mathcal{U}_{ad} = \{\Omega_0 \subset \mathbb{R}^2, \Omega_0 = D_0 \setminus \bar{\omega} \text{ where } D_0 \text{ is a simply connected, bounded and regular domain containing } \bar{\omega}\}.$$

The energy functional $J(\Omega_0)$ given by

$$(2.2) \quad J(\Omega_0) = \int_{\Omega_F} |\nabla \mathbf{u}|^2 d\mathbf{x} + \eta \int_{\Omega_0} |D(\mathbf{w})|^2 d\mathbf{y}$$

with a given parameter $\eta > 0$ and where \mathbf{u} and $\mathbf{X} = I_d + \mathbf{w}$ satisfy (1.9)–(1.14). The energy functional $J(\Omega_0)$ is composed by a fluid energy term and the elastic energy of deformation weighted by the parameter η .

3. A ONE-DIMENSIONAL MODEL

In order to appreciate the relevance of the shape optimization problem presented above, we study a simplified one dimensional model. This system reads as follows. Let $y_0 \in (0, 1)$ be given. We are seeking for two scalar functions u and w satisfying

$$(3.1) \quad \begin{aligned} -\partial_{xx}u(x) &= f(x), \quad x \in (0, x^*) \\ u(0) &= u(x^*) = 0 \end{aligned}$$

$$(3.2) \quad \begin{aligned} -\partial_{yy}w(y) &= g(y), \quad y \in (y_0, 1) \\ w(1) &= 0 \end{aligned}$$

The boundary point x^* is obtained by the deformation of the reference point y_0 with

$$(3.3) \quad x^* = x^*(y_0) = y_0 + w(y_0).$$

We also impose

$$(3.4) \quad \partial_x u(x^*) = \partial_y w(y_0)$$

which is the 1d-analogous of (1.14). We point out that the 1d-model does not account for the "volume conservation" constraint (1.15) derived in the 2d model.

The energy functional associated to the system (3.1),(3.2) is given by

$$(3.5) \quad J(y_0) = \int_0^{x^*} |\partial_x u|^2 dx + \eta \int_{y_0}^1 |\partial_y w|^2 dy$$

with a parameter $\eta > 0$. The one-dimensional shape optimization problem consists in finding the reference point $y_0 \in I_0$ that minimizes

$$(3.6) \quad \min_{y_0 \in I_0} J(y_0).$$

where $I_0 = \{y_0 \in (0, 1) \text{ such that } x^* = x^*(y_0) \in (0, 1)\}$.

3.1. Well-posedness. In this section, we show that for $y_0 \in (0, 1)$ and for f and g *small enough*, the problem (3.1)–(3.4) admits a unique solution (u, w, x^*) with $x^* \in (0, 1)$. This will be proved by a fixed point argument using the contraction mapping theorem.

Let us fix $y_0 \in (0, 1)$, $f \in L^2(0, 1)$ and $g \in L^2(0, 1)$. We introduce the mapping T :

$$(3.7) \quad T(s) = y_0 + v(s, y_0) \quad \text{for } s \in (0, 1),$$

where v is the solution of

$$(3.8) \quad \begin{aligned} -\partial_{yy}v(s, y) &= g(y), \quad y \in (y_0, 1) \\ v(s, 1) &= 0 \\ \partial_y v(s, y_0) &= \partial_x u(s) \end{aligned}$$

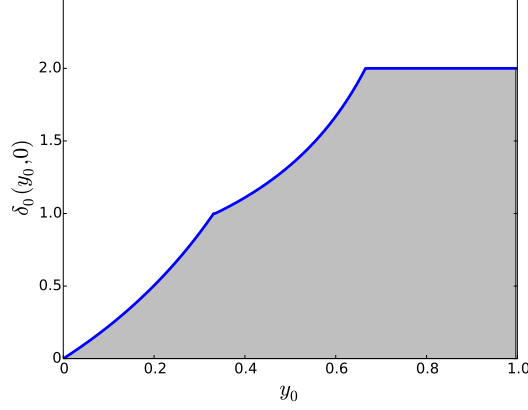


FIGURE 3. The bound $\delta_0(y_0, 0)$ on f and g for the well-posedness of (3.1)–(3.4) for $y_0 \in (0, 1)$.

$$(3.9) \quad \begin{aligned} -\partial_{xx}u(x) &= f(x), \quad x \in (0, s) \\ u(0) &= u(s) = 0 \end{aligned}$$

For any $s \in (0, 1)$, Problem (3.9) admits a unique solution $u = u(s, \cdot) \in H_0^1(0, s) \cap H^2(0, s)$. The derivative $\partial_x u$ is then continuous in $[0, s]$ and Problem (3.8) also admits a unique solution $v = v(s, \cdot) \in H^2(y_0, 1)$. It is clear that $x^* \in (0, 1)$ is a fixed point for T i.e. $x^* = T(x^*)$ if and only if $(u(x^*, \cdot), v(x^*, \cdot), x^*)$ is a solution of Problem (3.1)–(3.4). The following existence result holds.

Proposition 3.1. *Let $0 \leq \varepsilon < 1$, $y_0 \in (\varepsilon, 1)$ and $f, g \in L^\infty(0, 1)$. There exists $\delta_0 = \delta_0(y_0, \varepsilon) > 0$ such that if $\|f\|_\infty + \|g\|_\infty \leq \delta_0$ then Problem (3.1)–(3.4) admits a unique solution (u, w, x^*) with $u \in H^2(0, x^*)$, $w \in H^2(y_0, 1)$ and $x^* \in (\varepsilon, 1)$ which satisfies the following relation*

$$(3.10) \quad x^* = y_0 + \int_{y_0}^1 (1-y)g(y) dy + \frac{(1-y_0)}{x^*} \int_0^{x^*} xf(x) dx.$$

Moreover, δ_0 can be chosen as a non-decreasing function of y_0 with

$$(3.11) \quad \delta_0(y_0, \varepsilon) = 2 \min\left(1, \frac{y_0 - \varepsilon}{1 - y_0}, \frac{1}{3(1 - y_0)}\right) > 0.$$

Proof. Let $\varepsilon \in [0, 1)$. We prove that for sufficiently small f and g , the mapping T defined by (3.7) maps the interval $(\varepsilon, 1)$ into itself and T is a contraction mapping on $(\varepsilon, 1)$. This ensures the existence and the uniqueness of a fixed point $x^* \in (\varepsilon, 1)$ for T .

According to (3.7), if $|v(s, y_0)| < \min(y_0 - \varepsilon, 1 - y_0)$ for all $s \in (\varepsilon, 1)$ then $T(s) \in (\varepsilon, 1)$ for all $s \in (\varepsilon, 1)$. Let $s \in (\varepsilon, 1)$ be fixed. We estimate $v(s, y_0)$

with respect to f and g . To this end, let us write

$$v(s, y_0) = - \int_{y_0}^1 \partial_y v(s, y) dy = - \int_{y_0}^1 \partial_y v(s, y) \partial_y \varphi(y) dy,$$

with $\varphi(y) = y - 1$. Since $\varphi(1) = 0$ and $\partial_y \varphi \equiv 1$ in $(y_0, 1)$, we obtain with integration by parts

$$\begin{aligned} v(s, y_0) &= \int_{y_0}^1 \partial_{yy} v(s, y) (y - 1) dy + \partial_y v(s, y_0) (y_0 - 1) \\ &= - \int_{y_0}^1 g(y) (y - 1) dy + \partial_y v(s, y_0) (y_0 - 1) \\ (3.12) \quad &= - \int_{y_0}^1 g(y) (y - 1) dy + \partial_x u(s) (y_0 - 1), \end{aligned}$$

thanks to the boundary condition in (3.8). In addition, starting from (3.9) we have

$$- \int_0^s \partial_{xx} u(x) \phi(x) dx = \int_0^s f(x) \phi(x) dx,$$

with $\phi(x) = x$. Integrating by parts, using $\phi(0) = 0$ and $\partial_x \phi \equiv 1$ in $(0, s)$ together with the boundary conditions for u in (3.9), we get

$$(3.13) \quad \partial_x u(s) = -\frac{1}{s} \int_0^s x f(x) dx.$$

Combining (3.12) with (3.13), we finally obtain

$$(3.14) \quad v(s, y_0) = \int_{y_0}^1 (1 - y) g(y) dy + \frac{(1 - y_0)}{s} \int_0^s x f(x) dx.$$

We are now in position to estimate $v(s, y_0)$:

$$\begin{aligned} |v(s, y_0)| &\leq \|g\|_\infty \int_{y_0}^1 (1 - y) dy + \frac{(1 - y_0)}{s} \|f\|_\infty \int_0^s x dx \\ &\leq \frac{(1 - y_0)^2}{2} \|g\|_\infty + \frac{s}{2} (1 - y_0) \|f\|_\infty \\ (3.15) \quad &\leq \frac{(1 - y_0)}{2} (\|g\|_\infty + \|f\|_\infty) \end{aligned}$$

We choose f and g such that

$$(3.16) \quad \|g\|_\infty + \|f\|_\infty \leq 2 \min\left(\frac{y_0 - \varepsilon}{1 - y_0}, 1\right)$$

so that we have $|v(s, y_0)| < \min(y_0 - \varepsilon, 1 - y_0)$ and thus $T(s) \in (\varepsilon, 1)$.

Now, we prove that T is a contraction mapping on $(0, 1)$. According to (3.14), we have, for any $s_1, s_2 \in (0, 1)$, $s_1 \neq s_2$,

$$\begin{aligned} T(s_1) - T(s_2) &= v(s_1, y_0) - v(s_2, y_0) \\ &= (1 - y_0) \left(\frac{1}{s_1} \int_0^{s_1} x f(x) dx - \frac{1}{s_2} \int_0^{s_2} x f(x) dx \right). \end{aligned}$$

Without loss of generality we assume that $s_1 > s_2$ and we write

$$T(s_1) - T(s_2) = (1 - y_0) \left(\left(\frac{1}{s_1} - \frac{1}{s_2} \right) \int_0^{s_2} x f(x) dx + \frac{1}{s_1} \int_{s_2}^{s_1} x f(x) dx \right).$$

This leads to

$$\begin{aligned} |T(s_1) - T(s_2)| &\leq (1 - y_0) \|f\|_\infty \left(\left| \frac{1}{s_1} - \frac{1}{s_2} \right| \frac{s_2^2}{2} + \frac{1}{s_1} \left| \frac{s_1^2}{2} - \frac{s_2^2}{2} \right| \right) \\ &\leq \frac{(1 - y_0)}{2} \|f\|_\infty \left(\frac{s_2}{s_1} + \frac{s_1 + s_2}{s_1} \right) |s_1 - s_2|. \end{aligned}$$

Since $s_1 > s_2$, we obtain

$$(3.17) \quad |T(s_1) - T(s_2)| < \frac{3}{2} (1 - y_0) \|f\|_\infty |s_1 - s_2|$$

We choose f such that

$$(3.18) \quad \|f\|_\infty \leq \frac{2}{3(1 - y_0)},$$

so that $|T(s_1) - T(s_2)| < |s_1 - s_2|$ and thus T is a contraction mapping on $(0, 1)$.

Let $\delta_0 = \delta_0(y_0, \varepsilon) = 2 \min(1, \frac{y_0 - \varepsilon}{1 - y_0}, \frac{1}{3(1 - y_0)}) > 0$. Combining (3.16) with (3.18), we conclude that if $\|g\|_\infty + \|f\|_\infty \leq \delta_0$ then T admits a unique fixed point $x^* \in (\varepsilon, 1)$ which thus satisfies (3.10). \square

3.2. A fixed domain formulation. In this section we transform the 1d fluid-elastic system (3.1)-(3.4) in a nonlinear problem posed in reference intervals. Let us fix two reference points $\hat{x}_0, \hat{y}_0 \in (0, 1)$. For given s and $t \in (0, 1)$, we introduce the one-to-one regular mappings φ_s and ϕ_t defined in $[0, 1]$ such that

$$(3.19) \quad \begin{aligned} \varphi_s([0, \hat{x}_0]) &= [0, s] \quad \text{with} \quad \varphi_s(0) = 0, \quad \varphi_s(\hat{x}_0) = s \\ \phi_t([\hat{y}_0, 1]) &= [t, 1] \quad \text{with} \quad \phi_t(\hat{y}_0) = t, \quad \phi_t(1) = 1, \end{aligned}$$

with

$$(3.20) \quad \varphi_{\hat{x}_0} \equiv I_d, \quad \phi_{\hat{y}_0} \equiv I_d.$$

We suppose that $\varphi_s \in C^2([0, 1])$ for all $s \in (0, 1)$ and $s \mapsto \varphi_s(x)$ belongs to $C^1(0, 1)$ for all $x \in [0, 1]$. Similarly, we suppose $\phi_t \in C^2([0, 1])$ for all $t \in (0, 1)$ and $t \mapsto \phi_t(y)$ belongs to $C^1(0, 1)$ for all $y \in [0, 1]$. We have that $\varphi'_s > 0$ in $[0, \hat{x}_0]$, for all $s \in (0, 1)$ and $\phi'_t > 0$ in $[\hat{y}_0, 1]$, for all $t \in (0, 1)$.

Let (u, w, x^*) be the solution of (3.1)-(3.4). Then we define the following changes of variables

$$(3.21) \quad \begin{aligned} \hat{u}(\hat{x}) &= u(x), \quad \hat{f}(\hat{x}) = f(x) \quad \text{with} \quad x = \varphi_{x^*}(\hat{x}) \quad \text{for} \quad \hat{x} \in [0, \hat{x}_0], \\ \hat{w}(\hat{y}) &= w(y), \quad \hat{g}(\hat{y}) = g(y) \quad \text{with} \quad y = \phi_{y_0}(\hat{y}) \quad \text{for} \quad \hat{y} \in [\hat{y}_0, 1]. \end{aligned}$$

The functions (\hat{u}, \hat{w}) satisfy the following nonlinear problem posed in the reference intervals $[0, \hat{x}_0]$ and $[\hat{y}_0, 1]$:

$$(3.22) \quad \begin{aligned} -\partial_{\hat{x}} \left(\frac{1}{\varphi'_{x^*}(\hat{x})} \partial_{\hat{x}} \hat{u}(\hat{x}) \right) &= \varphi'_{x^*}(\hat{x}) \hat{f}(\hat{x}), & \hat{x} \in (0, \hat{x}_0) \\ \hat{u}(0) &= \hat{u}(\hat{x}_0) = 0 \end{aligned}$$

$$(3.23) \quad \begin{aligned} -\partial_{\hat{y}} \left(\frac{1}{\phi'_{y_0}(\hat{y})} \partial_{\hat{y}} \hat{w}(\hat{y}) \right) &= \phi'_{y_0}(\hat{y}) \hat{g}(\hat{y}), & \hat{y} \in (\hat{y}_0, 1) \\ \hat{w}(1) &= 0 \end{aligned}$$

$$(3.24) \quad \frac{1}{\varphi'_{x^*}(\hat{x}_0)} \partial_{\hat{x}} \hat{u}(\hat{x}_0) = \frac{1}{\phi'_{y_0}(\hat{y}_0)} \partial_{\hat{y}} \hat{w}(\hat{y}_0).$$

The mappings φ_{x^*} and ϕ_{y_0} can be chosen for instance, as the unique solutions of

$$(3.25) \quad \begin{aligned} \varphi''_{x^*} &= 0 \text{ in } (0, \hat{x}_0) & \phi''_{y_0} &= 0 \text{ in } (\hat{y}_0, 1) \\ \varphi_{x^*}(0) &= 0, \varphi_{x^*}(\hat{x}_0) = x^* & \phi_{y_0}(\hat{y}_0) &= y_0, \phi_{y_0}(1) = 1 \end{aligned}$$

that is

$$(3.26) \quad \begin{aligned} \varphi_{x^*}(\hat{x}) &= \frac{x^*}{\hat{x}_0} \hat{x} = \frac{y_0 + \hat{w}(\hat{y}_0)}{\hat{x}_0} \hat{x} & \text{for } \hat{x} \in [0, \hat{x}_0] \\ \phi_{y_0}(\hat{y}) &= \frac{(y_0 - 1)}{(\hat{y}_0 - 1)} (\hat{y} - 1) + 1 & \text{for } \hat{y} \in [\hat{y}_0, 1] \end{aligned}$$

With that choices for φ_{x^*} and ϕ_{y_0} , the unknowns (\hat{u}, \hat{w}) satisfy

$$(3.27) \quad \begin{aligned} -\partial_{\hat{x}\hat{x}} \hat{u}(\hat{x}) &= \left(\frac{y_0 + \hat{w}(\hat{y}_0)}{\hat{x}_0} \right)^2 \hat{f}(\hat{x}), & \hat{x} \in (0, \hat{x}_0) \\ \hat{u}(0) &= \hat{u}(\hat{x}_0) = 0 \\ -\partial_{\hat{y}\hat{y}} \hat{w}(\hat{y}) &= \left(\frac{y_0 - 1}{\hat{y}_0 - 1} \right)^2 \hat{g}(\hat{y}), & \hat{y} \in (\hat{y}_0, 1) \\ \hat{w}(1) &= 0 \\ \left(\frac{\hat{x}_0}{y_0 + \hat{w}(\hat{y}_0)} \right) \partial_{\hat{x}} \hat{u}(\hat{x}_0) &= \left(\frac{\hat{y}_0 - 1}{y_0 - 1} \right) \partial_{\hat{y}} \hat{w}(\hat{y}_0) \end{aligned}$$

3.3. Existence of an optimal interval. We shall prove that the optimal problem (3.5),(3.6) admits an optimal reference point y_0 . More precisely, we have the following result

Proposition 3.2. *Let $0 < \varepsilon_1 < \varepsilon_2 < 1$ and $f, g \in L^\infty(0, 1)$. There exists $\eta_0 = \eta_0(\varepsilon_1) > 0$ such that if $\|f\|_\infty + \|g\|_\infty \leq \eta_0$ then there exists $y_0^* \in [\varepsilon_1, \varepsilon_2]$ that realizes $\min_{y_0 \in [\varepsilon_1, \varepsilon_2]} J(y_0)$.*

Proof. We fix $0 < \varepsilon_1 < \varepsilon_2 < 1$. We define $\eta_0(\varepsilon_1) = \delta_0(\varepsilon_1, \varepsilon_1/2) > 0$ where δ_0 is given by (3.11) in Proposition 3.1. We choose $f, g \in L^\infty(0, 1)$ such that $\|f\|_\infty + \|g\|_\infty \leq \eta_0(\varepsilon_1) = \delta_0(\varepsilon_1, \varepsilon_1/2)$. Since δ_0 is a non-decreasing function of y_0 , we have $\eta_0(\varepsilon_1) \leq \delta_0(y_0, \varepsilon_1/2)$ for all $y_0 \in [\varepsilon_1, \varepsilon_2]$. According to Proposition 3.1, Problem (3.1)–(3.4) admits a unique solution for all $y_0 \in [\varepsilon_1, \varepsilon_2]$, with $x^* \in [\varepsilon_1/2, 1)$. Thus, J is well-defined in $[\varepsilon_1, \varepsilon_2]$. Let $(y_n)_{n \geq 1} \in [\varepsilon_1, \varepsilon_2]$ be a minimizing sequence of J i.e. $\lim_{n \rightarrow +\infty} J(y_n) = \inf_{y_0 \in [\varepsilon_1, \varepsilon_2]} J(y_0)$. There exists a sub-sequence still denoted y_n and $y_0^* \in [\varepsilon_1, \varepsilon_2]$ such that

$\lim_{n \rightarrow +\infty} y_n = y_0^*$. We have to prove that $\lim_{n \rightarrow +\infty} J(y_n) = J(y_0^*)$. We denote by $(u_n, w_n, x_n^*) \in H^2(0, x_n^*) \times H^2(y_n, 1) \times [\varepsilon_1/2, 1)$ the solution of

$$(3.28) \quad \begin{aligned} -\partial_{xx} u_n(x) &= f(x), \quad x \in (0, x_n^*) \\ u_n(0) &= u_n(x_n^*) = 0 \\ -\partial_{yy} w_n(y) &= g(y), \quad y \in (y_n, 1) \\ w_n(1) &= 0 \\ \partial_x u_n(x_n^*) &= \partial_y w_n(y_n) \\ x_n^* &= y_n + w_n(y_n) \end{aligned}$$

According to Section 3.2, we transform the system (3.28) on a fixed domain independent of n by setting $\hat{u}_n(\hat{x}) = u_n(x)$ with $x = \varphi(\hat{x})$ for $\hat{x} \in [0, \hat{y}_0^*]$ and $\hat{w}_n(\hat{y}) = w_n(y)$ with $y = \phi(\hat{y})$ for $\hat{y} \in [\hat{y}_0^*, 1]$. The functions φ and ϕ (see (3.26)) are given by

$$(3.29) \quad \begin{aligned} \varphi(\hat{x}) &= \frac{y_n + \hat{w}_n(y_0^*)}{y_0^*} \hat{x} \quad \text{for } \hat{x} \in [0, \hat{y}_0^*] \\ \phi(\hat{y}) &= \frac{(y_n - 1)}{(y_0^* - 1)} (\hat{y} - 1) + 1 \quad \text{for } \hat{y} \in [\hat{y}_0^*, 1] \end{aligned}$$

The functions (\hat{u}_n, \hat{w}_n) satisfy

$$(3.30) \quad \begin{aligned} -\partial_{\hat{x}\hat{x}} \hat{u}_n(\hat{x}) &= \left(\frac{y_n + \hat{w}_n(y_0^*)}{y_0^*} \right)^2 \hat{f}(\hat{x}), \quad \hat{x} \in (0, y_0^*) \\ \hat{u}_n(0) &= \hat{u}_n(y_0^*) = 0 \end{aligned}$$

$$(3.31) \quad \begin{aligned} -\partial_{\hat{y}\hat{y}} \hat{w}_n(\hat{y}) &= \left(\frac{y_n - 1}{y_0^* - 1} \right)^2 \hat{g}(\hat{y}), \quad \hat{y} \in (y_0^*, 1) \\ \hat{w}_n(1) &= 0 \\ \left(\frac{y_0^*}{y_n + \hat{w}_n(y_0^*)} \right) \partial_{\hat{x}} \hat{u}_n(y_0^*) &= \left(\frac{y_0^* - 1}{y_n - 1} \right) \partial_{\hat{y}} \hat{w}_n(y_0^*) \end{aligned}$$

Since $x_n^* = y_n + w_n(y_n) = y_n + \hat{w}_n(y_0^*) \in [\varepsilon_1/2, 1)$, we deduce from (3.30) that $\|\hat{u}_n\|_{H^2(0, y_0^*)} \leq C$ where $C > 0$ is a constant independent of n . Then there exists a sub-sequence still denoted \hat{u}_n and $\hat{u}_0 \in H^2(0, y_0^*)$ such that $\hat{u}_n \rightharpoonup_{n \rightarrow +\infty} \hat{u}_0$ weakly in $H^2(0, y_0^*)$. From (3.31), we deduce that $\|\hat{w}_n\|_{H^2(y_0^*, 1)} \leq C'$ where $C' > 0$ is a constant independent of n . Then there exists a sub-sequence still denoted \hat{w}_n and $\hat{w}_0 \in H^2(y_0^*, 1)$ such that $\hat{w}_n \rightharpoonup_{n \rightarrow +\infty} \hat{w}_0$ weakly in $H^2(y_0^*, 1)$ and \hat{w}_0 satisfies

$$(3.32) \quad \begin{aligned} -\partial_{\hat{y}\hat{y}} \hat{w}_0(\hat{y}) &= \hat{g}(\hat{y}), \quad \hat{y} \in (y_0^*, 1) \\ \hat{w}_0(1) &= 0. \end{aligned}$$

Since $x_n^* = y_n + \hat{w}_n(y_0^*)$ and due to the compactness of the embedding $H^2(y_0^*, 1) \hookrightarrow C^1([y_0^*, 1])$, we deduce that $\lim_{n \rightarrow +\infty} x_n^* = x_0^*$ with

$$(3.33) \quad x_0^* = y_0^* + \hat{w}_0(y_0^*) \in [\varepsilon_1/2, 1] \subset (0, 1].$$

In addition, we obtain that \hat{u}_0 satisfies

$$(3.34) \quad \begin{aligned} -\partial_{\hat{x}\hat{x}} \hat{u}_0(\hat{x}) &= \left(\frac{y_0^* + \hat{w}_0(y_0^*)}{y_0^*} \right)^2 \hat{f}(\hat{x}), \quad \hat{x} \in (0, y_0^*) \\ \hat{u}_0(0) &= \hat{u}_0(y_0^*) = 0 \end{aligned}$$

and due to the compactness of the embedding $H^2(0, y_0^*) \hookrightarrow C^1([0, y_0^*])$ we have

$$(3.35) \quad \left(\frac{y_0^*}{y_0 + \hat{w}_0(y_0^*)}\right) \partial_{\hat{x}} \hat{u}_0(y_0^*) = \partial_{\hat{y}} \hat{w}_0(y_0^*)$$

We transform the problem (3.34), (3.35) on the interval $(0, x_0^*)$ by using the change of variables $\hat{u}_0(\hat{x}) = u_0(x)$ with (see Section 3.2)

$$(3.36) \quad x = \frac{x_0^*}{y_0^*} \hat{x} = \frac{y_0^* + \hat{w}_0(y_0^*)}{y_0^*} \hat{x} \quad \text{for } \hat{x} \in [0, y_0^*].$$

Thus the function u_0 satisfies

$$(3.37) \quad \begin{aligned} -\partial_{xx} u_0(x) &= f(x), \quad x \in (0, x_0^*) \\ u_0(0) &= u_0(x_0^*) = 0 \\ \partial_x u_0(x_0^*) &= \partial_{\hat{y}} \hat{w}_0(y_0^*) \end{aligned}$$

Moreover, using the change of variable (3.29) we have

$$\begin{aligned} J(y_n) &= \int_0^{x_n^*} |\partial_x u_n|^2 dx + \eta \int_{y_n}^1 |\partial_y w_n|^2 dy \\ &= \left(\frac{y_0^*}{y_n + \hat{w}_n(y_0^*)}\right) \int_0^{y_0^*} |\partial_{\hat{x}} \hat{u}_n|^2 d\hat{x} + \eta \left(\frac{y_0^* - 1}{y_n - 1}\right) \int_{y_0^*}^1 |\partial_{\hat{y}} \hat{w}_n|^2 d\hat{y} \end{aligned}$$

We deduce that

$$(3.38) \quad \lim_{n \rightarrow +\infty} J(y_n) = \left(\frac{y_0^*}{y_0^* + \hat{w}_0(y_0^*)}\right) \int_0^{y_0^*} |\partial_{\hat{x}} \hat{u}_0|^2 d\hat{x} + \eta \int_{y_0^*}^1 |\partial_{\hat{y}} \hat{w}_0|^2 d\hat{y}$$

Using the change of variable (3.36) with (3.33) in the right hand side of (3.38), we obtain

$$(3.39) \quad \lim_{n \rightarrow +\infty} J(y_n) = \int_0^{x_0^*} |\partial_x u_0|^2 dx + \eta \int_{y_0^*}^1 |\partial_{\hat{y}} \hat{w}_0|^2 d\hat{y} = J(y_0^*)$$

where (u_0, \hat{w}_0) satisfies (3.32), (3.37). The proof is then complete. \square

3.4. Shape differentiability. In this section, we prove the existence of the material derivatives associated to the solution (u, w) of the coupled problem (3.1)-(3.4). A full characterization of the material derivatives is given as the solution of an adjoint problem.

For a given $t \in (0, 1)$, we consider the following problem for (u_t, w_t, x_t^*) :

$$(3.40) \quad \begin{aligned} -\partial_{xx} u_t(x) &= f(x), \quad x \in (0, x_t^*) \\ u_t(0) &= u_t(x_t^*) = 0 \\ -\partial_{yy} w_t(y) &= g(y), \quad y \in (t, 1) \\ w_t(1) &= 0 \\ \partial_x u_t(x_t^*) &= \partial_y w_t(t) \\ x_t^* &= t + w_t(t). \end{aligned}$$

Let $y_0 \in (0, 1)$ and $\gamma > 0$ given. We choose $t \in (y_0 - \gamma, y_0 + \gamma) \cap (0, 1)$. We assume that the functions $f, g \in W^{1,\infty}(0, 1)$ and

$$(3.41) \quad \begin{aligned} \|f\|_{L^\infty(0,1)} + \|g\|_{L^\infty(0,1)} &\leq \delta_0(y_0 - \gamma, y_0 - 2\gamma) \\ &= 2 \min \left(1, \frac{\gamma}{1 - y_0 + \gamma}, \frac{1}{3(1 - y_0 + \gamma)} \right) \end{aligned}$$

where δ_0 is given by (3.11). Since $\delta_0(y_0, \varepsilon)$ is a non-decreasing function of y_0 , choosing $\varepsilon = y_0 - 2\gamma$ we have $\delta_0(y_0 - \gamma, y_0 - 2\gamma) \leq \delta_0(t, y_0 - 2\gamma)$ for all $t \in (y_0 - \gamma, y_0 + \gamma)$. Then, according to Proposition 3.1, Problem (3.40) admits a unique solution $(u_t, w_t, x_t^*) \in H^2(0, x_t^*) \times H^2(t, 1) \times (y_0 - 2\gamma, 1)$, for all $t \in (y_0 - \gamma, y_0 + \gamma) \cap (0, 1)$.

We emphasize that the solution (u, w, x^*) of (3.1)-(3.4) is the solution of (3.40) with $t = y_0$, i.e. $(u, w, x^*) = (u_{y_0}, w_{y_0}, x_{y_0}^*)$. Moreover, since we choose $f, g \in W^{1,\infty}(0, 1)$, the solution of (3.1)-(3.4) has the additional regularity

$$(3.42) \quad (u, w) \in H^3(0, x^*) \times H^3(y_0, 1).$$

We are dealing with a fixed domain formulation by using the one-to-one regular mappings φ_s and ϕ_t defined on $[0, 1]$ such that (see Section 3.2) :

$$(3.43) \quad \begin{aligned} \varphi_s([0, x^*]) &= [0, s] \quad \text{with} \quad \varphi_s(0) = 0, \quad \varphi_s(x^*) = s \\ \phi_t([y_0, 1]) &= [t, 1] \quad \text{with} \quad \phi_t(y_0) = t, \quad \phi_t(1) = 1, \end{aligned}$$

with

$$(3.44) \quad \varphi_{x^*} \equiv I_d, \quad \phi_{y_0} \equiv I_d.$$

We suppose that $\varphi_s \in C^2([0, 1])$ for all $s \in (0, 1)$ and $s \mapsto \varphi_s(x)$ belongs to $C^1(0, 1)$ for all $x \in [0, 1]$. Similarly, we suppose $\phi_t \in C^2([0, 1])$ for all $t \in (0, 1)$ and $t \mapsto \phi_t(y)$ belongs to $C^1(0, 1)$ for all $y \in [0, 1]$. We have that $\varphi'_s > 0$ in $[0, x^*]$, for all $s \in (0, 1)$ and $\phi'_t > 0$ in $[y_0, 1]$, for all $t \in (0, 1)$.

We shall say that a map $\mathcal{F} : t \in \mathbb{R} \mapsto f(t) \in X$ where X is a Banach space, is weakly continuous at $t = t_0$ if for all sequence $t_n \rightarrow t_0$ as $n \rightarrow \infty$, we have $f(t_n) \rightharpoonup f(t_0)$ weakly in X . The map \mathcal{F} is weakly-differentiable at $t = t_0$ if for all sequence $t_n \rightarrow t_0$, there exists $f'(t_0) \in X$ such that $\frac{f(t_n) - f(t_0)}{t_n - t_0} \rightharpoonup f'(t_0)$ weakly in X as $n \rightarrow \infty$.

Proposition 3.3. *Let $y_0 \in (0, 1)$ and $\gamma \in (0, 1/4)$ given. We assume that $f, g \in W^{1,\infty}(0, 1)$ satisfy (3.41). For all $t \in (y_0 - \gamma, y_0 + \gamma) \cap (0, 1)$, we consider the solution (u_t, w_t, x_t^*) of (3.40) and let (φ_s, ϕ_t) be the mappings defined by (3.43), (3.44). Then, the map $\mathcal{F} : t \mapsto (u_t \circ \varphi_{x_t^*}, w_t \circ \phi_t, x_t^*) \in H^2(0, x^*) \times H^2(y_0, 1) \times (0, 1)$ defined for $t \in (y_0 - \gamma, y_0 + \gamma) \cap (0, 1)$, is weakly-continuous and weakly-differentiable at $t = y_0$ and the associated material*

derivative $(\dot{u}, \dot{w}, \dot{x}^*) \in H^2(0, x^*) \times H^2(y_0, 1) \times \mathbb{R}$ is the solution of

$$(3.45) \quad \begin{aligned} -\partial_{xx}\dot{u} &= -\dot{x}^* \partial_{xx} \left((\partial_x u) \frac{d\varphi_s}{ds} \Big|_{s=x^*} \right) \quad \text{in } (0, x^*) \\ \dot{u}(0) &= \dot{u}(x^*) = 0 \\ -\partial_{yy}\dot{w} &= -\partial_{yy} \left((\partial_y w) \frac{d\phi_t}{dt} \Big|_{t=y_0} \right) \quad \text{in } (y_0, 1) \\ \dot{w}(1) &= 0 \end{aligned}$$

$$(3.46) \quad \begin{aligned} \partial_x \dot{u}(x^*) - \dot{x}^* \partial_x u(x^*) \frac{d}{ds} (\varphi'_s(x^*)) \Big|_{s=x^*} \\ = \partial_y \dot{w}(y_0) - \partial_y w(y_0) \frac{d}{dt} (\phi'_t(y_0)) \Big|_{t=y_0} \end{aligned}$$

Moreover, the derivative \dot{x}^* is given by

$$(3.47) \quad \dot{x}^* = \frac{1 - d^* - (1 - y_0)g(y_0)}{1 + (1 - y_0)(d^*/x^* - f(x^*))}$$

with $d^* = \frac{1}{x^*} \int_0^{x^*} xf(x) dx$.

Proof. We first prove that the map $\mathcal{F} : t \mapsto (u_t(\varphi_{x_t^*}), w_t(\phi_t), x_t^*)$ is weakly-continuous at $t = y_0$. More precisely, we shall prove that $x_t^* \rightarrow x^*$ and $u_t(\varphi_{x_t^*}) \rightharpoonup u$ weakly in $H^2(0, x^*)$, $w_t(\phi_t) \rightharpoonup w$ weakly in $H^2(y_0, 1)$ as $t \rightarrow y_0$.

According to (3.10), for all $t \in (y_0 - \gamma, y_0 + \gamma) \cap (0, 1)$, x_t^* satisfies

$$(3.48) \quad x_t^* = t + \int_t^1 (1 - y)g(y) dy + \frac{(1 - t)}{x_t^*} \int_0^{x_t^*} xf(x) dx.$$

Since $x_t^* \in (0, 1)$, there exists a subsequence $t_n \rightarrow y_0$ such that $x_{t_n}^* \rightarrow \tilde{x} \in [0, 1]$ which satisfies

$$(3.49) \quad \tilde{x} = y_0 + \int_{y_0}^1 (1 - y)g(y) dy + \frac{(1 - y_0)}{\tilde{x}} \int_0^{\tilde{x}} xf(x) dx.$$

Since x^* is the unique point satisfying (3.49) (see (3.10)), we have $\tilde{x} = x^*$. We can also prove that the whole sequence x_t^* is converging with $t \rightarrow y_0$. Thus, we have

$$(3.50) \quad x_t^* \rightarrow x^* \quad \text{as } t \rightarrow y_0.$$

Now, we turn to the convergence of u_t and w_t . Using the changes of variables $\hat{u} = u_t(\varphi_{x_t^*})$ and $\hat{w} = w_t(\phi_t)$ (see (3.21)) with $x = \varphi_{x_t^*}(\hat{x})$ and $y = \phi_t(\hat{y})$, the system (3.40) becomes (see (3.22), (3.23) and (3.24)):

$$(3.51) \quad \begin{aligned} -\partial_x \left(\frac{1}{\varphi'_{x_t^*}} \partial_x \hat{u} \right) &= \varphi'_{x_t^*} f(\varphi_{x_t^*}) \quad \text{in } (0, x^*) \\ \hat{u}(0) &= \hat{u}(x^*) = 0 \end{aligned}$$

$$(3.52) \quad \begin{aligned} -\partial_y \left(\frac{1}{\phi_t} \partial_y \hat{w} \right) &= \phi_t' g(\phi_t) \quad \text{in } (y_0, 1) \\ \hat{w}(1) &= 1 \end{aligned}$$

$$(3.53) \quad \frac{1}{\varphi_{x_t^*}'} \partial_x \hat{u}(x^*) = \frac{1}{\phi_t'(y_0)} \partial_y \hat{w}(y_0)$$

We introduce

$$(3.54) \quad c_{1,t} = \hat{u} - u = u_t(\varphi_{x_t^*}) - u \in H^2(0, x^*)$$

and subtracting (3.51) with (3.40) at $t = y_0$ for u , we get

$$(3.55) \quad \begin{aligned} -\partial_x \left(\frac{1}{\varphi_{x_t^*}'} \partial_x c_{1,t} \right) - \partial_x \left(\left(\frac{1}{\varphi_{x_t^*}'} - 1 \right) \partial_x u \right) &= \left(\varphi_{x_t^*}' f(\varphi_{x_t^*}) - f \right) \quad \text{in } (0, x^*) \\ c_{1,t}(0) &= c_{1,t}(x^*) = 0 \end{aligned}$$

Due to (3.50) and the fact that $\|\varphi_s'\|_{L^\infty(0, x^*)} \rightarrow 1$ as $s \rightarrow x^*$, we have

$$(3.56) \quad \left\| \frac{1}{\varphi_{x_t^*}'} - 1 \right\|_{L^\infty(0, x^*)} \xrightarrow{t \rightarrow y_0} 0, \quad \left\| \varphi_{x_t^*}' f(\varphi_{x_t^*}) - f \right\|_{L^\infty(0, x^*)} \xrightarrow{t \rightarrow y_0} 0.$$

As a result, we deduce from (3.55) that for $|t - y_0|$ small enough,

$$\|c_{1,t}\|_{H^2(0, x^*)} \leq C$$

where $C > 0$ does not depend on t . Thus, there exists a subsequence $t_n \rightarrow y_0$ and $c_1 \in H^2(0, x^*)$ such that $c_{1,t_n} \rightharpoonup c_1$ weakly in H^2 and c_1 satisfies

$$\begin{aligned} -\partial_{xx} c_1 &= 0 \quad \text{in } (0, x^*) \\ c_1(0) &= c_1(x^*) = 0 \end{aligned}$$

Thus, we have $c_1 \equiv 0$ in $(0, x^*)$ and in addition we can prove that the whole sequence $c_{1,t}$ is converging to 0. Thus,

$$(3.57) \quad u_t(\varphi_{x_t^*}) \rightharpoonup u \quad \text{weakly in } H^2(0, x^*) \text{ as } t \rightarrow y_0.$$

Moreover, from the compactness of the embedding of $H^2(0, x^*)$ into $C^1([0, x^*])$, we deduce that

$$(3.58) \quad \partial_x c_{1,t}(x^*) \rightarrow 0 \quad \text{as } t \rightarrow y_0,$$

that is

$$(3.59) \quad \partial_x u_t(\varphi_{x_t^*})(x^*) \rightarrow \partial_x u(x^*) \quad \text{as } t \rightarrow y_0.$$

Now, we introduce

$$(3.60) \quad c_{2,t} = \hat{w} - w = w_t(\phi_t) - w \in H^2(y_0, 1).$$

Subtracting (3.52) and (3.53) with (3.40) at $t = y_0$ for w , we get

$$(3.61) \quad \begin{aligned} -\partial_y \left(\frac{1}{\phi'_t} \partial_y c_{2,t} \right) - \partial_y \left(\left(\frac{1}{\phi'_t} - 1 \right) \partial_y w \right) &= (\phi'_t g(\phi_t) - g) \text{ in } (y_0, 1) \\ c_{2,t}(1) &= 0 \\ \frac{1}{\varphi'_{x_t^*}(x^*)} \partial_x c_{1,t}(x^*) + \left(\frac{1}{\varphi'_{x_t^*}(x^*)} - 1 \right) \partial_x u(x^*) &= \frac{1}{\phi'_t(y_0)} \partial_y c_{2,t}(y_0) + \left(\frac{1}{\phi'_t(y_0)} - 1 \right) \partial_y w(y_0) \end{aligned}$$

We deduce that for all $v \in H^1(y_0, 1)$ with $v(1) = 0$, we have

$$(3.62) \quad \begin{aligned} \int_{y_0}^1 \frac{1}{\phi'_t(y)} \partial_y c_{2,t}(y) \partial_y v(y) dy + \left(\frac{1}{\varphi'_{x_t^*}(x^*)} \partial_x c_{1,t}(x^*) + \left(\frac{1}{\varphi'_{x_t^*}(x^*)} - 1 \right) \partial_x u(x^*) \right) v(y_0) \\ = \int_{y_0}^1 \left(\frac{1}{\phi'_t(y)} - 1 \right) \partial_y w(y) \partial_y v(y) dy + \int_{y_0}^1 (\phi'_t(y) g(\phi_t(y)) - g(y)) v(y) dy, \end{aligned}$$

We recall that $\phi'_t > 0$ in $[y_0, 1]$ and $\|\phi'_t\|_{L^\infty(y_0,1)} \rightarrow 1$ as $t \rightarrow y_0$. Then,

$$(3.63) \quad \left\| \frac{1}{\phi'_t} - 1 \right\|_{L^\infty(y_0,1)} \xrightarrow[t \rightarrow y_0]{} 0, \quad \|\phi'_t g(\phi_t) - g\|_{L^\infty(0,x^*)} \xrightarrow[t \rightarrow y_0]{} 0.$$

We take $v = c_{2,t}$ in (3.62). Using (3.58) and the trace inequality $|v(y_0)| \leq C \|\partial_y v\|_{L^2(y_0,1)}$ for all $v \in H^1(y_0, 1)$ with $v(1) = 0$, where C is independant of v , we obtain that for $|t - y_0|$ small enough,

$$\|c_{2,t}\|_{H^1(y_0,1)} \leq C$$

where $C > 0$ does not depend on t . Going back to the strong form (3.61), we get a uniform bound for $\|\partial_{xx} c_{2,t}\|_{L^2(y_0,1)}$ with respect to t and thus for $|t - y_0|$ small enough, we have

$$(3.64) \quad \|c_{2,t}\|_{H^2(y_0,1)} \leq C$$

where $C > 0$ does not depend on t . Thus, there exists a subsequence $t_n \rightarrow y_0$ and $c_2 \in H^2(y_0, 1)$ such that $c_{2,t_n} \rightharpoonup c_2$ weakly in H^2 and c_2 satisfies

$$(3.65) \quad \begin{aligned} -\partial_{yy} c_2 &= 0 \text{ in } (y_0, 1) \\ c_2(1) &= 0 \end{aligned}$$

We can prove that the whole sequence $c_{2,t}$ is converging. We have $c_{2,t}(y_0) \rightarrow c_2(y_0)$ as $t \rightarrow y_0$. Furthermore, since $c_{2,t}(y_0) = w(y_0) - w_t(\phi_t(y_0)) = -y_0 + x^* + t - x_t^*$, we deduce that $c_{2,t}(y_0) \rightarrow 0$ as $t \rightarrow y_0$ thanks to (3.50). Hence, we obtain that $c_2(y_0) = 0$ and using (3.65) we conclude that $c_2 \equiv 0$ in $(y_0, 1)$. We have proved that

$$(3.66) \quad w_t(\phi_t) \rightharpoonup w \text{ weakly in } H^2(y_0, 1) \text{ as } t \rightarrow y_0.$$

The properties (3.50), (3.57), (3.66) show that the map $\mathcal{F} : t \mapsto (u_t \circ \varphi_{x_t^*}, w_t \circ \phi_t, x_t^*)$ is weakly-continuous at $t = y_0$.

Now, let us prove the weak-differentiability of \mathcal{F} at $t = y_0$. We first prove that the map $t \mapsto x_t^*$ is differentiable at $t = y_0$. Let us define

$$(3.67) \quad \tau_t = \frac{x_t^* - x^*}{h} \quad \text{with } h = t - y_0.$$

Starting from (3.10) and (3.48), we obtain that τ_t satisfies the relation

$$(3.68) \quad \left(1 - \frac{(1-t)}{x_t^*}(S_t - d^*)\right) \tau_t = 1 + R_t - d^*$$

with

$$\begin{aligned} d^* &= \frac{1}{x^*} \int_0^{x^*} x f(x) dx \\ R_t &= \frac{1}{t - y_0} \int_t^{y_0} (1-y)g(y) dy \\ S_t &= \frac{1}{x_t^* - x^*} \int_{x^*}^{x_t^*} x f(x) dx \end{aligned}$$

We clearly have $\frac{|S_t|}{x_t^*} \leq \|f\|_\infty$ and $\frac{|d^*|}{x_t^*} \leq \frac{x^*}{2x_t^*} \|f\|_\infty$ and then

$$\left| \frac{(1-t)}{x_t^*}(S_t - d^*) \right| \leq (1 - y_0 + \gamma) \left(1 + \frac{x^*}{2x_t^*}\right) \|f\|_\infty$$

for all $t \in (y_0 - \gamma, y_0 + \gamma)$. Since $x_t^* \rightarrow x^*$ as $t \rightarrow y_0$, we deduce that for $|t - y_0|$ small enough, we have

$$\left| \frac{(1-t)}{x_t^*}(S_t - d^*) \right| \leq 2(1 - y_0 + \gamma) \|f\|_\infty.$$

The assumption (3.41) ensures that $\|f\|_\infty \leq \frac{2\gamma}{1 - y_0 + \gamma}$ and then we obtain

$$\left| \frac{(1-t)}{x_t^*}(S_t - d^*) \right| \leq 4\gamma$$

and therefore, for $|t - y_0|$ small enough,

$$(3.69) \quad 1 - \frac{(1-t)}{x_t^*}(S_t - d^*) \geq 1 - 4\gamma > 0.$$

Hence τ_t is well defined by (3.68) for $|t - y_0|$ small enough. Moreover, when $t \rightarrow y_0$, we have

$$(3.70) \quad \begin{aligned} R_t &\rightarrow -(1 - y_0)g(y_0) \\ S_t &\rightarrow x^* f(x^*) \end{aligned}$$

Thus, there exists $\dot{x}^* \in \mathbb{R}$ such that

$$(3.71) \quad \tau_t \rightarrow \dot{x}^* \quad \text{as } t \rightarrow y_0$$

and we deduce from (3.68) and (3.70) that \dot{x}^* satisfies

$$(3.72) \quad \dot{x}^* = \frac{1 - d^* - (1 - y_0)g(y_0)}{1 + (1 - y_0)(d^*/x^* - f(x^*))}$$

Now, we turn to the differentiability of \hat{u} and \hat{w} . We define

$$(3.73) \quad \begin{aligned} d_{1,t} &= \frac{\hat{u} - u}{h} = \frac{u_t(\varphi_{x_t^*}) - u}{h}, \\ d_{2,t} &= \frac{\hat{w} - w}{h} = \frac{w_t(\phi_t) - w}{h}, \quad \text{with } h = t - y_0. \end{aligned}$$

The function $d_{1,t} \in H^2(0, x^*)$ satisfies

$$(3.74) \quad \begin{aligned} -\partial_x \left(\frac{1}{\varphi'_{x_t^*}} \partial_x d_{1,t} \right) - \partial_x \left(\frac{1}{h} \left(\frac{1}{\varphi'_{x_t^*}} - 1 \right) \partial_x u \right) &= \frac{1}{h} \left(\varphi'_{x_t^*} f(\varphi_{x_t^*}) - f \right) \text{ in } (0, x^*) \\ d_{1,t}(0) &= d_{1,t}(x^*) = 0 \end{aligned}$$

From (3.50), (3.71), we deduce that

$$(3.75) \quad \left\| \frac{1}{h} \left(\frac{1}{\varphi'_{x_t^*}} - 1 \right) + \dot{x}^* \frac{d\varphi'_s}{ds} \Big|_{s=x^*} \right\|_{L^\infty(0, x^*)} \longrightarrow 0 \quad \text{as } t \rightarrow y_0$$

$$(3.76) \quad \left\| \frac{1}{h} \left(\varphi'_{x_t^*} f(\varphi_{x_t^*}) - f \right) - \dot{x}^* \frac{d}{ds} (\varphi'_s f(\varphi_s)) \Big|_{s=x^*} \right\|_{L^\infty(0, x^*)} \longrightarrow 0 \quad \text{as } t \rightarrow y_0$$

As a result, we deduce from (3.74) that for $|t - y_0|$ small enough,

$$\|d_{1,t}\|_{H^2(0, x^*)} \leq C$$

where $C > 0$ does not depend on t . Thus, there exists a subsequence $t_n \rightarrow y_0$ and $\dot{u} \in H^2(0, x^*)$ such that $d_{1,t_n} \rightharpoonup \dot{u}$ weakly in H^2 and \dot{u} satisfies

$$(3.77) \quad \begin{aligned} -\partial_{xx} \dot{u} + \dot{x}^* \partial_x \left(\frac{d\varphi'_s}{ds} \Big|_{s=x^*} \partial_x u \right) &= \dot{x}^* \frac{d}{ds} (\varphi'_s f(\varphi_s)) \Big|_{s=x^*} \text{ in } (0, x^*) \\ \dot{u}(0) &= \dot{u}(x^*) = 0 \end{aligned}$$

Using the fact that $u \in H^3(0, x^*)$ and $-\partial_{xxx} u = \partial_x f$ in $(0, x^*)$, we obtain by straightforward calculations that

$$\partial_x \left(\frac{d\varphi'_s}{ds} \Big|_{s=x^*} \partial_x u \right) - \frac{d}{ds} (\varphi'_s f(\varphi_s)) \Big|_{s=x^*} = \partial_{xx} \left((\partial_x u) \frac{d\varphi_s}{ds} \Big|_{s=x^*} \right) \text{ in } (0, x^*)$$

Then (3.77) becomes

$$(3.78) \quad \begin{aligned} -\partial_{xx} \dot{u} &= -\dot{x}^* \partial_{xx} \left((\partial_x u) \frac{d\varphi_s}{ds} \Big|_{s=x^*} \right) \text{ in } (0, x^*) \\ \dot{u}(0) &= \dot{u}(x^*) = 0 \end{aligned}$$

In addition it can be proved that the whole sequence $d_{1,t}$ is converging to \dot{u}^* .

The function $d_{2,t} \in H^2(y_0, 1)$ satisfies

$$(3.79) \quad \begin{aligned} -\partial_y \left(\frac{1}{\phi'_t} \partial_y d_{2,t} \right) - \partial_y \left(\frac{1}{h} \left(\frac{1}{\phi'_t} - 1 \right) \partial_y w \right) &= \frac{1}{h} (\phi'_t g(\phi_t) - g) \text{ in } (y_0, 1) \\ d_{2,t}(1) &= 0 \end{aligned}$$

$$\begin{aligned}
(3.80) \quad & \frac{1}{\varphi'_{x_t^*}(x^*)} \partial_x d_{1,t}(x^*) + \frac{1}{h} \left(\frac{1}{\varphi'_{x_t^*}(x^*)} - 1 \right) \partial_x u(x^*) \\
& = \frac{1}{\phi'_t(y_0)} \partial_y d_{2,t}(y_0) + \frac{1}{h} \left(\frac{1}{\phi'_t(y_0)} - 1 \right) \partial_y w(y_0)
\end{aligned}$$

Moreover, we have that

$$(3.81) \quad \left\| \frac{1}{h} \left(\frac{1}{\phi'_t} - 1 \right) + \frac{d\phi'_t}{dt} \Big|_{t=y_0} \right\|_{L^\infty(y_0,1)} \longrightarrow 0 \quad \text{as } t \rightarrow y_0$$

$$(3.82) \quad \left\| \frac{1}{h} (\phi'_t g(\phi_t) - g) - \frac{d}{dt} (\phi'_t g(\phi_t)) \Big|_{t=y_0} \right\|_{L^\infty(y_0,1)} \longrightarrow 0 \quad \text{as } t \rightarrow y_0$$

Proceeding as for the proof of the continuity of $c_{2,t}$ (see (3.61)–(3.64)), we deduce from (3.79) that there exists $\dot{w} \in H^2(y_0, 1)$ such that $d_{2,t} \rightharpoonup \dot{w}$ weakly in H^2 as $t \rightarrow y_0$ and \dot{w} satisfies

$$(3.83) \quad \begin{aligned} -\partial_{yy} \dot{w} + \partial_y \left(\frac{d\phi'_t}{dt} \Big|_{t=y_0} \partial_y w \right) &= \frac{d}{dt} (\phi'_t g(\phi_t)) \Big|_{t=y_0} \quad \text{in } (y_0, 1) \\ \dot{w}(1) &= 0 \end{aligned}$$

Using the fact that $w \in H^3(y_0, 1)$ and $-\partial_{yyy} w = \partial_y g$ in $(y_0, 1)$, we obtain by straightforward calculations that

$$\partial_y \left(\frac{d\phi'_t}{dt} \Big|_{t=y_0} \partial_y w \right) - \frac{d}{dt} (\phi'_t g(\phi_t)) \Big|_{t=y_0} = \partial_{yy} \left((\partial_y w) \frac{d\phi_t}{dt} \Big|_{t=y_0} \right) \quad \text{in } (y_0, 1)$$

Then (3.83) becomes

$$(3.84) \quad \begin{aligned} -\partial_{yy} \dot{w} &= -\partial_{yy} \left((\partial_y w) \frac{d\phi_t}{dt} \Big|_{t=y_0} \right) \quad \text{in } (y_0, 1) \\ \dot{w}(1) &= 0 \end{aligned}$$

Finally, (3.80) leads to

$$(3.85) \quad \begin{aligned} \partial_x \dot{u}(x^*) - \dot{x}^* \frac{d}{ds} (\varphi'_s(x^*)) \Big|_{s=x^*} \partial_x u(x^*) \\ = \partial_y \dot{w}(y_0) - \frac{d}{dt} (\phi'_t(y_0)) \Big|_{t=y_0} \partial_y w(y_0) \end{aligned}$$

The proof of Proposition 3.3 is then complete. \square

Remark 3.4. Due to the compactness of the embedding of $H^2(0, x^*) \times H^2(y_0, 1)$ into $C^1([0, x^*]) \times C^1([y_0, 1])$, Proposition 3.3 ensures that the map $t \mapsto (u_t \circ \varphi_{x_t^*}, w_t \circ \phi_t) \in C^1([0, x^*]) \times C^1([y_0, 1])$ is (strongly) differentiable at $t = y_0$.

Now, we are in position to compute the shape derivative of the solution of (3.1)–(3.4). We first extend the solution (u_t, w_t) of (3.40) to the whole real line : $u_t \in H_0^1(0, x^*)$ is extended to 0 outside the interval $(0, x^*)$, so that we consider $u_t \in H^1(\mathbb{R})$. In the same way, $w_t \in H^1(y_0, 1)$ is extended to 0 outside $(y_0, 1)$ so that we consider $w_t \in L^2(\mathbb{R})$.

Proposition 3.5. *Under the hypothesis of Proposition 3.3, the map $t \mapsto (u_t, w_t) \in L^2(\mathbb{R}) \times L^2(\mathbb{R})$ is differentiable at $t = y_0$. The shape derivatives $(u', w') \in H^2(0, x^*) \times H^2(y_0, 1)$ are given by*

$$(3.86) \quad \begin{aligned} u' &= \dot{u} - \dot{x}^* (\partial_x u) \frac{d\varphi_s}{ds} \Big|_{s=x^*} \quad \text{in } (0, x^*) \\ w' &= \dot{w} - (\partial_y w) \frac{d\phi_t}{dt} \Big|_{t=y_0} \quad \text{in } (y_0, 1) \end{aligned}$$

and satisfy

$$(3.87) \quad \begin{aligned} \partial_{xx} u' &= 0 \quad \text{in } (0, x^*) \\ u'(0) &= 0 \end{aligned}$$

$$(3.88) \quad u'(x^*) = -\dot{x}^* \partial_x u(x^*)$$

$$(3.89) \quad \begin{aligned} \partial_{yy} w' &= 0 \quad \text{in } (y_0, 1) \\ w'(1) &= 0 \end{aligned}$$

$$(3.90) \quad w'(y_0) = \dot{x}^* - 1 - \partial_y w(y_0)$$

$$(3.91) \quad \partial_y w'(y_0) - g(y_0) = \partial_x u'(x^*) - \dot{x}^* f(x^*)$$

Proof. The proof is a direct consequence of the derivability of \hat{u} and \hat{w} stated in Proposition (3.3) (see also [8, Proposition 2.32] and [6, Lemme 5.3.3]). We start from the relations

$$(3.92) \quad \begin{aligned} u_t &= (u_t \circ \varphi_{x_t^*}) \circ \varphi_{x_t^*}^{-1} = \hat{u} \circ \varphi_{x_t^*}^{-1} \\ w_t &= (w_t \circ \phi_t) \circ \phi_t^{-1} = \hat{w} \circ \phi_t^{-1}. \end{aligned}$$

The derivability of u_t and w_t with respect to t at $t = y_0$ is a direct consequence of the derivability of $t \mapsto (\hat{u}, \hat{w}, x_t^*)$ established in Proposition 3.3. We denote by (u', w') the derivative of $t \mapsto (u_t, w_t)$ at $t = y_0$. Differentiating (3.92) with t , we obtain at $t = y_0$:

$$\begin{aligned} u' &= \dot{u} - \dot{x}^* (\partial_x u) \frac{d\varphi_s}{ds} \Big|_{s=x^*} \in H^1(0, x^*) \\ w' &= \dot{w} - (\partial_y w) \frac{d\phi_t}{dt} \Big|_{t=y_0} \in H^1(y_0, 1) \end{aligned}$$

According to Proposition 3.3, we have that $(u', w') \in H^2(0, x^*) \times H^2(y_0, 1)$ and from (3.45), we deduce that (3.87), (3.88), (3.89) hold. Relation (3.46) yields (3.91). Finally, differentiating the relation $x_t^* = t + w_t(t)$ in (3.40) leads to (3.90). \square

We define the energy functional J associated to the solution (u_t, w_t, x_t^*) of (3.40) by

$$(3.93) \quad J(t) = \int_0^{x_t^*} |\partial_x u_t|^2 dx + \eta \int_t^1 |\partial_y w_t|^2 dy.$$

From Proposition 3.5, we deduce the following differentiability result for the function J .

Proposition 3.6. *Under the hypothesis of Proposition 3.3, the functional $t \mapsto J(t)$ is differentiable at $t = y_0$ and its derivative at $t = y_0$ is given by*

$$(3.94) \quad J'(y_0) = (\partial_y w(y_0))^2 (1 + \partial_y w(y_0) - \eta) \\ + \partial_y w'(y_0) \left((y_0 - 1)(\partial_y w(y_0))^2 - 2\eta w(y_0) \right)$$

with

$$(3.95) \quad \partial_y w'(y_0) = \frac{x^* g(y_0) - (1 + \partial_y w(y_0))(\partial_y w(y_0) + x^* f(x^*))}{(x^* + y_0 - 1)}.$$

Proof. From (3.1) and (3.2), we deduce that

$$(3.96) \quad J(t) = \int_0^{x_t^*} f u_t dx + \eta \int_t^1 g w_t dy - \eta w_t(t) \partial_y w_t(t).$$

According to the differentiability result established in Proposition 3.5 (see also Remark 3.4), we deduce that J is differentiable at $t = y_0$ and differentiating (3.96) at $t = y_0$ leads to

$$(3.97) \quad J'(y_0) = \int_0^{x^*} f u' dx + \underbrace{\dot{x}^* [f u]_0^{x^*}}_{=0} + \eta \int_{y_0}^1 g w' dy - \eta g(y_0) w(y_0) \\ - \eta \frac{d}{dt} \left(w_t(t) \partial_y w_t(t) \right) \Big|_{t=y_0}.$$

Moreover, we have

$$(3.98) \quad \begin{aligned} \frac{d}{dt} \left(w_t(t) \partial_y w_t(t) \right) \Big|_{t=y_0} &= \frac{d}{dt} \left(w_t(t) \right) \Big|_{t=y_0} \partial_y w(y_0) + w(y_0) \frac{d}{dt} \left(\partial_y w_t(t) \right) \Big|_{t=y_0} \\ &= (w'(y_0) + \partial_y w(y_0)) \partial_y w(y_0) \\ &\quad + w(y_0) (\partial_y w'(y_0) + \partial_{yy} w(y_0)) \\ &= w'(y_0) \partial_y w(y_0) + w(y_0) \partial_y w'(y_0) \\ &\quad + (\partial_y w(y_0))^2 - w(y_0) g(y_0) \end{aligned}$$

Combining (3.97) and (3.98), we obtain

$$(3.99) \quad J'(y_0) = \int_0^{x^*} f u' dx + \eta \int_{y_0}^1 g w' dy - \eta (\partial_y w(y_0))^2 \\ - \eta \left(w'(y_0) \partial_y w(y_0) + w(y_0) \partial_y w'(y_0) \right).$$

Moreover, using the regularity of u and u' with (3.88), we get

$$\begin{aligned}
\int_0^{x^*} f u' dx &= - \int_0^{x^*} (\partial_{xx} u) u' dx \\
&= \int_0^{x^*} \partial_x u \partial_x u' dx - u'(x^*) \partial_x u(x^*) \\
&= \int_0^{x^*} \partial_x u \partial_x u' dx + \dot{x}^* (\partial_x u(x^*))^2 \\
&= - \int_0^{x^*} u \underbrace{\partial_{xx} u'}_{=0} dx + \left[\underbrace{u \partial_x u'}_{=0} \right]_0^{x^*} + \dot{x}^* (\partial_x u(x^*))^2
\end{aligned}$$

Then, we have

$$(3.100) \quad \int_0^{x^*} f u' dx = \dot{x}^* (\partial_x u(x^*))^2.$$

Similarly, we obtain

$$\begin{aligned}
\int_{y_0}^1 g w' dy &= - \int_{y_0}^1 (\partial_{yy} w) w' dy \\
&= \int_{y_0}^1 \partial_y w \partial_y w' dy + w'(y_0) \partial_y w(y_0) \\
&= - \int_{y_0}^1 w \underbrace{\partial_{yy} w'}_{=0} dy + [w \partial_y w']_{y_0}^1 + w'(y_0) \partial_y w(y_0)
\end{aligned}$$

Then, we have

$$(3.101) \quad \int_{y_0}^1 g w' dy = -w(y_0) \partial_y w'(y_0) + w'(y_0) \partial_y w(y_0).$$

Relations (3.100), (3.101) with (3.4) in (3.99) lead to

$$(3.102) \quad J'(y_0) = (\dot{x}^* - \eta) (\partial_y w(y_0))^2 - 2\eta w(y_0) \partial_y w'(y_0)$$

From (3.90), we have $\dot{x}^* = 1 + w'(y_0) + \partial_y w(y_0)$ and then we can express the derivative $J'(y_0)$ as follows

$$(3.103) \quad J'(y_0) = (1 + w'(y_0) + \partial_y w(y_0) - \eta) (\partial_y w(y_0))^2 - 2\eta w(y_0) \partial_y w'(y_0)$$

Now, we derive a relation between $w'(y_0)$ and $\partial_y w'(y_0)$. For $y \in [y_0, 1]$, we introduce the function $\psi(y) = y - 1$ which satisfies $\partial_y \psi \equiv 1$ in $[y_0, 1]$ and $\psi(1) = 0$. Then, we write

$$\begin{aligned}
w'(y_0) &= - \int_{y_0}^1 \partial_y w'(y) \partial_y \psi(y) dy \\
&= \int_{y_0}^1 \underbrace{\partial_{yy} w'(y)}_{=0} \partial_y \psi(y) dy - [\partial_y w'(y) \psi(y)]_{y_0}^1 \\
&= \partial_y w'(y_0) \psi(y_0)
\end{aligned}$$

and thus we get

$$(3.104) \quad w'(y_0) = (y_0 - 1)\partial_y w'(y_0).$$

Combining (3.103) with (3.104), we obtain the desired formula (3.94).

Finally, we turn to the expression of $\partial_y w'(y_0)$ with respect to $\partial_y w(y_0)$. For $x \in [0, 1]$, we introduce the function $\psi(x) = x$ which satisfies $\partial_x \psi \equiv 1$ in $[0, 1]$ and $\psi(0) = 0$. Then, we write

$$\begin{aligned} u'(x^*) &= \int_0^{x^*} \partial_x u'(x) \partial_x \psi(x) dx \\ &= - \int_0^{x^*} \underbrace{\partial_{xx} u'(x)}_{=0} \partial_x \psi(x) dx + [\partial_x u'(x) \psi(x)]_0^{x^*} \\ &= \partial_x u'(x^*) \psi(x^*) \end{aligned}$$

and thus we have

$$(3.105) \quad u'(x^*) = x^* \partial_x u'(x^*).$$

Combining (3.91) with (3.104), (3.105), (3.88) and (3.90), we obtain the desired formula (3.95) for $\partial_y w'(y_0)$. \square

3.5. An explicit optimal solution. We study in details the particular case where $f \equiv 1$ and $g \equiv \alpha \in \mathbb{R}$. The solution of Problem (3.1)–(3.4) is then given by

$$(3.106) \quad u(x) = -\frac{1}{2}x(x - x^*), \quad x \in (0, x^*)$$

$$(3.107) \quad w(y) = \left(c_0 - \frac{\alpha}{2}(y - 1)\right)(y - 1), \quad y \in (y_0, 1)$$

with

$$(3.108) \quad c_0 = -\frac{\alpha(1 - y_0)(3 + y_0) + 2y_0}{2(1 + y_0)}$$

and

$$(3.109) \quad x^* = 2(\alpha(y_0 - 1) - c_0) = \frac{\alpha(1 - y_0)^2 + 2y_0}{1 + y_0}.$$

In order to ensure that x^* lies in the interval $(0, 1)$, we have to restrict the values of y_0 and α . More precisely, we have that

$$\begin{aligned} x^* \in (0, 1) &\Leftrightarrow \alpha \in I_0 = \left(\frac{-2y_0}{(1 - y_0)^2}, \frac{1}{1 - y_0}\right) \\ &\Leftrightarrow y_0 \in I_\alpha = \begin{cases} \left(\frac{\alpha - 1 + \sqrt{1 - 2\alpha}}{\alpha}, 1\right) & \text{if } \alpha < 0 \\ \left(\max(0, 1 - \frac{1}{\alpha}), 1\right) & \text{if } \alpha \geq 0 \end{cases} \end{aligned}$$

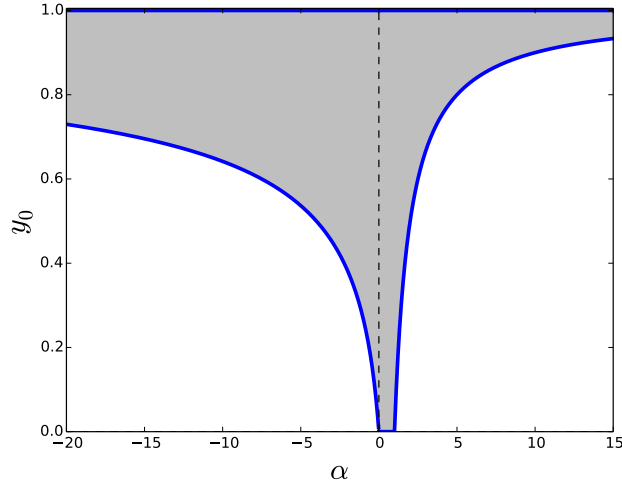


FIGURE 4. The admissible domain \mathcal{D} (gray region) for the 1d case with $f \equiv 1$ and $g \equiv \alpha$.

Then, we define the admissible domain \mathcal{D} where the parameters (y_0, α) are allowed to lie for ensuring $x^* \in (0, 1)$:

$$(3.110) \quad \mathcal{D} = \{(y_0, \alpha) \in (0, 1) \times \mathbb{R}, y_0 \in I_\alpha\}.$$

The admissible domain \mathcal{D} is drawn in Figure 4.

We recall that the energy functional J is given by

$$(3.111) \quad J(y_0) = \int_0^{x^*} |\partial_x u|^2 dx + \eta \int_{y_0}^1 |\partial_y w|^2 dy$$

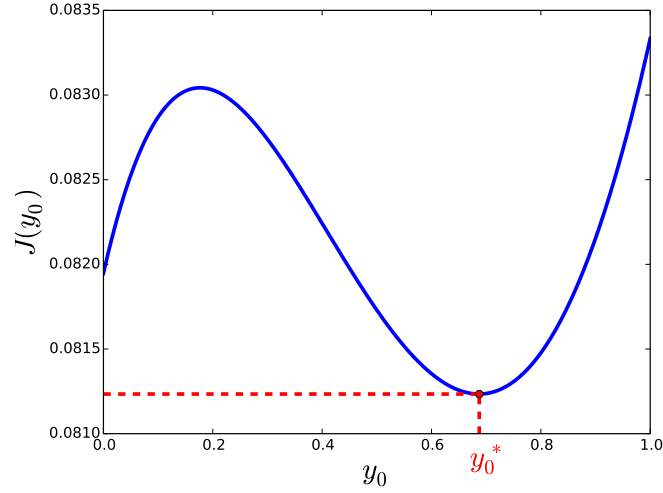
with a parameter $\eta > 0$. Let $\alpha \in \mathbb{R}$ be fixed. The shape optimization problem consists in finding the reference point y_0 that minimizes

$$(3.112) \quad \min_{y_0 \in I_\alpha} J(y_0).$$

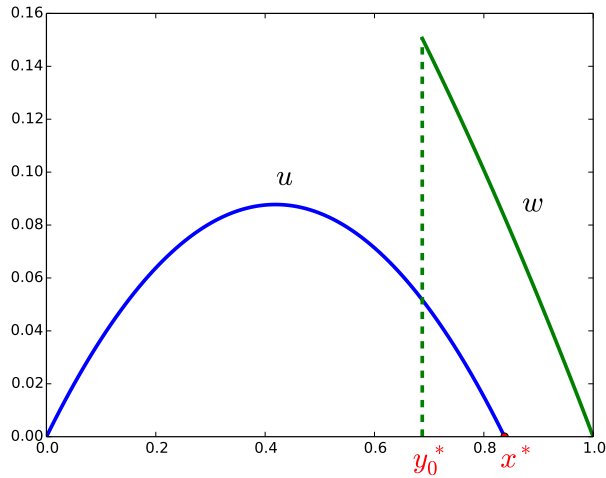
Using the explicit formula (3.106)–(3.109), we obtain

$$(3.113) \quad J(y_0) = \left(2 - \frac{\eta}{\alpha}\right) \frac{(x^*)^3}{24} - \frac{\eta}{3\alpha} c_0^3$$

where x^* and c_0 are given by (3.108) and (3.109). This formula provides a fully explicit expression of the functional J with y_0 . The derivative $J'(y_0)$ of the functional with respect to y_0 can be computed exactly as well as the optimal value y_0^* that minimizes J . It can be checked that this direct calculation coincides with the general formula (3.94),(3.95) given in Proposition 3.6. In the sequel, we do not give this expression for $J'(y_0)$, we only consider a numerical example of an optimal solution.

FIGURE 5. The energy functional $y_0 \mapsto J(y_0)$

Numerical example. We choose $\alpha = 0.4$ and $\eta = 0.442$. The energy functional $J(y_0)$ is depicted on Figure 5. The minimum of $J(y_0)$ is reached at $y_0^* \simeq 0.6868$. The corresponding optimal point x^* is equal to $x^* \simeq 0.8376$. The optimal solutions u and w are drawn on Figure 6.

FIGURE 6. The optimal solutions u and w .

4. CONCLUSION

We have introduced a new class of shape optimization problems for the fluid-structure interaction. We have shown that such a shape optimization problem for a simplified model in one spatial dimension is well posed. The open problem is if the proposed approach can be extended to the same model but in two spatial dimensions. In particular if there are the material derivatives of solutions to the free boundary problem under considerations. This issue is subject of the current studies and we hope to have constructive numerical results in the near future.

REFERENCES

- [1] V. Barbu, Optimal control of variational inequalities, Research Notes in Mathematics 100, Pitman (Advanced Publishing Program), Boston, MA, 1984, iv+298 pages
- [2] Avner Friedman, Variational principles and free-boundary problems, Second Edition, Robert E. Krieger Publishing Co., Inc., Malabar, FL, 1988, x+710 pages
- [3] D. Kinderlehrer, G. Stampacchia, An introduction to variational inequalities and their applications, Classics in Applied Mathematics 31, Reprint of the 1980 original, Society for Industrial and Applied Mathematics (SIAM), Philadelphia, PA, 2000, xx+313 pages
- [4] G. P. Galdi, M. Kyed, Steady flow of a Navier-Stokes liquid past an elastic body, Arch. Ration. Mech. Anal. 194 (2009), no. 3, 849–875.
- [5] C. Grandmont, Existence for a three-dimensional steady state fluid-structure interaction problem, J. Math. Fluid Mech., 4 (2002), no. 1, 76–94.
- [6] A. Henrot, M. Pierre, Variation et optimisation de formes: Une analyse géométrique. Mathématiques et Applications, vol. 48. Springer Berlin Heidelberg, 2005.
- [7] I. Lasiecka, K. Szulc, A. Żochowski, Linearised coupling of elasticity and Navier-Stokes equations, 20th International Conference on Methods and Models in Automation and Robotics (MMAR) (2015), 208–210.
- [8] J. Sokołowski, J.P. Zolésio, Introduction to shape optimization: shape sensitivity analysis, Springer-Verlag, 1992.
- [9] C. Surulescu, On the stationary motion of a Stokes fluid in a thick elastic tube: a 3D/3D interaction problem, Acta Math. Univ. Comenianae, Vol. LXXV, 1 (2006), 95–106.

(J.-F. Scheid) INSTITUT ELIE CARTAN DE LORRAINE, UNIVERSITÉ DE LORRAINE
FRANCE, CNRS UMR7502, FRANCE & SPHINX INRIA NANCY - GRAND EST
E-mail address: Jean-Francois.Scheid@univ-lorraine.fr

(J. Sokolowski) INSTITUT ELIE CARTAN DE LORRAINE, UNIVERSITÉ DE LORRAINE
FRANCE, CNRS UMR7502, FRANCE
E-mail address: Jan.Sokolowski@univ-lorraine.fr