



HAL
open science

THE CSNE (Canal Seine-Nord Europe) PROJECT

Sylvain Rassat, Caroline Font, Aurélien Bolo, Sylvain Mazet, Guillaume Hulin, Alexia Fontaine, Emmanuelle Collado, Estelle Belay

► **To cite this version:**

Sylvain Rassat, Caroline Font, Aurélien Bolo, Sylvain Mazet, Guillaume Hulin, et al.. THE CSNE (Canal Seine-Nord Europe) PROJECT. Fusion of Cultures. Proceedings of the 38th Annual Conference on Computer Applications and Quantitative Methods in Archaeology, Granada, Spain, April 2010, Apr 2010, grenade, Spain. British Archaeological Reports, 2013, Fusion of Cultures. Proceedings of the 38th Annual Conference on Computer Applications and Quantitative Methods in Archaeology, Granada, Spain, April 2010. hal-01449026

HAL Id: hal-01449026

<https://hal.science/hal-01449026>

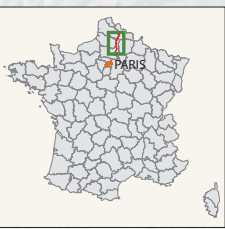
Submitted on 31 Jan 2017

HAL is a multi-disciplinary open access archive for the deposit and dissemination of scientific research documents, whether they are published or not. The documents may come from teaching and research institutions in France or abroad, or from public or private research centers.

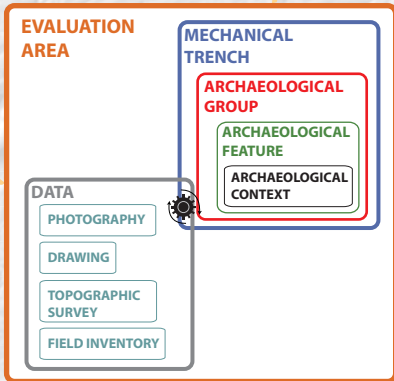
L'archive ouverte pluridisciplinaire **HAL**, est destinée au dépôt et à la diffusion de documents scientifiques de niveau recherche, publiés ou non, émanant des établissements d'enseignement et de recherche français ou étrangers, des laboratoires publics ou privés.

THE CSNE (Canal Seine-Nord Europe) PROJECT

In 2013, a 106 km long channel managed by VNF - Voies Navigables de France - will link the fluvial system of the Seine River to the northern Europe channel system in order to increase the fluvial transportation. Sixty archaeologists are working since 2008 on the area concerned by the channel and other infrastructures (platforms, bridges, etc.): 10 % of the 2500 hectares has to be studied making the project carried out by Inrap - Institut National de Recherches Archéologiques Préventives - the biggest preventive project ever made in Europe.

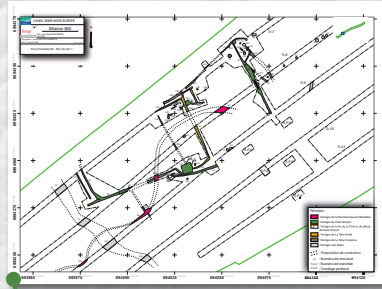


DATA MANAGEMENT SYSTEM



In order to deal with the important amount of results, a data management system has been created with a specific architecture to store.

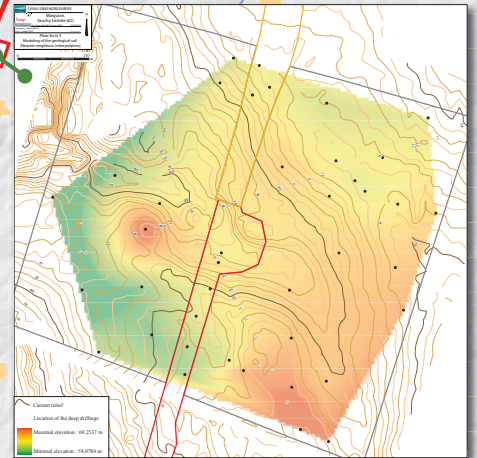
HIGH PRECISION SYSTEM



All the archaeological data are stored in a database and linked to ArcGIS™. The GIS structure begins in AutoCAD Map™.



During the evaluation phase, all the archaeological data are recorded with a GPS.

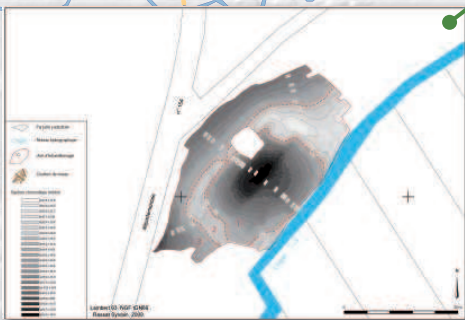


Studies are the result of the collaboration between archaeologists and GIS operators.

EXPERIMENTATION

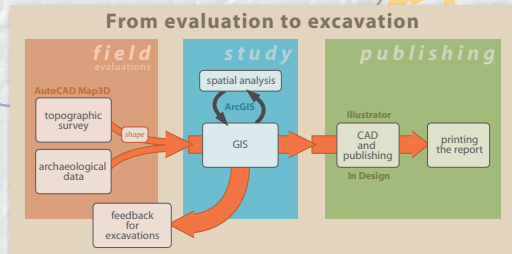


New support (PC Tablet) of recording are tested directly on the field in an Access™ database.



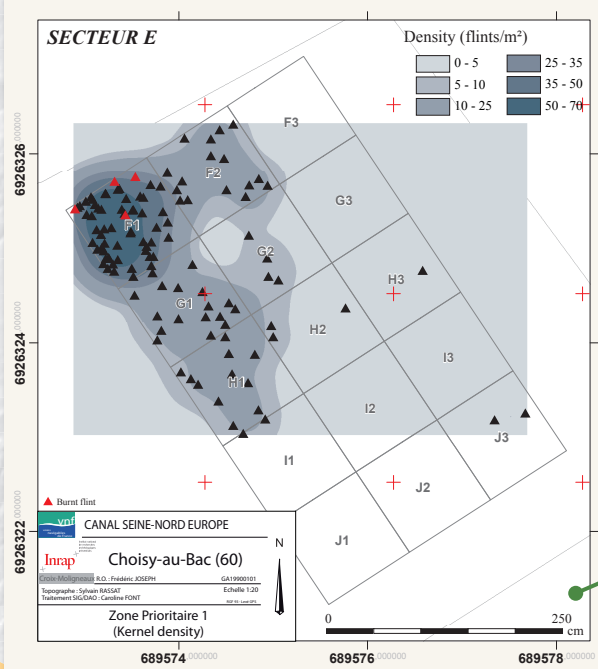
For a detailed study, micro topography can be realized using two GPS (Differential GPS).

REFLEXIONS ON METHODS



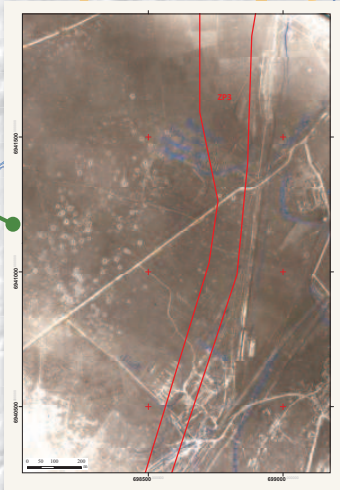
A new schema of working has been created in order to implicate every single actor in the archaeological process.

SPATIAL ANALYSIS ON A MESOLITHIC SITE (Distribution of flints)



Different scales of time and surface are aborbed.

GEOREFERENCING OLD DATA



With old aerial photographs of the 1914-18 world war, archaeologists can anticipate the risk involved by this war.

The CSNE Project is involved in national searches and experimentations on GIS in Inrap. All this work is still in progress.