



HAL
open science

Implementing and Innovating Marine Monitoring Approaches for Assessing Marine Environmental Status.

Roberto Danovaro, Laura Carugati, Berzano Marco, Abigail E. Cahill, Susana de Carvalho Spinola, Anne Chenuil, Cinzia Corinaldesi, Cristina Sonia, Romain David, Antonio Dell'Anno, et al.

► To cite this version:

Roberto Danovaro, Laura Carugati, Berzano Marco, Abigail E. Cahill, Susana de Carvalho Spinola, et al.. Implementing and Innovating Marine Monitoring Approaches for Assessing Marine Environmental Status.. *Frontiers in Marine Science*, 2016, 3, pp.213. 10.3389/fmars.2016.00213 . hal-01448726

HAL Id: hal-01448726

<https://hal.science/hal-01448726>

Submitted on 28 Jan 2017

HAL is a multi-disciplinary open access archive for the deposit and dissemination of scientific research documents, whether they are published or not. The documents may come from teaching and research institutions in France or abroad, or from public or private research centers.

L'archive ouverte pluridisciplinaire **HAL**, est destinée au dépôt et à la diffusion de documents scientifiques de niveau recherche, publiés ou non, émanant des établissements d'enseignement et de recherche français ou étrangers, des laboratoires publics ou privés.

Author's Proof

Carefully read the entire proof and mark all corrections in the appropriate place, using the Adobe Reader commenting tools ([Adobe Help](#)). Do not forget to reply to the queries.

We do not accept corrections in the form of edited manuscripts.

In order to ensure the timely publication of your article, please submit the corrections within 48 hours.

If you have any questions, please contact science.production.office@frontiersin.org.

Author Queries Form

Q1	We have ignored the below author comment in line no. 920, since it is against our journal style. Please confirm if this is fine.	
Q2	Please confirm whether edits made the authors names in Author contribution section is fine.	



Implementing and Innovating Marine Monitoring Approaches for Assessing Marine Environmental Status

OPEN ACCESS

Edited by:

Jacob Carstensen,
Aarhus University, Denmark

Reviewed by:

Matthias Obst,
University of Gothenburg, Sweden
Jo Høkedal,
Østfold University College, Norway

*Correspondence:

Roberto Danovaro
r.danovaro@univpm.it
Laura Carugati
l.carugati@univpm.it

†These authors have contributed
equally to this work.

Specialty section:

This article was submitted to
Marine Ecosystem Ecology,
a section of the journal
Frontiers in Marine Science

Received: 14 June 2016

Accepted: 14 October 2016

Published: xx November 2016

Citation:

Danovaro R, Carugati L, Berzano M,
Cahill AE, Carvalho S, Chenuil A,
Corinaldesi C, Cristina S, David R,
Dell'Anno A, Dzhenbekova N,
Garcés E, Gasol JM, Goela P,
Féral J-P, Ferrera I, Forster RM,
Kurekin AA, Rastelli E, Marinova V,
Miller PI, Moncheva S, Newton A,
Pearman JK, Pitois SG, Reñé A,
Rodríguez-Ezpeleta N, Saggiomo V,
Simis SGH, Stefanova K, Wilson C, Lo
Martire M, Greco S, Cochrane SKJ,
Mangoni O and Borja A (2016)
Implementing and Innovating Marine
Monitoring Approaches for Assessing
Marine Environmental Status.
Front. Mar. Sci. 3:213.
doi: 10.3389/fmars.2016.00213

Roberto Danovaro^{1,2*†}, Laura Carugati^{1*†}, Marco Berzano¹, Abigail E. Cahill^{3,4},
Susana Carvalho⁵, Anne Chenuil³, Cinzia Corinaldesi¹, Sonia Cristina^{6,7}, Romain David³,
Antonio Dell'Anno¹, Nina Dzhenbekova⁸, Esther Garcés⁹, Joseph M. Gasol⁹,
Priscila Goela^{6,7}, Jean-Pierre Féral³, Isabel Ferrera⁹, Rodney M. Forster¹⁰,
Andrey A. Kurekin¹¹, Eugenio Rastelli^{1,2}, Veselka Marinova⁸, Peter I. Miller¹¹,
Snejana Moncheva⁸, Alice Newton⁶, John K. Pearman⁵, Sophie G. Pitois¹², Albert Reñé⁹,
Naiara Rodríguez-Ezpeleta¹³, Vincenzo Saggiomo², Stefan G. H. Simis^{11,14},
Kremena Stefanova⁸, Christian Wilson¹⁵, Marco Lo Martire^{16,17}, Silvestro Greco¹⁸,
Sabine K. J. Cochrane¹⁹, Olga Mangoni²⁰ and Angel Borja¹³

¹ Dipartimento di Scienze della Vita e dell'Ambiente, Università Politecnica delle Marche, Ancona, Italy, ² Stazione Zoologica "A. Dohrn", Napoli, Italy, ³ Centre National de la Recherche Scientifique, Institut Méditerranéen de Biodiversité et d'Ecologie Marine et Continentale, Aix Marseille Université, IRD, Avignon Université, Marseille, France, ⁴ Biology Department, Albion College, Albion, MI, USA, ⁵ King Abdullah University of Science and Technology, Red Sea Research Center, Thuwal, Saudi Arabia, ⁶ Centre for Marine and Environmental Research (CIMA), FCT, University of Algarve, Faro, Portugal, ⁷ Sagremarisco Lda, Vila do Bispo, Portugal, ⁸ Institute of Oceanology, Bulgarian Academy of Sciences, Varna, Bulgaria, ⁹ Institut de Ciències del Mar-CSIC, ICM-CSIC, Pg Marítim de la Barceloneta, Barcelona, Spain, ¹⁰ Institute of Estuarine and Coastal Studies, University of Hull, Hull, UK, ¹¹ Plymouth Marine Laboratory, Prospect Place, The Hoe, Plymouth, UK, ¹² Fish Behaviour Team, CEFAS Laboratory, Suffolk, UK, ¹³ AZTI, Marine Research Division, Pasaia, Spain, ¹⁴ Finnish Environment Institute (SYKE), Marine Research Centre, Helsinki, Finland, ¹⁵ OceanDTM, Riverside Business Centre, Suffolk, UK, ¹⁶ Consorzio Nazionale Interuniversitario per le Scienze del Mare (CoNISMA), Ancona, Italy, ¹⁷ EcoReach SRL, Ancona, Italy, ¹⁸ Istituto Superiore per la Protezione e la Ricerca Ambientale, Roma, Italy, ¹⁹ Akvaplan-niva AS, Fram Centre, Tromsø, Norway, ²⁰ Dipartimento di Biologia, Università degli Studi di Napoli Federico II, Napoli, Italy

Marine environmental monitoring has tended to focus on site-specific methods of investigation. These traditional methods have low spatial and temporal resolution and are relatively labor intensive per unit area/time that they cover. To implement the Marine Strategy Framework Directive (MSFD), European Member States are required to improve marine monitoring and design monitoring networks. This can be achieved by developing and testing innovative and cost-effective monitoring systems, as well as indicators of environmental status. Here, we present several recently developed methodologies and technologies to improve marine biodiversity indicators and monitoring methods. The innovative tools are discussed concerning the technologies presently utilized as well as the advantages and disadvantages of their use in routine monitoring. In particular, the present analysis focuses on: (i) molecular approaches, including microarray, Real Time quantitative PCR (qPCR), and metagenetic (metabarcoding) tools; (ii) optical (remote sensing and acoustic methods; and (iii) *in situ* monitoring instruments. We also discuss

115 their applications in marine monitoring within the MSFD through the analysis of case 172
116 studies in order to evaluate their potential utilization in future routine marine monitoring. 173
117 We show that these recently-developed technologies can present clear advantages in 174
118 accuracy, efficiency and cost. 175
119

120 **Keywords:** marine monitoring, marine strategy framework directive, marine biodiversity, molecular approaches, 177
121 *in situ* monitoring 178
122

123 INTRODUCTION 124

125 Marine ecosystems are subject to a multitude of direct human 180
126 pressures, such as overexploitation, eutrophication, pollution and 181
127 species introductions (Halpern et al., 2008; Hoegh-Guldberg and 182
128 Bruno, 2010; Burrows et al., 2011), including the effects of global 183
129 impacts, namely ocean acidification and climate change (Doney 184
130 et al., 2012). These stressors can have synergistic effects on marine 185
131 ecosystems (Mora et al., 2013; Griffen et al., 2016), altering their 186
132 functioning and ability to provide goods and services (Worm 187
133 et al., 2006; Crain et al., 2008). Their impact is expected to 188
134 be even stronger in enclosed and semi-enclosed basins with 189
135 high population density, tourism flow and maritime activities 190
136 (Danovaro, 2003). Improved knowledge on the consequences 191
137 of the effects of multiple stressors on marine biodiversity 192
138 and ecosystem functioning is urgently required (Danovaro and 193
139 Pusceddu, 2007; Zeidberg and Robison, 2007; Danovaro et al., 194
140 2008; Nôges et al., 2016; Zeppilli et al., 2016). In 2008, the 195
141 European Commission enacted the Marine Strategy Framework 196
142 Directive (MSFD; 2008/56/EC), which aims to manage the 197
143 European seas by using an ecosystem-based approach in order to 198
144 gain a healthy and productive state (so called good environmental 199
145 status; GES; see **Box 1** for the list of acronyms) (Borja et al., 200
146 2013). 201

147 The MSFD particularly aims at investigating the functioning 202
148 of ecosystems (Cardoso et al., 2010; Borja et al., 2011), making 203
149 a shift from structural, site-specific approaches to a functional, 204
150 whole-sea system of monitoring (Borja and Elliott, 2013). 205
151 An overarching aim is to promote regional harmonization of 206
152 monitoring methods, used to assess marine environmental health 207
153 and to obtain complete and long-term datasets from multiple 208
154 ecosystem components, ranging from microbes to large marine 209
155 mammals (Caruso et al., 2015). 210

156 Traditional methods applied to analyse marine biodiversity 211
157 (e.g., morphological species identification, laboratory culture, 212
158 toxicological analyses) are based on morphological identification 213
159 and observational surveys, which are costly, time consuming 214
160 and characterized by low upscaling potential to resolve 215
161 change. One of the most evident limitations of traditional 216
162 approaches is the identification and quantification of rare 217
163 species and the ability to distinguish morphologically 218
164 close or identical species (i.e., cryptic species), or poorly 219
165 characterized juvenile stages of known species. Recently 220
166 developed technologies present a wide variety of advantages 221
167 including a higher taxonomic resolution and the capability to 222
168 rapidly provide, often in near real time, information regarding 223
169 wide geographic areas (remote sensing) or large temporal 224
170 scales (e.g., autonomous observation platforms—buoys, 225
171 226
227
228

moorings, ships-of-opportunity). As a result, the technological 180
advancement is evolving in two main directions: (i) innovative 181
molecular approaches for rapid biodiversity assessment (Bourlat 182
et al., 2013); and (ii) autonomous and sensitive (optical) 183
sensor systems, which allow us to operate and collect data *in* 184
situ over wide spatial and temporal scales (She et al., 2016). 185
Methods able to combine both requirements are thus highly 186
desirable. 187

Innovative molecular technologies have fundamentally 188
changed our understanding of biodiversity, particularly for 189
microbes, rare species, “soft-species” or extremely small 190
specimens, which are difficult to identify and cryptic species (to 191
be studied combining molecular and morphological information; 192
e.g., Derycke et al., 2005; Sogin et al., 2006) and new sensors 193
and *in situ* technologies have already been applied to identify 194
new forms of life in remote deep-sea habitats (Danovaro et al., 195
2014). However, most of the approaches/tools still need to be 196
tested prior to their application in routine marine monitoring 197
(e.g., EU project DEVOTES *DEVELOPMENT Of innovative* 198
Tools for understanding marine biodiversity and assessing good 199
Environmental Status). In this overview, we investigate the 200
potential applications of various innovative tools and approaches 201
in order to evaluate their applicability to routine marine 202
monitoring, with a special focus on three main categories, 203
which seem to be the most promising: (i) molecular approaches; 204
(ii) innovative systems for *in situ* analysis; and (iii) remote 205
sensing. 206
207
208

209 MOLECULAR APPROACHES TO ASSESS 210 211 MARINE BIODIVERSITY: FROM MICROBES 212 213 TO MACROFAUNA 214

Morphological identification of species is heavily dependent 215
on taxonomic experts, who are generally specialized on some 216
specific groups of organisms (McManus and Katz, 2009; Bacher, 217
2012), and in some cases, the identification is impossible (e.g., 218
cryptic and microbial species). Moreover, traditional taxonomy 219
is generally time-consuming (Bourlat et al., 2013; Carugati et al., 220
2015), making large-scale and intense monitoring programs 221
difficult to be undertaken. Molecular techniques are more 222
universal (e.g., can target a broader range of taxa in a single 223
analysis) and are less influenced by taxonomic expertise. Hence, 224
molecular approaches have the potential to contribute to a 225
large number of MSFD Descriptors (**Table 1**) and are promising 226
tools to analyse the biodiversity of different biotic components 227
(e.g., from prokaryotes, micro-eukaryotes to metazoans; **Table 2**), 228
to identify species with different phenotypes or through the

BOX 1 | LIST OF THE ACRONYMS USED.

Acronym	Definition
ACI	Acoustic Complexity Index
AMBI	AZTI Marine Biotic Index
ARMS	Autonomous Reef Monitoring Structure
ASU	Artificial Substrate Unit
AUV	Autonomous Underwater Vehicle
BLAST	Basic Local Alignment Search Tool
CALPS	Continuous Automated Litter and Plankton Sampler
CLEAN SEA	Continuous Long-term Environmental and Asset iNtegrity monitoring at SEA
COI	Cytochrome Oxidase c Subunit 1
CTD	Conductivity, Temperature, Depth
mtDNA	Mitochondrial Deoxyribonucleic Acid
rDNA	Ribosomal Deoxyribonucleic Acid
FCM	Flow Cytometry
GES	Good Environmental Status
HAB	Harmful Algal Bloom
HFNI	High Frequency Non-Invasive
HPLC	High-Performance Liquid Chromatography
HTS	High-Throughput Sequencing
MCZ	Marine Conservation Zone
MSFD	Marine Strategy Framework Directive
OHI	Ocean Health Index
OSD	Ocean Sampling Day
OTU	Operational Taxonomic Unit
PCR	Polymerase Chain Reaction
qPCR	Real Time Quantitative PCR
rRNA	Ribosomal Ribonucleic acid
ROV	Remotely Operated Vehicle
SST	Sea Surface Temperature

different stages of the life cycles (still unknown for the majority of marine species).

Use of Metabarcoding to Study Marine Biodiversity

The term “metabarcoding” refers to large-scale analyses of biodiversity through the amplification and sequencing of marker genes (e.g., 18S and 16S rDNA, Creer et al., 2010) and may also apply to capture-enrichment approach (Taberlet et al., 2012). Originally, most of the studies based on metabarcoding focused on prokaryotes (e.g., Sogin et al., 2006; Gilbert et al., 2009; Brazelton et al., 2010; Salazar et al., 2016), but, more recently, eukaryotes have also been investigated, including marine protists (e.g., Amaral-Zettler et al., 2009; Stoeck et al., 2010; Logares et al., 2014a; de Vargas et al., 2015; Massana et al., 2015) and metazoans (Thomsen et al., 2012; Lindeque et al., 2013; Hirai et al., 2015; Pearman and Irigoien, 2015). The development of high-throughput sequencing (HTS) technologies and of standardized procedures could allow metabarcoding analyses to be included in routine monitoring programmes (Visco et al., 2015; Zaiko et al., 2015a,b).

Morphology-based studies target a limited range of taxa (e.g., meiofauna or macrofauna). These biotic components host a potentially large number of cryptic and rare species (Ainsworth et al., 2010), which could be contextually detected using universal primers, targeting a broad range of taxa at the same time. This could lead to the incorporation of novel candidates for indicator

species. For example, Chariton et al. (2010) suggested that phyla such as *Kinorhyncha* could be sensitive to contamination and used as an indicator. Metabarcoding could also be applied to assess changes in community structure along a disturbance gradient (Hewitt et al., 2005), or to detect non-native transient species (Jerde et al., 2011; Dejean et al., 2012; Cowart et al., 2015; Viard et al., 2016), allowing for better planning and implementation of conservation approaches. An interesting potential development of molecular techniques is the detection of sequences of eukaryotes from ancient DNA, or from the extracellular DNA pools, which enable the comparison between living species and species that were present in the same area in the (even recent) past (Corinaldesi et al., 2008, 2011, 2014; Pearman et al., 2016b). In addition, the progressive reduction of the costs of sequencing over time makes large-scale metabarcoding more feasible (e.g., de Vargas et al., 2015; Salazar et al., 2016).

Although metabarcoding can represent a useful tool for the census of marine biodiversity, there are still different shortcomings and pitfalls that prevent its extensive use in marine monitoring programmes. Metabarcoding can indeed provide an inaccurate or wrong estimation (under/over estimation) of the actual biodiversity of the sample due to variability in primers, PCR conditions, sequencing technology and bioinformatics pathways used.

The use of different marker genes could give different results in terms of taxonomic composition. Different gene regions vary in both taxonomic coverage and species-resolving power, leading to the introduction of errors in the identification and estimates

TABLE 1 | List of monitoring tools and MSFD Descriptors covered in this review.

Monitoring approaches	Descriptors
Metabarcoding	D1, D2, D3, D4, D5
Microarrays	D1, D2, D3, D4, D5
qPCR	D1, D2, D4, D5
Chemical sensors	D8, D10
ROVs and AUVs (e.g., Clean Sea System)	D1, D2, D3, D4, D6, D10
Acoustic monitoring	D1, D3, D6, D7, D11
Flow cytometry, HPLC, Chemtax	D1, D5
Remote sensing of ocean color (i.e., satellite data)	D1, D5
Multibeam survey	D1, D6, D7
ARMS and ASUs	D1, D2, D3, D4
High resolution sampling instruments (e.g., CALPS)	D1, D2

D1, Descriptor 1. Biodiversity is maintained; D2, Descriptor 2. Non-indigenous species do not adversely alter the ecosystem; D3, Descriptor 3. The population of commercial fish species is healthy; D4, Descriptor 4. Elements of food webs ensure long-term abundance and reproduction; D5, Descriptor 5. Eutrophication is minimized; D6, Descriptor 6. The sea floor integrity ensures functioning of the ecosystem; D7, Descriptor 7. Permanent alteration of hydrographical conditions does not adversely affect the ecosystem; D8, Descriptor 8. Concentrations of contaminants give no effects; D9, Descriptor 9. Contaminants in seafood are below safe levels; D10, Descriptor 10. Marine litter does not cause harm; D11, Descriptor 11. Introduction of energy (including underwater noise) does not adversely affect the ecosystem.

of taxon relative abundance (Bik et al., 2013). The mitochondrial gene encoding for the cytochrome oxidase c subunit 1 (COI), is one of the preferred candidate loci for standard DNA barcoding projects (e.g., the International Barcode of Life, <http://ibol.org>). However, alternative genomic regions (e.g., nuclear 16S/18S rRNA genes, 12S mtDNA) characterized by more conserved priming sites have been identified as more appropriate for “metabarcoding” studies allowing to broader scale amplification of biodiversity across the eukaryotic taxa (Deagle et al., 2014). Nevertheless, for some taxa, these markers provide little resolving power at the species level. A possible alternative is represented by D2–D3 “diversity loop” region of 28S rRNA. A possible way forward to address this issue is represented by the multi-barcode approach (i.e., using a cocktail of gene markers for the same sample), which could help to improve taxonomic coverage and resolution.

Setting the best PCR conditions to recover the organisms present in an environmental sample is crucial for a successful application of metabarcoding to routine marine monitoring. A recent study demonstrated that different PCR conditions could affect the final taxonomic assignment in metabarcoding studies. A constant low annealing temperature (46 or 50°C) provides more accurate taxonomic inferences compared to the touch down profile (Aylagas et al., 2016). Conversely, increasing the number of PCR cycles leads to the increase in the number of spurious sequences and chimeras formed (Haas et al., 2011). Chimeras can inflate the overall biodiversity estimates and be eliminated by comparing the length of matched bases from the top hit in a MEGABLAST search to the length of the query sequence. As long as the database sequence is longer than the query sequence and a portion of the 3' end does not match, it is likely that the query is a recombinant. Chimeras can be removed

also by using other algorithms, including Perseus (Quince et al., 2011), UCHIME (Edgar et al., 2011) and USEARCH (Edgar, 2010).

The choice of the sequencing platform is strictly linked to the aim of the research (Carugati et al., 2015). Recently Illumina platforms have become more appealing than the Roche 454 to assess metazoan biodiversity, because of their increasing read lengths, lower per base cost, production of tens to thousands times more sequences, and lower error rates (0.1% vs. 1%, Glenn, 2011).

Metabarcoding is not exempt from errors: i) during the processing of the samples (e.g., DNA amplification steps producing “chimeras,” see above; Cline et al., 1996; Smyth et al., 2010), (ii) during sequencing (Glenn, 2011), and/or (iii) presence of multi-copy genes within a single species (e.g., Telford and Holland, 1997; Alverson and Kolnick, 2005; Bik et al., 2012). Metabarcoding based on PCR cannot yet provide reliable biodiversity indices since, especially for eukaryotes, it does not supply information on the abundance of every single species detected (Lindeque et al., 2013; Hirai et al., 2015). Most of the studies aimed at evaluating the relationships between species abundance and metabarcoding data obtained looser associations (Carew et al., 2013; Zhou et al., 2013; Hirai et al., 2015). Conversely, stronger relationships have been reported between biomass and read proportions (Elbrecht and Leese, 2015). Measure of relative abundance within metabarcoding samples need to be carefully considered. Nevertheless, in the absence of primer bias, a species characterized by larger biomass should be reflected by a greater proportion of sequence reads. Conversely, if the species is smaller or rarer, then fewer reads are likely to be obtained (Creer et al., 2016).

We are at the very beginning of applying this approach to analyse marine eukaryotic biodiversity. Further studies associated with the recent progress made in DNA sequencing technologies will allow elimination of DNA amplification steps and could open new perspectives to use metabarcoding in marine monitoring programmes. A recently developed approach, which could avoid PCR biases is based on the Illumina-sequencing of environmental metagenomes (mi_{tags}) (Logares et al., 2014b). We suggest that this method could represent, in the future, a powerful alternative to 18S rDNA amplicon sequencing and a useful tool to obtain simultaneously information on taxonomic and functional diversity.

An additional limitation of metabarcoding is that it does not differentiate between life stages, and thus juvenile stages and adults are pooled together. Further, species lists produced through metabarcoding currently are presence-absence based, and lack relative abundance data. Thus, traditional community analyses used for impact detection cannot be applied in the traditional manner, and instead the focus will be on overall species richness and presence of indicator species.

Another issue is represented by the still limited availability of sequences in public databases (Carugati et al., 2015). In some cases, operational taxonomic units (OTUs) can not be taxonomically assigned to a species, or even to a genus, due to the paucity of data in reference databases and the lack of taxonomic resolution at the species level of the marker gene (Dell'Anno

TABLE 2 | List of monitoring tools and ecosystem (abiotic and biotic) components to be used for.

Monitoring approaches	Main target components
Metabarcoding	Benthic assemblages (Micro-, meio-, macrofauna); Plankton assemblages (prokaryotic pico-plankton, eukaryotic pico-, nano-, micro-, meso- macro-, megaplankton)
Microarrays	Phytoplankton (i.e., harmful algal blooms)
qPCR	Water and sediment pathogens (e.g., <i>Escherichia coli</i> , fecal Enterococci, <i>Salmonella</i>)
Chemical sensors	Heavy metals, organic pollutants, algal toxins
ROVs and AUVs (e.g., Clean Sea System)	Physical and chemical parameters, trace pollutants. Benthic assemblages (macrofauna and megafauna), ichthyofauna.
Acoustic monitoring	Zooplankton and fish standing stocks
Flow cytometry, HPLC, Chemtax	Phytoplankton, picoplankton, virioplankton
Satellite data	Phytoplankton assemblage structure and biomass (Chl a), Suspended Particulate Matter (SPM), Dissolved Organic Matter (CDOM).
Multibeam survey	Seafloor, Hydrographical Conditions
ARMS and ASUs	Meio-, macro-, megafauna, microalgae, macrophytes
High resolution sampling instruments (e.g., CALPS)	Environmental parameters, zooplankton

et al., 2015; Leray and Knowlton, 2016). Thus, exploiting the data will require the continued refinement of database resources and bioinformatic pipelines (Minster and Connolly, 2006; Hajibabaei et al., 2011; Bik et al., 2012; Radom et al., 2012).

Consequently, the collaboration between molecular ecologists and taxonomists is required for the accurate characterization of species and for the deposition of quality assured barcode sequences in public databases (Jenner, 2004). The improvement of reference databases and thus the ability to assign OTUs to known species will enable metabarcoding techniques to be more reliably used in monitoring surveys, with high potential for the detection of non-indigenous species. It is also important to underline that relating sequences to taxonomically described species is not a necessity for many applications since in monitoring the focus is in pattern changes, not on taxonomic composition *per se*. We suggest that, in order to apply metabarcoding for the purposes of the MSFD (e.g., Descriptor 1), an attempt could be made using the overall species richness. For instance, significant changes in the species richness of the community can be a useful warning indicator and assessing such changes does not require that each molecular OTU is assigned to a precise taxon. The Biodiversity Descriptor of the MSFD does not explicitly require that species are all taxonomically identified. Furthermore, molecular barcodes of a species, even when the species is not in the reference database, generally allow identification at the genus or family level if other species of the same genus or family are present in the reference database.

Case study 1. Microbes

HTS approaches have been recently applied to study the biodiversity of marine viruses (Tangherlini et al., 2012), bacterioplankton (Bacteria and Archaea) (e.g., Sogin et al., 2006; Gilbert et al., 2009; Brazelton et al., 2010), eukaryotic pico- (0.2–3 μm) (e.g., Shi et al., 2009; Massana et al., 2015), nano- (3–20 μm) (e.g., de Vargas et al., 2015; Massana et al., 2015), and microplankton (20–200 μm) (e.g., de Vargas et al., 2015). Data on their abundance and diversity may provide

useful information on the impact of human pressures. Protists have been recurrently proposed as bioindicators (Payne, 2013). Nevertheless, the bacterioplankton component is still neglected by the MSFD (Caruso et al., 2015). The use of HTS allows the analysis of microbial biodiversity at an unprecedented scale, greatly expanding our knowledge on the microbiomes of marine ecosystems (Caporaso et al., 2011). These approaches provide relatively fast and cost efficient observations of the microbial component, and thus, may be suitable tools in biodiversity monitoring programs (Bourlat et al., 2013). Application of recently developed sequencing methodologies (e.g., Illumina technologies) to the analysis of the 16S rRNA gene for bacteria and of the 18S rRNA gene for eukaryotes in samples taken along the Barcelona coast (NW Mediterranean Sea) suggests that certain taxa (i.e., members of the Gammaproteobacteria) as well as the ratio between some phylogenetic groups may be good indicators of ecosystem health status. However, the robustness of these indicators needs to be explored by gathering data on plankton diversity in coastal areas subjected to different degrees of anthropogenic pressure over various temporal and spatial scales. Seasonality seems to play a major role in shaping bacterioplankton biodiversity and community structure (Gilbert et al., 2012; Cram et al., 2015) which could overwhelm the effects of human-induced pressures. Thus, despite being extremely promising, the suitability of incorporating prokaryotic/eukaryotic biodiversity into MSFD descriptors needs to be further explored in order to discriminate between changes resulting from human activities and the natural variability of the marine environment (Ferrera et al., 2016).

Case Study 2. Meiofauna

Small metazoans belonging to the meiofauna are sensitive to environmental changes and are increasingly used in monitoring studies for the assessment of environmental quality (Moreno et al., 2011; Pusceddu et al., 2011). However, meiofaunal diversity is so large that the analysis of a single phylum, such as Nematoda, requires huge investments of time from highly specialized

571 taxonomists. Metabarcoding could facilitate the census of
 572 biodiversity, especially for meiofauna, for which morphological
 573 identification is difficult. The typical metabarcoding workflow
 574 used to study meiofaunal biodiversity in marine benthic
 575

ecosystems is reported in **Figure 1**. Recent investigations of
 628 shallow and deep-sea nematodes based on 454 sequencing
 629 and classical morphological identification revealed that, at
 630 the order-family level, metabarcoding assignments matched
 631

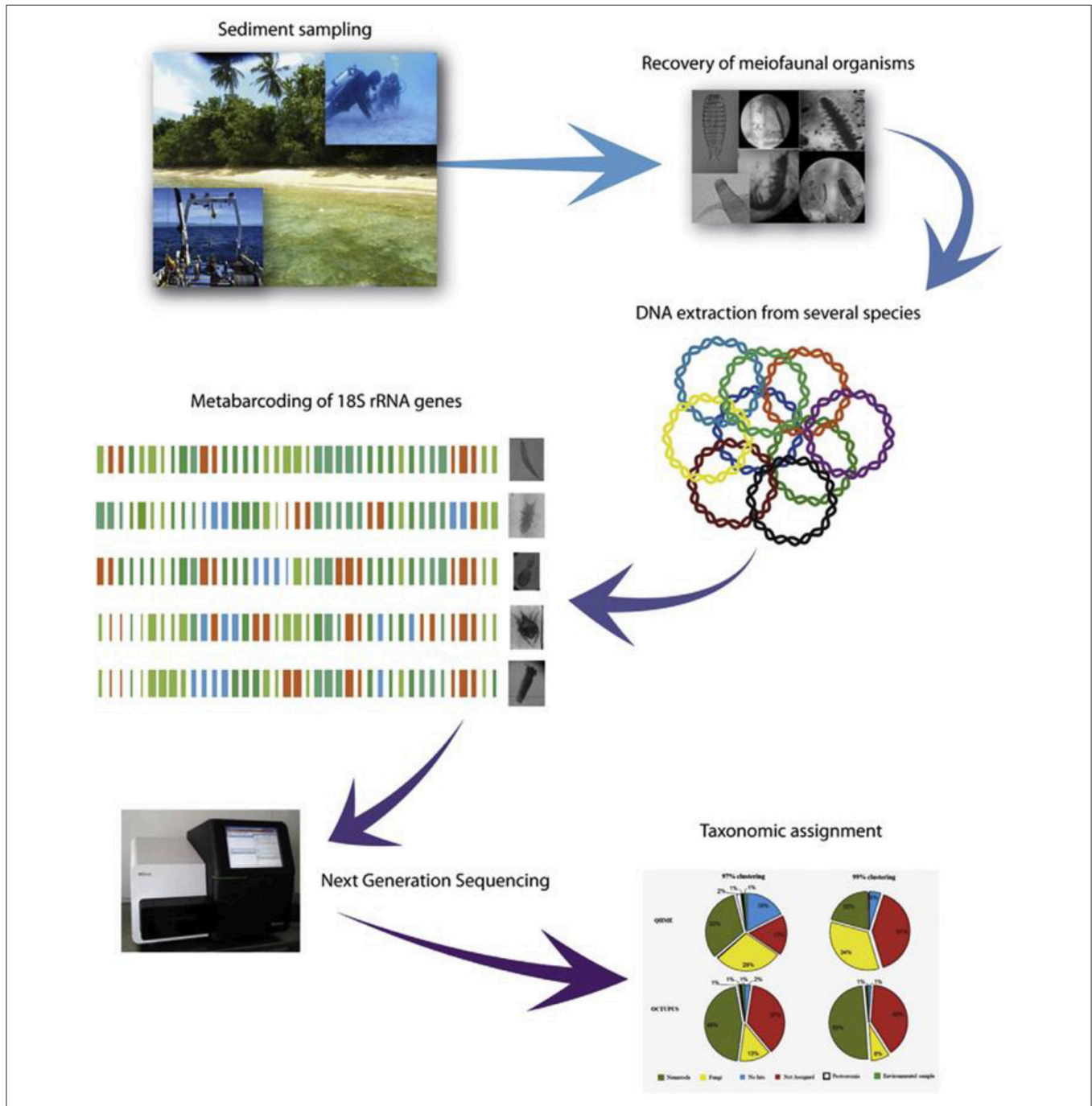


FIGURE 1 | Standardized workflow to study meiofaunal biodiversity in marine benthic ecosystems using high-throughput sequencing. Sediment samples (from shallow to deep-sea environments) are collected and subsequently frozen (-20°C or -80°C). In the laboratory, meiofaunal organisms are recovered from the sediments and their DNA extracted and purified. Following the PCR amplification of marker genes (e.g., 18S rRNA), high-throughput sequencing can be conducted on Roche 454 or Illumina platforms. Raw reads are processed and then clustered into operational taxonomic units (OTUs) under a range of pairwise identity cutoffs. After the BLAST-match of the obtained OTUs against public nucleotide databases, analysis of α - and β -diversity and phylogeography are performed. Image of Illumina MiSeq platform: Source: Wikipedia, Author: Konrad Förstner (Carugati et al., 2015).

685 the results obtained by morphological techniques, but some
686 OTU's remained unassigned (Dell'Anno et al., 2015). Although
687 metabarcoding is a useful tool to explore the diversity of marine
688 meiofaunal organisms, it still presents some gaps. Indeed, not
689 all species in a sample are detected and a certain percentage
690 remains unidentified due to the limited coverage of public
691 sequence repositories for meiofaunal taxa (Carugati et al.,
692 2015). This applies particularly to the deep sea, where most
693 of the taxa are still unknown (Appeltans et al., 2012). Thus,
694 we suggest to continue combining morphological identification
695 performed through light microscopy with molecular analyses,
696 in order to feed or even create local database, at least for
697 marine protected area or high priority areas. To more accurately
698 delineate species in metabarcoding datasets major efforts should
699 be devoted to understanding the actual variability of the 18S
700 rRNA gene amongst individuals of the same species and
701 amongst different species taking into account the contribution
702 of potential biases due to PCR and sequencing steps in
703 such variability. There is also the urgent need to identify
704 alternative single copy markers, nuclear or mitochondrial, less
705 subjected to such intra-specific variability. Finally, alternative
706 solutions can be the use of non-PCR-based metabarcoding
707 approaches, using capture probes, which are much less
708 sensitive to mismatches between probe/primer and target
709 and may replace PCR-metabarcoding. Future investigations
710 are needed to address these issues in order to facilitate
711 the inclusion of meiofaunal diversity in marine monitoring
712 programs.

714 Case Study 3. Macrofauna

715 Marine benthic macroinvertebrates are commonly used as
716 indicators of ecosystem health; yet, calculation of biotic indices
717 based on macro-invertebrate taxonomic composition (e.g.,
718 AMBI) requires each sample to be sorted and each specimen
719 to be taxonomically identified by an expert taxonomist. This
720 is a tedious, expensive and time-consuming process, which
721 has limitations, particularly when cryptic species, damaged
722 specimens or immature life stages are present (Ranasinghe et al.,
723 2012). Metabarcoding is a promising alternative to overcome
724 the limitations of traditional taxonomy and can help in ensuring
725 the accomplishment of temporarily and spatially comprehensive
726 monitoring. However, before routine implementation of this
727 approach, the development of standardized practices at each step
728 of the procedure (Aylagas and Rodríguez-Ezpeleta, 2016) and
729 the increase of the reference libraries for taxonomic assignment
730 are required (Aylagas et al., 2014). Additionally, in order to
731 ensure accurate biotic indices derived from metabarcoding,
732 the ability to detect the majority of organisms representing
733 the full gradient of tolerance to pollution is necessary. With
734 the aim of benchmarking metabarcoding against traditional
735 taxonomy in the context of biotic index calculation, Aylagas et al.
736 (2016) performed a thorough experiment comparing taxonomic
737 inferences and biotic indices derived from samples of known
738 species composition analyzed using alternative metabarcoding
739 protocols. The work resulted in a series of guidelines for
740 the application of metabarcoding for macroinvertebrate
741 monitoring.

742 The Application of Microarrays for the 743 Detection of Harmful Algal Blooms

744 Microarrays have been applied for *in situ* detection of harmful
745 algal bloom (HAB) species (Descriptors D1, D2, D5 in the
746 MSFD; see **Table 1** for more details). This method is especially
747 useful for the rapid identification of toxic algae (**Table 2**)
748 that can have serious consequences on human health (Bricker
749 et al., 2007). The European project MIDTAL (Microarrays
750 for the detection of toxic algae) has developed a microarray
751 to target major HAB species including toxic dinoflagellates,
752 raphidophytes, prymnesiophytes, Dichtyocophyceae and the
753 diatom *Pseudonitzschia* (Lewis et al., 2012). Microarrays are made
754 of coated solid surfaces onto which a large number of selected
755 DNA probes (specific for a taxon) can be spotted. Each probe
756 is fluorescently labeled and when the probe hybridizes with a
757 sample, the sample/probe complex fluoresces in UV light. An
758 advantage of this approach is that no PCR step is required
759 when total RNA is selected and this reduces the bias of any
760 unknown inhibitors in the sample. Because microarrays rely on
761 DNA probes for detection of HAB species, the potential for
762 new indicators could be nearly unlimited. This chip has been
763 tested on selected seawater samples previously morphologically
764 identified. Microarrays have shown high sensitivity and several
765 species not identified under light microscope have been
766 recognized by the probes on board the microarray. Thus,
767 microarray could be a potentially useful tool to provide quick
768 evaluation on the presence of toxic algae. However, the use of
769 microarray presents a series of limits. Some of the algal species
770 morphologically identified in a sample could not be detected by
771 the molecular probes. Moreover, the sensitivity of selected probes
772 was confirmed at genus level, but at species level the results were
773 less satisfactory. The costs of the MIDTAL microarray chip plus
774 reagents and consumables is still high. Thus, further attempts are
775 needed to make convenient and accurate the results provided by
776 the use of the microarray approach and we recommend the use
777 of the microarray in monitoring programs only if combined with
778 microscopy analyses. The combined approach between current
779 monitoring practices and microarrays could be applied in the
780 MSFD (e.g., Descriptor 5) in order to provide quick and reliable
781 information on the presence of algae potentially toxic for human
782 health.

784 Quantification of Pathogens by Means of 785 Real Time Quantitative PCR (qPCR)

786 Real-time polymerase chain reaction (qPCR) consists of the
787 amplification and quantification of a gene sequence specific
788 to the organism(s) of interest. The correlation of the amount
789 of DNA obtained with the number of individuals allows
790 the quantification of the investigated organisms in a given
791 sample. This procedure could be applied only to unicellular
792 organisms that contain a known number of copies of the
793 gene under study. Exponential amplification of the target
794 sequence is followed in real-time by means of a fluorescent
795 dye or a fluorescently labeled DNA probe. Quantification is
796 performed by comparison to a standard curve, which is run
797 concurrently with samples using reference material consisting of
798

799 pre-enumerated cells or DNA. qPCR has been recently tested to
 800 evaluate the quality of the freshwater and marine environment
 801 (Descriptors D1, D2, D5 in the MSFD, **Table 1**; Newton et al.,
 802 2011; Harwood et al., 2014; Lu et al., 2015). Traditionally, the
 803 classical microbiological analyses include the investigation, by
 804 using cultivation techniques, of the abundance of fecal indicator
 805 bacteria such as *Escherichia coli* and Enterococci in water
 806 samples, and *E. coli*, Enterococci and *Salmonella* in sediment
 807 samples (**Table 2**). The determination of total prokaryotic
 808 abundances could be also performed through epifluorescence
 809 microscopy. Such a technique allows the determination of the
 810 whole quantitative relevance of marine microbes contrary to the
 811 cultural techniques, which can only detect less than 1% of the
 812 actual abundance of prokaryotes (Staley and Konopka, 1985).
 813 Epifluorescence microscopy could be utilized in combination
 814 with qPCR of the prokaryotic 16S rRNA genes. The combined
 815 use of qPCR and metabarcoding could open new perspectives
 816 to investigate the biodiversity of the microbial community in
 817 seawater and sediment samples and in particular the relevance
 818 of human pathogens, going beyond the limits of the traditional
 819 approaches.

820 821 822 **IN SITU INSTRUMENTS TO MONITOR** 823 **MARINE ABIOTIC AND BIOTIC VARIABLES** 824

825 Some of the best approaches to meet current demands in
 826 marine monitoring are represented by novel *in situ* technologies,
 827 which provide high-frequency (continuous or semi-continuous)
 828 observations. So far, most of *in situ* instruments have been
 829 developed to monitor marine hydrological and physico-chemical
 830 variables, whereas the monitoring of the biotic variables is
 831 still mostly dependent on non-remote or automatic devices.
 832 An example is the system of SmartBuoys, which house a
 833 range of instruments for measuring salinity, temperature,
 834 turbidity, chlorophyll fluorescence, oxygen saturation and
 835 nitrate concentration. Such instruments enable the creation
 836 of wide-scale international networks of environmental data
 837 acquisition and sharing, as implemented in the framework of
 838 the ongoing S&T Med European project (<http://stmedproject.eu/>).
 839 Nonetheless, technological limitations are at the base of the
 840 presently scarce modeling capacity regarding population/stock
 841 and biodiversity assessments as well as ecosystem functioning.

842 843 **Chemical Sensors** 844

845 There are few sensors currently in use for monitoring
 846 concentrations of heavy metals, organic pollutants and algal
 847 toxins. An *in situ* analyzer has been developed to measure
 848 nitrate plus nitrite and total sulfide in deep-sea areas close
 849 to hydrothermal vents (Le Bris et al., 2000). More recently,
 850 Vuillemin et al. (2009) developed an *in situ* analyzer (the
 851 CHEMINI system) which measures analytes at even greater
 852 depths. However, as for any instrument deployed at sea, especially
 853 in nutrient rich environments, it is subjected by a rapid biological
 854 colonization (biofouling), which can limit overall deployment
 855 times (Mills and Fones, 2012).

856 **Seabed Observatories**

857 Marine observatories allow the collection of long-term time series
 858 of environmental parameters, but have yet not been commonly
 859 used. It is widely recognized that underwater technology could
 860 open new and interesting opportunities to ensure continuous,
 861 long-term, execution of monitoring. In particular, during the last
 862 decades, underwater video technologies have gained considerable
 863 importance in all fields of marine science. They represent a
 864 powerful, non-destructive and useful tool to study the dynamics
 865 and the interactions between benthic organisms, especially
 866 on hard-bottom sediments where traditional grab methods
 867 are ineffective. The use of underwater visual surveillance is
 868 becoming increasingly accessible for monitoring activities since
 869 it is versatile, serving as an “underwater eye” for researchers.
 870 Video cameras can be mounted on various vehicles ranging from
 871 simple towed platforms, Remotely Operated Towed Vehicles
 872 (ROTVs), to more advanced systems such as Remotely Operated
 873 Vehicles (ROVs) or Autonomous Underwater Vehicles (AUVs).
 874 Stills photos can be acquired using drop cameras, mounted on
 875 ROVs or by diver at shallow depths, and long-term data series
 876 can be used to study the links between biodiversity and climatic
 877 variations, for example correlating changes in biodiversity
 878 related to the North Atlantic Oscillation (NAO) index (Beuchel
 879 et al., 2006). In coastal benthic and pelagic systems at shallow
 880 depth, SmartBuoys equipped with underwater cameras can
 881 enable such time-series studies, contextually monitoring multiple
 882 environmental parameters to complement visual information. In
 883 general, video surveys produce indicators of overall sediment
 884 conditions and frequency of occurrence of the most visible taxa.
 885 Indicators from stills images focus on small-scale observations
 886 and automated image recognition techniques can be employed
 887 to quantify both presence and abundance of organisms but also
 888 extent of coverage or various proxies for biomass (Beuchel et al.,
 889 2006).

890 The increasing use of ROVs, AUVs and non-permanent
 891 camera stations have provided new insights on the biodiversity
 892 and ecosystem functioning of continental margin and deep-sea
 893 ecosystems (Solan et al., 2003; Stoner et al., 2008). However,
 894 challenges emerge in that inherently qualitative information
 895 needs to be converted into quantitative data from which
 896 indicators can be developed. ROV technology is available
 897 at all offshore petroleum installations, and biological visual
 898 seabed surveys frequently are carried out in potentially sensitive
 899 habitats both before and after the drilling event. Using a set of
 900 customized visual indicators, the extent of seabed smothering
 901 can be quantified and appropriate mitigation measurements
 902 planned based on the information collected during these surveys.
 903 Autonomous and cabled observatories are receiving increasing
 904 attention in marine science and have been demonstrated as
 905 capable platforms for collecting data remotely, and increasing
 906 insight into the functioning of remote marine ecosystems
 907 (Taylor, 2009; Best et al., 2013). Such cabled systems are
 908 expected to become an important tool in marine monitoring and
 909 management (Aguzzi et al., 2012a).

910 A possible limit of the use of video-imaging systems is that the
 911 lights necessary to acquire the images may influence the behavior
 912 of the organisms being observed. Operational lifetimes of

remotely deployed instruments are often limited by the available power supplies. Cabled observatories can provide the power to operate for long-term periods. However, the establishment of the infrastructure is still expensive and therefore limited in scope. Many *in situ* instruments still rely on commercially available batteries, which could limit their autonomy. Small wireless autonomous devices, such as remote marine sensors can be less energy consuming thus allowing longer deployments (Mills and Fones, 2012). Another challenge is represented by the large amount of data generated, which need to be stored and processed. Cabled multiparametric seafloor observatories are usually connected to the shore to transmit data in real-time. Data could be delivered via cable, automatically streamed to an internet socket, uploaded onto the website and automatically processed (Aguzzi et al., 2012b).

Underwater Autonomous and Integrated Monitoring

An interesting, recently developed technology is the CLEAN SEA (Continuous Long-term Environmental and Asset Integrity monitoring at SEA; **Figure 2**), which uses a commercially available AUV, upgraded with technologies enabling off shore monitoring of seafloor integrity and pollution (**Table 1**). This vehicle is characterized by a set of sensors able to measure both physical and chemical parameters and carry out *in situ* analysis of trace pollutants (**Table 2**). The CLEAN SEA system can also collect discrete water samples *in situ*. It is developed to perform acoustic surveys of the seabed and pipelines/flowlines as well as to detect hydrocarbon leakage. The CLEAN SEA system can also perform benthic community survey with detailed photographic/video coverage of the investigated area in order to determine the abundance and biodiversity of benthic assemblages and their temporal variations (**Table 2**). CLEAN SEA is characterized by wireless underwater communication for mission data downloading and wireless power recharge for increased autonomy. This may enable a “permanent” operation subsea independently of support from surface. CLEAN SEA seems to be a powerful technology for future environmental

monitoring around oil and gas infrastructures and to gain long-term data on abiotic and biotic variables.

Biosensors

High frequency non-invasive (HFNI) valvometers have been utilized as a potential tool for long-term marine monitoring and assessments (Andrade et al., 2016). The principle of the method is based on the regular gaping behavior (closing and opening of the valves) of bivalve molluscs and the fact that physical or chemical stressors disrupt that gaping reference pattern. Bivalve gaping behavior is monitored in the natural environment, remotely, continuously over a long-time period (e.g., years), requirements that must be fulfilled if bivalve behavior is to be a useful biomonitoring tool. We here suggest the potential application of the HFNI valvometry as a biosensor to monitor and provide early-warning alerts of changes in water quality, such as temperature increase, releases of contaminants and toxic algal blooms. Finally, HFNI valvometry could be used in the MSFD for routine monitoring of areas impacted by anthropogenic activities such as bathing beaches and harbors, oil platforms and aquaculture installations.

Acoustic Monitoring

An alternative method for studying marine organisms is a non-invasive acoustic approach. Active and passive hydroacoustics have explored a wide range of ecological subjects, such as pelagic communities, behavior, predator-prey interactions, and fish standing stock. The use of passive acoustic technologies (e.g., hydrophones) may solve problems of photic disturbance or limitation and provide useful results for the Descriptor 11 of the MSFD (**Table 1**). Most marine organisms produce sounds (marine mammals, fishes, invertebrates) to accomplish important ecological processes (e.g., communication, reproduction, foraging, predation, detection of predators and habitat selection; Van Opzeeland and Slabbekoorn, 2012). Understanding normal levels of variations in acoustic complexity is crucial for conservation efforts, enabling managers to decide whether changes in acoustic dynamics need further investigation. However, quantifying and characterizing the acoustic production of animals in marine soundscapes can sometimes be a challenging task to address. Active acoustic scattering techniques have potential to study the zooplankton and fish distributions, as they provide remote and non-intrusive samples at high resolution over large ranges (**Figure 3**), which is difficult to achieve using traditional net or other underwater systems alone. Multiple frequency scientific echosounders with split-beams and resulting echo-trace analysis (using frequency responses) can provide information on the sizes of animals, thus allowing some distinctions to be made. Despite the fact that the underwater acoustic instruments do not allow species classification (Knudsen and Larsson, 2009), they could be useful to gain information on pelagic and semi-demersal species as well as on zooplankton assemblages (Trenkel et al., 2011; **Table 2**). The Acoustic Complexity Index (ACI) (Pieretti et al., 2011) coupled with a software dedicated to soundscape analysis (Farina et al., 2011) can be used to elaborate collected acoustic files, in order to track the various biological signals, their daily and nightly dynamics

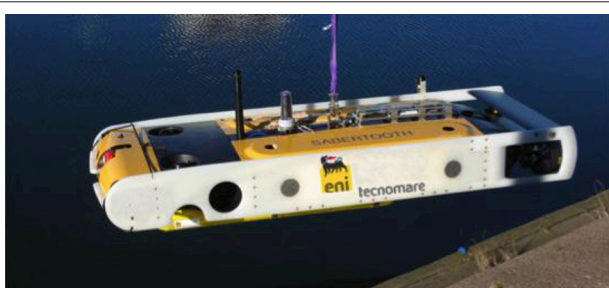
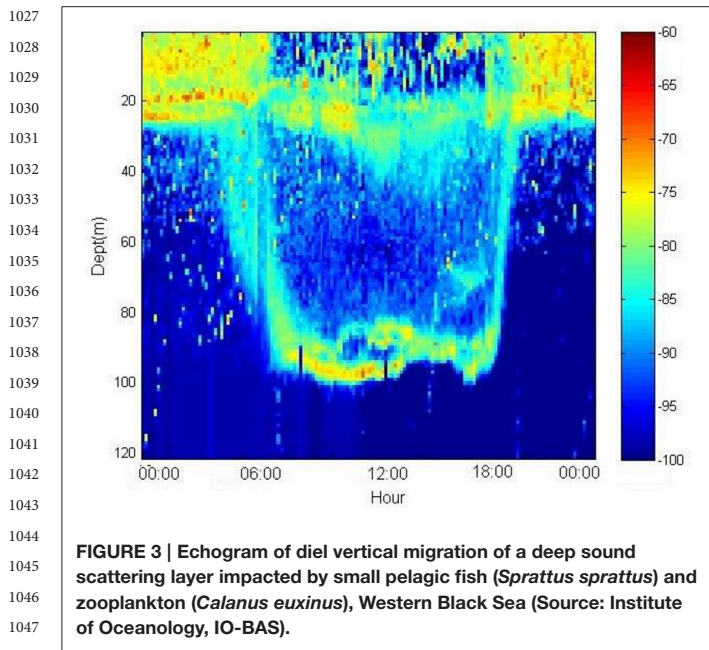


FIGURE 2 | The CLEAN SEA (Continuous Long-term Environmental and Asset Integrity monitoring at SEA). The Clean Sea system, launched by Eni E&P and its subsidiary Eni Norge, in cooperation with Tecnomare, is a commercially available AUV, properly upgraded with key enabling technologies, for the execution of environmental monitoring and asset integrity in offshore fields.



and distinguish them from noise pollution. Anthropogenic noise usually has specific frequency ranges (typically <1 kHz) which overlaps with the frequencies used by fishes for communication and other processes. We suggest that the ACI seems to be a promising tool to analyse marine soundscape filtering out noises and biological sounds.

NEW METHODOLOGIES FOR MARINE MONITORING

Comparison of Methods for Identifying Phytoplankton Diversity

Considering the objectives of the MSFD, it becomes important to evaluate emerging methods to enhance the efficacy and cost-efficiency of monitoring approaches, in particular non-intrusive, relatively low-cost methods based on optics. The optical metrics of phytoplankton include the size, shape, dimensions and complexity of the phytoplankton cell, as well as its light absorption, scattering and fluorescence characteristics, which are influenced by cell size, material and pigmentation. Each optical method shows some degree of selectivity or bias, either for a cell size range, pigment concentration range, or the ability to discern individual cell characteristics vs. a population of cells in a volume as a whole. Furthermore, it is recognized that the optical attributes of phytoplankton taxa are subject to natural variability regarding pigmentation, cell size, and colony formation within species.

Light microscopy is precise with regard to taxonomic determination, but less sensitive to rare species and practically limited to cells larger than 1–2 μm . Both fresh and stored samples can be analyzed, even if for some protists, fixatives deform the cells, making difficult their identification. The main limitation of this method is the time spent by an expert analysing a single sample, which is in the order of 1/day.

Flow cytometry analysis can be considered a combination of particle based and pigment analysis methods. The taxonomic distinction of each investigated particle is dependent on the number of lasers (usually 1 or 2 in benchtop instruments), detectors (4–8 in modern configurations) and is limited to those pigments that exhibit autofluorescence (chlorophylls and phycobilipigments). Besides fluorescence, flow-cytometers record forward- and side-scattering parameters, allowing basic size and shape characterization. Direct comparison of phytoplankton biodiversity obtained by using light microscopy, HPLC pigment and flow cytometry resulting from a multi-year sampling campaign in the productive season in the Baltic Sea revealed no meaningful correlation between the three methods (Figure 4). In this case, the lack of correspondence between the three methods can be explained by different lag times in the response of pigmentation, particle size distribution, or species composition to environmental changes. In other two studies a relatively good correspondence has been observed between the various methods (Casamayor et al., 2007; Christaki et al., 2011).

Pigment high-performance liquid chromatography (HPLC), has been for a long time a useful tool for obtaining information on taxonomic composition of phytoplankton, based on presence/absence of diagnostic pigments (Smith et al., 2010; Roy et al., 2011). Computational approaches, such as the statistical fitting tool CHEMTAX, have been used to determine phytoplankton biodiversity by estimating the relative contribution of different taxa to the total chlorophyll a (TChla) concentration in a sample (Mackey et al., 1996; Gibb et al., 2001; Goela et al., 2015). Although the software is fully developed, an *a priori* knowledge of the classes existent in the samples is required, as well as an appropriate choice of the ratios of pigment:Chla, considering the characteristics of the investigated geographical region (i.e., light availability; Higgins et al., 2011). As the inferences of this technique are based on the chemical composition of a sample and not on the direct observation of the phytoplankton cells, it has an improved capability to differentiate among organisms in smaller size classes, which in traditional methods such as microscopy fall into the category of unidentified flagellates (Goela et al., 2014). A recent application of this approach to oceanic regions, where populations of small organisms can be dominant, has proven to be particularly useful to distinguish the contribution of cryptophytes, prymnesiophytes, and prasinophytes to TChla concentration (Goela et al., 2014). Thus, the use of chemotaxonomic methods in combination with the classical methods (e.g., microscope enumeration, phytoplankton size-structure) would be useful to evaluate and characterize Descriptor 5 of the MSFD (Mangoni et al., 2013; Cristina et al., 2015; Goela et al., 2015; Table 1). Once the HPLC methodology is implemented and running, CHEMTAX offers a rapid and cost-effective way to assess the taxonomic composition of a sample, used as a first assessment of the phytoplankton assemblage. It might provide valuable insights on the potential presence of specific groups (e.g., harmful species), especially when there is previous knowledge of the classes that are likely to contain HAB species (Mangoni et al., 2011; Liu et al., 2014).

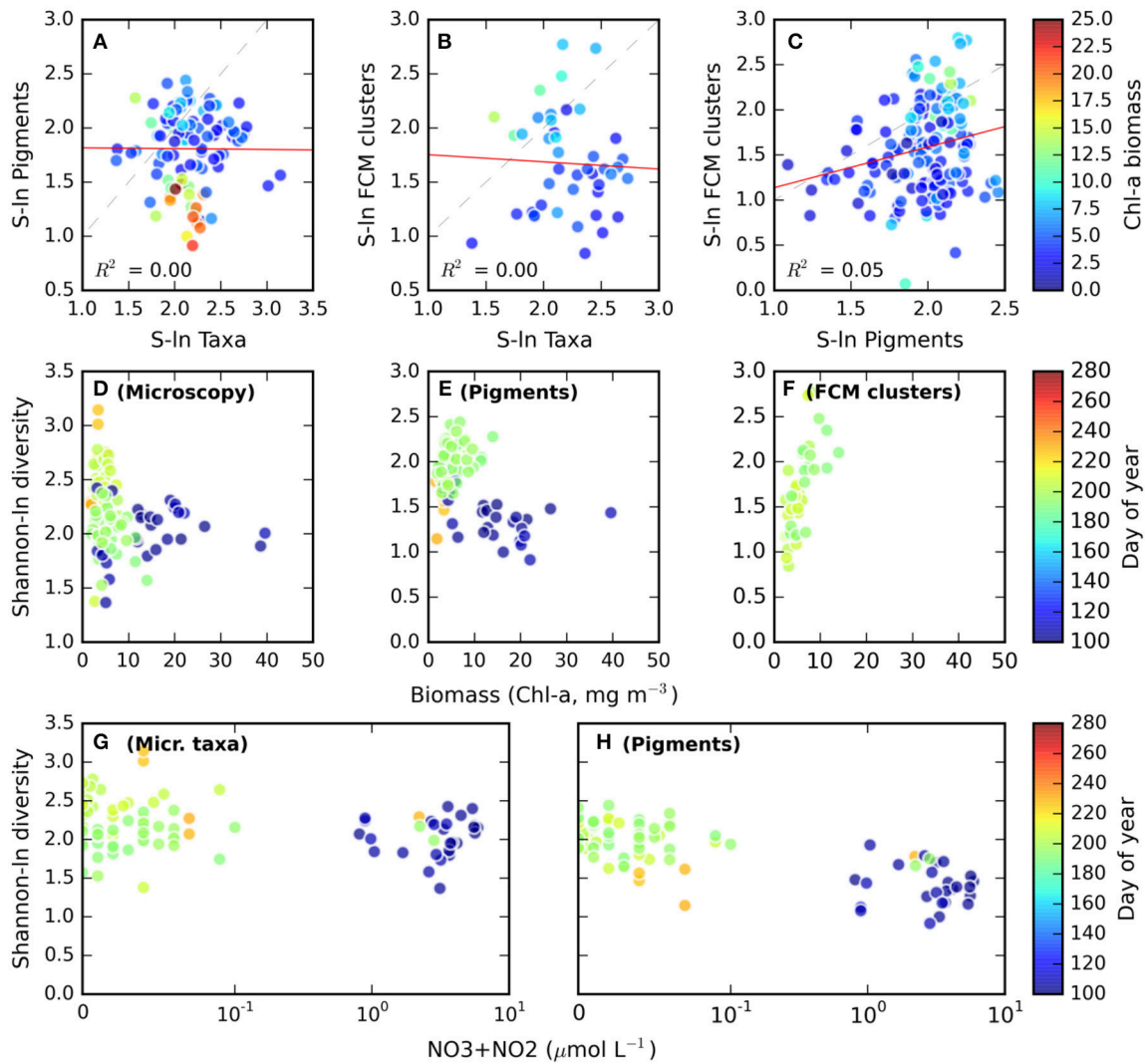


FIGURE 4 | (A–C) Scatter plots comparing the Shannon diversity metrics obtained with HPLC Pigments (Pigments), Flow Cytometry cluster analysis (FCM clusters), and light microscopy determined to the most detailed taxonomic level (Taxa) from samples collected in the productive season in the Baltic Sea. Linear least-squares regression lines are drawn in red, dashed lines indicate unity. The color scale applied to each data point indicates the chlorophyll-a biomass of the sample (units mg m^{-3}). **(D–F)** Shannon diversity derived from Microscopy, Pigments, or Flow cytometry cluster analysis, as a function of biomass and sampling time (color scale). **(G–H)** Shannon diversity derived from Microscopy and Pigments as a function of inorganic nitrogen concentration and sampling time (color scale) (Source: Plymouth Marine Laboratory, Finnish Environment Institute).

The major caveats applied to the use of the method are often observed in phytoplankton classes which contains no diagnostic pigments or in which the diagnostic pigment is not present in all the species of the class. That is the case, for example, of dinoflagellates. Often, the marker pigment used in CHEMTAX for dinoflagellates class is peridinin, which is only present in some of the auto- or mixotrophic species of dinoflagellates (Thronsen, 1997). This might lead to the underestimation in areas where most of the dinoflagellates are heterotrophic (e.g., Goela et al., 2014). In those cases, a more reliable CHEMTAX analysis would involve a careful examination of the typical pigment profiling of the local dinoflagellates community, namely the combinations

between different diagnostic pigments, or the search for species specific diagnostic pigments (e.g., Örnólfssdóttir et al., 2003; Smith et al., 2010; Roy et al., 2011). The versatility of the method, that is, the possibility to run the software with different combinations and values of pigment:Chla ratios is, in fact, one of the major advantages of the method, allowing easily to locally adapted pigment profile schemes. Recently, several studies have focused on the effective and successful use of CHEMTAX to detect HABs (e.g., Örnólfssdóttir et al., 2003), although pigment profiling studies, such as Liu et al. (2014), in other areas of the globe would be beneficial to the fulfillment of this objective.

Analysis of Planktonic Microbial Diversity by Flow Cytometry

In plankton microbial flow cytometry, small sample volumes are circulated in front of a laser with a fluidics system that forces each cell to pass in front of the laser, which is typically blue, red or UV. The instruments can observe thousands of cells per second, so a few minutes of operation enables inspection of several hundred thousand cells. Both the cells and the abiotic particles disperse the laser light and generate fluorescence after the excitation. Since scattered light is proportional to cell size (and cell internal rugosity) and fluorescence is proportional to pigment content, it is possible to differentiate various groups of phototrophic oxic (Marie et al., 2005) and anoxic (Casamayor et al., 2007) microorganisms according to their average cell size, types of pigments and pigment ratios. In addition, it is possible to stain the nucleic acids of heterotrophic prokaryotes (Gasol and del Giorgio, 2000), heterotrophic eukaryotes (Christaki et al., 2011) and viruses (Brussaard et al., 2000) and simple activity probes can be used to obtain indication of the relative physiological state of prokaryotes and phytoplankton (del Giorgio and Gasol, 2008). This method allows easy fingerprinting of the microbial assemblages and a fast indication of how they respond to disturbances.

Besides the cost of instrumentation, which is progressively decreasing in recent years, the total cost is on the order of a few euros per analysis and can be done and processed in less than an hour. Moreover, sample collecting, processing, flow cytometry and data analysis can be automated (Besmer et al., 2014) and even commercial (Dubelaar et al., 1999) and non-commercial (Olson and Sosik, 2007; Swalwell et al., 2011) instruments can be submerged and send the data via cabling or radio. This allows their inclusion in environmental monitoring systems such as SmartBuoys, whose multiple sensors provide complementary information of the environmental settings in which cytometry data are acquired.

There are at least four different ways in which flow cytometric data can be used to infer ecosystem properties or environmental status (Gasol and Morán, 2015): (i) Presence/absence of specific microbial assemblages (e.g., presence of red-fluorescing cyanobacteria is generally associated with turbid low-light environments, whereas high abundances of *Prochlorococcus* or dominance of pico-eukaryotes with nutrient-rich environments; Stomp et al., 2007); (ii) Estimates of cytometric diversity (Li, 1997) of either pico-phytoplankton and heterotrophic prokaryotes; (iii) Population size and pigment content (e.g., temperatures lead to total phytoplankton and bacterioplankton decreases in cell size; Morán et al., 2010, 2015); and (iv) Ratios between populations abundance (e.g., the ratio between picocyanobacteria and eukaryotic picophytoplankters has been used to indicate nutrient levels as cyanobacteria are more likely to be abundant in low nutrient oligotrophic environments while eukaryotes tend to dominate in high nutrient conditions; Calvo-Díaz et al., 2008).

While the potential for these methods to work exists and a cost-savings potential is clearly demonstrated, additional testing is needed to determine how robust the methods are to detect

physiological changes, such as those caused by nutrient and light availability. Sensitivity of these methods to cell physiological constrains may for example introduce undesirable seasonal or geographical bias which traditional (e.g., microscopy) methods would not show. Further studies are therefore needed to derive robust indicators of environmental status, preferably based on a multitude of complementary methods. Gathering data over various temporal and spatial scales in order to distinguish natural variability from that resulting from anthropogenic pressures will help validate these indicators, in order to subsequently develop highly automated tools for rapid assessment of marine environmental status.

REMOTE SENSING

Remote sensing of optical, thermal and radar images from airborne and satellite sensors offers many new opportunities for the direct monitoring of biodiversity, for observing patterns in the land and sea which relate directly to biodiversity, or for the provision of environmental data layers which are needed in order to build predictive models of species and habitat distributions (Turner et al., 2003; Pettorelli et al., 2014). A new impetus has been given to the field of satellite remote sensing by the European Union's Copernicus programme in which the first of a series of Earth-observing sensors on the Sentinel satellites have been successfully launched. Sentinel 1 is a radar satellite with cloud-penetrating ability, in orbit since April 2014, and now delivering images that relate to marine and maritime needs, such as sea-ice extent, oil-spill monitoring and ship detection for maritime security. Radar images are very useful for determining the extent and composition of intertidal and salt-marsh habitats (Van Der Wal and Herman, 2007). Sentinel-2 for high resolution optical images of the coastal zone, as with Sentinel-1, will greatly enhance our ability to detect changes in intertidal and shallow subtidal habitats (Van der Wal et al., 2008). The final recent launch was that of Sentinel-3 for wide-field ocean color viewing, altimetry and sea surface temperature on 16th February 2016. Sentinel-3 will continue the progress made by other ocean-viewing satellites such as SEAWIFS, MERIS and MODIS and ensure continuity of ocean color measurements (Le Traon et al., 2015). The use of remote sensing represents a cost-effective tool supplementing conventional *in situ* sampling. The *in situ* measurements are typically based on oceanographic cruises that provide discrete data sets with often spatial and temporal coverage, which could limit the analysis of the dynamics of the phytoplankton in relation to human activities (Rivas et al., 2006). Remote sensing can provide highly valuable data bridging the spatial and temporal gaps in observations complementing the *in situ* measurements. These are the major advantages of remote sensing as compared to *in situ* observation systems (Blondeau-Patissier et al., 2004). However, ocean color remote sensing also present some limitations as: (i) satellite-derived Chla concentrations estimates of phytoplankton biomass content are based on conversion factors (Rivas et al., 2006); (ii) information about the surface parameters can be obtained only during cloud free conditions, limiting spatial and temporal coverage, especially

in high latitudes and the tropics (Blondeau-Patissier et al., 2004; Peters et al., 2005); (iii) the confidence of the estimated values based on global algorithms has to be validated with *in situ* observations, which are essential to ensure the optimal quality of the data retrieved by satellite remote sensing, in particular in coastal and estuarine systems due to the optical complexity of such waters (Aurin and Dierssen, 2012).

Selected uses of satellite Earth observation in the field of marine biodiversity are presented in the sections below.

Satellite Data for the Implementation of MSFD with Respect to Eutrophication (D5)

The use of remote sensing allows a cost-effective and synoptic monitoring of extensive oceanic and coastal areas (IOCCG, 2009). The products acquired by ocean color remote sensing can be quantified by bio-optical algorithms that retrieve the concentration of Chlorophyll *a* (Chla), Suspended Particulate Matter (SPM) and the absorption of the Colored Dissolved Organic Matter (CDOM). These indicators of the status of the marine ecosystems give information about the phytoplankton biomass (Chla), the water transparency or turbidity (SPM) and about the terrestrial inputs of freshwater (CDOM) (Vantrepotte and Mélin, 2010; **Table 2**).

Several studies have been carried out in European waters for the validation of remote sensing satellite products in a wide range of geographical areas (Sørensen et al., 2007; Antoine et al., 2008; Kratzer et al., 2008; Petersen et al., 2008; Cristina et al., 2009, 2014; Zibordi et al., 2013). These studies demonstrate the accuracy and the precision of the technique to provide good quality data and to identify what are the main sources that influence the complexity of these waters.

The advantages of this tool are evident for countries that have limited resources to monitor one of the largest marine zones of regional seas (Cristina et al., 2015). An ocean color remote sensing product (Chla) can be used to detect and track the development of algal blooms in coastal and marine waters. Thus, this tool can support the implementation of the MSFD with respect to Descriptor 5: eutrophication, as demonstrated in Sagres, southwest Iberia (Cristina et al., 2015, **Table 1**). Furthermore, it allows distinguishing whether the eutrophication is natural, driven by upwelling, or due to land-based inputs. The implementation of a regional algorithm increases the accuracy of the remote sensing data produced to retrieve the Chla, particularly during upwelling events when the highest concentrations of Chla occur (Cristina et al., 2016). This is supported by studies in the Baltic Sea (Harvey et al., 2015), also showing the advantages of using satellite remote sensing for monitoring and eutrophication assessment and for the status classifications of water basins. These studies show that this tool can be applied for both national, European and Regional Seas monitoring plans as well as the implementation of the MSFD and the Water Framework Directive (Gohin et al., 2008; Novoa et al., 2012). In summary, the use of remote sensing can be an efficient tool providing a synoptic view of the products (e.g., phytoplankton biomass), showing their distribution over an extended period, identifying seasonal patterns and showing

the effect of changes in marine ecosystems promoted by human pressures and by environmental changes.

However, the eutrophication of the benthic compartment and its effects on the biota, which have been investigated repeatedly in the last decade (Danovaro et al., 2000, 2004; Danovaro and Gambi, 2002; Dell'Anno et al., 2002; Pusceddu et al., 2007, 2009) cannot be assessed through remote sensing.

Satellite Imaging of Harmful Algal Blooms

Harmful algal blooms (HABs) adversely affect the marine environments by releasing toxins, decreasing food availability for higher trophic levels, and reducing oxygen levels in water, potentially causing mass mortality of marine organisms (Silke et al., 2005). HAB species may dominate the phytoplankton community, with very high chlorophyll concentration that can be detected from satellite sensors (Miller et al., 2006). Hence satellite monitoring of HABs is a novel method to detect undesirable (reduced biodiversity) water quality events, which may sometimes be related to eutrophication as described above. The remote sensing of chlorophyll concentration product has been successfully used to identify algal bloom events in the marine and coastal waters (Babin et al., 2008). However, the algal bloom of potentially harmful species could not be identified from analysis of chlorophyll concentration (Babin et al., 2008).

The method developed at Plymouth Marine Laboratory (PML), UK, uses measurements of water reflectance and inherent properties (IOPS) for automatic detection of HABs in satellite optical images (Kurekin et al., 2014). It is based on the relationships between water absorption properties and algal pigment composition, and between water backscatter and phytoplankton cell size, as features for HAB discrimination. The features were classified by Linear Discriminant Analysis (LDA) technique to produce HAB risk maps, as shown in **Figure 5**.

The method has been trained to discriminate *Karenia mikimotoi* and *Pseudo-nitzschia* sp. in the UK coastal waters, as well as *Phaeocystis globosa* algal blooms in the Southern North Sea. Measurements on board the RV Cefas Endeavor, provided by CEFAS, were integrated in the assessment of HAB risk. Joint analysis of satellite ocean color and Ferrybox data has been successfully applied for detection of a *Karenia mikimotoi* bloom off the North East of Scotland in August-September in 2013 and in 2014. The experiment has confirmed a strong correlation between satellite observations of HAB risk (Kurekin et al., 2014) with measurements of CTD profiles (including fluorescence and oxygen profiles) and *in-situ* samples (algal pigments, chlorophyll-*a*, cell count by microscopy and flow cytometry).

This method allows daily estimation of certain HABs over a wide area, depending on cloud cover. However, it is limited to phytoplankton species that produce high biomass blooms with a characteristic surface water coloring, whereas many toxin-producing algae are harmful in low concentrations. HAB risk maps are already operational for early warning of blooms affecting Scottish salmon farms, so it would be practical to extend the method toward further monitoring programs. The method is dependent upon the quality training data available for each HAB type, and so this aspect requires ongoing development.

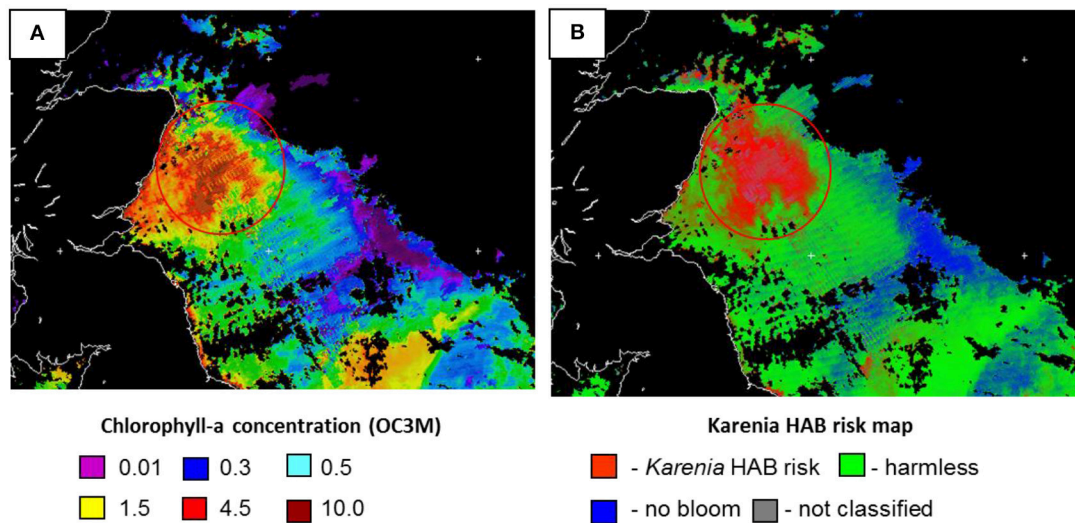


FIGURE 5 | *Karenia mikimotoi* harmful algal bloom off the North East of Scotland in Sept. 2013 detected by MODIS AQUA sensor. (A) Chlorophyll-a concentration map, OC3M algorithm; **(B)** *Karenia* HAB risk map. High-risk areas are given in red, harmless areas—in green and no bloom areas—in blue (Source: Plymouth Marine Laboratory).

Remote Sensing of Shelf-Sea Fronts for Estimating Pelagic Biodiversity

A novel approach to the mapping of pelagic diversity has been implemented for the UK continental shelf, using a long time-series of remotely-sensed SST data to automatically detect thermal ocean fronts and then aggregating observations into climatological seasonal metrics (Miller and Christodoulou, 2014). These metrics have characterized the spatial, seasonal and interannual variability of fronts observed in 30,000 satellite passes over a 10-year period. Many researchers have determined that fronts are related to the abundance and diversity of pelagic vertebrates such as seabirds and cetaceans (reviewed by Scales et al., 2014). The resulting front maps were successfully applied as a proxy of pelagic diversity to the UK Marine Conservation Zone (MCZ) project—a key element of efforts to improve environmental status of European seas, and this influenced the designation of 11 of the recommended MCZs (Miller and Christodoulou, 2014) (Figure 6).

Although seasonal locations of frequent fronts were found to be fairly consistent, there are considerable interannual and week-to-week variations in the location and frequency of fronts, with consequential changes in the water column likely to affect species distributions. Hence satellite monitoring of shelf-sea fronts can serve as a proxy for certain mobile pelagic animals and as a physical boundary that structures other components such as zooplankton. Real-time front maps can be compared and integrated with other tools such as Ferrybox to assess aspects of the ecosystem and its biodiversity. Real-time satellite front maps have been applied to a UK project to optimize the MCZ/MSFD monitoring strategy using sea gliders and autonomous underwater vehicles across frontal biodiversity gradients (Suberg et al., 2014).

Hence the key benefits of this technique for marine monitoring are to assist the optimization of sampling strategies

and to inform predictions of the abundance of fish and other pelagic animals that are difficult to measure directly.

Broad-scale Seabed Mapping Using Opportunistic, High-Resolution Seafloor Acoustic Data

One of the core requirements of the MSFD is the use of habitat maps at the regional or sub-regional scale (Annex III, Table 1). In addition, there is an expectation that the assessment takes account of environmental conditions when deciding assessment boundaries [Article 3(2)] and this involves an understanding of predominant habitat types, including the structure and substrata composition of the seabed. The importance of knowing the changes in seabed conditions in detail are particularly relevant for the directives Habitats (D1), Seabed Integrity (D6), and changes to Hydrographical Conditions (D7) (Tables 1, 2). So whilst assessments must be reported on at the regional level the actual scale of assessment is on subdivisions of the subregions (European Commission, 2014). Determining the relevant scale for assessment is especially important when we consider that these must be aggregated and reported at a higher level, so that errors and uncertainties will propagate up from the minimum assessment areas (Dong et al., 2015). So whilst identifying the most appropriate assessment method for indicators is a challenge in itself (Berg et al., 2015), the spatial component fundamentally affects our ability to accurately assess ecosystem components.

For the benthic environment we are severely restricted as to the amount of existing data we have to define ecologically relevant areas. The failure of market-value to adequately represent the societal importance of the marine environment has been widely recognized (Brouwer et al., 2016) and the practical reality is that there is less short-term economic incentive to collect seabed information (compared to terrestrial remote sensing), as a result little of the European seabed has been

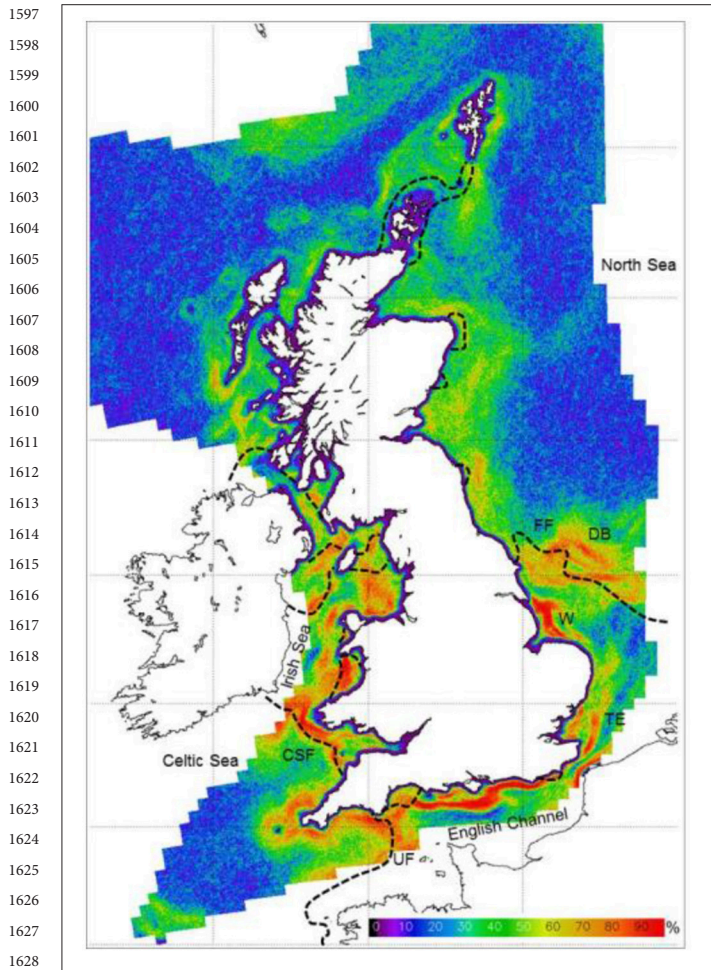


FIGURE 6 | Summer frequent front map based on a 10-year time-series of satellite SST data, compared with fronts predicted by a numerical model based on tidal currents and bathymetry (dashed lines where Simpson-Hunter stratification parameter $S = 1.5$). FF, Flamborough front; UF, Ushant front; CF, Celtic Sea front; DB, Dogger Bank; W, Wash; TE, Thames Estuary. (From Miller and Christodoulou, 2014, UKCS region, 1.2 km resolution, 1999–2008 data).

mapped using modern methods. A direct consequence of such data deficiency is that 76% of seabed habitats are in unknown status (EEA, 2015) and there are no systematic habitat mapping programmes in place at national or pan-European scales.

In the absence of adequate seabed data, the urgent need to define seabed habitats for management has resulted in the construction of modeled seabed data such as UKSeaMap (Connor et al., 2006). These existing broadscale maps will inevitably contain errors due to data deficiencies and generalizations. However, the alternative of using the scattering of existing high-resolution maps, does not address our needs to define biogeographical limits of species or overall habitat distribution at a regional scale. To overcome this difficulty (of high resolution data only existing as a localized patchwork) and make best use of existing resources, the novel strategy of continuously logging high-resolution multibeam data during existing monitoring cruises has been adopted on the RV Cefas

Endeavor using the Olex software programme. This allows non-hydrographers to automatically mosaic and navigate around the seafloor data in real time through a simple graphical interface. It is then possible to use the data operationally rather than waiting for it to be processed and made available in an accessible format. As there are no dedicated personnel required and the system has no adverse effect on existing operations, large amounts of high-resolution data are collected with negligible additional cost (continuous operation is not expected to reduce its serviceable life expectancy of sonar systems).

Integrating the high resolution bathymetry and backscatter data with existing broadscale environmental data (such as modeled currents and seabed morphology) using random-forest models (e.g., Hengl et al., 2015), it is then possible to create a complete coverage map of the seabed conditions (Figure 7). By using only acoustic data in our study the modeled variables produced (whilst not ground-truthed) are repeatable, provide outputs at a uniform resolution, and allow a consistent assessment of uncertainty to be made across the area (Mascaro et al., 2014). These properties are valuable when addressing questions of map interpretation (Steiniger and Weibel, 2005) and ecosystem status at regional scale (Walz and Syrbe, 2013; Galparsoro et al., 2015a). It is possible to use these data to produce categorical maps. However, there are concerns as to the validity of categorizing continuous environmental variables for habitat delimitation (Wilson et al., 1999; Orpin and Kostylev, 2006; Galparsoro et al., 2015b). Defining a fixed set of conditions which delimit the extent of a single species is conceptually problematic (Randin et al., 2006; Heads, 2015), and, as habitats are taxon and scale-specific (Mairota et al., 2015; Mathewson and Morrison, 2015), the use of existing, readily available, categorical GIS habitat maps for biotope assessments should not be considered as scientifically defensible.

Using the method outlined above to collect large quantities of high-resolution data over a broad extent, we can also directly map highly localized features and impacts, such as the direct mapping of species distribution and condition of biogenic reefs. In this way we have a direct relationship between sonar image and species distribution without the need to go through the process of inferring their distribution from correlations. Models can be used to identify areas where the feature is likely to be present and additional monitoring effort can be deployed as necessary, both to monitor condition, as well as to better define their extent (as required by the relevant indicators).

There is no practical hindrance to the collection of spatially-extensive, high-resolution data from a wide range of platforms already conducting regular monitoring activities. The challenge is in recognizing the benefits of such data in supporting the spatial assessment of multiple indicators, implementing the necessary routines and then incorporating the outputs into monitoring, assessment, and management strategies.

INNOVATIVE SAMPLING METHODS

Here we summarized the experience made on innovative sampling methods, some of which have been applied for the

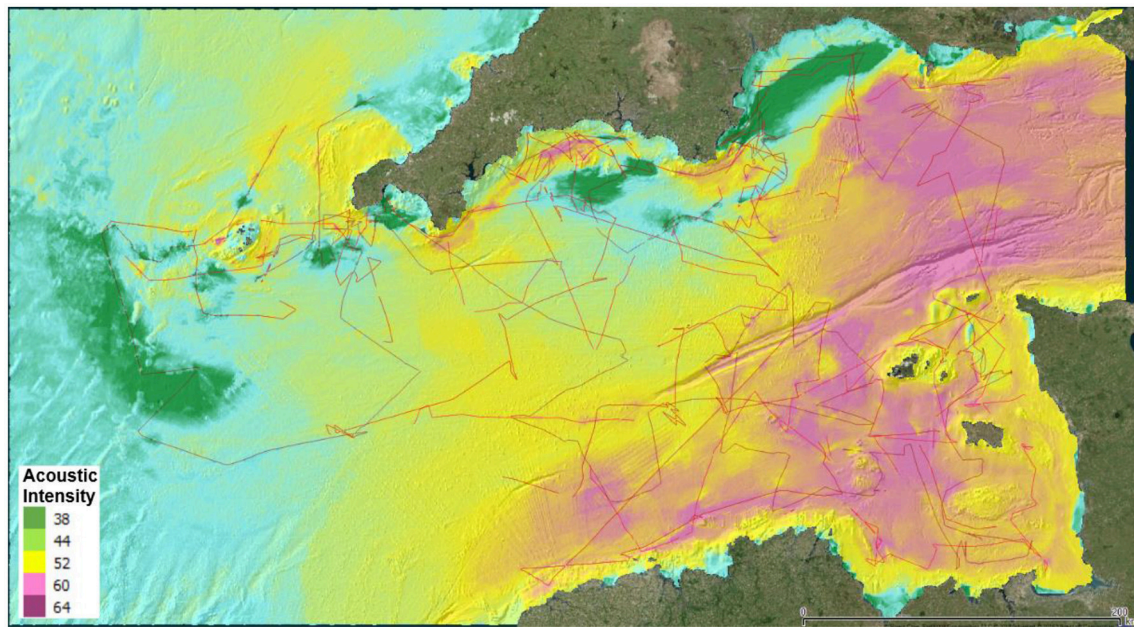


FIGURE 7 | Random forest model of seabed acoustic intensity, extrapolated from high-resolution multibeam data collected opportunistically during fisheries research cruises (ships tracks as red lines; Source: OceanDTM).

first time in European seas. These include methods to monitor hard-bottom substrata, but also the use of citizen science to obtain massive information.

Artificial Structures to Monitor Hard-Bottom Benthic Biodiversity ARMS

Small invertebrates, including sessile and encrusting organisms as well as mobile specimens inhabiting ecological niches in hidden spaces, represent most of the benthic biodiversity in rocky areas. Despite its importance for ecosystem functioning, a considerable percentage of benthic biodiversity is untargeted during traditional surveys and thus likely to be unreported (Pearman et al., 2016a). In the current scenario of global change, caused by natural and anthropogenic pressures, species may be pushed to extinction even before their identities and roles in ecosystem functioning can be understood (Costello and Wilson, 2011).

To overcome the difficulty in obtaining standardized and comparable information on benthic biodiversity from different habitats and regions, the Coral Reef Ecosystem Division (CRED) of the United States National Oceanic and Atmospheric Administration (NOAA) developed a standardized biodiversity assessment tool called an “Autonomous Reef Monitoring Structure” (ARMS; **Figure 8A**). This device consists of nine 23×23 cm gray, Type I PVC plates stacked in an alternating series of layers that are either open to the current or obstructed, which are intended to mimic the three-dimensional structure of the reef environment. They should be deployed for 1–3 years and colonized by bacteria, algae and sessile and mobile fauna, including cryptic species, of different size ranges (meiofauna,

20–500 μm ; macrofauna, >500 μm ; large macrofauna, >2000 μm). After recovery, both sides of each plate are photographed, and then surfaces are scraped, homogenized and analyzed using barcoding and metabarcoding techniques. The ARMS processing protocol applies a combination of morphology (for organisms >2000 μm) and molecular-based (all components) identification approaches to assess species richness (Leray and Knowlton, 2015).

The use of a standard sampling unit and the application of homogeneous protocols for morphological and molecular identifications can produce comparable datasets over different geographical areas. Despite some limitations of the metabarcoding technique (Carugati et al., 2015; see metabarcoding section), such as the incompleteness of reference databases, the sequence inventory obtained is already valuable for biodiversity assessment that be further improved in the future without additional laboratory work by rerunning the bioinformatics analyses on updated reference databases. Over a deployment of 1–3 years, colonization and succession patterns could be affected by changes in environmental conditions, making ARMS proper tools for marine monitoring of coastal areas. ARMS can be also re-deployed in the same locations and used to assess biodiversity changes over time. The characterization of the surrounding environment where ARMS units are deployed should be carried out for a comparison with natural assemblages. Temporal variability in key environmental variables, such as temperature, nutrients and chlorophyll a, should be investigated during the deployment period. Combining the use of ARMS with standard surveys, generally targeting fish and conspicuous invertebrates (**Table 2**), it is possible to obtain a comprehensive picture of the biodiversity

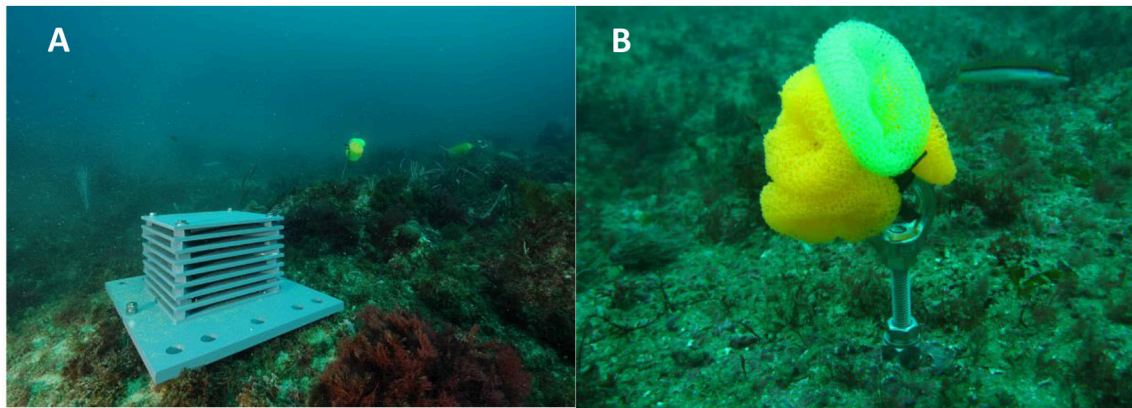


FIGURE 8 | Standardized sampling devices to monitor hard-bottom benthic biodiversity. (A) Autonomous Reef Monitoring Structure (ARMS), which recreate the 3D structure of a natural reef environment. **(B)** Artificial Substrate Unit (ASU) developed to mimic the filamentous algae or kelp holdfasts.

and more accurate information on the health status of the system.

The use of ARMS for routine marine monitoring presents some problems that need to be addressed. Although the costs of sequencing are dropping, and even if the ARMS-based approach is more cost effective than morphological-based one (Hayes et al., 2005), overall costs may still be high. Moreover, protocols for the assessment of biodiversity associated to ARMS rely upon the use of molecular approaches and thus the use of such devices present the same problems described above for metabarcoding. The ARMS protocol of Leray and Knowlton (2015) proposed the use of the mt COI gene. However, the database for this gene is highly biased toward metazoans and may thus be limited in the detection of other groups (such as algae and unicellular eukaryotes). Other genes have been targeted for ecological studies (e.g., 18S rDNA, Logares et al., 2014a, 28S rDNA, Hirai et al., 2015, and the ITS region Tonge et al., 2014) and a combination of these genes and COI may give a more comprehensive assessment of diversity. In the future, molecular studies using ARMS may also investigate the functional ability of the assemblage using shotgun metagenomic techniques.

ASUs

Another example of standardized sampling devices for marine biodiversity assessment is represented by Artificial Substrate Units (ASUs; **Figure 8B**). ASUs are nylon pot scrubbers, which have been used to study recruitment and taxonomic composition for over 20 years (Menge et al., 1994, 2002, 2009; Gobin and Warwick, 2006; Underwood and Chapman, 2006; Hale et al., 2011). They are particularly used to mimic filamentous algae or kelp holdfasts (Menge et al., 1994), a preferred habitat for recruits of many species (e.g., mussels, Paine, 1974).

After their recovery, ASUs are traditionally processed to identify species by using their morphological characters (Menge et al., 2002; Underwood and Chapman, 2006; Hale et al., 2011). With the advent of metabarcoding, the diversity associated with ASUs has been assessed by combining morphological and molecular methods.

The advantages and disadvantages of ASUs are similar to those of the ARMS, which are detailed above. Comparing the two structures, ASUs are easier to deploy than ARMS and the materials needed to construct an ASU are less expensive than those used to build ARMS. Moreover, the processing of an ASU takes fewer person-hours per unit (18 person-hours per ARMS vs. 6 per ASU). This makes ASUs more amenable to fine-scale sampling, for instance to measure temporal changes in biodiversity. They would be a valuable contribution to current monitoring programs, which require intensive samplings. The use of ASUs in monitoring programs can be relatively simple (e.g., Hale et al., 2011). Another consequence of simpler processing is that there are fewer risks of deviation from standardized procedures for ASUs than for ARMS during the processing of samples. However, they do not sample the same ecosystem component as the ARMS, since the two devices mimic different habitats. The small size of the ASUs relative to the ARMS imposes a selection for smaller organisms and species, such that large-bodied organisms cannot be collected by using the ASUs.

High Resolution Sampling

Recent advances in robotic technologies provide new opportunities to conduct high-resolution sampling of patchily distributed organisms (such as zooplankton), by using AUV, carrying bottles for collecting discrete seawater samples and a sensor for gathering contextual environmental data. Environmental Sample Processors have been developed as stationary (moored) devices able to conduct *in situ* molecular assays (sandwich hybridization assay) by using 18S ribosomal RNA oligonucleotide probes, in order to detect actual plankton diversity (from calanoid and podoplean copepods, to larvae of barnacles, mussels, polychaete worms, brachyuran crabs, and invasive green crabs; *Carcinus maenas*; Harvey et al., 2012).

The Continuous Automated Litter and Plankton Sampler (CALPS) is a custom-made semiautomatic sampler which collects water using a pump system at a single depth along a predetermined transect as the ship sails. The system consists of a pump system and additional elements fitted onto the research

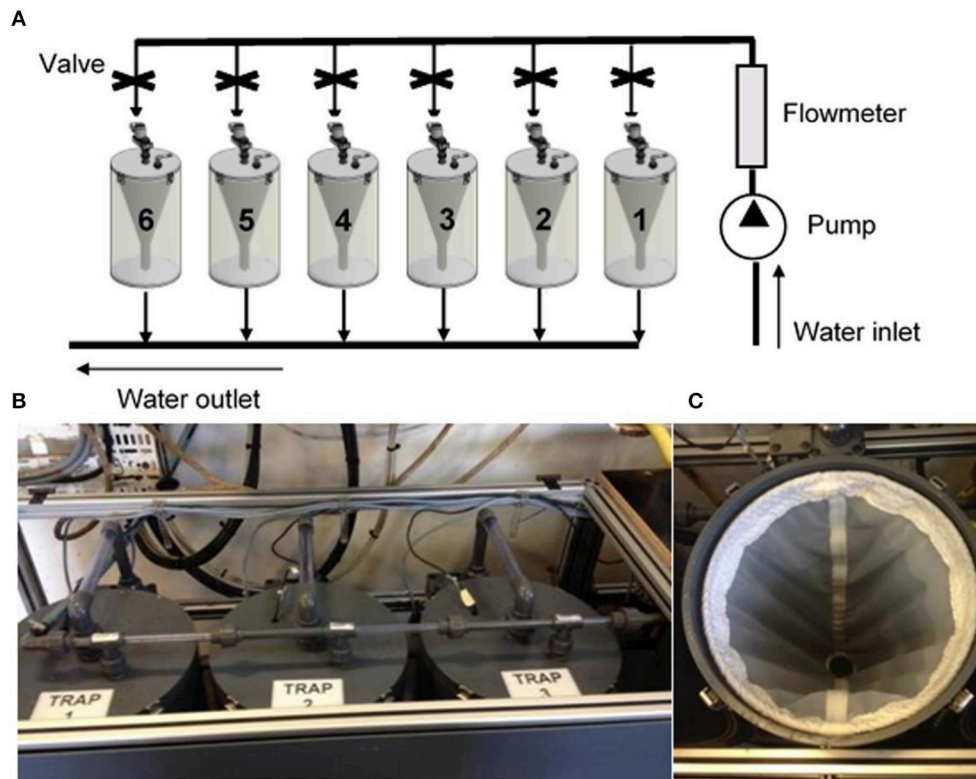


FIGURE 9 | CALPS system. (A) Schematic illustration of the CALPS system. **(B,C)** are photographs of the Trap system and inside plankton net (Pitois et al., 2016).

vessel. The additional elements include a water inlet of 20 cm diameter, a flowmeter, 6 cylinder traps and associated valves and level detectors to prevent overflowing and the system is controlled by computer (Figure 9). When activated, the system pumps sea water from a depth of 4 m at rates of between 35 and 45 L per minute, and distributes the water into one or more of the 6 possible traps. Each trap consists of a PVC cylinder (height: 73.3 cm, diameter: 28.0 cm) containing a plankton net (length 66.0 cm and diameter 26.5 cm) of chosen mesh-size. The volume of water filtered is measured with an electronic flowmeter. The performance of the CALPS against traditional vertical net sampling was evaluated in a study by Pitois et al. (2016). The authors concluded that the CALPS is suited to describe broad geographic patterns in zooplankton biodiversity and taxonomic composition; its particular advantage over more traditional vertical sampling methods is that it can be integrated within existing multidisciplinary surveys at little extra cost and without requiring additional survey time. These features make the CALPS a particularly useful tool as part of integrated monitoring of environmental status to underpin policy areas such as the MSFD.

Ocean Sampling Day

The Ocean Sampling Day (OSD) is a simultaneous sampling campaign of the world's coastal oceans which took place for the first time on the summer solstice (June 21st) in the year

2014 and was repeated in 2015 and 2016 (Kopf et al., 2015). In this way, the collected samples related in time, space and environmental parameters, will provide new insights regarding microbial diversity and function and contribute to the blue economy through the identification of novel, ocean-derived biotechnologies. Micro B3's OSD project aims to generate, in a single day and in a cost-effective way, the largest standardized marine microbial data set, complementary to what obtained by other large-scale sequencing projects. The standardized procedure including a centralized hub for laboratory work and data processing via the Micro B3 Information System, ensures the collection and the processing of sea water samples with a high level of interoperability and consistency between data points worldwide. All OSD data (i.e., sequences and contextual data) are archived and immediately made openly accessible without an embargo period (Ten Hoopen and Cochrane, 2014). OSD sampling sites are typically located in coastal regions within exclusive economic zones (EEZ) and thus the OSD data set provides a unique opportunity to test anthropogenic influences on microbial assemblages. The final aim is to create an OSD time-series indicators to assess environmental vulnerability and resilience of ecosystems and climatic impacts. In the long term such indicators may be incorporated into the Ocean Health Index (OHI) (Halpern et al., 2012), which currently does not include microorganisms due to the lack of reliable data. OSD has the potential to close that gap expanding oceanic monitoring toward

microbes. This could lead to a global system of harmonized observations to inform scientists and policy-makers, but also to raise public awareness for the major, unseen component of world's oceans.

CONCLUSIONS

There is an urgent need to improve our knowledge of the spatio-temporal variations of marine biodiversity and of the consequences of global changes on marine ecosystems. This should be done quickly, in real time, using harmonized, standardized and low-cost tools (Borja and Elliott, 2013), and extending our ability to monitor the deep-sea ecosystems (Danovaro et al., 2014; Corinaldesi, 2015). Recently developed technologies and instruments should help to determine not only the biodiversity but also the functioning of ecosystems, feeding the needs of the recently enacted Marine Strategy Framework Directive (Cardoso et al., 2010).

Some of the innovative methodologies and technologies described here (e.g., AUVs, high-resolution sampling instruments) are tested and validated in different geographical areas and they can help to achieve in real time information on different ecosystem components (from microbes to megafauna), rapidly and in a rigorous way at a lower cost than traditional ones. Other tools, especially molecular ones, e.g., metabarcoding, need further evaluation (Bourlat et al., 2013).

In this context, such innovative approaches for marine monitoring need to be further implemented through: (i) defining standardized manuals and protocols for sampling and sample processing; (ii) developing new indicator metrics and indices fitting the new approaches and also useful for policy and decision-making; (iii) integrating, in monitoring surveys, information on biodiversity with other data sources (CTD, remote sensing, multibeam, taxonomy databases) for an holistic marine ecosystem assessment.

REFERENCES

- Aguzzi, J., Company, J. B., Costa, C., Matabos, M., Azzurro, E., Mànuel, A., et al. (2012a). Biorhythms challenge to stock and biodiversity assessments: cabled observatories video-solutions. *Oceanogr. Mar. Biol. Ann. Rev.* 50, 233–284.
- Aguzzi, J., Company, J. B., Costa, C., Matabos, M., Azzurro, E., Mànuel, A., et al. (2012b). Challenges to the assessment of benthic populations and biodiversity as a result of rhythmic behaviour: video solutions from cabled observatories. *Oceanogr. Mar. Biol. Ann. Rev.* 50, 235. doi: 10.1201/b12157-6
- Ainsworth, T. D., Thurber, R. V., and Gates, R. D. (2010). The future of coral reefs: a microbial perspective. *Trends Ecol. Evol.* 25, 233–240. doi: 10.1016/j.tree.2009.11.001
- Alverson, A. J., and Kolnick, L. (2005). Intragenomic nucleotide polymorphism among small subunit (18S) rDNA paralogs in the diatom genus *Skeletonema* (Bacillariophyta). *J. Phycol.* 41, 1248–1257. doi: 10.1111/j.1529-8817.2005.00136.x
- Amaral-Zettler, L. A., McCliment, E. A., Ducklow, H. W., and Huse, S. M. (2009). A method for studying protistan diversity using massively parallel sequencing of V9 hypervariable regions of small-subunit ribosomal RNA genes. *PLoS ONE* 4:e6372. doi: 10.1371/journal.pone.0006372
- Andrade, H., Massabuau, J.-C., Cochrane, S., Ciret, P., Tran, D., Sow, M., et al. (2016). High frequency non-invasive (HFNI) bio-sensors as a potential

Innovative methods can improve monitoring and contribute to the definition of criteria for better conservation of marine biodiversity. While the potential of these approaches to work exists, further studies are needed before their complete implementation application in routine marine monitoring programmes.

AUTHOR CONTRIBUTIONS

RD and LC conceived the paper. All authors have contributed equally to the Introduction. RDan, LC, MB, SCar, AC, CC, AD, EG, JG, JF, IF, JP, AR, NR, and AB contributed to the section of molecular approaches. RDan, LC, ND, VM, SM, KS, ER, SCon, SG, SS contributed to the section of *in situ* instruments. RDan, LC, SCri, RDav, PG, RF, AK, PM, AN, EG, JG, IF, AR, CW, VS contributed to the section of remote sensing. RDan, LC, SCar, JP, ML, AEC, SP, SG, SC, and AB contributed to the section of innovative sampling methods. All authors have contributed equally to the discussion and conclusions. All authors reviewed the manuscript.

ACKNOWLEDGMENTS

This manuscript is a result of DEVOTES (DEVELOPMENT OF innovative Tools for understanding marine biodiversity and assessing good Environmental Status) project, funded by the European Union under the 7th Framework Programme, “The Ocean of Tomorrow” Theme (grant agreement no. 308392) (<http://www.devotes-project.eu>). Further financial assistance was provided to VS and ER by the European Union under the ENPI CBC Mediterranean Sea Basin Programme (Sustainability and Tourism in the Mediterranean—S&T Med Strategic Project). The contents of this article are the sole responsibility of the authors and can under no circumstances be regarded as reflecting the position of the European Union or of the Programme's management structures.

- tool for marine monitoring and assessments. *Front. Mar. Sci.* 3:187. doi: 10.3389/fmars.2016.00187
- Antoine, D., d'Ortenzio, F., Hooker, S. B., Bcu, G., Gentili, B., Tailliez, D., et al. (2008). Assessment of uncertainty in the ocean reflectance determined by three satellite ocean color sensors (MERIS, SeaWiFS and MODIS-A) at an offshore site in the Mediterranean Sea (BOUSSOLE project). *J. Geophys. Res. Oceans.* 113:C07013. doi: 10.1029/2007JC004472
- Appeltans, W., Ah Yong, S. T., Anderson, G., Angel, M. V., Artois, T., Bailly, N., et al. (2012). The magnitude of global marine species diversity. *Curr. Biol.* 22, 2189–2202. doi: 10.1016/j.cub.2012.09.036
- Aurin, D. A., and Dierssen, H. M. (2012). Advantages and limitations of ocean color remote sensing in CDOM-dominated, mineral-rich coastal and estuarine waters. *Remote Sens. Environ.* 125, 181–197. doi: 10.1016/j.rse.2012.07.001
- Aylagas, E., Borja, A., Irigoien, X., and Rodríguez-Ezpeleta, N. (2016). Benchmarking DNA metabarcoding for biodiversity-based monitoring and assessment. *Front. Mar. Sci.* 3:96. doi: 10.3389/fmars.2016.00096
- Aylagas, E., Borja, A., and Rodríguez-Ezpeleta, N. (2014). Environmental status assessment using DNA metabarcoding: towards a genetics based marine biotic index (gAMBI). *PLoS ONE* 9:e90529. doi: 10.1371/journal.pone.0090529
- Aylagas, E., and Rodríguez-Ezpeleta, N. (2016). “Analysis of Illumina MiSeq amplicon reads: application to benthic indices for environmental monitoring.” in *Methods in Molecular Biology: Marine Genomics Methods and Protocols*, ed

- 2167 S. Bourlat (New York, NY: Springer), 237–249. doi: 10.1007/978-1-4939-3774-
2168 5.16.
- 2169 Babin, M., Roesler, C. S., and Cullen, J. J. (2008). *Real-time Coastal Observing
2170 Systems for Marine Ecosystem Dynamics and Harmful Algal Blooms: Theory,
Instrumentation and Modelling*. Paris: UNESCO.
- 2171 Bacher, S. (2012). Still not enough taxonomists: reply to Joppa et al. *Trends Ecol.
2172 Evol.* 27, 65–66. doi: 10.1016/j.tree.2011.11.003
- 2173 Berg, T., Fürhaupter, K., Teixeira, H., Uusitalo, L., and Zampoukas, N.
2174 (2015). The Marine Strategy Framework Directive and the ecosystem-
2175 based approach—pitfalls and solutions. *Mar. Pollut. Bull.* 96, 18–28. doi:
10.1016/j.marpolbul.2015.04.050
- 2176 Besmer, M. D., Weissbrodt, D. G., Kratochvil, B. E., Sigrist, J. A., Weyland, M.
2177 S., and Hammes, F. (2014). The feasibility of automated online flow cytometry
2178 for *in-situ* monitoring of microbial dynamics in aquatic ecosystems. *Front.
Microbiol.* 5:265. doi: 10.3389/fmicb.2014.00265
- 2179 Best, M. M. R., Barnes, C. R., Bornhold, B., and Juniper, S. K. (2013). “Integrating
2180 continuous observatory data from the coast to the abyss: a multidisciplinary
2181 view of the ocean in four dimensions,” in *Sea floor observatories: A New Vision
2182 of the Earth from the Abyss*, eds P. Favali, A. D. Santis, L. Beranzoli (Berlin,
2183 Heidelberg: Springer), 500.
- 2184 Beuchel, F., Gulliksen, B., and Carroll, M. L. (2006). Long-term patterns of rocky
2185 bottom macrobenthic community structure in an Arctic fjord (Kongsfjorden,
2186 Svalbard) in relation to climate variability (1980–2003). *J. Mar. Syst.* 63, 35–48.
doi: 10.1016/j.jmarsys.2006.05.002
- 2187 Bik, H. M., Fournier, D., Sung, W., Bergeron, R. D., and Thomas, W. K. (2013).
2188 Intra-Genomic variation in the ribosomal repeats of nematodes. *PLoS ONE*
8:e78230. doi: 10.1371/journal.pone.0078230
- 2189 Bik, H. M., Porazinska, D. L., Creer, S., Caporaso, J. G., Knight, R., and Thomas,
2190 W. K. (2012). Sequencing our way towards understanding global eukaryotic
2191 biodiversity. *Trends Ecol. Evol.* 27, 233–243. doi: 10.1016/j.tree.2011.11.010
- 2192 Blondeau-Patissier, D., Tilstone, G. H., Martinez-Vicente, V., and Moore, G. F.
2193 (2004). Comparison of bio-optical marine products from SeaWiifs, MODIS and
2194 a bio-optical model with *in situ* measurements from Northern European waters.
J. Opt. A Pure Appl. Opt. 6, 875–889. doi: 10.1088/1464-4258/6/9/010
- 2195 Borja, A., and Elliott, M. (2013). Marine monitoring during an economic
2196 crisis: the cure is worse than the disease. *Mar. Pollut. Bull.* 68, 1–3. doi:
2197 10.1016/j.marpolbul.2013.01.041
- 2198 Borja, A., Elliott, M., Andersen, J. H., Cardoso, A. C., Carstensen, J., Ferreira, J. G.,
2199 et al. (2013). Good Environmental Status of marine ecosystems: what is it and
2200 how do we know when we have attained it? *Mar. Pollut. Bull.* 76, 16–27. doi:
10.1016/j.marpolbul.2013.08.042
- 2201 Borja, A., Galparsoro, I., Irigoien, X., Iriondo, A., Menchaca, I., Muxika, I., et al.
2202 (2011). Implementation of the European Marine Strategy Framework Directive:
2203 a methodological approach for the assessment of environmental status, from
2204 the Basque Country (Bay of Biscay). *Mar. Pollut. Bull.* 62, 889–904. doi:
10.1016/j.marpolbul.2011.03.031
- 2205 Bourlat, S. J., Borja, A., Gilbert, J., Taylor, M. I., Davies, N., Weisberg,
2206 S. B., et al. (2013). Genomics in marine monitoring: new opportunities
2207 for assessing marine health status. *Mar. Pollut. Bull.* 74, 19–31. doi:
10.1016/j.marpolbul.2013.05.042
- 2208 Brazelton, W. J., Ludwig, K. A., Sogin, M. L., Andreishcheva, E. N., Kelley,
2209 D. S., Shen, C.-C., et al. (2010). Archaea and bacteria with surprising
2210 microdiversity show shifts in dominance over 1,000-year time scales in
2211 hydrothermal chimneys. *Proc. Natl. Acad. Sci. U.S.A.* 107, 1612–1617. doi:
10.1073/pnas.0905369107
- 2212 Bricker, S., Longstaff, B., Dennison, W., Jones, A., Boicourt, K., Wicks, C., et al.
2213 (2007). *Effects of Nutrient Enrichment in the Nation's Estuaries: A Decade of
2214 Change NOAA Coastal ocean Program Decision Analysis, series No. 26*. Silver
2215 Spring, MD: National Centers for Coastal Ocean Science.
- 2216 Brouwer, R., Brouwer, S., Eleveld, M. A., Verbraak, M., Wagtenonk, A. J., and van
2217 der Woerd, H. J. (2016). Public willingness to pay for alternative management
2218 regimes of remote marine protected areas in the North Sea. *Marine Policy* 68,
195–204. doi: 10.1016/j.marpol.2016.03.001
- 2219 Brussaard, C. P. D., Marie, D., and Bratbak, G. (2000). Flow cytometric detection
2220 of viruses. *J. Virol. Methods* 85, 175–182. doi: 10.1016/S0166-0934(99)00167-6
- 2221 Burrows, M. T., Schoeman, D. S., Buckley, L. B., Moore, P., Poloczanska, E. S.,
2222 Brander, K. M., et al. (2011). The pace of shifting climate in marine and
2223 terrestrial ecosystems. *Science* 334, 652–655. doi: 10.1126/science.1210288
- 2224 Calvo-Díaz, A., Morán, X. A. G., and Suárez, L. A. (2008). Seasonality
2225 of picophytoplankton chlorophyll a and biomass in the central
2226 Cantabrian Sea, southern Bay of Biscay. *J. Mar. Syst.* 72, 271–281. doi:
10.1016/j.jmarsys.2007.03.008
- 2227 Caporaso, J. G., Lauber, C. L., Walters, W. A., Berg-Lyons, D., Lozupone, C. A.,
2228 Turnbaugh, P. J., et al. (2011). Global patterns of 16S rRNA diversity at a depth
2229 of millions of sequences per sample. *Proc. Natl. Acad. Sci. U.S.A.* 108(Suppl.),
4516–4522. doi: 10.1073/pnas.1000080107
- 2230 Cardoso, A. C., Cochrane, S., Doerner, H., Ferreira, J. G., Galgani, F., Hagebro,
2231 C., et al. (2010). *Scientific Support to the European Commission on the Marine
2232 Strategy Framework Directive. Management Group Report. Office for Official
2233 Publications of the European Communities*. Luxembourg: EUR 24336 EN, Joint
2234 Research Centre.
- 2235 Carew, M. E., Pettigrove, V. J., Metzeling, L., and Hoffmann, A. A.
2236 (2013). Environmental monitoring using next generation sequencing: rapid
2237 identification of macroinvertebrate bioindicator species. *Front. Zool.* 10:45. doi:
10.1186/1742-9994-10-45
- 2238 Carugati, L., Corinaldesi, C., Dell’Anno, A., and Danovaro, R. (2015). Metagenetic
2239 tools for the census of marine meiofaunal biodiversity: an overview. *Mar.
Genomics* 24(Pt 1), 11–20. doi: 10.1016/j.margen.2015.04.010
- 2240 Caruso, G., La Ferla, R., Azzaro, M., Zoppini, A., Marino, G., Petochi,
2241 T., et al. (2015). Microbial assemblages for environmental quality
2242 assessment: knowledge, gaps and usefulness in the European Marine
2243 Strategy Framework Directive. *Crit. Rev. Microbiol.* 42, 883–904. doi:
10.3109/1040841X.2015.1087380
- 2244 Casamayor, E. O., Ferrera, I., Cristina, X., Borrego, C. M., and Gasol, J. M.
2245 (2007). Flow cytometric identification and enumeration of photosynthetic
2246 sulfur bacteria and potential for ecophysiological studies at the single-cell level.
2247 *Environ. Microbiol.* 9, 1969–1985. doi: 10.1111/j.1462-2920.2007.01313.x
- 2248 Chariton, A. A., Court, L. N., Hartley, D. M., Colloff, M. J., and Hardy, C. M. (2010).
2249 Ecological assessment of estuarine sediments by pyrosequencing eukaryotic
2250 ribosomal DNA. *Front. Ecol. Environ.* 8, 233–238. doi: 10.1890/090115
- 2251 Christaki, U., Courties, C., Massana, R., Catala, P., Lebaron, P., Gasol, J. M.,
2252 et al. (2011). Optimized routine flow cytometric enumeration of heterotrophic
2253 flagellates using SYBR Green, I. *Limnol. Oceanogr. Methods* 9, 329–339. doi:
10.4319/lom.2011.9.329
- 2254 Cline, J., Braman, J. C., and Hogrefe, H. H. (1996). PCR fidelity of Pfu DNA
2255 polymerase and other thermostable DNA polymerases. *Nucleic Acids Res.* 24,
3546–3551. doi: 10.1093/nar/24.18.3546
- 2256 Connor, D. W., Gilliland, P. M., Golding, N., Robinson, P., Todd, D., and Verling,
2257 E. (2006). *UKSeaMap: The Mapping of Seabed and Water Column Features of
UK Seas*. Peterborough, ON: Joint Nature Conservation Committee.
- 2258 Corinaldesi, C. (2015). New perspectives in benthic deep-sea microbial ecology.
2259 *Front. Mar. Sci.* 2:17. doi: 10.3389/fmars.2015.00017
- 2260 Corinaldesi, C., Barucca, M., Luna, G. M., and Dell’Anno, A. (2011). Preservation,
2261 origin and genetic imprint of extracellular DNA in permanently anoxic
2262 deep-sea sediments. *Mol. Ecol.* 20, 642–654. doi: 10.1111/j.1365-294X.2010.
04958.x
- 2263 Corinaldesi, C., Beolchini, F., and Dell’Anno, A. (2008). Damage and degradation
2264 rates of extracellular DNA in marine sediments: implications for the
2265 preservation of gene sequences. *Mol. Ecol.* 17, 3939–3951. doi: 10.1111/j.1365-
294X.2008.03880.x
- 2266 Corinaldesi, C., Tangherlini, M., Luna, G. M., and Dell’anno, A. (2014).
2267 Extracellular DNA can preserve the genetic signatures of present and past viral
2268 infection events in deep hypersaline anoxic basins. *Proc. R. Soc. B Biol. Sci.*
2269 281:20133299. doi: 10.1098/rspb.2013.3299
- 2270 Costello, M. J., and Wilson, S. P. (2011). Predicting the number of known and
2271 unknown species in European seas using rates of description. *Global Ecol.
2272 Biogeogr.* 20, 319–330. doi: 10.1111/j.1466-8238.2010.00603.x
- 2273 Cowart, D. A., Pinheiro, M., Mouchel, O., Maguer, M., Grall, J., Miné, J., et al.
2274 (2015). Metabarcoding is powerful yet still blind: a comparative analysis of
2275 morphological and molecular surveys of seagrass communities. *PLoS ONE*
10:e0117562. doi: 10.1371/journal.pone.0117562
- 2276 Crain, C. M., Kroeker, K., and Halpern, B. S. (2008). Interactive and cumulative
2277 effects of multiple human stressors in marine systems. *Ecol. Lett.* 11, 1304–1315.
doi: 10.1111/j.1461-0248.2008.01253.x
- 2278 Cram, J. A., Chow, C.-E. T., Sachdeva, R., Needham, D. M., Parada, A. E.,
2279 Steele, J. A., et al. (2015). Seasonal and interannual variability of the marine
2280

- 2281 bacterioplankton community throughout the water column over ten years. *ISME J.* 9, 563–580. doi: 10.1038/ismej.2014.153
- 2282 Creer, S., Deiner, K., Frey, S., Porazinska, D., Taberlet, P., Thomas, W. K.,
2283 et al. (2016). The ecologist's field guide to sequence-based identification of
2284 biodiversity. *Methods Ecol. Evol.* 7, 1008–1018. doi: 10.1111/2041-210X.12574
- 2285 Creer, S., Fonseca, V. G., Porazinska, D. L., Giblin-Davis, R. M., Sung, W.,
2286 Power, D. M., et al. (2010). Ultrasequencing of the meiofaunal biosphere:
2287 practice, pitfalls and promises. *Mol. Ecol.* 19, 4–20. doi: 10.1111/j.1365-
2288 294X.2009.04473.x
- 2289 Cristina, S., D'Alimonte, D., Goela, P. C., Kajiyama, T., Icelly, J., Moore, G., et al.
2290 (2016). Standard and regional bio-optical algorithms for chlorophyll a estimates
2291 in the atlantic off the southwestern iberian peninsula. *IEEE Geosci. Remote Sens.
2292 Lett.* 13, 757–761. doi: 10.1109/LGRS.2016.2529182
- 2293 Cristina, S., Goela, P., Icelly, J. D., Newton, A., and Fragoso, B. (2009). Assessment
2294 of water-leaving reflectances of oceanic and coastal waters using MERIS satellite
2295 products off the southwest coast of Portugal. *J. Coast. Res.* 56, 1479–1483.
- 2296 Cristina, S., Icelly, J., Goela, P. C., DelValls, T. A., and Newton, A. (2015). Using
2297 remote sensing as a support to the implementation of the European Marine
2298 Strategy Framework Directive in SW Portugal. *Cont. Shelf Res.* 108, 169–177.
2299 doi: 10.1016/j.csr.2015.03.011
- 2300 Cristina, S., Moore, G. F., Goela, P. C., Icelly, J. D., and Newton, A. (2014). *In situ*
2301 validation of MERIS marine reflectance off the southwest Iberian Peninsula:
2302 assessment of vicarious adjustment and corrections for near-land adjacency.
2303 *Int. J. Remote Sens.* 35, 2347–2377. doi: 10.1080/01431161.2014.894657
- 2304 Danovaro, R. (2003). Pollution threats in the Mediterranean Sea: an overview.
2305 *Chem. Ecol.* 19, 15–32. doi: 10.1080/0275754031000081467
- 2306 Danovaro, R., and Gambi, C. (2002). Biodiversity and trophic structure of
2307 nematode assemblages in seagrass systems: evidence for a coupling with
2308 changes in food availability. *Mar. Biol.* 141, 667–677. doi: 10.1007/s00227-002-
2309 0857-y
- 2310 Danovaro, R., Gambi, C., Dell'Anno, A., Corinaldesi, C., Frascchetti, S., Vanreusel,
2311 A., et al. (2008). Exponential decline of deep-sea ecosystem functioning linked
2312 to benthic biodiversity loss. *Curr. Biol.* 18, 1–8. doi: 10.1016/j.cub.2007.11.056
- 2313 Danovaro, R., Gambi, C., Luna, G. M., and Mirto, S. (2004). Sustainable impact
2314 of mussel farming in the Adriatic Sea (*Mediterranean Sea*): evidence from
2315 biochemical, microbial and meiofaunal indicators. *Mar. Pollut. Bull.* 49,
2316 325–333. doi: 10.1016/j.marpolbul.2004.02.038
- 2317 Danovaro, R., Gambi, C., Manini, E., and Fabiano, M. (2000). Meiofauna
2318 response to a dynamic river plume front. *Mar. Biol.* 137, 359–370. doi:
2319 10.1007/s002270000353
- 2320 Danovaro, R., and Pusceddu, A. (2007). Biodiversity and ecosystem functioning in
2321 coastal lagoons: does microbial diversity play any role? *Estuar. Coast. Shelf Sci.*
2322 75, 4–12. doi: 10.1016/j.ecss.2007.02.030
- 2323 Danovaro, R., Snelgrove, P. V. R., and Tyler, P. (2014). Challenging the
2324 paradigms of deep-sea ecology. *Trends Ecol. Evol.* 29, 465–475. doi:
2325 10.1016/j.tree.2014.06.002
- 2326 Deagle, B. E., Jarman, S. N., Coissac, E., Pompanon, F., and Taberlet, P. (2014).
2327 DNA metabarcoding and the cytochrome c oxidase subunit I marker: not a
2328 perfect match. *Biol. Lett.* 10:20140562. doi: 10.1098/rsbl.2014.0562
- 2329 Dejean, T., Valentini, A., Miquel, C., Taberlet, P., Bellemain, E., and Miaud, C.
2330 (2012). Improved detection of an alien invasive species through environmental
2331 DNA barcoding: the example of the American bullfrog *Lithobates catesbeianus*.
2332 *J. Appl. Ecol.* 49, 953–959. doi: 10.1111/j.1365-2664.2012.02171.x
- 2333 del Giorgio, P. A., and Gasol, J. M. (2008). “Physiological structure and single-cell
2334 activity in marine bacterioplankton,” in *Microbial Ecology of the Oceans, 2nd
2335 Edn.*, ed D. L. Kirchman (Hoboken, NJ: John Wiley & Sons, Inc.), 243–298.
- 2336 Dell'Anno, A., Carugati, L., Corinaldesi, C., Riccioni, G., and Danovaro, R. (2015).
2337 Unveiling the biodiversity of deep-sea nematodes through metabarcoding:
2338 are we ready to bypass the classical taxonomy? *PLoS ONE* 10:e0144928. doi:
2339 10.1371/journal.pone.0144928
- 2340 Dell'Anno, A., Mei, M. L., Pusceddu, A., and Danovaro, R. (2002). Assessing the
2341 trophic state and eutrophication of coastal marine systems: a new approach
2342 based on the biochemical composition of sediment organic matter. *Mar. Pollut.
2343 Bull.* 44, 611–622. doi: 10.1016/S0025-326X(01)00302-2
- 2344 Derycke, S., Remerie, T., Vierstraete, B. A. T., Vanfleteren, J., Vincx, M., and Moens,
2345 T. (2005). Mitochondrial DNA variation and cryptic speciation within the free-
2346 living marine nematode *Pellioditis marina*. *Mar. Ecol. Progr. Ser.* 300, 91–103.
2347 doi: 10.3354/meps300091
- 2348 de Vargas, C., Audic, S., Henry, N., Decelle, J., Mahé, F., Logares, R., et al. (2015).
2349 Eukaryotic plankton diversity in the sunlit ocean. *Science* 348:1261605. doi:
2350 10.1126/science.1261605
- 2351 Doney, S. C., Ruckelshaus, M., Duffy, J. E., Barry, J. P., Chan, F., English, C. A.,
2352 et al. (2012). Climate change impacts on marine ecosystems. *Mar. Sci.* 4, 11–37.
2353 doi: 10.1146/annurev-marine-041911-111611
- 2354 Dong, M., Bryan, B. A., Connor, J. D., Nolan, M., and Gao, L. (2015). Land
2355 use mapping error introduces strongly-localised, scale-dependent uncertainty
2356 into land use and ecosystem services modelling. *Ecosyst. Serv.* 15, 63–74. doi:
2357 10.1016/j.ecoser.2015.07.006
- 2358 Dubelaar, G. B. J., Gerritzen, P. L., Beeker, A. E. R., Jonker, R. R., and Tangen, K.
2359 (1999). Design and first results of the cytobuoy: an autonomous flow cytometer
2360 with wireless datatransfer for *in situ* analysis of marine and fresh waters.
2361 *Cytometry* 37, 247–254.
- 2362 Edgar, R. C. (2010). Search and clustering orders of magnitude faster than BLAST,
2363 *Bioinformatics* 26, 2460–2461. doi: 10.1093/bioinformatics/btq461
- 2364 Edgar, R. C., Haas, B. J., Clemente, J. C., Quince, C., and Knight, R. (2011).
2365 UCHIME improves sensitivity and speed of chimera detection. *Bioinformatics*
2366 27, 2194–2200. doi: 10.1093/bioinformatics/btr381
- 2367 EEA, (2015). *State of Europe's seas, EEA Report No 2/2015*. Copenhagen: European
2368 Environment Agency.
- 2369 Elbrecht, V., and Leese, F. (2015). Can DNA-based ecosystem assessments quantify
2370 species abundance? Testing primer bias and biomass—sequence relationships
2371 with an innovative metabarcoding protocol. *PLoS ONE* 10:e0130324. doi:
2372 10.1371/journal.pone.0130324
- 2373 European Commission (2014). *Commission Report to the Council and the
2374 European Parliament. The First Phase of Implementation of the Marine Strategy
2375 Framework Directive (2008/56/EC). The European Commission's Assessment
2376 and Guidance*. Brussels.
- 2377 Farina, A., Pieretti, N., and Piccioli, L. (2011). The soundscape methodology for
2378 long-term bird monitoring: a Mediterranean Europe case-study. *Ecol. Inform.*
2379 6, 354–363. doi: 10.1016/j.ecoinf.2011.07.004
- 2380 Ferrera, I., Giner, C. R., Reñé, A., Camp, J., Massana, R., Gasol, J.
2381 M., et al. (2016). Evaluation of alternative high-throughput sequencing
2382 methodologies for the monitoring of marine picoplanktonic biodiversity based
2383 on rRNA gene amplicons. *Front. Mar. Sci.* 3:147. doi: 10.3389/fmars.2016.
2384 00147
- 2385 Galparsoro, I., Agrafojo, X., Roche, M., and Degrendele, K. (2015b). Comparison
2386 of supervised and unsupervised automatic classification methods for sediment
2387 types mapping using multibeam echosounder and grab sampling. *Ital. J. Geosci.*
2388 134, 41–49. doi: 10.3301/IJG.2014.19
- 2389 Galparsoro, I., Rodríguez, J. G., Menchaca, I., Quincoces, I., Garmendia, J. M.,
2390 and Borja, Á. (2015a). Benthic habitat mapping on the Basque continental
2391 shelf (SE Bay of Biscay) and its application to the European Marine Strategy
2392 Framework Directive. *J. Sea Res.* 100, 70–76. doi: 10.1016/j.seares.2014.
2393 09.013
- 2394 Gasol, J. M., and del Giorgio, P. A. (2000). Using flow cytometry for
2395 counting natural planktonic bacteria and understanding the structure
2396 of planktonic bacterial communities. *Sci. Mar.* 64, 197–224. doi:
2397 10.3989/scimar.2000.64n2197
- 2398 Gasol, J. M., and Morán, X. A. G. (2015). “Flow cytometric determination of
2399 microbial abundances and its use to obtain indices of community structure
2400 and relative activity,” in *Hydrocarbon and Lipid Microbiology Protocols*, eds
2401 T. J. McGenity, K. N. Timmis, and B. Nogales (Berlin, Heidelberg: Springer),
2402 159–187.
- 2403 Gibb, S. W., Cummings, D. G., Irigoien, X., Barlow, R. G., Fauzi, R., and Mantoura,
2404 C. (2001). Phytoplankton pigment chemotaxonomy of the northeastern
2405 Atlantic. *Deep Sea Res. II Top. Stud. Oceanogr.* 48, 795–823. doi: 10.1016/S0967-
2406 0645(00)00098-9
- 2407 Gilbert, J. A., Field, D., Swift, P., Newbold, L., Oliver, A., Smyth, T., et al.
2408 (2009). The seasonal structure of microbial communities in the Western
2409 English Channel. *Environ. Microbiol.* 11, 3132–3139. doi: 10.1111/j.1462-
2410 2920.2009.02017.x
- 2411 Gilbert, J. A., Steele, J. A., Caporaso, J. G., Steinbruck, L., Reeder, J., Temperton, B.,
2412 et al. (2012). Defining seasonal marine microbial community dynamics. *ISME
2413 J.* 6, 298–308. doi: 10.1038/ismej.2011.107
- 2414 Glenn, T. C. (2011). Field guide to next-generation DNA sequencers. *Mol. Ecol.
2415 Resour.* 11, 759–769. doi: 10.1111/j.1755-0998.2011.03024.x

- Gobin, J. F., and Warwick, R. M. (2006). Geographical variation in species diversity: a comparison of marine polychaetes and nematodes. *J. Exp. Mar. Biol. Ecol.* 330, 234–244. doi: 10.1016/j.jembe.2005.12.030
- Goela, P. C., Icely, J., Cristina, S. C. V., Danchenko, S., DelValls, T. A., and Newton, A. (2015). Using bio-optical parameters as a tool for detecting changes in the phytoplankton community (SW Portugal). *Estuar. Coast. Shelf Sci.* 167, 125–137. doi: 10.1016/j.ecss.2015.07.037
- Goela, P., Danchenko, S., Icely, J., Lubian, L., Cristina, S., and Newton, A. (2014). Using CHEMTAX to evaluate seasonal and interannual dynamics of the phytoplankton community off the South-west coast of Portugal. *Estuar. Coast. Shelf Sci.* 151, 112–123. doi: 10.1016/j.ecss.2014.10.001
- Gohin, F., Saulquin, B., Oger-Jeanerret, H., Lozac'h, L., Lampert, L., Lefebvre, A., et al. (2008). Towards a better assessment of the ecological status of coastal waters using satellite-derived chlorophyll-a concentrations. *Remote Sens. Environ.* 112, 3329–3340. doi: 10.1016/j.rse.2008.02.014
- Griffen, B. D., Belgrad, B. A., Cannizzo, Z. J., Knotts, E. R., and Hancock, E. R. (2016). Rethinking our approach to multiple stressor studies in marine environments. *Mar. Ecol. Prog. Ser.* 543, 273–281. doi: 10.3354/meps11595
- Haas, B. J., Gevers, D., Earle, A. M., Feldgarden, M., Ward, D. V., Giannoukos, G., et al. (2011). Chimeric 16S rRNA sequence formation and detection in Sanger and 454-pyrosequenced PCR amplicons. *Genome Res.* 21, 494–504. doi: 10.1101/gr.112730.110
- Hajibabaei, M., Shokralla, S., Zhou, X., Singer, G. A. C., and Baird, D. J. (2011). Environmental barcoding: a next-generation sequencing approach for biomonitoring applications using river benthos. *PLoS ONE* 6:e17497. doi: 10.1371/journal.pone.0017497
- Hale, R., Calosi, P., McNeill, L., Mieszowska, N., and Widdicombe, S. (2011). Predicted levels of future ocean acidification and temperature rise could alter community structure and biodiversity in marine benthic communities. *Oikos* 120, 661–674. doi: 10.1111/j.1600-0706.2010.19469.x
- Halpern, B. S., Longo, C., Hardy, D., McLeod, K. L., Samhuri, J. F., Katona, S. K., et al. (2012). An index to assess the health and benefits of the global ocean. *Nature* 488, 615–620. doi: 10.1038/nature11397
- Halpern, B. S., Walbridge, S., Selkoe, K. A., Kappel, C. V., Micheli, F., D'Agrosa, C., et al. (2008). A global map of human impact on marine ecosystems. *Science* 319, 948–952. doi: 10.1126/science.1149345
- Harvey, E. T., Kratzer, S., and Philipson, P. (2015). Satellite-based water quality monitoring for improved spatial and temporal retrieval of chlorophyll-a in coastal waters. *Remote Sens. Environ.* 158, 417–430. doi: 10.1016/j.rse.2014.11.017
- Harvey, J. B., Ryan, J. P., Marin, R., Preston, C. M., Alvarado, N., Scholin, C. A., et al. (2012). Robotic sampling, *in situ* monitoring and molecular detection of marine zooplankton. *J. Exp. Mar. Biol. Ecol.* 413, 60–70. doi: 10.1016/j.jembe.2011.11.022
- Harwood, V. J., Staley, C., Badgley, B. D., Borges, K., and Korajkic, A. (2014). Microbial source tracking markers for detection of fecal contamination in environmental waters: relationships between pathogens and human health outcomes. *FEMS Microbiol. Rev.* 38, 1–40. doi: 10.1111/1574-6976.12031
- Hayes, K. R., Cannon, R., Neil, K., and Inglis, G. (2005). Sensitivity and cost considerations for the detection and eradication of marine pests in ports. *Mar. Pollut. Bull.* 50, 823–834. doi: 10.1016/j.marpolbul.2005.02.032
- Heads, M. (2015). The relationship between biogeography and ecology: envelopes, models, predictions. *Biol. J. Linn. Soc.* 115, 456–468. doi: 10.1111/bij.12486
- Hengl, T., Heuvelink, G. B., Kempen, B., Leenaars, J. G., Walsh, M. G., and Shepherd, K. D. (2015). Mapping soil properties of Africa at 250 m resolution: random forests significantly improve current predictions. *PLoS ONE* 10:e0125814. doi: 10.1371/journal.pone.0125814
- Hewitt, J. E., Anderson, M. J., and Thrush, S. F. (2005). Assessing and monitoring ecological community health in marine systems. *Ecol. Appl.* 15, 942–953. doi: 10.1890/04-0732
- Higgins, H. W., Wright, S. W., and Schlüter, L. (2011). “Quantitative interpretation of chemotaxonomic pigment data,” in *Phytoplankton Pigments: Characterization, Chemotaxonomy and Applications in Oceanography*, eds S. Roy, C. A. Llewellyn, E. S. Egeland, and G. Johnsen (Cambridge; New York, NY: Cambridge University Press), 257–313. doi: 10.1017/cbo9780511732263.010
- Hirai, J., Kuriyama, M., Ichikawa, T., Hidaka, K., and Tsuda, A. (2015). A metagenetic approach for revealing community structure of marine planktonic copepods. *Mol. Ecol. Resour.* 15, 68–80. doi: 10.1111/1755-0998.12294
- Hoegh-Guldberg, O., and Bruno, J. F. (2010). The impact of climate change on the World's marine ecosystems. *Science* 328, 1523–1528. doi: 10.1126/science.1189930
- IOCCG (2009). *Partition of the Ocean into Ecological Provinces: Role of Ocean-Colour Radiometry, volume No. 9 of Reports of the International Ocean Colour Coordinating Group*. Dartmouth, NS: IOCCG.
- Jenner, R. A. (2004). Accepting partnership by submission? Morphological phylogenetics in a molecular millennium. *Syst. Biol.* 53, 333–342. doi: 10.1080/10635150490423962
- Jerde, C. L., Mahon, A. R., Chadderton, W. L., and Lodge, D. M. (2011). “Sight-unseen” detection of rare aquatic species using environmental DNA. *Conserv. Lett.* 4, 150–157. doi: 10.1111/j.1755-263X.2010.00158.x
- Knudsen, F. R., and Larsson, P. (2009). Discriminating the diel vertical migration of fish and Chaoborus flavicans larvae in a lake using a dual-frequency echo sounder. *Aquat. Living Resour.* 22, 273–280. doi: 10.1051/alr/2009029
- Kopf, A., Bica, M., Kottmann, R., Schnetzer, J., Kostadinov, I., Lehmann, K., et al. (2015). The ocean sampling day consortium. *Gigascience* 4, 1–5. doi: 10.1186/s13742-015-0066-5
- Kratzer, S., Brockmann, C., and Moore, G. (2008). Using MERIS full resolution data to monitor coastal waters - A case study from Himmerfjorden, a fjord-like bay in the northwestern Baltic Sea. *Remote Sens. Environ.* 112, 2284–2300. doi: 10.1016/j.rse.2007.10.006
- Kurekin, A. A., Miller, P. I., and Van der Woerd, H. J. (2014). Satellite discrimination of *Karenia mikimotoi* and *Phaeocystis* harmful algal blooms in European coastal waters: merged classification of ocean colour data. *Harmful Algae* 31, 163–176. doi: 10.1016/j.hal.2013.11.003
- Le Bris, N., Sarradin, P. M., Birot, D., and Alayse-Danet, A. M. (2000). A new chemical analyzer for *in situ* measurement of nitrate and total sulfide over hydrothermal vent biological communities. *Mar. Chem.* 72, 1–15. doi: 10.1016/S0304-4203(00)00057-8
- Leray, M., and Knowlton, N. (2015). DNA barcoding and metabarcoding of standardized samples reveal patterns of marine benthic diversity. *Proc. Natl. Acad. Sci. U.S.A.* 112, 2076–2081. doi: 10.1073/pnas.1424997112
- Leray, M., and Knowlton, N. (2016). Censusing marine eukaryotic diversity in the twenty-first century. *Philos. Trans. R. Soc. B.* 371:20150331. doi: 10.1098/rstb.2015.0331
- Le Traon, P. Y., Antoine, D., Bentamy, A., Bonekamp, H., Breivik, L. A., Chapron, B., et al. (2015). Use of satellite observations for operational oceanography: recent achievements and future prospects. *J. Oper. Oceanogr.* 8, s12–s27. doi: 10.1080/1755876x.2015.1022050
- Lewis, J. M., Medlin, L. K., and Raine, R. (Eds.). (2012). *MIDTAL (Microarrays for the Detection of Toxic Algae): A Protocol for a Successful Microarray Hybridisation and Analysis*. Koenigstein: ARG Gantner Verlag KG.
- Li, W. K. W. (1997). Cytometric diversity in marine ultraphytoplankton. *Limnol. Oceanogr.* 42, 874–880. doi: 10.4319/lo.1997.42.5.0874
- Lindeque, P. K., Parry, H. E., Harmer, R. A., Somersfield, P. J., and Atkinson, A. (2013). Next generation sequencing reveals the hidden diversity of zooplankton assemblages. *PLoS ONE* 8:e81327. doi: 10.1371/journal.pone.0081327
- Liu, S., Yao, P., Yu, Z., Li, D., Deng, C., and Zhen, Y. (2014). HPLC pigment profiles of 31 harmful algal bloom species isolated from the coastal sea areas of China. *J. Ocean Univ. China* 13, 941–950. doi: 10.1007/s11802-014-2448-1
- Logares, R., Audic, S., Bass, D., Bittner, L., Boutte, C., Christen, R., et al. (2014a). Patterns of rare and abundant marine microbial eukaryotes. *Curr. Biol.* 24, 813–821. doi: 10.1016/j.cub.2014.02.050
- Logares, R., Sunagawa, S., Salazar, G., Cornejo-Castillo, F. M., Ferrera, I., Sarmiento, H., et al. (2014b). Metagenomic 16S rDNA Illumina tags are a powerful alternative to amplicon sequencing to explore diversity and structure of microbial communities. *Environ. Microbiol.* 16, 2659–2671. doi: 10.1111/1462-2920.12250
- Lu, X., Zhang, X.-X., Wang, Z., Huang, K., Wang, Y., Liang, W., et al. (2015). Bacterial pathogens and community composition in advanced sewage treatment systems revealed by metagenomics analysis based on high-throughput sequencing. *PLoS ONE* 10:e0125549. doi: 10.1371/journal.pone.0125549
- Mackey, M., Mackey, D., Higgins, H., and Wright, S. (1996). CHEMTAX - a program for estimating class abundances from chemical markers: application

- to HPLC measurements of phytoplankton. *Mar. Ecol. Prog. Ser.* 114, 265–283. doi: 10.3354/meps144265
- Mairota, P., Cafarelli, B., Didham, R. K., Lovergine, F. P., Lucas, R. M., and Nagendra, H. (2015). Challenges and opportunities in harnessing satellite remote-sensing for biodiversity monitoring. *Ecol. Inform.* 30, 207–214. doi: 10.1016/j.ecoinf.2015.08.006
- Mangoni, O., Basset, A., Bergamasco, A., Carrada, G. C., Margiotta, F., Passarelli, A., et al. (2013). A case study on the application of the MSFD to Mediterranean coastal systems: the Po plume, as a transitional water system in the Northern Adriatic basin. *Trans. Waters Bull.* 7, 175–201. doi: 10.1285/i1825229Xv7n2p175
- Mangoni, O., Imperatore, C., Tomas, C. R. Costantino, V., Saggiomo, V., and Mangoni, A. (2011). The new carotenoid pigment moraxanthin associated with a toxic microalgae. *Mar. Drugs* 9, 242–255. doi: 10.3390/md9020242
- Marie, D., Simon, N., and Vault, D. (2005). “Phytoplankton cell counting by flow cytometry,” in *Algal Culturing Techniques*, ed R. A. Andersen (Burlington, MA: Academic Press), 1–17. doi: 10.1016/b978-012088426-1/50018-4
- Marine Strategy Framework Directive (2008). *Directive 2008/56/EC of the European Parliament and of the Council of 17 June 2008 Establishing a Framework for Community Action in the Field of Marine Environmental Policy*. Official Journal of European Union, L 164/19.
- Mascaro, J., Asner, G. P., Knapp, D. E., Kennedy-Bowdoin, T., Martin, R. E., Anderson, C., et al. (2014). A tale of two “forests”: Random Forest machine learning aids tropical forest carbon mapping. *PLoS ONE* 9:e85993. doi: 10.1371/journal.pone.0085993
- Massana, R., Gobet, A., Audic, S., Bass, D., Bittner, L., Boutte, C., et al. (2015). Marine protist diversity in European coastal waters and sediments as revealed by high-throughput sequencing. *Environ. Microbiol.* 17, 4035–4049. doi: 10.1111/1462-2920.12955
- Mathewson, H. A., and Morrison, M. L. (2015). “The misunderstanding of habitat,” in *Wildlife Habitat Conservation: Concepts, Challenges, and Solutions*, eds M. L. Morrison and H. A. Mathewson (Baltimore, MD: JHU Press), 3–8.
- McManus, G. B., and Katz, L. A. (2009). Molecular and morphological methods for identifying plankton: what makes a successful marriage? *J. Plankton Res.* 31, 1119–1129. doi: 10.1093/plankt/fbp061
- Menge, B. A., Berlow, E. L., Blanchette, C. A., Navarrete, S. A., and Yamada, S. B. (1994). The keystone species concept: variation in interaction strength in a rocky intertidal habitat. *Ecol. Monogr.* 64, 249–286. doi: 10.2307/2937163
- Menge, B. A., Chan, F., Nielsen, K. J., Di Lorenzo, E., and Lubchenco, J. (2009). Climatic variation alters supply-side ecology: impact of climate patterns on phytoplankton and mussel recruitment. *Ecol. Monogr.* 79, 379–395. doi: 10.1890/08-2086.1
- Menge, B. A., Sanford, E., Daley, B. A., Freidenburg, T. L., Hudson, G., and Lubchenco, J. (2002). Inter-hemispheric comparison of bottom-up effects on community structure: insights revealed using the comparative-experimental approach. *Ecol. Res.* 17, 1–16. doi: 10.1046/j.1440-1703.2002.00458.x
- Miller, P. I., and Christodoulou, S. (2014). Frequent locations of ocean fronts as an indicator of pelagic diversity: application to marine protected areas and renewables. *Marine Policy* 45, 318–329. doi: 10.1016/j.marpol.2013.09.009
- Miller, P. I., Shutler, J. D., Moore, G. F., and Groom, S. B. (2006). SeaWiFS discrimination of harmful algal bloom evolution. *Int. J. Remote Sens.* 27, 2287–2301. doi: 10.1080/01431160500396816
- Mills, G., and Fones, G. (2012). A review of *in situ* methods and sensors for monitoring the marine environment. *Sens. Rev.* 32, 17–28. doi: 10.1108/02602281211197116
- Minster, J. F., and Connolly, N. (2006). *Navigating the Future – III Updated Synthesis of Perspectives on Marine Science and Technology in Europe*. European Science Foundation, Position Paper 8, 71.
- Mora, C., Wei, C. L., Rollo, A., Amaro, T., Baco, A. R., Billett, D., et al. (2013). Biotic and human vulnerability to projected changes in ocean biogeochemistry over the 21st century. *PLoS Biol.* 11:e1001682. doi: 10.1371/journal.pbio.1001682
- Morán, X. A. G., Alonso-Sáez, L., Nogueira, E., Ducklow, H. W., González, N., López-Urrutia, Á., et al. (2015). More, smaller bacteria in response to ocean’s warming? *Proc. R. Soc. B* 282:20150371. doi: 10.1098/rspb.2015.0371
- Morán, X. A. G., López-Urrutia, A., Calvo-Díaz, A., and Li, W. K. W. (2010). Increasing importance of small phytoplankton in a warmer ocean. *Glob. Chang. Biol.* 16, 1137–1144. doi: 10.1111/j.1365-2486.2009.01960.x
- Moreno, M., Semprucci, F., Vezzulli, L., Balsamo, M., and Fabiano, M. (2011). The use of nematodes in assessing ecological quality status in the Mediterranean coastal ecosystems. *Ecol. Indic.* 11, 328–336. doi: 10.1016/j.ecolind.2010.05.011
- Newton, R. J., Vandewalle, J. L., Borchardt, M. A., Gorelick, M. H., and McLellan, S. L. (2011). Lachnospiraceae and Bacteroidales alternative fecal indicators reveal chronic human sewage contamination in an urban harbor. *Appl. Environ. Microbiol.* 77, 6972–6981. doi: 10.1128/AEM.05480-11
- Nöges, P., Argillier, C., Borja, Á., Garmendia, J. M., Hanganu, J., Kodeš, V., et al. (2016). Quantified biotic and abiotic responses to multiple stress in freshwater, marine and ground waters. *Sci. Total Environ.* 540, 43–52. doi: 10.1016/j.scitotenv.2015.06.045
- Noiva, S., Chust, G., Sagarminaga, Y., Revilla, M., Borja, A., and Franco, J. (2012). Water quality assessment using satellite-derived chlorophyll-a within the European directives, in the southeastern Bay of Biscay. *Mar. Pollut. Bull.* 64, 739–750. doi: 10.1016/j.marpolbul.2012.01.020
- Olson, R. J., and Sosik, H. M. (2007). A submersible imaging-in-flow instrument to analyze nano- and microplankton: imaging flowCytobot. *Limnol. Oceanogr. Methods* 5, 195–203. doi: 10.4319/lom.2007.5.195
- Örnólfsson, E. B., Pinckney, J. L. and Tester, P. A., (2003). Quantification of the relative abundance of the toxic dinoflagellate *Karenia brevis* (Dinophyta), using unique phytopigments. *J. Phycol.* 39, 449–457. doi: 10.1046/j.1529-8817.2003.01219.x
- Orpin, A. R., and Kostylev, V. E. (2006). Towards a statistically valid method of textural sea floor characterization of benthic habitats. *Mar. Geol.* 225, 209–222. doi: 10.1016/j.margeo.2005.09.002
- Paine, R. T. (1974). Intertidal community structure. Experimental studies on the relationship between a dominant competitor and its principal predator. *Oecologia* 15, 93–120. doi: 10.1007/BF00345739
- Payne, R. J. (2013). Seven reasons why protists make useful bioindicators. *Acta Protozool.* 52, 105. doi: 10.4467/16890027AP.13.0011.1108
- Pearman, J. K., Anlauf, H., Irigoien, X., and Carvalho, S. (2016a). Please mind the gap—Visual census and cryptic biodiversity assessment at central Red Sea coral reefs. *Mar. Environ. Res.* 118, 20–30. doi: 10.1016/j.marenvres.2016.04.011
- Pearman, J. K., and Irigoien, X. (2015). Assessment of zooplankton community composition along a depth profile in the Central Red Sea. *PLoS ONE* 10:e0133487. doi: 10.1371/journal.pone.0133487
- Pearman, J. K., Irigoien, X., and Carvalho, S. (2016b). Extracellular DNA amplicon sequencing reveals high levels of benthic eukaryotic diversity in the central Red Sea. *Mar. Genomics* 26, 29–39. doi: 10.1016/j.margen.2015.10.008
- Peters, S., Brockmann, C., Eleveld, M., Pasterkamp, R., H., Van der Woerd, Ruddick, K., et al. (2005). “Regional chlorophyll retrieval algorithms for North Sea waters: intercomparison and validation,” in *Proceedings of the MERIS (A) ATSR Workshop 2005 (ESA SP-597)*, ed H. Lacoste (Frascati: CDROM), 19.1.
- Petersen, W., Wehde, H., Krasemann, H., Colijn, F., and Schroeder, F. (2008). FerryBox and MERIS - Assessment of coastal and shelf sea ecosystems by combining *in situ* and remotely sensed data. *Estuarine Coast. Shelf Sci.* 77, 296–307. doi: 10.1016/j.ecss.2007.09.023
- Pettorelli, N., Safi, K., and Turner, W. (2014). Satellite remote sensing, biodiversity research and conservation of the future. *Philos. Trans. R. Soc. Lond. B Biol. Sci.* 369:20130190. doi: 10.1098/rstb.2013.0190
- Pieretti, N., Farina, A., and Morri, D. (2011). A new methodology to infer the singing activity of an avian community: the Acoustic Complexity Index (ACI). *Ecol. Indic.* 11, 868–873. doi: 10.1016/j.ecolind.2010.11.005
- Pitolo, S. G., Bouch, P., Creach, V., and van der Kooij, J. (2016). Comparison of zooplankton data collected by a continuous semi-automatic sampler (CALPS) and a traditional vertical ring net. *J. Plank. Res.* 38, 931–943. doi: 10.1093/plankt/fbw044

- 2623 Pusceddu, A., Bianchelli, S., Gambi, C., and Danovaro, R. (2011). Assessment of
2624 benthic trophic status of marine coastal ecosystems: significance of meiofaunal
2625 rare taxa. *Estuar. Coast. Shelf Sci.* 93, 420–430. doi: 10.1016/j.eccs.2011.05.012
- 2626 Pusceddu, A., Dell'Anno, A., Fabiano, M., and Danovaro, R. (2009). Quantity
2627 and bioavailability of sediment organic matter as signatures of benthic trophic
2628 status. *Mar. Ecol. Prog. Ser.* 375, 41–52. doi: 10.3354/meps07735
- 2629 Pusceddu, A., Frascchetti, S., Mirto, S., Holmer, M., and Danovaro, R. (2007). Effects
2630 of intensive mariculture on sediment biochemistry. *Ecol. Appl.* 17, 1366–1378.
2631 doi: 10.1890/06-2028.1
- 2632 Quince, C., Lanzen, A., Davenport, R. J., and Turnbaugh, P. J. (2011).
2633 Removing noise from pyrosequenced amplicons. *BMC Bioinformatics* 12:38.
2634 doi: 10.1186/1471-2105-12-38
- 2635 Radom, M., Rybarczyk, A., Kottmann, R., Formanowicz, P., Szachniuk, M.,
2636 Glöckner, F. O., et al. (2012). Poseidon: an information retrieval and
2637 extraction system for metagenomic marine science. *Ecol. Inform.* 12, 10–15. doi:
2638 10.1016/j.ecoinf.2012.07.003
- 2639 Ranasinghe, J. A., Stein, E. D., Miller, P. E., and Weisberg, S. B. (2012). Performance
2640 of two southern California benthic community condition indices using species
2641 abundance and presence-only data: relevance to DNA barcoding. *PLoS ONE*
2642 7:e40875. doi: 10.1371/journal.pone.0040875
- 2643 Randin, C. F., Dirnböck, T., Dullinger, S., Zimmermann, N. E., Zappa, M., and
2644 Guisan, A. (2006). Are niche-based species distribution models transferable in
2645 space? *J. Biogeogr.* 33, 1689–1703. doi: 10.1111/j.1365-2699.2006.01466.x
- 2646 Rivas, A. L., Dogliotti, A. I., and Gagliardini, D. A. (2006). Seasonal variability in
2647 satellite-measured surface chlorophyll in the Patagonian Shelf. *Cont. Shelf Res.*
2648 26, 703–720. doi: 10.1016/j.csr.2006.01.013
- 2649 Roy, S., Llewellyn, C. A., Egeland, E. S., and Johnsen, G. (2011). *Phytoplankton*
2650 *Pigments-Characterization, Chemotaxonomy and Applications in Oceanography*.
2651 Cambridge: Cambridge University Press.
- 2652 Salazar, G., Cornejo-Castillo, F. M., Benitez-Barrios, V., Fraile-Nuez, E., Alvarez-
2653 Salgado, X. A., Duarte, C. M., et al. (2016). Global diversity and biogeography of
2654 deep-sea pelagic prokaryotes. *ISME J.* 10, 596–608. doi: 10.1038/ismej.2015.137
- 2655 Scales, K. L., Miller, P. I., Hawkes, L. A., Ingram, S. N., Sims, D. W., and Votier, S.
2656 C. (2014). On the Front Line: frontal zones as priority at-sea conservation areas
2657 for mobile marine vertebrates. *J. Appl. Ecol.* 51, 1575–1583. doi: 10.1111/1365-
2658 2664.12330
- 2659 She, J., Allen, I., Buch, E., Crise, A., Johannessen, J. A., Le Traon, P. Y., et al. (2016).
2660 Developing European operational oceanography for Blue Growth, climate
2661 change adaptation and mitigation and ecosystem-based management. *Ocean*
2662 *Sci. Discuss.* 2016, 1–59. doi: 10.5194/os-2015-103
- 2663 Shi, X. L., Marie, D., Jardillier, L., Scanlan, D. J., and Vault, D. (2009). Groups
2664 without cultured representatives dominate eukaryotic picophytoplankton
2665 in the oligotrophic south east Pacific Ocean. *PLoS ONE* 4:e7657. doi:
2666 10.1371/journal.pone.0007657
- 2667 Silke, J., O'Beirn, F., and Cronin, M. (2005). *Karenia Mikimotoi: An Exceptional*
2668 *Dinoflagellate Bloom in Western Irish Waters, Summer*. Marine Environment
2669 and Health Series 21. Galway: Marine Institute, 48. Available online at: <http://hdl.handle.net/10793/240>
- 2670 Smith, W. O. Jr., Tozzi, S., DiTullio, G. R., Dinnimand, M., Mangoni, O., Modigh,
2671 M., and Saggiomo, V. (2010). Phytoplankton photosynthetic pigments in the
2672 Ross Sea: patterns and relationships among functional groups. *J. Mar. Syst.* 82,
2673 177–185. doi: 10.1016/j.jmarsys.2010.04.014
- 2674 Smyth, R. P., Schlub, T. E., Grimm, A., Venturi, V., Chopra, A., Mallal,
2675 S., et al. (2010). Reducing chimera formation during PCR amplification
2676 to ensure accurate genotyping. *Gene* 469, 45–51. doi: 10.1016/j.gene.2010.
2677 08.009
- 2678 Sogin, M. L., Morrison, H. G., Huber, J. A., Mark Welch, D., Huse, S. M.,
2679 Neal, P. R., et al. (2006). Microbial diversity in the deep sea and the
2680 underexplored “rare biosphere”. *Proc. Natl. Acad. Sci. U.S.A.* 103, 12115–12120.
2681 doi: 10.1073/pnas.0605127103
- 2682 Solan, M., Germano, J. D., Rhoads, D. C., Smith, C., Michaud, E., Parry, D., et al.
2683 (2003). Towards a greater understanding of pattern, scale and process in marine
2684 benthic systems: a picture is worth a thousand worms. *J. Exp. Mar. Biol. Ecol.*
2685 285, 313–338. doi: 10.1016/S0022-0981(02)00535-X
- 2686 Sørensen, K., Aas, E., and Hokedal, J. (2007). Validation of MERIS water products
2687 and bio-optical relationships in the Skagerrak. *Int. J. Remote Sens.* 28, 555–568.
2688 doi: 10.1080/01431160600815566
- 2689 Staley, J. T., and Konopka, A. (1985). Measurement of *in situ* activities of
2690 nonphotosynthetic microorganisms in aquatic and terrestrial habitats. *Annu.*
2691 *Rev. Microbiol.* 39, 321–346. doi: 10.1146/annurev.mi.39.100185.001541
- 2692 Steinger, S., and Weibel, R. (2005). “Relations and structures in categorical maps,”
2693 in *The 8th ICA Workshop on Generalisation and Multiple Representation* (A
2694 Coruña).
- 2695 Stoeck, T., Bass, D., Nebel, M., Christen, R., Jones, M. D., Breiner, H. W., et al.
2696 (2010). Multiple marker parallel tag environmental DNA sequencing reveals
2697 a highly complex eukaryotic community in marine anoxic water. *Mol. Ecol.*
2698 19(Suppl. 1), 21–31. doi: 10.1111/j.1365-294X.2009.04480.x
- 2699 Stomp, M., Huisman, J., Vörös, L., Pick, F. R., Laamanen, M., Haverkamp, T., et al.
2700 (2007). Colourful coexistence of red and green picocyanobacteria in lakes and
2701 seas. *Ecol. Lett.* 10, 290–298. doi: 10.1111/j.1461-0248.2007.01026.x
- 2702 Stoner, A. W., Ryer, C. H., Parker, S. J., Auster, P. J., and Wakefield, W. W. (2008).
2703 Evaluating the role of fish behavior in surveys conducted with underwater
2704 vehicles. *Can. J. Fish. Aquat. Sci.* 65, 1230–1243. doi: 10.1139/F08-032
- 2705 Suberg, L., Wynn, R. B., Kooij, J., Fernand, L., Fielding, S., Guihen, D.,
2706 et al. (2014). Assessing the potential of autonomous submarine gliders for
2707 ecosystem monitoring across multiple trophic levels (plankton to cetaceans)
2708 and pollutants in shallow shelf seas. *Methods Oceanogr.* 10, 70–89. doi:
2709 10.1016/j.mio.2014.06.002
- 2710 Swallow, J. E., Ribalet, F., and Armbrust, E. V. (2011). SeaFlow: A novel underway
2711 flow-cytometer for continuous observations of phytoplankton in the ocean.
2712 *Limnol. Oceanogr. Methods* 9, 466–477. doi: 10.4319/lom.2011.9.466
- 2713 Taberlet, P., Coissac, E., Pompanon, F., Brochmann, C., and Willerslev, E. (2012).
2714 Towards next-generation biodiversity assessment using DNA metabarcoding.
2715 *Mol. Ecol.* 21, 2045–2050. doi: 10.1111/j.1365-294X.2012.05470.x
- 2716 Tangherlini, M., Corinaldesi, C., and Dell'Anno, A. (2012). Viral metagenomics:
2717 a new and complementary tool for environmental quality assessment. *Chem.*
2718 *Ecol.* 28, 497–501. doi: 10.1080/02757540.2012.716045
- 2719 Taylor, S. M. (2009). Transformative ocean science through the VENUS and
2720 NEPTUNE Canada ocean observing systems. *Nucl. Instrum. Methods Phys. Res.*
2721 *SECT A* 602, 63–67. doi: 10.1016/j.nima.2008.12.019
- 2722 Telford, M. J., and Holland, P. W. H. (1997). Evolution of 28S Ribosomal DNA
2723 in Chaetognaths: duplicate genes and molecular phylogeny. *J. Mol. Evol.* 44,
2724 134–144. doi: 10.1007/PL00006130
- 2725 Ten Hoopen, P., and Cochrane, G. (2014). *Micro B3 Consortium Ocean Sampling*
2726 *Day Handbook - Version of June 2014*. Available online at: http://www.microb3.eu/sites/default/files/osd/OSD_Handbook_v2.0.pdf
- 2727 Thomsen, P. F., Kielgast, J., Iversen, L. L., Møller, P. R., Rasmussen, M.,
2728 and Willerslev, E. (2012). Detection of a diverse marine fish fauna using
2729 environmental DNA from seawater samples. *PLoS ONE* 7:e41732. doi:
2730 10.1371/journal.pone.0041732
- 2731 Throndsen, J. (1997). “The planktonic marine flagellates,” in *Identifying Marine*
2732 *Phytoplankton*, ed C. R. Tomas (San Diego, CA: Academic Press), 591–729. doi:
2733 10.1016/b978-012693018-4/50007-0
- 2734 Tonge, D. P., Pashley, C. H., and Gant, T. W. (2014). Amplicon-based
2735 metagenomic analysis of mixed fungal samples using proton release amplicon
2736 sequencing. *PLoS ONE* 9:e93849. doi: 10.1371/journal.pone.0093849
- 2737 Trenkel, V., Ressler, P. H., Jech, M., Giannoulaki, M., and Taylor, C. (2011).
2738 Underwater acoustics for ecosystem-based management: state of the science
2739 and proposals for ecosystem indicators. *Mar. Ecol.* 44, 285–301. doi:
2740 10.3354/meps09425
- 2741 Turner, W., Spector, S., Gardiner, N., Fladeland, M., Sterling, E., and Steinger, M.
2742 (2003). Remote sensing for biodiversity science and conservation. *Trends Ecol.*
2743 *Evol.* 18, 306–314. doi: 10.1016/S0169-5347(03)00070-3
- 2744 Underwood, A. J., and Chapman, M. G. (2006). Early development of subtidal
2745 macrofaunal assemblages: relationships to period and timing of colonization.
2746 *J. Exp. Mar. Biol. Ecol.* 330, 221–233. doi: 10.1016/j.jembe.2005.12.029
- 2747 Van Der Wal, D., and Herman, P. M. (2007). Regression-based synergy of
2748 optical, shortwave infrared and microwave remote sensing for monitoring the
2749 grain-size of intertidal sediments. *Remote Sens. Environ.* 111, 89–106. doi:
2750 10.1016/j.rse.2007.03.019
- 2751 Van der Wal, D., Herman, P. M. J., Forster, R., Ysebaert, T., Rossi, F., Knaeps, E.,
2752 et al. (2008). Distribution and dynamics of intertidal macrobenthos predicted
2753 from remote sensing: response to microphytobenthos and environment. *Mar.*
2754 *Ecol. Prog. Ser.* 367, 57–72. doi: 10.3354/meps07535

- 2737 Van Opzeeland, I., and Slabbekoorn, H. (2012). "Importance of underwater sounds
2738 for migration of fish and aquatic mammals," in *Effects of Noise on Aquatic Life*,
2739 eds A.N. Popper and A. Hawkins (New York, NY: Springer Science + Business
2740 Media, LLC), 357–359. doi: 10.1007/978-1-4419-7311-5_80
- 2741 Vantrepotte, V., and Mélin, M., F. (2010). Temporal variability in SeaWiFS
2742 derived apparent optical properties in European seas. *Continental Shelf Res.* 30,
2743 319–334. doi: 10.1016/j.csr.2009.11.012
- 2744 Viard, F., David, P., and Darling, J., (2016). Marine invasions enter the genomic
2745 era: three lessons from the past and the way forward. *Curr. Zool.* 1–14. doi:
2746 10.1093/cz/zow053
- 2747 Visco, J. A., Apothéoz-Perret-Gentil, L., Cordonier, A., Esling, P., Pillet, L., and
2748 Pawlowski, J. (2015). Environmental monitoring: inferring the diatom index
2749 from next-generation sequencing data. *Environ. Sci. Technol.* 49, 7597–7605.
2750 doi: 10.1021/es506158m
- 2751 Vuillemin, R., LeRoux, D., Dorval, P., Bucas, K., Sudreau, J. P., Hamon, M., et al.
2752 (2009). CHEMINI: a new *in situ* CHEMical MINIaturized analyzer. *Deep Sea
2753 Res. I Oceanogr. Res.* 56, 1391–1399. doi: 10.1016/j.dsr.2009.02.002
- 2754 Walz, U., and Syrbe, R. U. (2013). Linking landscape structure and biodiversity.
2755 *Ecol. Indic.* 31, 1–5. doi: 10.1016/j.ecolind.2013.01.032
- 2756 Wilson, J., Low, B., Costanza, R., and Ostrom, E. (1999). Scale misperceptions and
2757 the spatial dynamics of a social–ecological system. *Ecol. Econ.* 31, 243–257. doi:
2758 10.1016/S0921-8009(99)00082-8
- 2759 Worm, B., Barbier, E. B., Beaumont, N., Duffy, J. E., Folke, C., Halpern, B. S., et al.
2760 (2006). Impacts of biodiversity loss on ocean ecosystem services. *Science* 314,
2761 787–790. doi: 10.1126/science.1132294
- 2762 Zaiko, A., Martinez, J. L., Schmidt-Petersen, J., Ribicic, D., Samuiloviene, A.,
2763 and Garcia-Vazquez, E. (2015a). Metabarcoding approach for the ballast water
2764 surveillance - An advantageous solution or an awkward challenge? *Mar. Pollut.
2765 Bull.* 92, 25–34. doi: 10.1016/j.marpollbul.2015.01.008
- 2766 Zaiko, A., Samuiloviene, A., Ardura, A., and Garcia-Vazquez, E. (2015b).
2767 Metabarcoding approach for nonindigenous species surveillance in marine
2768 coastal waters. *Mar. Pollut. Bull.* 100, 53–59. doi: 10.1016/j.marpollbul.2015.
2769 09.030
- 2770
2771
2772
2773
2774
2775
2776
2777
2778
2779
2780
2781
2782
2783
2784
2785
2786
2787
2788
2789
2790
2791
2792
2793
- Zeidberg, L. D., and Robison, B. H. (2007). Invasive range expansion
by the Humboldt squid, *Dosidicus gigas*, in the eastern North Pacific.
Proc. Natl Acad. Sci. U.S.A. 104, 12946–12948. doi: 10.1073/pnas.0702
043104
- Zeppilli, D., Pusceddu, A., Trincardi, F., and Danovaro, R. (2016). Seafloor
heterogeneity influences the biodiversity–ecosystem functioning relationships
in the deep sea. *Sci. Rep.* 6:26352. doi: 10.1038/srep26352
- Zhou, X., Li, Y., Liu, S., Yang, Q., Su, X., Zhou, L., et al. (2013). Ultra-deep
sequencing enables high-fidelity recovery of biodiversity for bulk arthropod
samples without PCR amplification. *Gigascience* 2:4. doi: 10.1186/2047-
217X-2-4
- Zibordi, G., Mélin, F., Berthon, J.-F., and Canuti, E. (2013). Assessment of MERIS
ocean color data products for European seas. *Ocean Sci. Discuss.* 10, 219–259.
doi: 10.5194/osd-10-219-2013
- Conflict of Interest Statement:** The authors declare that the research was
conducted in the absence of any commercial or financial relationships that could
be construed as a potential conflict of interest.
- The handling Editor declared a collaboration with all the authors and states
that the process nevertheless met the standards of a fair and objective review.
- Copyright © 2016 Danovaro, Carugati, Berzano, Cahill, Carvalho, Chenuil,
Corinaldesi, Cristina, David, Dell'Anno, Dzhebekova, Garcés, Gasol, Goela,
Féral, Ferrera, Forster, Kurekin, Rastelli, Marinova, Miller, Moncheva, Newton,
Pearman, Pitois, Reñé, Rodríguez-Ezpeleta, Saggiomo, Simis, Stefanova, Wilson,
Lo Martire, Greco, Cochran, Mangoni and Borja. This is an open-access article
distributed under the terms of the Creative Commons Attribution License (CC
BY). The use, distribution or reproduction in other forums is permitted, provided
the original author(s) or licensor are credited and that the original publication
in this journal is cited, in accordance with accepted academic practice. No
use, distribution or reproduction is permitted which does not comply with these
terms.