



**HAL**  
open science

## Origin, composition and quality of suspended particulate organic matter in relation to freshwater inflow in a South Texas estuary

Benoit Lebreton, Jennifer A Pollack, Brittany A Blomberg, Terence A Palmer, Leslie A Adams, Gaël Guillou, Paul A Montagna

### ► To cite this version:

Benoit Lebreton, Jennifer A Pollack, Brittany A Blomberg, Terence A Palmer, Leslie A Adams, et al.. Origin, composition and quality of suspended particulate organic matter in relation to freshwater inflow in a South Texas estuary. *Estuarine, Coastal and Shelf Science*, 2016, 170, pp.70 - 82. 10.1016/j.ecss.2015.12.024 . hal-01447364

**HAL Id: hal-01447364**

**<https://hal.science/hal-01447364>**

Submitted on 26 Jan 2017

**HAL** is a multi-disciplinary open access archive for the deposit and dissemination of scientific research documents, whether they are published or not. The documents may come from teaching and research institutions in France or abroad, or from public or private research centers.

L'archive ouverte pluridisciplinaire **HAL**, est destinée au dépôt et à la diffusion de documents scientifiques de niveau recherche, publiés ou non, émanant des établissements d'enseignement et de recherche français ou étrangers, des laboratoires publics ou privés.

1  
2  
3  
4  
5  
6  
7  
8  
9  
10  
11  
12  
13  
14  
15  
16  
17  
18  
19  
20  
21  
22  
23  
24  
25  
26  
27  
28  
29  
30  
31  
32  
33  
34  
35  
36  
37  
38  
39  
40  
41  
42  
43  
44  
45  
46  
47  
48  
49  
50  
51  
52  
53  
54  
55  
56  
57  
58  
59  
60  
61  
62  
63  
64  
65

**Origin, composition and quality of suspended particulate organic matter in relation to  
freshwater inflow in a South Texas estuary**

Benoit Lebreton<sup>a, b\*</sup>; Jennifer Beseres Pollack<sup>c</sup>; Brittany Blomberg<sup>a</sup>; Terence A. Palmer<sup>a, c</sup>; Leslie Adams<sup>a</sup>; Gaël Guillou<sup>b</sup>; Paul A. Montagna<sup>a</sup>

<sup>a</sup> Harte Research Institute for Gulf of Mexico Studies, Texas A&M University – Corpus Christi, 6300 Ocean Drive, Unit 5869, Corpus Christi, TX 78412-5869, USA.

<sup>b</sup> UMR Littoral, Environment et Societies, CNRS - University of La Rochelle, Institut du Littoral et de l'environnement, 2 rue Olympe de Gouges, 17000 La Rochelle, France.

<sup>c</sup> Department of Life Sciences, Texas A&M University – Corpus Christi, 6300 Ocean Drive, Unit 5800, Corpus Christi, TX 78412-5800, USA.

\* Corresponding author. E-mail address: benoit.lebreton@univ-lr.fr, Tel: + 33 (0)5 16 49 67 31, Fax: +33 (0)5 46 50 76 63

E-mail addresses: Jennifer Beseres Pollack: [jennifer.pollack@tamucc.edu](mailto:jennifer.pollack@tamucc.edu); Brittany Blomberg: [brittany.blomberg@tamucc.edu](mailto:brittany.blomberg@tamucc.edu); Terence A. Palmer: [terry.palmer@tamucc.edu](mailto:terry.palmer@tamucc.edu); Leslie Adams: [leslie.adams@tamucc.edu](mailto:leslie.adams@tamucc.edu); Gaël Guillou: [gguill01@univ-lr.fr](mailto:gguill01@univ-lr.fr); Paul A. Montagna: [Paul.Montagna@tamucc.edu](mailto:Paul.Montagna@tamucc.edu)

**Abstract**

---

SPOM: suspended particulate organic matter; Chl *a*: chlorophyll a; GoM: Gulf of Mexico; POC: Particulate organic matter.

1 South Texas has a semi-arid climate with a large interannual variability of freshwater inflows. This  
2 study sought to define how changes in freshwater inflow affect the composition, quantity and  
3 quality of suspended particulate organic matter (SPOM) in a South Texas estuary: the Mission-  
4 Aransas estuary. The study was implemented 1.5 months after a large rain event in September 2010  
5 and continued for 10 months of drought conditions. The composition of SPOM originating from  
6 rivers, the Gulf of Mexico and the estuary were determined using stable isotopes ( $\delta^{13}\text{C}$ ,  $\delta^{15}\text{N}$  and  
7  $\delta^{34}\text{S}$ ). The quantity and quality of SPOM were assessed using organic carbon content, chlorophyll *a*  
8 concentrations and C/chl *a* ratios. Our results demonstrated that autochthonous phytoplankton was  
9 the dominant component of SPOM in the Mission-Aransas estuary during droughts. Benthic organic  
10 matter from local primary producers (i.e., seagrass, salt marsh plants, benthic microalgae) did not  
11 influence SPOM composition, either as fresh material or as detritus. A comparison with a positive  
12 estuary (i.e., Sabine-Neches estuary, TX) indicates that decreases in freshwater inflow may lead to  
13 decreases of terrestrial organic matter inputs and to increase the ratio of autochthonous  
14 phytoplanktonic material in SPOM.  
15  
16  
17  
18  
19  
20  
21  
22  
23  
24  
25  
26  
27  
28  
29  
30  
31

## 32 33 34 35 **Highlights**

- 36 - Phytoplankton dominate particulate organic matter in the Mission-Aransas estuary.
- 37
- 38 - Benthic organic matter does not influence particulate organic matter composition.
- 39
- 40 - Organic matter drained by rivers during minor rain events is of very poor quality.
- 41  
42  
43  
44  
45  
46

## 47 **Keywords**

48 Suspended particulate organic matter; Freshwater inflow; Stable isotope ratio; Chlorophyll *a*; Gulf of  
49 Mexico; Texas estuary  
50  
51  
52  
53

## 54 55 56 57 **1. Introduction**

58  
59  
60  
61  
62  
63  
64  
65

1  
2  
3  
4  
5  
6  
7  
8  
9  
10  
11  
12  
13  
14  
15  
16  
17  
18  
19  
20  
21  
22  
23  
24  
25  
26  
27  
28  
29  
30  
31  
32  
33  
34  
35  
36  
37  
38  
39  
40  
41  
42  
43  
44  
45  
46  
47  
48  
49  
50  
51  
52  
53  
54  
55  
56  
57  
58  
59  
60  
61  
62  
63  
64  
65

Estuaries are among the most productive ecosystems on Earth, with production equal to that of tropical rain forests (McLusky, 1989). The quantity and timing of freshwater delivery to the mixing zone is essential to their functioning (Montagna et al., 2002). Freshwater inflows play key roles in carrying continental organic matter from the watershed to the estuary (Hedges et al., 1997), and in balancing effects of tidal inputs of saltwater and of evaporation, consequently affecting the structure of habitats. As a result, freshwater inflows affect inputs of continental and marine organic matter and autochthonous pelagic and benthic primary production (Longley, 1995). Increasing human populations will result in an increasing demand for freshwater, which will affect freshwater inflow into estuaries and have consequences on the functioning of estuarine ecosystems (Montagna et al., 2002).

One consequence is the potential change of composition of suspended particulate organic matter (SPOM), an integral component of estuarine food webs (Longley, 1994). Organic matter locally produced in estuaries or provided by rivers or the sea varies in terms of quantity and quality depending on its origin and its state of decay (Dunton et al., 2001; Raymond and Bauer, 2001). This diversity of primary productions can be used by many different consumers, making highly complex estuarine food webs. Consequently, estuaries provide many ecological functions, including breeding grounds, nurseries and feeding sites for a large diversity of pelagic and benthic species (Beck et al., 2001). For example, SPOM is generally the main food source of suspension feeders like oysters. As a result, a change of abundance or composition of SPOM may severely affect the oyster diet (Riera and Richard, 1997), and therefore the general functioning of oyster reefs, which provide many ecological functions (Beck et al., 2011; Grabowski et al., 2012).

The origins, quantity, and quality of SPOM can be determined by measuring several variables, including stable isotope ratios, chlorophyll *a* (chl *a*) content and C/chl *a* ratios. Stable isotope ratios of carbon and of sulfur provide information about the origin of organic matter. Stable isotopes of carbon allow for discrimination between the different estuarine primary producers (Fry and Sherr, 1984; Peterson and Fry, 1987) and are often used to determine composition of SPOM in estuaries

(Cifuentes et al., 1988; Riera and Richard, 1997; Savoye et al., 2003; 2012; Modéran et al., 2012).

Due to potential overlaps of carbon stable isotope composition between different primary producers and the effects of decay processes on isotopic composition (Benner et al., 1987), stable isotopes of sulfur can be used to discriminate between the different food sources. Primary producers from continental areas are generally much more  $^{34}\text{S}$ -depleted than primary producers from oceanic environments (Peterson et al., 1985; Peterson and Howarth, 1987; Thode, 1991). Stable isotope composition of nitrogen is generally used to determine the trophic levels of consumers (Minagawa and Wada, 1984; Vander Zanden and Rasmussen, 1999), but can also be an indicator of anthropogenic influence (i.e., release of wastewater from treatment plants) due to increase of  $\delta^{15}\text{N}$  values with bacterial activity (McClelland and Valiela, 1998; Mooney and McClelland, 2012). The measurement of these three stable isotopes enables discrimination between the different pools of organic matter in order to determine its origin. The measurement of total organic carbon, chl *a* and C/chl *a* ratios along with these stable isotope ratios help determine the quantity and the quality of SPOM along a salinity gradient. The aim of this study was to determine how the different primary producers and inputs of allochthonous organic matter (i.e., from continental and marine origins) affect the composition, quantity and quality of SPOM, and to determine the evolution of these parameters in relation to changes in freshwater inflows. This study was conducted in the Mission-Aransas estuary, Texas, a semi-arid estuary that is vulnerable to changes in natural and anthropogenic changes in freshwater inflow.

## **2. Material and methods**

### **2.1 Study area**

The Mission-Aransas estuary is one of seven major estuarine systems located along the Texas coast (Fig. 1). It is a shallow, bar-built estuary composed of Aransas bay, the primary bay located closest to the Gulf of Mexico inlet, and Copano Bay, the secondary bay located closest to the two main rivers: the Mission and Aransas rivers. The Mission-Aransas estuary is 2 m deep on average, its

1 surface is 463 km<sup>2</sup> and its volume is 0.93 km<sup>3</sup> (Armstrong, 1987). The Copano bay watershed is 4851  
2 km<sup>2</sup> (Borel et al., 2015); 49% of the freshwater comes from the Mission river and 15% from the  
3 Aransas river (Orlando et al., 1993).  
4  
5

6  
7 The Mission-Aransas estuary is located in a sub-tropical humid climate. Rainfalls generally occur  
8 as brief and intense rain showers and as a result, freshwater inflows occur as episodic pulses.  
9  
10 Rainfall, and consequently freshwater inflows, varies from year to year with alternating dry and wet  
11 periods (Evans and Morehead Palmer, 2012). From 2001-2010, freshwater inflows from both rivers  
12 ranged from 17 to 430 million m<sup>3</sup> y<sup>-1</sup> (U.S. Geological Survey, 2012). On an annual basis, Mission-  
13 Aransas estuary is losing water due to higher evaporation (1513 mm y<sup>-1</sup>) than precipitation (886 mm  
14 y<sup>-1</sup>) (Armstrong, 1987). The estuary has low mixing efficiency (< 0.05) and long residence times (~360  
15 days, Solis and Powell, 1999). The salinity structure is driven by episodic freshwater pulses that  
16 depress salinities and then maintain low salinities for a prolonged period (Orlando et al., 1993).  
17  
18  
19  
20  
21  
22  
23  
24  
25  
26

27  
28 The Mission-Aransas estuary hosts diverse primary producers and is fueled by different  
29 allochthonous sources i.e., continental organic matter from Mission and Aransas rivers in Copano bay,  
30 pelagic organic matter from the Gulf of Mexico in Aransas bay, organic matter from San Antonio bay  
31 transported southward across the Mesquite bay via the Intracoastal Waterway (Solis and Powell,  
32 1999).  
33  
34  
35  
36  
37  
38  
39  
40  
41

## 42 **2.2 Sampling stations**

43  
44 Five stations were sampled along a salinity gradient in the Mission-Aransas estuary, with station 1  
45 (St. 1) the closest to the Aransas river mouth and station 5 (St. 5) the closest to the Gulf of Mexico  
46 (Fig. 1). Three other stations were sampled to collect freshwater from the two main rivers (Mission  
47 river (MIS) and Aransas river (ARA), and sea water from the Gulf of Mexico (GoM). Freshwater inputs  
48 into Copano bay were determined by summing flows of Mission and Aransas rivers using data from  
49 USGS gauge stations (Fig. 1) located at Refugio (Mission river, Site ID: 08189500) and Skidmore  
50 (Aransas river, Site ID: 08189700) (U.S. Geological Survey, 2012).  
51  
52  
53  
54  
55  
56  
57  
58  
59  
60  
61  
62  
63  
64  
65

### 2.3 Collection of water samples and sample processing

At each station, three samples of surface water were collected on a monthly basis, from November 2010 (relatively high freshwater inflow) to August 2011 (relatively low freshwater inflow). All water samples were collected far enough from the shore to be representative of the river or bay water mass. Due to restricted access, it was impossible to sample water at the mouth of the Mission river.

Salinity was measured with an YSI 6920 multiprobe sonde, using practical salinity scale. Water samples were pre-filtered on a 250- $\mu\text{m}$  sieve to eliminate large zooplankton and detritus. For each water sample, SPOM was collected on four different filters (precombusted Whatman GF/F glass fiber filters, 0.7  $\mu\text{m}$  porosity) in order to measure stable isotope composition ( $\delta^{13}\text{C}$ ,  $\delta^{15}\text{N}$ ,  $\delta^{34}\text{S}$ ) and chl *a* concentration. A volume ranging from 5 to 325 ml was filtered under moderate vacuum; filters were then frozen at  $-20^{\circ}\text{C}$  and freeze-dried. Carbonates were removed from filters for  $\delta^{13}\text{C}$  and %C analyses by contact with HCl fumes in a vacuum-enclosed system.

### 2.4 Collection of primary producers for stable isotope analyses

To determine the composition of SPOM, the main primary producers ( $\text{C}_3$  and  $\text{C}_4$  salt marsh plants, seagrass, benthic microalgae) were sampled at different locations along the salinity gradient and during different seasons to examine possible spatio-temporal changes in isotopic composition. Vascular plants (leaves) and seagrass (leaves and roots) were collected, placed in plastic bags and stored in ice until return at the lab. They were then rinsed with tap water to remove detritus and sediment, frozen at  $-20^{\circ}\text{C}$ , freeze-dried and ground to a fine and homogeneous powder using a ball mill.

Benthic microalgae were collected by scraping surface sediments in the field and then by extracting the microalgae in the laboratory following the method of Riera and Richard (1996), slightly modified by Herlory et al. (2007). Extracted samples were checked under a microscope for

1  
2  
3  
4  
5  
6  
7  
8  
9  
10  
11  
12  
13  
14  
15  
16  
17  
18  
19  
20  
21  
22  
23  
24  
25  
26  
27  
28  
29  
30  
31  
32  
33  
34  
35  
36  
37  
38  
39  
40  
41  
42  
43  
44  
45  
46  
47  
48  
49  
50  
51  
52  
53  
54  
55  
56  
57  
58  
59  
60  
61  
62  
63  
64  
65

purity, then benthic microalgae were collected on three different filters (precombusted Whatman GF/F glass fiber filters) in order to measure stable isotope composition ( $\delta^{13}\text{C}$ ,  $\delta^{15}\text{N}$ ,  $\delta^{34}\text{S}$ ). Samples were frozen at  $-20^{\circ}\text{C}$  then freeze-dried.

## 2.5 Chl *a* and stable isotope ratio measurements

Chl *a* was extracted overnight from filters and read on a Turner Trilogy fluorometer (Turner Designs, Sunnyvale, USA) using a non-acidification technique (Welschmeyer, 1994). Detection limit of the fluorometer was  $0.025 \mu\text{g}\cdot\text{L}^{-1}$  with a linear range of  $0\text{-}300 \mu\text{g}\cdot\text{L}^{-1}$ . Calibration was performed once a year using commercially available fluorometric chlorophyll calibration standards for chlorophyll *a* (Turner Designs).

Samples for stable isotope analyses and particulate organic carbon percentages were analyzed using an elemental analyzer (Flash EA 1112, Thermo Scientific, Milan, Italy) coupled with an isotope ratio mass spectrometer (Delta V Advantage with a ConFlo IV interface, Thermo Scientific, Bremen, Germany) at the LIENSs stable isotope facility of the University of La Rochelle, France. Results are expressed in the  $\delta$  notation as deviations from standards (Vienna Pee Dee Belemnite for  $\delta^{13}\text{C}$ ,  $\text{N}_2$  in air for  $\delta^{15}\text{N}$  and Canyon Diablo Troilite for  $\delta^{34}\text{S}$ ) following the formula:  $\delta^{13}\text{C}$ ,  $\delta^{15}\text{N}$  or  $\delta^{34}\text{S} = [(R_{\text{sample}}/R_{\text{standard}}) - 1] \times 10^3$ , where R is  $^{13}\text{C}/^{12}\text{C}$ ,  $^{15}\text{N}/^{14}\text{N}$  or  $^{34}\text{S}/^{32}\text{S}$ , respectively. Calibration was done using reference materials (USGS-24, IAEA-CH6, -600 for carbon; IAEA-N2, -NO-3, -600 for nitrogen; IAEA-S-1, -S-2 for sulfur). Analytical precision based on the analyses of acetanilide (Thermo Scientific) used as laboratory internal standard was  $<0.06$  and  $<0.1\text{‰}$  for carbon and nitrogen, respectively. Analytical precision based on the analyses of sulfanilamide (Thermo Scientific) used as laboratory internal standard was  $<0.15\text{‰}$ . Vanadium pentoxide was added in each SPOM sample as a catalyzer during sample combustion for sulfur elemental analysis.

## 2.6 Data analyses and statistics



1 Mean daily freshwater discharges were determined from September 1<sup>st</sup>, 2010 to September, 30<sup>th</sup>  
2 2011, using data from USGS gauge stations. Loads of POC into the Copano bay from the Aransas and  
3 the Mission rivers were computed by multiplying the mean daily freshwater discharge with the  
4 concentrations of POC ( $\mu\text{g}\cdot\text{ml}^{-1}$ ). C/chl *a* ratios were computed using concentrations of particulate  
5 organic carbon ( $\mu\text{g l}^{-1}$ ) from elemental analyses and of chlorophyll *a* from fluorimetry measurements  
6 ( $\mu\text{g l}^{-1}$ ). Comparisons between stable isotope values of primary producers and SPOM samples were  
7 conducted using nonparametric procedures (i.e., Kruskal-Wallis rank sum test and Wilcoxon signed  
8 rank test), to determine any differences between locations, sampling dates and tissues (roots and  
9 leaves). Kruskal–Wallis tests were followed by multiple comparisons of means using the pgirmess  
10 package (Giraudoux, 2011) in R statistical software (R Development Core Team, 2010).  
11  
12  
13  
14  
15  
16  
17  
18  
19  
20  
21  
22  
23  
24  
25

### 26 **3. Results and discussion**

#### 27 **3.1 River discharges and hydrological features of the Mission-Aransas estuary in 2010-2011**

28 The year 2011 was a very dry year—the second driest (after 2008) of the past 10 years (Mooney  
29 and McClelland, 2012). Inputs of freshwater from the Aransas and Mission rivers to Copano bay  
30 were very low, with 21 million  $\text{m}^3$ , compared to an average of 170 million  $\text{m}^3 \text{y}^{-1}$  over the past 10  
31 years (U.S. Geological Survey, 2012). Freshwater inflows in the Mission-Aransas estuary decreased  
32 by more than 2 orders of magnitude from September 2010 ( $2.30 \cdot 10^6 \text{ m}^3 \text{ d}^{-1}$ ) to September 2011  
33 ( $8.05 \cdot 10^3 \text{ m}^3 \text{ d}^{-1}$ ). A large pulse of freshwater occurred in September 2010—before the start of the  
34 experiment— with the highest input of  $1.92 \cdot 10^7 \text{ m}^3 \text{ d}^{-1}$  on September 20<sup>th</sup>, leading to a strong salinity  
35 gradient in the estuary (Fig. 2 ; Mooney and McClelland, 2012; Bruesewitz et al., 2013). A minor  
36 pulse occurred in January 2011, with the highest input of  $5.15 \cdot 10^6 \text{ m}^3 \text{ d}^{-1}$  on January 17<sup>th</sup>, 2011.  
37 During the January pulse (January 17<sup>th</sup> and 18<sup>th</sup>, 2011), 96 and 4 % of the freshwater inflow were  
38 issued from Mission and Aransas rivers, respectively.  
39  
40  
41  
42  
43  
44  
45  
46  
47  
48  
49  
50  
51  
52  
53  
54  
55

56 Salinity increased along a gradient from Aransas river mouth (Station 1) to the Gulf of Mexico  
57 (GoM) (Fig. 2). This gradient was more evenly distributed along the length of the sampling transect  
58  
59  
60  
61  
62  
63  
64  
65

1  
2  
3  
4  
5  
6  
7  
8  
9  
10  
11  
12  
13  
14  
15  
16  
17  
18  
19  
20  
21  
22  
23  
24  
25  
26  
27  
28  
29  
30  
31  
32  
33  
34  
35  
36  
37  
38  
39  
40  
41  
42  
43  
44  
45  
46  
47  
48  
49  
50  
51  
52  
53  
54  
55  
56  
57  
58  
59  
60  
61  
62  
63  
64  
65

in November 2010 (salinity from 5.2 to 24.3) than in August 2011 (salinity from 30.5 to 37.3) due to the overall increase of salinities in Copano and Aransas bays. The salinities of the river station ARA were close to zero throughout the study period although the salinities at the MIS river station rose to 5 by August 2011. Salinities measured at Station 5 and GoM were similar throughout the sampling period.

On average, evaporation largely exceeds precipitation in the Mission-Aransas estuary and south east winds generally predominates (Armstrong, 1987), which leads to a flow of water from Aransas bay into Copano bay, this flow being twice more than the volume of the freshwater issued from rivers (Johnson, 2009). Minor rain events in the Mission-Aransas watershed, like the one observed in January 2011, do not have any effect on the general hydrology of the bay, as evidenced by the general increase of salinity in the bay throughout the study period (Bruesewitz et al., 2013). Nevertheless, a slight decrease in salinity was observed at Station 4 in January 2011, indicating a potential flow of freshwater originating from San Antonio bay, which is connected to Aransas bay via the Intracoastal Waterway in Mesquite bay (Solis and Powell, 1999). As a result, from November 2010 to August 2011, a combination of low freshwater inflow, high evaporation and flow of saline water from Aransas bay into Copano bay led to a general increase in salinity throughout the estuary and compression of the salinity gradient, which was observed in November 2010. Thus, from November 2010 to August 2011, the Mission-Aransas estuary went from a system dominated by precipitation (i.e., positive estuary) to a system dominated by evaporation (i.e., negative estuary) (Pritchard, 1952; Montagna et al., 2013).

During the study period, particulate organic carbon (POC) concentrations ranged from 0.48 (December 10) to 2.8  $\mu\text{g ml}^{-1}$  (August 11) in Aransas river and from 0.53 (March 11) to 2.12  $\mu\text{g ml}^{-1}$  (August 11) in Mission river. POC concentration data in Mission river in November and December are missing due to technical issues. Except in January, computed load of POC into the Mission-Aransas estuary ranged from 334 to 939  $\text{kg month}^{-1}$  and from 15 to 1241  $\text{kg month}^{-1}$  for Aransas and Mission rivers, respectively. In January, POC load into the Mission-Aransas estuary was much higher,

1 particularly for Mission river (13097 kg month<sup>-1</sup>) while Aransas river POC load was 3292 kg month<sup>-1</sup>  
2 (Fig. 2).  
3  
4  
5  
6

### 7 **3.2 Discrimination of the different benthic primary producers using stable isotopes**

8  
9 Salt marsh plants had typical isotopic compositions for carbon as C<sub>3</sub> and C<sub>4</sub> plants were relatively  
10 <sup>13</sup>C-depleted (-29.2 to -26.8‰) and <sup>13</sup>C-enriched (-15.5 to -12.5 ‰), respectively (Table 1, Fig. 3). This  
11 disparity is mostly related to different enzymatic processes occurring during photosynthesis and  
12 differential utilization of HCO<sub>3</sub> and CO<sub>2</sub> (Smith and Epstein, 1971; Fry and Sherr, 1984; O'Leary et al.,  
13 1992). Seagrass material was the most <sup>13</sup>C-enriched, with δ<sup>13</sup>C values ranging from -14.7 to -10.7‰,  
14 typical for seagrasses (Hemminga and Mateo, 1996) and slightly higher than C<sub>4</sub> vascular plants (Table  
15 1, Fig. 3). Detrital matter from seagrass had a very low δ<sup>13</sup>C value at station 3 (-18.1‰) whereas δ<sup>13</sup>C  
16 value at station 4 (-11.9‰) was in the range of fresh material. This large difference is probably  
17 related with the degradation process which leads to higher levels of lignin in detrital matter, which is  
18 <sup>13</sup>C-depleted (Benner et al., 1987). As a result, degradation of seagrass may lead to a larger overlap  
19 between δ<sup>13</sup>C values of seagrass detritus and those of C<sub>4</sub> salt marsh plants, either as fresh or as  
20 detritus. Benthic microalgae had a wide range of δ<sup>13</sup>C values, ranging from -21.7 to -12.0‰, largely  
21 overlapping the ranges of values observed for seagrass and C<sub>4</sub> vascular plants.  
22  
23  
24  
25  
26  
27  
28  
29  
30  
31  
32  
33  
34  
35  
36  
37  
38  
39

40 No pattern was observed for δ<sup>13</sup>C values of C<sub>3</sub> and C<sub>4</sub> plants between species, sampling dates and  
41 locations in the bay. Leaves and roots of seagrass were more <sup>13</sup>C-enriched in downstream sections  
42 than in upstream sections of the Mission-Aransas estuary (Table 1, Kruskal-Wallis rank sum test, p-  
43 values: *Ruppia maritima*: leaves: 0.013, roots: 0.016, *Halodule wrightii*: leaves: 0.001, roots: 0.004).  
44 A similar pattern was observed for microphytobenthos (Kruskal-Wallis rank sum test, p-value: 0.035)  
45 and was clearly related to salinity: microphytobenthos had lower δ<sup>13</sup>C values (from -21.7 to -16.4‰)  
46 at low salinities (Stations 1 and 3 in November, station 1 in March) than at high salinities (Fig. 4). This  
47 is probably due to the higher influence of dissolved inorganic carbonates from freshwater, which are  
48 <sup>13</sup>C-depleted (Fry and Sherr, 1984). It is thus possible to discriminate these benthic algae from the  
49  
50  
51  
52  
53  
54  
55  
56  
57  
58  
59  
60  
61  
62  
63  
64  
65

1 other primary producers. The  $\delta^{13}\text{C}$  values of benthic algae collected in marine influenced  
2 environments, ranging from -14.2 to -12.0‰, were in the range of those from the literature (Currin  
3 et al., 1995; Riera and Richard, 1996; Riera et al., 1999; Kharlamenko et al., 2008. Lebreton et al.,  
4 2011).  
5  
6  
7

8  
9 Seagrass,  $\text{C}_3$  and  $\text{C}_4$  vascular plants had a large range of  $\delta^{15}\text{N}$  values, ranging from 2.0 to 9.2‰,  
10 from 4.5 to 10.0‰ and from -1.1 to 7.7‰, respectively. Very different  $\delta^{15}\text{N}$  values were observed  
11 between the two samples of seagrass detrital matter, with values of 7.5‰ at station 3 and 1.8‰ at  
12 station 4 in November 2010. *Halodule wrightii* and *Spartina alterniflora* clearly had higher  $\delta^{15}\text{N}$   
13 values in upstream parts of the estuary than in downstream parts (Table 1, Wilcoxon signed rank  
14 test, p-values: *Halodule wrightii*: leaves: 0.003, roots: 0.004, *Spartina alterniflora*: <0.001).  $\delta^{15}\text{N}$   
15 values of microphytobenthos ranged from -0.6 to 5.3‰, with slightly higher  $\delta^{15}\text{N}$  values at lower  
16 salinities.  
17  
18  
19  
20  
21  
22  
23  
24  
25  
26

27  
28 Sulfur stable isotope composition of primary producers was highly variable, even at the species  
29 level (e.g., *Spartina alterniflora*, *Borrchia frutescens*, *Ruppia maritima*) (Table 1, Fig. 3). Among  
30 primary producers,  $\text{C}_3$  vascular plants were the most enriched in  $^{34}\text{S}$ , with  $\delta^{34}\text{S}$  values ranging from  
31 7.1 to 18.4‰.  $\text{C}_4$  vascular plants were less enriched in  $^{34}\text{S}$ , with values ranging from -5.8 to 7.1‰.  
32  
33 However, these values were higher than those previously observed during other studies (Peterson et  
34 al., 1986; Peterson and Howarth, 1987; Sullivan and Moncreiff, 1990; Currin et al., 1995). This large  
35 range of  $\delta^{34}\text{S}$  values is linked with differential assimilation of sediment sulfides, which are  $^{34}\text{S}$ -  
36 depleted, and of sulfates, which are  $^{34}\text{S}$ -enriched, depending on seasonal and spatial conditions  
37 (Carlson and Forrest, 1982; Fry et al., 1982; Currin et al., 1995; Stribling et al., 1998). The much  
38 higher  $\delta^{34}\text{S}$  values measured on  $\text{C}_3$  plants in comparison with those of  $\text{C}_4$  plants indicate that  $\text{C}_3$   
39 plants assimilate sulfates originating from precipitation (0 to 15‰) and seawater (21‰) (Peterson et  
40 al., 1986; Peterson and Howarth, 1987; Krouse et al., 1991; Connolly et al., 2004). No clear pattern  
41 was observed between  $\delta^{34}\text{S}$  values and salinity, location or sampling time for  $\text{C}_3$  and  $\text{C}_4$  vascular  
42 plants.  
43  
44  
45  
46  
47  
48  
49  
50  
51  
52  
53  
54  
55  
56  
57  
58  
59  
60  
61  
62  
63  
64  
65

1 Microphytobenthos had intermediate  $\delta^{34}\text{S}$  values, going from 4.1 to 11.8‰, in the range of those  
2 reviewed by Currin et al. (1995). No relation was observed between  $\delta^{34}\text{S}$  values of  
3 microphytobenthos and salinities, in contrast to the pattern observed in carbon isotopic  
4 composition, as these samples were collected at salinities (>5.2) for which isotopic composition of  
5 sulfates is already relatively high. In the Mississippi river estuary, Fry and Chumcall (2011)  
6 highlighted that the stable isotope composition of sulfates mostly varies at very low salinities (<0.6)  
7 and then remains relatively stable (21‰), close to the isotopic composition of sulfates in seawater  
8 (Nriagu et al., 1991).  
9

10  
11  
12  
13  
14  
15  
16  
17  
18  
19 Seagrass also had a wide range of  $\delta^{34}\text{S}$  values, with roots generally much more  $^{34}\text{S}$ -depleted than  
20 leaves: -11.1 to 7.8 ‰ vs. -1.5 to 6.1‰, respectively. The differences observed between leaves and  
21 roots are probably related with a differential uptake of sulfur by these two tissues. Roots mostly use  
22 sediment sulfur which contains high quantities of sulfides resulting from anaerobic bacterial activity,  
23 and are generally very  $^{34}\text{S}$ -depleted (-10 to -35 ‰), whereas leaves use dissolved sulfates from the  
24 water column (21‰) (Fry et al., 1982; Nriagu et al., 1991; Moncreiff and Sullivan, 2001). As a result,  
25 there is good discrimination between seagrass roots and benthic algae or  $\text{C}_4$  plants thanks to  $\delta^{34}\text{S}$   
26 values. However, the large range of  $\delta^{34}\text{S}$  values observed on seagrass leaves and  $\text{C}_4$  plants do not  
27 allow for discrimination between these two primary producers. The large variations described for  
28  $\delta^{34}\text{S}$  values, depending on species, tissues, locations and seasons (Fry et al., 1982; Moncreiff and  
29 Sullivan, 2001; Oakes and Connolly, 2004; Belicka et al., 2012), signify that information issued from  
30 sulfur stable isotope composition should be used with caution in large scale ecosystem studies  
31 (Connolly et al., 2004).  
32

33  
34  
35  
36  
37  
38  
39  
40  
41  
42  
43  
44  
45  
46  
47  
48  
49  
50  
51  
52  
53  
54  
55  
56  
57  
58  
59  
60  
61  
62  
63  
64  
65  
66  
67  
68  
69  
70  
71  
72  
73  
74  
75  
76  
77  
78  
79  
80  
81  
82  
83  
84  
85  
86  
87  
88  
89  
90  
91  
92  
93  
94  
95  
96  
97  
98  
99  
100  
101  
102  
103  
104  
105  
106  
107  
108  
109  
110  
111  
112  
113  
114  
115  
116  
117  
118  
119  
120  
121  
122  
123  
124  
125  
126  
127  
128  
129  
130  
131  
132  
133  
134  
135  
136  
137  
138  
139  
140  
141  
142  
143  
144  
145  
146  
147  
148  
149  
150  
151  
152  
153  
154  
155  
156  
157  
158  
159  
160  
161  
162  
163  
164  
165  
166  
167  
168  
169  
170  
171  
172  
173  
174  
175  
176  
177  
178  
179  
180  
181  
182  
183  
184  
185  
186  
187  
188  
189  
190  
191  
192  
193  
194  
195  
196  
197  
198  
199  
200  
201  
202  
203  
204  
205  
206  
207  
208  
209  
210  
211  
212  
213  
214  
215  
216  
217  
218  
219  
220  
221  
222  
223  
224  
225  
226  
227  
228  
229  
230  
231  
232  
233  
234  
235  
236  
237  
238  
239  
240  
241  
242  
243  
244  
245  
246  
247  
248  
249  
250  
251  
252  
253  
254  
255  
256  
257  
258  
259  
260  
261  
262  
263  
264  
265  
266  
267  
268  
269  
270  
271  
272  
273  
274  
275  
276  
277  
278  
279  
280  
281  
282  
283  
284  
285  
286  
287  
288  
289  
290  
291  
292  
293  
294  
295  
296  
297  
298  
299  
300  
301  
302  
303  
304  
305  
306  
307  
308  
309  
310  
311  
312  
313  
314  
315  
316  
317  
318  
319  
320  
321  
322  
323  
324  
325  
326  
327  
328  
329  
330  
331  
332  
333  
334  
335  
336  
337  
338  
339  
340  
341  
342  
343  
344  
345  
346  
347  
348  
349  
350  
351  
352  
353  
354  
355  
356  
357  
358  
359  
360  
361  
362  
363  
364  
365  
366  
367  
368  
369  
370  
371  
372  
373  
374  
375  
376  
377  
378  
379  
380  
381  
382  
383  
384  
385  
386  
387  
388  
389  
390  
391  
392  
393  
394  
395  
396  
397  
398  
399  
400  
401  
402  
403  
404  
405  
406  
407  
408  
409  
410  
411  
412  
413  
414  
415  
416  
417  
418  
419  
420  
421  
422  
423  
424  
425  
426  
427  
428  
429  
430  
431  
432  
433  
434  
435  
436  
437  
438  
439  
440  
441  
442  
443  
444  
445  
446  
447  
448  
449  
450  
451  
452  
453  
454  
455  
456  
457  
458  
459  
460  
461  
462  
463  
464  
465  
466  
467  
468  
469  
470  
471  
472  
473  
474  
475  
476  
477  
478  
479  
480  
481  
482  
483  
484  
485  
486  
487  
488  
489  
490  
491  
492  
493  
494  
495  
496  
497  
498  
499  
500  
501  
502  
503  
504  
505  
506  
507  
508  
509  
510  
511  
512  
513  
514  
515  
516  
517  
518  
519  
520  
521  
522  
523  
524  
525  
526  
527  
528  
529  
530  
531  
532  
533  
534  
535  
536  
537  
538  
539  
540  
541  
542  
543  
544  
545  
546  
547  
548  
549  
550  
551  
552  
553  
554  
555  
556  
557  
558  
559  
560  
561  
562  
563  
564  
565  
566  
567  
568  
569  
570  
571  
572  
573  
574  
575  
576  
577  
578  
579  
580  
581  
582  
583  
584  
585  
586  
587  
588  
589  
590  
591  
592  
593  
594  
595  
596  
597  
598  
599  
600  
601  
602  
603  
604  
605  
606  
607  
608  
609  
610  
611  
612  
613  
614  
615  
616  
617  
618  
619  
620  
621  
622  
623  
624  
625  
626  
627  
628  
629  
630  
631  
632  
633  
634  
635  
636  
637  
638  
639  
640  
641  
642  
643  
644  
645  
646  
647  
648  
649  
650  
651  
652  
653  
654  
655  
656  
657  
658  
659  
660  
661  
662  
663  
664  
665  
666  
667  
668  
669  
670  
671  
672  
673  
674  
675  
676  
677  
678  
679  
680  
681  
682  
683  
684  
685  
686  
687  
688  
689  
690  
691  
692  
693  
694  
695  
696  
697  
698  
699  
700  
701  
702  
703  
704  
705  
706  
707  
708  
709  
710  
711  
712  
713  
714  
715  
716  
717  
718  
719  
720  
721  
722  
723  
724  
725  
726  
727  
728  
729  
730  
731  
732  
733  
734  
735  
736  
737  
738  
739  
740  
741  
742  
743  
744  
745  
746  
747  
748  
749  
750  
751  
752  
753  
754  
755  
756  
757  
758  
759  
760  
761  
762  
763  
764  
765  
766  
767  
768  
769  
770  
771  
772  
773  
774  
775  
776  
777  
778  
779  
780  
781  
782  
783  
784  
785  
786  
787  
788  
789  
790  
791  
792  
793  
794  
795  
796  
797  
798  
799  
800  
801  
802  
803  
804  
805  
806  
807  
808  
809  
810  
811  
812  
813  
814  
815  
816  
817  
818  
819  
820  
821  
822  
823  
824  
825  
826  
827  
828  
829  
830  
831  
832  
833  
834  
835  
836  
837  
838  
839  
840  
841  
842  
843  
844  
845  
846  
847  
848  
849  
850  
851  
852  
853  
854  
855  
856  
857  
858  
859  
860  
861  
862  
863  
864  
865  
866  
867  
868  
869  
870  
871  
872  
873  
874  
875  
876  
877  
878  
879  
880  
881  
882  
883  
884  
885  
886  
887  
888  
889  
890  
891  
892  
893  
894  
895  
896  
897  
898  
899  
900  
901  
902  
903  
904  
905  
906  
907  
908  
909  
910  
911  
912  
913  
914  
915  
916  
917  
918  
919  
920  
921  
922  
923  
924  
925  
926  
927  
928  
929  
930  
931  
932  
933  
934  
935  
936  
937  
938  
939  
940  
941  
942  
943  
944  
945  
946  
947  
948  
949  
950  
951  
952  
953  
954  
955  
956  
957  
958  
959  
960  
961  
962  
963  
964  
965  
966  
967  
968  
969  
970  
971  
972  
973  
974  
975  
976  
977  
978  
979  
980  
981  
982  
983  
984  
985  
986  
987  
988  
989  
990  
991  
992  
993  
994  
995  
996  
997  
998  
999  
1000

As a result,  $\text{C}_3$  vascular plants are very well differentiated from all other primary producers and some microphytobenthos samples are clearly separated from seagrass and  $\text{C}_4$  plants.  $\delta^{34}\text{S}$  measurements allow for good discrimination between microphytobenthos and seagrass detritus (Table 1, Fig. 3). The combination of three different stable isotope markers ( $\delta^{13}\text{C}$ ,  $\delta^{15}\text{N}$  and  $\delta^{34}\text{S}$ ) thus allowed the discrimination of three different groups of benthic primary producers from the Mission-

1 Aransas estuary: 1) C<sub>3</sub> salt marsh plants, 2) benthic microalgae, and 3) C<sub>4</sub> salt marsh plants and  
2 seagrass (Peterson and Howarth, 1987; Sullivan and Moncreiff, 1990; Currin et al., 1995; Connolly et  
3 al., 2004).  
4  
5  
6  
7  
8

### 9 **3.3 Origin and quality of allocthonous inputs from the Aransas and Mission rivers and from the** 10 **Gulf of Mexico** 11

12 The Mission-Aransas estuary receives inputs of organic matter from its different watersheds,  
13 mostly the Aransas and Mission rivers, which drain the highest quantity of freshwater into this  
14 estuary. Some allocthonous inputs may also originate from the Gulf of Mexico, via the pass at Port  
15 Aransas, due to movements of water masses due to tides, winds and evaporation of water into  
16 Aransas bay (Solis and Powell, 1999). During this survey, the origin and quality of allocthonous inputs  
17 of organic matter may have been influenced by two patterns: 1) From November 2010 to August  
18 2011, a general decrease of freshwater inflow, and 2) A minor rain event in January 2011.  
19  
20  
21  
22  
23  
24  
25  
26  
27  
28  
29

30  $\delta^{13}\text{C}$ ,  $\delta^{15}\text{N}$  and  $\delta^{34}\text{S}$  values of SPOM at GoM station were stable throughout the year, ranging from  
31 to -23.2 (January 2011) to -20.8‰ (April 2011), from 6.5 (December 2010) to 8.6‰ (May 2010) and  
32 from 16.5 (May 2011) to 18.5‰ (July and January 2011), respectively (Fig. 5, Table 2, Appendix A).  
33 Chl *a* concentrations were relatively low all year long, with values ranging from 2.1±0.2 (May 2011)  
34 to 6.7±0.3  $\mu\text{g}\cdot\text{l}^{-1}$  (February 2011) (Fig. 6). Combined to the low C/chl *a* values (ranging from 154 to  
35 484, Fig. 6), indicating that this organic matter was fresh (Cifuentes et al., 1988; Savoye et al., 2012),  
36 stable isotope values indicated that the composition of organic matter from the Gulf of Mexico  
37 varied little all year long, being mostly composed of fresh marine phytoplankton. Seawater SPOM  
38  $\delta^{13}\text{C}$  values range indeed typically from -18 to -24‰ (Fry and Sherr, 1984, Riera et al., 2000) and  $\delta^{34}\text{S}$   
39 values are close to 21‰ (Fry et al., 1982; Nriagu et al., 1991).  
40  
41  
42  
43  
44  
45  
46  
47  
48  
49  
50  
51  
52  
53

54 Composition of SPOM from Aransas and Mission rivers was generally stable and much more <sup>13</sup>C-  
55 depleted (i.e., ranging from -35.5 to -27.7‰) than SPOM at GoM station, except in January 2011,  
56 when  $\delta^{13}\text{C}$  values of SPOM from Aransas (-24.0‰) and Mission rivers (-25.1‰) were similar to that  
57  
58  
59  
60  
61  
62  
63  
64  
65

1 from GoM (Fig. 5, Tables 2 and 3, Appendix A).  $\delta^{15}\text{N}$  values of SPOM from rivers were much more  
2 variable (Table 2, Fig. 5). SPOM from Mission river typically had  $\delta^{15}\text{N}$  values similar to those observed  
3 in the Mission-Aransas estuary, but low  $\delta^{15}\text{N}$  values in winter (3.6‰ in January 2011) (Fig. 5, Table  
4 3).  $\delta^{15}\text{N}$  values of SPOM from Aransas river were the most variable, with a large enrichment in  $^{15}\text{N}$   
5 between January and February 2011 (17.5‰) and then a gradual decrease in  $^{15}\text{N}$ , until reaching  $\delta^{15}\text{N}$   
6 values observed in the Mission-Aransas estuary in July 2011 (4.8‰) (Fig. 5). SPOM sulfur stable  
7 isotope composition was generally relatively depleted in the Aransas and Mission rivers (from 3.3 to  
8 9.6‰), except in November and December 2010 in the Mission river, when  $\delta^{34}\text{S}$  values of SPOM  
9 were slightly higher (12.1 and 10.7‰, respectively) (Fig. 5).  
10  
11  
12  
13  
14  
15  
16  
17  
18  
19  
20

21 Due to sampling complications, chl *a* concentrations and C/chl *a* ratios are not available at station  
22 MIS in November and in December 2010. From November 2010 to August 2011, chl *a* concentrations  
23 were highly variable in Aransas and Mission rivers, ranging from 0.7 (MIS, January) to 43.2  $\mu\text{g}\cdot\text{l}^{-1}$   
24 (ARA, February) (Fig. 6, Table 2). Chl *a* concentrations were particularly high in Aransas river in  
25 February and March. From May to August, chl *a* concentrations were frequently higher in Aransas  
26 and Mission rivers than at station 5 or GoM (Table 3). C/chl *a* ratios were high in January in Mission  
27 (1638) and Aransas (1385) rivers (Fig. 6).  
28  
29  
30  
31  
32  
33  
34  
35  
36  
37

38 Except in January and February 2011, the composition and quality of organic matter issued from  
39 the Aransas and Mission rivers was pretty constant. The combination of C/chl *a* ratios and of  $\delta^{13}\text{C}$   
40 and  $\delta^{34}\text{S}$  values demonstrates indeed that the organic matter from the Aransas and Mission rivers  
41 was mostly composed of freshwater phytoplankton. The  $\delta^{13}\text{C}$  values of SPOM, lower than -27 ‰, are  
42 typical of freshwater phytoplankton (Fry and Sherr, 1984; Cifuentes et al., 1988; Boutton, 1991) and  
43  $\delta^{34}\text{S}$  values (from 3.3 to 12.2‰) indicated that these primary producers were relying on sulfates  
44 from riverine waters (Nriagu and Coker, 1978; Chukhrov et al., 1980; Nriagu et al., 1991). Carbon to  
45 chl *a* ratios, with most of the values lower than 200, confirmed that SPOM was mostly composed of  
46 fresh material (Cifuentes et al., 1988; Savoye et al., 2012). Blooms of freshwater phytoplankton were  
47 observed in June and July in the Mission river and in July and August in the Aransas river, when Chl *a*  
48  
49  
50  
51  
52  
53  
54  
55  
56  
57  
58  
59  
60  
61  
62  
63  
64  
65

1 concentrations were high ( $>15 \mu\text{g l}^{-1}$ ) and C/chl *a* ratios were lower than 100, demonstrating that  
2 SPOM was only composed of fresh phytoplankton.  
3

4 In January 2011, a minor rain event strongly affected the composition of the riverine SPOM.  
5  
6 Much higher C/chl *a* values ( $> 1300$ ) in January demonstrated that SPOM was mostly composed by  
7 refractory material (i.e., detrital matter) (Cifuentes et al., 1988; Savoye et al., 2012). Higher  $\delta^{13}\text{C}$   
8 values ( $-24.0$  and  $-25.1\text{‰}$  in Aransas and Mission rivers, respectively) indicated a higher influence of  
9  $\text{C}_4$  plant material in the riverine SPOM composition than during previous months. The Mission-  
10 Aransas estuary watershed has a high number of  $\text{C}_4$  primary producers, since it is composed of 30%  
11 of grassland (Mooney and McClelland, 2012), with 68% of the grasses being  $\text{C}_4$  plants (Teeri and  
12 Stowe, 1976). Moreover, main crops in the Mission-Aransas estuary, particularly in the Aransas  
13 watershed are  $\text{C}_4$  plants (i.e., sorghum and corn) (Mooney and McClelland, 2012). The  $^{13}\text{C}$   
14 enrichment indicates rainfall drained high quantities of detrital matter from continental origin within  
15 the watershed into the rivers. In February 2011, the peak of  $\delta^{15}\text{N}$  values in the Aransas river is very  
16 likely related with the release of highly  $^{15}\text{N}$ -enriched nitrogen originating from wastewater treatment  
17 plants (McClelland and Valiela, 1998), probably due to the overwhelming of their treatment  
18 capacities during the January rain event (Mooney and McClelland, 2012). This higher release of  
19 enriched nitrogen only occurred in the Aransas river, which is subject to a much higher discharge of  
20 wastewater than the Mission river (Mooney and McClelland, 2012). The release of enriched  
21 nitrogen, in higher quantities than during base flow (Bruesewitz et al., 2013), stimulated the  
22 production of freshwater phytoplankton in February and March as illustrated by the higher chl *a*  
23 concentrations. The gradual decrease of  $\delta^{15}\text{N}$  values after this event indicates that there was a slow  
24 dilution of this enriched nitrogen during the following months, due to the very low flows of fresh  
25 water. This highlights that the different management and land use land cover of these two rivers—  
26 one with numerous discharge points of wastewater and dominated by a watershed dominated by  
27 agricultural fields, and the other one with low wastewater release and a watershed dominated by  
28 shrub—have a different effect on the riverine SPOM composition. Rain events also have a clear  
29  
30  
31  
32  
33  
34  
35  
36  
37  
38  
39  
40  
41  
42  
43  
44  
45  
46  
47  
48  
49  
50  
51  
52  
53  
54  
55  
56  
57  
58  
59  
60  
61  
62  
63  
64  
65



1 effect on the composition of riverine organic matter: In periods of normal flow, riverine waters  
2 contain low concentrations of high quality SPOM whereas they contain high concentrations of low  
3 quality SPOM during rain events.  
4  
5

6  
7 As evidenced by the decrease in salinity observed at St. 4 in January, there are also exchanges of  
8 organic matter between Copano and Aransas bays, San Antonio bay and Corpus Christi bay through  
9 the Intracoastal Waterway. Unfortunately, our sampling design did not take into account these  
10 potential flows of organic matter, and it is therefore not possible to determine the composition and  
11 the quantity of organic matter carried by the Intracoastal Waterway.  
12  
13  
14  
15  
16  
17  
18  
19  
20

### 21 **3.4 Autochthonous phytoplankton dominates SPOM composition during droughts**

22  
23  $\delta^{13}\text{C}$  values of SPOM in the Mission Aransas estuary (i.e., stations 1 to 5) ranged from -26.9  
24 (January 2011, Station 2) to -20.8‰ (April 2011, station 4) and were relatively stable throughout the  
25 year. No clear temporal pattern was observed even though some  $\delta^{13}\text{C}$  values of SPOM were  
26 occasionally significantly lower during some fall and winter months than during some spring and  
27 summer months (Fig. 5, Table 2). No clear spatial difference was observed between  $\delta^{13}\text{C}$  values in  
28 the estuary, except in January 2011, when SPOM at station 2 was significantly more depleted than at  
29 station 5 (Fig. 5, Table 3).  $\delta^{15}\text{N}$  values of SPOM at stations 1 to 5 were also relatively stable and  
30 similar between stations, ranging from 4.7 (August 2011, station 1) to 8.8‰ (November 2010,  
31 station 2) (Fig. 5, Tables 2 and 3).  $\delta^{34}\text{S}$  values of SPOM were rather relatively stable and similar  
32 throughout the year from stations 1 to 5, ranging from 11.9 (January 2011, station 1) to 20.0‰ (April  
33 2011, station 4) (Fig. 5, Tables 2 and 3). Chl *a* concentrations were less variable in the Mission-  
34 Aransas estuary (St. 1 to St. 5) than in the rivers, ranging from 0.7 (July 2011, station 5) to 20.1  $\mu\text{g.l}^{-1}$   
35 (April 2011, station 1). Two peaks of chl *a* concentrations in November and April were observed at  
36 station 1 (Fig. 6, Table 2). C/chl *a* ratios observed in the Mission-Aransas estuary ranged from 114  
37 (January 2011, station 1) to 803 (February 2011, station 3) (Fig. 6).  
38  
39  
40  
41  
42  
43  
44  
45  
46  
47  
48  
49  
50  
51  
52  
53  
54  
55  
56  
57  
58  
59  
60  
61  
62  
63  
64  
65

1 As a result, the composition of SPOM was relatively constant in the Mission-Aransas estuary  
2 during the survey, even if some slight spatio-temporal differences were observed. On a yearly basis,  
3  
4  $\delta^{13}\text{C}$  and  $\delta^{34}\text{S}$  values of estuarine SPOM were very different from the carbon and sulfur isotopic  
5  
6 compositions of benthic primary producers (Fig. 3), demonstrating that these primary producers had  
7  
8 a negligible influence on the composition of estuarine SPOM, either as fresh (i.e., resuspended  
9  
10 benthic microalgae) or as detrital matter (i.e., seagrass,  $\text{C}_3$  or  $\text{C}_4$  plant) (Qian et al., 1996). The carbon  
11  
12 and sulfur isotopic composition of estuarine SPOM demonstrated that this organic matter was, all  
13  
14 year long, mostly composed by locally produced phytoplankton. This indicates minimal benthic-  
15  
16 pelagic coupling in the Mission-Aransas estuary, which is relatively surprising because windy  
17  
18 conditions can increase turbidity (Beseres Pollack et al., 2012), allowing for resuspension of  
19  
20 sediment organic matter. Organic matter of benthic origin is thus either exported as large particles  
21  
22 (e.g., seagrass leaves) or buried in the sediment.  
23  
24  
25  
26  
27

28 The carbon and sulfur isotopic compositions of estuarine SPOM were very different from those of  
29  
30 riverine SPOM (Fig. 3). From March to July, there was also no influence of the highly  $^{15}\text{N}$ -enriched  
31  
32 SPOM discharge from the Aransas river in Copano bay (Fig. 5). This indicates that organic matter  
33  
34 from rivers had a very low influence on the general functioning of the Mission-Aransas estuary  
35  
36 during droughts, probably because inputs of riverine SPOM were in very low quantity, due to the  
37  
38 very low freshwater inflows, whereas autochthonous phytoplanktonic production is high in the  
39  
40 Mission-Aransas estuary, like in other Texas estuaries (Pennock et al., 1999).  
41  
42  
43  
44  
45  
46

### 47 **3.5 Effect of freshwater inflow into composition of SPOM**

48 A slight influence of riverine SPOM was occasionally and very locally observed during the minor  
49  
50 rain event - which occurred in January - at stations close to the Aransas and Mission river mouths  
51  
52 and at station 4, probably due to an influence of riverine organic matter from San Antonio bay  
53  
54 drained through the Intracoastal Waterway. We used data from our survey (i.e. during drought) and  
55  
56 from the survey carried out by Mooney and McClelland (2012) (i.e. during drought and flood) for  
57  
58  
59  
60  
61  
62  
63  
64  
65

1 Copano bay, the secondary bay of the estuary, to determine how freshwater inflows affect the  
2 composition and the quality of the SPOM. We determined that an exponential relationship exists  
3  
4 between SPOM  $\delta^{13}\text{C}$  values and monthly freshwater inflows (moving average of the present and the  
5  
6 two previous monthly freshwater inflows) from the Aransas and Mission rivers (Fig. 7).  
7

8  
9 We then considered two scenarios: droughts and rain events. In our study, we observed that the  
10 riverine SPOM is dominated by freshwater phytoplankton ( $\delta^{13}\text{C} = -31.4\text{‰}$ ) during droughts and by  
11  
12 detrital matter of  $\text{C}_3$ -plants ( $\delta^{13}\text{C} = -24.7\text{‰}$ ) during rain events. We considered that the SPOM  $\delta^{13}\text{C}$   
13  
14 value in Copano bay without any freshwater inflow (i.e., autochthonous production only) would be  
15  
16 equal to the  $\delta^{13}\text{C}$  value of SPOM from the Gulf of Mexico ( $-22.1 \text{‰}$ ). For both scenarios, we  
17  
18 computed the average  $\delta^{13}\text{C}$  value which would result from an equal mixture of SPOM from rivers and  
19  
20 SPOM from autochthonous production. We then determined the threshold of monthly freshwater  
21  
22 inflow between a system more influenced by riverine inputs vs. a system more influenced by  
23  
24 autochthonous production. In other words, a monthly freshwater inflow higher than the threshold  
25  
26 indicates that SPOM in the secondary bay is dominated by riverine inputs whereas a monthly  
27  
28 freshwater inflow lower than the threshold indicates that SPOM in the secondary bay is dominated  
29  
30 by autochthonous production.  
31  
32  
33  
34  
35  
36

37  
38 The scenario based on drought conditions gave an inflow threshold of  $6.8 \text{ million m}^3 \text{ month}^{-1}$ . This  
39  
40 inflow of freshwater is much higher than the base flow conditions, and corresponds to a very high  
41  
42 discharge of freshwater, which only occurs during large rain events. As a result, this computation  
43  
44 demonstrates that the required inflow of freshwater for a significant effect of riverine inputs into the  
45  
46 SPOM composition of Copano bay corresponds to a large rise in river level (i.e., rain event, which  
47  
48 does not correspond to this scenario anymore). This means that riverine inputs during droughts  
49  
50 (composed by riverine fresh phytoplankton) cannot have any major influence in the SPOM  
51  
52 composition of this secondary bay. As a result, during droughts, SPOM will always be dominated by  
53  
54 locally produced phytoplankton.  
55  
56  
57  
58  
59  
60  
61  
62  
63  
64  
65

1 The scenario based on rain event conditions gave an inflow threshold of 910,000 m<sup>3</sup> month<sup>-1</sup>.  
2 Consequently, when freshwater inflow is higher than this threshold the SPOM in Copano bay shifts  
3 gradually from fresh autochthonous phytoplankton to highly degraded terrestrial material. Indeed,  
4 the very high C/chl *a* ratios of riverine SPOM drained during rain events indicate that this material is  
5 highly degraded, and is probably of very low nutritive quality for potential consumers (e.g.,  
6 suspension feeders) (Ittekkot, 1988). The quality of the SPOM thus decreases into Copano bay,  
7 which may affect its fate and very likely the functioning of the estuarine food web. In 2007, the large  
8 floods, which occurred in the Mission Aransas estuary watershed affected oyster filtration rates, due  
9 to low salinities (Beseres Pollack et al., 2011). We suggest that the poor quality of the organic matter  
10 provided to the oysters during rain events may also affect the filtration rates, and thus the growth of  
11 oysters.  
12  
13  
14  
15  
16  
17  
18  
19  
20  
21  
22  
23  
24

25  
26 Minor rain events may also affect local production of phytoplankton, as demonstrated by the  
27 peak of chlorophyll *a* in January (Pennock et al., 1999; Mooney and McClelland, 2012).  
28 Phytoplankton production increase due to a higher discharge of nutrients and remineralization of  
29 terrestrial organic matter drained into the estuary (Mooney and McClelland, 2012; Bruesewitz et al.,  
30 2013). As a result, even if pulses of freshwater do not drain SPOM of sufficient nutritional quality for  
31 its assimilation by consumers, the release of nutrients allows for local increase of autochthonous  
32 phytoplankton production, which may locally support the functioning of food webs.  
33  
34  
35  
36  
37  
38  
39  
40  
41  
42  
43  
44

#### 45 **4. Conclusion: Functioning of a South Texas estuary**

46  
47 Overall, autochthonous phytoplankton was the dominant component of SPOM in the Mission-  
48 Aransas estuary, during droughts but also during the minor rain event. Benthic organic matter did  
49 not influence SPOM composition, either as fresh material or as detritus. The influence of riverine  
50 inputs was very low and restricted to areas close to river mouths, due to the high residence time in  
51 the Mission-Aransas estuary (Solis and Powell, 1999).  
52  
53  
54  
55  
56  
57  
58  
59  
60  
61  
62  
63  
64  
65

1  
2  
3  
4  
5  
6  
7  
8  
9  
10  
11  
12  
13  
14  
15  
16  
17  
18  
19  
20  
21  
22  
23  
24  
25  
26  
27  
28  
29  
30  
31  
32  
A comparison of the functioning of the Mission-Aransas estuary with the Sabine-Neches estuary (i.e., neutral vs. highly positive estuary) reveals that freshwater inflow clearly affects composition of SPOM in these two estuaries. On a global basis, the Sabine-Neches receives high loads of low quality organic matter which are relatively quickly flushed outside of the system due to the large freshwater inflow whereas the biomass of autochthonous phytoplankton is low due to the high turbidity (Cifuentes et al, 1999). The general functioning of the Mission-Aransas estuary is different, with high phytoplanktonic production and very low inputs of refractory continental organic matter. The Mission-Aransas estuary is thus dominated by autochthonous production. Because of predicted global change, which will result in a drier climate along Gulf of Mexico coastline (Nielsen-Gammon, 2011 ; IPCC, 2013) and the increasing demand for fresh water for human activities (Montagna et al., 2002), it is therefore probable that general functioning of Texas estuaries will shift towards systems less based on allochthonous inputs of SPOM and much more influenced by SPOM from autochthonous pelagic production. These changes in organic matter quality will probably have a large effect on the functioning of food webs in Texas estuaries.

33  
34  
35  
36  
37  
38  
39  
40  
41  
42  
43  
44  
45  
46  
47  
48  
49  
50  
51  
52  
A potential shift from estuaries where SPOM is dominated by poor quality allochthonous inputs to estuaries dominated by high quality autochthonous production would also lead to issues related with nutrients, due to the importance of nutrients for phytoplankton production. A better understanding of the relationships between nutrient inputs and freshwater inflows, such as that carried out by Mooney and McClelland (2012) in Copano bay, may be necessary at a much larger regional scale. A monitoring of these changes along the Texas coastline will require a combination of studies based on SPOM composition and nutrient loads along the coastal shoreline.

## 5. Acknowledgments

54  
55  
56  
57  
58  
59  
60  
61  
62  
63  
64  
65  
This study was partially funded thanks to a postdoctoral research grant from the Conseil Général of Charente Maritime in France. B. Lebreton is grateful to R. Kalke, M. Besonen, S. Arismendez, D. Yoskowitz, P. Richard and G. Blanchard for their very helpful advices and their support. Authors

1 thank E. Hill and K. Withers for their help in benthic algae identification and G. Wise who allowed the  
2 collection of water samples on his property. B. Lebreton also thanks E. Morgan, A. Lord, C. Santos, L.  
3  
4 Hutchison, K. Welder, B. Paudel, L. Hyde, D. Mangold, E. Chalkley, C. Taylor, M. Proffitt, E. Buschfort,  
5  
6 C. Hampton, C. Carollo, M. Barajas for their invaluable help during collection and preparation of  
7  
8 samples, and G. Sutton, L. Eckert and A. Knight for their support in administrative tasks. Authors also  
9  
10 thank the two reviewers who helped to improve the manuscript thanks to their comments.  
11  
12  
13  
14  
15

## 16 **6. References**

- 17  
18  
19 Armstrong, N.A., 1987. The Ecology of Open-bay Bottoms of Texas: a Community Profile. U. S. Fish  
20  
21 and Wildlife Service Biological Report 85, Austin, USA, 104 pp.  
22  
23 Beck, M.W., Heck Jr., K.L. , Able, K.W., Childers, D.L., Eggleston, D.B., Gillanders, B.M., Halpern, B.,  
24  
25 Hays, C.G., Hoshino, K., Minello, T.J., Orth, R.J., Sheridan, P.F., Weinstein, M.P., 2001. The  
26  
27 identification, conservation, and management of estuarine and marine nurseries for fish  
28  
29 and invertebrates. *Bioscience* 51, 633-641.  
30  
31  
32 Beck, M.W., Brumbaugh, R.D., Airoidi, L., Carranza, A., Coen, L.D., Crawford, C., Defeo, O., Edgar,  
33  
34 G.J., Hancock, B., Kay, M.C., Lenihan, H.S., Luckenbach, M.W., Toropova, C.L., Zhang, G.,  
35  
36 Guo, X., 2011. Oyster reefs at risk and recommendations for conservation, restoration, and  
37  
38 management. *Bioscience* 61, 107-116.  
39  
40  
41  
42 Belicka, L.L., Burkholder, D., Fourqurean, J.W., Heithaus, M.R., Macko, S.A., Jaffé, R., 2012. Stable  
43  
44 isotope and fatty acid biomarkers of seagrass, epiphytic, and algal organic matter to  
45  
46 consumers in a pristine seagrass ecosystem. *Marine and freshwater research* 63, 1085-  
47  
48 1097.  
49  
50  
51  
52 Benner, R., Fogel, M.L., Sprague, E.K., Hodson, R.E., 1987. Depletion of <sup>13</sup>C in lignin and its  
53  
54 implication for stable carbon isotope studies. *Nature* 329, 708-710.  
55  
56  
57  
58  
59  
60  
61  
62  
63  
64  
65

- 1 Beseres Pollack, J., Cleveland, A., Palmer, T.A., Reisinger, A.S., Montagna, P.A., 2012. A Restoration  
2 suitability index model for the eastern oyster (*Crassostrea virginica*) in the Mission-Aransas  
3 estuary, TX, USA. PLoS ONE 7, e40839.  
4  
5  
6  
7 Beseres Pollack, J., Kim, H.-C., Morgan, E.K., Montagna, P.A., 2011. Role of flood disturbance in  
8 natural oyster (*Crassostrea virginica*) population maintenance in an estuary in South Texas,  
9 USA. Estuaries and Coasts 34, 187-197.  
10  
11  
12  
13 Borel, K., Karthikeyan, R., Berthold, T.A., Wagner, K., 2015. Estimating *E. coli* and *Enterococcus* loads  
14 in a coastal Texas watershed. Texas Water Journal 6, 33-44.  
15  
16  
17  
18 Boutton, T.W., 1991. Stable carbon isotope ratios of natural materials: II. Atmospheric, terrestrial,  
19 marine, and freshwater environments. In: Coleman, D.C., Fry, B., (Eds.), Carbon isotope  
20 techniques. Academic press, San Diego, pp. 173-185.  
21  
22  
23  
24  
25  
26 Bruesewitz, D.A., Gardner, W.S., Mooney, R.F., Pollard, L., Buskey, E.J., 2013. Estuarine ecosystem  
27 function response to flood and drought in a shallow, semiarid estuary: Nitrogen cycling and  
28 ecosystem metabolism. Limnology and Oceanography 58, 2293-2309.  
29  
30  
31  
32  
33 Carlson Jr., P.R., Forrest, J., 1982. Uptake of dissolved sulphide by *Spartina alterniflora*. Evidence  
34 from natural sulphur isotope abundance ratios. Science 216, 633-635.  
35  
36  
37  
38 Cifuentes, L.A., Sharp, J.H., Fogel, M.L., 1988. Stable carbon and nitrogen isotope biogeochemistry in  
39 the Delaware estuary. Limnology and Oceanography 33, 1102-1115.  
40  
41  
42  
43 Cifuentes, L.A., Coffin, R.B., Morin, J., Bianchi, T.S., Eldridge, P.M., 1999. Particulate organic matter in  
44 Gulf of Mexico estuaries - Implications for net heterotrophy. In: Bianchi, T.S., Pennock, J.R.,  
45 Twilley, R.R. (Eds.), Biogeochemistry of Gulf of Mexico estuaries. John Wiley & Sons, New  
46 York, pp. 239-267.  
47  
48  
49  
50  
51  
52 Chukhrov, F.V., Ermilova, L.P., Churikov, V.S., Nosik, L.P., 1980. The isotopic composition of plant  
53 sulfur. Organic Geochemistry 2, 69-75.  
54  
55  
56  
57 Connolly, R.M., Guest, M.A., Melville, A.J., Oakes, J.M., 2004. Sulfur stable isotopes separate  
58 producers in marine food-web analysis. Oecologia 138, 161-167.  
59  
60  
61  
62  
63  
64  
65

- 1  
2  
3  
4  
5  
6  
7  
8  
9  
10  
11  
12  
13  
14  
15  
16  
17  
18  
19  
20  
21  
22  
23  
24  
25  
26  
27  
28  
29  
30  
31  
32  
33  
34  
35  
36  
37  
38  
39  
40  
41  
42  
43  
44  
45  
46  
47  
48  
49  
50  
51  
52  
53  
54  
55  
56  
57  
58  
59  
60  
61  
62  
63  
64  
65
- Currin, C.A., Newell, S.Y., Paerl, H.W., 1995. The role of standing dead *Spartina alterniflora* and benthic microalgae in salt marsh food webs: considerations based on multiple stable isotope analysis. *Marine Ecology Progress Series* 121, 99-116.
- Dunton, K.H., Hardegree, B., Whitledge, T.E., 2001. Response of estuarine marsh vegetation to interannual variations in precipitation. *Estuaries* 24, 851-861.
- Evans, A., Morehead Palmer, S., 2012. Hydrography and oceanography. In: Evans, A., Madden, K., Morehead Palmer, S., *The Ecology and Sociology of the Mission-Aransas Estuary. An Estuarine and Watershed Profile.* University of Texas Marine Science Institute, Port Aransas, pp. 19-23.
- Fry, B., Scalan, R.S., Winters, J.K., Parker, P.L., 1982. Sulphur uptake by salt grasses, mangroves, and seagrasses in anaerobic sediments. *Geochimica et Cosmochimica Acta* 46, 1121-1124.
- Fry, B., Sherr, E.B., 1984.  $\delta^{13}\text{C}$  measurements as indicators of carbon flow in marine and freshwater ecosystems. *Contributions in Marine Science* 27, 13-47.
- Fry, B., Chumcall, M.M., 2011. Sulfur stable isotope indicators of residency in estuarine fish. *Limnology and Oceanography* 56, 1563-1576.
- Giraudeau, P., 2011. pgirmess: data analysis in ecology. R package version 1.5.0. <http://cran.r-project.org/web/packages/pgirmess/index.html>
- Grabowski, J.H., Brumbaugh, R.D., Conrad, R.F., Keeler, A.G., Opaluch, J.J., Peterson, C.H., Piehler, M.F., Powers, S.P., Smyth, A.R., 2012. Economic valuation of ecosystem services provided by oyster reefs. *Bioscience* 62, 900-909.
- Hedges, J.I., Keil, R.G., Benner, R., 1997. What happens to terrestrial organic matter in the coean? *Organic Geochemistry* 27, 195-212.
- Hemminga, M.A., Mateo, M.A., 1996. Stable carbon isotopes in seagrasses: variability in ratios and use in ecological studies. *Marine Ecology Progress Series* 140, 285-298.
- Herlory, O., Richard, P., Blanchard, G.F., 2007. Methodology of light response curves: application of chlorophyll fluorescence to microphytobenthic biofilms. *Marine Biology* 153, 91-101.



- 1  
2  
3  
4  
5  
6  
7  
8  
9  
10  
11  
12  
13  
14  
15  
16  
17  
18  
19  
20  
21  
22  
23  
24  
25  
26  
27  
28  
29  
30  
31  
32  
33  
34  
35  
36  
37  
38  
39  
40  
41  
42  
43  
44  
45  
46  
47  
48  
49  
50  
51  
52  
53  
54  
55  
56  
57  
58  
59  
60  
61  
62  
63  
64  
65
- IPPC, 2013. Climate change 2013: The physical science basis. Contribution of working group I to the fifth assessment report of the intergovernmental panel on climate change. Stocker, T. F., Qin, D., Plattner, G.-K., Tignor, M., Allen, S. K., Boschung, J., Nauels, A., Xia, Y., Bex, V., Midgley, P. M. (Eds.). Cambridge University Press, Cambridge, 1535 pp.
- Ittekkot, V., 1988. Global trends in the nature of organic matter in river suspensions. *Nature* 332, 436-438.
- Johnson, S.L., 2009. A general method for modeling coastal water pollutant loadings. Ph.D. Thesis, University of Texas at Austin, USA, unpublished.
- Kharlamenko, V.I., Kiyashko, S.I., Rodkina, S.A., Imbs, A.B., 2008. Determination of food sources of marine invertebrates from a subtidal sand community using analyses of fatty acids and stable isotopes. *Russian Journal of Marine Biology* 34, 101-109.
- Krouse, H.R., Stewart, J.W.B., Grinenko, V.A., 1991. Pedosphere and biosphere. In: Krouse, H.R., Grinenko, V. A. (Eds.), *Stable Isotopes in the Assessment of Natural and Anthropogenic Sulphur in the Environment*. John Wiley & Sons, Chichester, pp. 267-306.
- Lebreton, B., Richard, P., Galois, R., Radenac, G., Pfléger, C., Guillou, G., Mornet, F., Blanchard, G.F., 2011. Trophic importance of diatoms in an intertidal *Zostera noltii* seagrass bed: Evidence from stable isotope and fatty acid analyses. *Estuarine, Coastal and Shelf Science* 92, 140-153.
- Longley, W.L., 1994. Freshwater inflows to Texas bays and estuaries: ecological relationships and methods for determination of needs. Texas water development board and Texas parks and wildlife department, Austin, 386 pp.
- Longley, W.L., 1995. Estuaries. In: North, G., Schmandt, J., Clarkson, J. (Eds.), *The Impact of Global Warming on Texas: a Report of the Task Force on Climate*. University of Texas Press, Austin, pp. 88-118.
- McClelland, J.W., Valiela, I., 1998. Linking nitrogen in estuarine producers to land-derived sources. *Limnology and Oceanography* 43, 577-585.

- 1  
2  
3  
4  
5  
6  
7  
8  
9  
10  
11  
12  
13  
14  
15  
16  
17  
18  
19  
20  
21  
22  
23  
24  
25  
26  
27  
28  
29  
30  
31  
32  
33  
34  
35  
36  
37  
38  
39  
40  
41  
42  
43  
44  
45  
46  
47  
48  
49  
50  
51  
52  
53  
54  
55  
56  
57  
58  
59  
60  
61  
62  
63  
64  
65
- McLusky, D.S., 1989. *The Estuarine Ecosystem*. Chapman and Hall, New York, 256 pp.
- Mooney, R.F., McClelland, J., 2012. Watershed export events and ecosystem responses in the Mission–Aransas National Estuarine Research Reserve, South Texas. *Estuaries and Coasts* 35, 1468-1485.
- Minagawa, M., Wada, E., 1984. Stepwise enrichment of  $^{15}\text{N}$  along food chains: further evidence and the relation between  $\delta^{15}\text{N}$  and animal age. *Geochimica et Cosmochimica Acta* 48, 1135-1140.
- Modéran, J., David, V., Bouvais, P., Richard, P., Fichet, D., 2012. Organic matter exploitation in a highly turbid environment: Planktonic food web in the Charente estuary, France. *Estuarine, Coastal and Shelf Science* 98, 126-137.
- Moncreiff, C.A., Sullivan, M.J., 2001. Trophic importance of epiphytic algae in subtropical seagrass beds: evidence from multiple stable isotope analyses. *Marine Ecology Progress Series* 215, 93-106.
- Montagna, P.A., Alber, M., Doering, P., Connor, M.S., 2002. Freshwater inflow: science, policy, management. *Estuaries* 25, 1243-1245.
- Montagna, P.A., Palmer, T.A., Beseres Pollack, J., 2013. Conceptual model of estuary ecosystems. In: Montagna, P. A., Palmer, T. A., Beseres Pollack, J. (Eds.), *Hydrological Changes and Estuarine Dynamics*. Springer, New York, pp. 5-21.
- Nielsen-Gammon, J., 2011. The changing climate of Texas. In: Schmandt, J., Clarkson, J., North, G.R. (Eds.), *The Impact of Global Warming on Texas*. University of Texas Press, Austin, pp 24-56.
- Nriagu, J.O., Coker, R.D., 1978. Isotopic composition of sulphur in atmospheric precipitation around Sudbury, Ontario. *Nature* 278, 883-885.
- Nriagu, J.O., Rees, C.E., Mekhtiyeva, V.L., Yu, L., Fritz, P., Drimmie, R.J., Pankina, R.G., Robinson, R.W., Krouse, H.R., 1991. Hydrosphere. In: Krouse, H.R., Grinenko, V. A (Eds.), *Stable Isotopes in the Assessment of Natural and Anthropogenic Sulphur in the Environment*. John Wiley & Sons, Chichester, pp. 177-265.

- 1  
2  
3  
4  
5  
6  
7  
8  
9  
10  
11  
12  
13  
14  
15  
16  
17  
18  
19  
20  
21  
22  
23  
24  
25  
26  
27  
28  
29  
30  
31  
32  
33  
34  
35  
36  
37  
38  
39  
40  
41  
42  
43  
44  
45  
46  
47  
48  
49  
50  
51  
52  
53  
54  
55  
56  
57  
58  
59  
60  
61  
62  
63  
64  
65
- O'Leary, M.H., Madhavan, S., Paneth, P., 1992. Physical and chemical basis of carbon isotope fractionation in plants. *Plant, Cell & Environment* 15, 1099-1104.
- Oakes, J.M., Connolly, R., 2004. Causes of sulfur isotope variability in the seagrass, *Zostera capricorni*. *Journal of Experimental Marine Biology and Ecology* 302, 153-164.
- Orlando Jr., S.P., Rozas, L.P., Ward, G.H., Klein, C.J., 1993. Salinity Characteristics of Gulf of Mexico Estuaries. National Oceanic and Atmospheric Administration, Office of Ocean Resources Conservation and Assessment, Silver Spring, 209 pp.
- Pennock, J.R., Boyer, J.N., Herrera-Silveira, J.A., Iverson, R.L., Whitledge, T.E., Mortazavi, B., Comin, F.A., 1999. Nutrient behavior and phytoplankton production in Gulf of Mexico estuaries. In: Bianchi, T.S., Pennock, J.R., Twilley, R.R. (Eds.), *Biogeochemistry of Gulf of Mexico Estuaries*. John Wiley & Sons, New York, pp. 109-162.
- Peterson, B.J., Howarth, R.W., Garritt, R.H., 1985. Multiple stable isotopes used to trace the flow of organic matter in estuarine food webs. *Science* 227, 1361-1363.
- Peterson, B.J., Howarth, R.W., Garritt, R.H., 1986. Sulfur and carbon isotopes as tracers of salt-marsh organic matter flow. *Ecology* 67, 865-874.
- Peterson, B.J., Fry, B., 1987. Stable isotopes in ecosystem studies. *Annual Review of Ecology and Systematics* 18, 293-320.
- Peterson, B.J., Howarth, R.W., 1987. Sulfur, carbon, and nitrogen isotopes used to trace organic matter flow in the salt-Marsh estuaries of Sapelo Island, Georgia. *Limnology and Oceanography* 32, 1195-1213.
- Pritchard, D.W., 1952. Estuarine hydrography. In: Landsberg, H.E. (Ed.), *Advances in Geophysics*. Academic Press, New York, pp. 243-280.
- Qian, Y., Kennicutt II, M.C., Svalberg, J., Macko, S.A., Bidigare, R.R., Walker, J., 1996. Suspended particulate organic matter (SPOM) in Gulf of Mexico estuaries: compound-specific isotope analysis and plant pigment compositions. *Organic Geochemistry* 24, 875-888.

- 1 R Development Core Team, 2008. R: a Language and Environment for Statistical Computing. R  
2 Foundation for Statistical Computing, Vienna, Austria. [http:// www.R-project.org](http://www.R-project.org)  
3  
4 Raymond, P.A., Bauer, J.E., 2001. Riverine export of aged terrestrial organic matter to the North  
5 Atlantic Ocean. *Nature* 409, 497-500.  
6  
7 Riera, P., Montagna, P.A., Kalke, R.D., Richard, P., 2000. Utilization of estuarine organic matter  
8 during growth and migration by juvenile brown shrimp *Penaeus aztecus* in a South Texas  
9 estuary. *Marine Ecology Progress Series* 199, 205-216.  
10  
11 Riera, P., Richard, P., 1996. Isotopic determination of food sources of *Crassostrea gigas* along a  
12 trophic gradient in the estuarine bay of Marennes-Oléron. *Estuarine, Coastal and Shelf*  
13 *Science* 42, 347-360.  
14  
15 Riera, P., Richard, P., 1997. Temporal variation of  $\delta^{13}\text{C}$  in particulate organic matter and oyster  
16 *Crassostrea gigas* in Marennes-Oléron bay (France): effect of freshwater inflow. *Marine*  
17 *Ecology Progress Series* 147, 105-115.  
18  
19 Riera, P., Stal, L.J., Nieuwenhuize, J., Richard, P., Blanchard, G.F., Gentil, F., 1999. Determination of  
20 food sources for benthic invertebrates in a salt marsh (Aiguillon bay, France) by carbon and  
21 nitrogen stable isotopes: importance of locally produced sources. *Marine Ecology Progress*  
22 *Series* 187, 301-307.  
23  
24 Savoye, N., Aminot, A., Tréguer, P., Fontugne, M., Naulet, N., Kérouel, R., 2003. Dynamics of  
25 particulate organic matter  $\delta^{15}\text{N}$  and  $\delta^{13}\text{C}$  during spring phytoplankton blooms in a  
26 macrotidal ecosystem (Bay of Seine, France). *Marine Ecology Progress Series* 255, 27-41.  
27  
28 Savoye, N., David, V., Morisseau, F., Etcheber, H., Abril, G., Billy, I., Charlier, K., Oggian, G.,  
29 Derriennic, H., Sautour, B., 2012. Origin and composition of particulate organic matter in a  
30 macrotidal turbid estuary: The Gironde Estuary, France. *Estuarine, Coastal and Shelf*  
31 *Science* 108, 16-28.  
32  
33  
34  
35  
36  
37  
38  
39  
40  
41  
42  
43  
44  
45  
46  
47  
48  
49  
50  
51  
52  
53  
54  
55  
56  
57  
58  
59  
60  
61  
62  
63  
64  
65

- 1  
2  
3  
4  
5  
6  
7  
8  
9  
10  
11  
12  
13  
14  
15  
16  
17  
18  
19  
20  
21  
22  
23  
24  
25  
26  
27  
28  
29  
30  
31  
32  
33  
34  
35  
36  
37  
38  
39  
40  
41  
42  
43  
44  
45  
46  
47  
48  
49  
50  
51  
52  
53  
54  
55  
56  
57  
58  
59  
60  
61  
62  
63  
64  
65
- Solis, R.S., Powell, G.L., 1999. Hydrography, mixing characteristics, and residence times of Gulf of Mexico estuaries. In: Bianchi, T.S., Pennock, J.R., Twilley, R.R. (Eds.), *Biogeochemistry of Gulf of Mexico Estuaries*. John Wiley & Sons, New York, pp. 29-61.
- Smith, B.N., Epstein, S., 1971. Two categories of  $^{13}\text{C}/^{12}\text{C}$  ratios for higher plants. *Plant Physiology* 47, 380-384.
- Stribling, J.M., Cornwell, J.C., Currin, C., 1998. Variability of stable sulfur isotopic ratios in *Spartina alterniflora*. *Marine Ecology Progress Series* 166, 73-81.
- Sullivan, M.J., Moncreiff, C.A., 1990. Edaphic algae are an important component of salt marsh food-webs: evidence from multiple stable isotope analyses. *Marine Ecology Progress Series* 62, 149-159.
- Teeri, J.A., Stowe, L.G., 1976. Climatic patterns and the distribution of grasses in North America. *Oecologia* 23, 1-12.
- Thode, H.G., 1991. Sulphur isotopes in nature and the environment: an overview. In: Krouse, H.R., Grinenko, V.A. (Eds.), *Stable Isotopes in the Assessment of Natural and Anthropogenic Sulphur in the Environment*. John Wiley & Sons, Chichester, pp. 1-26.
- U.S. Geological Survey, 2012. National Water Information System data available on the World Wide Web (USGS Water Data for the Nation), accessed February 17, 2012, <http://waterdata.usgs.gov/nwis/dvstat?>
- Vander Zanden, M.J., Rasmussen, J.B., 1999. Primary consumer  $\delta^{13}\text{C}$  and  $\delta^{15}\text{N}$  and the trophic position of aquatic consumers. *Ecology* 80, 1395-1404.
- Welschmeyer, N.A., 1994. Fluorometric analysis of chlorophyll *a* in the presence of chlorophyll *b* and pheopigments. *Limnology and Oceanography* 39, 1985-1992.

## Tables

Table 1: Stable isotope compositions ( $\delta^{13}\text{C}$ ,  $\delta^{15}\text{N}$ ,  $\delta^{34}\text{S}$ , mean  $\pm$  standard deviation, ‰) of the different benthic primary producers in the Mission-Aransas estuary. Sample size is displayed in parentheses.

Species	Location	Date	$\delta^{13}\text{C}$	$\delta^{15}\text{N}$	$\delta^{34}\text{S}$	
<b>C3 vascular plants</b>						
<i>Borrchia frutescens</i>	Station 1	November 2010	-26.8 $\pm$ 1.5 (3)	7.0 $\pm$ 0.8 (3)	7.1 $\pm$ 4.6 (3)	
		March 2011	-29.1 $\pm$ 0.2 (3)	6.6 $\pm$ 1.0 (3)	7.5 $\pm$ 0.4 (3)	
		June 2011	-28.9 $\pm$ 0.9 (3)	6.5 $\pm$ 0.1 (3)	17.0 $\pm$ 0.5 (3)	
<i>Phragmites australis</i>	Station 5	November 2010	-26.8 $\pm$ <0.1 (3)	5.4 $\pm$ 0.5 (3)	14.2 $\pm$ 0.7 (3)	
	Station 1	November 2010	-27.2 $\pm$ 0.3 (3)	9.2 $\pm$ 0.5 (3)	-	
<i>Salicornia virginica</i>	Station 1	November 2010	-27.7 $\pm$ 1.0 (3)	6.7 $\pm$ 0.9 (3)	10.3 $\pm$ 0.9 (3)	
		June 2011	-29.2 $\pm$ 0.2 (3)	4.8 $\pm$ 2.3 (3)	13.3 $\pm$ 0.9 (3)	
<i>Suaeda linearis</i>	Station 5	November 2010	-28.8 $\pm$ 0.3 (3)	10.0 $\pm$ 0.4 (3)	12.0 $\pm$ 0.7 (3)	
	Station 1	June 2011	-27.3 $\pm$ 0.8 (3)	7.9 $\pm$ 0.5 (3)	18.4 $\pm$ <0.01 (3)	
<i>Suaeda virginica</i>	Station 5	November 2010	-27.8 $\pm$ 0.2 (3)	8.0 $\pm$ 0.3 (3)	13.7 $\pm$ 1.7 (3)	
		March 2011	-29.2 $\pm$ 0.4 (3)	4.5 $\pm$ 2.3 (3)	13.6 $\pm$ 0.7 (3)	
<b>C4 vascular plants</b>						
<i>Monanthochloe littoralis</i>	Station 5	November 2010	-15.5 $\pm$ 0.9 (3)	6.6 $\pm$ 1.6 (3)	-	
<i>Spartina alterniflora</i>	Station 1	November 2010	-13.4 $\pm$ 0.3 (3)	5.5 $\pm$ 0.5 (3)	7.1 $\pm$ 4.6 (3)	
		March 2011	-12.5 $\pm$ 0.2 (3)	6.0 $\pm$ 0.6 (3)	2.2 $\pm$ 3.0 (3)	
		June 2011	-13.4 $\pm$ 0.1 (3)	4.6 $\pm$ 0.8 (3)	-	
	Station 3	November 2010	-13.6 $\pm$ 0.3 (3)	3.5 $\pm$ 1.3 (3)	-0.8 $\pm$ 0.5 (3)	
<i>Spartina patens</i>	Station 5	June 2011	-13.5 $\pm$ 0.4 (3)	3.6 $\pm$ 0.3 (3)	-	
		November 2010	-13.1 $\pm$ 0.1 (3)	-1.1 $\pm$ 0.6 (3)	-5.8 $\pm$ 1.6 (3)	
		November 2010	-13.3 $\pm$ 0.1 (3)	2.8 $\pm$ 1.0 (3)	-5.3 $\pm$ 1.7 (2)	
<i>Spartina spartinae</i>	Station 1	June 2011	-13.6 $\pm$ 0.3 (3)	7.7 $\pm$ 0.5 (3)	-	
<i>Spartina spartinae</i>	Station 1	November 2010	-13.6 $\pm$ 0.2 (3)	5.3 $\pm$ 0.7 (3)	-	
<b>Seagrass plants</b>						
<i>Halodule wrightii</i>	Leaves	Station 3	November 2010	-13.4 $\pm$ 0.6 (3)	9.2 $\pm$ 0.6 (3)	2.7 $\pm$ 1.5 (3)
			March 2011	-14.2 $\pm$ 0.9 (3)	7.8 $\pm$ 0.2 (3)	-1.5 $\pm$ 1.5 (3)
		Station 4	November 2010	-11.4 $\pm$ 0.1 (3)	2.0 $\pm$ 0.5 (3)	2.3 $\pm$ 1.7 (3)
			June 2011	-12.2 $\pm$ 0.4 (3)	4.3 $\pm$ 0.2 (3)	6.1 $\pm$ 1.8 (3)
		Station 5	November 2010	-11.3 $\pm$ 0.1 (4)	4.4 $\pm$ 0.2 (4)	-0.2 $\pm$ 1.8 (3)
		Roots	Station 3	November 2010	-13.2 $\pm$ 0.4 (3)	8.3 $\pm$ 0.6 (3)
	March 2011			-13.8 $\pm$ 0.3 (3)	7.5 $\pm$ 0.2 (3)	-8.9 $\pm$ 1.2 (3)
	Station 4		November 2010	-11.8 $\pm$ 0.1 (3)	2.3 $\pm$ 0.8 (3)	-2.6 $\pm$ 0.4 (3)
	Detrital matter	Station 4	June 2011	-13.3 $\pm$ 0.2 (2)	4.1 $\pm$ 0.7 (2)	7.8 $\pm$ 0.5 (2)
			November 2010	-10.9 $\pm$ 0.5 (4)	4.0 $\pm$ 0.2 (4)	-11.1 (1)
			November 2010	-18.1 $\pm$ 1.9 (3)	7.5 $\pm$ 0.6 (3)	-2.3 $\pm$ 2.1 (3)
	<i>Ruppia maritima</i>	Leaves	Station 3	November 2010	-11.9 $\pm$ <0.1 (3)	1.8 $\pm$ 0.3 (3)
November 2010				-11.9 $\pm$ <0.1 (3)	1.8 $\pm$ 0.3 (3)	0.3 $\pm$ 2.5 (3)
Station 4			March 2011	-12.9 $\pm$ 0.1 (3)	6.2 $\pm$ 1.1 (3)	6.0 $\pm$ 1.7 (3)
			June 2011	-13.0 $\pm$ 0.3 (3)	4.4 $\pm$ 0.2 (3)	1.6 $\pm$ 0.8 (3)
Station 3	June 2011	-10.7 $\pm$ 0.4 (3)	6.0 $\pm$ 0.8 (3)	3.8 $\pm$ 0.7 (3)		
	November 2010	-10.9 $\pm$ 0.3 (3)	4.1 $\pm$ 0.3 (3)	4.6 $\pm$ 2.7 (3)		

	Roots	Station 1	March 2011	-14.7 ± 2.1 (3)	3.5 ± 0.4 (3)	2.5 ± 3.0 (3)	
1			June 2011	-13.4 ± 0.5 (3)	3.6 ± 0.6 (3)	-3.7 ± 1.8 (3)	
2		Station 3	June 2011	-11.1 ± 0.4 (3)	5.0 ± 0.5 (3)	-8.3 ± 0.9 (3)	
3		Station 4	November 2010	-11.1 ± 0.5 (3)	2.6 ± 0.7 (3)	-3.4 ± 0.7 (3)	
4	<hr/>						
5	<b>Benthic microalgae</b>						
6	Diatoms	Station 1	November 2010	-19.9 ± 0.5 (3)	5.3 ± 0.1 (3)	5.0 (1)	
7			March 2011	-14.2 ± 0.1 (3)	5.0 ± 0.1 (3)	8.2 (1)	
8			June 2011	-13.3 ± 0.4 (9)	4.2 ± 0.6 (9)	5.8 ± 1.3 (8)	
9		Station 3	November 2010	-18.6 ± 0.8 (10)	4.7 ± 0.2 (10)	8.8 ± 2.5 (4)	
10			March 2011	-13.1 ± 0.8 (6)	4.4 ± 0.2 (6)	8.2 (1)	
11			June 2011	-12.7 ± 0.6 (3)	3.8 ± 0.3 (3)	7.7 (1)	
12	Oscillatoriales 1	Station 1	November 2010	-18.2 ± 0.6 (4)	0.7 ± 0.2 (4)	-	
13	(Cyanobacteria)		March 2011	-16.4 ± 0.5 (9)	2.8 ± 1.3 (9)	11.8 ± 2.9 (2)	
14			June 2011	-13.6 ± 0.6 (3)	3.0 ± 0.1 (3)	5.1 ± 0.3 (3)	
15		Station 2	May 2011	-14.4 ± <0.1 (3)	-0.6 ± 0.2 (3)	-	
16		Station 3	June 2011	-12.0 ± 0.1 (3)	4.8 ± 0.1 (3)	8.6 (1)	
17	Oscillatoriales 2	Station 3	March 2011	-13.2 ± 0.1 (2)	3.5 ± 0.1 (2)	6.2 ± 1.6 (7)	
18	(Cyanobacteria)						
19	Merismopedia sp.	Station 1	November 2010	-21.7 ± 0.1 (4)	2.8 ± <0.1 (4)	4.1 (1)	
20	(Cyanobacteria)						
21		Station 3	June 2011	-13.4 ± 0.4 (3)	3.3 ± 0.2 (3)	6.2 ± 0.9 (3)	
22	Benthic algae	Station 3	March 2011	-13.6 ± 0.4 (6)	3.8 ± 0.5 (6)	-	
23	(mixture cyanobacteria and						
24	diatoms)						
25		Station 5	November 2010	-15.1 ± 0.4 (4)	2.4 ± 0.1 (4)	4.6 (1)	
26	<i>Spirogyra</i> sp.	Station 1	November 2010	-17.8 ± 0.6 (7)	4.2 ± 1.2 (7)	-	
27	(Charophyta)						
28		Station 5	November 2010	-13.6 ± 0.4 (2)	1.0 ± 0.1 (2)	-	
29							
30							
31							
32							
33							
34							
35							
36							
37							
38							
39							
40							
41							
42							
43							
44							
45							
46							
47							
48							
49							
50							
51							
52							
53							
54							
55							
56							
57							
58							
59							
60							
61							
62							
63							
64							
65							

Table 2: Summary of Kruskal-Wallis tests and comparisons of means for  $\delta^{13}\text{C}$ ,  $\delta^{15}\text{N}$ ,  $\delta^{34}\text{S}$ , Chl  $a$  and C/chl  $a$  of SPOM between sampling months at each station. Stations: ARA: Aransas river, MIS: Mission river, GoM: Gulf of Mexico.

Station	$\delta^{13}\text{C}$		$\delta^{15}\text{N}$		$\delta^{34}\text{S}$		Chl $a$		C/chl $a$	
	p-values	Comparisons of means	p-values	Comparisons of means	p-values	Comparisons of means	p-values	Comparisons of means	p-values	Comparisons of means
ARA	0.001	Jan > Feb Feb < Aug	0.001	Feb > Jul Feb > Aug	0.025	Nov > Feb	0.001	Dec < Feb Jan < Feb Jan < Mar	0.008	Jan > Feb
MIS	0.001	Nov < Jan Dec < Jan	0.001	Nov > Jan	0.016	-	0.004	Jan < Jul Jan < Jun	0.004	Jan > Jun Jan > Jul
Station 1	0.001	Jan < Apr	0.004	Dec > Aug Jun > Aug	0.008	-	0.001	Nov > Dec Dec < Apr	0.003	Jan < Feb
Station 2	0.001	Nov < Aug Jan < Aug	0.004	Nov > Mar Nov > Jul	0.017	-	0.001	Jan < Mar Mar > May	0.002	Dec > Feb
Station 3	0.004	-	0.043	-	0.087	-	0.006	-	0.016	Jan < Feb
Station 4	0.002	Nov < Apr Jan < Apr	0.002	Nov > Jul Jan > Jul	0.060	-	0.034	Apr > Jul	0.003	Dec < Jul Jan < Jul
Station 5	0.006	-	0.007	-	0.049	-	0.002	Jan > Jul Apr > Jul	0.007	Nov > Apr
GoM	0.011	-	0.006	-	0.118	-	0.009	Feb > May Feb > Aug	0.014	-



Table 3: Summary of Kruskal-Wallis tests and comparisons of means for  $\delta^{13}\text{C}$ ,  $\delta^{15}\text{N}$ ,  $\delta^{34}\text{S}$ , Chl *a* and C/chl *a* of SPOM between sampling stations for each month. Stations: ARA: Aransas river, MIS: Mission river, St. 1 to 5: Stations 1 to 5, GoM: Gulf of Mexico.

Station	$\delta^{13}\text{C}$		$\delta^{15}\text{N}$		$\delta^{34}\text{S}$		Chl <i>a</i>		C/chl <i>a</i>	
	p-values	Comparisons of means	p-values	Comparisons of means	p-values	Comparisons of means	p-values	Comparisons of means	p-values	Comparisons of means
November 10	0.007	MIS < St. 5 MIS < GoM	0.005	ARA > St. 1	0.039	-	0.004	St. 1 > St. 5	0.004	ARA < St. 5 St. 2 < St. 5
December 10	0.003	MIS < St. 5 MIS < GoM	0.096	-	0.017	-	0.030	-	0.030	St. 2 > St. 4
January 11	0.003	St. 2 < St. 5 St. 2 < GoM	0.003	MIS < St. 4	0.013	-	0.003	MIS < St. 1	0.012	-
February 11	0.002	ARA < GoM	0.007	ARA < MIS	0.004	ARA < St. 5	0.002	ARA > MIS ARA > St. 5	0.002	ARA < St. 3
March 11	0.003	ARA < St. 5	0.006	ARA < MIS	0.009	MIS < GoM	0.003	ARA > MIS ARA > St. 5	0.004	ARA < St. 1 ARA < St. 2
April 11	0.004	ARA < St. 4	0.008	ARA > St. 1	0.013	-	0.003	MIS < St. 1	0.012	ARA < St. 1
May 11	0.002	ARA < St. 5 ARA < GoM	0.003	ARA > MIS	0.025	-	0.007	ARA > St. 5 ARA > GoM	0.074	ARA < St. 3
June 11	0.005	-	0.010	ARA > MIS	0.041	-	0.006	MIS > St. 5	0.015	-
July 11	0.030	-	0.006	ARA < MIS ARA < GoM	0.008	-	0.003	ARA > St. 5 MIS > St. 5	0.009	MIS < St. 5
August 11	0.007	-	0.002	ARA < St. 3 St. 1 < St. 3	0.174	-	0.002	ARA > St. 5 ARA > GoM	0.070	-

## Figure captions

1  
2  
3 Figure 1: Location of the Mission-Aransas estuary and of the sampling stations.  
4  
5  
6

7  
8 Figure 2: Salinity (full and dotted lines), monthly inputs of particulate organic carbon from Aransas  
9 and Mission rivers and total freshwater inflow (i. e., Mission and Aransas rivers, shaded curve) in the  
10 Mission-Aransas estuary from September 2010 to December 2011. ARA: Aransas river, MIS: Mission  
11 river, St. 1 to 5: Stations 1 to 5, GoM: Gulf of Mexico. Stars represent missing data.  
12  
13  
14  
15  
16

17  
18  
19 Figure 3:  $\delta^{13}\text{C}$  and  $\delta^{34}\text{S}$  values of primary producers and SPOM in the Mission-Aransas estuary. SPOM  
20 values are means  $\pm$  standard deviations of samples collected from November 2010 to August 2011.  
21  
22 Primary producer values are means of all samples collected in the Mission-Aransas estuary from  
23 November 2010 to August 2011 (see table 1 for standard deviations). ARA: Aransas river, MIS:  
24 Mission river, St. 1 to 5: Stations 1 to 5, GoM: Gulf of Mexico.  
25  
26  
27  
28  
29  
30  
31

32  
33  
34 Figure 4:  $\delta^{13}\text{C}$  values of benthic microalgae and salinities of sampling stations in the Mission-Aransas  
35 estuary at the sampling dates.  
36  
37  
38  
39  
40

41 Figure 5:  $\delta^{13}\text{C}$ ,  $\delta^{15}\text{N}$ ,  $\delta^{34}\text{S}$  values (full and dotted lines) and total freshwater inflow (i. e., Mission  
42 and Aransas rivers, shaded curve) in the Mission-Aransas estuary from September 2010 to December  
43 2011. ARA: Aransas river, MIS: Mission river, St. 1 to 5: Stations 1 to 5, GoM: Gulf of Mexico.  
44  
45  
46  
47  
48  
49

50 Figure 6: Chlorophyll *a* concentration ( $\mu\text{g.l}^{-1}$ ), C/chlorophyll *a* ratios (full and dotted lines) and total  
51 freshwater inflow (i. e., Mission and Aransas rivers, shaded curve) in the Mission-Aransas estuary  
52 from September 2010 to December 2011. ARA: Aransas river, MIS: Mission river, St. 1 to 5: Stations  
53 1 to 5, GoM: Gulf of Mexico.  
54  
55  
56  
57  
58  
59  
60  
61  
62  
63  
64  
65

Figure 7: Relationship between freshwater inflow and stable isotope composition of the SPOM in the secondary bay of the Mission-Aransas estuary (i.e., Copano bay). Two scenarios are considered (i.e., drought, rain event) in order to compute the averaged stable isotope composition of the SPOM and the threshold of freshwater inflow for both scenarios. Data used in this figure are issued from our survey and from the survey carried out by Mooney and McClelland (2012).

1  
2  
3  
4  
5  
6  
7  
8  
9  
10  
11  
12  
13  
14  
15  
16  
17  
18  
19  
20  
21  
22  
23  
24  
25  
26  
27  
28  
29  
30  
31  
32  
33  
34  
35  
36  
37  
38  
39  
40  
41  
42  
43  
44  
45  
46  
47  
48  
49  
50  
51  
52  
53  
54  
55  
56  
57  
58  
59  
60  
61  
62  
63  
64  
65

Figure 1

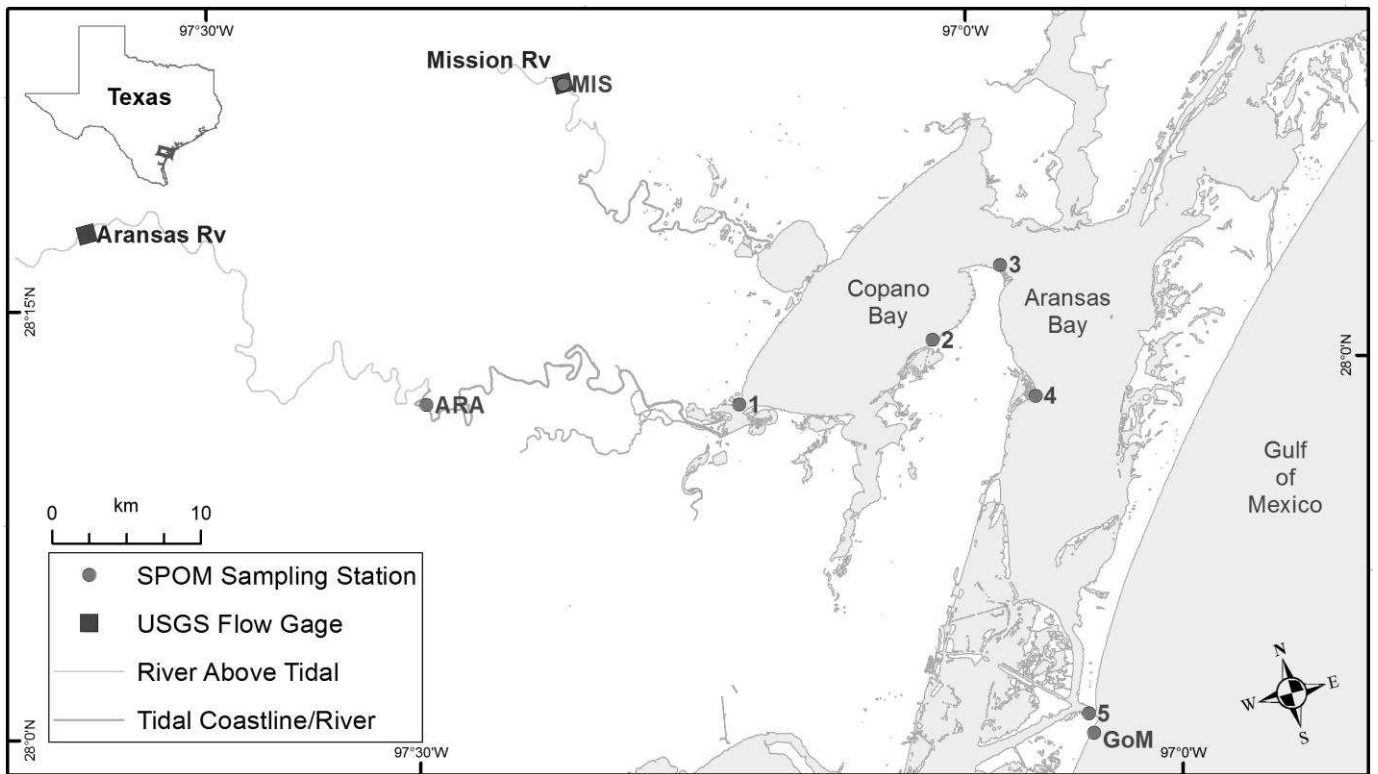


Figure 2

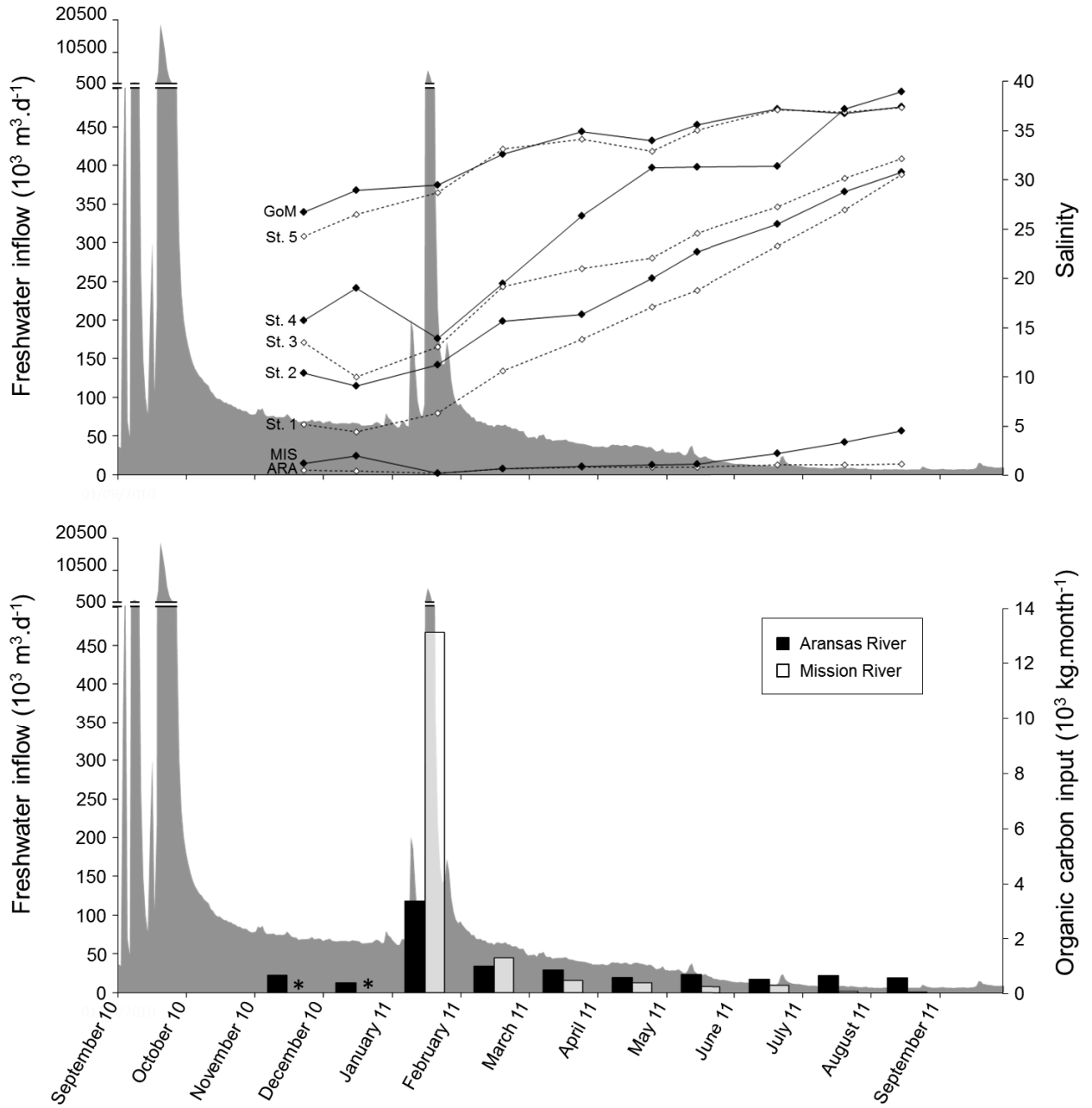


Figure 3

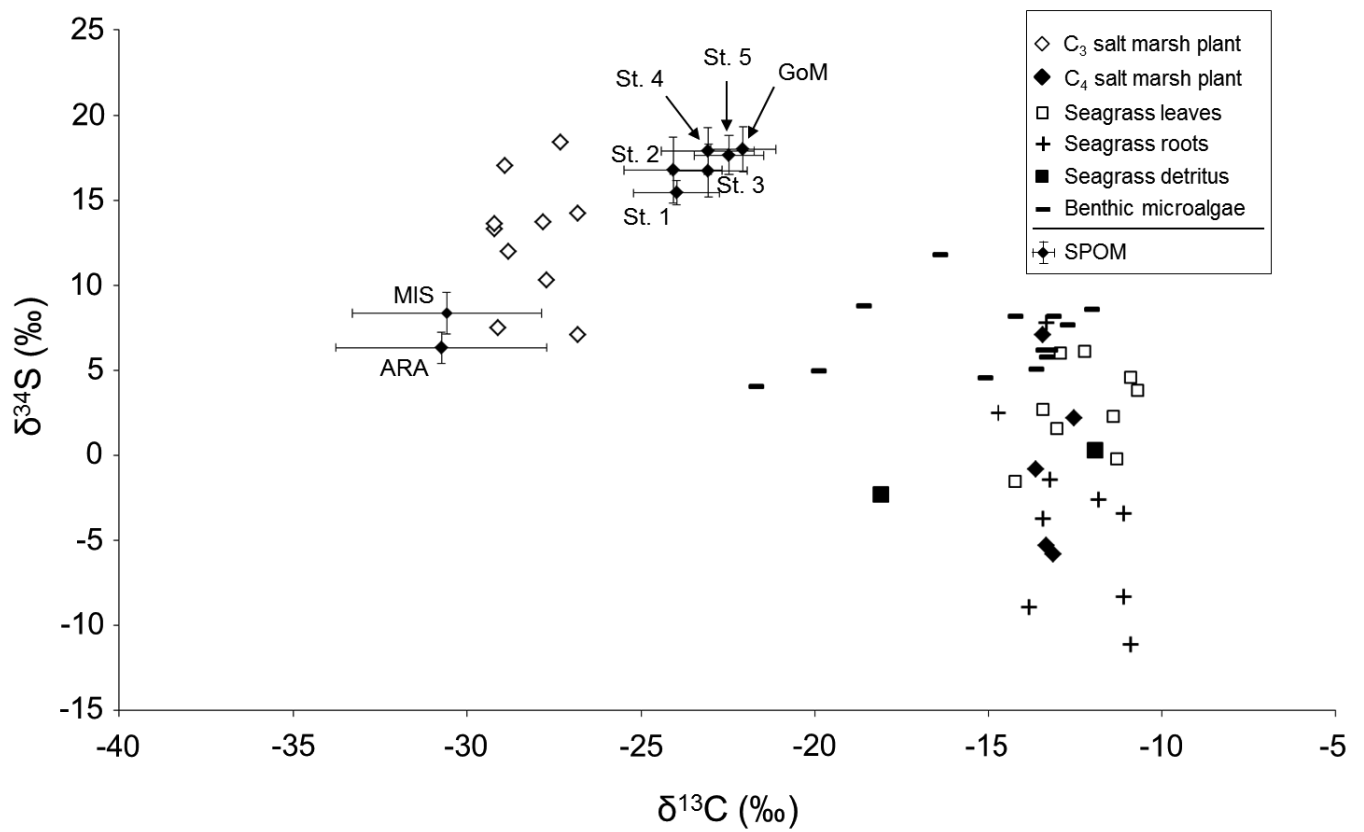


Figure 4

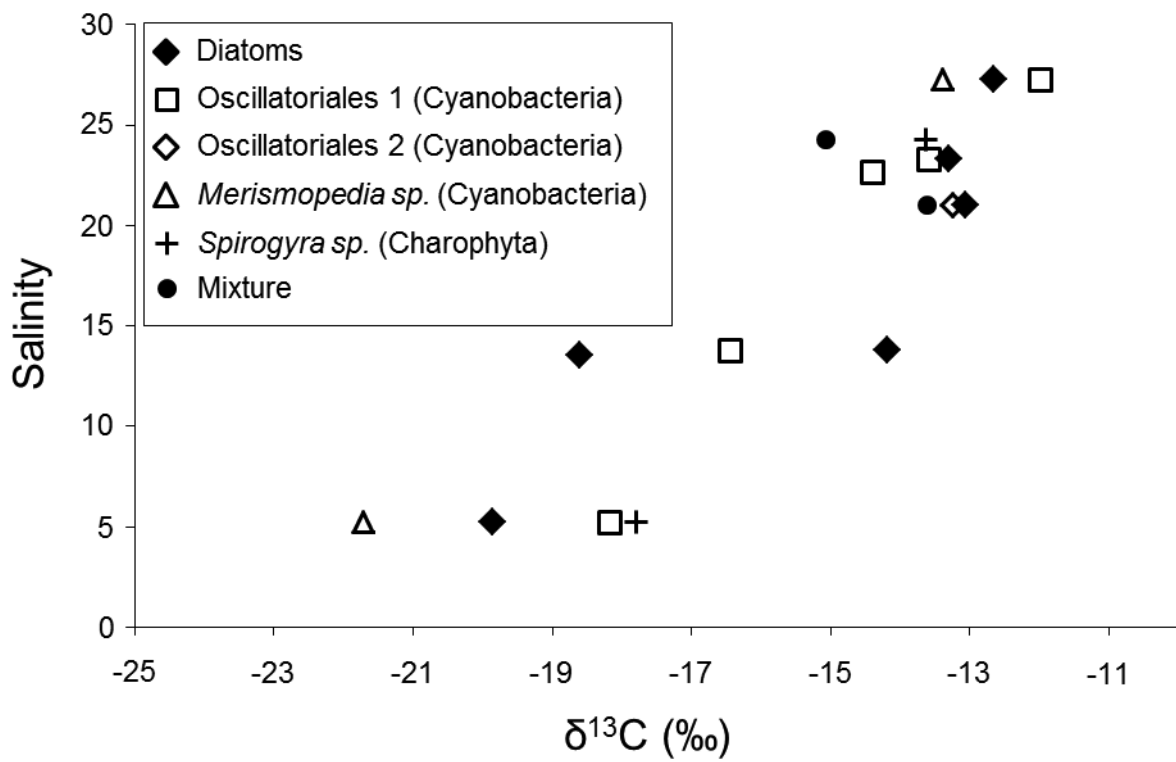


Figure 5

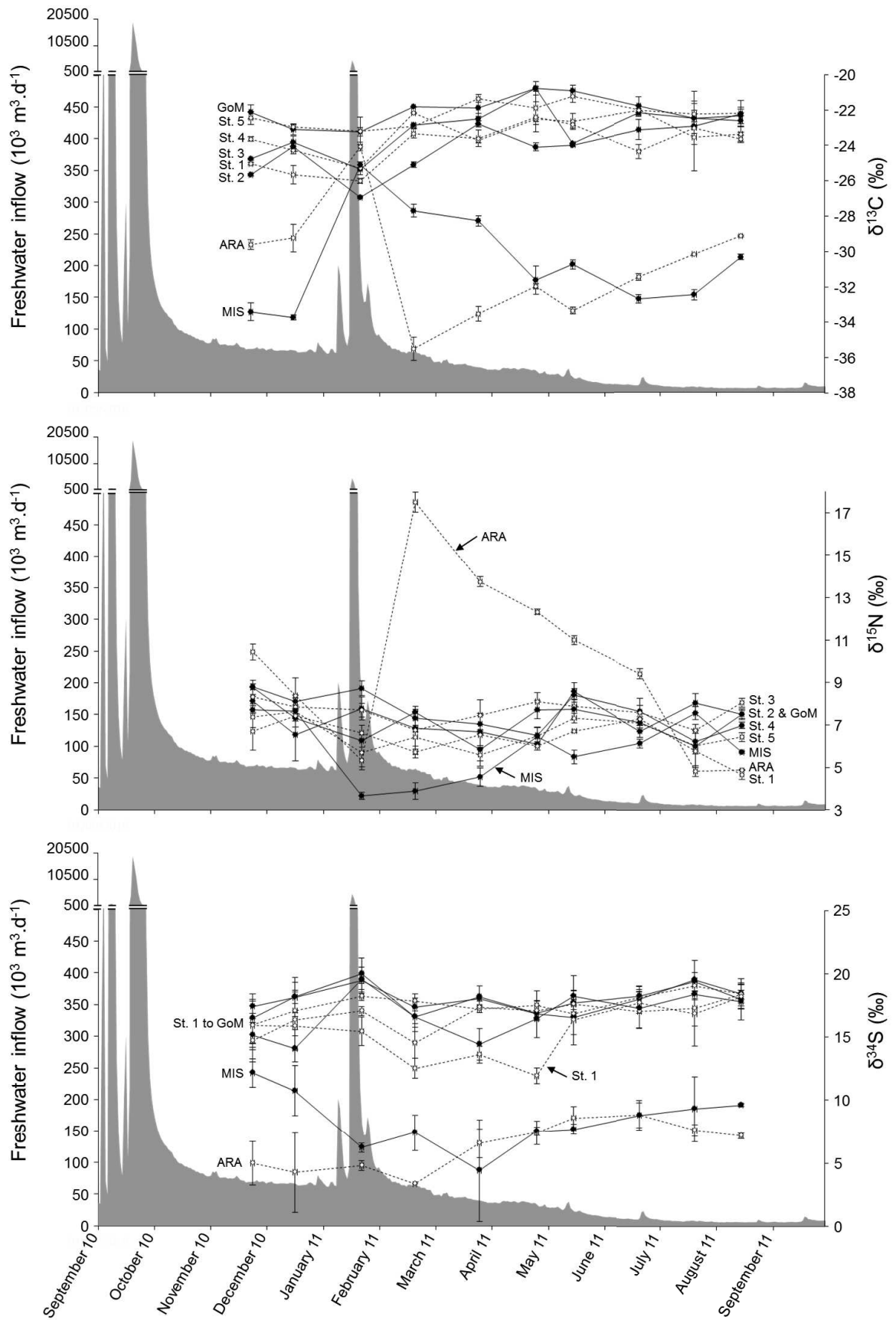




Figure 7

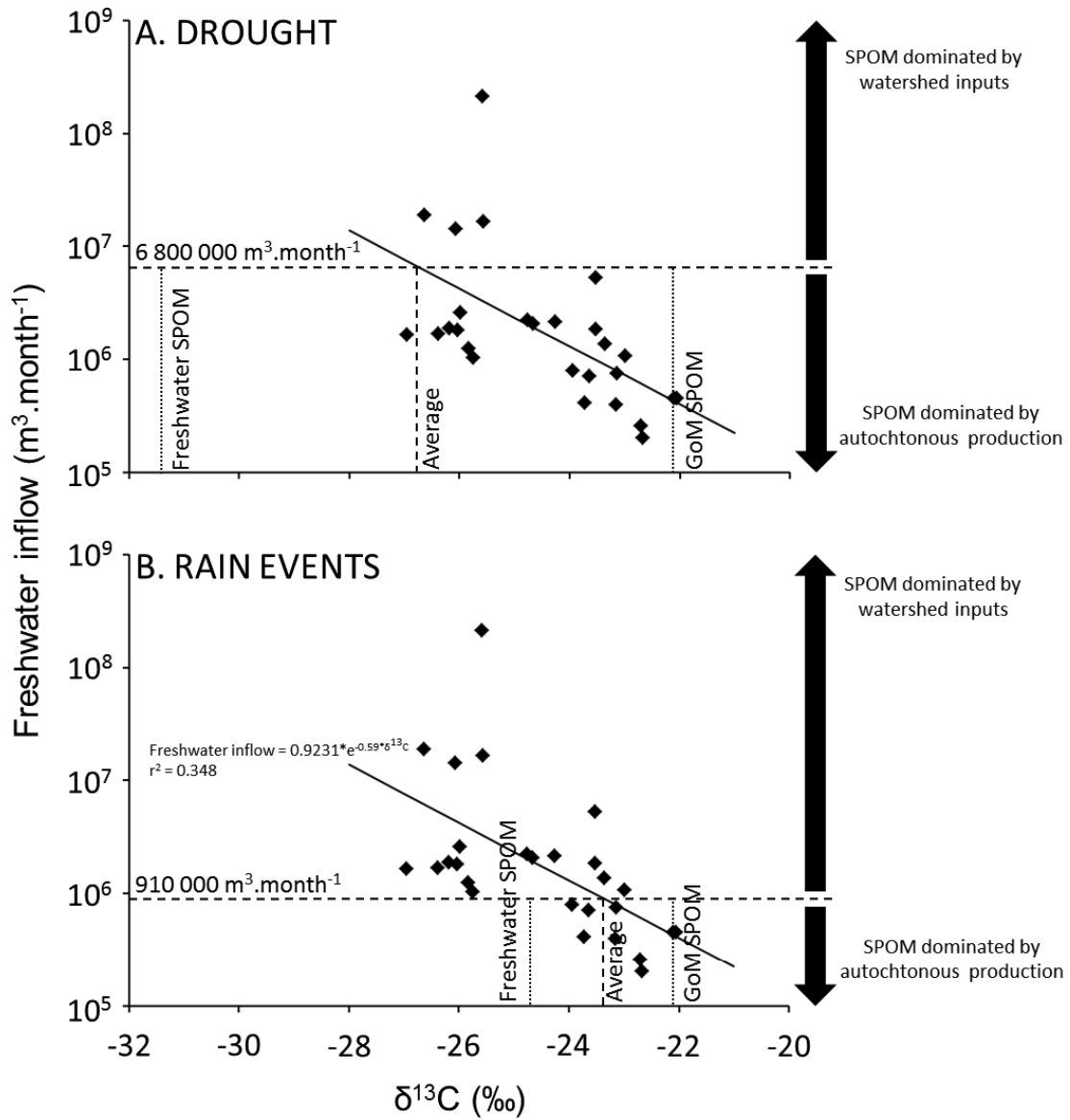
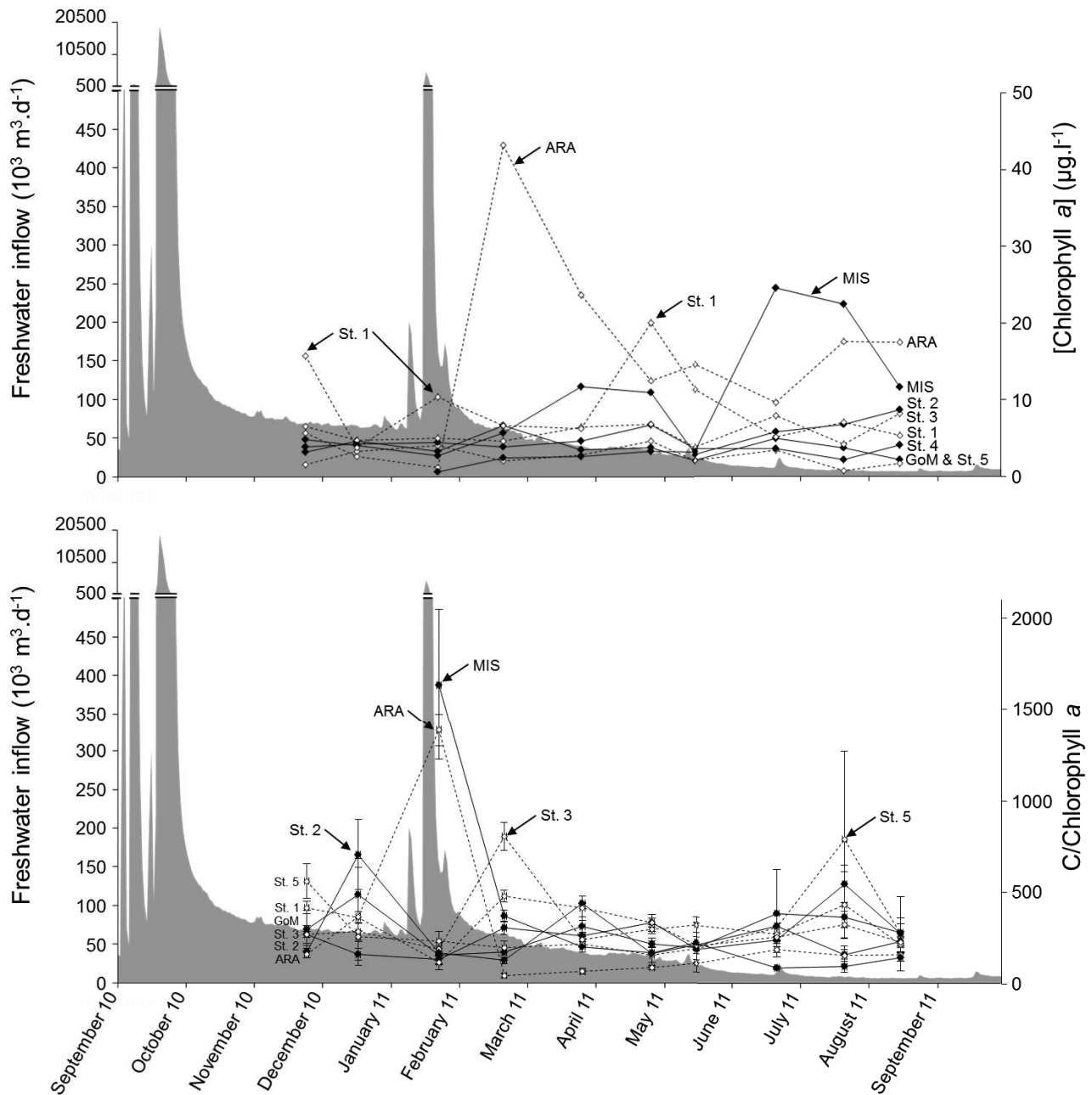


Figure 6



**Supplementary material for online publication only**

**Click here to download Supplementary material for online publication only: [Supplementary\\_data\\_Lebreton\\_et\\_al.docx](#)**