

Développement de micro-préconcentrateurs pour l'analyse de traces de gaz et explosifs.

JP Viricelle^a, P. Breuil^a, C. Pijolat^a, F James^a, M. Camara^b, D. Briand^b

^aEcole Nationale des Mines, SPIN-EMSE, CNRS:UMR5307, LGF,
F-42023 Saint-Etienne, France

^bEcole Polytechnique Fédérale de Lausanne (EPFL), Institute of Microengineering (IMT), Sensors, Actuators and Microsystems Laboratory (SAMLAB),
Neuchâtel, Switzerland

Micro-preconcentrators

- **Context / Principle**
- **Design and fabrication**
- **Adsorbent characterization / Parameters**
- **Applications**
 - VOC preconcentration test, GC analysis
 - Explosive detection
- **Conclusions**

Introduction: context

Challenge : Gas trace detection

with sensor or analyzers with limited sensitivity
Miniaturized system for in situ detection

- Conventional trap (preconcentration tube)



Reduce dead volume and thermal mass



MEMS technology
Microfabricated preconcentrator

- Miniaturized analyzer :
Micro-GC module



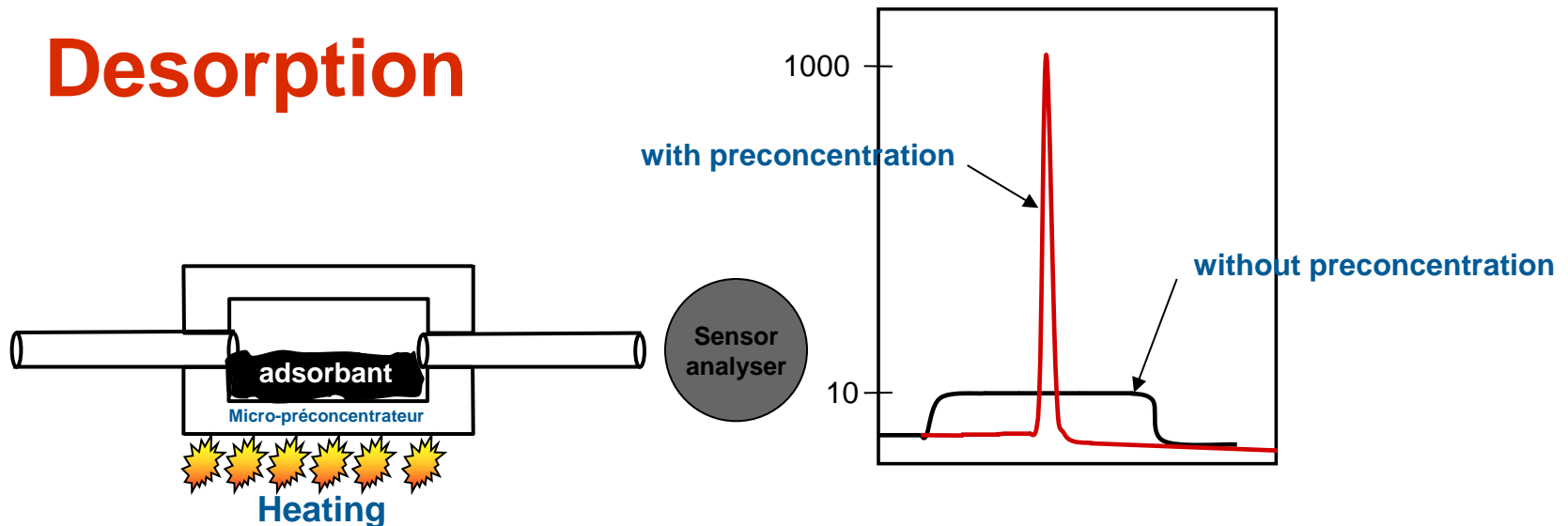
**Miniaturized system :
Micro-GC /Micro-
preconcentrator
coupling**

Introduction: preconcentration principle

Process : Accumulate a target gas, then desorb it by a temperature pulse

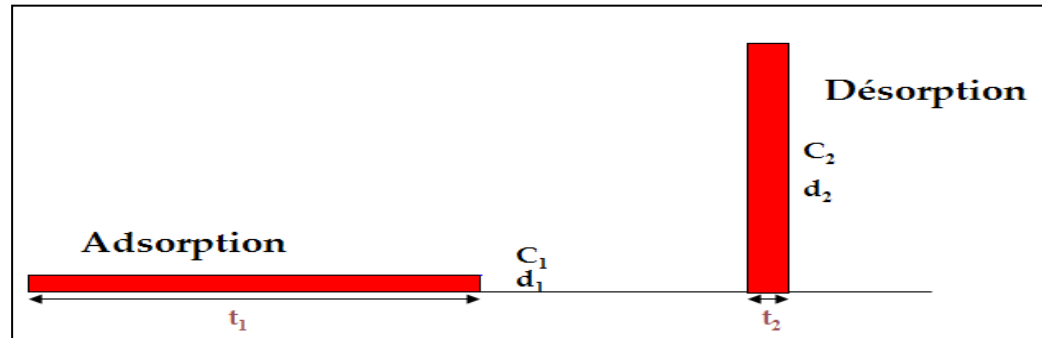
Gas pre-conditioning is of importance for the detection of chemical substances in trace level.

Desorption



Introduction: Preconcentration factor

Preconcentration factor : ratio of outlet to inlet concentration



$$\text{Preconcentration factor: } PF = \frac{t_1 f_1}{t_2 f_2} = \frac{C_2}{C_1}$$

Si $t_1 <$ temps de perçage,
conservation de la matière :

$$C_1 \cdot t_1 \cdot f_1 = C_2 \cdot t_2 \cdot f_2$$

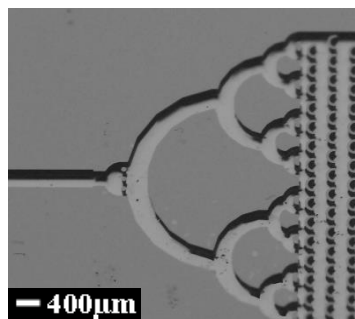
C: concentration
t: time
f: flow

Augmentation du facteur de préconcentration PF implique :

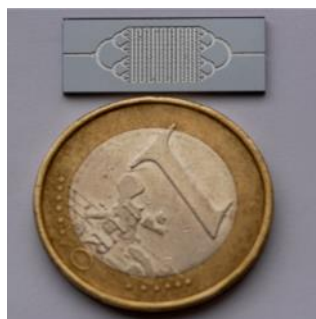
- un débit d'adsorption élevé ;
- un temps d'intégration le plus long possible ;
- un débit de désorption faible ;
- enfin une désorption le plus rapide possible.

Time (min)

Preconcentrator design

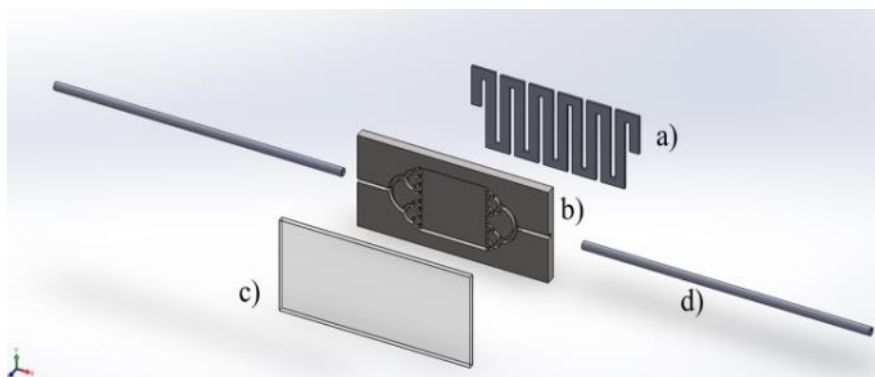


Inlet/outlet channels



preconcentrator/ 1euro

Characteristics	Values
Depth	500µm
Chamber volume	14 µL
External diameter capillary	500 µm
Internal diameter capillary	385 µm
Resistance value	10 Ω



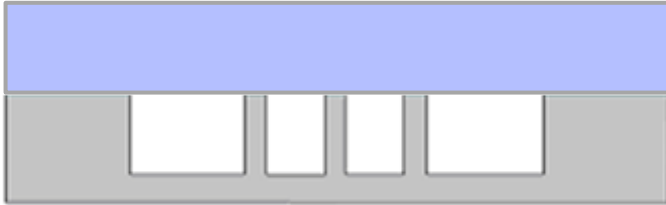
Design and schematic device composition:

- a) platinum heater,
- b) etched silicon wafer
- c) glass cover
- d) capillaries

Preconcentrator fabrication

Microfabrication at EPFL, Neuchâtel

Deep Reactive Ion Etching (DRIE)

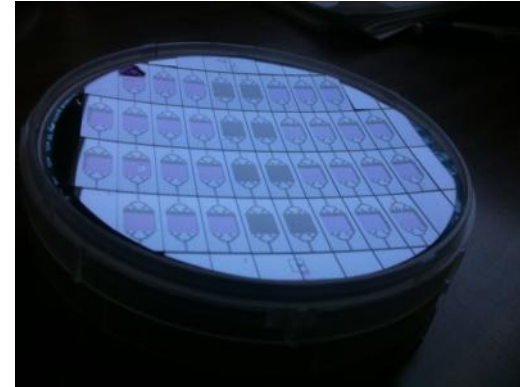


Wafer bonding (Si/Pyrex glass)

■ Silicon

■ Photoresist

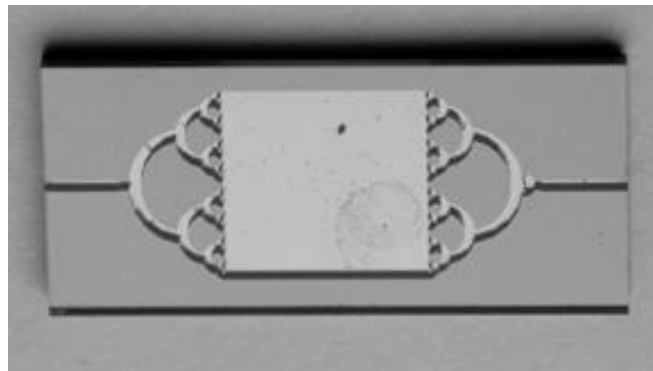
■ Pyrex glass



Structured silicon wafer

Silicon material

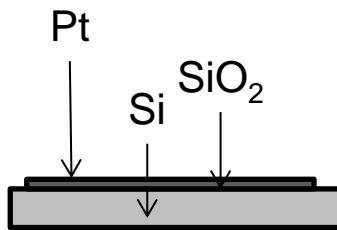
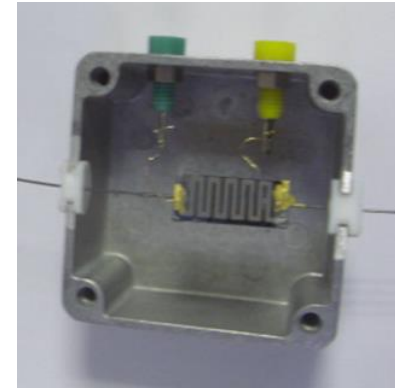
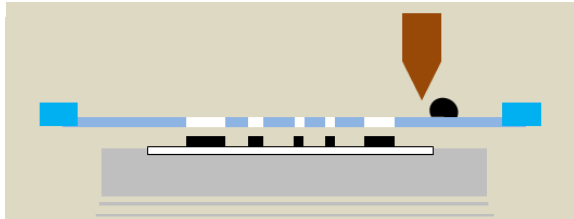
- good thermal conductivity,
- suitable material for DRIE)



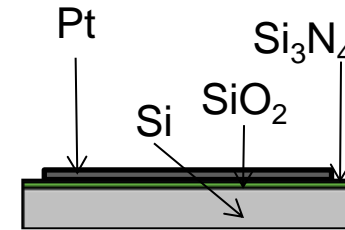
MEMS preconcentrator

Heater deposition

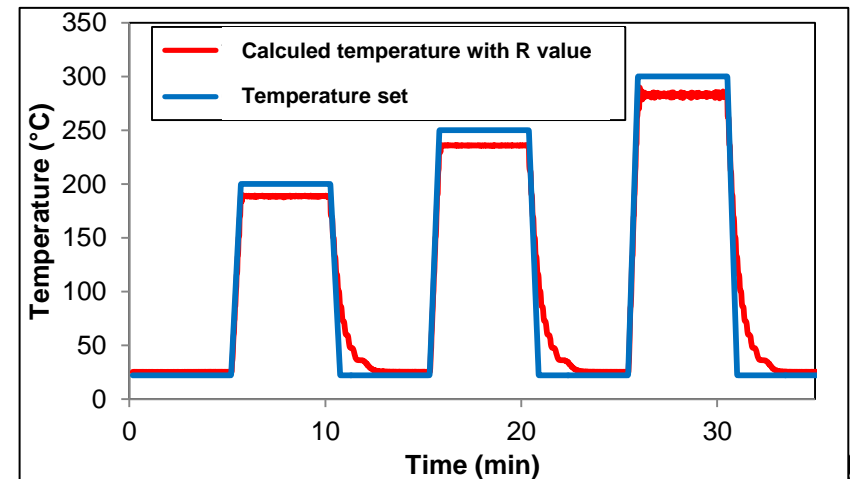
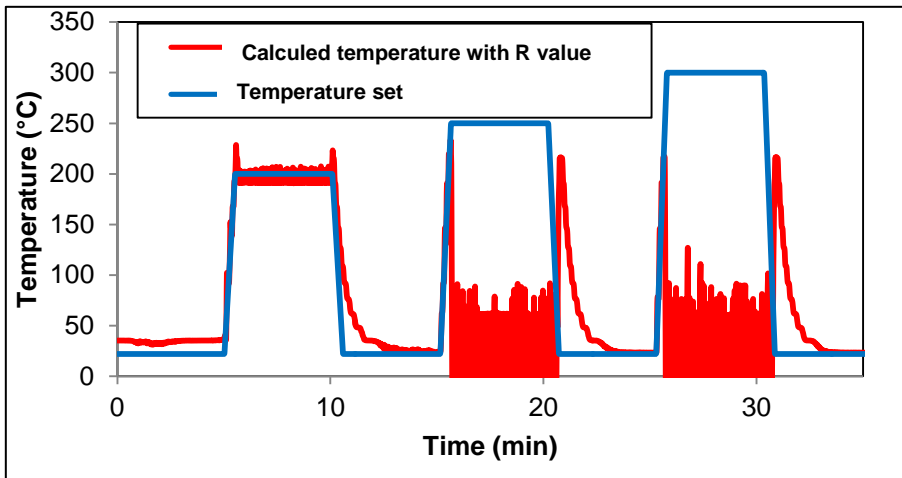
Heater deposition by screen printing



Short circuit
due to the
silicon
conductivity



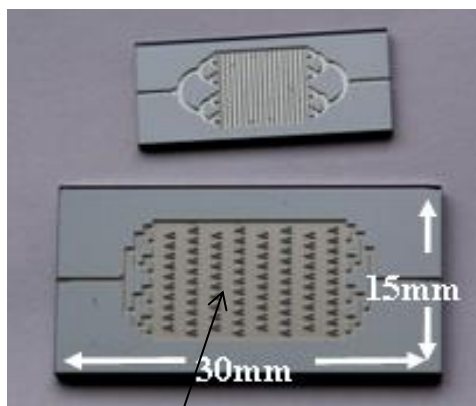
Better
insulation with
a layer of
silicon nitride



Micro-Preconcentrators development

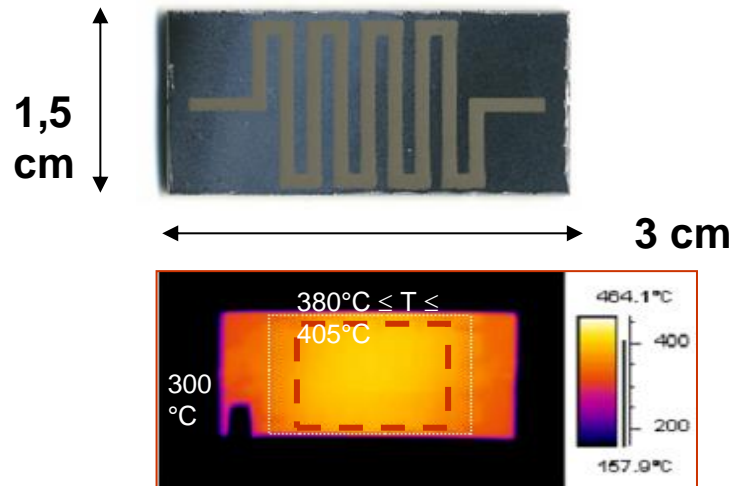
Platinum heater deposition by screen-printing.

Etched Silicon
Microcomponent

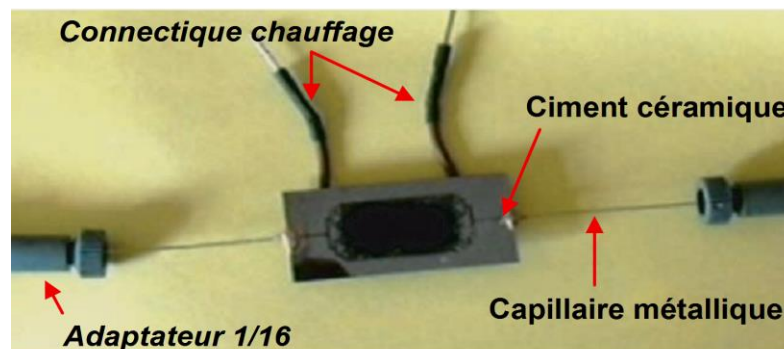


Adsorbent chamber

Metallic capillaries sealed with ceramic cement, with 1/16" connectors.



Heating element and temperature distribution

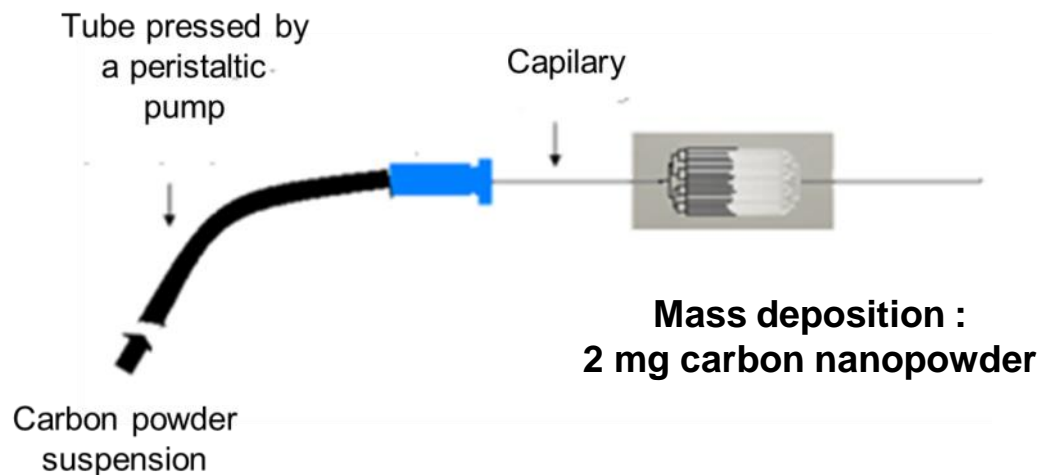


Micro-préconcentrateur device

Capillary : $\varnothing_{interne}$ 220 μ m for 325 μ m deep IMT micro component .

Sorbent deposition

Carbon Nanopowder deposition by microfluidic method



Characterizations	Carbon	Tenax TA
Particule diameter	100 nm	200 μm
Surface Area	95 m^2/g	20 m^2/g

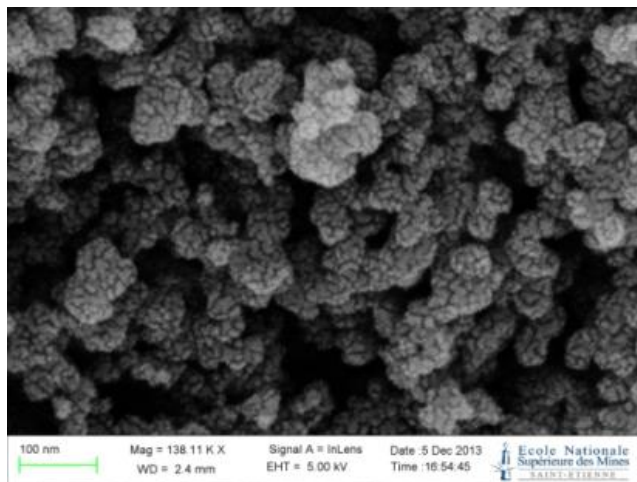


Sorbent material study

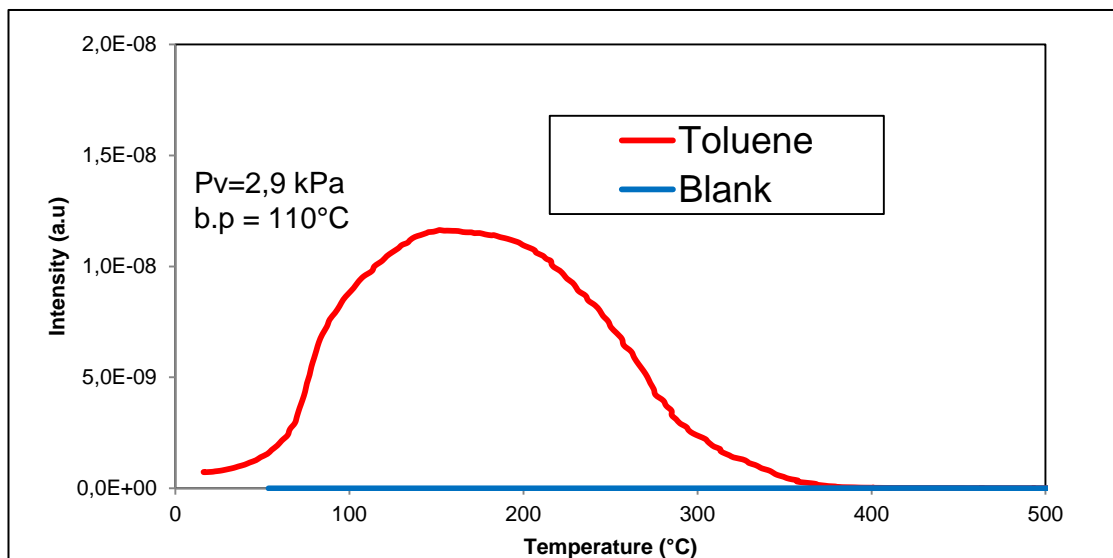
Temperature Programmed Desorption

Thermal desorption of gas species analyzed by mass spectrometry

Carbon
nanopowder



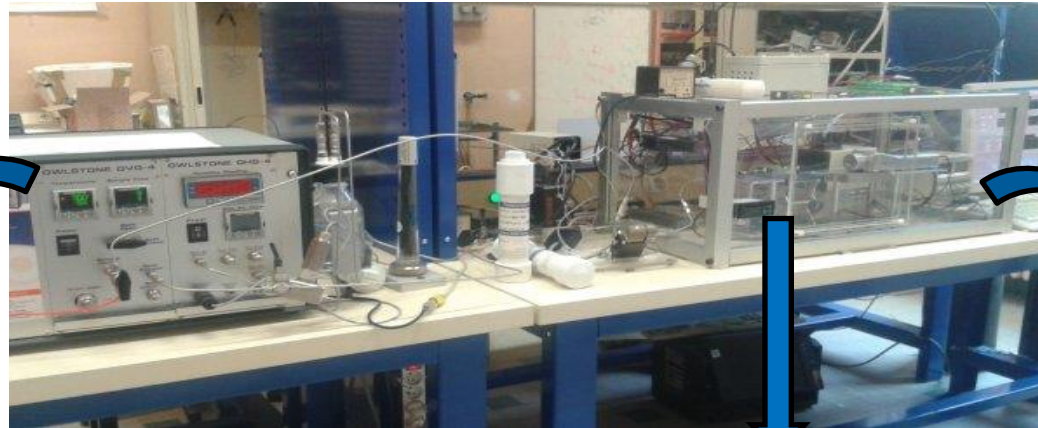
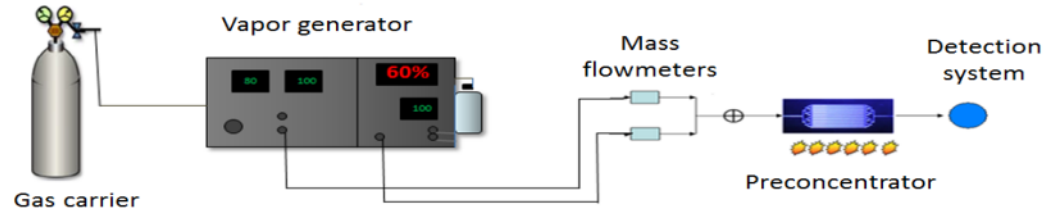
Vapor exposure :
1 ppm of Toluene
during 1 hour at 10L/h



Thermal desorption:
Desorption
temperature at 250-
300°C

Preconcentration test. Laboratory test bench

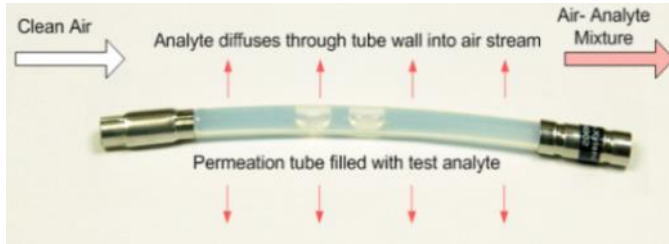
Setup



Permeation tube

Carbon Preconcentrator

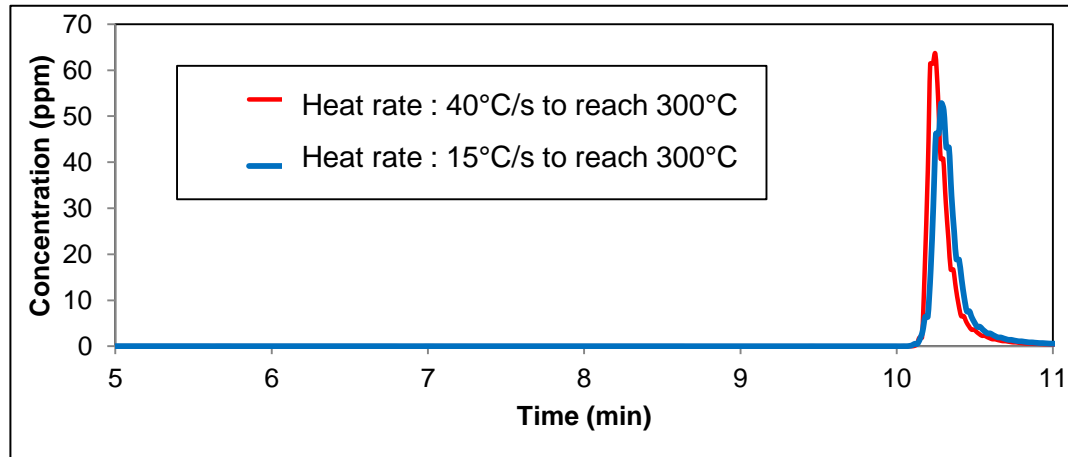
Photo Ionisation Detector (PID)
for Vapour Organic Compounds
(VOCs)



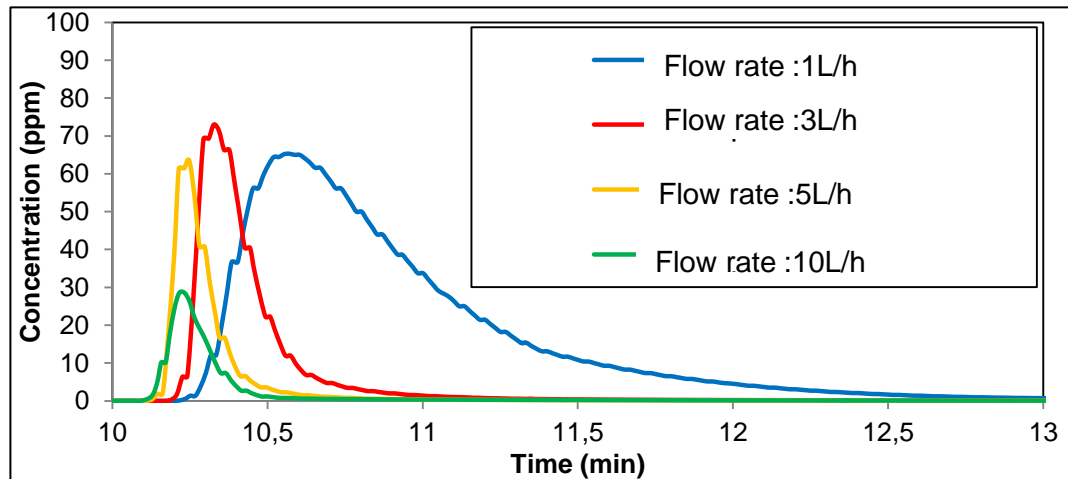
Preconcentration test. Parameter influence

Heating rate and flow rate influence

Vapor exposure : 1 ppm of Toluene during 5 min at 10L/h



High heating rate for high peak detection

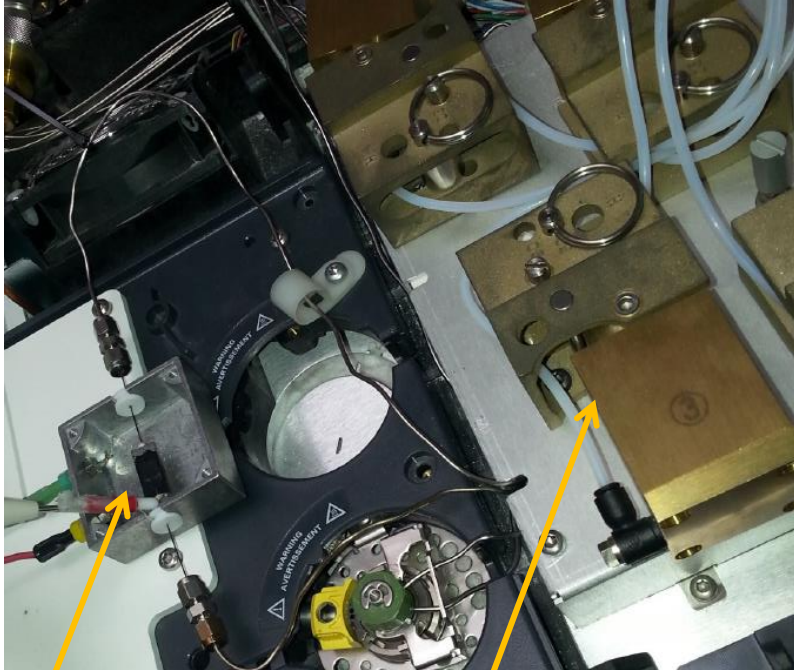


Low flow rate for high peak detection

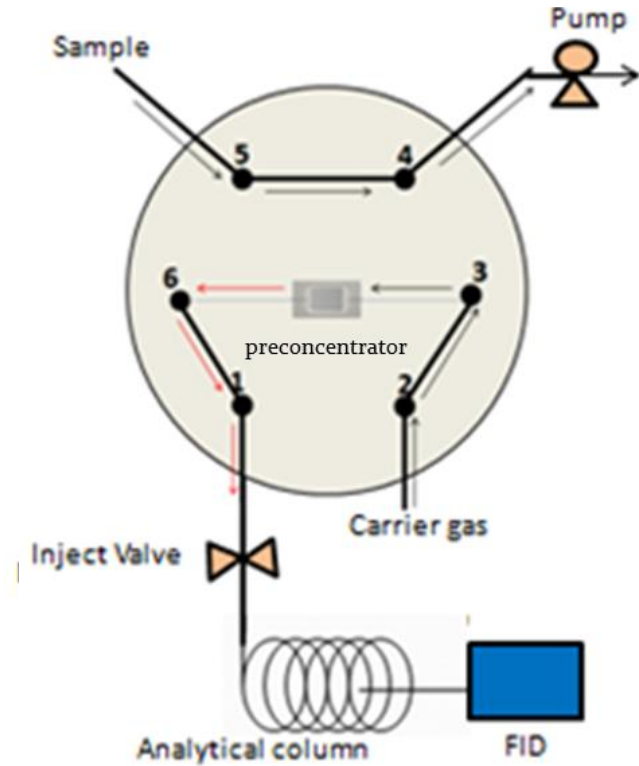
$$C_{out} = \frac{\text{Number of desorbed particles}}{\text{flow rate}}$$

1st application : GC Analysis. Industrial Setup

Setup and GC process



Heating and injection



Preconcentrator 6 ways valve

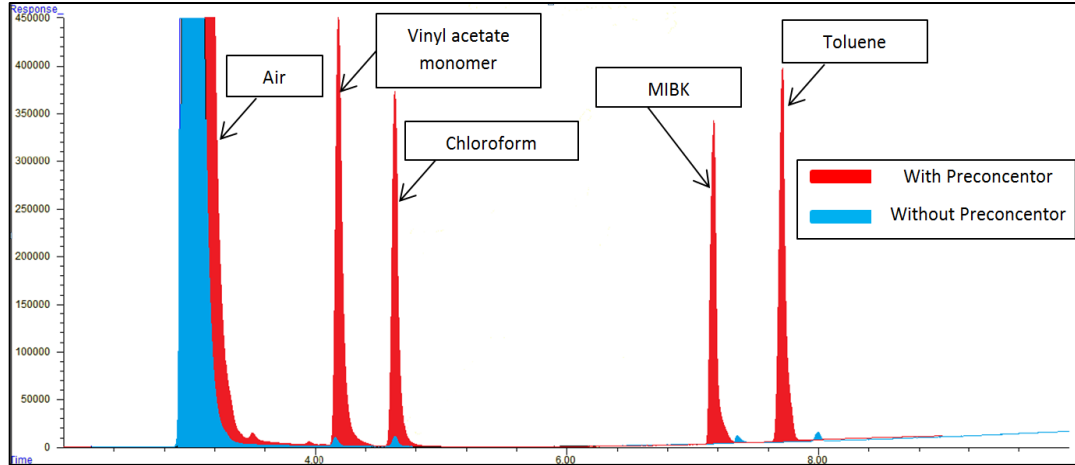
Preconcentrator as a sample loop

1st application : GC Analysis

Chromatograms

Industrial applications:
Gas mixture analysis (Toluene, Methylisobutyketone, Chloroforme, Vinyl acetate)

ppm trace level analysis

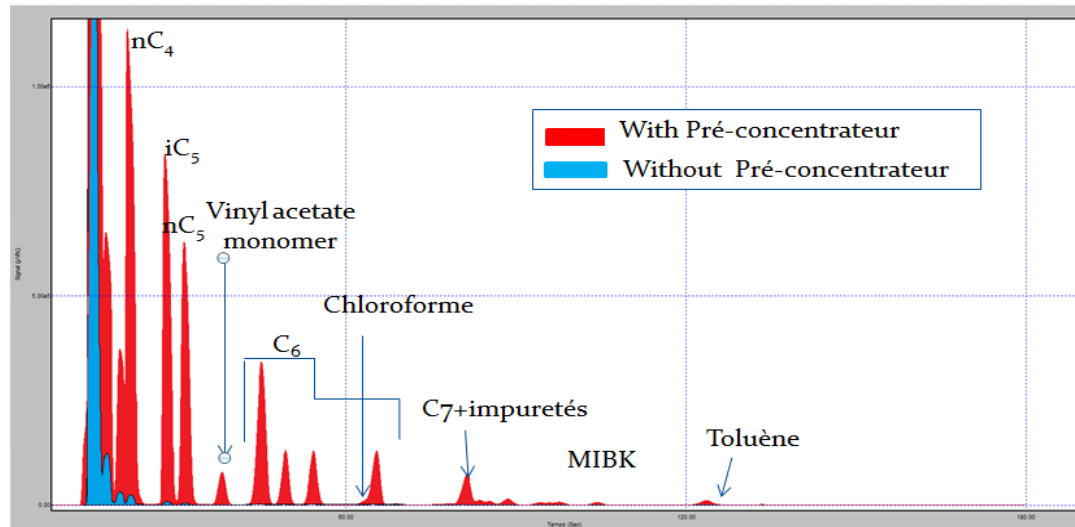


$$PF = \frac{A_2}{A_1}$$

A : peak area

Target Gas	Initial Concentrations	Preconcentration factors (PF)
Toluene	8 ppm	689
Vinyl acetate monomer	9 ppm	658
Chloroform	11 ppm	438
MIBK	7 ppm	576

ppb trace level analysis with interferences (natural gas)



Target Gas	Initial Concentrations	Preconcentration factors (PF)
Toluene	37 ppb	200
Vinyl acetate monomer	39 ppb	800
Chloroform	46 ppb	600
MIBK	35 ppb	200

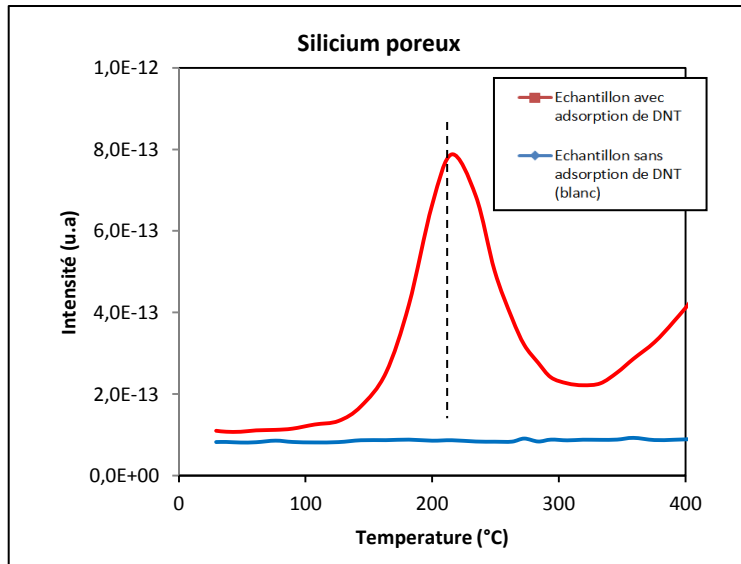
2nd application : Explosive detection

Explosive detection

Micropreconcentration of DNT
(Dinitrotoluène)

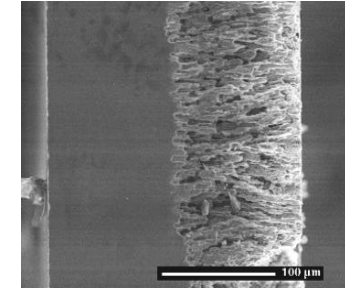
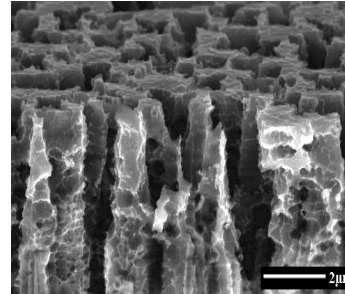
ppb trace level analysis

Thermal Programmed Desorption
of DNT on porous silicon

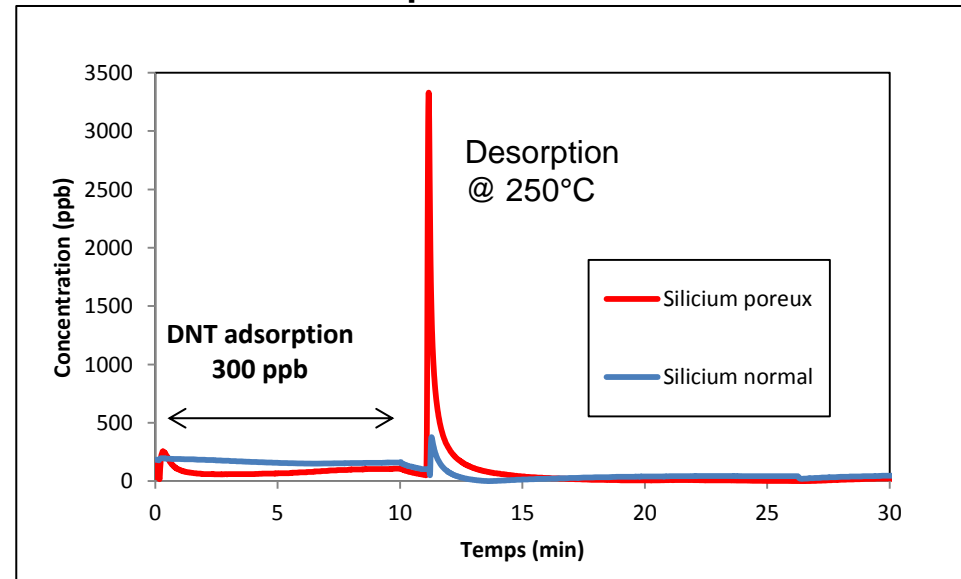


Use of porous silicon (composant wall)
as adsorbant

pore size \varnothing : 1-2 μm and thickness: 90-110 μm



Preconcentration test
of DNT on porous silicon



Conclusions

- ✓ **Microfabricated MEMS preconcentrator**
 - Low volume :14 μL
 - Fast Heating rate :40°C/s
 - Flow rate : 1 to 20 L/h

- ✓ **Various adsorbent material : Carbon nanopowder or nanotubes, Tenax, porous silicon , ...**
 - Good adsorption capacity for large range of VOCs, explosives, drugs...

- ✓ **Wide range of applications**
 - Coupling micropreconcentrator/ μ -GC or with other analyzer
 - Air quality monitoring (VOCs)
 - Security applications (explosives, drugs)
 - Any need of traces detection...

Acknowledgments

IN
nov
AL

AXELERA
catalyseur de croissance durable

L'analyse en ligne au coeur des procédés



EC project on Explosive detection
FP7-SEC-2011-1 N° 285203



TraceTech Security



■ Thank you for attention