



HAL
open science

Comparison of DASH Adaptation Strategies Based on Bitrate and Quality Signalling

Francesca de Simone, Frederic Dufaux

► **To cite this version:**

Francesca de Simone, Frederic Dufaux. Comparison of DASH Adaptation Strategies Based on Bitrate and Quality Signalling. IEEE International Workshop on Multimedia Signal Processing (MMSP 2013), IEEE, Sep 2013, Pula, Italy. hal-01436215

HAL Id: hal-01436215

<https://hal.science/hal-01436215>

Submitted on 10 Jan 2020

HAL is a multi-disciplinary open access archive for the deposit and dissemination of scientific research documents, whether they are published or not. The documents may come from teaching and research institutions in France or abroad, or from public or private research centers.

L'archive ouverte pluridisciplinaire **HAL**, est destinée au dépôt et à la diffusion de documents scientifiques de niveau recherche, publiés ou non, émanant des établissements d'enseignement et de recherche français ou étrangers, des laboratoires publics ou privés.

Comparison of DASH Adaptation Strategies Based on Bitrate and Quality Signalling

Francesca De Simone, Frederic Dufaux

*Dept. Traitement du Signal et des Images, Télécom ParisTech
75014 Paris, France*

francesca.de-simone@telecom-paristech.fr
frederic.dufaux@telecom-paristech.fr

Abstract—During a Dynamic Adaptive Streaming over HTTP (DASH) video transmission, the client can dynamically adapt the bitrate of the requested stream to changes in network conditions, by switching between different versions of the same content encoded at different bitrates, called representations. Each representation is split in smaller portions, called segments, and representation switching can be done at each segment. In this paper, we propose a comparative analysis of different adaptation strategies for representation switching, which exploit information on the bitrate and the visual quality of the different available versions of the requested content, at representation or at segment level. The results allow to identify the advantages and drawbacks related to each strategy in terms of bandwidth exploitation, maximization of visual quality and risk of buffer underflow.

I. INTRODUCTION

The Dynamic Adaptive Streaming over HTTP (DASH) standard [1] provides an efficient solution to deliver audio-visual content over networks with fluctuating bandwidth, by dynamically adapting the bitrate of the transmitted stream to network changes. Particularly, in the DASH architecture, the same media file is encoded at several bitrates. Each encoded version of the same media is referred to as a *representation*. The set of representations of the same media constitutes an *adaptation set*, stored on an HTTP server. The streams in an adaptation set are chopped into portions that can be independently decoded, called *segments*. Each segment can be individually requested by the client via a TCP request. Information regarding the characteristics (such as the bitrate) of the representations available in the adaptation set is delivered to the client in a dedicated file, called *media presentation description* (MPD). Thus, the client can decide to switch between different representations during the streaming session, dynamically adapting the bitrate of the requested stream to changes in network conditions. This dynamic rate adaptation capability is particularly useful for multimedia content streaming scenarios involving highly variable network conditions, such as mobile video streaming.

Due to the reliable nature of the transport layer, adaptive video streaming over HTTP does not suffer from data packet

loss. However, depending on the network conditions and the rate adaptation strategy adopted by the client, there can be playout interruptions, i.e. video player buffer underflow events, and video quality fluctuations, which affects the quality of experience (QoE) of the end user, as discussed in [2], [3], [4], [5].

Few works are available in literature proposing client-driven rate adaptation solutions for dynamic HTTP streaming aiming at maximizing user's QoE. Zhou et al. [6] have proposed a control-theoretic approach for rate adaptation to minimize the risk of buffer underflow and overflow, while maximizing the bitrate of the selected segment. Miller et al. [7] have proposed an adaptation algorithm to avoid the risk of buffer underflow, while maximizing the bitrate of the selected segments and minimizing the number of bitrate switches that may results in visual quality fluctuations. The start-up time, needed to start the playout after the user requests a content, is also taken into account. The bitrate of the segments is approximated to the average bitrate of each representation, as this is the information available at the end user side.

Recently, in the framework of the MPEG standardization activities on DASH, a core experiment has been established to study the benefits that can be obtained by signalling to the client information regarding not only the bitrate but also the visual quality of each representation or even each segment [8]. The basic idea behind quality signalling at representation or segment level is that this information can be used to refine the representation switching strategy performed at the client side, for example in order to avoid annoying quality fluctuations or to guarantee a certain threshold of visual quality of the sequence displayed to the user.

In this paper, we propose a comparative analysis of different client-driven bitrate adaptation strategies based on the bitrate and quality information available at the client side, either at representation or segment level. While the evolution of the buffer size for each adaptation strategy is analyzed, the network and coding conditions used in this paper exclude the occurrence of actual buffer underflow events. For this reason, the adaptation strategies proposed in [6] and [7] have not been included in the comparison. This work can be considered as an extension of the preliminary study in [9], where only one content, relatively high coding bitrates and good bandwidth

conditions have been considered. Particularly, in our study, several realistic video contents, challenging network conditions and lower coding bitrates are considered. Also, a new adaptation strategy, exploiting bitrate and quality information at segment level and based on the concept of visual quality saturation and just noticeable distortion (JND), is proposed and included in the comparison. The obtained results allow to identify the advantages and drawbacks related to each strategy in terms of exploitation of the available bandwidth, maximization of visual quality and risk of buffer underflow.

The rest of the paper is organized as follows. In Section II, the experimental framework set up for our study, from the content preparation process to the simulation of the network conditions and the video player behavior, is described. The adaptation strategies implemented and included in the comparison are illustrated in Section III. The obtained results are presented and discussed in Section IV. Finally, Section V concludes the paper, summarizing the major achievements of the proposed study and drawing directions for future work.

II. EXPERIMENTAL FRAMEWORK

The main functionalities implemented in our experimental framework are detailed below. Only the video channel of the audio-visual content has been considered in the simulations.

A. Content preparation

In order to simulate a realistic scenario, video content from YouTube¹ has been used. Eight video sequences have been selected, for which a high quality version at 4K, HD1080 or HD720 resolution is available. The characteristics of the selected source sequences are summarized in Table I. These streams have been downloaded, decoded to YUV 4:2:0 raw format (fourcc i420) and scaled to a common lower target spatial resolution, keeping the original aspect ratio. A target resolution of 640x360 pixels has been chosen for this study. This allows to directly compare our results to those in [9], where such resolution has been considered. Also, this is a realistic resolution for an application like mobile video streaming that would match the network conditions modeled in our study (refer to subsection II-B for details). The frame rate has been scaled to approximately 24 or 25 fps, depending on the frame rate of the source version. Decoding and scaling have been performed using the ffmpeg tool².

The first 2 minutes of each uncompressed stream at 640x360 resolution have been used as input sequence fed into the H.264/AVC encoder. The x264 encoder³ has been used, with rate control for variable bit rate coding and the settings specified in [9], but the following target bit rates: [1600, 1100, 800, 600, 500, 300, 200, 100] kbps. Since our goal is to simulate rate adaptation under critical network conditions, the considered bitrate range is lower than that used in [9] (in between 8000 and 500 kbps). Additionally, we have noticed that the subjective visual quality of the encoded videos would

be very high when considering bitrates between 8000 and 500 kbps for 640x360 resolution. Particularly, we could not visually distinguish one representation from another. In such conditions, the usefulness of any adaptation strategy would be limited, as the user would already be fully satisfied by receiving the lowest bitrate representation. Figure 1 shows the PSNR values of the representations considered in our study.

Finally, each encoded stream has been split into 2 seconds long DASH-compliant segments, using the MP4Box tool included in the GPAC framework⁴.

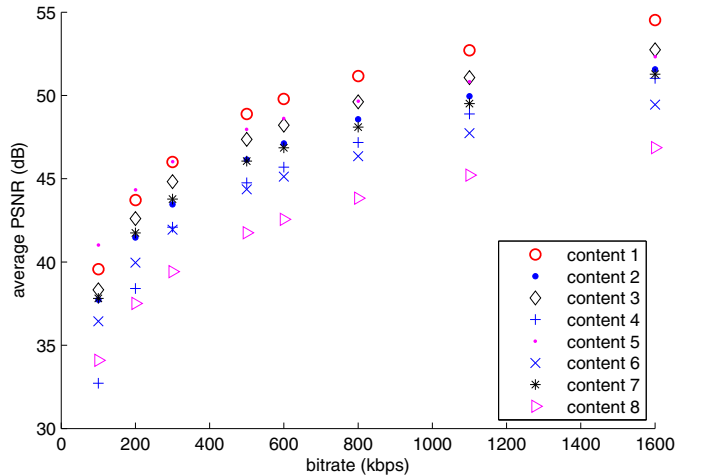


Fig. 1. Average PSNR value of each representation in the adaptation set.

B. Bandwidth model

Similarly to [9], the following artificial model of bandwidth fluctuations has been used. The available bandwidth (BW_{avail}) starts at 200 kbps and jumps up every 7 seconds, with step of 200 kbps. When it reaches 1Mbps, the bandwidth starts to jump down every 7 seconds, again with step of 200 kbps, till it reaches the starting 200 kbps. The ramp repeats itself till the end of the streaming, with 7 seconds at 100 kbps in between each ramp. The fluctuations of available bandwidth can be visualized in Figure 3.

C. Client model

The client model includes the video player buffer and the bandwidth estimation. Both are based on the assumption that a new segment is requested only once the previous segment has been completely downloaded. Also, a segment is played-out only after its complete download. We define t_k as the time when segment k is downloaded completely.

The simulated buffer has an unlimited maximum size and a minimum size of 2 seconds (i.e., the duration of one segment). Thus, independently from the adaptation method, at the beginning of the streaming, and every time the buffer size goes under the threshold of 2 seconds, the client requests a segment at the lowest bit rate in order to fill in the minimum

¹<http://youtube.com>

²<http://www.ffmpeg.org/>

³<http://www.videolan.org/developers/x264.html>

⁴<http://gpac.wp.mines-telecom.fr/>

TABLE I
CHARACTERISTICS OF THE SELECTED VIDEO SEQUENCES USED TO PRODUCE UNCOMPRESSED SAMPLES AT 640X360 RESOLUTION .

ID	Genre	Description	YouTube url	Resolution	Frame rate	Codec
1	movie trailer (action)	fast motion, many scene cuts	s3r74atUqic	3840x2160	23.9	AVC
2	movie trailer (fantasy)	fast motion, many scene cuts	t56ooXC9VmY	4096x2304	23.9	AVC
3	movie trailer (drama)	slow motion, many scene cuts	fJ1O1vb9AAU	1920x1080	23.9	AVC
4	cartoon ad	slow motion, no scene cuts	ntOdEO84SnY	1920x1080	29.9	AVC
5	tv series (comic)	some scene cuts	uT6Destt22Q	1920x1080	24.9	AVC
6	natural scenes	fast motion	NIE3ubfMeik	1920x1080	23.9	AVC
7	news	static scene, some close up	HvaKBU_Q1TY	1280x720	24.9	AVC
8	sport (tennis)	static scene, some scene cuts and close up	pdcbwQa7S5E	1920x1080	23.9	AVC

buffer. The buffer size is measured every time a segment has been completely downloaded, as:

$$Buf(t_k) = Buf(t_{k-1}) - DwTime_k + Duration_k \quad (1)$$

where $Buf(t_{k-1})$ is the size of the buffer measured when the previous segment ($k - 1$) has been completely downloaded, $DwTime_k$ is the time that was needed to download segment k (during this time, data from the buffer is played-out), and $Duration_k$ is the duration of segment k in playout time (2 seconds in our case).

The estimation of the available bandwidth is based on the assumption that the output of the TCP layer is directly exposed to the client, thus there is no difference between estimation and measurement. The bandwidth estimation takes place every time a segment has been completely downloaded, as:

$$BW_{est}(t_k) = Size_k / DwTime_k \quad (2)$$

where $Size_k$ is the size of the downloaded segment k in bits. Based on $BW_{est}(t_k)$ and on the adaptation strategy, the client selects what is the next segment ($k+1$) to request, as discussed in the next section.

III. ADAPTATION STRATEGIES

Two sets of adaptation strategies have been implemented and included in the comparison: those based on per-representation information available at the client side (*adaptation on per-representation basis*) and those based on per-segment information available at the client side (*adaptation on per-segment basis*).

As *adaptation on per-representation basis*, we distinguish among strategies relying on:

- 1) average bitrate information (R-AVGBR). The information available at the client side is the average bitrate of each representation. The requested segment is that of the representation having average bitrate lower than but closest to (or equal to) the estimated bandwidth.
- 2) maximum bitrate information (R-MAXBR). The information available at the client side is the maximum bitrate of each representation (i.e. the maximum bitrate across the segments of the representation) [9]. The requested segment is that of the representation having maximum bitrate lower than but closest to (or equal to) the estimated bandwidth. If none of the representations has bitrate lower than the available bandwidth, that corresponding to the lowest bitrate is selected.

As *adaptation on per-segment basis*, we distinguish among strategies relying on:

- 3) average bitrate information (S-BR). The information available at the client side is the average bitrate of each segment [9]. Thus, the requested segment is that having bitrate lower than but closest to (or equal to) the estimated bandwidth.
- 4) average bitrate information, quality saturation and JND quality threshold (S-BR-Q). The information available at the client side is the average bitrate of each segment, as well as its average PSNR. We propose an adaptation strategy according to which the requested segment is selected among those having average bitrate lower than (or equal to) the estimated bandwidth and average quality falling in a range of significant PSNR values $[PSNR_{max}, PSNR_{min}]$. $PSNR_{max}$ is an upper bound PSNR value above which no perceptual quality improvement can be detected. $PSNR_{min}$ is a lower bound PSNR value below which no further perceptual quality degradation can be detected. In this set of samples, if there are segments having PSNR values that differ for less than a JND value $PSNR_{jnd}$, only that corresponding to the lowest bitrate is considered. Finally, in this reduced set, the sample corresponding to the bitrate closest to the estimated bandwidth is selected. If all the samples having average bitrate lower than (or equal to) the estimated bandwidth have PSNR values above (below) the upper (lower) bound, that corresponding to the lowest bitrate is selected. If none of the samples has bitrate lower than the available bandwidth, that corresponding to the lowest bitrate is selected.

As an example, Figure 2 shows the bitrate and PSNR values computed at representation and segment level for one sequence in our test set. As it is clear from the figure, the segment bitrate and PSNR can be very different from the values computed over the entire representation. Similarly to [9], the considered adaptation algorithms are very simple: they have been selected because they allow an unbiased analysis of the impact of the information available at the client side, via the MPD. More complex adaptation strategies will be added to the comparison in future works.

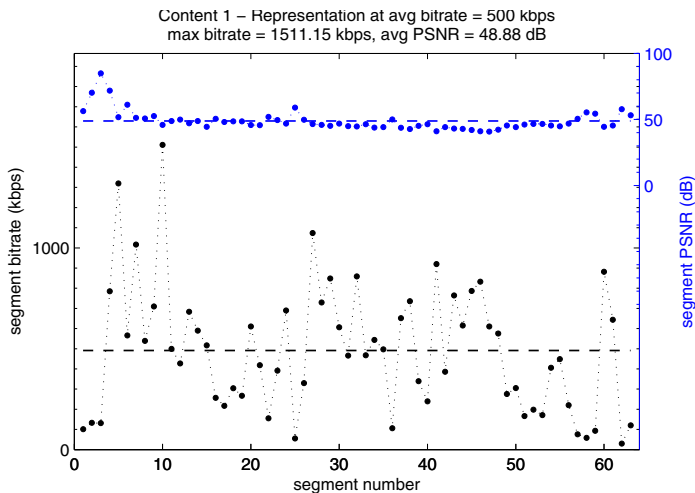


Fig. 2. Example of bitrate and PSNR values computed at representation and segment level for one representation (content 1, coding bitrate 500 kbps).

IV. RESULTS

The results reported in this section have been obtained considering $PSNR_{max} = 50dB$, $PSNR_{min} = 30dB$ and $PSNR_{jnd} = 2dB$. These thresholds have been defined, after visually analyzing all the representations, as general content-independent values. The optimization of these thresholds is out of the scope of this paper and will be addressed in future works.

Figure 3 shows the results of the different adaptation strategies for one example content, in terms of bitrate of the selected segments with respect to the estimated (and available) bandwidth. The PSNR of the selected segments is also shown in the upper part of the plots. Figure 4 show the corresponding buffer size evolution during the entire duration of the streaming, for all the four adaptation strategies.

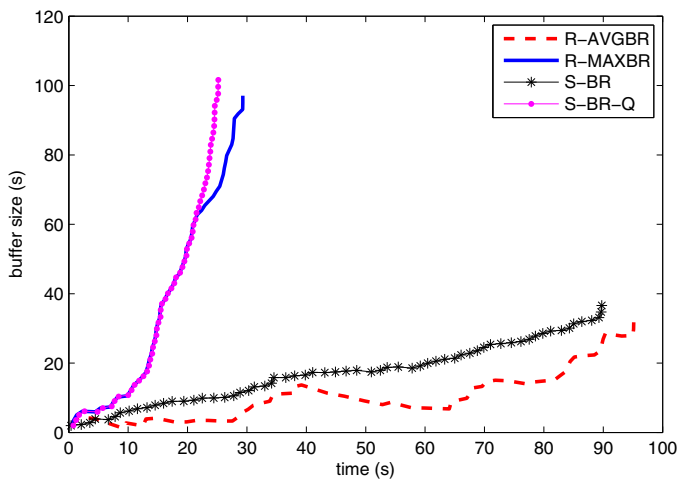


Fig. 4. Buffer size ($Buf(t)$) evolution during the entire duration of the streaming of content 1, for all the adaptation strategies shown in Fig. 3. Each curve ends when the last segment has been received: different algorithms request different segments, thus fill the buffer at different speed, that is why the curves have different lengths.

On one hand, it can be noticed from the plots in Fig. 3 that, as expected from the strategy adaptation design, the algorithms that fully exploit all the available bandwidth are R-AVGBR and S-BR (Fig. 3 (a) and (c)). At the same time, as visible in Fig. 4, S-BR limits the risk of buffer underflow, as there are never segment transfers for bitrates higher than the estimated bandwidth. Instead, R-AVGBR constitutes a less robust approach against the risk of buffer underflow, in case of further, even short, degradation of the network conditions. This is due to the fact that, when the content is encoded at variable bitrate, the client underestimates the bitrate of some segments, since it relies only on the average representation bitrate information.

On the other hand, the algorithms R-MAXBR and S-BR-Q under-exploit the available bandwidth, as the bitrate of the requested segments is often much lower than the available bandwidth. In R-MAXBR, this is due to the fact that, especially when the content is encoded at variable bitrate, the client strongly underestimates the bitrate of most of the segments, since it relies only on the maximum representation bitrate. This may cause the delivery of content at lower visual quality than expected to the user. A similar approach, but controlled by a set of quality thresholds, is applied in S-BR-Q. In this case, the idea is that if the quality of the encoded content is already acceptable, than there is not need to ‘waste’ bandwidth for the current user, as delivering higher bitrates does not necessarily lead to a remarkable increase in video quality. This defines a sort of ‘energy saving’ and ‘community friendly’ modality, as the computational complexity of the decoding at the end user terminal is expected to be reduced and, at the same time, the saved bandwidth can be used to better allocate the network resources among the different users who are sharing them. In both R-MAXBR and S-BR-Q, the under-exploitation of the available bandwidth allows to fill in the buffer very quickly and increase the robustness against the risk of buffer underflow.

To allow an overall comparison of the performance of the different adaptation strategies, the average and standard deviation of the PSNR values computed on the sequence resulting from each adaptation (i.e., the video that the user would actually watch), its average bitrate and file size are listed in Table II for all the contents considered in our simulations (refer to Table I for a description corresponding to the content ID).

Across the entire set of test material, the lowest overall bitrate and visual quality (in terms of average PSNR) is always obtained when using S-BR-Q. Instead, the highest overall bitrate always correspond to R-AVGBR but this does not always lead to the highest average PSNR, which is sometimes reached by using S-BR (content 1, 4 and 5). Finally, it is interesting to notice that the strongest PSNR variations are occurring for S-BR, with some particular content dependent behavior, like for content 5, for which the strongest PSNR variation (still very small) is detected for S-BR-Q.

TABLE II
OVERALL COMPARISON OF THE RESULTS OBTAINED WITH DIFFERENT
ADAPTATION STRATEGIES.

Cont. ID	Method	Mean PSNR (dB)	Std PSNR (dB)	Bitrate (kbps)	File size (kbits)
1	R-AVGBR	46.45	7.65	396.567	47526.368
	R-MAXBR	40.96	5.62	126.396	15317.072
	S-BR	47.48	9.76	369.242	43915.488
	S-BR-Q	39.78	5.74	96.988	11731.784
2	R-AVGBR	44.6	6.20	465.625	56190.928
	R-MAXBR	40.74	5.51	223.837	26856.904
	S-BR	44.42	8.70	371.477	45181.248
	S-BR-Q	37.90	5.30	104.001	12635.016
3	R-AVGBR	45.49	4.82	458.983	55556.472
	R-MAXBR	41.87	5.03	217.324	26211.08
	S-BR	45.27	6.71	391.968	47728.4
	S-BR-Q	38.50	3.77	102.884	12381.384
4	R-AVGBR	42.63	14.41	491.222	32929.664
	R-MAXBR	35.6	16.18	123.267	8317.688
	S-BR	43.13	15.2	444.525	28976.992
	S-BR-Q	33	12.20	98.196	6577.056
5	R-AVGBR	46.45	4.41	443.570	53123.272
	R-MAXBR	45.39	3.73	285.913	34145.328
	S-BR	46.81	3.99	439.122	51909.056
	S-BR-Q	41.09	4.48	106.296	12802.104
6	R-AVGBR	42.44	10.63	459.274	51087.32
	R-MAXBR	37.47	9.85	136.868	15367.712
	S-BR	42.27	11.34	371.429	44906.512
	S-BR-Q	36.52	10.52	104.583	12163.832
7	R-AVGBR	44.2	3.94	446.83	53111.024
	R-MAXBR	42.36	3.63	293.423	35226.72
	S-BR	43.66	4.29	395.854	47120.288
	S-BR-Q	37.81	1.30	102.35	12174.056
8	R-AVGBR	40.38	3.63	462.483	54690
	R-MAXBR	38.44	2.36	286.169	34081.024
	S-BR	40.00	4.04	418.785	49677.296
	S-BR-Q	34.09	1.21	104.262	12364.84

V. CONCLUSIONS

In this paper, we have described the implementation of an experimental framework to compare different client-driven bitrate adaptation strategies based on the availability of bitrate and quality information at the client side. Particularly, three simple adaptation strategies, based on bitrate information at representation or segment level, and one novel solution, exploiting bitrate and quality information at segment level and the concepts of visual quality saturation and JND, have been compared. The test scenario under analysis included several realistic video sequences, challenging network conditions and coding bitrates.

The obtained results allow to identify the advantages and drawbacks related to each strategy in terms of exploitation of the available bandwidth, maximization of visual quality and risk of buffer underflow. As a conclusion of the analysis, for content encoded at variable bitrate, the optimal solution appears as a combination of the R-AVGBR, S-BR, S-BR-Q algorithms, with switches from one algorithm to another depending on: the presence of other users sharing the network resources; specific user's quality requirements; the occurrence of strong degradations of network quality. In these

circumstances, the availability of segment-level information and specifically visual quality information, can provide useful advantages.

The conducted analysis has been based on the simple evaluation of visual quality by mean of PSNR, accompanied by informal expert viewing sessions to confirm the findings shown by the objective results. Thus, future works will focus on the subjective quality assessment of the produced test material and the definition of content-dependent thresholds to be exploited for quality-driven adaptation. More complex adaptation strategies, as well as quality optimization approaches based on objective quality metrics other than PSNR, will also be added to the comparison. Furthermore, the adaptation of the audio channel of the considered multimedia content will be integrated in the developed framework, as well as new network and encoding models. Finally, while the focus of the proposed study was on client-driven adaptation, the design of a server-client joint quality optimization, including the definition of optimal encoding bitrates to avoid quality saturation and redundancy and reduce the need for signalling at the end user, will be investigated.

ACKNOWLEDGMENT

This work was partly funded by the FUI AUSTRAL project. The authors would also like to thank Prof. Jean Le Feuvre for the useful discussions and the technical support provided in the usage of MP4Box.

REFERENCES

- [1] I. Sodagar, "The MPEG-DASH standard for multimedia streaming over the Internet," *Transactions on MultiMedia, IEEE*, vol. 18, no. 4, pp. 62–67, 2011.
- [2] O. Oyman and S. Singh, "Quality of experience for HTTP adaptive streaming services," *Communications Magazine, IEEE*, vol. 50, no. 4, pp. 20–27, 2012.
- [3] K. Singh, Y. Hadjadj-Aoul, and G. Rubino, "Quality of experience estimation for adaptive HTTP/TCP video streaming using H.264/AVC," in *Proceedings of the IEEE Consumer Communications and Networking Conference (CCNC)*, 2012, pp. 127–131.
- [4] R. Mok, E. Chan, and R. Chang, "Measuring the quality of experience of HTTP video streaming," in *Proceedings of the IFIP/IEEE International Symposium on Integrated Network Management (IM)*, 2011, pp. 485–492.
- [5] S. Akhshabi, A. C. Begen, and C. Dovrolis, "An experimental evaluation of rate-adaptation algorithms in adaptive streaming over HTTP," in *Proceedings of the second annual ACM conference on Multimedia systems (MMSys '11)*, 2011, pp. 157–168.
- [6] C. Zhou, X. Zhang, L. Huo, and Z. Guo, "A control-theoretic approach to rate adaptation for dynamic HTTP streaming," in *Proceedings of the IEEE Visual Communications and Image Processing (VCIP) Conference*, 2012, pp. 1–6.
- [7] K. Miller, E. Quacchio, G. Gennari, and A. Wolisz, "Adaptation algorithm for adaptive streaming over HTTP," in *Proceedings of the 19th International Packet Video Workshop (PV)*, 2012, pp. 173–178.
- [8] Systems subgroup/DASH, "w13082 Descriptions of Core Experiments on DASH amendment," MPEG meeting 102, Shanghai, 2012.
- [9] S. Zhang, Y. Xu, P. Di, C. Ai, A. Giladi, X. Wang, and R. Yue, "m28172 Experiment results on quality driven streaming," MPEG meeting 103, Geneva, 2013.

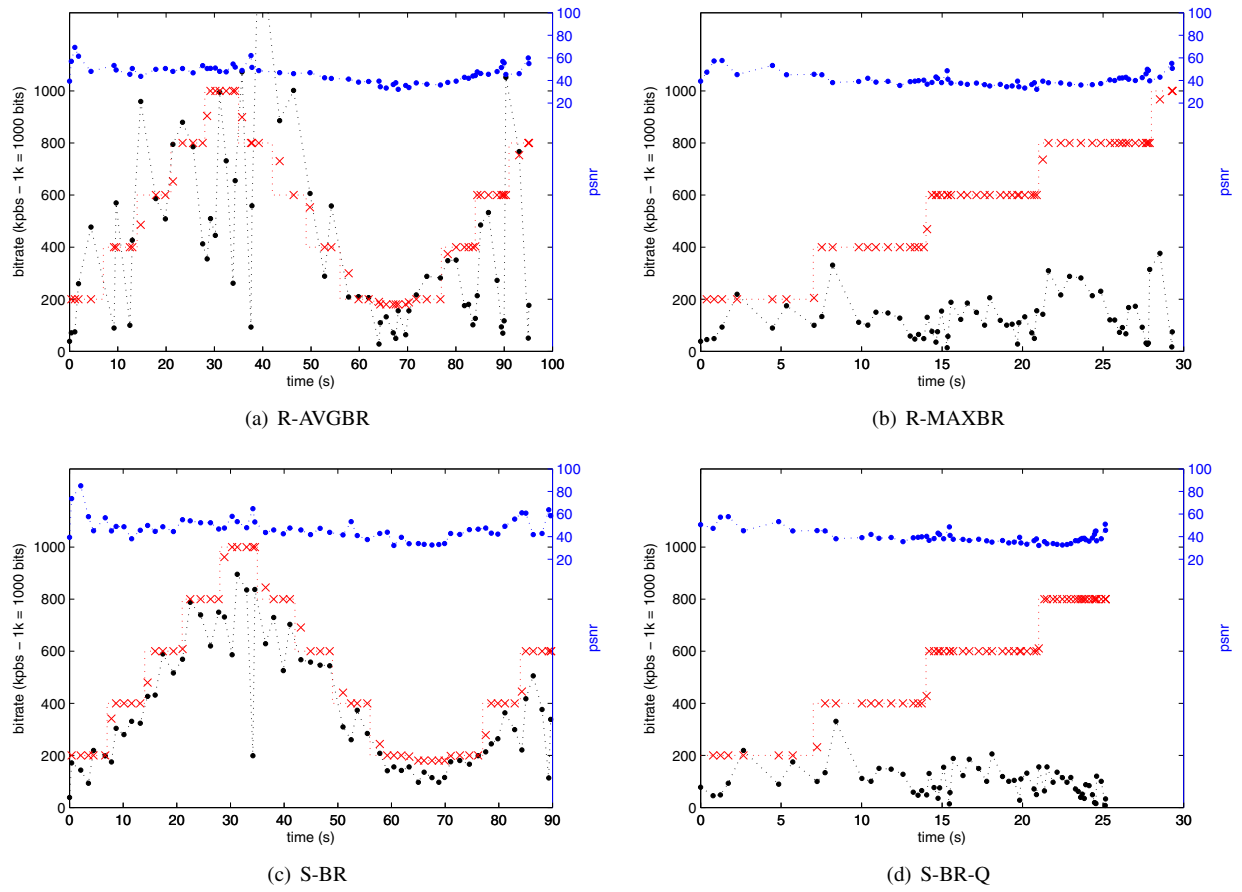


Fig. 3. Results of the different adaptation strategies for content 1, in terms of bitrate and PSNR of the selected segments. The estimated bandwidth (BW_{est}) and available bandwidth (BW_{avail}) are shown as the red \times and red dotted line, respectively.